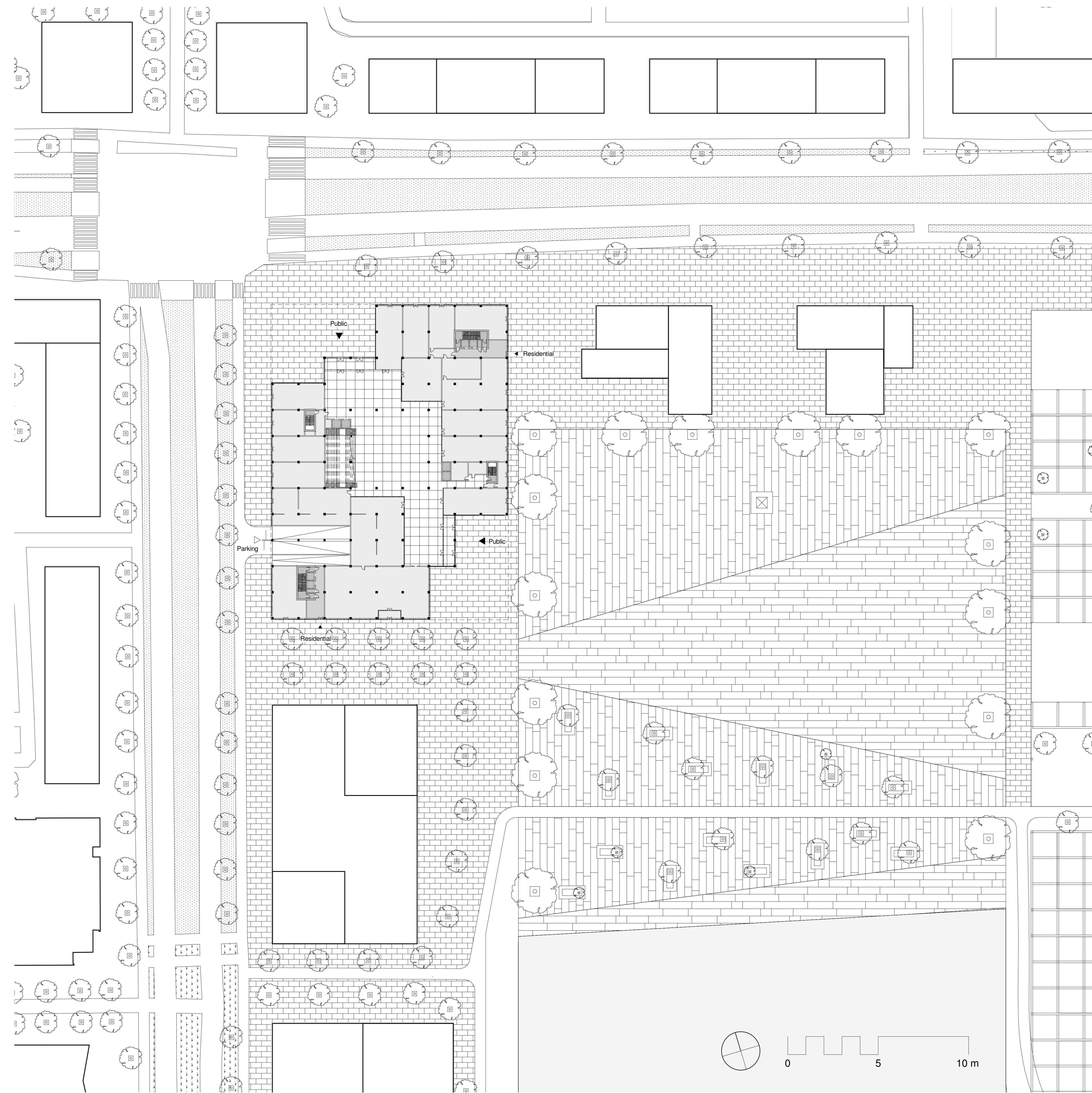
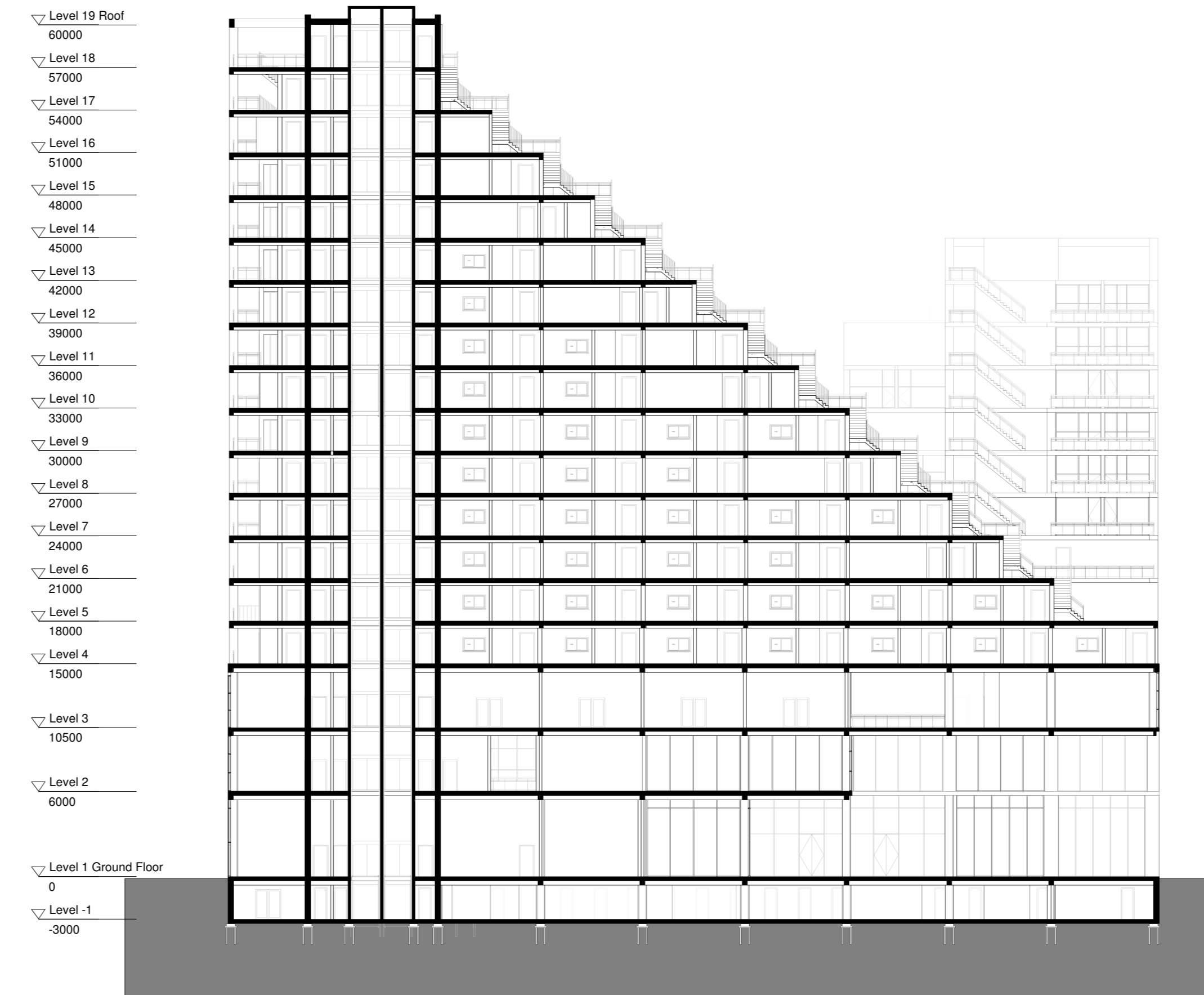
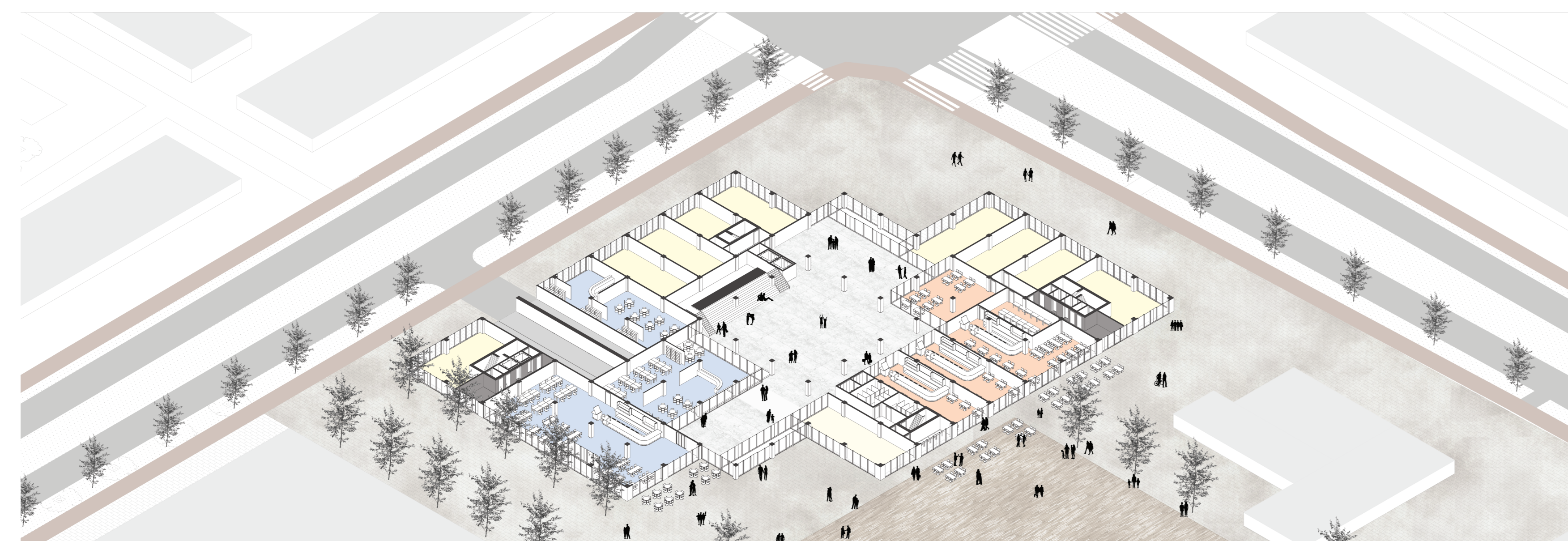
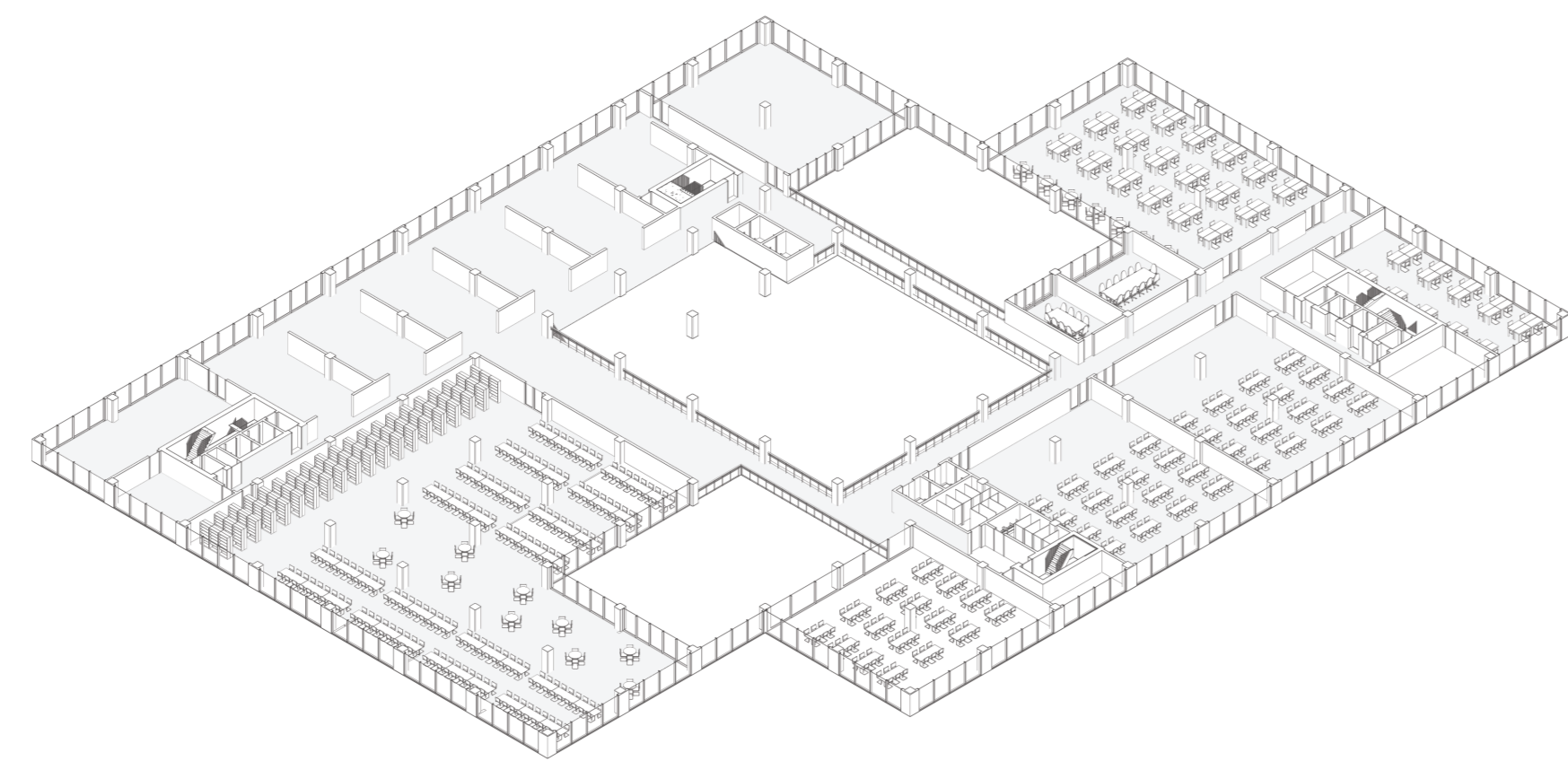
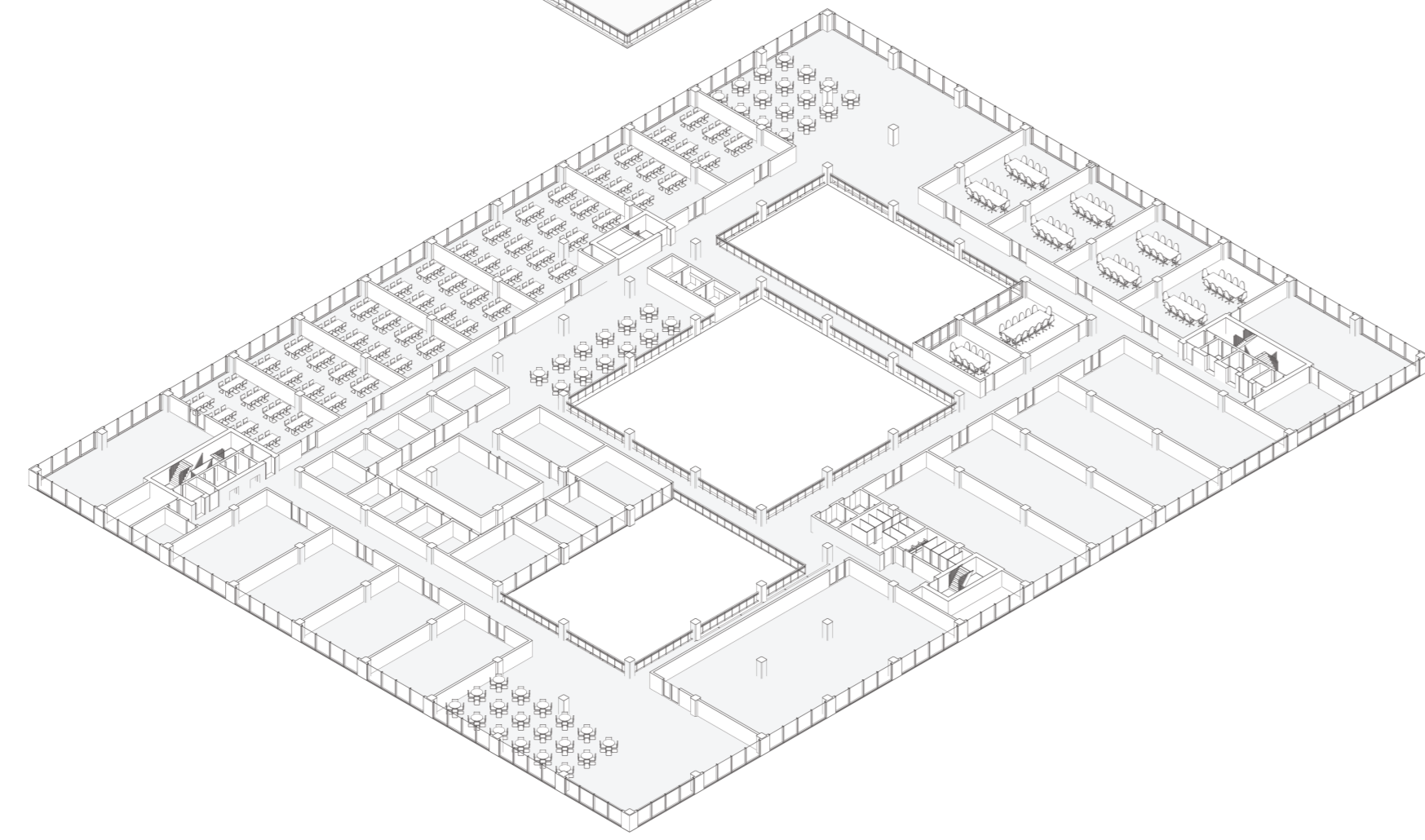
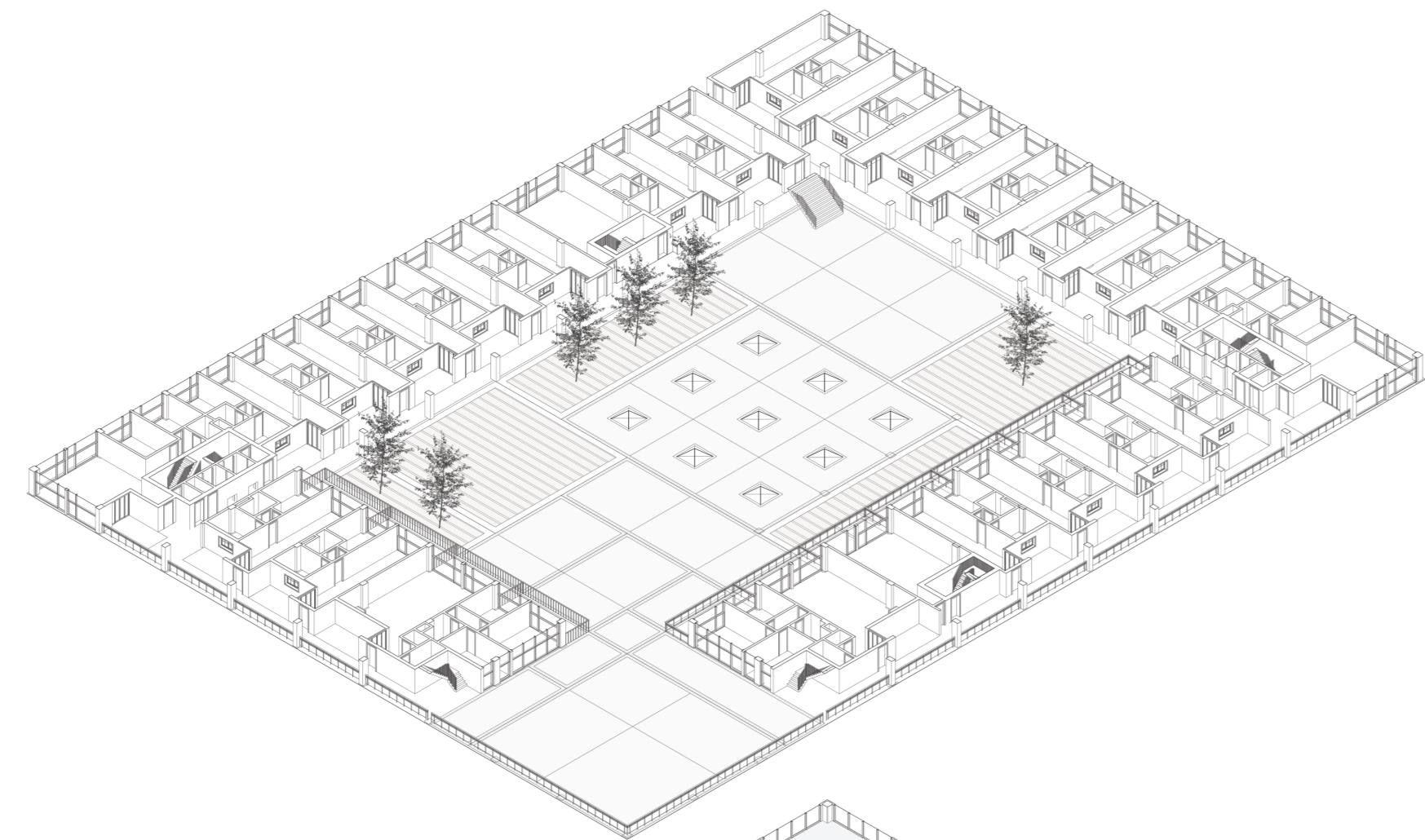
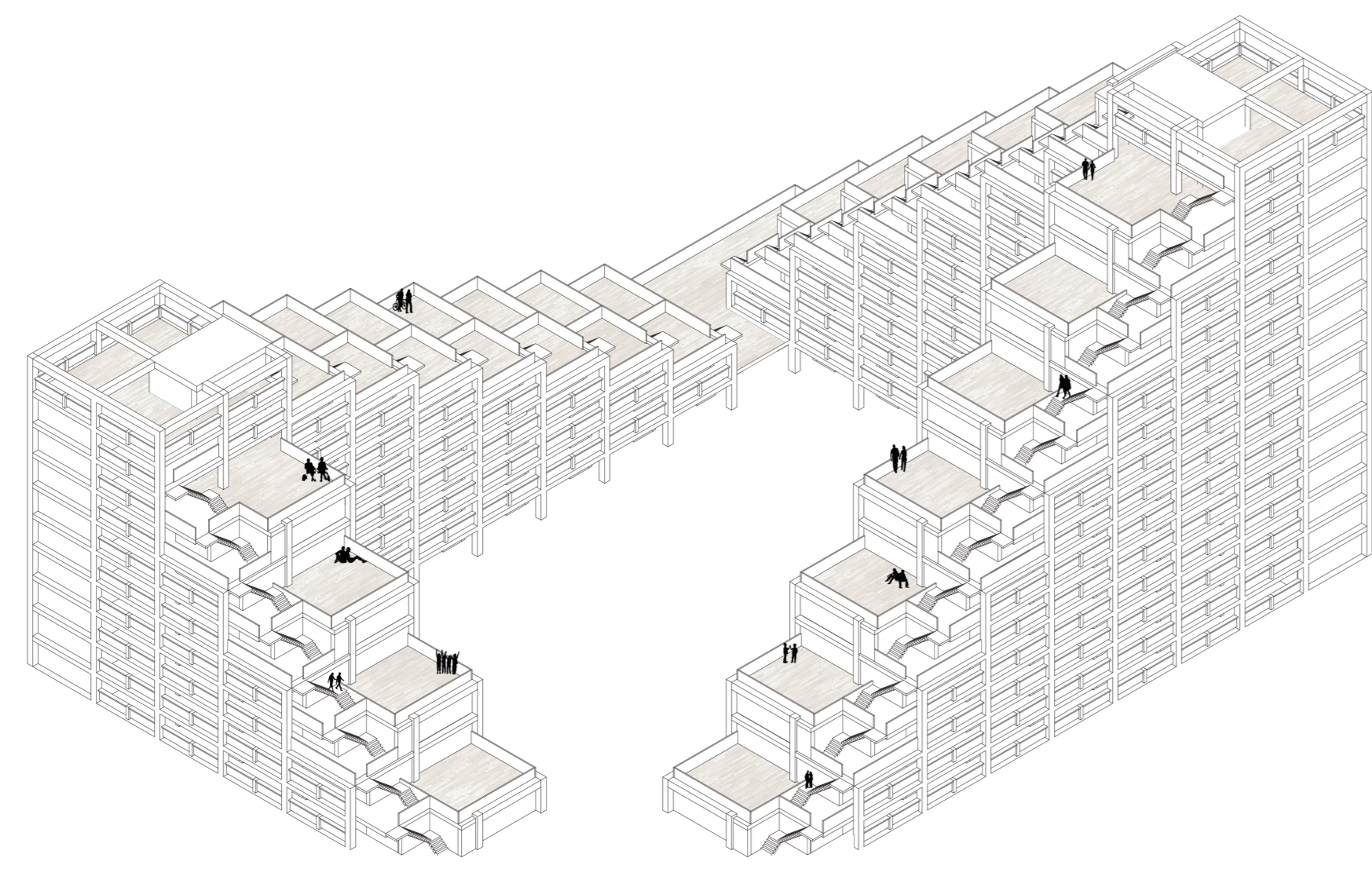


SITE PLAN

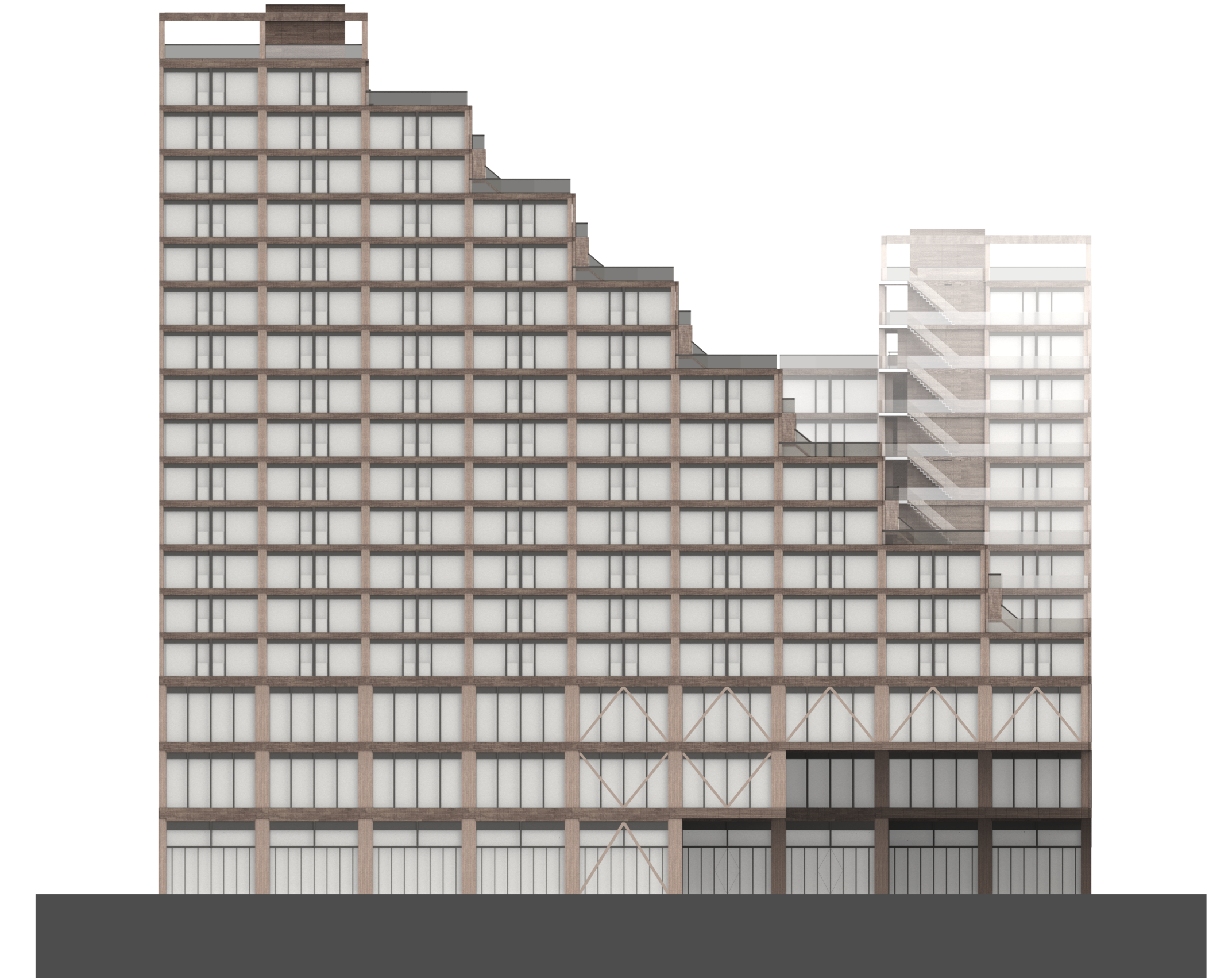


Site Plan 1:500

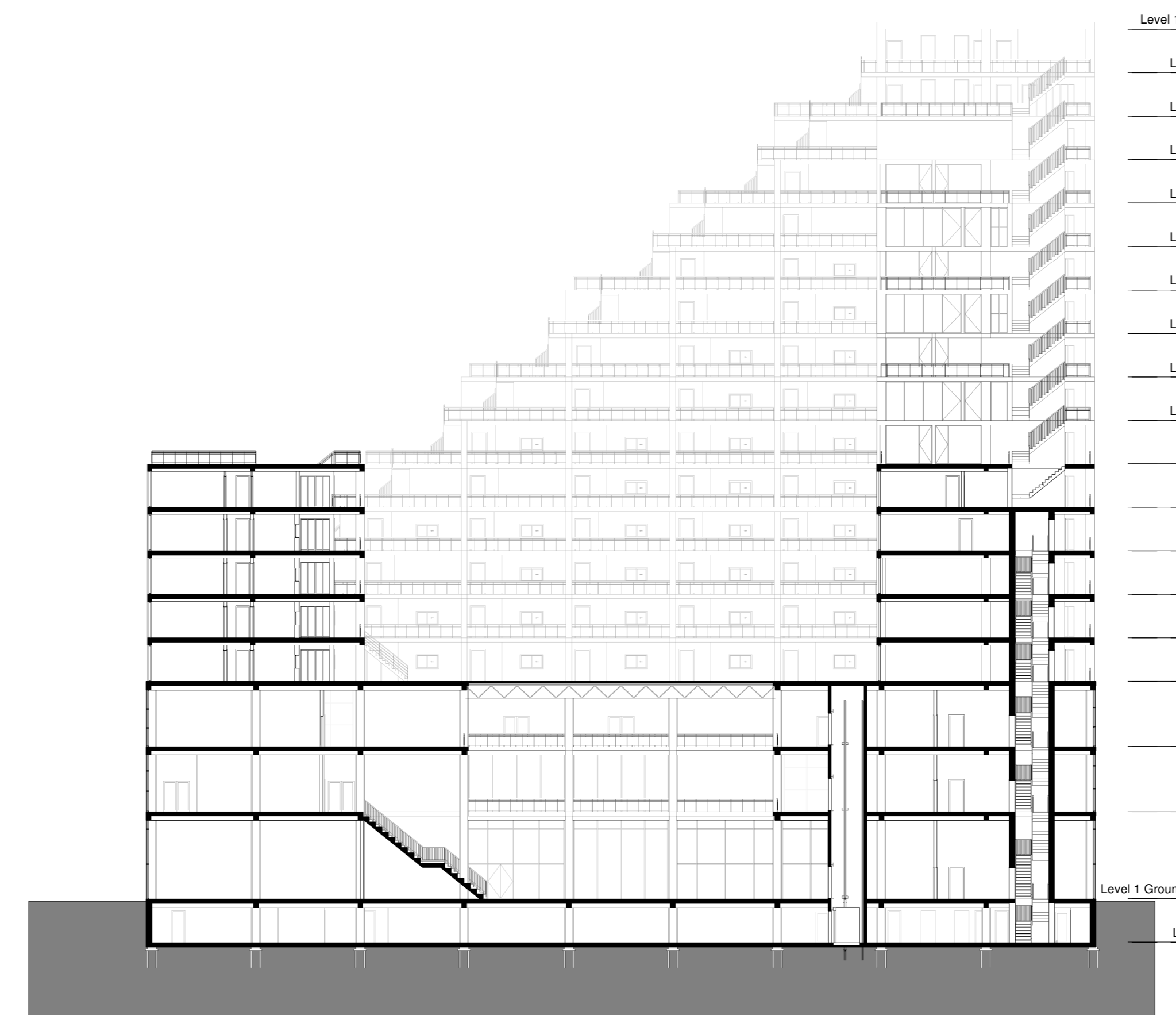
AXO/SECTION/ELEVATION



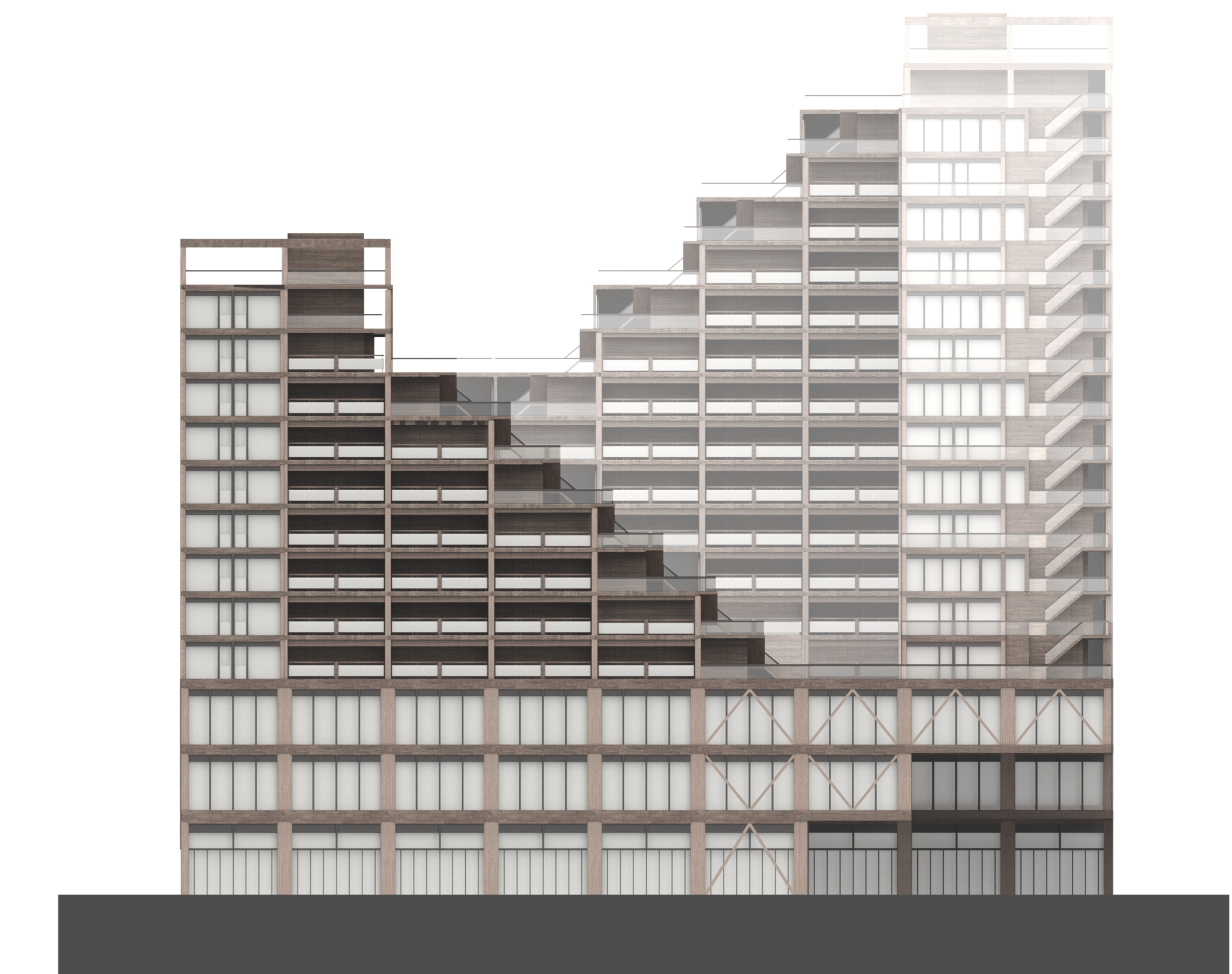
Section A 1:300



North Elevation 1:300

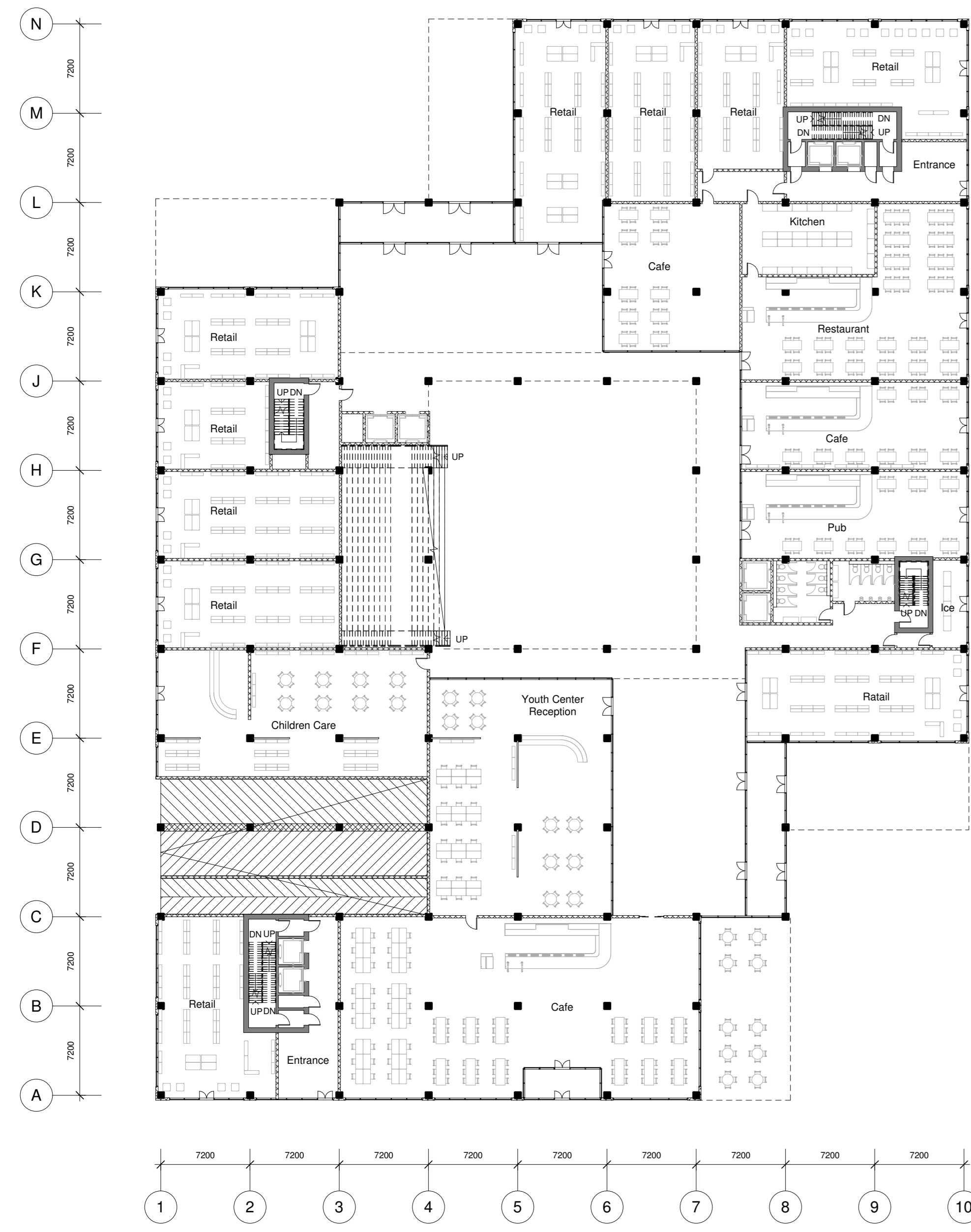


Section B 1:300

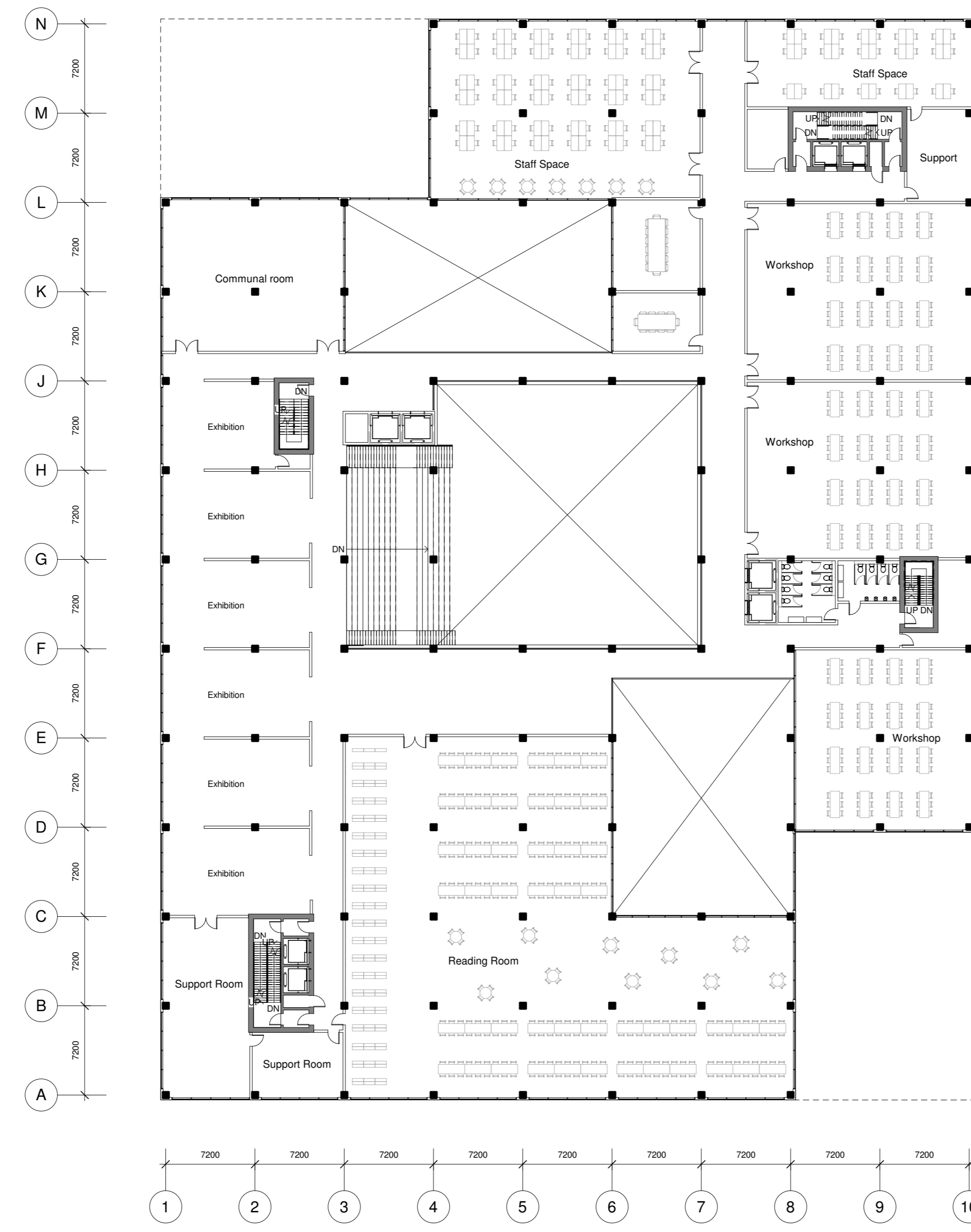


South Elevation 1:300

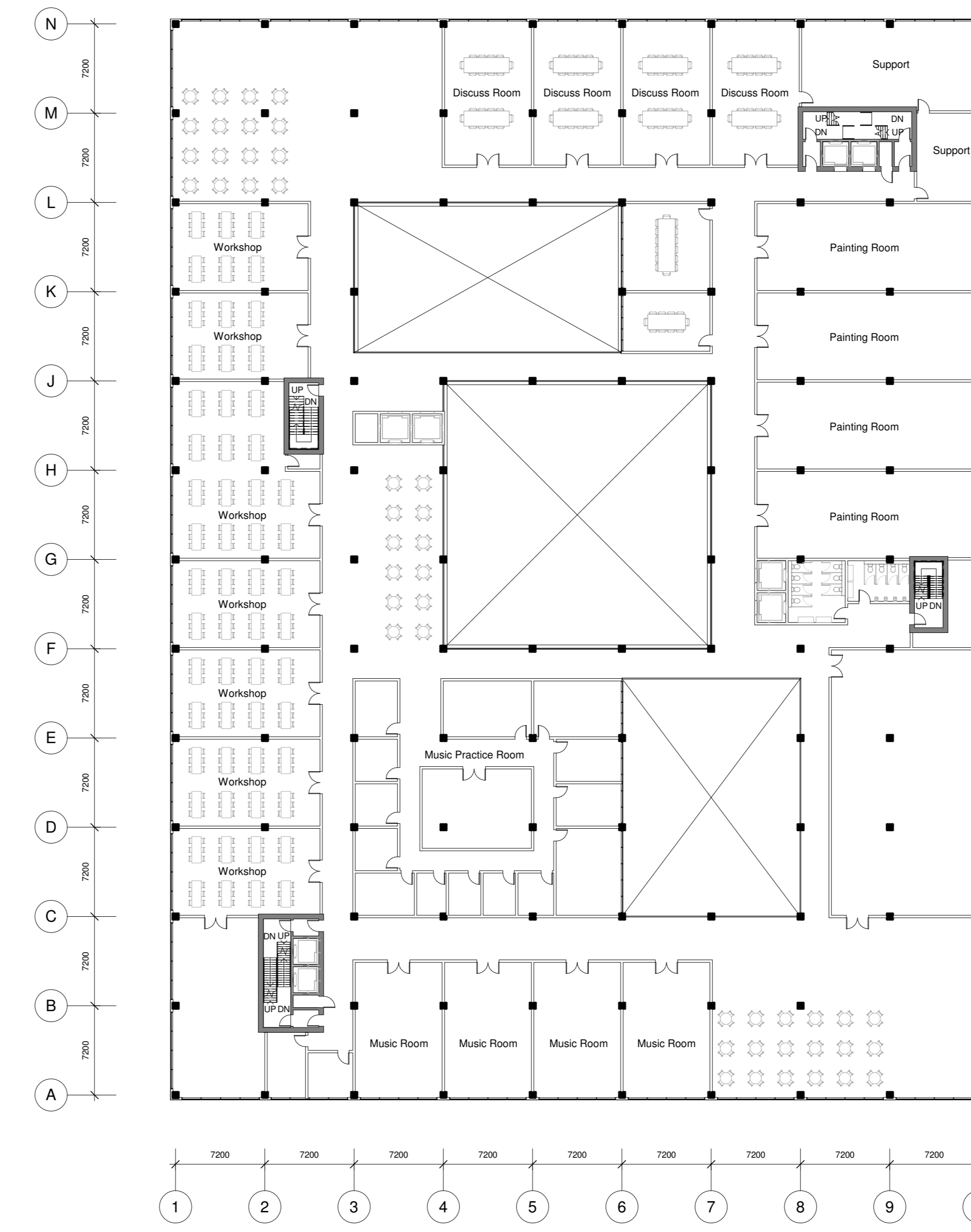
FLOOR PLANS



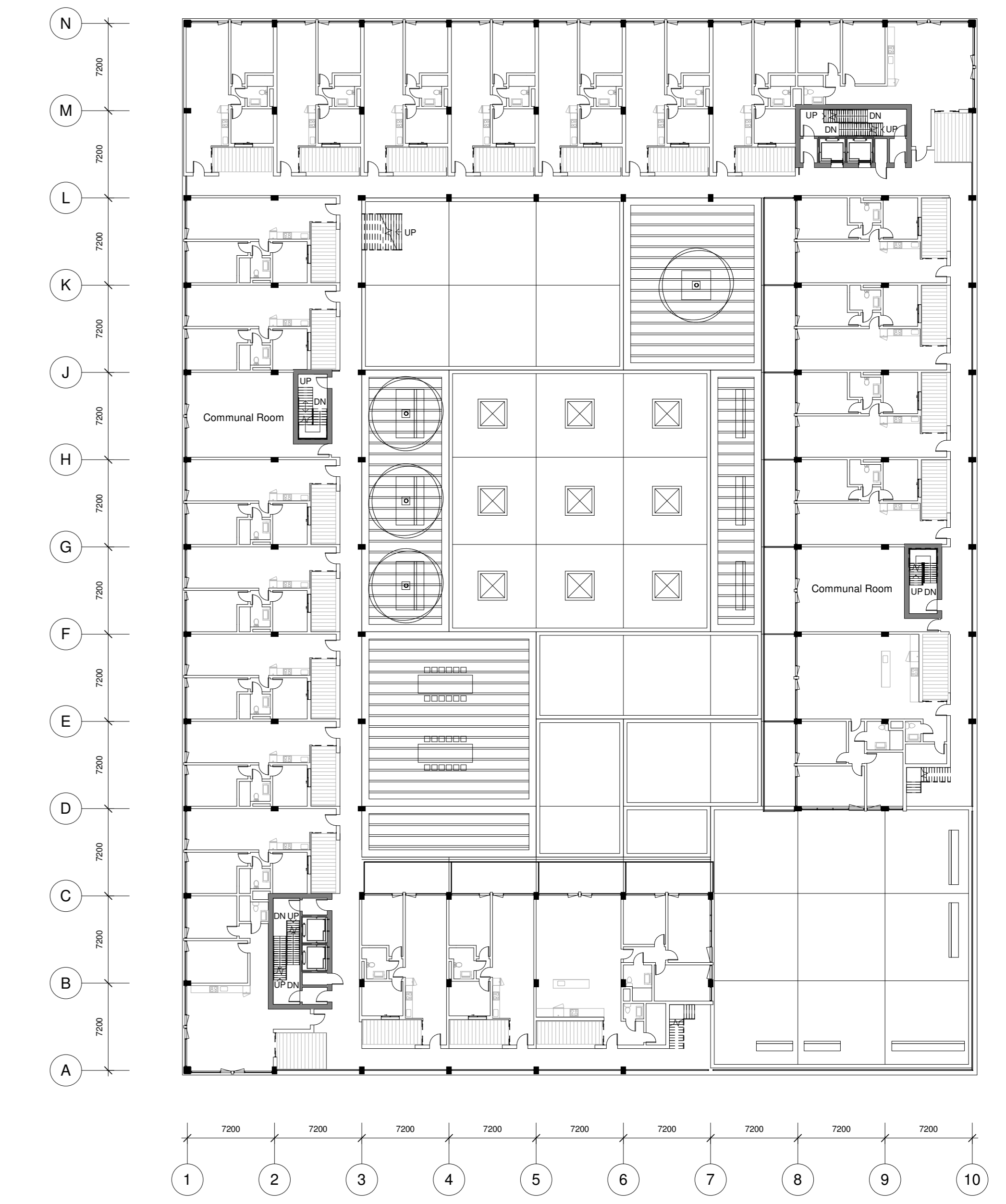
Ground Floor Plan 1:300



First Floor Plan 1:300



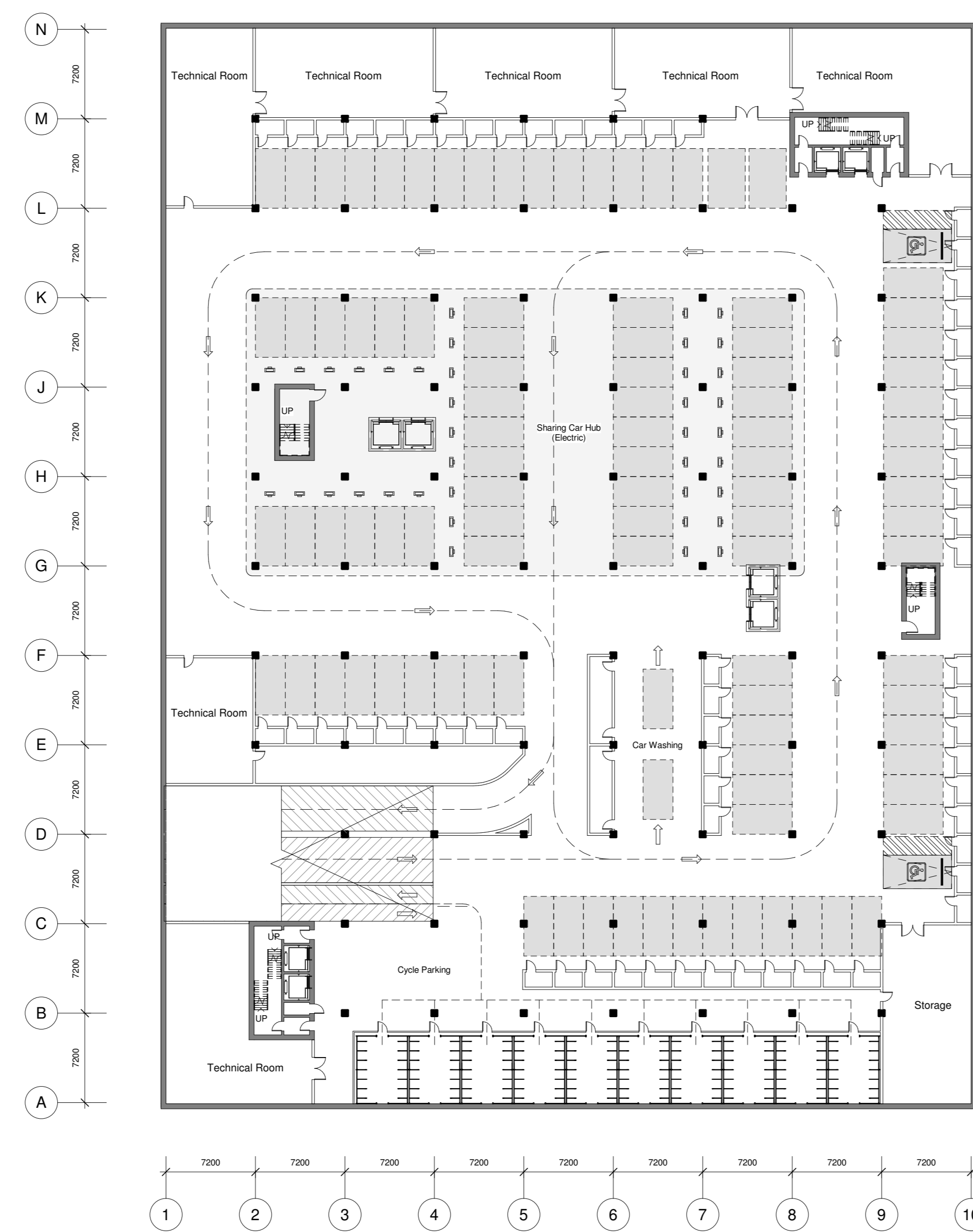
Second Floor Plan 1:300



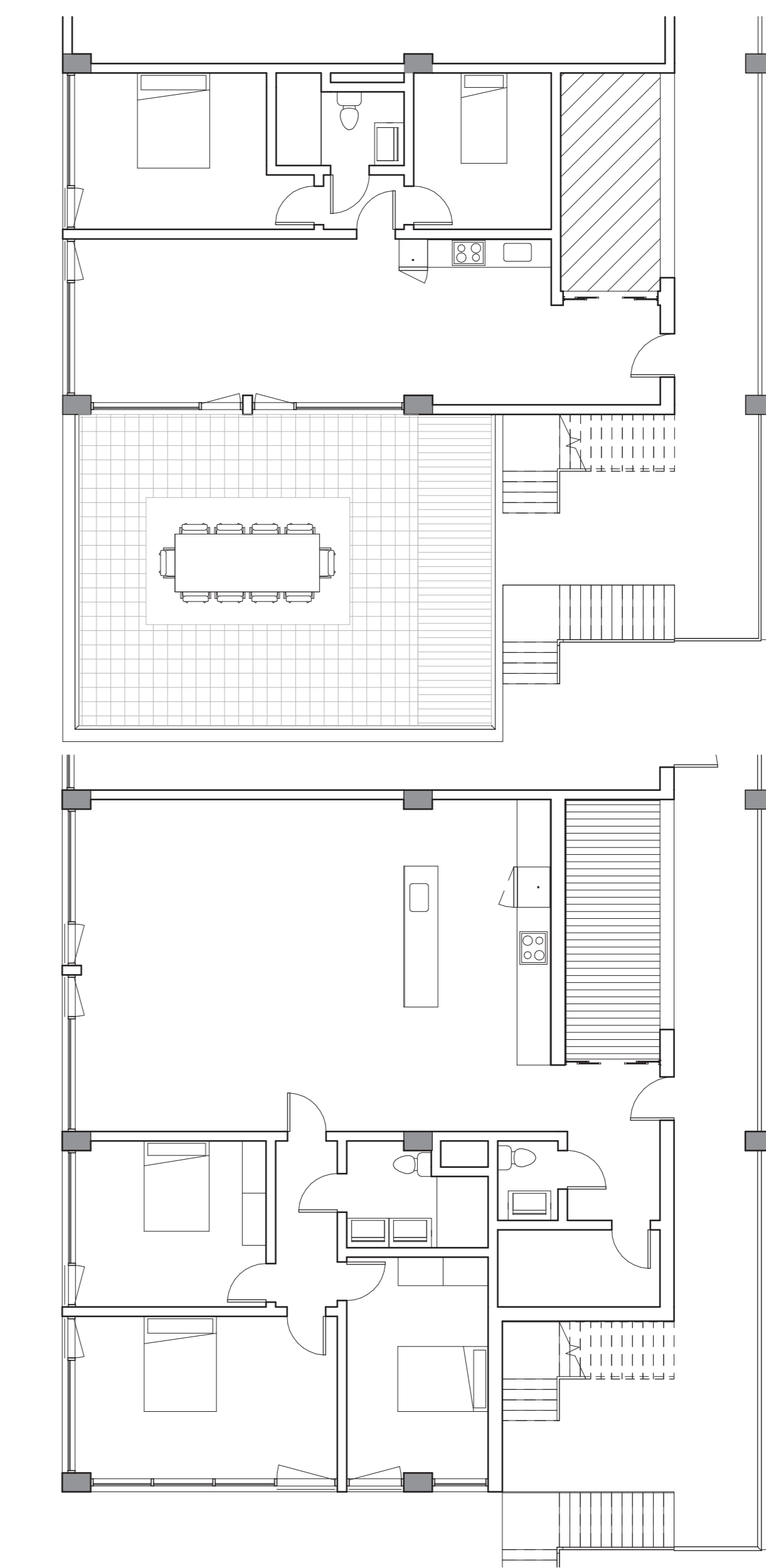
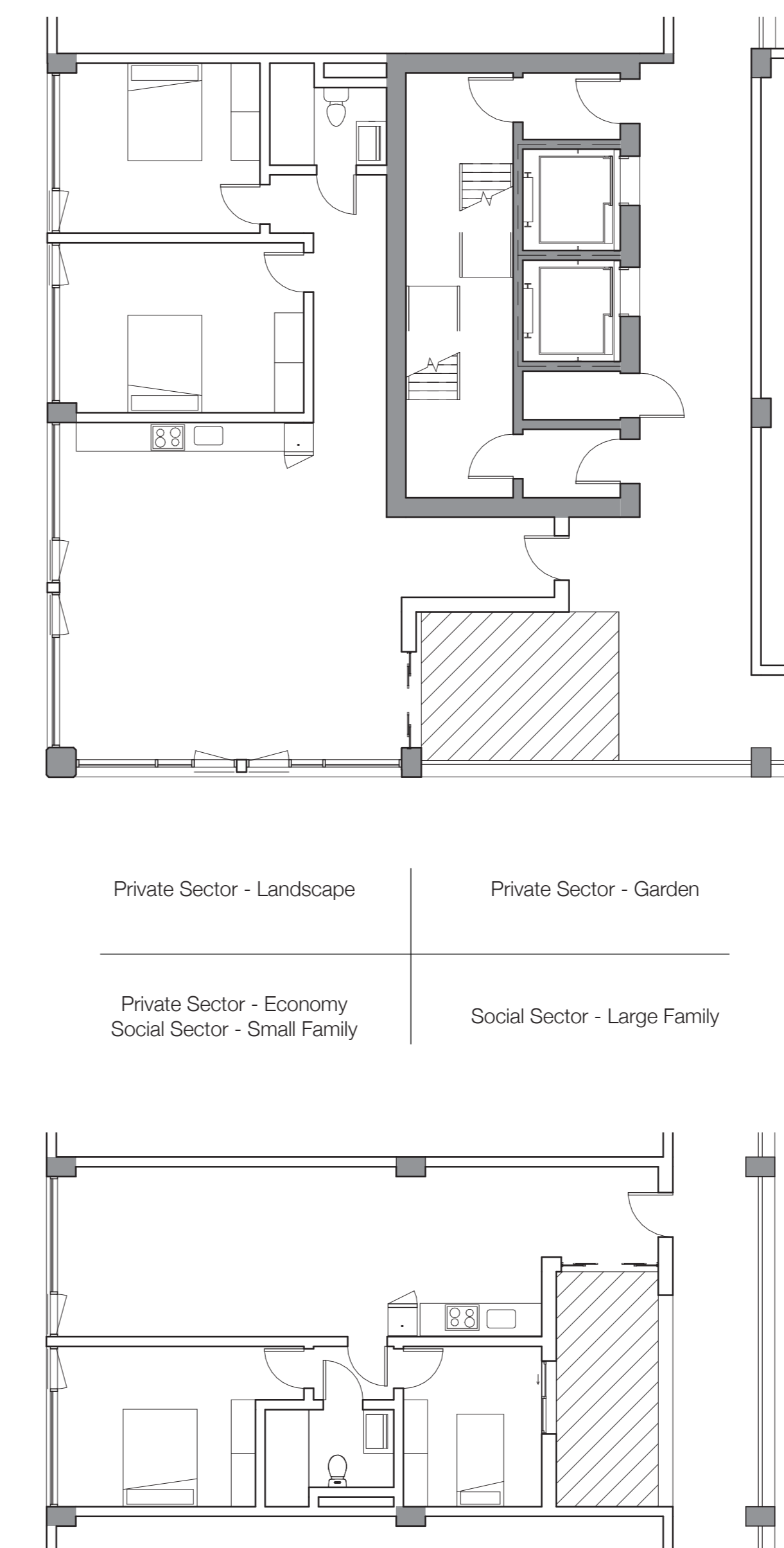
Third Floor Plan 1:300



Fourth Floor Plan 1:300

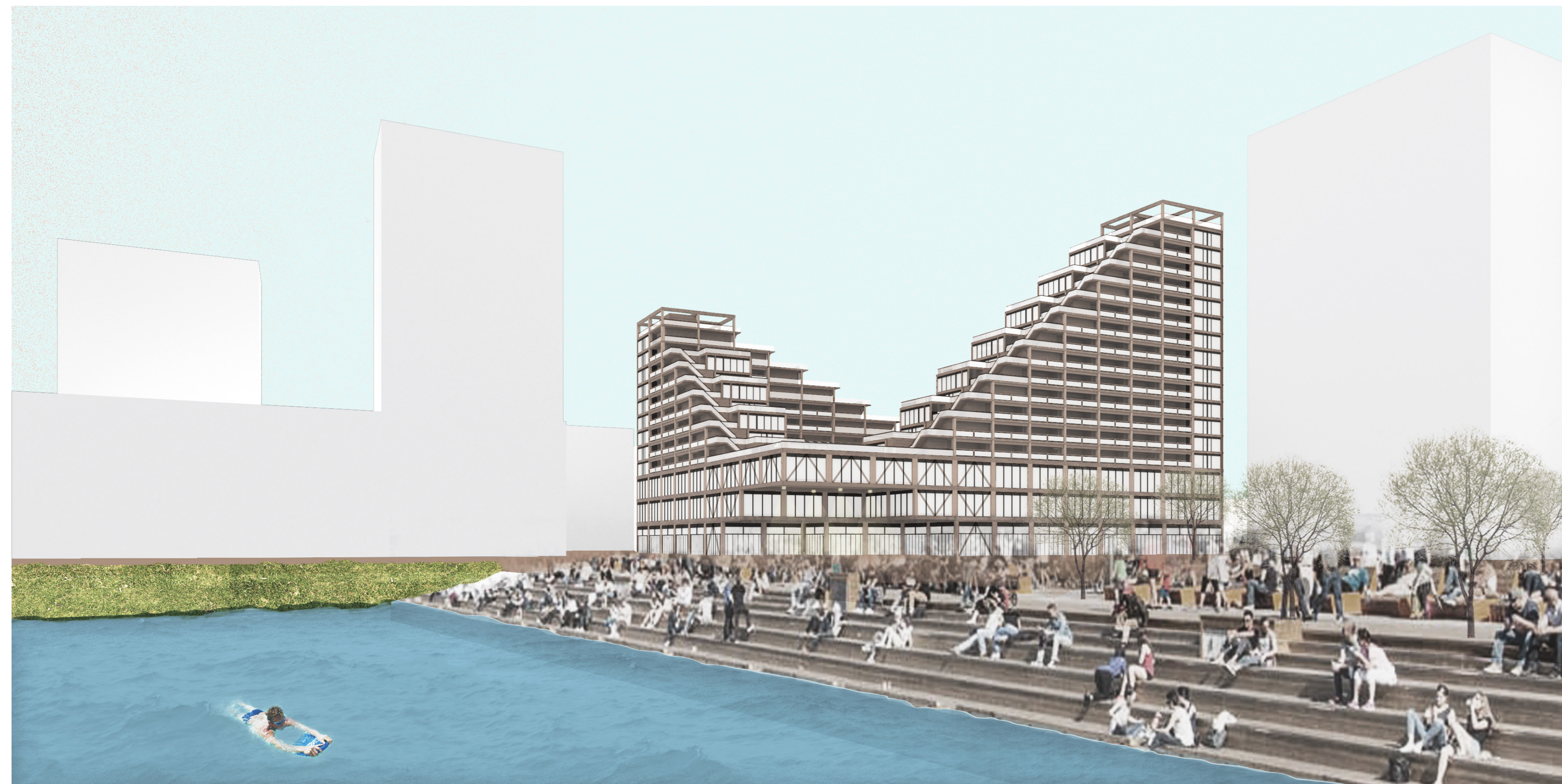


B1 Floor Plan 1:300



Housing Floor Plan 1:100

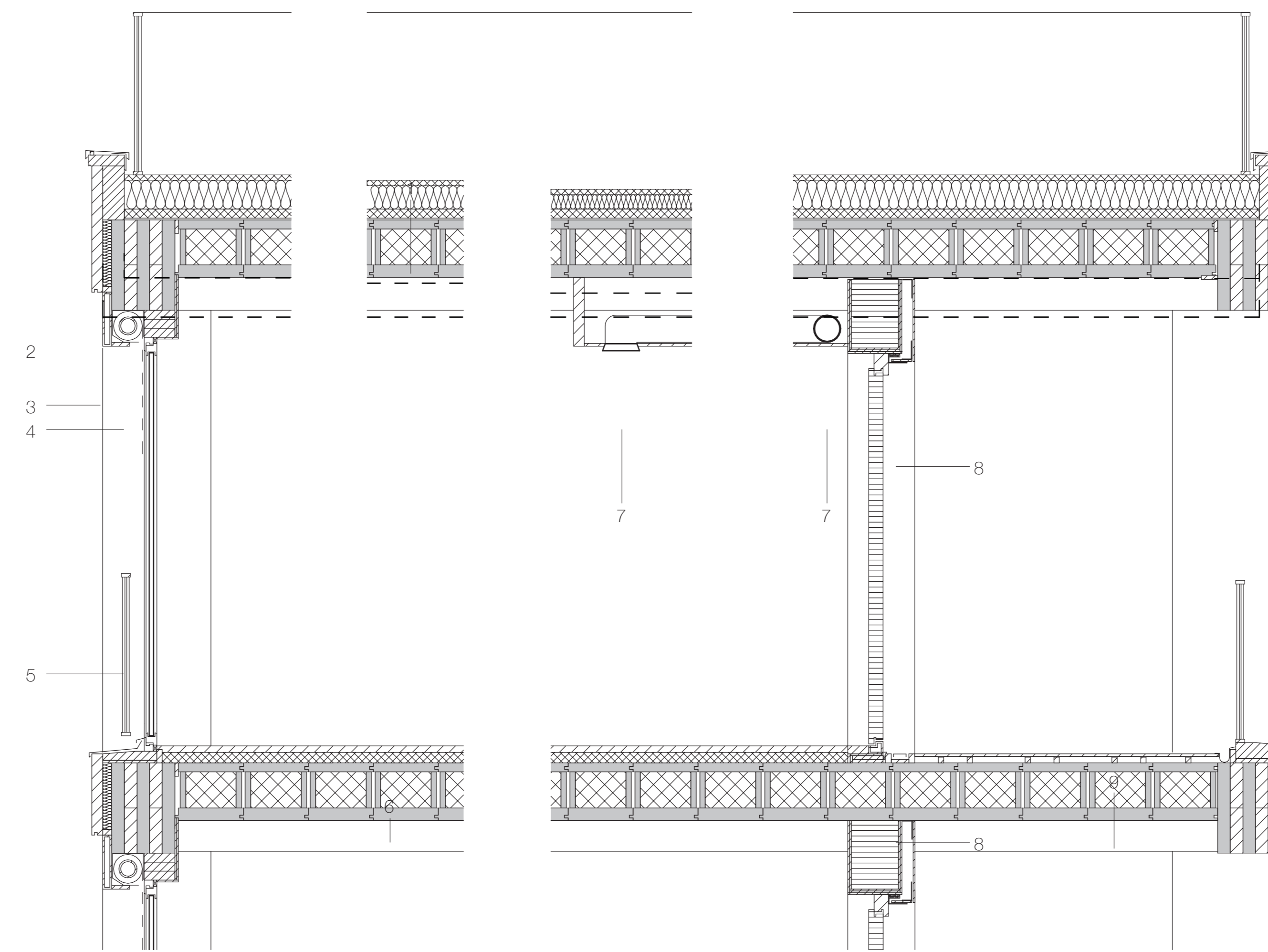
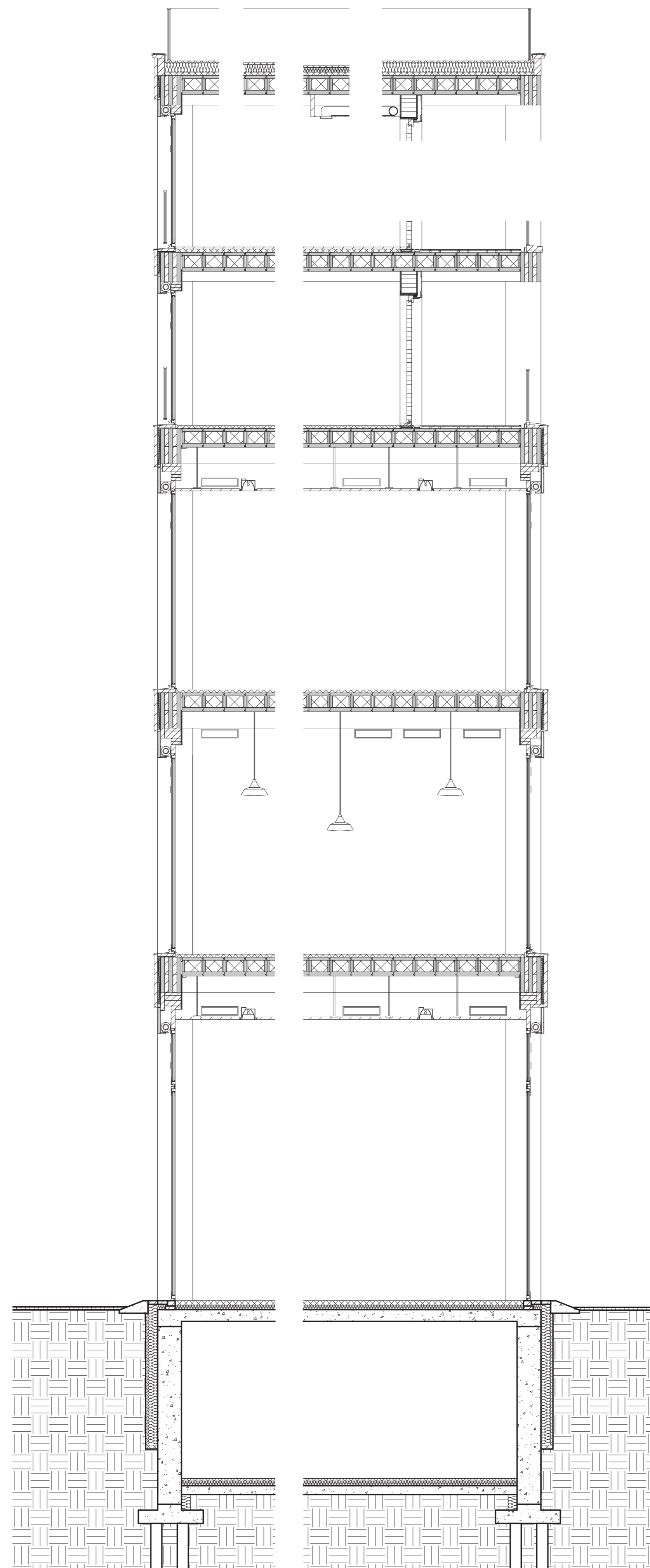
COLLAGES



DETAILS

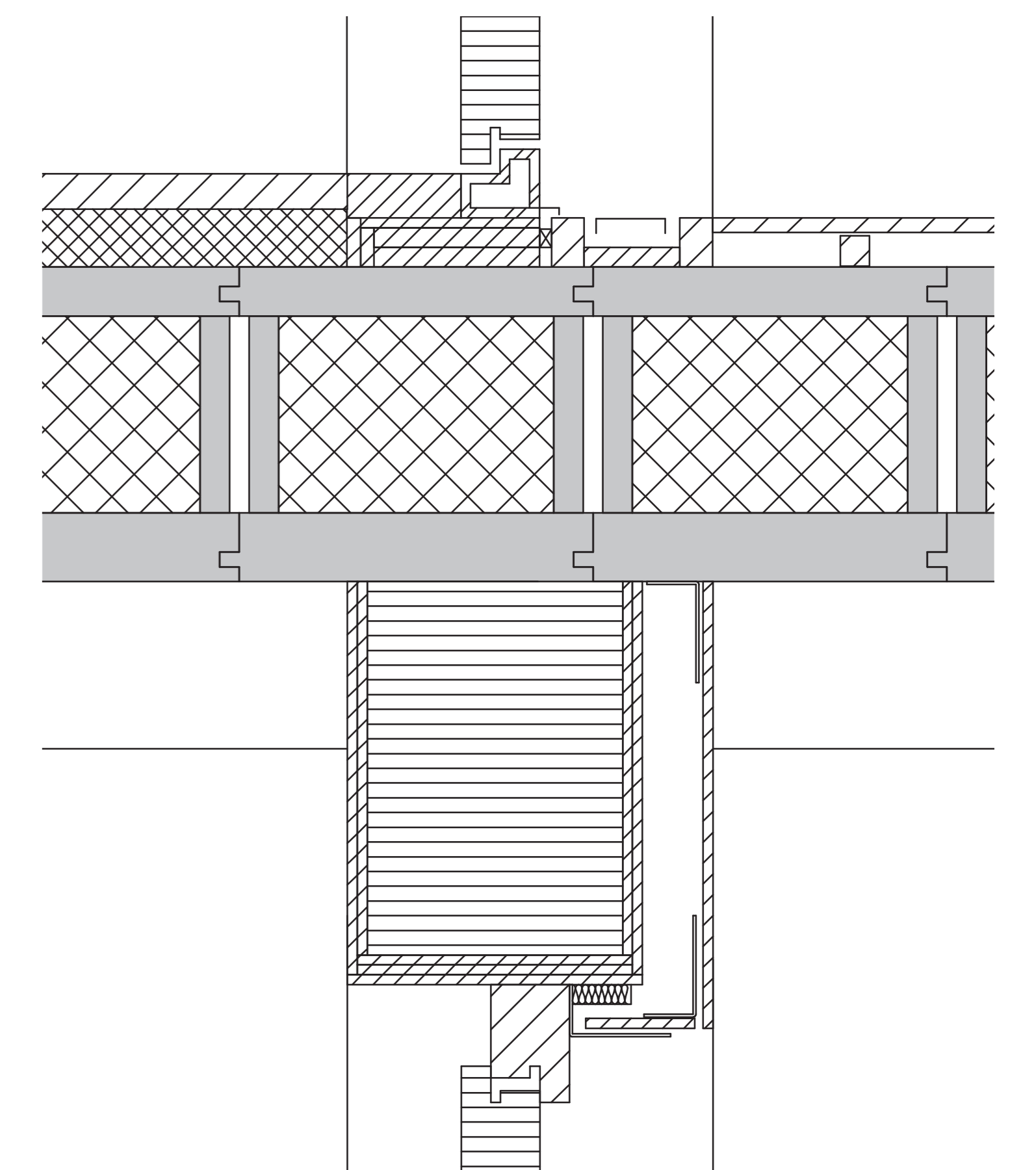
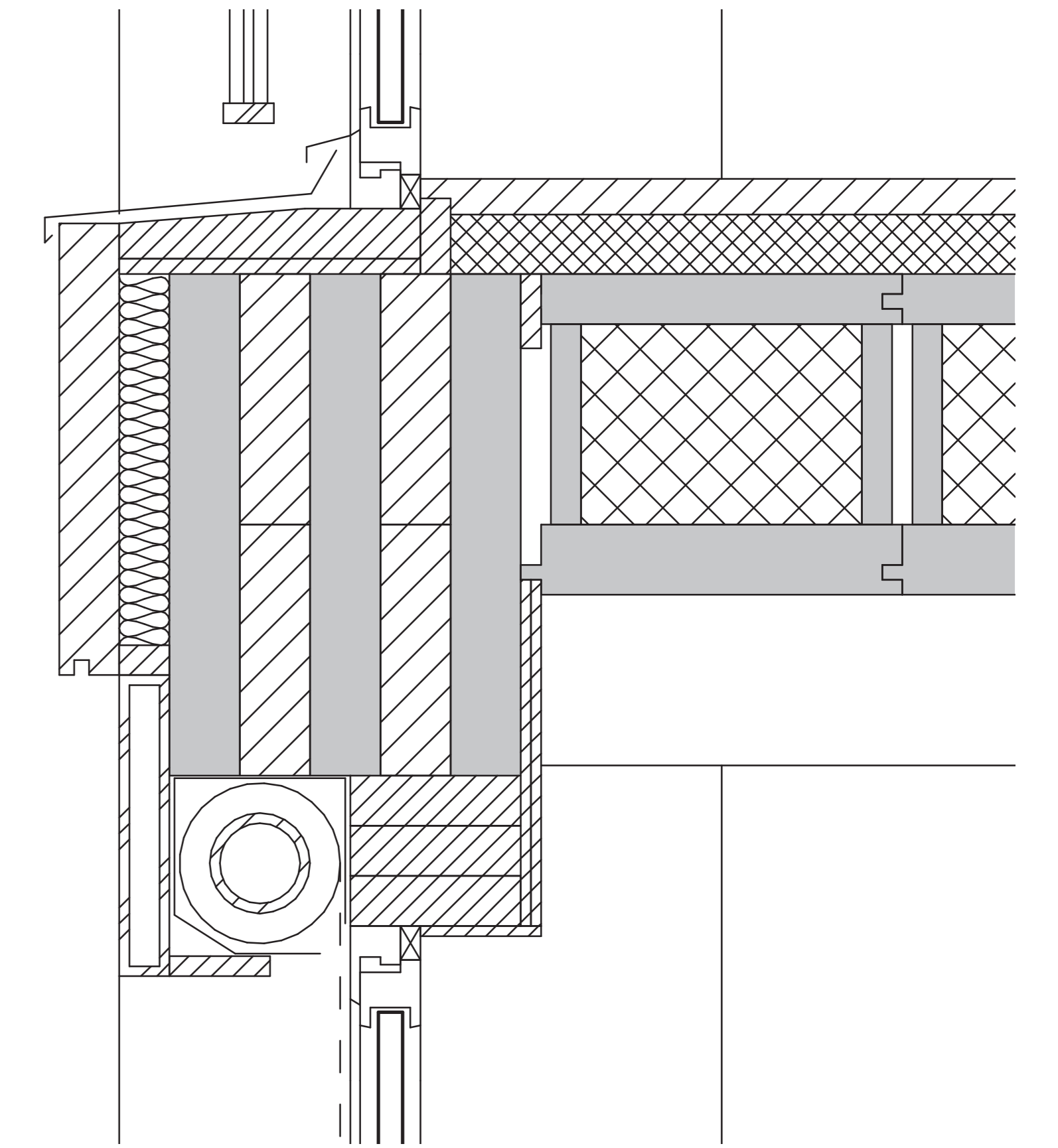


1 : 50 FACADE / SECTION



- | | |
|--|---|
| <p>1 50 mm gravel
6 mm building protection mat
two-ply bitumen seal ,
80-120 mm EPS thermal insulation laid to falls +
60 mm PUR-rigid foam
vapour barrier (emergency seal),
320 mm cross laminated floor box, filled with cellulose
(exposed ceiling)</p> <p>2 60 x 700 mm Accoya wood plate, dark brown</p> <p>3 50 x 300 mm aluminium plate, dark grey</p> <p>4 roller shutter box,
plastic louvers</p> | <p>5 steel rod railings, galvanized</p> <p>6 2.5 mm linoleum on
2 mm levelling compound
50 mm cement screed
separating layer
60 mm mineral fibre footfall
sound insulation
320 mm cross laminated timber floor box
150 mm exhaust pipe</p> <p>8 wood door frame</p> |
|--|---|

1:20 DETAIL



1 : 5 DETAILS