

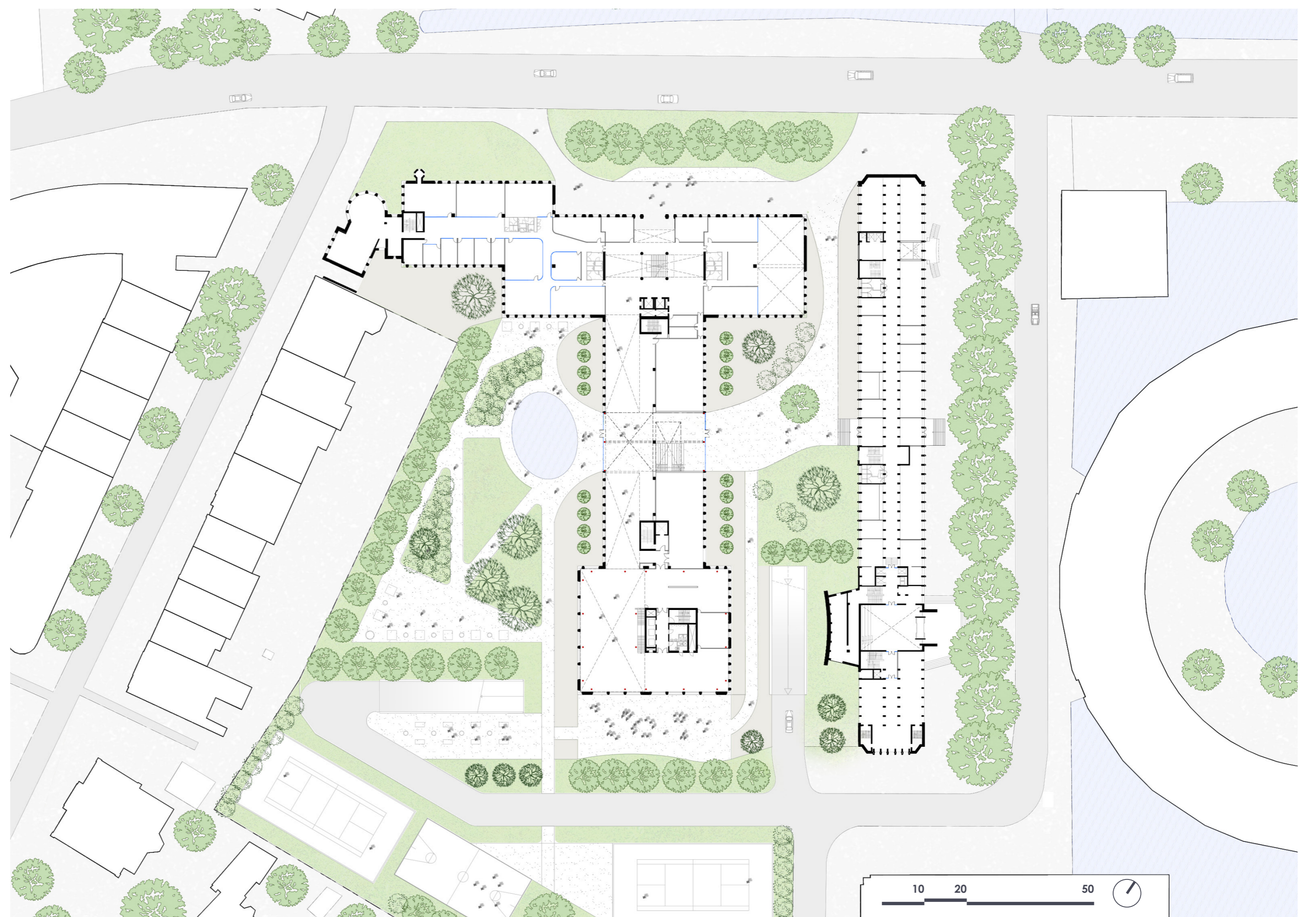
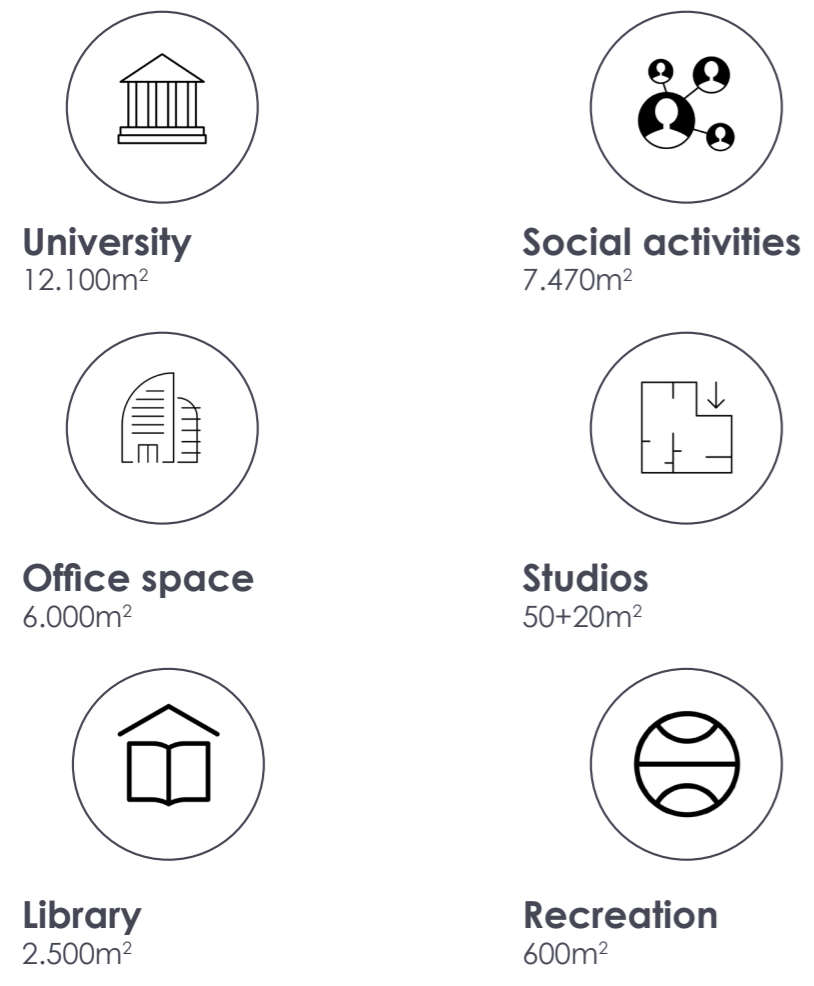
IT University & Library

The Hague, NL

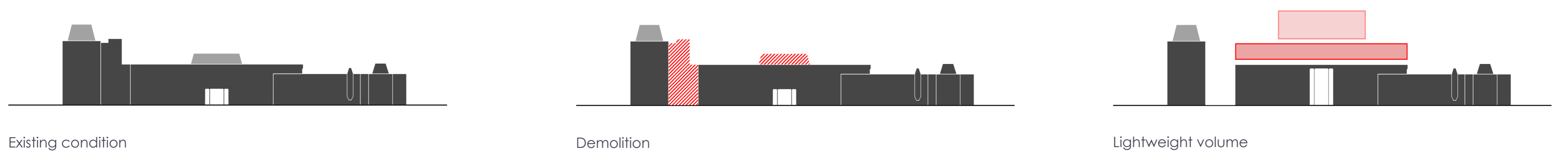
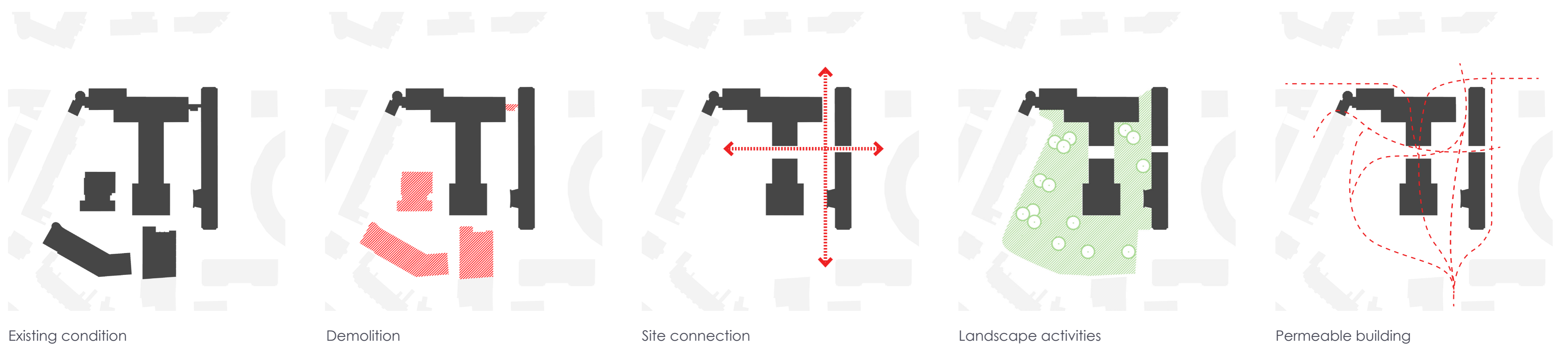
The former police headquarters in the Hague are converted into an open public complex, inviting students, locals and daily visitors, by forming innovative knowledge clusters across the community.

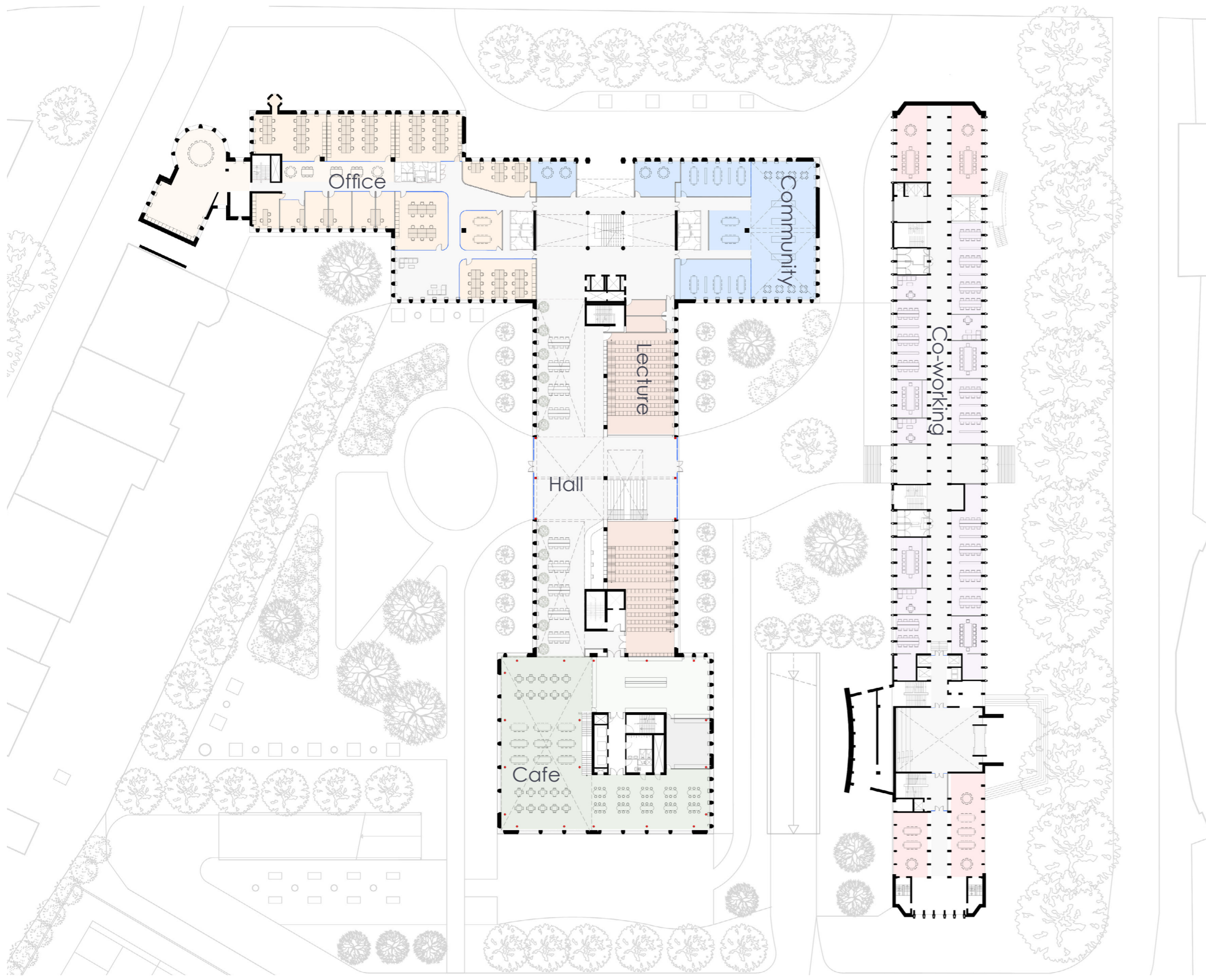
The cyber security university takes advantage of the architectural representation of the building and adds a transparent layer, on top of the existing, resembling the new public function of the former police station.

Driven by the architectural potential of the existing structure, the new design aims to showcase an approach that improves the spatial qualities and the adaptability of the existing building.

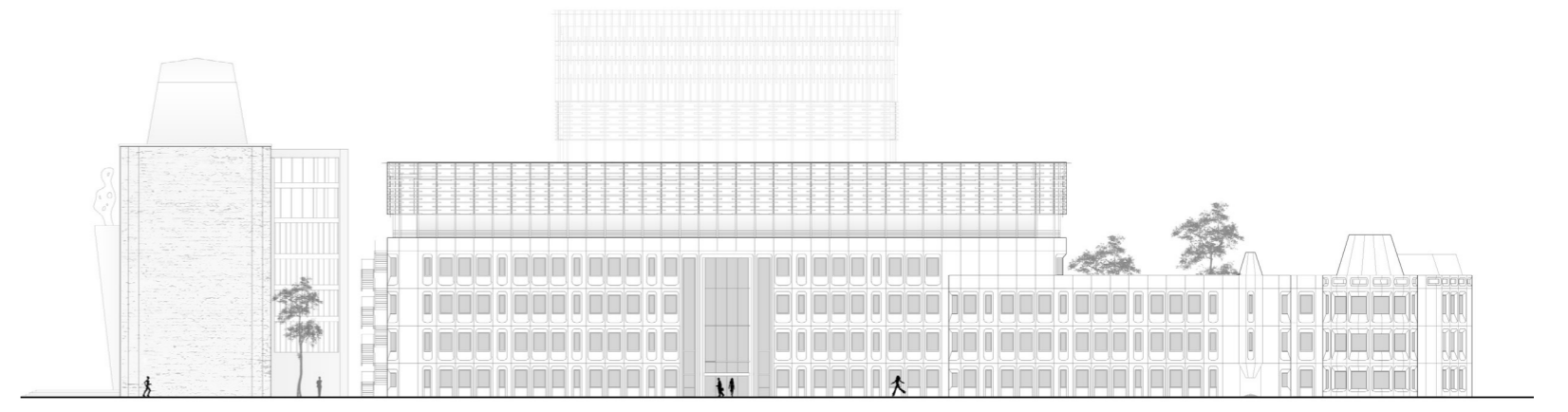


Concept

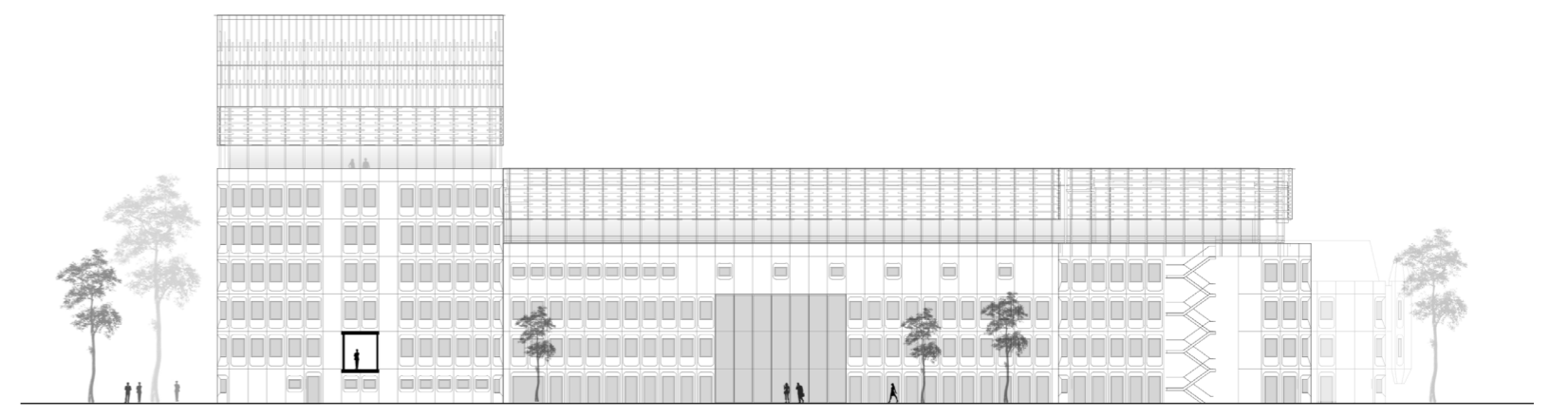




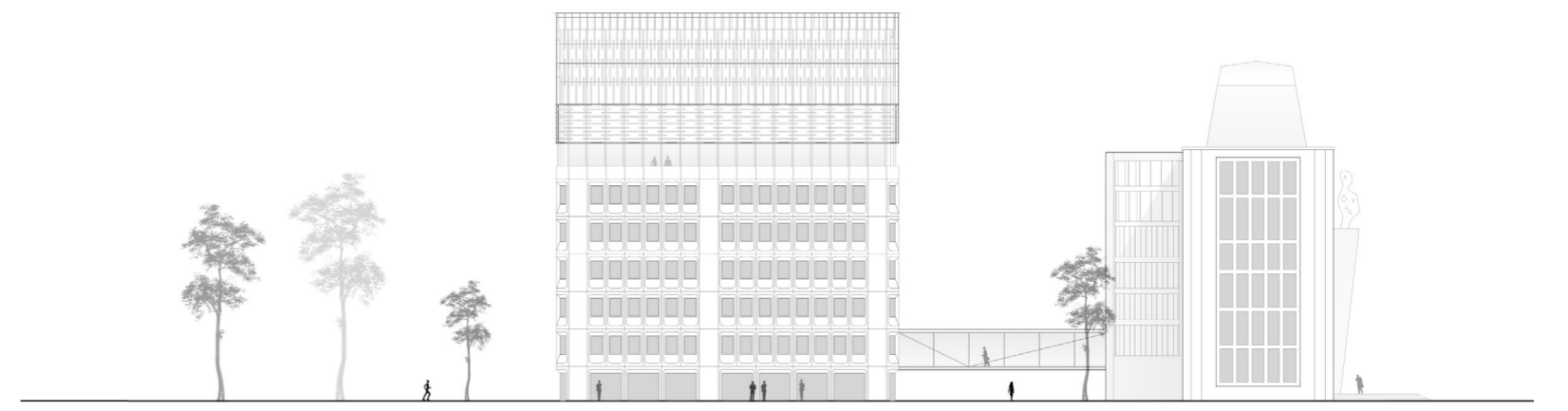
Ground floor



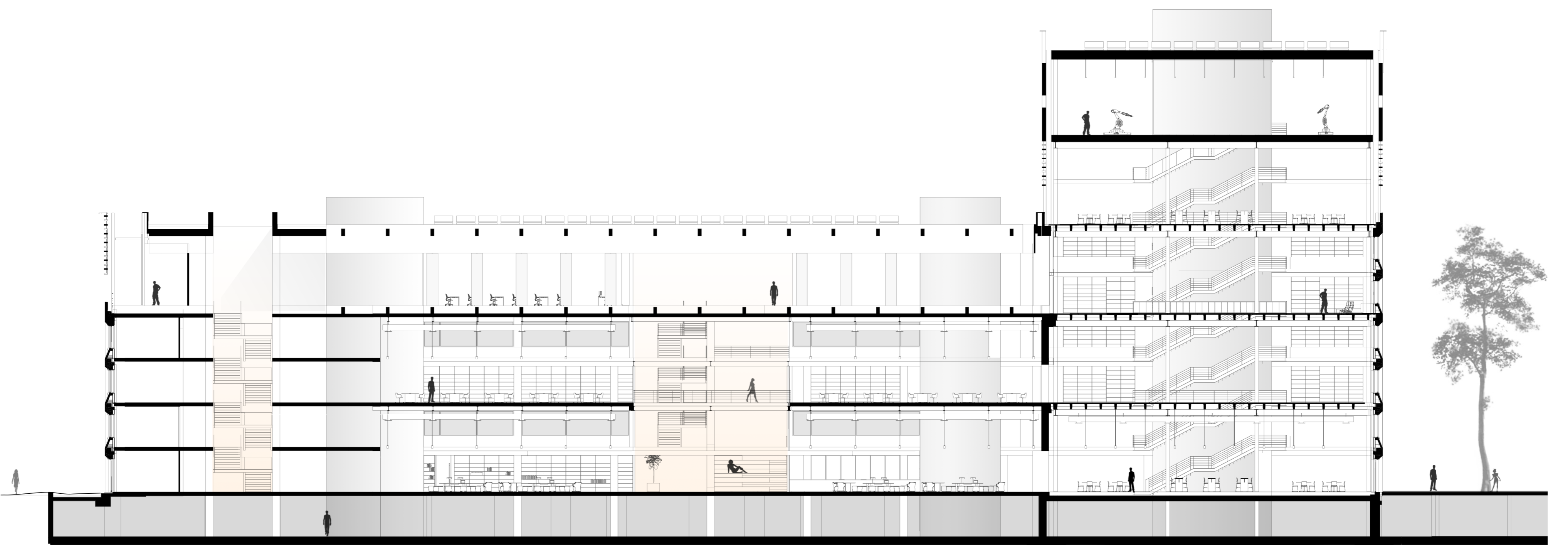
North-West elevation



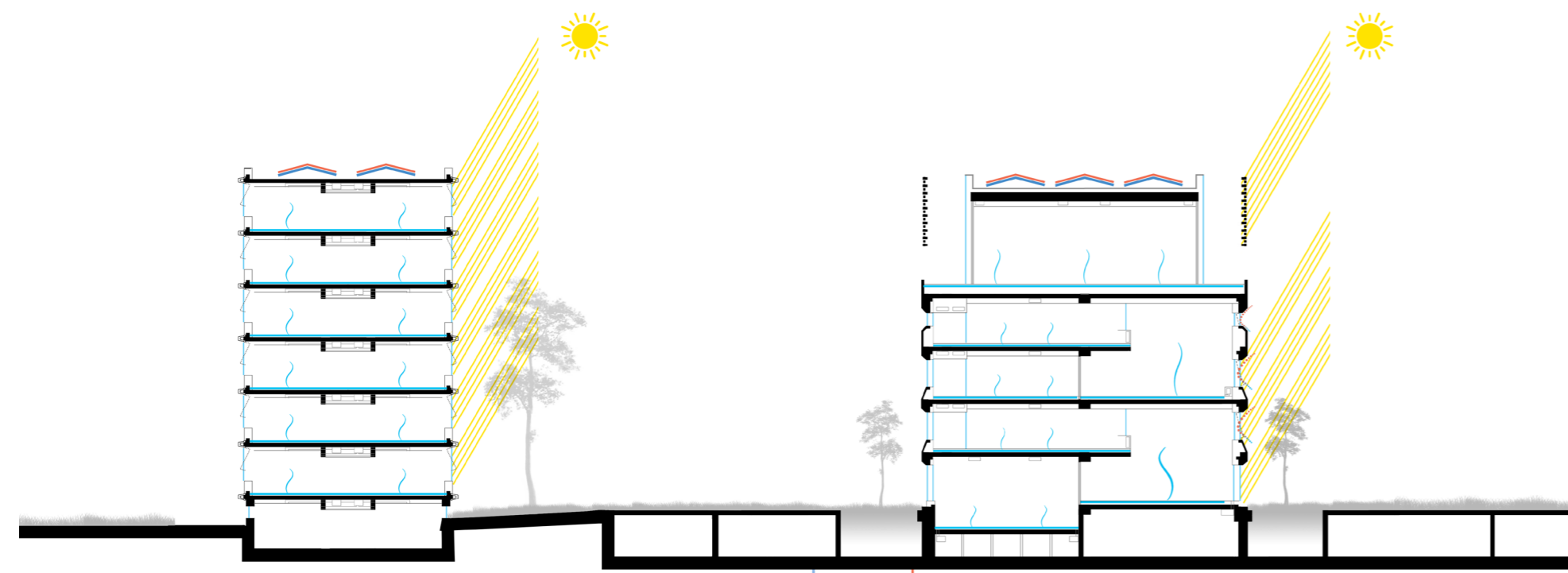
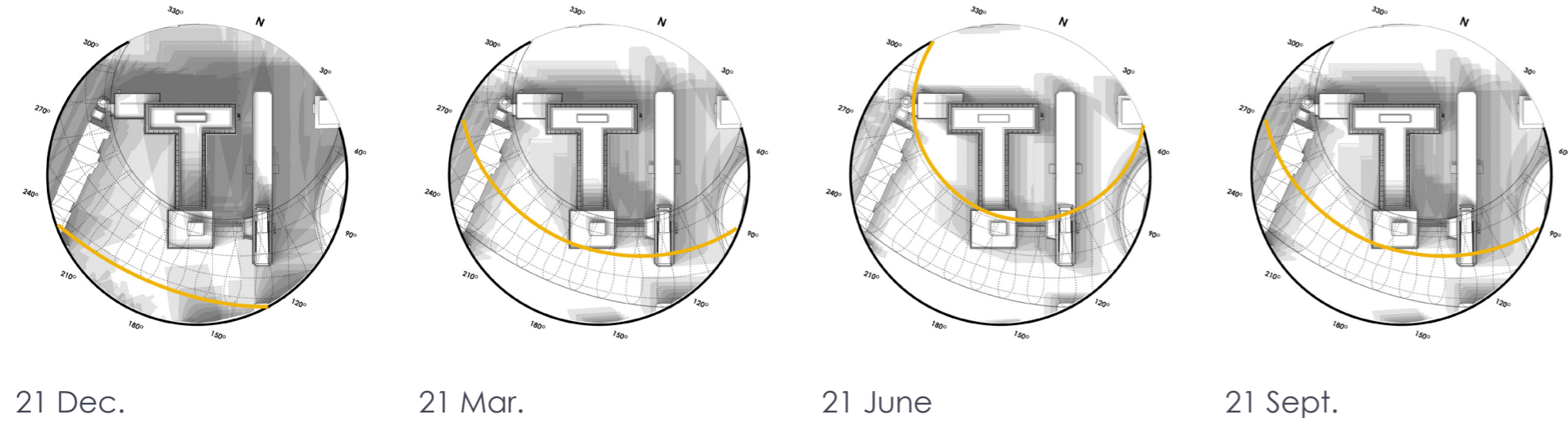
North-East elevation



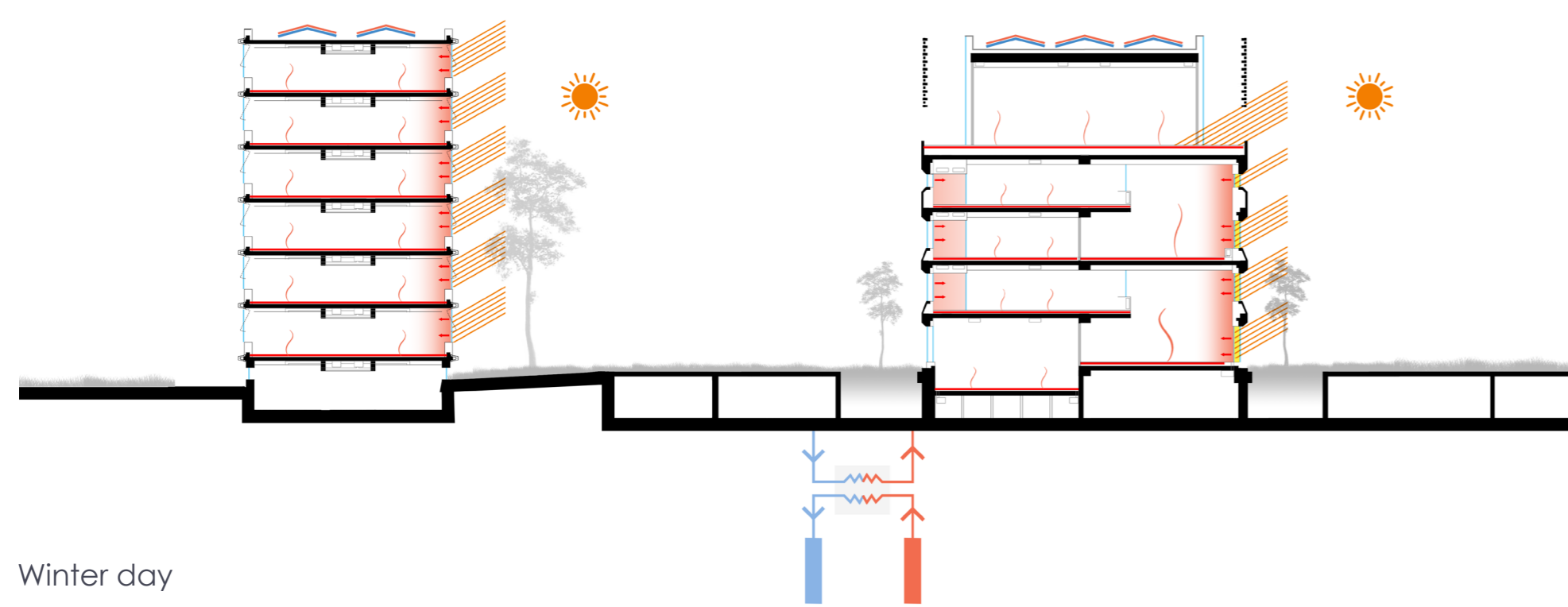
South-West elevation



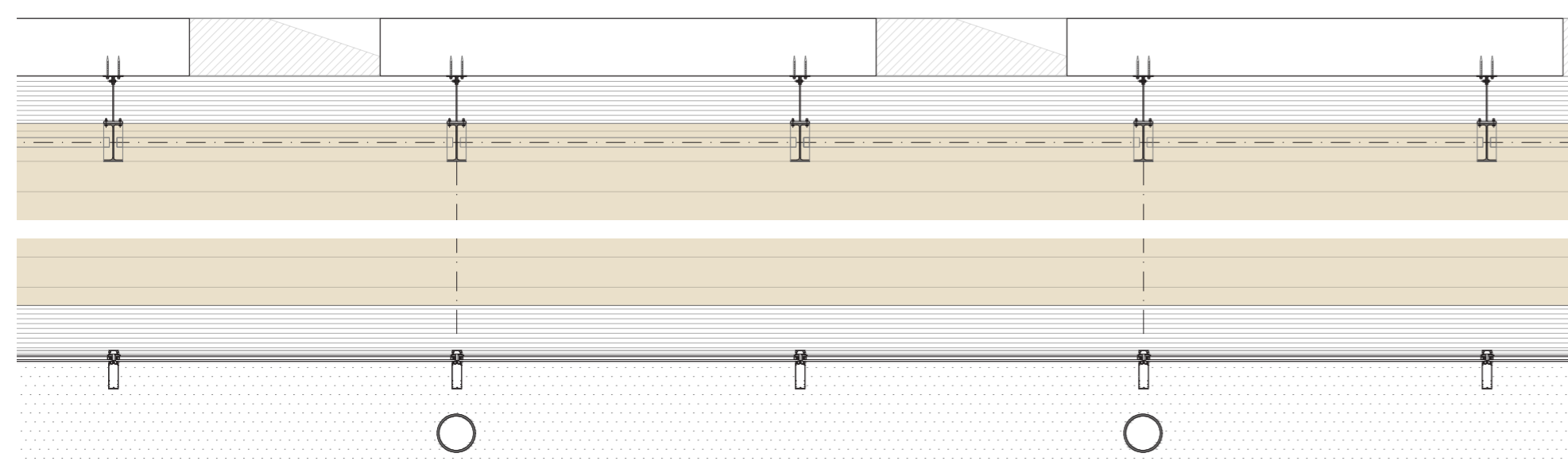
Solar diagrams



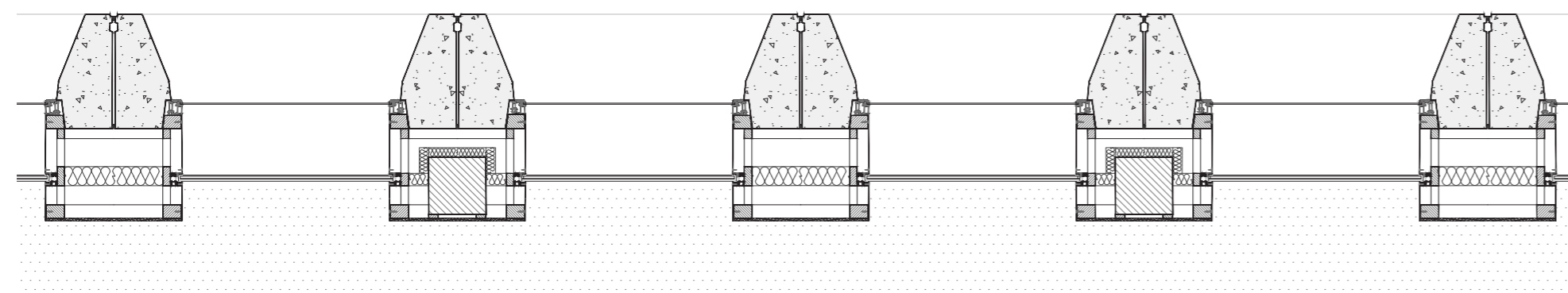
Summer day



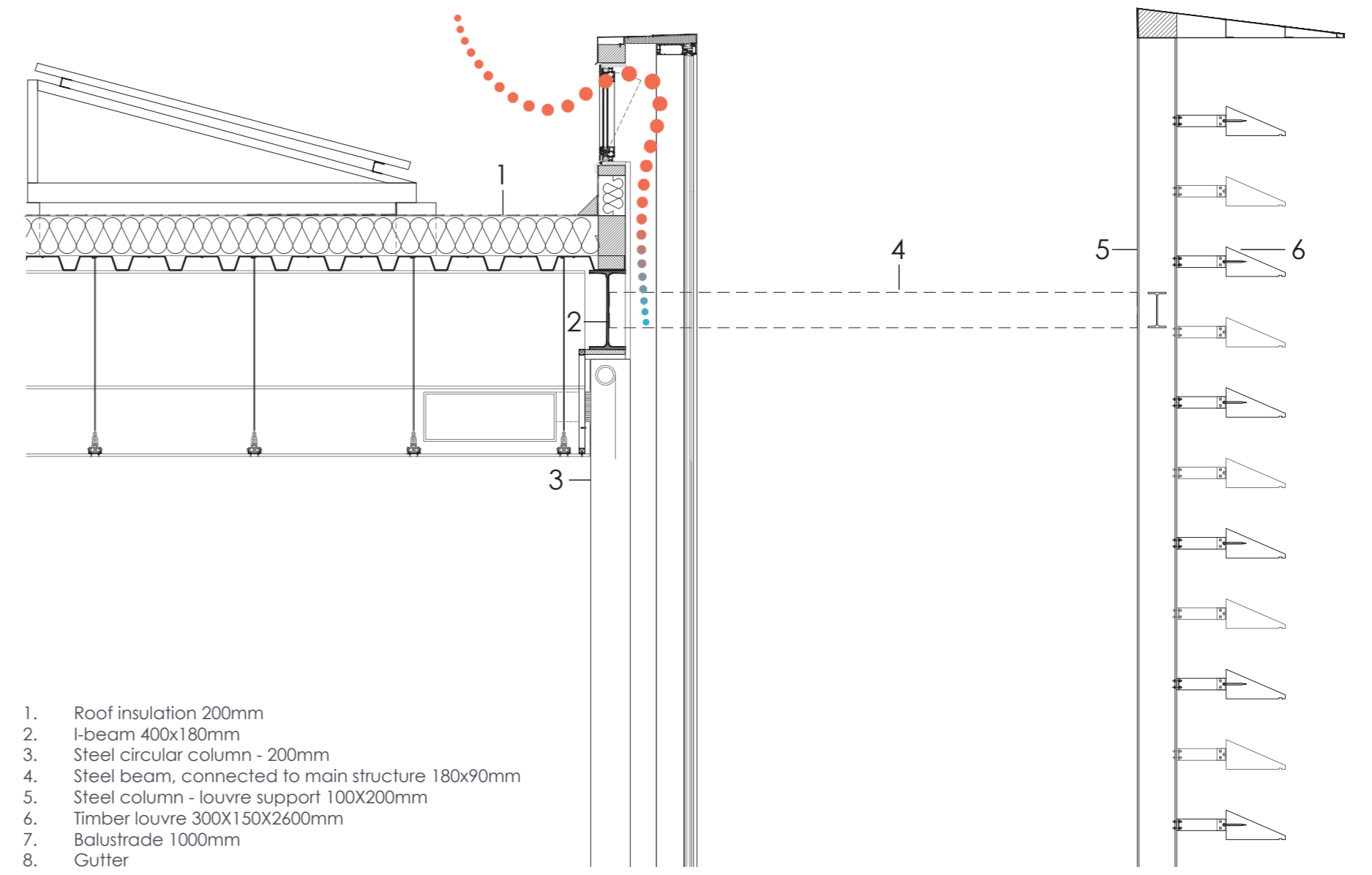
Winter day



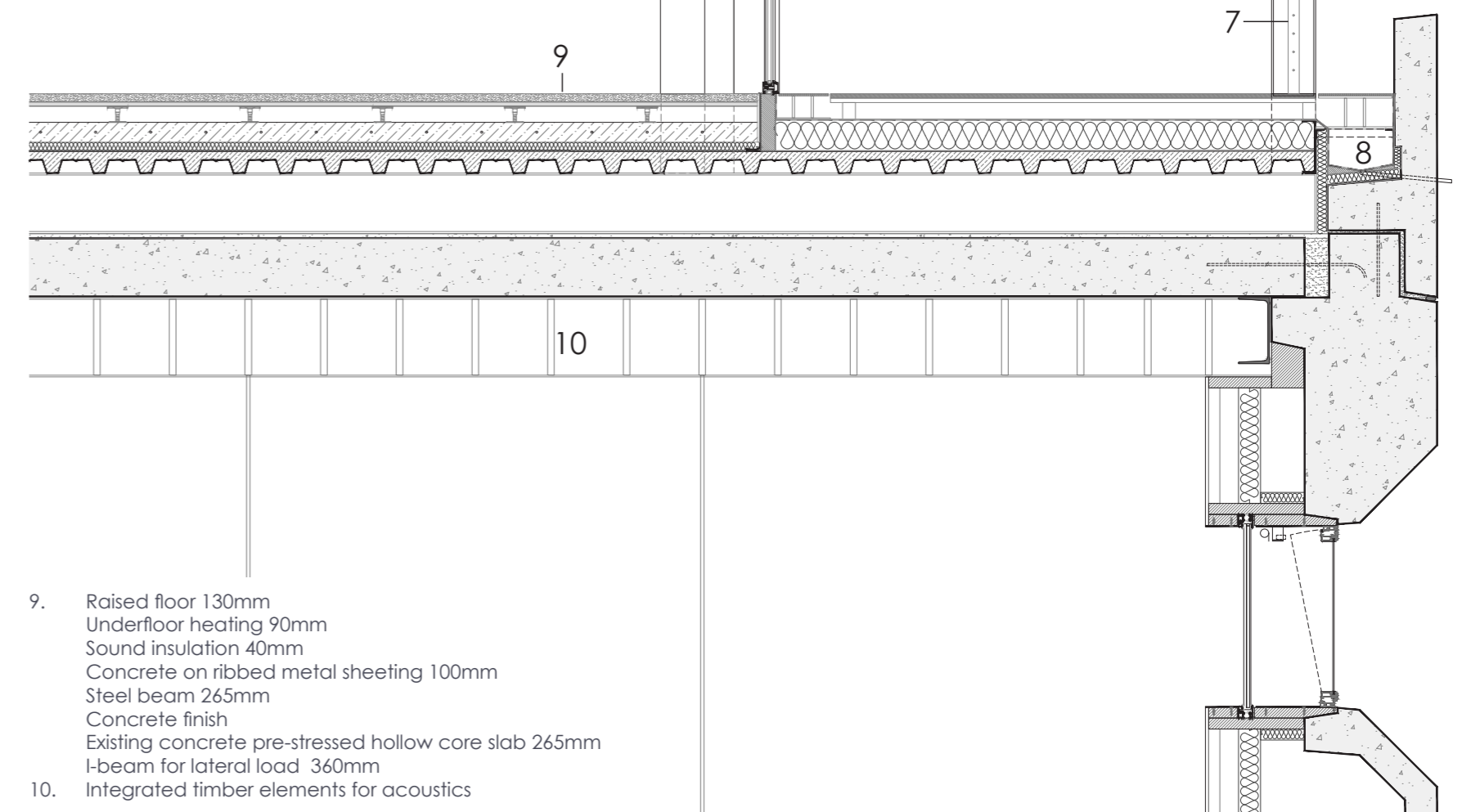
Fourth level



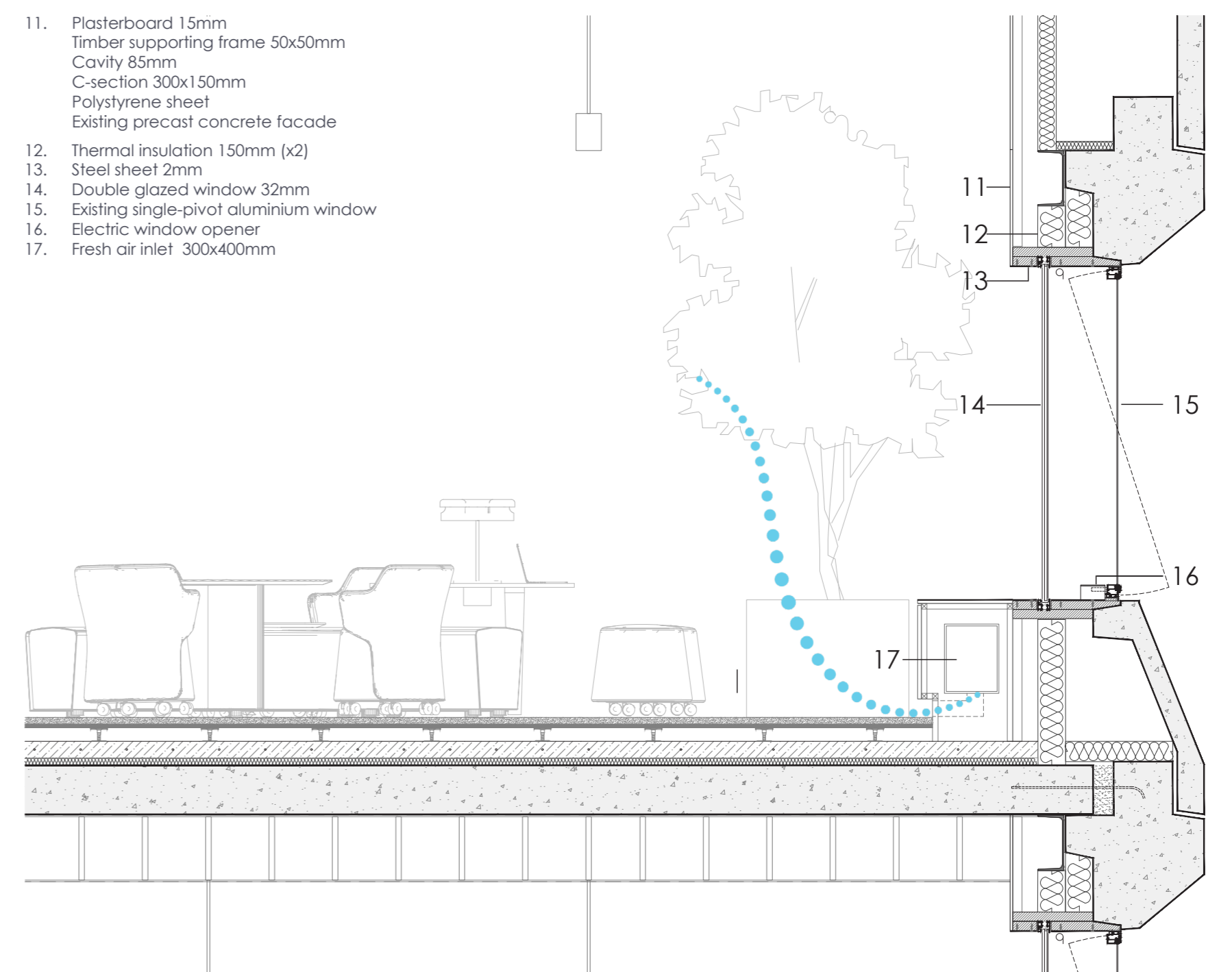
Ground floor



1. Roof insulation 200mm
2. I-beam 400x180mm
3. Steel circular column - 200mm
4. Steel beam, connected to main structure 180x90mm
5. Steel column - louvre support 100x200mm
6. Timber louvre 300x150x2600mm
7. Balustrade 1000mm
8. Gutter



9. Raised floor 130mm
Underfloor heating 90mm
Sound insulation 40mm
Concrete on ribbed metal sheeting 100mm
Steel beam 265mm
Concrete finish
Existing concrete pre-stressed hollow core slab 265mm
I-beam for lateral load 360mm
10. Integrated timber elements for acoustics



11. Plasterboard 15mm
Timber supporting frame 50x50mm
Cavity 85mm
C-section 300x150mm
Polystyrene sheet
Existing precast concrete facade
12. Thermal insulation 150mm (x2)
13. Steel sheet 2mm
14. Double glazed window 32mm
15. Existing single-pivot aluminium window
16. Electric window opener
17. Fresh air inlet 300x400mm

