

project book
the right to the city [library]

julia van der ploeg
interiors buildings cities

project book
the right to the city [library]

julia van der ploeg
interiors buildings cities
msc3/4 palace
4573560

the project	an overview	4
research	Stockholm city library	5
	precedent study	8
	a room for a library	9
	site	12
concept	the hallway	13
	the stairs	14
	the observatory	15
context	site	16
the design	program	19
	floor plans	20
impressions	observatory entrance	25
	the stairs	26
	the hallway	27
the design	the reading room	28
model photography	the reading room	34
the stairs	an overview	42
	Asplund	43
	Stockholm	46
	section	48
the facade	elevation	50
	the elements	54
building technology	section	55
	detail	57
	climate strategy	63
	sun shading	64
	construction	67
figure references		68
colophon		71

The Right to the City [Library], aims to extend the historic Stockholm Public Library, designed by Gunnar Asplund, to meet modern needs while respecting its heritage. The library, completed in 1927, faces challenges from digitization and the evolving role of libraries. The proposed extension addresses these issues by creating a welcoming, accessible space that honors the original design while integrating new, versatile areas.

The Stockholm Public Library, located in the Vasastaden neighborhood, is an iconic building designed by Gunnar Asplund. It was the first public library in Stockholm, based on American models where visitors could search and take books from the open stacks themselves. The library is a significant cultural landmark and attracts visitors for its unique atmosphere and architectural features, such as the rotunda.

The library's current design no longer meets the spatial demands of contemporary society. There is a need for the library to transform into a more versatile and expectation-free environment that accommodates the growing digitization of information and diverse community needs.

Extensive research into Asplund's works and modern library precedents informed the design approach. The aim is to create a space open to all, to promote inclusivity and intellectual development. The design seeks to make the library more approachable by restoring its relation to the city, thereby countering the imposing and monumental character of the original building. A building where everyone can participate as a creator of "the city", an idea introduced by Henri Lefebvre in his book 'The Right to the City'.

The design process involved several iterations, focusing on maintaining a subtle connection with the existing library while adding new functional spaces. The final design proposal includes three key components: the hallway, a set of stairs, and the observatory.

The hallway

The hallway serves as a transition and circulation space, linking the different parts of the library.

The stairs

An intricate set of interior and exterior stairs accommodates visitors, enhancing the connection between the library, observatory, and hill. The design of the staircases integrates the new addition with Asplund's design and connects it to the city of Stockholm.

The observatory

The observatory provides additional space for the library and mediates between the rotunda and the hill. The reading room at the top is a key feature of this addition. It is designed to contrast with the imposing rotunda of the original library. Unlike the rotunda, which is introspective and grand, the proposed reading room aims to be more intimate and connected to its surroundings. It opens up the view at eyelevel as an interior extension of the observatory hill. The design emphasizes creating a domestic and inviting atmosphere; urban elements are introduced in the interiors to embody the idea that everyone has the right to be part of the temporary community inhabiting the library.

The extension expands the library's usable floor area by 6630m². A proposal for an increase in educational and group study spaces. The proposition also includes an auditorium, a generous café, and back-of-house facilities. The observatory hosts reading rooms with views, fostering a more inviting and accessible atmosphere compared to the formal reading spaces of the original library.

The proposed extension blends seamlessly with Asplund's original design while addressing modern needs. It honors the historical value of the existing library, provides a more inclusive and versatile environment, and enhances the overall coherence of the site. The use of local materials, such as granite and ceramic, ensures durability and aesthetic harmony with the original building.

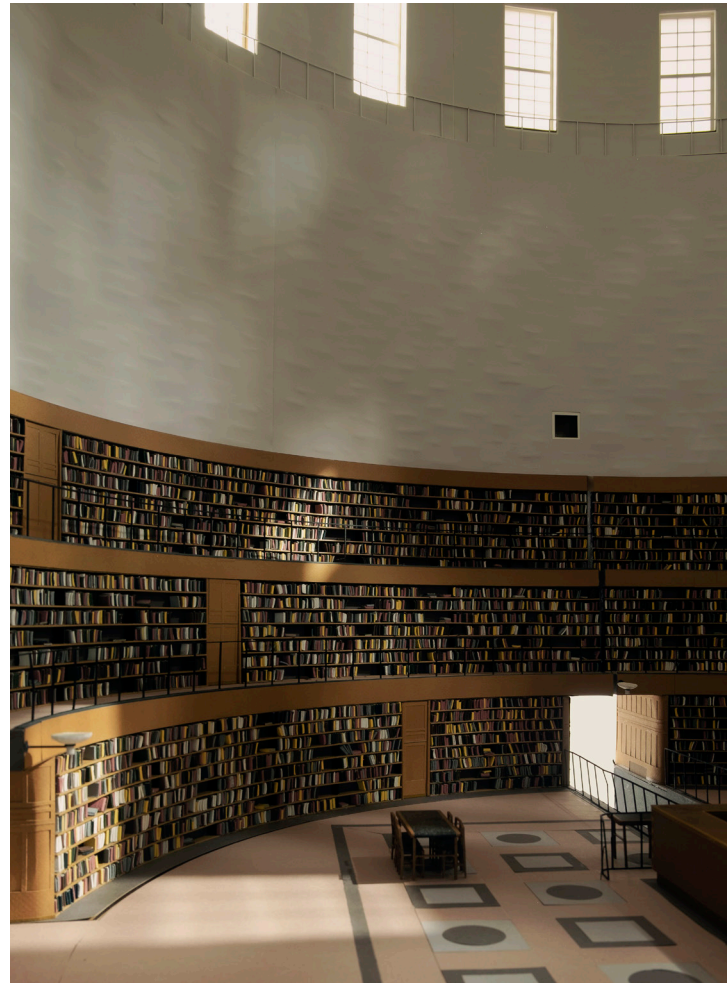


Fig. 1. 1:25 model



Fig. 2. 1:25 model



Fig. 3. 1:25 model

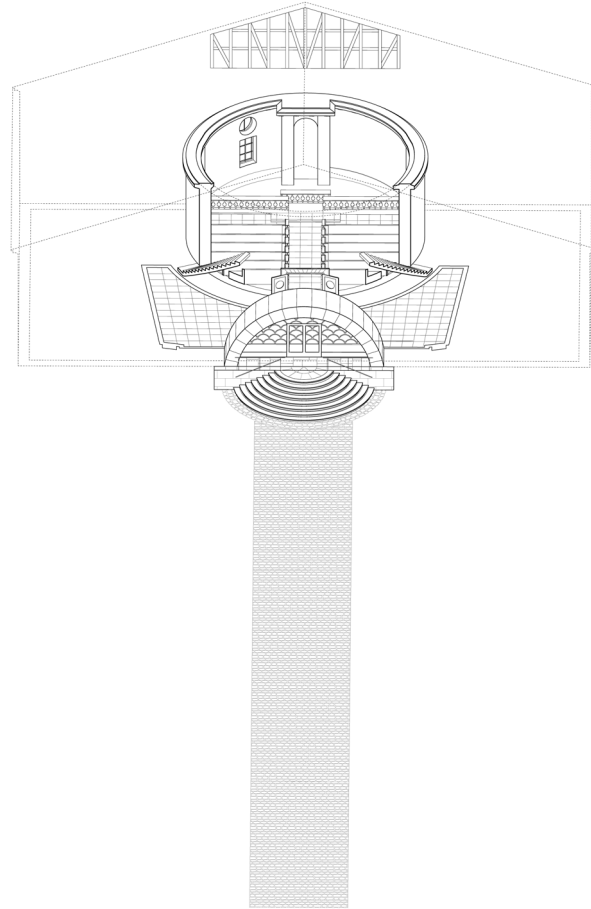


Fig. 4. Lister county courthouse analysis



Fig. 5. 1:25 model



Fig. 6. 1:25 model



Fig. 7. 1:25 model

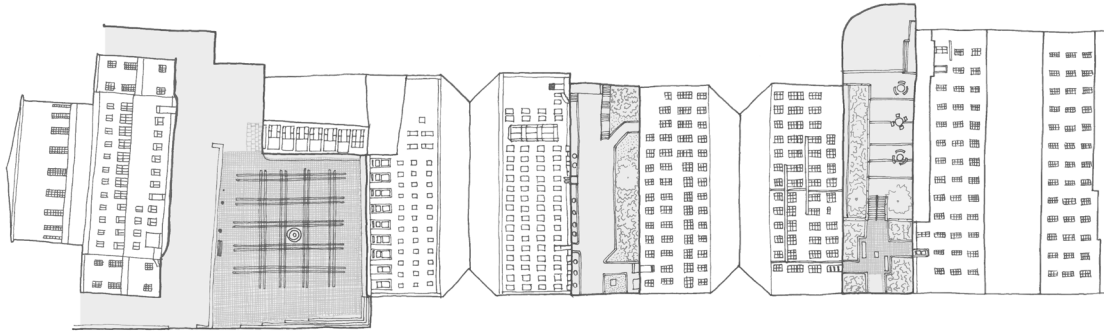


Fig. 8. the unfolded facades of the library



Fig. 9. the hallway

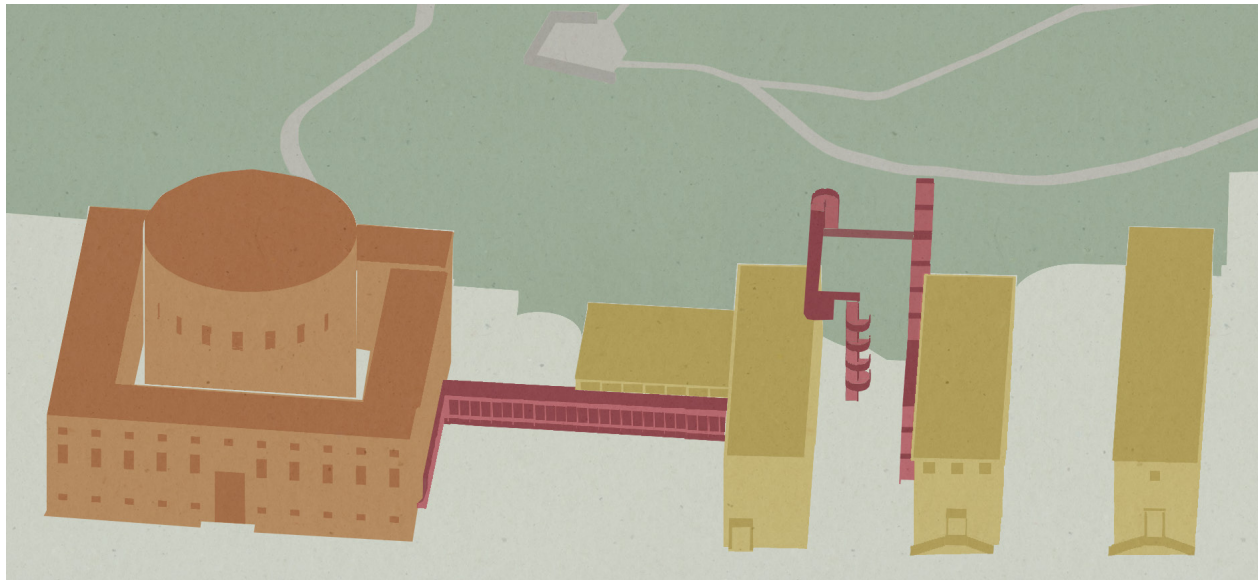


Fig. 10. the stairs



Fig. 11. the observatory



Fig. 12. site plan





Fig. 13. site plan



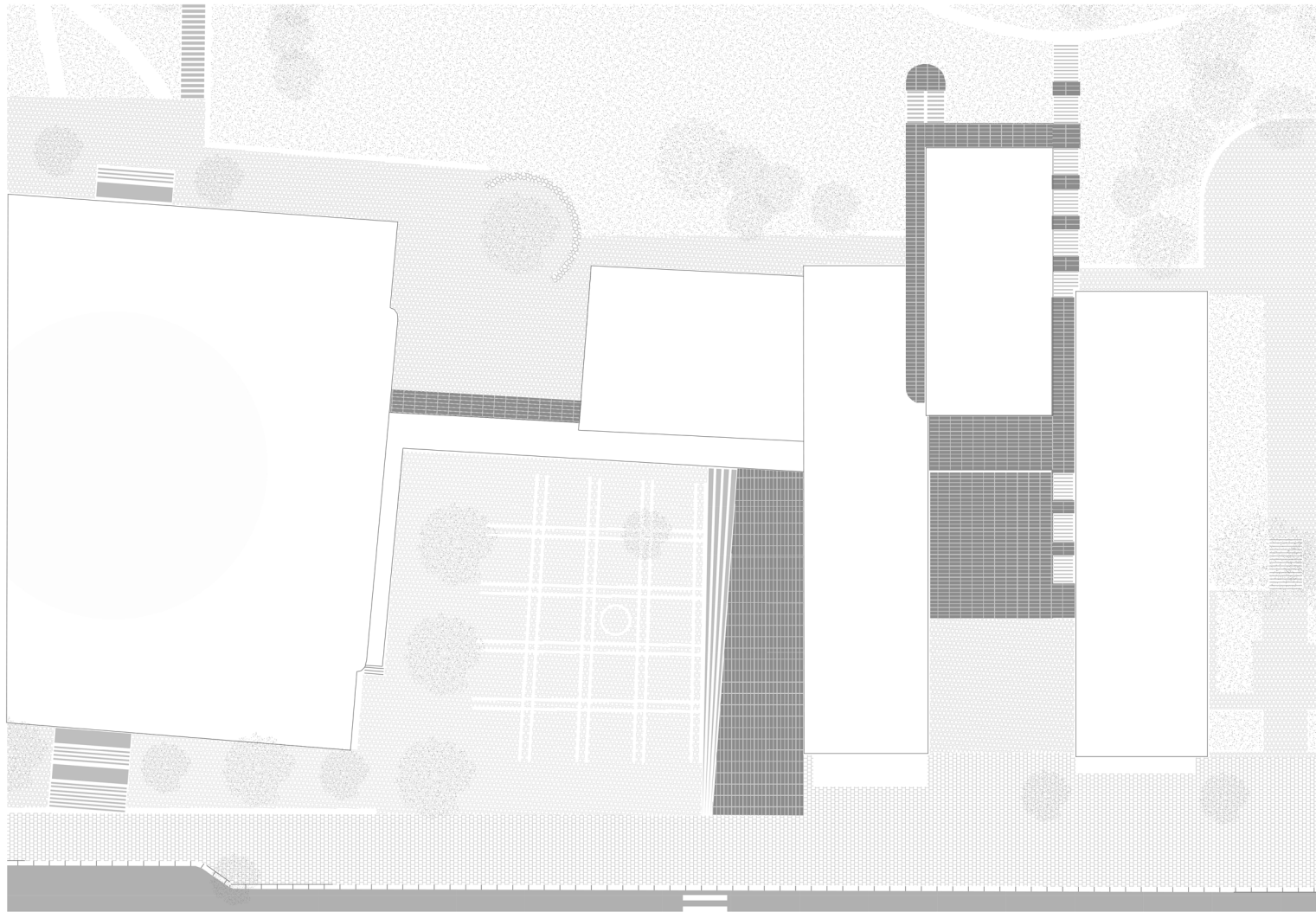


Fig. 14. granite plinth surrounding the building



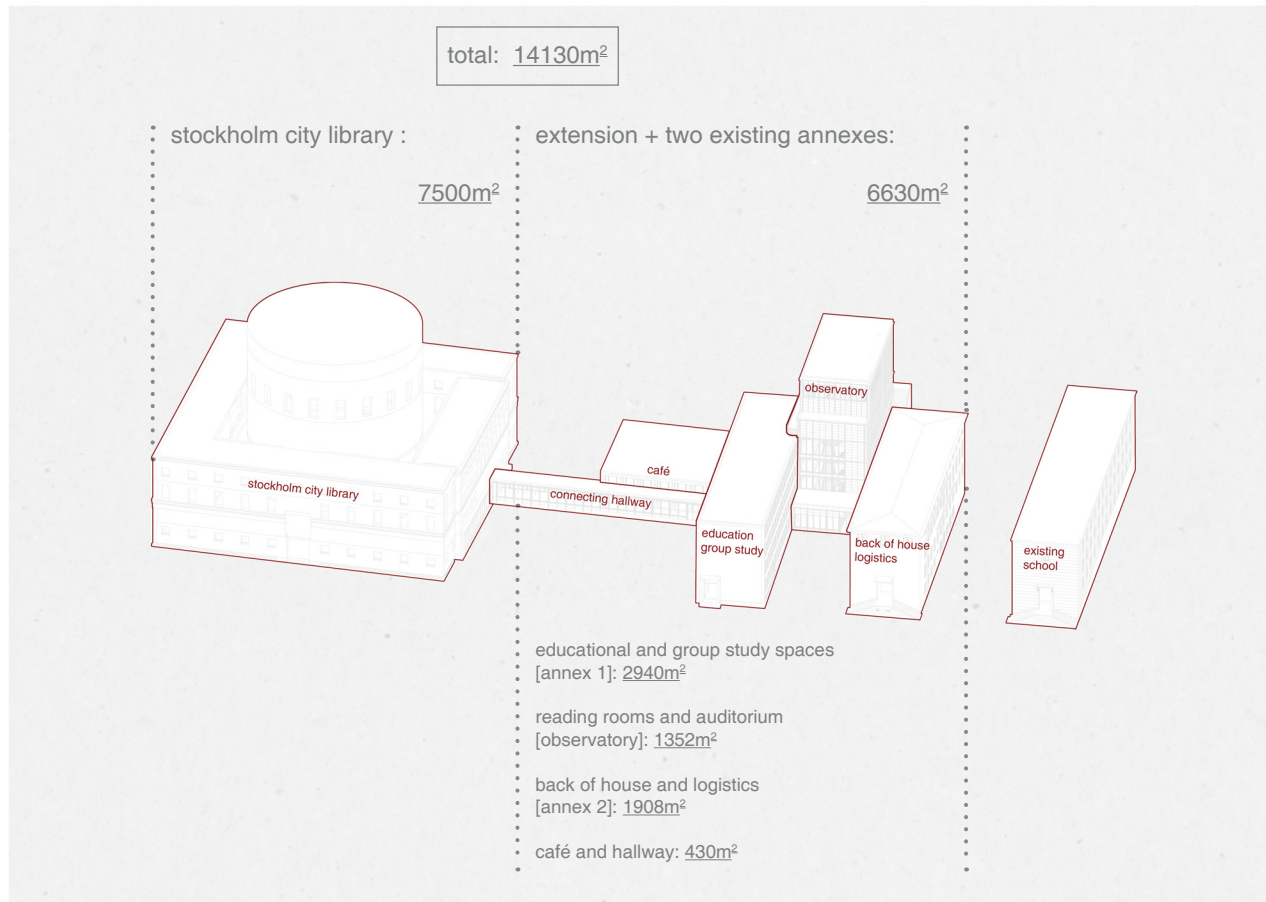


Fig. 15. program and allocated squared metres

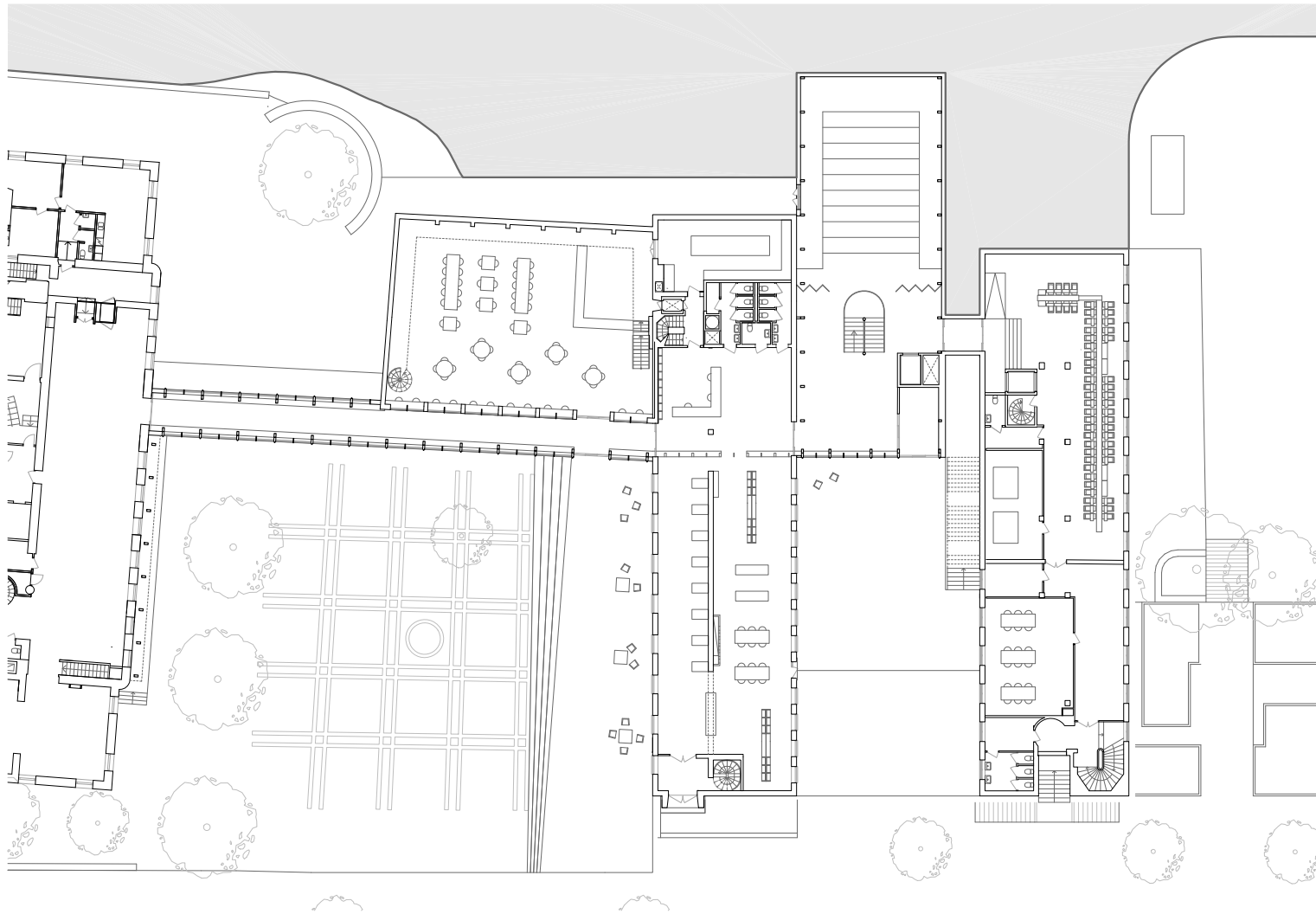


Fig. 16. ground floor plan



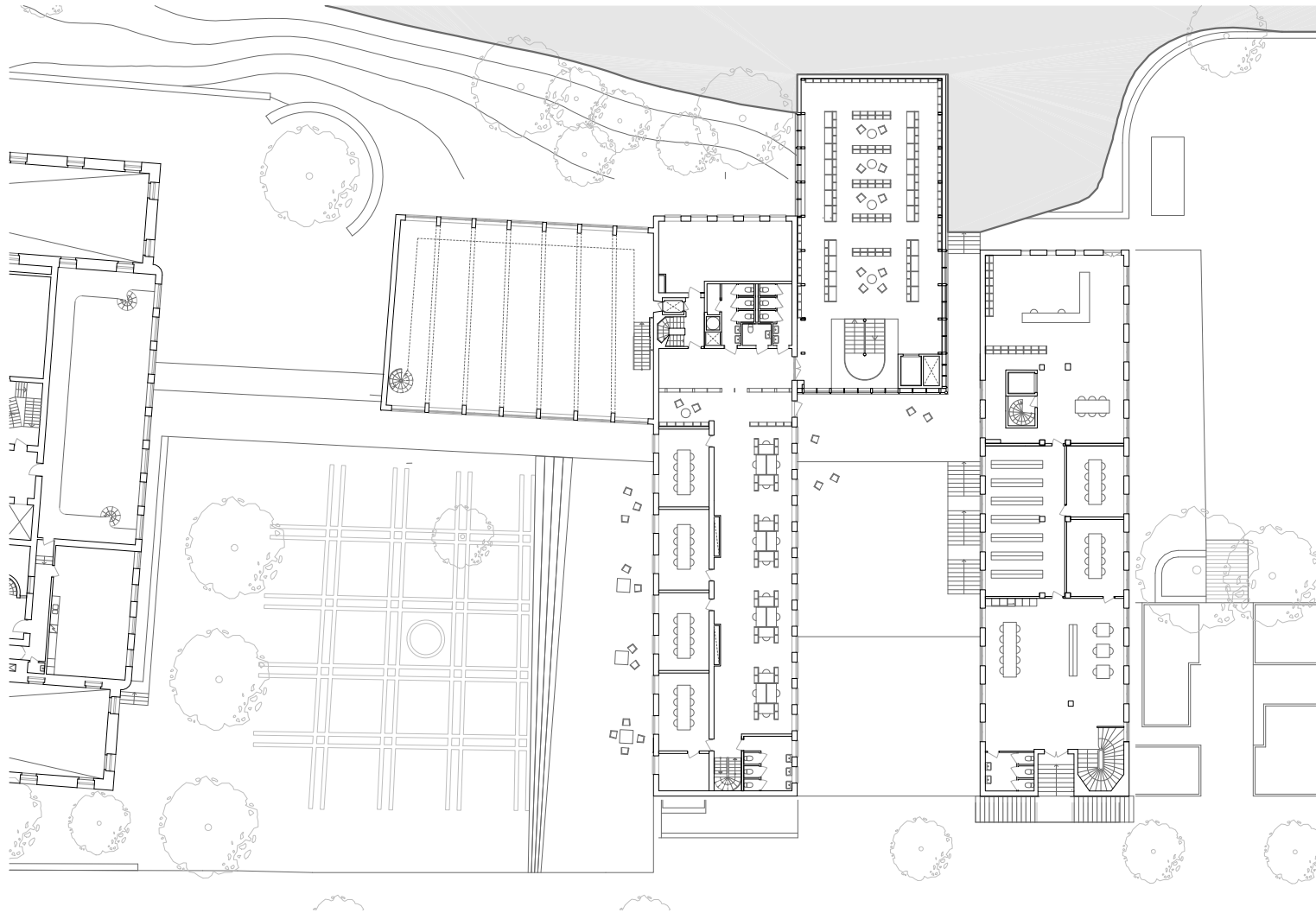


Fig. 17. first floor plan



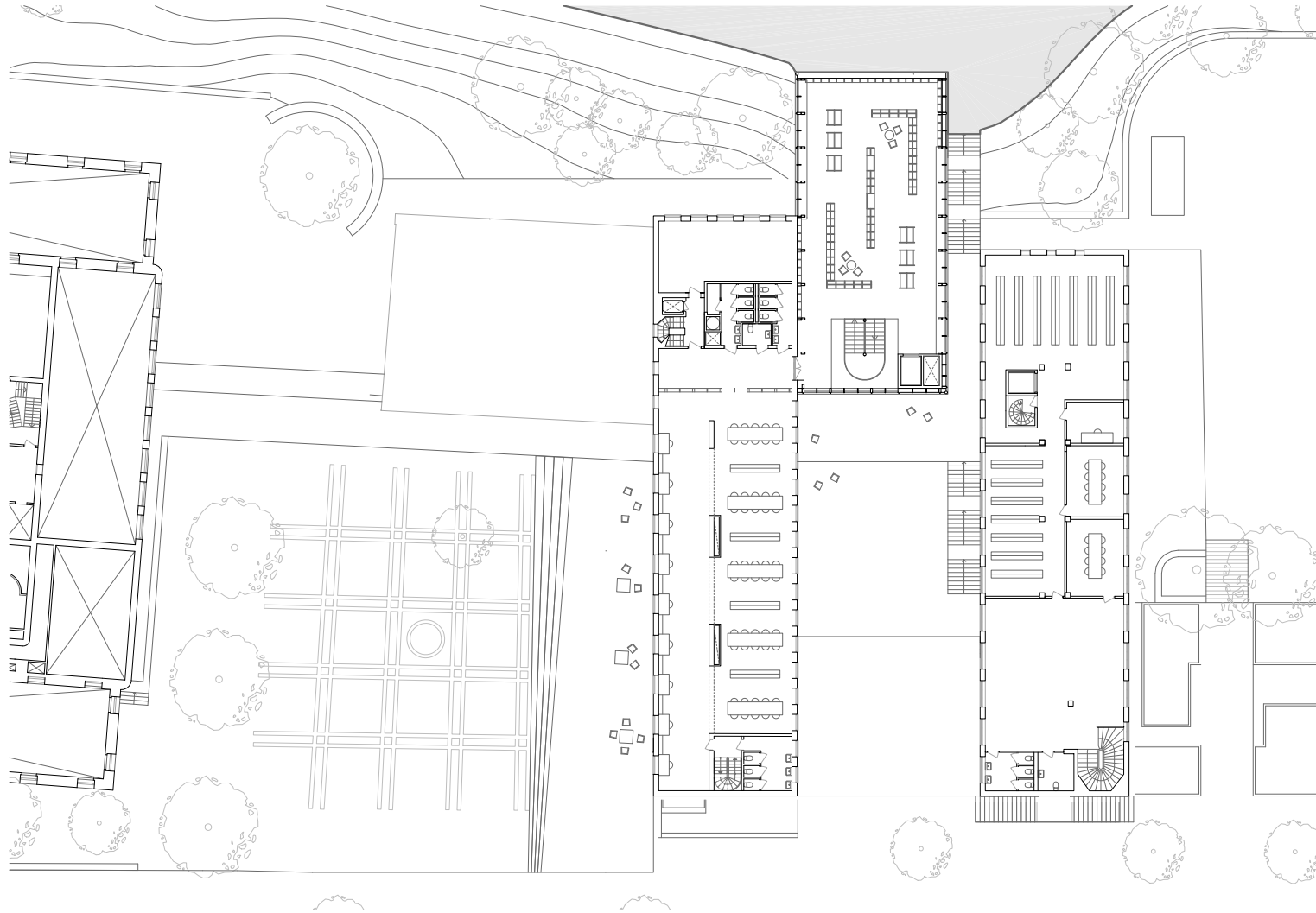
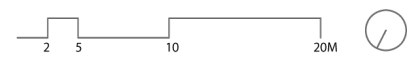


Fig. 18. second floor plan



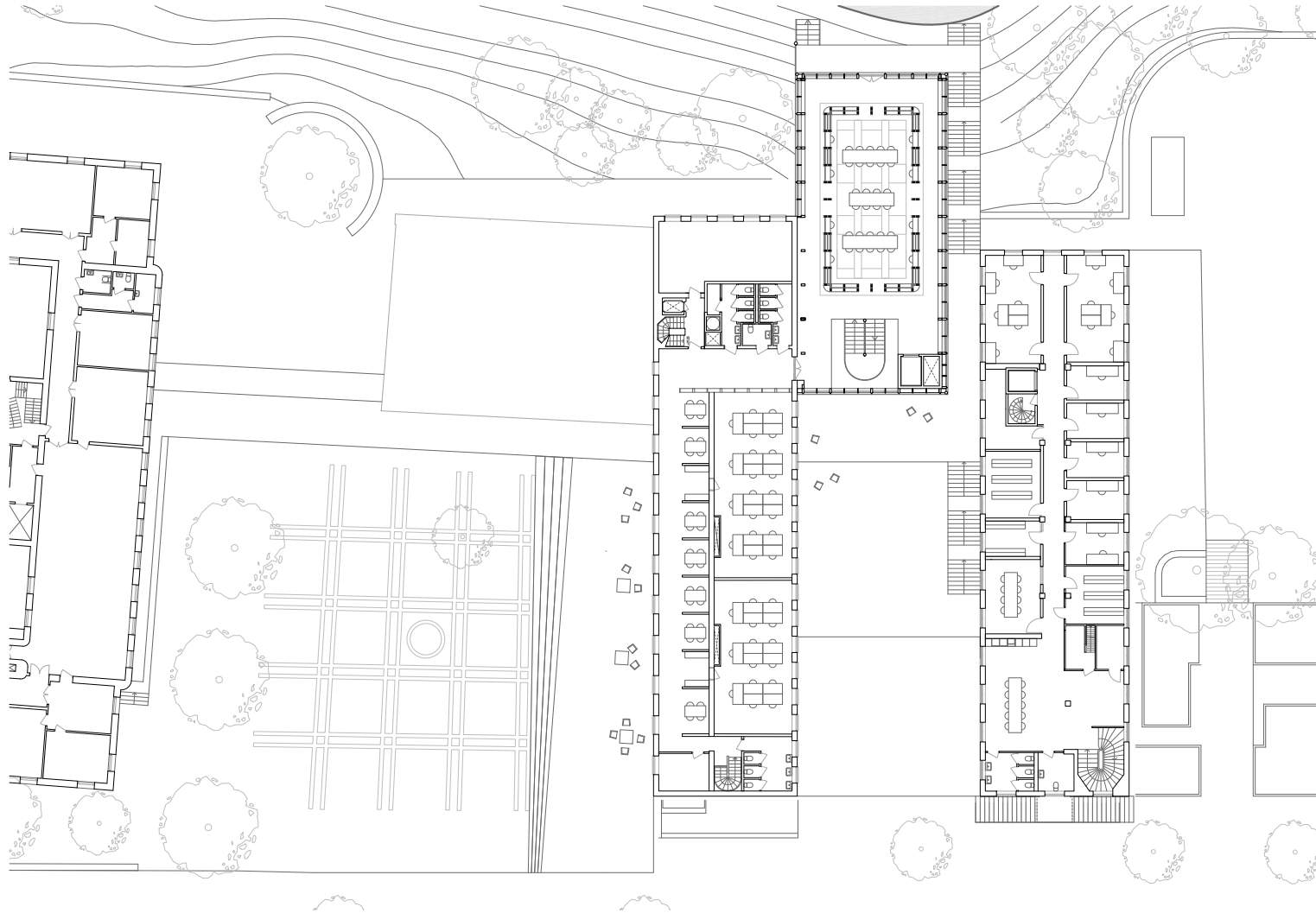


Fig. 19. third floor plan



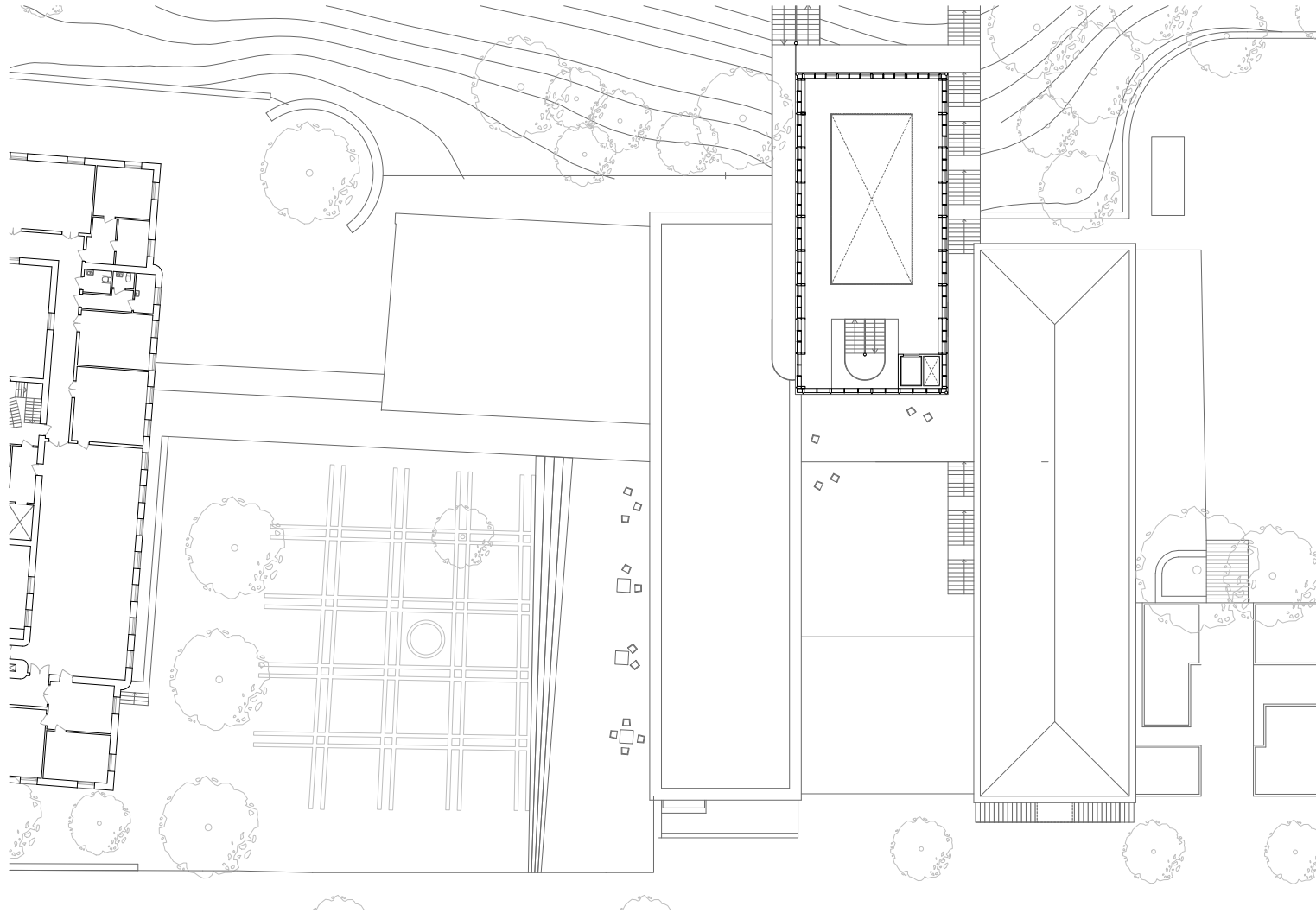


Fig. 20. third floor mezzanine plan





Fig. 21. entrance to the observatory between the annexes



Fig. 22. climbing the stairs next to the facade



Fig. 23. the hallway connecting the library to the observatory

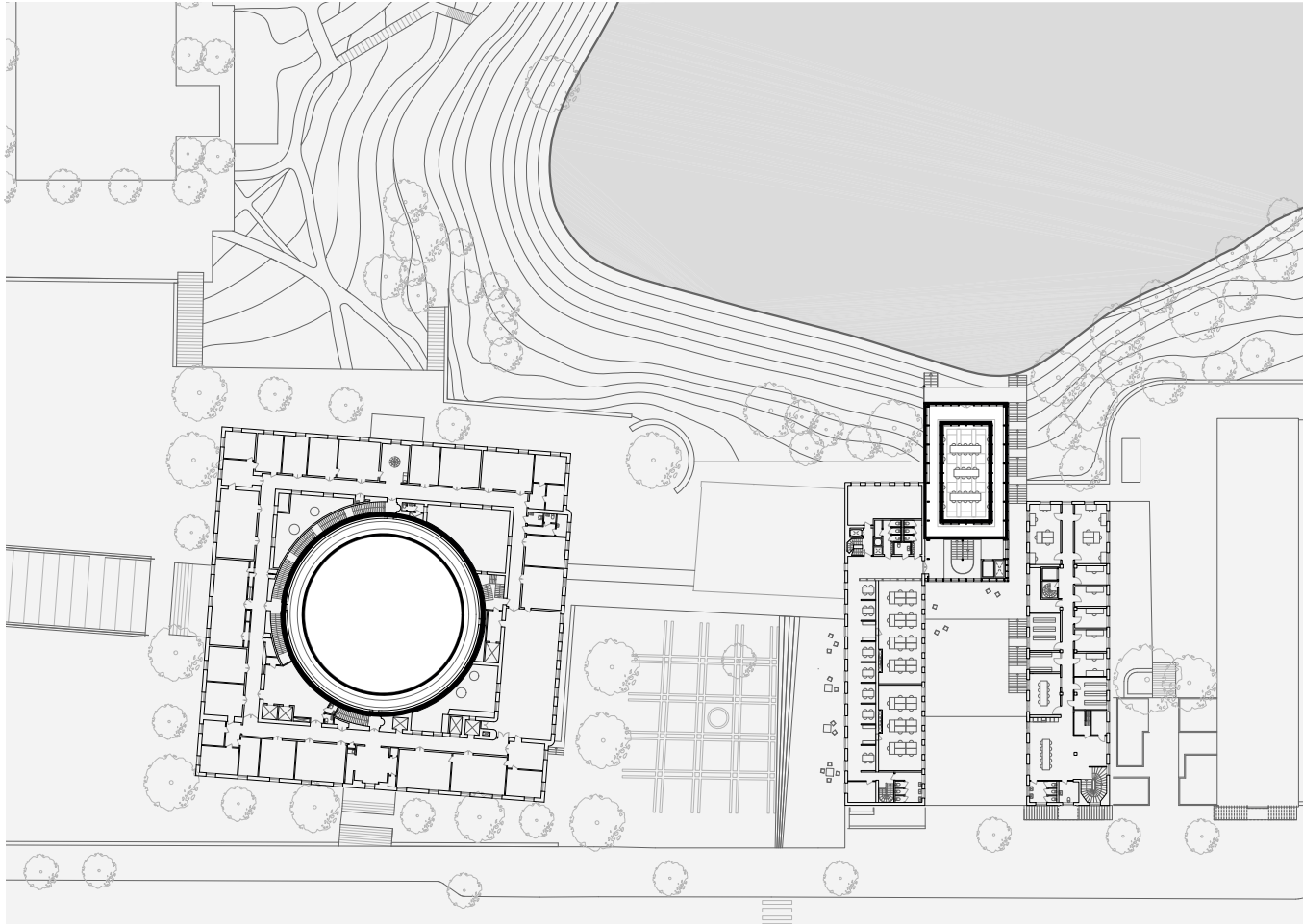


Fig. 24. the reading room versus the rotunda



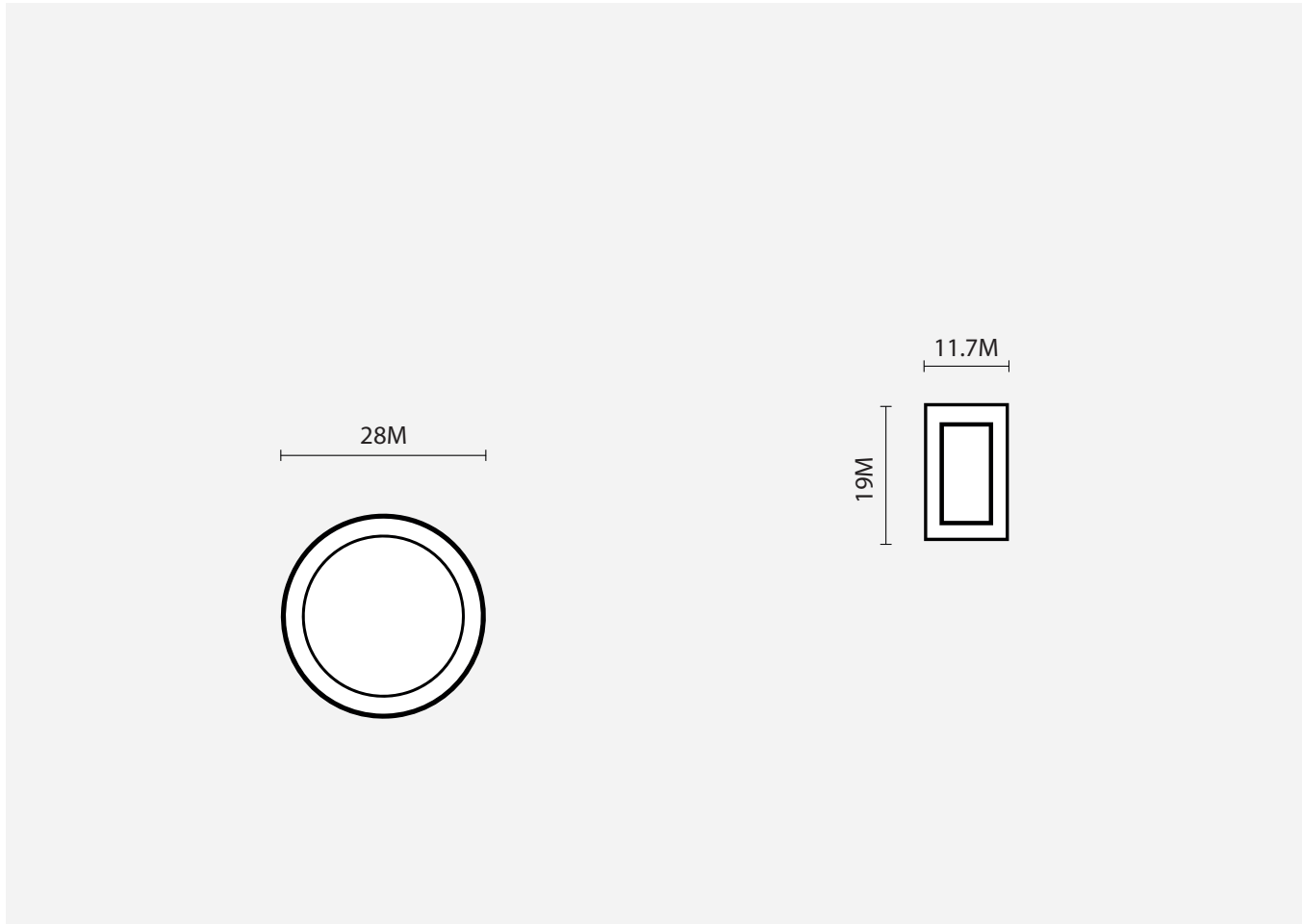


Fig. 25. the reading room versus the rotunda



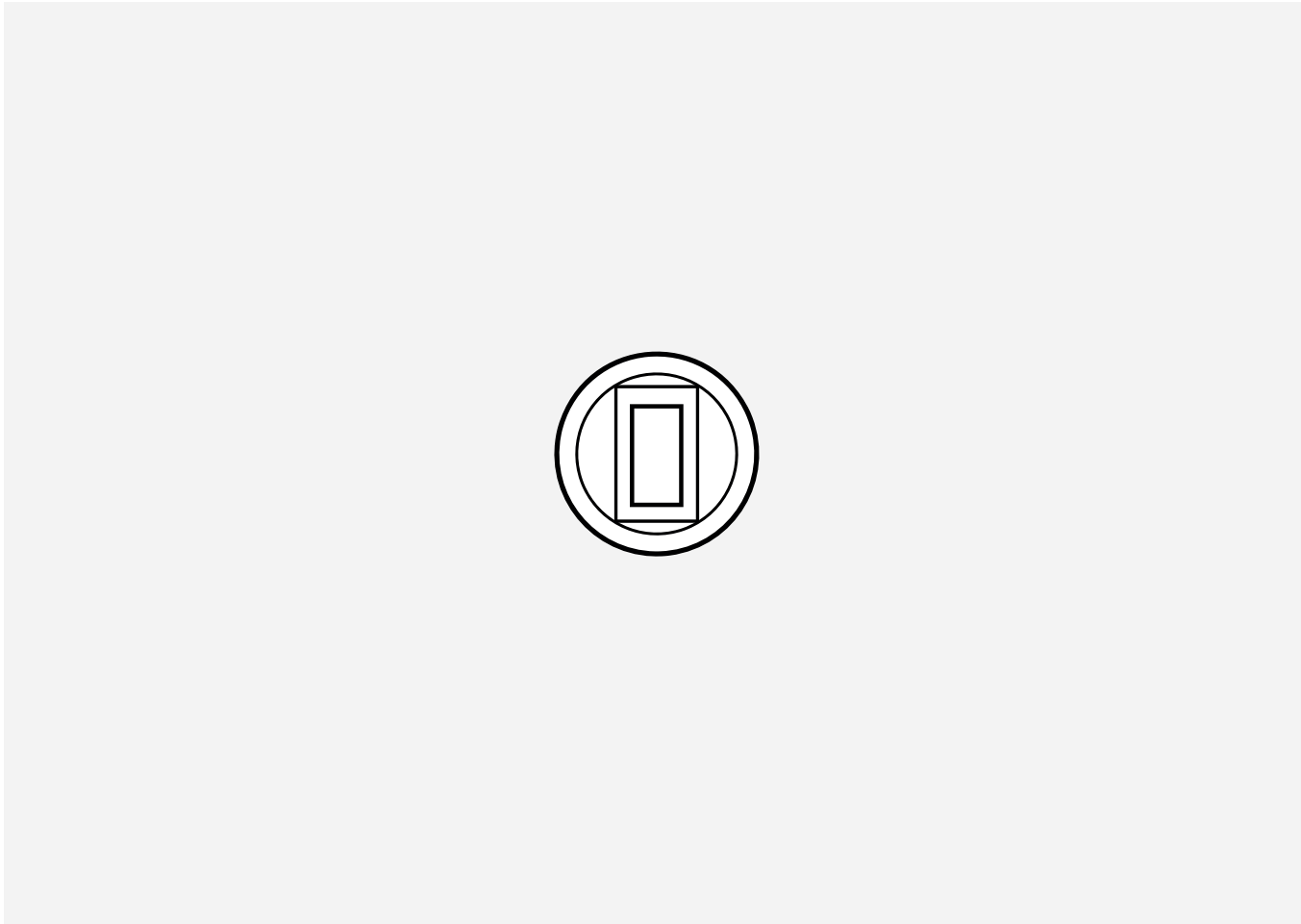


Fig. 26. the reading room versus the rotunda



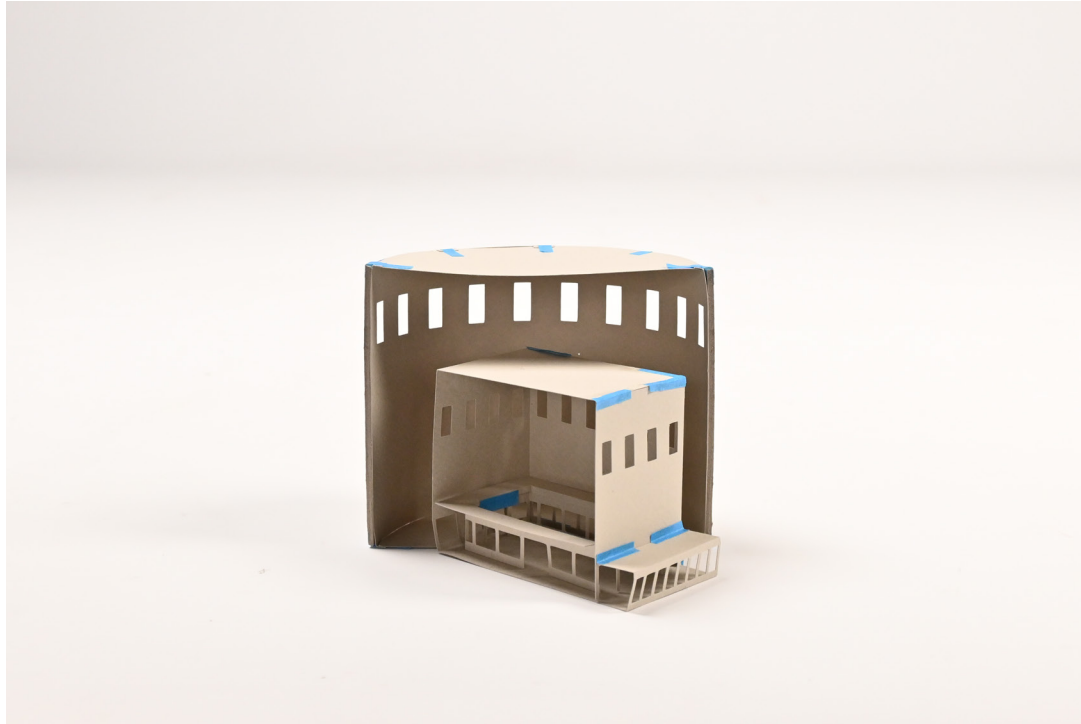


Fig. 27. the reading room in the rotunda

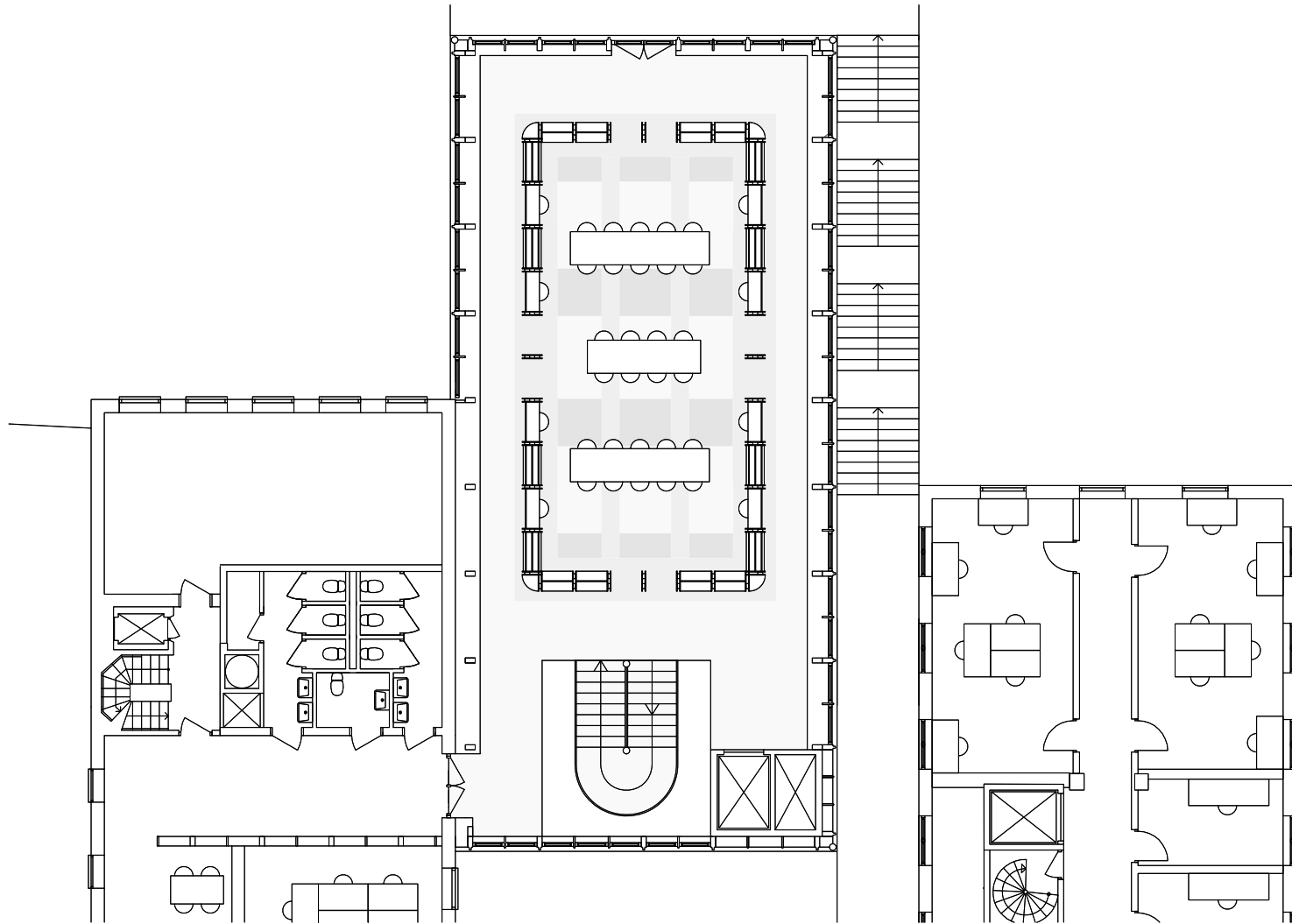


Fig. 28. the reading room floor plan



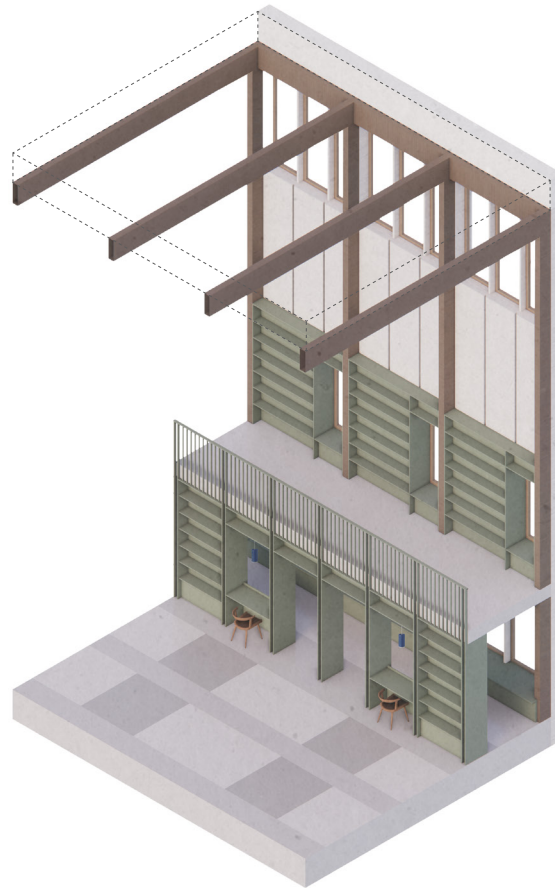


Fig. 29. interior impression of the reading room



Fig. 30. the model as an object



Fig. 31. section of the observatory reading room



Fig. 32. the entrance to the inner court



Fig. 33. the built-in furniture



Fig. 34. a reading spot in the inner court



Fig. 35. the ambulatory



Fig. 36. a seat in the window on the mezzanine



Fig. 37. the mezzanine

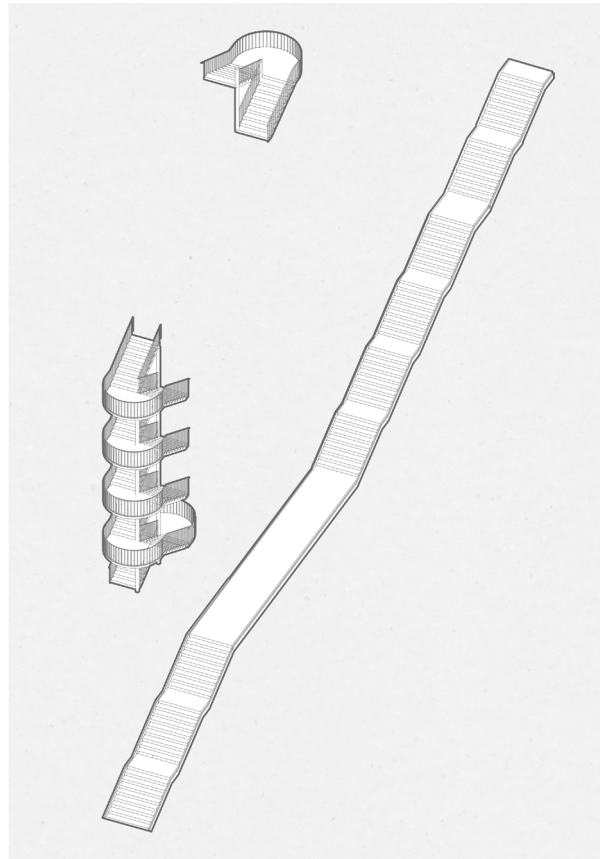


Fig. 38. the set of stairs

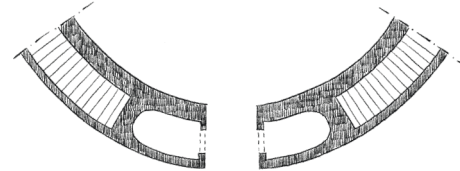
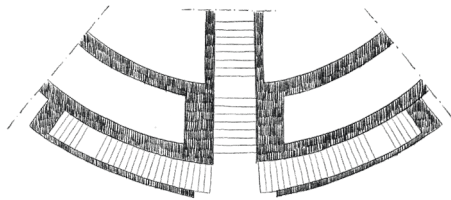
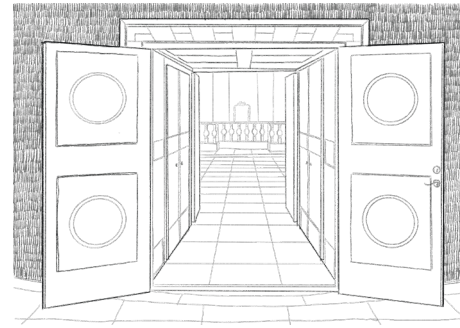
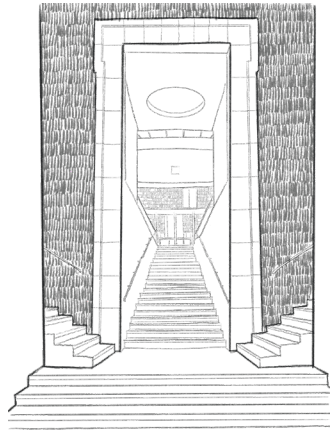


Fig. 39. Stockholm city library

Fig. 40. Lister county courthouse

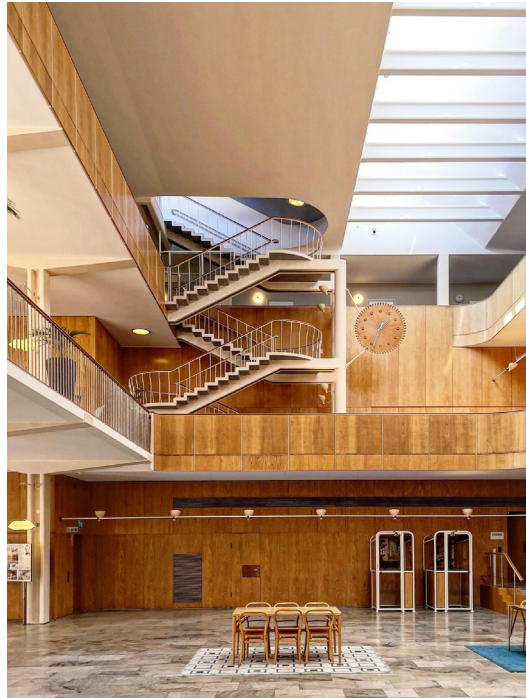


Fig. 41. Gothenburg city hall

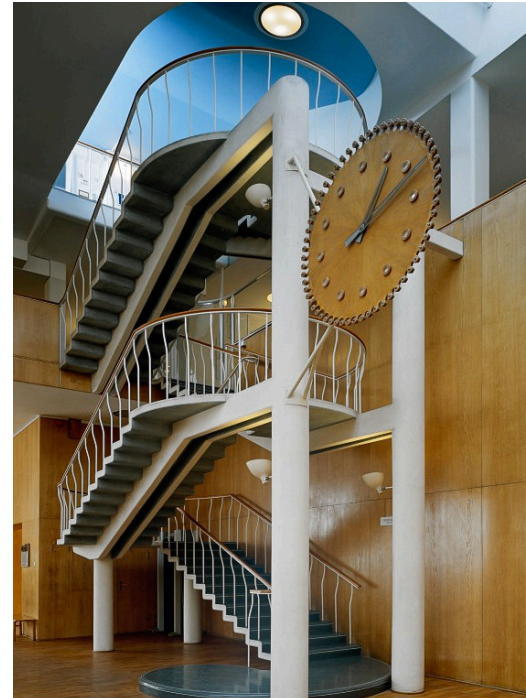


Fig. 42. staircase in the main hall

“When we progress further through the doorway under the cupola we find a Jacob’s ladder in the light against us leading up to the plateau of the crematorium (Fig. 111). Here is a clear monumental idea: this staircase with its terraces of graves in the outside air: you really wish you were on your own with an open view, not blocked by the backs of other visitors. The original idea with the rising terraces and the increasing gradient of the staircase augmented one’s expectations. Up at the top on the magnificent plateau one is rewarded with wide views over the roofs like a fairytale city. The building before you has fine proportions and massing but is not entirely convincing as a termination. How would it have been without a building at all, but with the open sky beyond the staircase?”

Asplund, E.G. (1923). Pictures with Marginal Notes from the Gothenburg Art and Industry Exhibition. *Byggmästaren*. p. 273-8, translated by Eva Berndtsson and Peter Blundell Jones in 2002.



Fig. 43. Up to the Final Stairs of Lewerentz’s Crematorium Room.



Fig. 44. Söderbergs trappor



Fig. 45. stairs in Södermalm

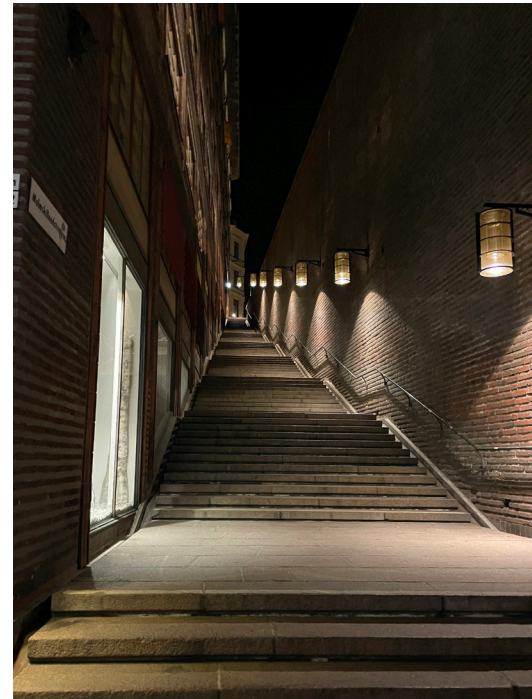


Fig. 46. the studio walking the Malmkillnadstrappan

Fig. 47. Malmkillnadstrappan at night

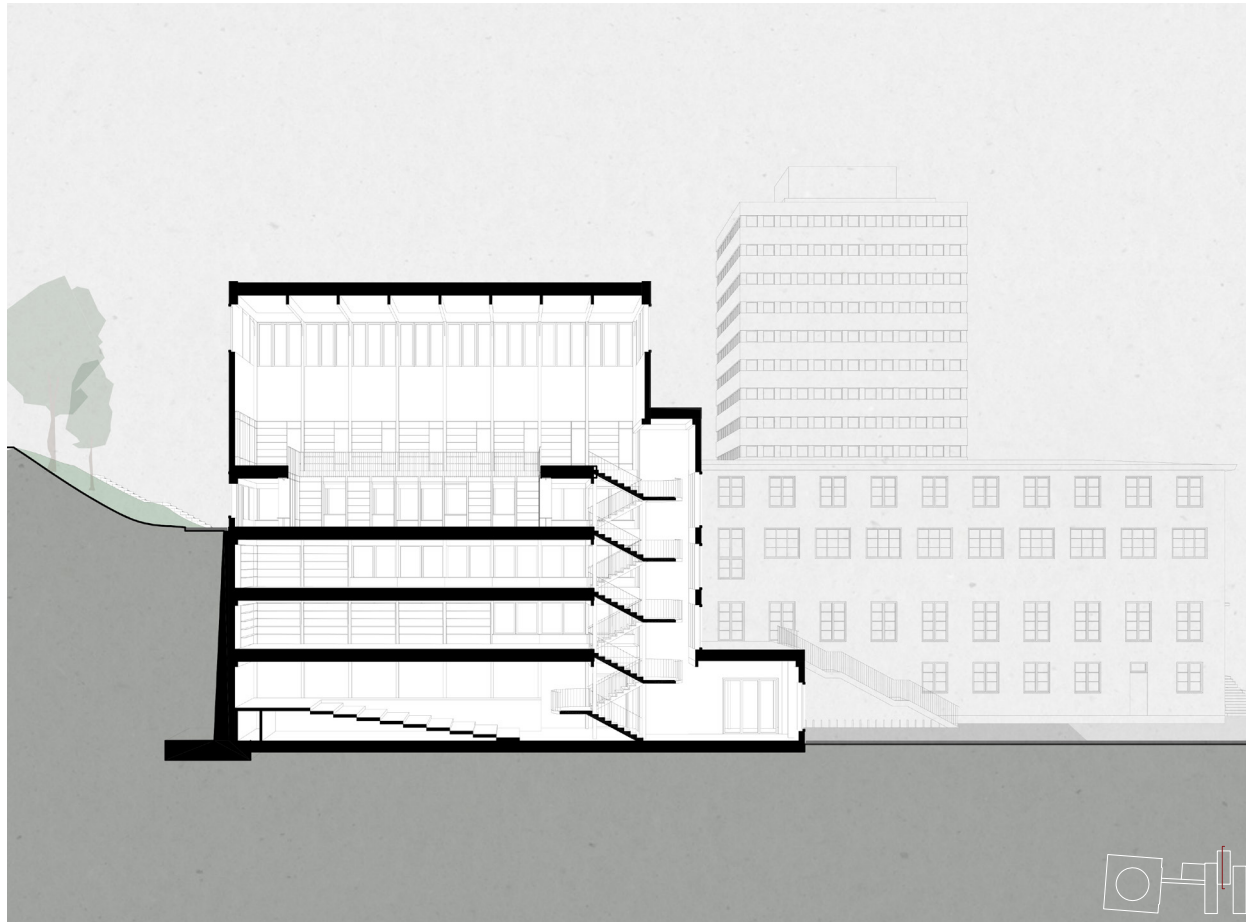
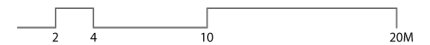


Fig. 48. section through the observatory



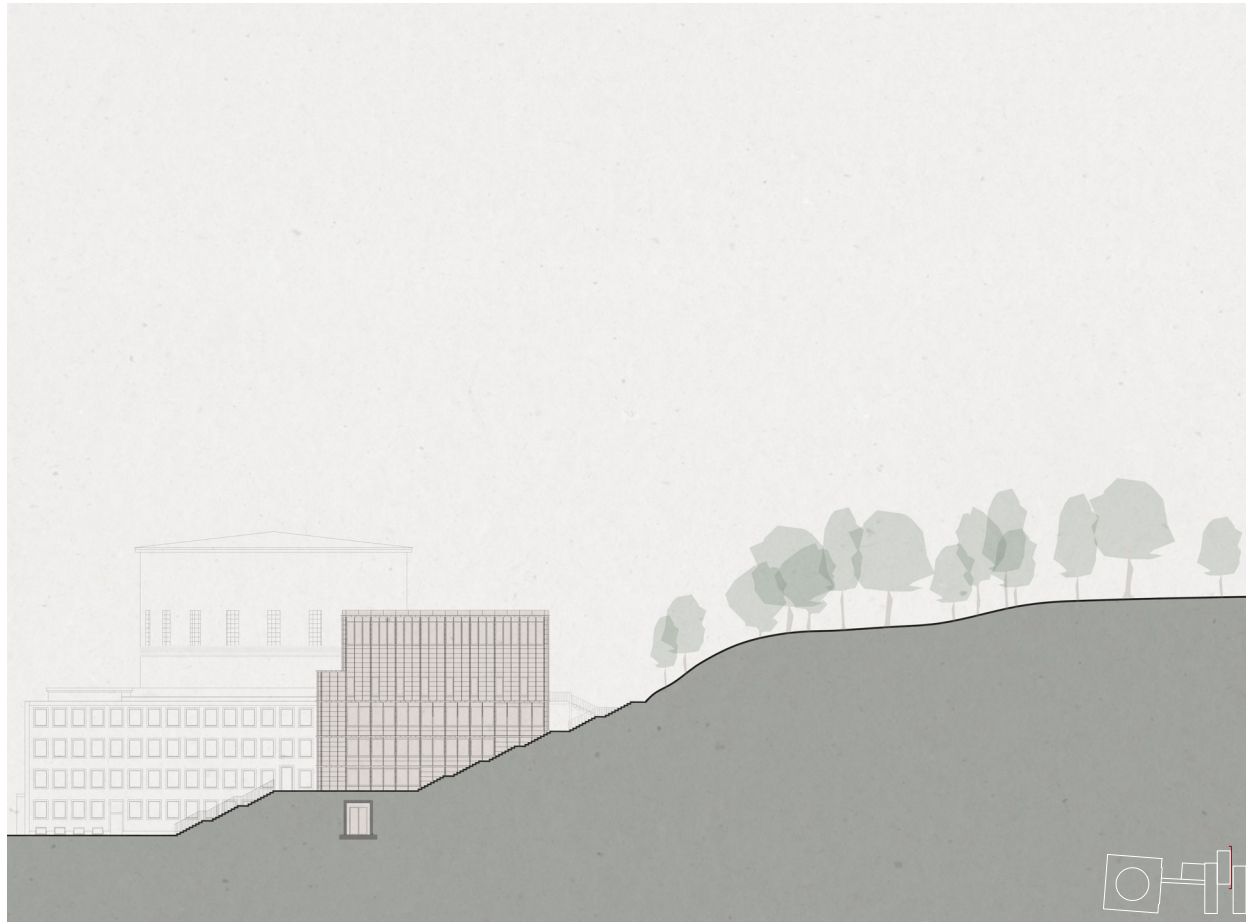


Fig. 49. section through the stairs leading up the observatory hill



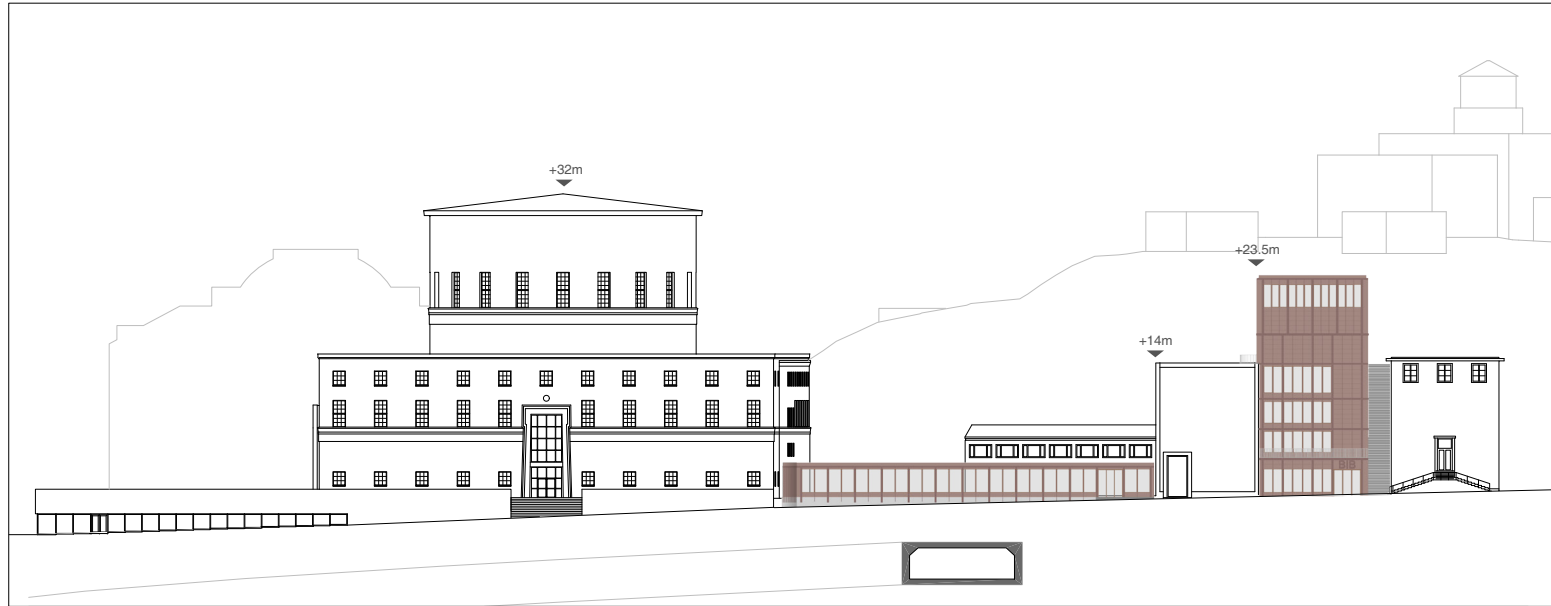


Fig. 50. north elevation from Odengatan



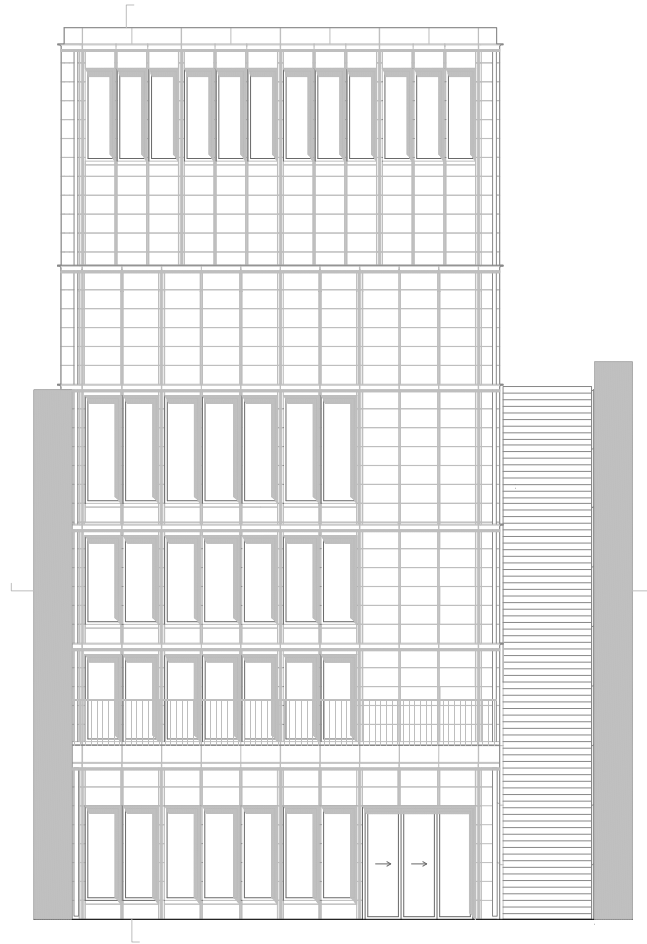


Fig. 51. north facade elevation



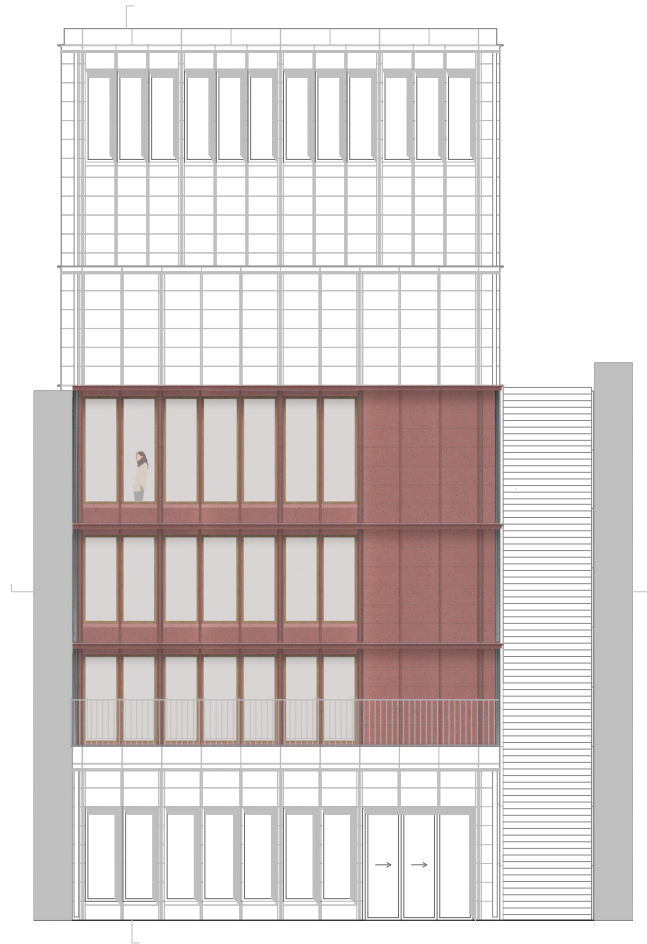


Fig. 52. north facade elevation materialisation





Fig. 53. ceramic facade



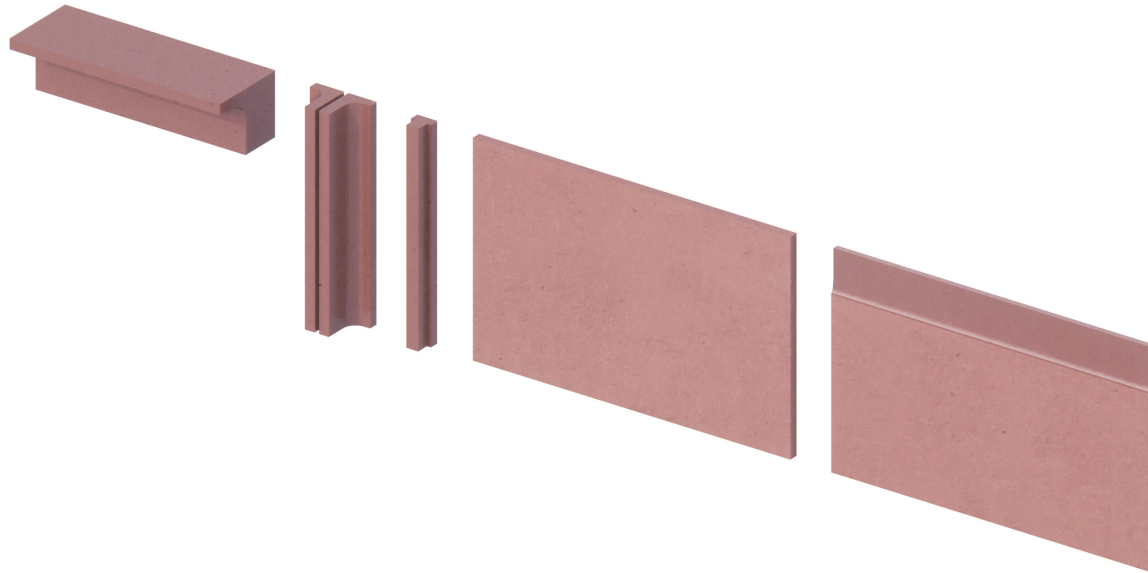


Fig. 54. ceramic facade elements

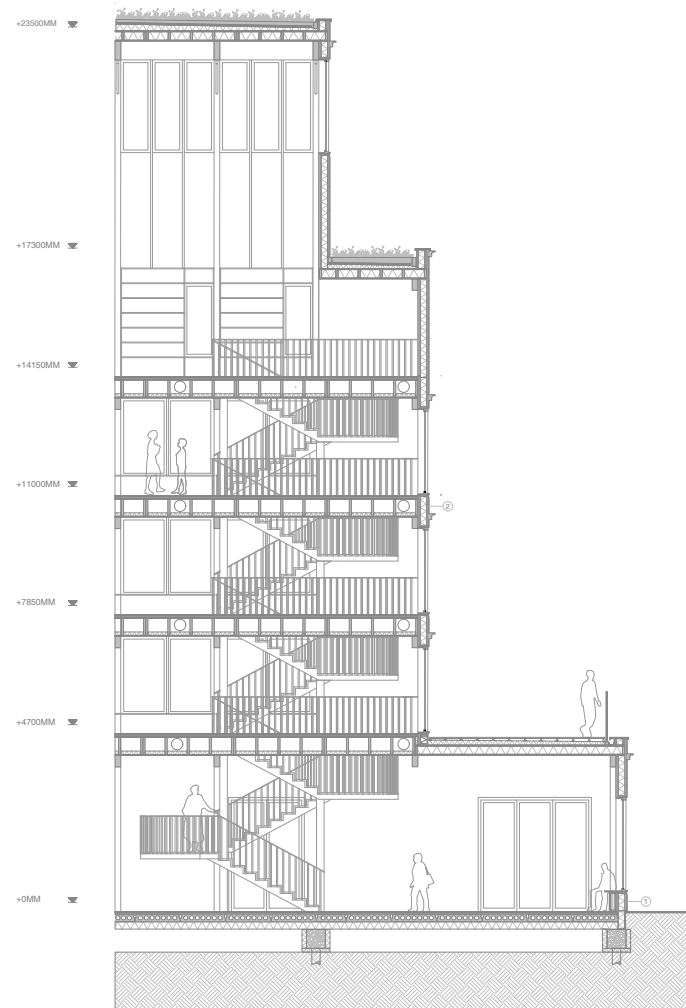


Fig. 55. technical section through the observatory



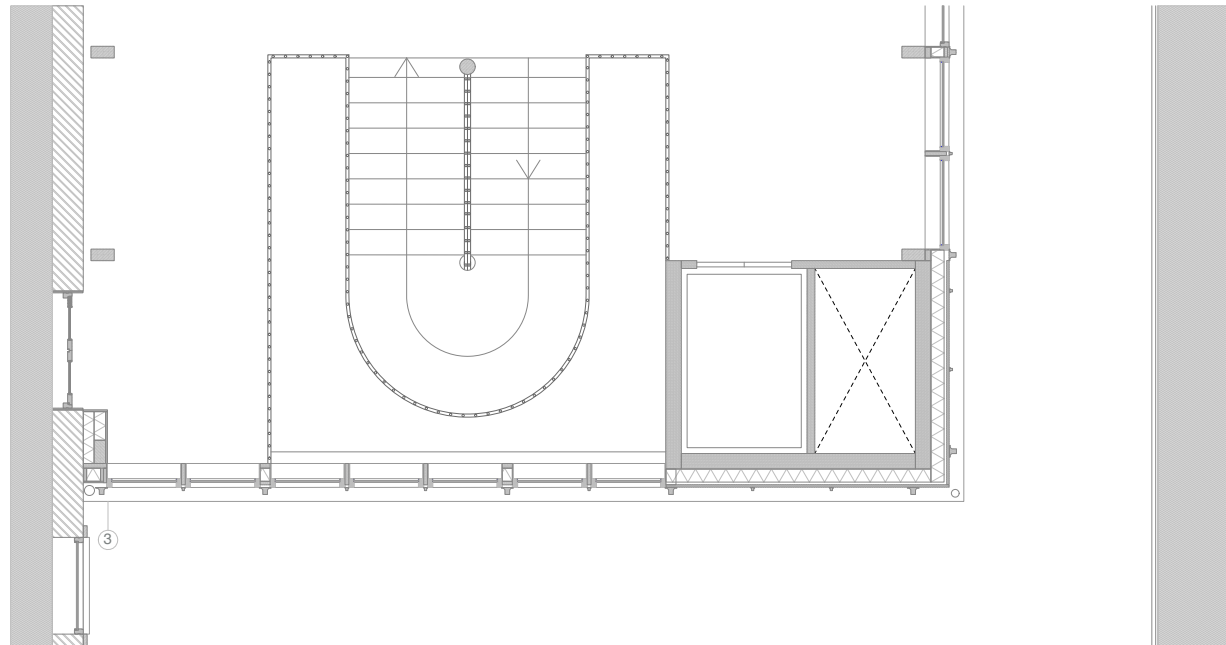
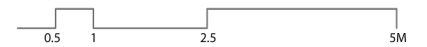


Fig. 56. observatory meeting the existing annex



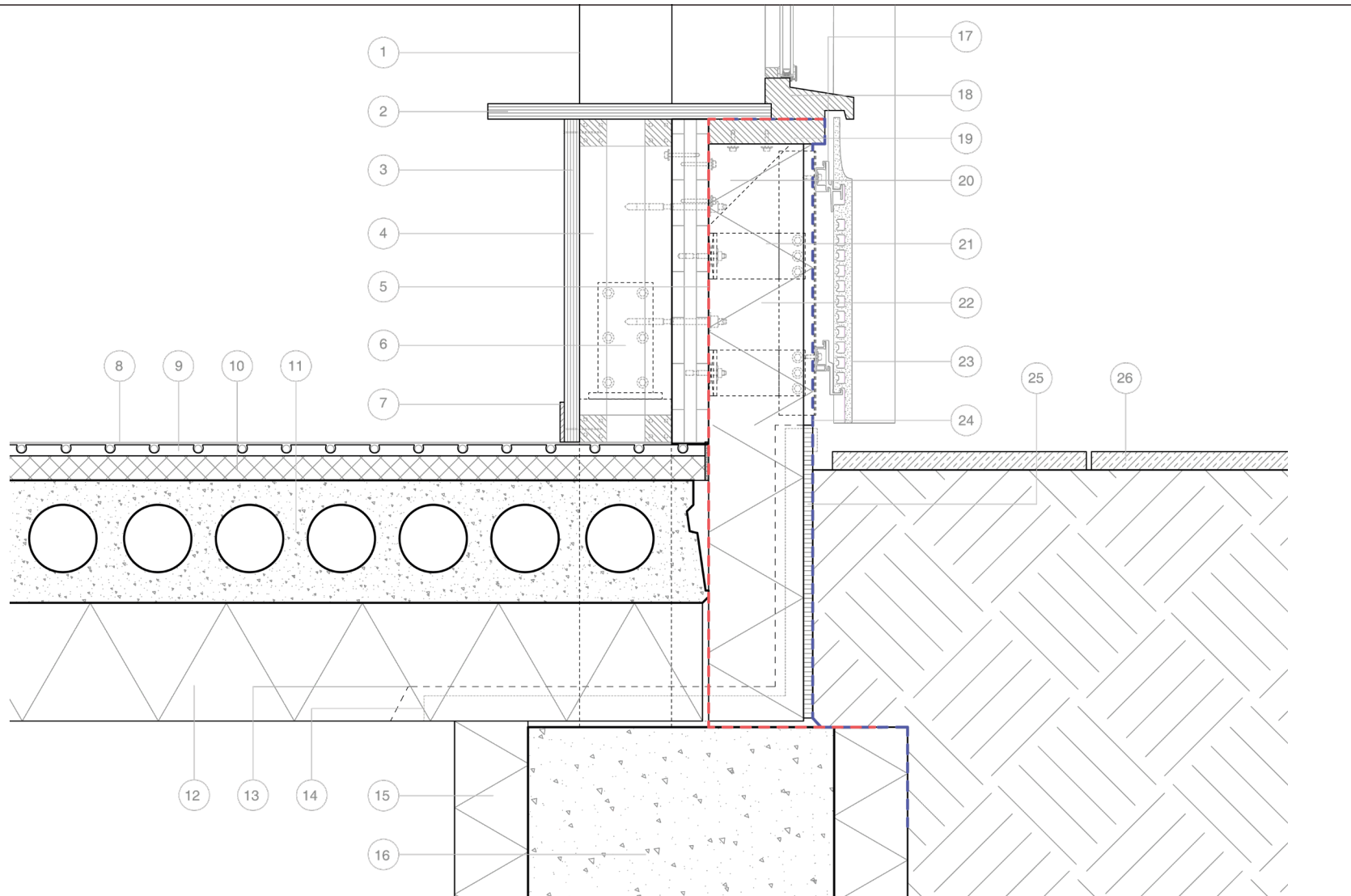


Fig. 57. ground floor and foundation detail

1. glulam timber column 150x300mm
 2. plywood window sill
 3. plywood finishing
 4. wood framing 44x44mm
 5. vapour barrier
 6. steel bracket on concrete foot
 7. wooden plinth
 8. duracryl flooring 2.5mm
 9. system plate with floor heating tubes 20mm
 10. insulation 40mm
 11. concrete hollow-core slab floor
 12. insulation
 13. cut out for ventilation duct
 14. crawl space ventilation duct
 15. insulated formwork
 16. concrete foundation
 17. aluminium profile
 18. wooden window frame 67x114mm
 19. casement frame
 20. corner steel
 21. aluminium facade support system
 22. iCell cellulose insulation 170mm
Rd = 4,72 m² K/W
 23. ceramic facade cladding
 24. watertight barrier
 25. side board
 26. granite pavement
-

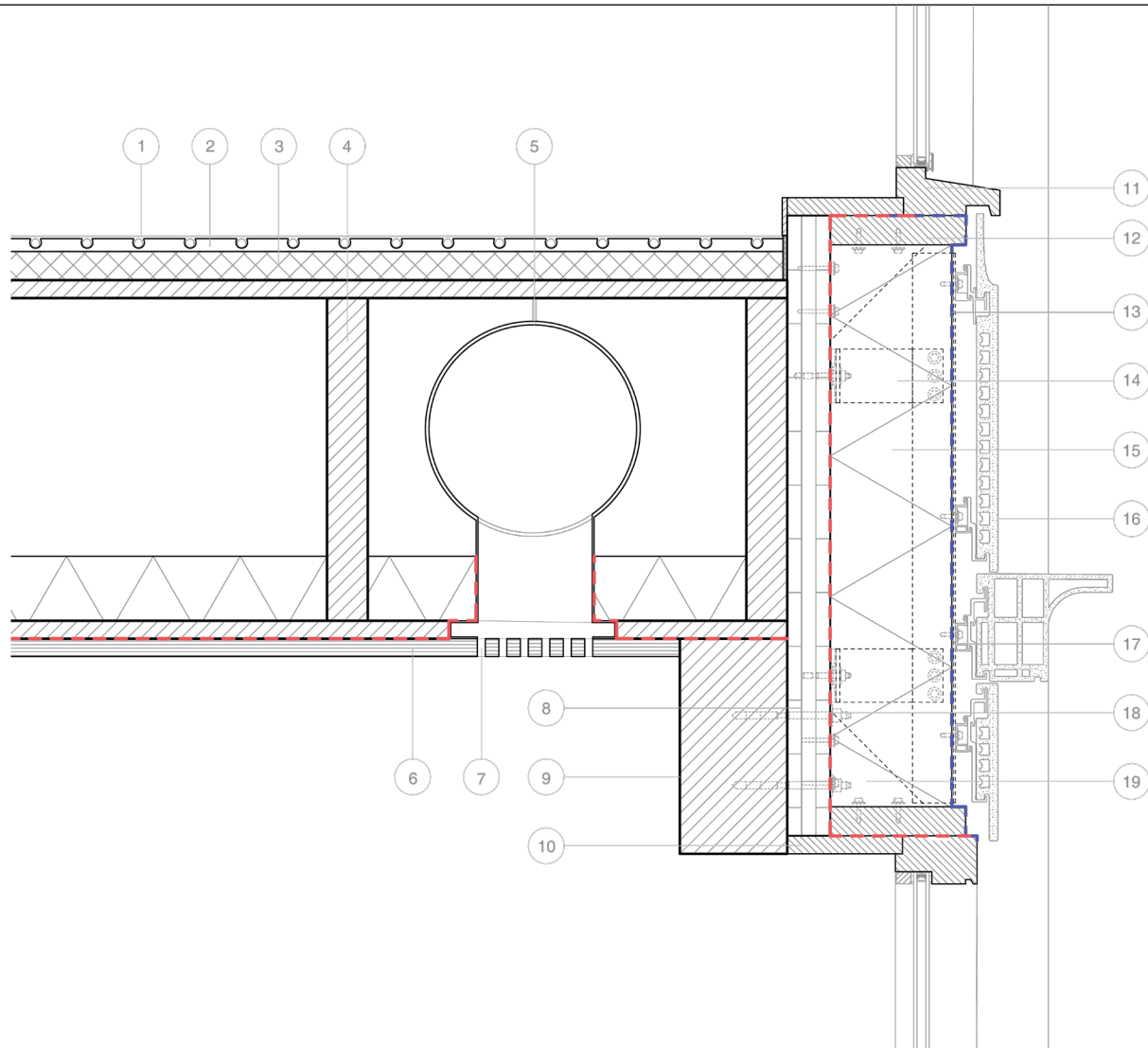


Fig. 58. floor and facade detail



-
1. duracryl flooring 2.5mm
 2. system plate with floor heating tubes 20mm
 3. insulation 40mm
 4. kerto ripa floor element 500mm
KRB 2400x25-5x57x450-2400x25
with 90mm mineral wool
 5. airduct 300mm
 6. white washed plywood ceiling panel
 7. integrated ventilation slits milled in
the plywood ceiling
 8. cross laminated timber 60mm
 9. glulam timber beam 150x300mm
 10. window reveal
 11. wooden window frame 67x114mm
 12. casement frame
 13. watertight barrier
 14. aluminium facade support system
 15. iCell cellulose insulation 170mm
 $R_d = 4,72 \text{ m}^2 \text{ K/W}$
 16. ceramic facade cladding
 17. aluminium profile
 18. vapour barrier
 19. corner steel
-

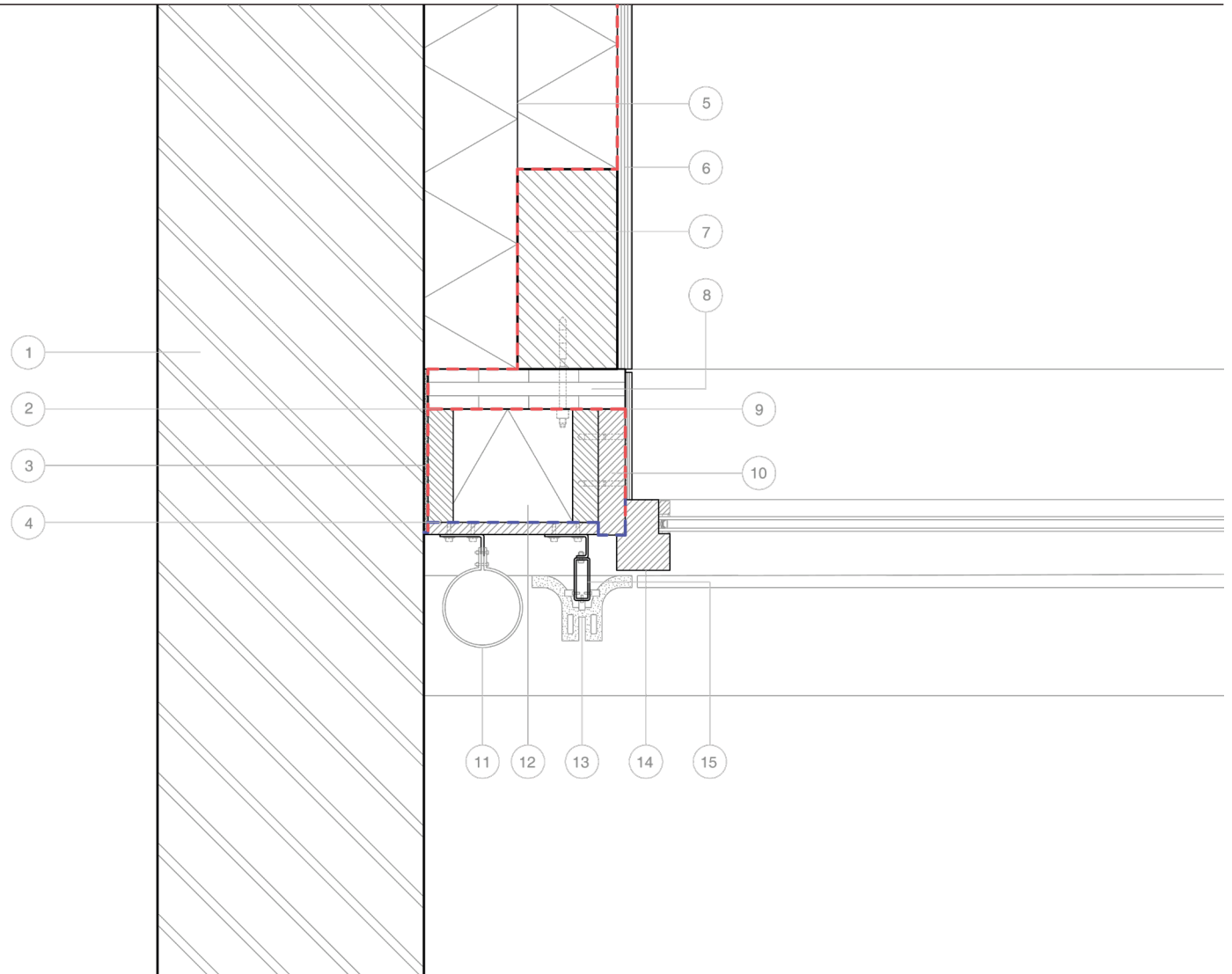


Fig. 59. horizontal detail observatory meeting the existing annex



1. existing masonry
 2. vapour barrier
 3. compriband
 4. watertight barrier
 5. insulation
 6. plywood finishing
 7. glulam timber column 150x300mm
 8. cross laminated timber 60mm
 9. window reveal
 10. casement frame
 11. rainwater drainage
 12. wood framing with
iCell cellulose insulation 170mm
Rd = 4,72 m2 K/W
 13. ceramic facade cladding
 14. wooden window frame
 15. aluminium profile
-

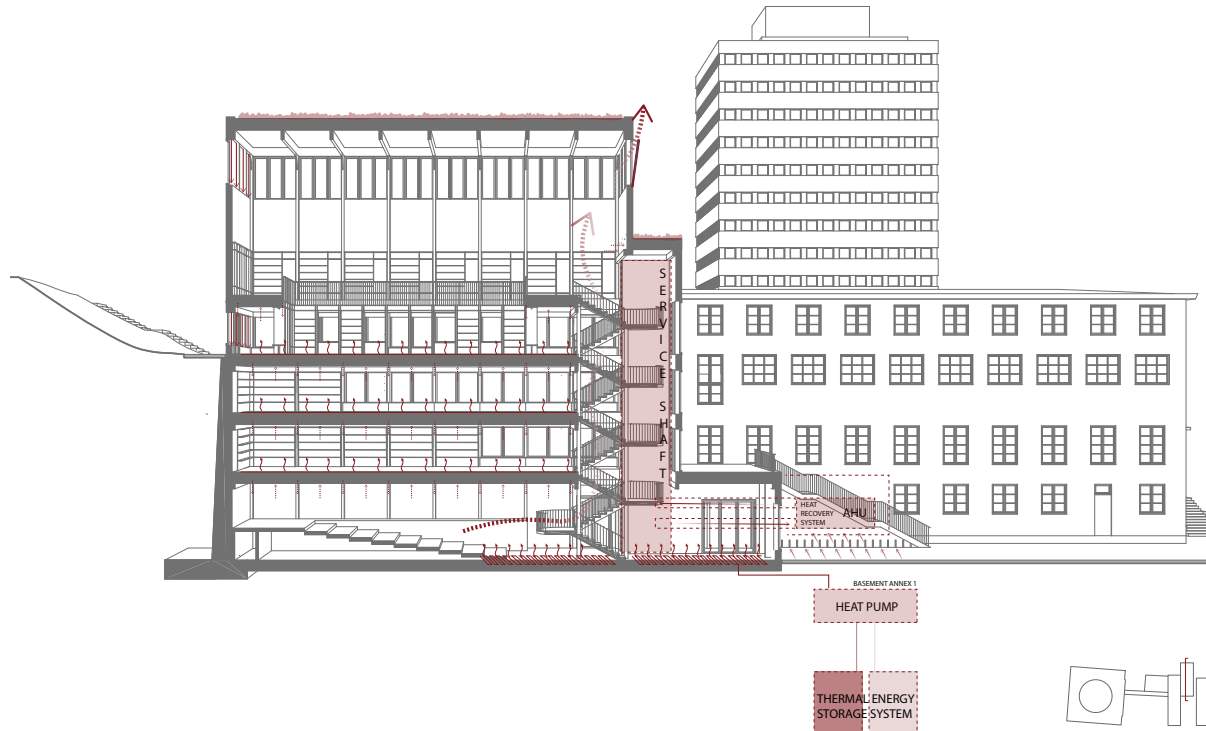


Fig. 60. climate principles

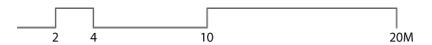




Fig. 61. multiple shutter configurations



Fig. 62. multiple shutter configurations



Fig. 63. playful variations of the shutter's two colored sides

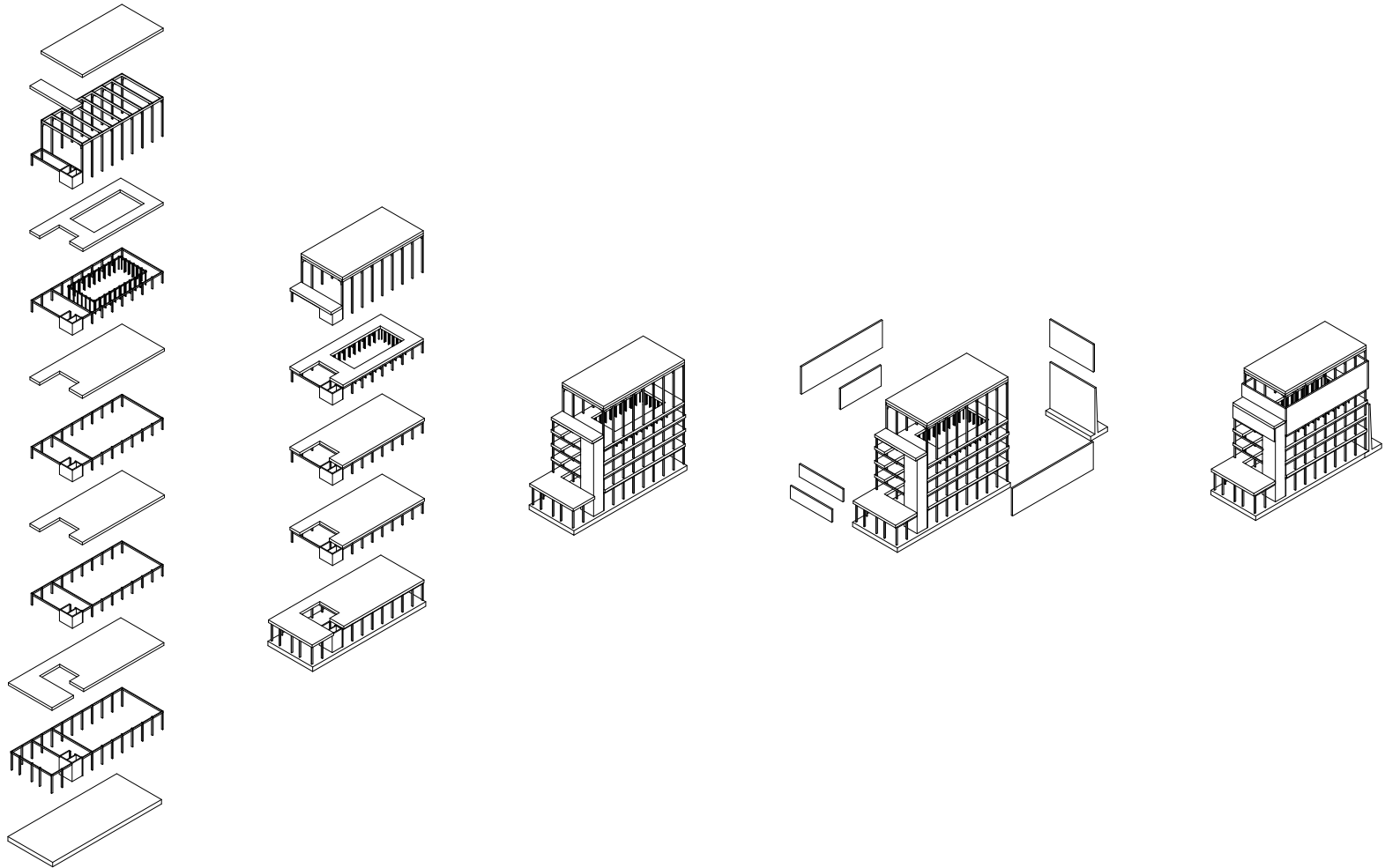


Fig. 64. construction sequence

- Fig. 1. Urban, Kamil. (2023). 1:25 Model. [Photograph].
- Fig. 2. Kubicka, Dominika. (2023). 1:25 Model. [Photograph].
- Fig. 3. Kubicka, Dominika. (2023). 1:25 Model. [Photograph].
- Fig. 4. Made in collaboration with research group. (2023). Lister County Courthouse Analysis. [Digital drawing].
- Fig. 5. Made by author. (2023). 1:25 Model. [Photograph].
- Fig. 6. Made by author. (2023). 1:25 Model. [Photograph].
- Fig. 7. Made by author. (2023). 1:25 Model. [Photograph].
- Fig. 8. Made by the author. (2023). The Unfolded Facades of the Library. [Sketch].
- Fig. 9. Made by the author. (2024). The Hallway. [Digital Drawing].
- Fig. 10. Made by the author. (2024). The Stairs. [Digital Drawing].
- Fig. 11. Made by the author. (2024). The Observatory. [Digital Drawing].
- Fig. 12. Made by the author. (2024). Site Plan. [Digital Drawing].
- Fig. 13. Made by the author. (2024). Site Plan. [Digital Drawing].
- Fig. 14. Made by the author. (2024). Granite Plinth Surrounding the Building. [Digital Drawing].
- Fig. 15. Made by the author. (2024). Program and Allocated Squared Metres. [Digital Drawing].
- Fig. 16. Made by the author. (2024). Ground Floor Plan. [Digital Drawing].
- Fig. 17. Made by the author. (2024). First Floor Plan. [Digital Drawing].
- Fig. 18. Made by the author. (2024). Second Floor Plan. [Digital Drawing].
- Fig. 19. Made by the author. (2024). Third Floor Plan. [Digital Drawing].
- Fig. 20. Made by the author. (2024). Third Floor Mezzanine Plan. [Digital Drawing].
- Fig. 21. Made by the author. (2024). Entrance to the Observatory between the Annexes. [Digital Drawing].
- Fig. 22. Made by the author. (2024). Climbing the Stairs Next to the Facade. [Digital Drawing].
- Fig. 23. Made by the author. (2024). The Hallway Connecting the Library to the Observatory. [Digital Drawing].
- Fig. 24. Made by the author. (2024). The Reading Room Versus the Rotunda. [Digital Drawing].
- Fig. 25. Made by the author. (2024). The Reading Room Versus the Rotunda. [Digital Drawing].
- Fig. 26. Made by the author. (2024). The Reading Room Versus the Rotunda. [Digital Drawing].
- Fig. 27. Made by the author. (2024). The Reading Room in the Rotunda. [Digital Drawing].
- Fig. 28. Made by the author. (2024). The Reading Room Floor Plan. [Digital Drawing].
- Fig. 29. Made by the author. (2024). Interior Impression of The Reading Room. [Digital Drawing].

- Fig. 30. Made by the author. (2024). The Model as an Object. [Photograph].
- Fig. 31. Made by the author. (2024). Section of the Observatory Reading Room. [Photograph].
- Fig. 32. Made by the author. (2024). The Entrance to the Inner Court. [Photograph].
- Fig. 33. Made by the author. (2024). The Built-In Furniture. [Photograph].
- Fig. 34. Made by the author. (2024). A Reading Spot in the Inner Court. [Photograph].
- Fig. 35. Made by the author. (2024). The Ambulatory. [Photograph].
- Fig. 36. Made by the author. (2024). A Seat in the Window on the Mezzanine. [Photograph].
- Fig. 37. Made by the author. (2024). The Mezzanine. [Photograph].
- Fig. 38. Made by the author. (2024). The Set of Stairs. [Digital Drawing].
- Fig. 39. Urban, K. (2023). Stockholm City Library. [Digital Sketch].
- Fig. 40. Urban, K. (2023). Lister County Courthouse. [Digital Sketch].
- Fig. 41. Ngo, D. (2023). Gothenburg City Hall. [Photograph].
- Fig. 42. E:son Lindman, Å. (n.d.). Staircase in the Main Hall. [Photograph]. Scandinavian Collectors.
- Fig. 43. Asplund, E.G. (1923). Up to the Final Stairs of Lewerentz's Crematorium Room. [Photograph].
- Fig. 44. Fredriksson, J. (2014) Söderbergs Trappor. [Photograph].
- Fig. 45. Pedersen, H. (2018). Stairs in Södermalm. [Photograph].
- Fig. 46. Made by the author. (2023). The Studio Walking the Malmskillnadstrappan. [Photograph].
- Fig. 47. van den Bogert, J.Y. (2023). Malmskillnadstrappan at Night. [Photograph].
- Fig. 48. Made by the author. (2024). Section through the Observatory. [Digital Drawing].
- Fig. 49. Made by the author. (2024). Section through the Stairs Leading up the Observatory Hill. [Digital Drawing].
- Fig. 50. Made by the author. (2024). North Elevation from Odengatan. [Digital Drawing].
- Fig. 51. Made by the author. (2024). North Facade Elevation. [Digital Drawing].
- Fig. 52. Made by the author. (2024). North Facade Elevation Materialisation. [Digital Drawing].
- Fig. 53. Made by the author. (2024). Ceramic Facade. [Digital Drawing].
- Fig. 54. Made by the author. (2024). Ceramic Facade Elements. [Digital Drawing].
- Fig. 55. Made by the author. (2024). Technical Section through the Observatory. [Digital Drawing].
- Fig. 56. Made by the author. (2024). Observatory Meeting the Existing Annex. [Digital Drawing].
- Fig. 57. Made by the author. (2024). Ground Floor and Foundation Detail. [Digital Drawing].

Fig. 58. Made by the author. (2024). Floor and Facade Detail. [Digital Drawing].

Fig. 59. Made by the author. (2024). Horizontal Detail Observatory Meeting the Existing Annex. [Digital Drawing].

Fig. 60. Made by the author. (2024). Climate Principles. [Digital Drawing].

Fig. 61. Made by the author. (2024). Multiple Shutter Configurations. [Photograph].

Fig. 62. Made by the author. (2024). Multiple Shutter Configurations. [Photograph].

Fig. 63. Made by the author. (2024). Playful Variations of the Shutter's Two Colored Sides. [Photograph].

Fig. 64. Made by the author. (2024). Construction Sequence. [Digital Drawing].

project book
the right to the city [library]

julia van der ploeg
interiors buildings cities
msc3/4 palace
4573560

fellow students

Andrea Beznı̇tchi
Carlotta Luciano
Conor O'Kelly
Dominika Kubicka
Eirini Sideri
Francesca Tritapepe
Haoyu Wang
Jan Yke van den Bogert
Janis Kivlinieks
Joanna Pilecka
Jules van der Meijs
Julia Pałęga
Kamil Urban
Kelly Gumbs
Lenore Liu
Liuying Chen
Marianna Lappa
Marijke de Groot
Mikolaj Waszkiewicz
Natalia Simonarson
Olga Strzałkowska
Pelle Kuipers
Pien van der Linde
Renzo Westerbeek
Ries Schouten
Simon Muntz
Snigdha Ray
Sora Kaito
Tijana Čulum
Zhengxin Fang

tutors

Daniel Rosbottom
Jurjen Zeinstra
Mark Pimlott
Sam De Vocht
Sereh Mandias
Susanne Pietsch
Elina Karanastasi
