

MSC 4 PRAGUE STUDIO | Jiameng II 4738217

VYSEHRAD PERFORMING ART CENTER

architectural translation of indigenous images in Prague

## P2 RECAP | SITE

### Vysehrad

Founded in 10th century as an initial royal fortress, it is believed as the birthplace of Czech nation and later developed to the city Prague.

Vysehrad has become a national symbol and been beloved by both locals and tourists.

At present, the whole site has been cautiously preserved as a historical compound, where historical buildings from ten centuries scattered all around the greenish land.



Site Location

## P2 RECAP | SITE

### Vysehrad

Founded in 10th century as an initial royal fortress, it is believed as the birthplace of Czech nation and later developed to the city Prague.

Vysehrad has become a national symbol and been beloved by both locals and tourists.

At present, the whole site has been cautiously preserved as a historical compound, where historical buildings from ten centuries scattered all around the greenish land.



Site view

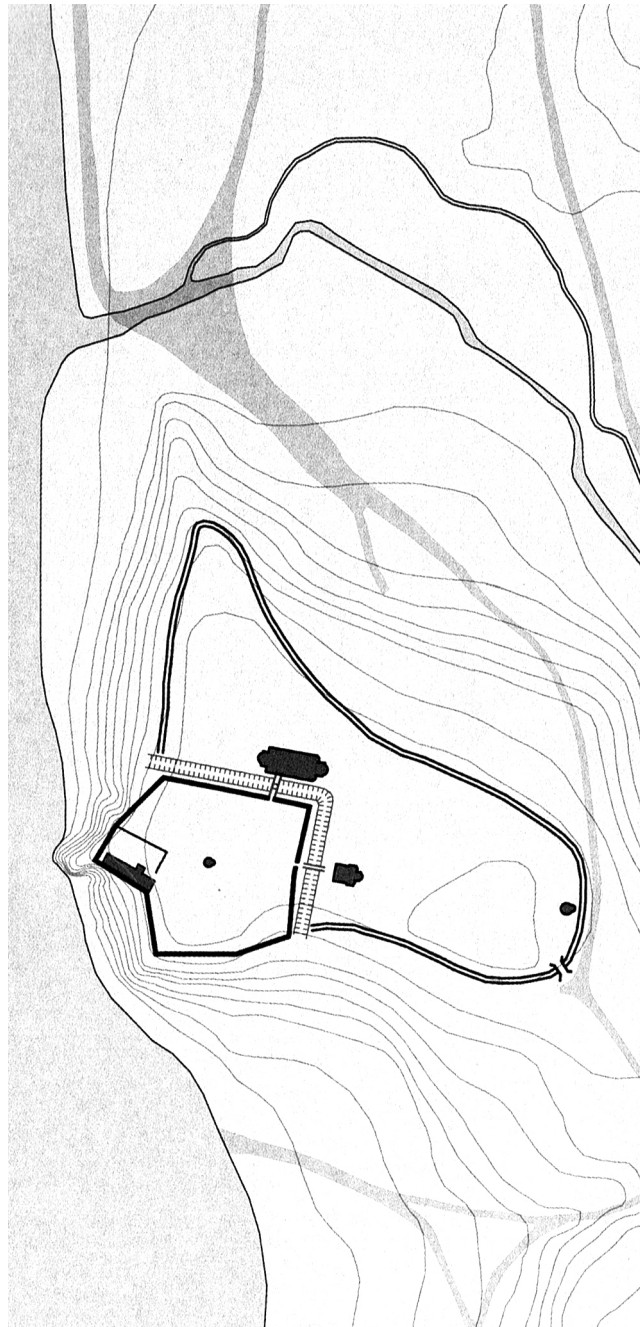
## SITE HISTORY

A fortified Royal Castle (Before 1420)

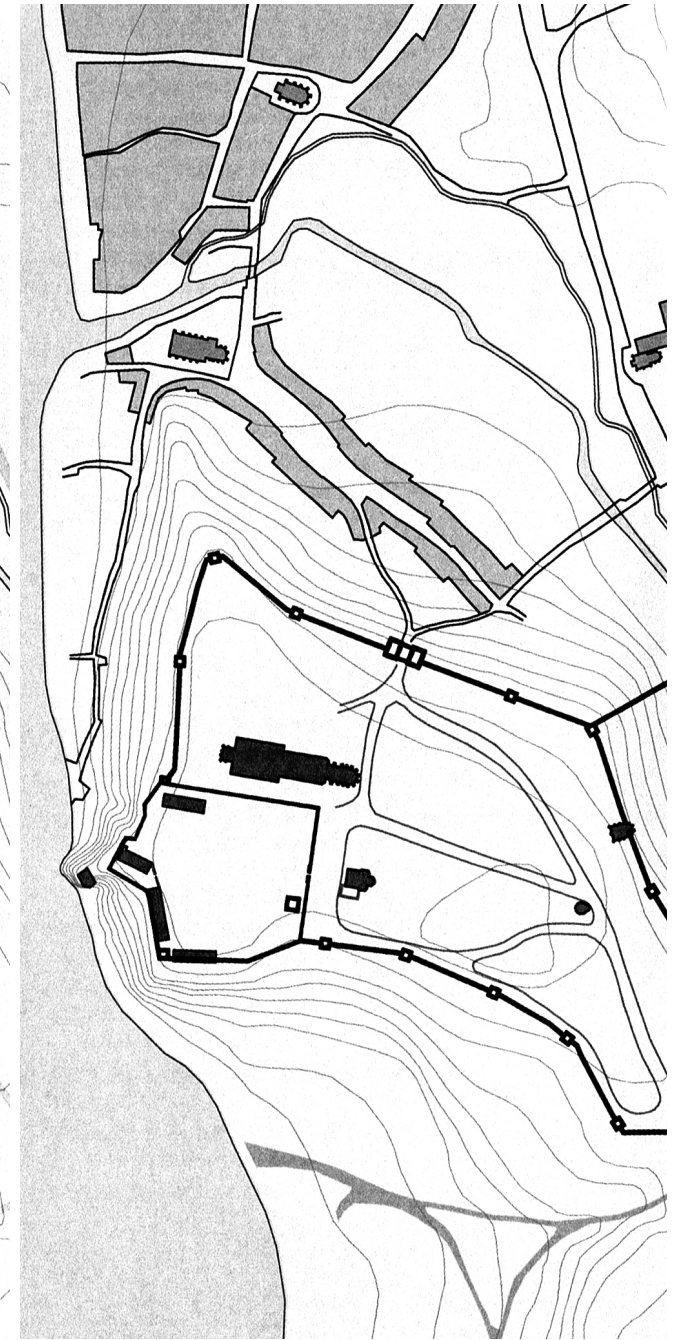
- 960-1000, AD founded
- 11th, concentration of religious buildings
- 1249, the buildings of the acropolis turned into ruins due to battles
- 1348 to 1350, Fortification was extensively redesigned and expanded to connect to simultaneously constructed fortification of the New Town
- 1420, the demise of Vysehra as a royal castle because of Hussite Wars, most of royal acropolis was leveled to the ground

The Town of the Vysehrad Hill (1452-1650)

- new habitantas: mostly poor city people, artisan, unskilled laborers and people with heavy debt.
- upper town: market, town hall, the chapter deanery, the canon's house, a forge, houses with gardens and vineyards, pubs, brothel
- lower town: early medieval market street, church, hospital, spa, lime kiln, beer brewery
- 1650, decision to build the Vysehrad Citadel



Site plan of Fortified Royal Castle



Fortification in 14th Century

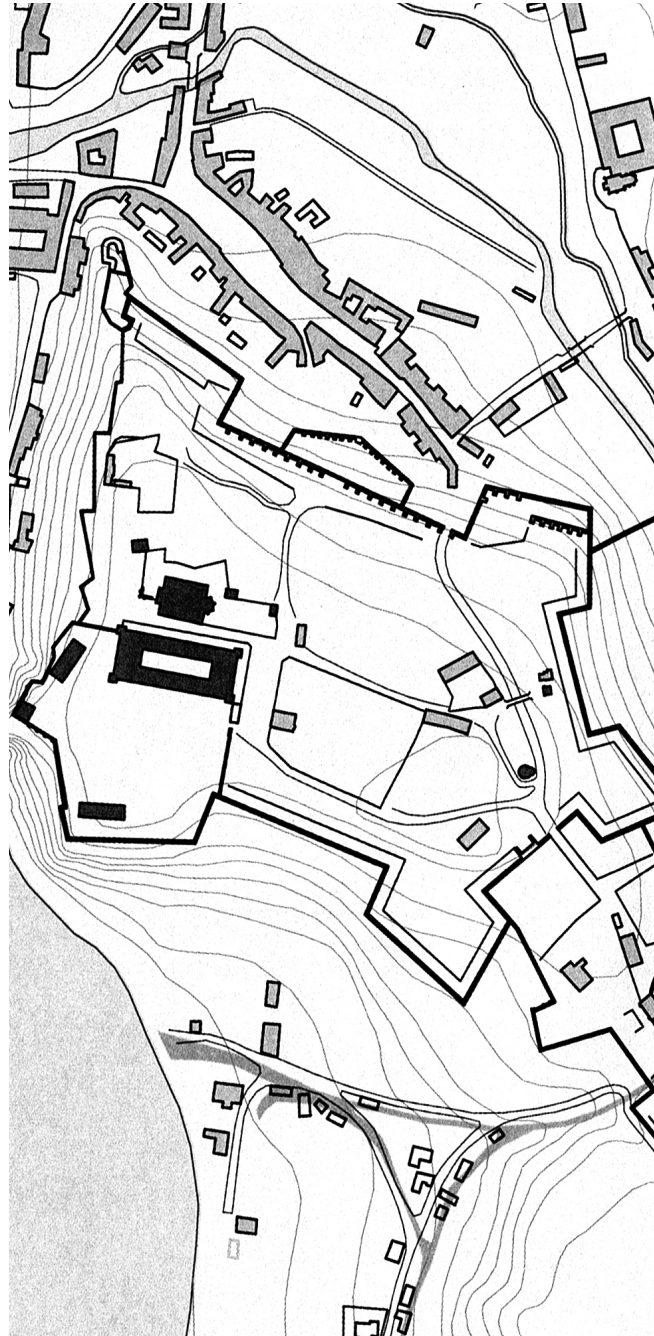
## SITE HISTORY

### The Baroque Citadel (1650-1866)

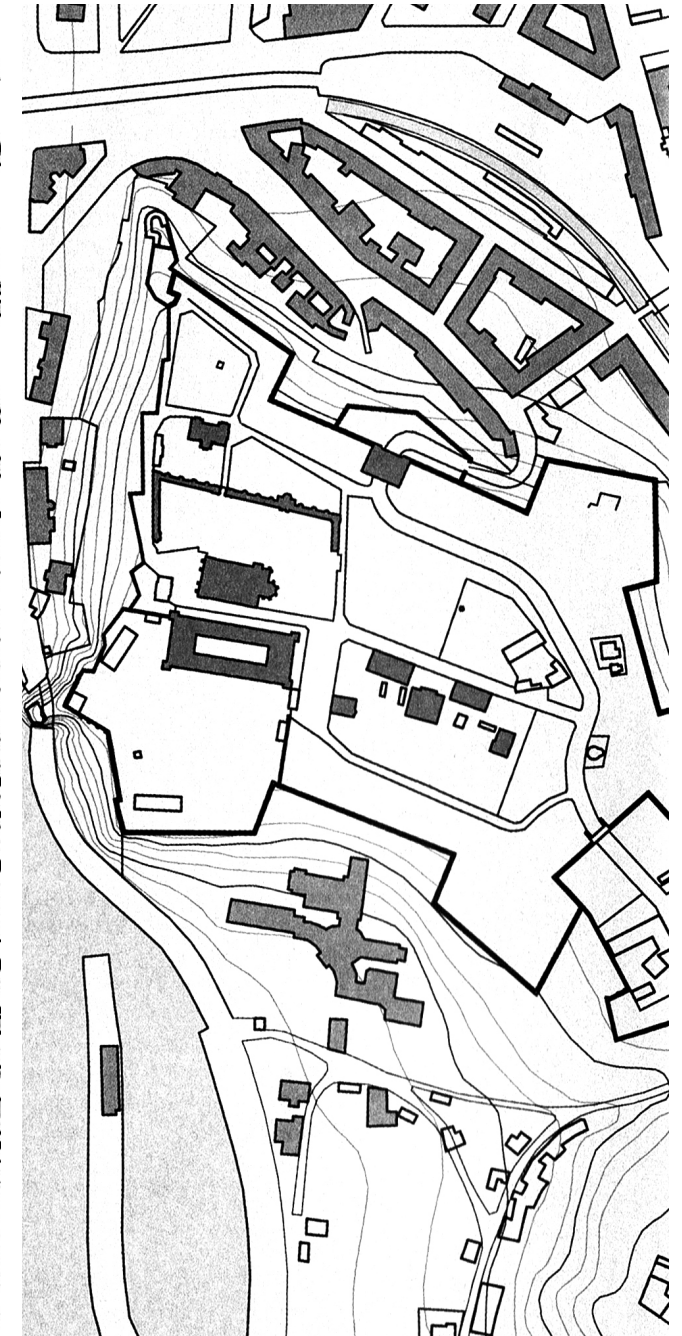
- 1650, demolition of most of the medieval fortifications, the upper town disappeared, the lower town preserved.
- 1651-1652, the outermost angular rampart was reconstructed

### A national symbol (since 1866)

- In old legend: origin of Prague
- In Medieval: a testimony to the ancient origin of the Premyslid dynasty
- Present: national symbol connected to earliest history of the Czech nation.



The Baroque Citadel (1650-1866)

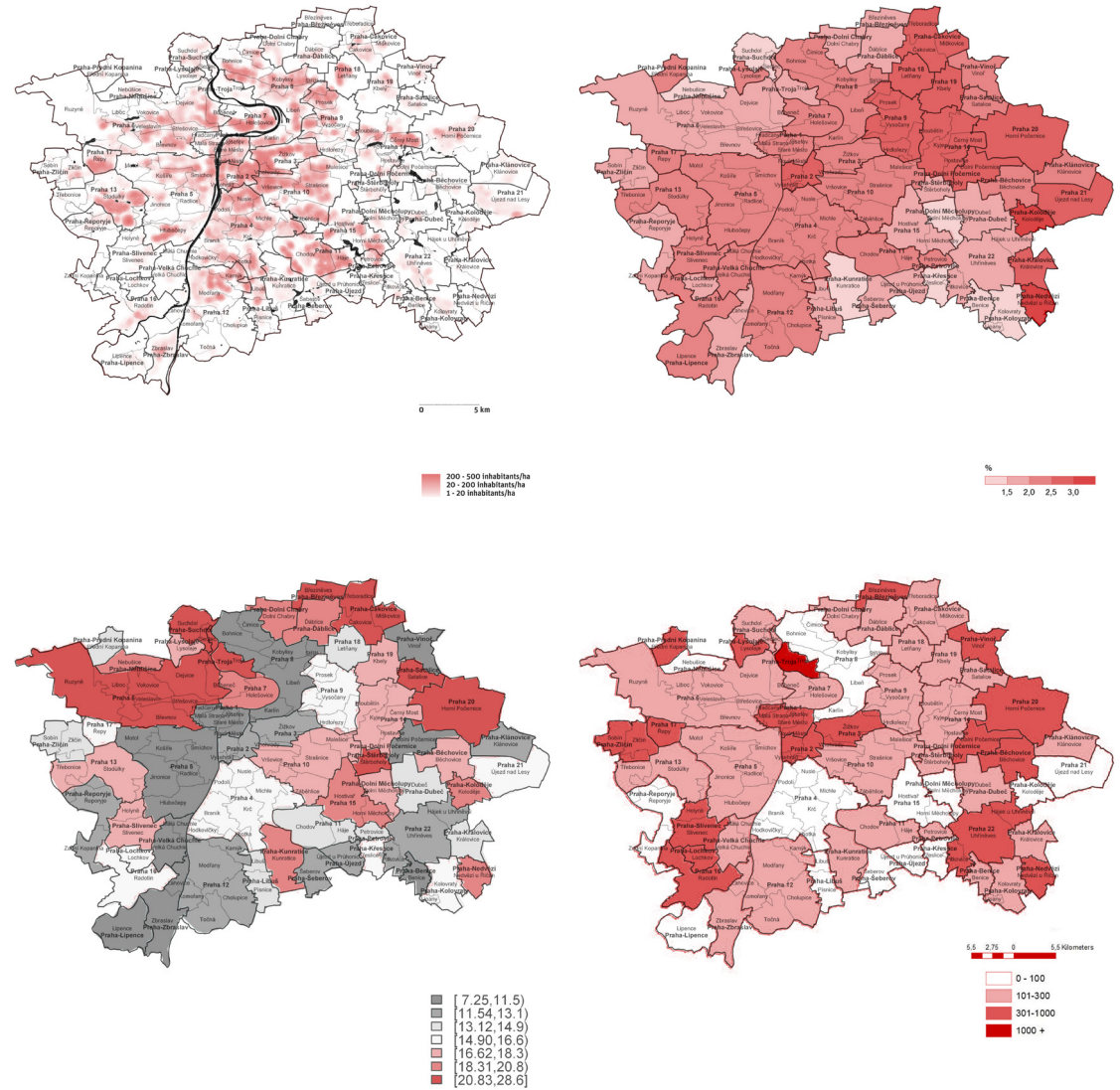


Early 20th Century

# STATISTICAL ANALYSIS:

Vysehrad is located in cadastral district Prague 2 and next to one of the most desirable Prague neighborhoods, Vinohrady. Vinohrady is most popular among young professionals, international residents and hold one of Prague’s main epicenter of nightlife, while Vysehrad is featured with a more authentic glimpse of Czech lifestyle than Vinohrady. From the official statistic result at end of 2017, Prague 2 is the highest density of population (11, 857). The neighboring Prague 4 is the most populated city section (128455 population).

Vysehrad is meanwhile at the intersection of three areas, Prague 2, Prague 4 and Prague 5. Prague 4 is a large, primarily working class district which isn’t highly desired by tourists or recent arrivals, while Prague 5 is a more upscale neighborhood with newly renovated buildings, hotels, trendy restaurants and shipping center. Farther out of Prague 5 is more residential with houses and recent housing development.



# SITE ANALYSIS

traffic



# SITE ANALYSIS

programmes





# SITE ANALYSIS

segragation of programmes



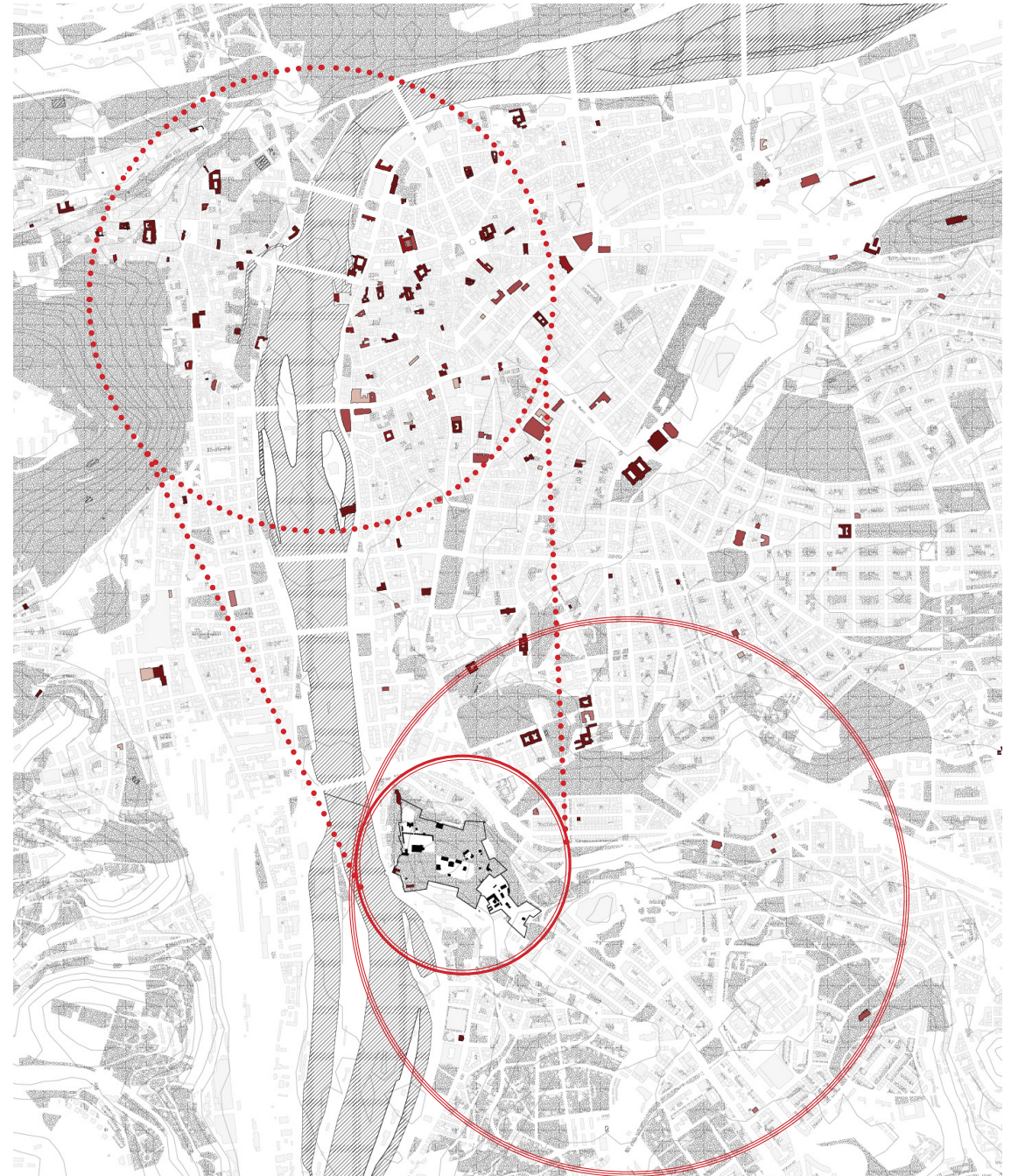
## P2 RECAP | DESIGN INTENTION

How a historical compound with highly symbolic identity response to the ongoing complexity of urban context?

Can Vysehrad be regenerated by creating a secondary identity and introducing new functions beyond its current condition? How will the new identity connect to the existing one and served by specific functions?

How to tackle the coexistence of historical relics and new construction?

How will the scheme respond to the genius loci of Prague?



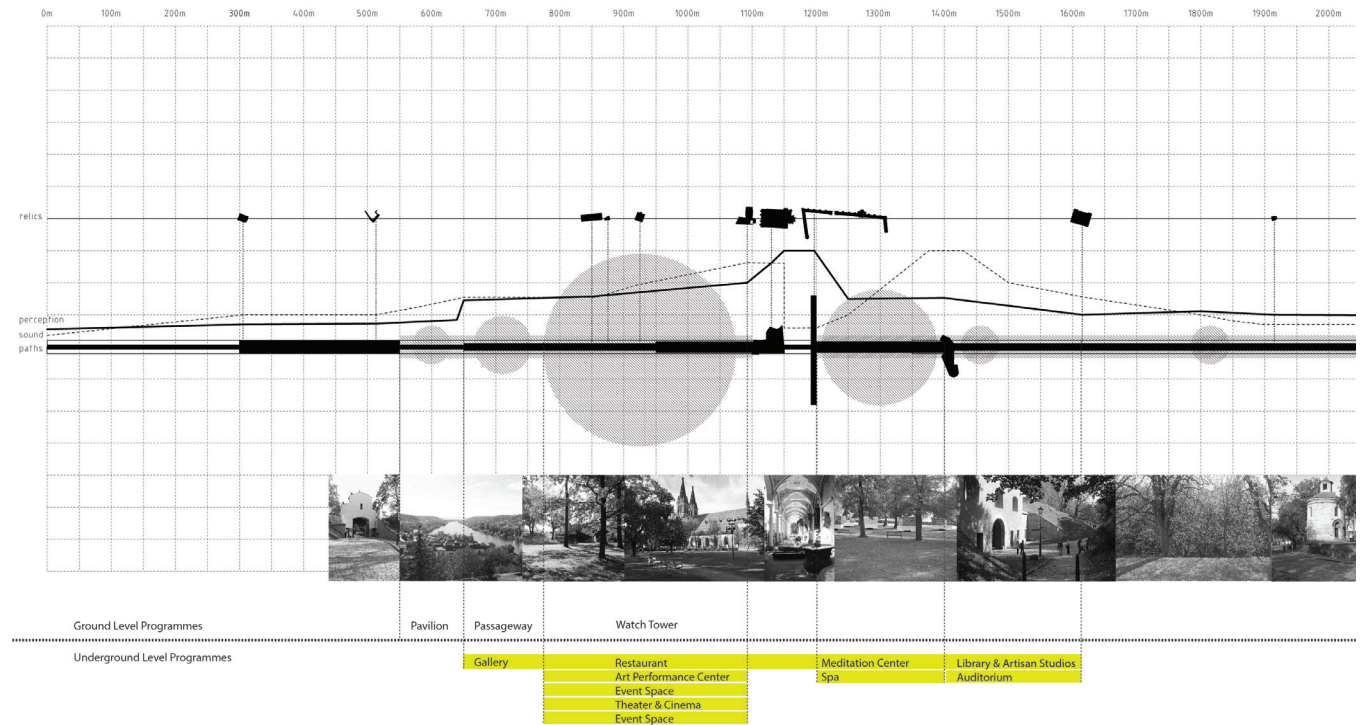
Site analysis diagram

# P2 RECAP | THEME

[Vyšehrad Spring]  
a subterranean cultural compound

The goal of the project is to add a secondary identity to the site, a place where the new possibilities of future Prague will be born. It will be the next cultural compound out of the central Prague. Vyšehrad will be a national symbol not only for its past history but for its creativity to the future as well.

- Program:
- art performing center
  - library
  - gallery
  - artisan studios
  - sanctuary (meditation center)



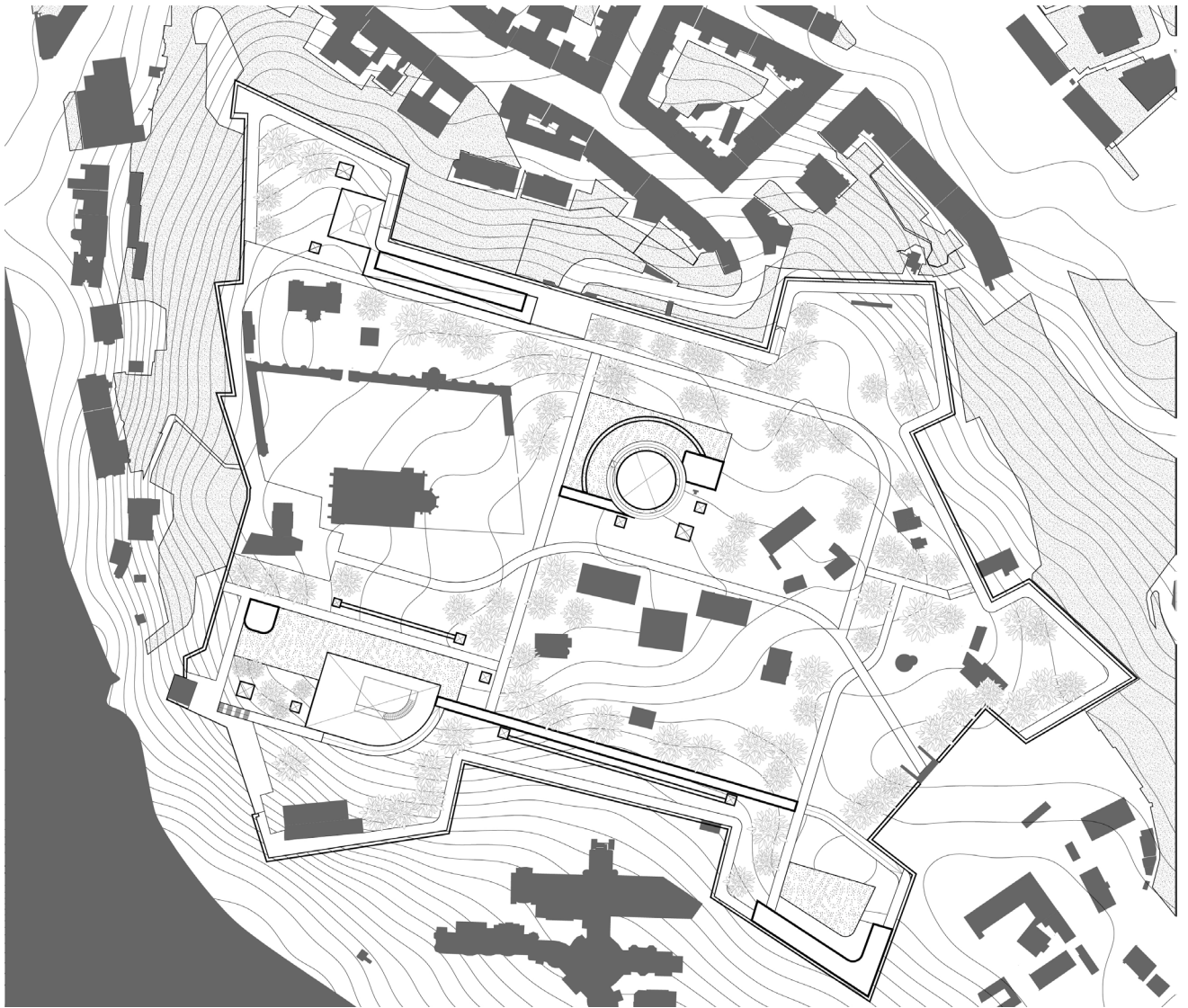
Site Perception Diagram

## P2 RECAP | THEME

[Vyšehrad Spring]  
a subterranean cultural compound

The goal of the project is to add a secondary identity to the site, a place where the new possibilities of future Prague will be born. It will be the next cultural compound out of the central Prague. Vyšehrad will be a national symbol not only for its past history but for its creativity to the future as well.

Program:  
performing art center  
library  
gallery  
artisan studios  
sanctuary (meditation center)



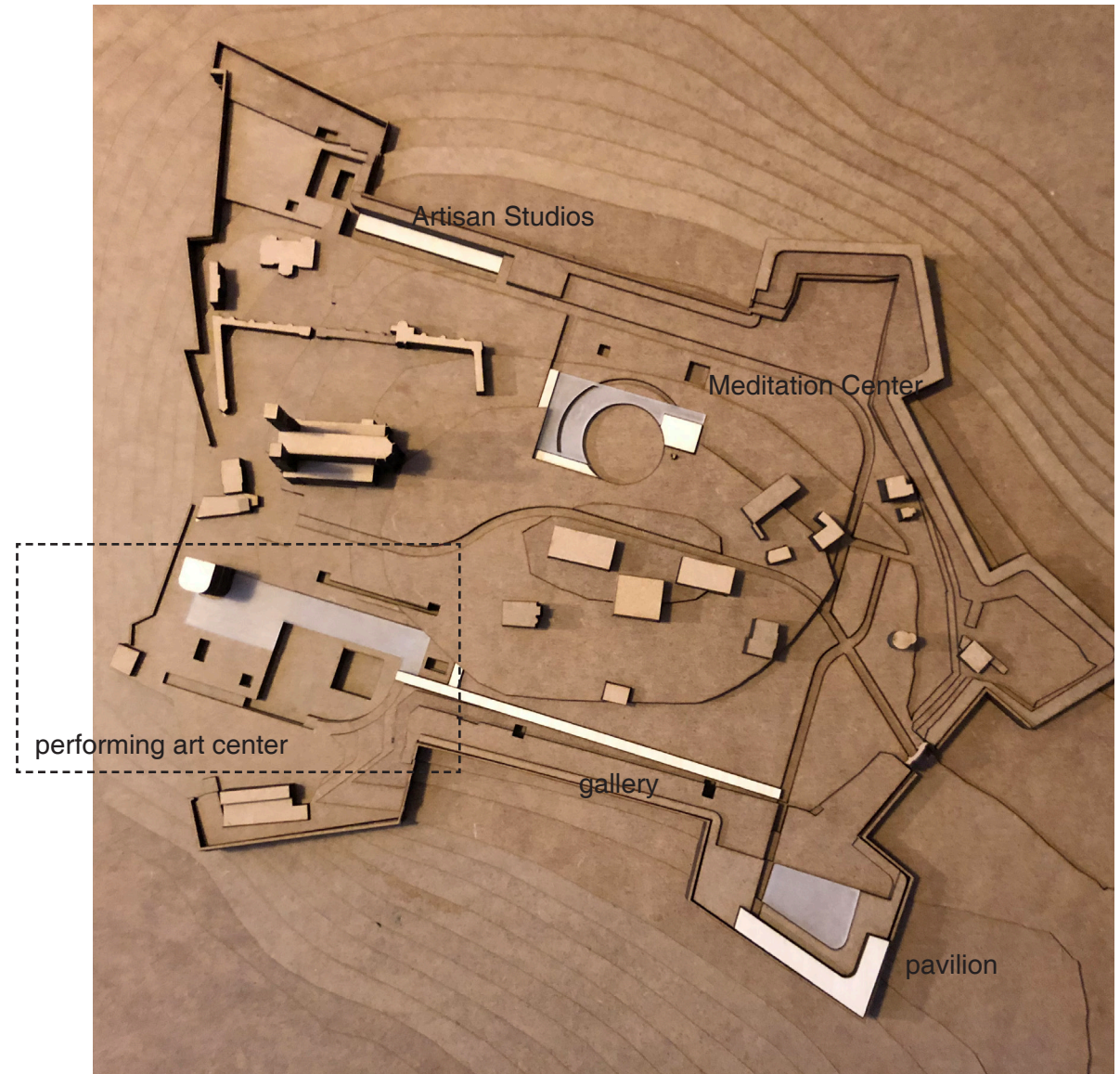
Vysehrad Spring Master Plan

## P2 RECAP | THEME

[Vyšehrad Spring]  
a subterranean cultural compound

The goal of the project is to add a secondary identity to the site, a place where the new possibilities of future Prague will be born. It will be the next cultural compound out of the central Prague. Vyšehrad will be a national symbol not only for its past history but for its creativity to the future as well.

Program:  
performing art center  
library  
gallery  
artisan studios  
sanctuary (meditation center)



Master Plan Model 1:1000

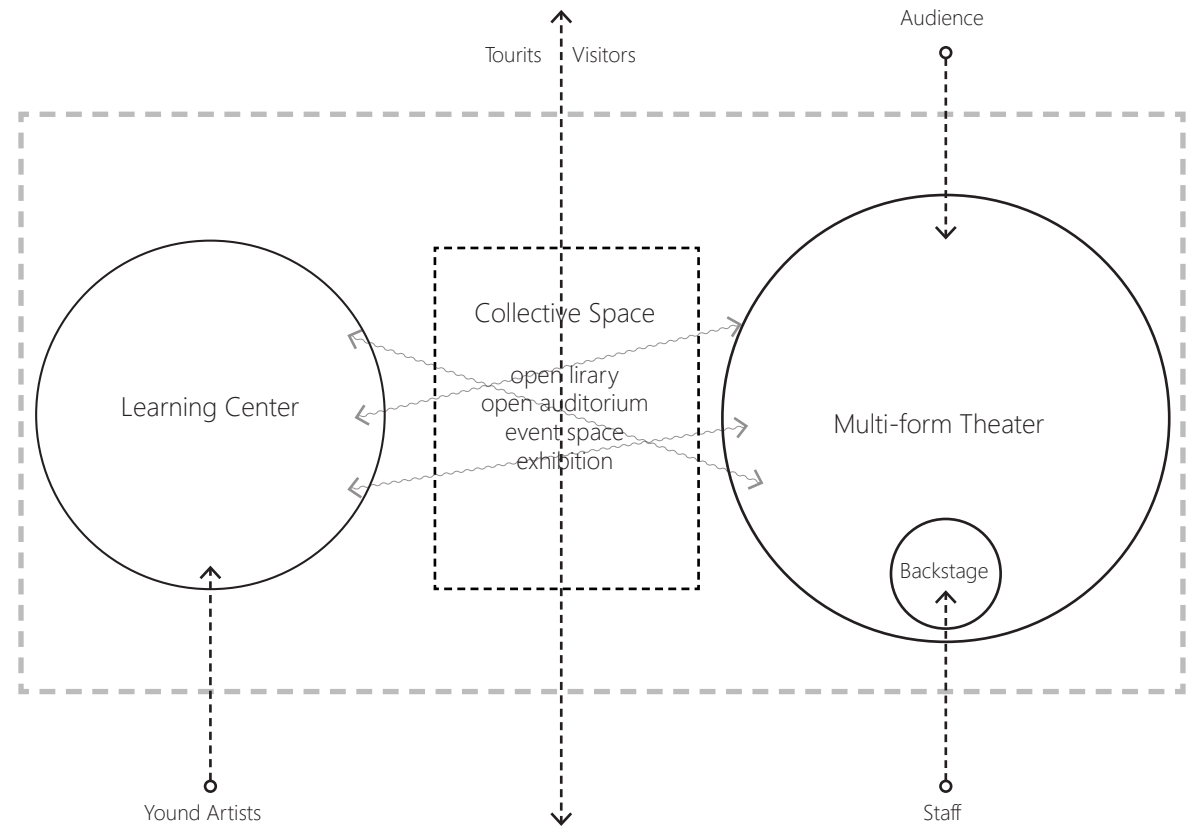
# PRELIMINARY DESIGN | INTENTION

## Project Inception

- Public space with high flexibility to accommodate a wider range of activities
- Young professionals
- Multi-form theater
- Amateur artists
- Educational practice (Music/Dance/Drama studio)

## Programme

- Multi-form theater [professional performance]
- Art Performing Learning Center [Music/Dance/Drama studios]
- Public accessible collective space
- Event Space



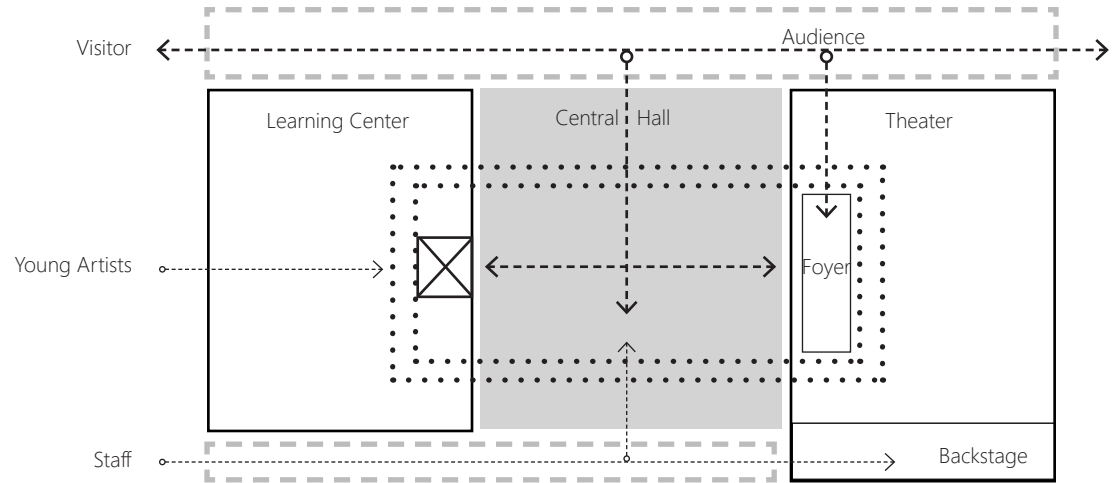
# PRELIMINARY DESIGN | INTENTION

## Independence and connection

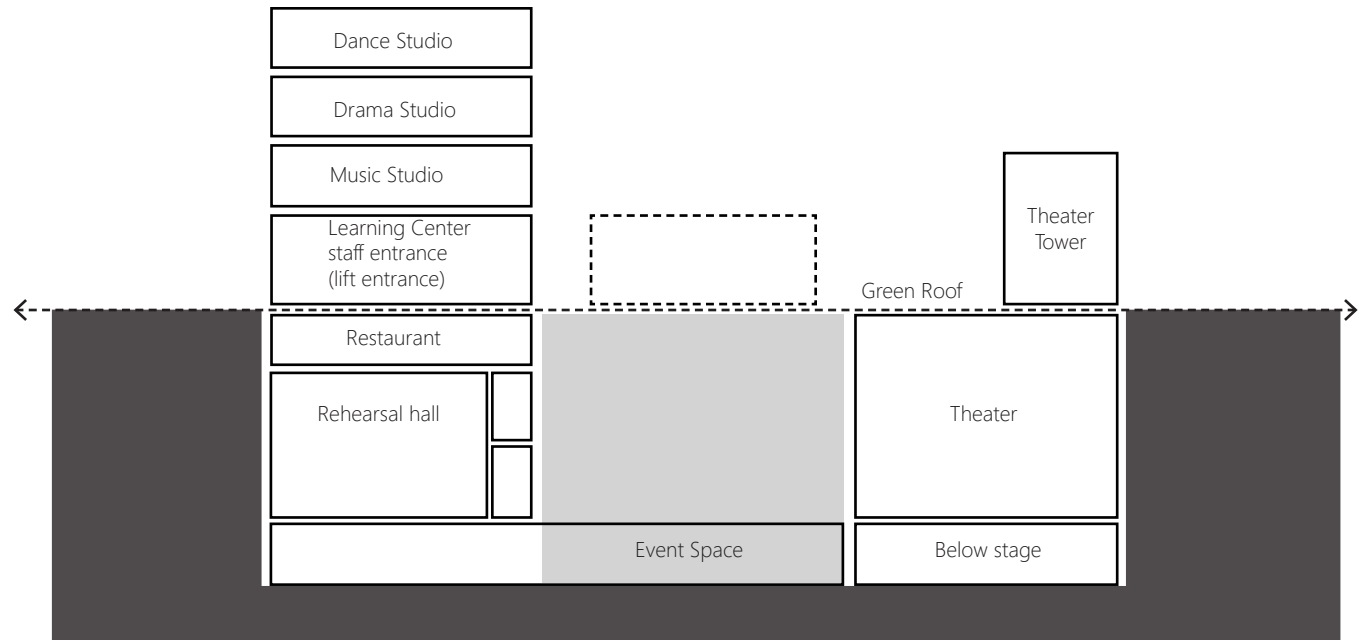
Two major volumes (the learning centre and theatre) are linked by a large collective hall in between while retaining their independence in functions and efficiency in accessibility by separated entrances and circulation system

## Architectural Volume

Break down the volume on the ground level



Program diagram [plan]



Program diagram [section]

# PRAGUE INSPIRATION



## COLONNADE

dominated images of Prague  
massive form  
dramatic cast shadow  
hidden materiality  
strong geometric configuration



## COLOR

Pinkish color tone in different shades



## GRAND STAIRCASE

circulation route  
public space  
component of townscape  
genius loci of Prague  
a sense of promenade



## GALLERY

gallery space of residential blocks and open courtyard formed a pair of shifting roles as stage and audience



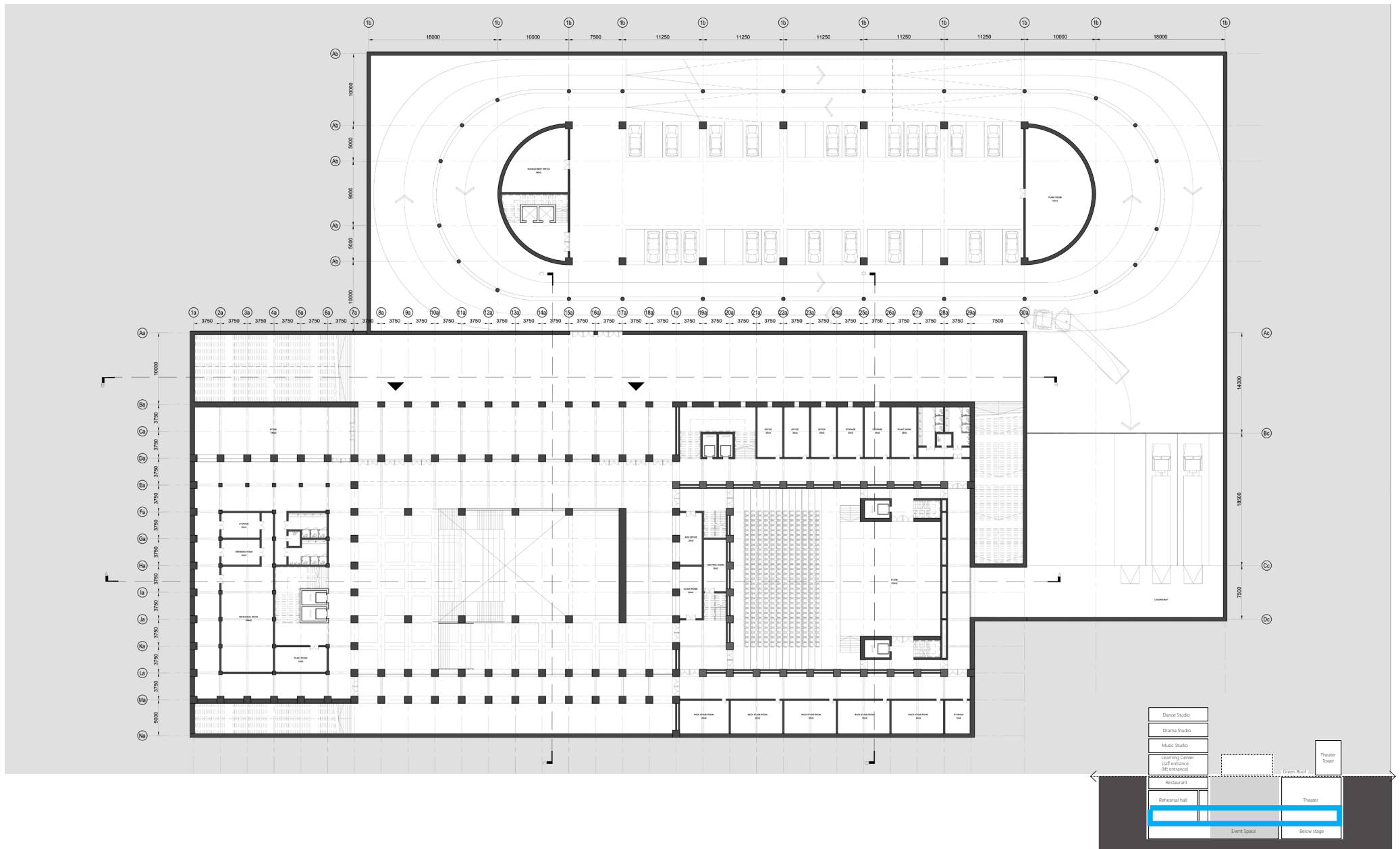
# EXTERIOR VIEW



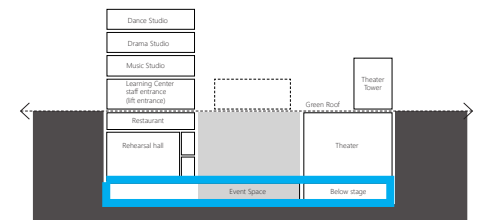
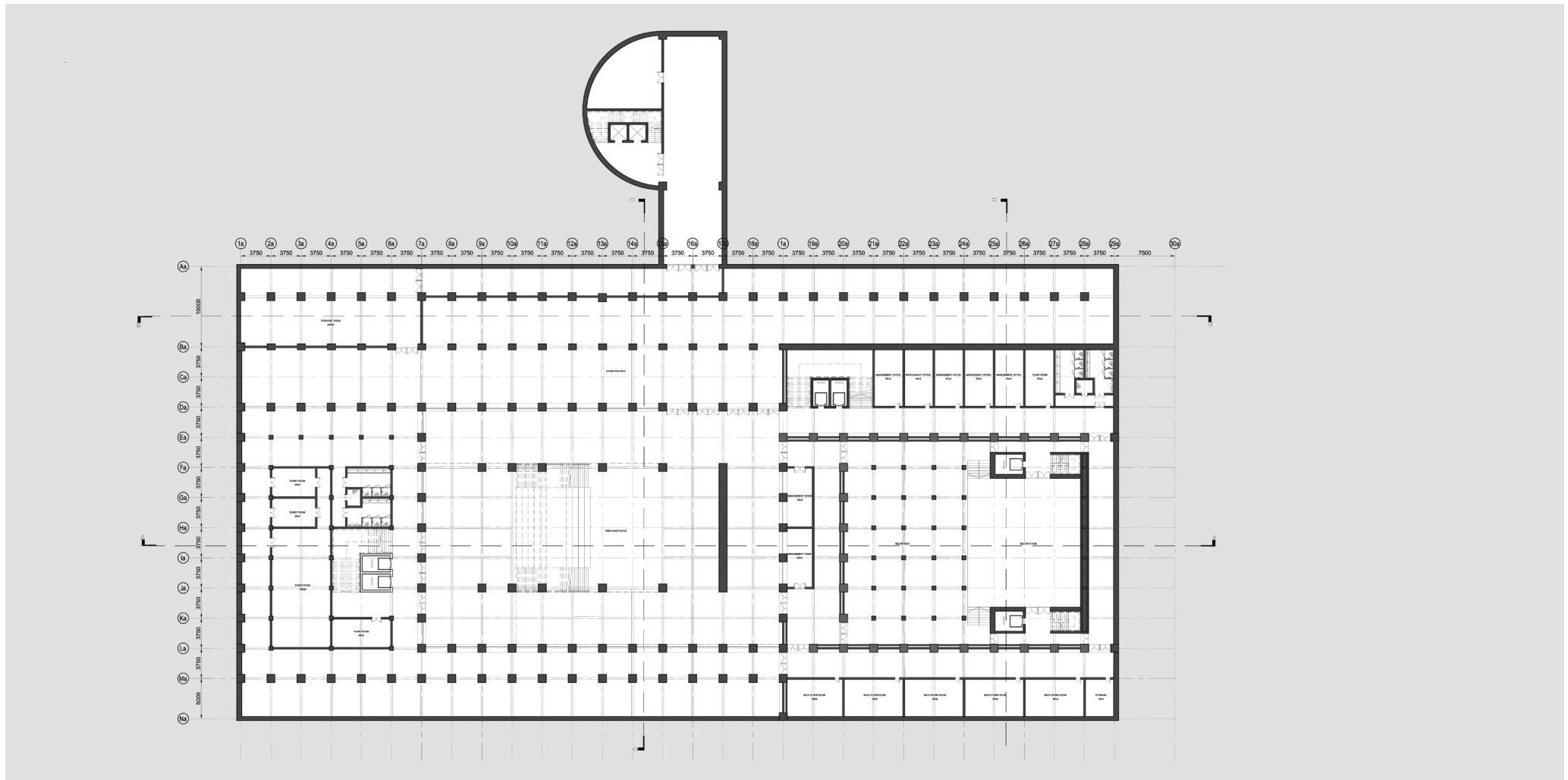
# SITE PLAN



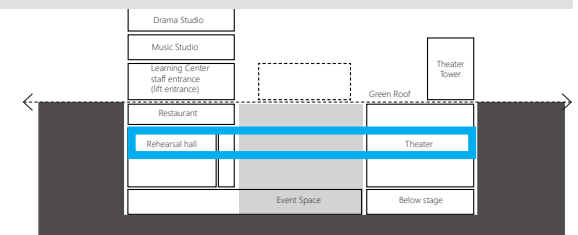
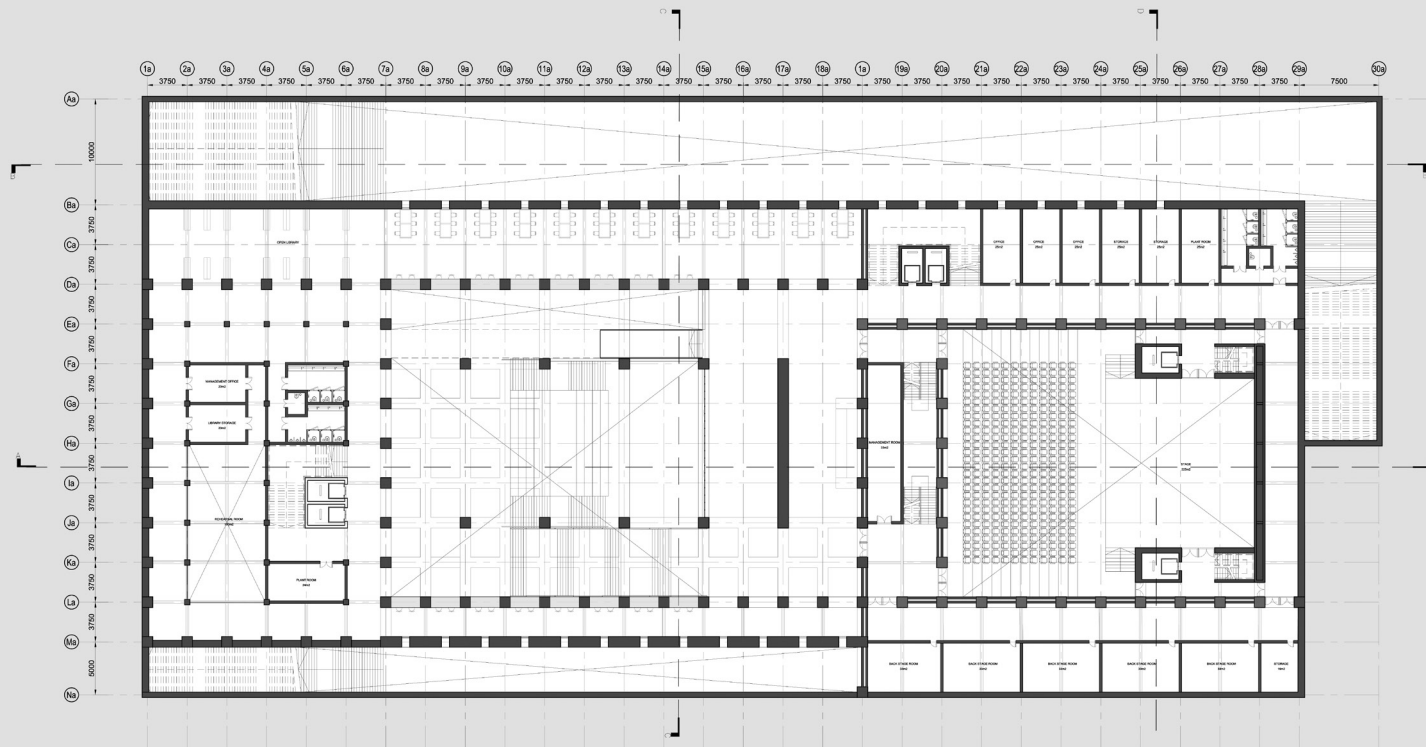
# FLOOR PLANS | ENTRANCE LEVEL (LEVEL -3)



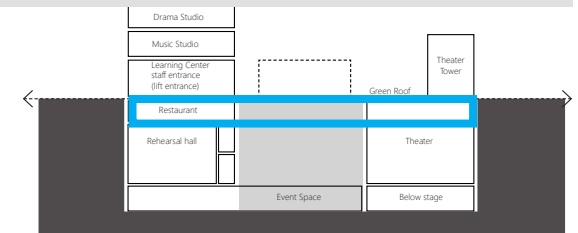
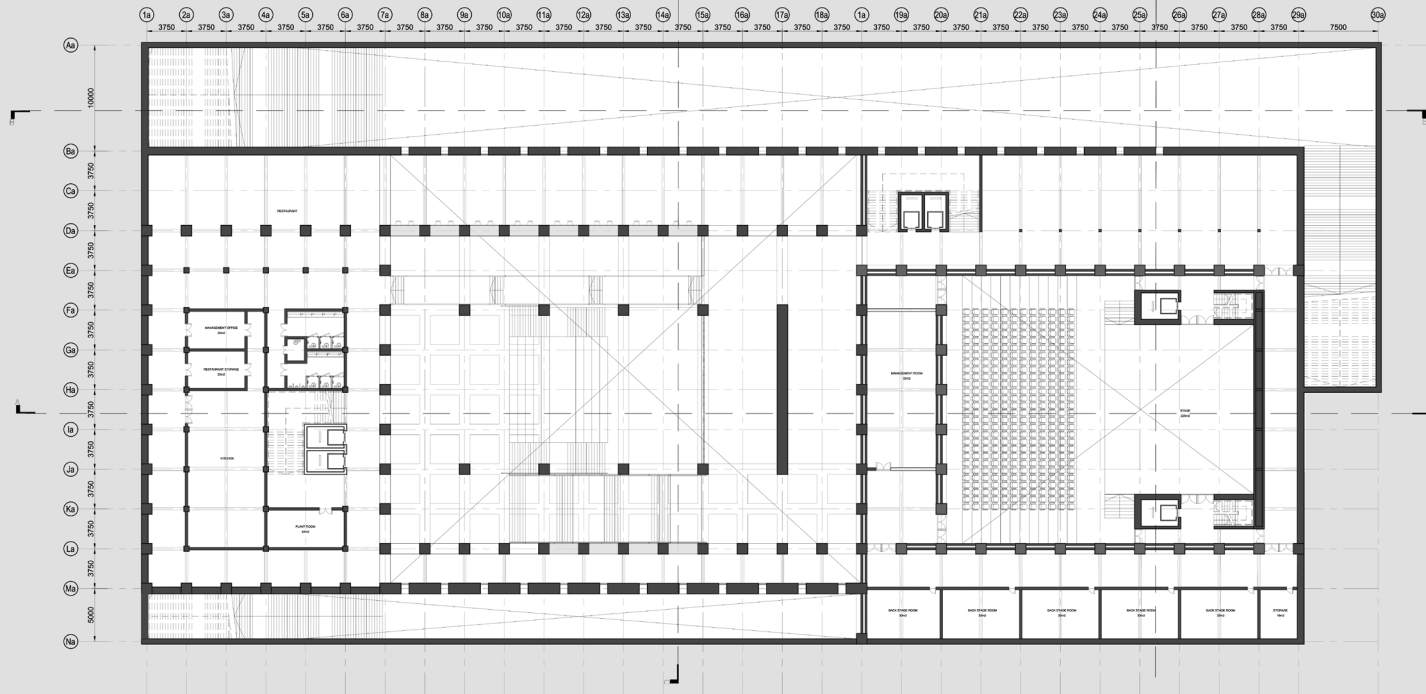
# FLOOR PLANS | EVENT SPACE LEVEL (LEVEL -4)



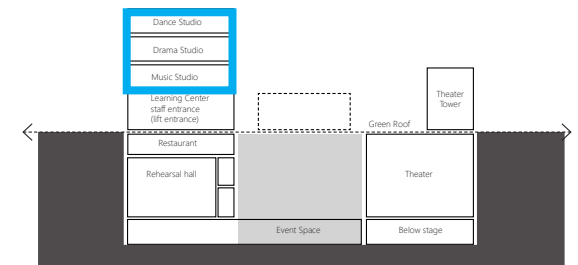
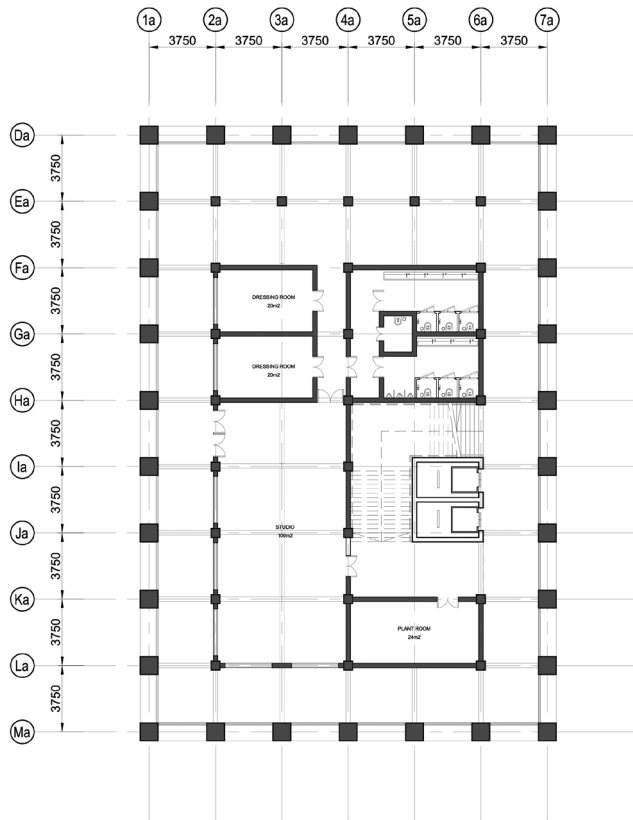
# FLOOR PLANS | OPEN LIBRARY LEVEL (LEVEL -2)



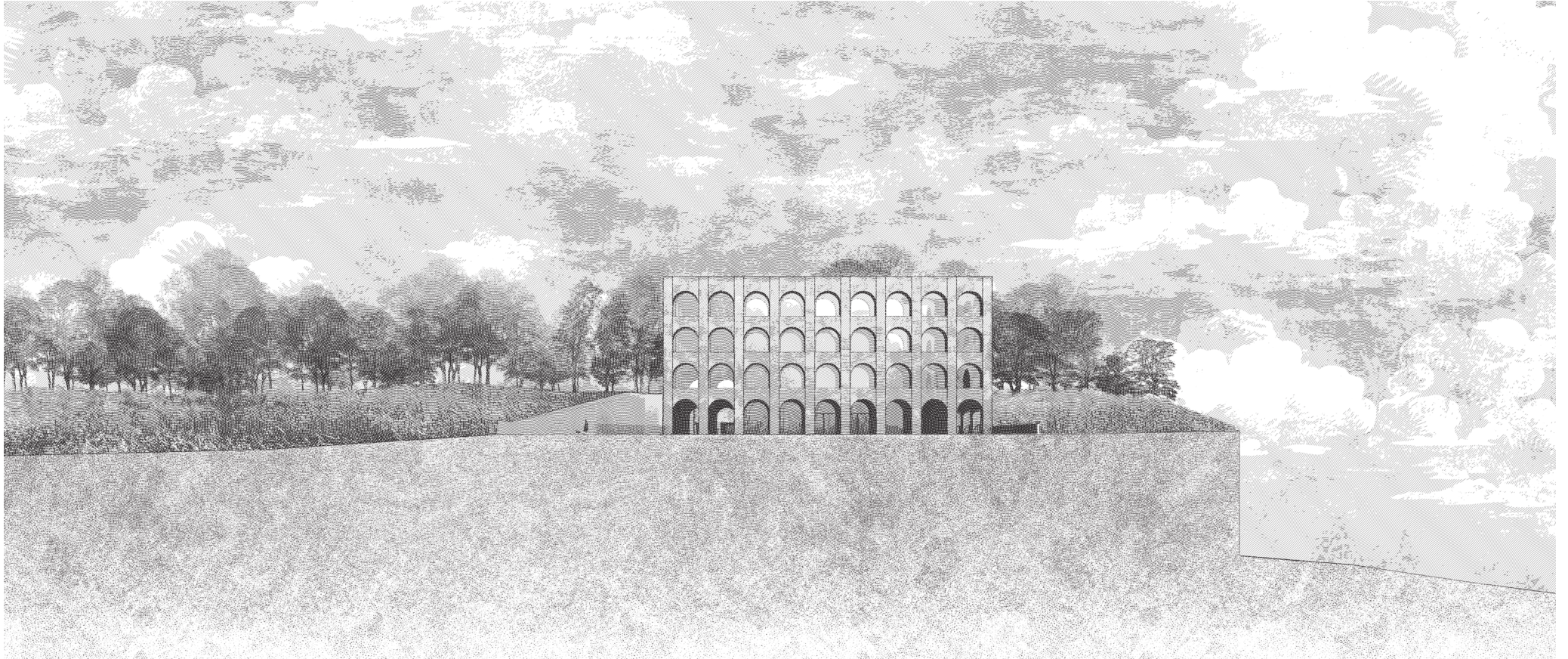
# FLOOR PLANS | RESTAURANT (LEVEL -1)



# FLOOR PLANS | STUDIO (L2-L4)

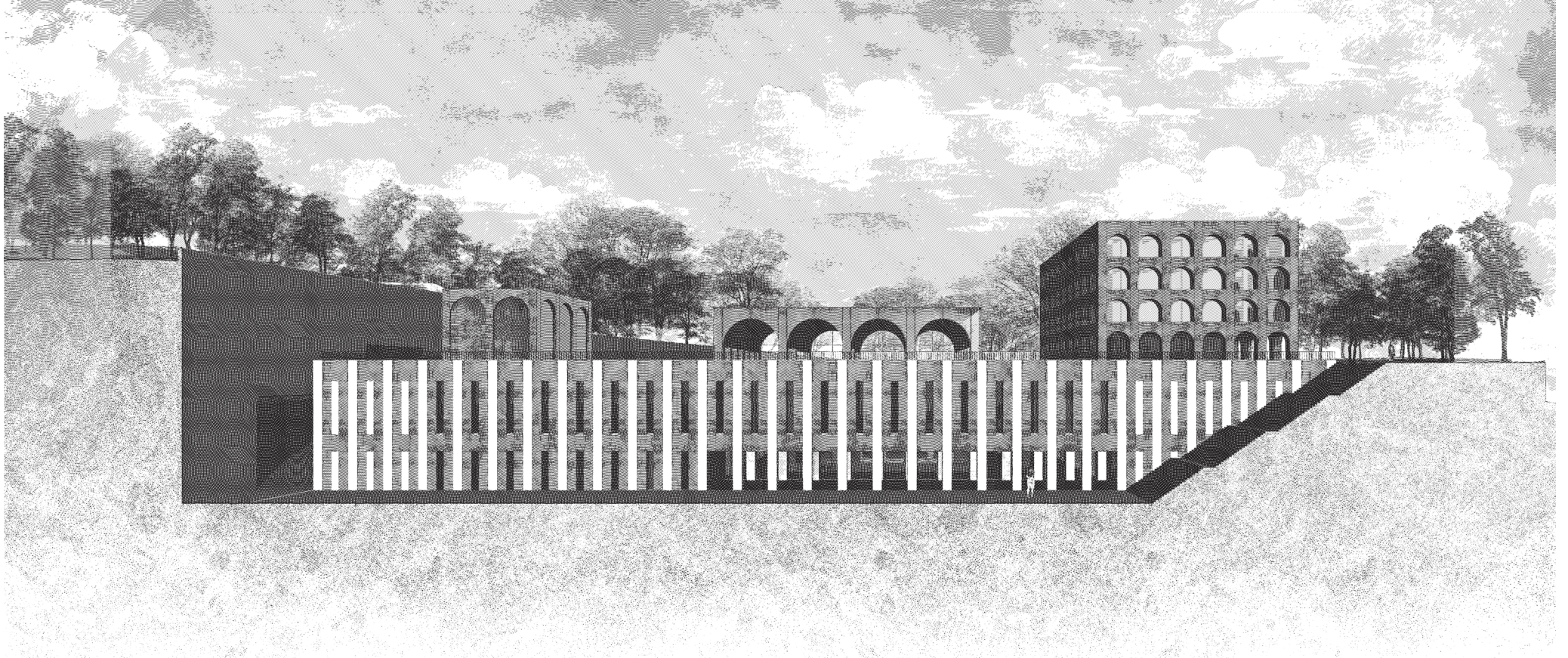


# WEST ELEVATION





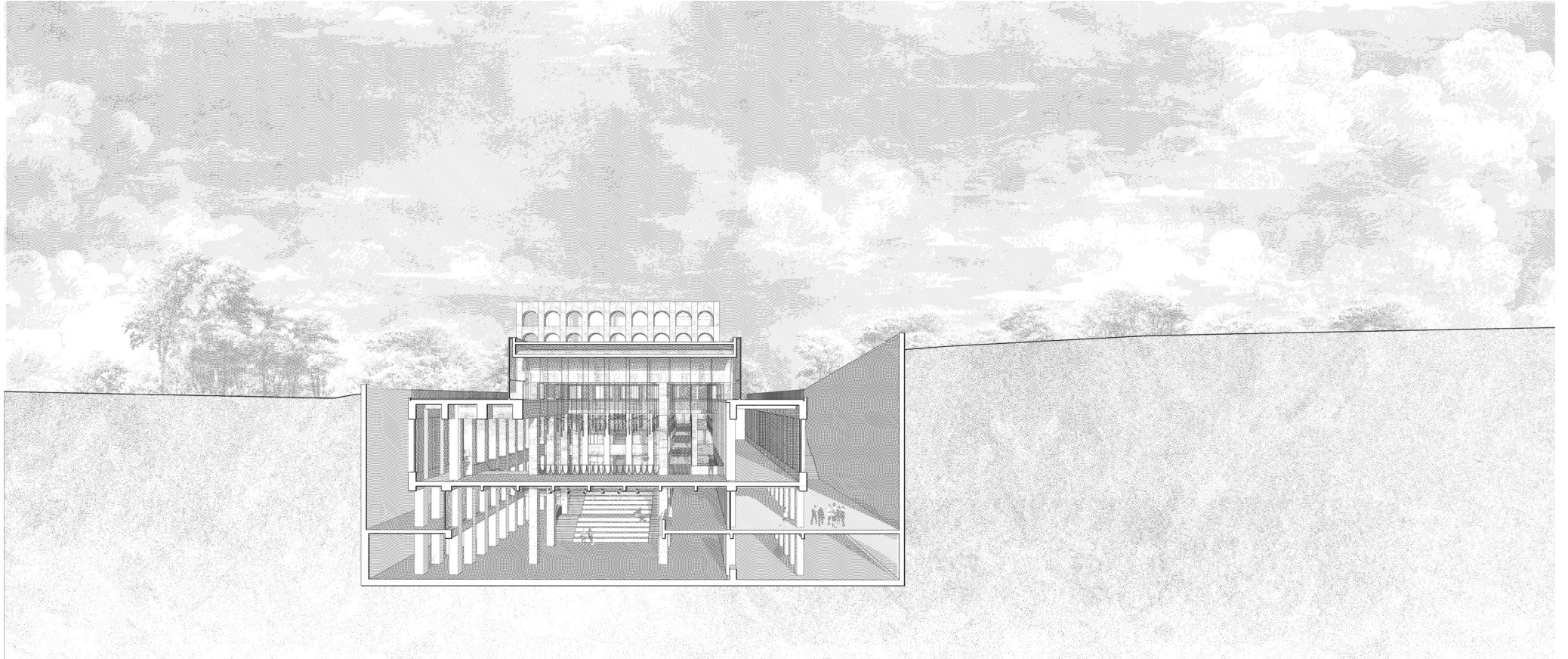
# NORTH ELEVATION



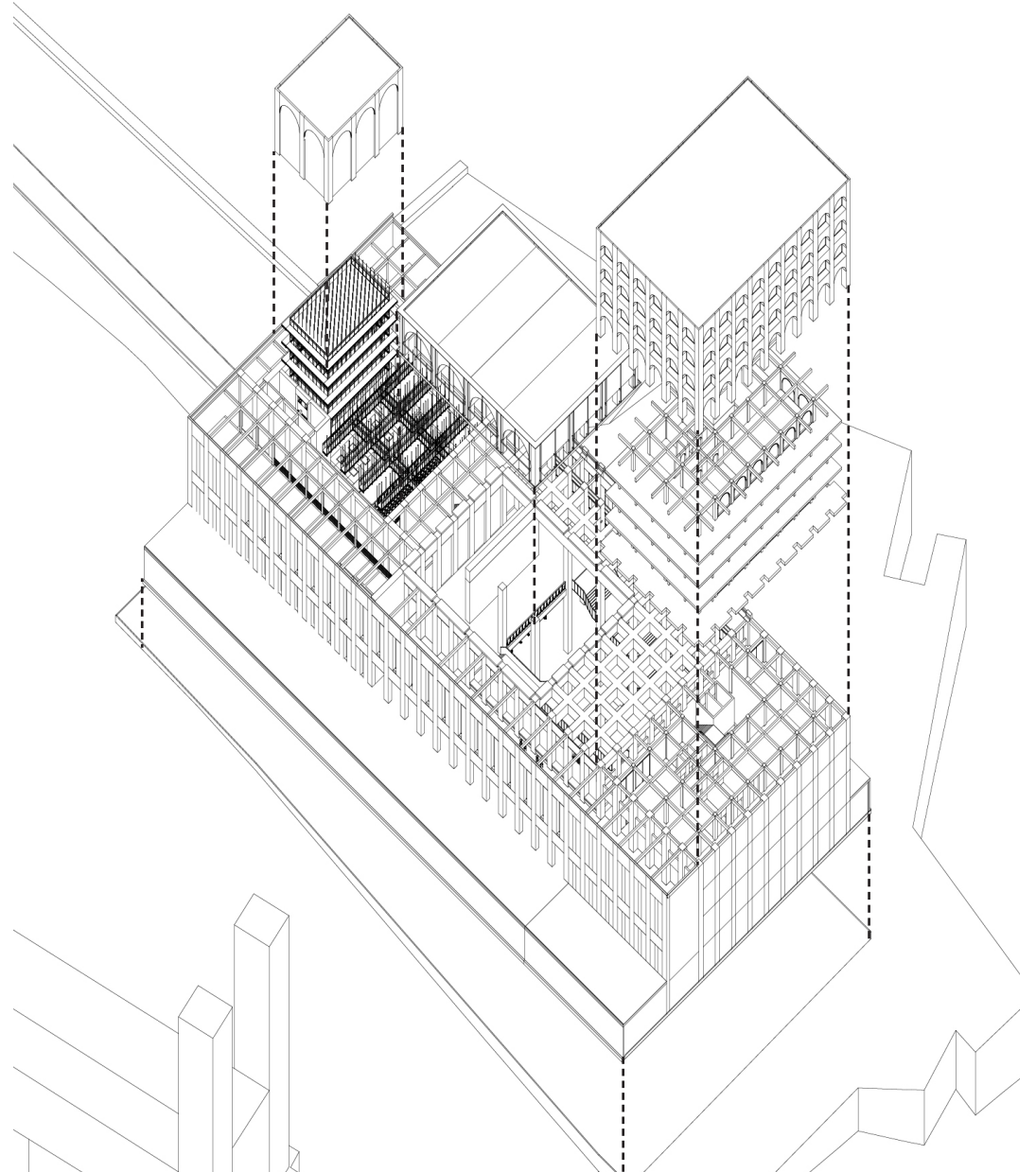
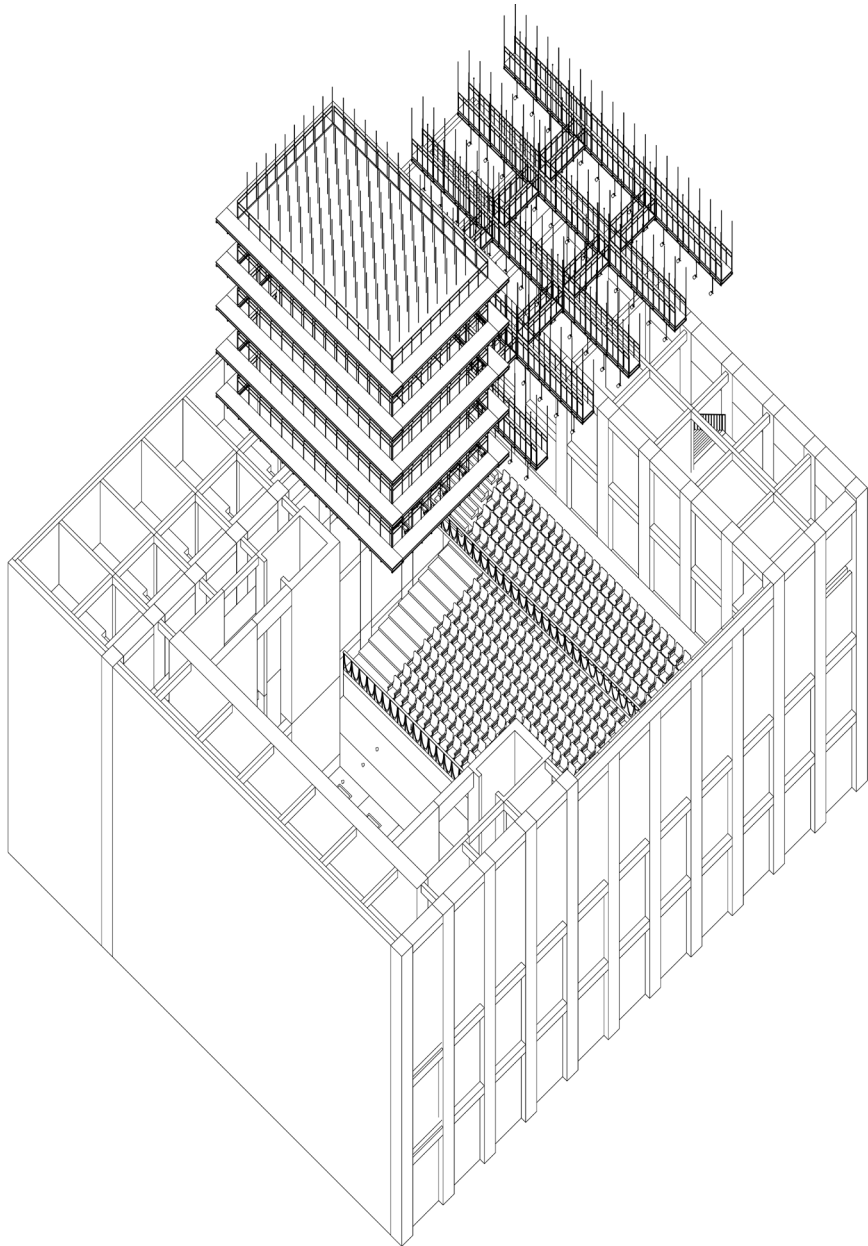
# SECTION



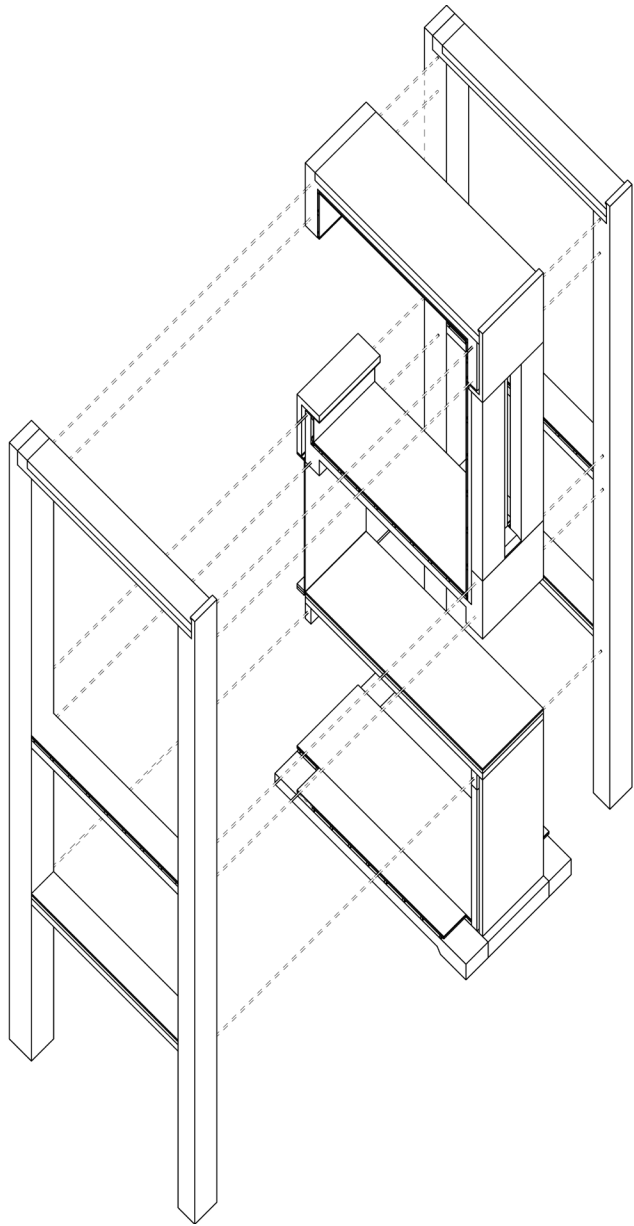
# SECTION



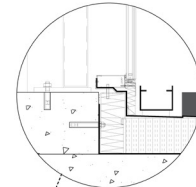
# AXONOMETRIC DRAWING



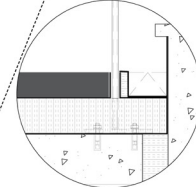
# DETAIL



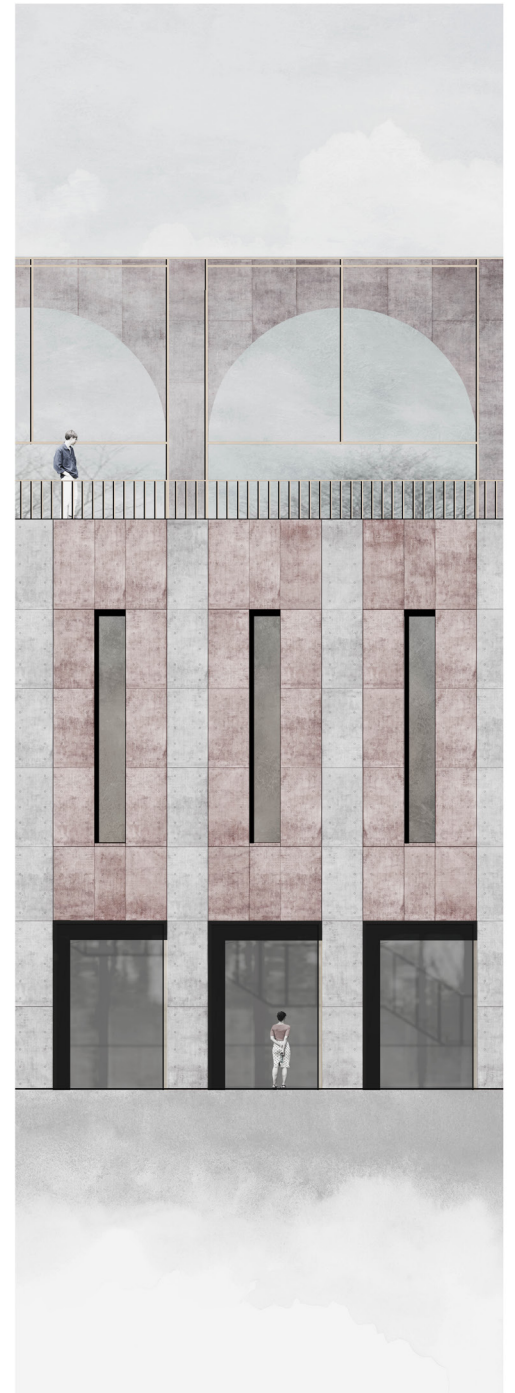
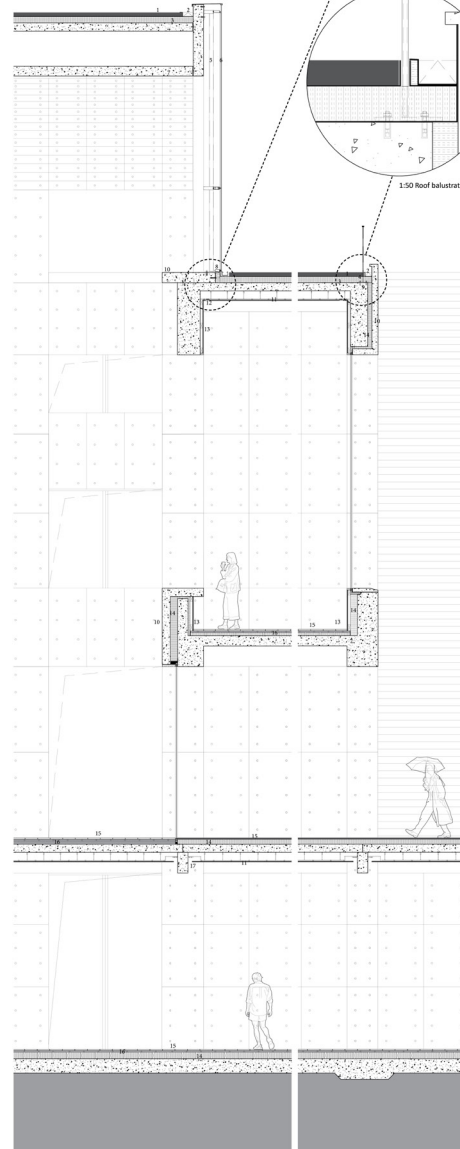
1. Extensive green roof layer
2. Rainwater gutter
3. Foamed glass
4. Protective layer
5. Curtain Wall structure
6. Laminated safety glass
7. In-situ concrete element
8. Aluminum profile
9. Handrail footer
10. Non-structural concrete element
11. Suspended ceiling
12. Air supply
13. Plaster layer
14. Insulation
15. Floor finish
16. Underfloor heating
17. Core lighting



1:50 Detail curtain wall connect to roof



1:50 Roof balustrade Detail



# EXTERIOR VIEW

Ground Level



# EXTERIOR VIEW

Ground Level



# EXTERIOR VIEW

Ground Level





# INTERIOR VIEW



# INTERIOR VIEW



# INTERIOR VIEW



THANK YOU