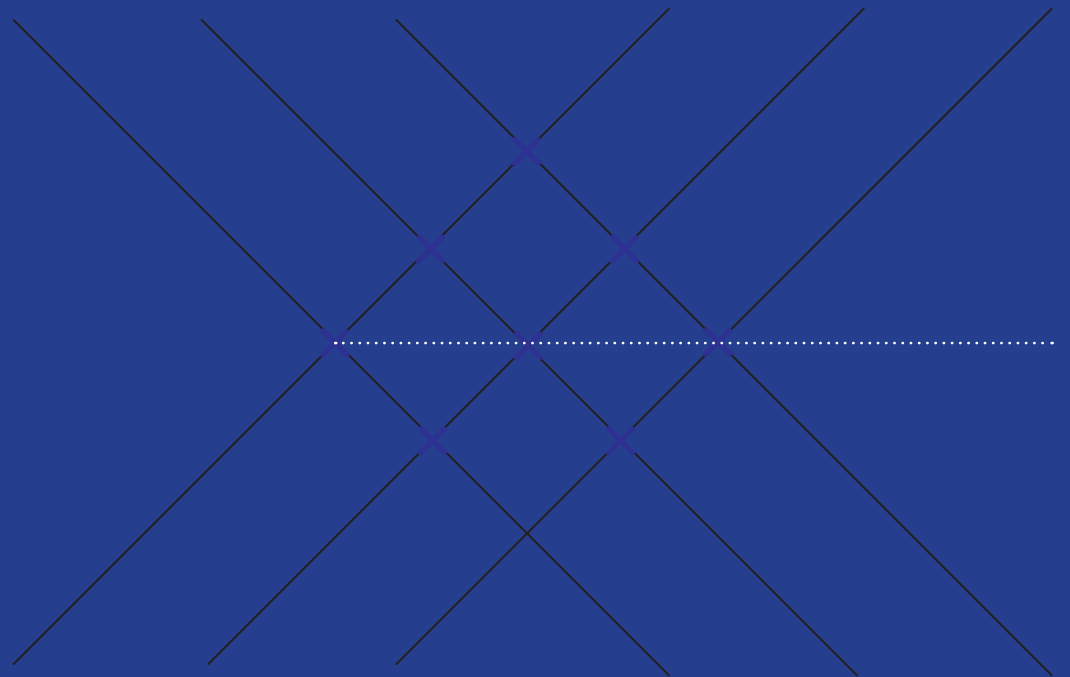
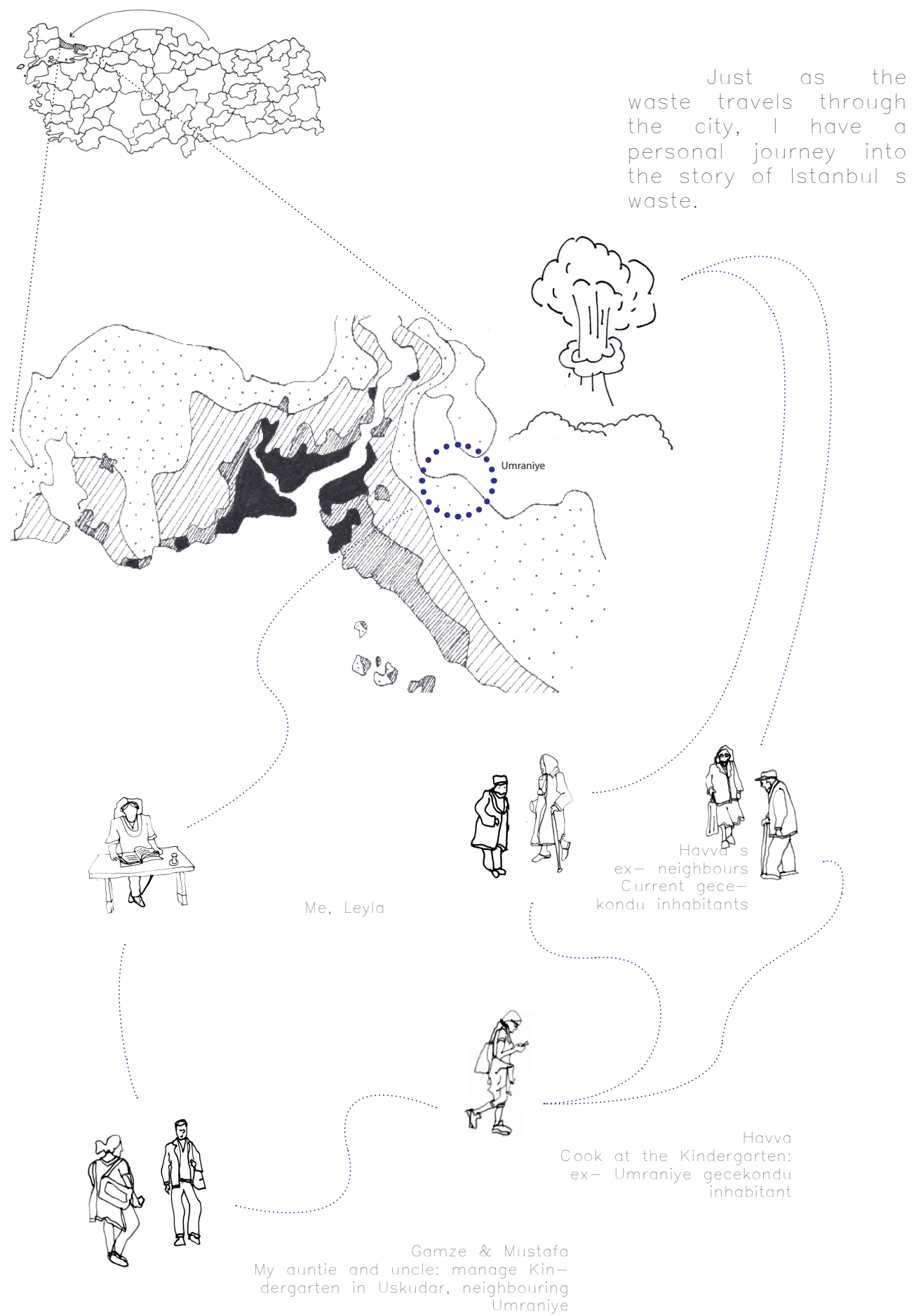
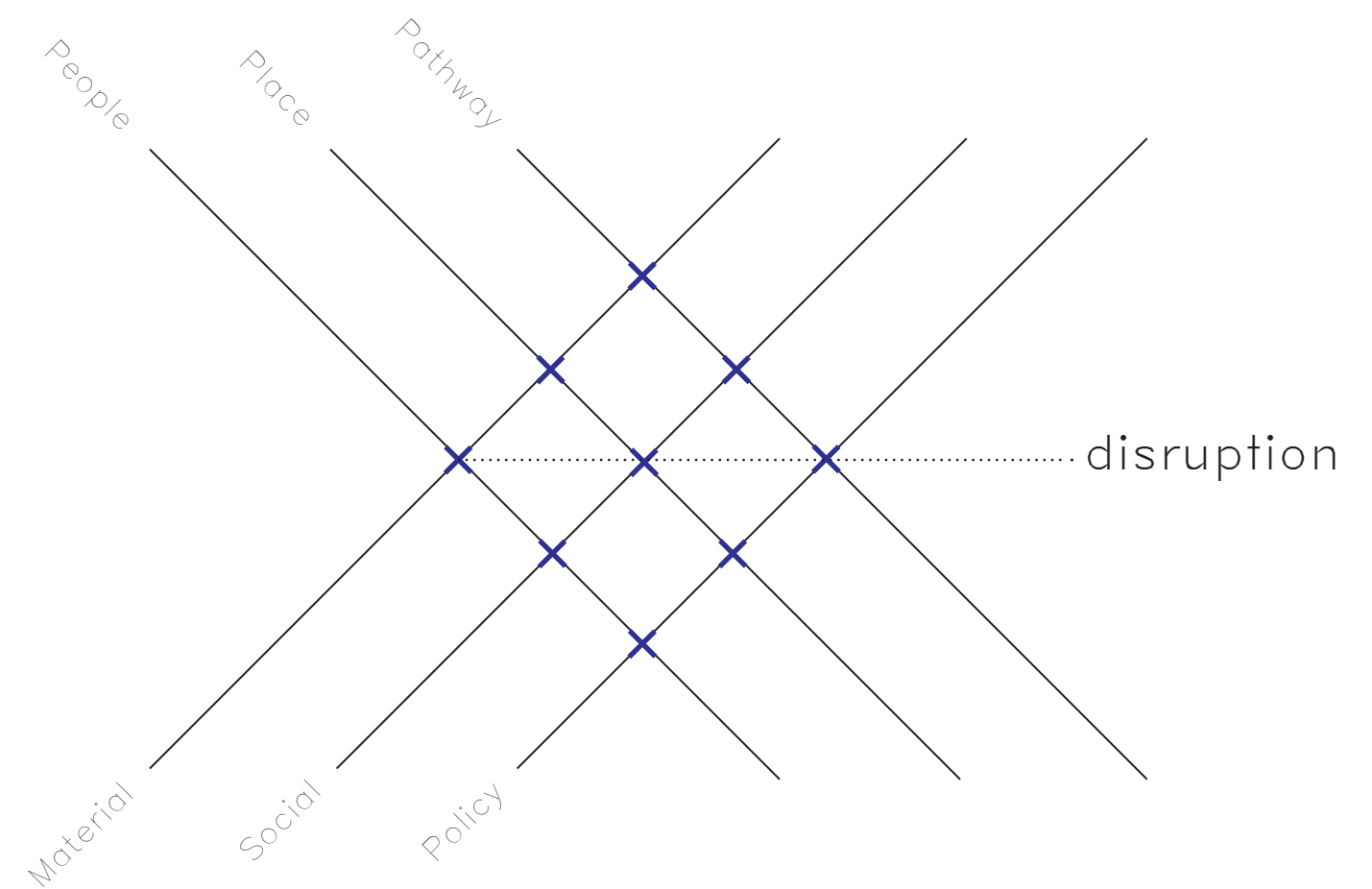


Process Logbook



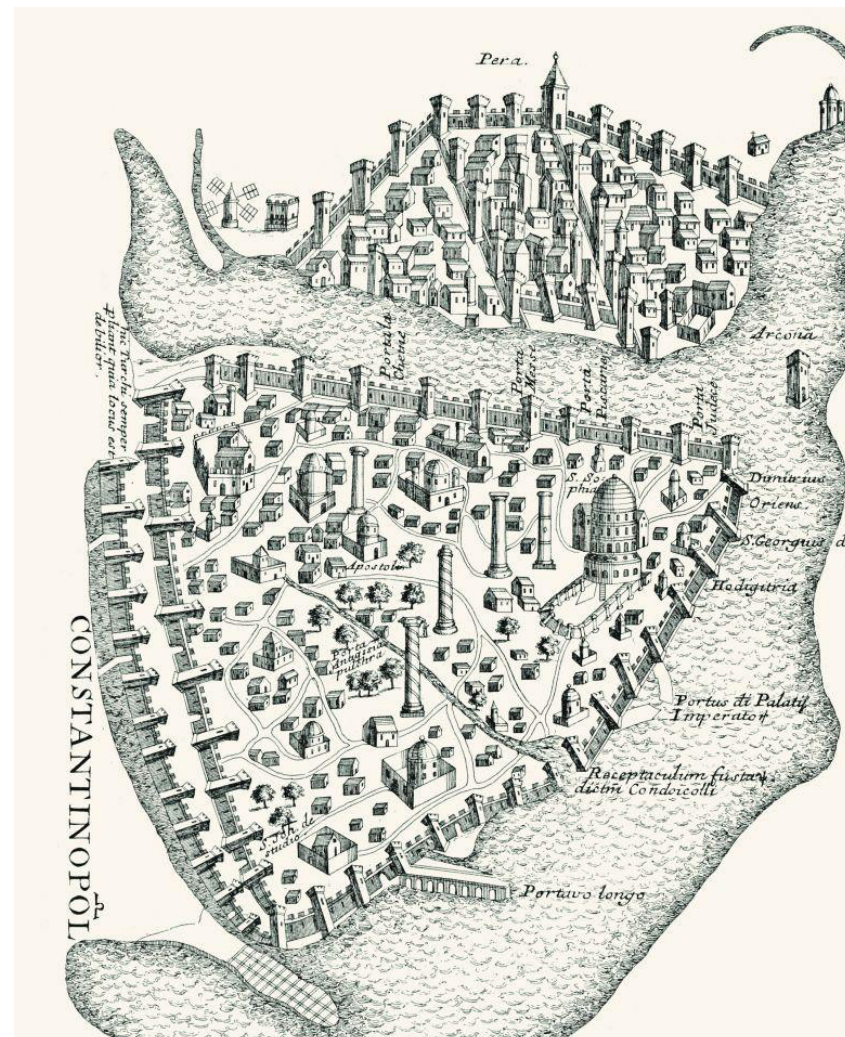


Journey into Research



Weaving of Actors
Weaving of Histories
Weaving of Programmes

Istanbul has historically been portrayed as a Walled City.
A container of Imperial 'Jewels'.



Walled City

However, it exists more complexly as a weaving of marginlands.

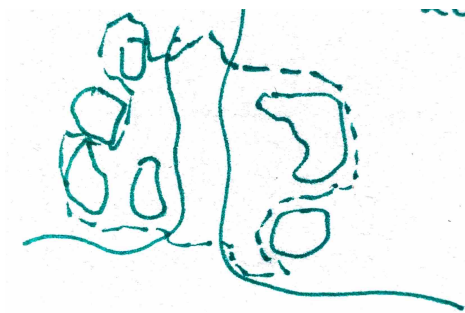
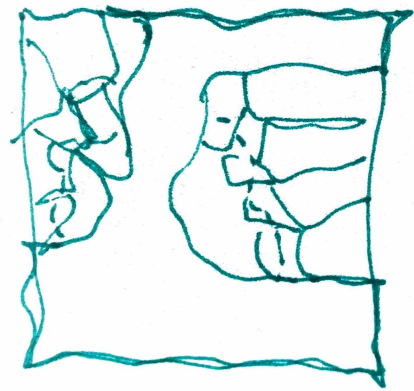
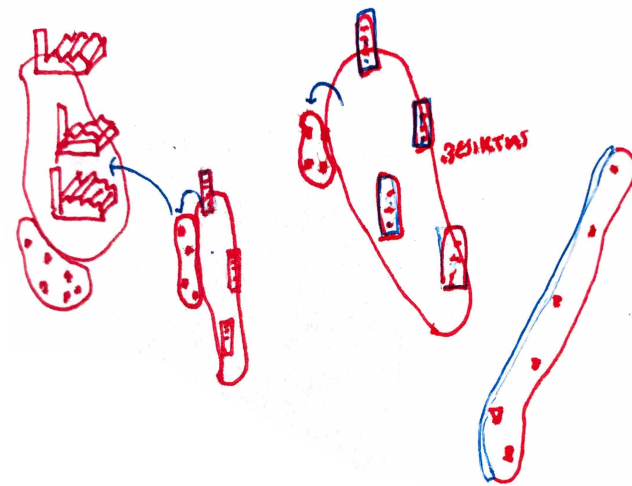
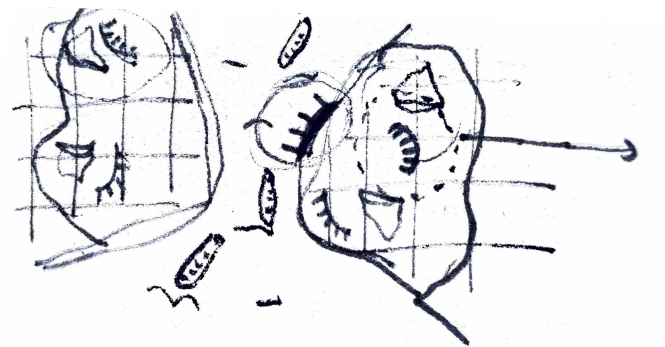


I am interested in the margins of the city — which have been
swallowed by urban sprawl.

Marginlands: interstitial inner-city thresholds. Where people,
objects and places wait in latency for imminent transformation.

Or... City of Marginlands

First attempts at mappings proved that understanding such margins and intensities was only possible through walking such spaces with those living within the margin.



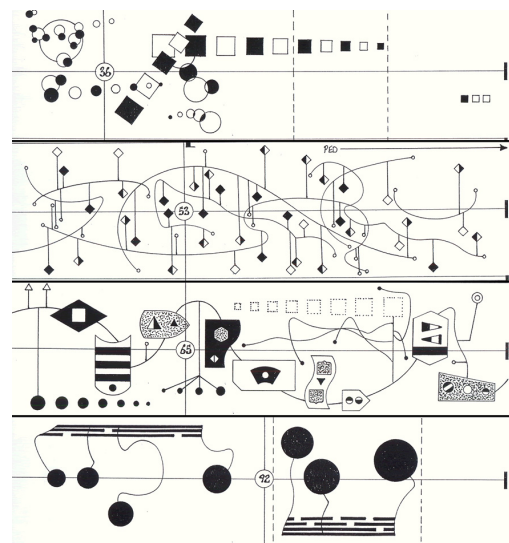
city sequence of....
ADDITION / SUBTRACTION



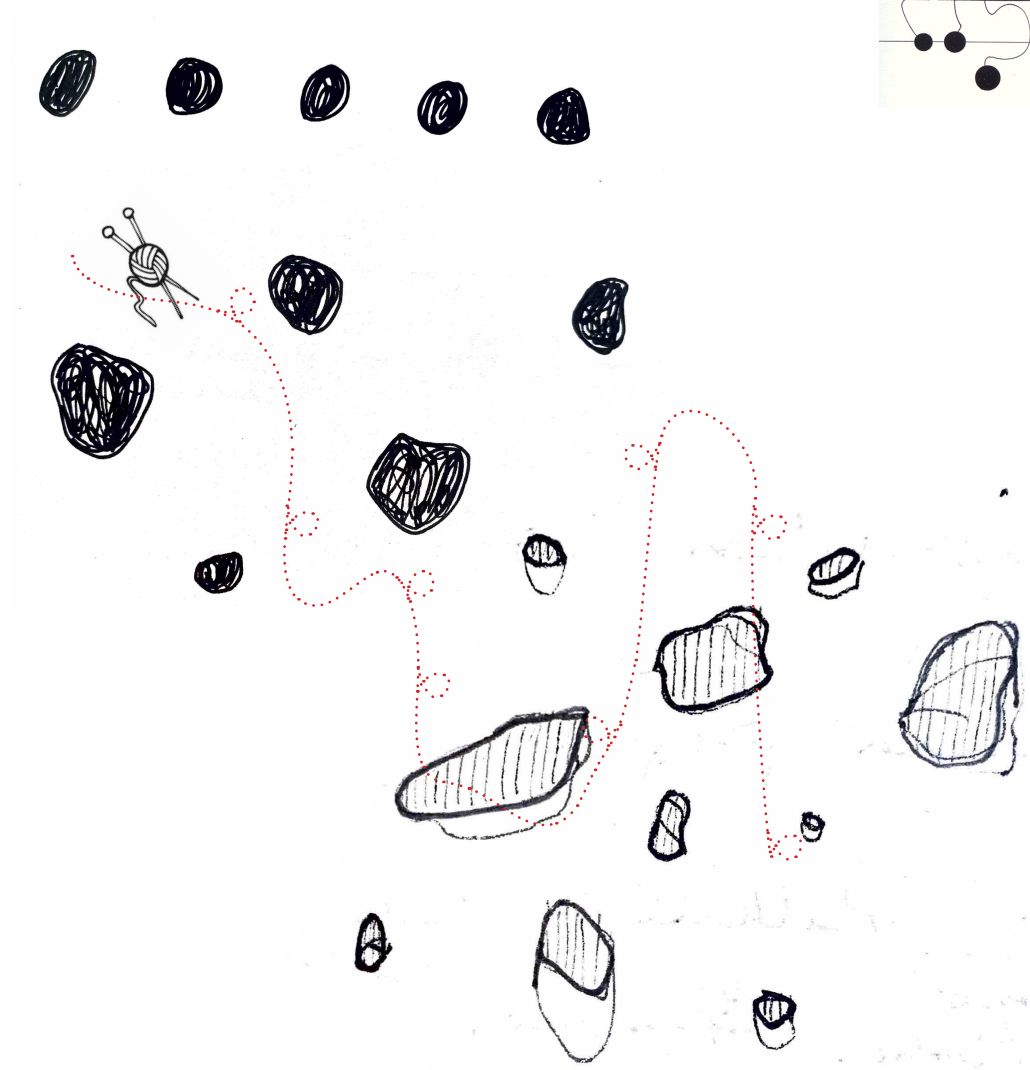
City as Patchwork of margins and intensities



City as Weaving of margins and intensities



Mark Applebaum



My project looks at working within the hidden margins, invisible from the eyes of the city

Searching for the hidden cavities



.. Existing as Discards // Relics

Within the margins, informal happenings occur such as sitting on the street to drink one's tea, extending one's balcony for the extra flowerpots, and pinning up flyers to advertise textile work.



City of Informal Happenings

However, municipal powers are attempting to erase such activity through relentless hyper-commodification, where the destruction of the marginlands makes way for luxury retail and high-rise residential.



City of Rampant Destruction

Alongside this detraction, the government programme of the Millet Bahçesi, or 'People's Garden', is paving the former marginlands with sterile lawn, a far cry from the Commons it promises.



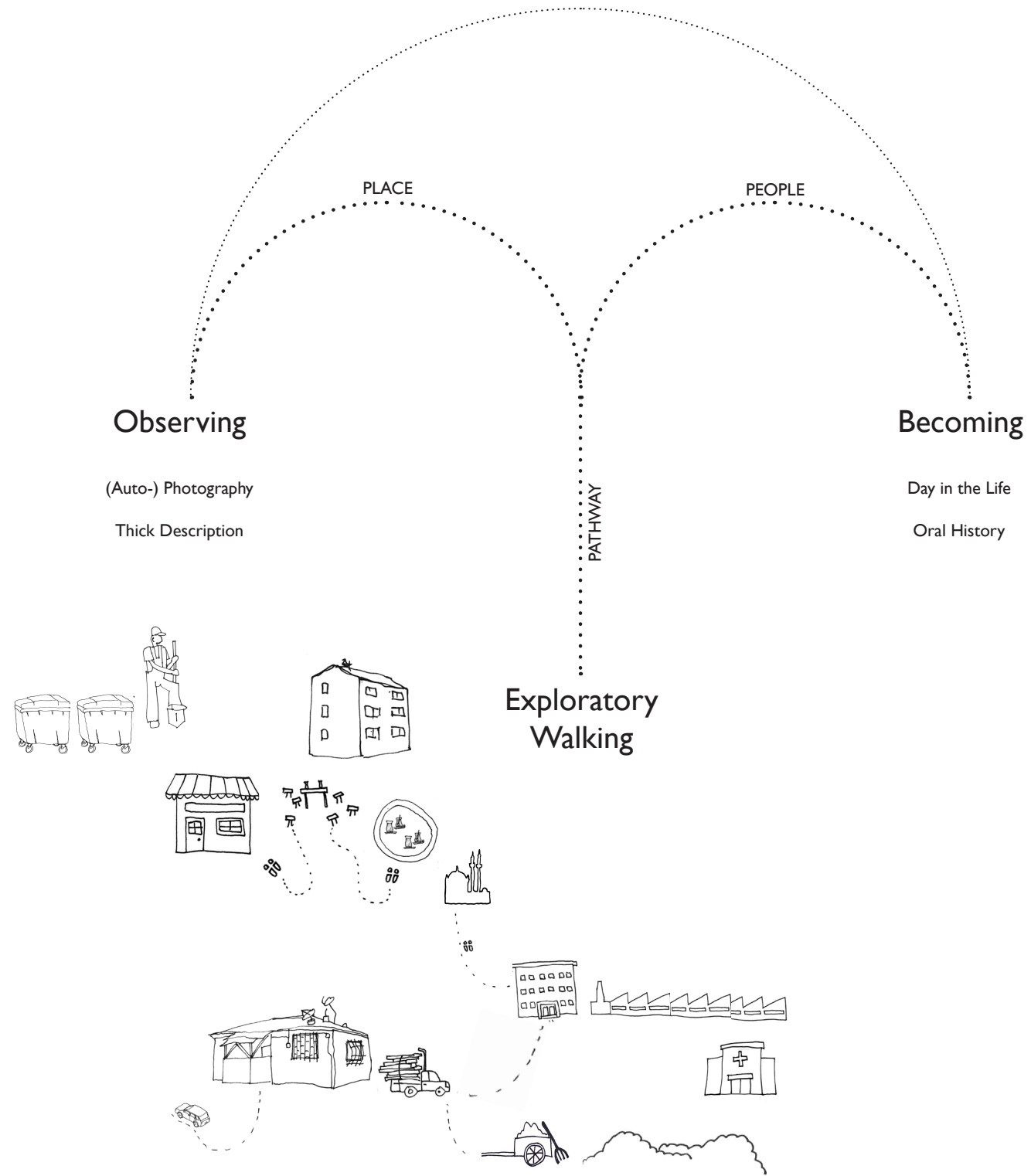
'People's Garden' of Turkey



Can only be described as a ...
Hyper-Commodification of public space
Leading to the...

Loss of the commons

Methodology



See Gleaner Logbook for more on Omer!

Entering the Margin



Human waste Surplus Dirty
Polluted Throwaway
Residual Stinky Leftover
Trash Garbage Discarded
Junk Filthy Contaminated
Unwanted Impure Uncontrolled
Unregulated

Wasted human Other Illegal
Untouchable Bandit Unsafe
Unclean Dangerous Thief Underclass
Unskilled Infected Improper
Outcast Unhealthy Marginalised
Criminal Illiterate Scavenger

Wasting of Material
of Place
of Landscape
of People

Who protects against this?

How can I position myself within this context?

How can I disrupt the system to privilege those
in the margin?

Focus on 'Wasting'



Omer

Street Gleaner



Ali

Moat Gardener

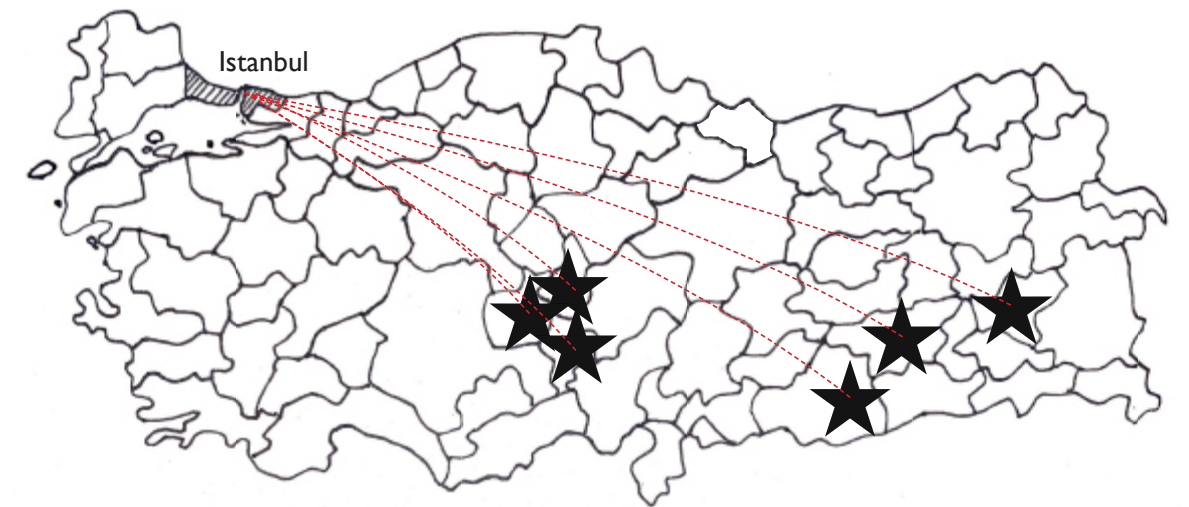


Ahmet

Last Inhabitant

This takes me to the guardians each arrivals in the city with strong kinship networks of care helping them land into their common practice. They al exist within the relics of former structures e.g. construction / wall / housing

- They are connected by their practice of care for the land and carving out a space for their activity within the margins



Back to the margins..each of these guardins also has carved space within the city fissure of the wall - Although they arrived at different periods, from different parts of the country based on kinship relations, they is longer history of arrival in istanbul.



See Gleaner Logbook for more on Omer!



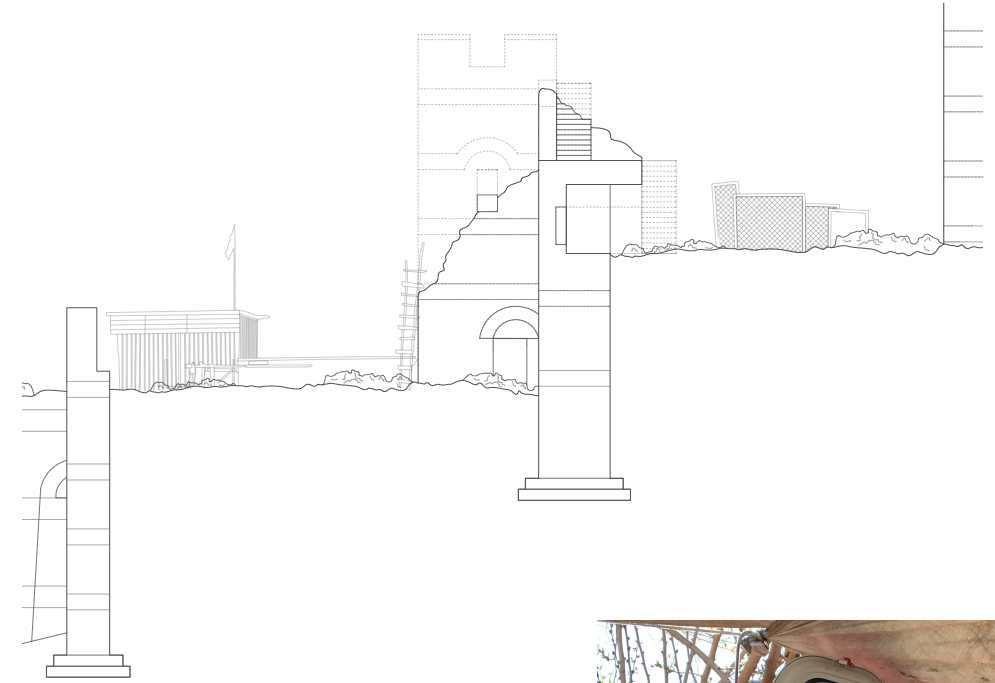
Carving out a life in the relic of an unbuilt construction project.



The Street Gleaner: Omer



See Wall Logbook for more on Ali!



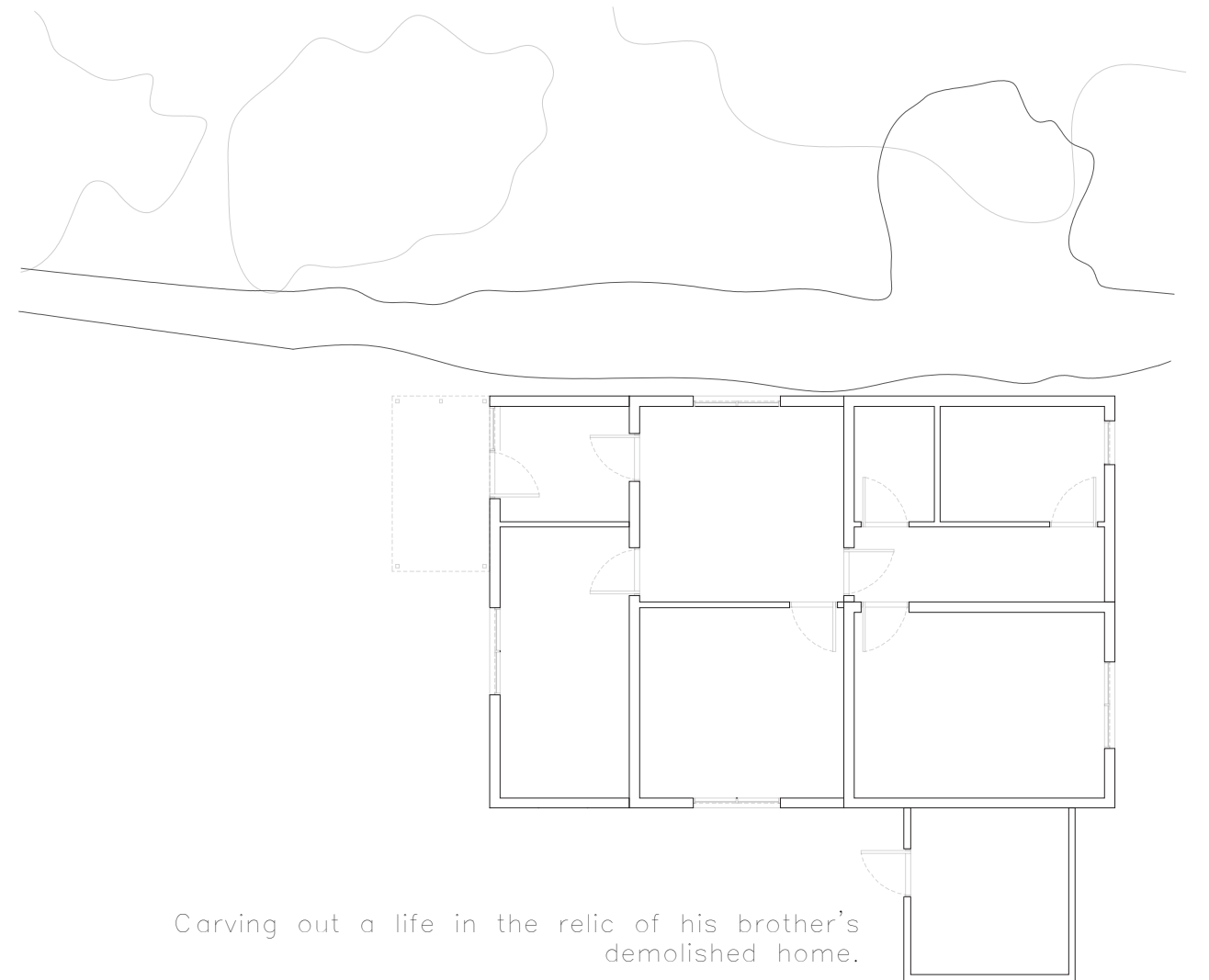
Carving out a life in the relic of
the military defence system.



The Moat Gardener: Ali



See my Honours Programme Project 'Micro-Histories' for more on the Istanbul Gecekondu!



Carving out a life in the relic of his brother's demolished home.



The Last Inhabitant: Ahmet

CONCLUSION

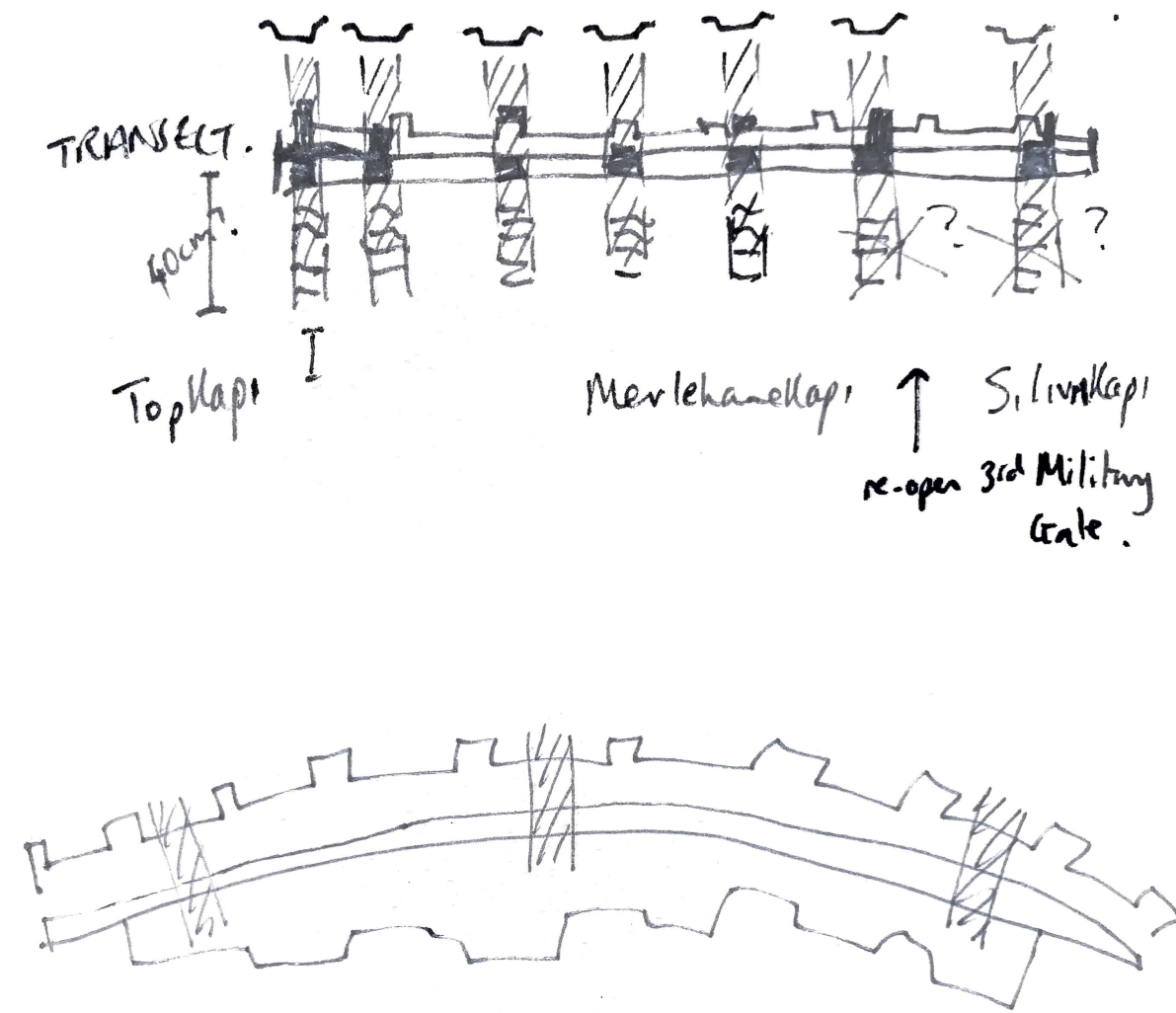
Custodians have carved moments of the commons into the marginlands, acting against hyper-commodification of public space

How can a contemporary commons be developed in the rapidly commodified marginlands?

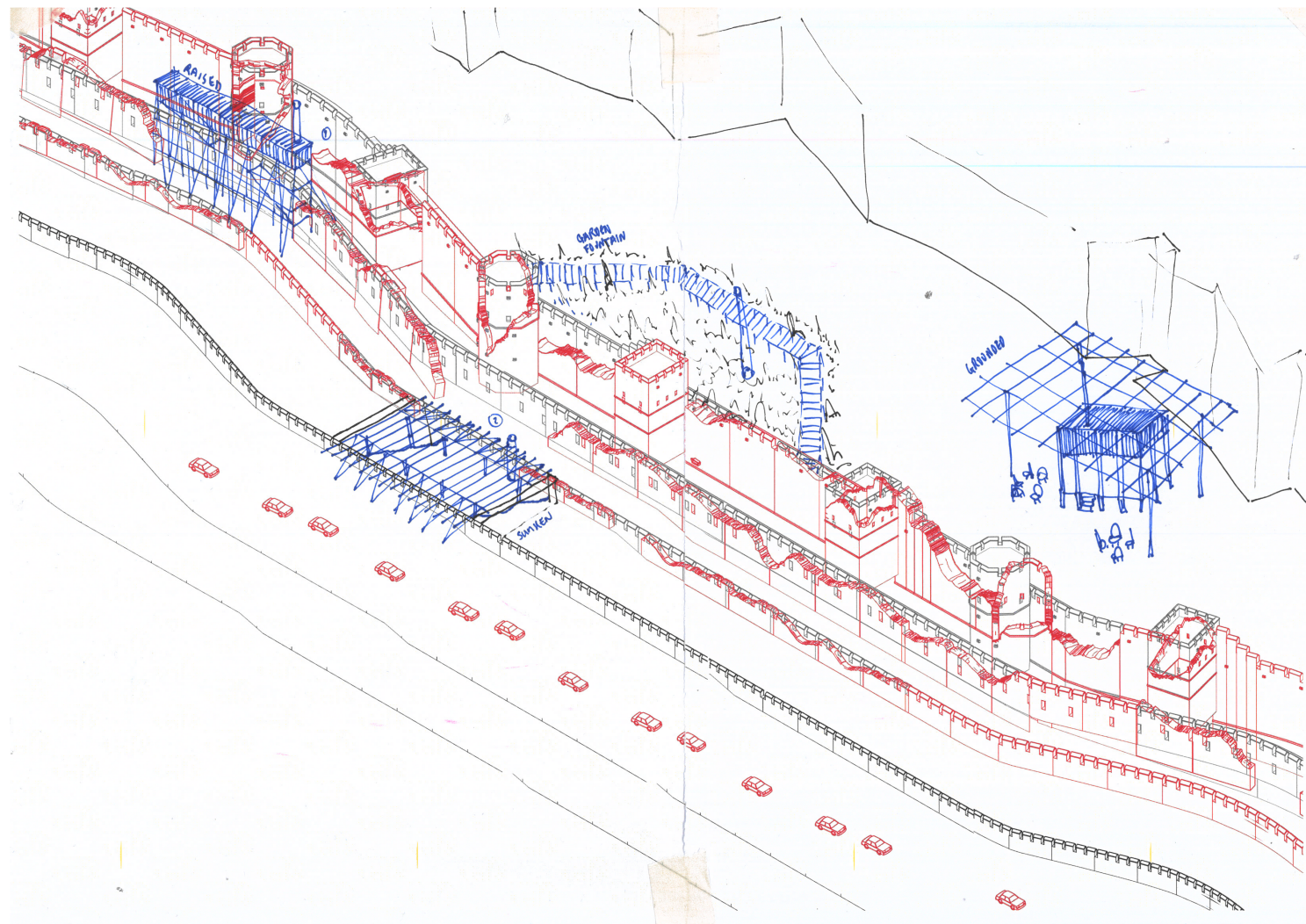
In this context, a focus on the Wall:
the historic margin



See Wall Logbook for more on the Wall!



Connected Intensities along Wall



BLACK

RED

BLUE

HISTORICAL

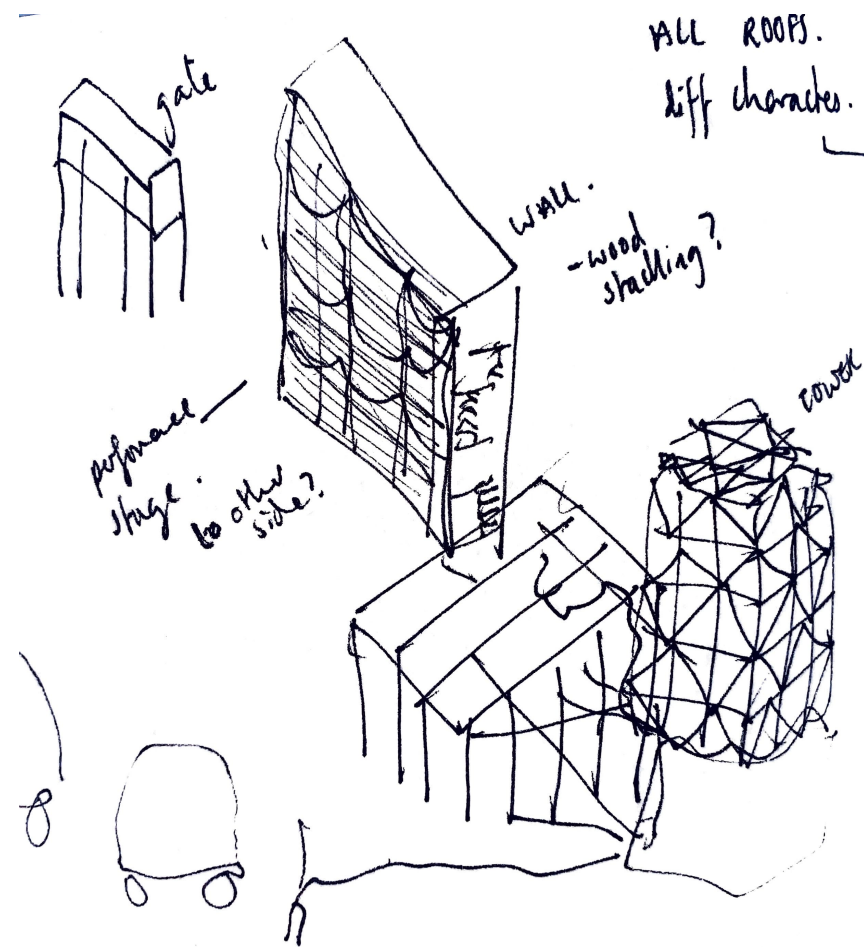
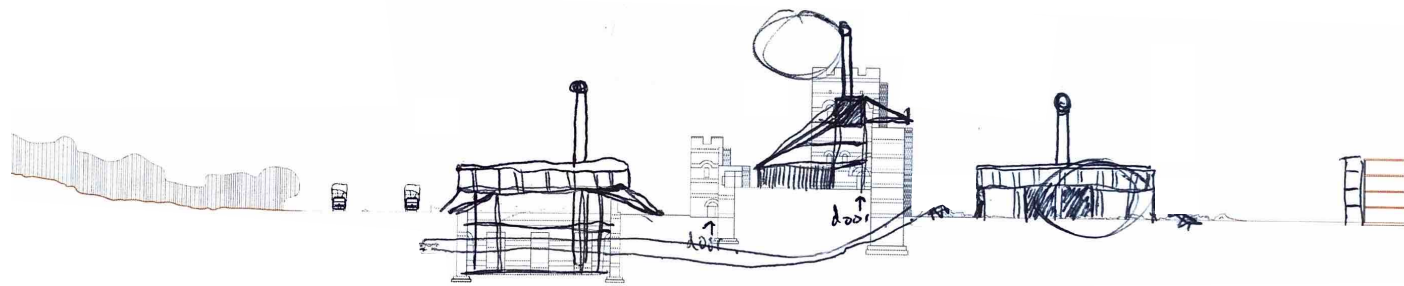
CURRENT

FUTURE

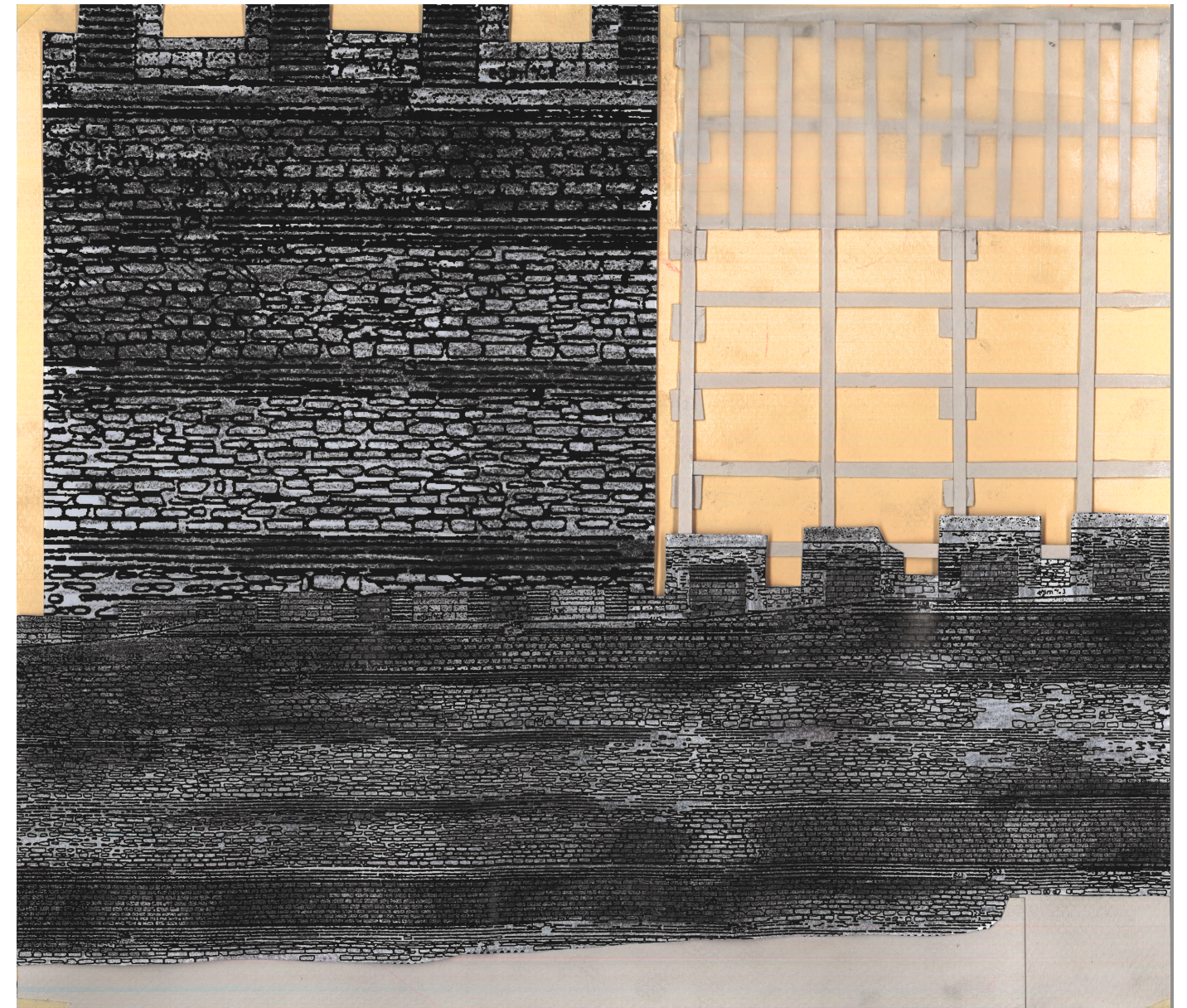
Series of Timber Scaffoldings



..Promoting a Re-texturing



Spectacle.
views from.



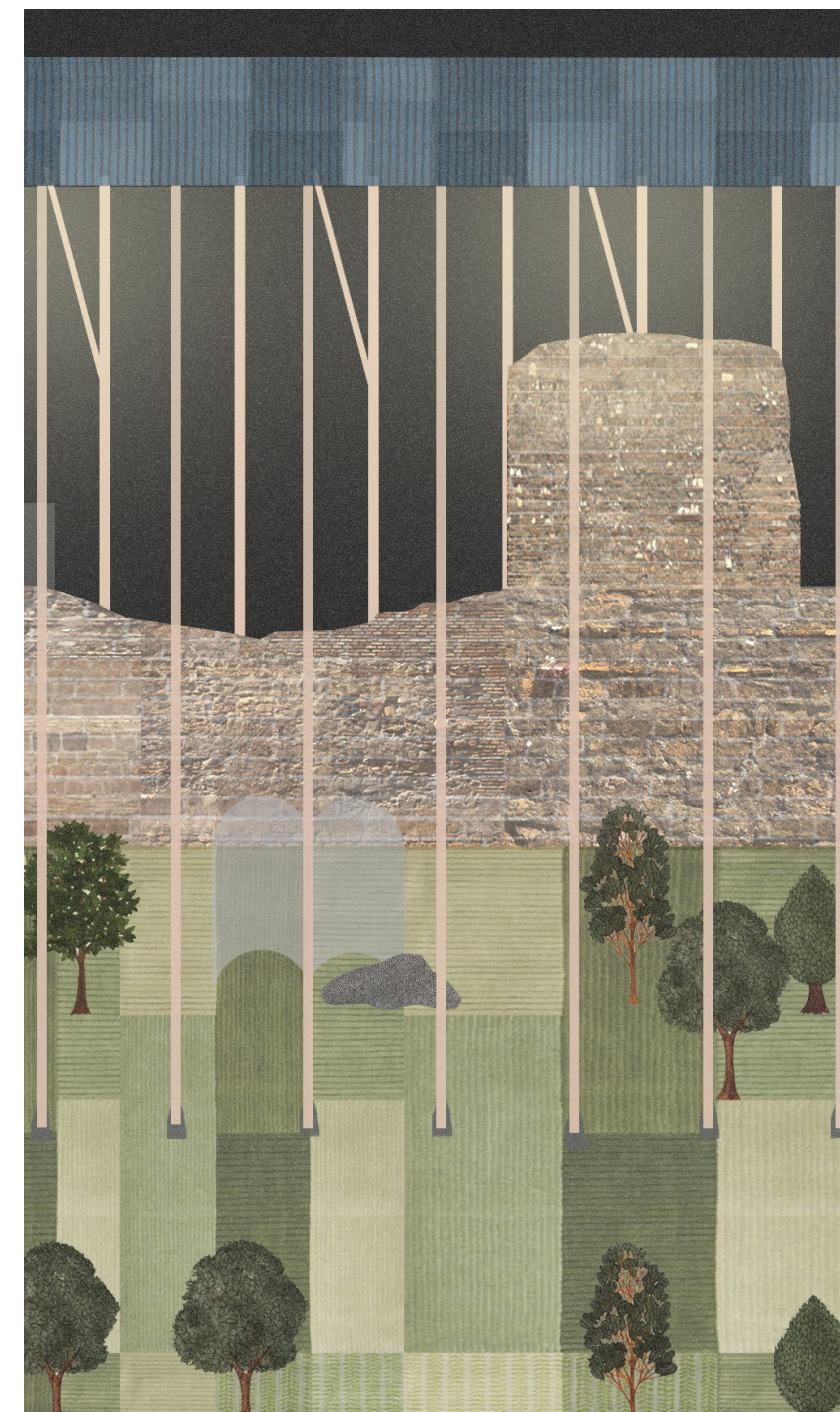
Lightweight facsimile



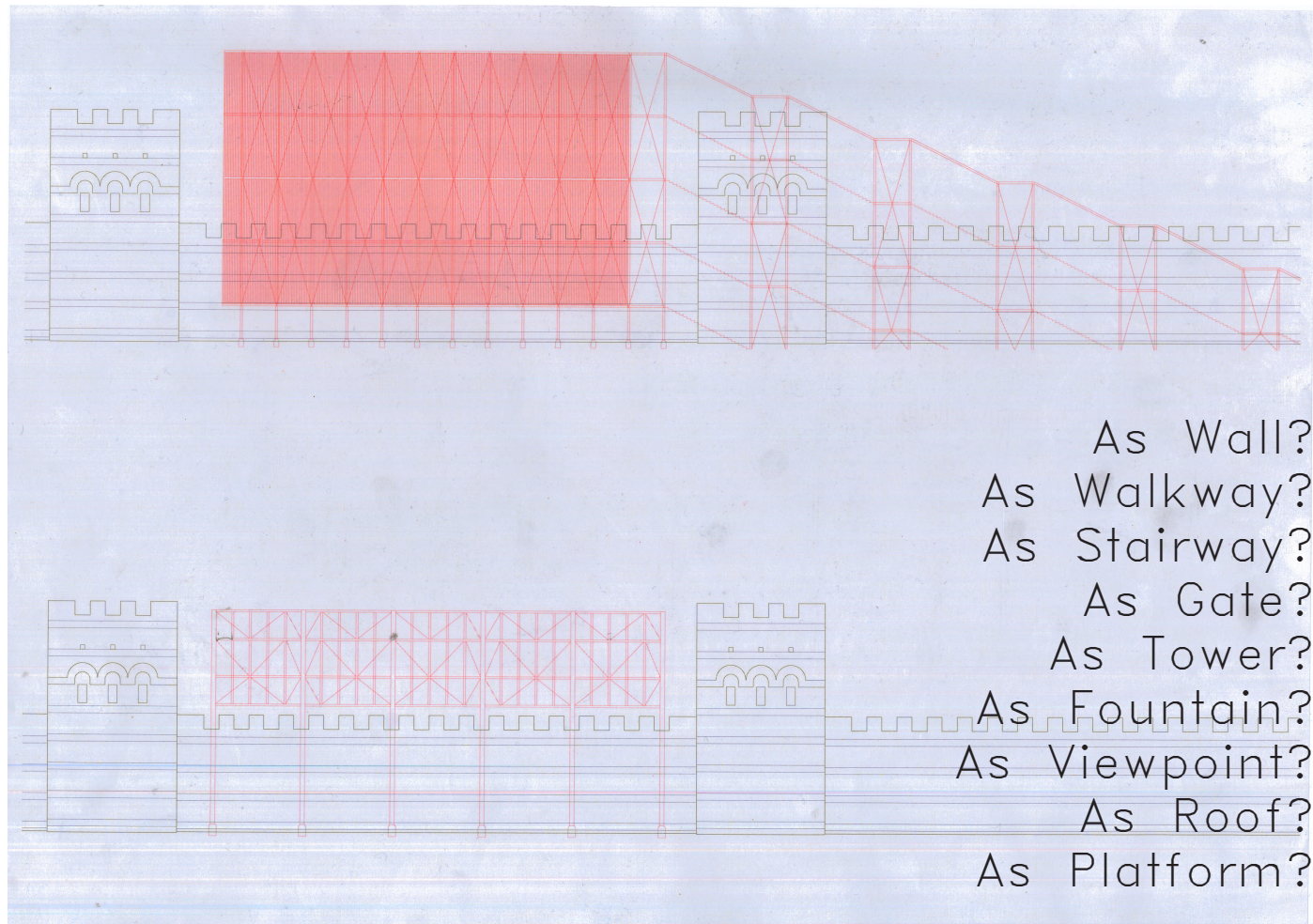
PATHWAY.



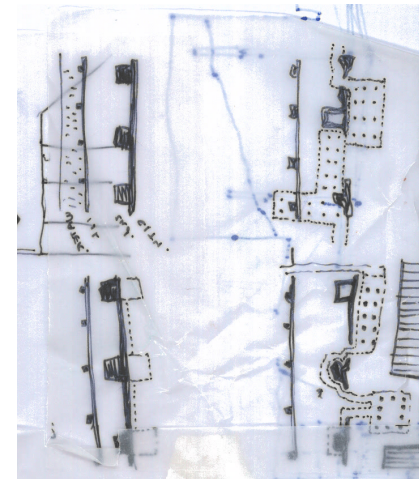
Scaffolding as Amenities



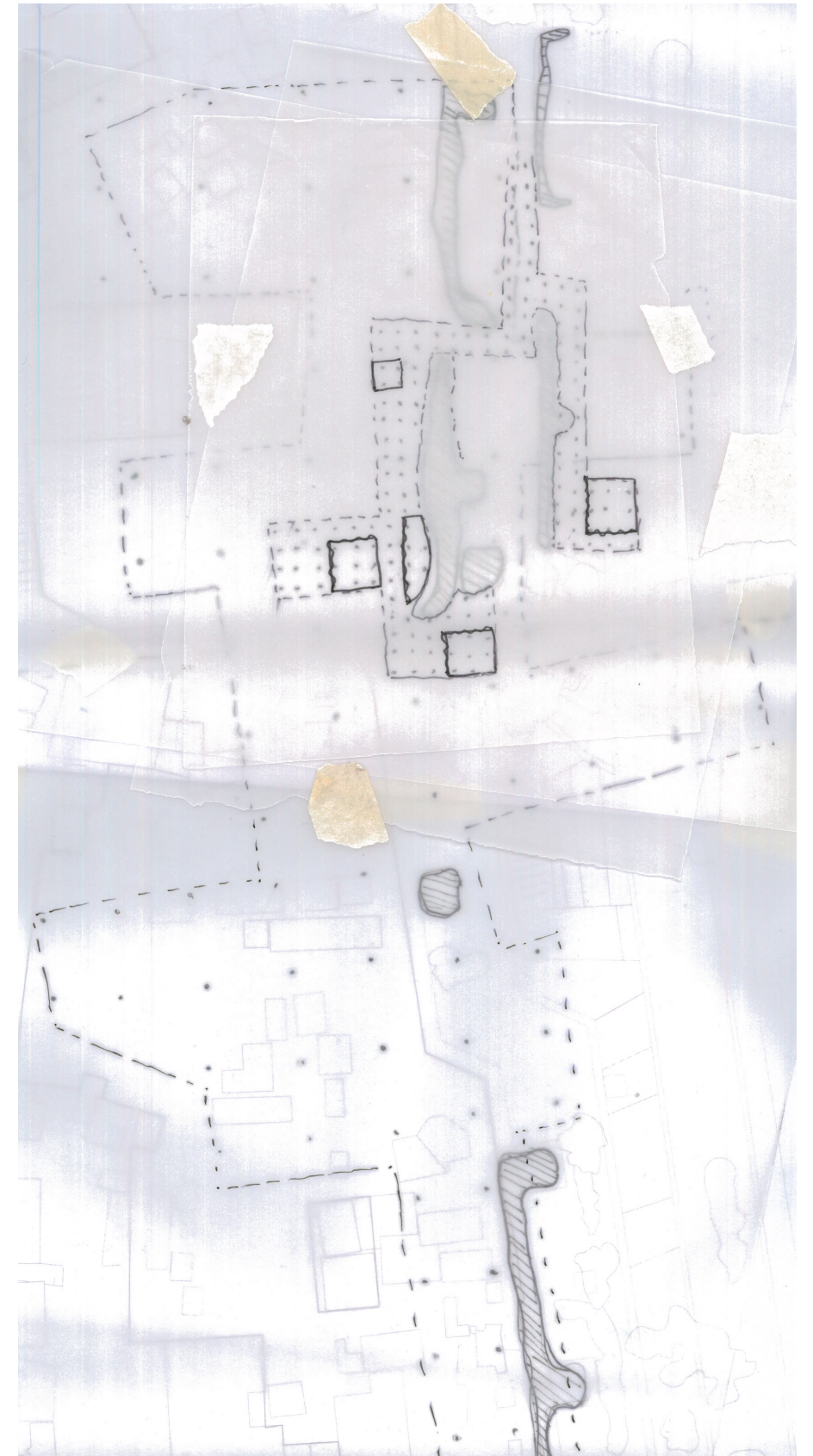
Scaffolding as Protector



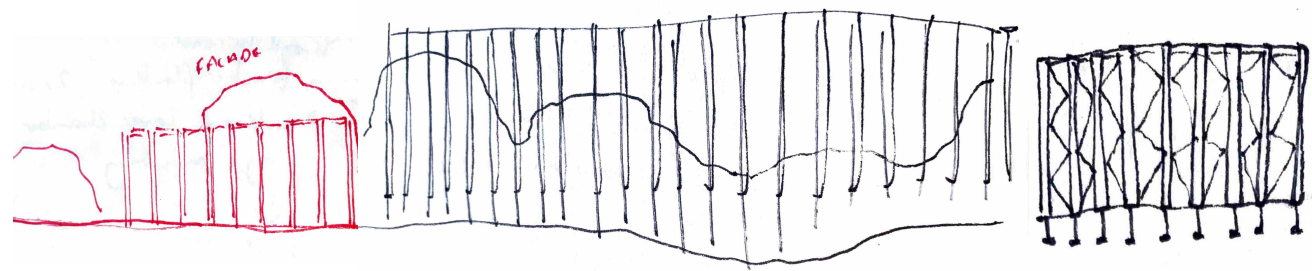
A Timber Scaffold



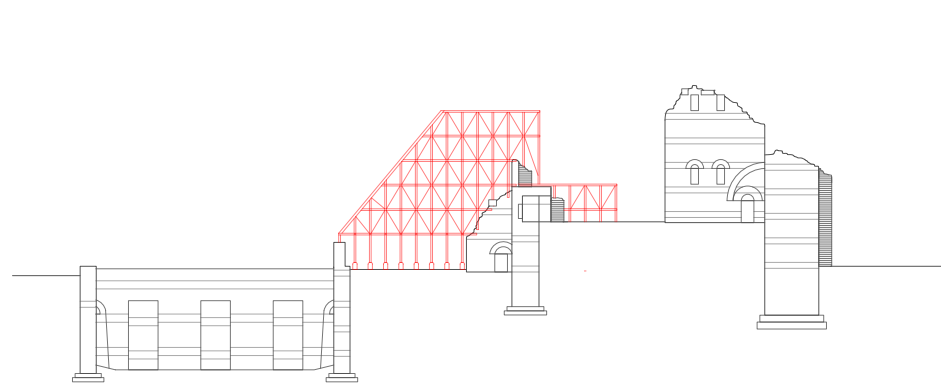
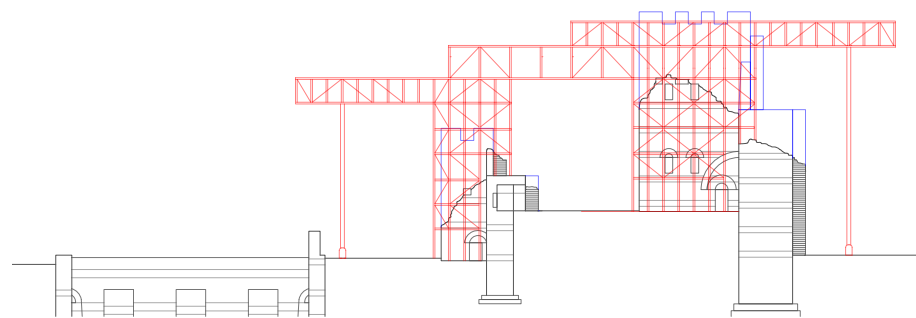
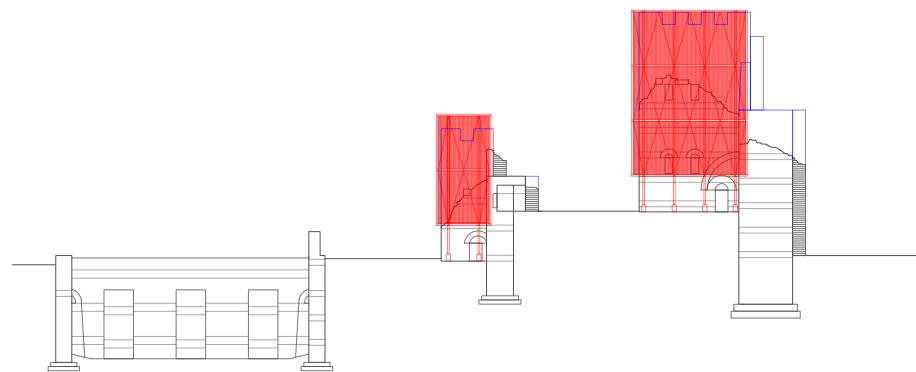
Moments of enclosure?
 Perimeter Roof?



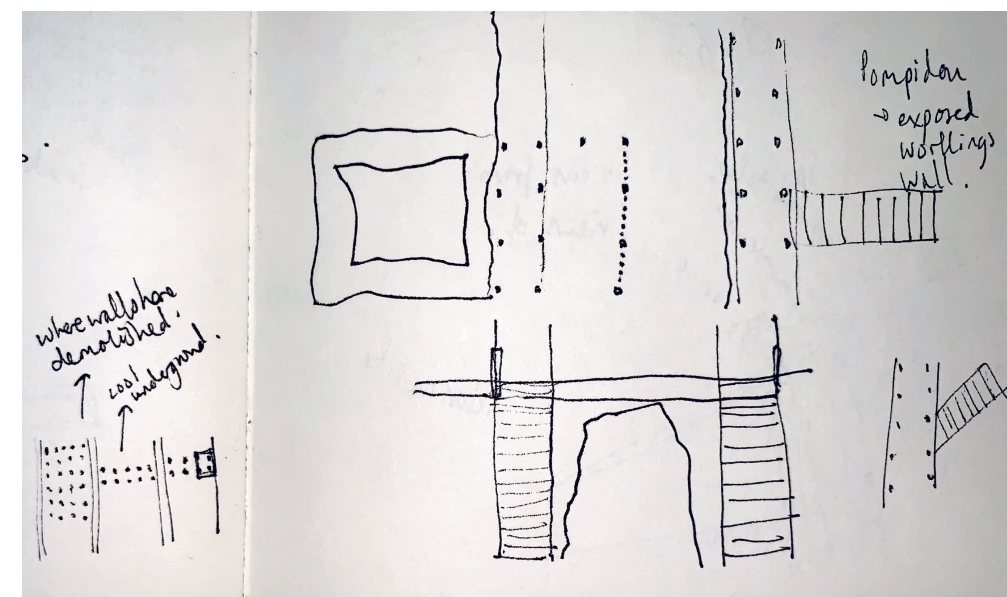
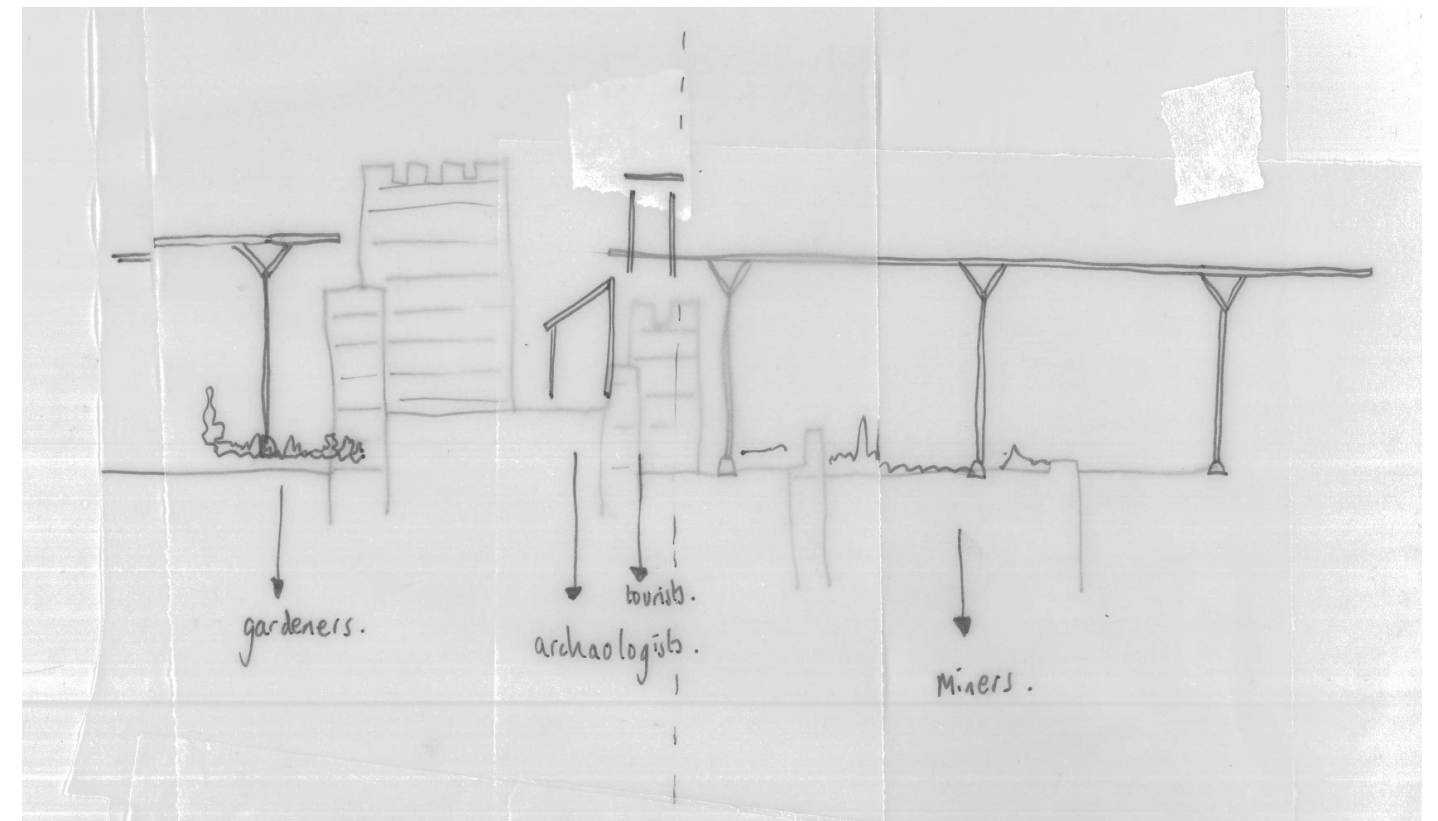
A Connected Walkway



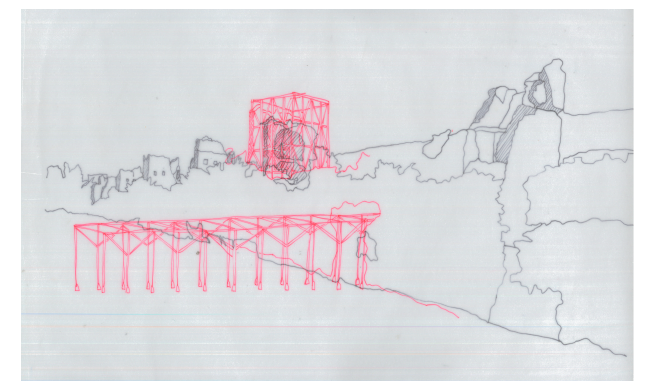
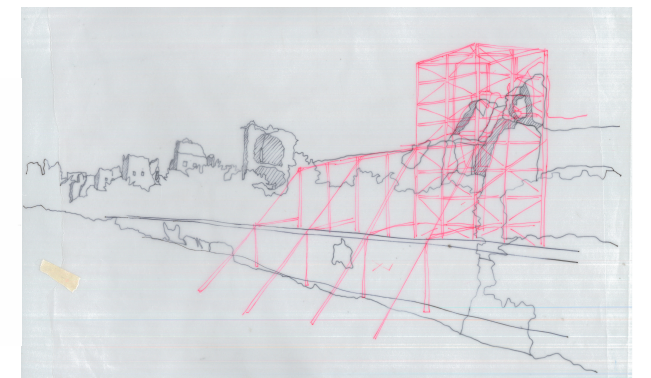
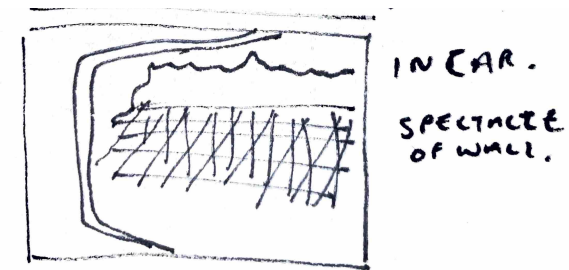
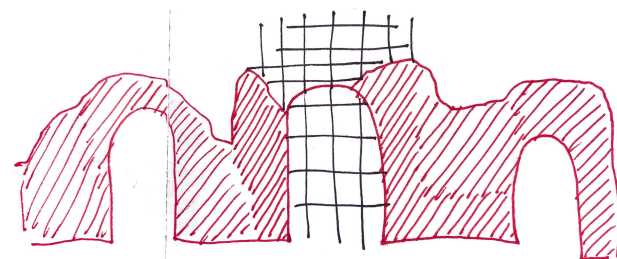
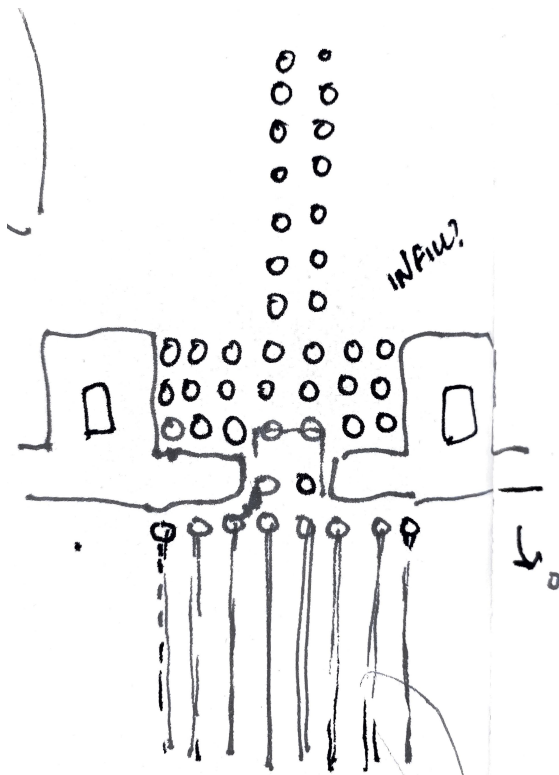
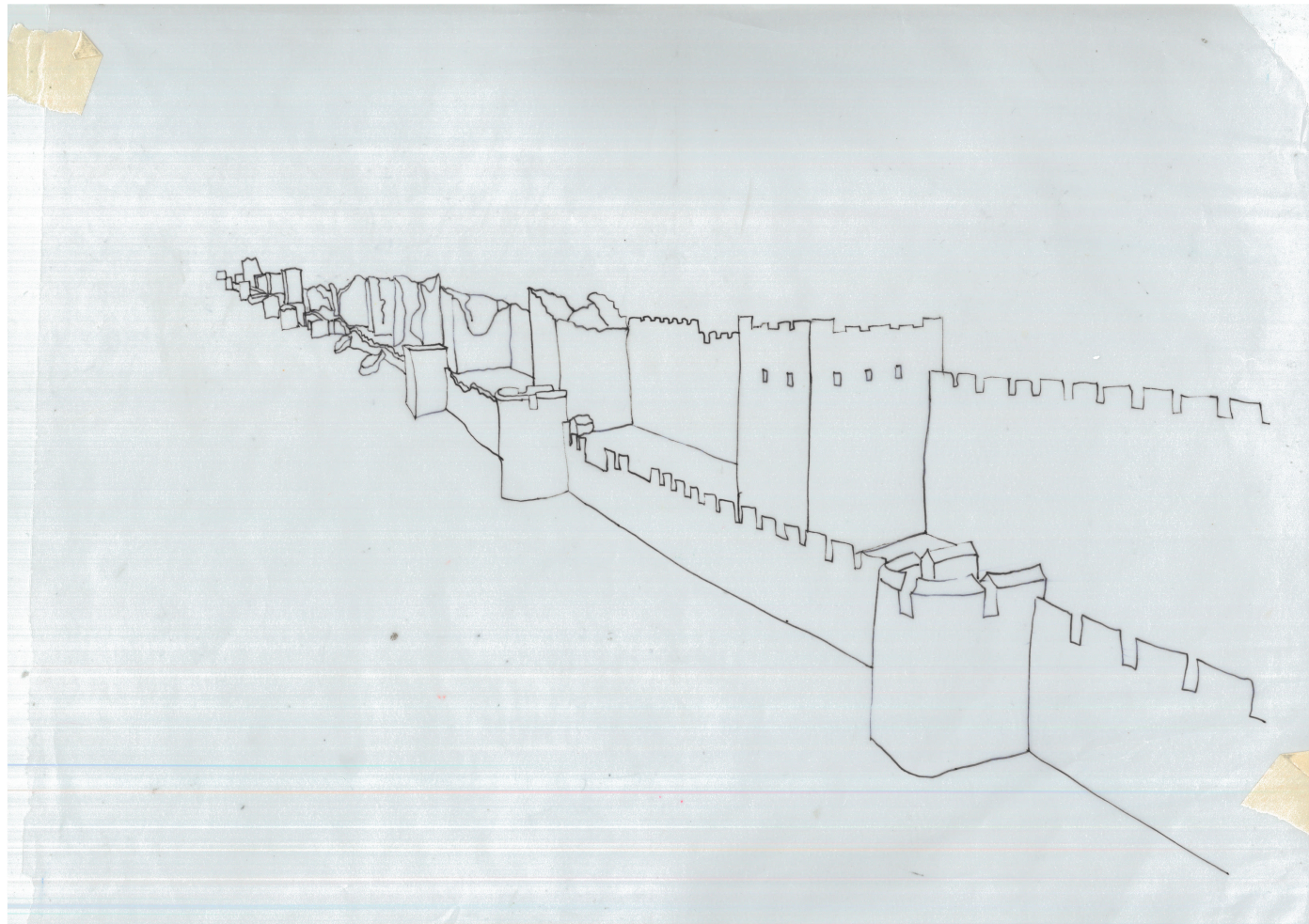
Strange thing that grows.



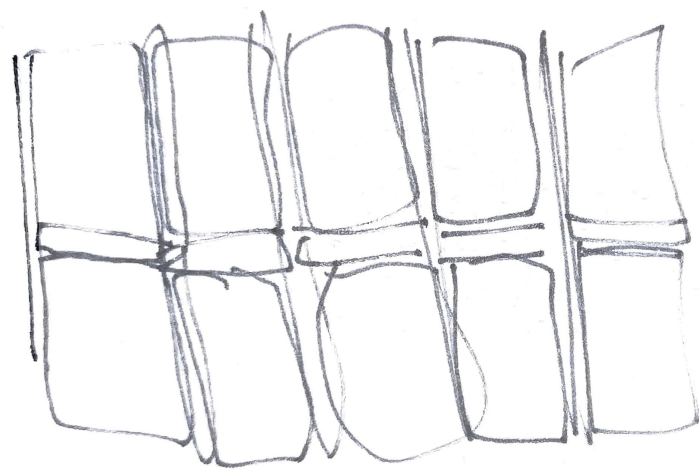
Thing that grows..



Thing that climbs..

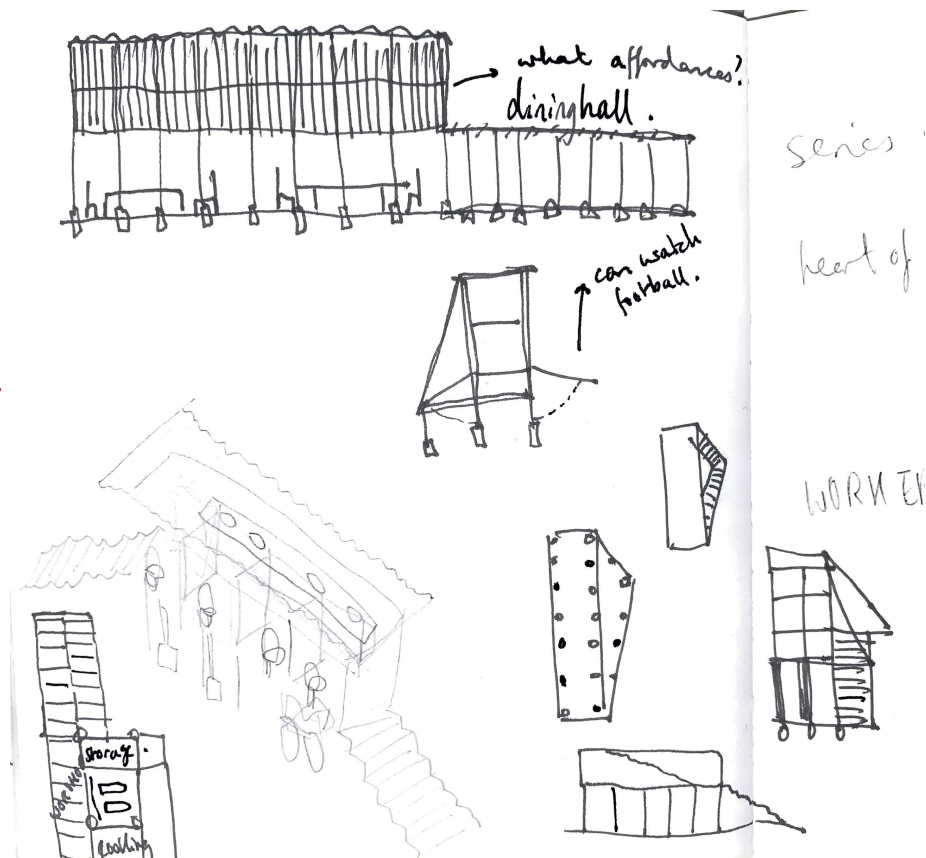
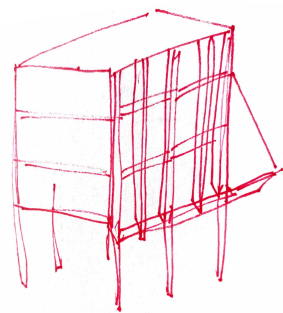


Scaffolding as memory

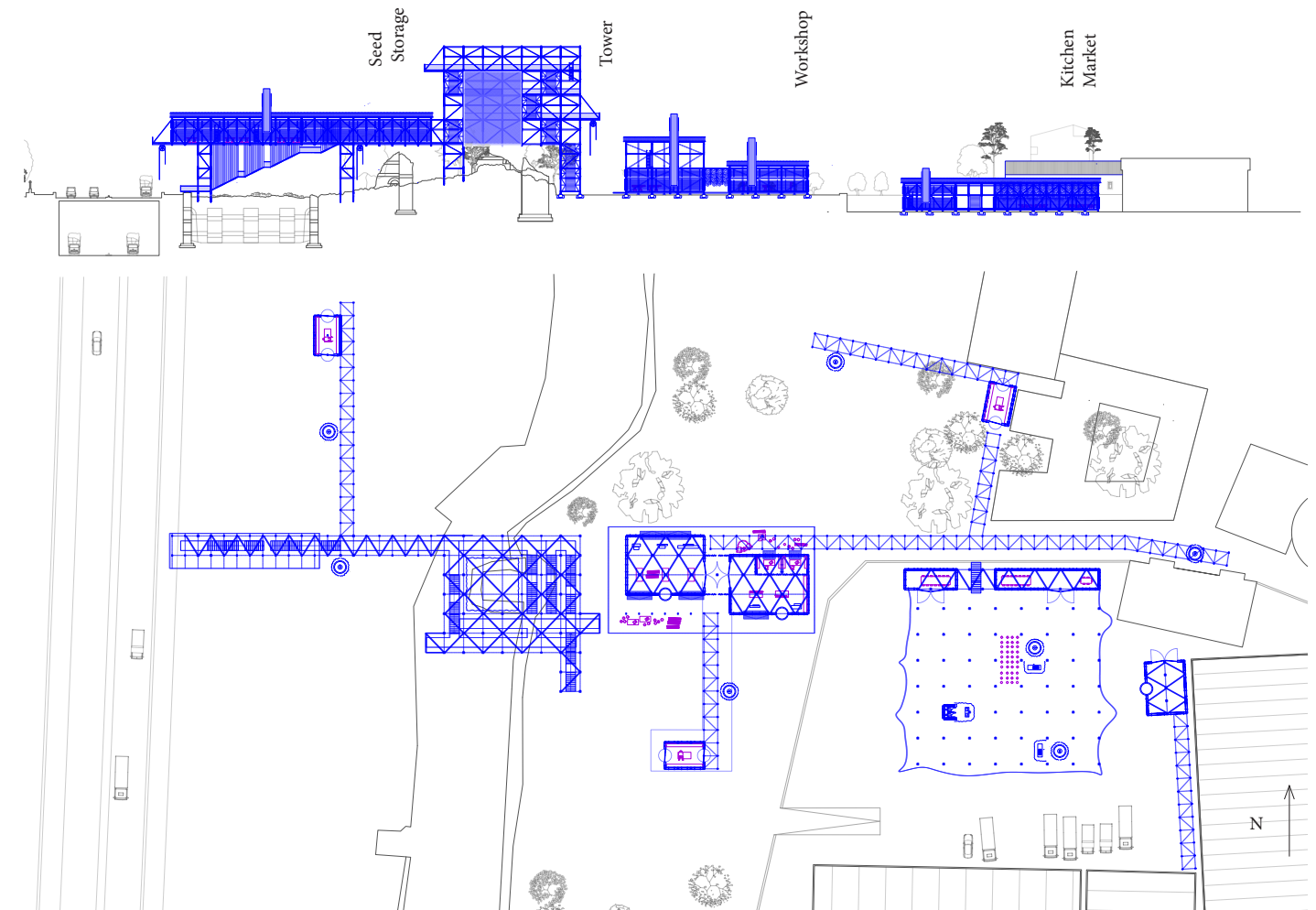


= plot ≈ repeatable system

≈ architectural module



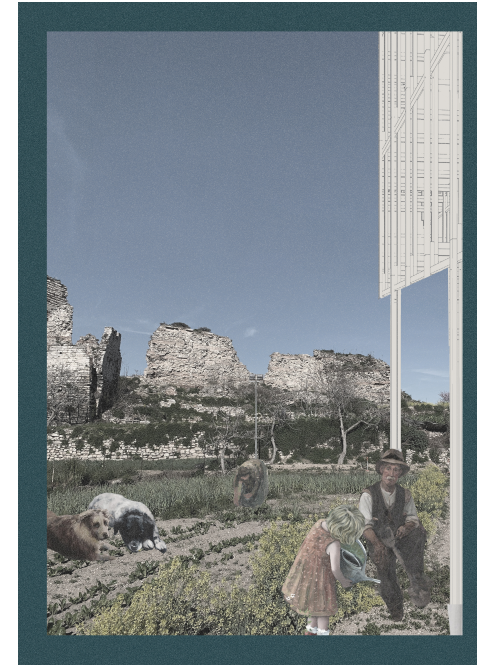
Stepping away from generic form



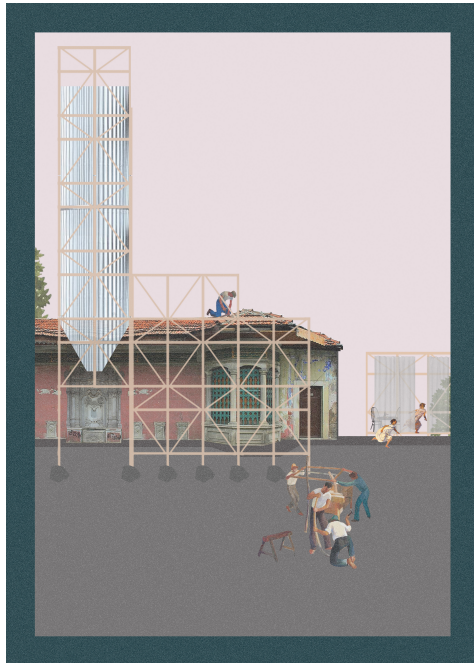
Connecting Intensities



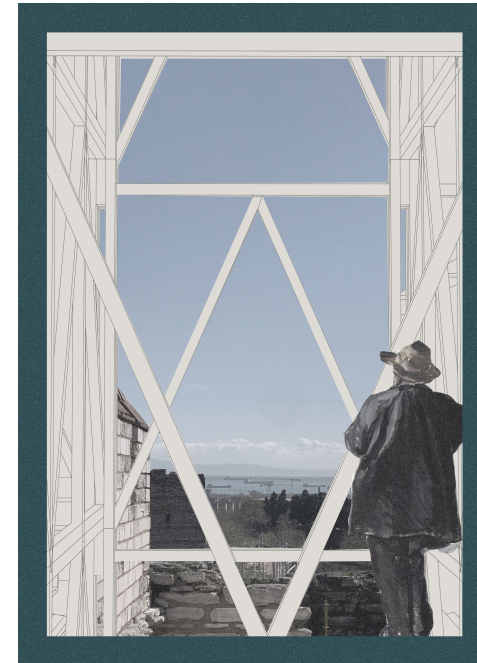
Well



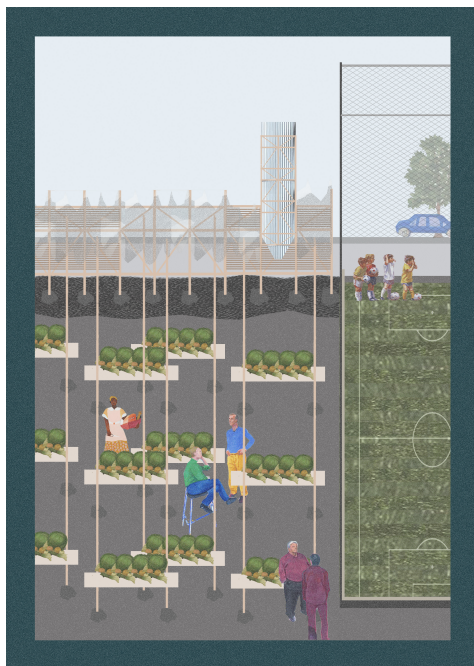
Arriving



Fountain



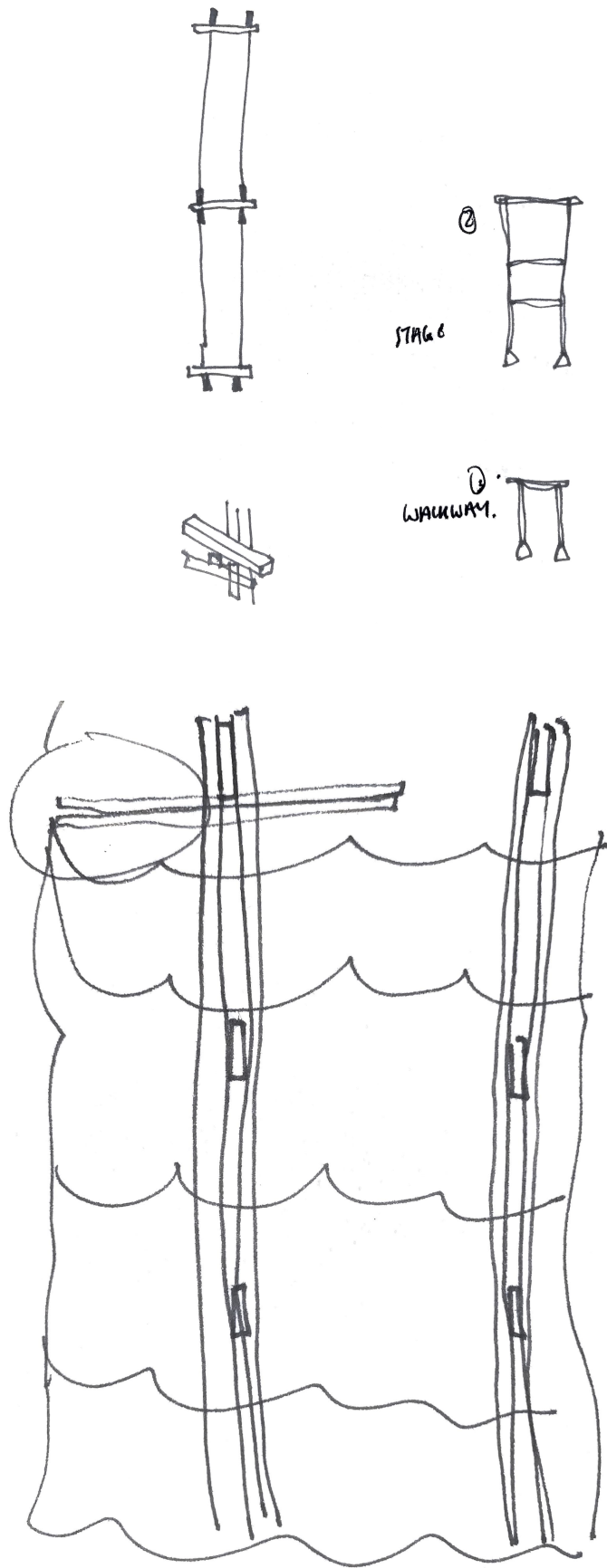
Ascending



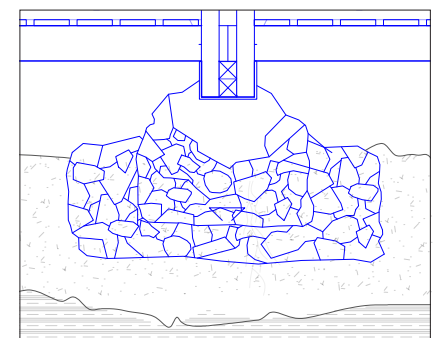
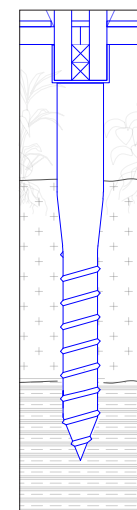
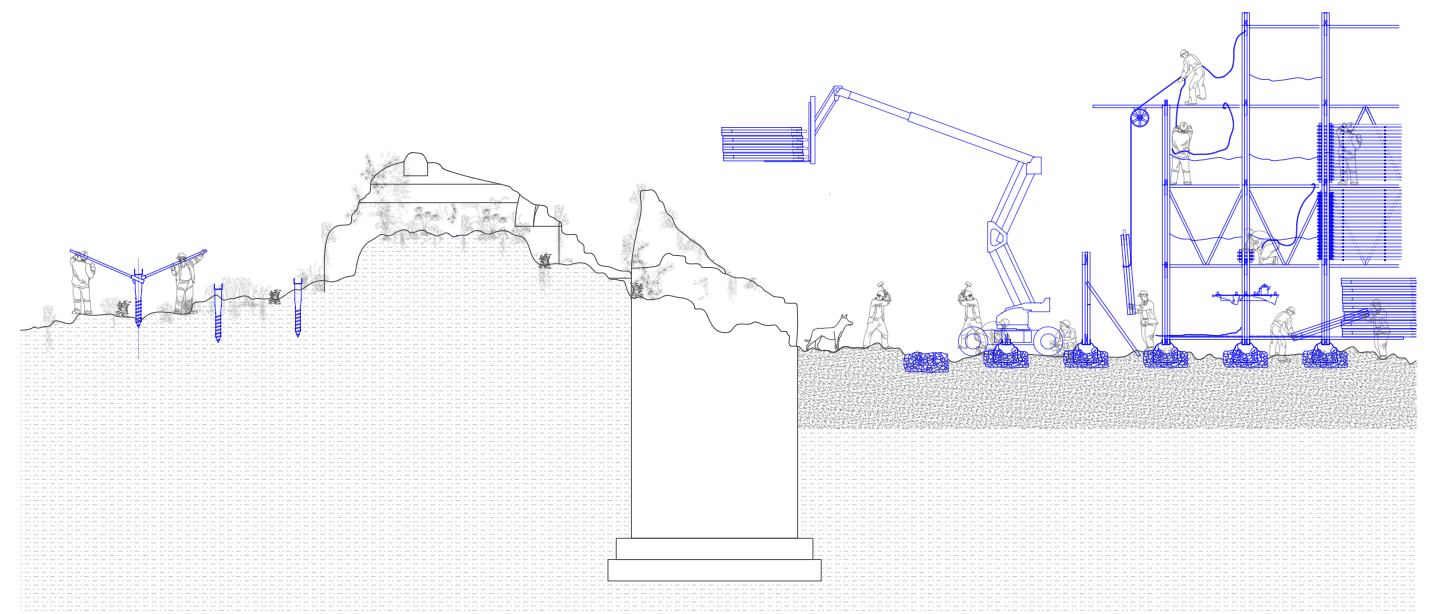
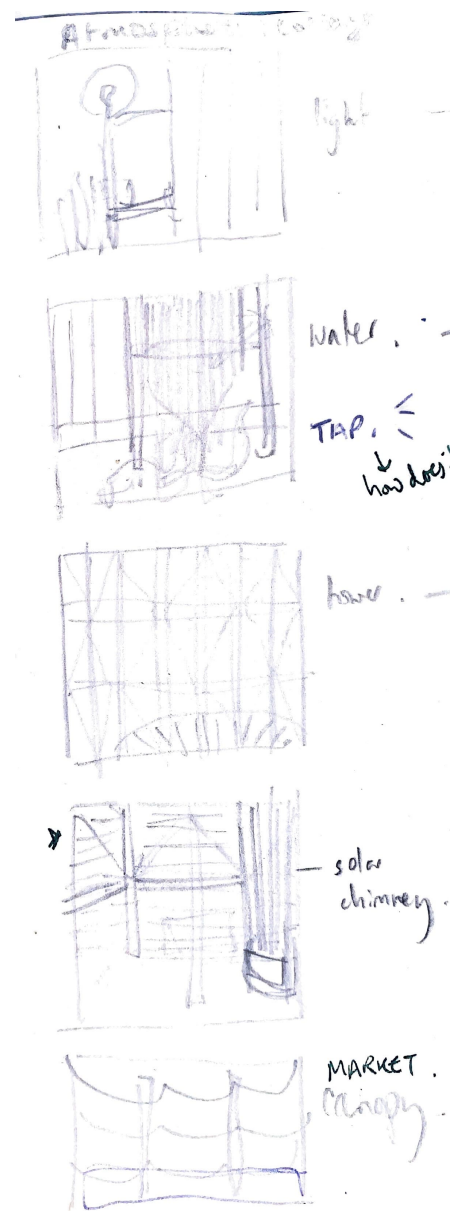
Market



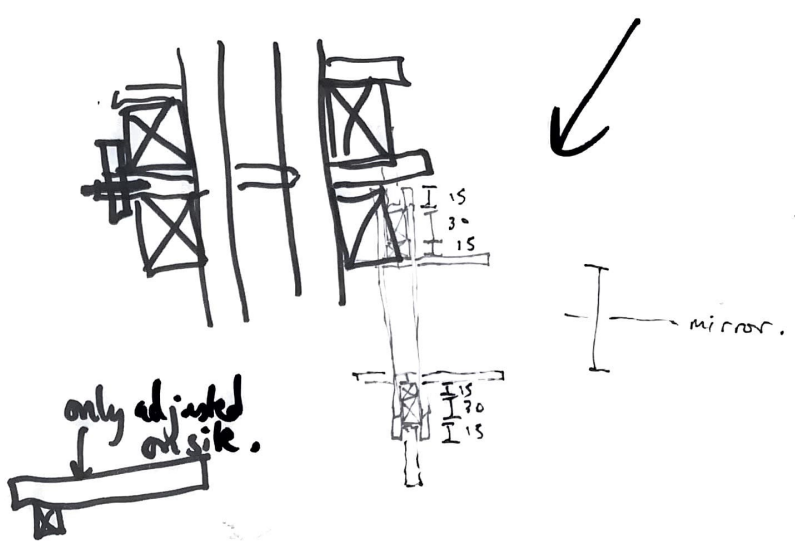
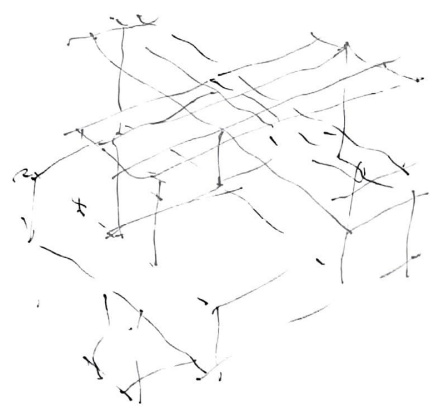
Learning



What could a column accommodate?

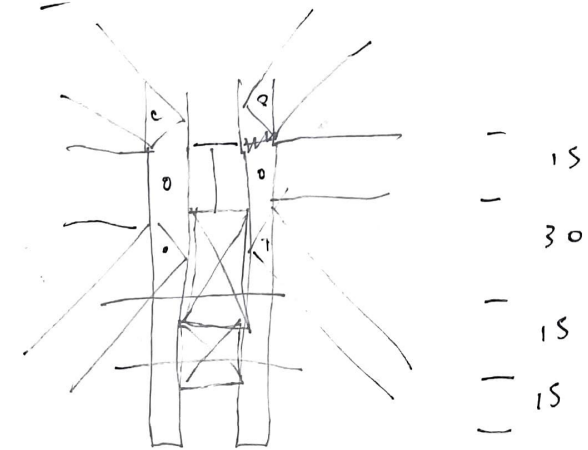
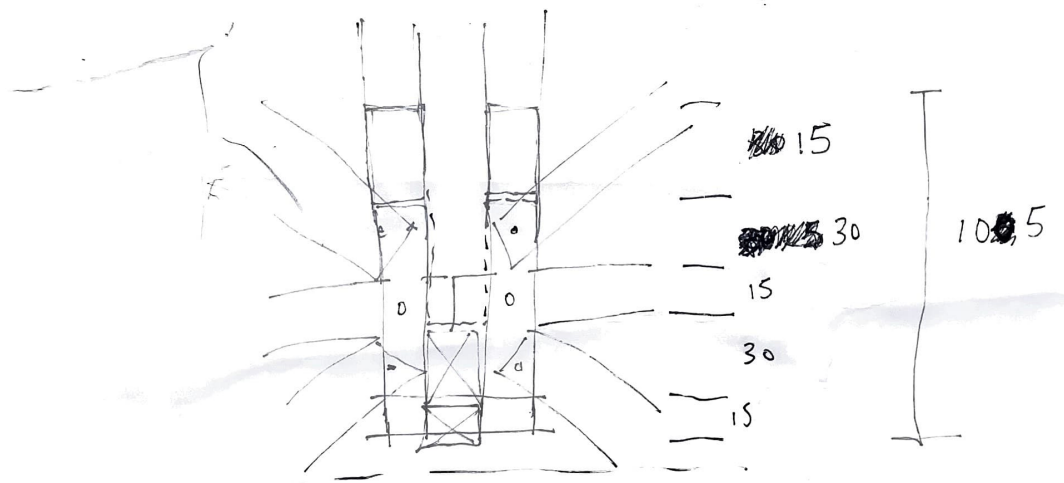


What could a foundation accommodate?

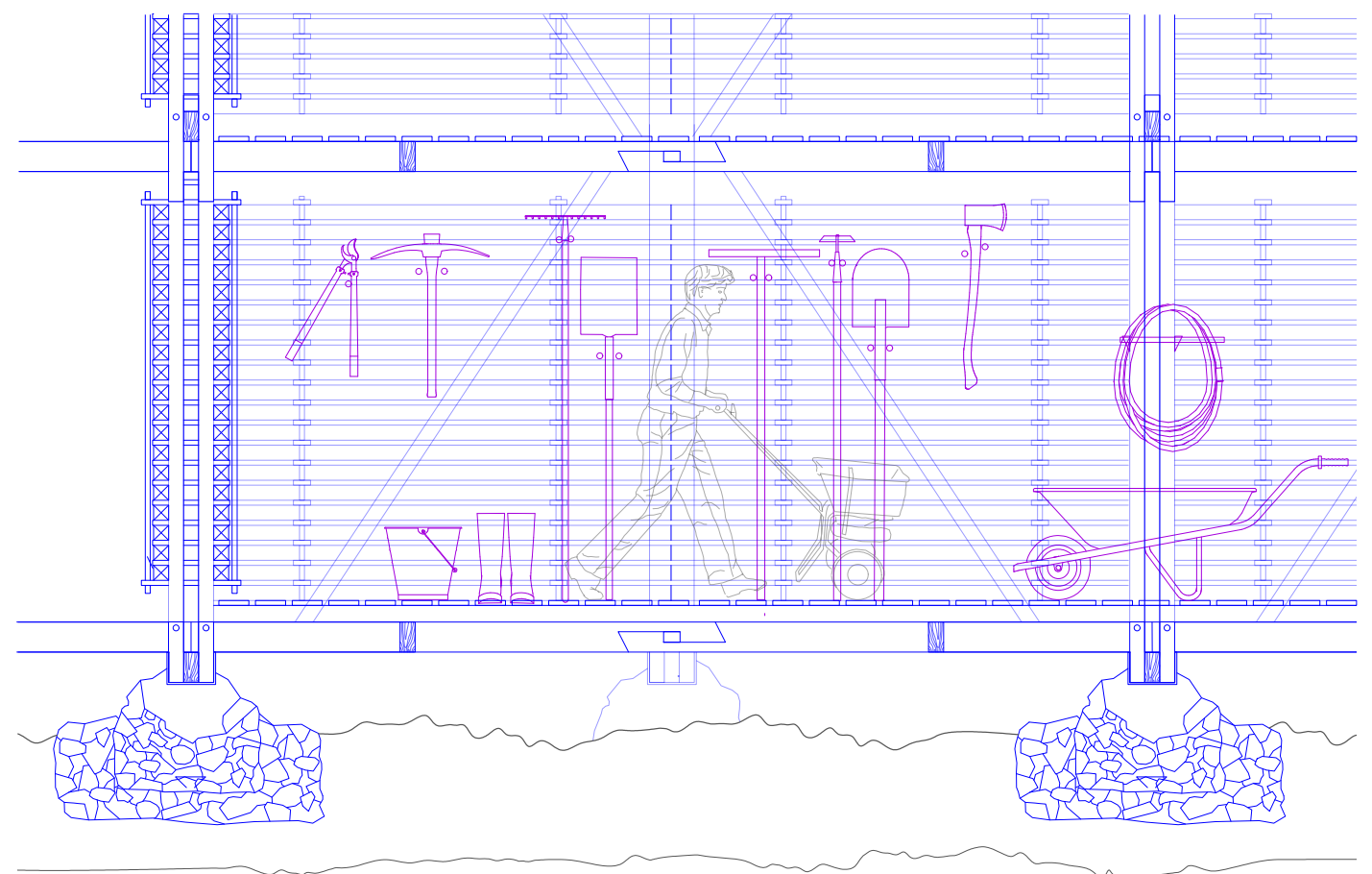
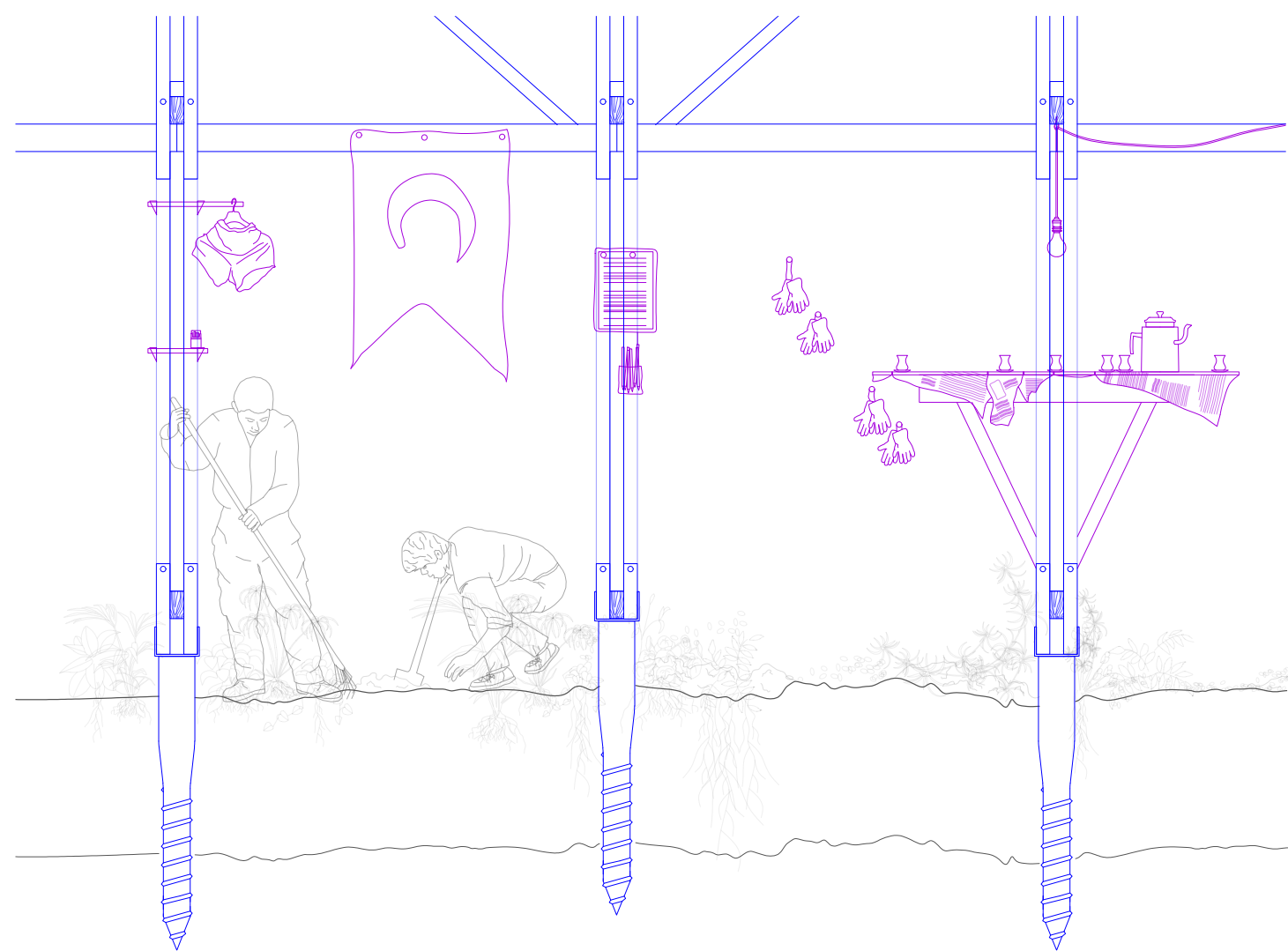


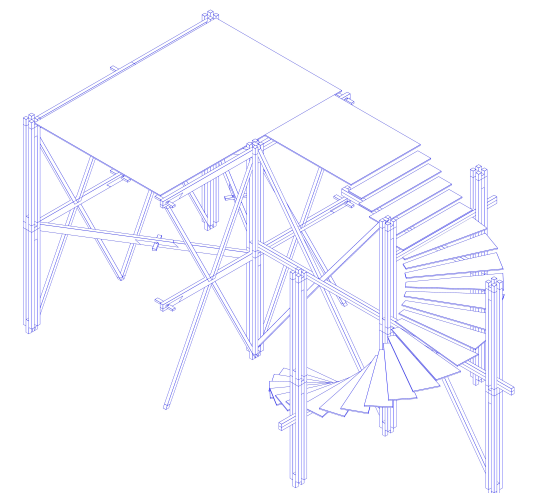
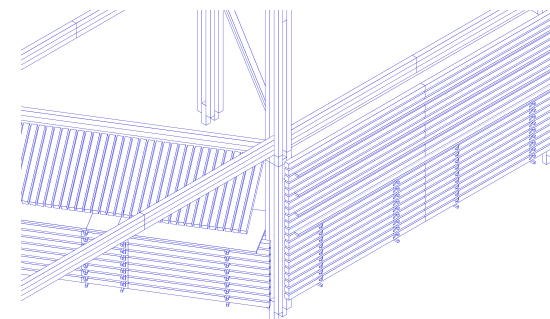
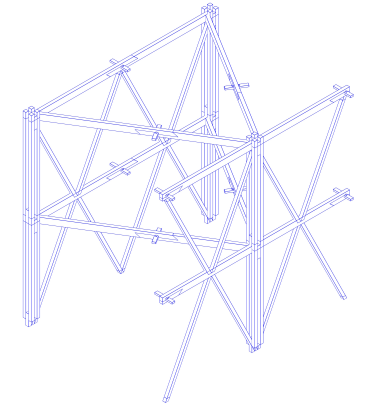
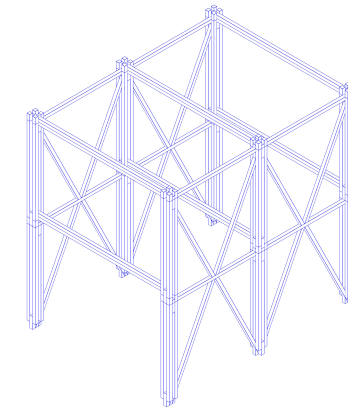
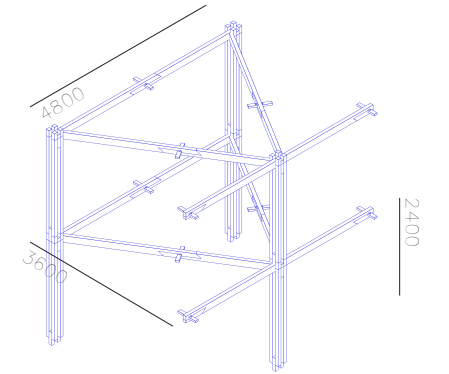
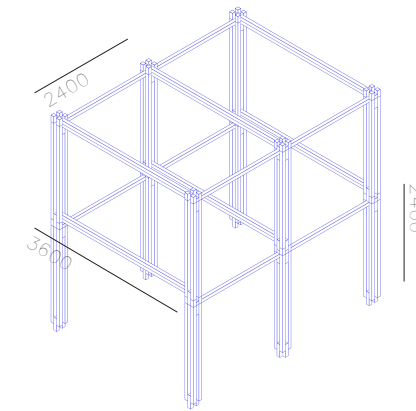
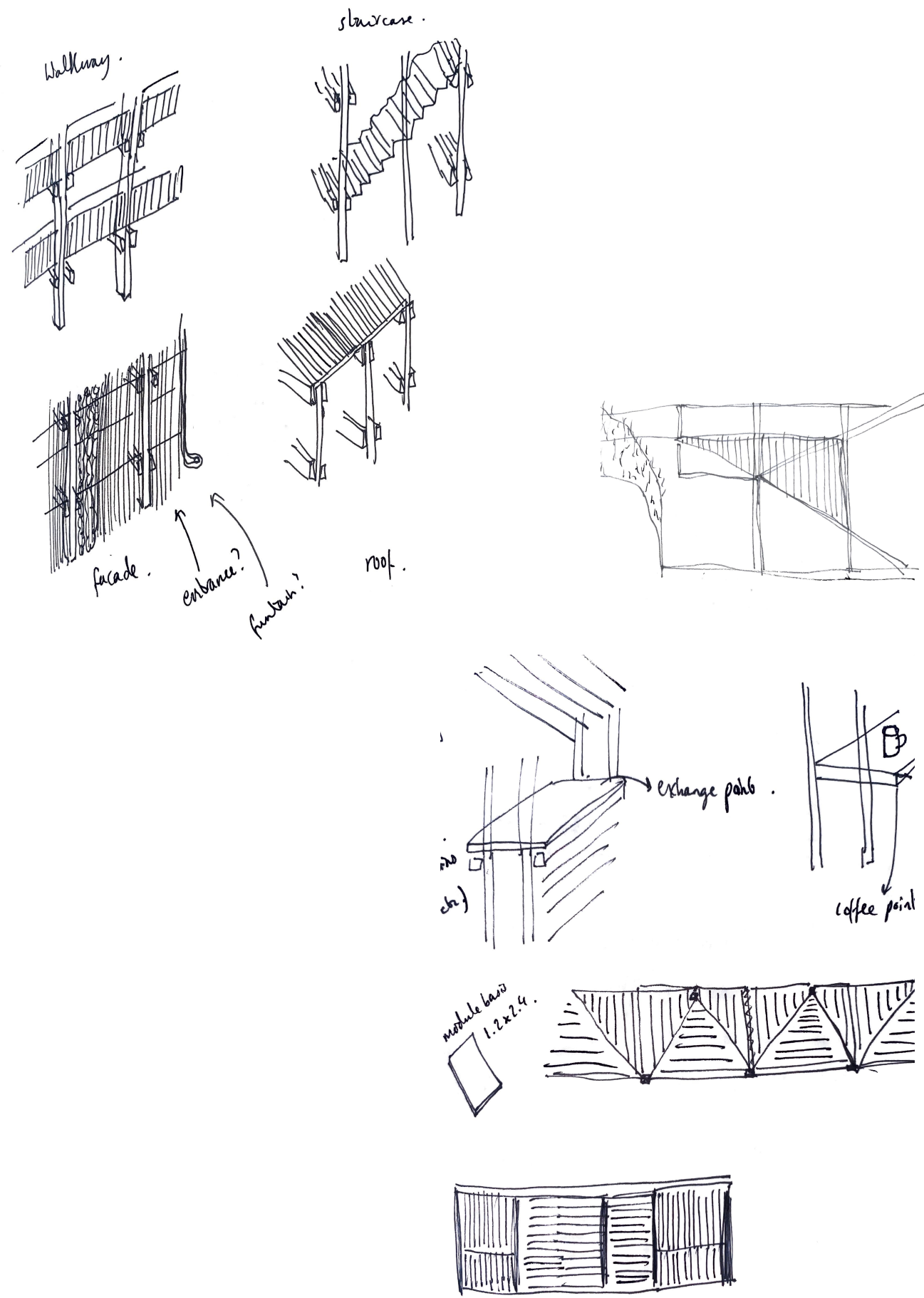
Collage pics.

- ① cross-brace. 1.5
- ② horizontal. (x2) 1.5 + 4.5 + column @ opp.
- ③ column ① 1.5 + 4.5 + 6.75 (2.5 + 8.25)
- ④ pieces for column. 0.75.
- ⑤

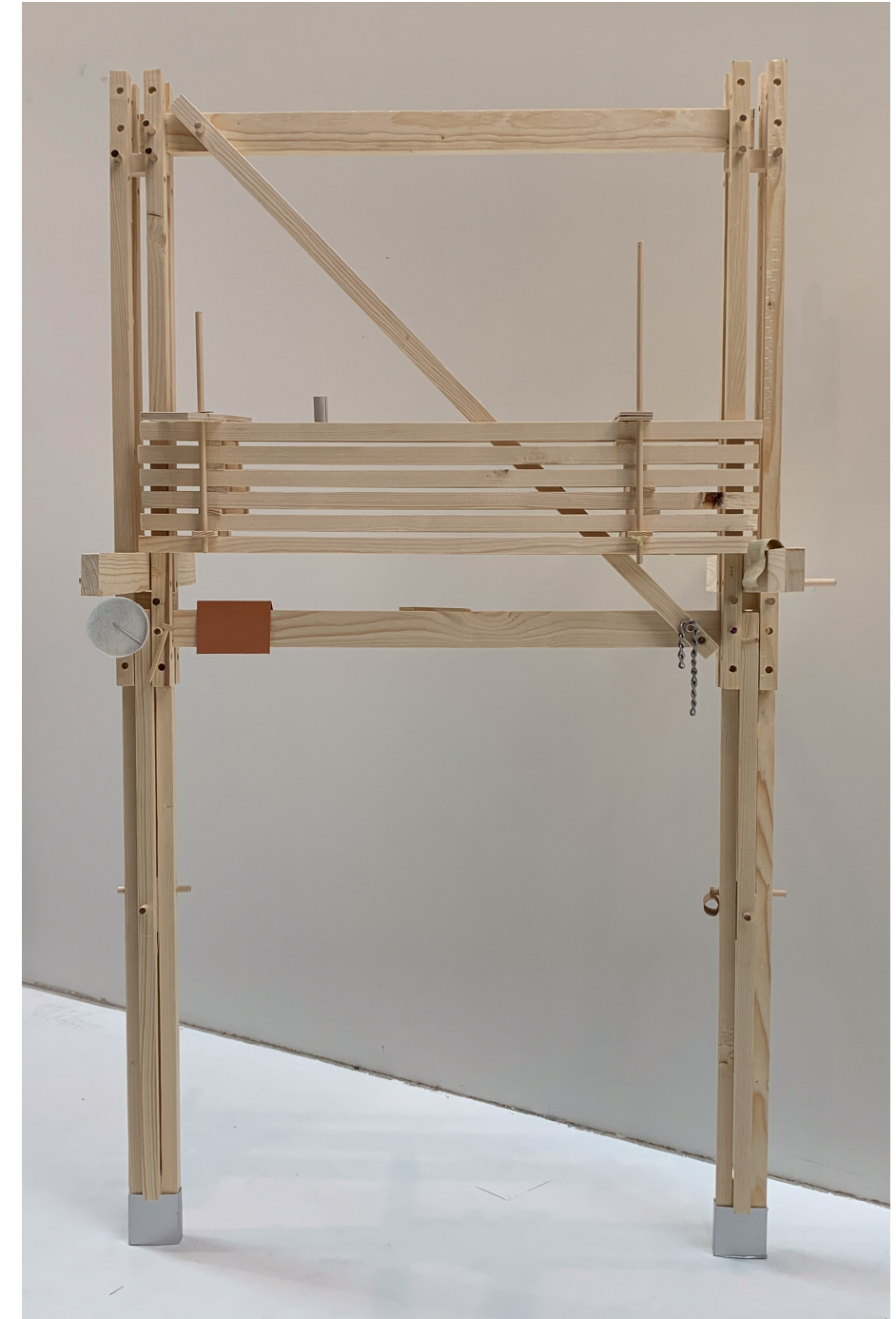
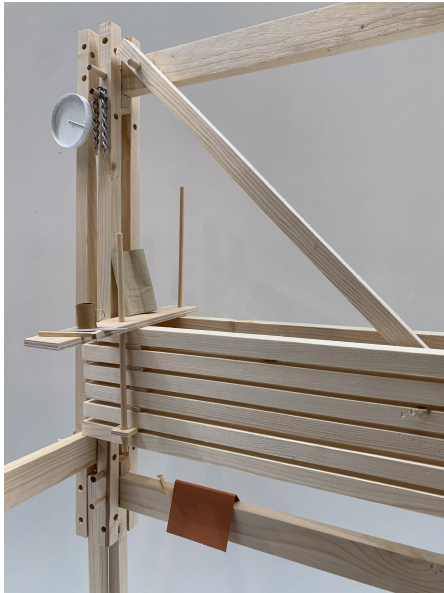


Working out timber joints





Democratic Building Approach: Standard lengths



Habitual Appropriation