

# SNIFFTRAIL

A new way of interacting with your senior dog by using nose work and impulse control training

It is an indoor interior element that increase the quality of interaction between senior dog and the owner and provokes cognitive ability of senior dogs that are losing eyesight.

The name of the Snifftrail came from a combination of sniff and trail. The sniff means that dogs smell over the product and trail contains the meaning that it gives the feeling of adventurous outdoor activity to the senior dog.

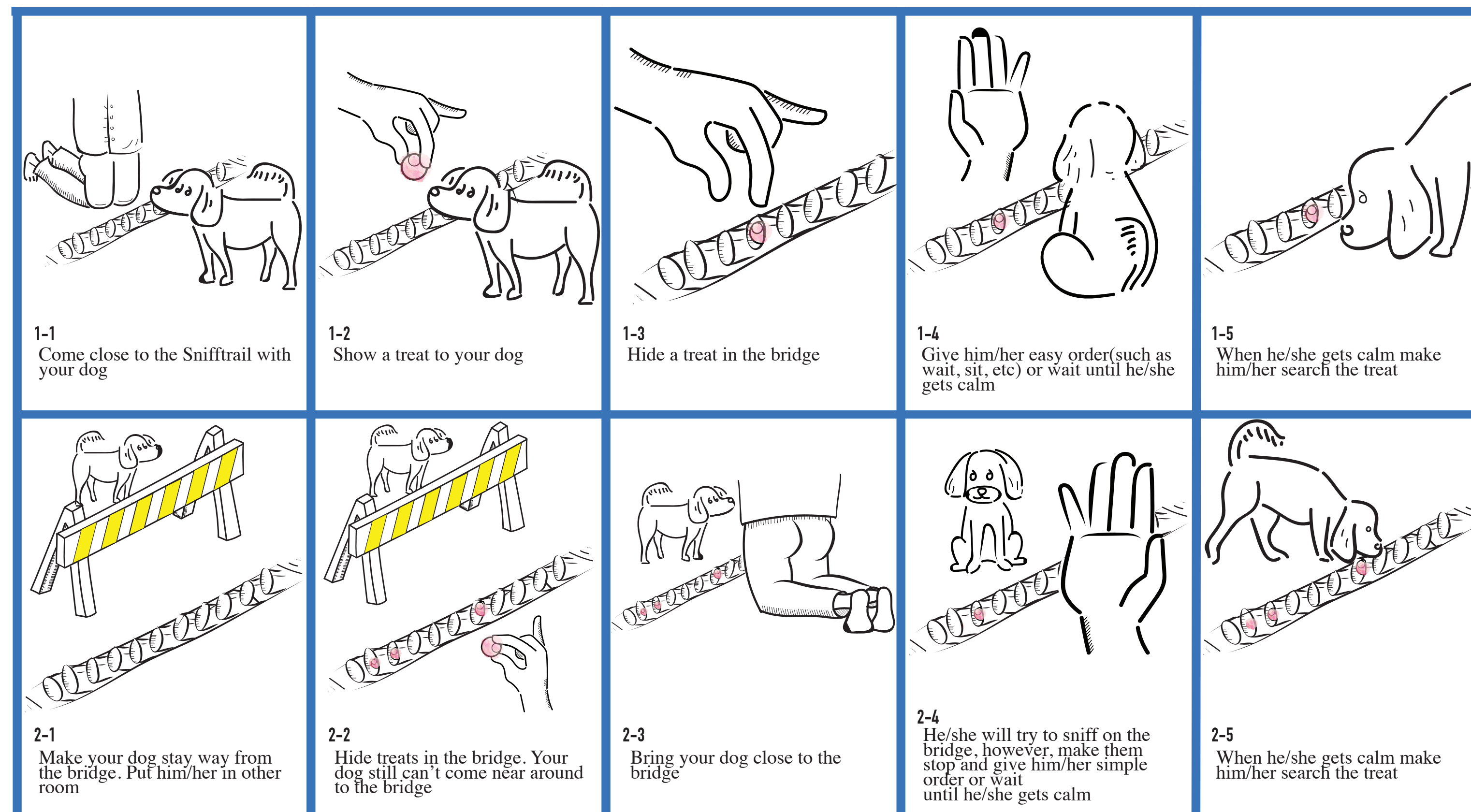
It consists out of two parts, of which the first one is orientation. This part will create a qualitative interaction between the dog and the owner, and making the Snifftrail (second part) a trusted and familiar place by using impulse control training in a new way.

The second part, exploration, functions as guide and stimulation for the senior dog to move around the house when the owner is not home. It does so by using a trail (Snifftrail) between the comfort and essential spots in the house of the dog. These spots can for example be: Kitchen (food), living room (sleeping), and bathroom (toilet). By bridging these spots, the dog will not get lost as easily, and is more prone to move to from one spot to the other.

The Snifftrail can be seen as a form of tactile pavement. This is a method of textured ground surface signs located on the pedestrian road, stairs, and train station platforms to guide pedestrians who are visually disabled to their destination (Pluijter, de Wit, Bruijn & Plaisier, 2015). The Snifftrail is not only tactile, but also works by smell so the strongest sense of all dogs will be stimulated.

The Snifftrail is placed on the floor of the house using velcro so it is easy to move, install, and de-install against the walls to the spots of interest. Dogs (that cannot see properly anymore) will find their way by sniffing the Snifftrail intuitively by themselves and follow it to the next spot. The dogs will feel comfortable and confident using the Snifftrails because they did the impulse control training on them creating a save spot.

The unique fabric features of the Snifftrail will make it; easy to hide treats, intuitive to use for dogs, and protecting both the dog and owner. Three types of Snifftrails will be used to create a difference in location and direction the dog can go to.



Heidi Lee  
Snifftrail  
29.11.2017  
Integrated Product Design

**Committee**  
Pieter Desmet  
Jan Schoormans  
  
**Company**  
MARS Petcare

