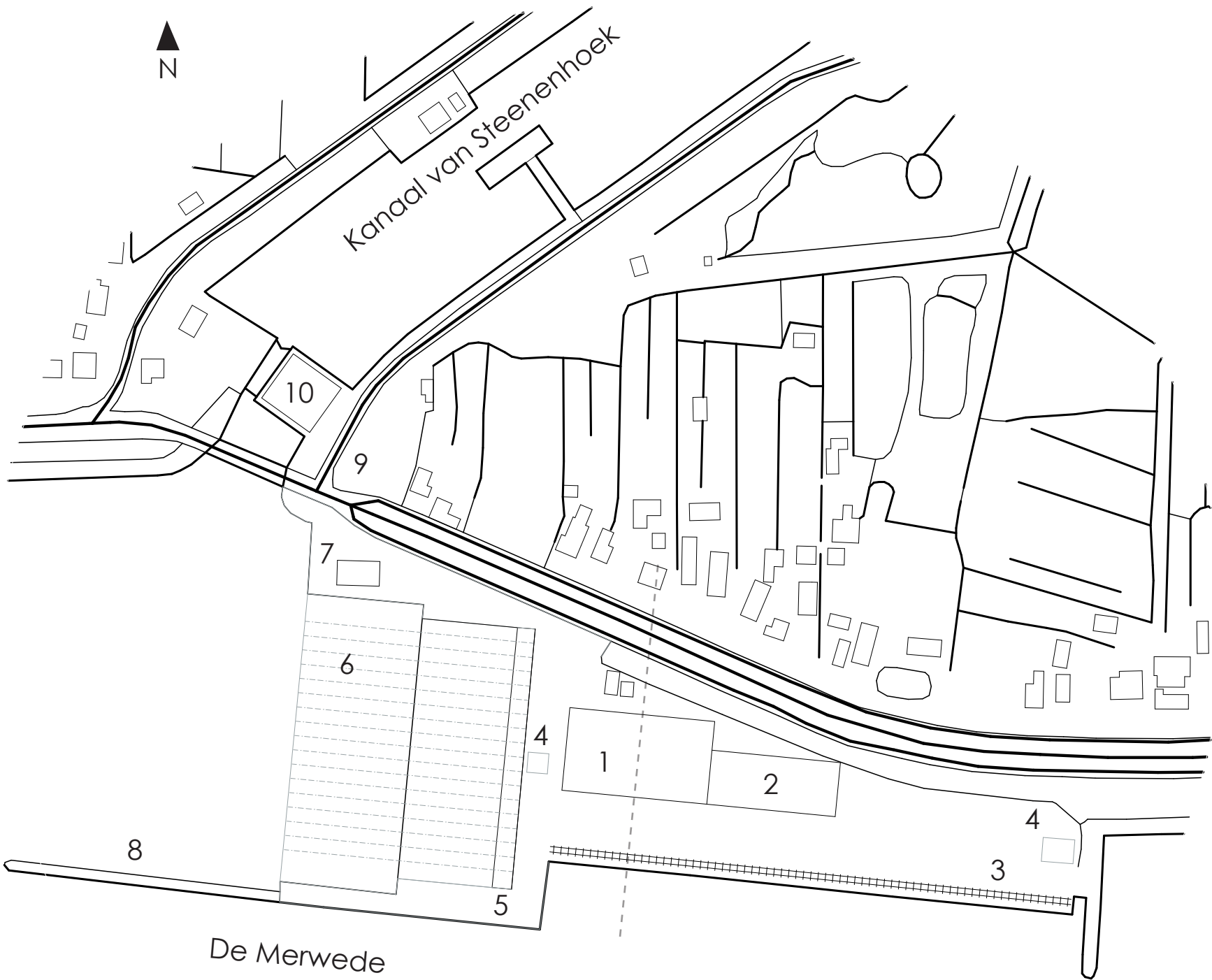


Shipyards Neptune - repair wharf

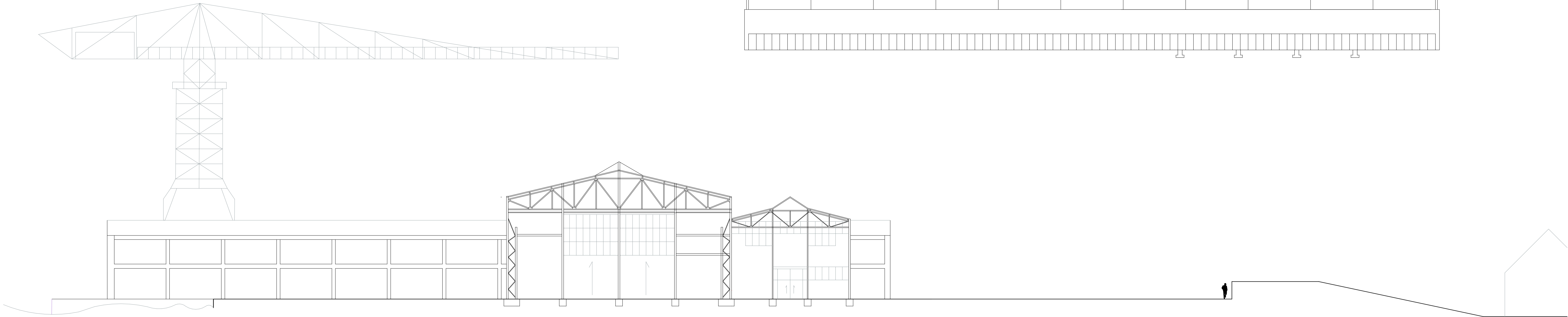
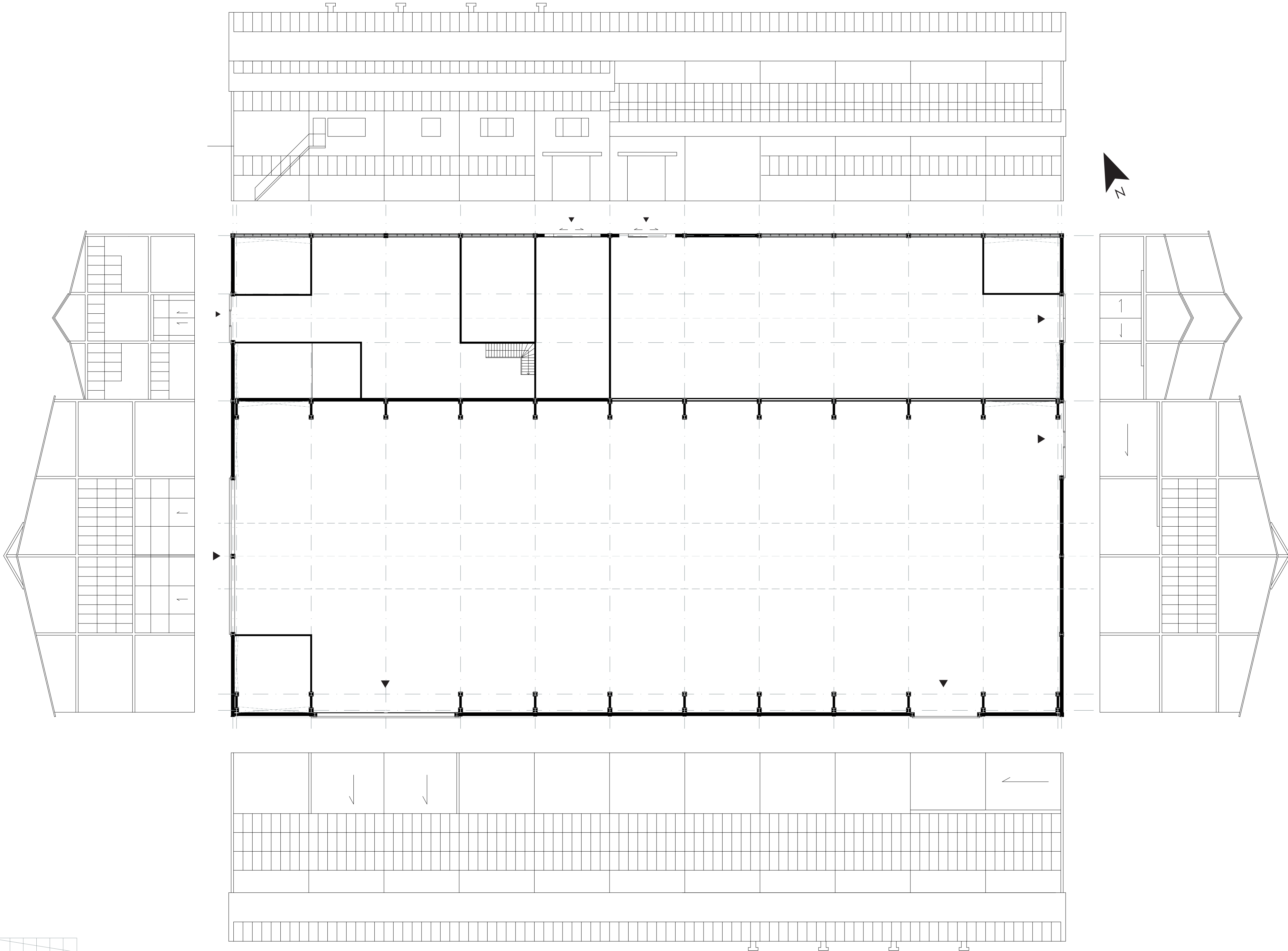
1:1000



- 1. Welding Hall - 1952
- 2. Big hall - 2017
- 3. Railway - 1957
- 4. Romneylood
- 5. Crane track
- 6. Slope
- 7. Office
- 8. Quay
- 9. Dike
- 10. Mr. Dr. G. Kolff Gemaal - monument

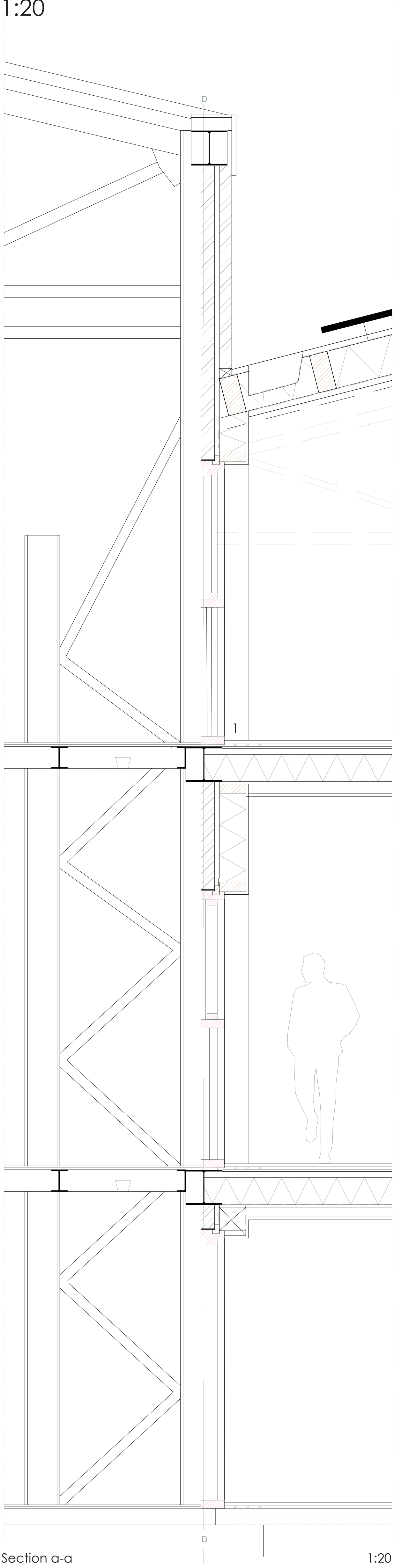
Neptune repair wharf is a still active member of the maritime industry in the Waterdriehoek. The site is located outside the dike along the river Merwede and showcases a variety of structures, like the big welding hall and a slope with a crane. The wharf is strategically oriented along the river side, making the connection between land and water stronger. Next to this the slope also functions as a strong connector, not only with water, but also socially with the village. Looking at the historical developments, the Shipyards, previously known as Scheepswerf 'De Merwede', lived a prosperous life providing new jobs opportunity, worldwide production and many celebrations by fostering traditions like 'Terwaterlating'.

This makes the shipyard part of the industrial maritime heritage positioned within the regions of the Erfgoedlijn, te Waterdriehoek.



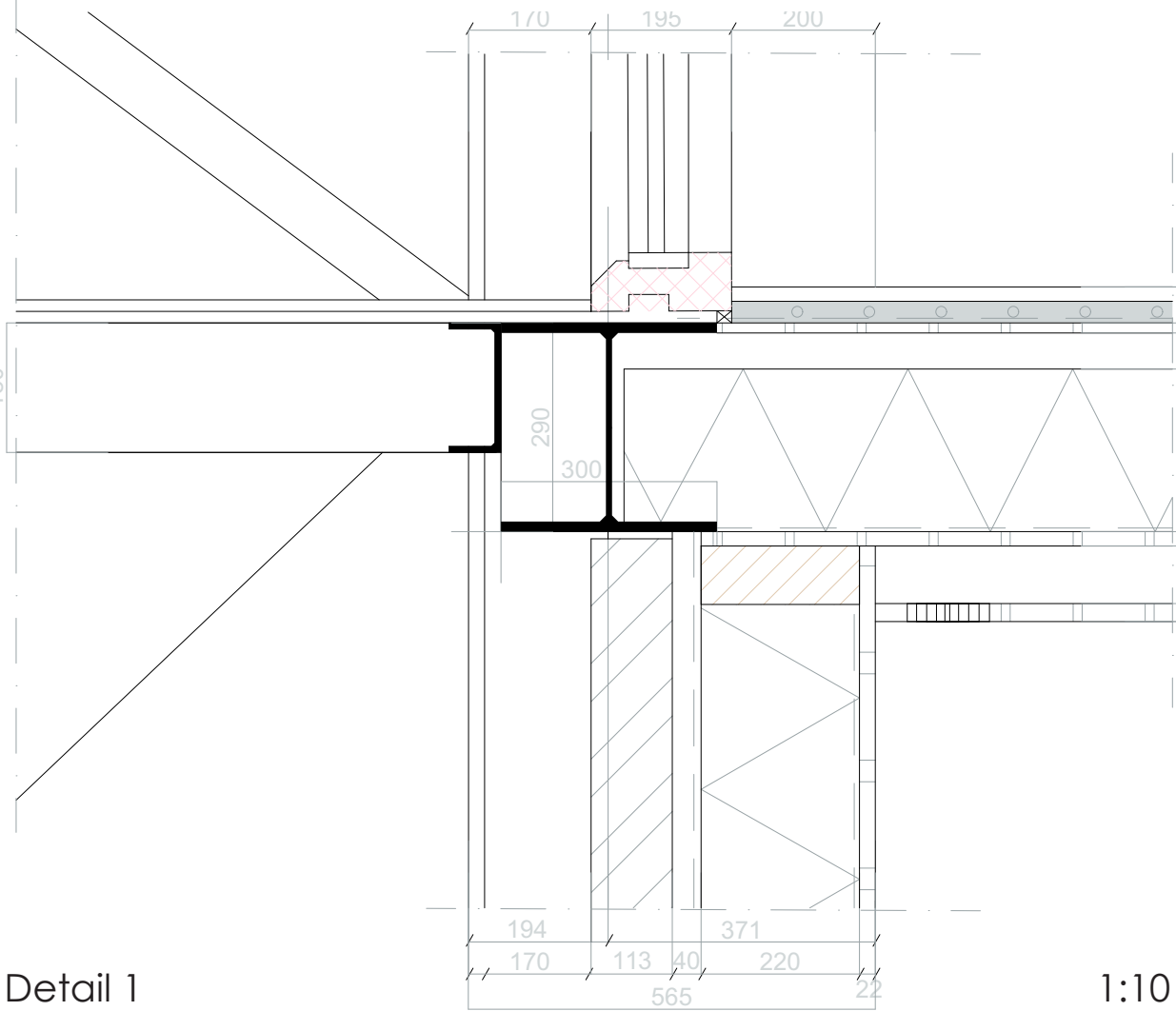
Site section

1:20



Section a-a

1:20



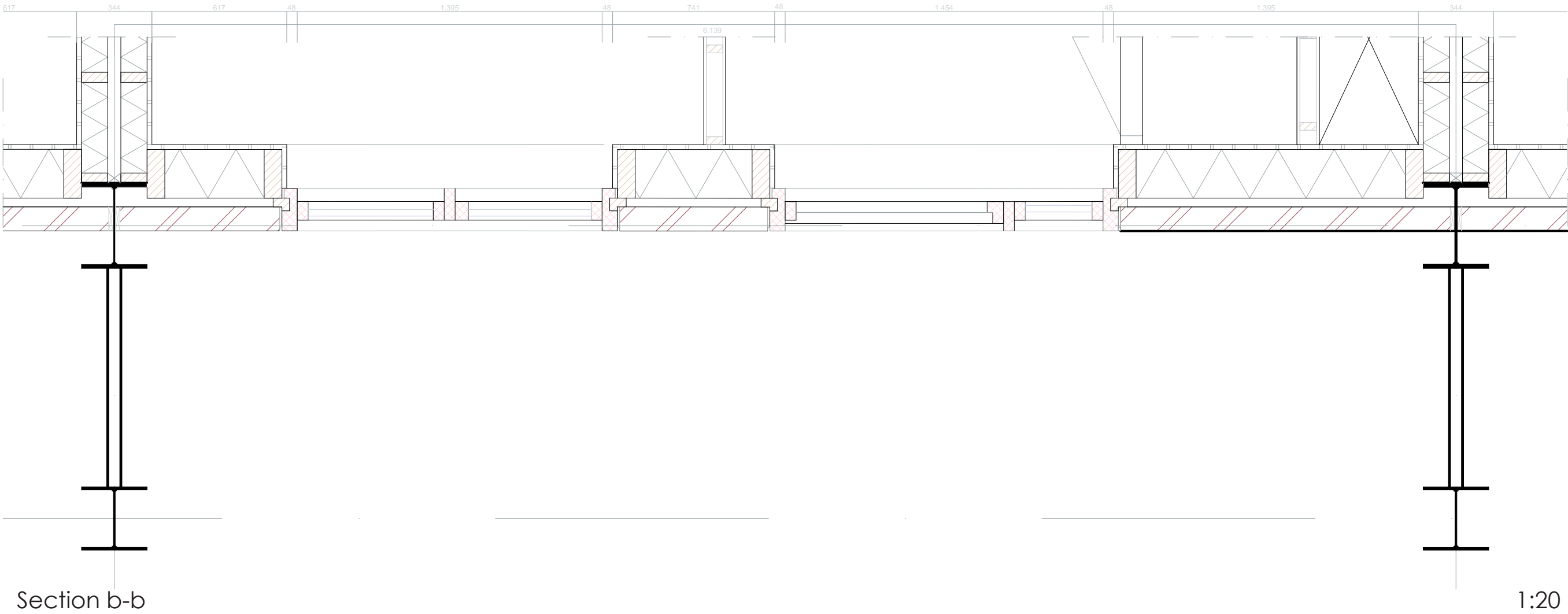
Detail 1

1:10



Section b-b

1:20



Detail 2

1:10

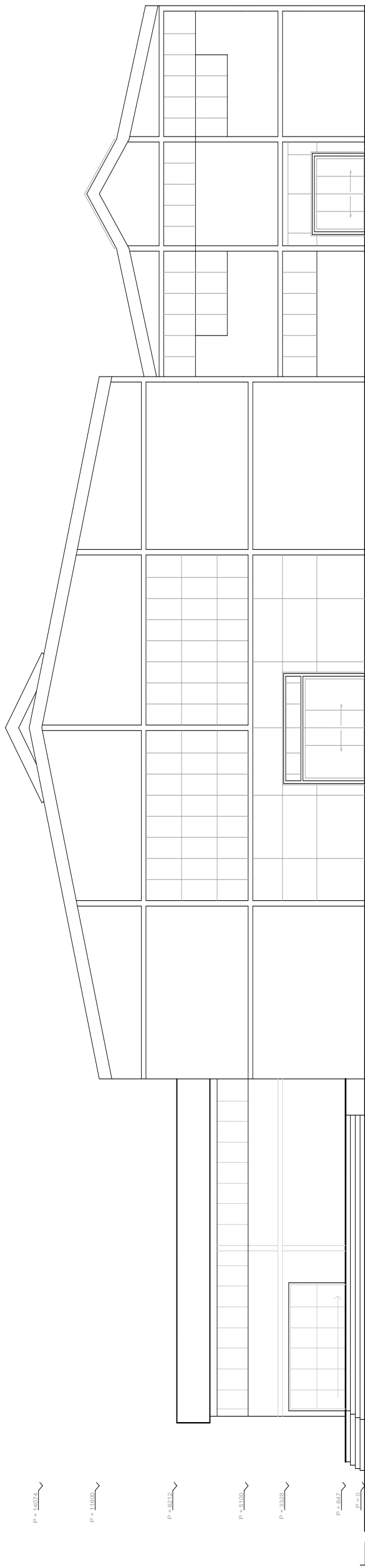
Deel A - North facade



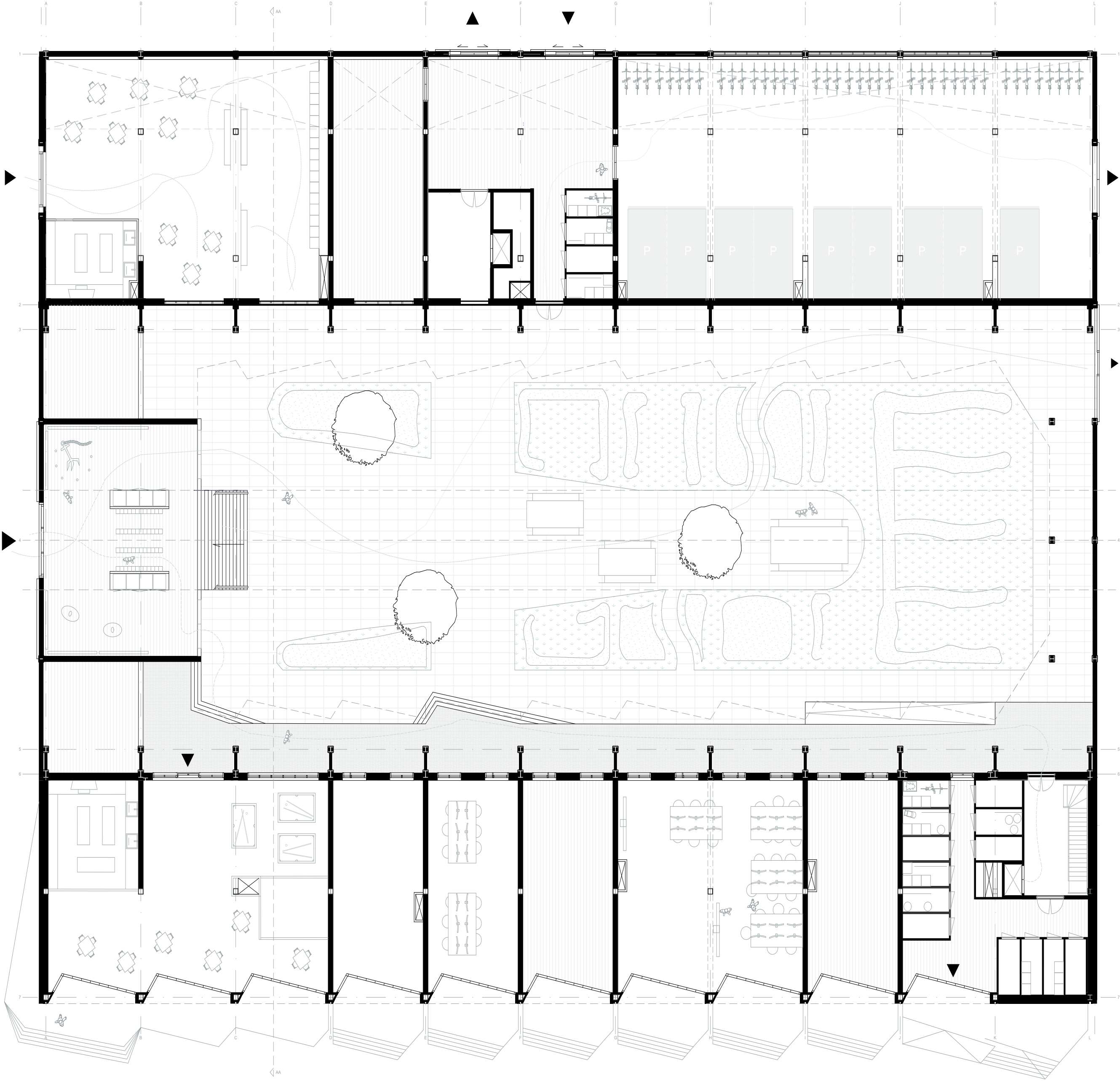
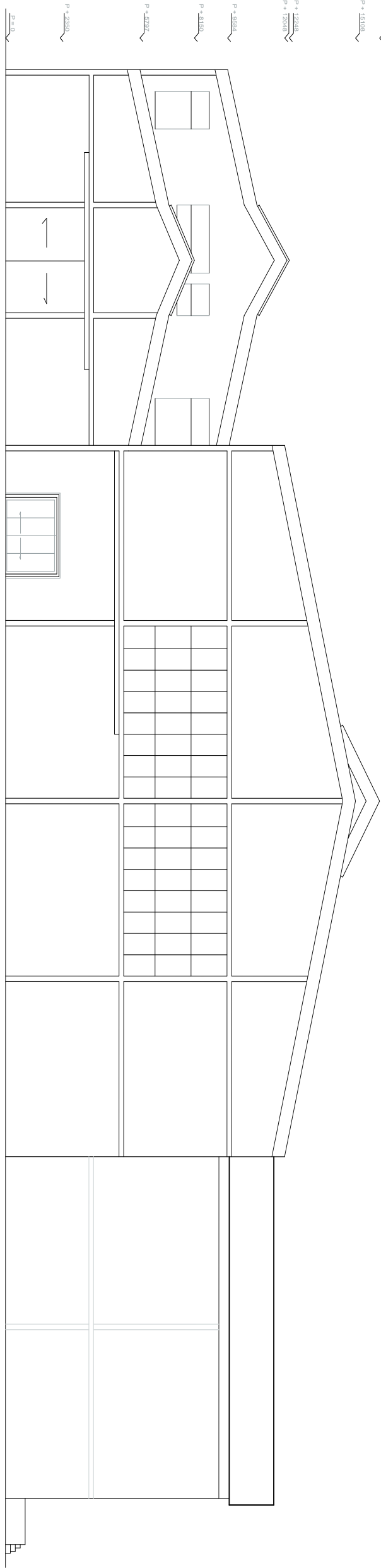
Deel A - courtyard facade



Deel B - West facade



Deel B - East facade



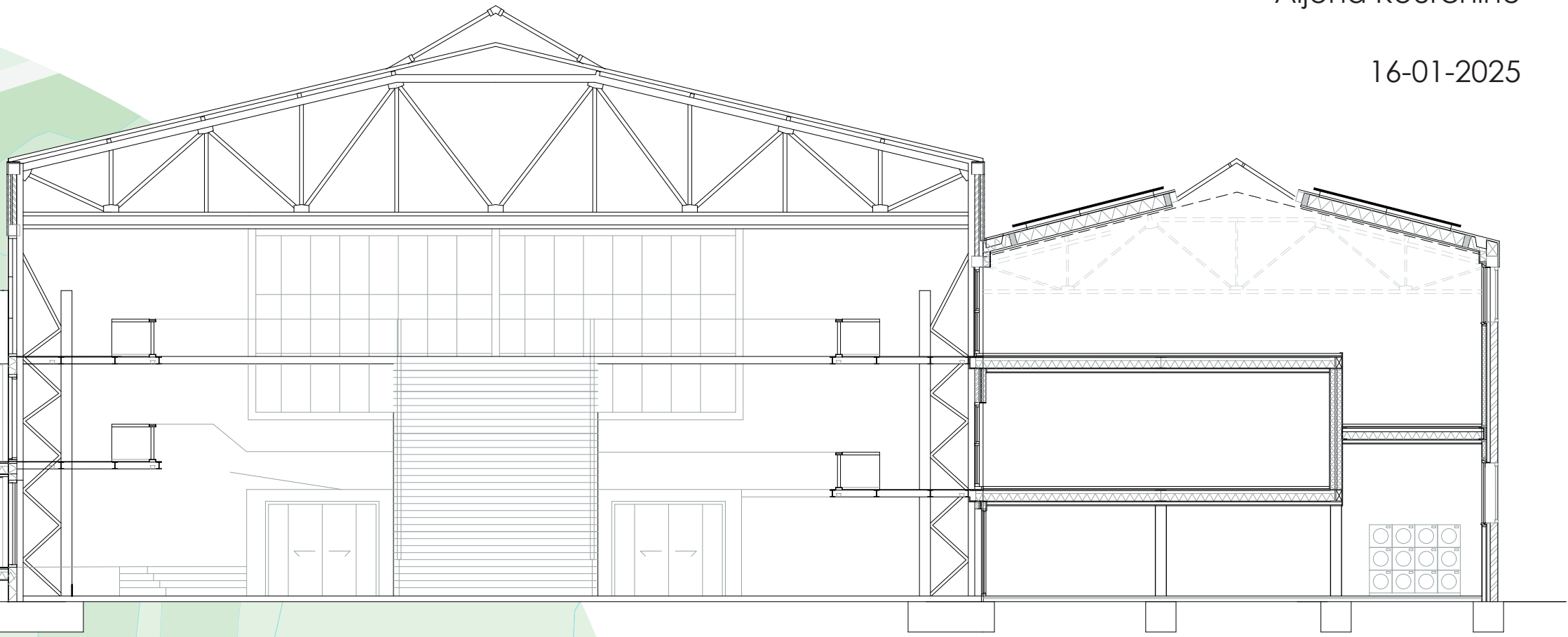
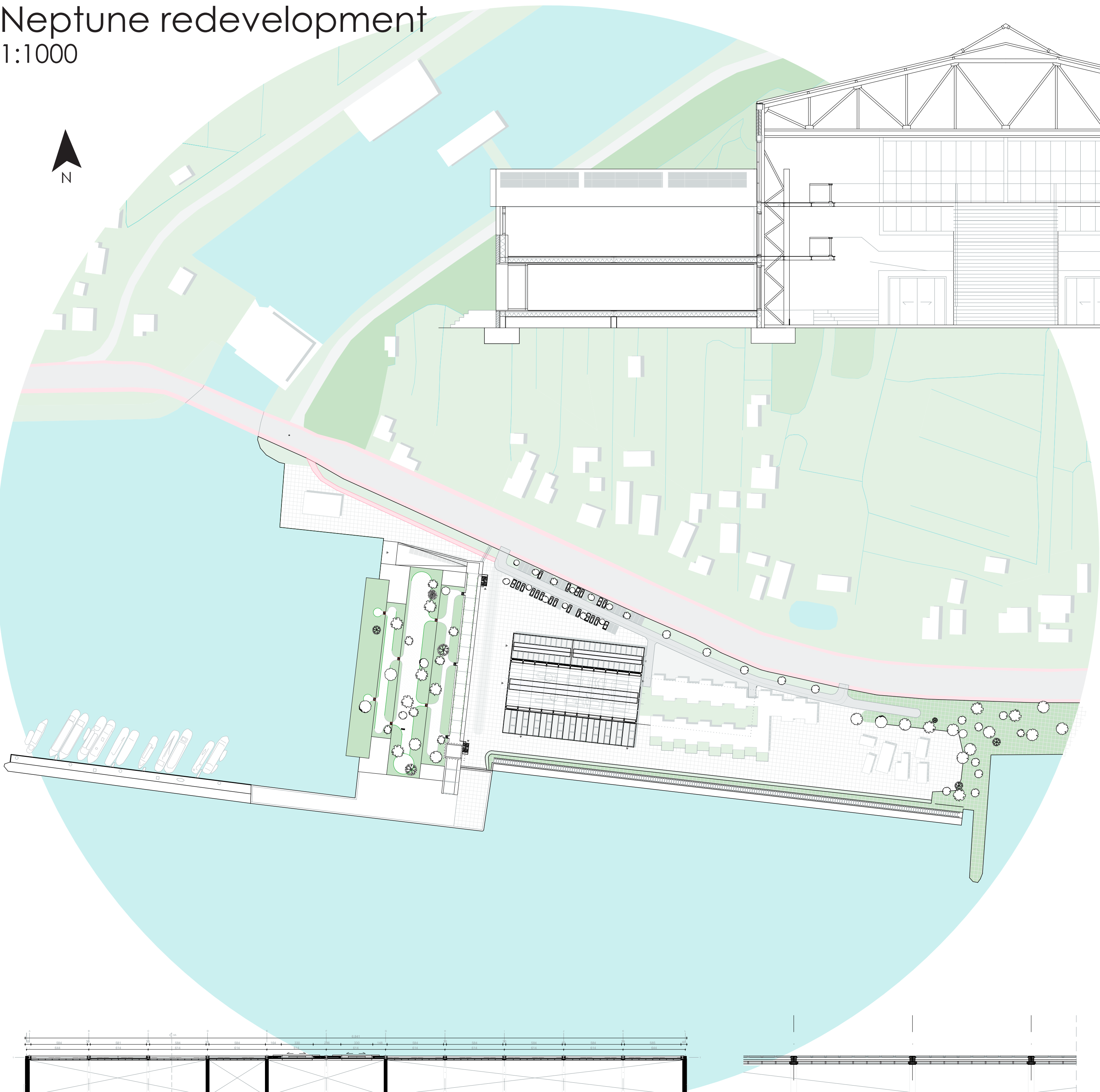
N Ground floorplan



Deel C - Courtyard facade

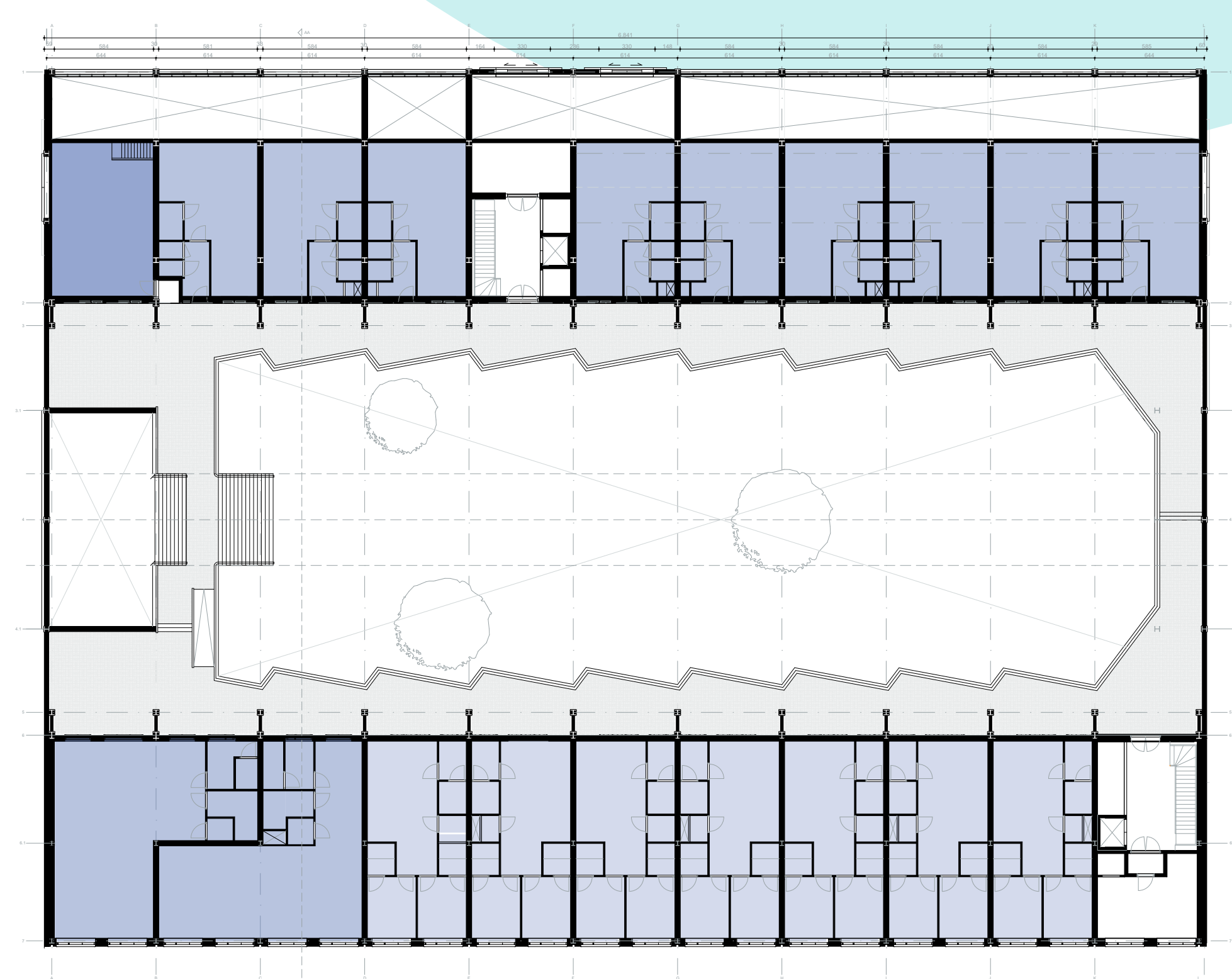


Deel C - South facade

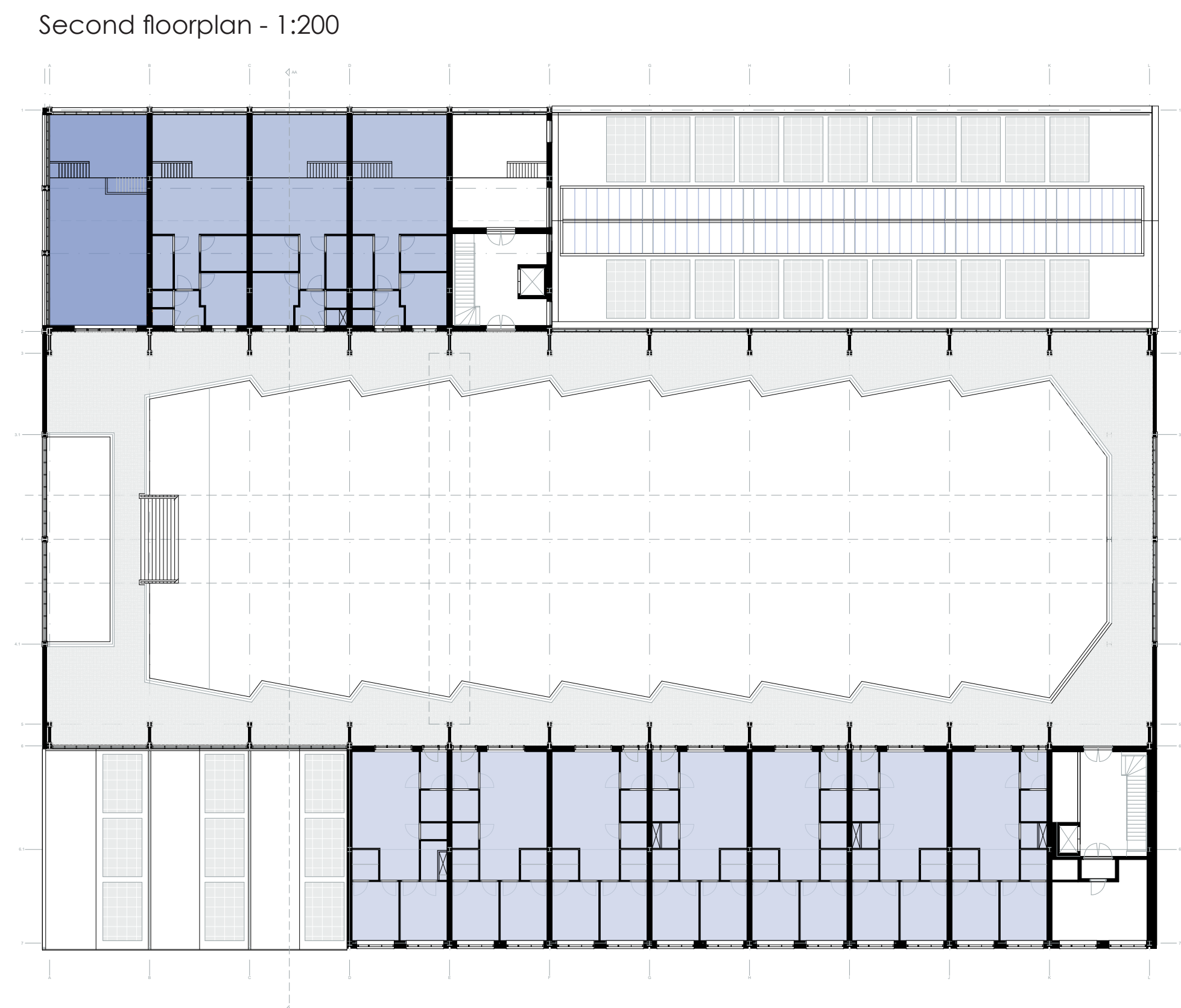


Section AA
1:100

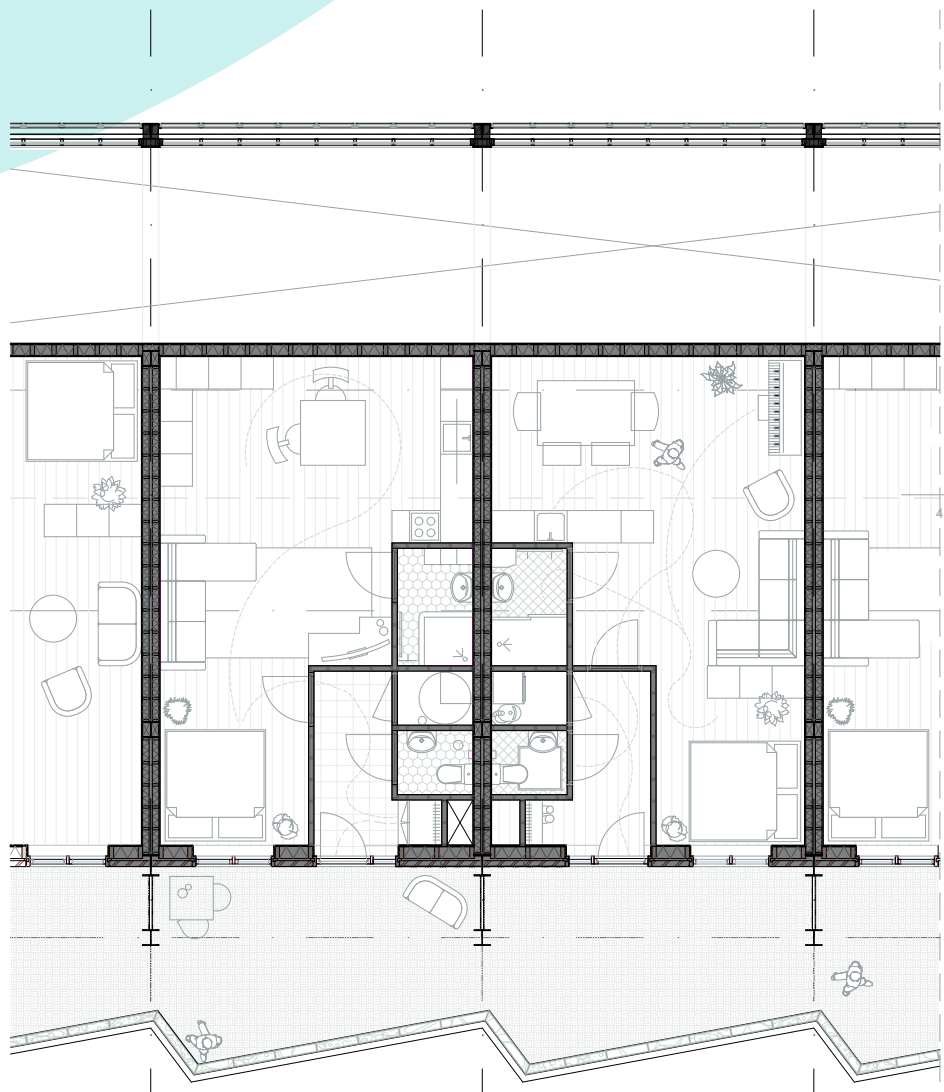
The new redevelopment plans for Shipyard Neptune repair focuses on fostering as well as the physical structures as the immaterial values of the site. The new plan integrates demolish only what is necessary, reuse as much as possible and re-interpret to accomodate the new function. The challenge lays within the boundaries of accommodating a complete new function, thus introducing a connected green neighbourhood within the boundaries of an industrial site. The neighbourhood fosters divers typologies to integrate new users. From a tiny house village, water related dwellings to comunal housing. The green park connects the site and beyond. The project focused mainly on designing the courtyard. This exists within the existing structures, introducing some demolition, like the big hall, reuse within the steel structure that is added to accommodate the courtyard and reinterpretation to foster a sense of the industrial past. The courtyard functions as a comunal space inbetween with an open roof structure revealing the precious steel frames that once shaped the big open welding hall. The existing helps shaping the future, which allows to create new typologies within new spaces.



First floorplan - 1:200



Second floorplan - 1:200

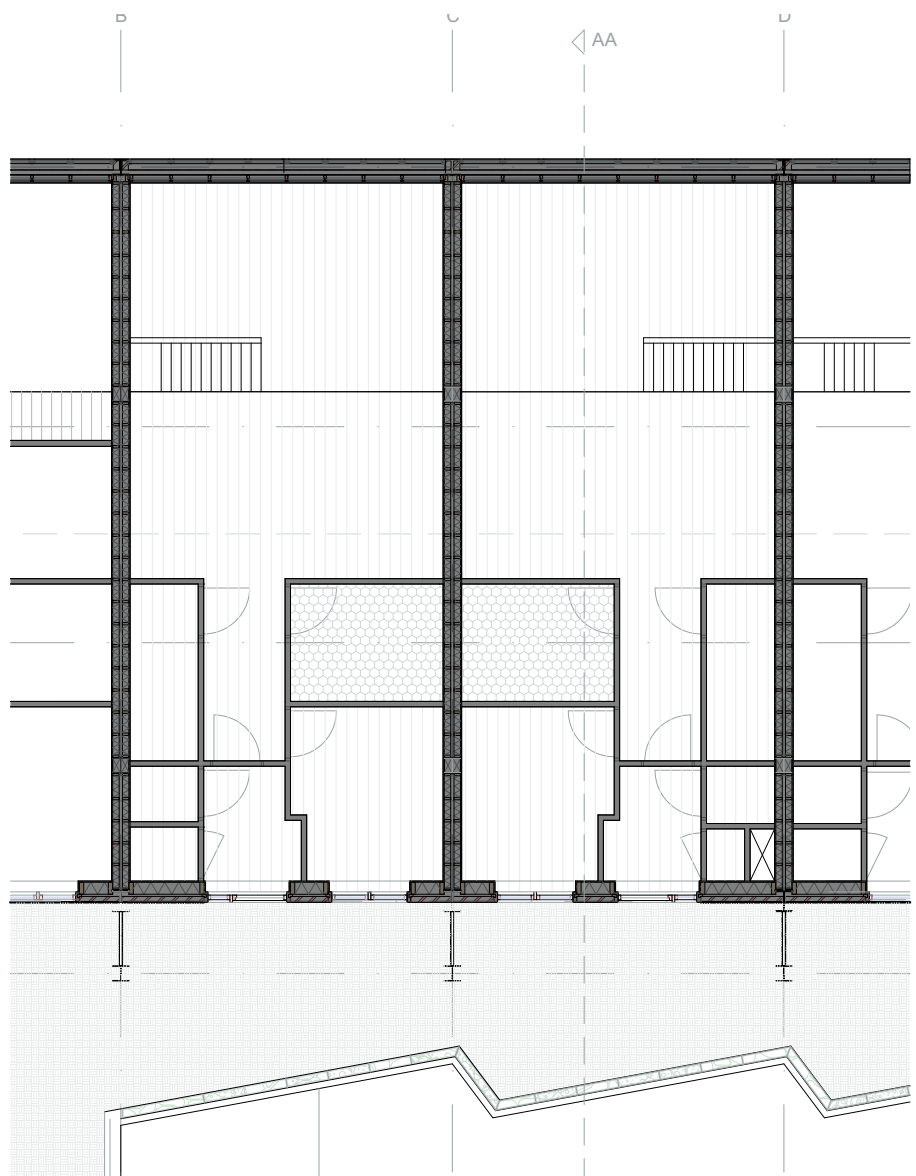


Deel A - 53 m2
9 x appartement

1:100

Deel C - 100 m2
3 x two bedroom-apartment

1:100



Deel A - 75 m2
3 x two floor-apartment

1:100

Deel C - 67 m2
14 x friends-apartment

1:100

