

Two-dimensional vehicular movement modelling at intersections based on optimal control

Zhao, Jing; Knoop, Victor L.; Wang, Meng

DOI

[10.1016/j.trb.2020.04.001](https://doi.org/10.1016/j.trb.2020.04.001)

Publication date

2020

Document Version

Final published version

Published in

Transportation Research Part B: Methodological

Citation (APA)

Zhao, J., Knoop, V. L., & Wang, M. (2020). Two-dimensional vehicular movement modelling at intersections based on optimal control. *Transportation Research Part B: Methodological*, 138, 1 - 22.
<https://doi.org/10.1016/j.trb.2020.04.001>

Important note

To cite this publication, please use the final published version (if applicable).
Please check the document version above.

Copyright

Other than for strictly personal use, it is not permitted to download, forward or distribute the text or part of it, without the consent of the author(s) and/or copyright holder(s), unless the work is under an open content license such as Creative Commons.

Takedown policy

Please contact us and provide details if you believe this document breaches copyrights.
We will remove access to the work immediately and investigate your claim.



Two-dimensional vehicular movement modelling at intersections based on optimal control

Jing Zhao^{a,b,*}, Victor L. Knoop^b, Meng Wang^b

^a Department of Traffic Engineering, University of Shanghai for Science and Technology, Shanghai, China

^b Transport & Planning, Delft University of Technology, Delft, Netherlands



ARTICLE INFO

Article history:

Received 17 September 2019

Revised 8 February 2020

Accepted 3 April 2020

Keywords:

Traffic flow model

Intersections

Optimal control

Vehicular trajectory

ABSTRACT

Modeling traffic flow at intersections is essential for the design, control, and management of intersections. A challenging feature of microscopic modeling vehicular movement at intersections is that drivers can choose among an infinite number of alternative traveling paths and speeds. This makes it fundamentally different from structured straight road sections with lanes. This study proposes a novel method to model the trajectories of vehicles in two-dimensional space and speed. Based on optimal control theory, it assumes drivers schedule their driving behavior, including the steering and acceleration, to minimize the predicted costs. The costs contain the running costs, which consist of the travel time and driving smoothness (longitudinally and laterally), and the terminal cost, which penalizes the deviations from the desired final state. Different than conventional methods, the vehicle motion dynamics are formulated in distance rather than in time. The model is solved by an iterative numerical solution algorithm based on the Minimum Principle of Pontryagin. The descriptive power, plausibility, and accuracy of the proposed model are investigated by comparing the calculated results under several cases, which can be solved from symmetry or analytically. The proposed model is further calibrated and validated using empirical trajectory data, and the quality of the predicted trajectory is confirmed. Qualitatively, the optimal trajectory changes in the range of the shortest path and smoothest path under different weights of the running cost. The proposed model can be used as a starting point and extended with more considerations of intersection operation in the real world for future applications.

© 2020 The Author(s). Published by Elsevier Ltd.
This is an open access article under the CC BY license.
(<http://creativecommons.org/licenses/by/4.0/>)

1. Introduction

Modeling the traffic flow with a realistic description of the vehicular movement is essential in the design, control, and management of intersections, and more generally at weakened lane or lane-free road space. Modeling tools can help infrastructure designers to evaluate the safety and efficiency performance of different design schemes and to refine and optimize the schemes.

* Corresponding author.

E-mail address: jing_zhao_traffic@163.com (J. Zhao).

Since the 1950s, many traffic flow models have been established to analyze various complex traffic phenomena, which can be divided into two groups: microscopic models and macroscopic models. The microscopic traffic flow model for an intersection is an important method to explore the mechanism of the influencing factors on the microscopic traffic operations. In various previous studies, the interaction between vehicles and the caused traffic flow changes were analyzed in-depth with the consideration of both internal and external influencing factors (Brackstone and McDonald, 1999; Gipps, 1981; Rahman et al., 2013; Zheng, 2014).

In literature, the methods in modeling the microscopic vehicular traffic flow at intersections mainly include four categories, including car-following models, cellular automata models, social force theory models, and optimal control models. The following paragraphs made a brief review of the existing studies in that order.

For the car-following model at intersections, the existing studies mainly focus on the effect of signal control and traffic management on the car-following behavior. Ahn et al. (2004) verified Newell (2002)'s simple car-following by comparing with the time-space trajectory of discharging vehicles at signalized intersections. Sasaki and Nagatani (2003) studied the traffic flow on a single-lane roadway with the consideration of signal control based on the optimal velocity model, in which three signal control strategies were analyzed: the simple synchronized, green wave, and random switching strategies. Tang et al. (2008) extended the full velocity difference (FVD) model (Jiang et al., 2001) to explore the effect of signal control on the traffic flow at the intersections, including the traffic clustering, dissipating, and the propagation of stopping and starting wave. Yu and Shi (2014) proposed an extended car-following model at signalized intersections considering the acceleration of two leading cars based on the FVD model. The model was calibrated and verified with field data. They (Yu and Shi, 2015) also analyzed the impacts of the green signal countdown device on car-following behaviors during the phase-change periods. On this basis, Tang et al. (2017a) modeled the driving behavior at signalized intersections with the information of remaining green time. The influence of signal control on the aggregation and dissipation of traffic flow is studied. With the improvement of the automation and communication technology, some studies analyzed its effect on the car-following behavior at intersections (Hoogendoorn et al., 2014). Zhao and Li (2016) proposed a car-following model with the consideration of speed guidance at intersections. The effects of the speed guidance on two different vehicle types, namely intelligent vehicles and traditional vehicles, were discussed. Tang et al. (2017b) also proposed a speed guidance model to reflect the drivers' rationality on reducing the fuel consumption and emissions at the signalized intersection. Three parameters, including the response time, acceptance threshold value, and execution level, were considered. However, in these car-following models, vehicles have to run along the given traffic lane.

For the cellular automata (CA) model, it can be used to model the heterogeneity of vehicles and the complex interactions at intersections (Tonguz et al., 2009). Several models were developed for the unsignalized intersection to describe the conflicts between the vehicles from two crossing streets (Foulaadvand and Belbasi, 2007; Li et al., 2009; Ruskin and Wang, 2002). The CA model can be used to analyze the operational efficiency and safety of the intersection. E.g., from the running efficiency aspect, Spyropoulou (2007) discussed the inherit model properties and their dynamics in respect to the model produced saturation flow at signalized intersections; and from the running safety aspect, Chai and Wong (2014) established a CA model to simulate vehicular interactions involving left-turn vehicles. The relationships between conflict occurrences with traffic volume and left-turn movement control strategies are analyzed. Chai and Wong (2015) further proposed a fuzzy cellular automata model at signalized intersections by combining the cellular automata and fuzzy logic, which is able to replicate decision-making processes of driver. The CA model was also used to simulate the mixed traffic flow at intersections. Zhao et al. (2007) simulated the mixed traffic flow of the right-turning vehicle and the straight-going bicycle, in which the delay rules of the bicycle through vehicle, the gap rules of vehicle through bicycle, and the disposal rules of the occupied conflict zone were considered. Vasic and Ruskin (2012) simulated combined car and bicycle traffic at intersections. The conflicts between cars and bicycles were presented and analyzed. Tang et al. (2018) established a cellular automata model to describe the lane-changing and retrograde behaviors of electric bicycles near a signalized intersection, and to analyze the impacts on the signalized intersection congestions. The effect of the newly developed automation and communication technologies were also discussed using the CA model. Zhu and Ukkusuri (2018) proposed a cell-based simulation approach for describing the proactive driving behavior of connected vehicles at the signalized intersections. The effects of connected vehicles on smoothing the traffic flow and reducing the vehicular emission were analyzed. However, since the lattice of cells has equal size, vehicles have to run along the given tracks of cells.

To describe the vehicular movement in the inner area of the intersection, the description model should be two-dimensional. Several works have been done using various methods based on the granular flow concept (Helbing et al., 2005; Hoogendoorn and Daamen, 2005). One approach is to extend the traditional one-dimensional car-following model to a two-dimensional model. Nakayama et al. (2005) constructed a two-dimensional optimal velocity model for pedestrians. Pedestrians are treated as identical particles moving in the two-dimensional space, and each particle decides its optimal velocity depending on distances to other particles. On this basis, Xie et al. (2009) proposed a two-dimensional car-following model to describe the mixed traffic flow at unsignalized intersections. The interaction between a vehicle and other motorized/non-motorized vehicles were considered. Another approach is the social force-based model, which can be applied to describe the pedestrian flow (Zeng et al., 2014), cyclist flow (Huang et al., 2017) and vehicular flow (Ma et al., 2017b) at intersections. Ma et al. (2017a) proposed a three-layered "plan-decision-action" model to simulate the moving of turning vehicles at mixed-flow intersections and further used the social force model to generate vehicle movements in the operation layer (Ma et al., 2017b). Moreover, several social force-based vehicle moving models were established to simulate the vehicular traffic flow with the consideration of no lane division (Fellendorf et al., 2012; Huynh et al., 2013; Yang et al., 2018). The tra-

jectory is obtained by the comprehensive result of several types of forces, such as the self-driven force, the repulsive force, the attractive force, and other forces for specific conditions.

Moreover, the results of the optimal trajectory guidance for autonomous vehicles also describe the vehicular movement at intersections. Numerous works considered the optimal trajectory guidance for autonomous vehicles traversing crossing the intersection. Some studies focused on establishing cooperative vehicle intersection control algorithms to enable autonomous vehicles to pass the intersection cooperatively without traffic signals (Ahmane et al., 2013; Lee and Park, 2012; Yu et al., 2019), while some others aimed to optimize the vehicular trajectory under the consideration of the signal control (Jiang et al., 2017; Kamalanathsharma et al., 2015) or to optimize of the trajectory and signal control in a unified framework (Feng et al., 2018; Liu et al., 2019; Xu et al., 2018; Yu et al., 2018). Dresner and Stone (2004) propose a reservation-based system at intersections under the condition of fully autonomous vehicles. The system aims to maximize the efficiency of moving cars through intersections with 0 probability of collisions. The reservation-based method was further enhanced to improve various operational issues (Dresner and Stone, 2008; Li et al., 2013). Medina et al. (2015) developed a cooperative intersection control method by defining a virtual intervehicle distance between vehicles driving on different lanes. Based on the virtual platooning concept, the model can guide the vehicles to cross the intersection safely. Zohdy and Rakha (2016) developed a system, namely iCACC (intersection cooperative adaptive cruise control), to optimize the movement of CACC equipped vehicles with the objective of minimizing the intersection delay while ensuring operational safety. Li et al. (2019) proposed a speed guidance algorithm for automated vehicles to ensure safety and operation efficiency at intersections. The trajectories of automated vehicles were formulated in a 3-dimensional way, in which the vehicle width and length and time continuity were considered. Guo et al. (2019) further proposed an algorithm to optimize the trajectories of automated vehicle and signal control simultaneously for best system performance in terms of travel time, fuel consumption, and safety. However, in these models, the vehicular trajectories are assumed to be along the predetermined traffic lanes. Bichiou and Rakha (2018) developed a novel algorithm is to obtain an optimal solution for each possible scenario a vehicle may encounter while crossing an intersection. The detailed motion of the vehicle and the constraints on avoiding collisions were considered (Fadhoun and Rakha, 2019; Rakha et al., 2001, 2009). The promising benefits of the algorithm in reducing delay and emissions were analyzed by comparing it with other intersection control strategies. The algorithm was further simplified to make it practical for real-time implementations (Bichiou and Rakha, 2019). These models also use time as the main independent variable. The control inputs are the rate of change of the velocity and its vector orientation, which are appropriate for vehicle control. However, drivers cannot change the angular velocity of the vehicle directly, but they can adapt their steering wheel angle, which changes the curvature of the trajectory.

Compared to the urban street segments or freeways, a challenging feature of microscopic modeling vehicular movement at the inner area of intersections is that drivers can choose among an infinite number of alternative running paths and speeds according to their desires. The traditional microscopic models are lane-based (Munigety and Mathew, 2016; Rahman et al., 2013), i.e., vehicles should travel in a pre-determined traffic lane or move from one lane to another, which may not accord with the fact that the concept of the traffic lane is significantly weakened at the inner area of intersections. Some newly proposed methods, including the two-dimensional car-following model, the social force-based model, and the optimal trajectory guidance model, have the possibility of describing the two-dimensional moving process of vehicles. However, the trajectory is not obtained directly from the behavior of drivers, such as turning the steering wheel and pushing the brake or throttle pedals. Therefore, it is still a challenge to make a realistic description of the vehicular trajectory driven by the human driver at intersections.

The motivation of the paper is to model the trajectory of the manual driving vehicle at intersections, where structured lanes are absent. A two-dimensional vehicular movement model is proposed based on optimal control. In methodology, the study incorporates both steering and acceleration as model inputs and chooses the travelled distance as the main independent variable instead of a more intuitive variable – time. In this way, the longitudinal and lateral controls are decoupled. That means that a particular heading angle as a function of the distance leads, independent of the acceleration function, to a particular path in space. Therefore, the model resembles human driving inputs, consisting of steering (steering wheel) and longitudinal acceleration (pedals). The model is solved by an iterative numerical solution algorithm based on the Minimum Principle of Pontryagin. The descriptive power, plausibility, and accuracy of the proposed model are validated by comparing the calculated results for several cases with expected or analytically calculated results. Determining the exact trajectory can help the researchers and engineers to evaluate the intersection design and control scheme more accurately. For example, based on the proposed model, the distribution of the moving trajectory can be obtained under different design schemes. Furthermore, the proposed model can be used in the microscopic simulation software to improve the reality of the result, instead of predetermining the running path.

The article is organized as follows. Section 2 establishes the utility-based two-dimensional vehicular movement model. Section 3 analyzes two specific conditions, namely the fastest path and the smoothest path. Section 4 validates the descriptive power, plausibility, accuracy, and the quality of the predicted trajectory of the proposed model. Section 5 discusses the expansion of the model with some considerations of the operation in the real world. Section 6 summarizes the research results and discusses future research directions.

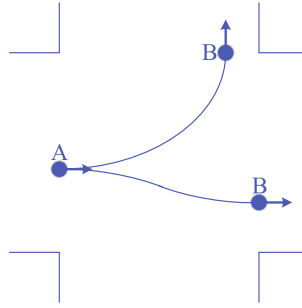


Fig. 1. Problem description.

2. Optimal vehicular movement model formulation

At intersections, vehicles move from an approach lane to an exit lane, as shown in Fig. 1. In continuous space, an infinite number of paths from origin to destination is possible. In this research, we assume that the driver will minimize the predicted disutility/cost while simultaneously choosing the path and speed. The remainder of this section describes this problem; we first define the modeling variables, then the cost functions, followed by constraints and the solution algorithm.

2.1. Vehicle motion dynamics

We define state X as a function of the distance traveled (s) by the subject vehicle; the state contains the x-coordinate $x(s)$, y-coordinate $y(s)$, the heading angle $\theta(s)$, and the pace $p(s)$, i.e., the reciprocal of the vehicular velocity, as shown in Eq. (1). Choosing the travelled distance (s) as the main independent variable compared to a more intuitive variable – time has considerable advantages. First, the longitudinal and lateral controls are decoupled. That means that a particular steering function as function of s leads, independent of the acceleration function, to a particular path in space. Moreover, within this lateral movement, the concept of the $\frac{d\theta}{ds}$ is equal to the curvature of the path of the vehicle.

$$\mathbf{X}(s) = \begin{bmatrix} x(s) \\ y(s) \\ \theta(s) \\ p(s) \end{bmatrix} \quad (1)$$

where, \mathbf{X} denotes the state of a vehicle at moving distance s ; x and y are the plane coordinate of a vehicle at moving distance s , in m; θ is the heading angle at moving distance s , in rad; p is pace, i.e., the reciprocal of the velocity of a vehicle at moving distance s , in s/m.

In this study, it is assumed that the initial and desired terminal states are given. The initial state of a vehicle \mathbf{X}_0 is described with:

$$\mathbf{X}_0 = \begin{bmatrix} x_0 \\ y_0 \\ \theta_0 \\ p_0 \end{bmatrix} \quad (2)$$

while the desired terminal state of the vehicle \mathbf{X}_D is described with Eq. (3), in which the terminal pace is free:

$$\mathbf{X}_D = \begin{bmatrix} x_D \\ y_D \\ \theta_D \end{bmatrix} \quad (3)$$

To describe the trajectory choice behavior, the driver uses a utility model to estimate and predict the trajectory costs. Then, the driver will determine his future state using the state prediction model (the system dynamics), which can be expressed by Eq. (4). According to Eq. (4), κ and α constitute the control \mathbf{U} , as shown in Eq. (5). The control variable κ can be seen as the control of the steering wheel, while another control variable α can be seen as the control of the brake or

throttle pedals. In this way, we control the vehicle as the human driver does.

$$\frac{d}{ds} \mathbf{X} = \frac{d}{ds} \begin{bmatrix} x \\ y \\ \theta \\ p \end{bmatrix} = \begin{bmatrix} \cos \theta \\ \sin \theta \\ \kappa \\ \alpha \end{bmatrix} \quad (4)$$

where, κ is the curvature (reciprocal of the turning radius) of a trajectory at moving distance s , in rad/m; α is the parameter indicating the acceleration of a vehicle at moving distance s , in m/s^2 , a positive value indicates decelerating, a negative value indicates accelerating.

$$\mathbf{U} = \begin{bmatrix} \kappa \\ \alpha \end{bmatrix} \quad (5)$$

where, \mathbf{U} denotes the control vector of a vehicle at moving distance s .

2.2. Moving cost

Consider the control \mathbf{U} for a trajectory from the initial state \mathbf{X}_0 to the actual terminal state \mathbf{X}_f . Given the control function $\mathbf{U}(s)$, the state of the vehicle along the full trajectory can be determined, which will also yield the disutility (cost), as shown in Eq. (6).

$$C(\mathbf{X}, \mathbf{U}) = K(s_f, \mathbf{X}_f) + \int_{s_0}^{s_f} L(s, \mathbf{X}, \mathbf{U}) ds \quad (6)$$

In this equation, K denotes the terminal cost, which reflects the costs at the end of the trajectory; s_f denotes the moving distance at the end of the trajectory; \mathbf{X}_f denotes the actual terminal state; L denotes the running cost, which reflects the costs occurring during a trajectory. We will now elaborate on these costs.

2.2.1. Composition of terminal cost

The aim of the terminal cost K is to get a trajectory close to the desired position and heading angle. In this line, the terminal cost can be specified as Eq. (7) where deviations of the actual final state (indicated with subscript f) from the desired final state (indicated with subscript D), induce cost:

$$K = \frac{1}{2} b \left((x_f - x_D)^2 + (y_f - y_D)^2 + (\theta_f - \theta_D)^2 \right) \quad (7)$$

In this equation, b denotes the relative weights of the terminal cost, which can be set as a relatively large number to ensure the vehicles reach the desired final state (position and angle).

2.2.2. Composition of running cost

The running cost L reflects the different cost aspects considered by the drivers during driving. We model it as a sum of different elements:

$$L = \sum \beta_j L_j \quad (8)$$

where, L_j denotes the contribution of the cost aspect j ; β_j denotes the relative weights of the running cost aspect j .

We will consider 3 running cost terms. Firstly, the travel time of the trajectory is one of the contributing costs. This is formulated as Eq. (9). Since the pace is integrated (Eq. (6)) over the trajectory, this yields the travel time to the final position.

$$L_1 = p \quad (9)$$

The remaining two terms reflect the driving smoothness. Drivers might not prefer to drive with a sharp turn, nor prefer to drive with frequent acceleration and braking. The degree of the driving smoothness is defined as a quadratic function of the vehicular lateral acceleration (centripetal acceleration) and longitudinal acceleration, as shown in Eqs. (10) and (11), respectively.

$$L_2 = \frac{1}{2} a_c^2 = \frac{1}{2} (\kappa p^{-2})^2 = \frac{1}{2} \kappa^2 p^{-4} \quad (10)$$

$$L_3 = \frac{1}{2} a_l^2 = \frac{1}{2} (-\alpha p^{-3})^2 = \frac{1}{2} \alpha^2 p^{-6} \quad (11)$$

where, a_c is the vehicular lateral acceleration, in m/s^2 ; a_l is the vehicular longitudinal acceleration, in m/s^2 .

2.3. Constraints

To conform to reality, the running speed, the curvature, and the acceleration should be limited according to the traffic rule and the characteristic of a vehicle. The running speed should be restricted within a reasonable minimum and maximum speed limitation, and the reversing is prohibited, as shown in Eq. (12). The curvature of a moving path is bounded by a given minimum turning radius, as shown in Eq. (13). The other control variable α that indicating the vehicular acceleration should also be in a reasonable range, as shown in Eq. (14). Please note that the proposed model aims at generating motions in 2-dimensional space and time with a minimal set of parameters that can be used to describe traffic operations at intersections. In regular human driving, the limits of the vehicular physical capabilities are not reached. Therefore, the simplified vehicle constraints on its motion are considered in our work; this might differ for automated driving.

$$\frac{1}{v_{\max}} \leq p \leq \frac{1}{v_{\min}} \quad (12)$$

$$-\frac{1}{r_{\min}} \leq \kappa \leq \frac{1}{r_{\min}} \quad (13)$$

$$\alpha_{\min} \leq \alpha \leq \alpha_{\max} \quad (14)$$

where, v_{\max} and v_{\min} are the speed limitation, in m/s; r_{\min} is the minimum turning radius of a vehicle, in m; α_{\min} and α_{\max} are the minimum and maximum value of α , in s/m^2 .

2.4. Solution

In this section, we describe the solution method. An iterative numerical solution algorithm was used based on the Minimum principle of Pontryagin.

2.4.1. Minimum principle of Pontryagin

The utility optimization paradigm implies that the drivers will choose the control that can minimize the total cost, which is a function of the initial state, the desired terminal state, and the control. Let \mathbf{U}^* denotes the optimal control to minimize the predicted cost, as shown in Eq. (15). Let C^* denotes the value function of the cost of a vehicle when the optimal control \mathbf{U}^* is used, as shown in Eq. (16).

$$\mathbf{U}^* = \arg \min C(\mathbf{X}, \mathbf{U}) \quad (15)$$

$$C^* = \min_{\mathbf{U}} C(\mathbf{X}, \mathbf{U}) = C(\mathbf{X}, \mathbf{U}^*) \quad (16)$$

The minimum principle of Pontryagin is used to solve the optimal control problem. The method entails defining the Hamiltonian \mathcal{H} , as shown in Eq. (17), which can be specified as Eq. (18).

$$\mathcal{H}(s, \mathbf{X}, \mathbf{U}, \boldsymbol{\lambda}) = L(s, \mathbf{X}, \mathbf{U}) + \boldsymbol{\lambda}' f(s, \mathbf{X}, \mathbf{U}) \quad (17)$$

$$\mathcal{H} = \beta_1 p + \frac{1}{2} \beta_2 \kappa^2 p^{-4} + \frac{1}{2} \beta_3 \alpha^2 p^{-6} + \lambda_1 \cos \theta + \lambda_2 \sin \theta + \lambda_3 \kappa + \lambda_4 \alpha \quad (18)$$

where \mathcal{H} denotes the Hamiltonian; $\boldsymbol{\lambda}'$ is the transpose of $\boldsymbol{\lambda}$, which denotes the so-called co-state or marginal cost of the state \mathbf{X} . These costs reflect the relative extra cost due to making a small change $\Delta \mathbf{X}$ on the state \mathbf{X} . λ_1 , λ_2 , λ_3 , and λ_4 are the co-states corresponding to the four elements of the state vector x , y , θ , and p , respectively.

Using the Hamiltonian, we can derive the following necessary condition for the optimal control \mathbf{U}^* :

$$\mathcal{H}(s, \mathbf{X}, \mathbf{U}^*, \boldsymbol{\lambda}) \leq \mathcal{H}(s, \mathbf{X}, \mathbf{U}, \boldsymbol{\lambda}) \quad (19)$$

For the running cost function shown in Eq. (7), using the necessary condition (19) we can find the expression for the optimal control, as shown in Eqs. (20)-(21).

$$\frac{\partial \mathcal{H}}{\partial \kappa} = 0 \Rightarrow \kappa = -\frac{\lambda_3 p^4}{\beta_2} \quad (20)$$

$$\frac{\partial \mathcal{H}}{\partial \alpha} = 0 \Rightarrow \alpha = -\frac{\lambda_4 p^6}{\beta_3} \quad (21)$$

Moreover, for the co-state $\boldsymbol{\lambda}$, we can determine the costate dynamics as shown in Eq. (22), subject to the terminal conditions at the end of the control horizon, as shown in Eq. (23). Then, we get specific co-state dynamics, as shown in Eq. (24), and the transversal conditions, as shown in Eq. (25).

$$-\frac{d\boldsymbol{\lambda}}{ds} = \frac{\partial \mathcal{H}}{\partial \mathbf{X}} = \frac{\partial L}{\partial \mathbf{X}} + \boldsymbol{\lambda}' \frac{\partial f}{\partial \mathbf{X}} \quad (22)$$

$$\lambda(s_f) = \frac{\partial K}{\partial \mathbf{X}}(s_f, \mathbf{X}_f) \tag{23}$$

$$\frac{d\lambda}{ds} = \begin{cases} \frac{d\lambda_1}{ds} = -\frac{\partial \mathcal{H}}{\partial x} = 0 \\ \frac{d\lambda_2}{ds} = -\frac{\partial \mathcal{H}}{\partial y} = 0 \\ \frac{d\lambda_3}{ds} = -\frac{\partial \mathcal{H}}{\partial \theta} = \lambda_1 \sin \theta - \lambda_2 \cos \theta \\ \frac{d\lambda_4}{ds} = -\frac{\partial \mathcal{H}}{\partial p} = -\beta_1 + 2\beta_2 \kappa^2 p^{-5} + 3\beta_3 \alpha^2 p^{-7} \end{cases} \tag{24}$$

$$\lambda(s_f) = \begin{cases} \lambda_1(s_f) = \frac{\partial K}{\partial x} = b(x_f - x_D) \\ \lambda_2(s_f) = \frac{\partial K}{\partial y} = b(y_f - y_D) \\ \lambda_3(s_f) = \frac{\partial K}{\partial \theta} = b(\theta_f - \theta_D) \\ \lambda_4(s_f) = \frac{\partial K}{\partial p} = 0 \end{cases} \tag{25}$$

2.4.2. Iterative numerical solution algorithm

To solve the model mentioned above, we present a numerical solution. This solution approach is based on iteratively solving the state dynamic equation forward in the distance, and subsequently solving the co-state equation backward in the distance (Hoogendoorn et al., 2012; Wang et al., 2012). The following procedure summarizes the algorithm:

Step 1: Initialization. Input the initial and desired terminal states (X_0 and X_D), choose the adjustment factor γ (0.999 is set as the initial value, and it can be dynamically enlarged when the algorithm cannot converge), set the iteration number $n = 1$, set the initial co-state $\Lambda^0 = 0$, and set the control step.

Step 2: Solve the state dynamic equation forward in time according to Eqs. (2), (4), (20) and (21). Go to step 3.

Step 3: Solve the co-state dynamic equation backward in time according to Eqs. (22) and (23). Go to step 4.

Step 4: Update the effective co-state according to Eq. (26). Go to step 5.

$$\Lambda^n = \gamma \Lambda^{n-1} + (1 - \gamma \lambda^n) \tag{26}$$

Step 5: Stopping criteria. The iteration will be stopped if the difference of the co-states of the backward and forward is less than the threshold ξ (0.1 is set), as shown in Eq. (27); otherwise, set $n = n + 1$, and go back to step 2.

$$\|\Lambda^n - \lambda^n\| < \xi \tag{27}$$

3. Specific condition analysis

The iterative numerical solution algorithm is applicable for a wide range of conditions, but the result is an approximate one because the precision of the control step and convergence threshold is limited. In this section, we solve the proposed model analytically under some specific conditions. Two specific conditions will be analyzed, namely the fastest path and the smoothest path. The numerical algorithm results will be compared and verified with the analytical results in Section 4. This will yield a face validation for the solution method.

3.1. The fastest path

In this case, the expected travel time is the only running cost considered. Therefore, the Hamiltonian function is specified as Eq. (28), and the co-state dynamics as Eq. (29). We can derive the necessary condition (19) for optimal control.

To minimize the Hamiltonian, for the curvature (κ), either one of the following two cases holds. (1) Case one: curvature $\frac{\partial \mathcal{H}}{\partial \kappa} = \lambda_3 = 0$. Then, $\frac{d\lambda_3}{ds} = \lambda_1 \sin \theta - \lambda_2 \cos \theta = 0$, according to Eq. (29). We also know $\frac{d\lambda_1}{ds} = 0$ and $\frac{d\lambda_2}{ds} = 0$, which indicate that λ_1 and λ_2 are constants, according to Eq. (29). Then, the path is a line segment with heading angle $\theta = \arctan \frac{\lambda_2}{\lambda_1}$. Therefore, the curvature should equal to 0 ($\kappa = 0$). (2) Case two: $\frac{\partial \mathcal{H}}{\partial \kappa} \neq 0$. Then, in order to minimize the \mathcal{H} shown in Eq. (28), we should minimize $\lambda_3 \kappa$. Therefore, we should select the boundary of the curvature ($\kappa = \pm \frac{1}{r_{\min}}$) according to the plus-minus sign of the λ_3 , as shown in Eq. (30).

For the control variable of acceleration (α), we should minimize $\lambda_4 \alpha$. According to Eq. (29), we get $\frac{d\lambda_4}{ds} = -\beta_1 < 0$. Meanwhile, we have the terminal state of $\lambda_4(s_f) = 0$ according to Eq. (25). This means λ_4 is always nonnegative ($\lambda_4 \geq 0$). The optimal control of α should select the minimal value under the constraints Eqs. (12) and (14), as shown in Eq. (31).

In summary, Eqs. (30)-(31) is the analytical solution of the proposed model under the condition of the fastest path. The conclusion is that the optimal control of the fastest path is the concatenation of the given maximum curvature ($\kappa = \pm \frac{1}{r_{\min}}$)

and fixed heading angle θ with the curvature equals to 0 ($\kappa = 0$) with the maximum acceleration (the minimum value of α) under the restrictions of the speed and acceleration. This conclusion will be used to validate the plausibility of the numerical algorithm results in Section 4.2 (see the red line in Fig. 3(g) and (i)). Moreover, based on the analytical solution, the accuracy of the numerical algorithm results will be verified in Section 4.3 (see Table 3).

$$\mathcal{H} = \beta_1 p + \lambda_1 \cos \theta + \lambda_2 \sin \theta + \lambda_3 \kappa + \lambda_4 \alpha \quad (28)$$

$$\frac{d\lambda}{ds} = \begin{cases} \frac{d\lambda_1}{ds} = -\frac{\partial \mathcal{H}}{\partial x} = 0 \\ \frac{d\lambda_2}{ds} = -\frac{\partial \mathcal{H}}{\partial y} = 0 \\ \frac{d\lambda_3}{ds} = -\frac{\partial \mathcal{H}}{\partial \theta} = \lambda_1 \sin \theta - \lambda_2 \cos \theta \\ \frac{d\lambda_4}{ds} = -\frac{\partial \mathcal{H}}{\partial p} = -\beta_1 \end{cases} \quad (29)$$

$$\kappa = \begin{cases} \frac{1}{r_{\min}}, & \lambda_3 < 0 \\ -\frac{1}{r_{\min}}, & \lambda_3 > 0 \\ 0, & \lambda_3 = 0 \end{cases} \quad (30)$$

$$\alpha = \begin{cases} \alpha_{\min}, & p + \alpha_{\min} ds \geq \frac{1}{v_{\max}} \\ \frac{1}{\frac{1}{v_{\max}} - p}, & p + \alpha_{\min} ds < \frac{1}{v_{\max}} \end{cases} \quad (31)$$

3.2. The smoothest path

In this case, the driving smoothness is the only running cost considered. Therefore, the Hamiltonian function turns to be Eq. (32), and the co-state dynamics turns to be Eq. (33). Then, using the necessary condition (19), the expression for the optimal control for the curvature (κ) and the acceleration (α) can be drawn, as shown in Eqs. (34) and (35), respectively.

They are the same as Eqs. (20)–(21), which is very difficult to obtain a full analytical solution. However, we can still analyze some general results for the control variable of acceleration (α). We get $\frac{d\lambda_4}{ds} \geq 0$ according to Eq. (33), because β_2 , β_3 , κ^2 , α^2 , and p are all non-negative. It means the value of λ_4 will not decrease. Meanwhile, we have the terminal value of $\lambda_4(s_f) = 0$ according to Eq. (25). Therefore, λ_4 should be no larger than 0 ($\lambda_4 \leq 0$). Additionally, β_3 and p are larger than 0. Then, $\alpha = -\frac{\lambda_4 p^6}{\beta_3}$ is nonnegative, as shown in Eq. (36).

Therefore, a partial analytical solution can be drawn that the optimal control of α is nonnegative under the smoothest path condition, as shown in Eq. (36). The conclusion is that the optimal control of the smoothest path is decelerating or keeping the same speed. This conclusion will be used to validate the plausibility of the numerical algorithm results in Section 4.2 (see the red line in Fig. 3(i)).

$$\mathcal{H} = \frac{1}{2} \beta_2 \kappa^2 p^{-4} + \frac{1}{2} \beta_3 \alpha^2 p^{-6} + \lambda_1 \cos \theta + \lambda_2 \sin \theta + \lambda_3 \kappa + \lambda_4 \alpha \quad (32)$$

$$\frac{d\lambda}{ds} = \begin{cases} \frac{d\lambda_1}{ds} = -\frac{\partial \mathcal{H}}{\partial x} = 0 \\ \frac{d\lambda_2}{ds} = -\frac{\partial \mathcal{H}}{\partial y} = 0 \\ \frac{d\lambda_3}{ds} = -\frac{\partial \mathcal{H}}{\partial \theta} = \lambda_1 \sin \theta - \lambda_2 \cos \theta \\ \frac{d\lambda_4}{ds} = -\frac{\partial \mathcal{H}}{\partial p} = 2\beta_2 \kappa^2 p^{-5} + 3\beta_3 \alpha^2 p^{-7} \end{cases} \quad (33)$$

$$\frac{\partial \mathcal{H}}{\partial \kappa} = 0 \Rightarrow \kappa = -\frac{\lambda_3 p^4}{\beta_2} \quad (34)$$

$$\frac{\partial \mathcal{H}}{\partial \alpha} = 0 \Rightarrow \alpha = -\frac{\lambda_4 p^6}{\beta_3} \quad (35)$$

$$\alpha \geq 0 \quad (36)$$

Table 1
Tested cases.

Scenario	Movement	Initial state	Desired terminal state	Scenario	Movement	Initial state	Desired terminal state
A	U-turn	[0, 6, 0, 1/8]	[0, 16, π]	I	Left-turn	[0, 6, 0, 1/8]	[10, 10, $\pi/8$]
B	Left-turn		[2, 16, $9\pi/10$]	J	Through		[10, 8, 0]
C	Left-turn		[4, 16, $4\pi/5$]	K	Through		[10, 6, 0]
D	Left-turn		[6, 16, $7\pi/10$]	L	Through		[10, 4, 0]
E	Left-turn		[8, 16, $3\pi/5$]	M	Right-turn		[10, 2, $-\pi/8$]
F	Left-turn		[10, 16, $\pi/2$]	N	Right-turn		[10, 0, $-\pi/4$]
G	Left-turn		[10, 14, $3\pi/8$]	O	Right-turn		[8, 0, $-3\pi/8$]
H	Left-turn		[10, 12, $\pi/4$]	P	Right-turn		[6, 0, $-\pi/2$]

Table 2
Input parameter for model validation.

Parameter	Value
Boundary of the speed, v_{\min} and v_{\max}	5 m/s and 12 m/s
Minimum turning radius, r_{\min}	4 m
Boundary of the α , α_{\min} and α_{\max}	-0.01 s/m^2 and 0.01 s/m^2
Weight of the terminal cost, b	100 s/m^2
Weight of the running cost, β_1 , β_2 , and β_3	1, 0.001 s^5/m^3 , and 0.01 s^5/m^3
Precision of the path (control step)	0.1 m
Iteration stopping threshold	0.1

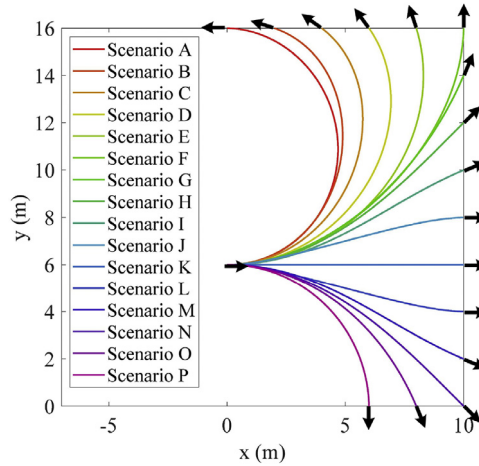


Fig. 2. Optimal trajectories of the tested scenarios.

4. Model validation

The descriptive power, plausibility, accuracy, and the quality of the predicted trajectory of the proposed model will be validated in this section according to the following four steps: (1) validate the descriptive power of a solution to the model by enumerating common moving cases in the intersection; (2) validate the plausibility of the solution of model behavior by analyzing change tendency of the path, the two control variables (κ and α), and the running costs under different weights of the running costs; (3) validate the accuracy of the solution algorithm by comparing the difference between the results of the proposed algorithm and the analytical solution; (4) calibrate the model parameters and validate the quality of the predicted trajectory using empirical data.

4.1. Descriptive power validation

To validate the proposed solution algorithm can be used to solve all conditions, the common moving cases in the intersection are enumerated in Table 1, which contains U-turn, left turns with various angles, through movements with/without an offset, and right turns with various angles. The other input parameters are shown in Table 2. Note that we choose the normalize the cost C of Eq. (6) in units of time. The results are illustrated in Fig. 2, which is a manifestation that the proposed solution algorithm can generate optimal control results under all tested scenarios.

Table 3
Accuracy validation for the fastest path scenario.

Absolute error	Mean	Minimum	Maximum	Std. Deviation (RMSE)
Path (x, y) , m	4.02E-02	0.00E+00	7.97E-02	2.58E-02
Pace (p) , s/m	7.25E-17	0.00E+00	5.00E-16	1.15E-16

Note: the standard deviation of the absolute error equals the RMSE (root-mean-square error).

4.2. Plausibility of model behavior

For reasons of simplicity in explanation, the left-turn scenario (Scenario F in Table 1) will be used in the hereafter discussion. The path (x, y) , the heading angle (θ) , the pace (p) , the curvature control (κ) , and the acceleration control (α) are analyzed, as illustrated in Fig. 3. Two sub-scenarios are discussed in this section. Scenario 1 is a free terminal pace scenario, which is the same as Scenario F in Table 1. Scenario 2 is a restricted terminal pace scenario, in which the terminal pace is restricted to be equal to the initial one. The terminal state in Scenario 2 turns to be $[10, 16, \pi/2, 1/8]$. The other input parameters are shown in Table 2.

Generally, the path (see Fig. 3(b)), the running state (see Figs. 3(d) and 3(f)), and the curvature and acceleration controls (see Figs. 3(h) and 3(j)) are symmetric under the restricted terminal pace scenario. It indicates that the trajectories are the same when driving from one point to another and backward when the initial state and the terminal state are the same, which is in accordance with the expectation. However, the curvature and acceleration controls, the running state, and the path are nonsymmetric when the pace is changeable. It is because of all the three aspects of the running cost (L_1 , L_2 , and L_3) are related to the pace. The two control variables, κ and α , will adjust according to the pace state to obtain the minimum running costs.

For the running path, as we expected, it is always within the boundary of the fastest path and the smoothest path. The path becomes straighter and the turning becomes sharper with the increase of the weight of the travel time cost. Accordingly, the length of the running path decreases with the increase of the weight of the travel time cost. It is because when the weight of the travel time cost increases, the vehicle tends to select the fastest path (the black line); on the contrary, the vehicle tends to select the smoothest path (the red line) when the weight of the driving smooth cost increases.

For the change tendency of the heading angle, it changes more homogeneous with the increase of the relative weight of the unsmooth running cost. As the red line shown in Fig. 3(c) and (d), it is almost straight, which indicates the heading angle changes uniformly. It is in accordance with the definition of the “smoothest path”. On the contrary, the black line is the most unsmooth path. It is composed of two segments with the largest slope and one segment with a slope of 0. The two segments with the largest slope indicate the vehicle runs with the largest curvature, while the segment with a slope of 0 indicates the vehicle runs straight ahead. It can be further verified by Fig. 3(g) and (h), where we can see the change of the curvature control along the path. The red line (smoothest path) is the most stable one. The black line (the fastest path) has the largest changes (maximum curvature or 0), which is in accordance with the analytical results of the fastest path shown in Section 3.1.

For the change tendency of the pace (p) , As expected, the changes of p under the fastest path is the most dramatic. The p of the fastest path (black line) decreases (acceleration in velocity) with a sharp slope then maintains at the minimum value (the maximum velocity limitation). It is in accordance with the change of the α in Fig. 3(i) and (j), where only the minimum value or the 0 of the α is selected. It is in accordance with the analytical results of the fastest path shown in Section 3.1. Moreover, from Fig. 3(j), we can find the value of α always larger or equal to 0 for the smoothest path (red line), which is in accordance with the analytical results of the smoothest path shown in Section 3.2. For other paths except for the fastest and smoothest paths, the change of the running pace depends on the weights of the travel time cost and unsmooth running cost. When the travel time cost makes a primary contribution to the total cost, the vehicle prefers to accelerate (negative value in α , hence a reduction of pace and increase of speed) to minimize the total cost.

Fig. 4 shows the change in the travel time cost and the driving smoothness cost with the change of the weights. As expected, the travel time cost decreases and the driving smoothness cost increases with the increase of the weight of travel time cost.

In summary, the analysis shows that the proposed model is sensible. The vehicle dynamics are shown to have symmetry when the terminal pace is restricted to be equal to the initial one. Qualitatively, the optimal trajectory changes in the range of the shortest path and smoothest path under different weights of the running cost.

4.3. Accuracy validation

The result of the fastest path is further analyzed in this section by comparing the results drawn from the analytical solution in Section 3 to validate the accuracy of the proposed algorithm. According to the input parameters shown in Table 1, the expressions of the real fastest path of the left turn (Scenario F in Table 1) are shown in Eq. (37). We can check the gap (the Euclidean distance for the path and the absolute error of the pace) between the calculated results based on the

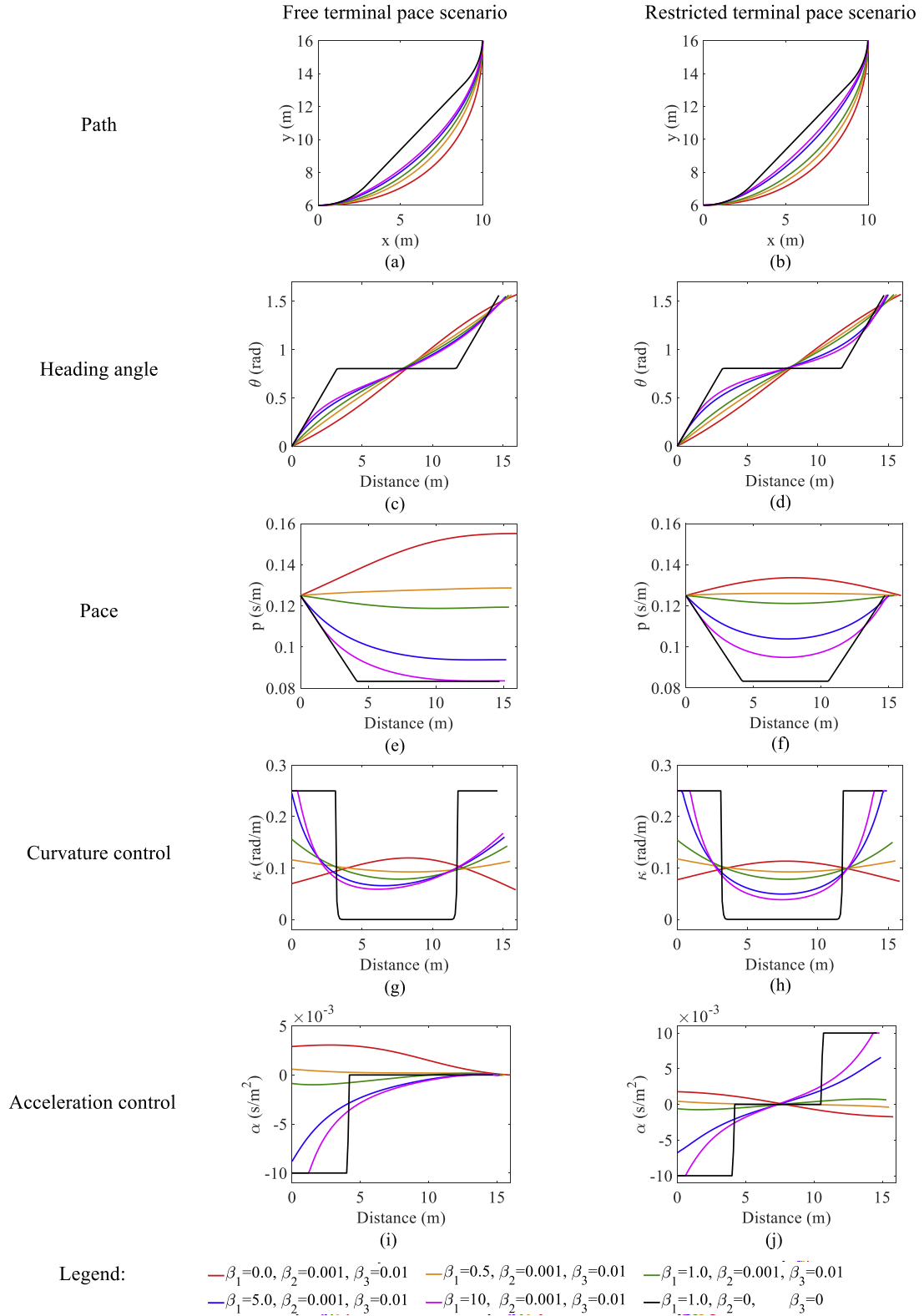


Fig. 3. Acceleration control analysis.

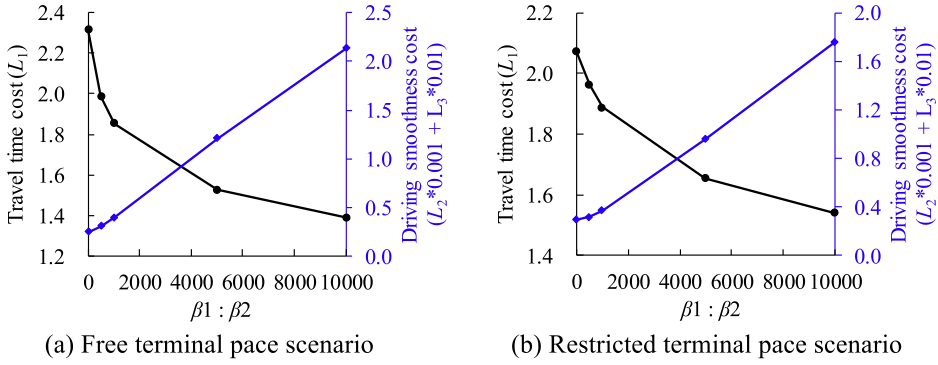


Fig. 4. Running cost analysis.

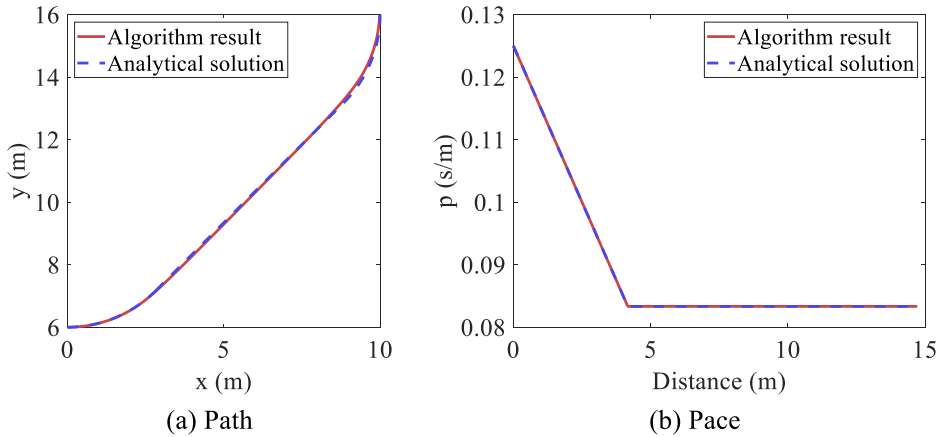


Fig. 5. Comparison between the algorithm result and analytical solution .

proposed algorithm and the real ones obtained from the analytical solution at each calculated step. The comparison results are shown in Fig. 5 and Table 3.

The results show that the differences are small. In this test case, the average error, maximum error, and RMSE (root-mean-square error) in path (position state) of the real fastest path are 0.04 m, 0.08 m, and 0.03 m, which very small compared to of the width of the traffic lane. Additionally, there is no observable difference in the pace. Therefore, the accuracy of the proposed algorithm is acceptable.

$$\begin{cases} y = 10 - \sqrt{16 - x^2}, & 0 \leq x \leq 2\sqrt{2} \\ y = x + 10 - 4\sqrt{2}, & 2\sqrt{2} < x < 6 + 2\sqrt{2} \\ y = 16 - \sqrt{16 - (x - 6)^2}, & 6 + 2\sqrt{2} \leq x \leq 10 \end{cases} \quad (37)$$

4.4. Validation with empirical data

In this section, the proposed model is validated using empirical data. The model parameters are firstly calibrated using the real vehicular trajectories collected in an intersection. Then, the calibrated model is validated using the data collected in another intersection.

Two intersections located in Shanghai, China, namely Youyi Road – Tieli Road and Zuchongzhi Road – Gaosi Road, are selected for parameter calibration and model validation, respectively, as shown in Fig. 6. The operation of the intersection is recorded by the unmanned aerial vehicle. The position of each vehicle at each frame (1/24 s) can be collected by using a specially developed video recognition software. Then, the real vehicular trajectory can be obtained.

The RMSE (root-mean-square error) of the trajectory at all time steps will be used as the indicator of the accuracy of the model. The trajectory error at each time step (1/24 s) is defined as the Euclidean distance between the generated trajectory and the real trajectory, as shown in Fig. 7(a).

For parameter calibration, the three relative weights of the running cost, β_1 , β_2 , and β_3 , need to be calibrated in the model. Since they are relative weights, without loss of generality, β_1 is set to be 1. Then, there are only two parameters to calibrate, $\beta = \{\beta_2, \beta_3\}$. For each collected vehicle, the β was calibrated using the enumeration method according to the following five steps. (1) Extract the initial and terminal states of the vehicle. (2) Enumerate all the β from 0 s⁵/m³ to 0.5

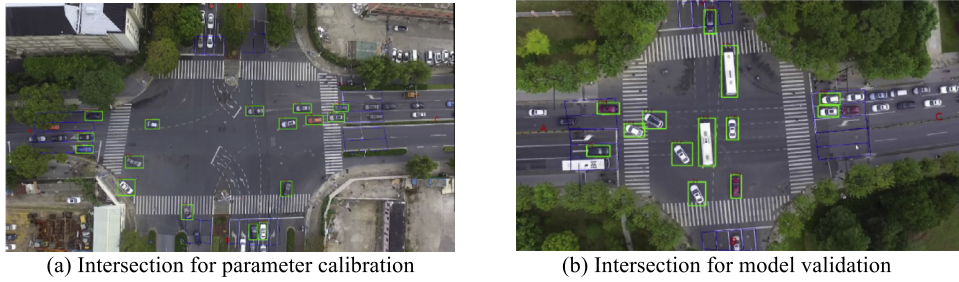


Fig. 6. Surveyed intersections.

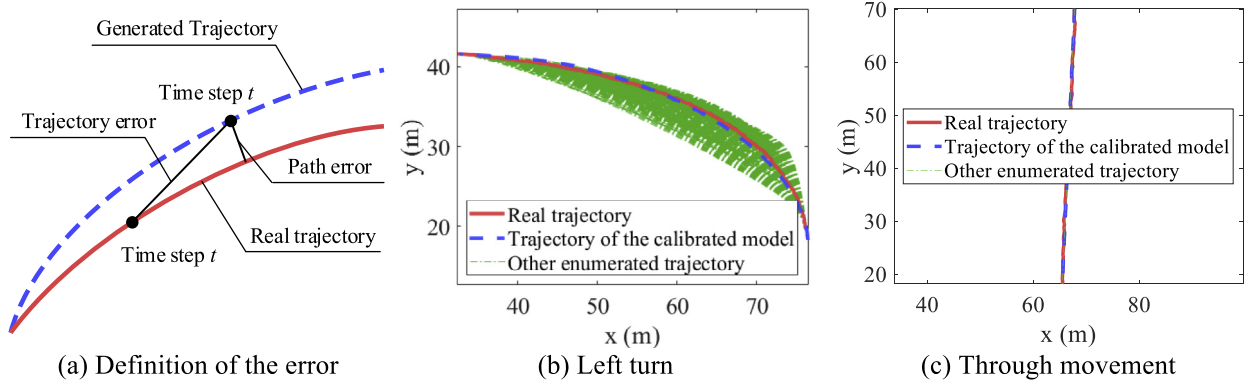


Fig. 7. Example of parameter calibration.

Table 4
Results of parameter calibration.

Left-turn					Through movement				
Vehicle number	β_2 (s^5/m^3)	β_3 (s^5/m^3)	RMSE of trajectory (m)	RMSE of path (m)	Vehicle number	β_2 (s^5/m^3)	β_3 (s^5/m^3)	RMSE of trajectory (m)	RMSE of path (m)
1	0.068	0.087	1.7493	0.6427	21	0.021	0.129	0.4935	0.1723
2	0.070	0.105	1.7105	0.5612	22	0.027	0.032	0.6161	0.2799
3	0.020	0.070	0.9695	0.2324	23	0.009	0.013	0.3399	0.3137
4	0.026	0.031	1.7490	0.9033	24	0.015	0.052	0.4714	0.2311
5	0.047	0.049	1.8327	1.1397	25	0.019	0.075	0.5174	0.3966
6	0.023	0.071	1.0432	0.3604	26	0.006	0.026	0.3711	0.1352
7	0.017	0.031	1.7029	1.1981	27	0.045	0.045	0.4391	0.2668
8	0.054	0.052	1.7067	1.5648	28	0.008	0.019	0.4496	0.1429
9	0.015	0.013	1.1516	1.8955	29	0.033	0.064	0.5479	0.1732
10	0.037	0.064	1.5589	0.2223	30	0.005	0.005	0.7082	0.2101
11	0.026	0.048	0.6749	0.4099	31	0.020	0.050	0.4628	0.3704
12	0.045	0.049	1.9261	1.0918	32	0.003	0.059	0.4044	0.1551
13	0.008	0.076	1.5516	0.1759	33	0.032	0.025	0.2672	0.2393
14	0.027	0.016	1.0216	0.1946	34	0.024	0.024	0.3435	0.2490
15	0.010	0.045	0.6944	0.3596	35	0.005	0.009	0.5221	0.1914
16	0.033	0.039	1.9809	0.9256	36	0.012	0.028	0.3226	0.2578
17	0.049	0.079	1.1081	0.8237	37	0.049	0.014	0.6836	0.2558
18	0.030	0.028	0.5428	0.1572	38	0.005	0.040	0.3536	0.2542
19	0.040	0.034	1.4750	0.8956	39	0.007	0.032	0.5488	0.2242
20	0.015	0.002	1.4607	0.8992	40	0.004	0.081	0.4422	0.2760

s^5/m^3 with an interval of $0.001 s^5/m^3$. (3) Generate the trajectory under each β using the proposed model. (4) Calculate the corresponding fitness value (RMSE). (5) Obtain the optimal value of β according to the fitness (smallest RMSE). Fig. 7(b) and (c) illustrate an example of the parameter calibration for left-turn and through vehicles, respectively. The results of the parameter calibration of 40 vehicles are shown in Table 4. One can find that the values of RMSE are smaller than 2.0 m for all the tested vehicles. The average RMSE of trajectory is 0.923 m. It means the distance between the generated trajectory and the real trajectory at each time is approximately one meter. If only considering the path and neglecting the time and speed, the average RMSE of path is 0.486 m. Given the initial and terminal states, the real trajectories can be well represented by

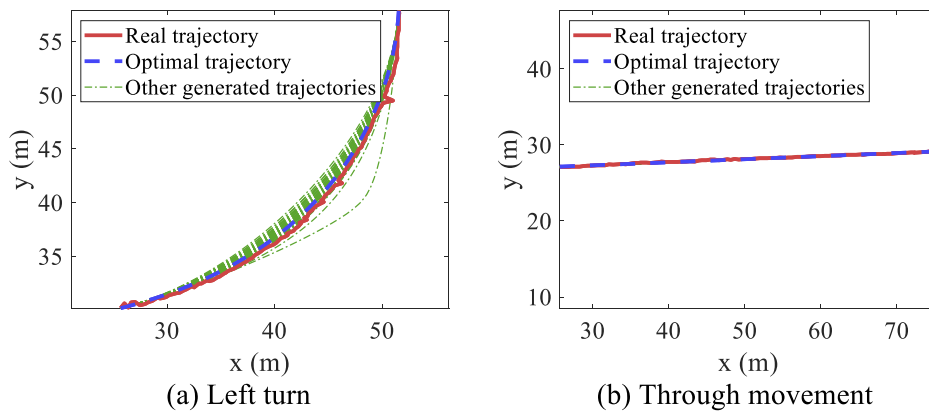


Fig. 8. Example of model validation.

Table 5
Results of model validation.

Left-turn					Through movement				
Vehicle number	β_2 (s^5/m^3)	β_3 (s^5/m^3)	RMSE of trajectory (m)	RMSE of path (m)	Vehicle number	β_2 (s^5/m^3)	β_3 (s^5/m^3)	RMSE of trajectory (m)	RMSE of path (m)
1	0.023	0.071	1.4358	1.2253	11	0.030	0.028	0.6049	0.2325
2	0.004	0.081	1.9354	1.4839	12	0.015	0.002	2.2613	0.3610
3	0.070	0.105	1.9610	1.8657	13	0.021	0.129	0.4356	0.3046
4	0.070	0.105	2.8646	1.2076	14	0.021	0.129	0.2634	0.1420
5	0.070	0.105	1.8124	1.4233	15	0.005	0.005	1.0374	0.2946
6	0.033	0.064	1.8546	1.3855	16	0.005	0.005	1.1096	0.2419
7	0.027	0.016	0.7366	0.1885	17	0.070	0.105	0.2683	0.2556
8	0.068	0.087	1.0164	0.6140	18	0.005	0.005	0.4490	0.2882
9	0.068	0.087	1.3310	1.0924	19	0.032	0.025	0.2410	0.2093
10	0.070	0.105	2.2098	0.8055	20	0.015	0.002	0.9099	0.3394

adjusting the weights of the costs. It indicates that the proposed model has a strong performance in describing the moving trajectory of the manual driving vehicle.

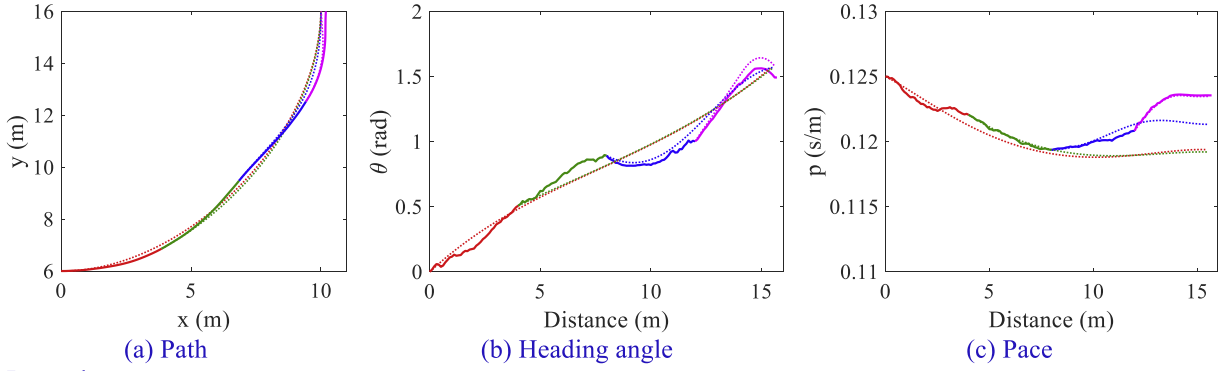
For model validation, it was conducted by comparing the real vehicular trajectories and the predicted trajectories with the calibrated β . For each vehicle, the accuracy of the model was tested according to the following four steps. (1) Extract the initial and terminal states of the vehicle. (2) Generate the trajectory under each calibrated β in Table 4 using the proposed model. (3) Calculate the corresponding fitness value (RMSE). (4) Obtain the accuracy of the model and the optimal value of β according to the fitness (smallest RMSE). Fig. 8(a) and (b) illustrate an example of the model validation for left-turn and through vehicles, respectively. The results of the model validation of 20 vehicles are shown in Table 5. The average RMSE of trajectory is 1.237 m. Although it is a little larger than the parameter calibration cases, the accuracy is still acceptable. Please note this is the result of the trajectory using other driver's preferences. In application, numerous real vehicular trajectories can be collected to draw the distribution of the calibrated parameters (β). Then, we can represent the distribution of the trajectories by running the model many times using different values of β drawn from the distribution.

5. Model extensions

In this paper, we establish a utility-based two-dimensional model to describe the trajectory of the manual driving vehicle at intersections. The model is a simplified representation of real-world driving, of which realism can be extended with elements such as the uncertainty of the manual driving, the preference of the driving path, and the avoidance of stationary and moving obstacles. This section discusses these possibilities further. In particular, the framework of control actions (splitting longitudinal and lateral controls) and solution approach (applying a Pontryagin principle for optimization) is the same, but additional costs are included for these considerations.

5.1. Uncertainty of manual driving

For a human driver, even if we assume that the driver has perfect knowledge on the system dynamics, it is still difficult or even impossible to control a vehicle exactly the way he wants. In the hierarchical framework of strategic, tactical, and operational driving, as defined by Hoogendoorn and Bovy (1999), the vehicle operation is not necessarily accurate. The actual



Legend:

- Manual driving at period 1 — Manual driving at period 3 - - - - - Optimal control at period 1 - - - - - Optimal control at period 3
- Manual driving at period 2 — Manual driving at period 4 - - - - - Optimal control at period 2 - - - - - Optimal control at period 4

Fig. 9. Trajectories under each control period.

control $\tilde{\mathbf{U}}^*$ of manual driving contains the uncertainty. But a driver will realize this inaccuracy in control and re-plan his/her desired trajectory (in the tactical layer). To reflect this behavioral characteristic, we can add noise to the moving dynamics to reflect the uncertainty of the manual driving, as shown in Eq. (38). Additionally, the idea of re-planning the optimal trajectory at each discretized control period can be applied. It means a driver will plan the entire control strategy from the current state to the terminal state, but only the first period of the control decision will be applied, i.e. model predictive control (Wang, 2018; Wang et al., 2014a, Wang et al., 2014b). After that, the driver will re-plan the control strategy from the updated state to the terminal state. The discretized control period can be pre-determined with the unit of distance or time. In this way, the uncertainty of manual driving can be reproduced. The actual running trajectories change for different drivers, even their weights to the moving costs are the same. We model it as:

$$\dot{\mathbf{X}} = f(s, \mathbf{X}, \tilde{\mathbf{U}}^*) = \begin{cases} \dot{x} = \cos \theta \\ \dot{y} = \sin \theta \\ \dot{\theta} = (1 + \xi_1)\kappa^* \\ \dot{p} = (1 + \xi_2)\alpha^* \end{cases} \quad (38)$$

where, κ^* and α^* are the optimal control of κ and α ; ξ_1 and ξ_2 represent the uncertainty of the human driver control and the resulting effects on the subject's kinematics.

Using the same case study as in Section 4.2 (Scenario F in Table 1), the random variables ξ_1 and ξ_2 obey the normal distribution with the expectation of $\mu_1 = \mu_2 = 0$, and the standard deviation of $\sigma_1 = \sigma_2 = 1$. The discretized control period is set to be 4 m. The weights of the running cost β_1 , β_2 , and β_3 are set to be 1, 0.001 s⁵/m³, and 0.01 s⁵/m³, respectively. Other parameters remain the same as those in Table 2.

Fig. 9 illustrates the optimal control and the manual driving of each control period. One can find that the trajectories of the manual driving are not the same as the optimal control. There are some errors. However, at the beginning of each control period, the optimal control path will be re-planned. Then, the human driver adjusts the control according to the re-planned route and reaches the terminal. Please note the uncertainty of manual driving changes for different drivers. Therefore, the actual running trajectories change for different drivers, even the distribution of the random variables ξ_1 and ξ_2 are the same. As an example, Fig. 10 illustrates 5 manual driving trajectories with the same distribution of ξ_1 and ξ_2 .

5.2. Preference of the driving trajectory

Human drivers also may prefer to drive in some space instead of others according to the layout of the intersection, which can be called the preference of the driving trajectory. The preference might be following the guide lines, or travelling closer to the side of the road. An additional running cost term reflecting this phenomenon can be added in this framework, which is related to the position (coordinates) of the vehicle, as shown in Eq. (39).

$$L_4 = O(x, y) \quad (39)$$

where, $O(x, y)$ is the cost function related to the coordinates.

The explicit formulation of Eq. (39) is related to the layout of the intersection and the specific geometric design element. As an example, we show a case with a turning movement, like introduced in Section 4.2. In this case, we consider two sets of line-markings that are used to guide vehicles. One makes a smooth turn, and the other a sharp turn (Fig. 11). The equations are as follows.

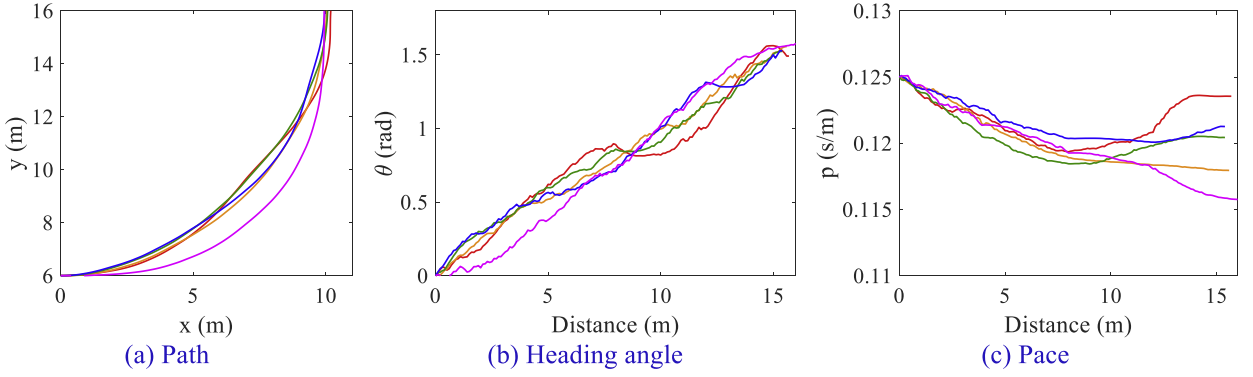


Fig. 10. Trajectories with the consideration of manual driving uncertainty.

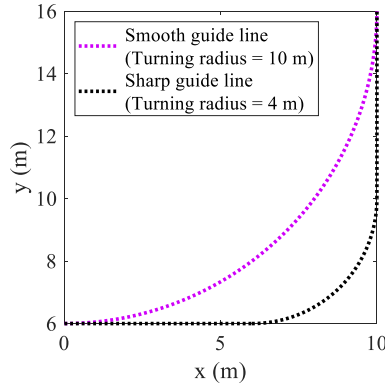


Fig. 11. Two scenarios of guide lines.

Assuming the curve of the guide line is given, the cost function can be defined as the quadratic function of the distance between the vehicular position (x, y) and the guide line curve $g(x', y')$, as shown in Eq. (40).

$$L_4 = \frac{1}{2} \left((x - x'_0)^2 + (y - y'_0)^2 \right) \quad (40)$$

where, (x'_0, y'_0) is the nearest point on the guide line curve to the vehicular position (x, y) , which can be obtained according to Eqs. (41)-(42).

$$g(x', y') = 0 \quad (41)$$

$$\frac{\partial g}{\partial y'}(x - x'_0) - \frac{\partial g}{\partial x'}(y - y'_0) = 0 \quad (42)$$

As shown in Fig. 11, the two guide line curves can be expressed by Eqs. (43) and (44) for the smooth guide line and the sharp guide line, respectively.

$$y'_1 = 16 - \sqrt{100 - x_1'^2}, \quad 0 \leq x \leq 10 \quad \text{for the smooth line} \quad (43)$$

$$\begin{cases} y'_2 = 6, & 0 \leq x'_2 \leq 6 \\ y'_2 = 10 - \sqrt{16 - (x'_2 - 6)^2}, & 6 < x'_2 < 10 \\ x'_2 = 10, & 10 \leq y'_2 \leq 16 \end{cases} \quad \text{for the sharp line} \quad (44)$$

For the smooth guide line scenario, the running cost of driving preference equal to Eqs. (45). Then, the Hamiltonian function can be specified as Eq. (46), and the co-state dynamics turns to be Eq. (47).

$$L_4 = \frac{1}{2} \left(\sqrt{x^2 + (y - 16)^2} - 10 \right)^2 \quad (45)$$

$$\mathcal{H} = \beta_1 p + \frac{1}{2} \beta_2 \kappa^2 p^{-4} + \frac{1}{2} \beta_3 \alpha^2 p^{-6} + \frac{1}{2} \beta_4 \left(\sqrt{x^2 + (y - 16)^2} - 10 \right)^2 + \lambda_1 \cos \theta + \lambda_2 \sin \theta + \lambda_3 \kappa + \lambda_4 \alpha \quad (46)$$

$$\frac{d\lambda}{ds} = \begin{cases} \frac{d\lambda_1}{ds} = -\frac{\partial \mathcal{H}}{\partial x_1} = \beta_4 x \left(10(x^2 + (y - 16)^2)^{-\frac{1}{2}} - 1 \right) \\ \frac{d\lambda_2}{ds} = -\frac{\partial \mathcal{H}}{\partial x_2} = \beta_4 (y - 16) \left(10(x^2 + (y - 16)^2)^{-\frac{1}{2}} - 1 \right) \\ \frac{d\lambda_3}{ds} = -\frac{\partial \mathcal{H}}{\partial x_3} = \lambda_1 \sin \theta - \lambda_2 \cos \theta \\ \frac{d\lambda_4}{ds} = -\frac{\partial \mathcal{H}}{\partial x_4} = -\beta_1 + 2\beta_2 \kappa^2 p^{-5} + 3\beta_3 \alpha^2 p^{-7} \end{cases} \quad (47)$$

For the sharp guide line scenario, the running cost of driving preference equal to Eqs. (48). Then, the Hamiltonian function can be specified as Eq. (49), and the co-state dynamics turns to be Eq. (50).

$$L_4 = \begin{cases} \frac{1}{2} (y - 6)^2, & x \leq 6, x + y \leq 16 \\ \frac{1}{2} \left(\sqrt{(x - 6)^2 + (y - 10)^2} - 4 \right)^2, & x > 6, y < 10 \\ \frac{1}{2} (x - 10)^2, & y \geq 10, x + y > 16 \end{cases} \quad (48)$$

$$\mathcal{H} = \begin{cases} \sum_{j=1}^3 \beta_j L_j + \beta_4 \frac{1}{2} (y - 6)^2 + \lambda' f(s, \mathbf{X}, \mathbf{U}), & x \leq 6, x + y \leq 16 \\ \sum_{j=1}^3 \beta_j L_j + \beta_4 \frac{1}{2} \left(\sqrt{(x - 6)^2 + (y - 10)^2} - 4 \right)^2 + \lambda' f(s, \mathbf{X}, \mathbf{U}), & x > 6, y < 10 \\ \sum_{j=1}^3 \beta_j L_j + \beta_4 \frac{1}{2} (x - 10)^2 + \lambda' f(s, \mathbf{X}, \mathbf{U}), & y \geq 10, x + y > 16 \end{cases} \quad (49)$$

$$\frac{d\lambda}{ds} = \begin{cases} \frac{d\lambda_1}{ds} = -\frac{\partial \mathcal{H}}{\partial x_1} = \begin{cases} 0, & x \leq 6, x + y \leq 16 \\ \beta_4 (x - 6) \left(4 \left((x - 6)^2 + (y - 10)^2 \right)^{-\frac{1}{2}} - 1 \right), & x > 6, y < 10 \\ \beta_4 (10 - x), & y \geq 10, x + y > 16 \\ \beta_4 (6 - y), & x \leq 6, x + y \leq 16 \end{cases} \\ \frac{d\lambda_2}{ds} = -\frac{\partial \mathcal{H}}{\partial x_2} = \begin{cases} \beta_4 (y - 10) \left(4 \left((x - 6)^2 + (y - 10)^2 \right)^{-\frac{1}{2}} - 1 \right), & x > 6, y < 10 \\ 0, & y \geq 10, x + y > 16 \end{cases} \\ \frac{d\lambda_3}{ds} = -\frac{\partial \mathcal{H}}{\partial x_3} = \lambda_1 \sin \theta - \lambda_2 \cos \theta \\ \frac{d\lambda_4}{ds} = -\frac{\partial \mathcal{H}}{\partial x_4} = -\beta_1 + 2\beta_2 \kappa^2 p^{-5} + 3\beta_3 \alpha^2 p^{-7} \end{cases} \quad (50)$$

We can derive the necessary condition (19) for the optimal control for both guide line scenarios. The results of the optimal control for the smooth and sharp guide line scenarios under various weights of the driving preference cost are shown in Fig. 12 and Fig. 13, respectively. The weights of the running cost β_1 , β_2 , and β_3 are set to be 10, 0.001 s⁵/m³, and 0.01 s⁵/m³, respectively. The weights of the running cost β_4 changes from 0 s/m³ to 5 s/m³. Other parameters remain the same as those in Table 2.

One can find that in both guide line scenarios, with the increase of the weight of the driving preference cost (β_4), the running trajectory becomes closer and closer to the designed guide line, while the value of the velocity almost remains the same. Comparing the two scenarios of the guide line, the sharp guide line is more difficult to approach. Drivers will not follow the sharp guide line unless a huge weight is given for the running cost of driving preference, which can be a traffic rule in reality. Moreover, we noticed that the running cost Eq. (48) is a piecewise continuous function. It leads to a piecewise continuous the Hamiltonian function (49). The results show that the proposed iterative numerical solution algorithm can handle this condition.

5.3. Interference with stationary and moving obstacles

In the real world, drivers should avoid objects during driving. This can also be captured by adding a new running cost term. The generalized obstacles can be the separation facilities, the piers of the elevated highways and pedestrian over-

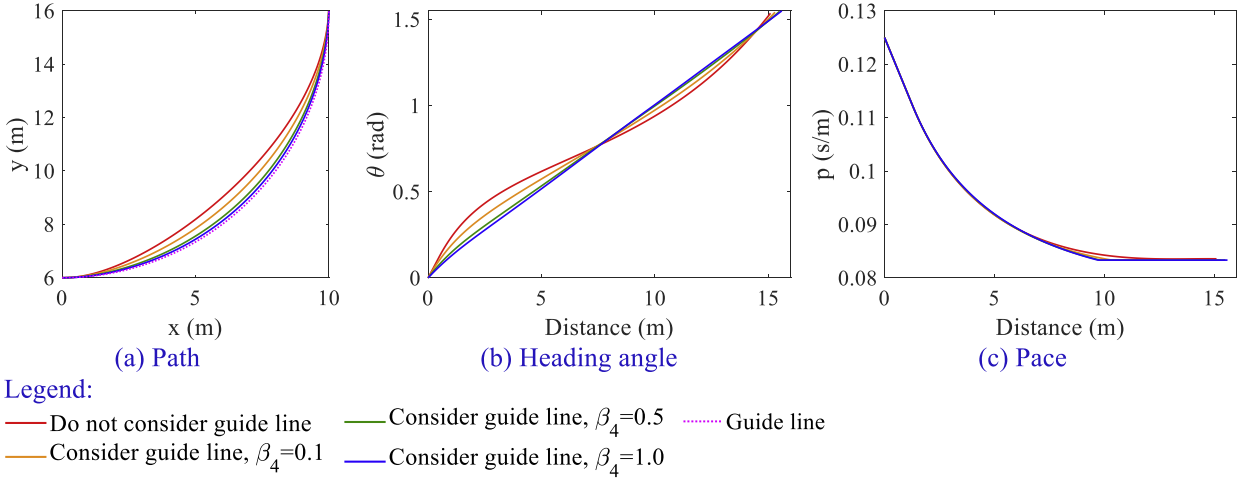


Fig. 12. Trajectory under smooth guide line scenario.

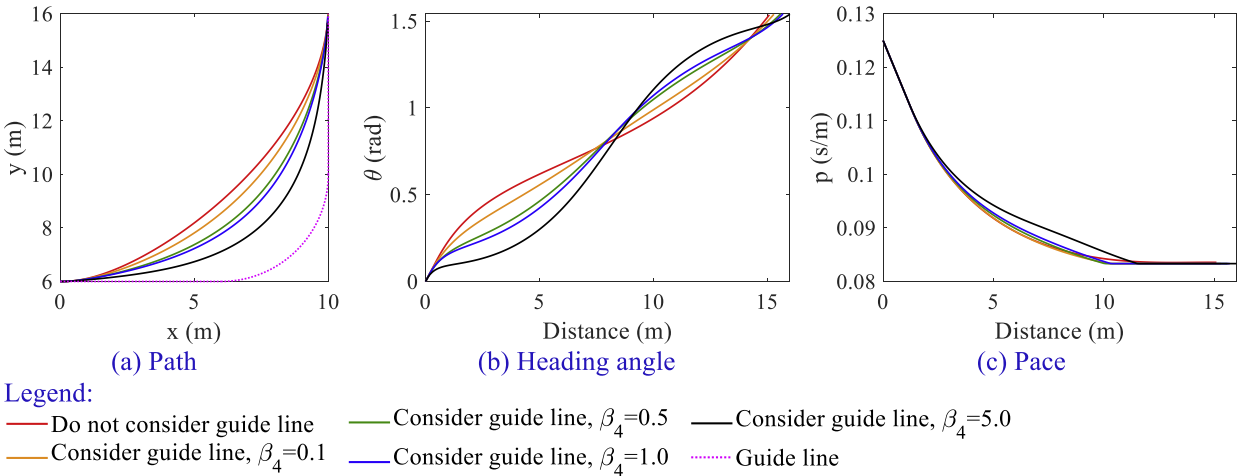


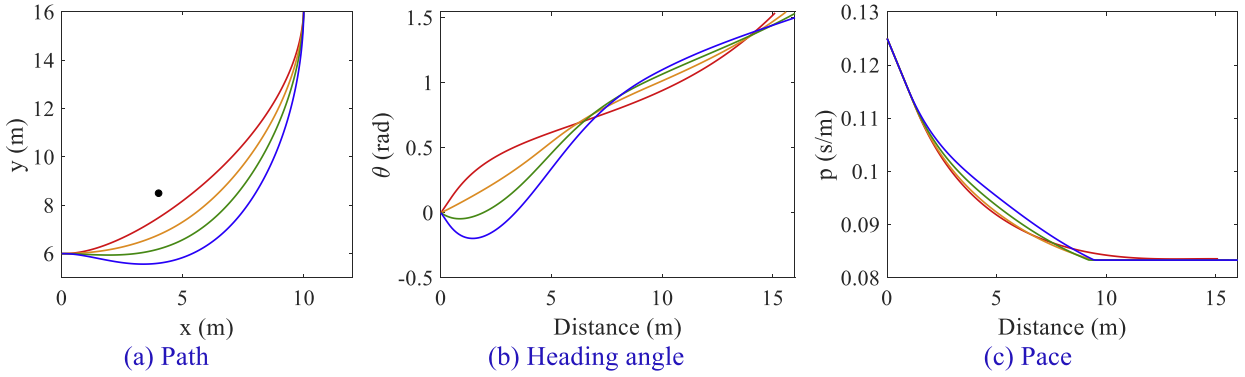
Fig. 13. Trajectory under sharp guide line scenario.

passes, and other vehicles. They can be treated as stationary or moving obstacles. Since the drivers aim to stay clear of the obstacles, the running cost caused by the obstacles can be defined as a monotonically decreasing function of the distance between a vehicle and the obstacle, as shown in Eq. (51). Then, the Hamiltonian function can be specified as Eq. (52), and the co-state dynamics turns to be Eq. (53). The difference between the stationary and moving obstacles lies in that the position of the moving obstacle (x_b, y_b) will change along the time while the stationary obstacle position will not. Please note, since the state X of a vehicle is described by using the moving distance s as the dependent variable in the proposed model, the moving distance s should be transformed to the time t when updating the position of the moving obstacles, as shown in Eq. (54). In a quite short distance, Eq. (54) turns to Eq. (55) by using the Euler forward difference.

$$L_5 = e^{-\frac{(x-x_b)^2+(y-y_b)^2}{2D_b^2}} \tag{51}$$

where, x_b and y_b are the coordinate of the obstacle b , m; D_b is the scale parameter that is reflecting the influence range of the obstacle b , m.

$$\mathcal{H} = \beta_1 p + \frac{1}{2} \beta_2 \kappa^2 p^{-4} + \frac{1}{2} \beta_3 \alpha^2 p^{-6} + \beta_5 e^{-\frac{(x-x_b)^2+(y-y_b)^2}{2D_b^2}} + \lambda_1 \cos \theta + \lambda_2 \sin \theta + \lambda_3 \kappa + \lambda_4 \alpha \tag{52}$$



Legend:

- Do not consider the obstacle — Consider the obstacle, $D_b=0.75$ • Fixed obstacle
- Consider the obstacle, $D_b=0.50$ — Consider the obstacle, $D_b=1.00$

Fig. 14. Trajectory under stationary obstacle scenario.

$$\frac{d\lambda}{ds} = \begin{cases} \frac{d\lambda_1}{ds} = -\frac{\partial \mathcal{H}}{\partial x_1} = \beta_5 \frac{x - x_b}{D_b^2} e^{-\frac{(x-x_b)^2 + (y-y_b)^2}{2D_b^2}} \\ \frac{d\lambda_2}{ds} = -\frac{\partial \mathcal{H}}{\partial x_2} = \beta_5 \frac{y - y_b}{D_b^2} e^{-\frac{(x-x_b)^2 + (y-y_b)^2}{2D_b^2}} \\ \frac{d\lambda_3}{ds} = -\frac{\partial \mathcal{H}}{\partial x_3} = \lambda_1 \sin \theta - \lambda_2 \cos \theta \\ \frac{d\lambda_4}{ds} = -\frac{\partial \mathcal{H}}{\partial x_4} = -\beta_1 + 2\beta_2 \kappa^2 p^{-5} + 3\beta_3 \alpha^2 p^{-7} \end{cases} \quad (53)$$

The difference between the stationary and moving obstacles lies in that the position of the moving obstacle (x_b, y_b) will change along the time while the stationary obstacle position will not. Please note, since the state X of a vehicle is described by using the moving distance s as the dependent variable in the proposed model, the time t should be obtained from distance s when updating the position of the moving obstacles, as shown in Eq. (54). In a quite short distance, Eq. (54) turns to Eq. (55) by using the Euler forward difference.

$$t = \int_{s_1}^{s_2} p ds \quad (54)$$

$$\Delta t = p \cdot \Delta s + \frac{1}{2} \alpha \cdot \Delta s^2 \quad (55)$$

Using the same case study as in Section 4.2, two scenarios of obstacles are considered: one is a stationary obstacle located at the coordinate (4.0, 8.5); the other is a moving obstacle driving straight forward from the position (12, 10) to the west with a constant velocity of 4 m/s. The weights of the running cost $\beta_1, \beta_2, \beta_3$, and β_5 are set to be 10, $10^{-3} \text{ s}^5/\text{m}^3$, $10^{-2} \text{ s}^5/\text{m}^3$, and 10 s/m, respectively. The parameter that reflecting the influence range of the obstacle (D_b) is set to be 0.75 m. Other parameters remain the same as those in Table 2. The results of the optimal control for stationary and moving obstacle scenarios under various weights of the obstacle cost are shown in Fig. 14 and Fig. 15, respectively.

For stationary obstacles, vehicles should adapt their path in space to go around the obstacle and have a longer path, as shown in Fig. 14. With the increase of the parameter D_b from 0 m (without the consideration of the obstacle) to 0.5 m, 0.75 m, and 1 m, which reflects the influence range of the obstacle, the minimum distance between the running trajectory and the stationary obstacle changes from 0.84 m to 1.53 m, 2.17 m, and 2.84 m, respectively. In reality, the value of the parameter D_b should be adjusted according to the width of the vehicle and the size of the obstacle.

For moving obstacles, the framework allows two ways to avoid the moving obstacle: one is slowing down to yield the moving obstacle, the other is speeding up to pass the conflict point before the moving obstacle arriving. The choice of the optimal control strategy depends on the weights of different aspects of the running costs (β), as shown in Fig. 15. The color of the trajectory indicates the running time. There is a conflict between the controlled vehicle and the moving obstacle if the running cost of the obstacles is not considered (Trajectory 1: $\beta_1 = 10, \beta_2 = 10^{-3} \text{ s}^5/\text{m}^3, \beta_3 = 10^{-2} \text{ s}^5/\text{m}^3$, and $\beta_5 = 0 \text{ s/m}$). The conflict can be successfully avoided after considering the obstacles in the running cost. With the decrease of the weights of the smooth-running costs, the trajectory changes from a longer detour path with lower travel speed (Trajectory 2: $\beta_1 = 10, \beta_2 = 10^{-3} \text{ s}^5/\text{m}^3, \beta_3 = 10^{-2} \text{ s}^5/\text{m}^3$, and $\beta_5 = 10 \text{ s/m}$) to a shorter path with sharp turning and higher travel speed

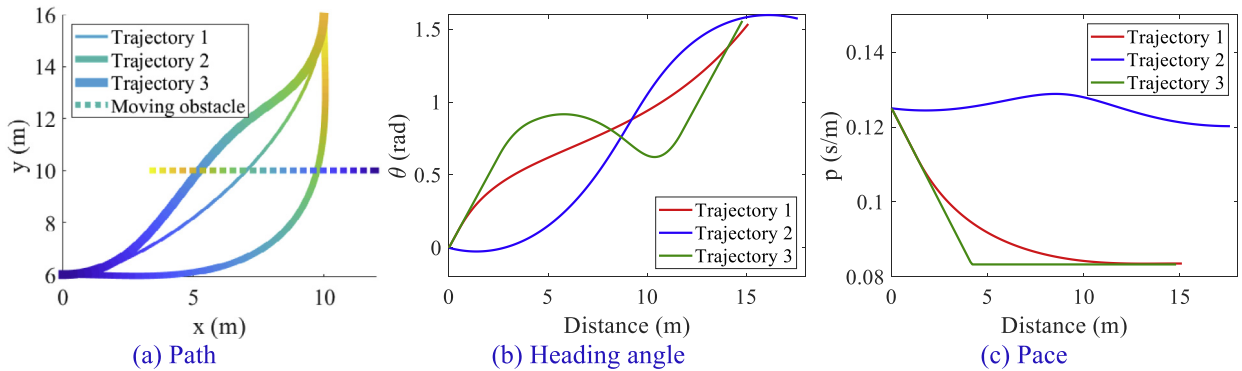


Fig. 15. Trajectory under moving obstacle scenario.

(Trajectory 3: $\beta_1 = 10$, $\beta_2 = 10^{-4} \text{ s}^5/\text{m}^3$, $\beta_3 = 10^{-3} \text{ s}^5/\text{m}^3$, and $\beta_5 = 10 \text{ s/m}$). Reducing the weights of the smooth-running costs results in aggressive behavior.

6. Conclusions

This study proposed a novel vehicular movement model at intersections, based on the assumption that the drivers are utility maximizers. The drivers schedule their activities, including the steering and acceleration, to minimize the predicted costs. The problem is described by an optimal control framework. The terminal costs of the deviations from the desired final state are considered, and the running costs of the travel time and driving smoothness are considered, which reflects a trade-off between the utilities of time and comfort. The intra-driver variation mechanism can be reflected by the weights of the costs. The proposed model is solved by an iterative numerical solution algorithm based on the Minimum Principle of Pontryagin. The descriptive power, plausibility, and accuracy of the proposed model are validated by comparing the calculated optimal control results with the common senses and the analytical solution under several cases. To operationalize the proposed model, it is extended by adding more considerations of the prevailing traffic conditions, including the uncertainty of the manual driving, the preference of the driving trajectory, and the avoidance of stationary and moving obstacles.

The main contribution of the study is the description of vehicle dynamics at intersections where the drivers can choose the optimal control among an infinite number of alternative running paths and speeds. The two control variables used in the model, κ and α , are chosen to represent how the drivers schedule their driving behavior, including turning the steering wheel and pushing the brake or throttle pedals. Choosing the distance along the trajectory – rather than time – as an independent variable moreover allows to decouple speed and path, which is useful for trajectory optimization. Qualitatively, the optimal trajectory changes in the range of the shortest path and smoothest path under different weights of the running cost. Moreover, the vehicle dynamics are manifested to have symmetry when the terminal pace is restricted to be equal to the initial one. We showed that the proposed model generates reasonable trajectories. The model is calibrated and validated against real-world trajectory data.

Please note that simplified vehicle constraints on its motion are considered in our work. One may argue that the simple constraints for acceleration are not realistic. It can be improved in future work by incorporating powertrain limits and road adhesion coefficient, which are mainly relevant for automated driving. Moreover, the calibration and validation for the proposed vehicular movement model (for one vehicle) are conducted in this study. However, the interaction effects are shown in numerical experiments. In future research, the distributions of the parameters under various conditions should be calibrated in detail by using numerous empirical trajectory data. We anticipate that a realistic model to describe the vehicle dynamics at intersections can be developed on the basis of the proposed model, which can be used to assess and optimize intersection design schemes and signal control strategies.

Declaration of Competing Interests

None.

CRedit authorship contribution statement

Jing Zhao: Conceptualization, Methodology, Software, Investigation, Writing - original draft, Visualization. **Victor L. Knoop:** Supervision, Methodology, Validation, Writing - review & editing, Visualization. **Meng Wang:** Supervision, Methodology, Validation, Writing - review & editing, Software.

Acknowledgments

The research is supported by the National Natural Science Foundation of China under Grant No. 71971140.

Supplementary materials

Supplementary material associated with this article can be found, in the online version, at doi:10.1016/j.trb.2020.04.001.

References

- Ahmane, M., Abbas-Turki, A., Perronnet, F., Wu, J., El Moudni, A., Buisson, J., Zeo, R., 2013. Modeling and controlling an isolated urban intersection based on cooperative vehicles. *Transp. Res. Part C: Emerg. Technol.* 28, 44–62.
- Ahn, S., Cassidy, M.J., Laval, J., 2004. Verification of a simplified car-following theory. *Transp. Res. Part B: Methodol.* 38, 431–440.
- Bichiou, Y., Rakha, H.A., 2018. Developing an optimal intersection control system for automated connected vehicles. *IEEE Trans. Intell. Transp. Syst.* 20, 1908–1916.
- Bichiou, Y., Rakha, H.A., 2019. Real-time optimal intersection control system for automated/cooperative vehicles. *Int. J. Transp. Sci. Technol.* 8, 1–12.
- Brackstone, M., McDonald, M., 1999. Car-following: a historical review. *Transp. Res. Part F: Traffic Psychol. Behav.* 2, 181–196.
- Chai, C., Wong, Y.D., 2014. Micro-simulation of vehicle conflicts involving right-turn vehicles at signalized intersections based on cellular automata. *Accid. Anal. Prev.* 63, 94–103.
- Chai, C., Wong, Y.D., 2015. Fuzzy cellular automata model for signalized intersections. *Comput.-Aided Civ. Infrastruct. Eng.* 30, 951–964.
- Dresner, K., Stone, P., 2004. Multiagent traffic management: a reservation-based intersection control mechanism. In: *Proceedings of the Third International Joint Conference on Autonomous Agents and Multiagent Systems-Volume 2*, pp. 530–537 IEEE Computer Society.
- Dresner, K., Stone, P., 2008. A multiagent approach to autonomous intersection management. *J. Artif. Intell. Res.* 31, 591–656.
- Fadhlon, K., Rakha, H., 2019. A novel vehicle dynamics and human behavior car-following model: model development and preliminary testing. *Int. J. Transp. Sci. Technol.*
- Fellendorf, M., Schönauer, R., Huang, W., 2012. Social force based vehicle model for two-dimensional spaces. *Transportation Research Board 91st Annual Meeting*. Transportation Research Board, Washington, DC.
- Feng, Y., Yu, C., Liu, H.X., 2018. Spatiotemporal intersection control in a connected and automated vehicle environment. *Transp. Res. Part C: Emerg. Technol.* 89, 364–383.
- Foulaadvand, M.E., Belbasi, S., 2007. Vehicular traffic flow at a non-signalized intersection. *J. Phys. A Math. Theor.* 40, 8289–8297.
- Gipps, P.G., 1981. A behavioral car-following model for computer-simulation. *Transp. Res. Part B: Methodol.* 15, 105–111.
- Guo, Y., Ma, J., Xiong, C., Li, X., Zhou, F., Hao, W., 2019. Joint optimization of vehicle trajectories and intersection controllers with connected automated vehicles: combined dynamic programming and shooting heuristic approach. *Transp. Res. Part C: Emerg. Technol.* 98, 54–72.
- Helbing, D., Buzna, L., Johansson, A., Werner, T., 2005. Self-organized pedestrian crowd dynamics: experiments, simulations, and design solutions. *Transp. Sci.* 39, 1–24.
- Hoogendoorn, R., van Arem, B., Hoogendoorn, S., 2014. Automated driving, traffic flow efficiency, and human factors: literature review. *Transp. Res. Rec.* 2422, 113–120.
- Hoogendoorn, S., Daamen, W., 2005. Self-organization in pedestrian flow. In: *Hoogendoorn, S.P., Luding, S., Bovy, P.H.L., Kchreckenber, M., Wolf, D.E. (Eds.), 5th International Conference on Traffic and Granular Flow*. Springer-Verlag, Berlin, Delft, Netherlands, pp. 373–382.
- Hoogendoorn, S., Hoogendoorn, R., Wang, M., Daamen, W., 2012. Modeling driver, driver support, and cooperative systems with dynamic optimal control. *Transp. Res. Rec.* 2316, 20–30.
- Hoogendoorn, S.P., Bovy, P.H., 1999. Gas-kinetic model for multilane heterogeneous traffic flow. *Transp. Res. Rec.* 1678, 150–159.
- Huang, L., Wu, J.P., You, F., Lv, Z.H., Song, H.B., 2017. Cyclist social force model at unsignalized intersections with heterogeneous traffic. *IEEE Trans. Ind. Inf.* 13, 782–792.
- Huynh, D.N., Boltze, M., Vu, A.T., 2013. Modelling mixed traffic flow at signalized intersection using social force model. *J. East. Asia Soc. Transp. Stud.* 10, 1734–1749.
- Jiang, H., Hu, J., An, S., Wang, M., Park, B.B., 2017. Eco approaching at an isolated signalized intersection under partially connected and automated vehicles environment. *Transp. Res. Part C: Emerg. Technol.* 79, 290–307.
- Jiang, R., Wu, Q., Zhu, Z., 2001. Full velocity difference model for a car-following theory. *Phys. Rev. E* 64.
- Kamalanathsharma, R.K., Rakha, H.A., Yang, H., 2015. Networkwide impacts of vehicle ecospeed control in the vicinity of traffic signalized intersections. *Transp. Res. Rec.* 2503, 91–99.
- Lee, J., Park, B., 2012. Development and evaluation of a cooperative vehicle intersection control algorithm under the connected vehicles environment. *IEEE Trans. Intell. Transp. Syst.* 13, 81–90.
- Li, X., Gao, Z., Jia, B., Zhao, X., 2009. Cellular automata model for unsignalized T-shaped intersection. *Int. J. Mod. Phys. C* 20, 501–512.
- Li, Z., Chitturi, M.V., Zheng, D., Bill, A.R., Noyce, D.A., 2013. Modeling reservation-based autonomous intersection control in VISSIM. *Transp. Res. Rec.* 2381, 81–90.
- Li, Z., Wu, Q., Yu, H., Chen, C., Zhang, G., Tian, Z.Z., Prevedouros, P.D., 2019. Temporal-spatial dimension extension-based intersection control formulation for connected and autonomous vehicle systems. *Transp. Res. Part C: Emerg. Technol.* 104, 234–248.
- Liu, M., Wang, M., Hoogendoorn, S., 2019. Optimal platoon trajectory planning approach at arterials. *Transp. Res. Rec.* 2673, 214–226.
- Ma, Z., Sun, J., Wang, Y., 2017a. A two-dimensional simulation model for modelling turning vehicles at mixed-flow intersections. *Transp. Res. Part C: Emerg. Technol.* 75, 103–119.
- Ma, Z., Xie, J., Qi, X., Xu, Y., Sun, J., 2017b. Two-dimensional simulation of turning behavior in potential conflict area of mixed-flow intersections. *Comput. Aided Civ. Infrastruct. Eng.* 32, 412–428.
- Medina, A.I.M., Van de Wouwe, N., Nijmeijer, H., 2015. Automation of a T-intersection using virtual platoons of cooperative autonomous vehicles. In: *2015 IEEE 18th International Conference on Intelligent Transportation Systems*. IEEE, pp. 1696–1701.
- Munigety, C.R., Mathew, T.V., 2016. Towards behavioral modeling of drivers in mixed traffic conditions. *Transp. Dev. Econ.* 2, 6.
- Nakayama, A., Hasebe, K., Sugiyama, Y., 2005. Instability of pedestrian flow and phase structure in a two-dimensional optimal velocity model. *Phys. Rev. E* 71, 036121.
- Newell, G.F., 2002. A simplified car-following theory: a lower order model. *Transp. Res. Part B: Methodol.* 36, 195–205.
- Rahman, M., Chowdhury, M., Xie, Y., He, Y., 2013. Review of microscopic lane-changing models and future research opportunities. *IEEE Trans. Intell. Transp. Syst.* 14, 1942–1956.
- Rakha, H., Lucic, I., Demarchi, S.H., Setti, J.R., Aerde, M.V., 2001. Vehicle dynamics model for predicting maximum truck acceleration levels. *J. Transp. Eng.* 127, 418–425.
- Rakha, H., Pasumarthy, P., Adjerid, S., 2009. A simplified behavioral vehicle longitudinal motion model. *Transp. Lett.* 1, 95–110.
- Ruskin, H.J., Wang, R., 2002. Modeling traffic flow at an urban unsignalized intersection. In: *International Conference on Computational Science*. Springer, pp. 381–390.
- Sasaki, M., Nagatani, T., 2003. Transition and saturation of traffic flow controlled by traffic lights. *Physica A: Stat. Mech. Appl.* 325, 531–546.

- Spyropoulou, I., 2007. Modelling a signal controlled traffic stream using cellular automata. *Transp. Res. Part C: Emerg. Technol.* 15, 175–190.
- Tang, T., Huang, H., Xu, G., Xue, Y., 2008. A traffic flow model considering signal light influence and its numerical simulation. *Acta Phys. Sin.* 57, 56–60.
- Tang, T., Luo, X., Zhang, J., Chen, L., 2018. Modeling electric bicycle's lane-changing and retrograde behaviors. *Physica A-Stat. Mech. Appl.* 490, 1377–1386.
- Tang, T., Yi, Z., Zhang, J., Zheng, N., 2017a. Modelling the driving behaviour at a signalised intersection with the information of remaining green time. *IET Intell. Transp. Syst.* 11, 596–603.
- Tang, T., Zhang, J., Liu, K., 2017b. A speed guidance model accounting for the driver's bounded rationality at a signalized intersection. *Physica A: Stat. Mech. Appl.* 473, 45–52.
- Tonguz, O.K., Viriyasitavat, W., Bai, F., 2009. Modeling urban traffic: a cellular automata approach. *IEEE Commun. Mag.* 47, 142–150.
- Vasic, J., Ruskin, H.J., 2012. Cellular automata simulation of traffic including cars and bicycles. *Physica A: Stat. Mech. Appl.* 391, 2720–2729.
- Wang, M., 2018. Infrastructure assisted adaptive driving to stabilise heterogeneous vehicle strings. *Transp. Res. Part C: Emerg. Technol.* 91, 276–295.
- Wang, M., Daamen, W., Hoogendoorn, S.P., van Arem, B., 2014a. Rolling horizon control framework for driver assistance systems. Part I: mathematical formulation and non-cooperative systems. *Transp. Res. Part C: Emerg. Technol.* 40, 271–289.
- Wang, M., Daamen, W., Hoogendoorn, S.P., van Arem, B., 2014b. Rolling horizon control framework for driver assistance systems. Part II: cooperative sensing and cooperative control. *Transp. Res. Part C: Emerg. Technol.* 40, 290–311.
- Wang, M., Hoogendoorn, S.P., Daamen, W., Hoogendoorn, R., van Arem, B., 2012. Driver support and cooperative systems control design: framework and preliminary results. In: 2012 American Control Conference (ACC). IEEE, pp. 5751–5756.
- Xie, D., Gao, Z., Zhao, X., Li, K., 2009. Characteristics of mixed traffic flow with non-motorized vehicles and motorized vehicles at an unsignalized intersection. *Physica A: Stat. Mech. Appl.* 388, 2041–2050.
- Xu, B., Ban, X.J., Bian, Y., Li, W., Wang, J., Li, S.E., Li, K., 2018. Cooperative method of traffic signal optimization and speed control of connected vehicles at isolated intersections. *IEEE Trans. Intell. Transp. Syst.* 1–14.
- Yang, D., Zhou, X., Su, G., Liu, S., 2018. Model and simulation of the heterogeneous traffic flow of the urban signalized intersection with an island work zone. *IEEE Trans. Intell. Transp. Syst.* 1–9.
- Yu, C., Feng, Y., Liu, H.X., Ma, W., Yang, X., 2018. Integrated optimization of traffic signals and vehicle trajectories at isolated urban intersections. *Transp. Res. Part B: Methodol.* 112, 89–112.
- Yu, C., Sun, W., Liu, H.X., Yang, X., 2019. Managing connected and automated vehicles at isolated intersections: from reservation- to optimization-based methods. *Transp. Res. Part B: Methodol.* 122, 416–435.
- Yu, S., Shi, Z., 2014. An extended car-following model at signalized intersections. *Physica A: Stat. Mech. Appl.* 407, 152–159.
- Yu, S., Shi, Z., 2015. Analysis of car-following behaviors considering the green signal countdown device. *Nonlinear Dynam.* 82, 731–740.
- Zeng, W., Chen, P., Nakamura, H., Iryo-Asano, M., 2014. Application of social force model to pedestrian behavior analysis at signalized crosswalk. *Transp. Res. Part C: Emerg. Technol.* 40, 143–159.
- Zhao, J., Li, P., 2016. An extended car-following model with consideration of speed guidance at intersections. *Physica A: Stat. Mech. Appl.* 461, 1–8.
- Zhao, X., Gao, Z., Jia, B., 2007. The capacity drop caused by the combined effect of the intersection and the bus stop in a CA model. *Physica A: Stat. Mech. Appl.* 385, 645–658.
- Zheng, Z., 2014. Recent developments and research needs in modeling lane changing. *Transp. Res. Part B: Methodol.* 60, 16–32.
- Zhu, F., Ukkusuri, S.V., 2018. Modeling the proactive driving behavior of connected vehicles: a cell-based simulation approach. *Comp.-Aided Civ. Infrastruct. Eng.* 33, 262–281.
- Zohdy, I.H., Rakha, H.A., 2016. Intersection management via vehicle connectivity: the intersection cooperative adaptive cruise control system concept. *J. Intell. Transp. Syst.* 20, 17–32.