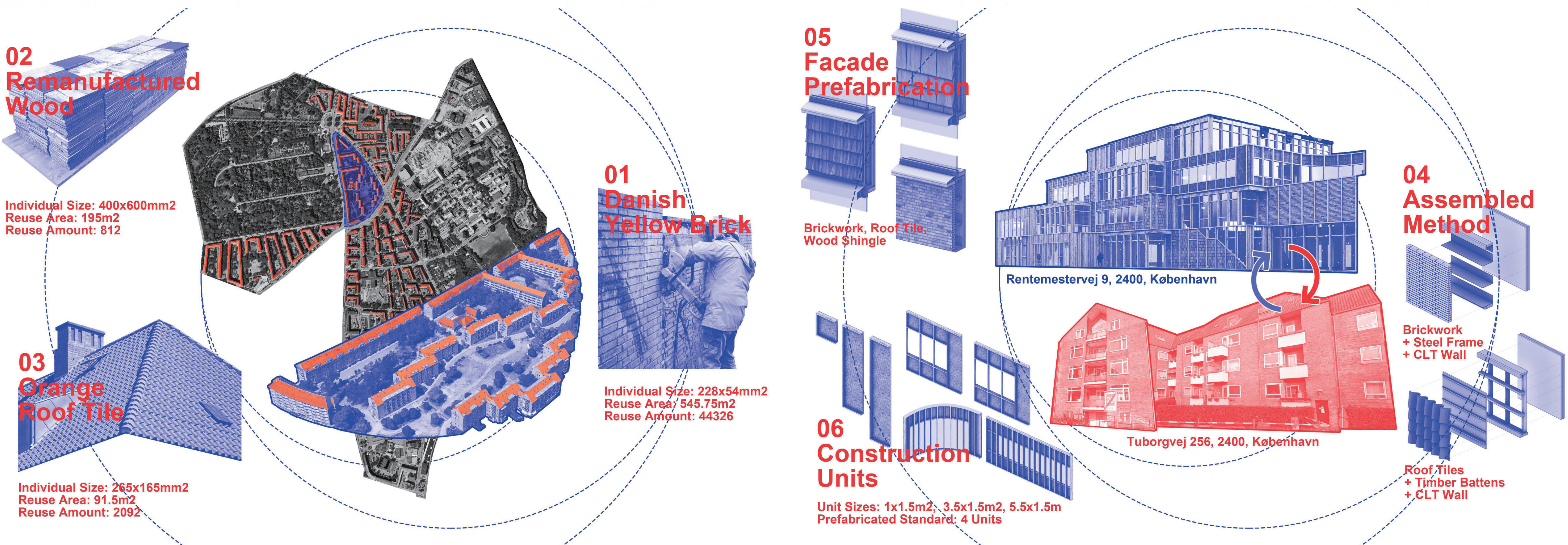


Un-Fragmented Nostalgia:  
Public Condenser, Copenhagen

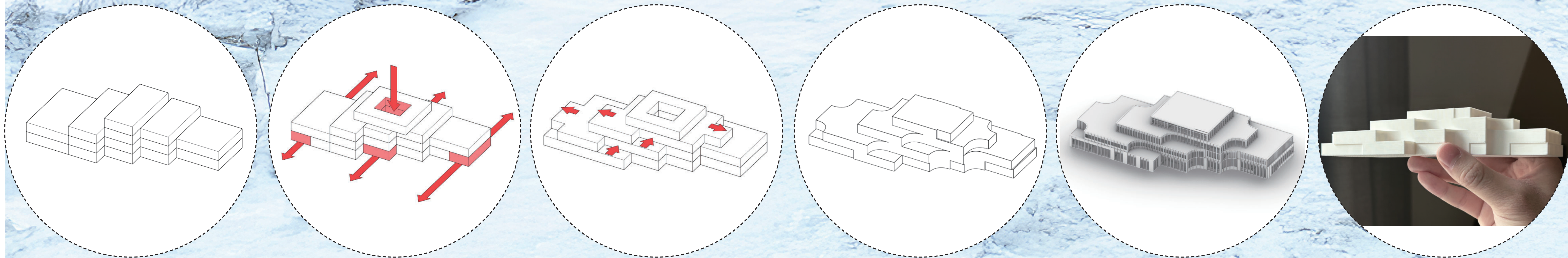
Yichen Li (Richard)  
5992346



Urban Mining and Reuse:

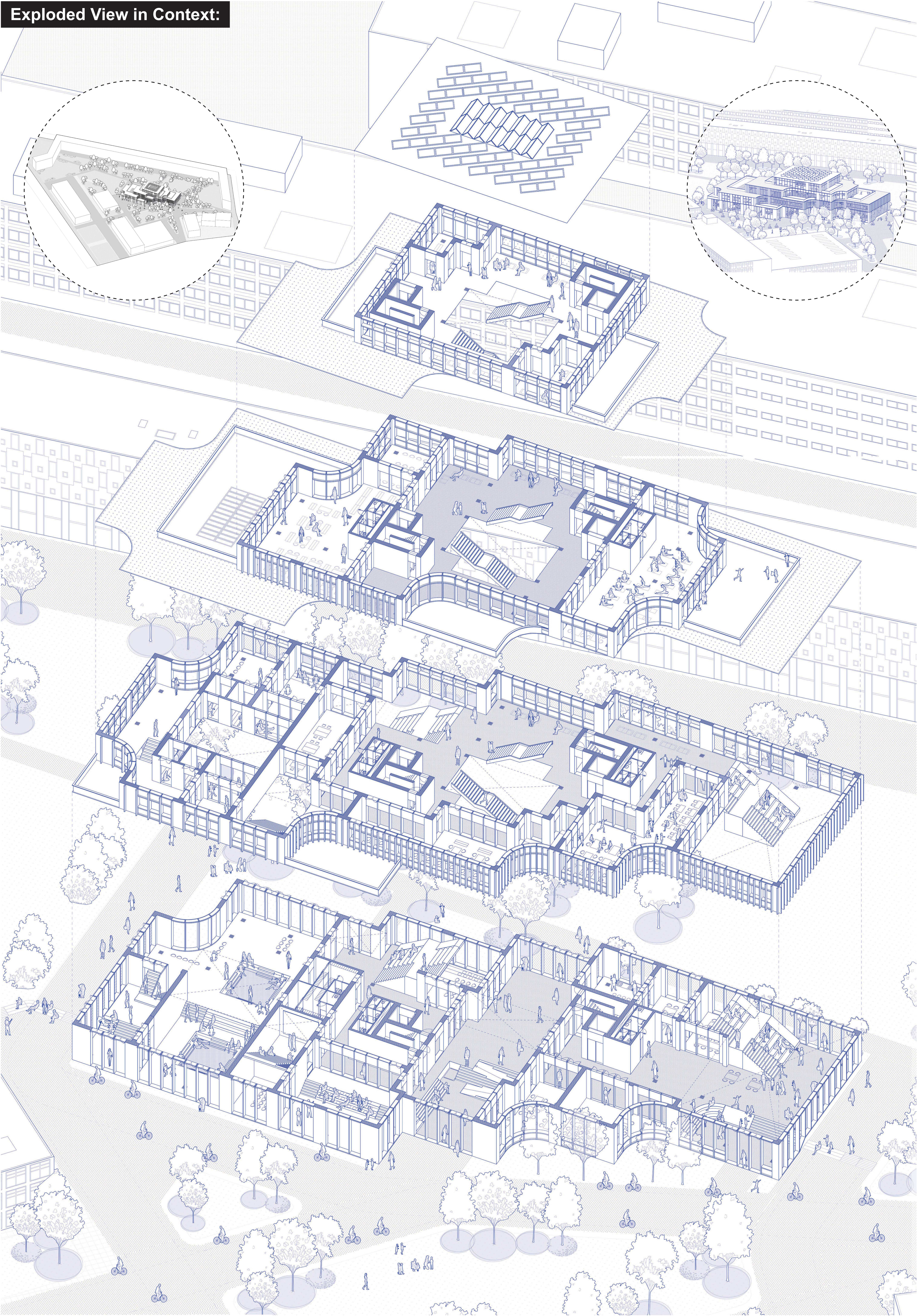


Form Giving:





Exploded View in Context:

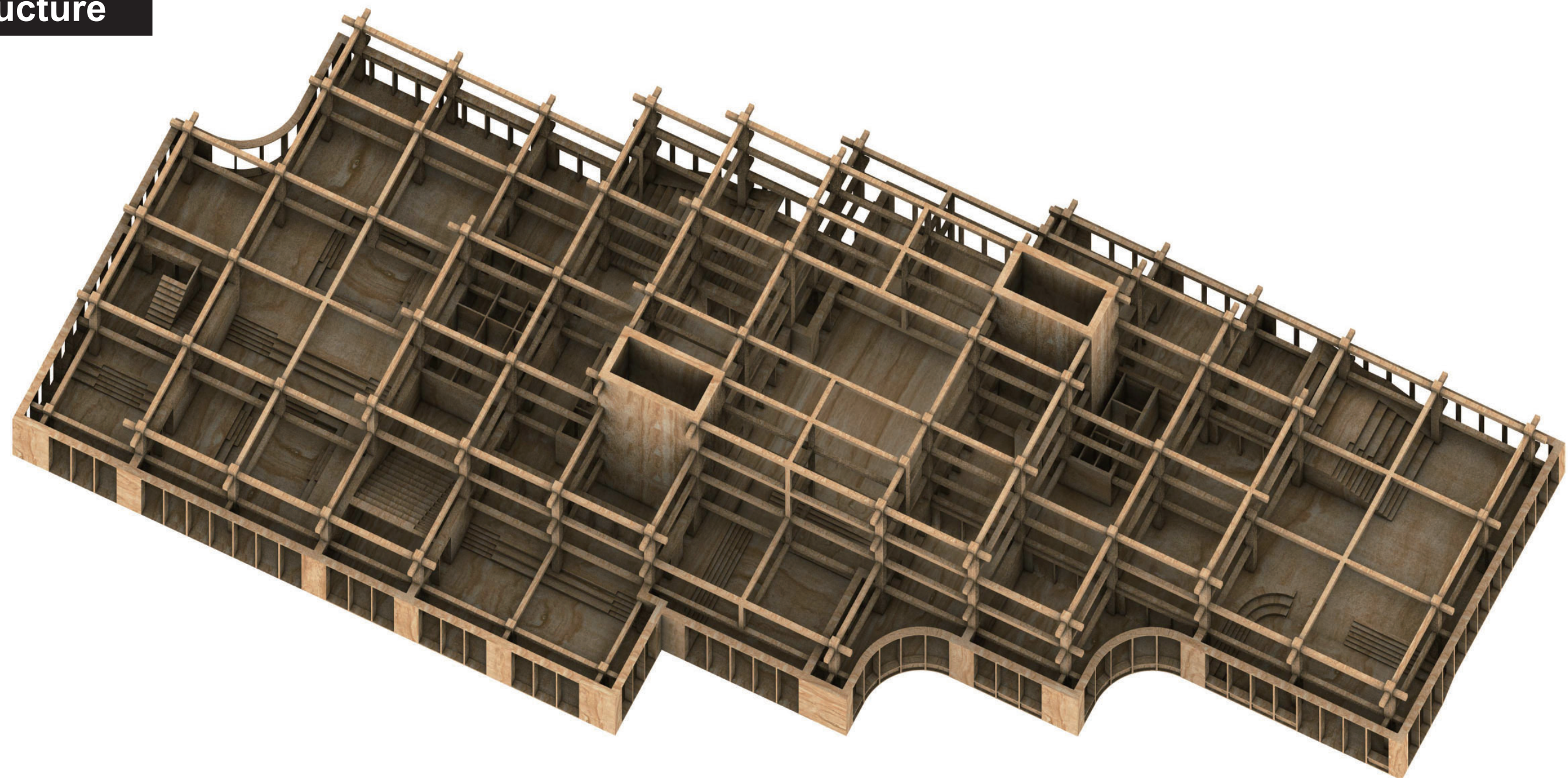




Axonometric Exploded:



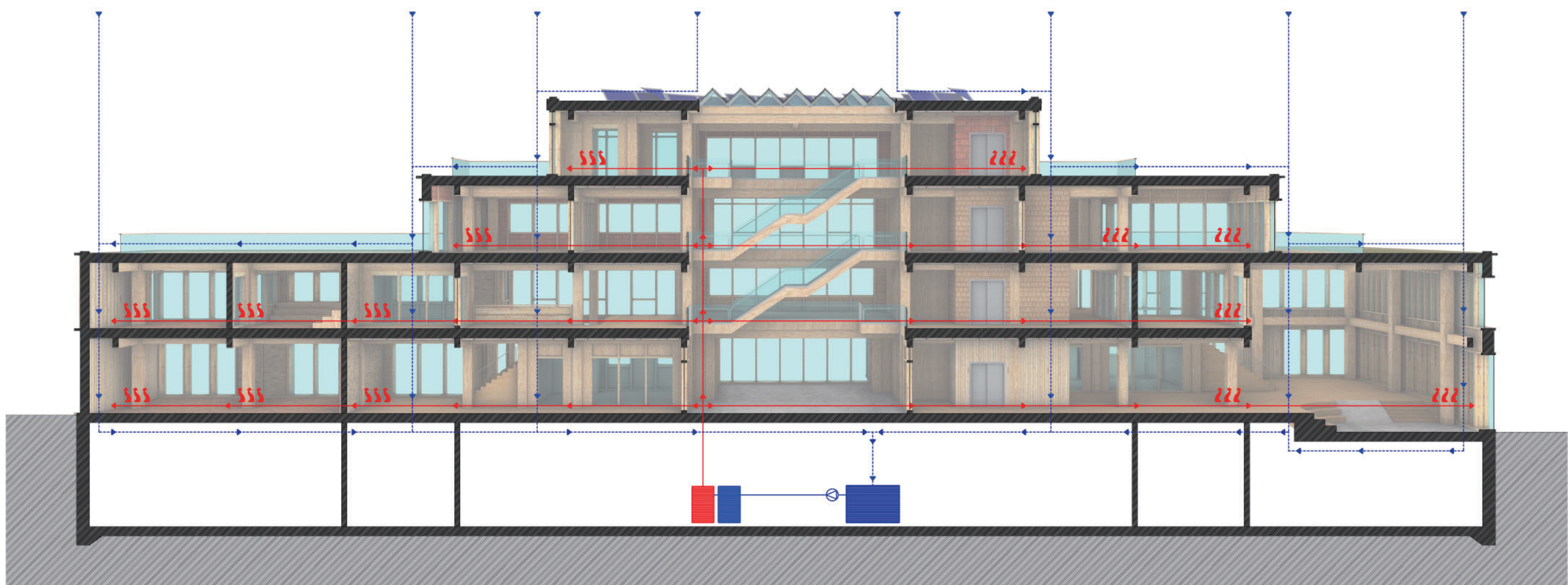
Structure



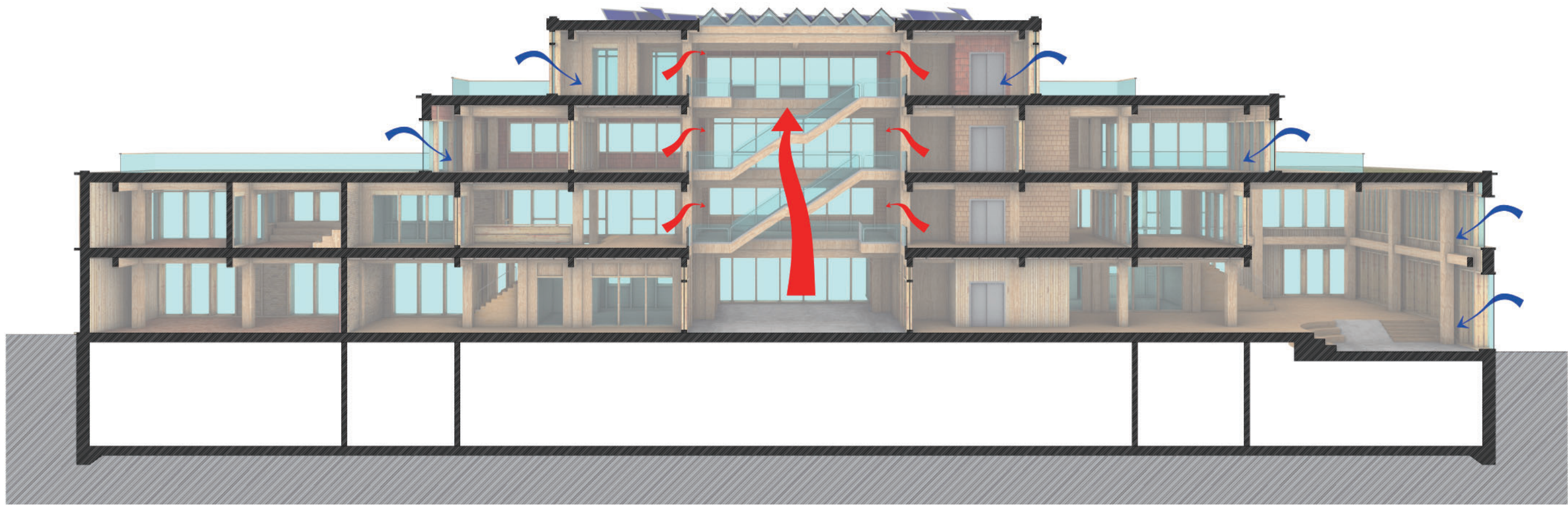
Cross Section



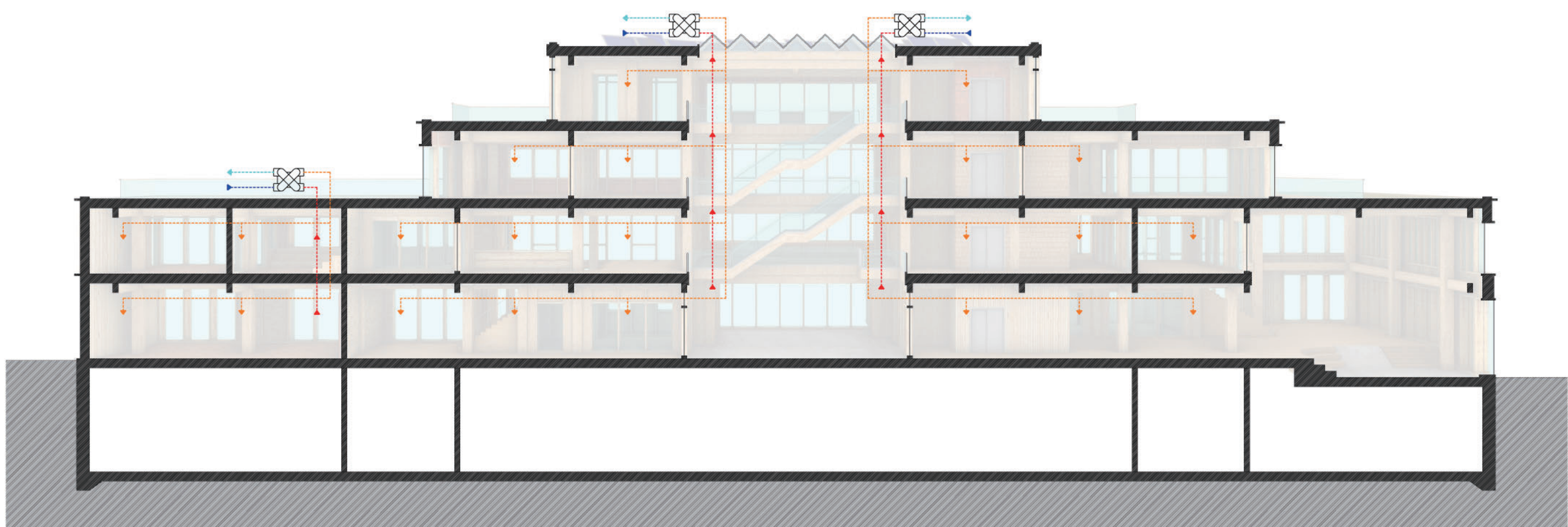
Long Section (Water)



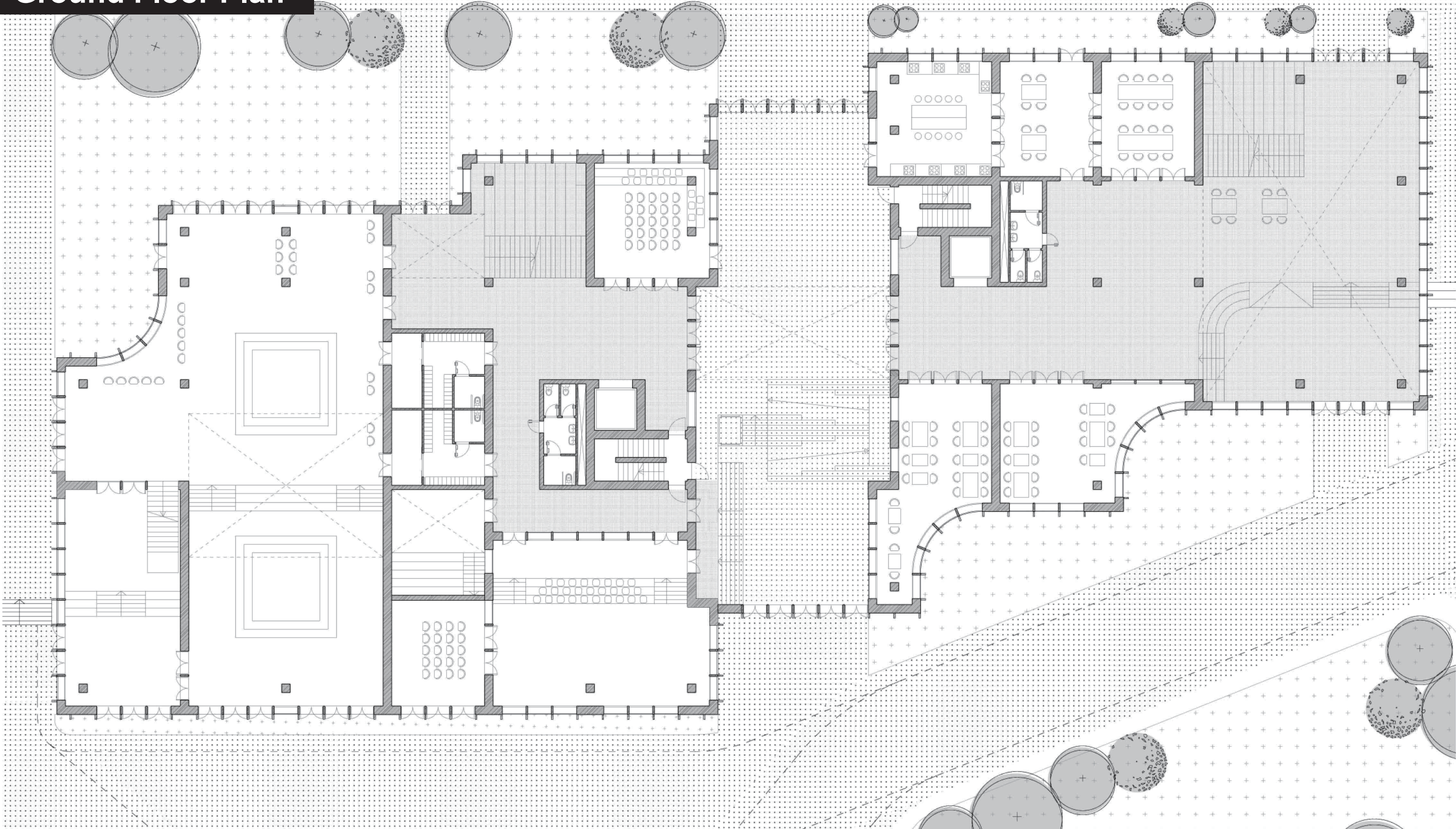
Long Section (Natural Ventilation)



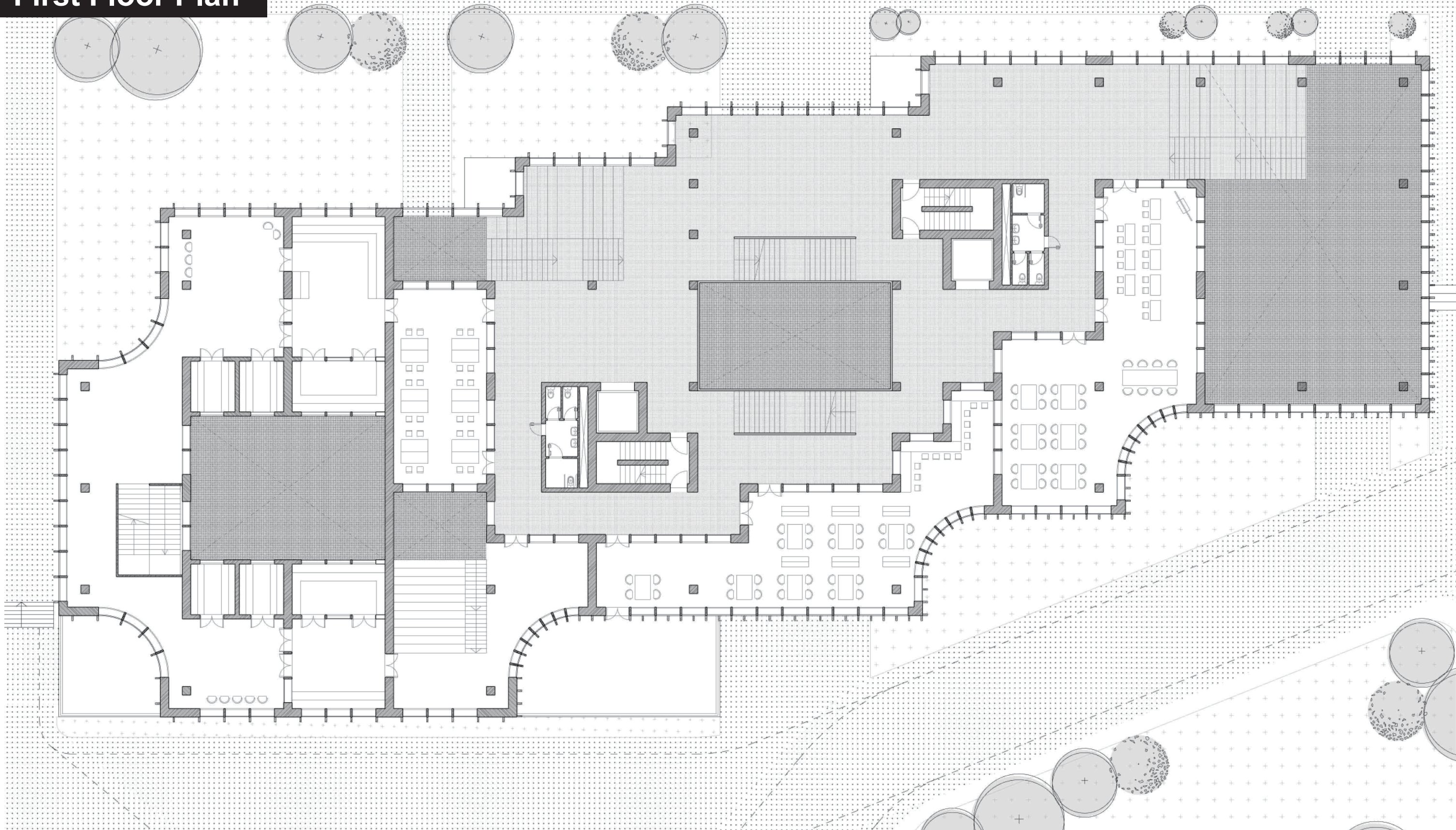
Long Section (MVHR)



Ground Floor Plan



First Floor Plan





Perspectives in Context:



From West Street



From Campus



From East Street



From Park

Interior:



Playground Lobby



Social Staircases



Passage





Interior:



Bathhouse



Atrium



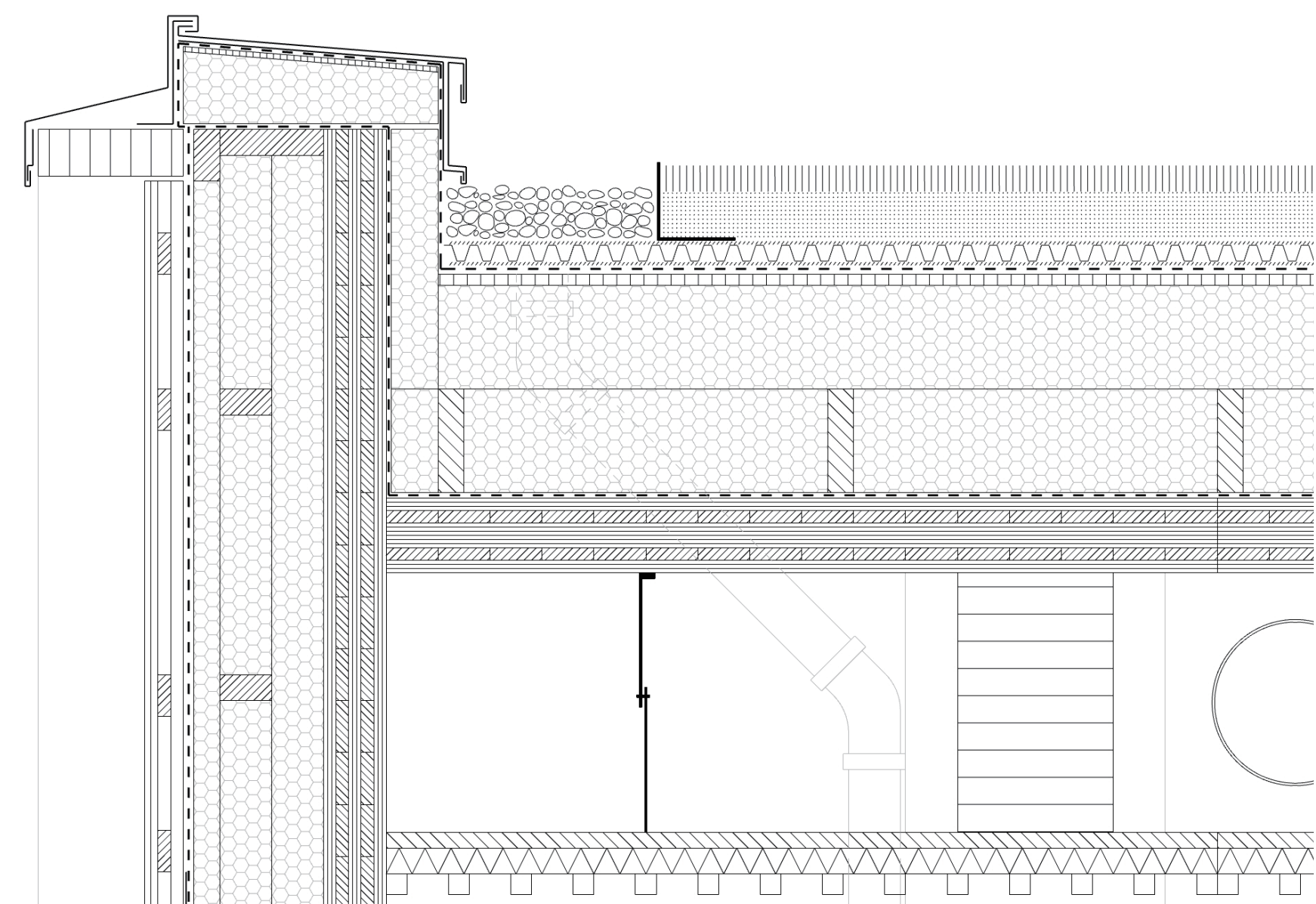
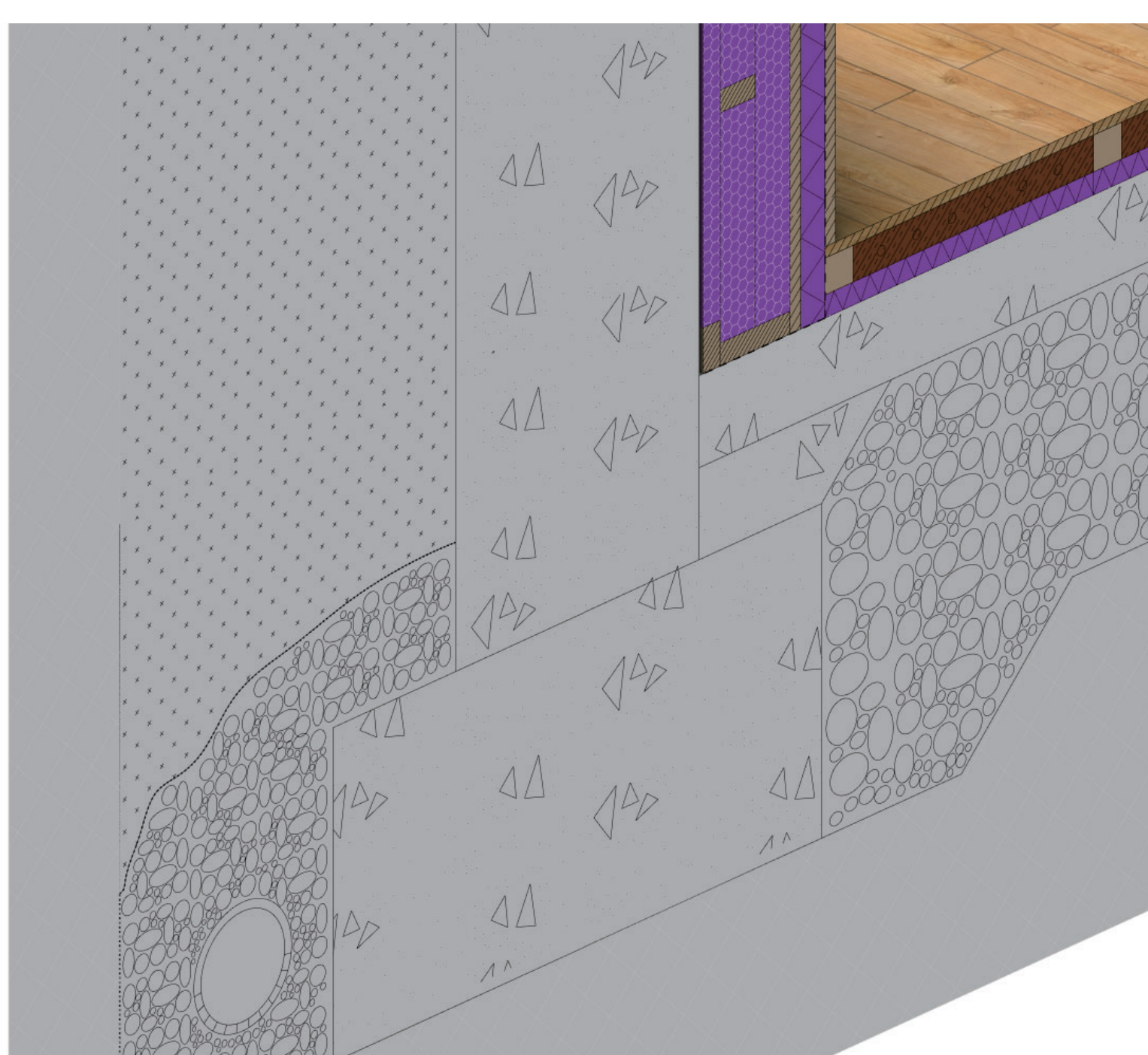
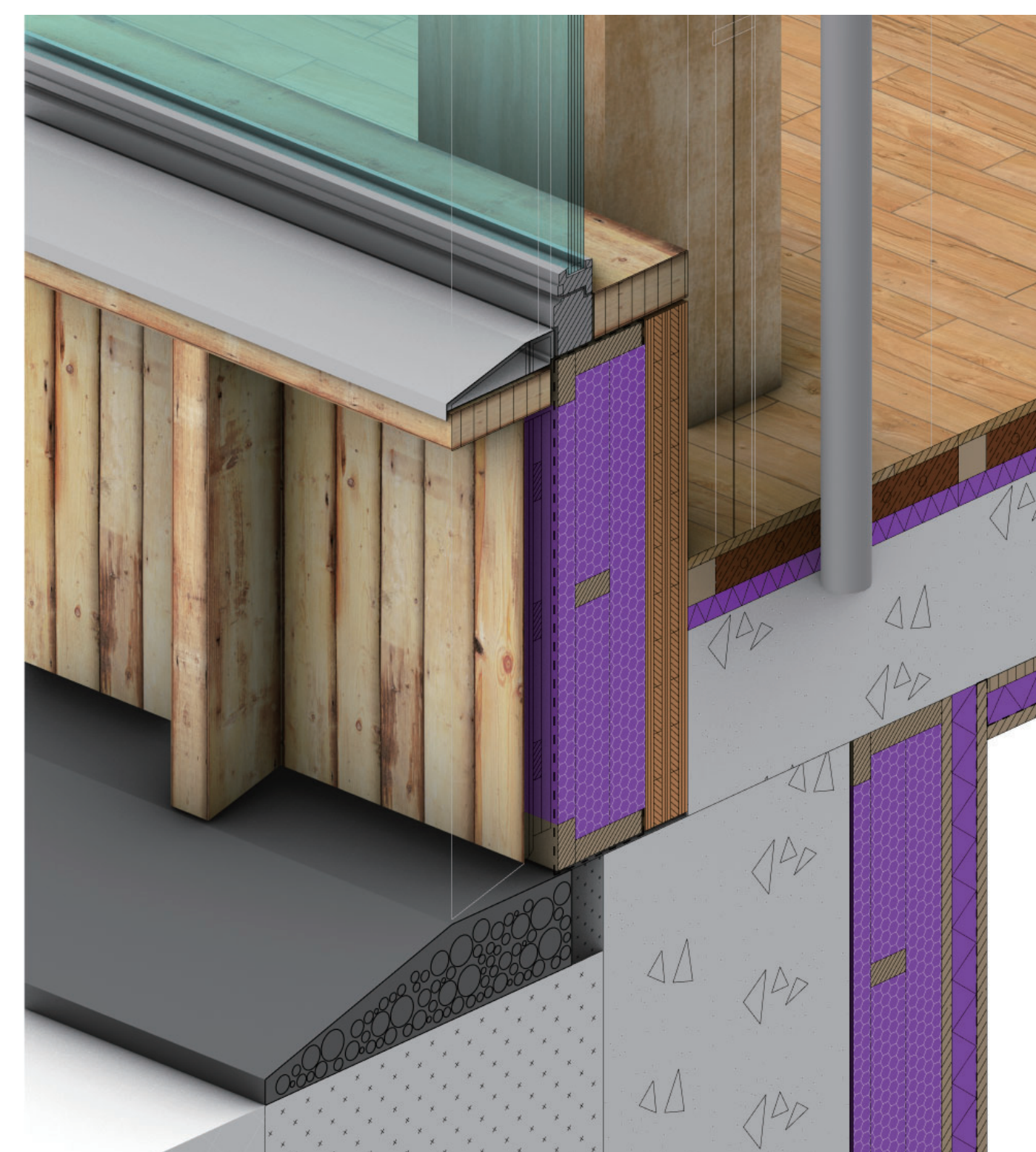
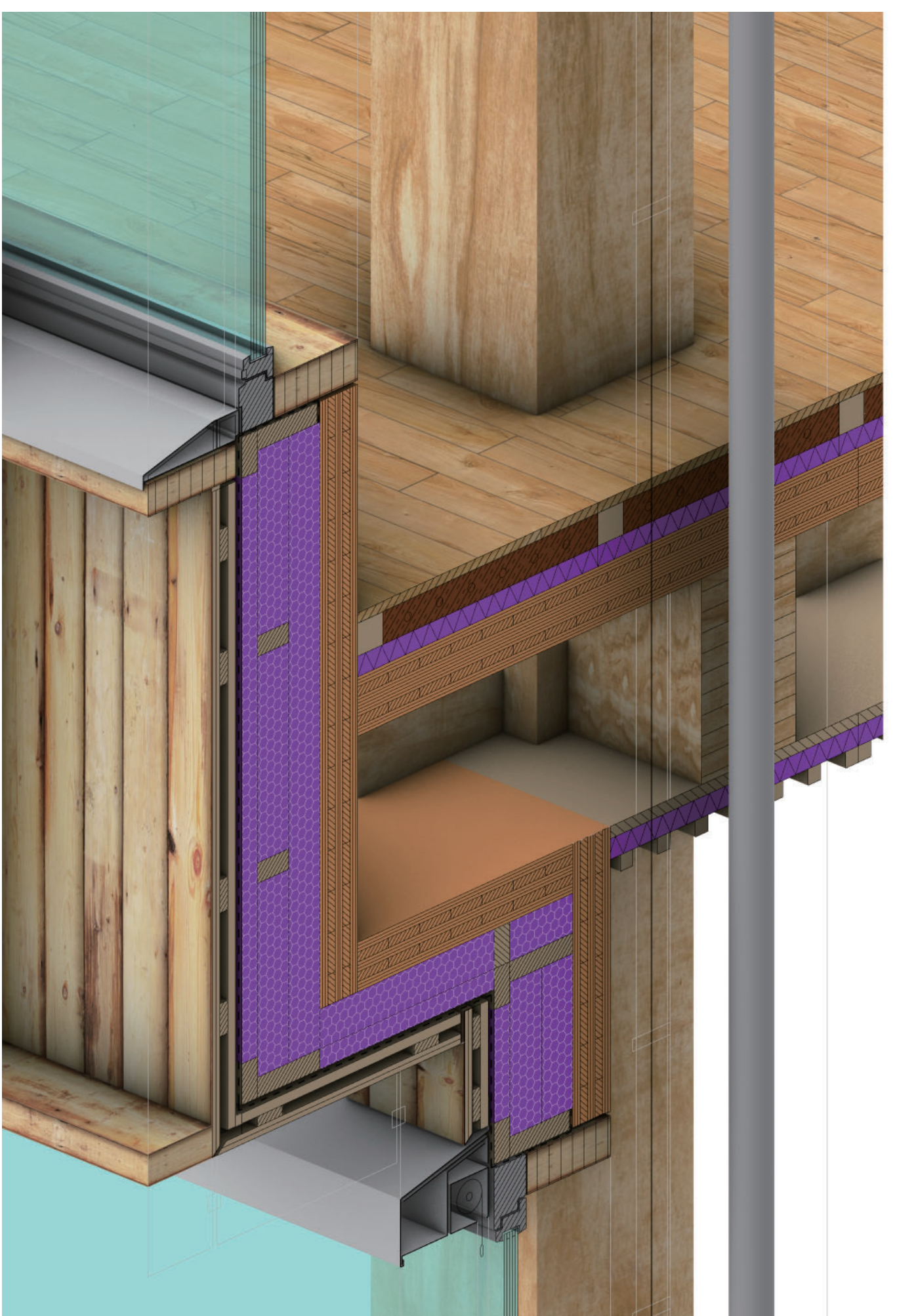
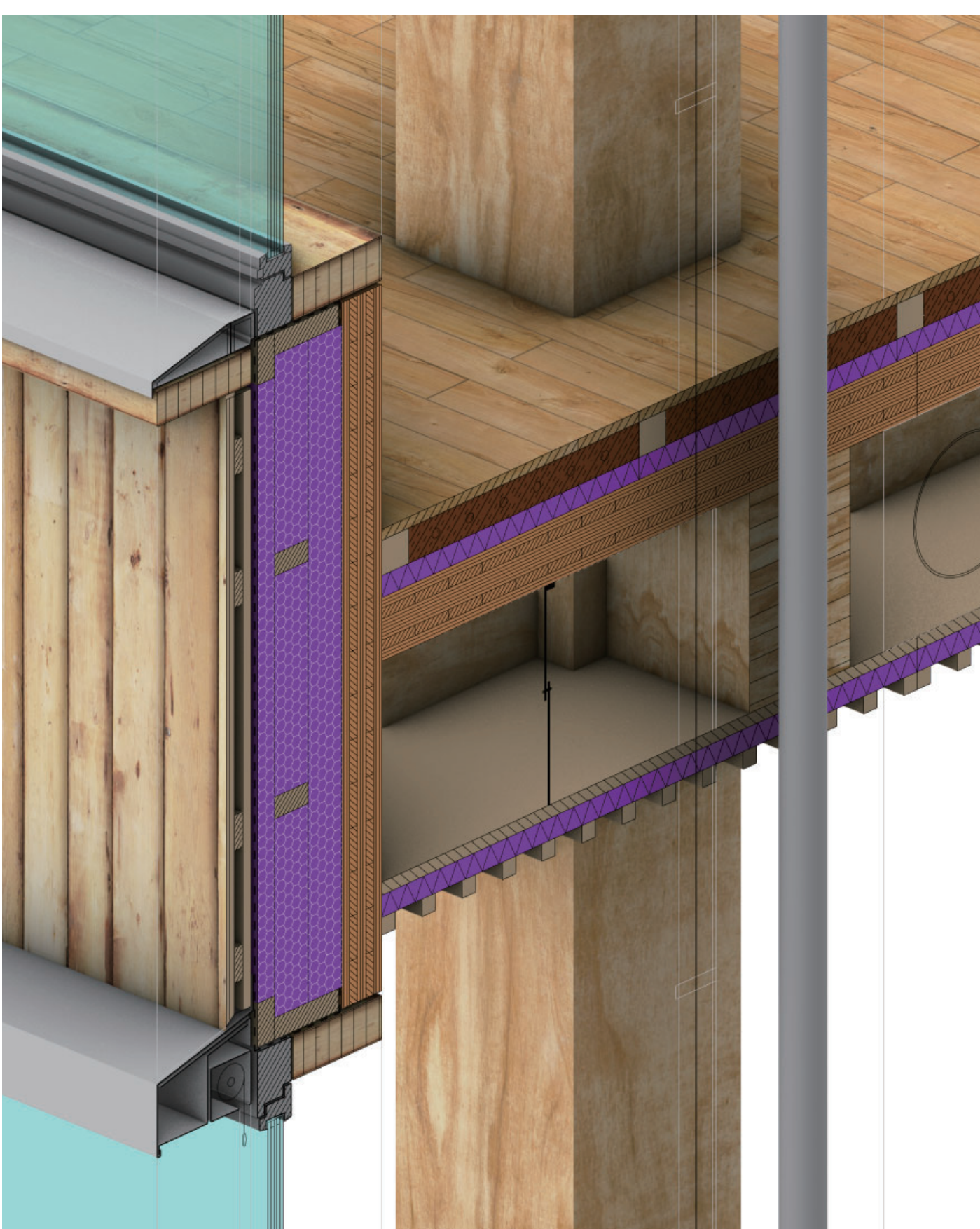
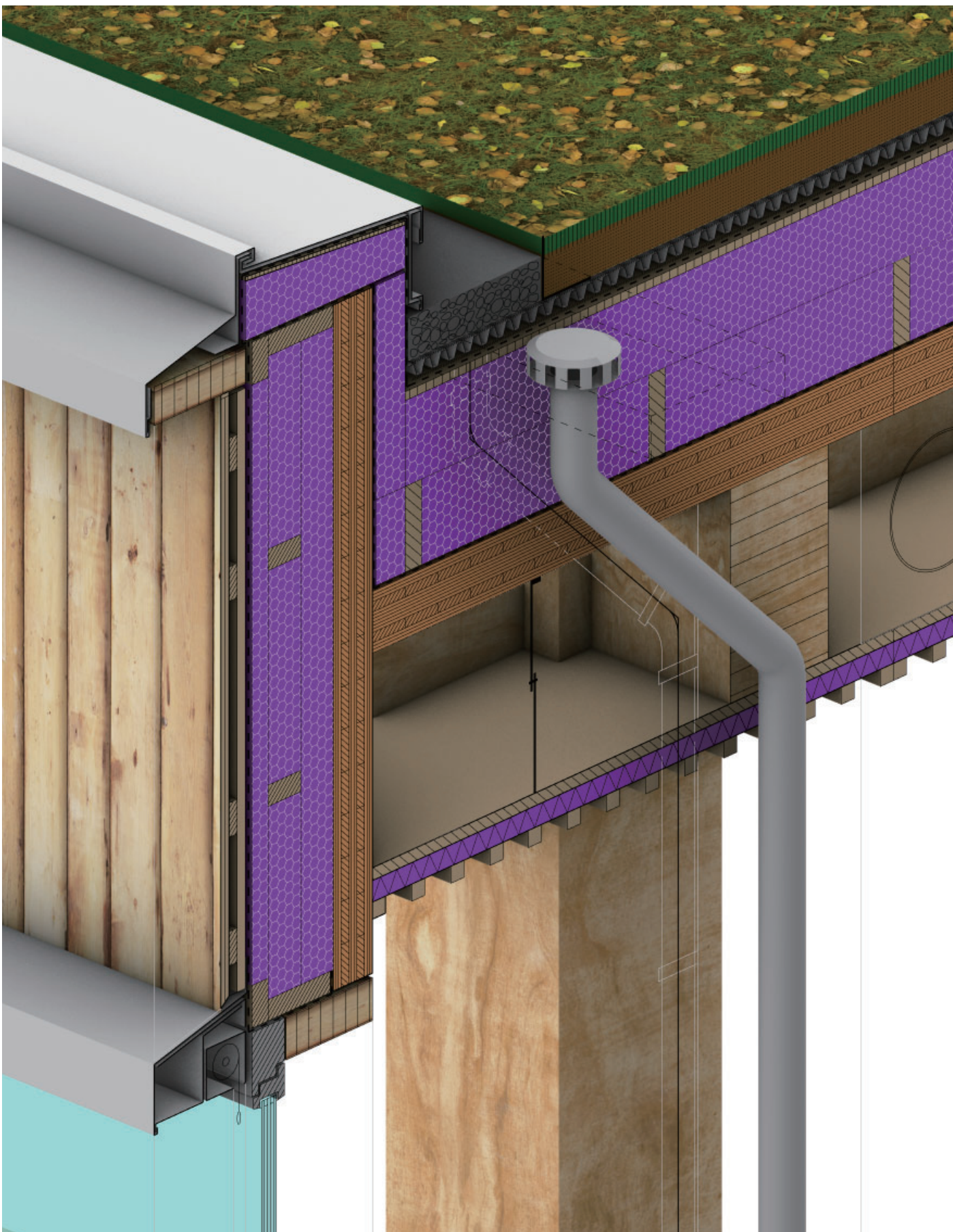
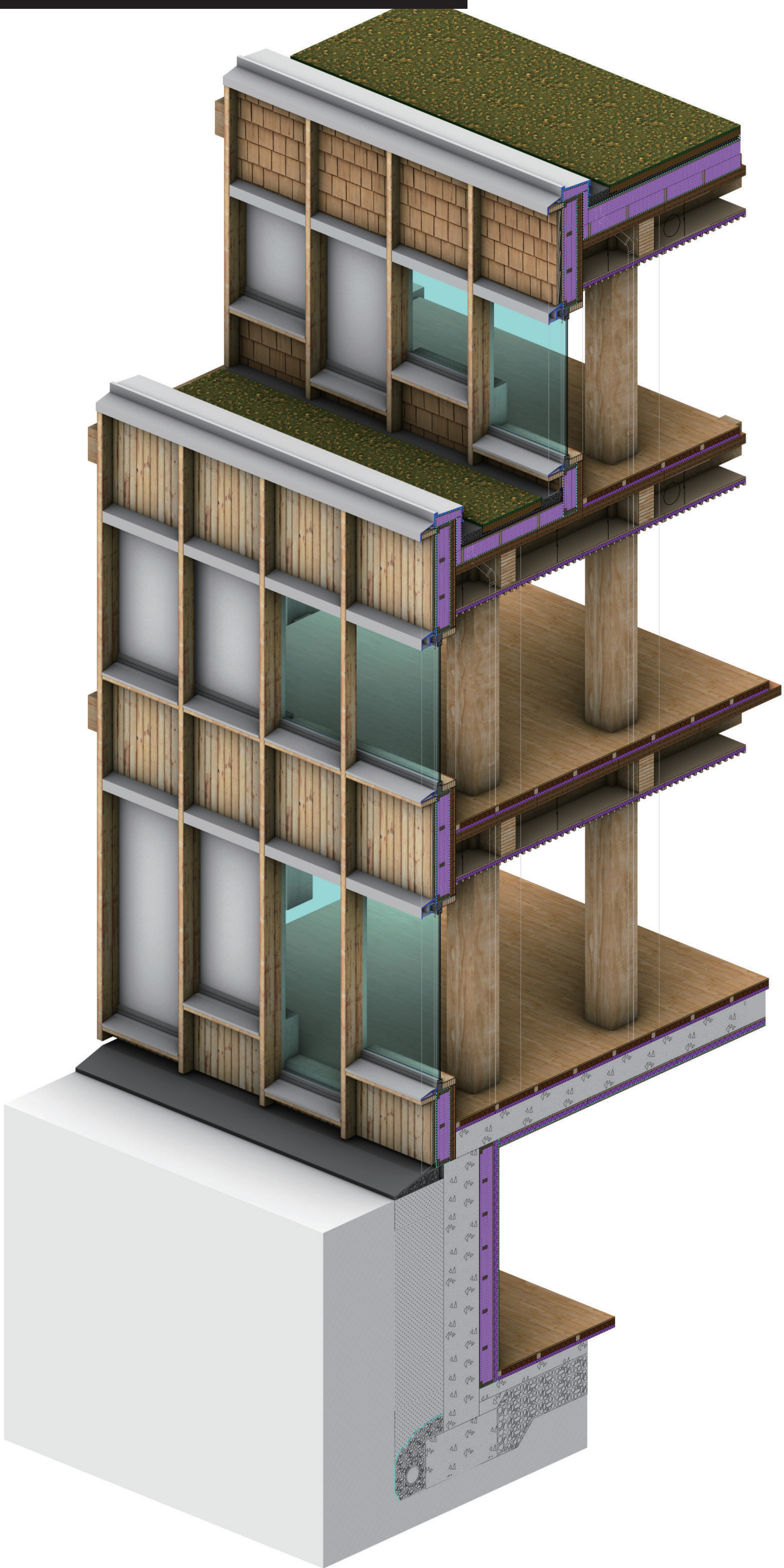
Facade and Terrace



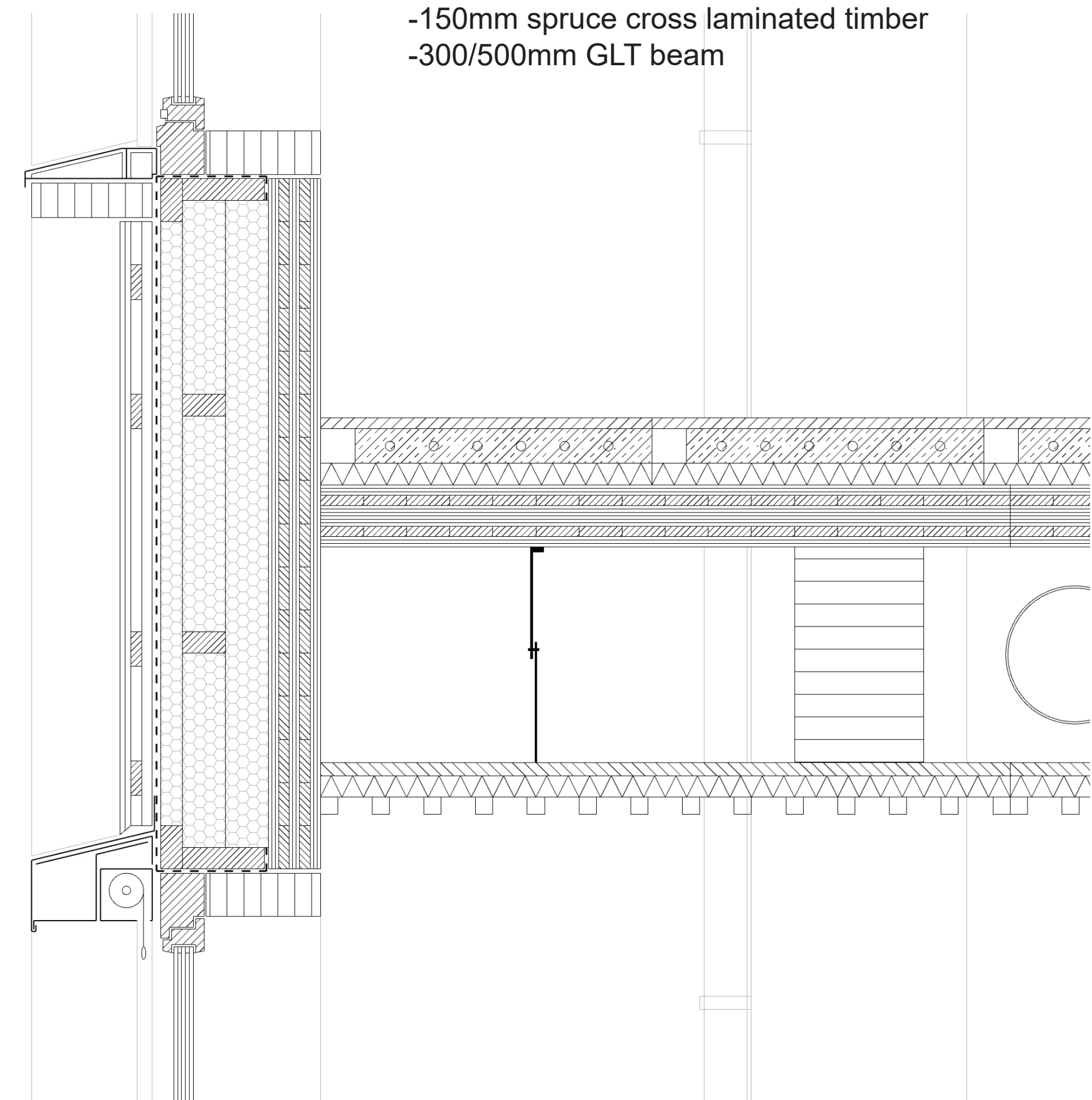
Panorama View



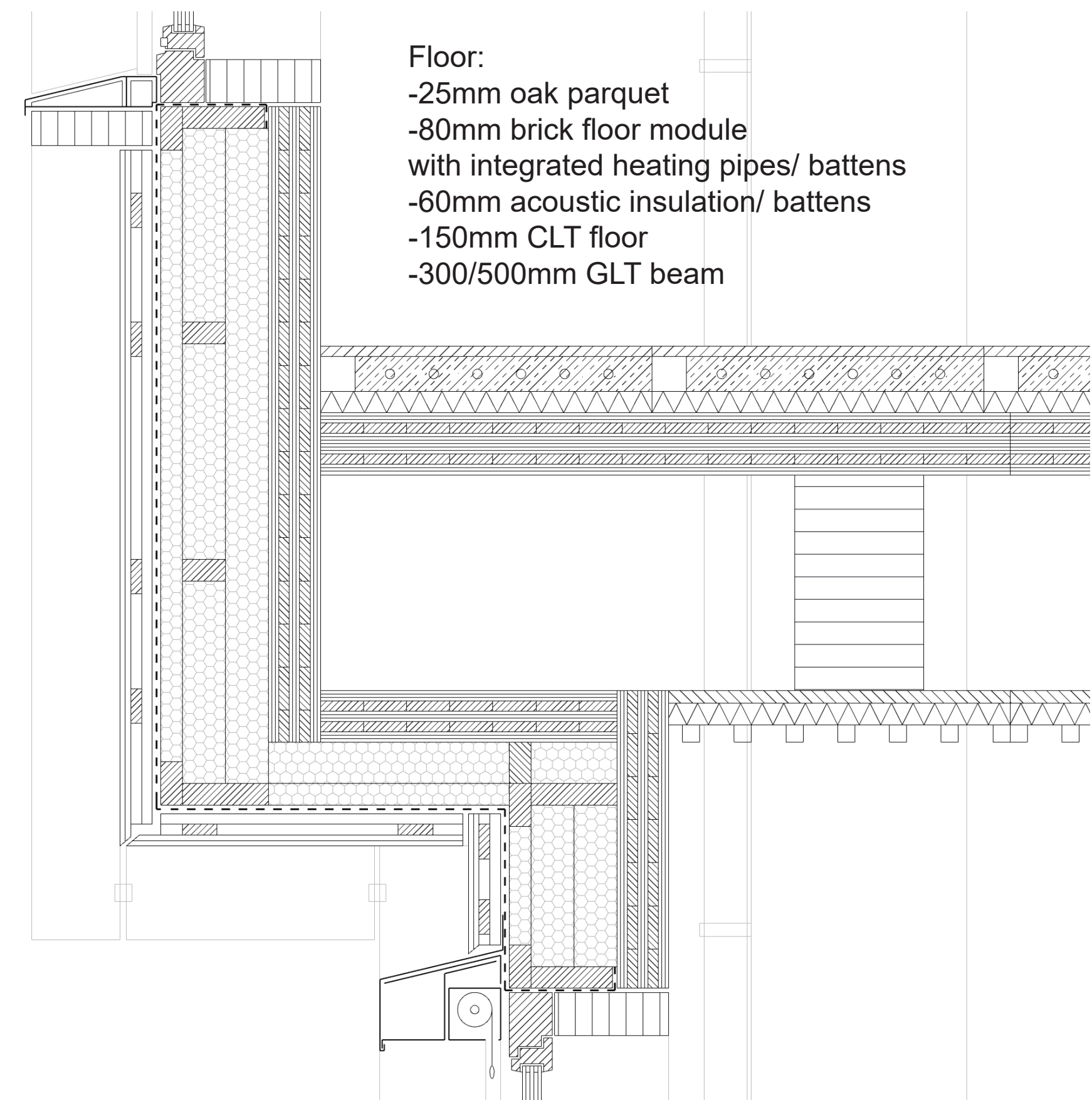
3D Fragment (Park Side)



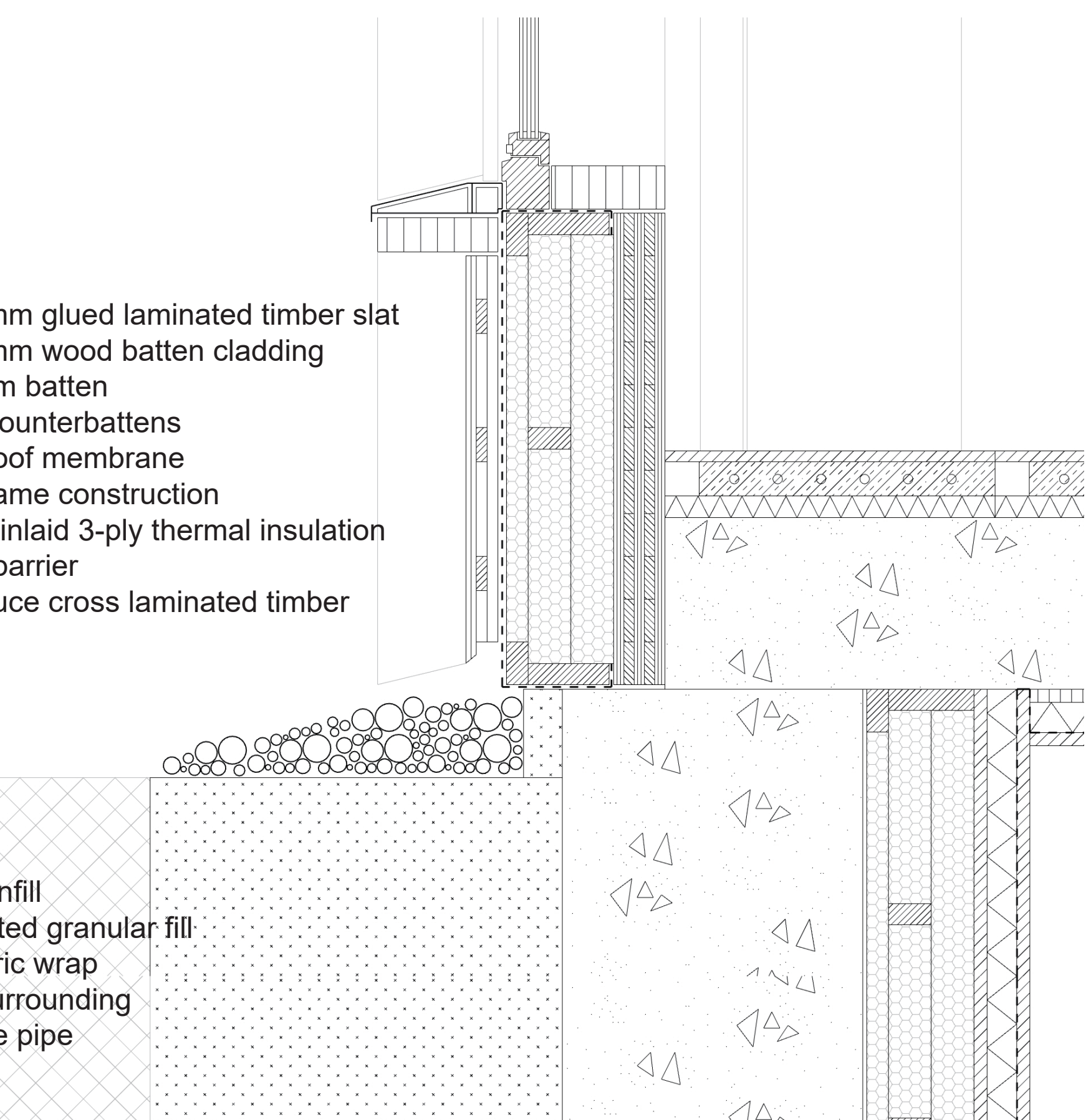
- Roof:
- extensive roof greening substrate
  - 10mm drainage mat
  - Pluvia insulated drainage system
  - 30mm drain tile
  - waterproof membrane
  - 20mm wood fibre panel
  - 300mm foam glass thermal insulation
  - vapour barrier
  - 150mm spruce cross laminated timber
  - 300/500mm GLT beam



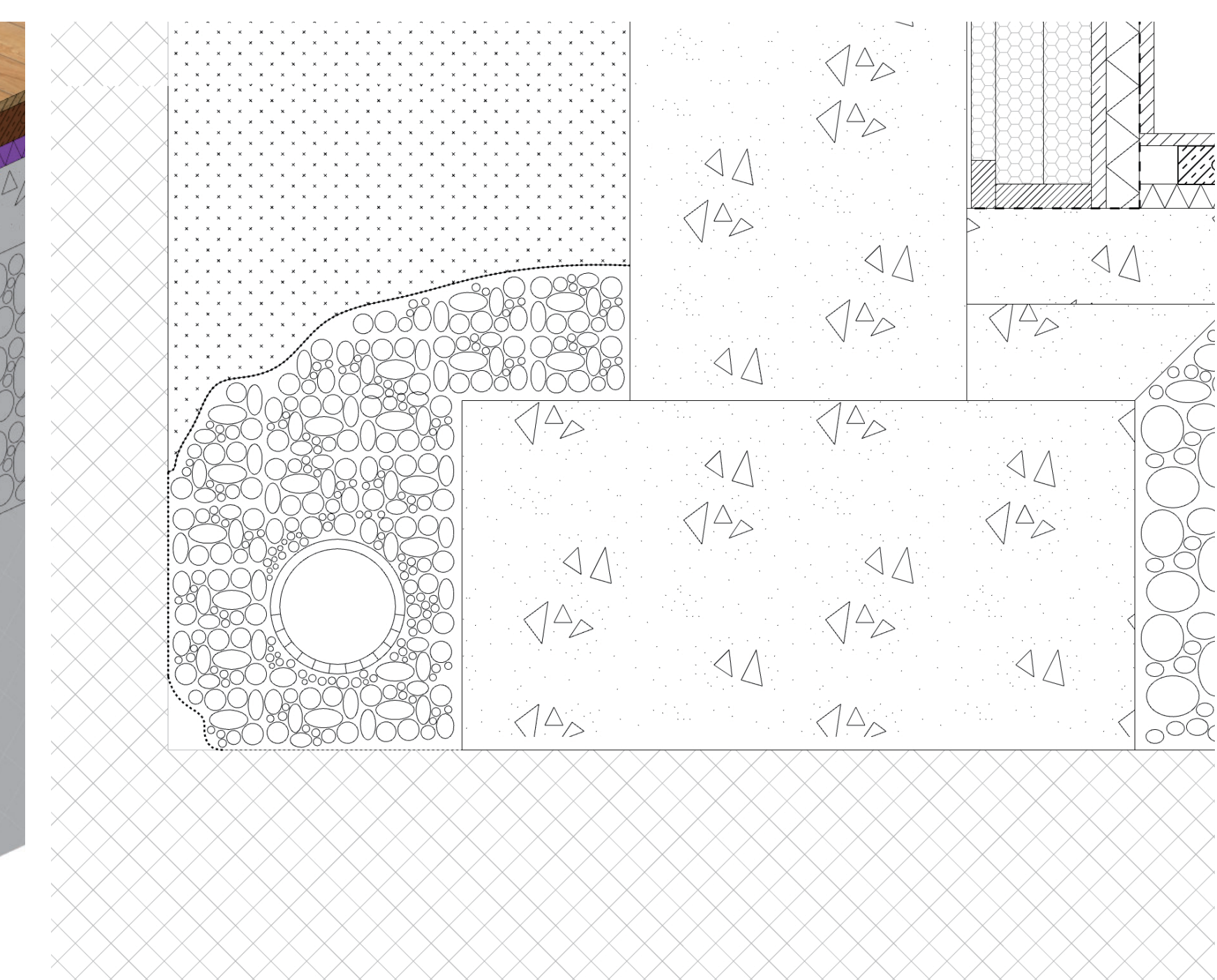
- Floor:
- 25mm oak parquet
  - 80mm brick floor module with integrated heating pipes/ battens
  - 60mm acoustic insulation/ battens
  - 150mm CLT floor
  - 300/500mm GLT beam



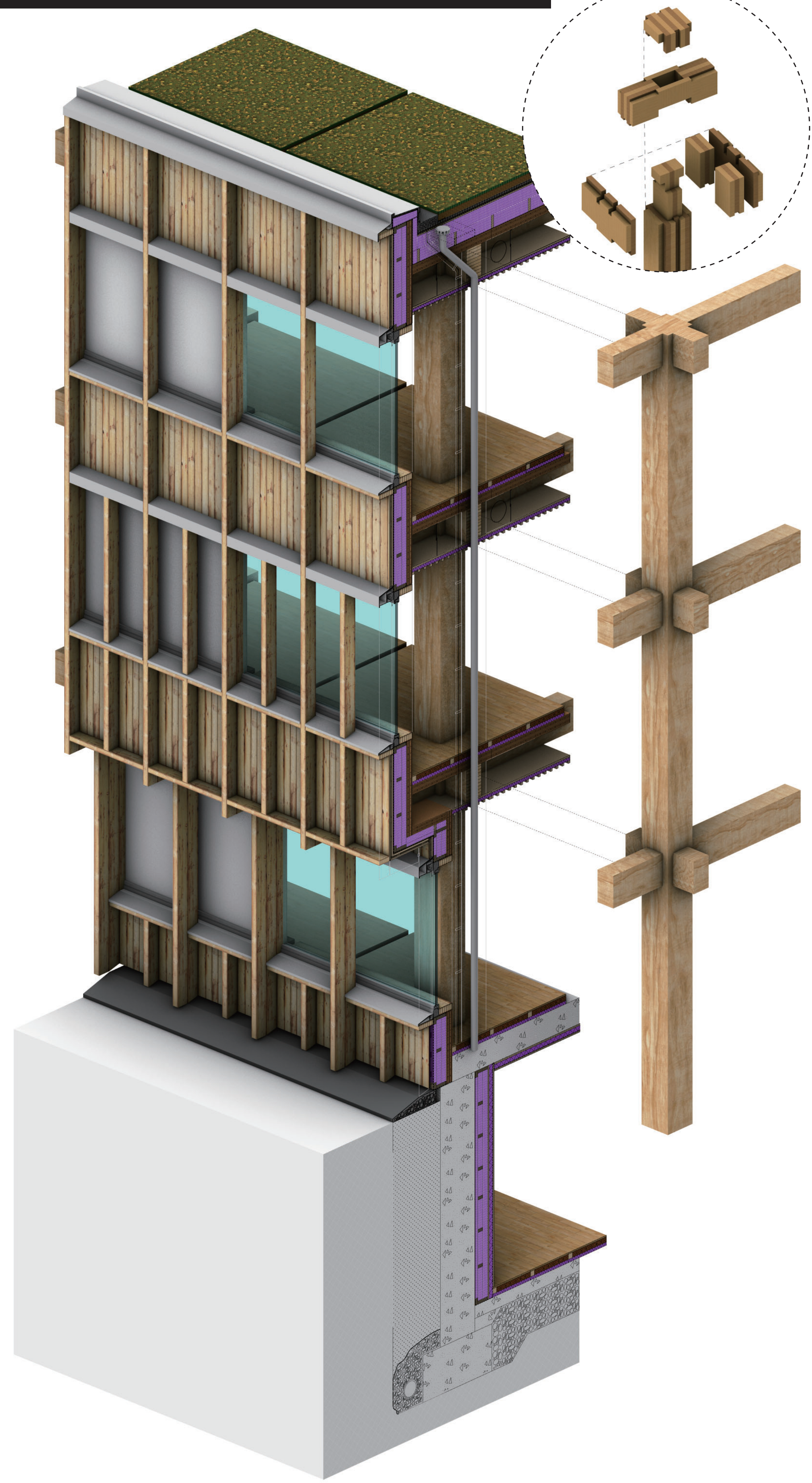
- Facade:
- 90/225mm glued laminated timber slat
  - 22/145mm wood batten cladding
  - 28/70mm batten
  - 34mm counterbattens
  - waterproof membrane
  - timber frame construction
  - 260mm inlaid 3-ply thermal insulation
  - vapour barrier
  - 120 spruce cross laminated timber



- Ground:
- pebble infill
  - compacted granular fill
  - geo-fabric wrap
  - stone surrounding
  - drainage pipe



3D Fragment (Campus Side)





Model 1:100:

