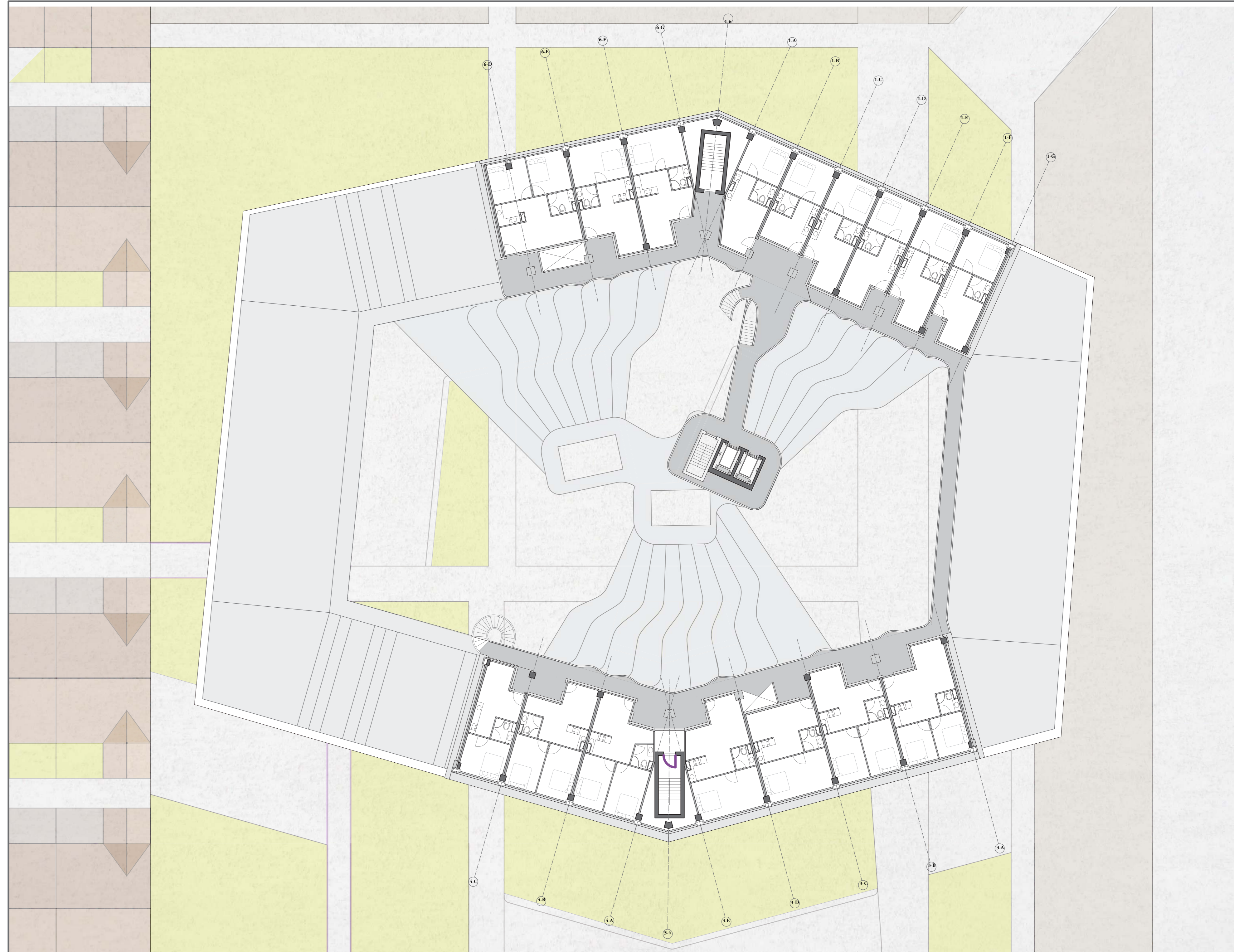
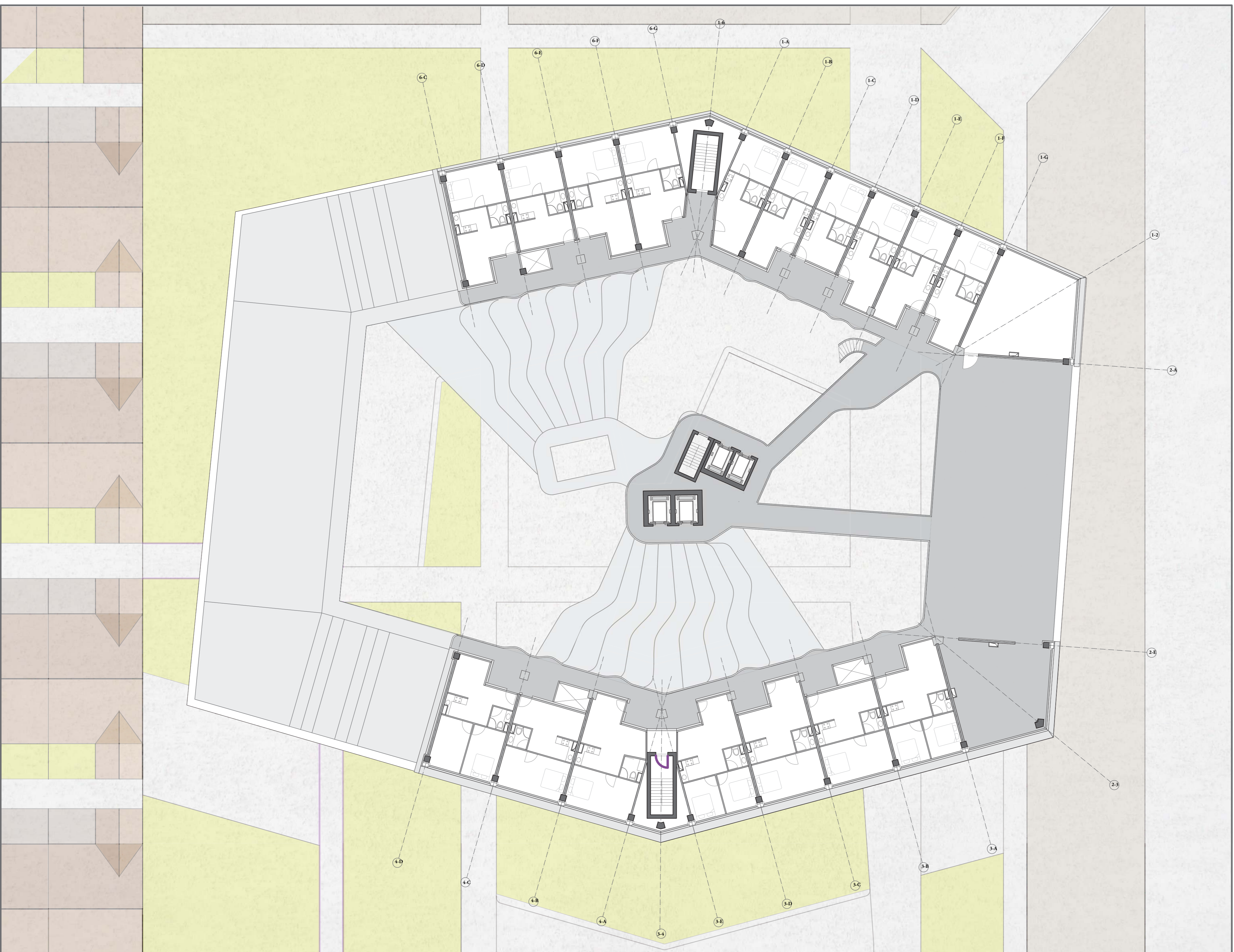
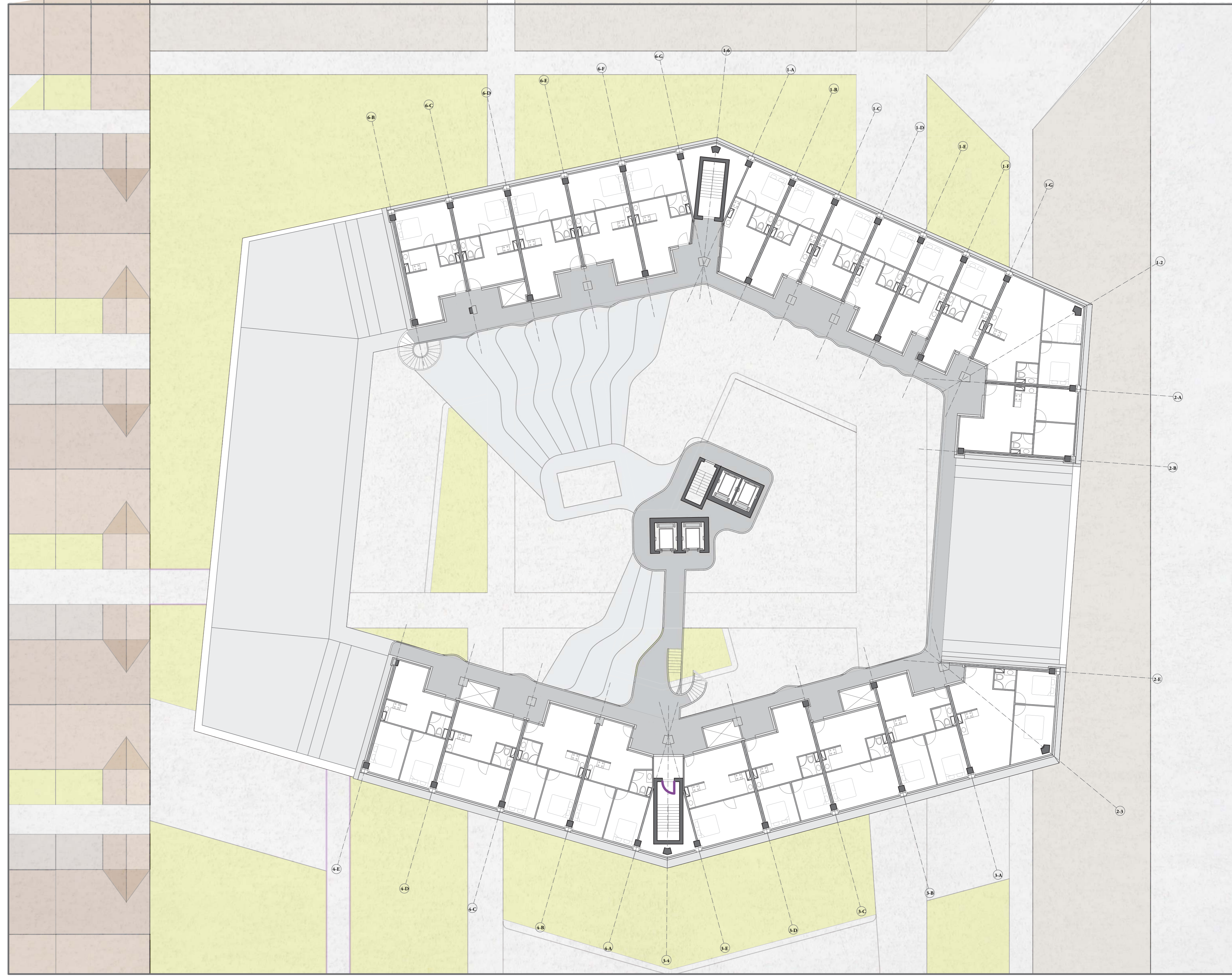
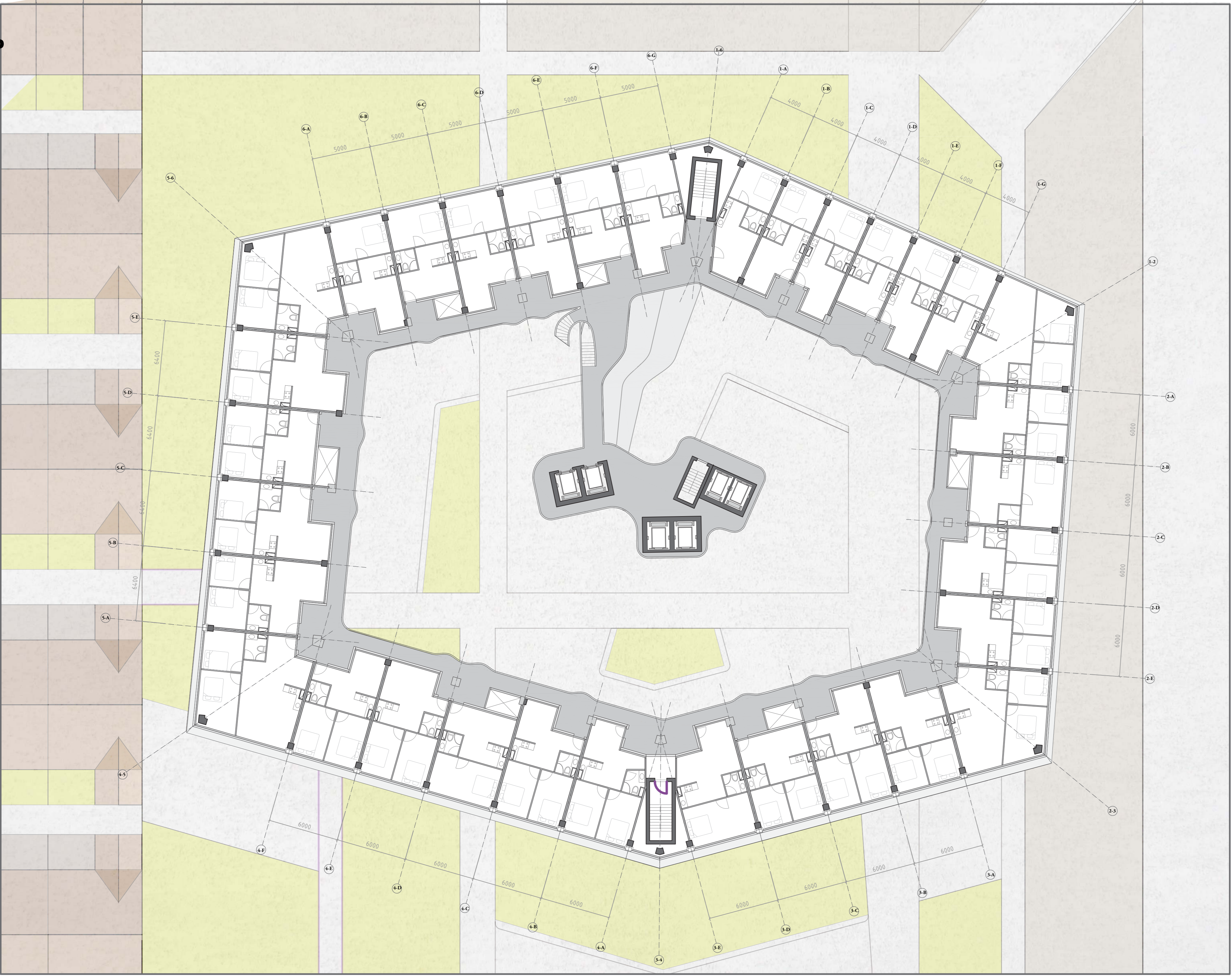


# FLOORPLANS

SCALE 1:200

FLOOR NUMBERS:

3	13
19	24





# South Elevation

SCALE 1:200

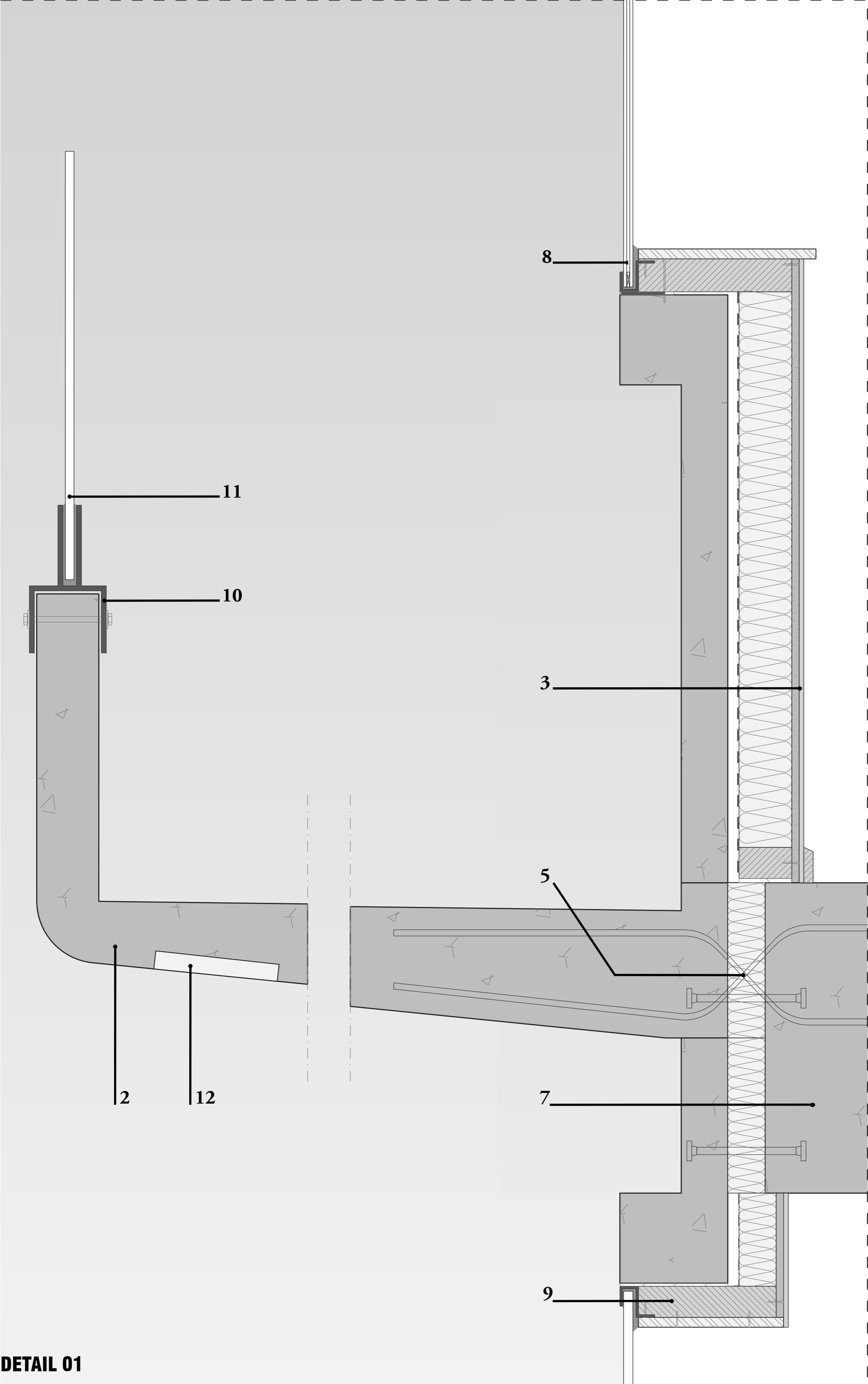
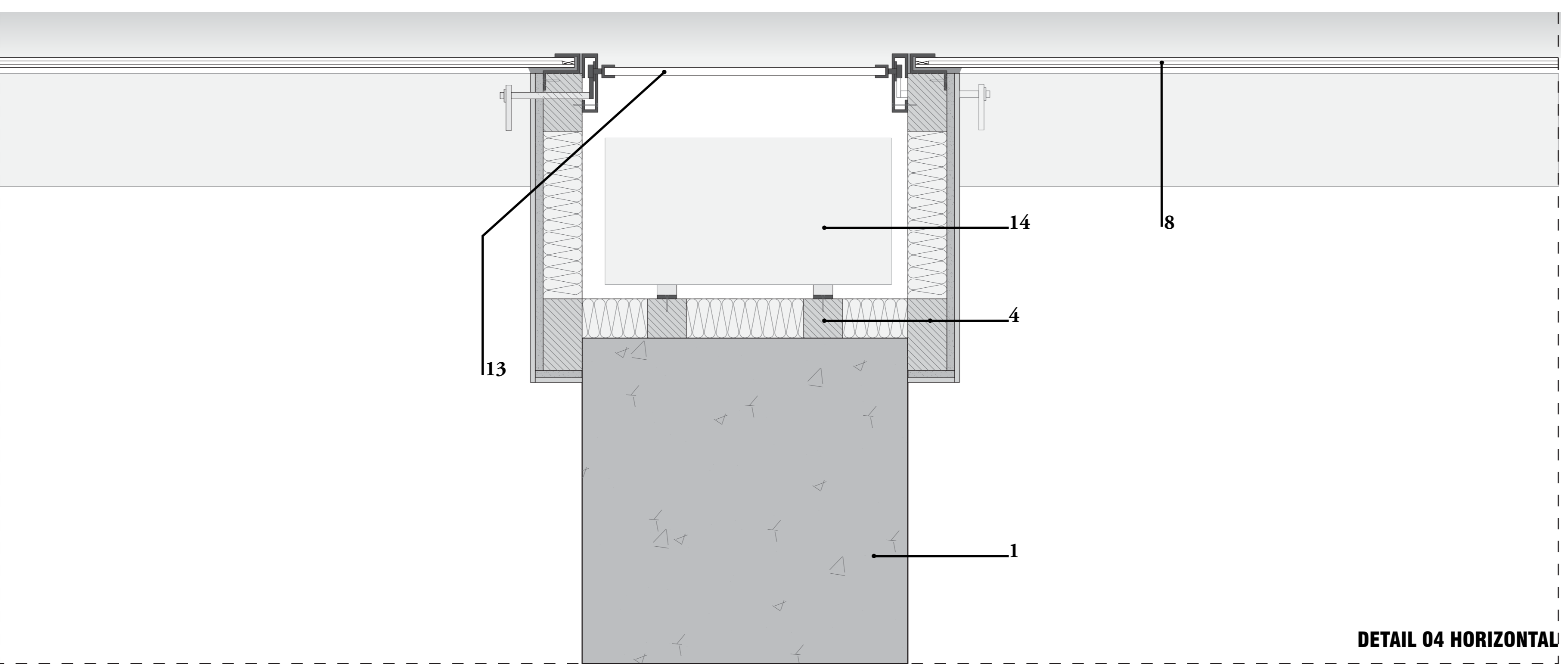
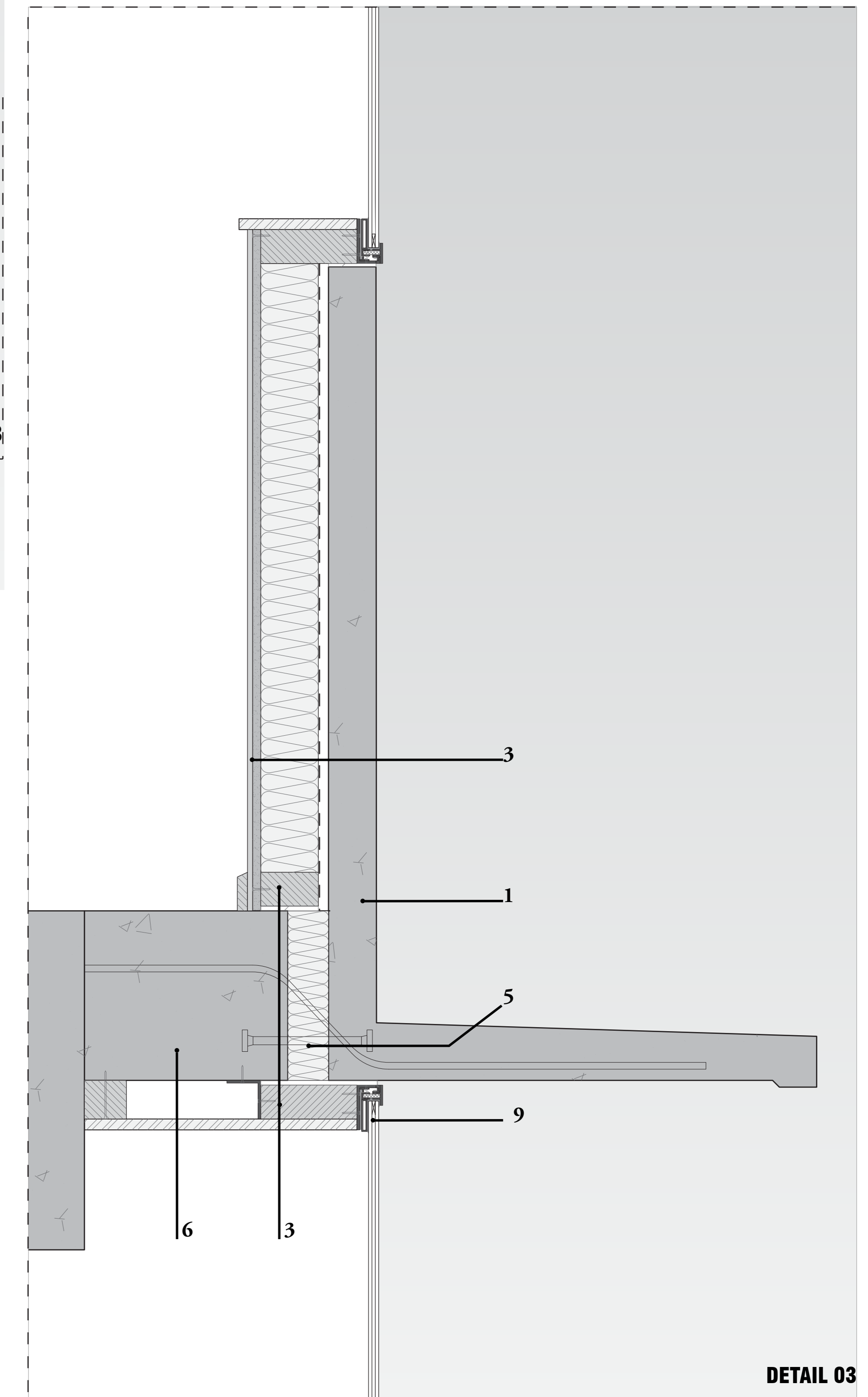
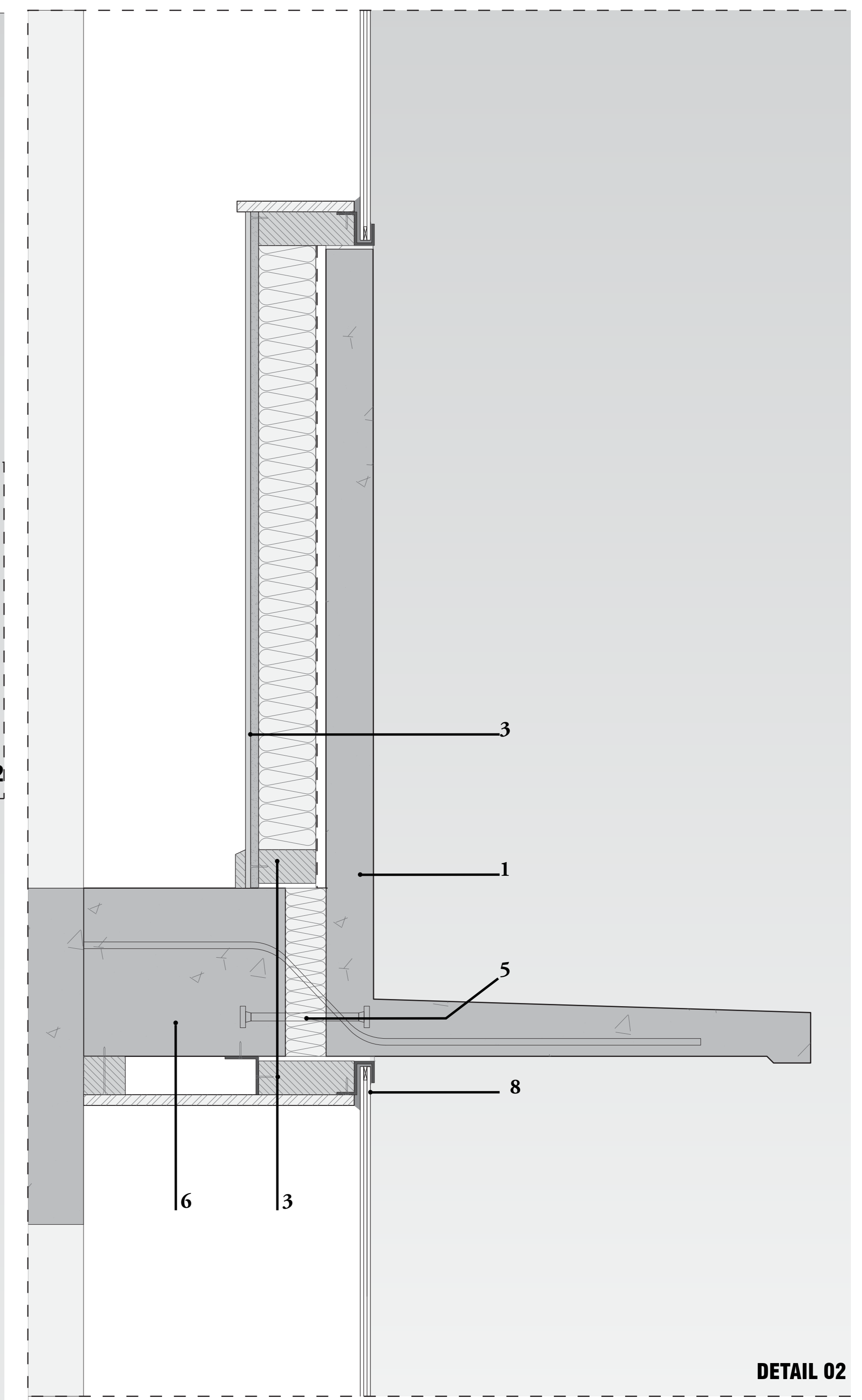
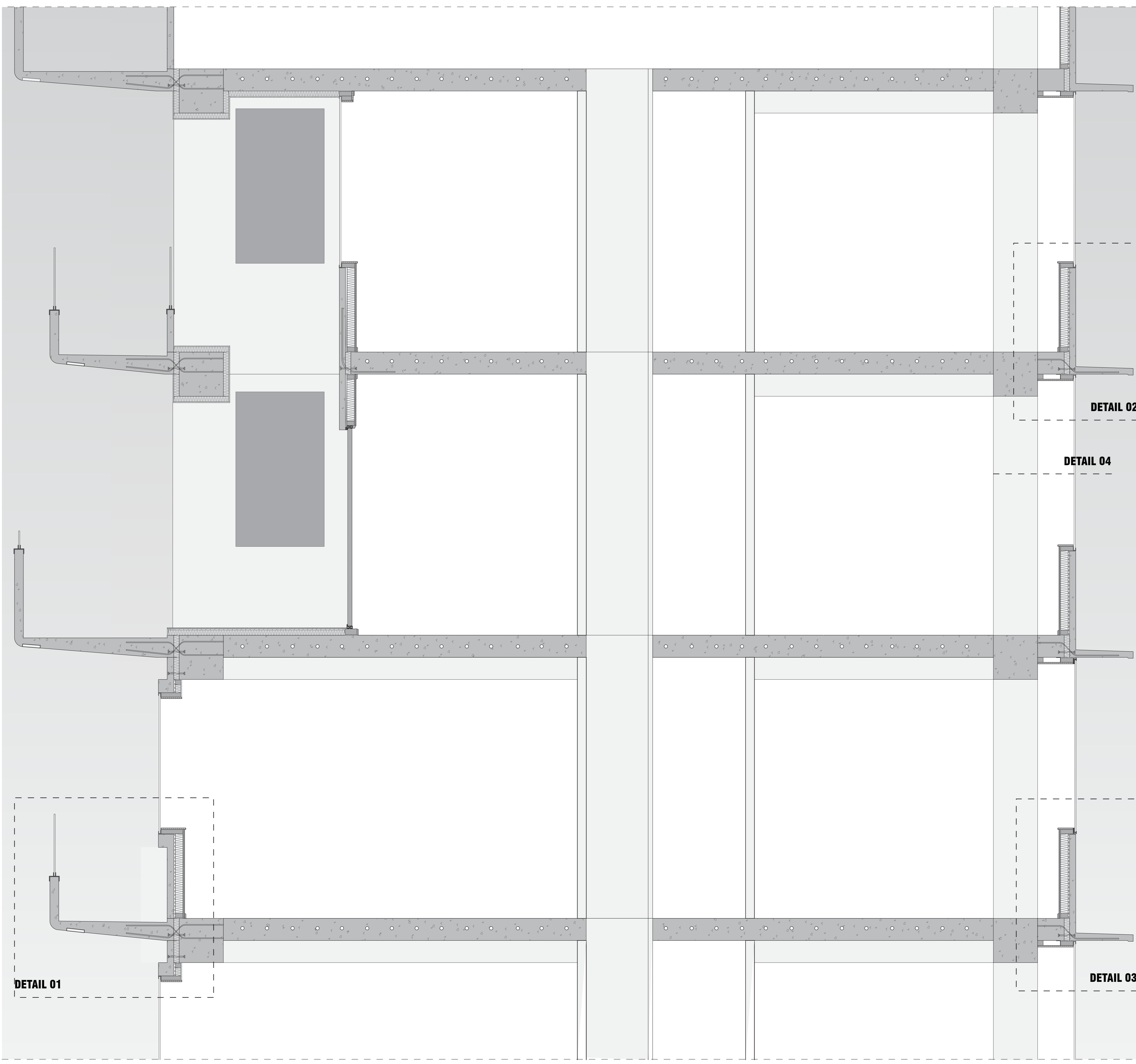




# SECTION & DETAILS

SECTION SCALE 1:20  
 DETAILS SCALE 1:5

1. 70mm prefab concrete facade element, with China clay, engraved
2. Prefab concrete gallery, with China clay
3. Waterproofing membrane  
85mm insulation  
Gypsum Board  
Plaster finish
4. 50mm wood frame, varying width
5. 65mm Isokorf thermal break, with pressure and tension bar
6. 250mm reinforced concrete floor
7. 500x500mm reinforced concrete beam
8. 14mm double glazing  
Window frame steel profile
9. Openable window frame, steel profile
10. Aluminium profile
11. Toughened glass railing
12. LED lighting
13. Glass louvre  
Louvre frame  
Handle
14. Airconditioning unit



DETAIL 01

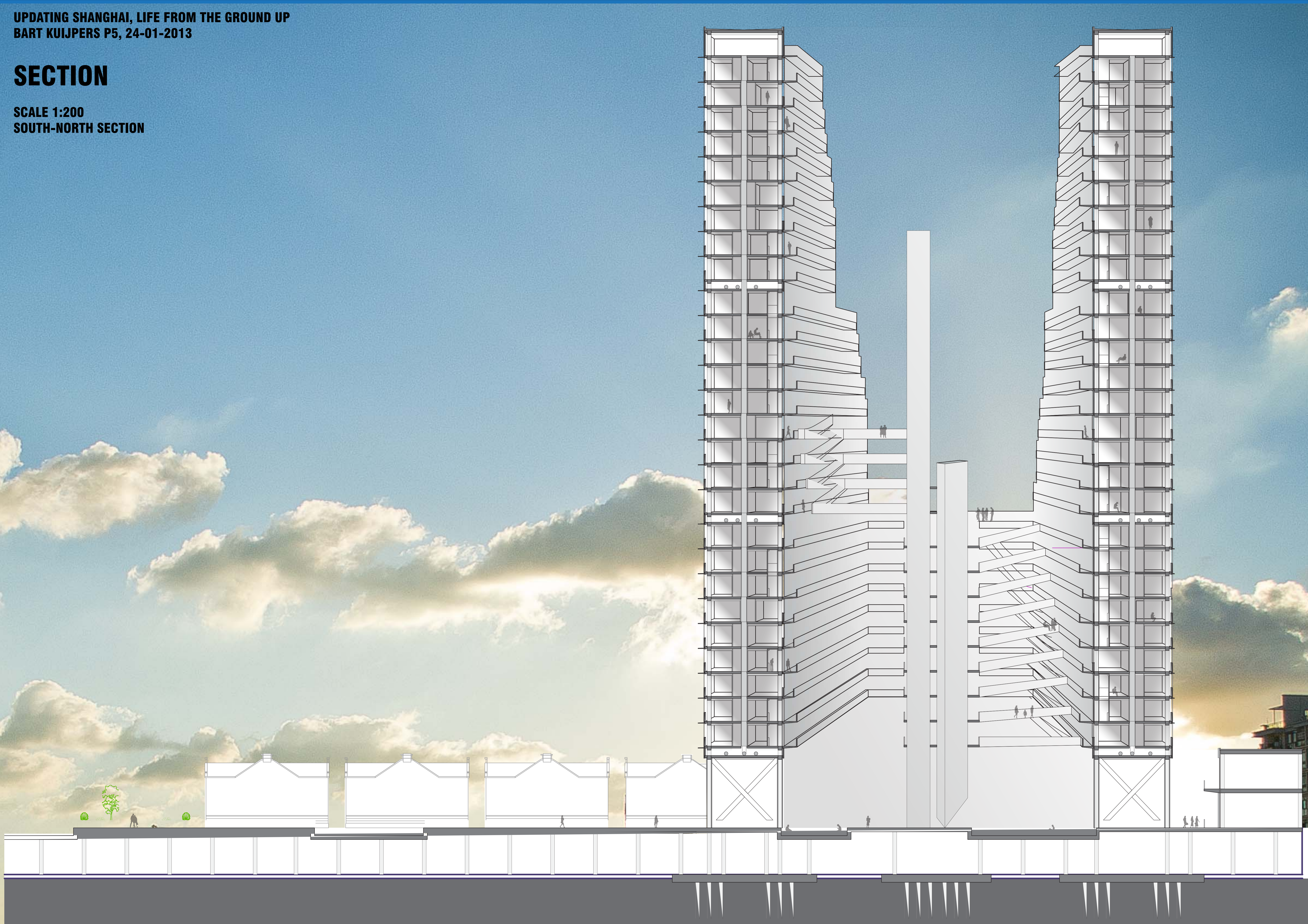
DETAIL 04 HORIZONTAL

DETAIL 03



# SECTION

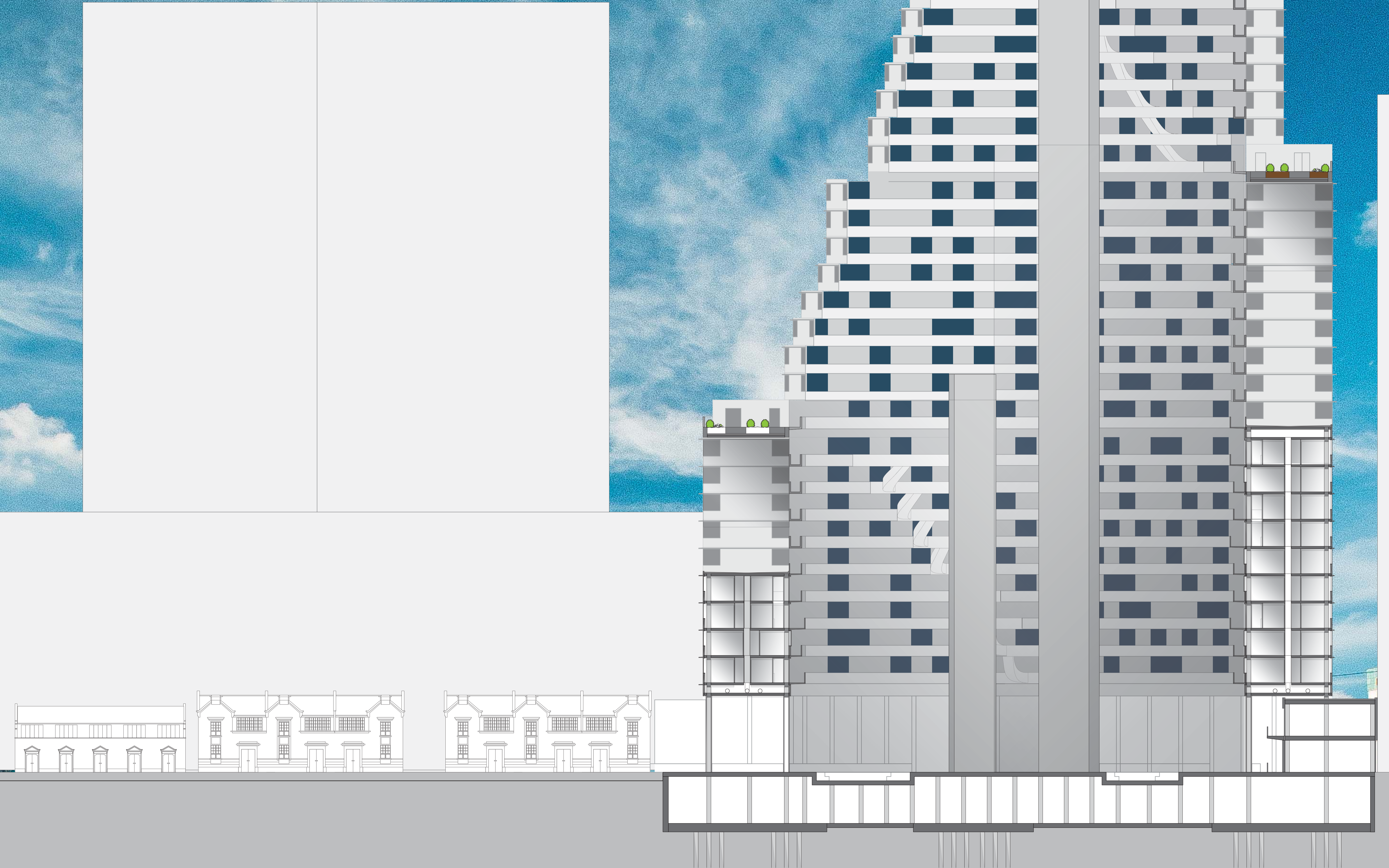
SCALE 1:200  
SOUTH-NORTH SECTION





# South Elevation

SCALE 1:200





# Updating Shanghai, Life from the ground up

Bart Kuijpers 1176420  
P4 03-12-2012  
Masterplan  
Scale 1:1000

