

ELBETITSA

Anton Dobrevski

Student number: 4539265

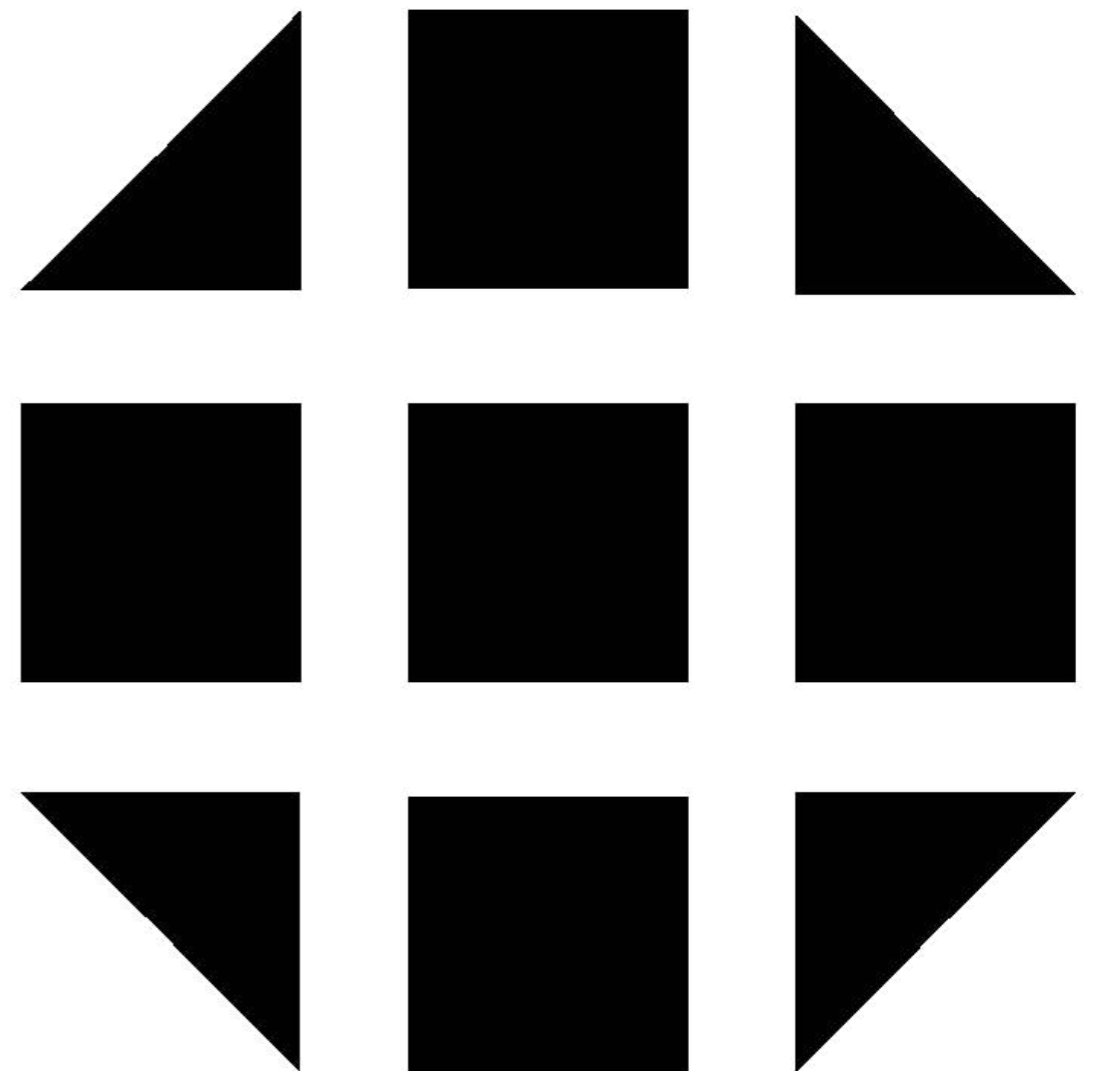
Studio: ExploreLab

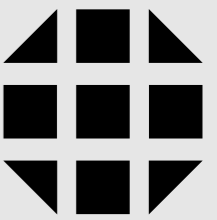
Architecture tutor: Roel van de Pas

Technology tutor: Jan van de Voort

Research tutor: Peter Koorstra

External examiner: Ype Cuperus





ELBETITSA

Project North



Scale

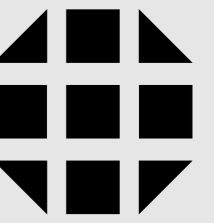
1 : 2000

Site

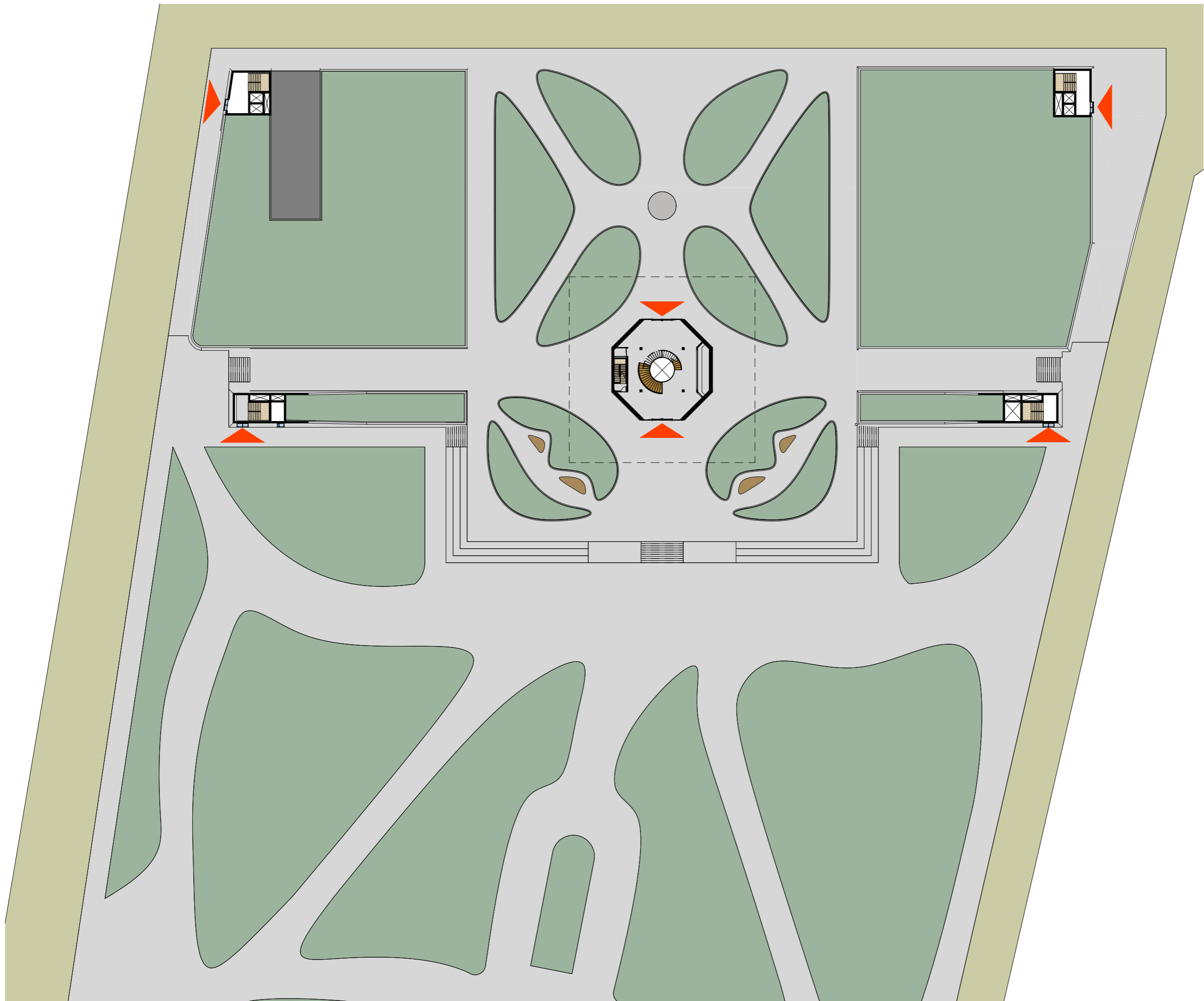
A1.0

Sheet No.

Sheet size: A3



ELBETITSA



Project North

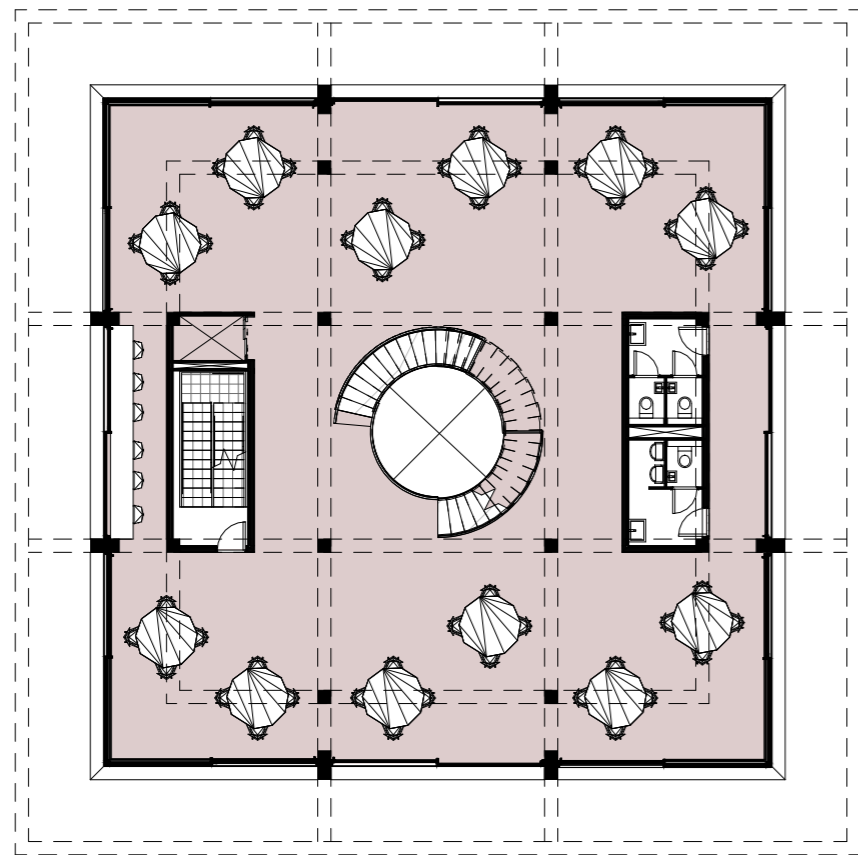
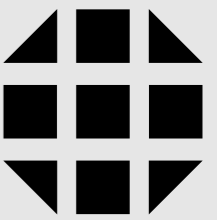


Scale 1 : 500

Floor plan - Ground Level

A1.1

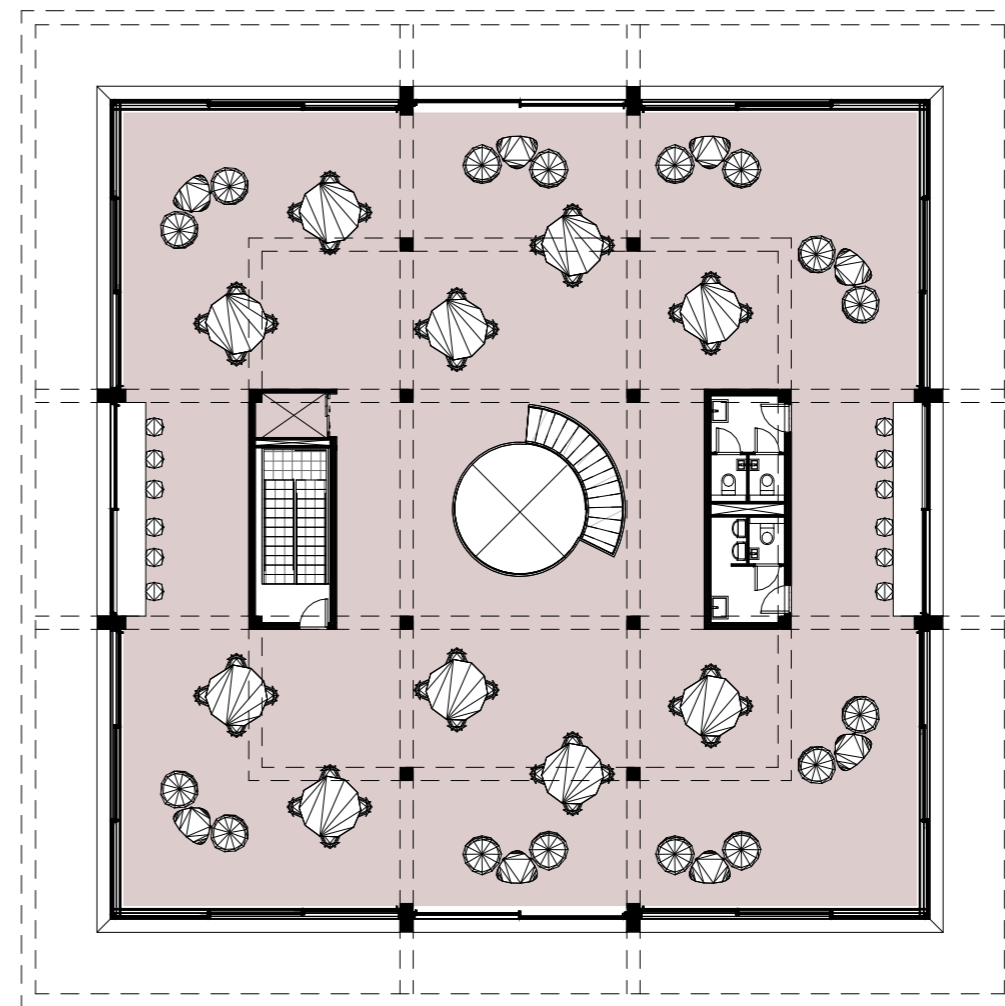
Sheet No. Sheet size: A3



Floor plan - Level 1
1 : 200

Room Legend

■ Cafe



Floor plan - Level 2
1 : 200

Project North



Scale

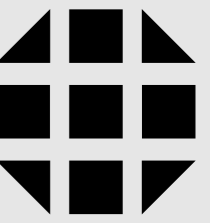
1 : 200

Floor plans - Level 1
and 2

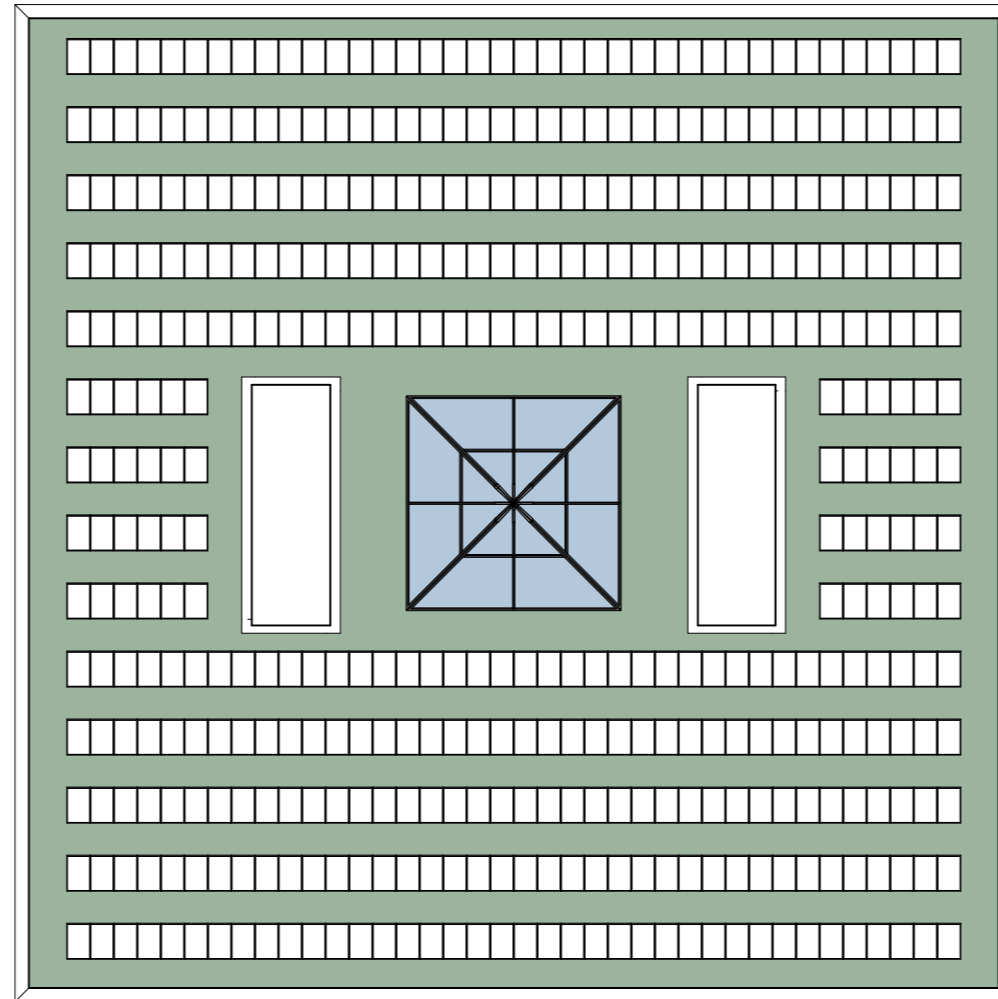
A1.2

Sheet No.

Sheet size: A3



ELBETITSA



Roof plan
1 : 200

Project North



Scale

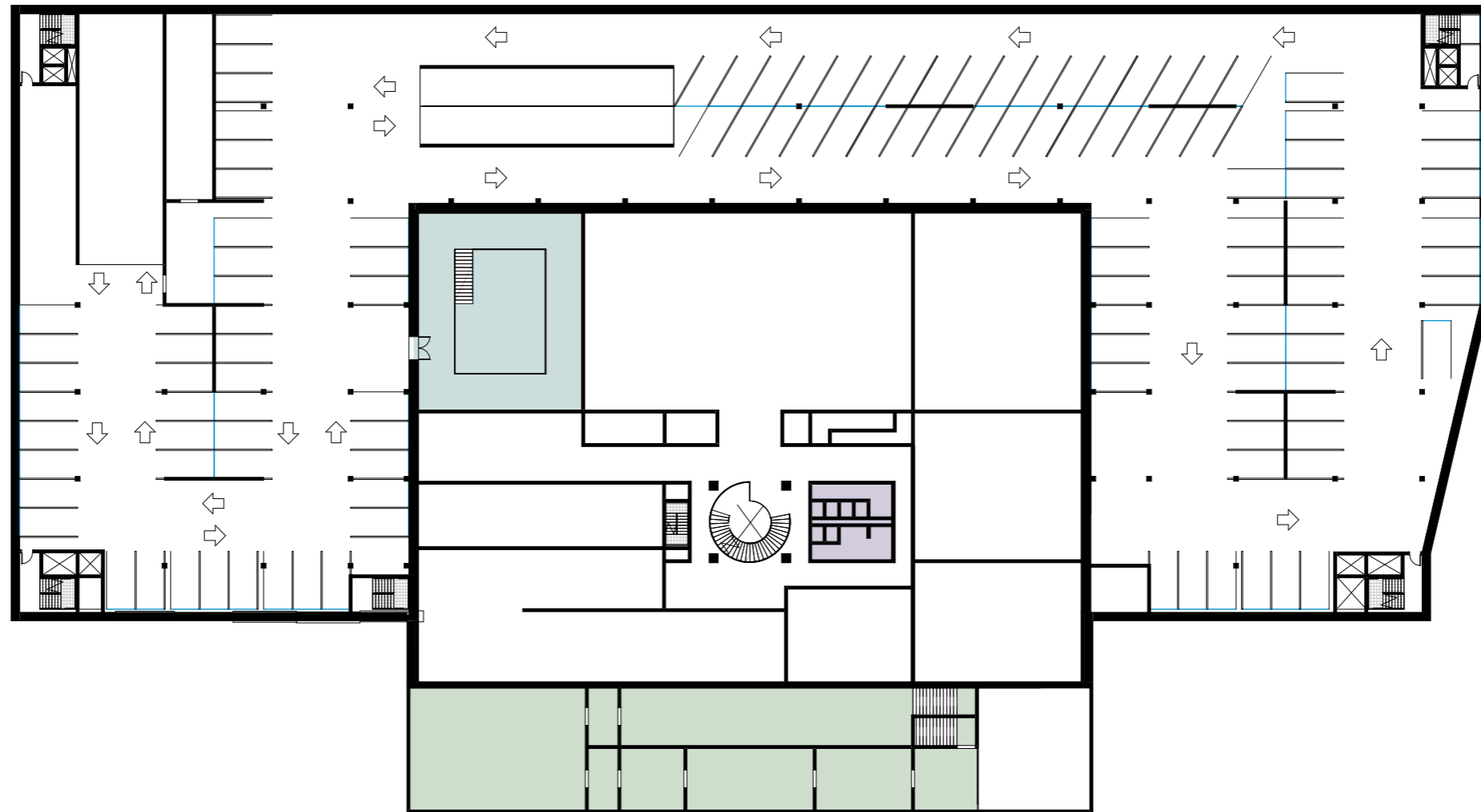
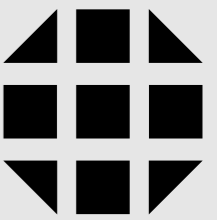
1 : 200

Roof plan

A1.3

Sheet No.

Sheet size: A3



Floor plan - Level -0.5
1 : 500

Room Legend

- Existing mausoleum part
- Offices & Conservation space
- Restrooms

Project North

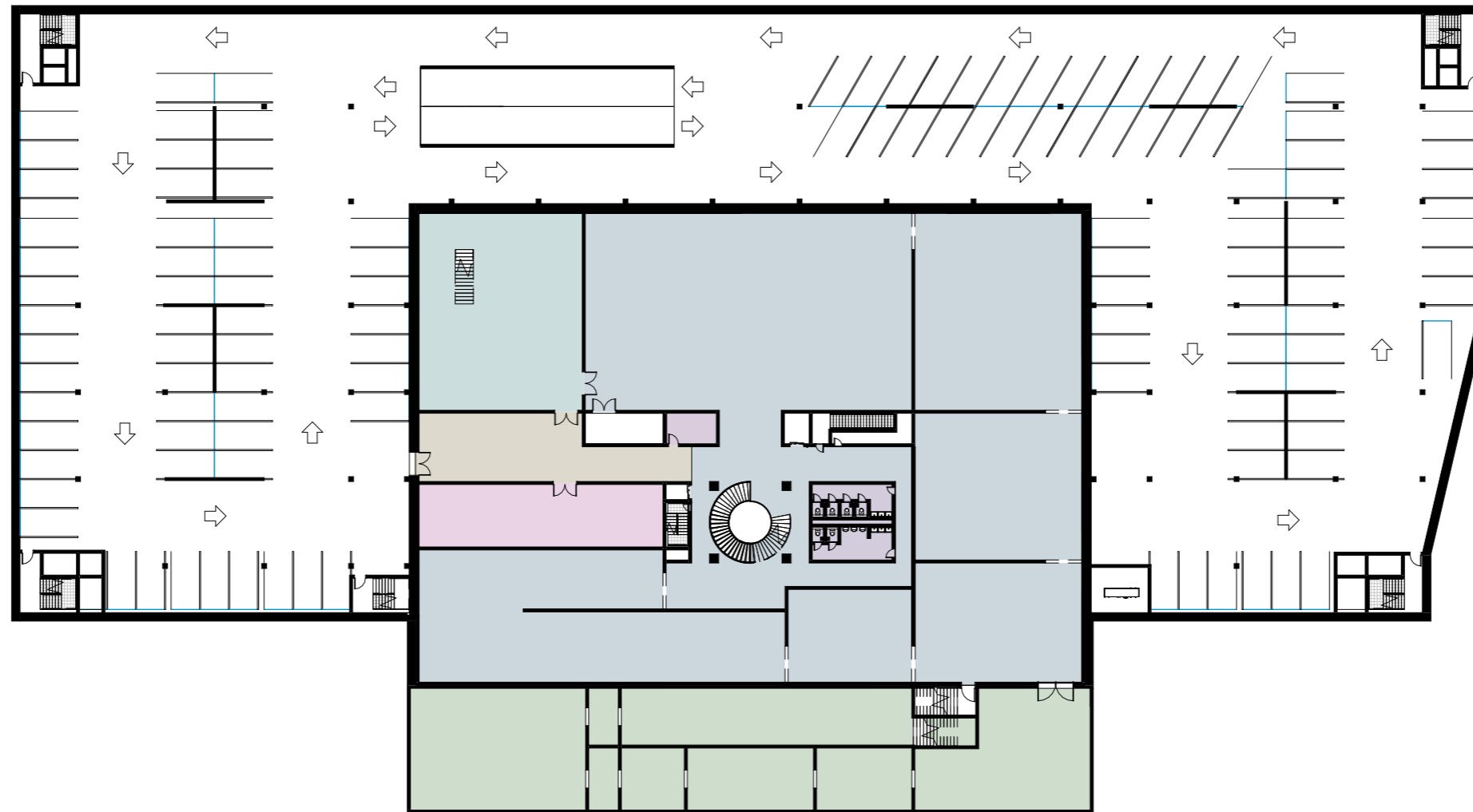
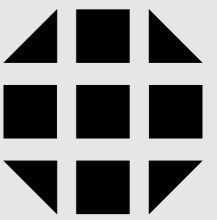


Scale 1 : 500

Floor plan - Level
-0.5








A1.4

Sheet No. Sheet size: A3



Floor plan - Level -1
1 : 500

Room Legend

-  Entrance
-  Existing mausoleum part
-  Offices & Conservation space
-  Permanent exhibition
-  Restrooms
-  Staff
-  Storage

Project North



Scale

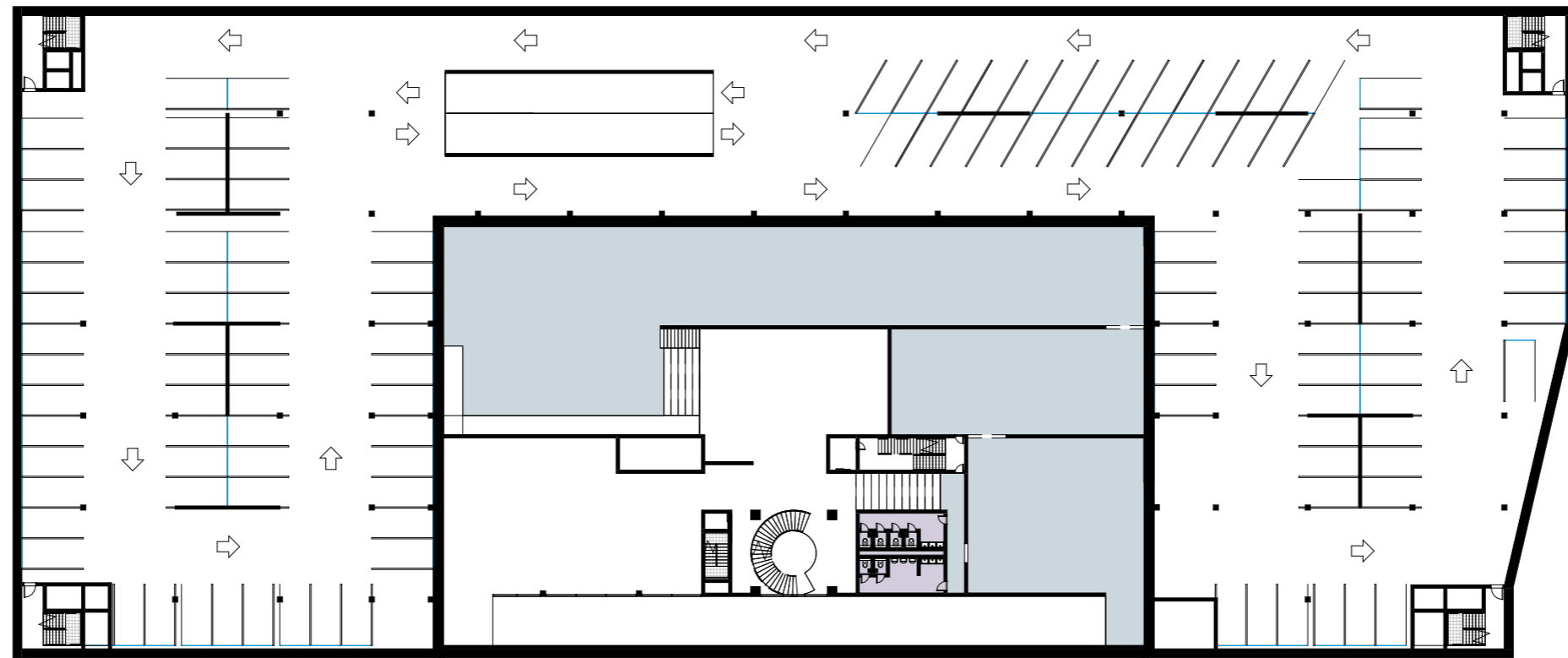
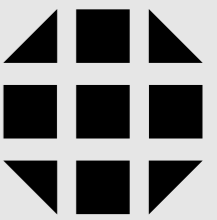
1 : 500

Floor plan - Level -1

A1.5

Sheet No.

Sheet size: A3



Floor plan - Level - 1.5
1 : 500

Room Legend

- Permanent exhibition
- Restrooms

Project North

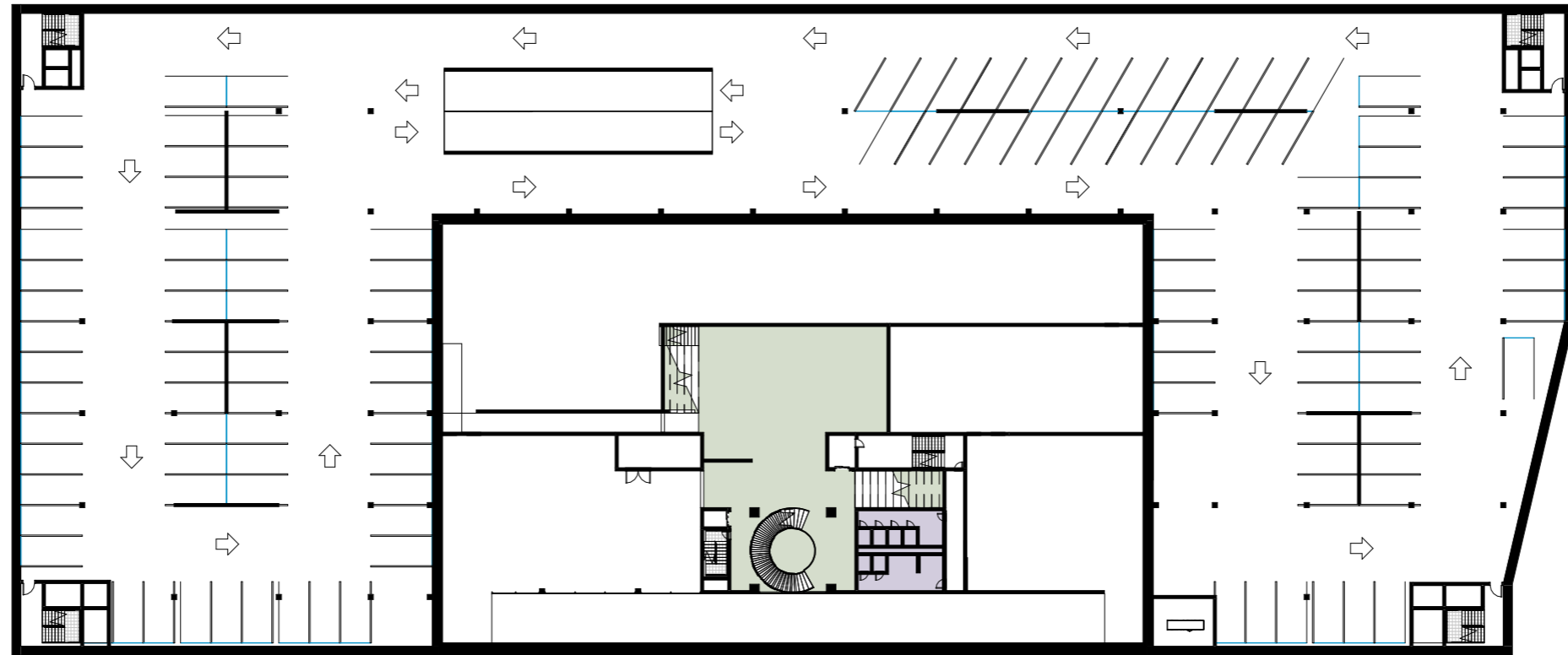
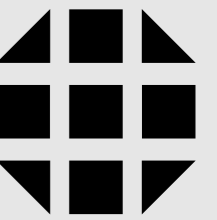


Scale 1 : 500

Floor plan - Level
-1.5

A1.6

Sheet No. Sheet size: A3



Floor plan - Level -2
1 : 500

Room Legend

- Event space
- Restrooms

Project North

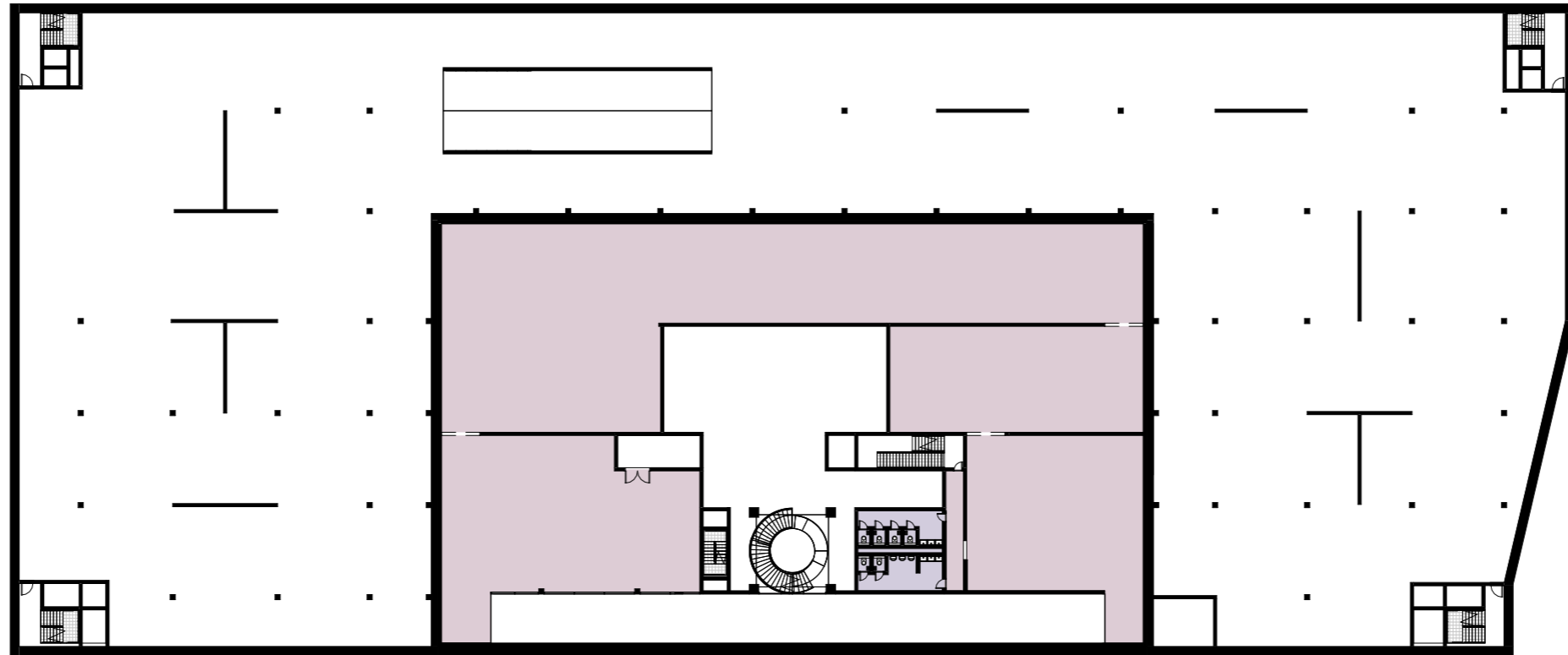
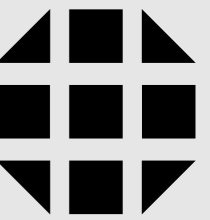


Scale 1 : 500

Floor plan - Level -2

A1.7

Sheet No. Sheet size: A3



Floor plan - Level - 2.5
1 : 500

Room Legend

- Restrooms
- Temporary exhibition

Project North



Scale

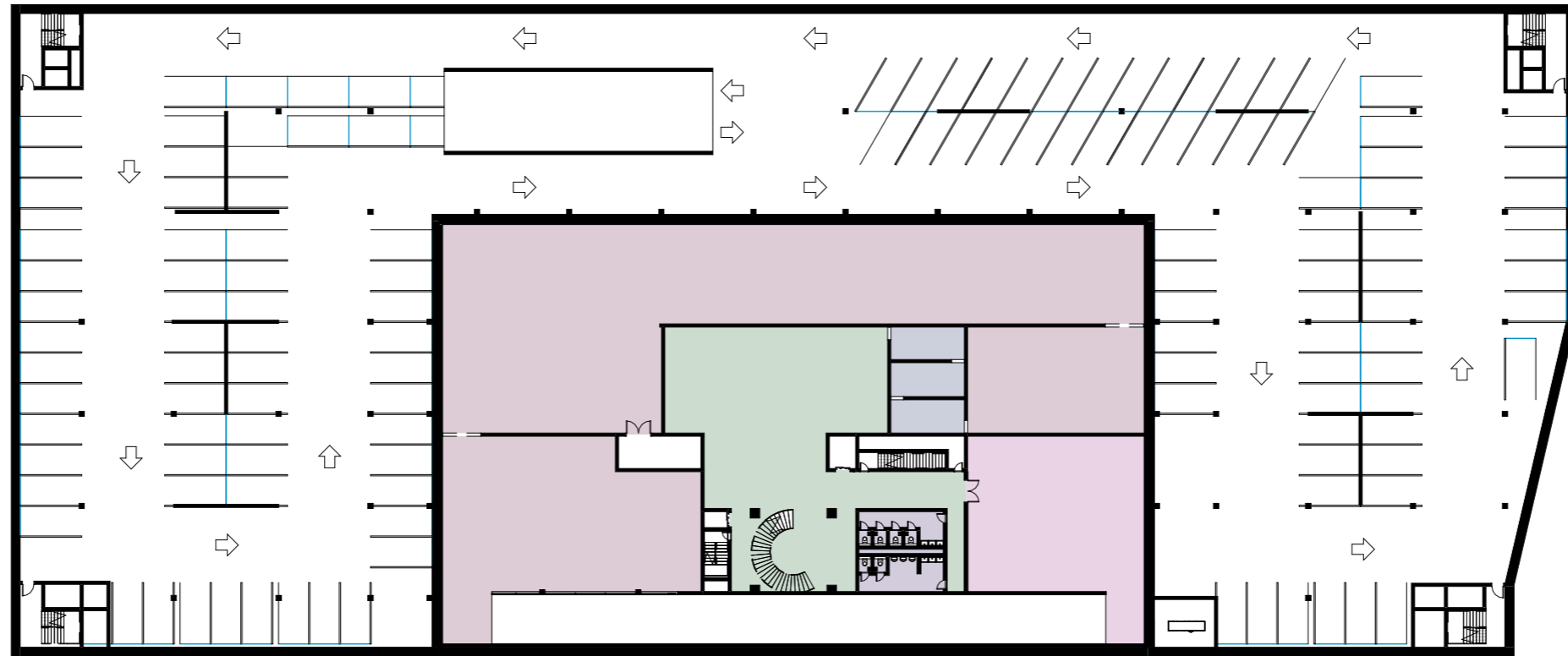
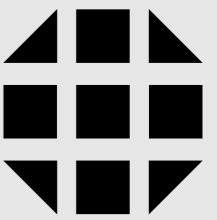
1 : 500

Floor plan - Level
-2.5

A1.8

Sheet No.

Sheet size: A3



Floor plan - Level -3
1 : 500

Room Legend

- Gathering space
- Reflection room
- Restrooms
- Storage
- Temporary exhibition

Project North

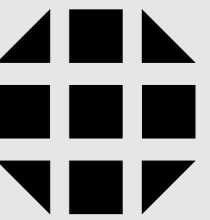


Scale 1 : 500

Floor plan -3

A1.9

Sheet No. Sheet size: A3



ELBETITSA



Facade East
1 : 200



Facade West
1 : 200

Project North

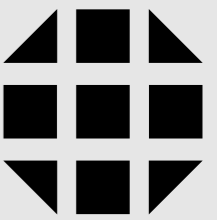


Scale 1 : 200

Elevations East and West

A2.1

Sheet No. Sheet size: A3



PR_Facade North
1 : 200



PR_Facade South
1 : 200

Project North

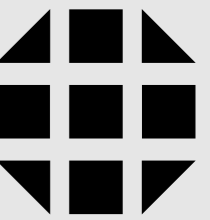


Scale 1 : 200

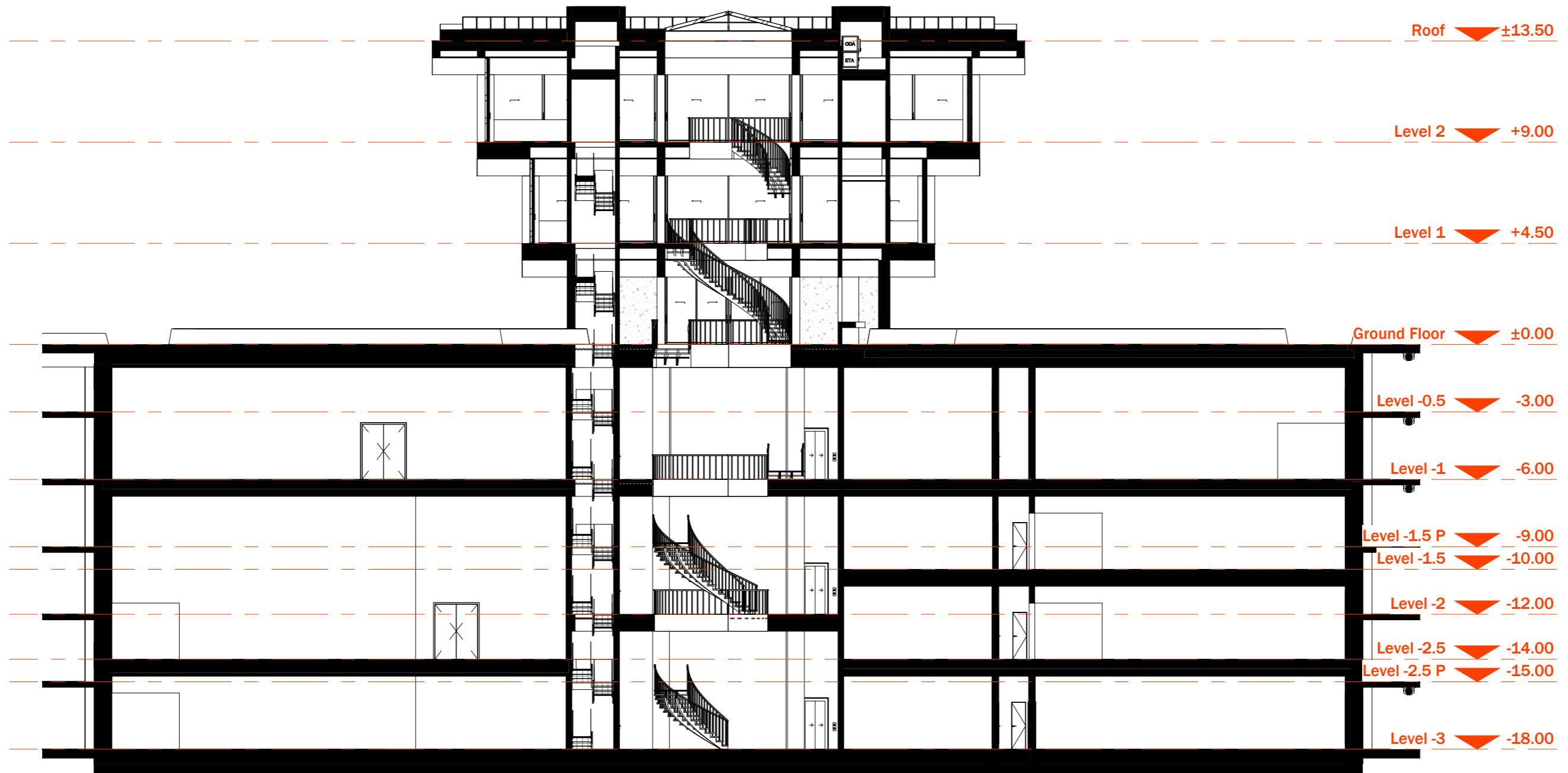
Elevations North and South

A2.2

Sheet No. Sheet size: A3



ELBETITSA



Project North



Scale

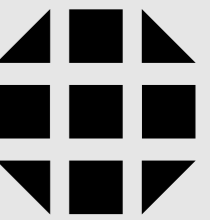
1:200

Section AA

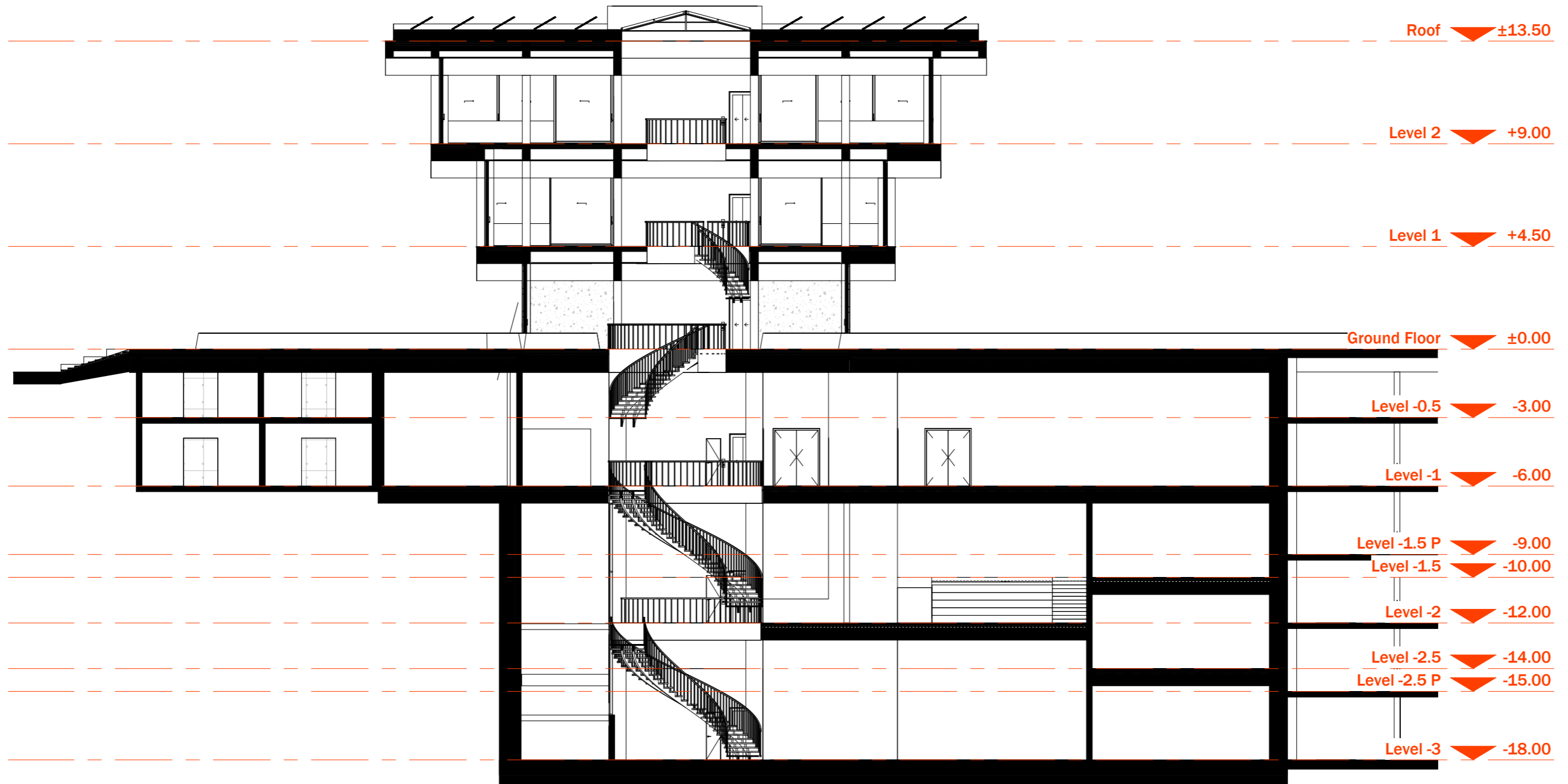
A3.1

Sheet No.

Sheet size: A3



ELBETITSA



Project North



Scale

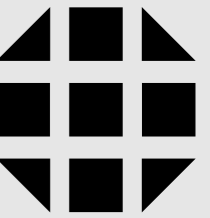
1:200

Section BB

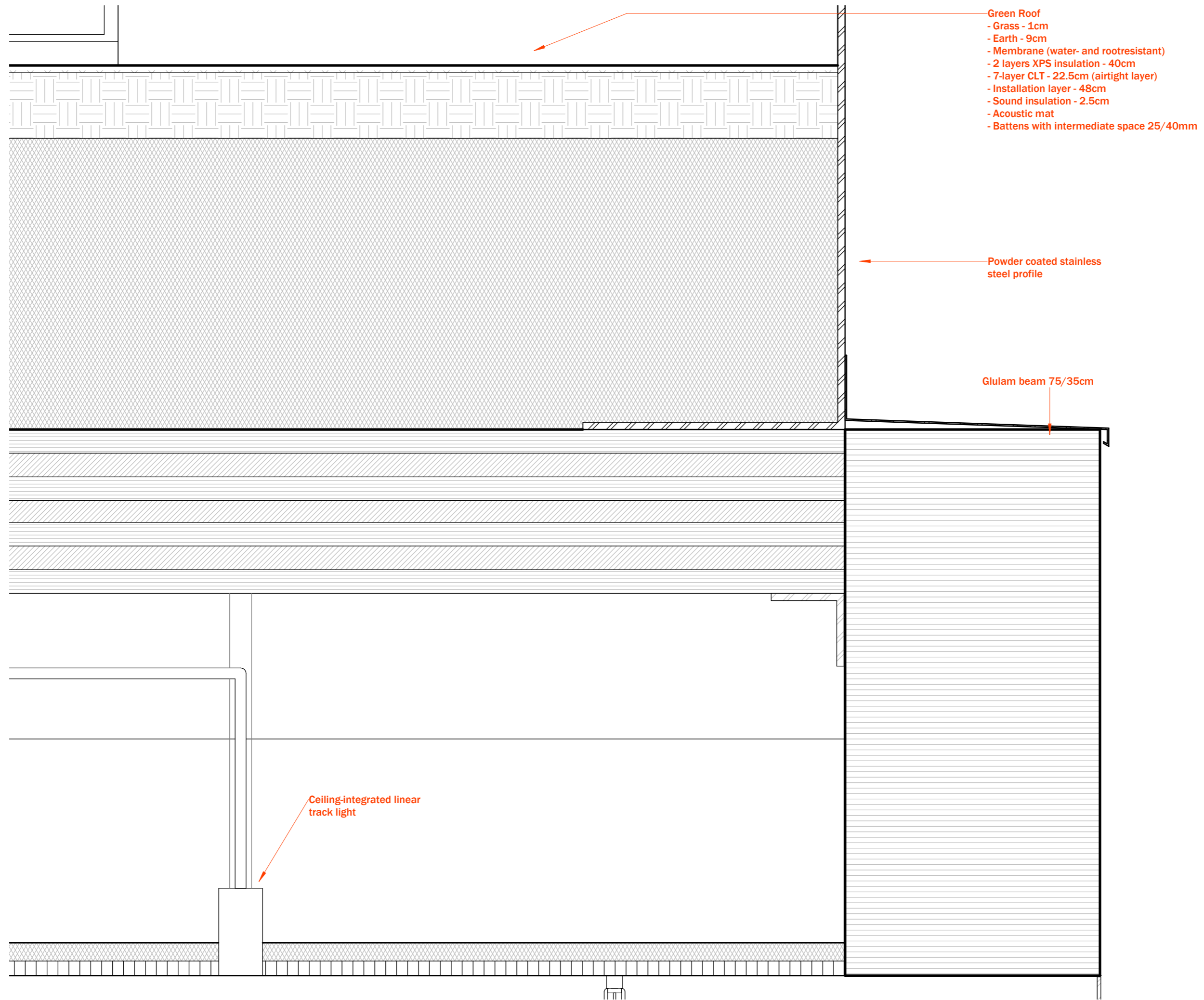
A3.2

Sheet No.

Sheet size: A3



ELBETITSA



Project North



Scale

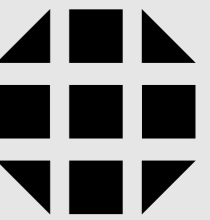
1:5

Roof edge

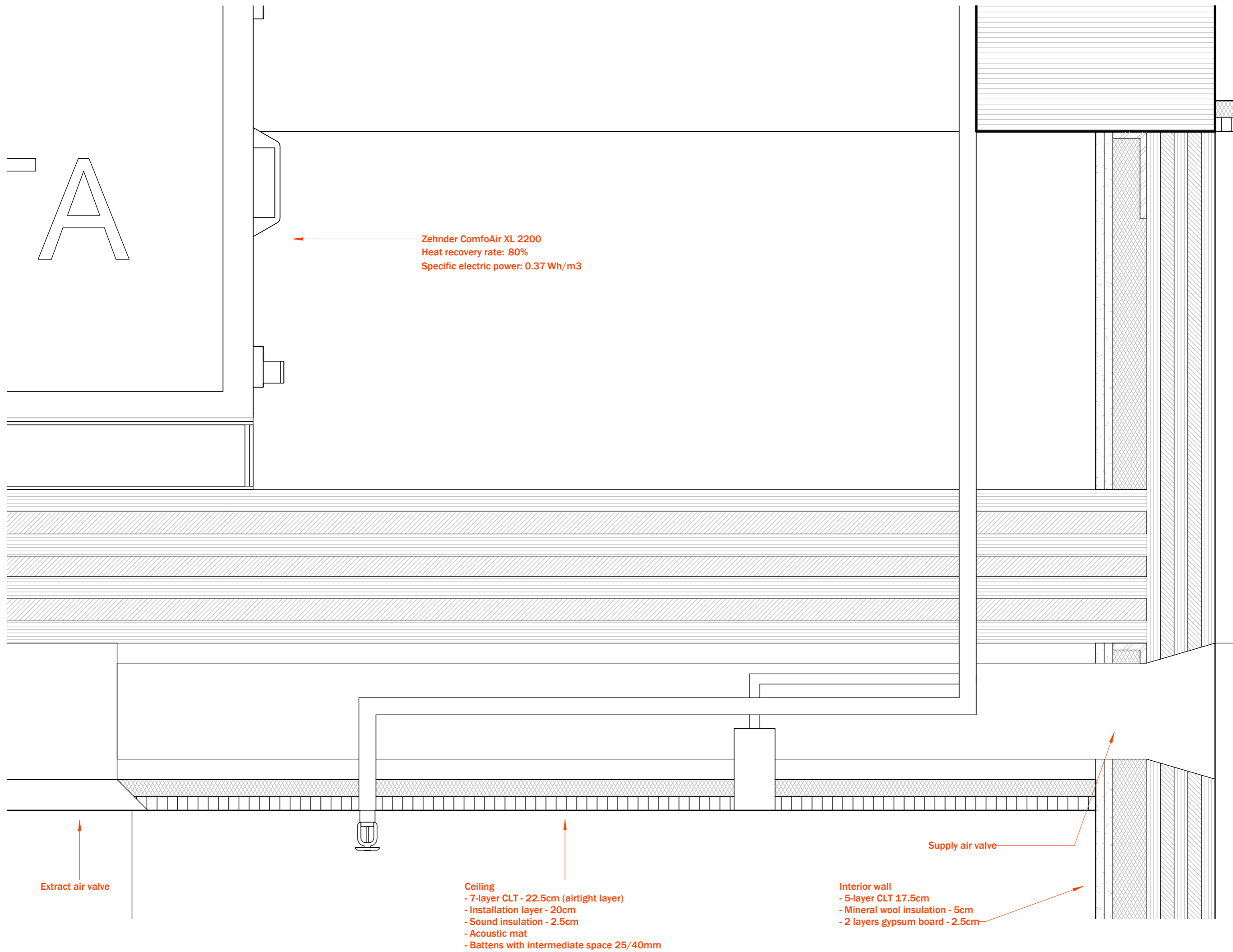
A4.01

Sheet No.

Sheet size: A3



ELBETITSA



Project North

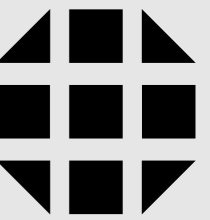


Scale 1:5

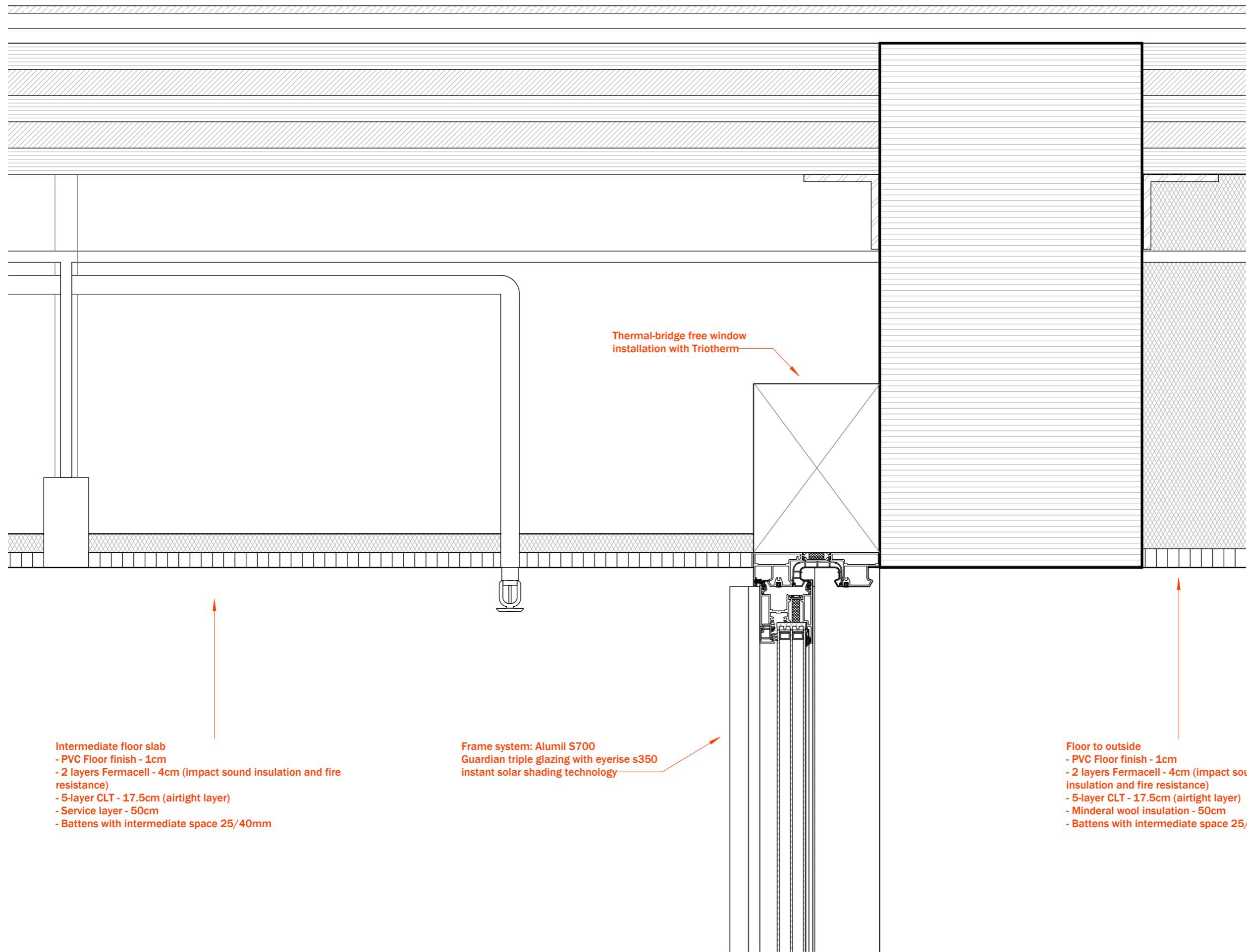
Restroom ceiling detail

A4.02

Sheet No. Sheet size: A3



ELBETITSA



Thermal-bridge free window installation with Triotherm

- Intermediate floor slab
- PVC Floor finish - 1cm
- 2 layers Fermacell - 4cm (impact sound insulation and fire resistance)
- 5-layer CLT - 17.5cm (airtight layer)
- Service layer - 50cm
- Battens with intermediate space 25/40mm

- Frame system: Alumil S700
- Guardian triple glazing with eyerise s350 instant solar shading technology

- Floor to outside
- PVC Floor finish - 1cm
- 2 layers Fermacell - 4cm (impact sound insulation and fire resistance)
- 5-layer CLT - 17.5cm (airtight layer)
- Mineral wool insulation - 50cm
- Battens with intermediate space 25/40mm

Project North

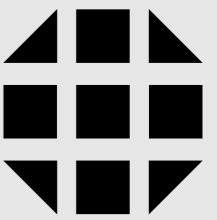


Scale 1:5

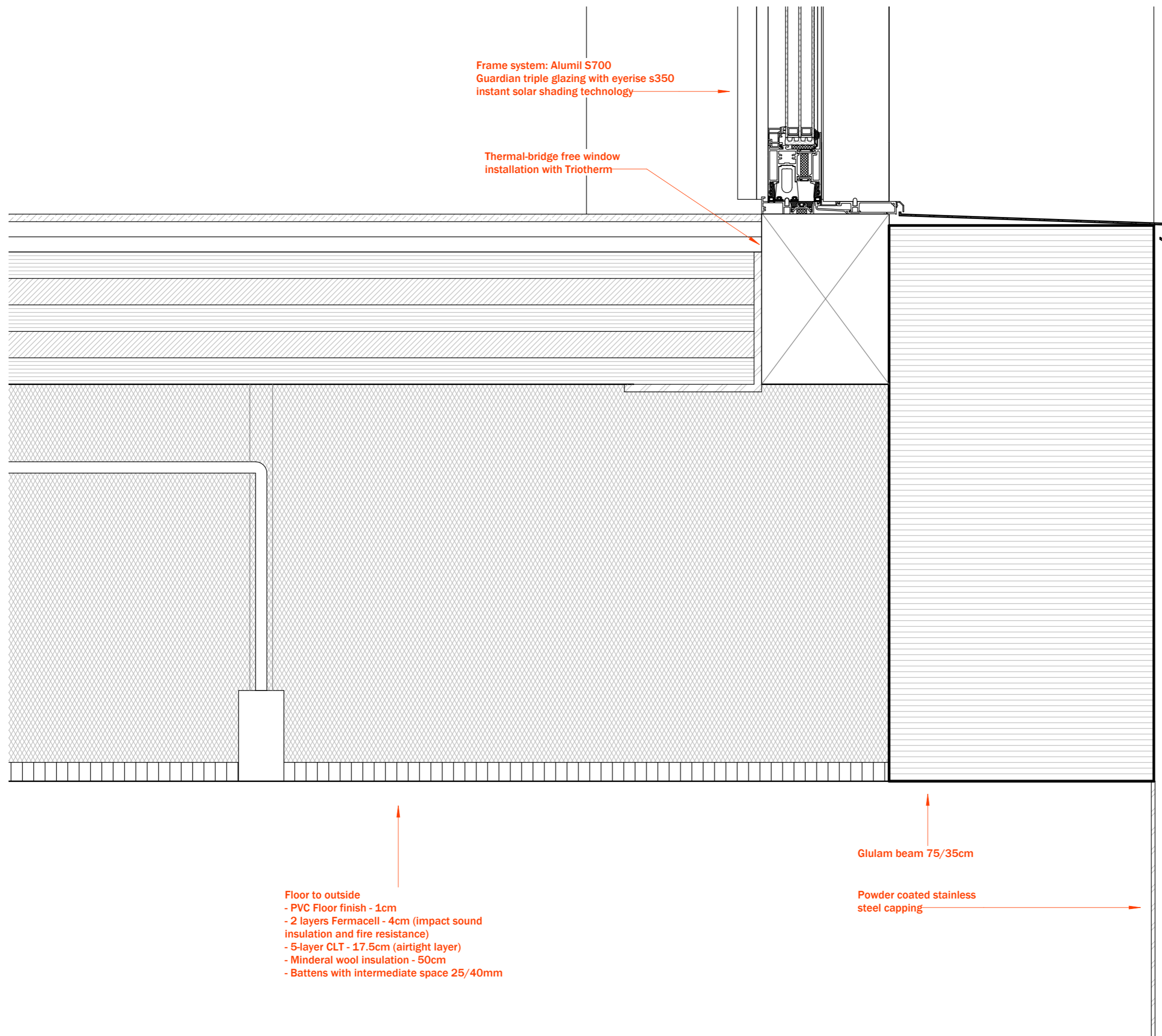
Window installation - top

A4.03

Sheet No. Sheet size: A3



ELBETITSA



Project North

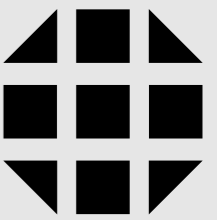


Scale 1:5

Window installation
- bottom

A4.04

Sheet No. Sheet size: A3



ELBETITSA

window sill

Glass railing - integrated in the sliding frame system

Frame system: Alumil S700
Guardian triple glazing with eyerise s350 instant solar shading technology

High-density insulation material

Steel profile glued to the frame

Glulam column 35x75cm

Project North



Scale

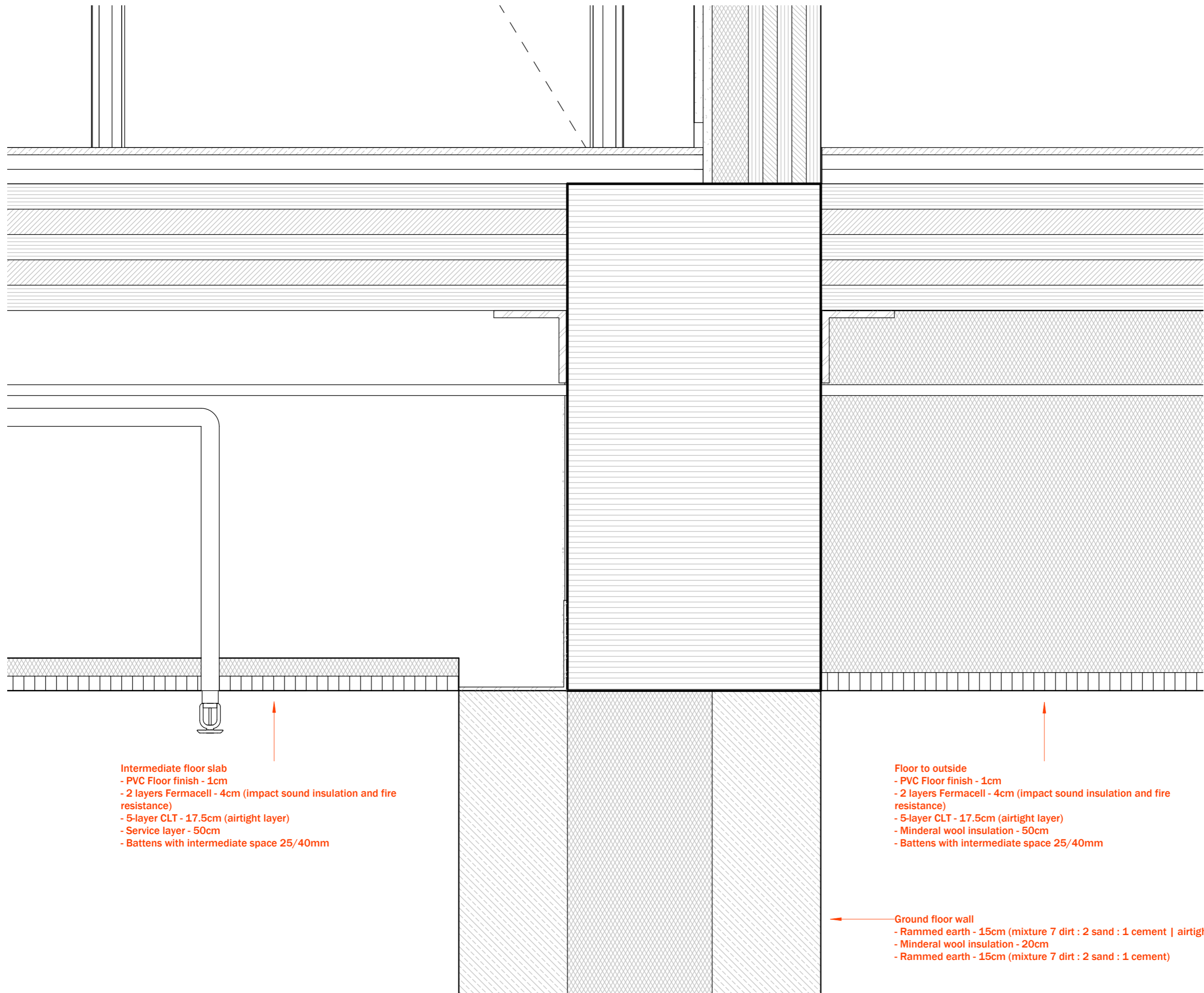
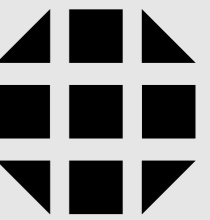
1:5

Horizontal window detail

A4.05

Sheet No.

Sheet size: A3



- Intermediate floor slab
- PVC Floor finish - 1cm
 - 2 layers Fermacell - 4cm (impact sound insulation and fire resistance)
 - 5-layer CLT - 17.5cm (airtight layer)
 - Service layer - 50cm
 - Battens with intermediate space 25/40mm

- Floor to outside
- PVC Floor finish - 1cm
 - 2 layers Fermacell - 4cm (impact sound insulation and fire resistance)
 - 5-layer CLT - 17.5cm (airtight layer)
 - Mineral wool insulation - 50cm
 - Battens with intermediate space 25/40mm

- Ground floor wall
- Rammed earth - 15cm (mixture 7 dirt : 2 sand : 1 cement | airtight layer)
 - Mineral wool insulation - 20cm
 - Rammed earth - 15cm (mixture 7 dirt : 2 sand : 1 cement)

Project North



Scale

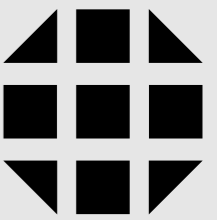
1 : 5

Ground floor -
wall-floor
connection

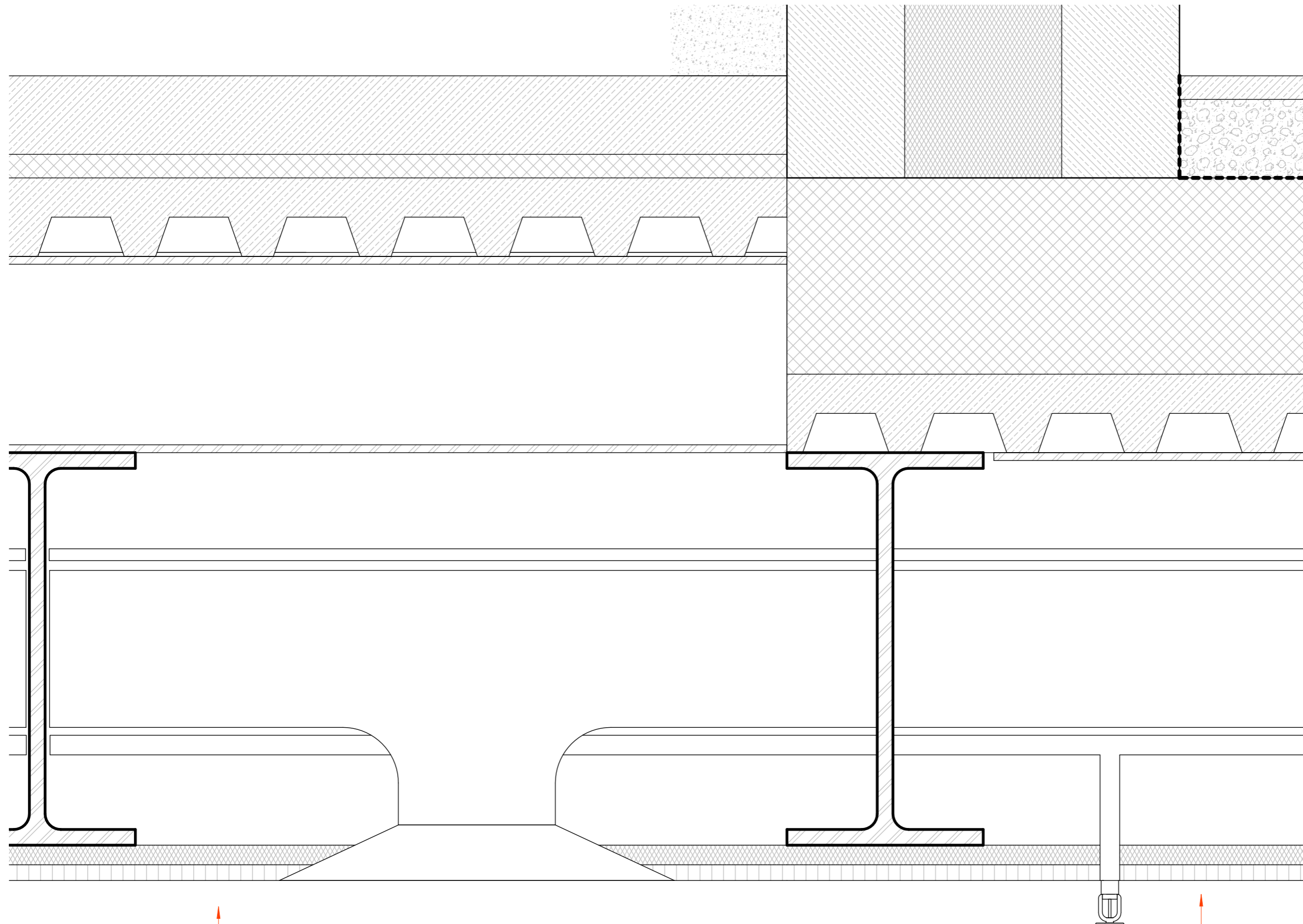
A4.06

Sheet No.

Sheet size: A3



ELBETITSA



- Ground floor slab (inside)
- Screed - 10cm
- Impact sound insulation - 3cm
- Steel profile sheeting with concrete - 15cm
- IPE Steel beams - 25cm (secondary structure)
- Installation layer with IPE Steel beams - 50cm (primary structure)
- Sound insulation - 2.5cm
- Acoustic mat
- Battens with intermediate space 25/40mm

- Ground floor slab
- Pavement - 3cm
- Gravel - 10cm
- Membrane (water- and rootresistant)
- 3 layers XPS insulation - 25cm
- Steel profile sheeting with concrete - 15cm (airtight layer)
- Installation layer - 50cm
- IPE Steel beams - 50cm (primary structure)
- IPE Steel beams - 25cm (secondary structure)
- Sound insulation - 2.5cm
- Acoustic mat
- Battens with intermediate space 25/40mm

Project North



Scale

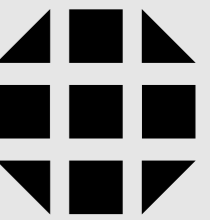
1:5

Ground floor -
interior to exterior
connection

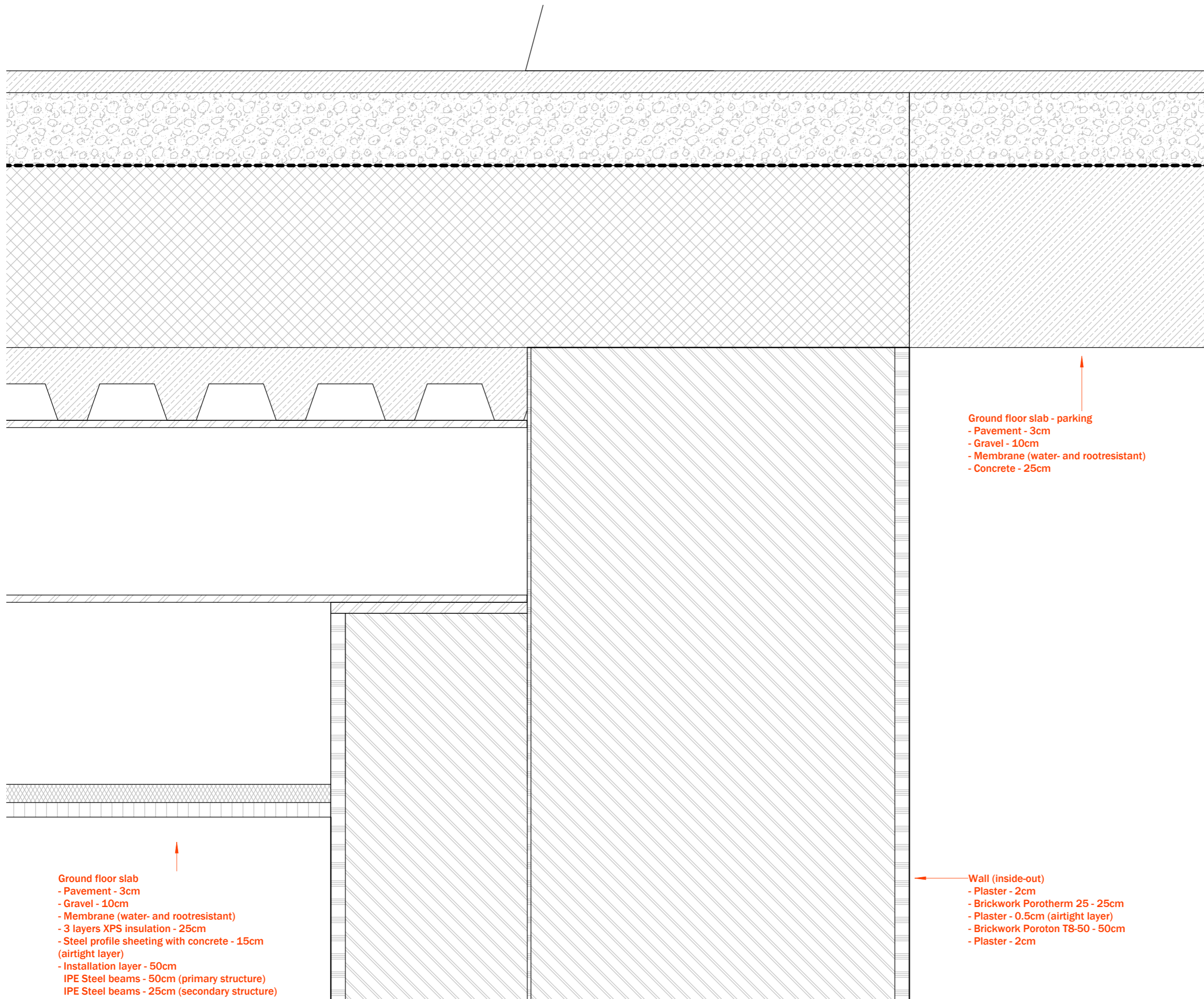
A4.07

Sheet No.

Sheet size: A3



ELBETITSA



Ground floor slab - parking
- Pavement - 3cm
- Gravel - 10cm
- Membrane (water- and rootresistant)
- Concrete - 25cm

Ground floor slab
- Pavement - 3cm
- Gravel - 10cm
- Membrane (water- and rootresistant)
- 3 layers XPS insulation - 25cm
- Steel profile sheeting with concrete - 15cm (airtight layer)
- Installation layer - 50cm
IPE Steel beams - 50cm (primary structure)
IPE Steel beams - 25cm (secondary structure)
- Sound insulation - 2.5cm
- Acoustic mat
- Battens with intermediate space 25/40mm

Wall (inside-out)
- Plaster - 2cm
- Brickwork Porotherm 25 - 25cm
- Plaster - 0.5cm (airtight layer)
- Brickwork Poroton T8-50 - 50cm
- Plaster - 2cm

Project North

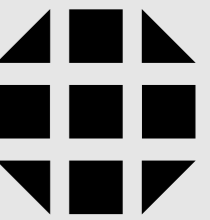


Scale 1:5

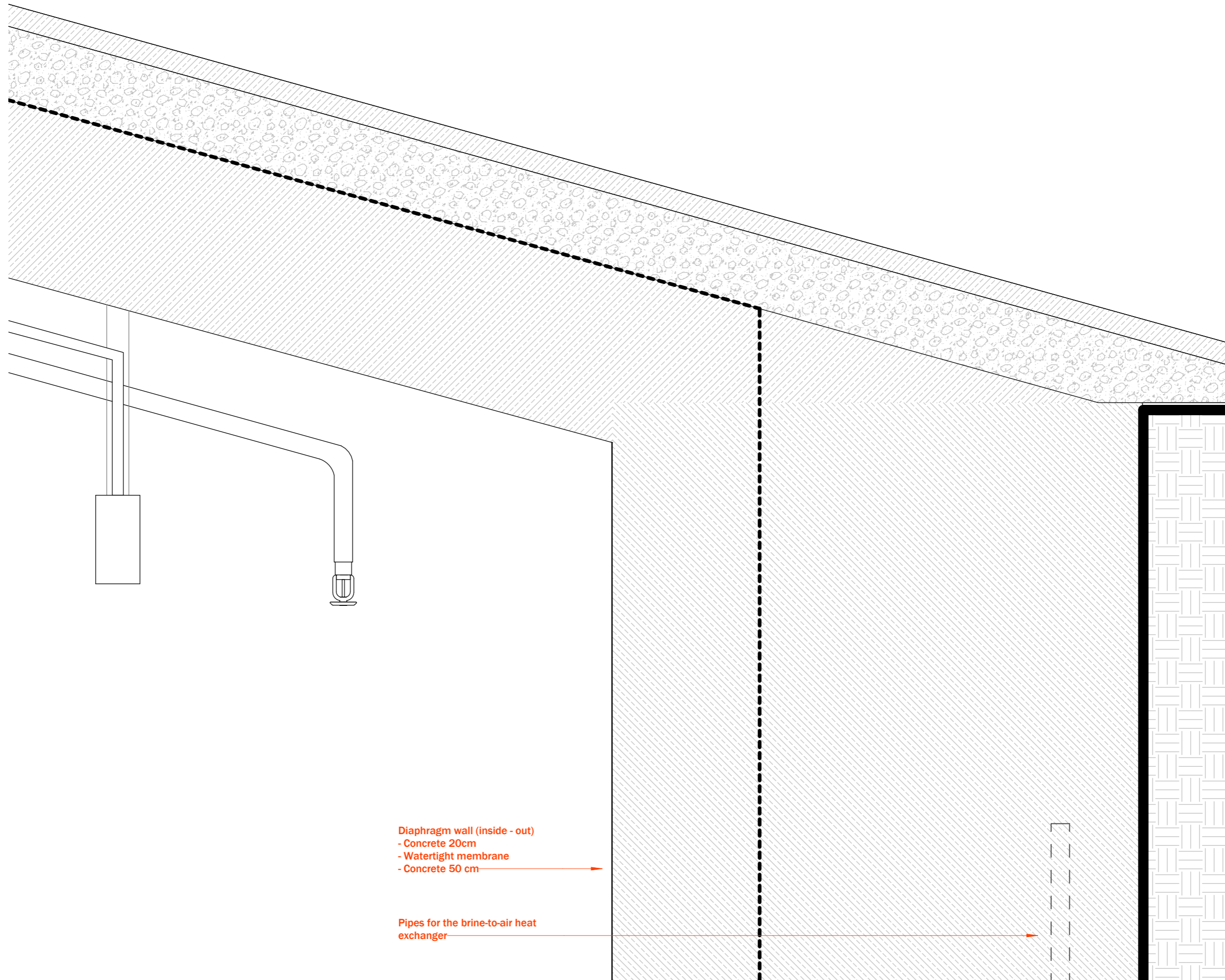
Underground - wall to parking

A4.08

Sheet No. Sheet size: A3



ELBETITSA



Diaphragm wall (inside - out)
- Concrete 20cm
- Watertight membrane
- Concrete 50 cm

Pipes for the brine-to-air heat exchanger

Project North



Scale 1:5

Underground - parking wall to ground

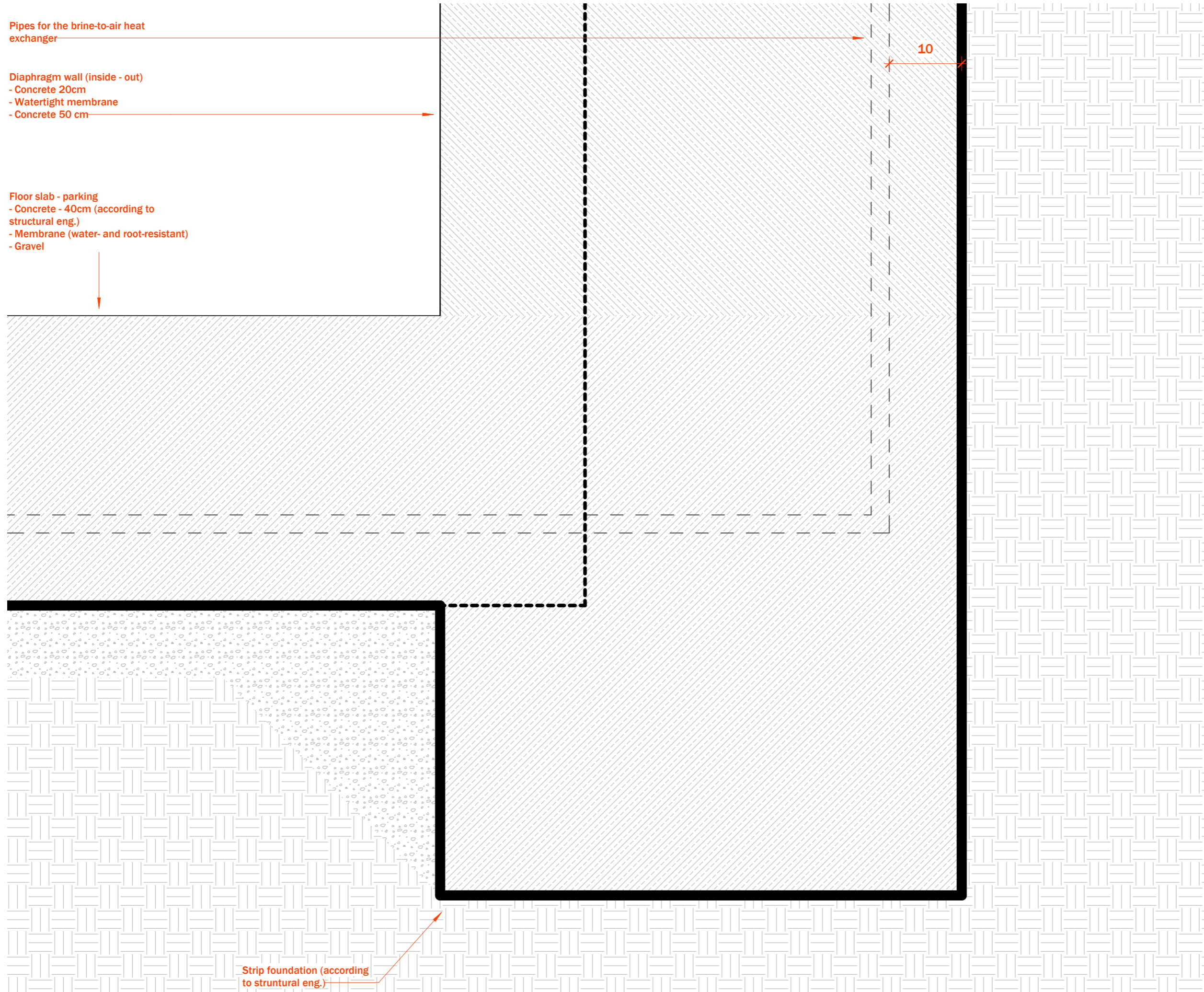
A4.09

Sheet No. Sheet size: A3

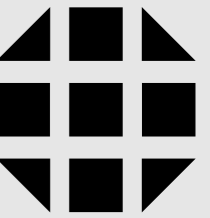
Pipes for the brine-to-air heat exchanger

Diaphragm wall (inside - out)
- Concrete 20cm
- Watertight membrane
- Concrete 50 cm

Floor slab - parking
- Concrete - 40cm (according to structural eng.)
- Membrane (water- and root-resistant)
- Gravel



Strip foundation (according to structural eng.)



ELBETITSA

Project North



Scale

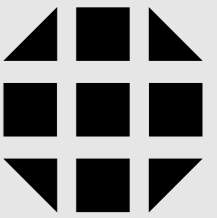
1:5

Underground - parking foundation

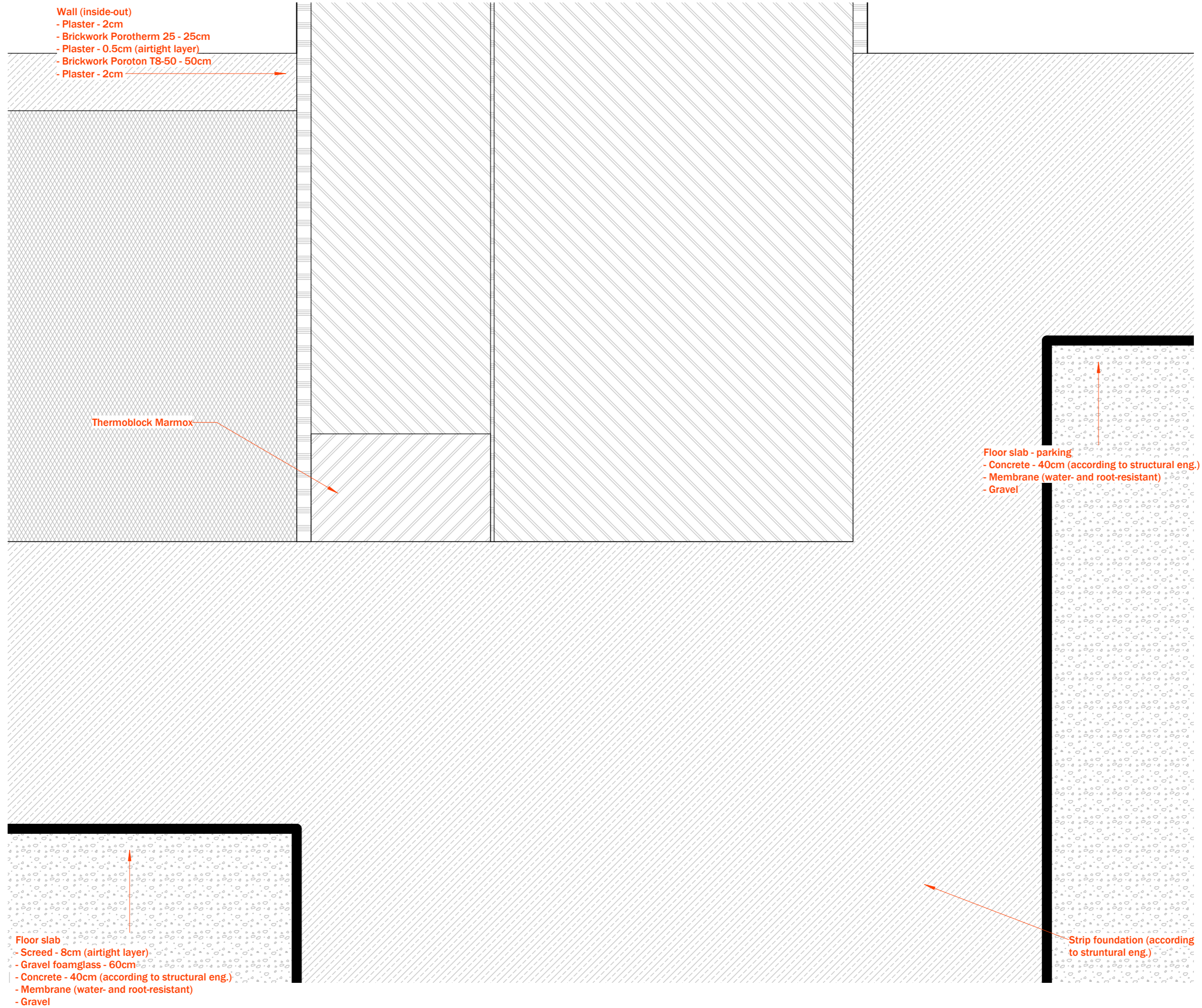
A4.10

Sheet No.

Sheet size: A3



ELBETITSA



Project North

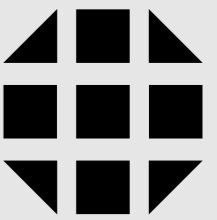
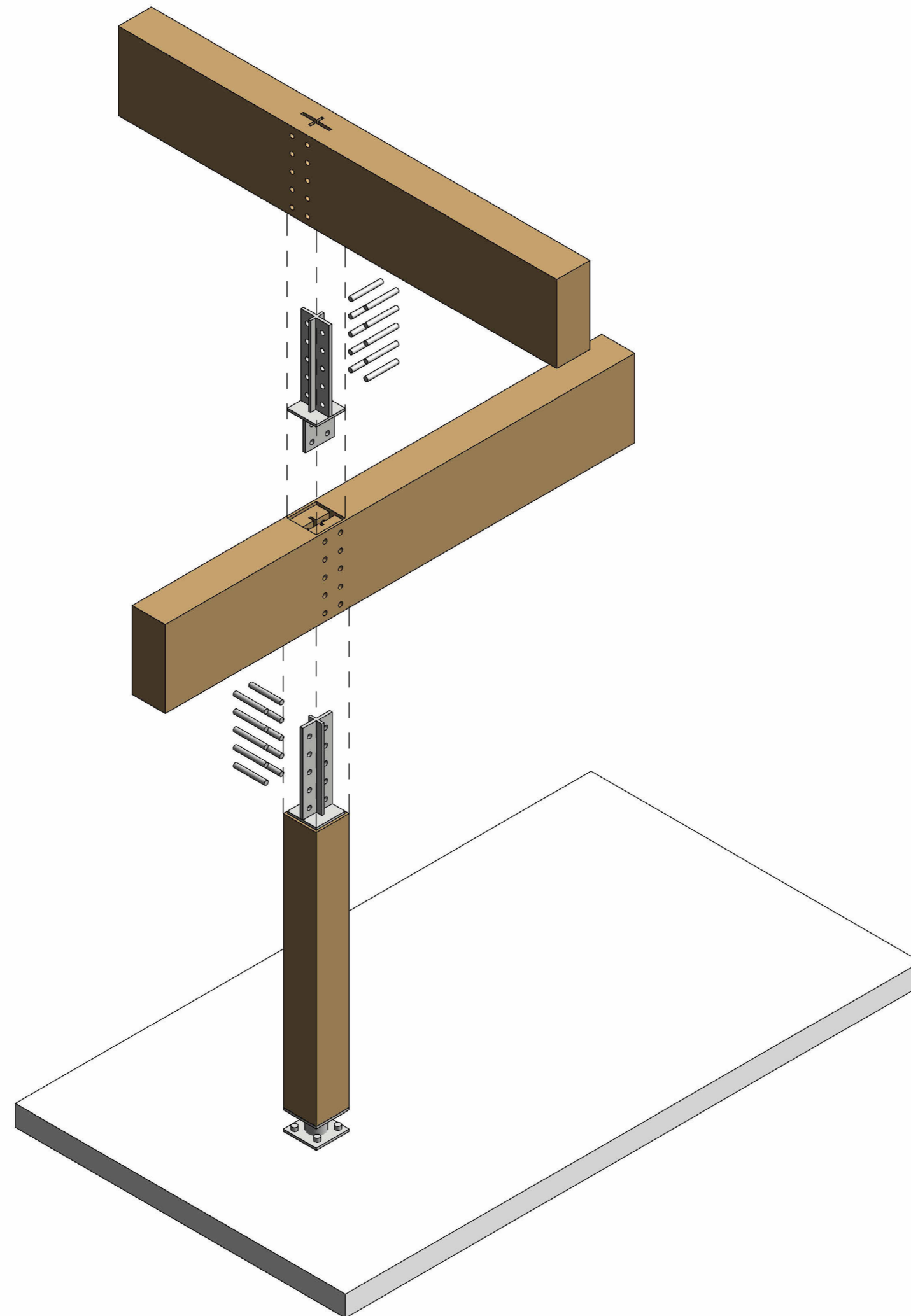


Scale 1:5

Underground - floor museum-parking

A4.11

Sheet No. Sheet size: A3



ELBETITSA

Project North



Scale

Top part structure
build up

A4.12

Sheet No.

Sheet size: A3