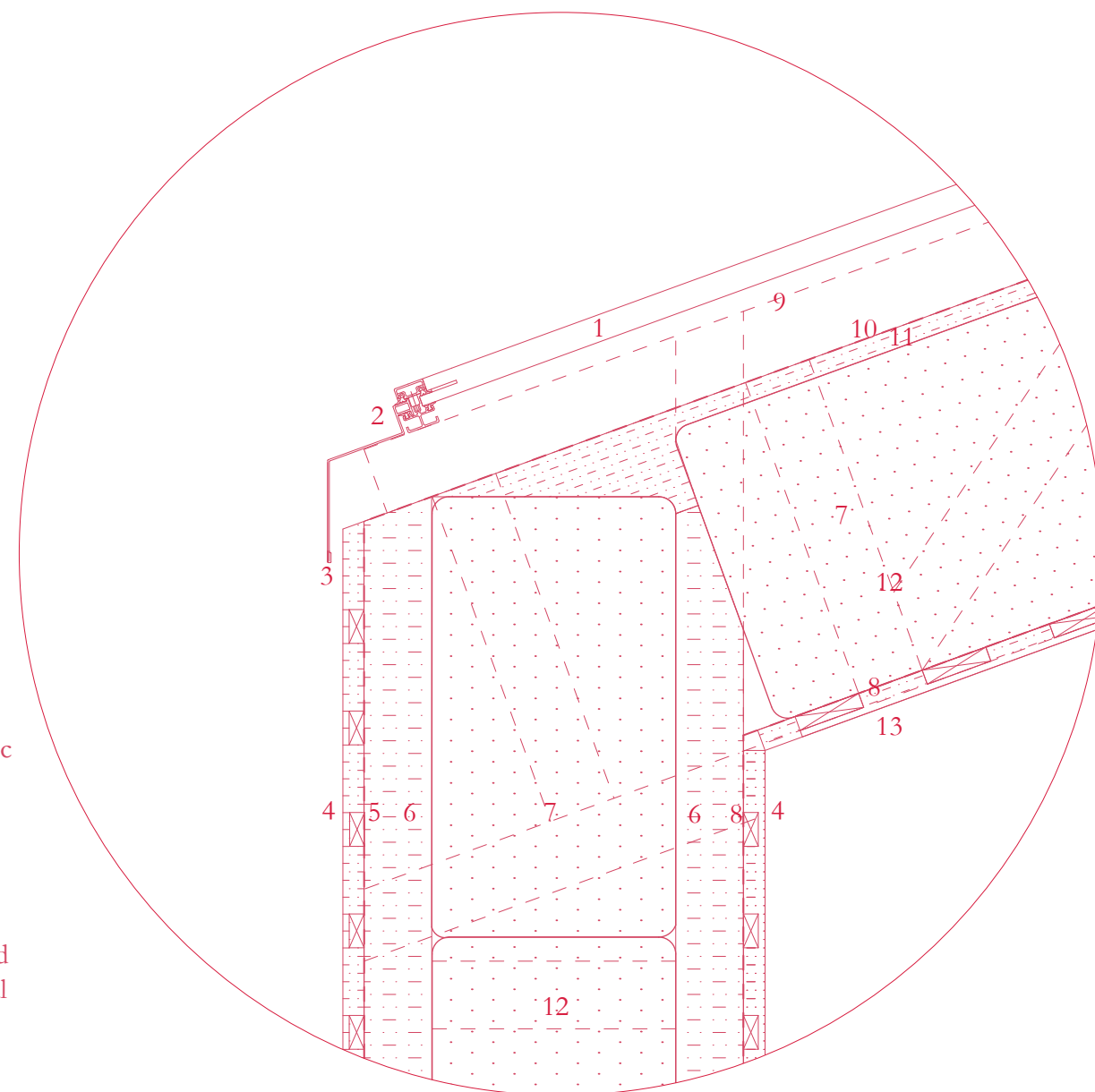


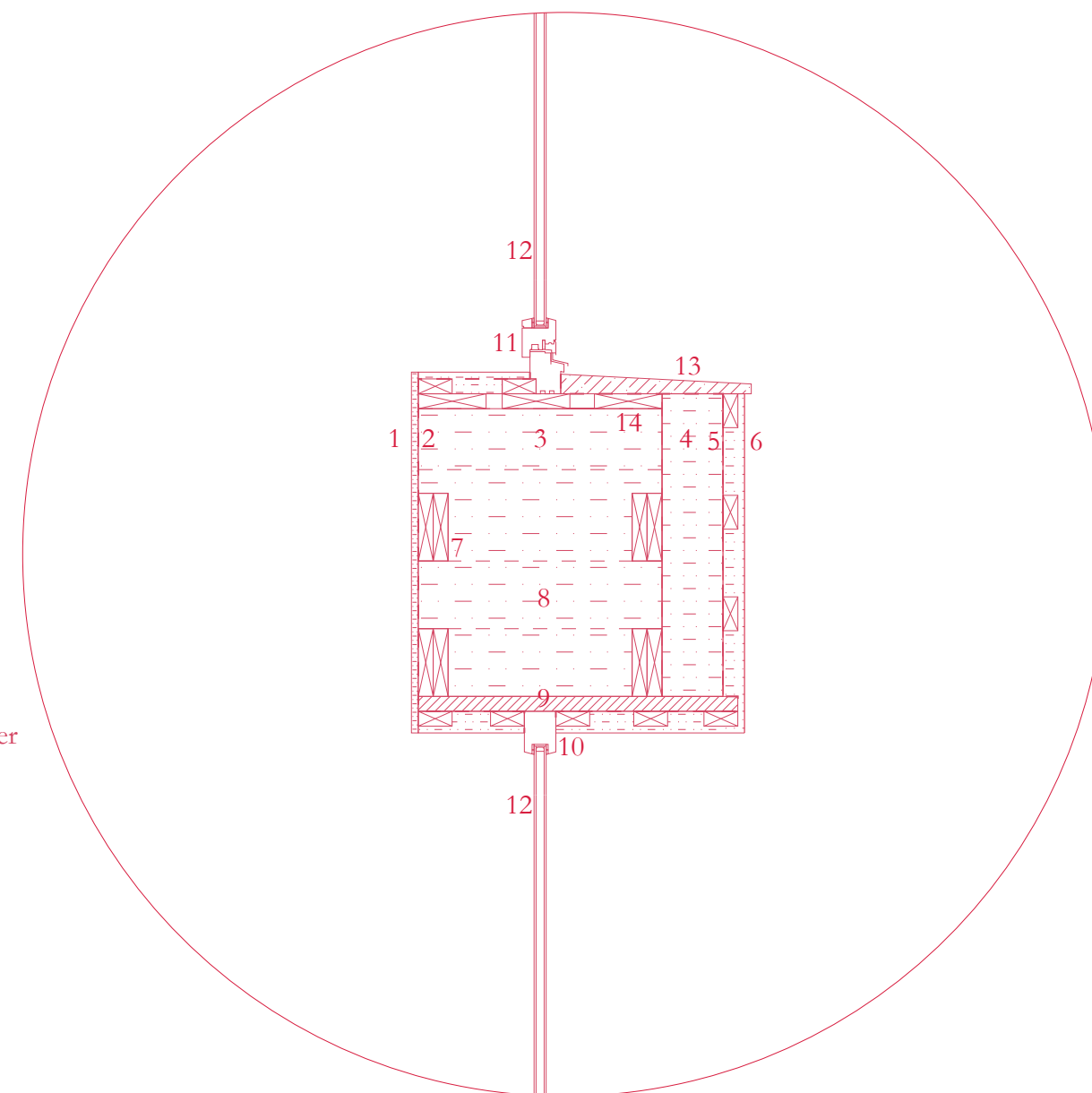


DETAILS 1:10

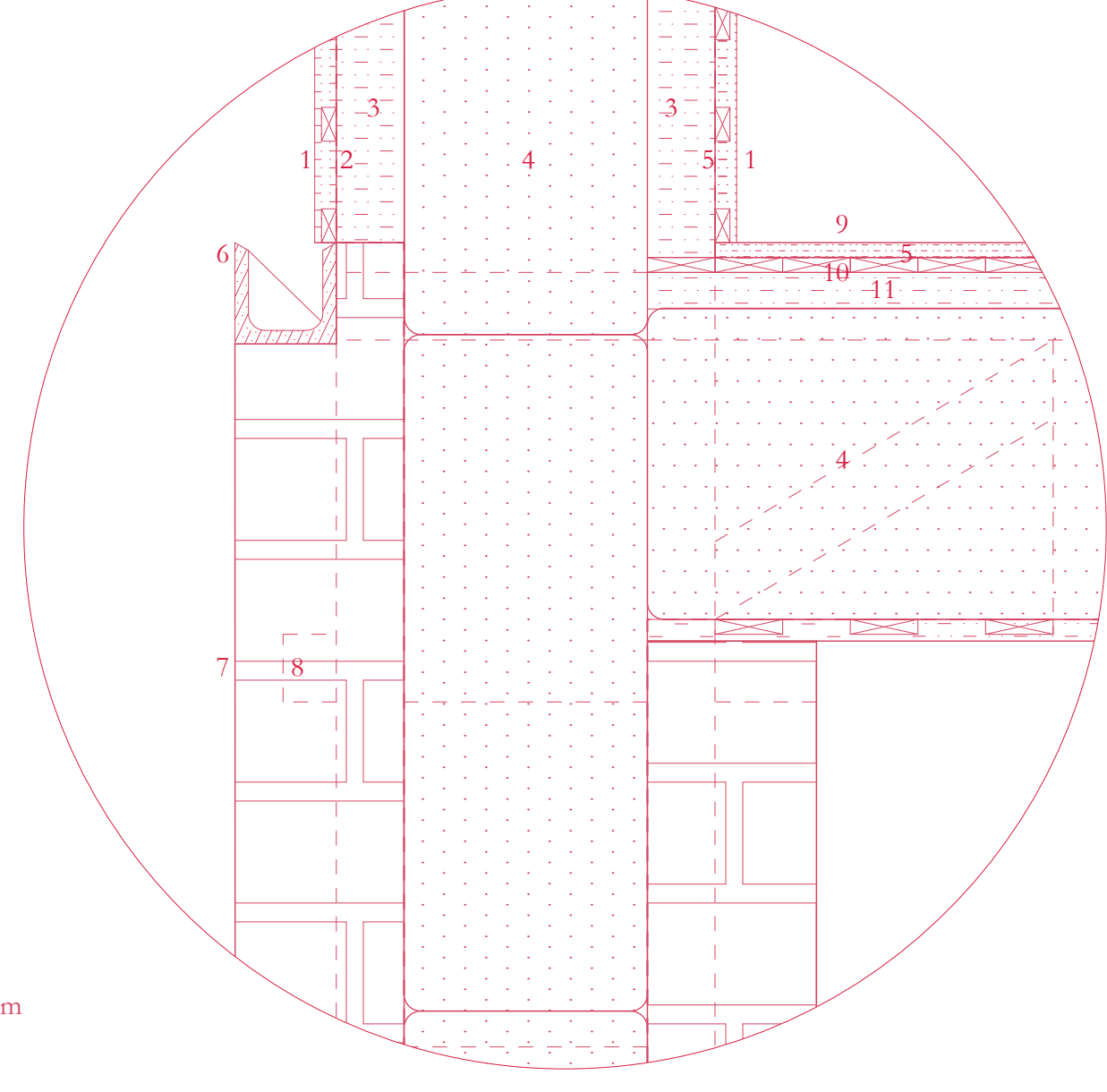
SECTION AA, 1:33



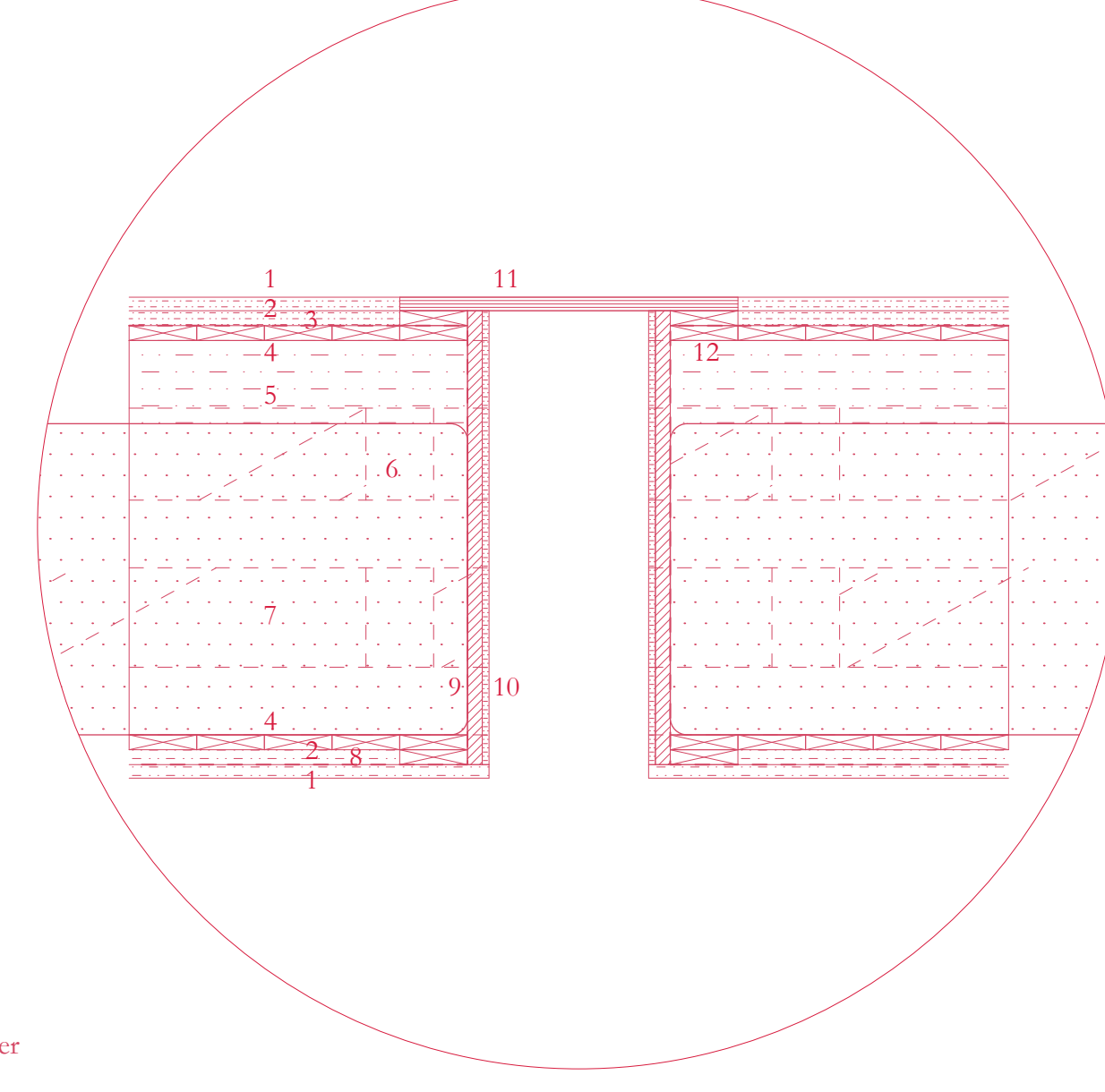
- 1) BIPV
- 2) aluminum rail PV panel support
- 3) aluminum roof flashing
- 4) fine grained adobe finish 32mm, supported by 22x30mm wooden battens protected by mineral wall paint if exterior
- 5) vapour open waterproofing membrane
- 6) adobe and straw fill 100mm between structural columns columns at 482mm c/c
- 7) straw bale, 36x46x100cm
- 8) vapour closed waterproofing membrane
- 9) timber roof beam in background, at 482mm c/c
- 10) vapour open roofing membrane
- 11) light straw and adobe fill
- 12) timber truss/ column connector in background
- 13) 32mm fine grained adobe ceiling finish supported by 22x100mm wooden battens



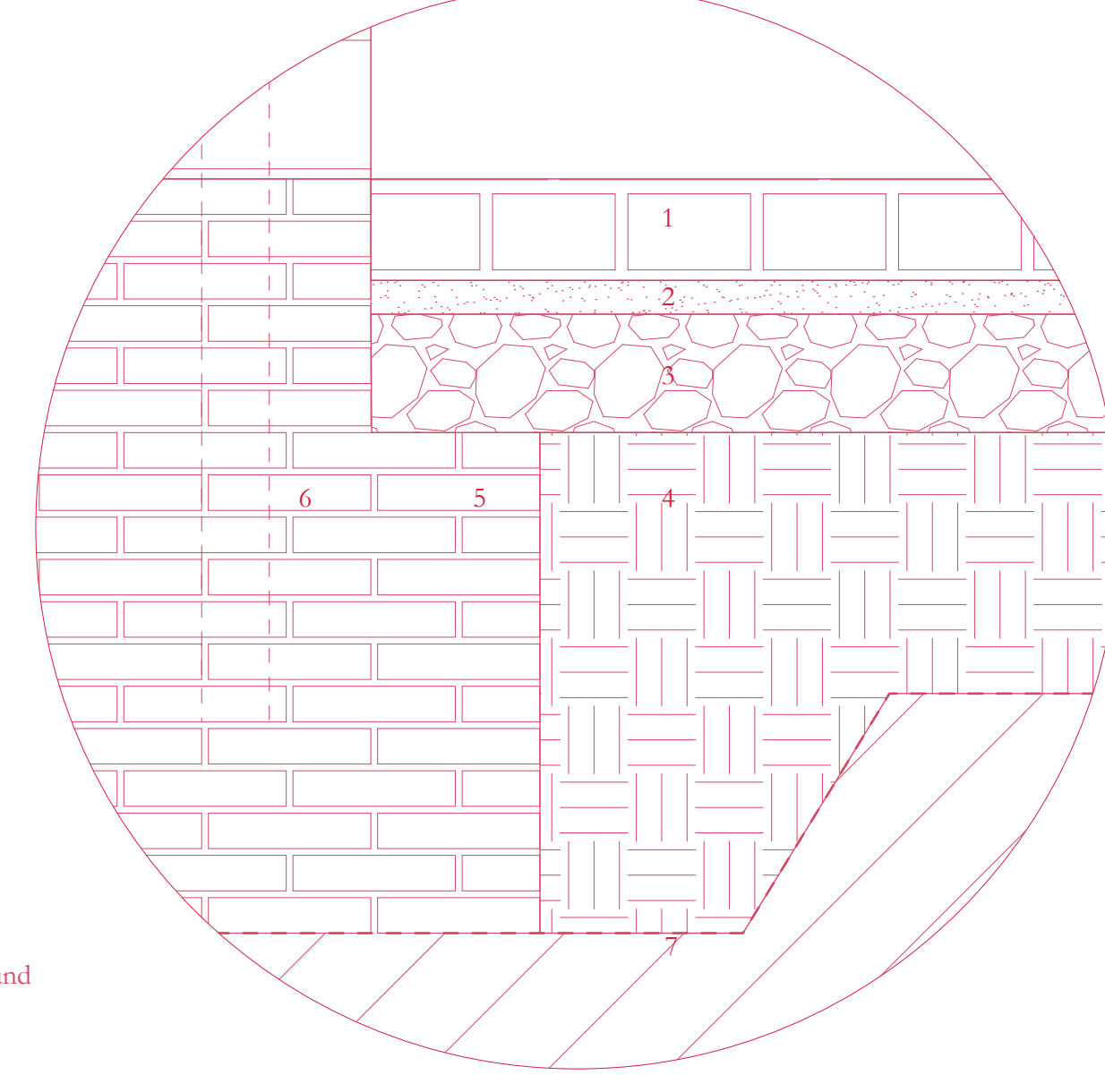
- 1) fine grained adobe finish, 10mm
- 2) vapour closed waterproofing membrane
- 3) light straw and adobe fill
- 4) adobe and straw fill 100mm between structural columns at 482mm c/c
- 5) vapour open waterproofing membrane
- 6) fine grained adobe finish 32mm, supported by 22x30mm wooden battens protected by mineral wall paint
- 7) window header beam composed of two 22x100mm timber sections
- 8) timber column connector in background
- 9) timber section 22x100mm at 600 c/c
- 10) vapour open roofing membrane
- 11) fixed window frame, wood
- 12) double glazing with 12mm air gap
- 13) ceramic sill element



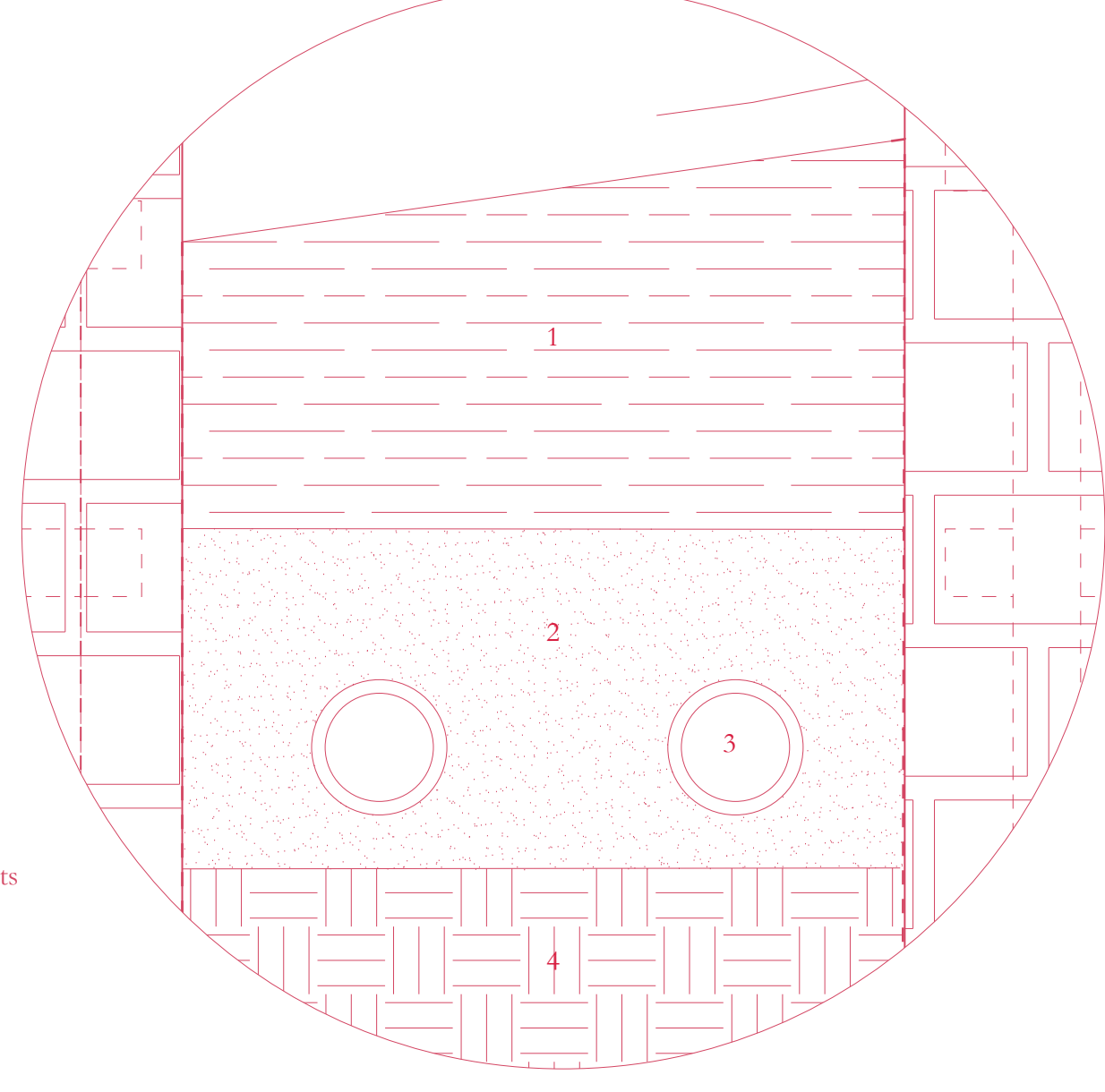
- 1) fine grained adobe finish 32mm, supported by 22x30mm wooden battens protected by mineral wall paint if exterior
- 2) vapour open waterproofing membrane
- 3) adobe and straw fill 100mm between structural columns columns at 482mm c/c
- 4) straw bale, 36x46x100cm
- 5) vapour closed waterproofing membrane
- 6) ceramic water gutter
- 7) natural stone cladding, 250mm
- 8) timber column connector in background
- 9) timber section 22x100mm at 600 c/c
- 10) fixed window frame, wood
- 11) inward opening hopper window frame, wood
- 12) double glazing with 12mm air gap
- 13) ceramic sill element



- 1) fine grained and polished adobe floor finish 20mm
- 2) fine grained adobe finish 22mm, timber flooring in cross direction in the background
- 3) vapour open waterproofing membrane
- 4) timber flooring 22x100mm, supported on structural beams at 482mm c/c
- 5) light straw and adobe fill
- 6) timber column connector in background
- 7) straw bale 36x46x100cm
- 8) vapour closed waterproofing membrane
- 9) timber section framing the opening, 22x100mm
- 10) fine grained adobe finish 10mm
- 11) toughened glass glazed to supporting members on its perimeter, 20mm
- 12) timber supporting members around walkable glass perimeter



- 1) natural stone floor finish 150mm
- 2) sand leveling 50mm
- 3) gravel backfill 175mm
- 4) compacted earth backfill
- 5) masonry foundation
- 6) main structural columns in the background embedded in masonry foundation
- 7) underground waterproofing membrane



- 1) organic soil for growing climbing plants approx. 500mm
- 2) sand filtration layer 500mm
- 3) perforated water pipe, d=160mm
- 4) compacted earth backfill



