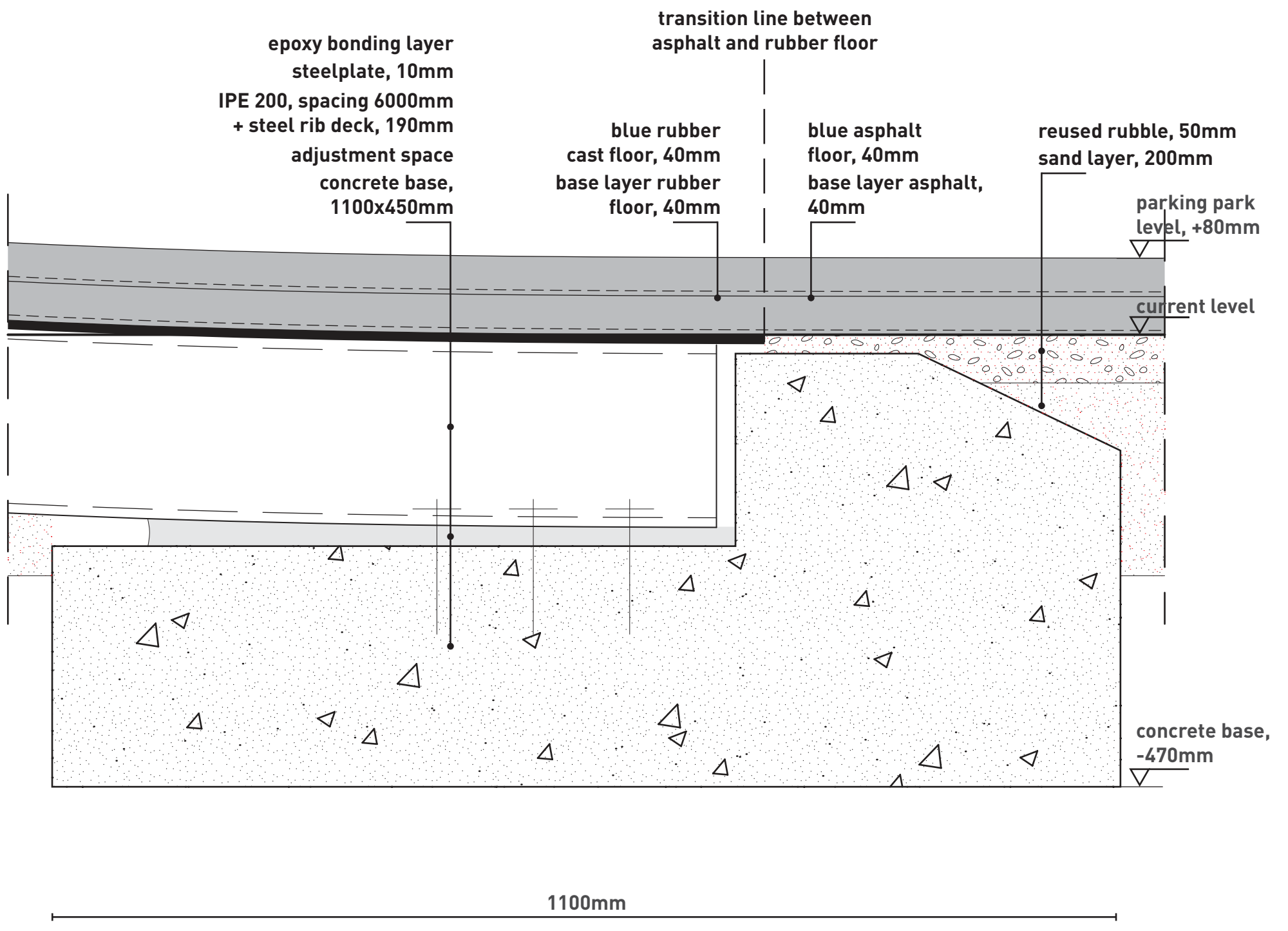


detail 1

scale 1:5

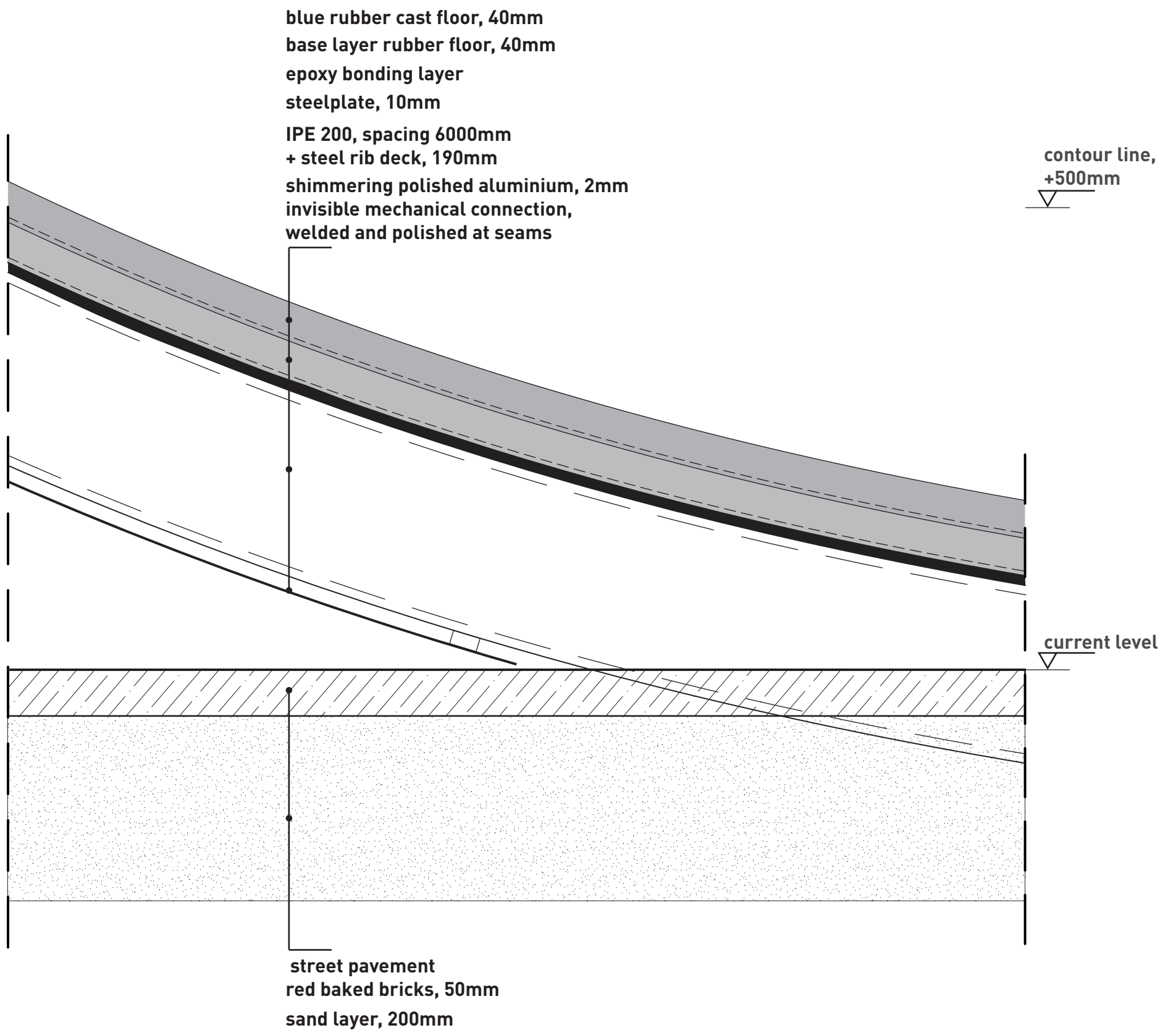




detail 2

scale 1:5

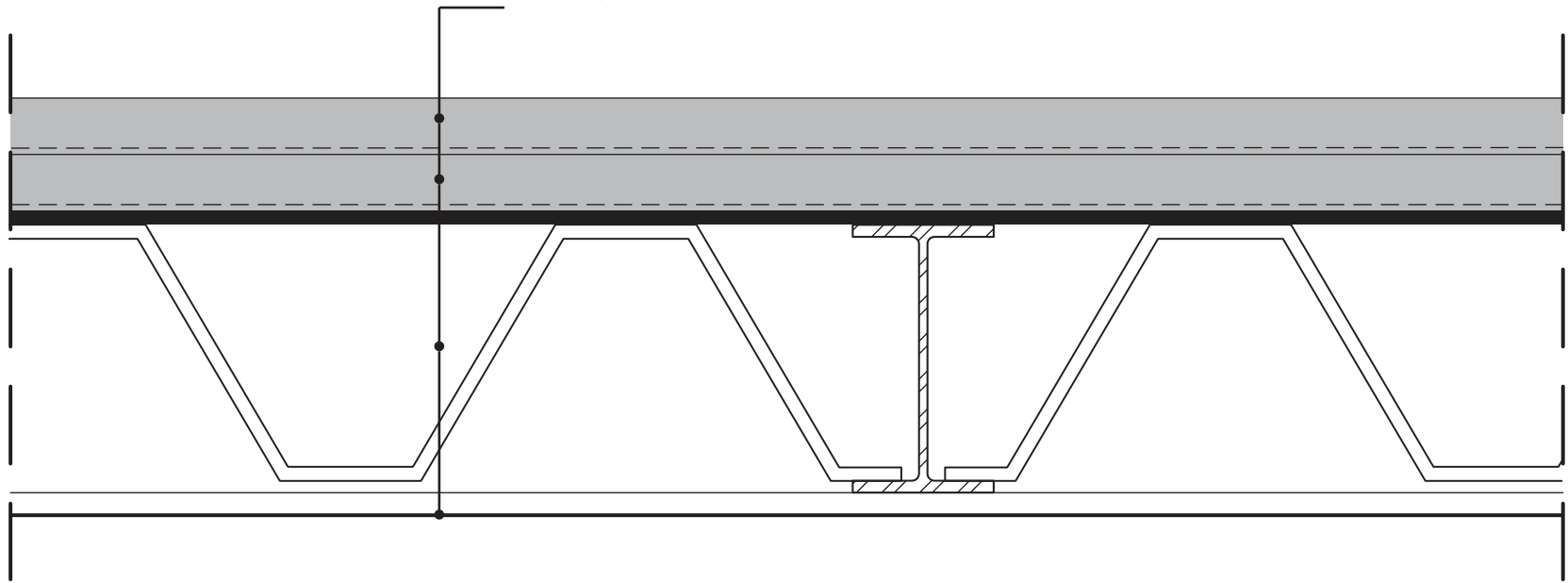




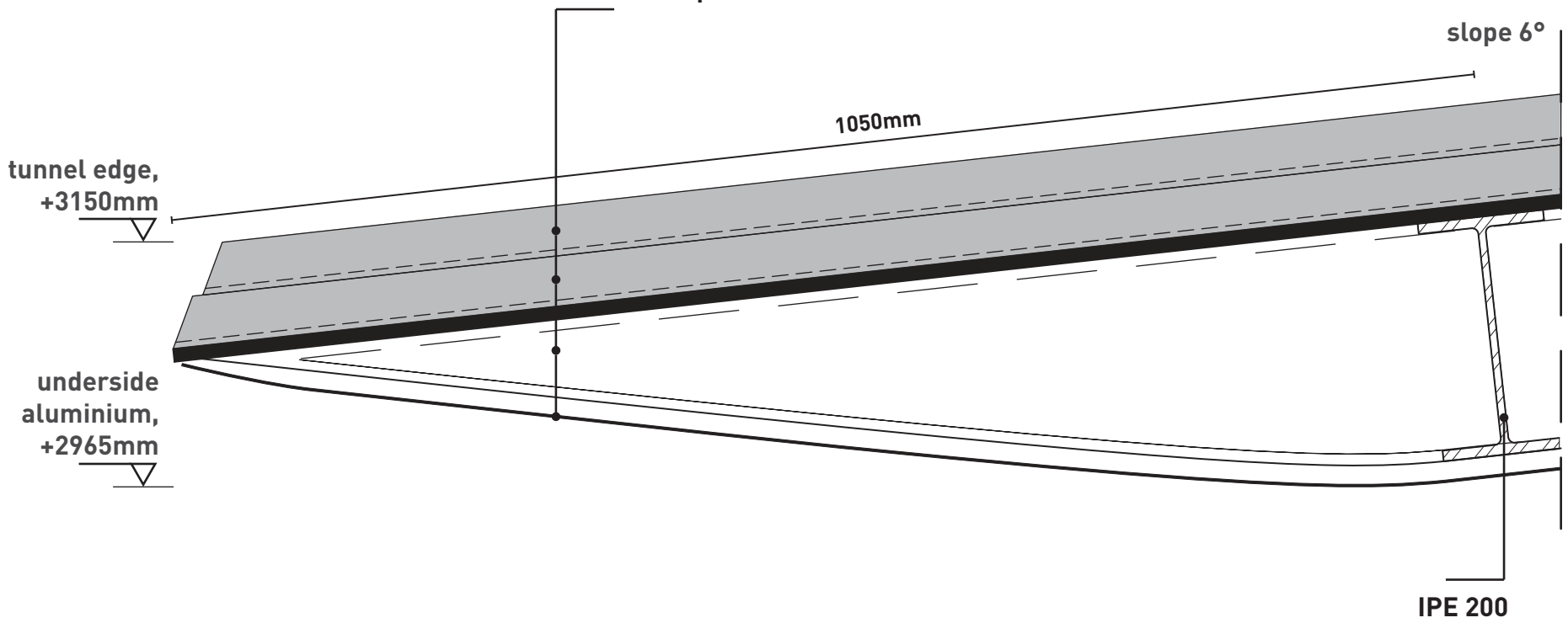
detail 3

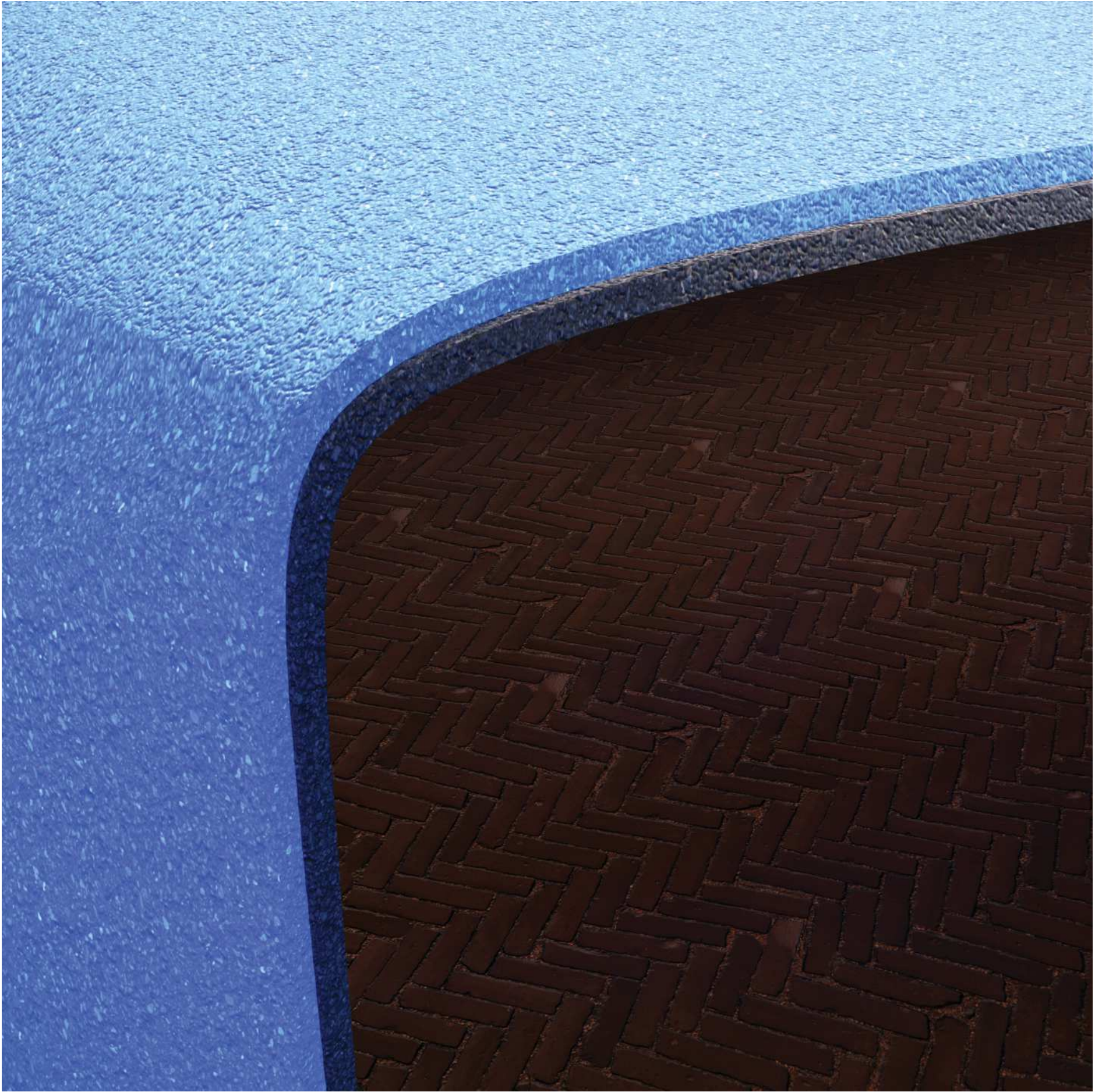
scale 1:5

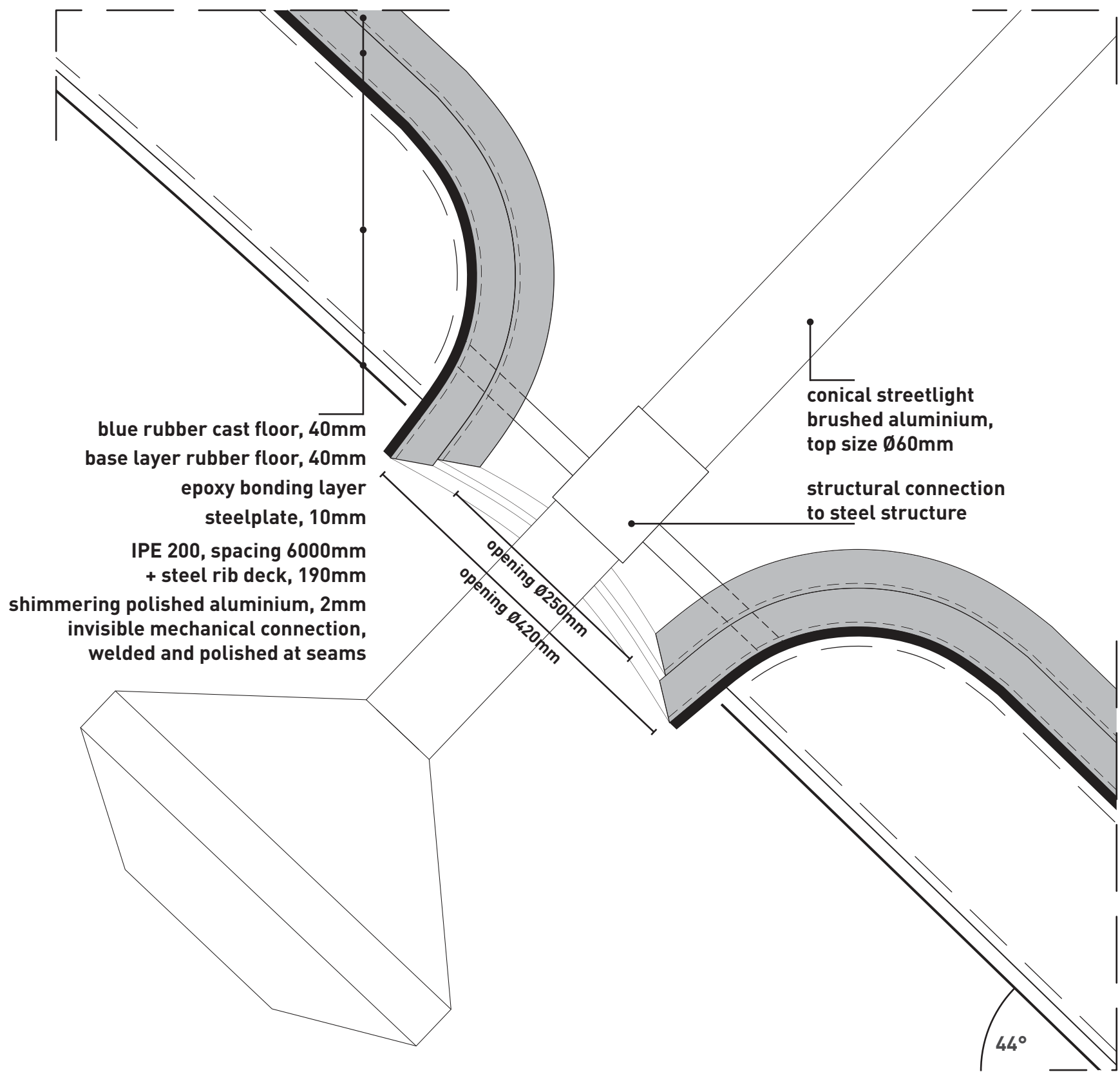
blue rubber cast floor, 40mm
base layer rubber floor, 40mm
epoxy bonding layer
steelplate, 10mm
IPE 200, spacing 6000mm
+ steel rib deck, 190mm
shimmering polished aluminium, 2mm
invisible mechanical connection,
welded and polished at seams



blue rubber cast floor, 40mm
base layer rubber floor, 40mm
epoxy bonding layer
steelplate, 10mm
IPE 200, spacing 6000mm
+ steel rib deck, 190mm
shimmering polished aluminium, 2mm
invisible mechanical connection,
welded and polished at seams



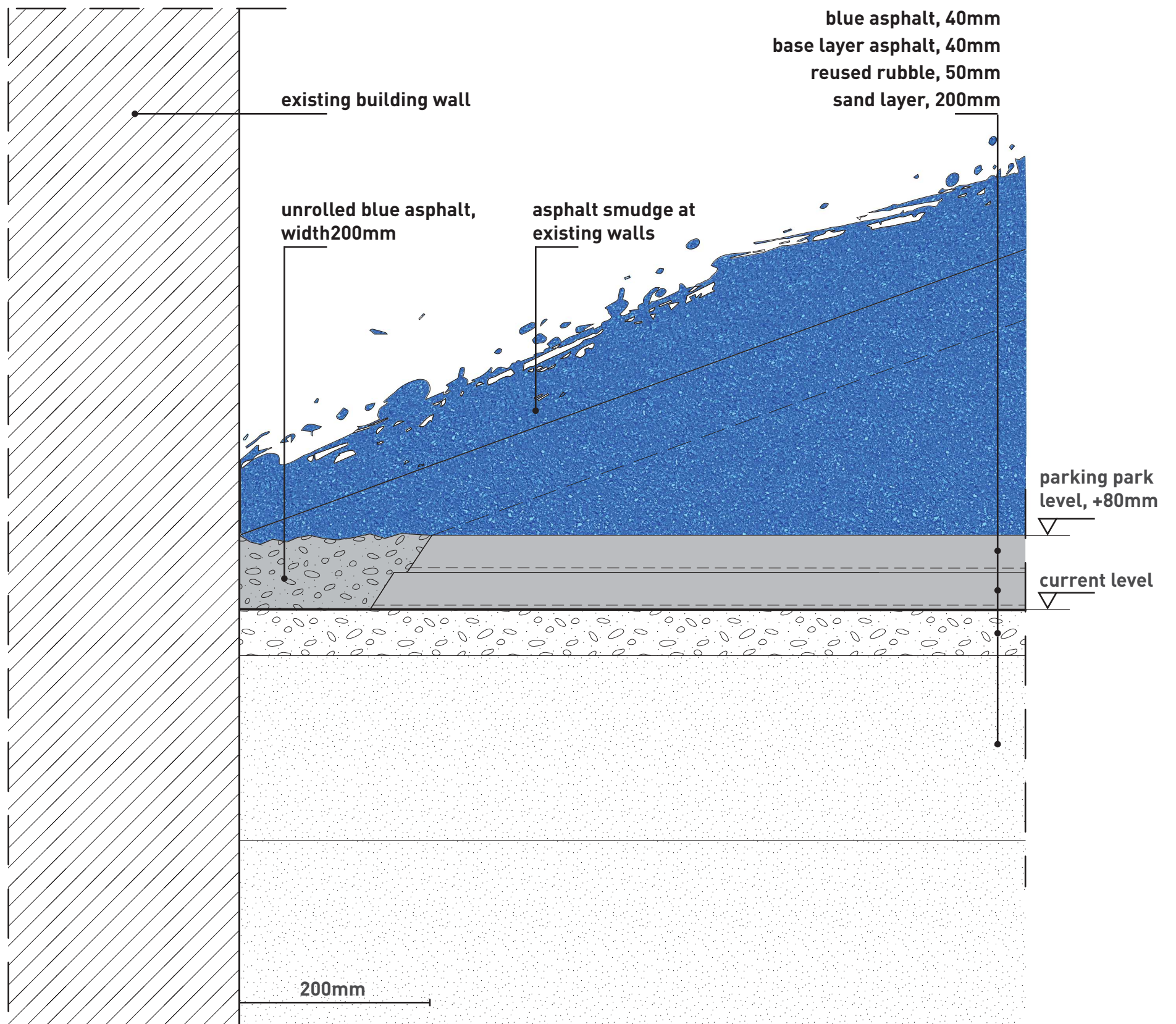




detail 6

scale 1:5

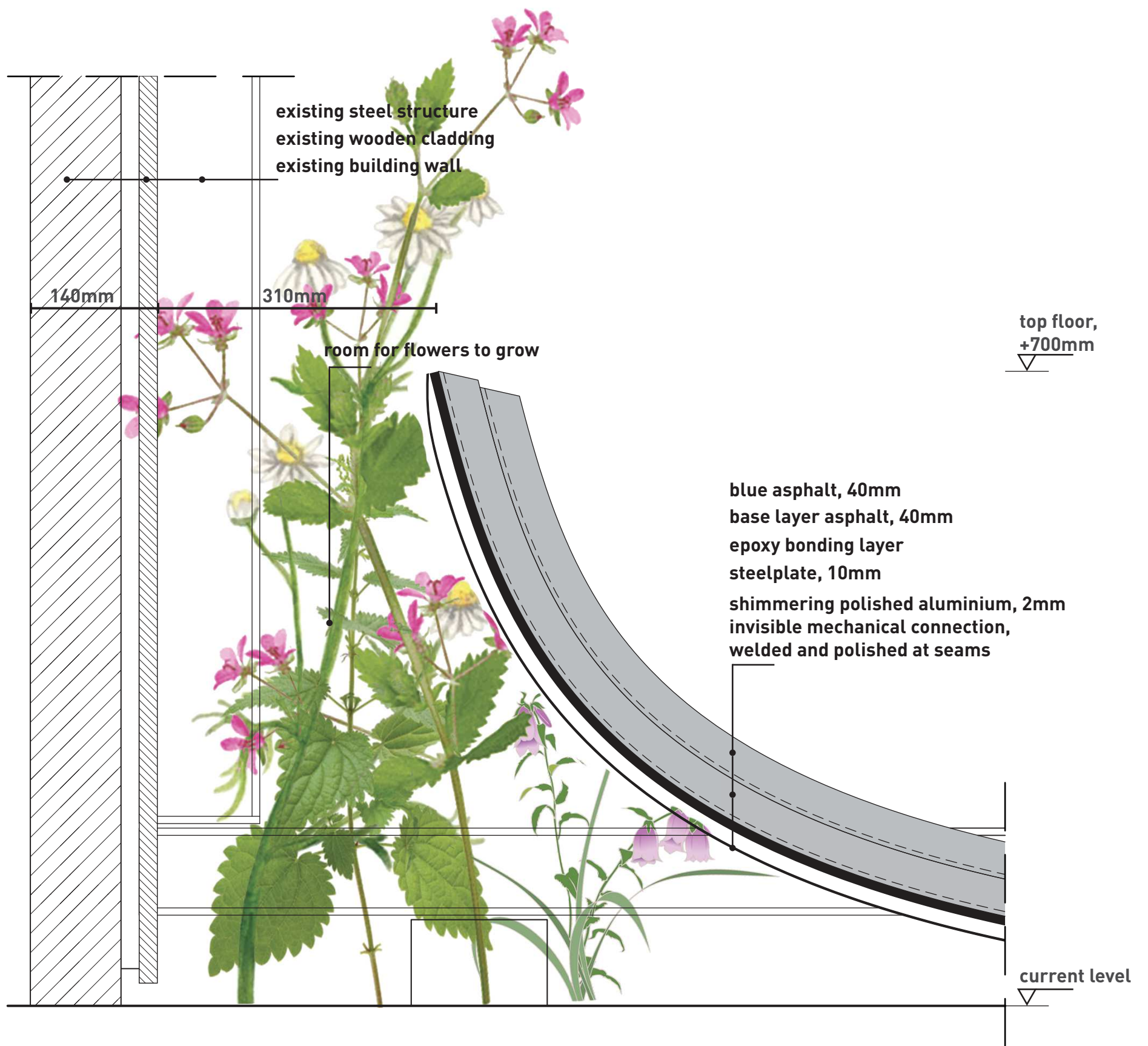




detail 7

scale 1:5

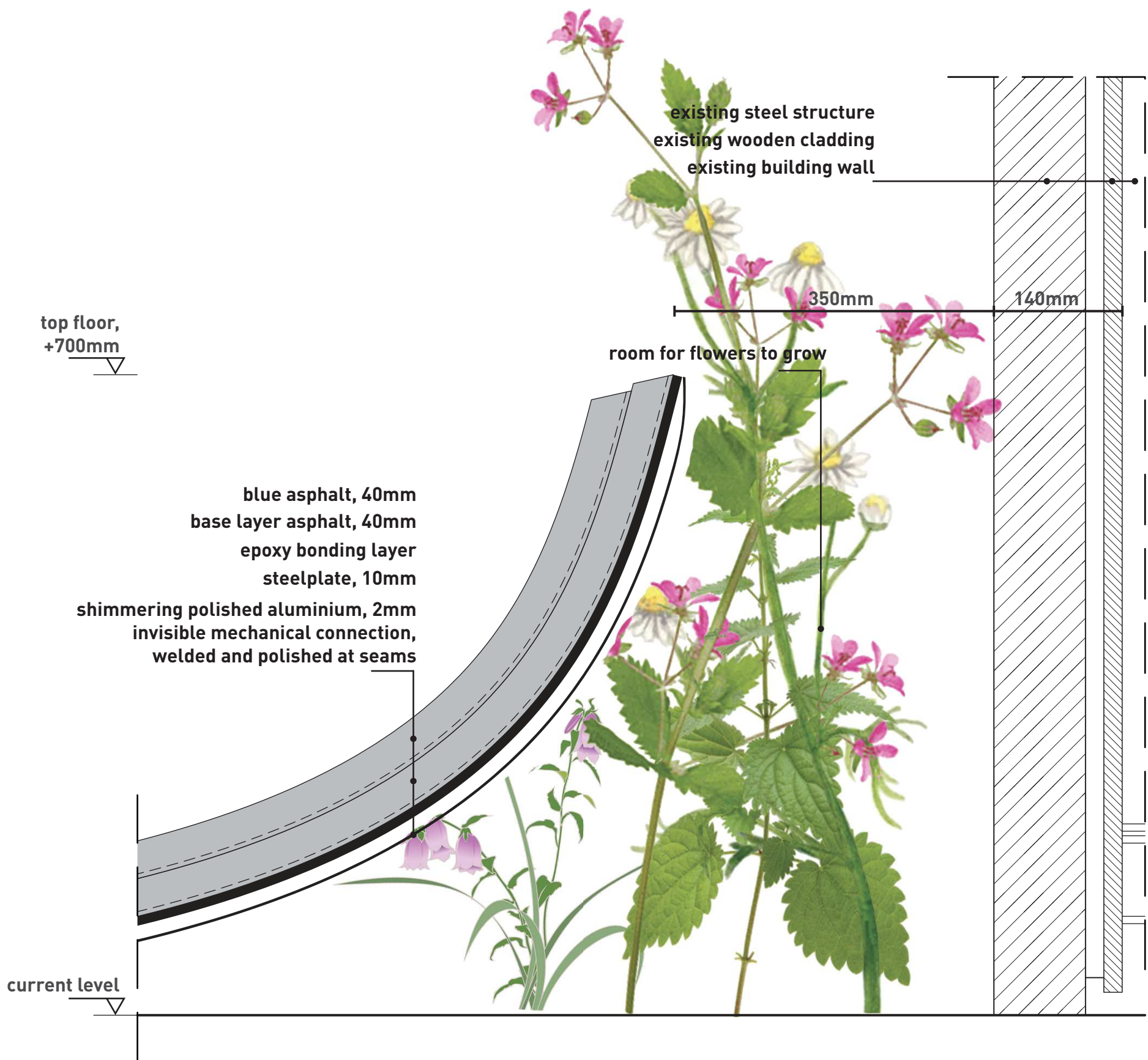




detail 8

scale 1:5

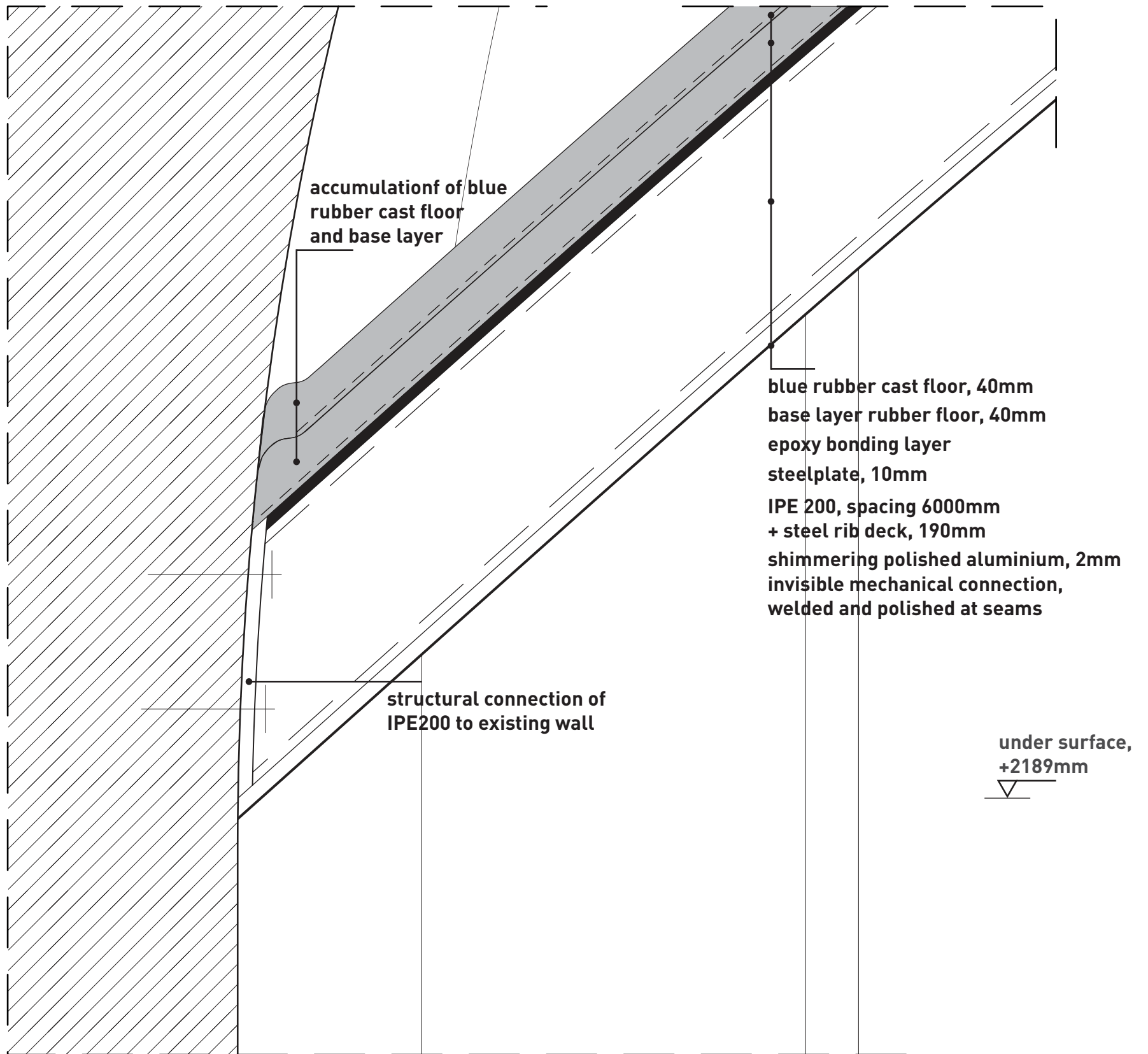




detail 9

scale 1:5

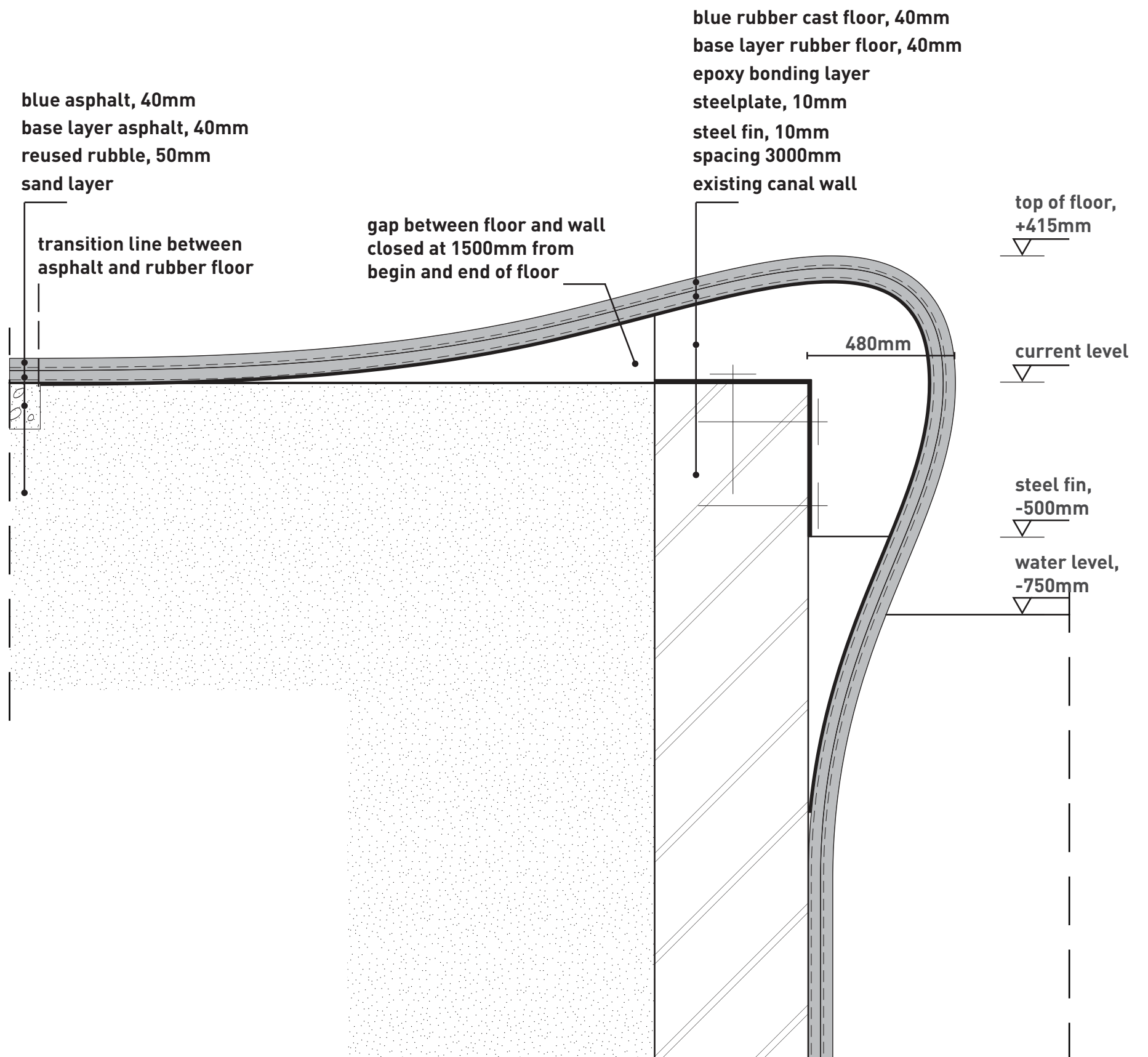




detail 10

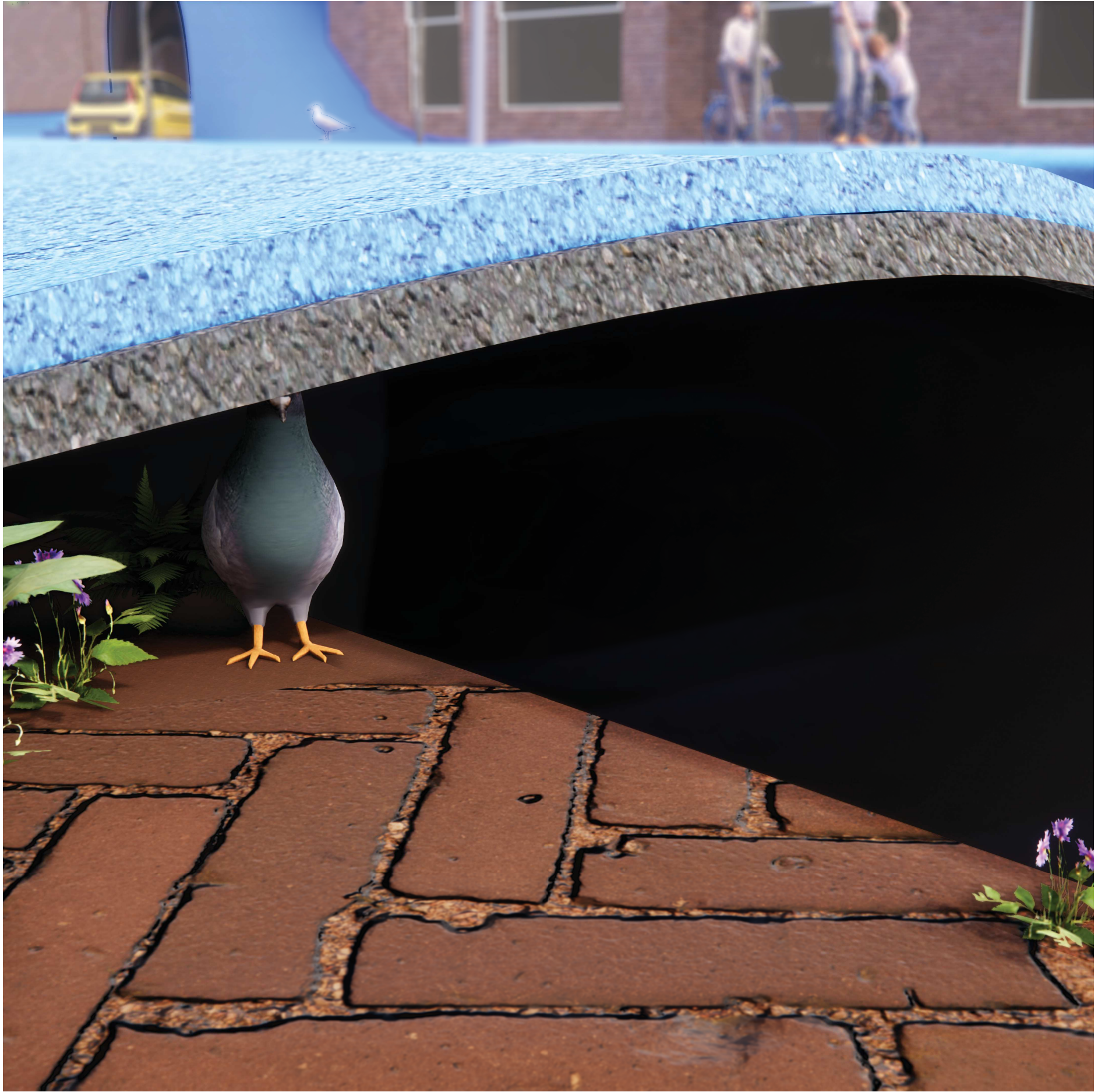
scale 1:5

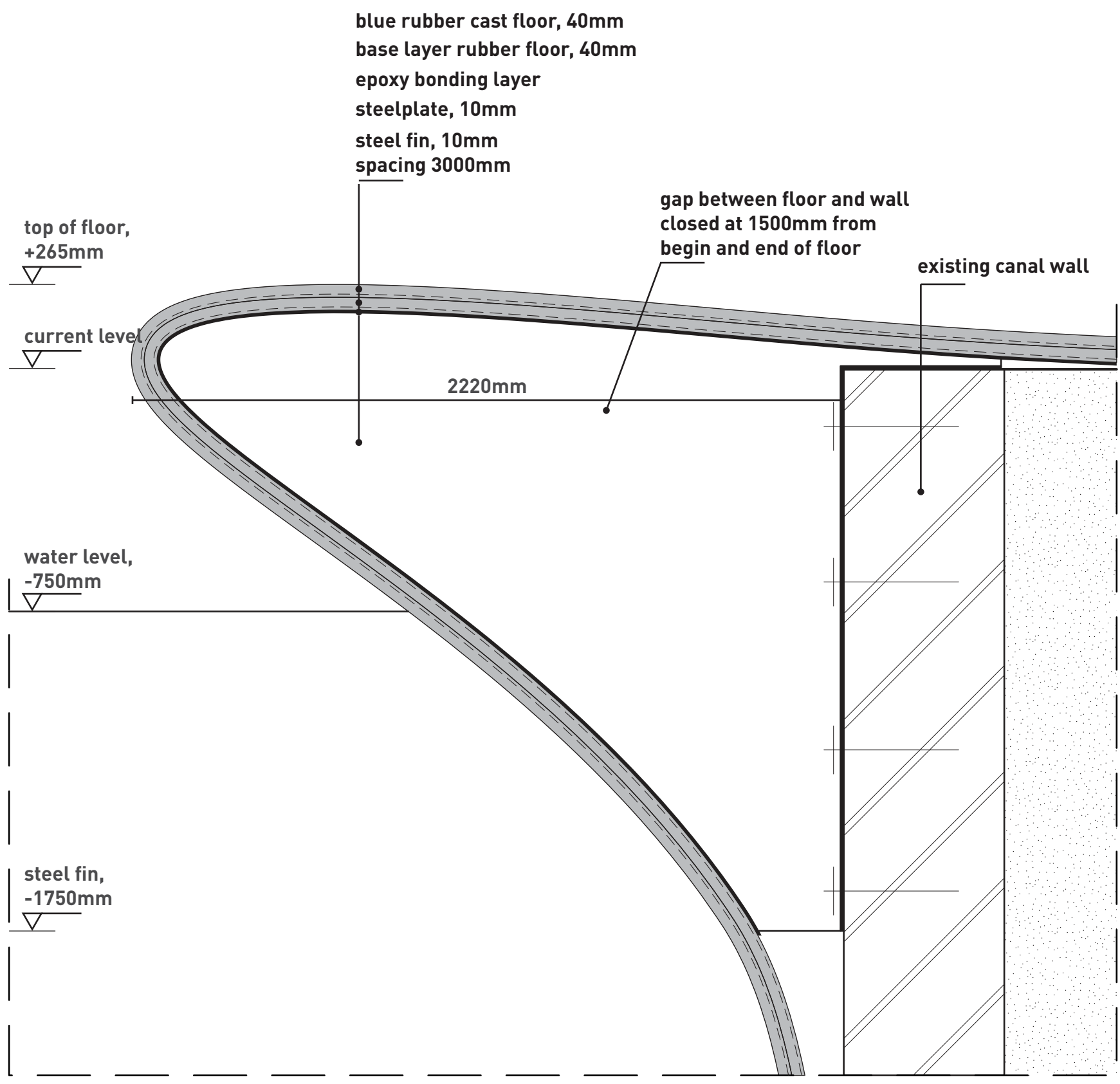




detail 11

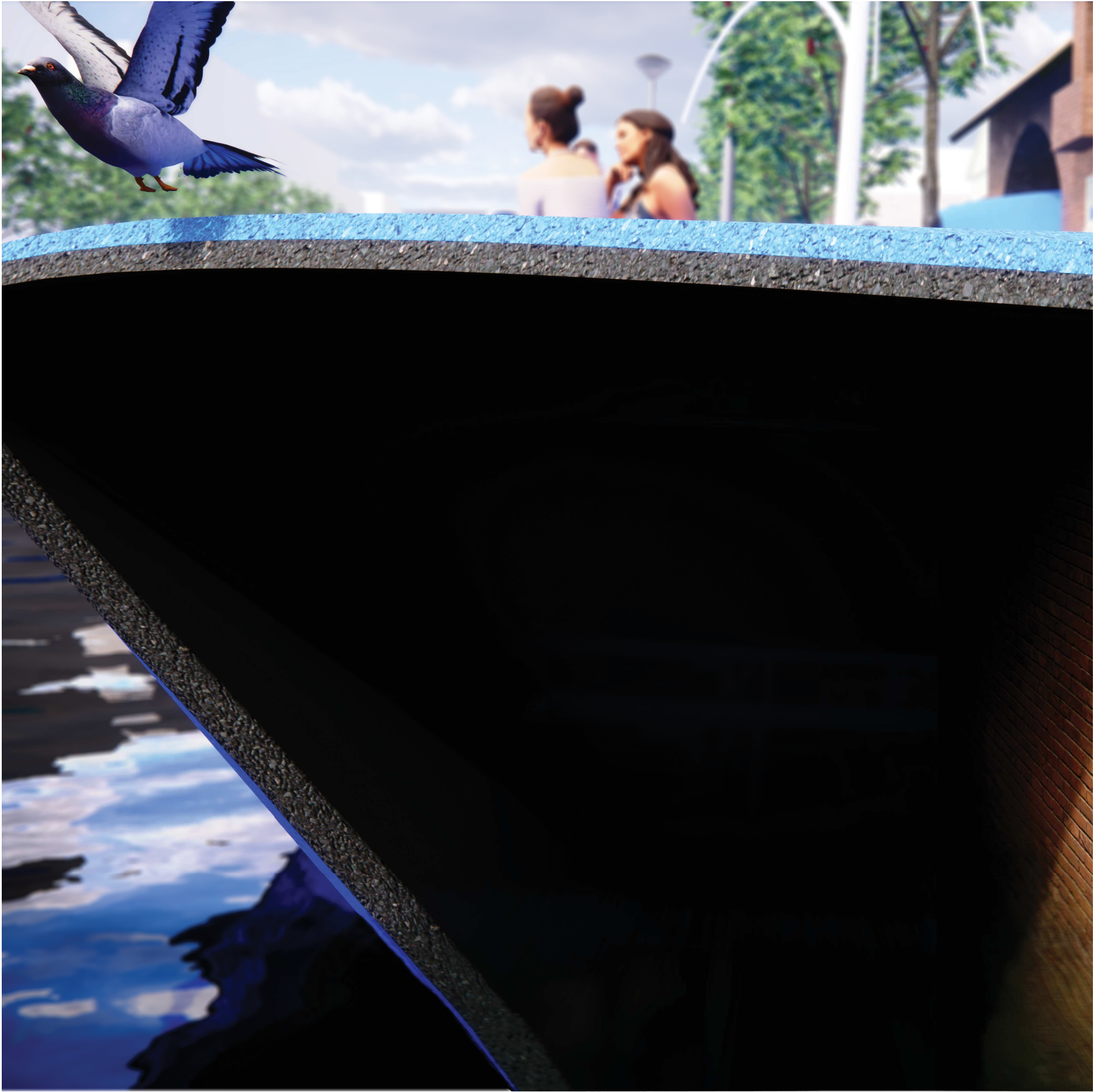
scale 1:15

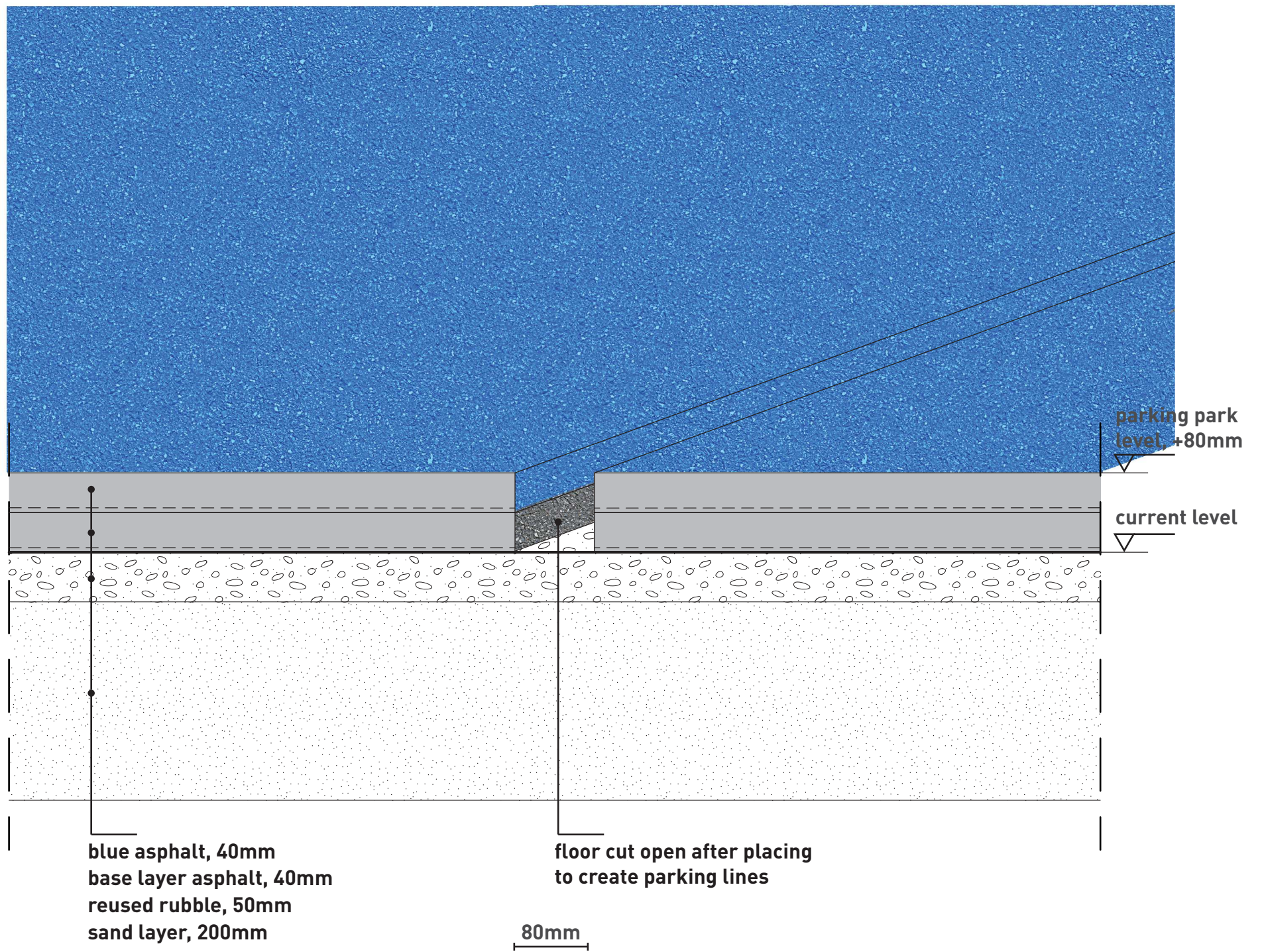




detail 12

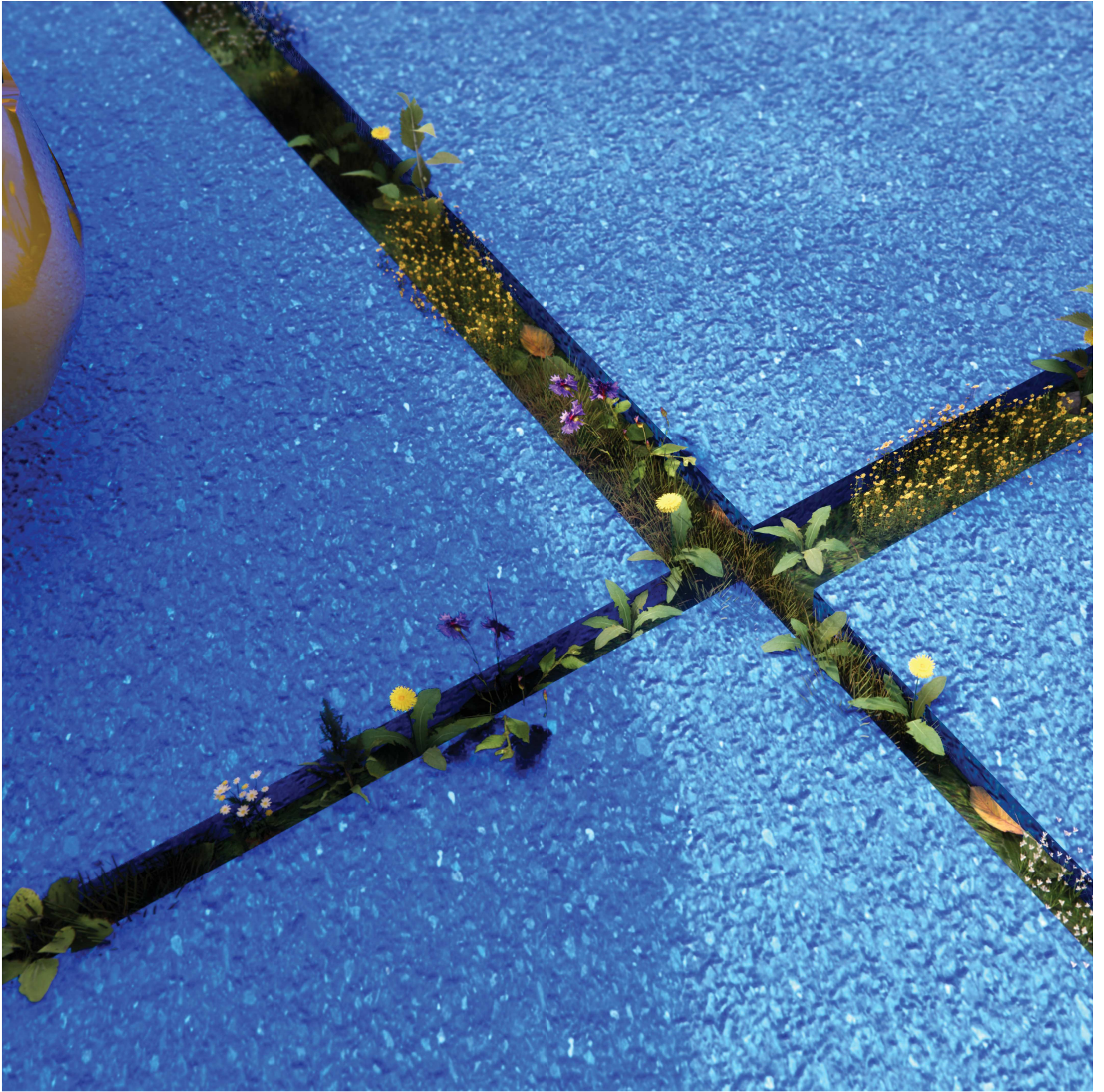
scale 1:15

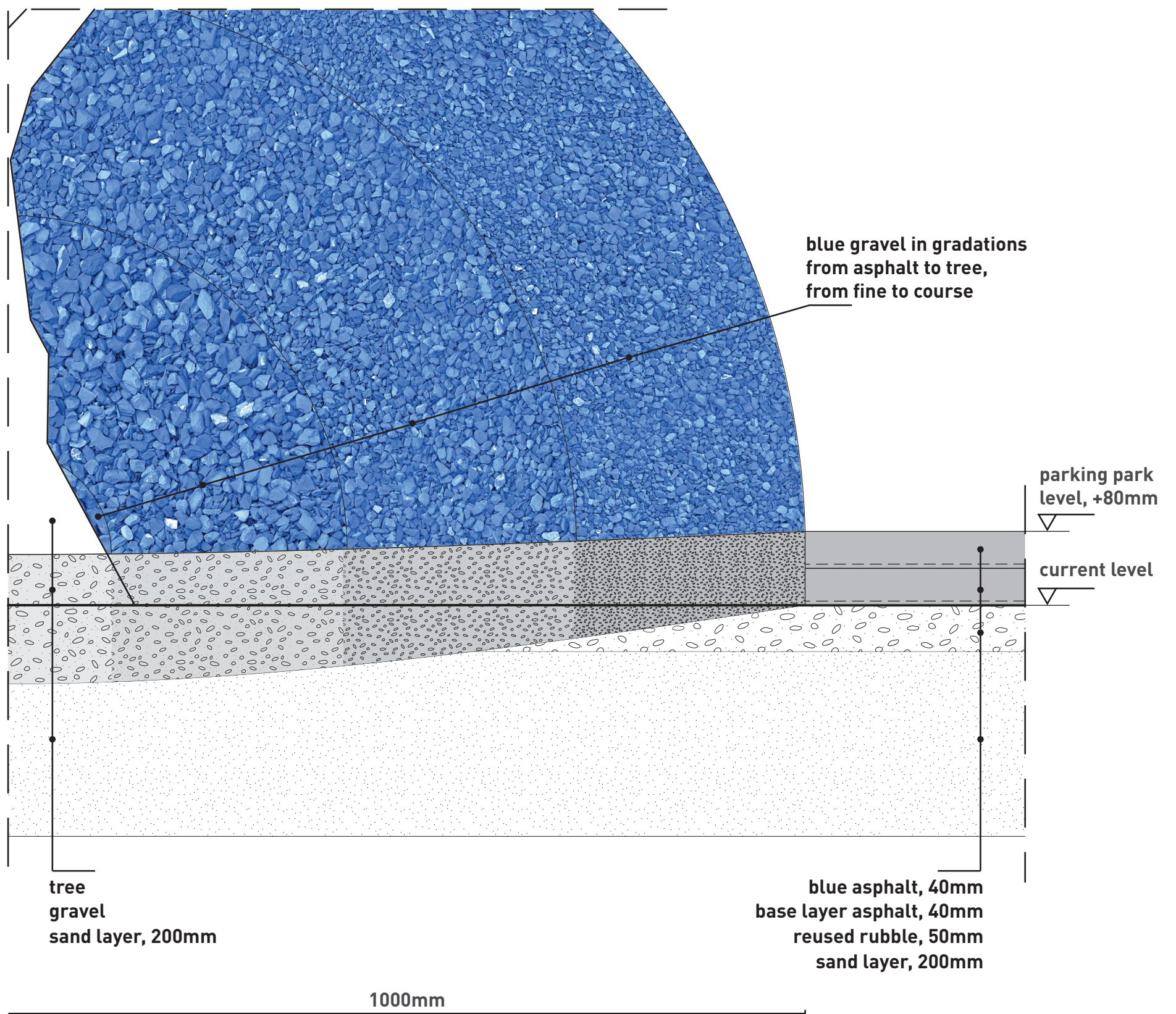




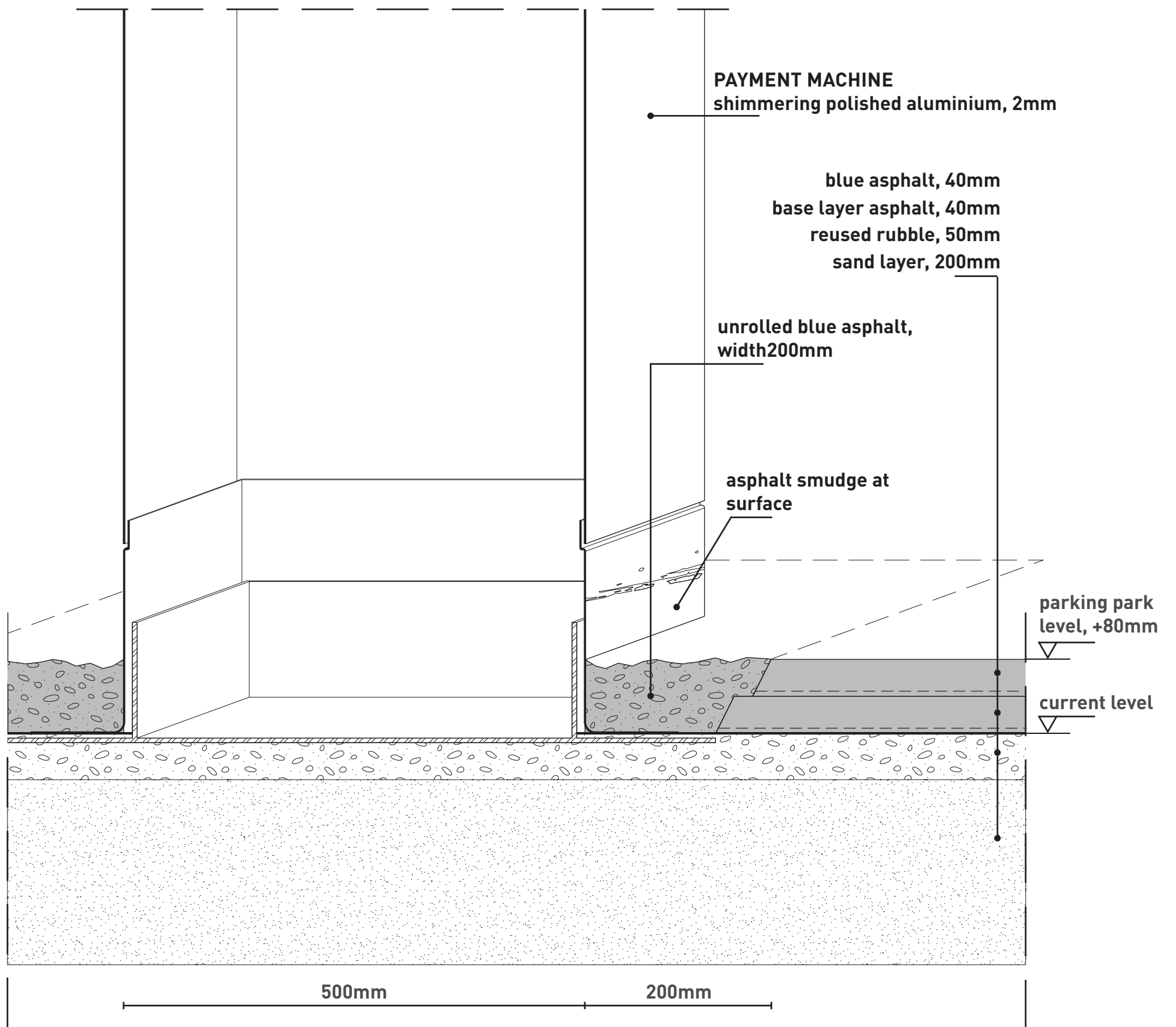
detail 13

scale 1:5









detail 15

scale 1:5

