

Enabling constraints



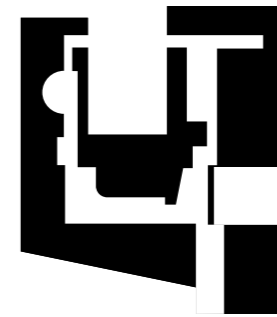
Porosity



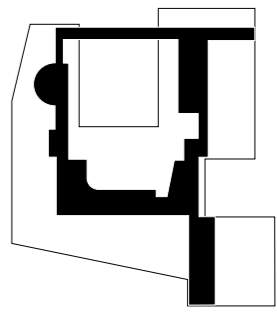
Loop



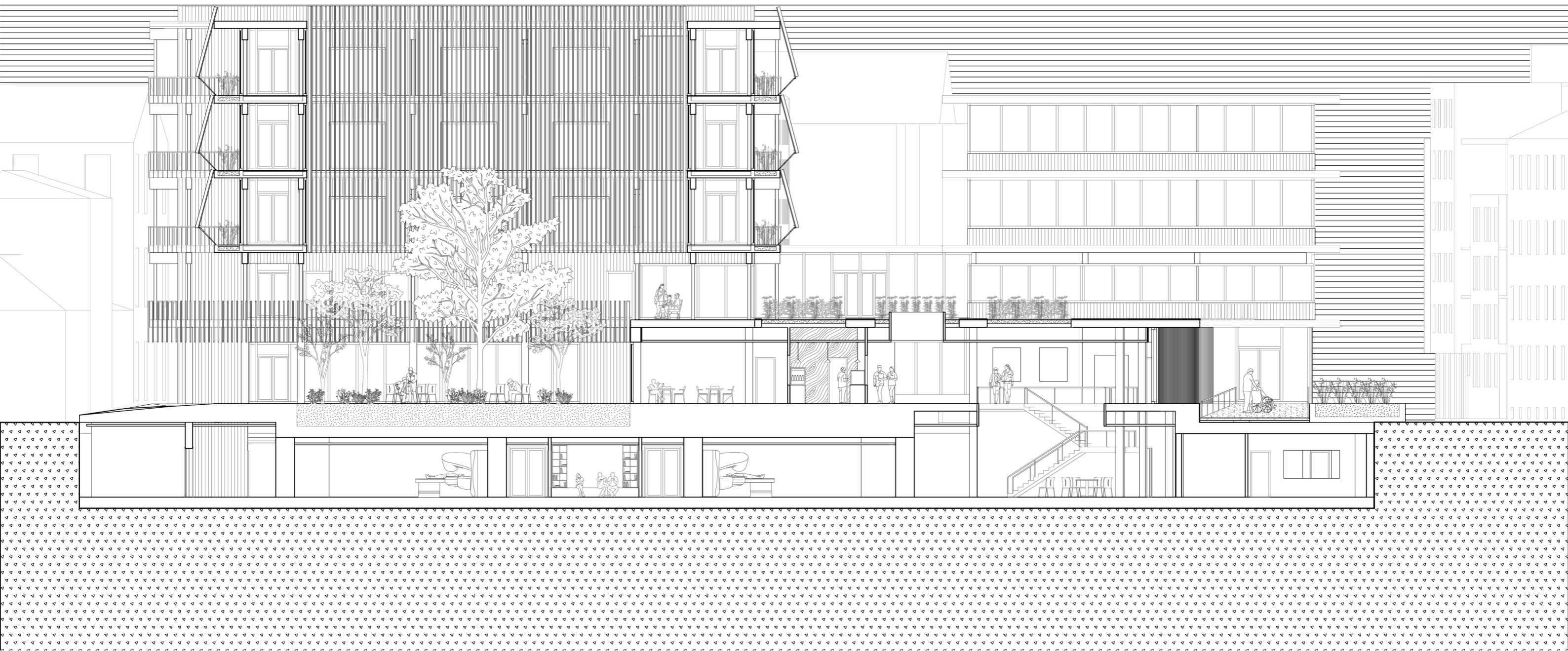
Oblique functions



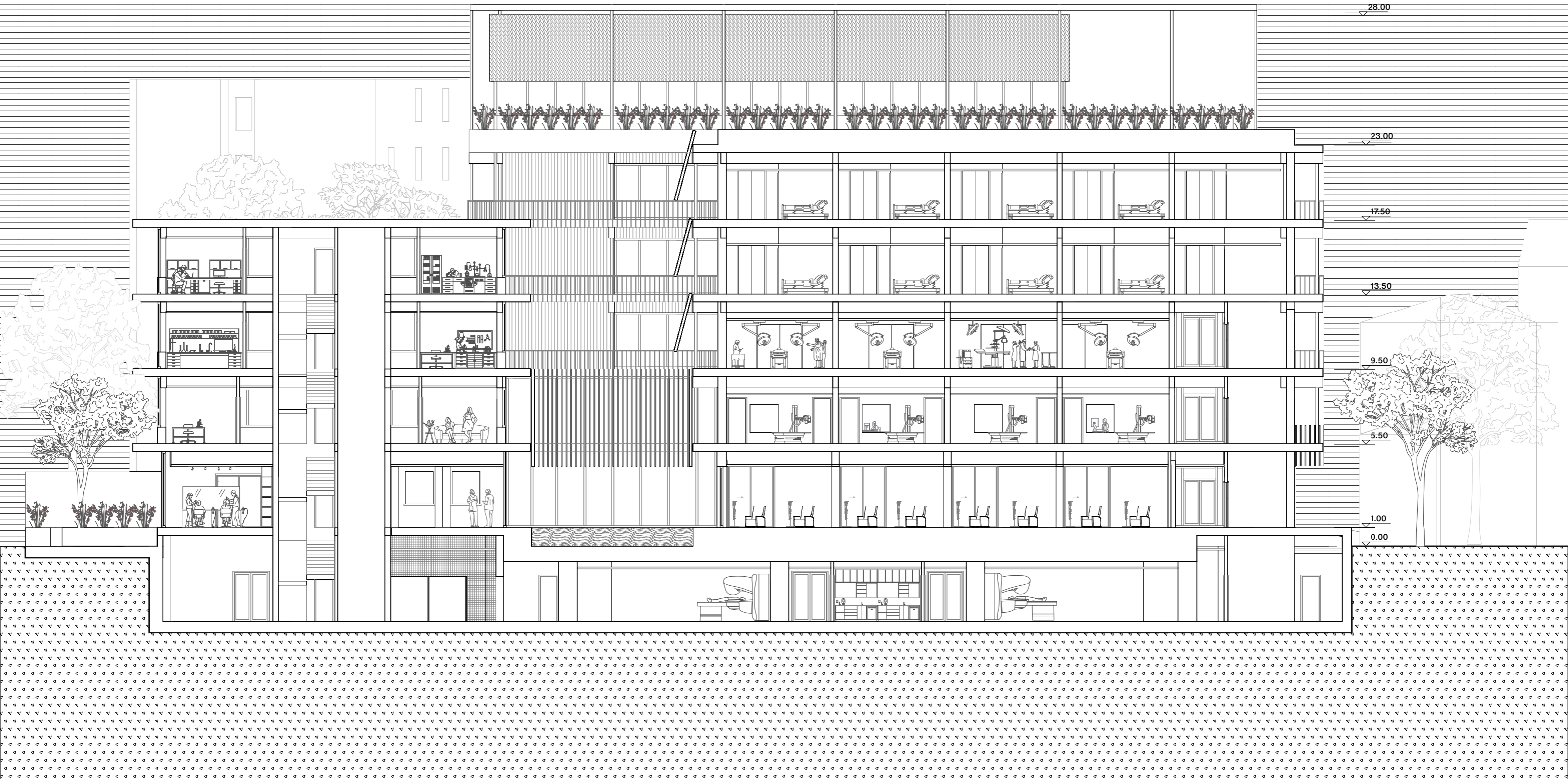
Circulation void



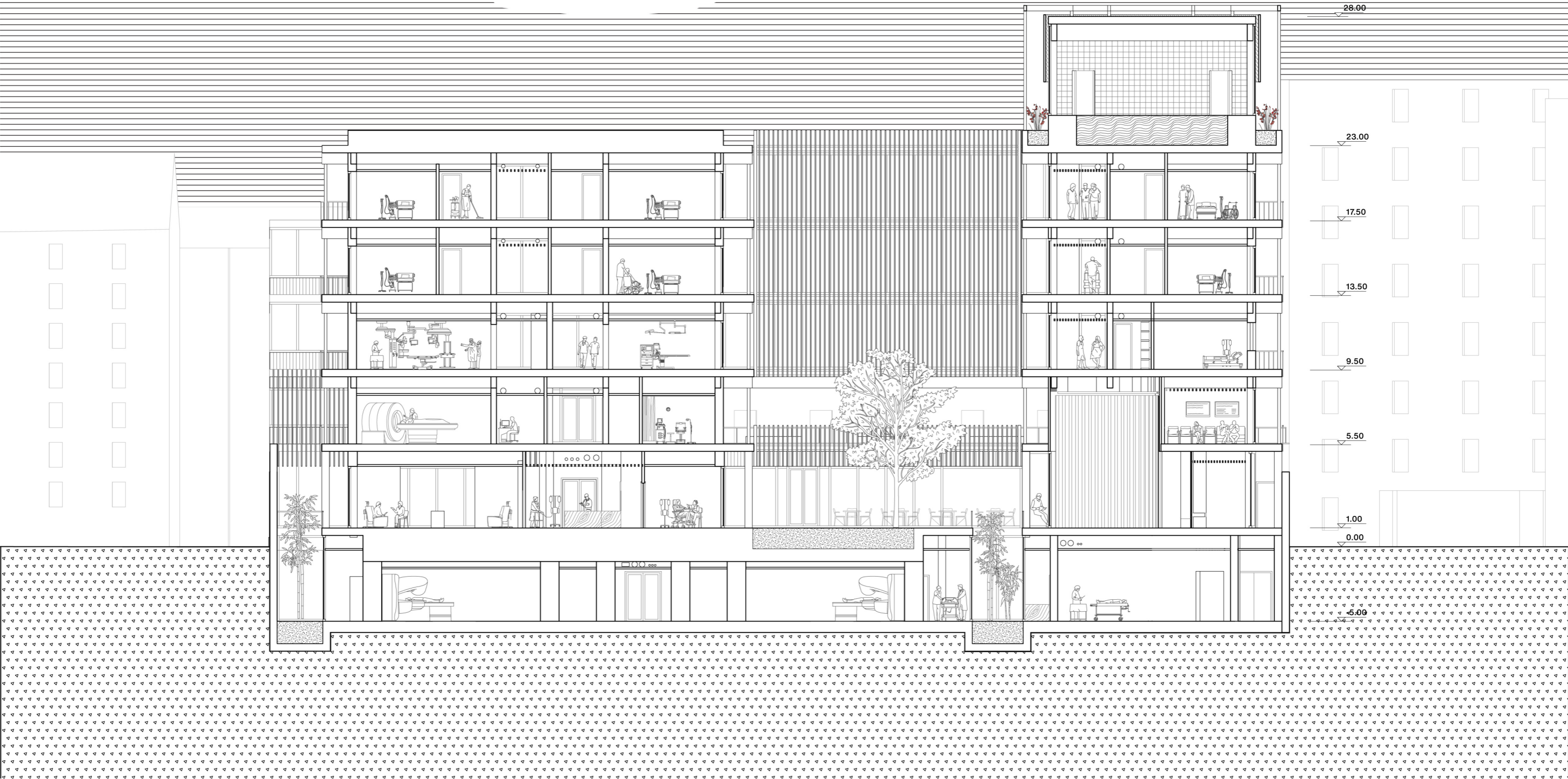
The new corridor



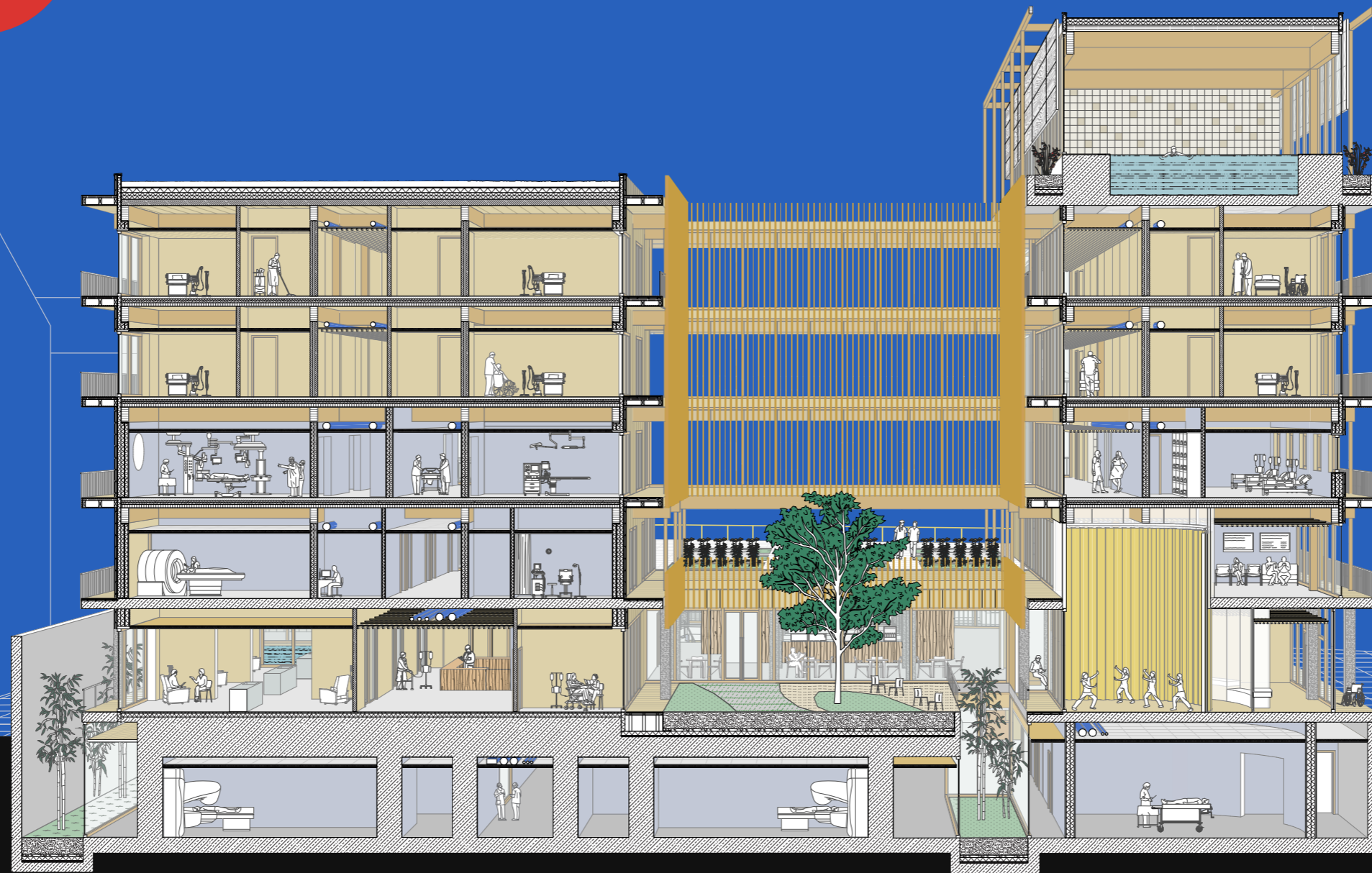
Section A-A



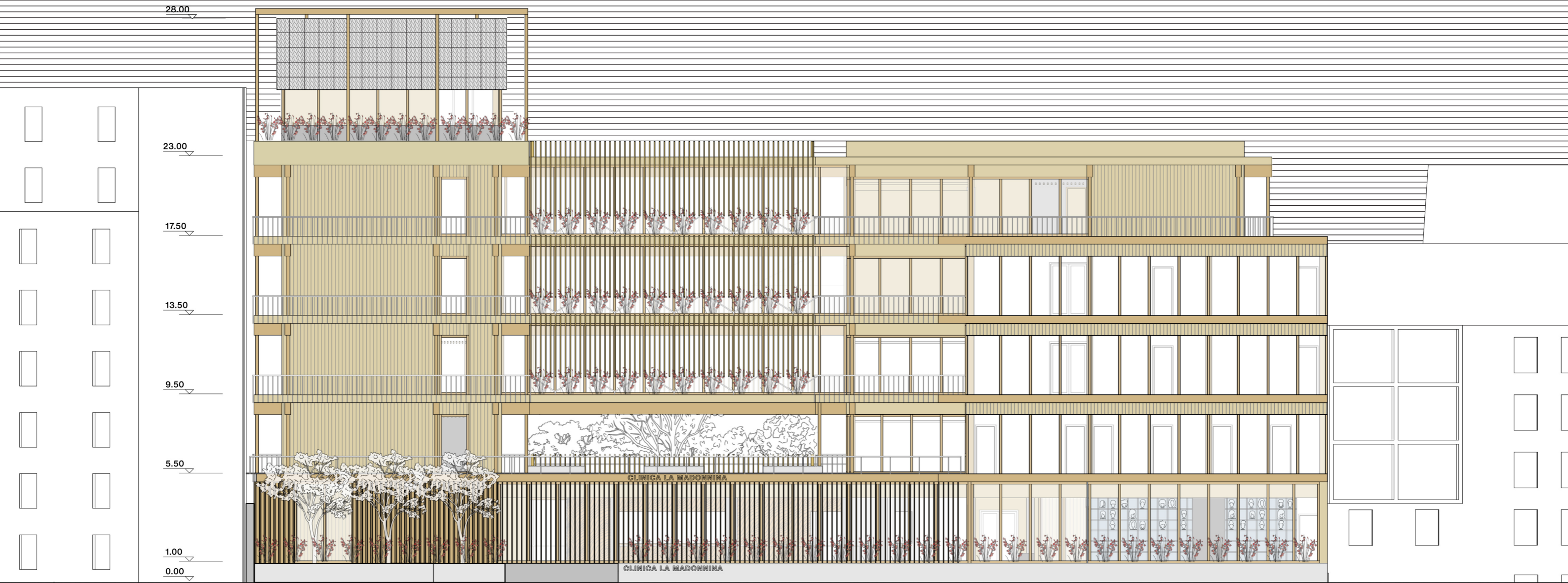
Section B-B



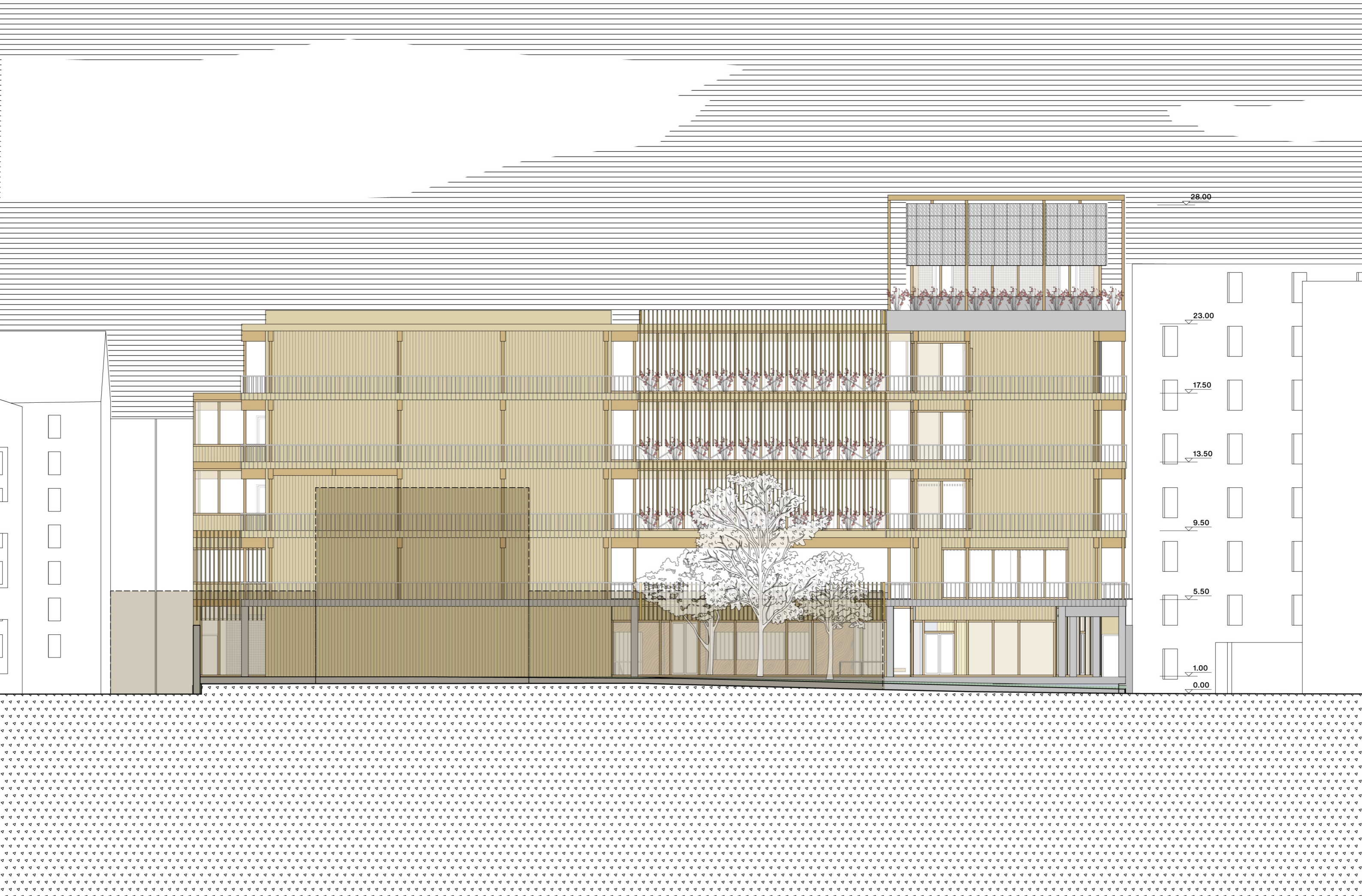
Section C-C



Section C-C



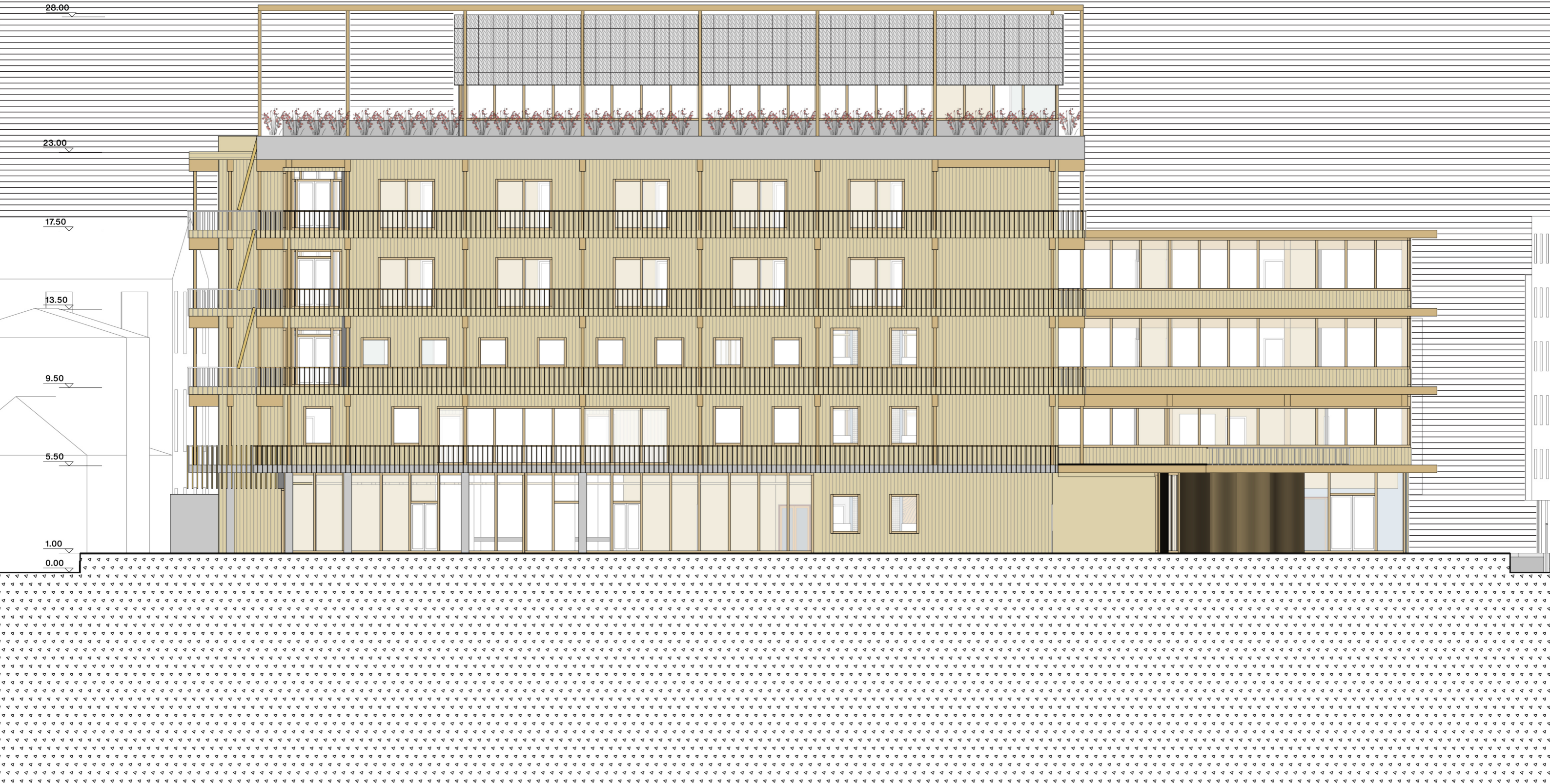
South Elevation



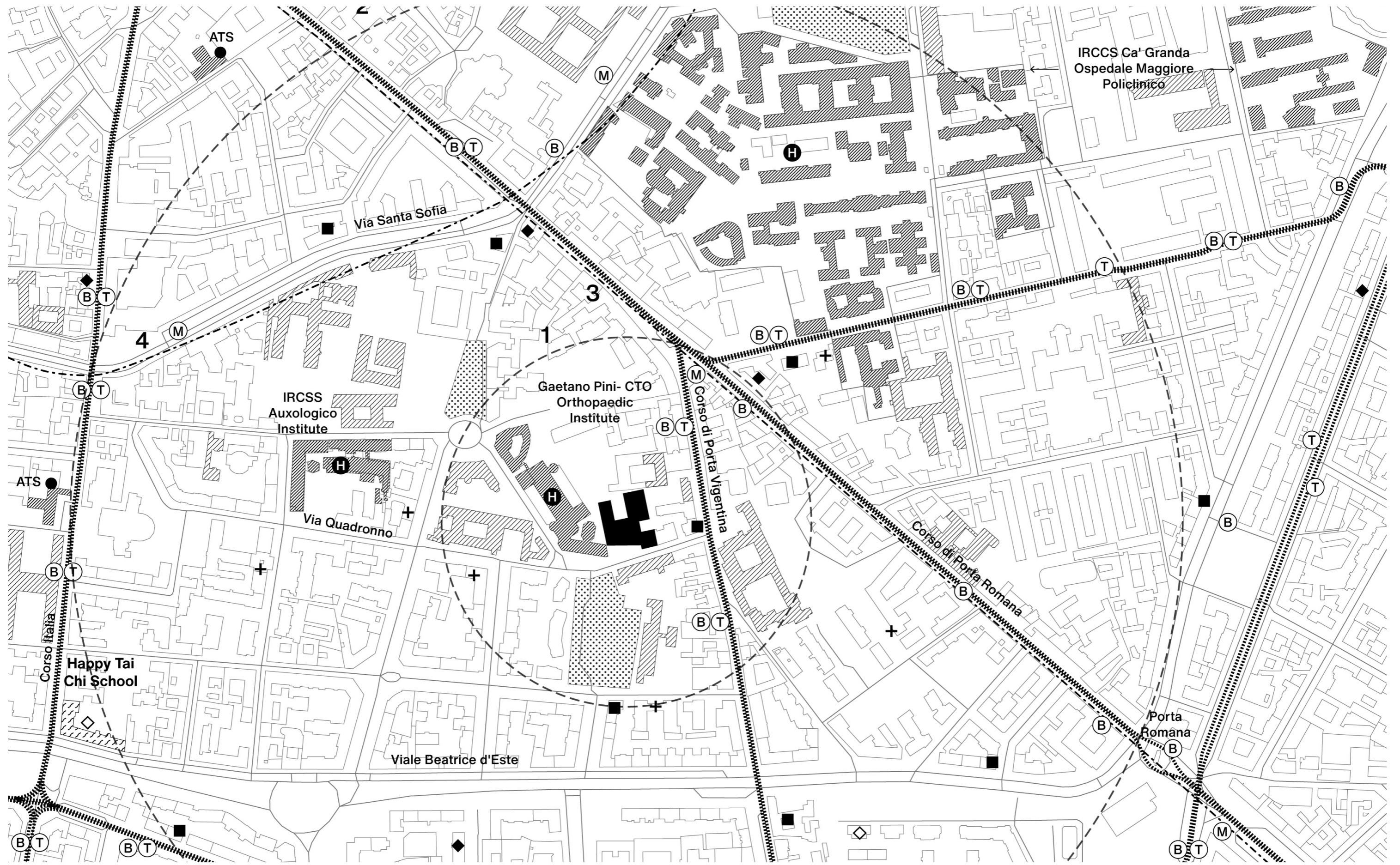
North Elevation



North Elevation



West Elevation

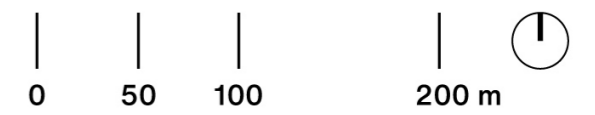


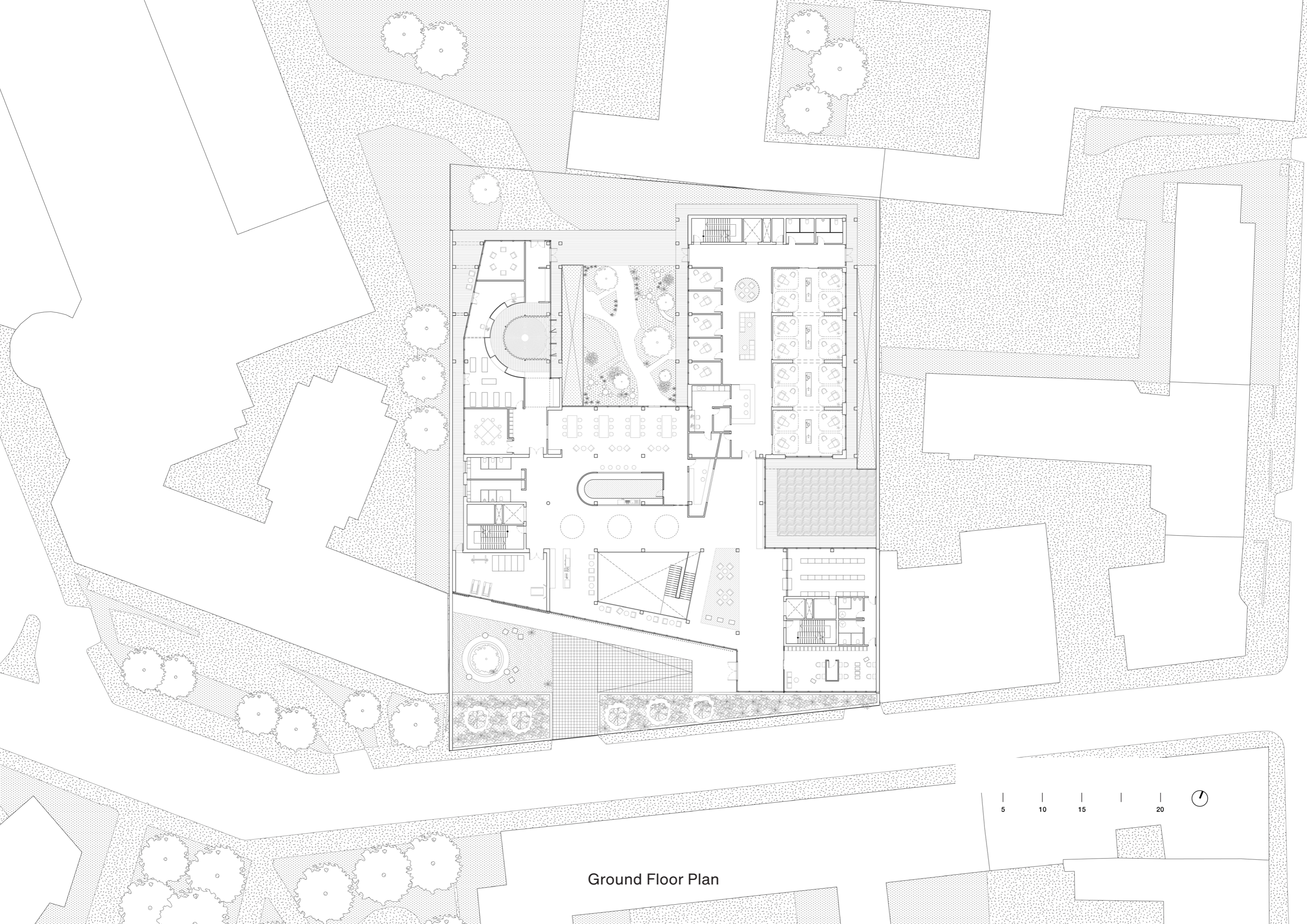
- 1 5-min walking distance (400 m)
- 2 15-minute walking distance (1,2 km)
- 3 Metro line M3
- 4 Metro line M4

- (M) (B) (T) Metro/Bus/Tram station
- ⋯ Tram line
- Commercial fronts
- Trees

- ▨ Medical-related facilities
- ▧ Sports facilities
- ⋄ Parks
- ▩ Schools

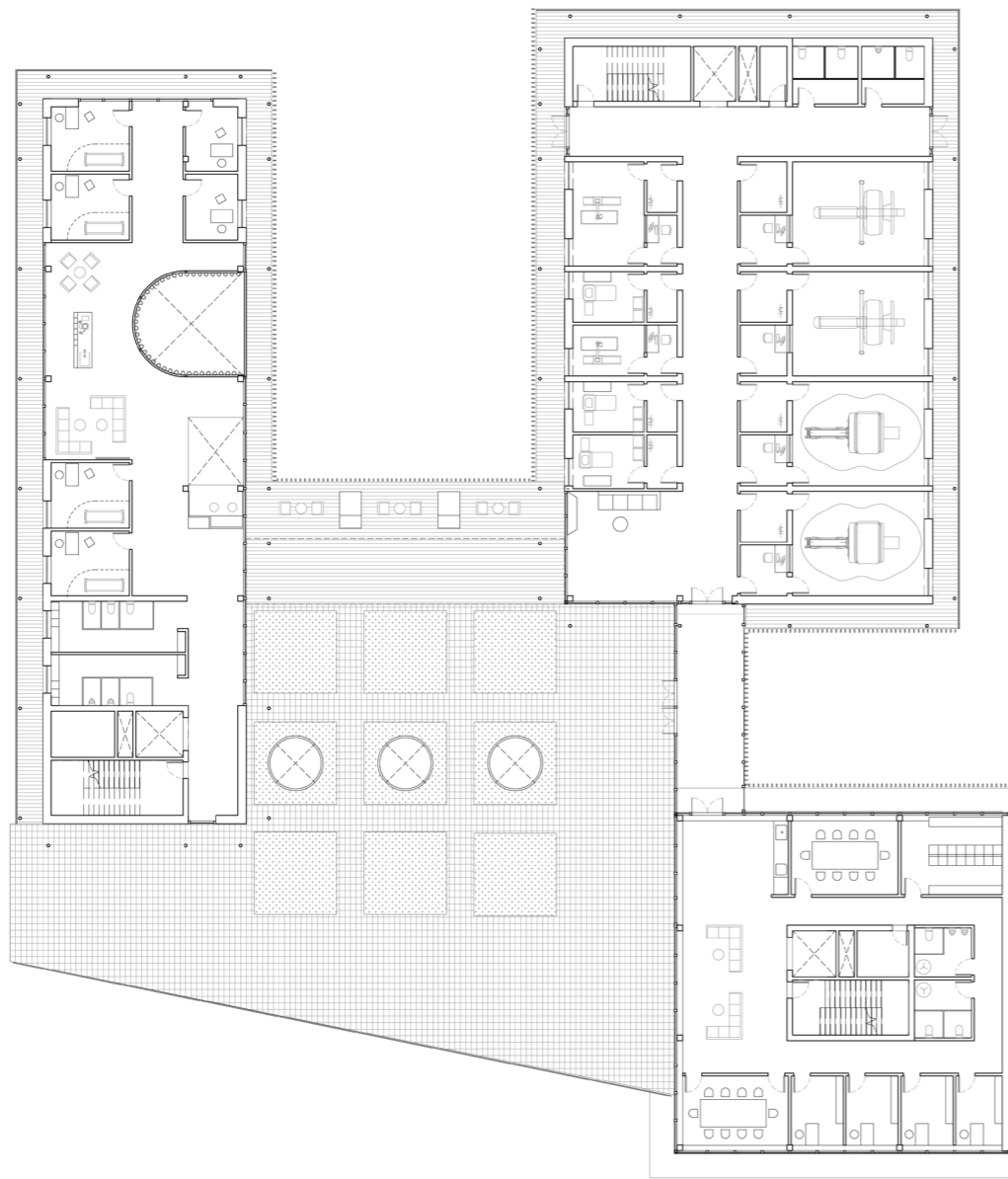
- Private polyclinic (GP)
- Public health service (ATS)
- ◆ Pharmacy
- + Rehabilitation / Physio facilities



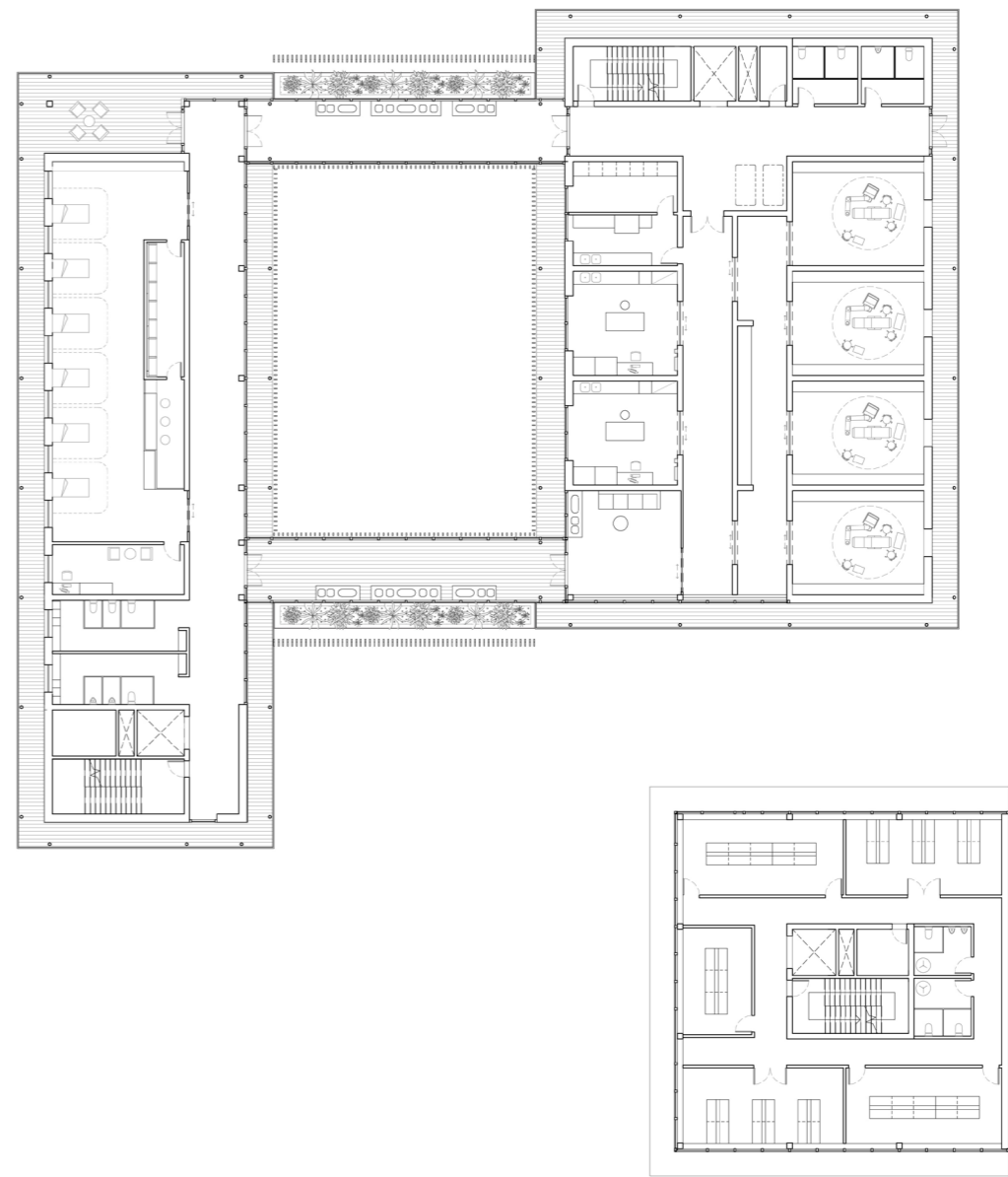
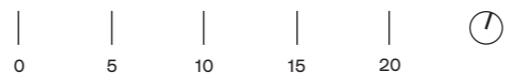


Ground Floor Plan



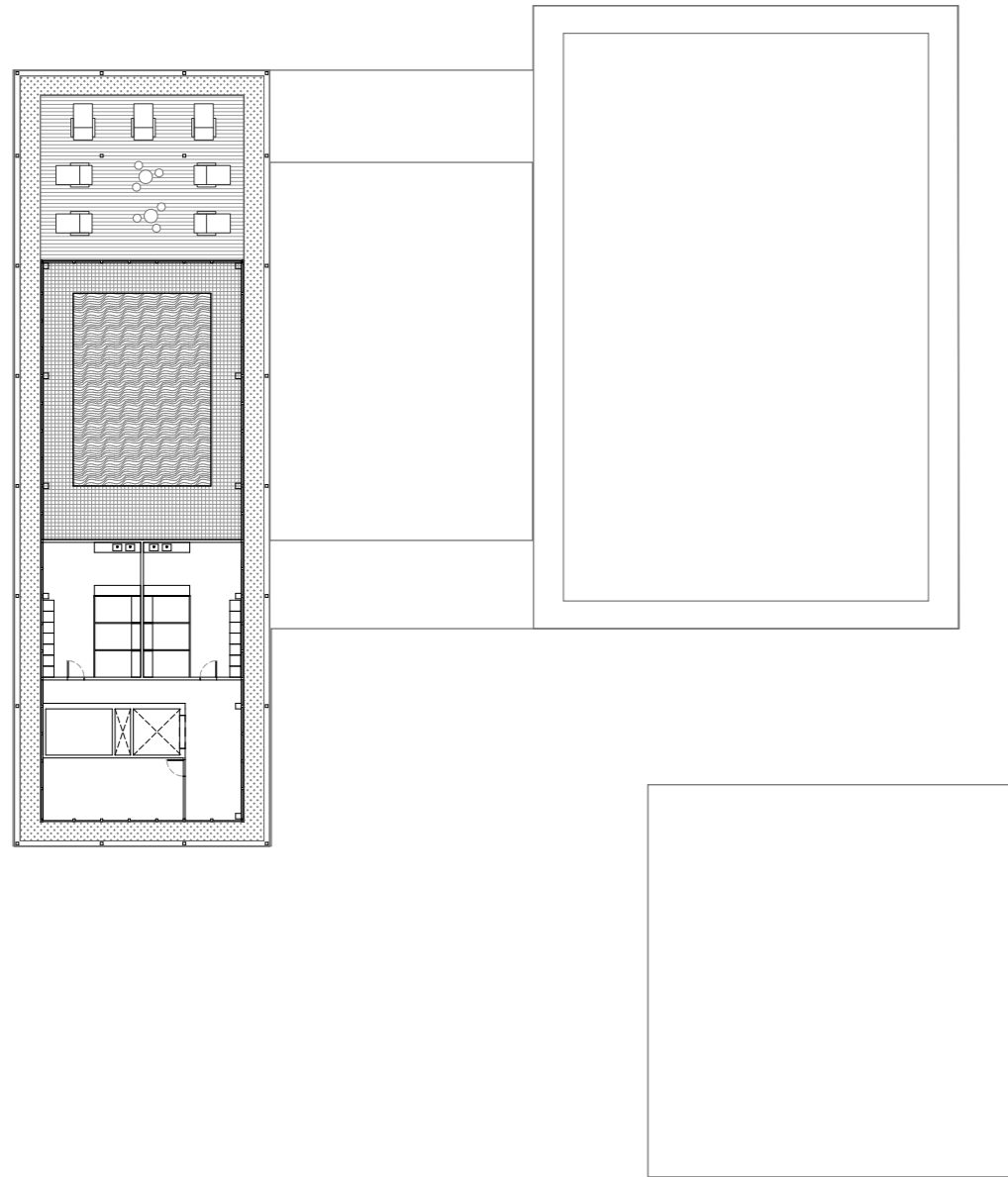


First Floor Plan

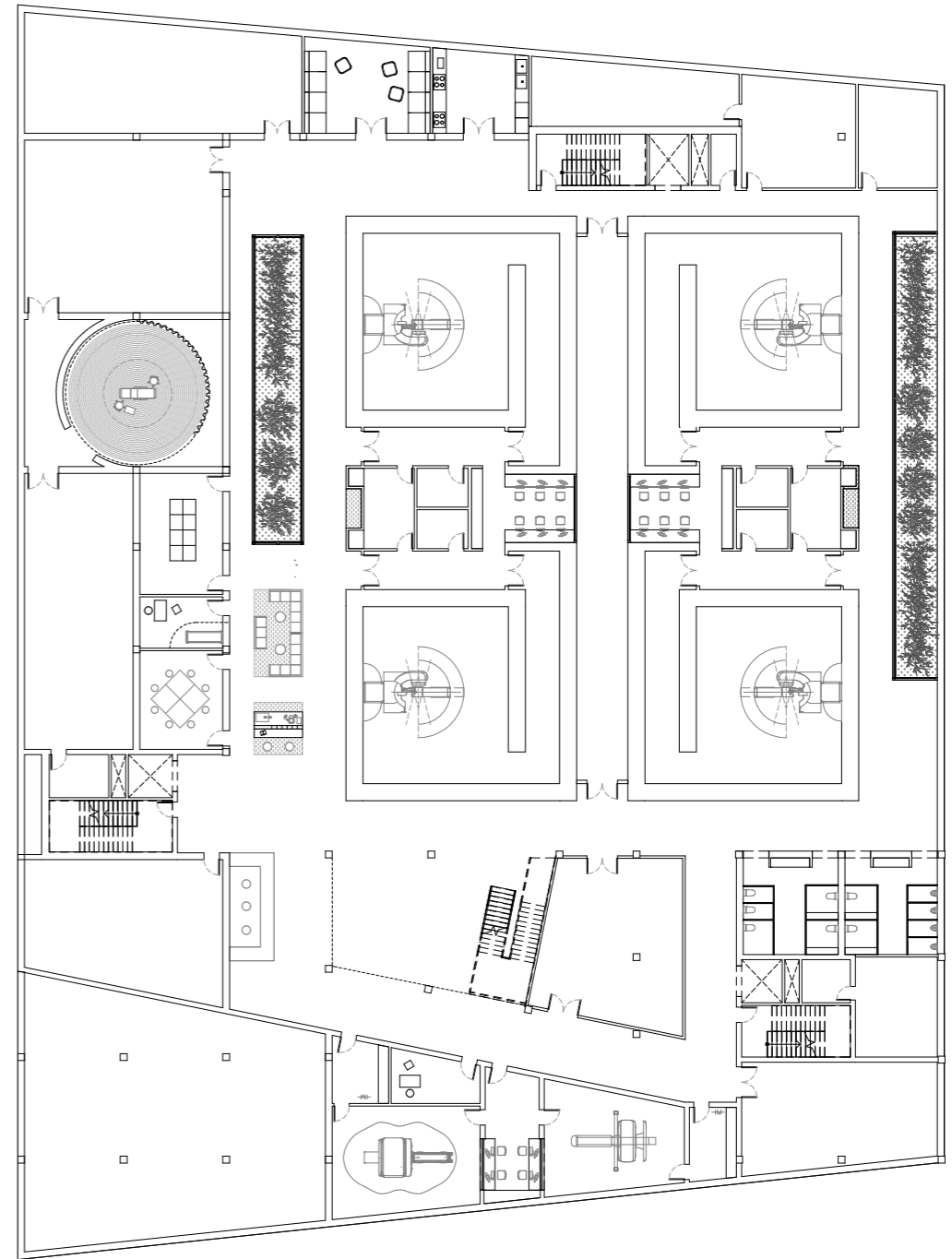
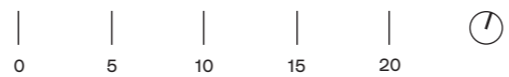


Second Floor Plan



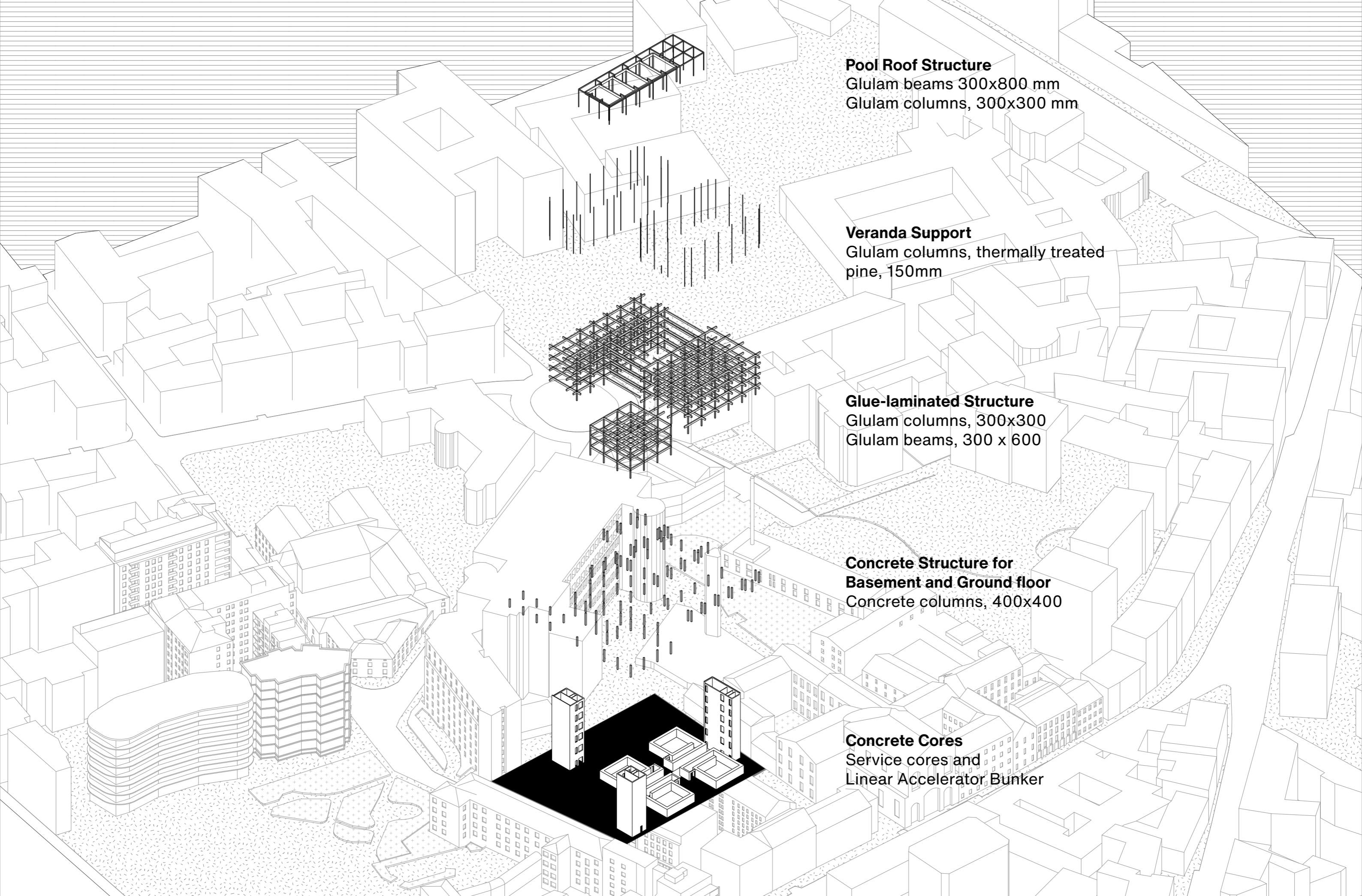


Fifth Floor Plan



Basement Floor Plan





Pool Roof Structure
Glulam beams 300x800 mm
Glulam columns, 300x300 mm

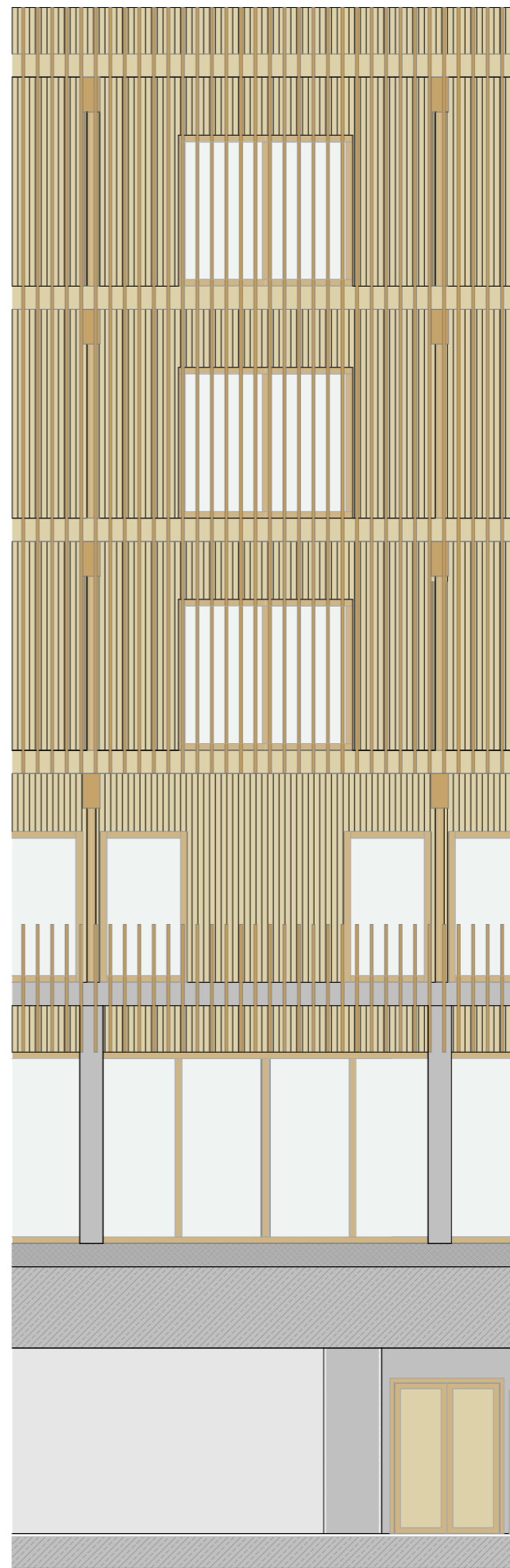
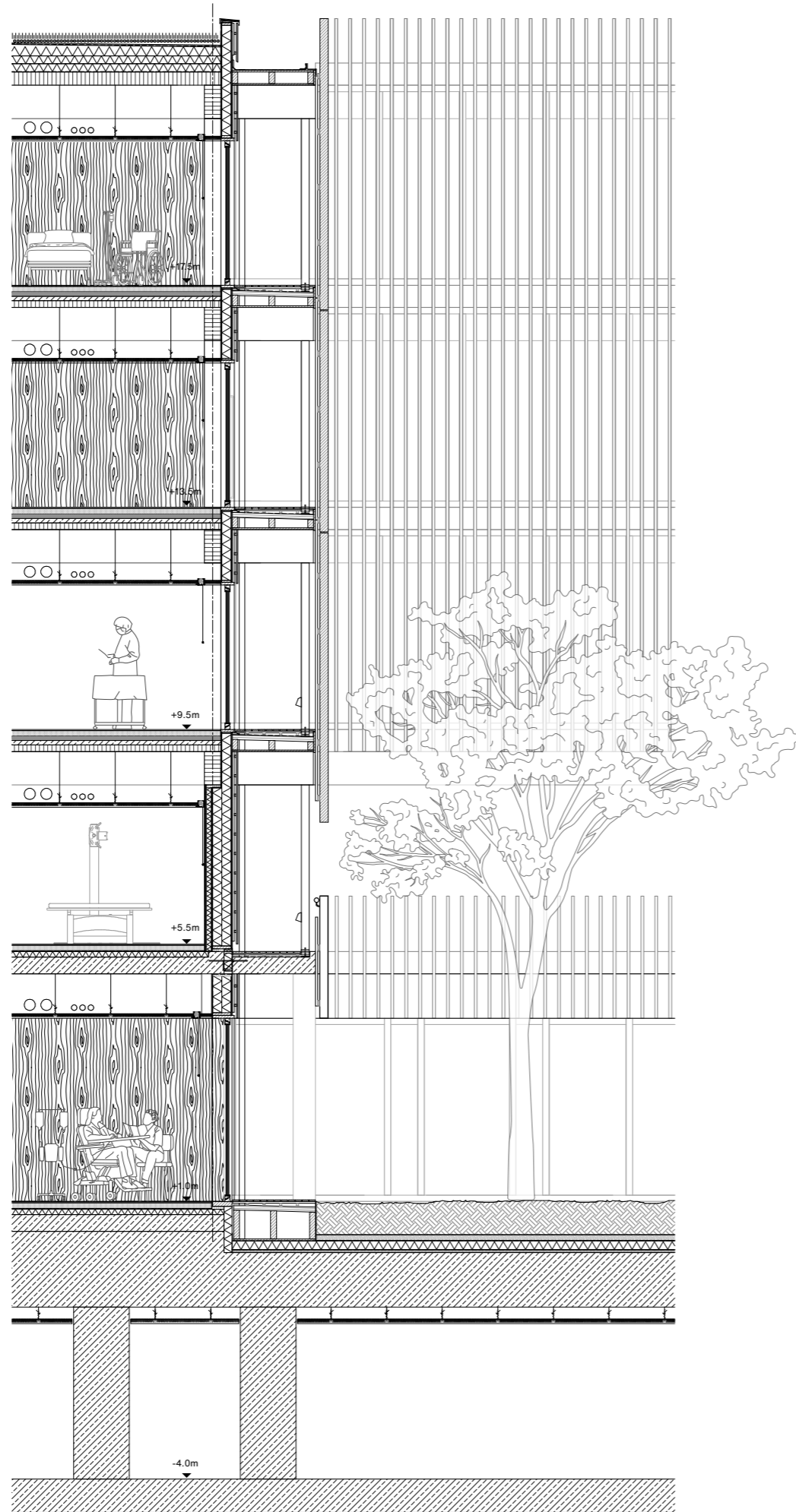
Veranda Support
Glulam columns, thermally treated
pine, 150mm

Glue-laminated Structure
Glulam columns, 300x300
Glulam beams, 300 x 600

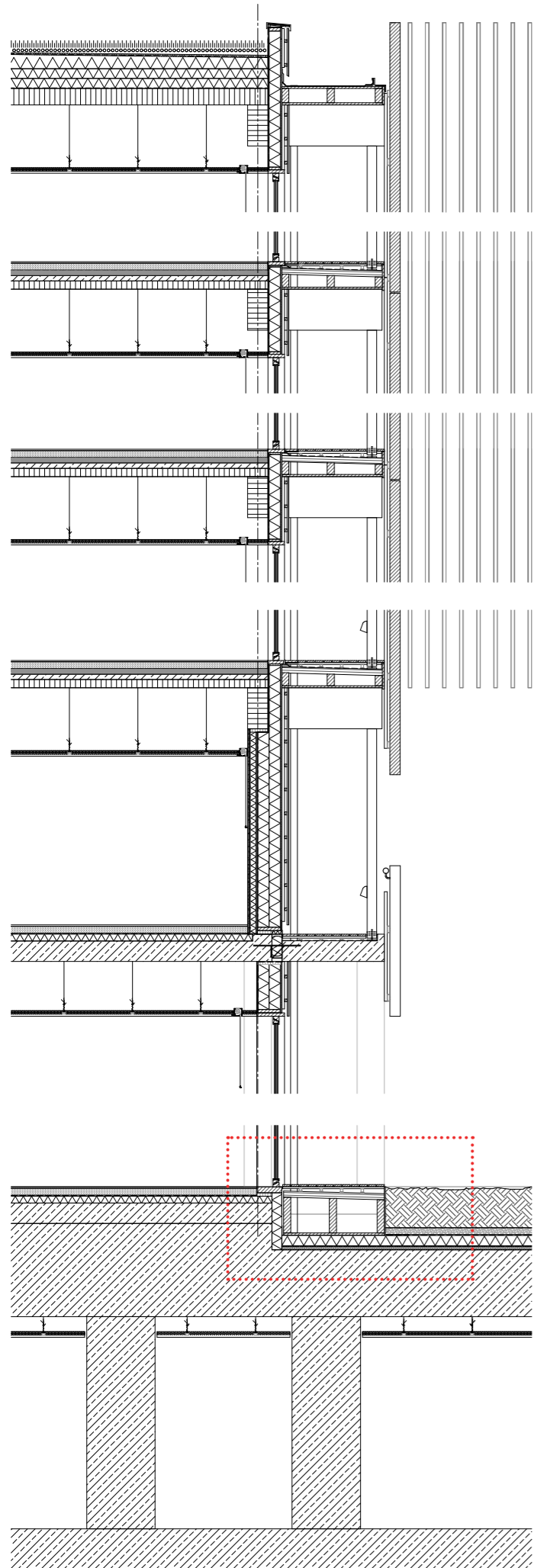
**Concrete Structure for
Basement and Ground floor**
Concrete columns, 400x400

Concrete Cores
Service cores and
Linear Accelerator Bunker

Building Structure



Facade Fragment

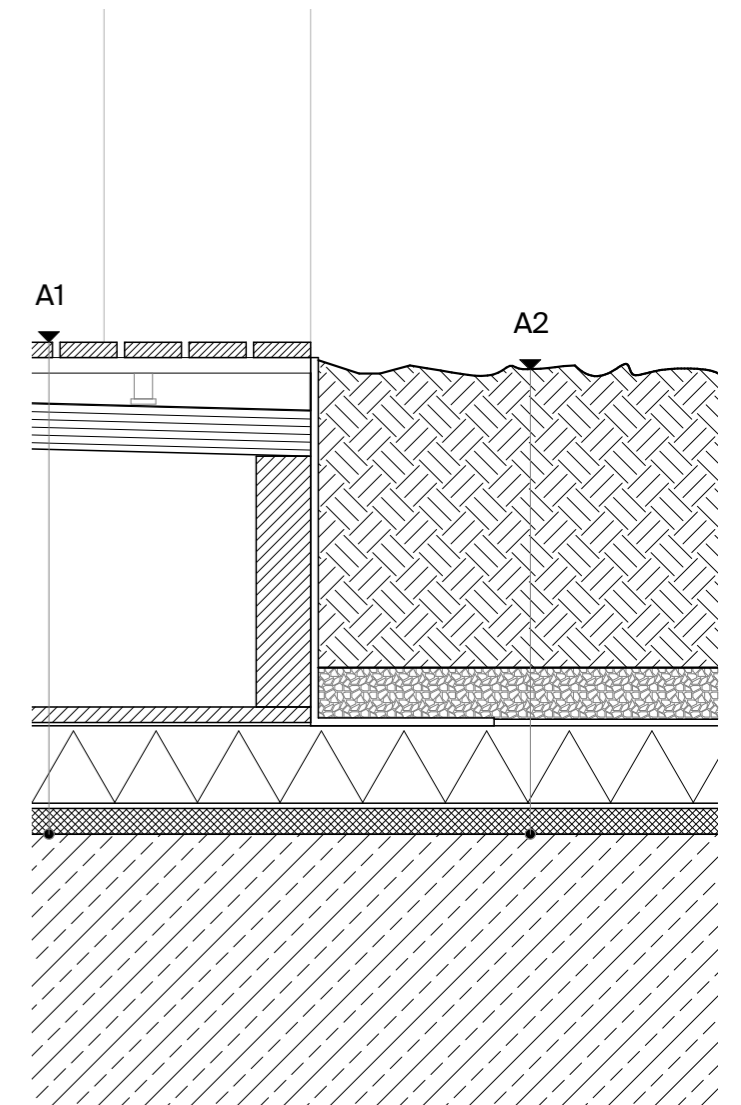
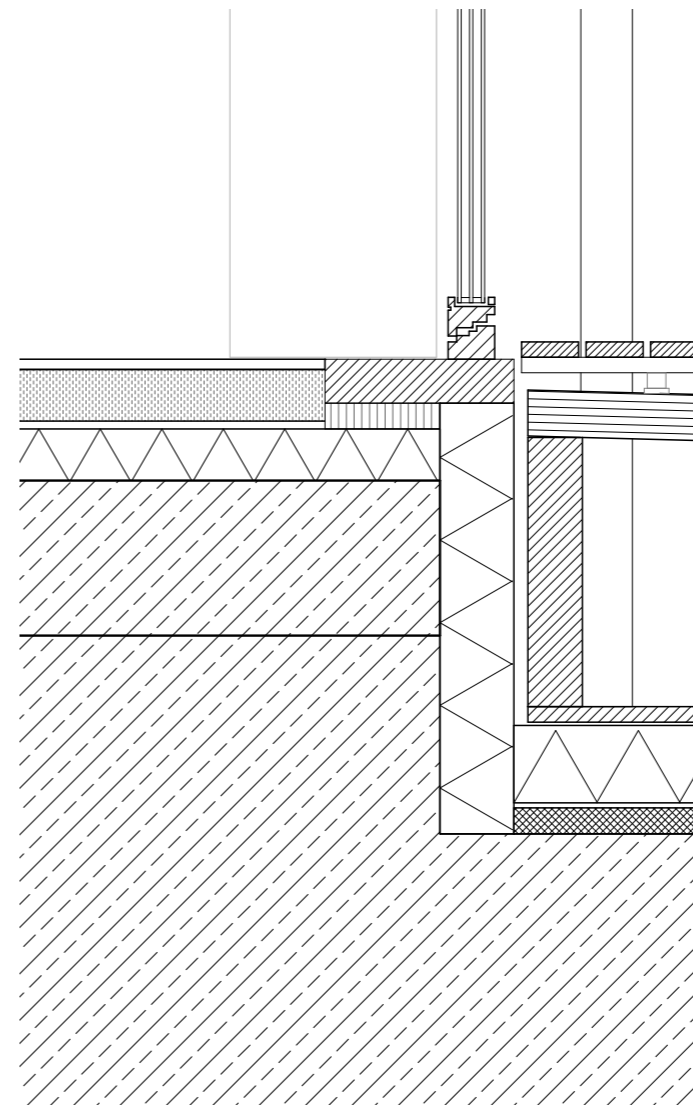


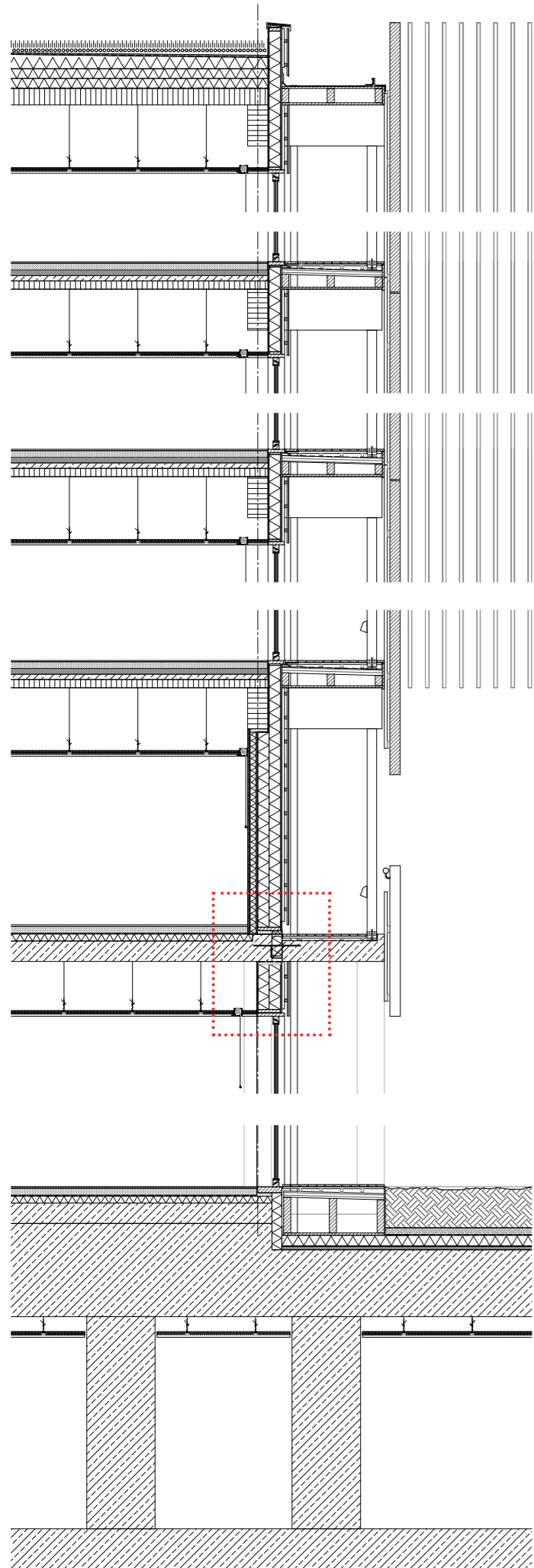
DETAIL A
A1

Boards, silver fir, pressure-treated, planed/sanded 30 mm, battens 30 mm, mitered blocks 50- 80 mm
Elastomer bed (impact sound) 20 mm
Waterproofing, plastic membrane, mechanically fastened
Glued laminated board in gradient 1.5 %
Timber blocks 50- 80 mm
Timber boarding, oak 20 mm
Geotextile membrane
Rigid thermal insulation, 150 mm
Waterproofing membrane
Protection screed 50 mm

A2

Topsoil, engineered soil 1000 mm
Drainage layer, gravel, 100 mm
Geotextile membrane
Rigid thermal insulation, 150 mm
Waterproofing membrane
Protection screed 50 mm





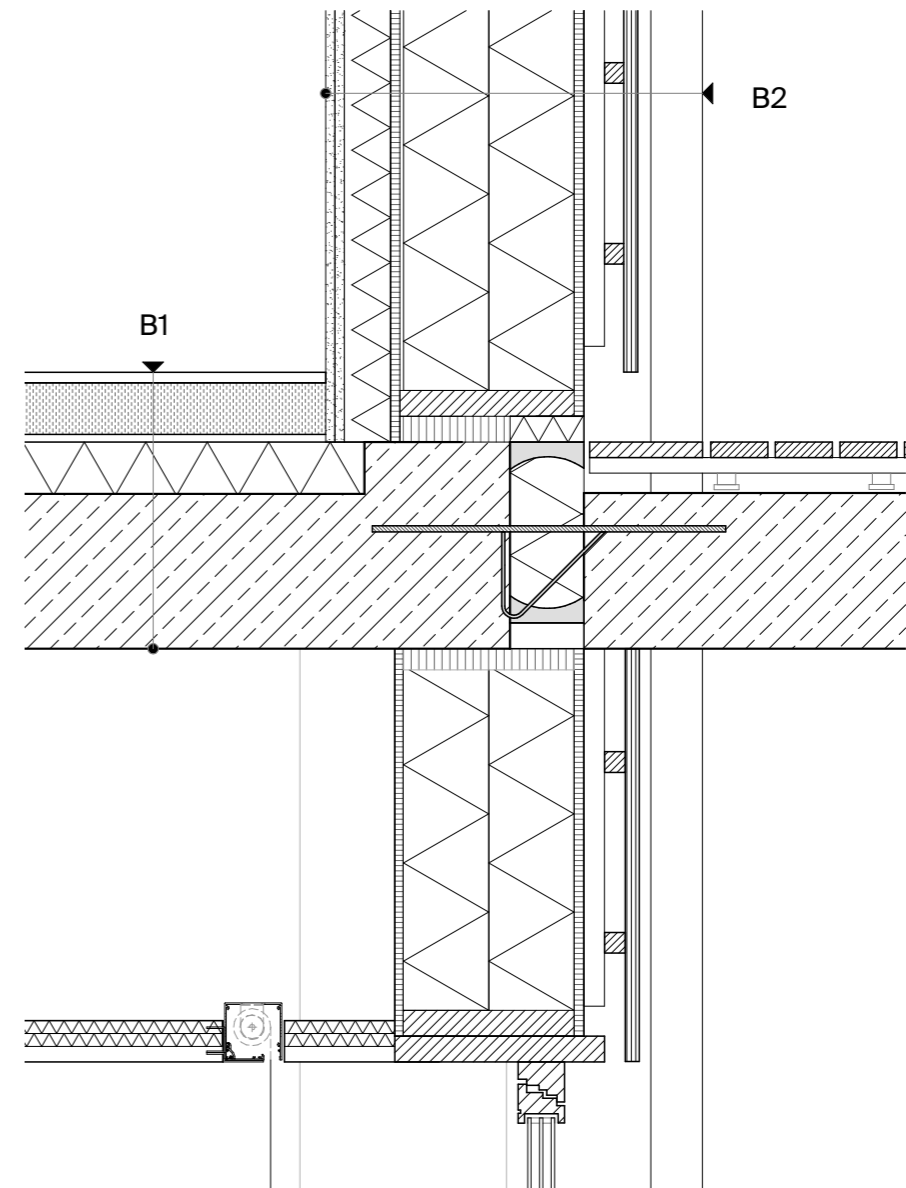
DETAIL B

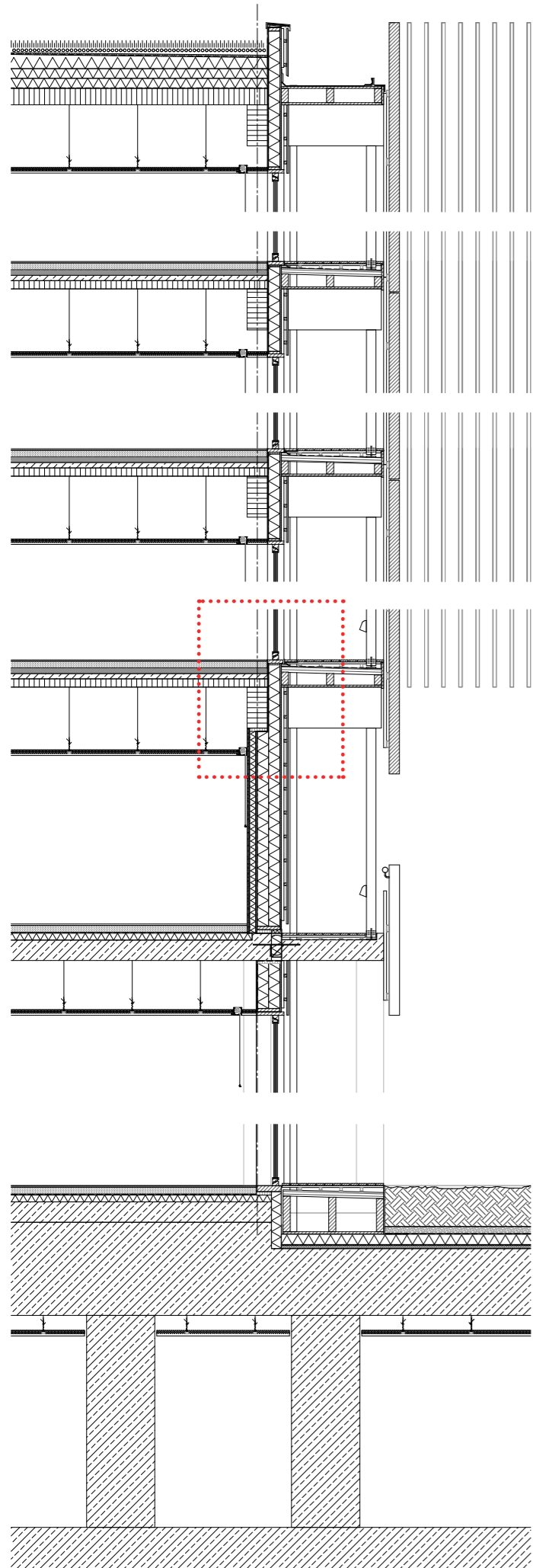
B1 - FLOOR

Flooring, linoleum, 20mm
 Anhydride screed, 50 mm
 PE foil separating layer
 Mineral fibre footfall sound insulation, 100 mm
 Concrete slab 100mm
 Schöck Isokorb® thermal break
 Installation cavity 710mm under slab
 Suspended ceiling:
 Suspended battens with spring clamps, 25 mm
 Cavity insulation between battens, 50 mm
 Wood panel, 40mm

B2 - FACADE

Alternate notches boards, thermally treated pine wood. 30 mm
 Horizontal battens 40/60 mm
 Vertical battens 40/60 mm
 Chipboard, cement-bonded with glued joints 18 mm
 Frame construction, glulam timber 59/340 mm, inbetween
 thermal insulation, mineral wool 340 mm
 Air resistance level, vapour barrier
 OSB panel with glued joints (vapour barrier) 18 mm
 Thermal insulation, mineral wool (installation) 75 mm
 Interior finish:
 Surgery: Plasterboard, 2x 19mm
 Else: Parapet backboard, chipboard, oak, veneered 19 mm

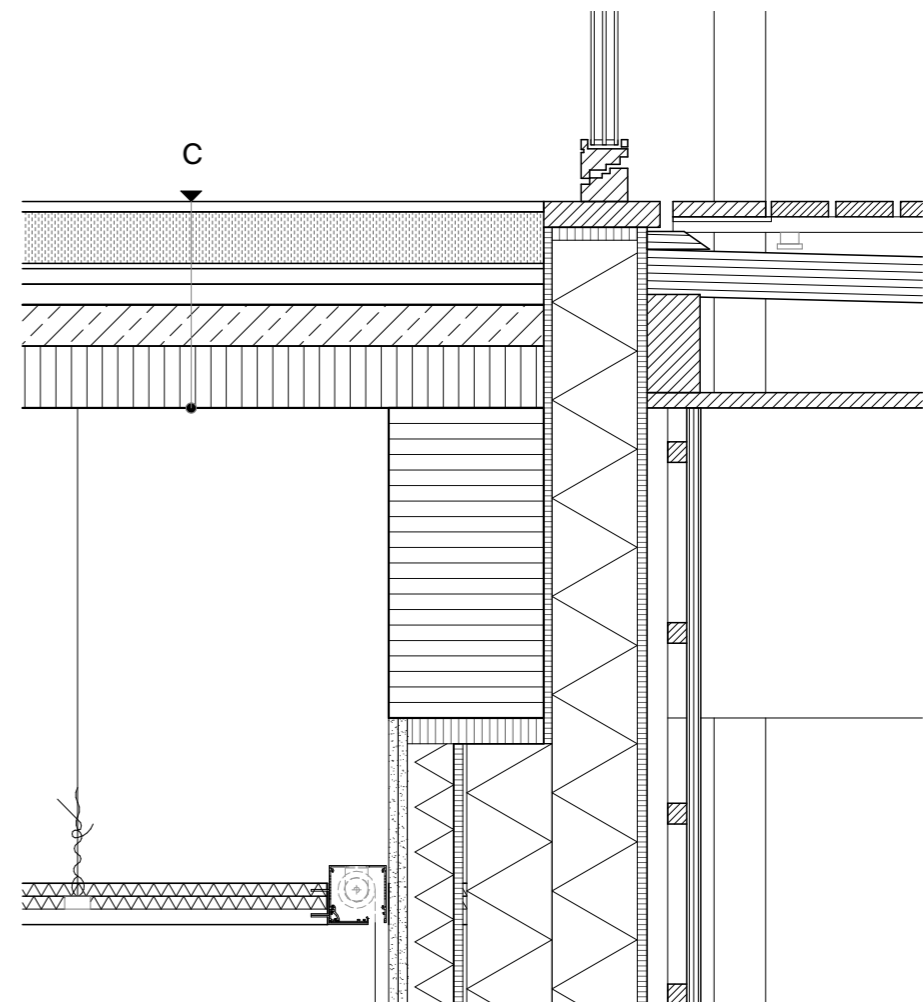


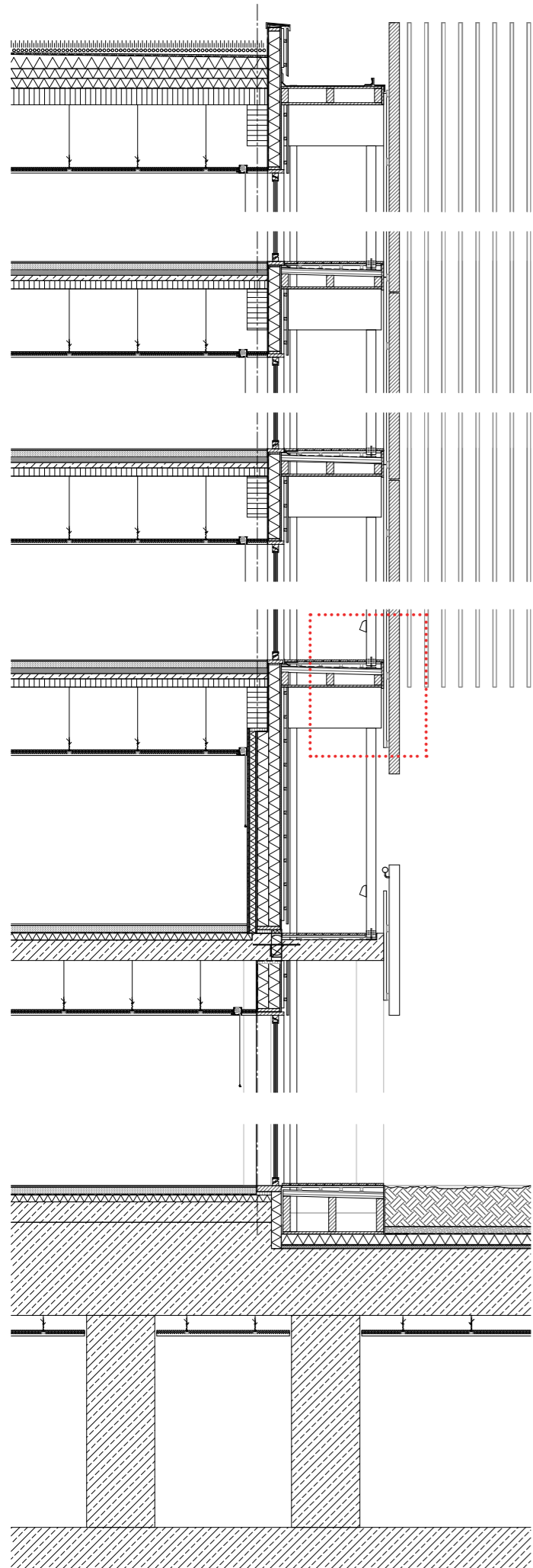


DETAIL C

C - FLOOR (COMPOSITE CONCRETE-TIMBER)

- Flooring, parquet, pine, 20mm
- Anhydride screed, 50 mm
- PE foil separating layer
- Mineral wool footfall sound insulation, 30 mm
- Additional mineral fibre insulation, 40 mm
- Prefabricated composite timber-concrete (CTC) ceiling, joined with pincel to glulam structure:
- Concrete top layer, 80mm
- Dowel laminated timber, C24 120mm
- Installation cavity 710mm under slab
- Suspended ceiling:
- Suspended battens with spring clamps 25 mm
- Cavity insulation between battens 50 mm
- Acoustic panels, white painted, 40mm





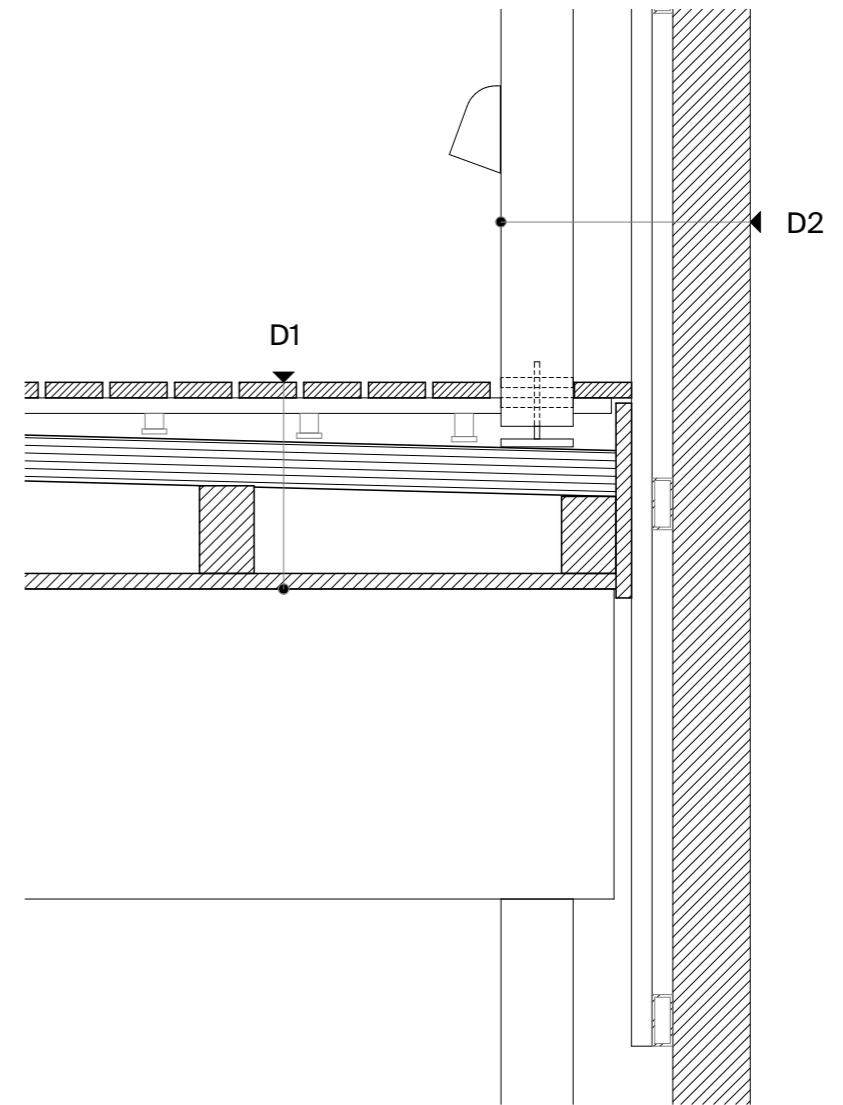
DETAIL D

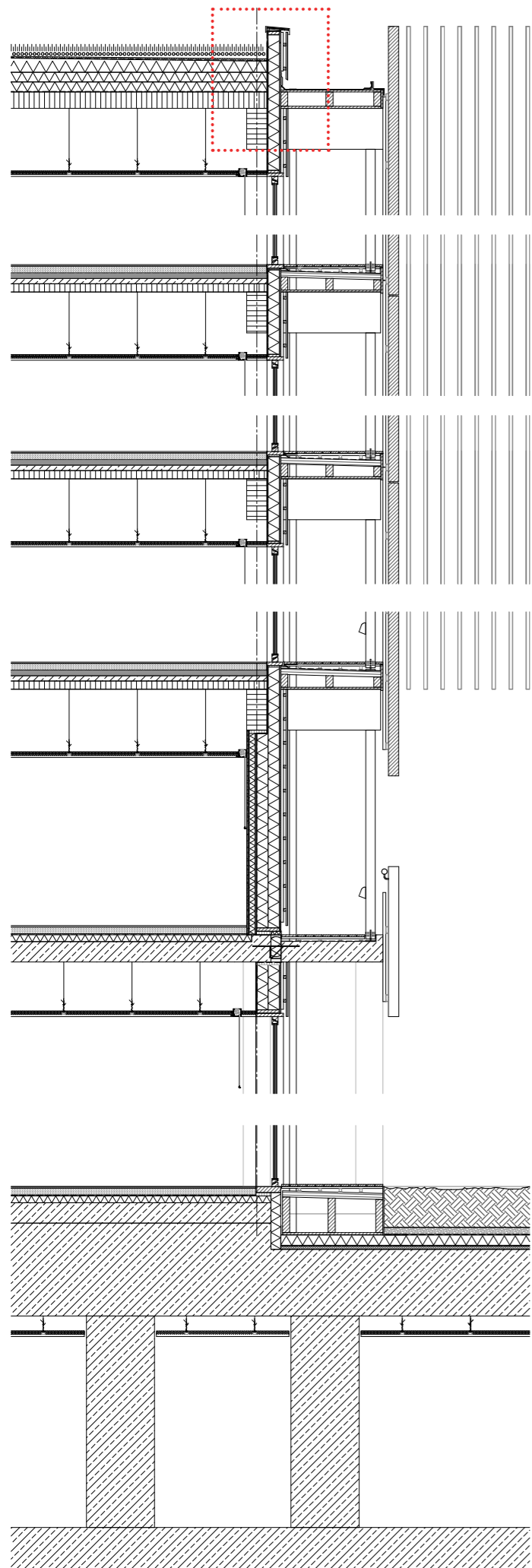
D1 - FLOOR STRUCTURE, VERANDA, 3rd-5th storey

Boards, silver fir, pressure-treated, planed/sanded 30 mm, battens 30 mm, mitered blocks 50- 80 mm
 Elastomer bed (impact sound) 20 mm
 Waterproofing, plastic membrane, mechanically fastened
 Glued laminated board in gradient 1.5 %
 Timber boarding, oak 20 mm

D2 - VERTICAL SUPPORT, VERANDA

Vertical wooden slats, motorized control, 150x40mm
 Glue-laminated column, round section, thermally treated pine, 150mm, reversible steel knife plate connector.





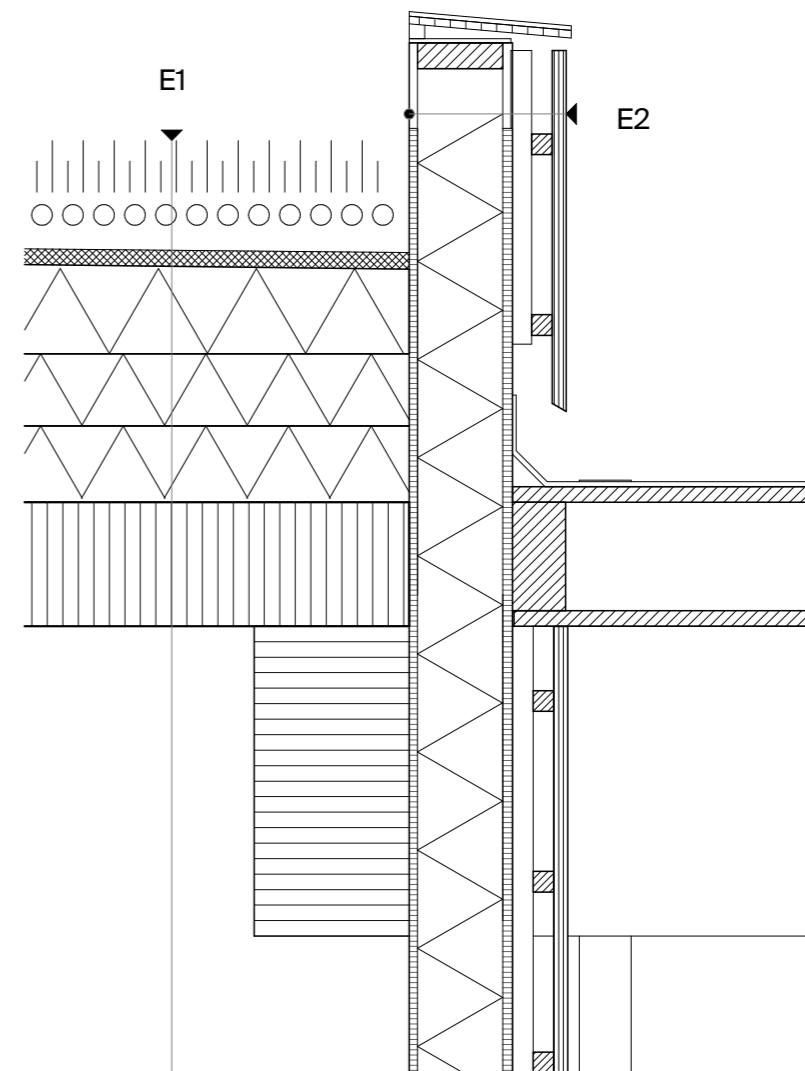
DETAIL E

E1 - ROOF

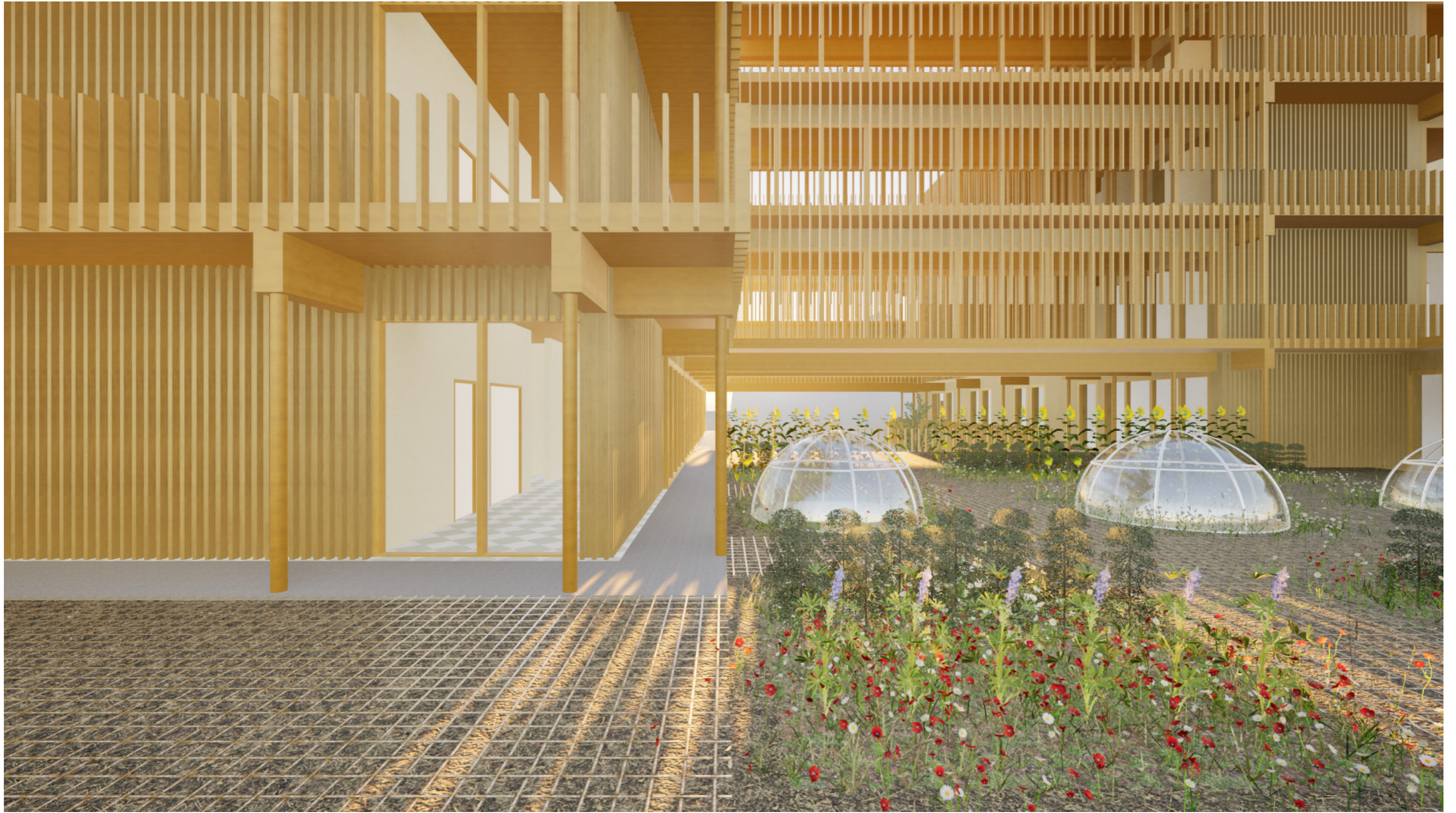
- Extensive vegetation 100 mm
- Roof waterproofing
- Thermal insulation EPS in gradient 10 -140 mm
- Thermal insulation EPS 140 mm x 2
- Vapour barrier
- Cross-laminated timber roof ceiling, 7-layer, 240mm
- Installation cavity 600-700mm for medical equipments (var.)
- Suspended ceiling:
- Suspended battens with spring clamps 25 mm
- Cavity insulation between battens 50 mm
- Wood ceiling panel, oak

E2 - PARAPET

- Timber boarding 30 mm
- Battens 40/40 mm, counter battens 40/40 mm
- Wind seal: paper, gypsum fibreboard 18 mm
- Timber structure with thermal insulation, mineral wool 170 mm
- Vapour barrier
- OSB panel 18 mm, roof waterproofing







Four-season Flower Garden



Chemotherapy Infusion Bay



