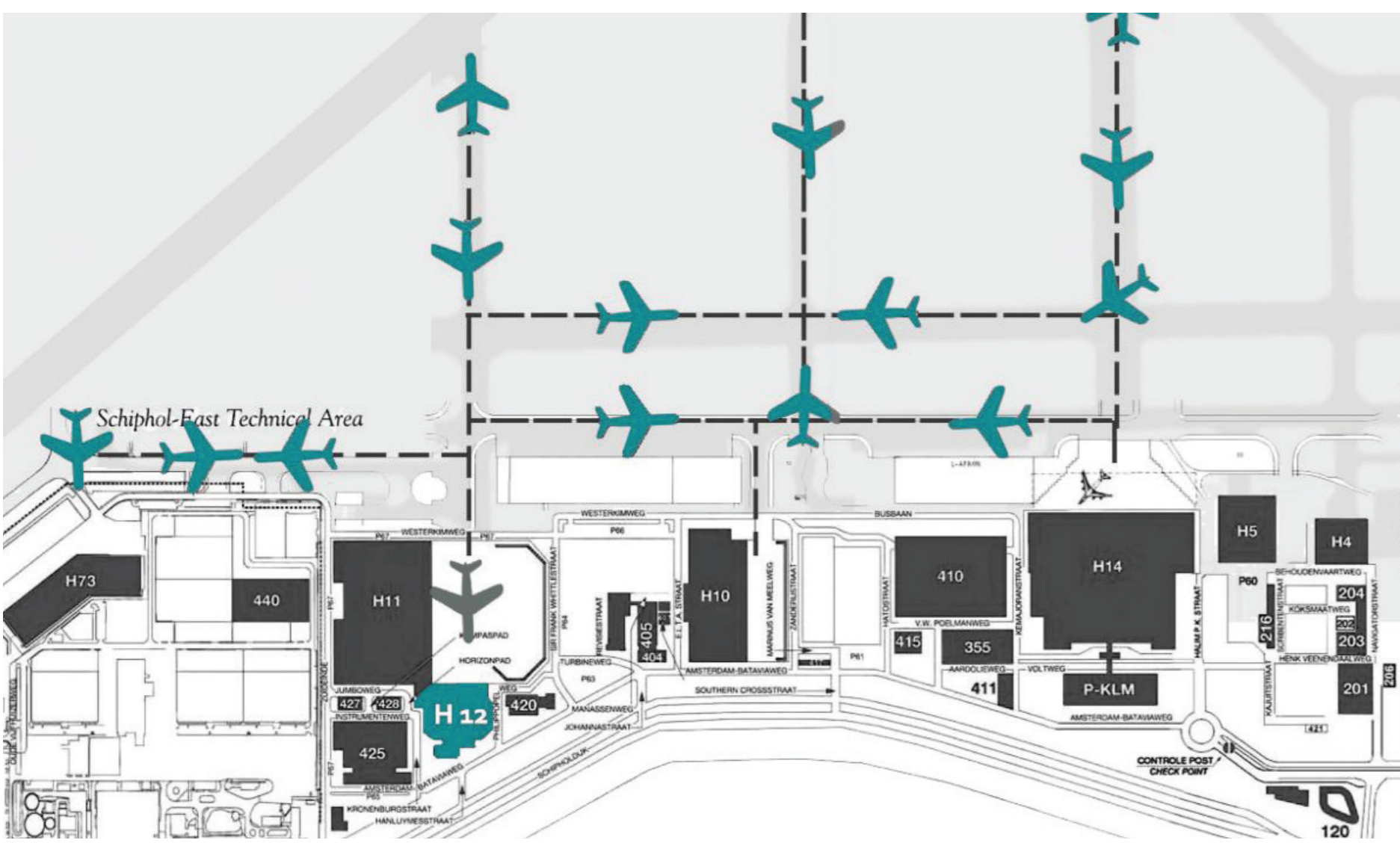
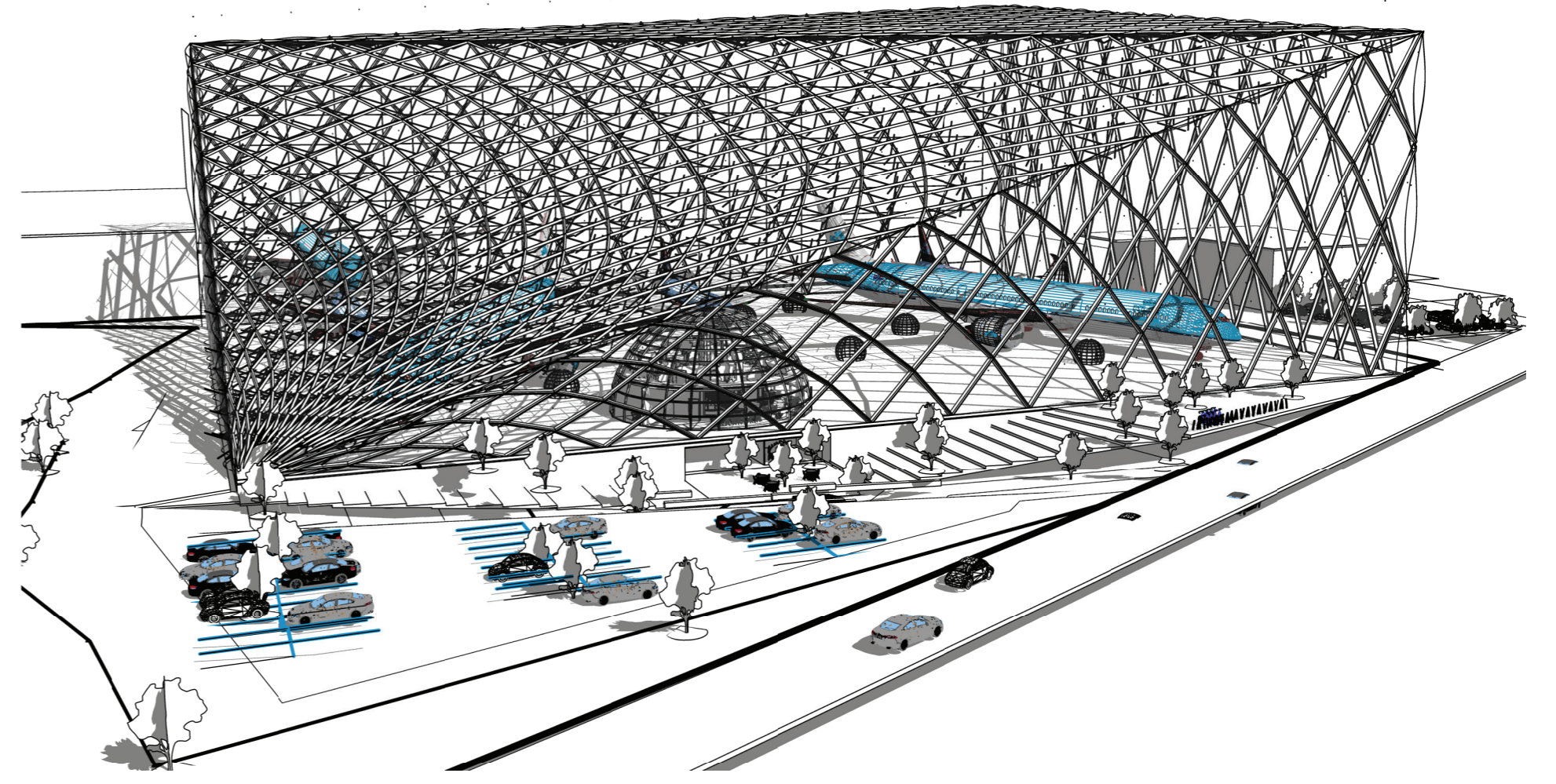


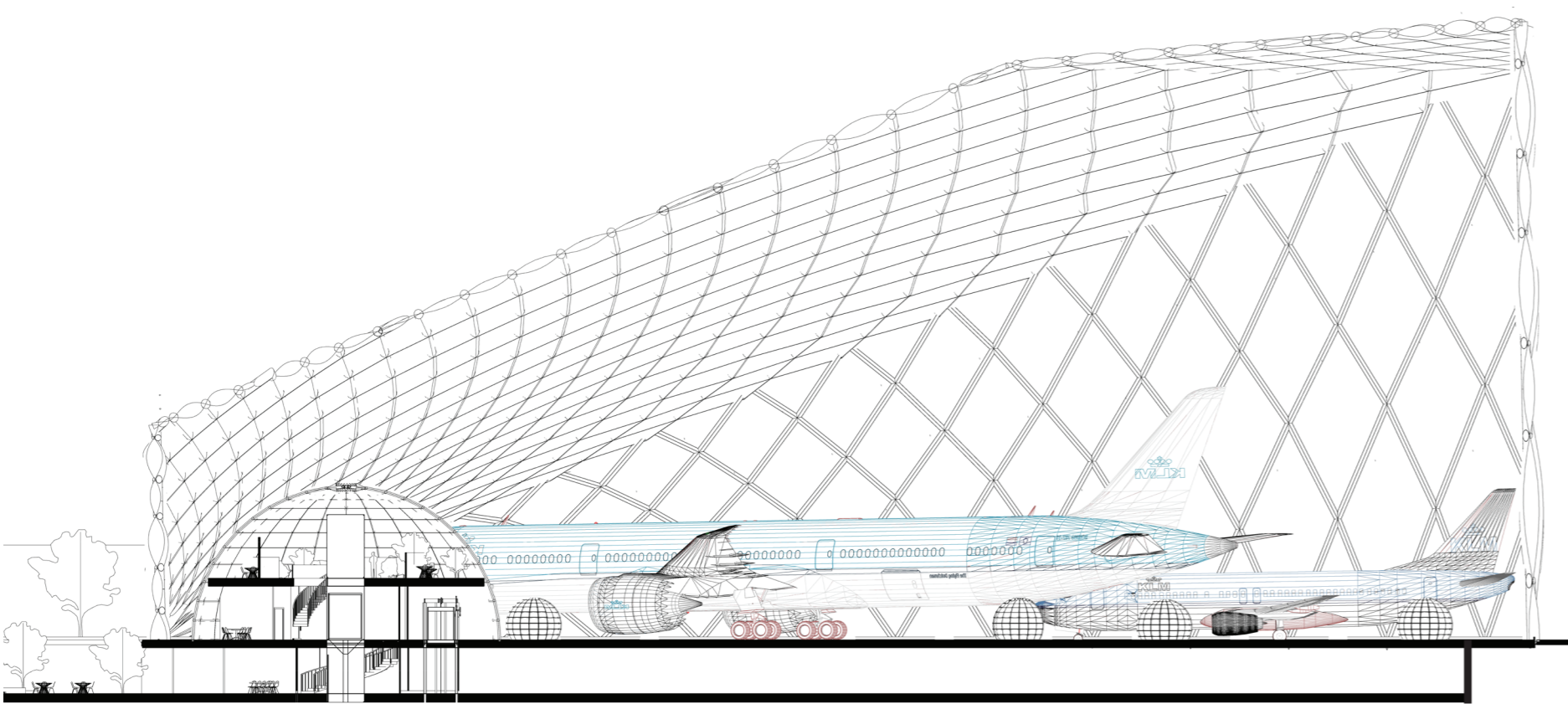
Interior hangar



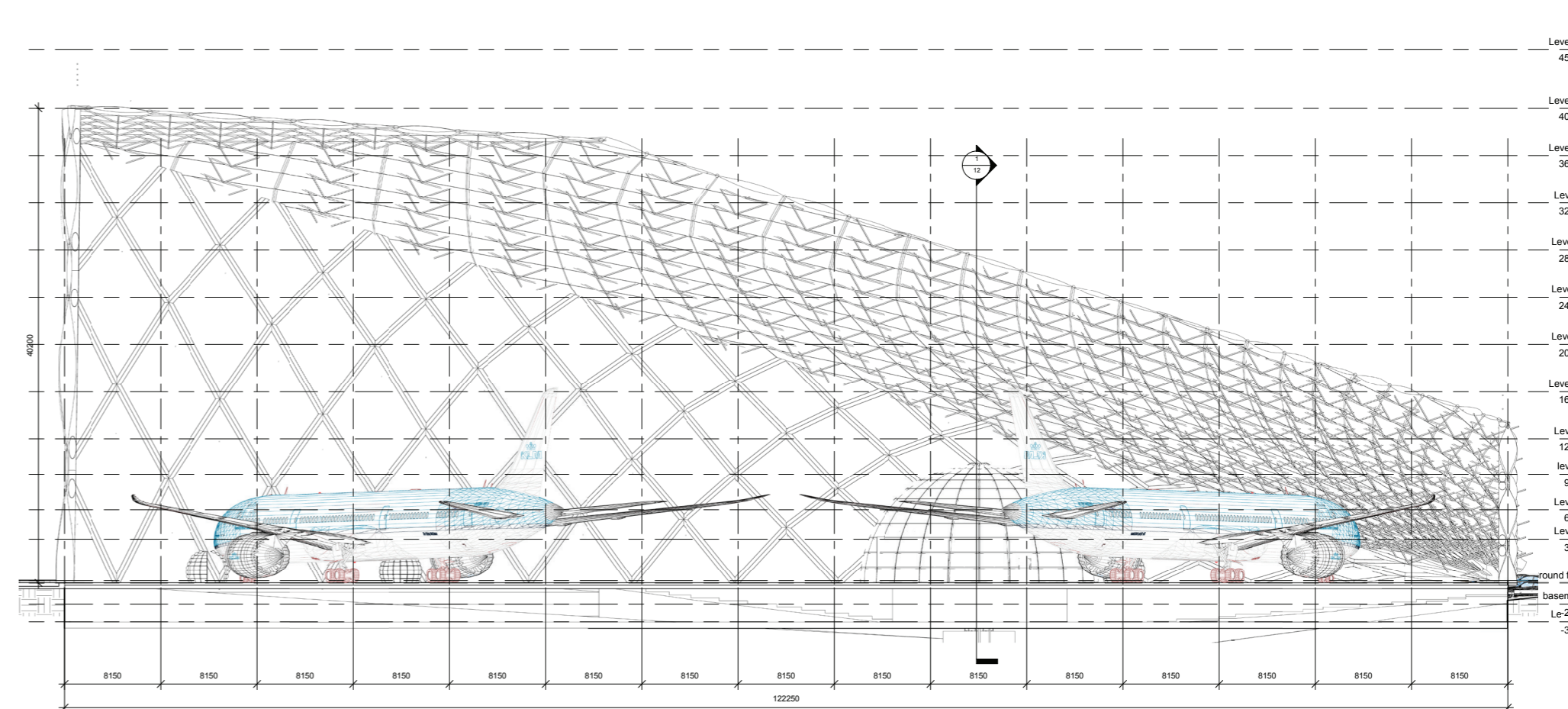
Schiphol Oost



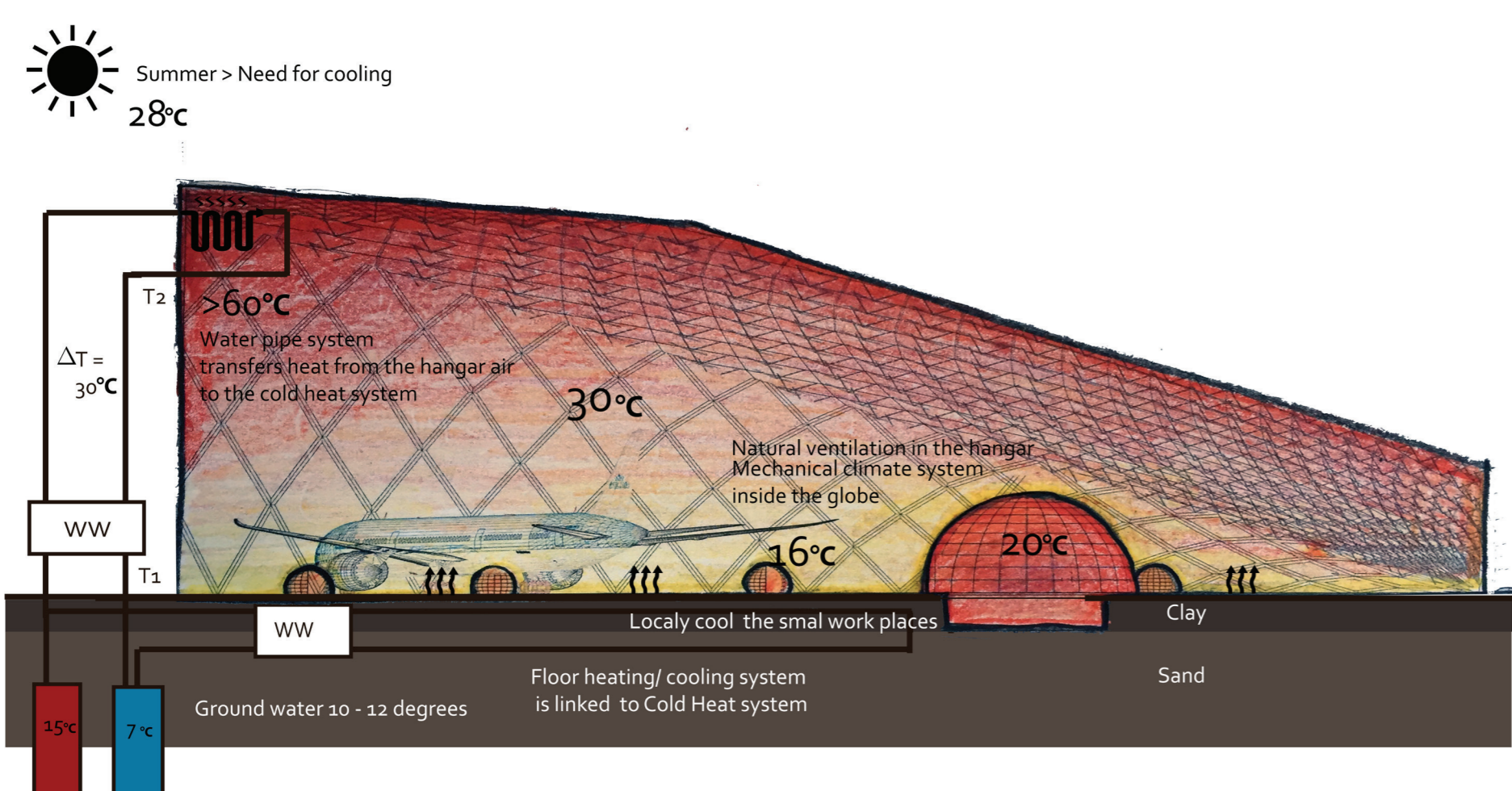
3D view South facade



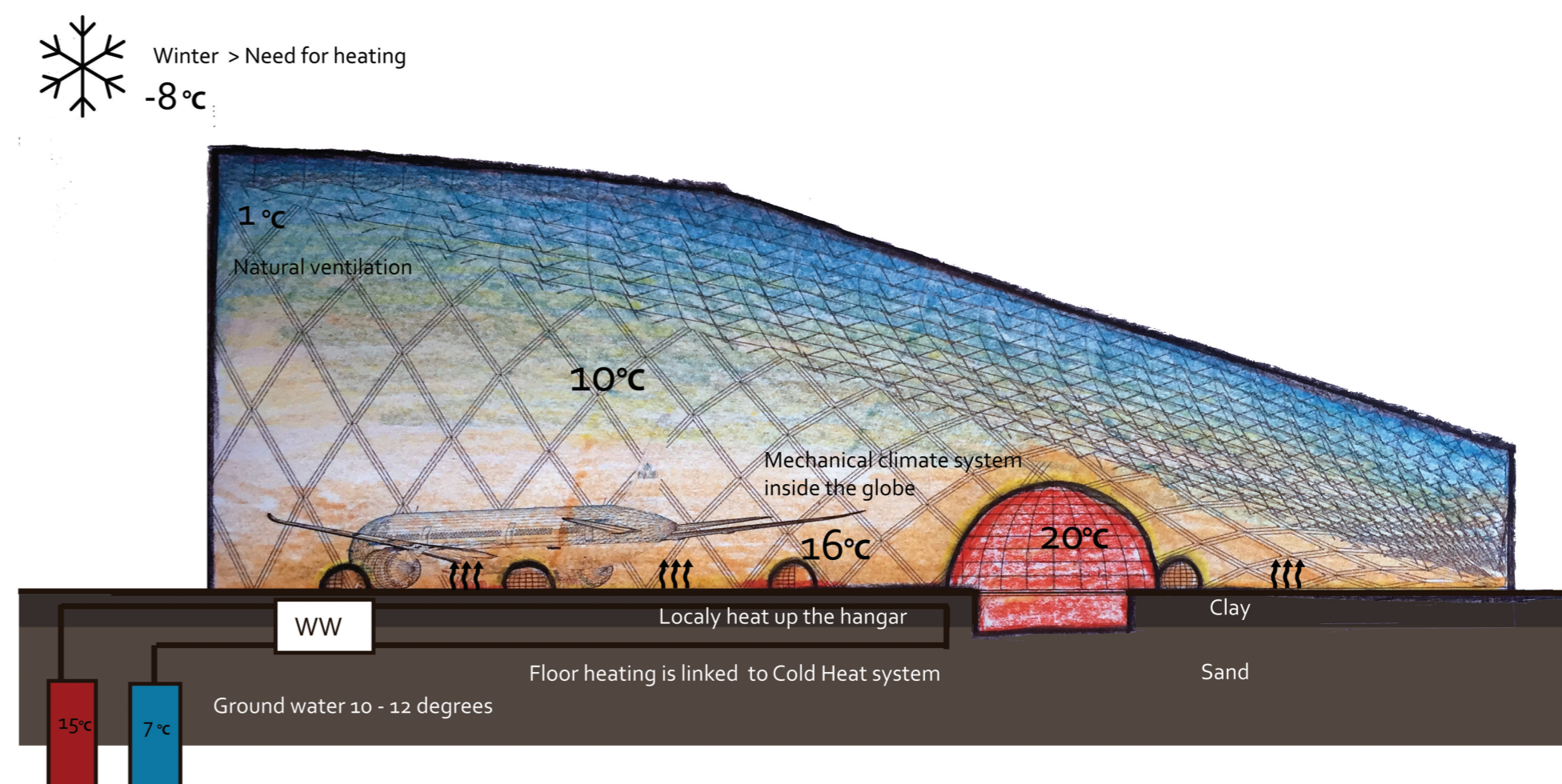
Section A 1: 200



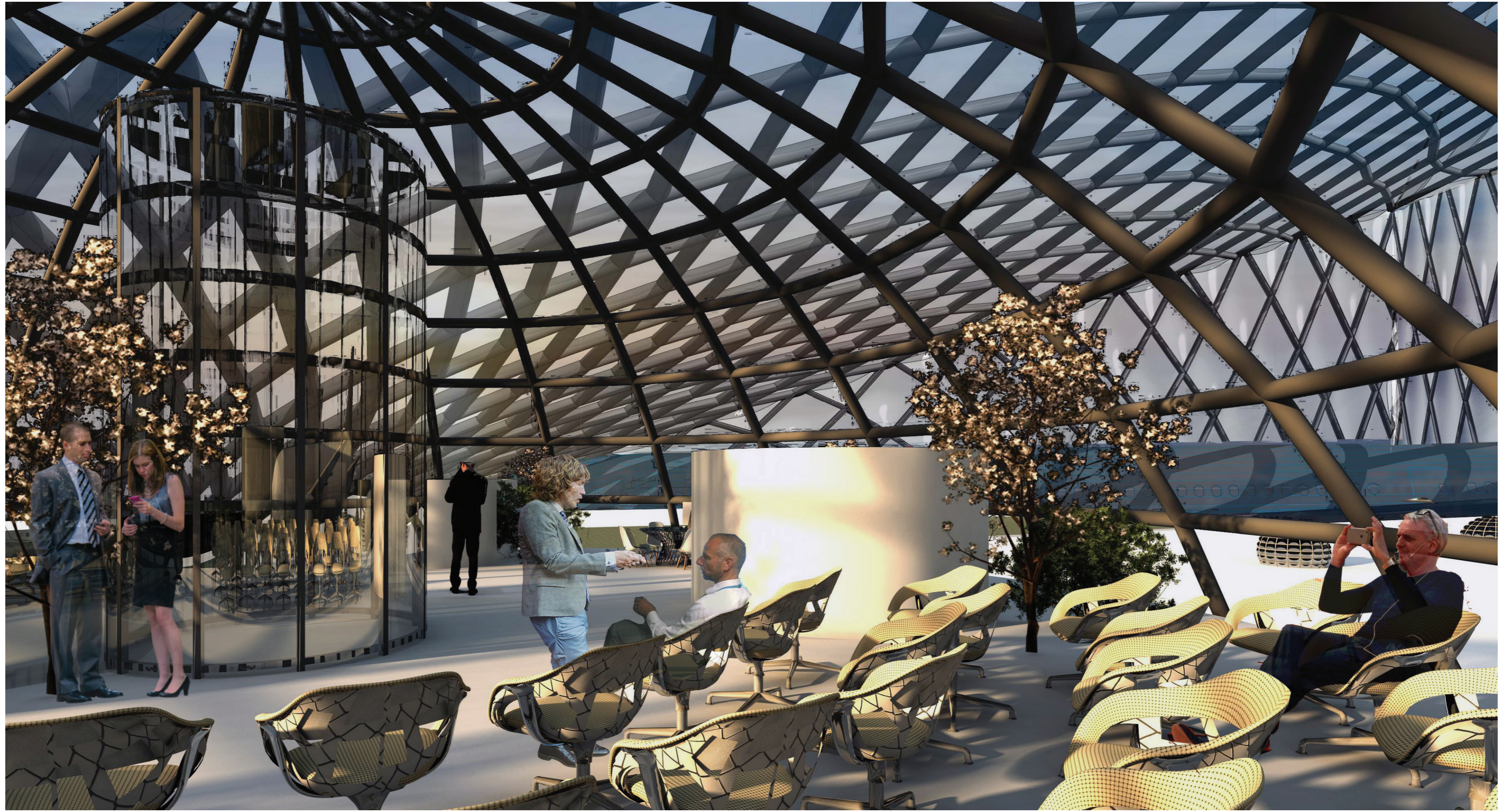
Section B 1: 200



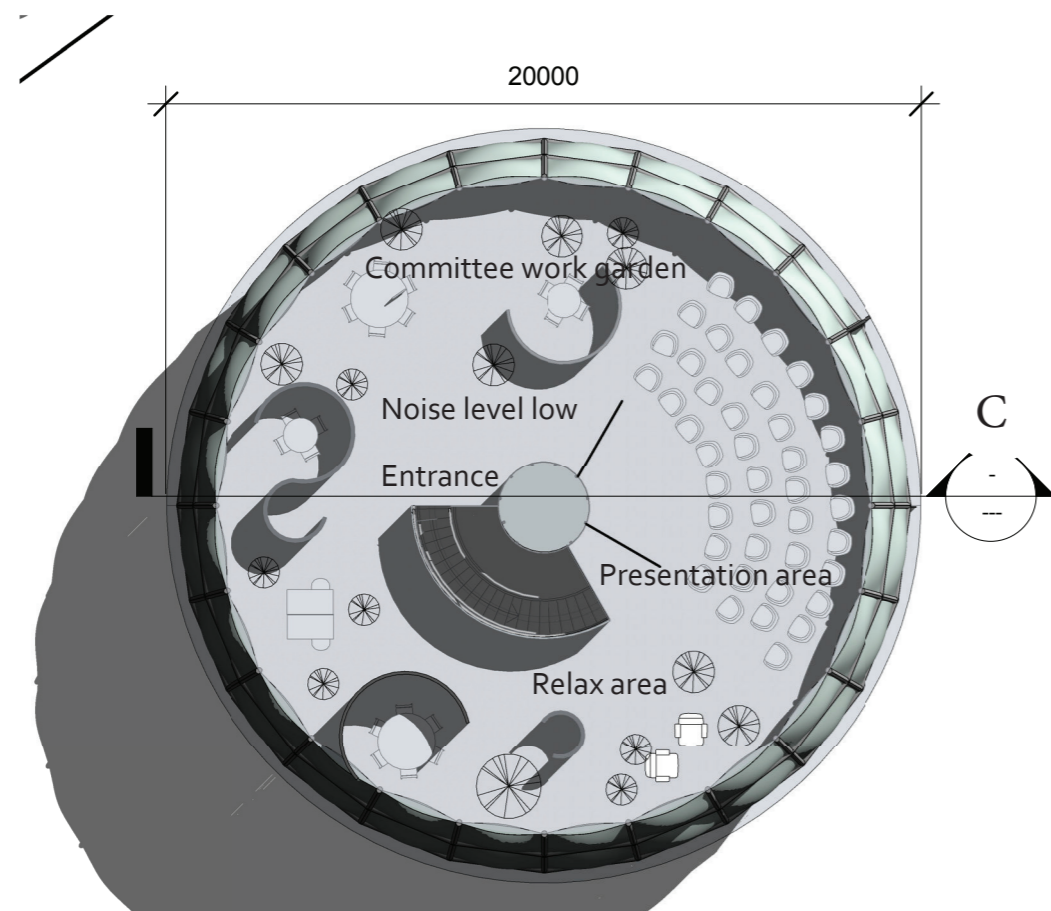
Climate concept Summer



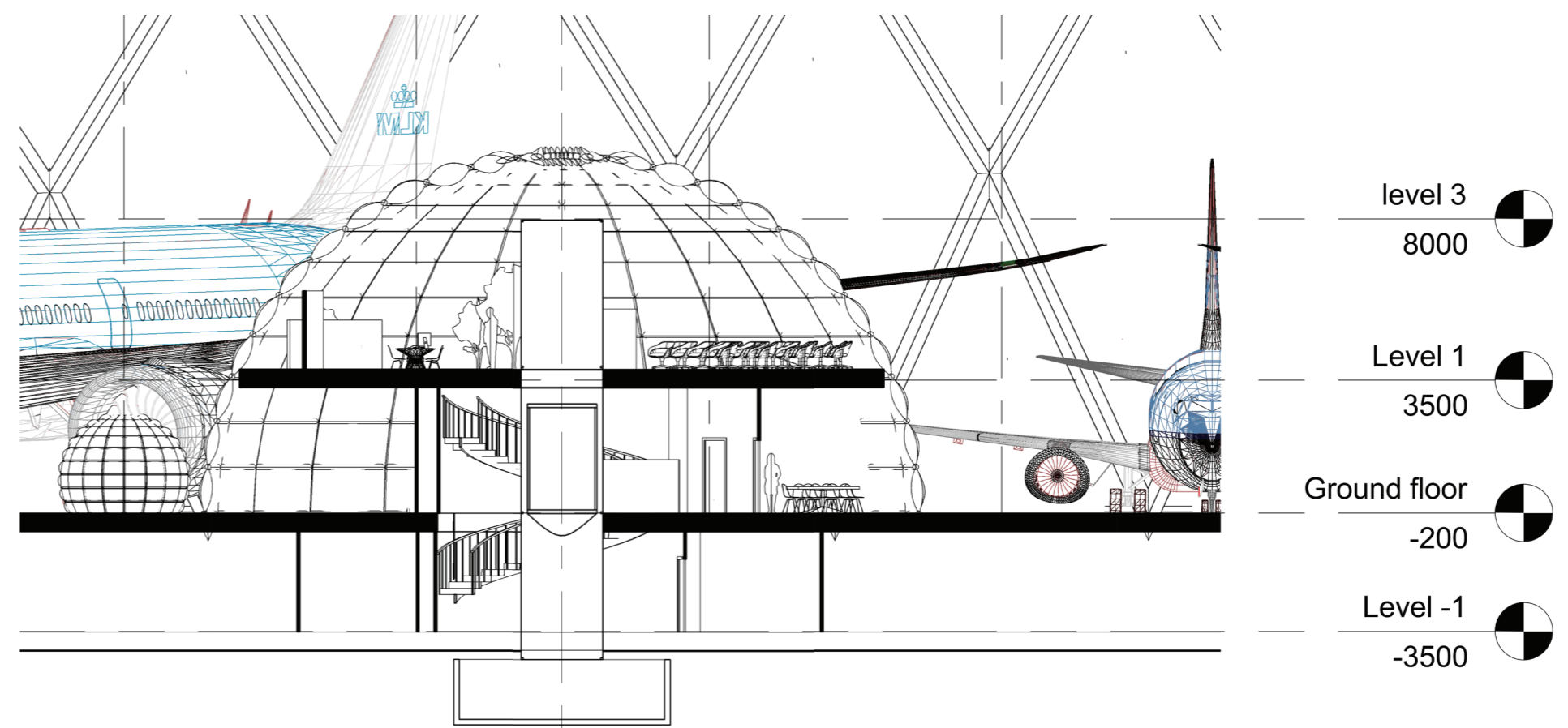
Climate concept Winter



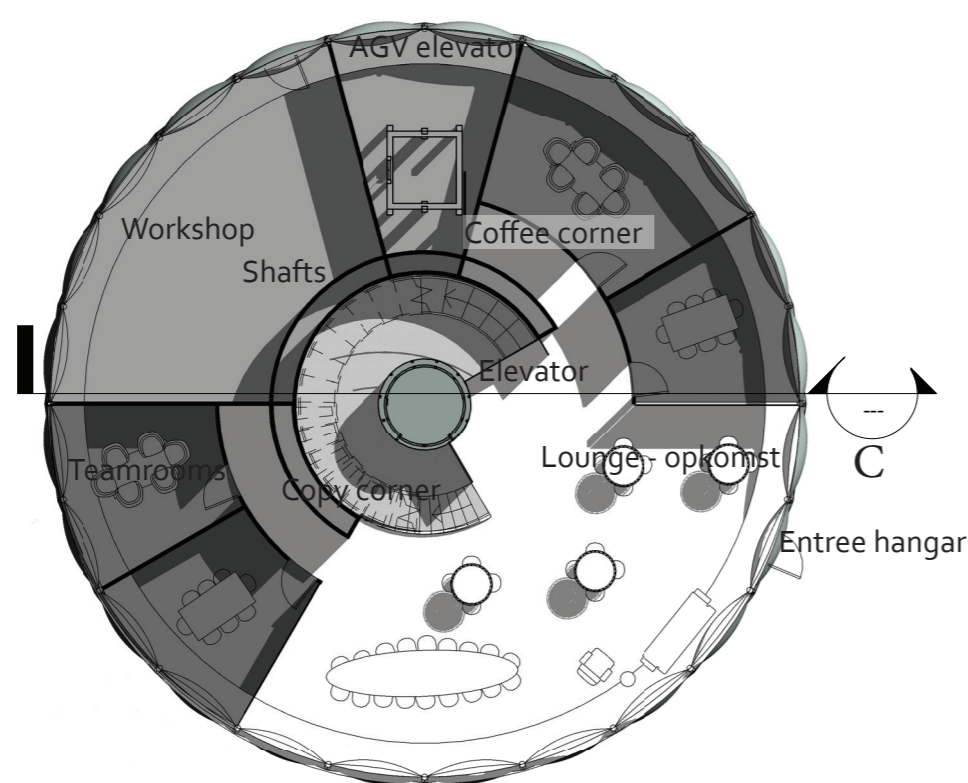
Presentation room



Floorplan 1st floor 1:200



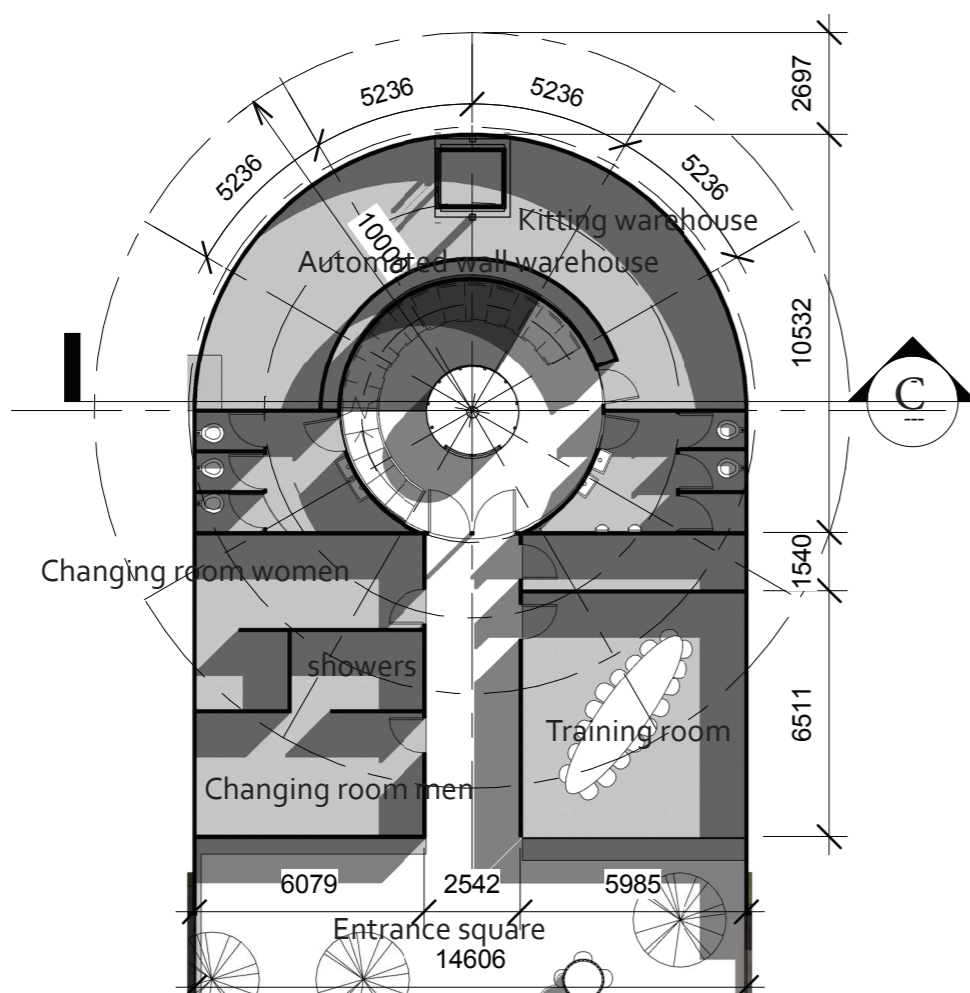
Section C. 1:200



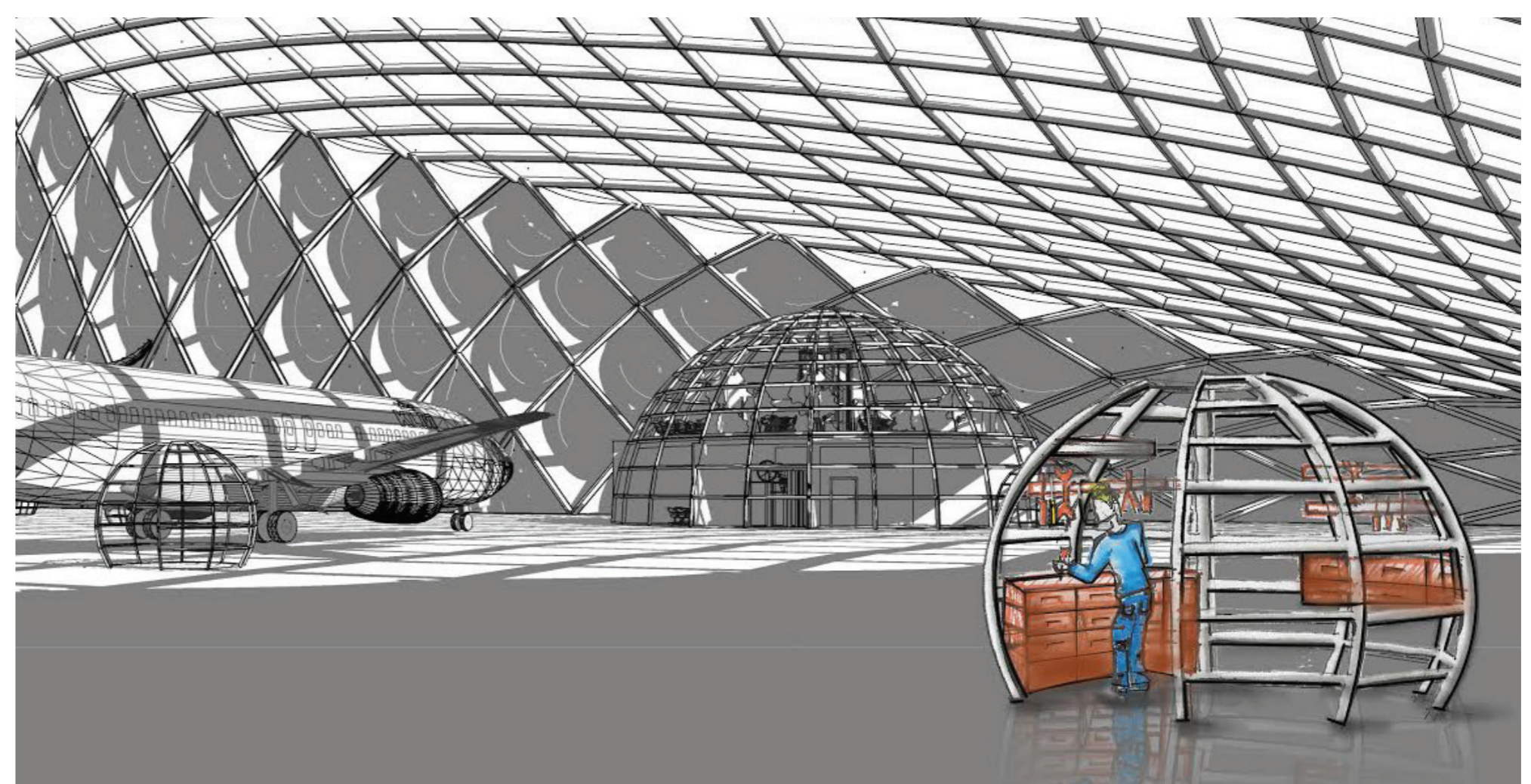
Floorplan Ground Floor 1:200



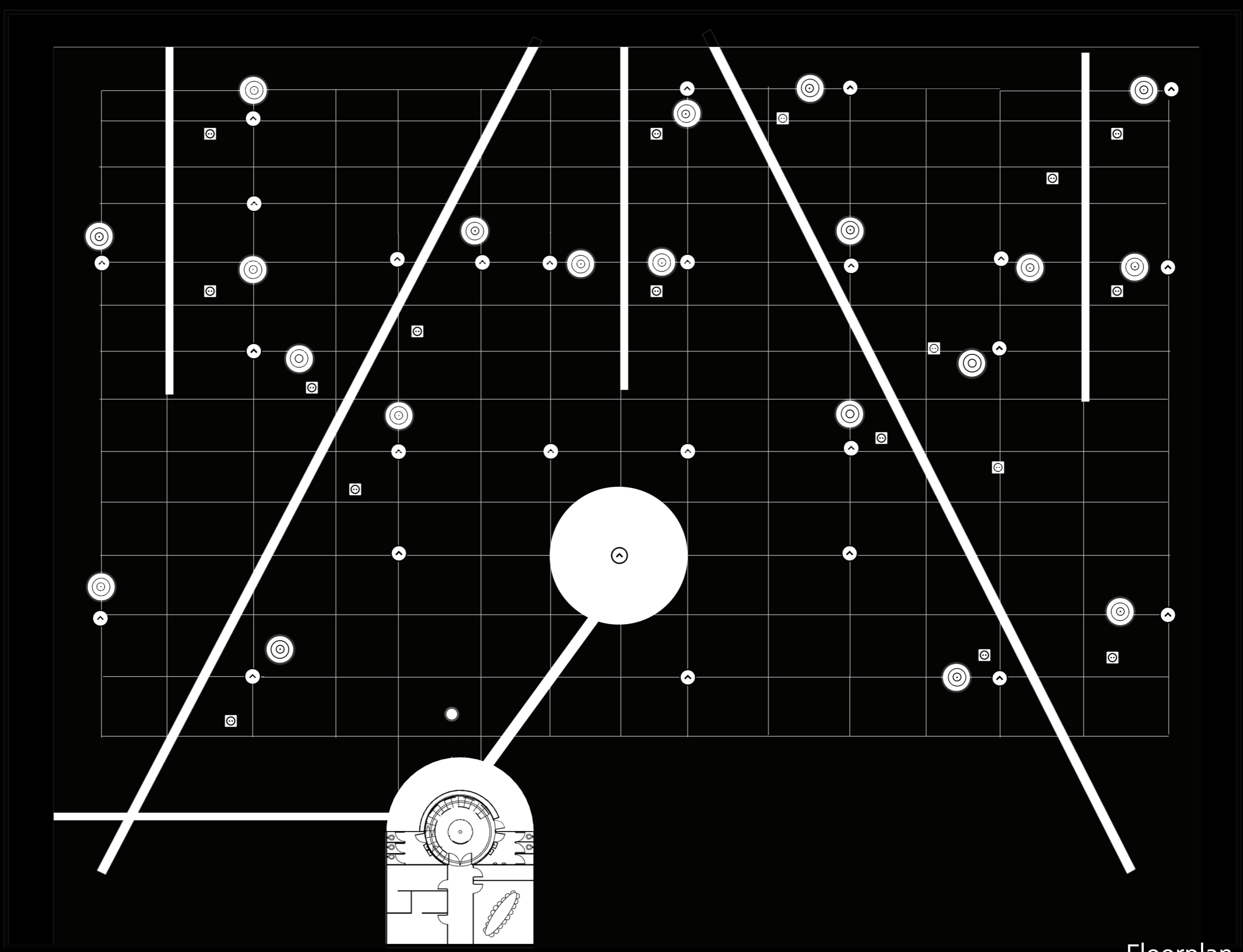
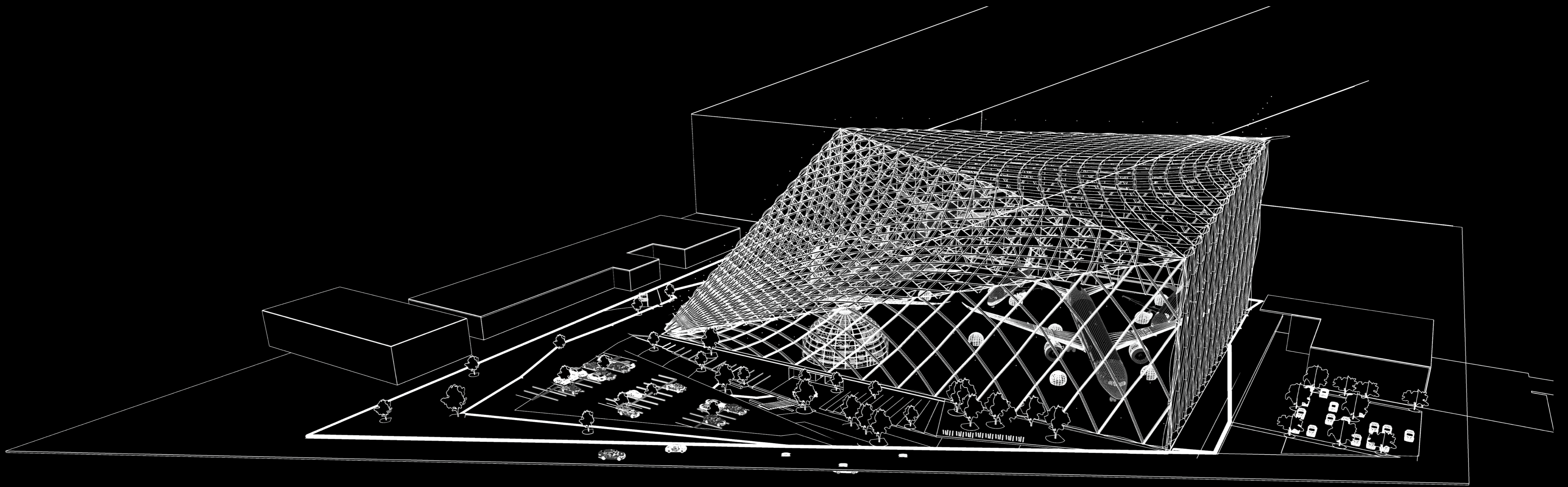
3D view inside Globe GF



Floorplan -1. 1:200

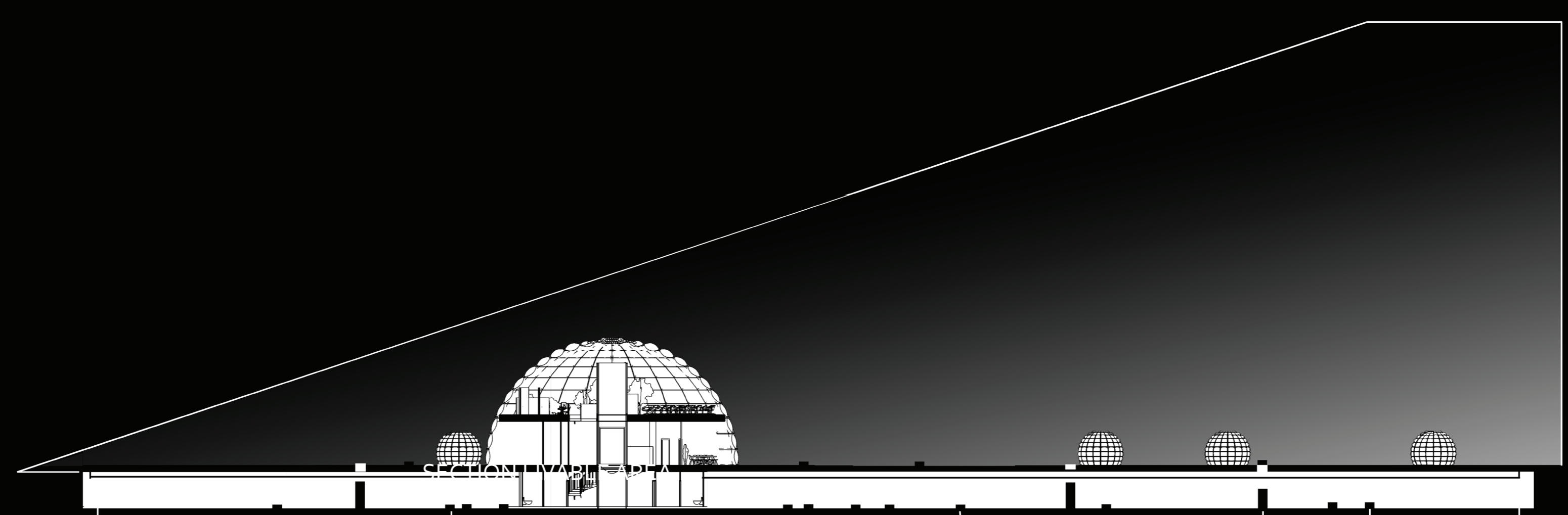


Local workspaces

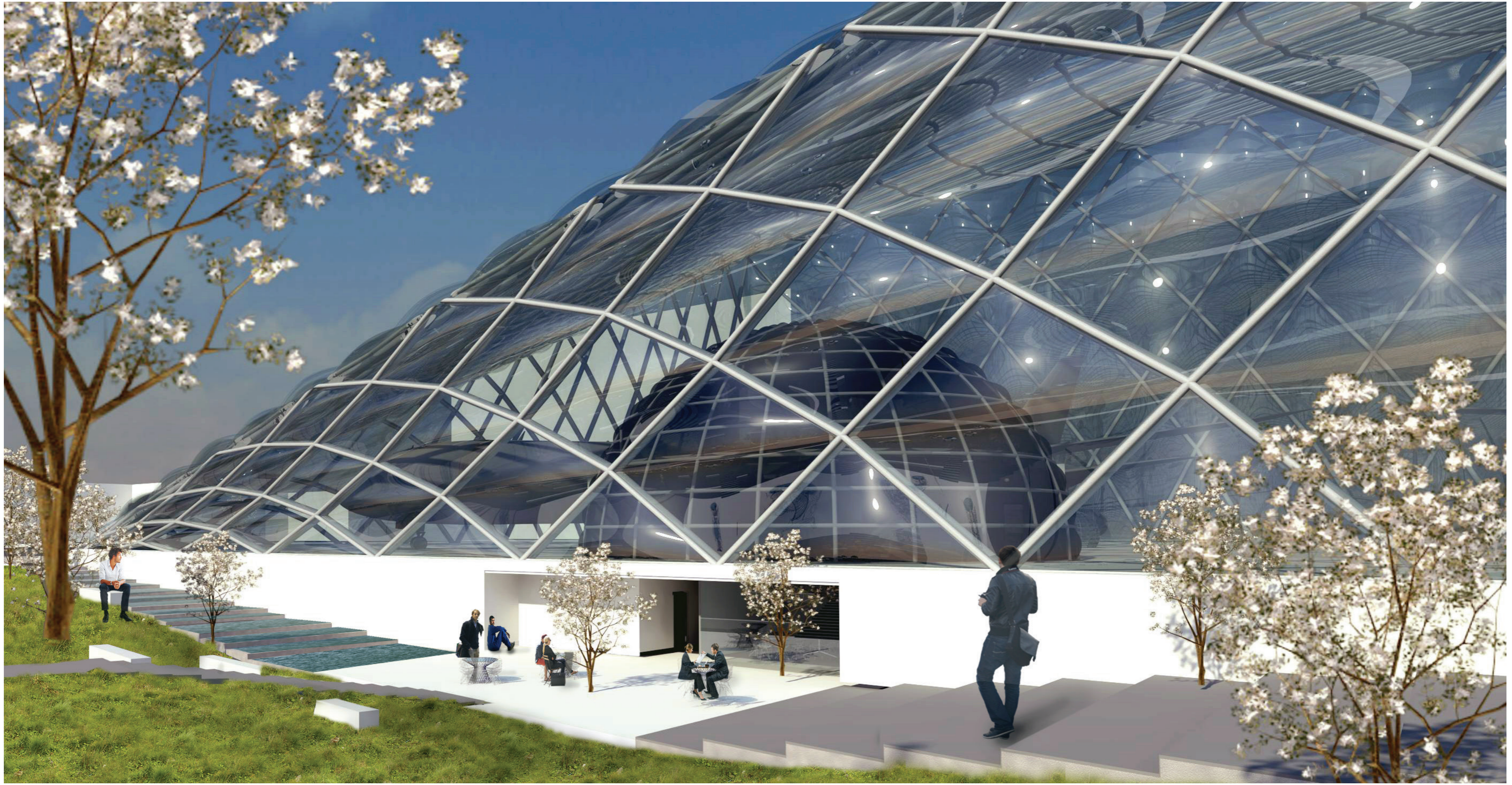


Floorplan -1

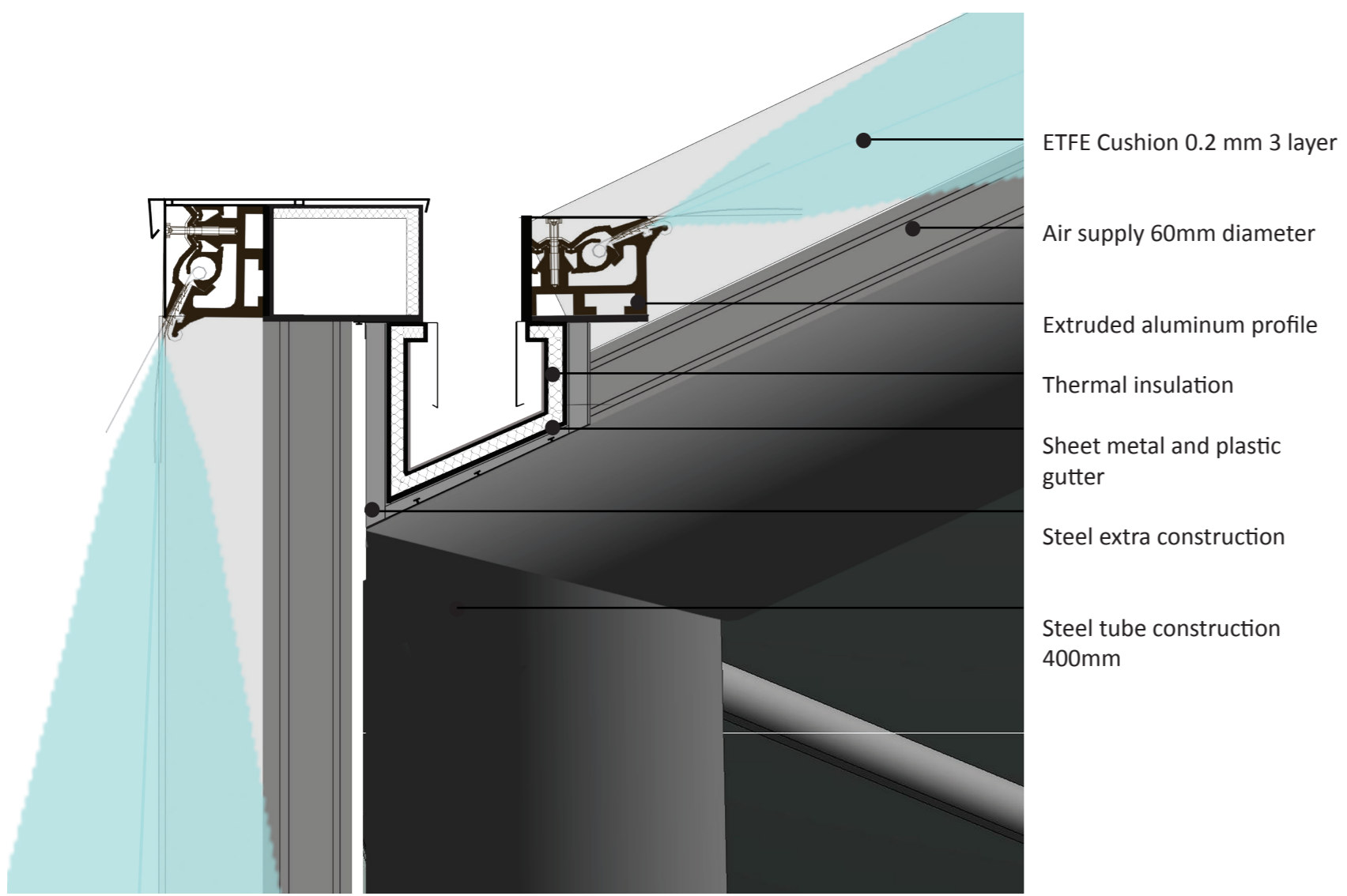
- ⊙ Concentration floor heating for climate in local workspaces
- ⊙ Pop-up points kitting system
- ⊙ Pop-up points technical support
- ⊙ Grid for the automated guided vehicles (AGV's)



Section livable area (white)

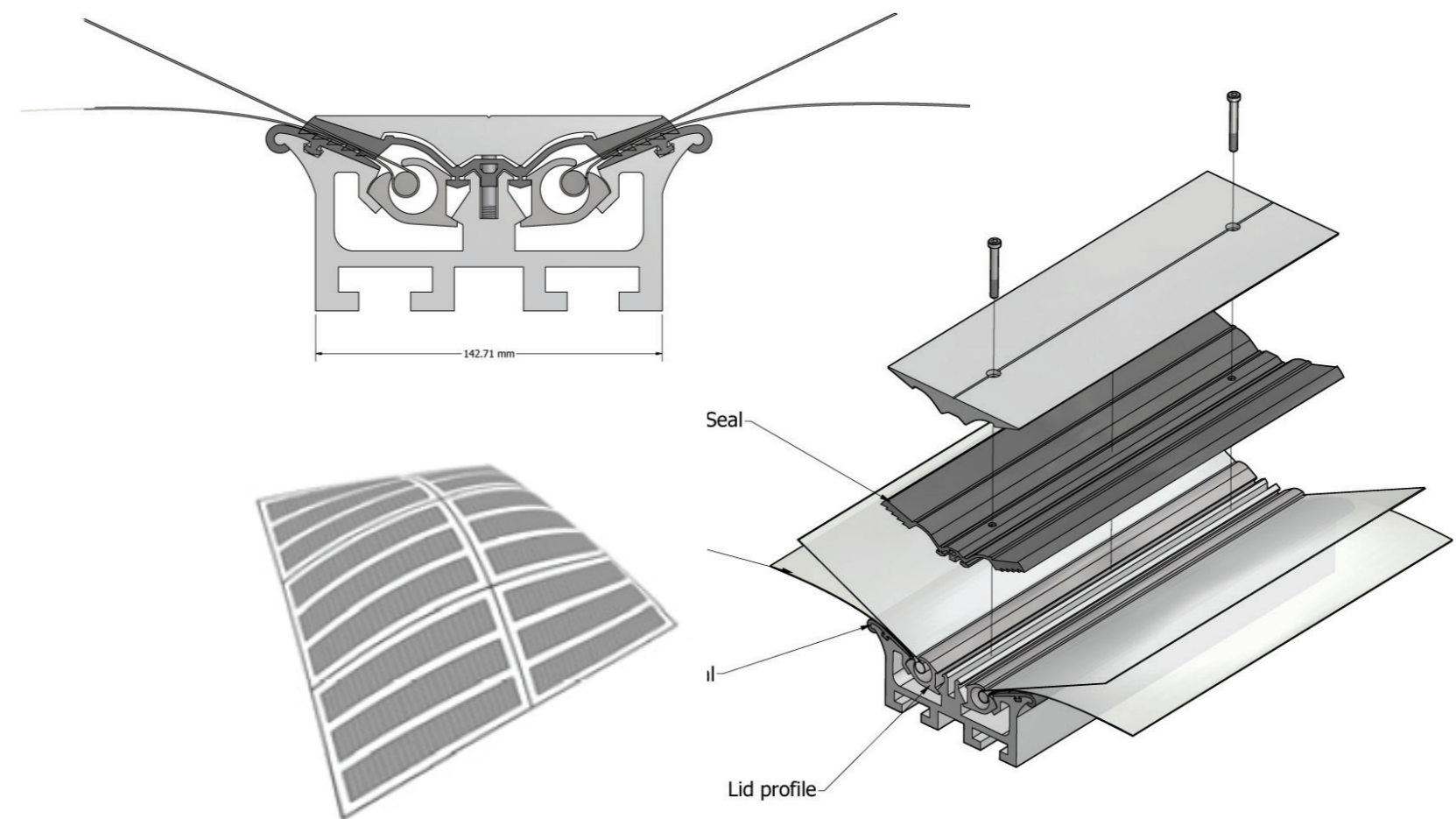


3D view Entrance

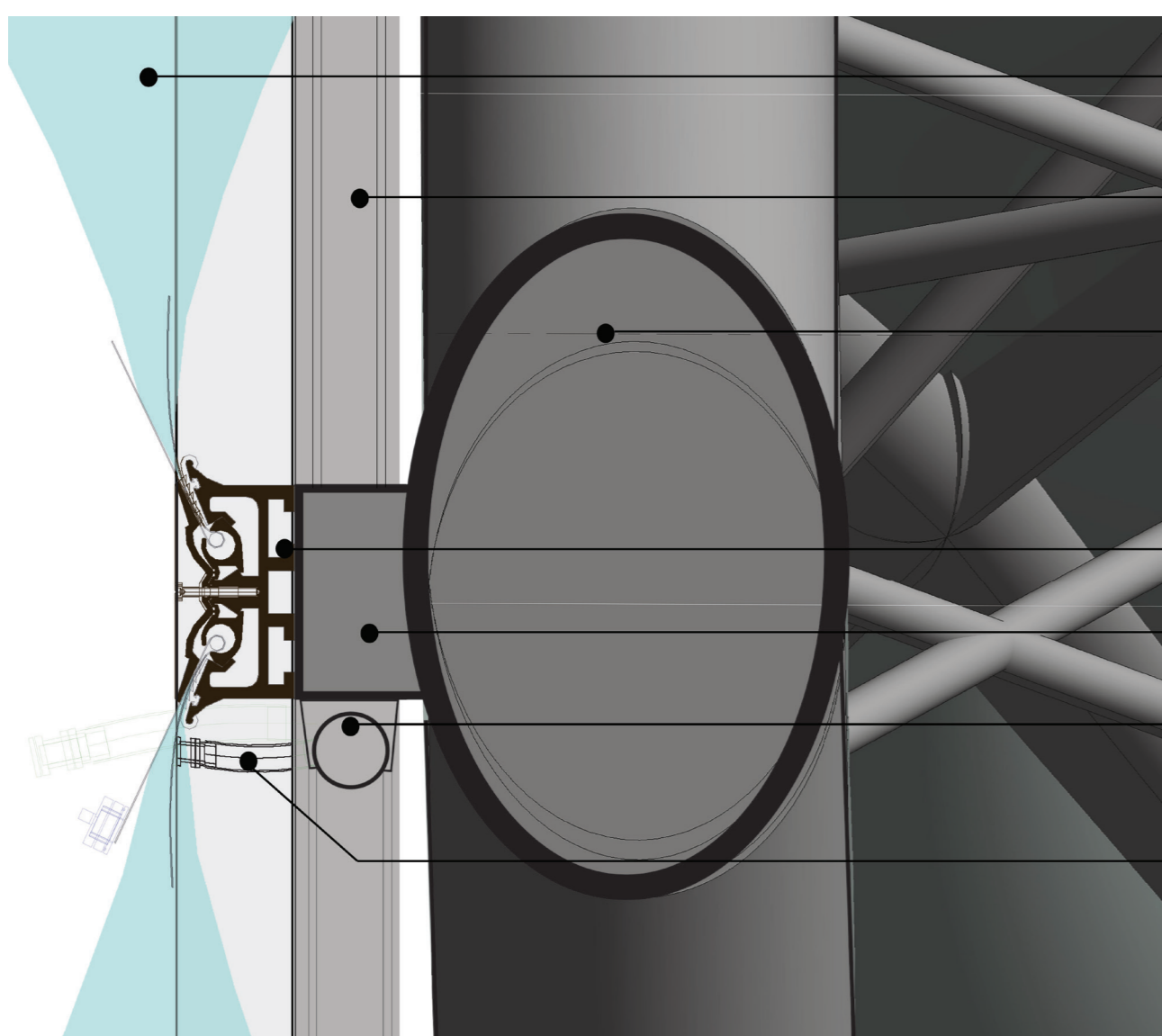


Detail 1. 1:10

- ETFE Cushion 0.2 mm 3 layer
- Air supply 60mm diameter
- Extruded aluminum profile
- Thermal insulation
- Sheet metal and plastic gutter
- Steel extra construction
- Steel tube construction 400mm

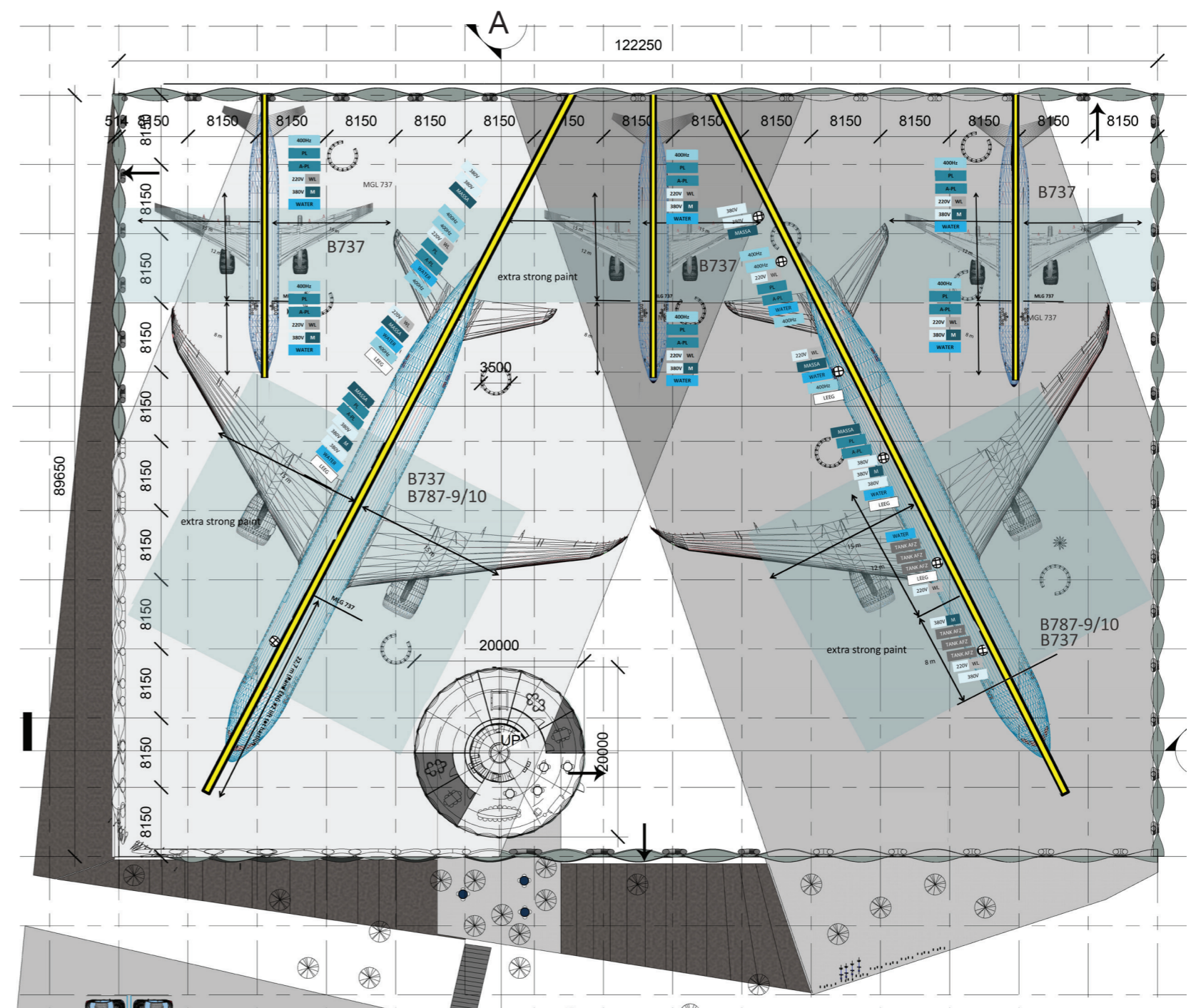


ETFE detail impression

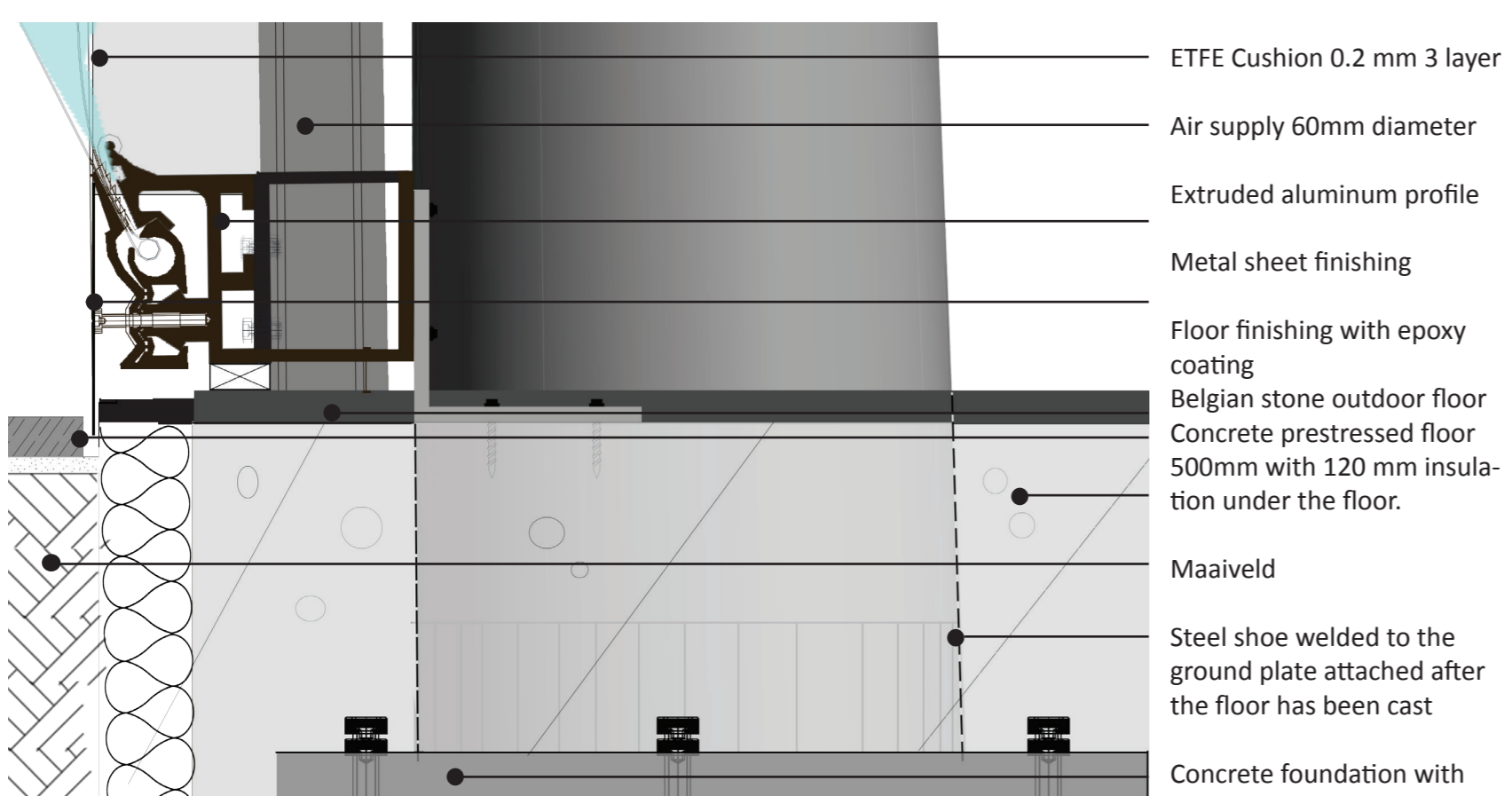


Detail 2. 1:10

- ETFE cushion 0.2 mm thick three layers 500mm widest point
- Air supply tube plastic 60mm diameter
- Main construction 400mm steel construction tube round
- Extruded aluminum profile round edges at etfe attachment points
- Steel connection screwed to the main construction
- Air supply tube section 60 mm
- Rubber air supply pipe adds air every 5-10 minutes to maintain constant pressure

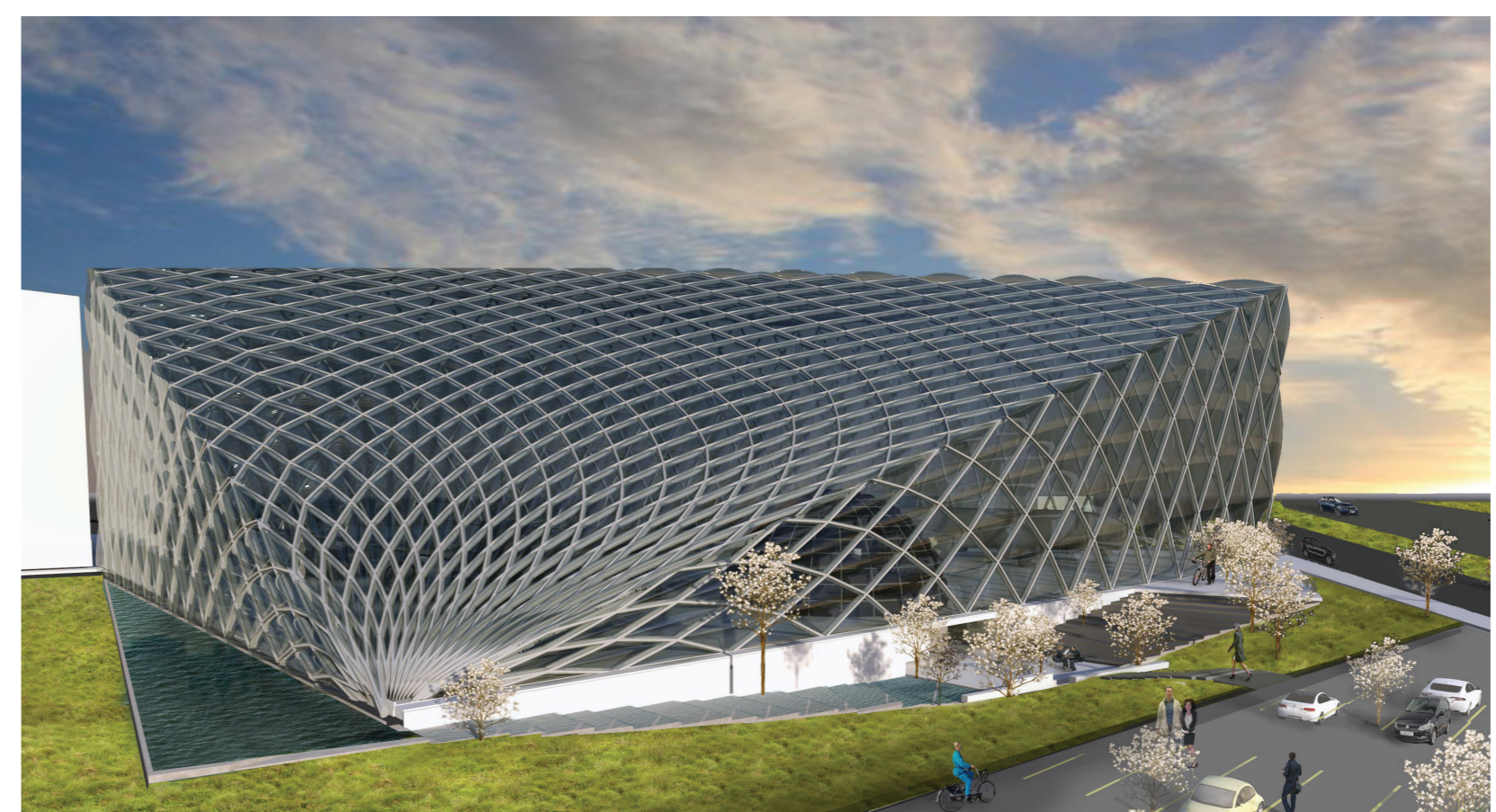


Measurements and technical facilities



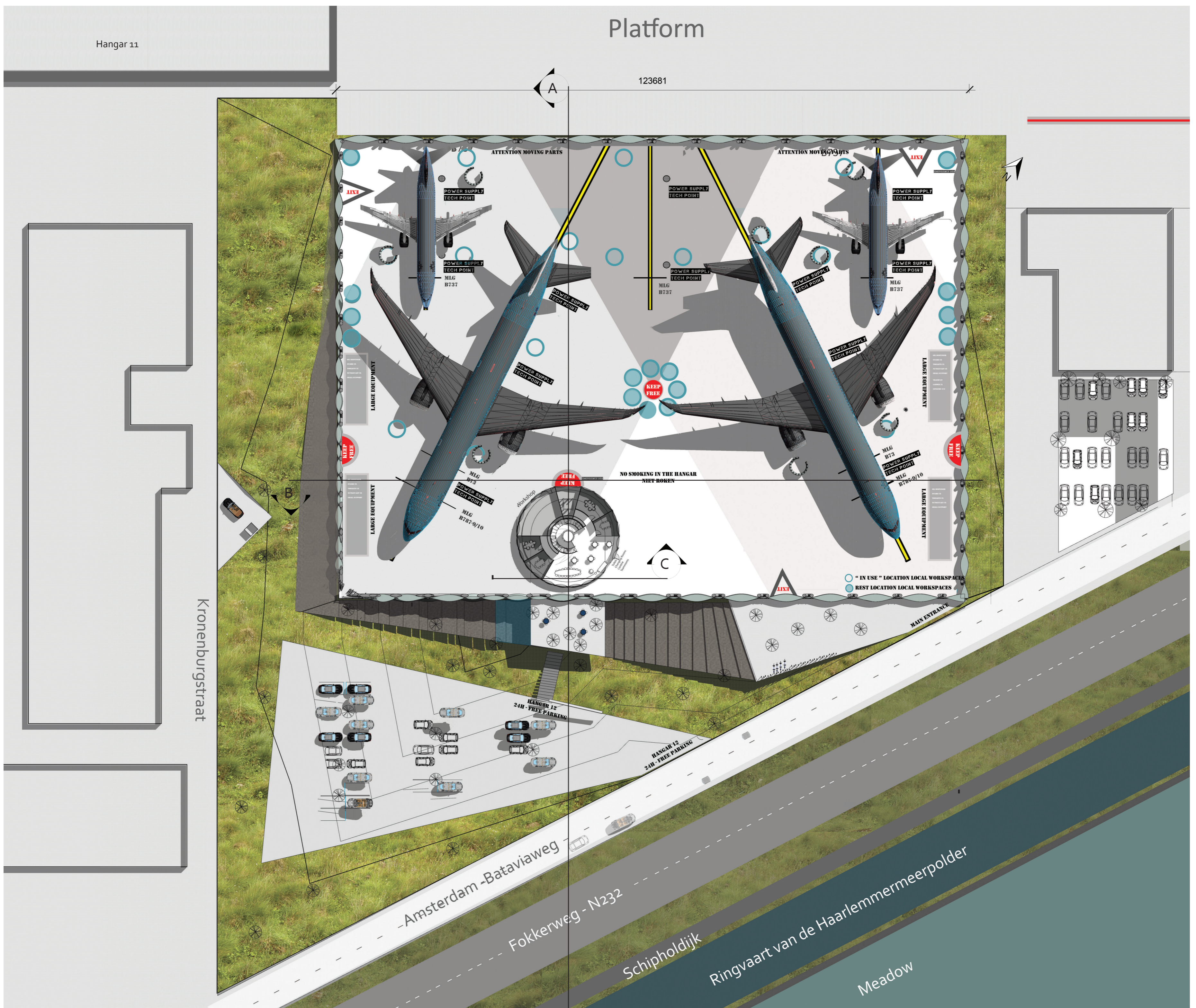
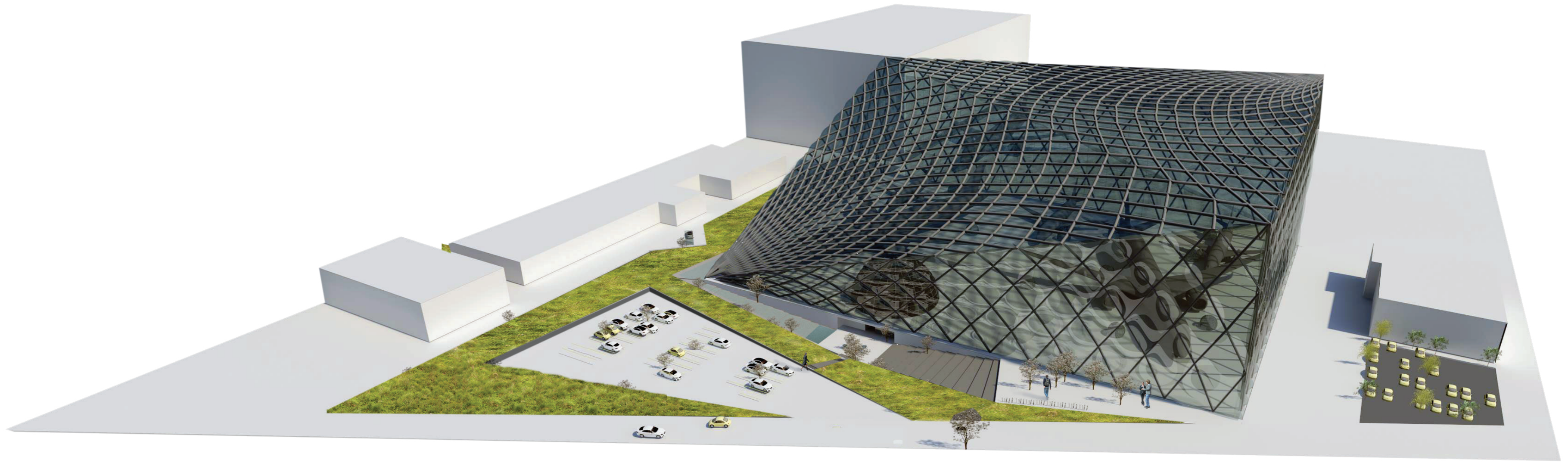
Detail 3. 1:10

- ETFE Cushion 0.2 mm 3 layer
- Air supply 60mm diameter
- Extruded aluminum profile
- Metal sheet finishing
- Floor finishing with epoxy coating
- Belgian stone outdoor floor
- Concrete prestressed floor 500mm with 120 mm insulation under the floor.
- Maaveld
- Steel shoe welded to the ground plate attached after the floor has been cast
- Concrete foundation with three steel pins 18 mm pre-cast



South East facade

HANGAR OF THE FUTURE - JASMIJN KOK - 22-01-2016



Floorplan Ground Floor 1:500

