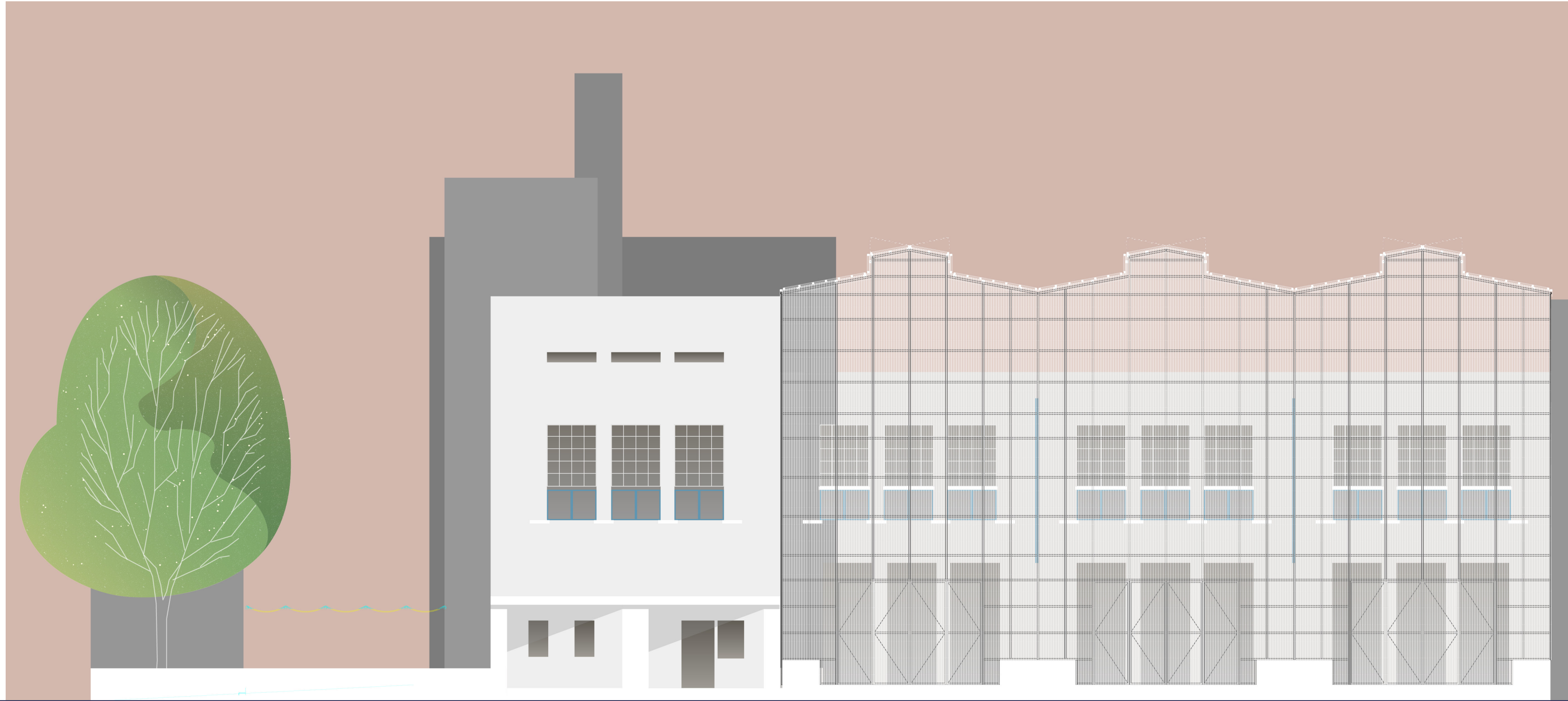


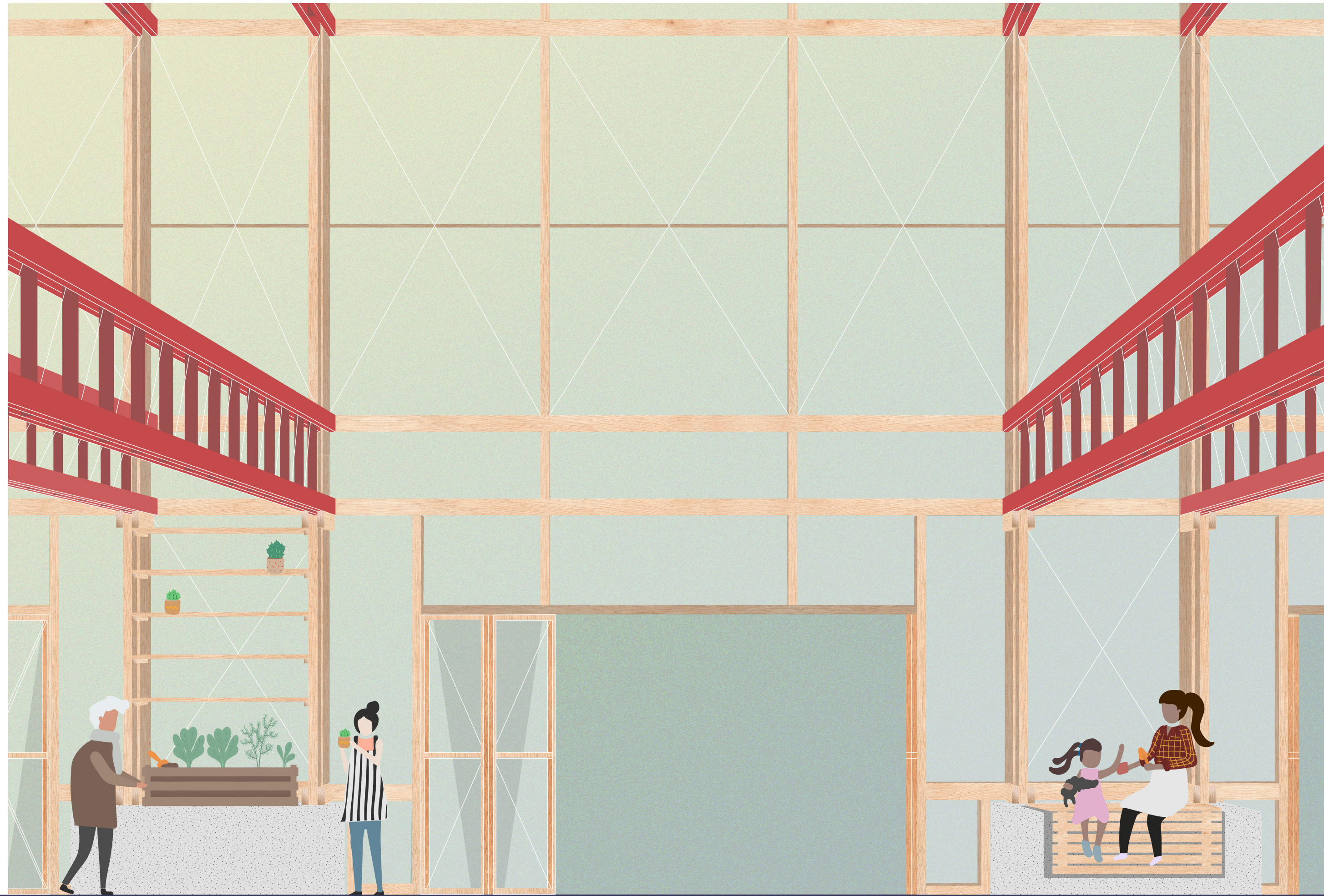




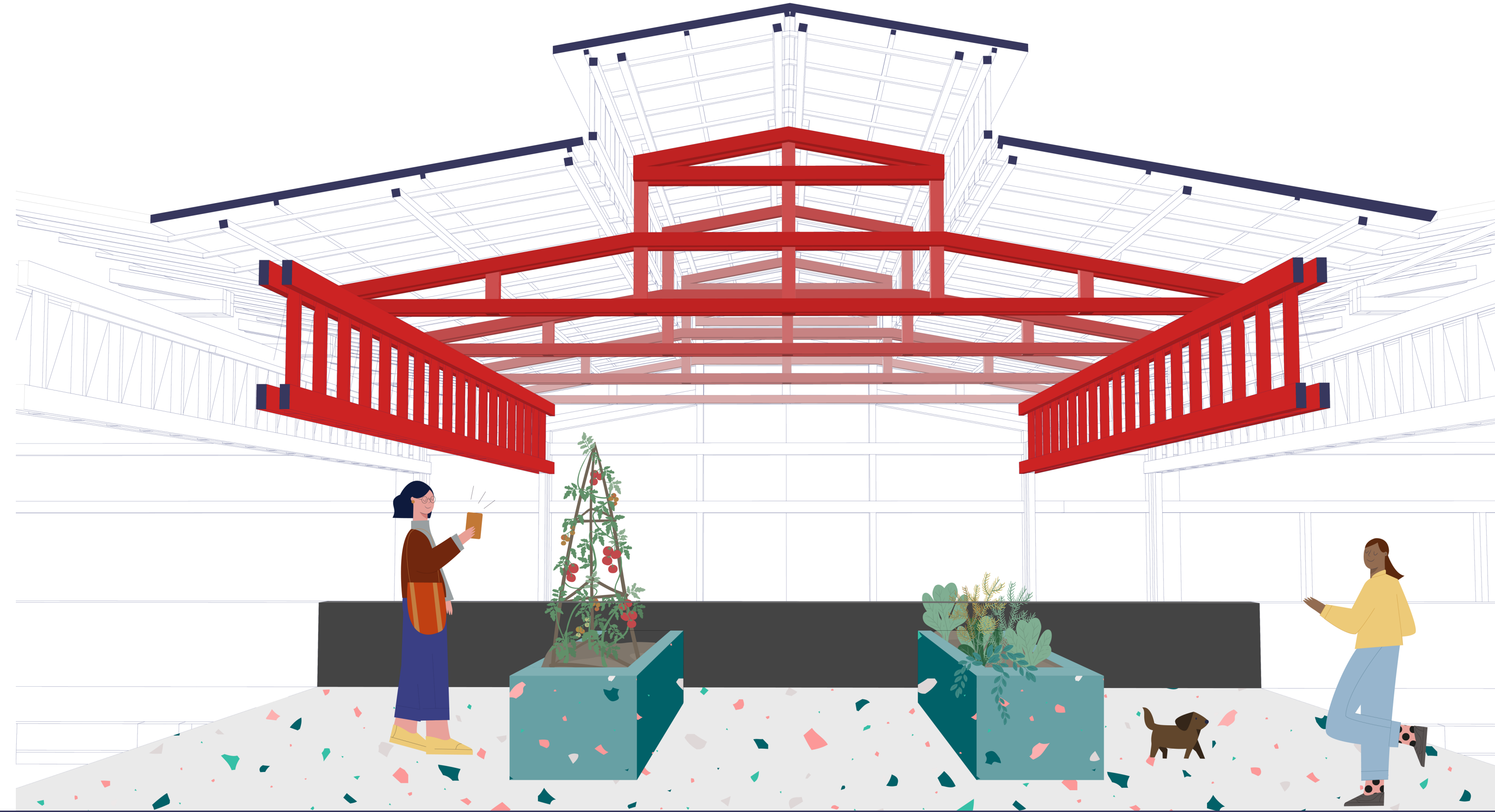
section of the park



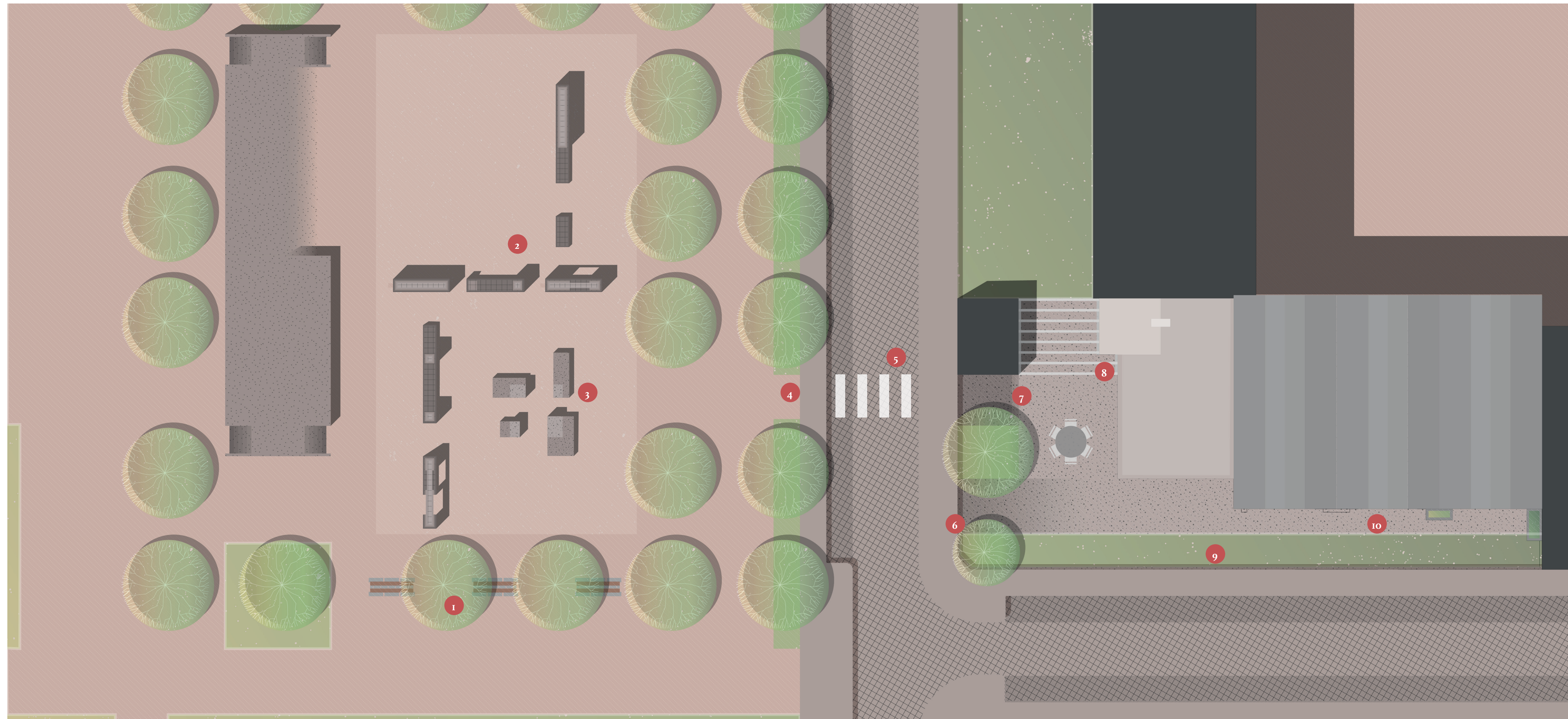
south-east elevation



the new winter garden



the new roof space



10 INTERVENTIONS IN THE SITE

1. the picnic table party

2. the tile walls

3. concrete volumes

4. new entrance to the park

5. new pedestrian crossing

6. ramp up to the Zelfregiehuis

7. steps up to the Zelfregiehuis

8. new entrance area (with pergola)

9. space for growing (plants)

10. extension of wintergarden



PARK TIMELINE - IN 9 PARTS

1. digging out the existing tiles

2. temporarily piling the tiles

3. creating temporary usable structures

4. adding new plants to the freed-up soil

5. cutting the tiles into smaller sizes

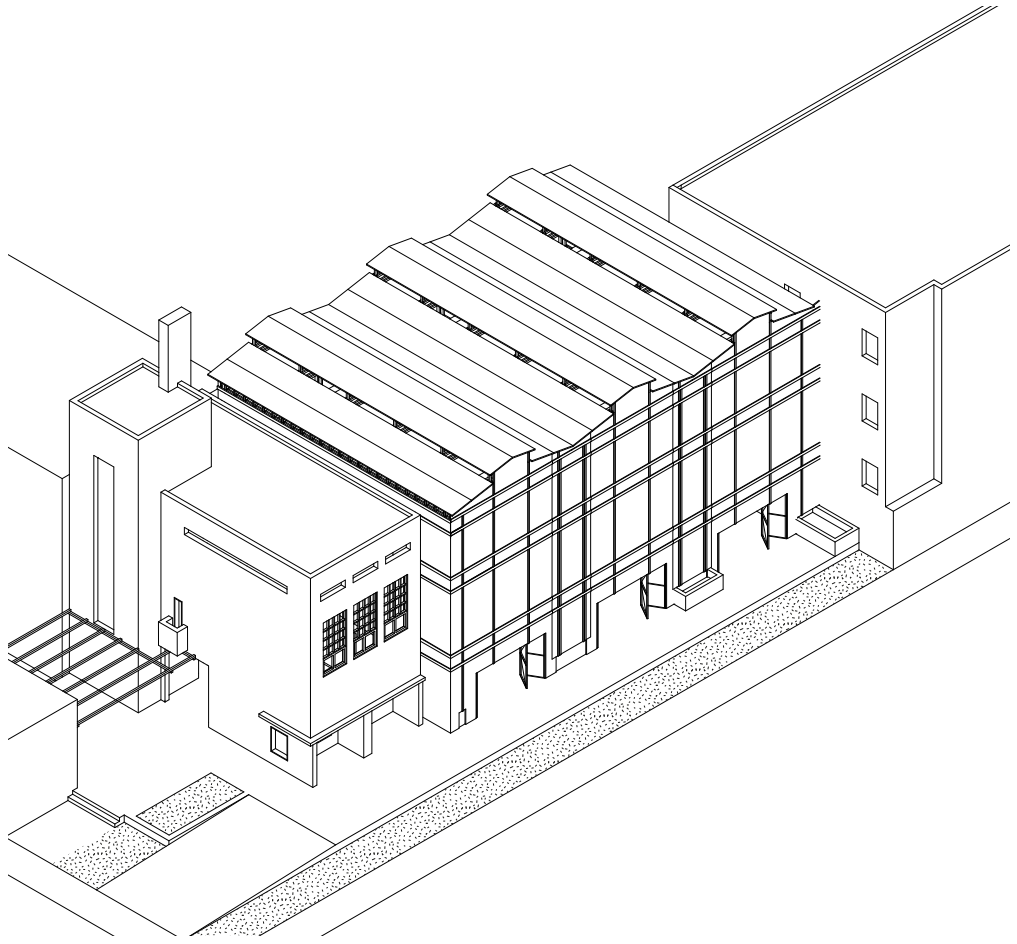
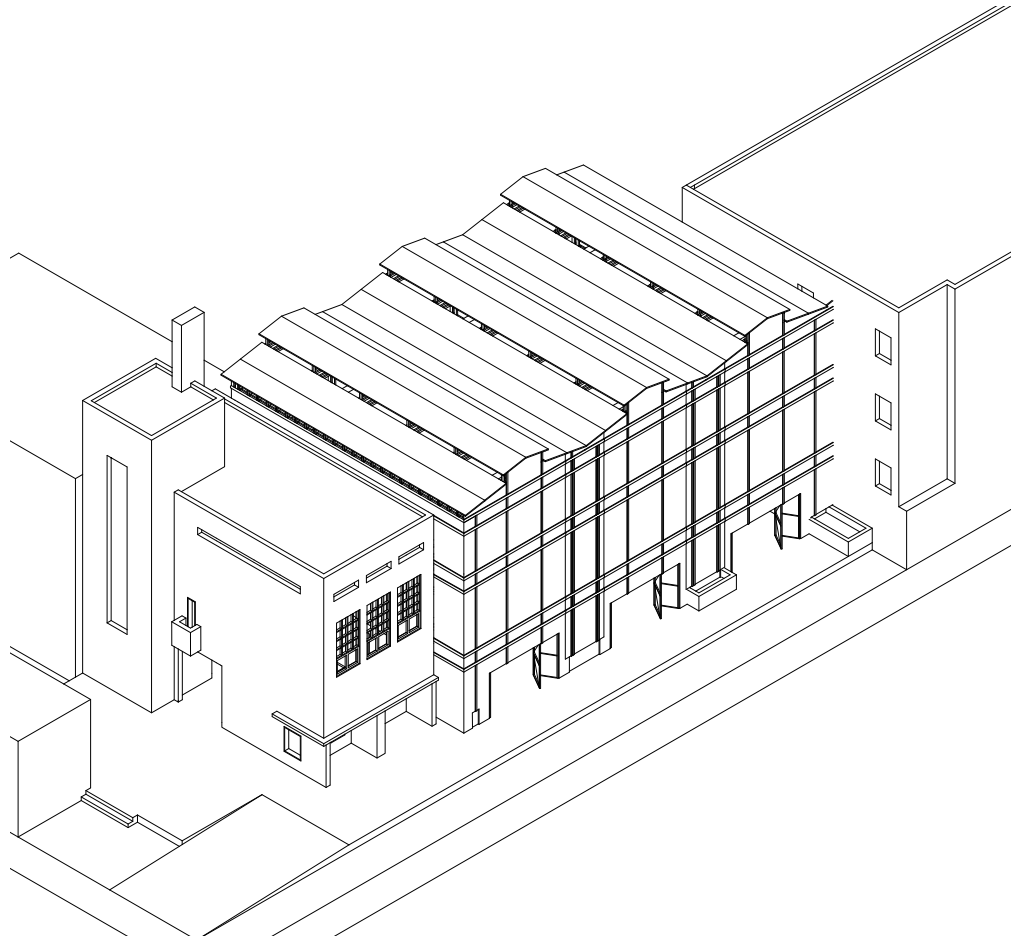
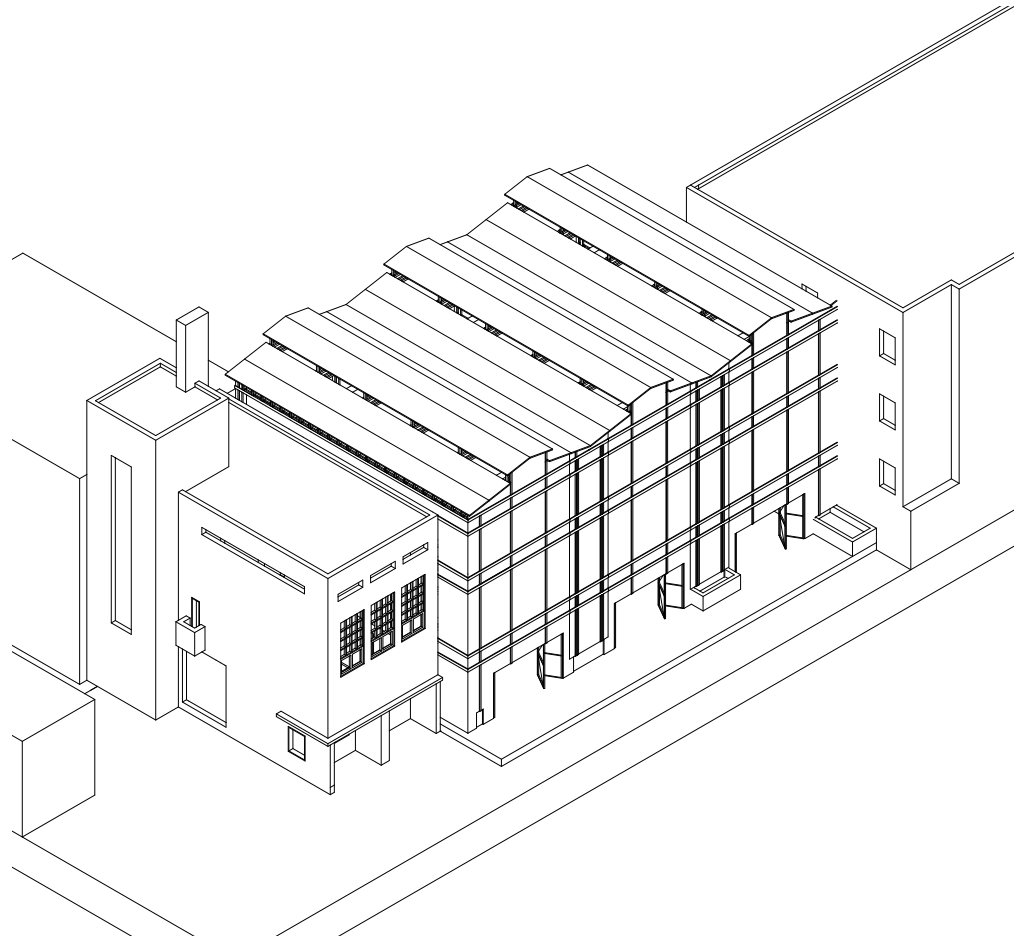
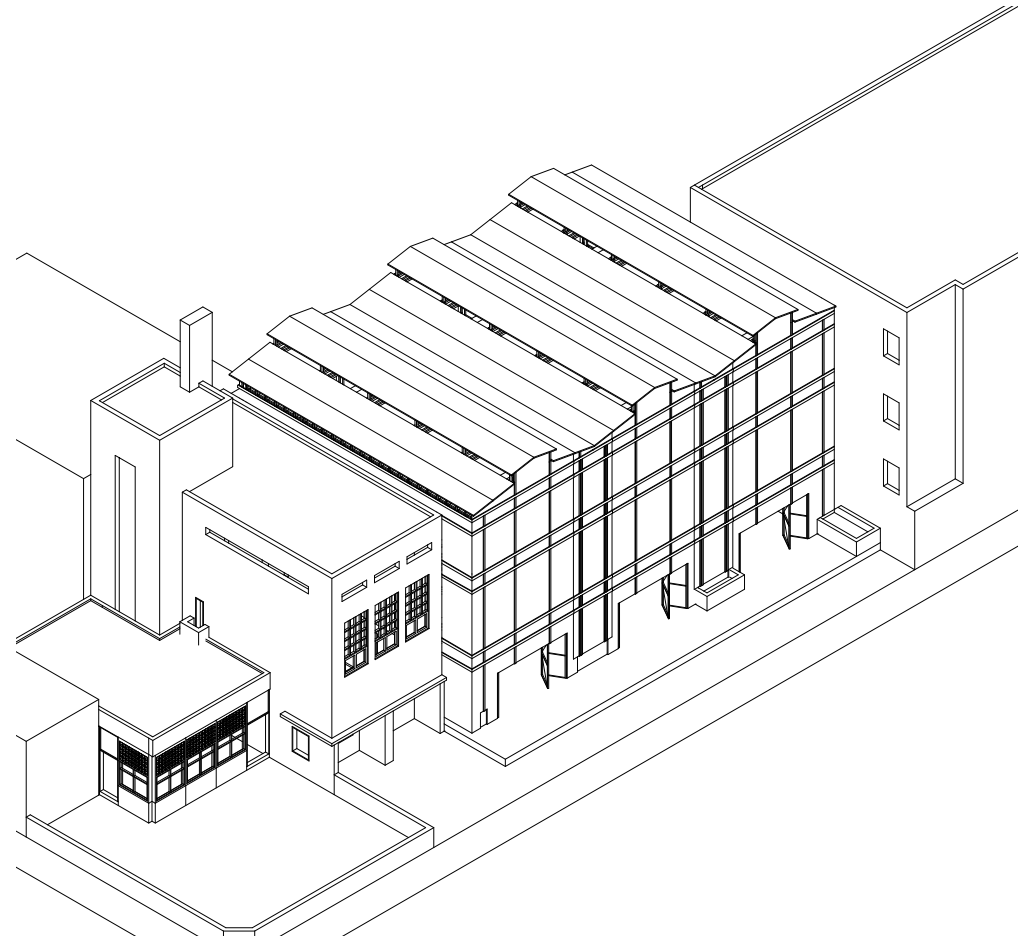
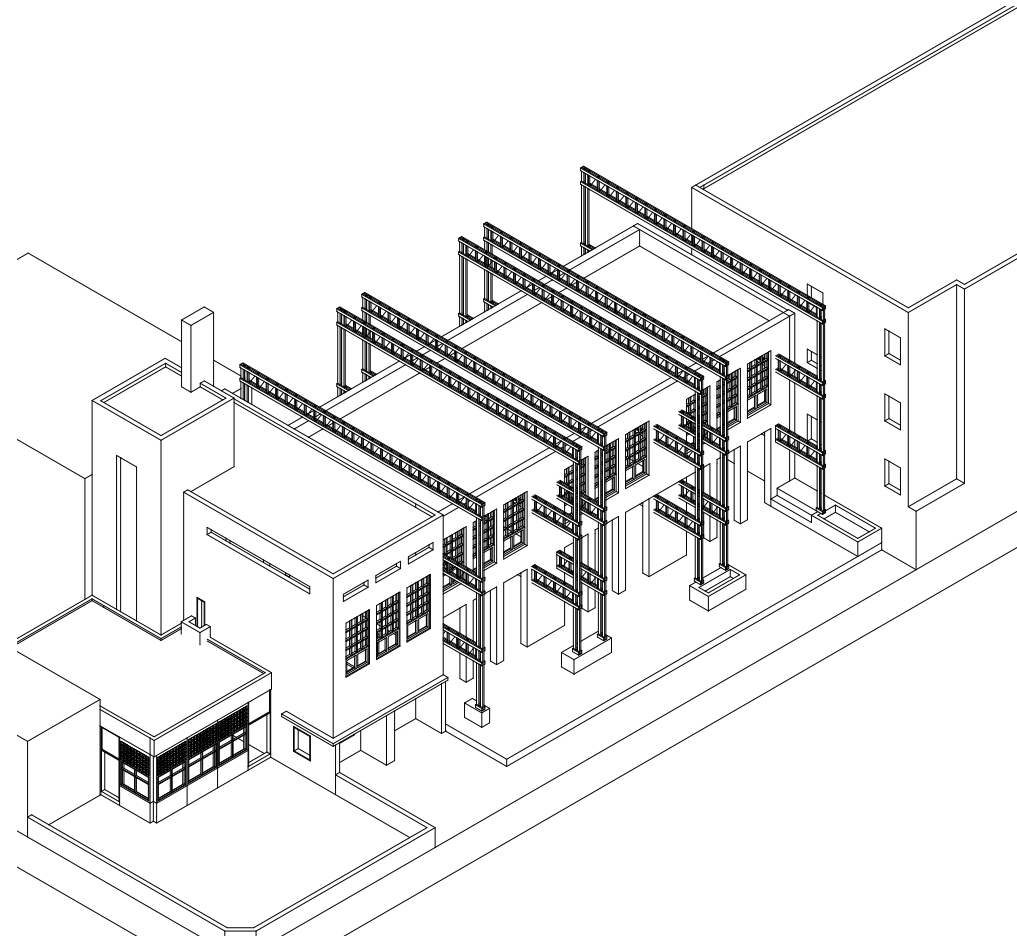
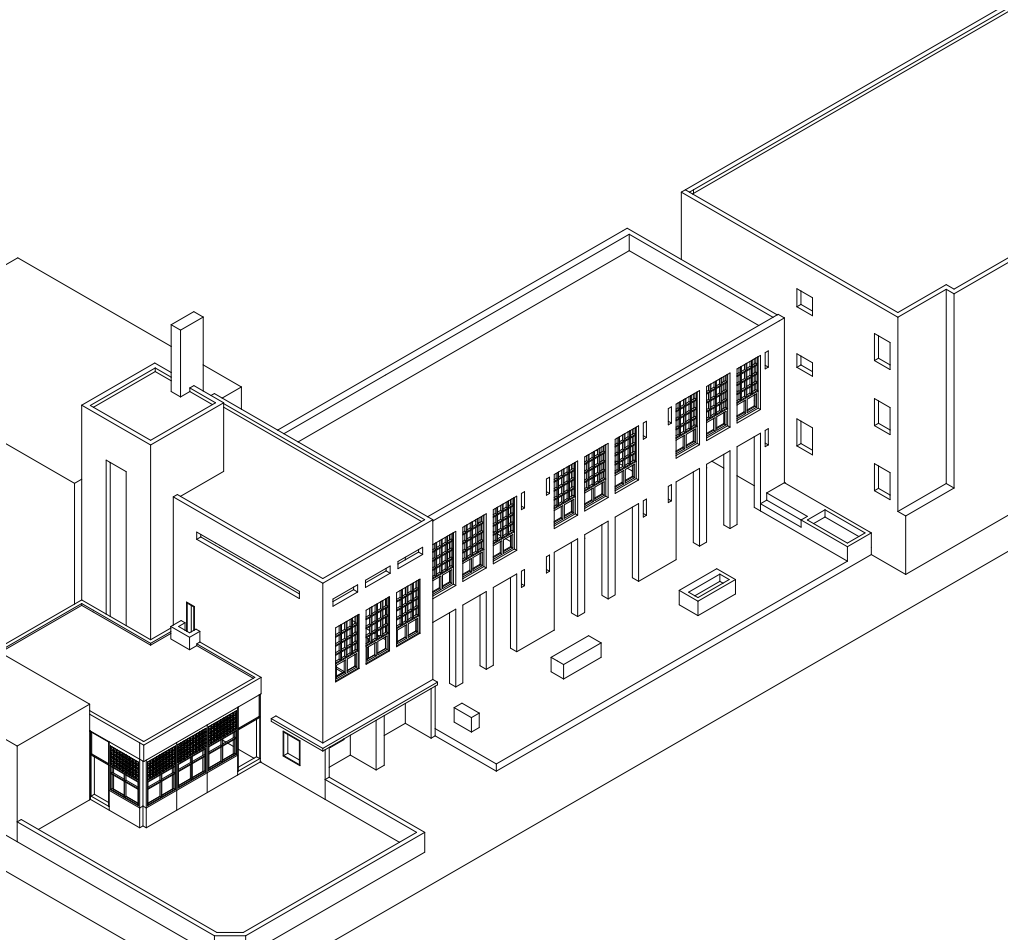
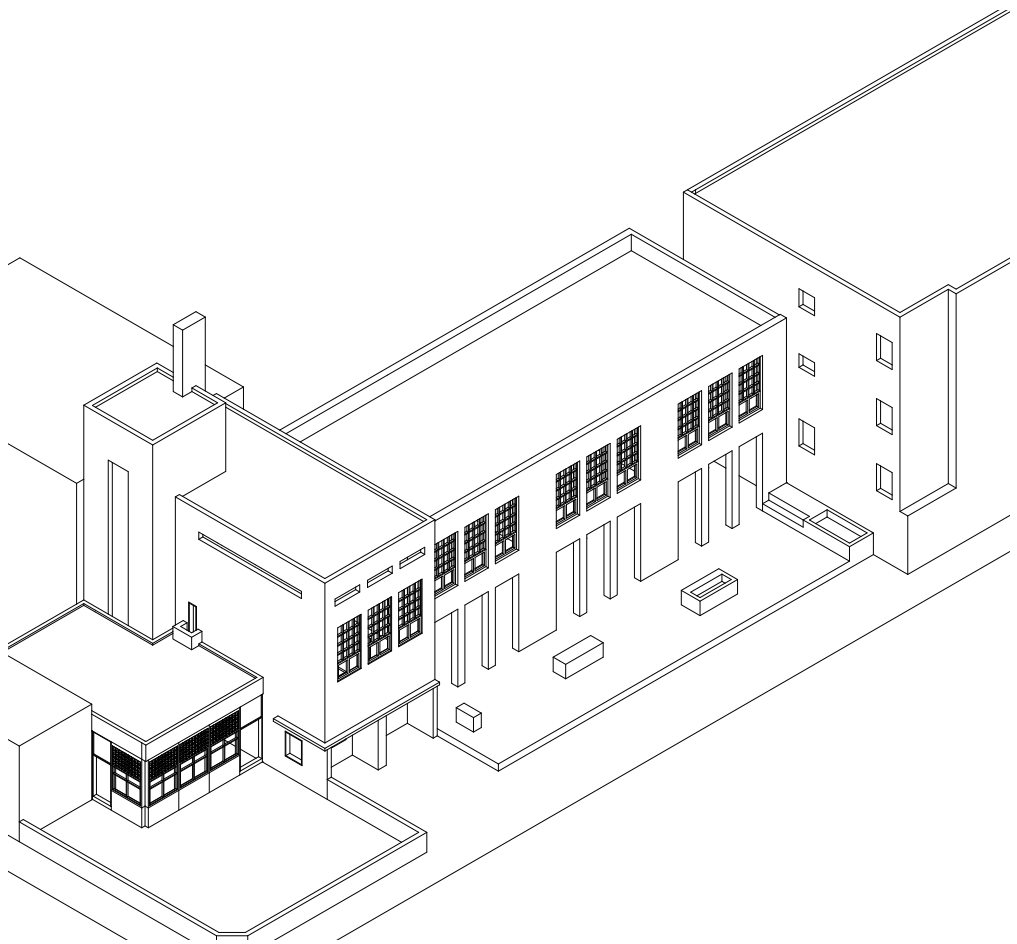
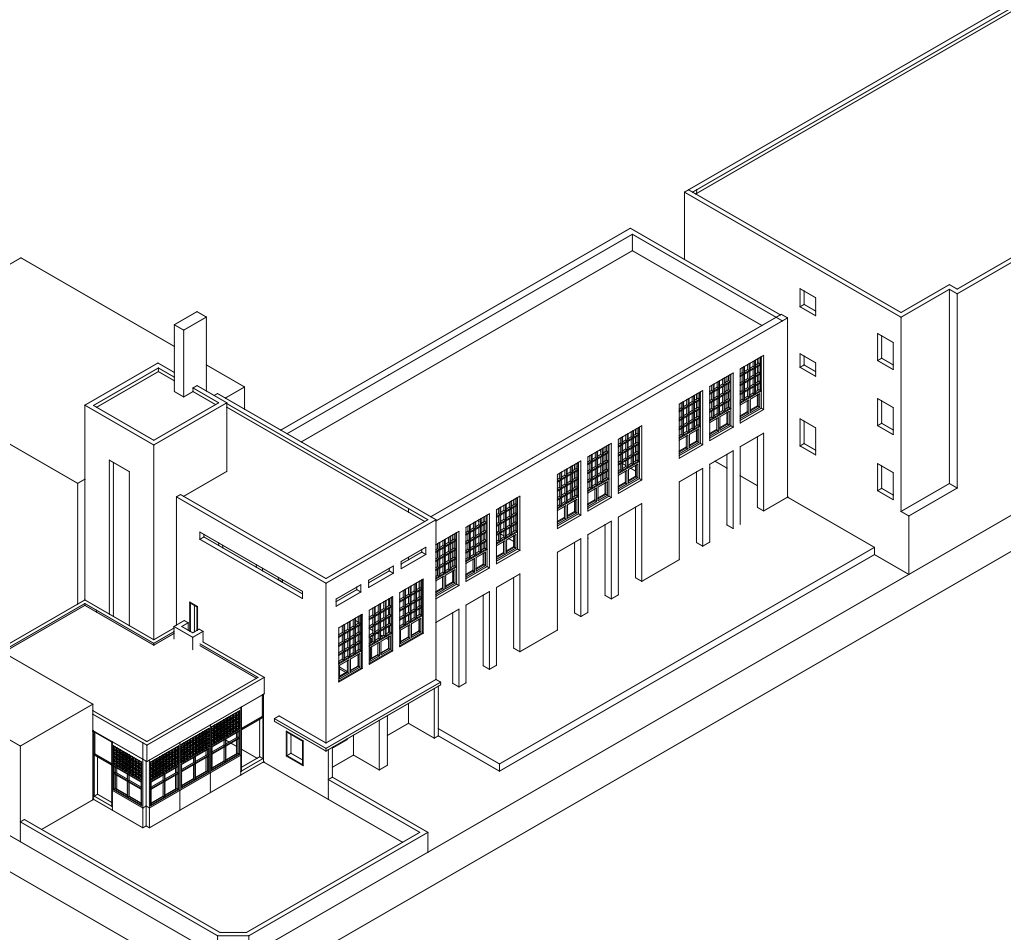
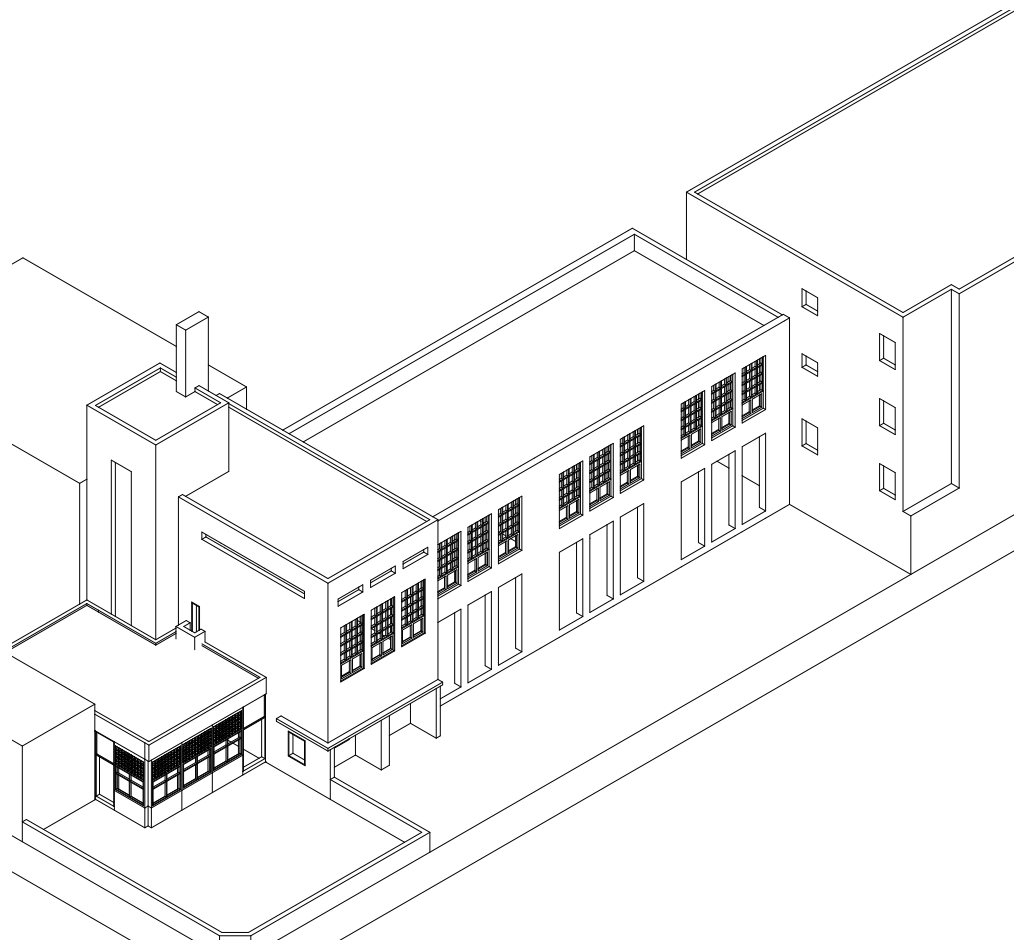
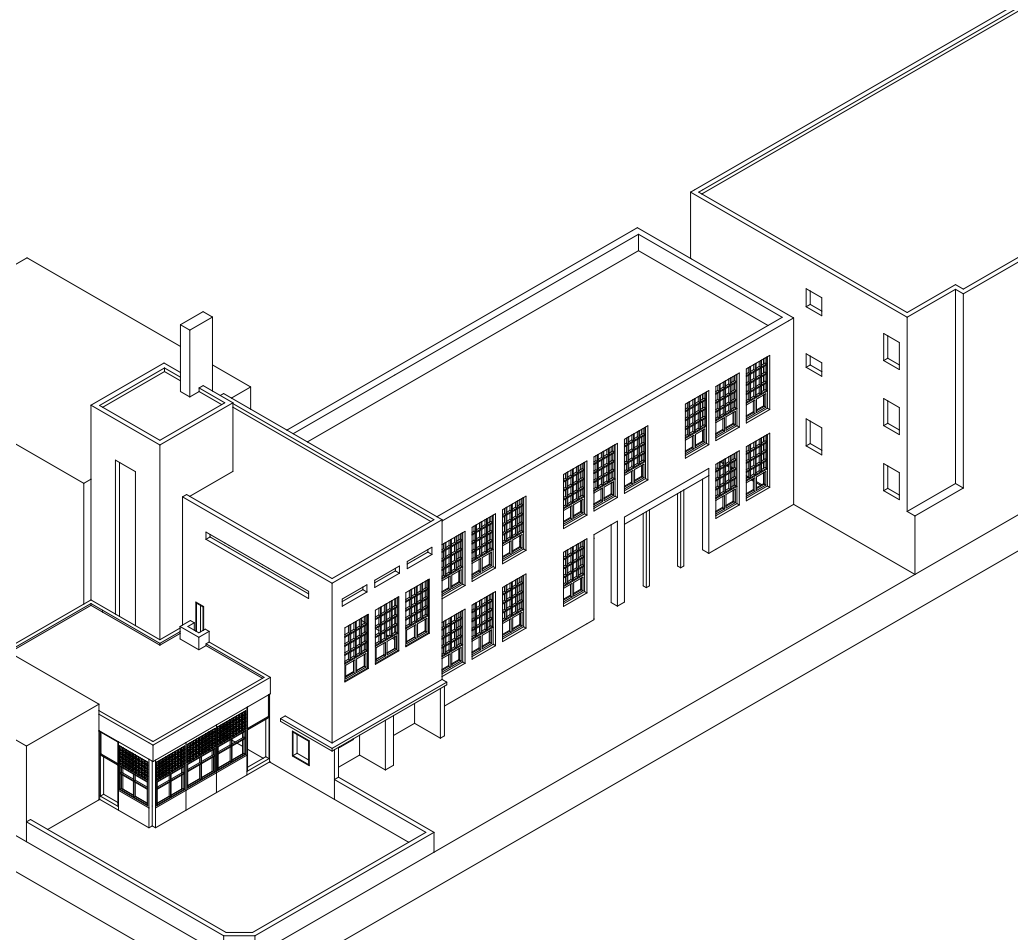
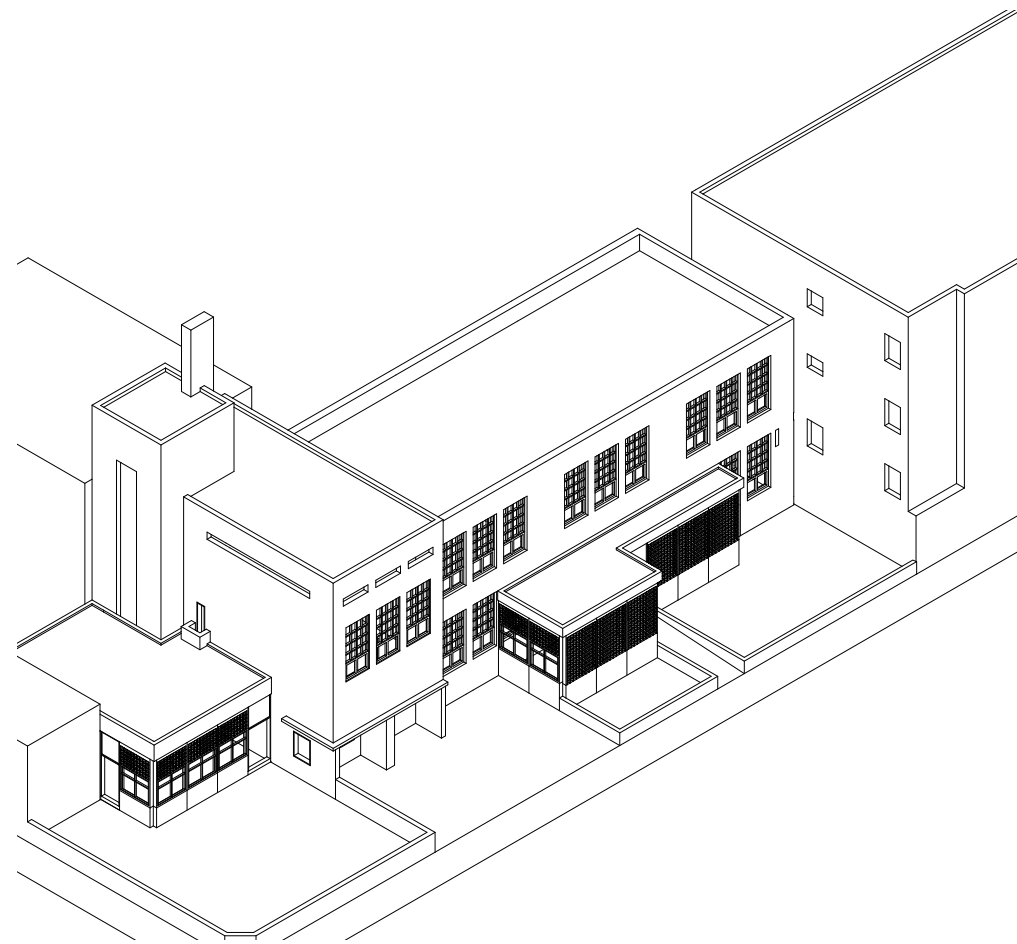
6. covering the rest of the soil with wood chips

7. building the frame structures &

filling them with stones

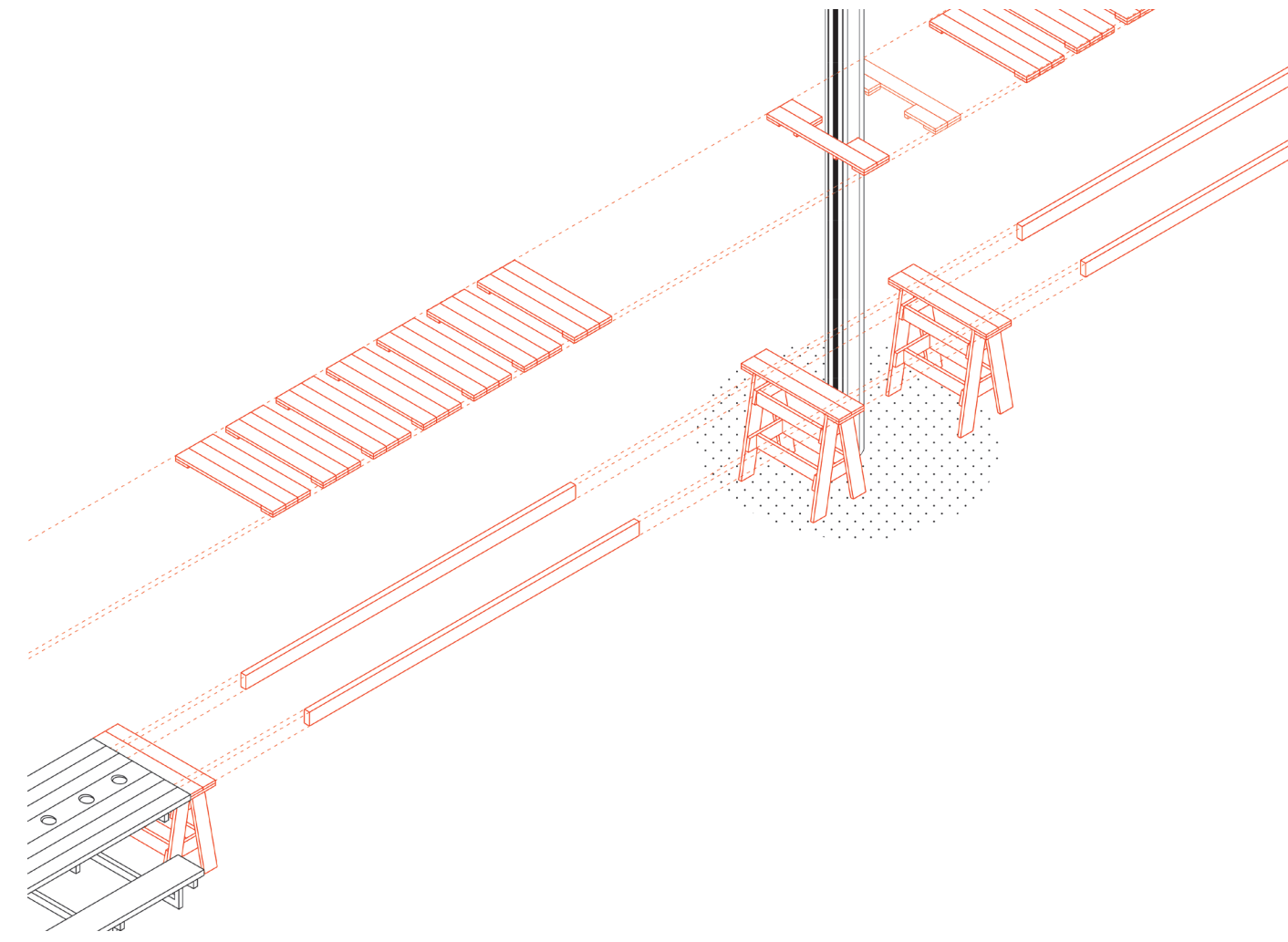
8. sorting out the tiles to prepare for building

9. building the tile walls



BUILDING TIMELINE - IN 11 PARTS

- 1. current situation*
- 2. demolish extension 1*
- 3. take out windows ground floor*
- 4. lay new foundations*
- 5. lay foundations for future columns*
- 6. make holes in the facade (for trusses)*
- 7. add new support structure*
- 8. clad with wood & polycarbonate*
- 9. demolish extension 2*
- 10. lay new foundations*
- 11. finish with green, pergola etc.*



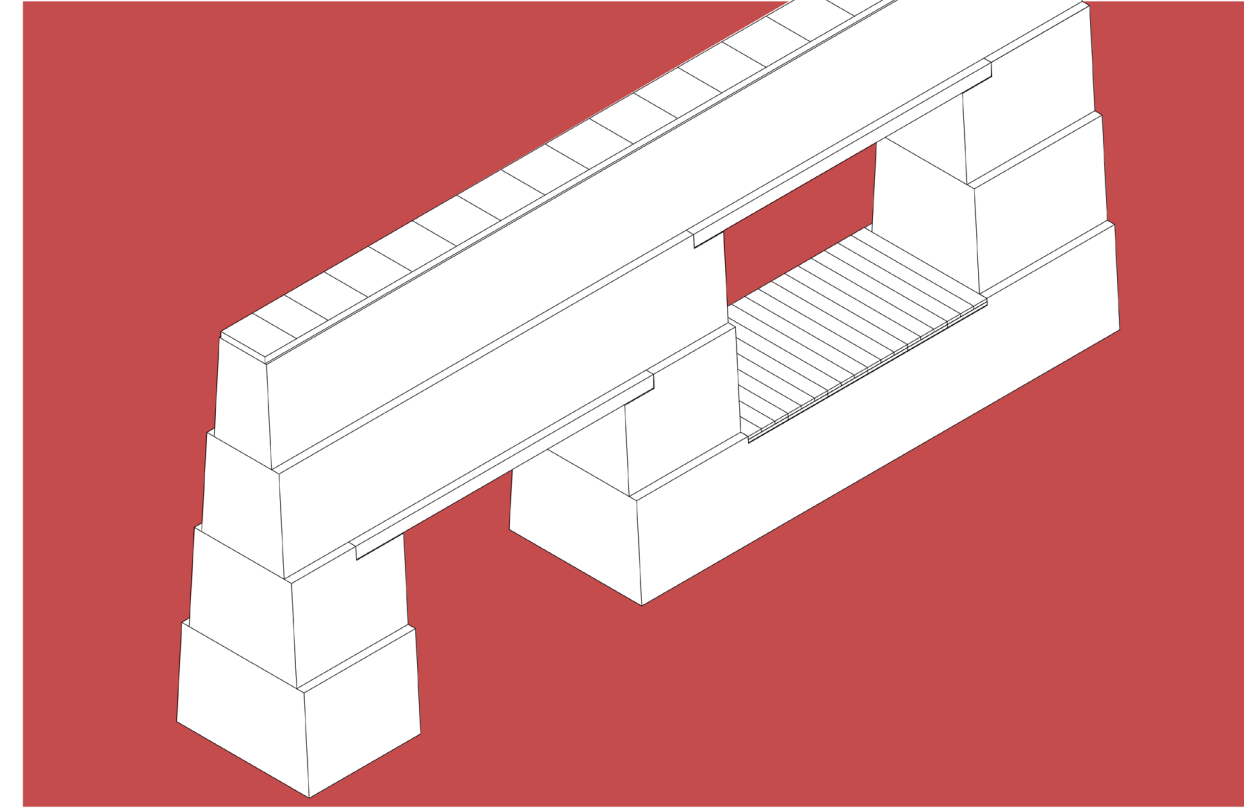
THE PICNIC TABLE

four trestles between the existing tables

wooden beams through the trestles

finished off with wooden planks

a hole for the tree

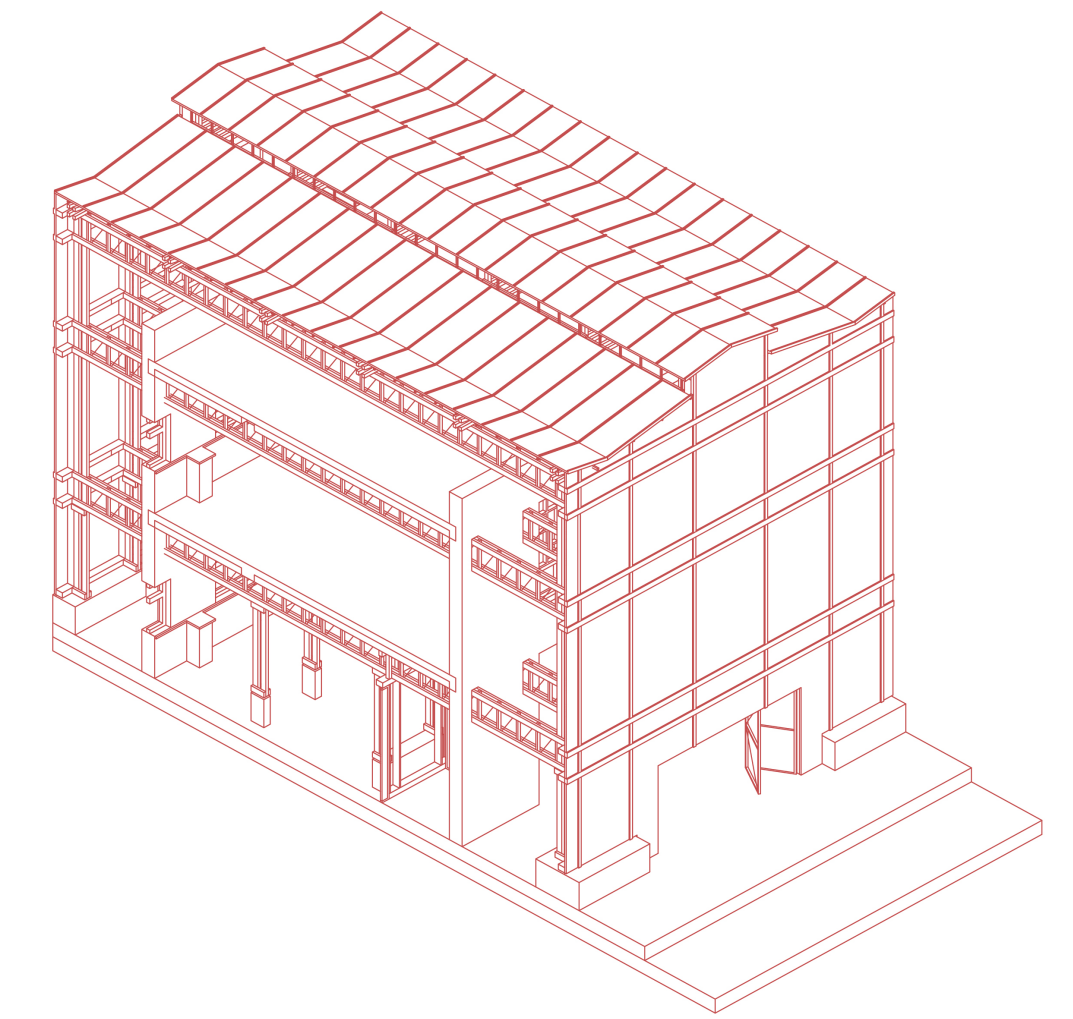


THE TILE WALL

four levels of pavement tiles

opening in wall supported by wooden lintel

opening in wall finished with wooden planks

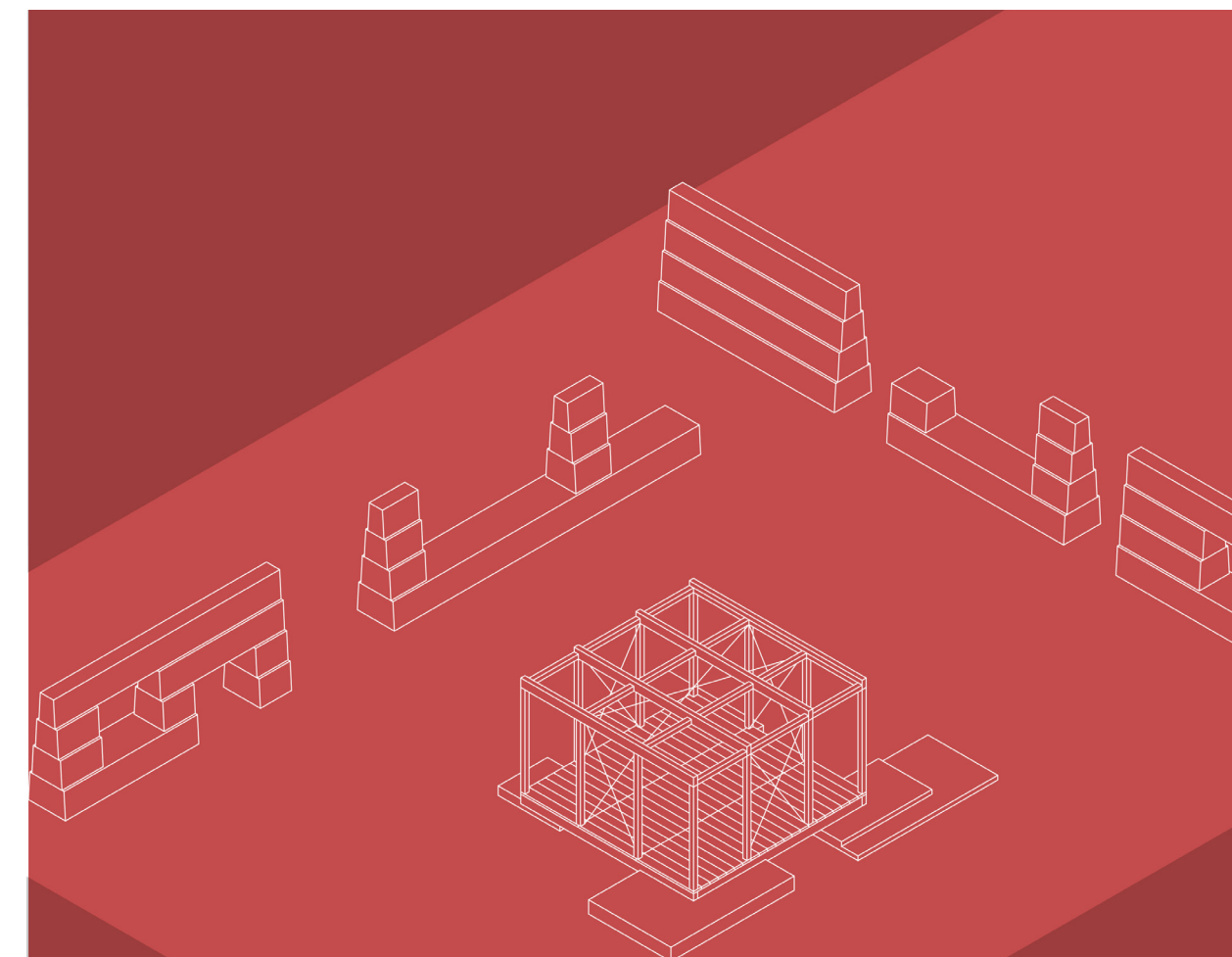
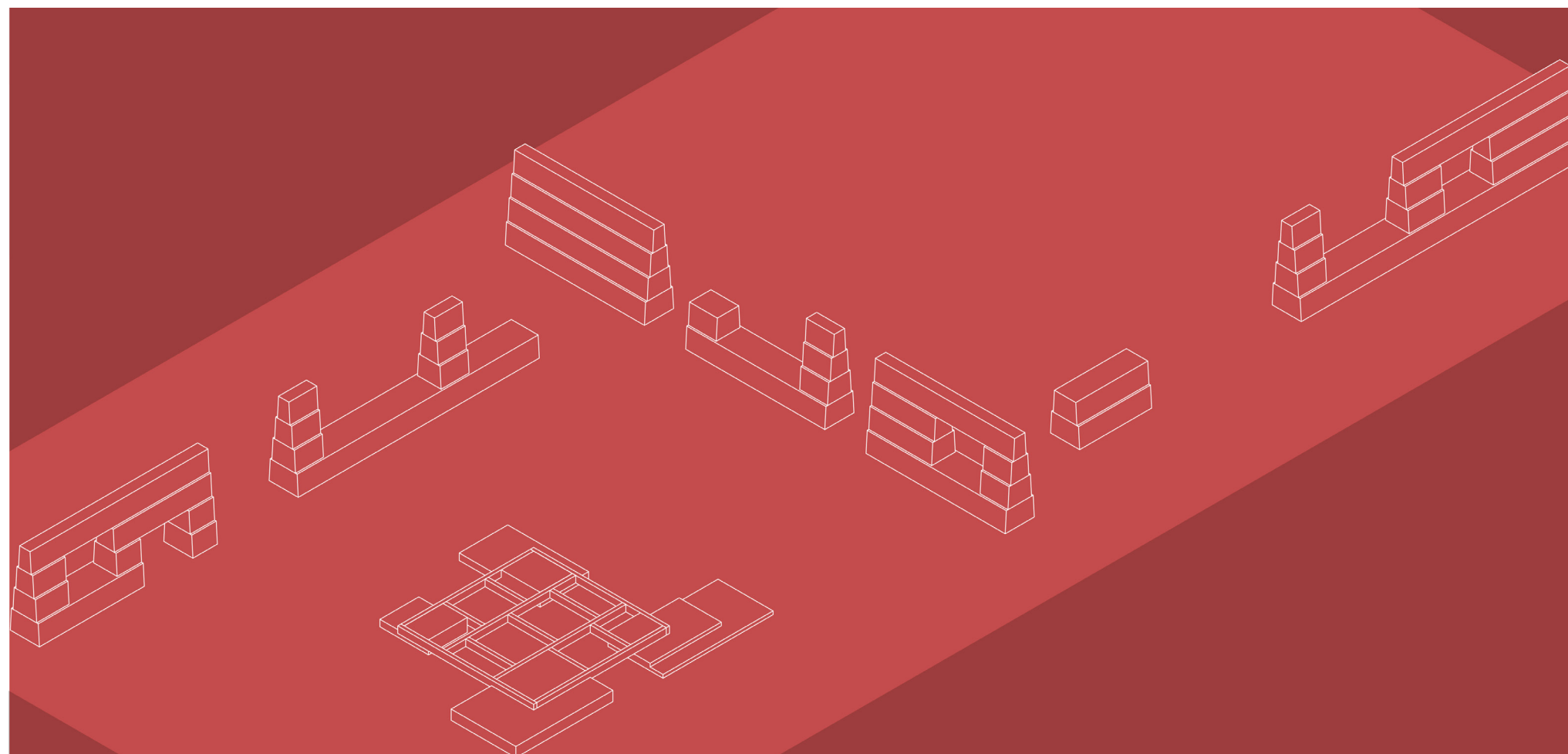
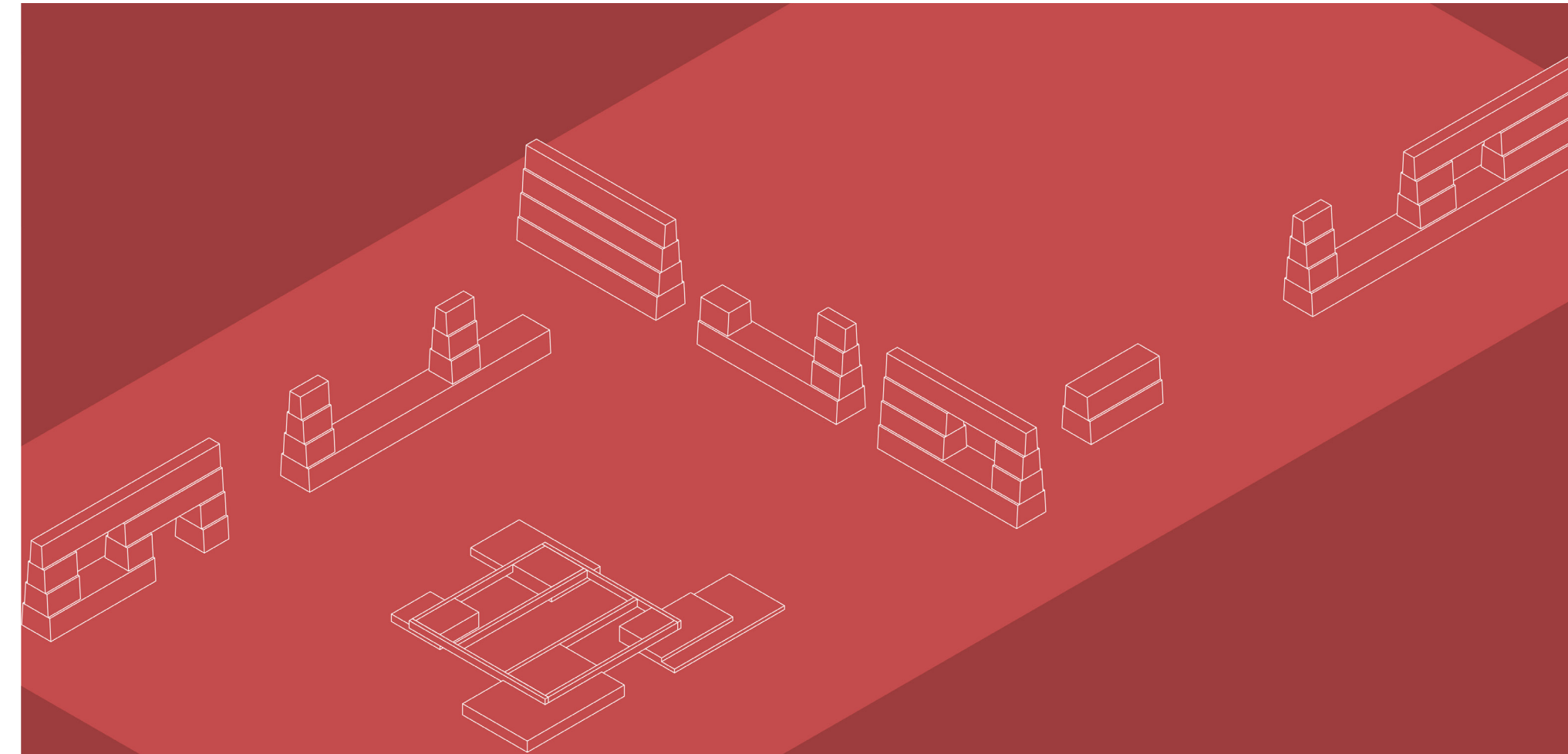
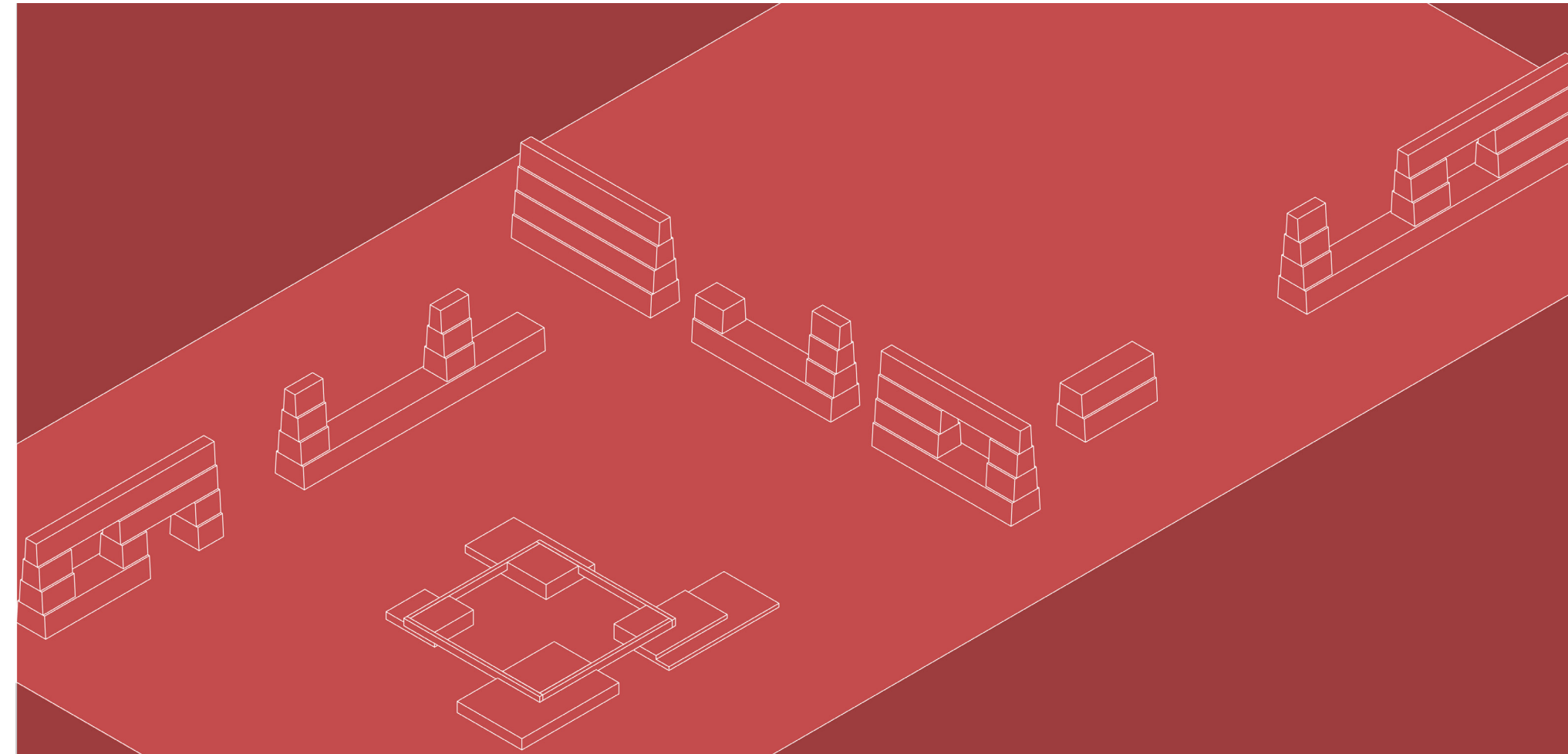


THE BUILDING

wooden trusses as extra support structure

greenhouse as buffer zone

double truss to provide in-between spaces



A TEMPORARY PAVILION TIMELINE - IN 6 PARTS

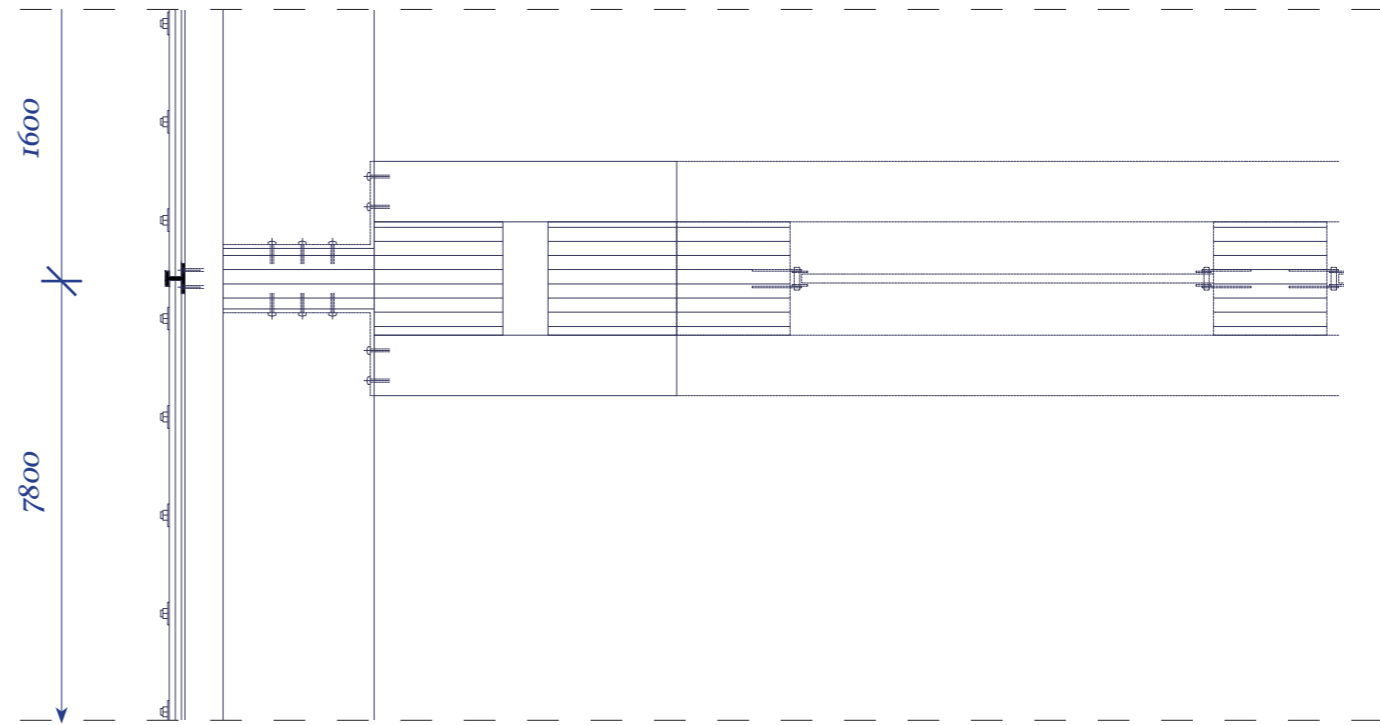
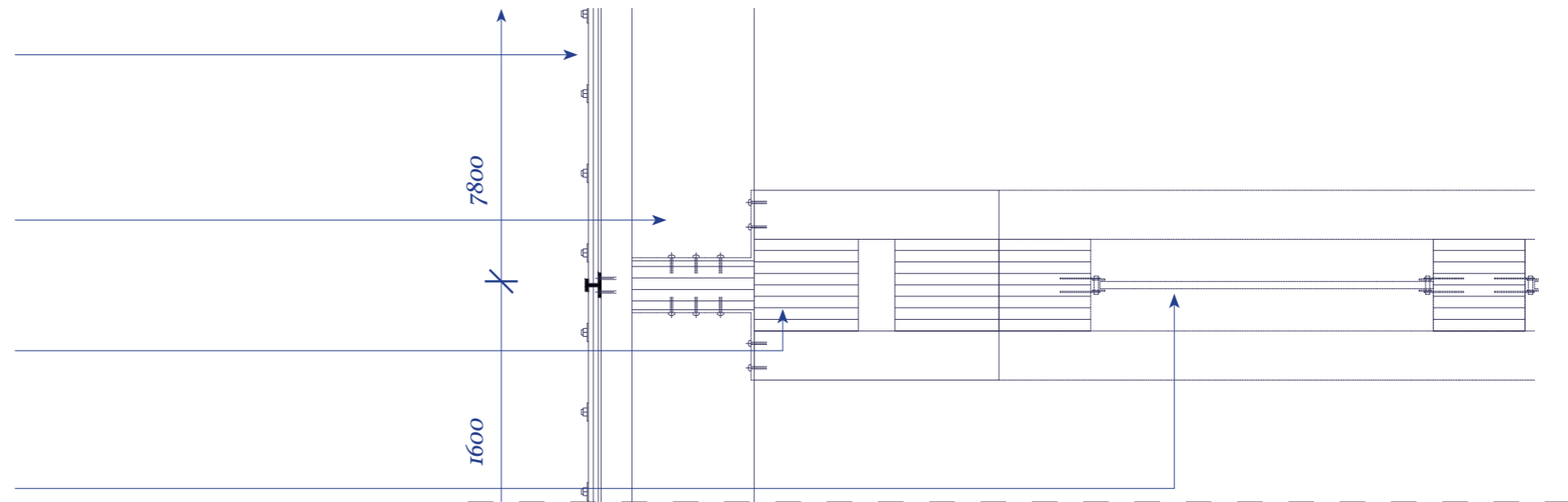
- 1. four concrete volumes in the park*
- 2. connected with wooden beams (4x4m)*
- 3. strengthened with wooden beams (x)*
- 4. strengthened with more wooden beams (y)*
- 5. made into a floor*
- 6. a pavilion built on top of this base*

polycarbonate panels 16mm*2500*1400mm
held in place by galvanized steel frame

laminated wood beam and frame 200*60mm attached to
truss with steel L brackets

laminated wood truss 900*300 mm
paired at 1600mm apart spaced at 7800 mm

steel tension cable attached to fitch plate



polycarbonate panels 16mm*2500*1400mm
held in place by galvanized steel frame

2x laminated wood column 170*150mm
attached

polycarbonate panels 16mm*900*1400mm
held in place by galvanized steel frame

laminated wood beam 200*60mm
attached to truss with steel L brackets

laminated wood truss 900*300 mm
paired at 1600mm apart spaced at 7800 mm

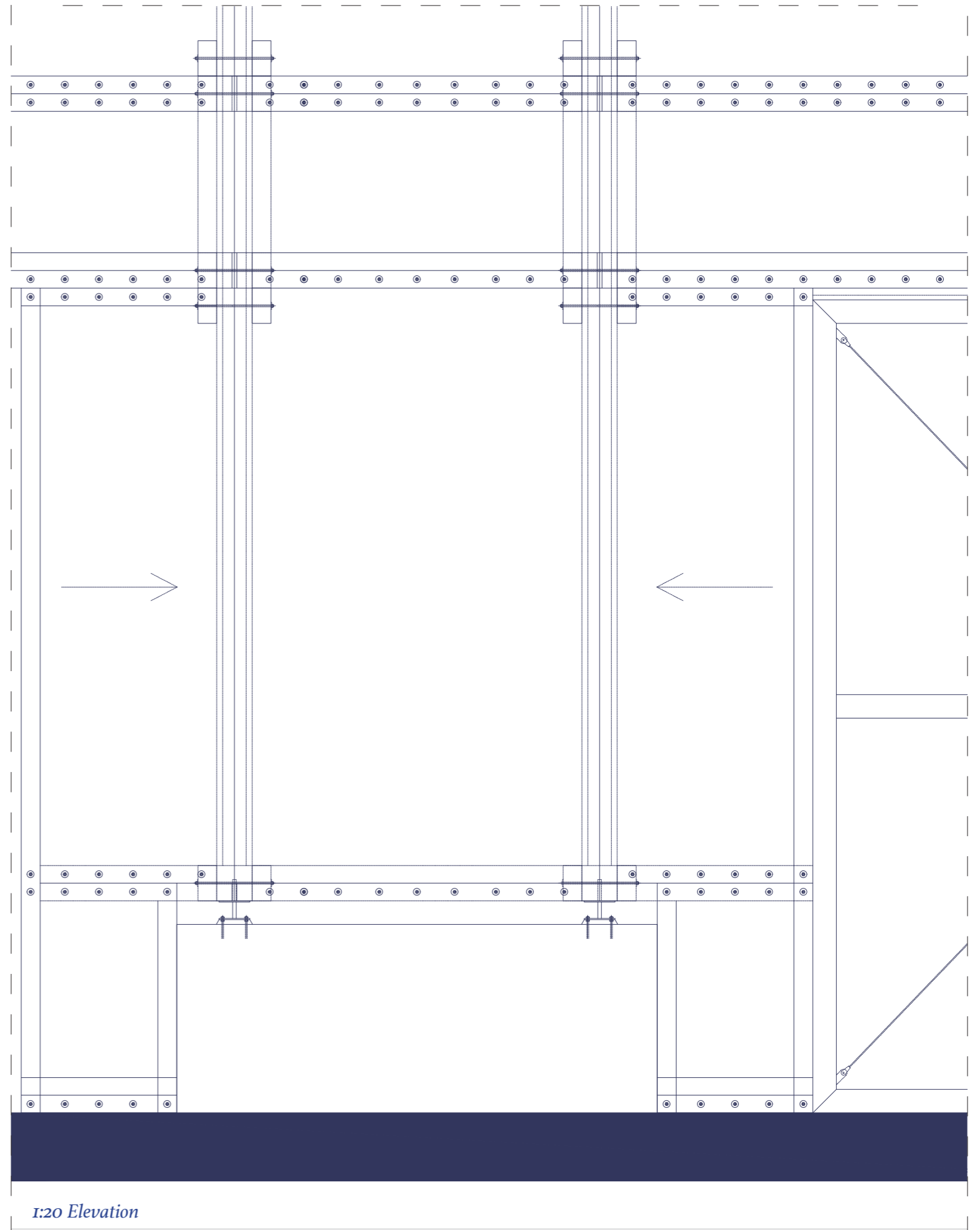
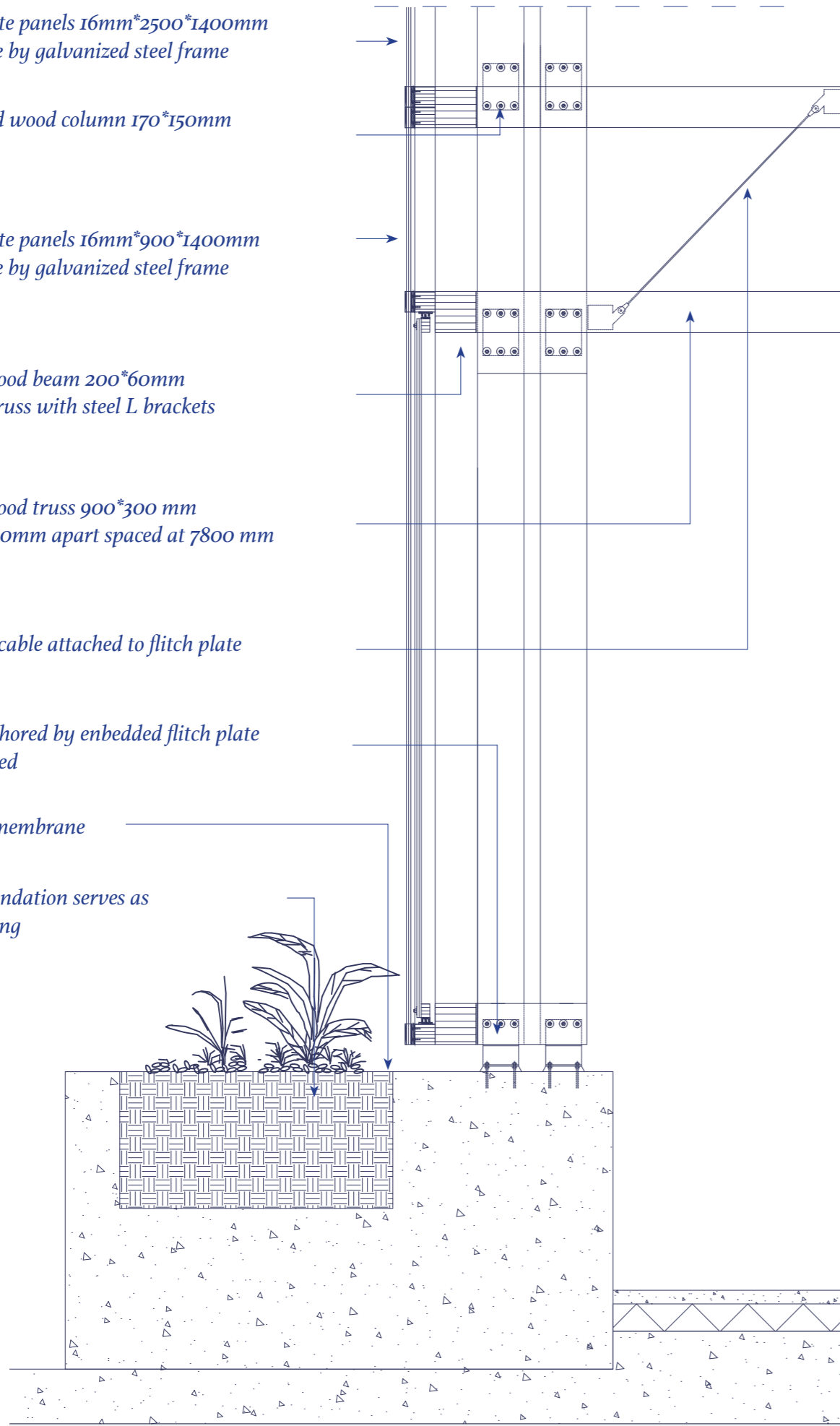
steel tension cable attached to flitch plate

columns anchored by embedded flitch plate
through bolted

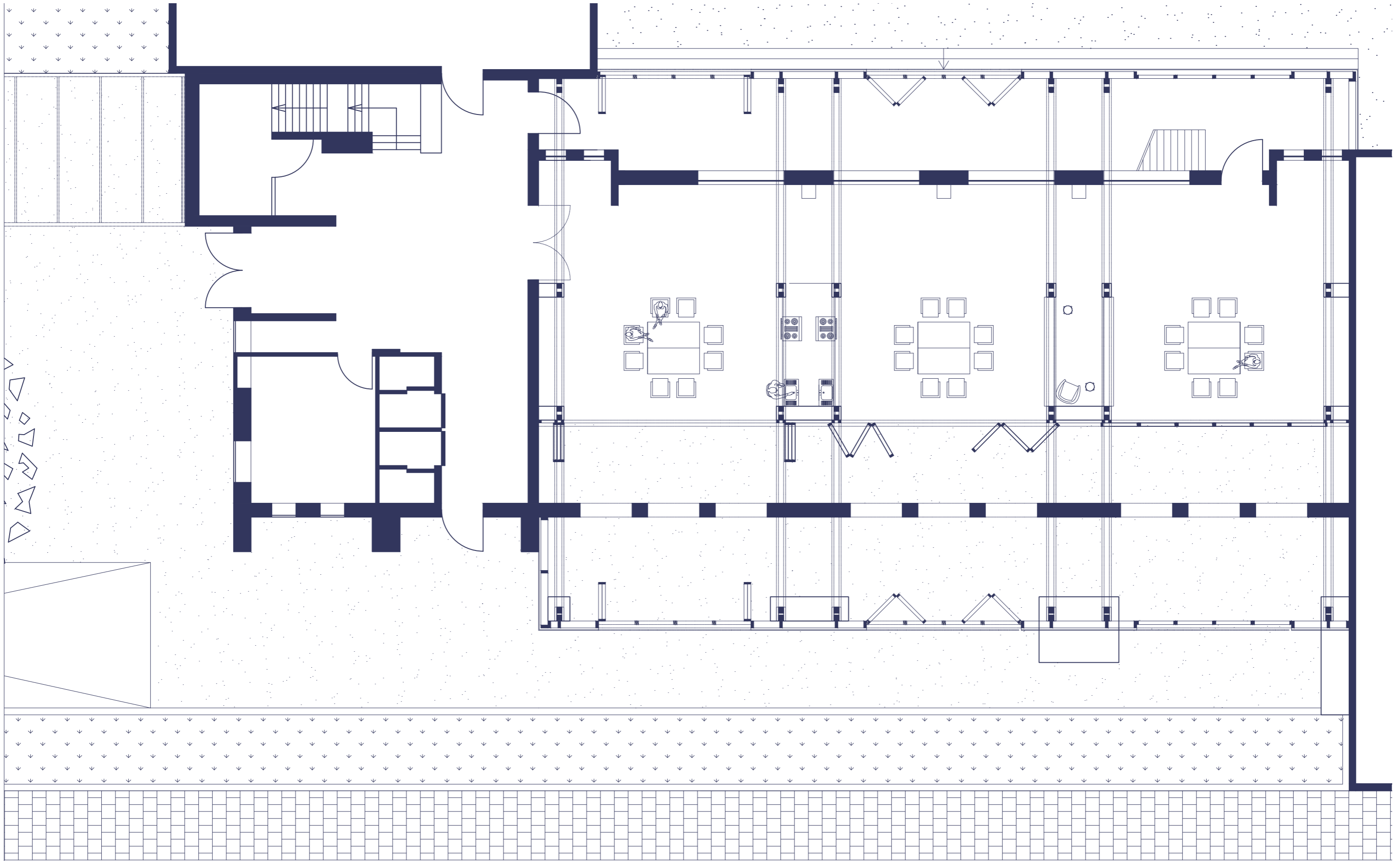
waterproof membrane

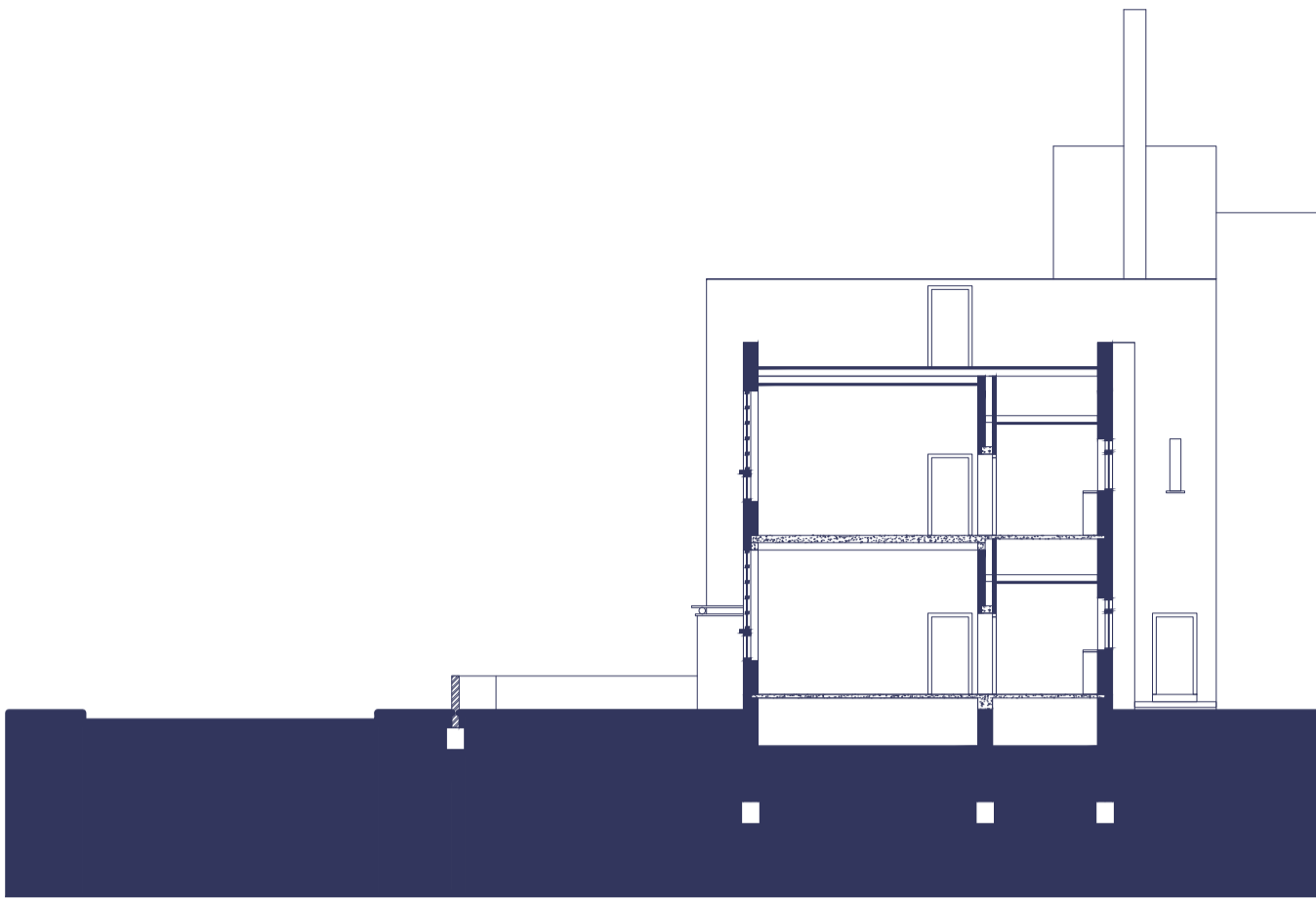
extended foundation serves as
planter/seating

1:20

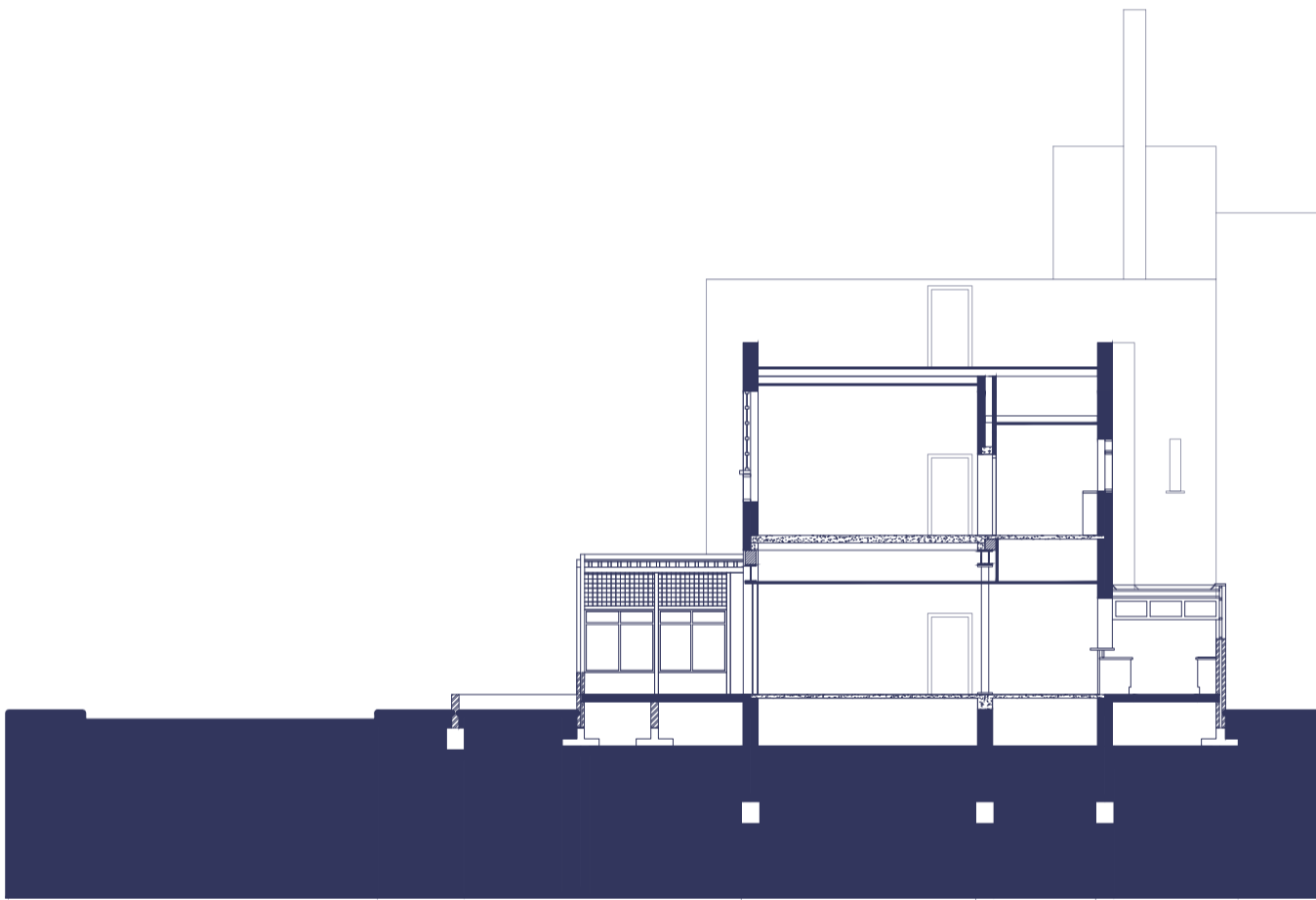


1:20 Elevation

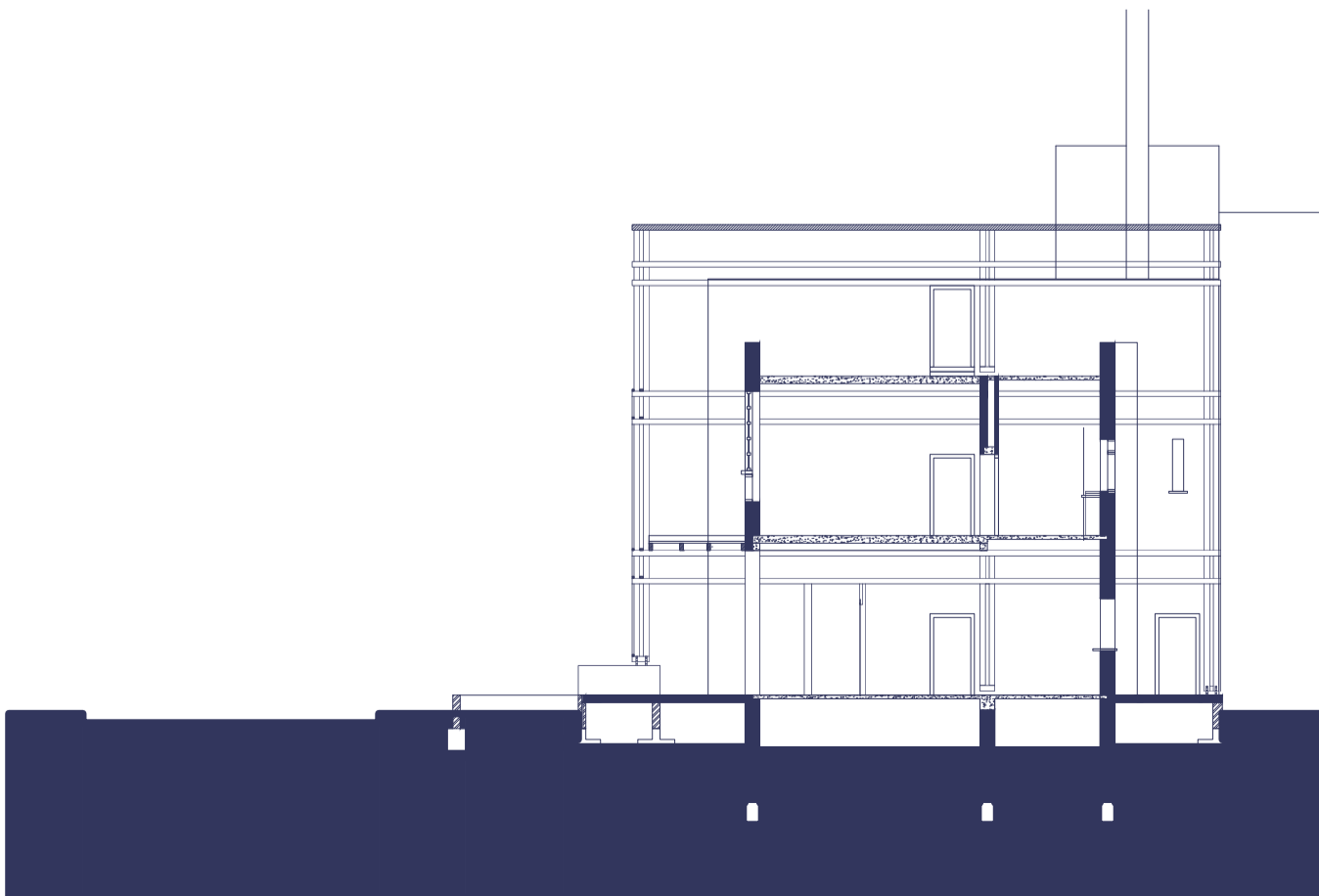




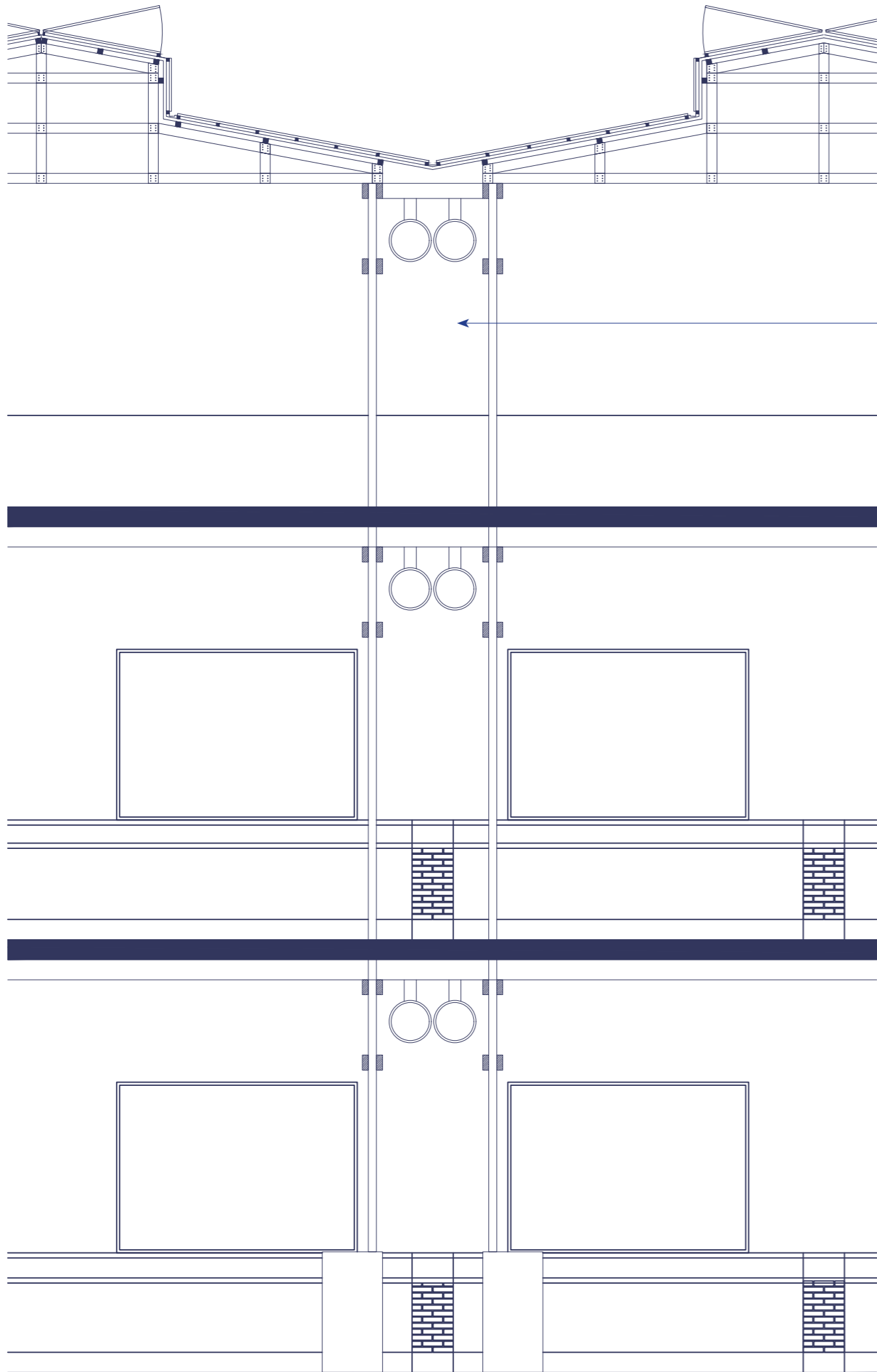
1:200 section original building



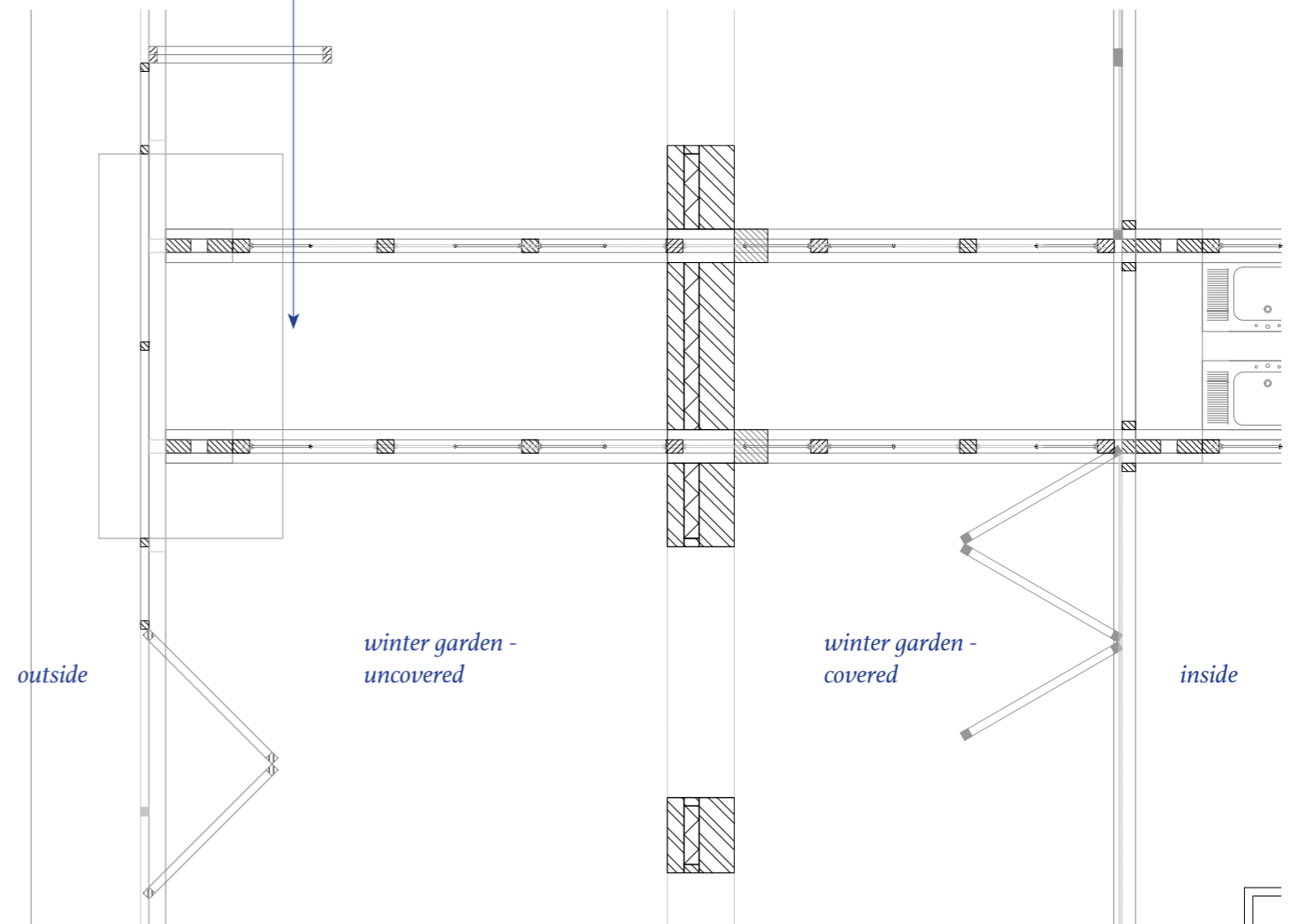
1:200 section after renovations

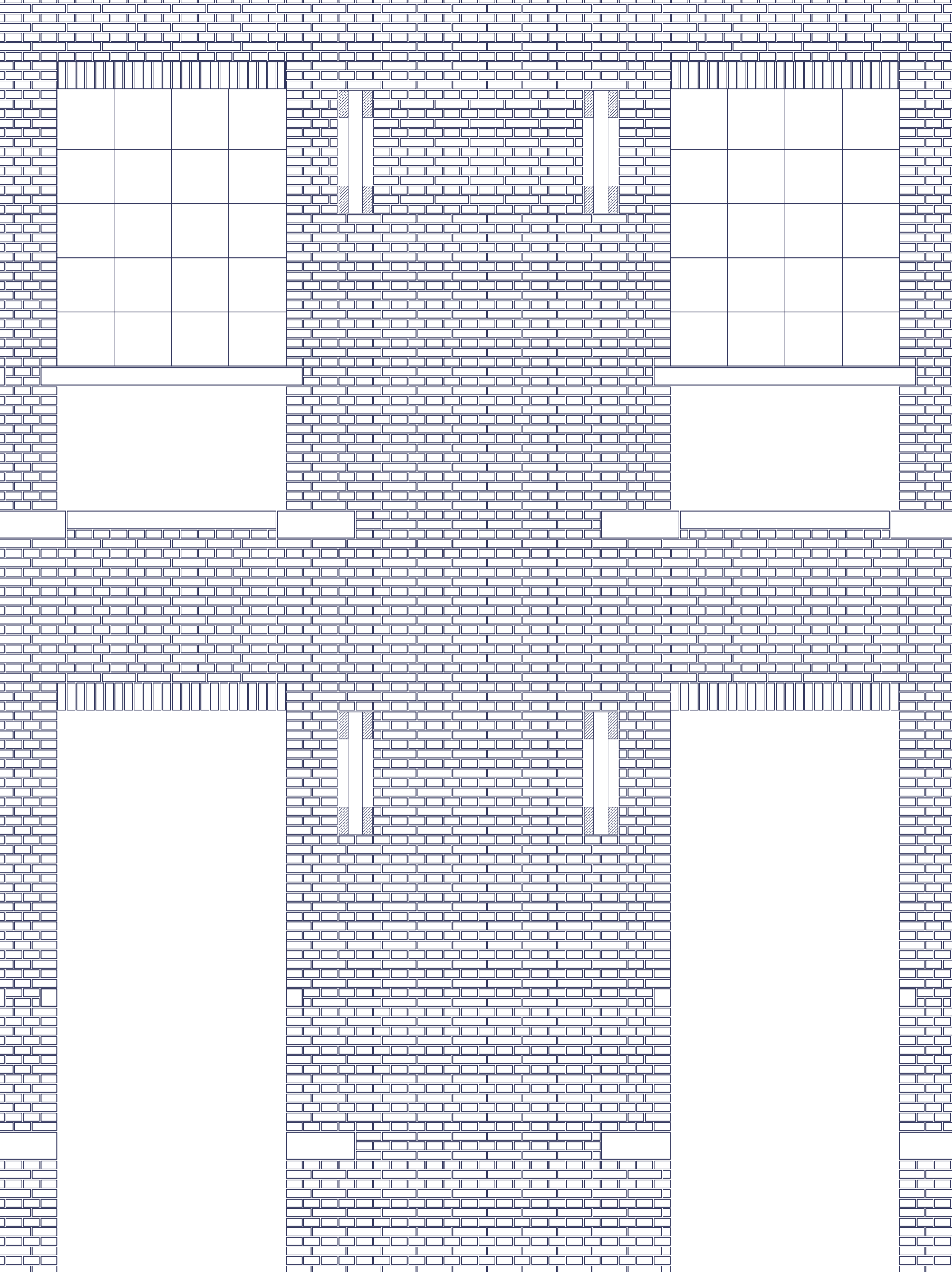


1:200 section with proposed interventions



space between trusses serves as both consolidating shafts and other installations, and as a framework to more easily adapt the space in the future





*operable polycarbonate roof panels 16mm*2500*1400mm
held in place by galvanized steel frame*

zinc ridge cap

*wood spacer studs 60*60mm*

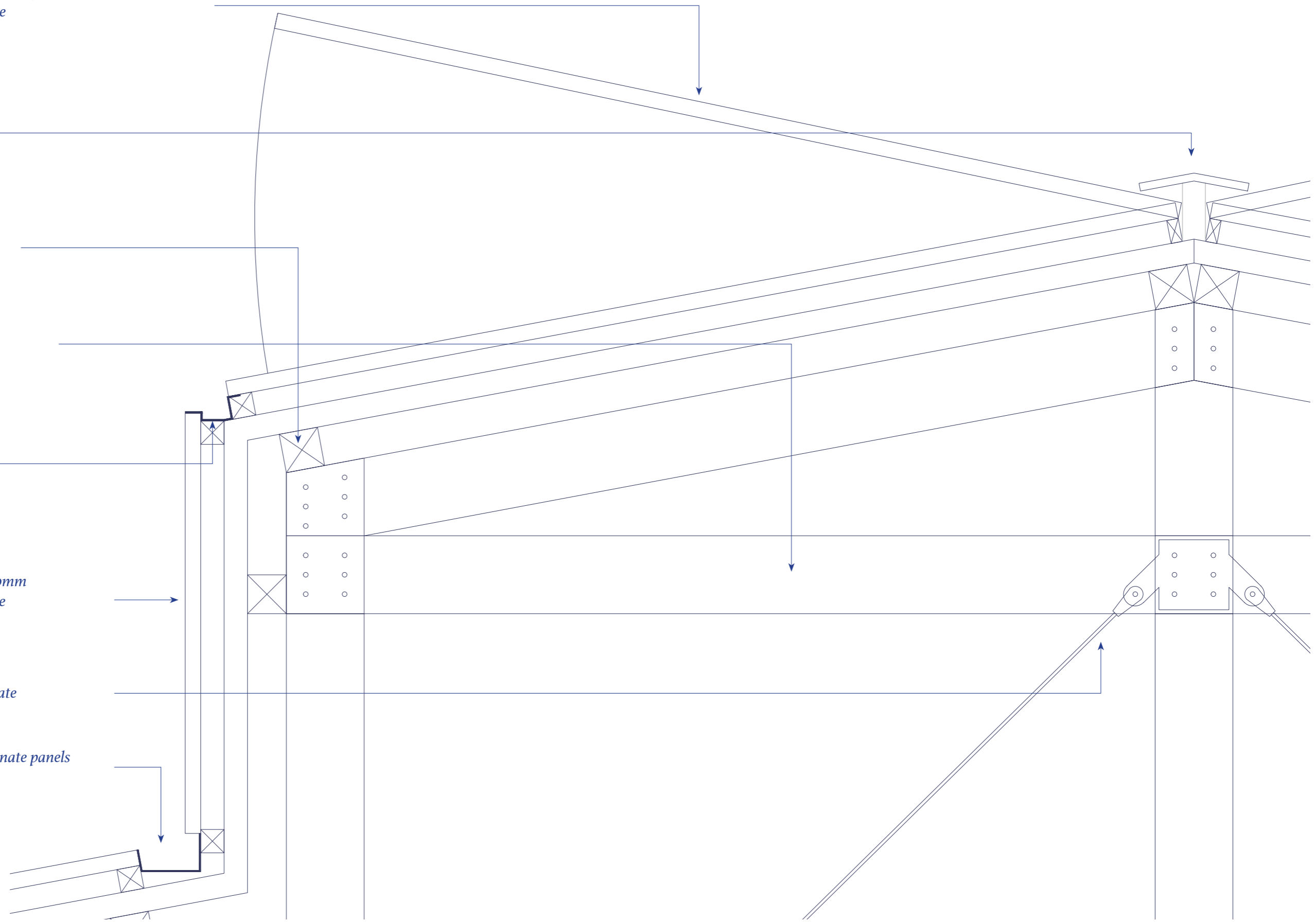
*laminated wood A-frame 7800mm
spanning between trusses*

*zinc gutter
mounted on spacer studs*

*polycarbonate panels 16mm*500*1400mm
held in place by galvanized steel frame*

steel tension cable attached to flitch plate

zinc gutter mounted behind polycarbonate panels



special tile on top to squeeze other tiles in place

anti-root cloth to hold the two sides together

wooden beams as lintel

wooden planks as finish & to hold everything in place

gabion basket as internal frame & support

