

BORUI XIONG BEFORE OBLIVION.

PLACE & MEMORY
SASKIA DE WIT, ALEKSANDAR STANICIC

RESEARCH
QUESTION
How to reveal the value of
post-war ruins in modern
society while maintaining
their ruinous qualities?

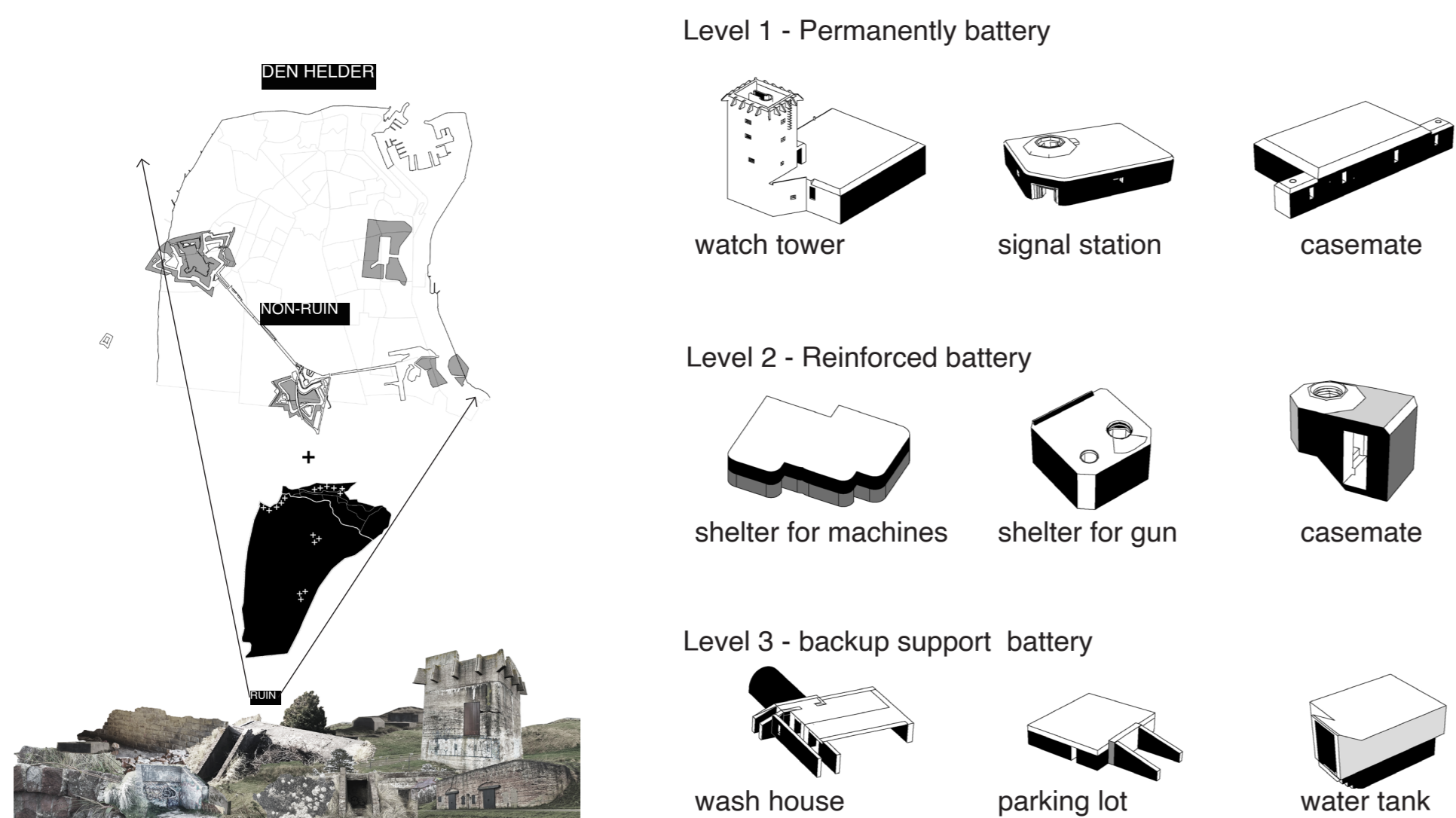
PROJECT DESCRIPTION

This project explores the intertwined relationship between Atlantic wall ruins and Den Helder, focusing on the history and memory associated with these ruins. The design focuses on the decaying process and ruinous qualities, considering historical function, landscape context, spatial characteristics, materiality, and sustainability.



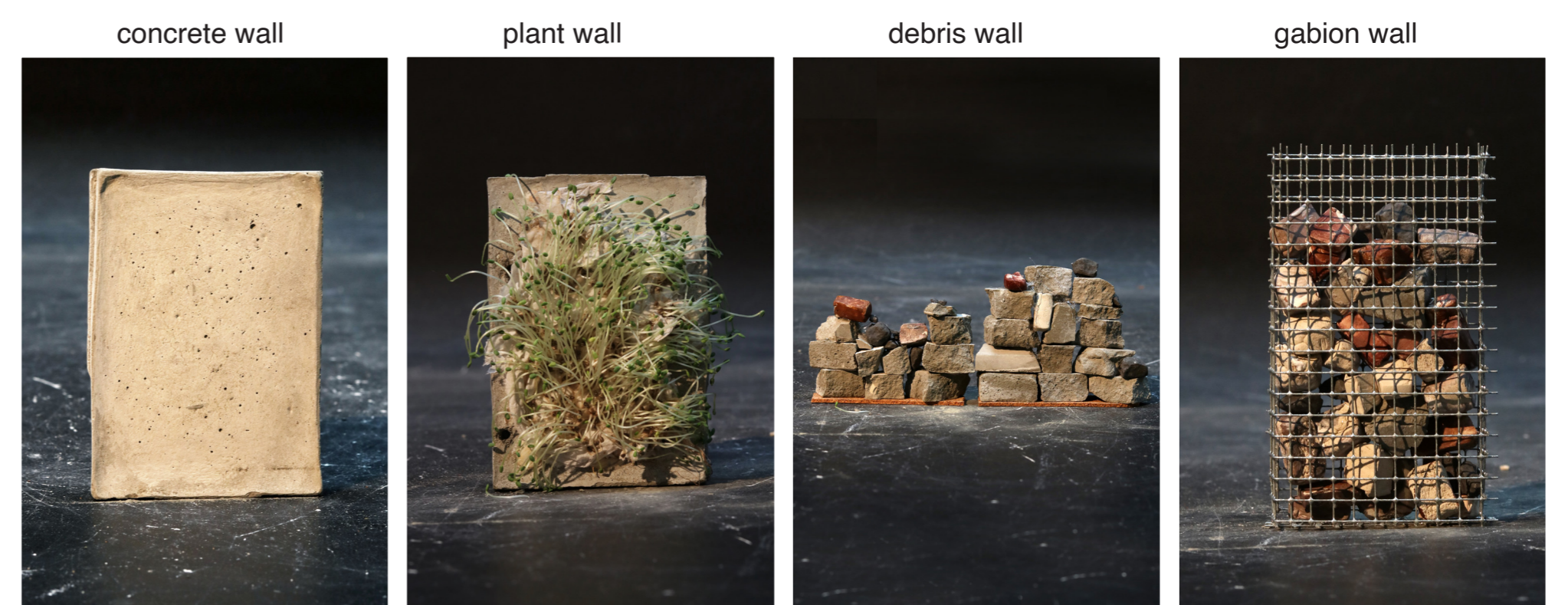
ATLANTIC WALL RUINS TYPOLOGY

The Atlantic Wall is built up very systematically at three levels, depending on the functions. The idea is to make decaying ruins as the living ruin dynamics that echos with the historical context and modern city of Den Helder.



ECHOES OF ATLANTIC WALL RUINS

The Atlantic Wall ruins are the last witnesses to this period of history, echoing the past with their unique language. Three different ruin languages are emphasised, guiding people through history, engaging with the decay process, and accepting that the ruins will eventually disappear.

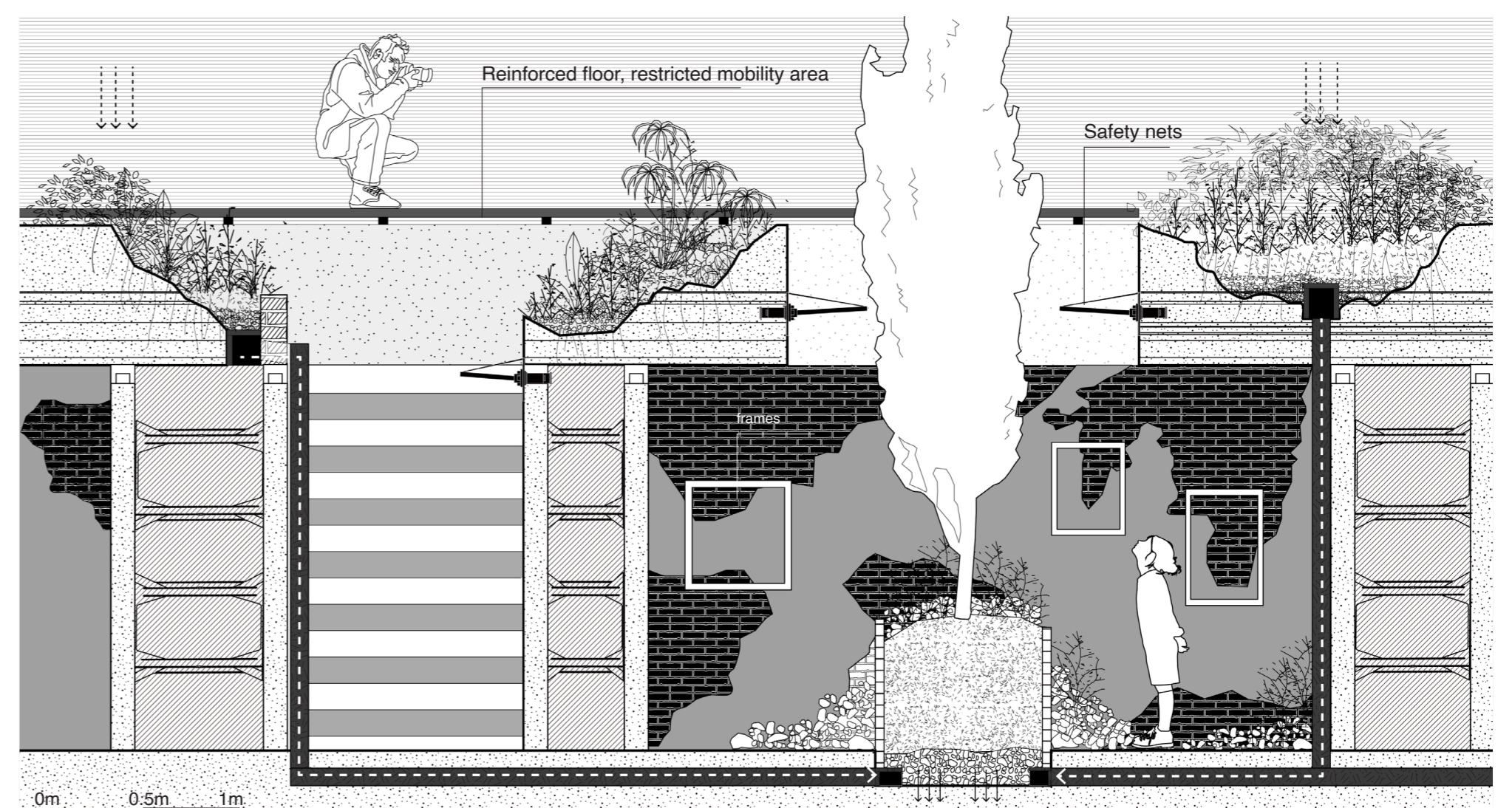
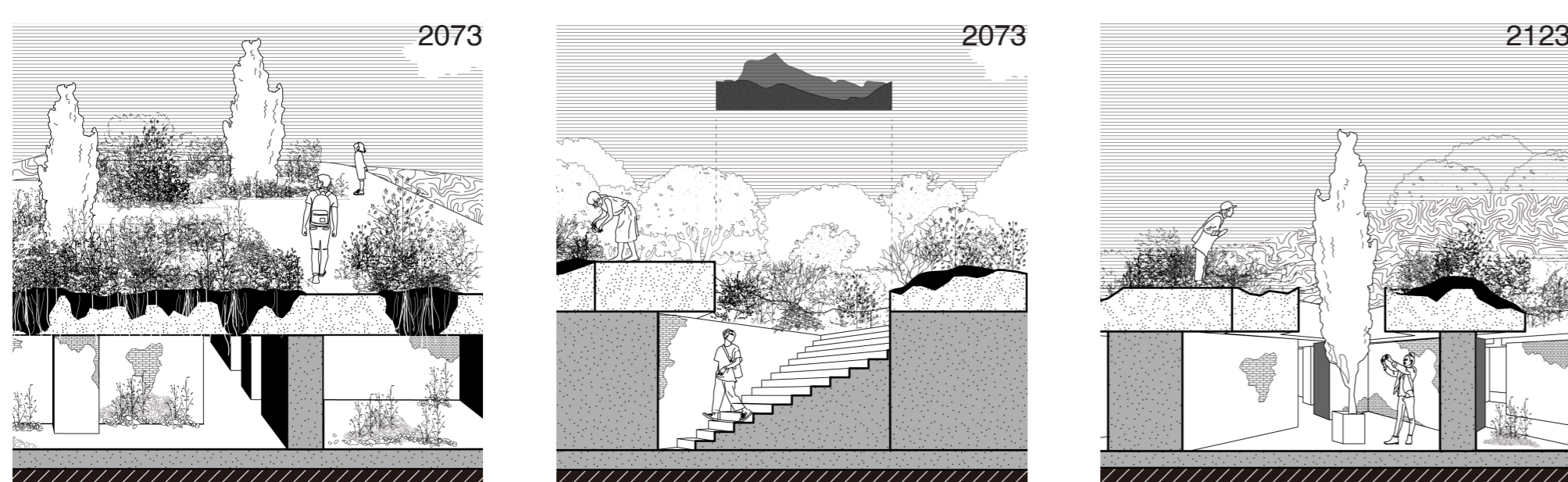


CONCEPTUAL TYPOLOGY

Based on the ruin languages, construction methods used for the Atlantic wall, the conceptual proposal would be to use these four types of new walls to highlight these ruins qualities and reveal their values.

INTERVAL INTERVENTIONS

Interval interventions in the bunkers will influence the process of plant invasion, enable inaccessible bunkers to reappear and establish a connection with their surroundings. This process also allows people to participate in the decay process and gradually become aware of the beauty of the ruins.



CONSTRUCTION DETAILS

The connection between people and ruins is established while also taking into account relevant practical factors such as safety, functionality, etc.