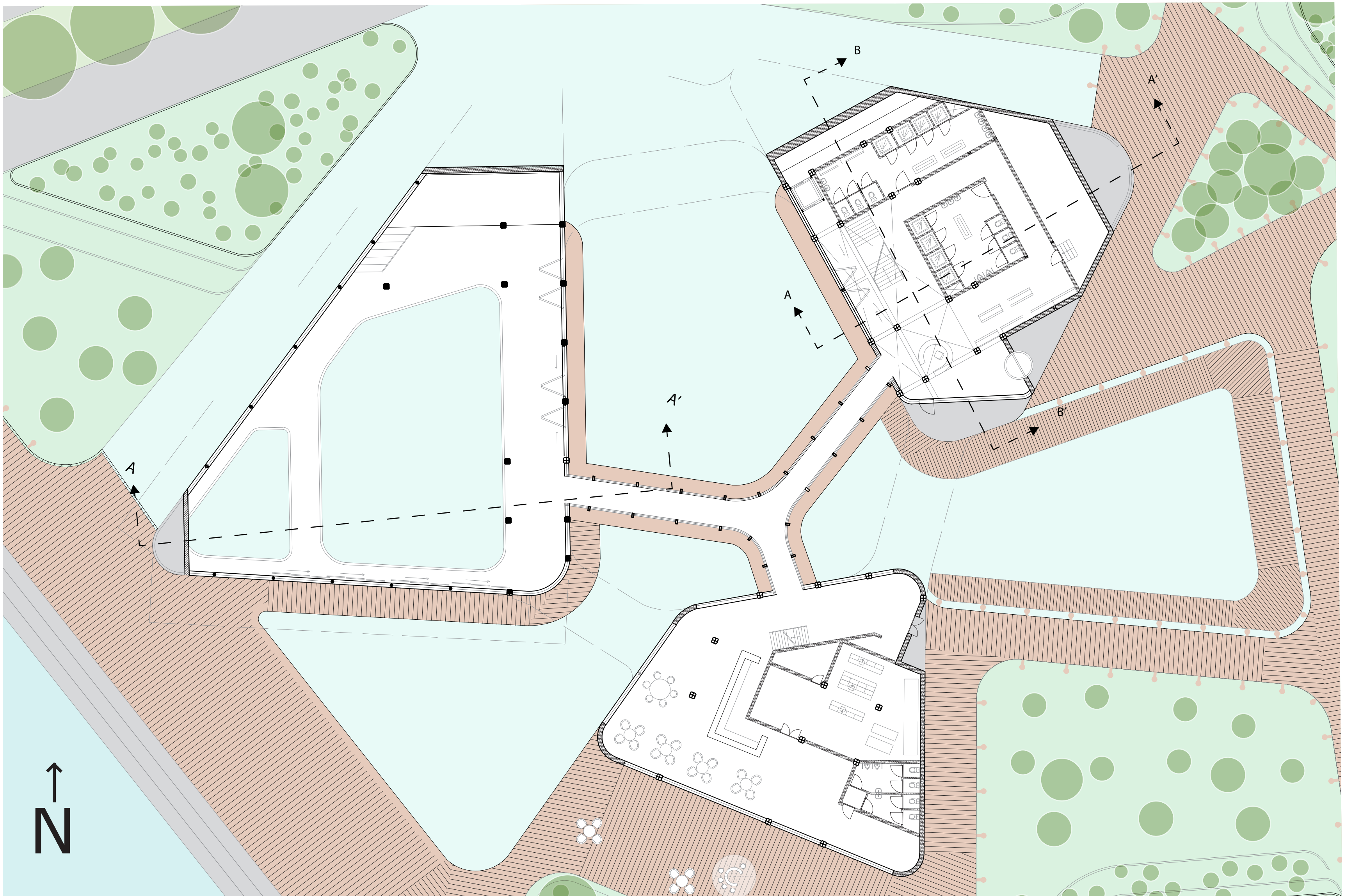
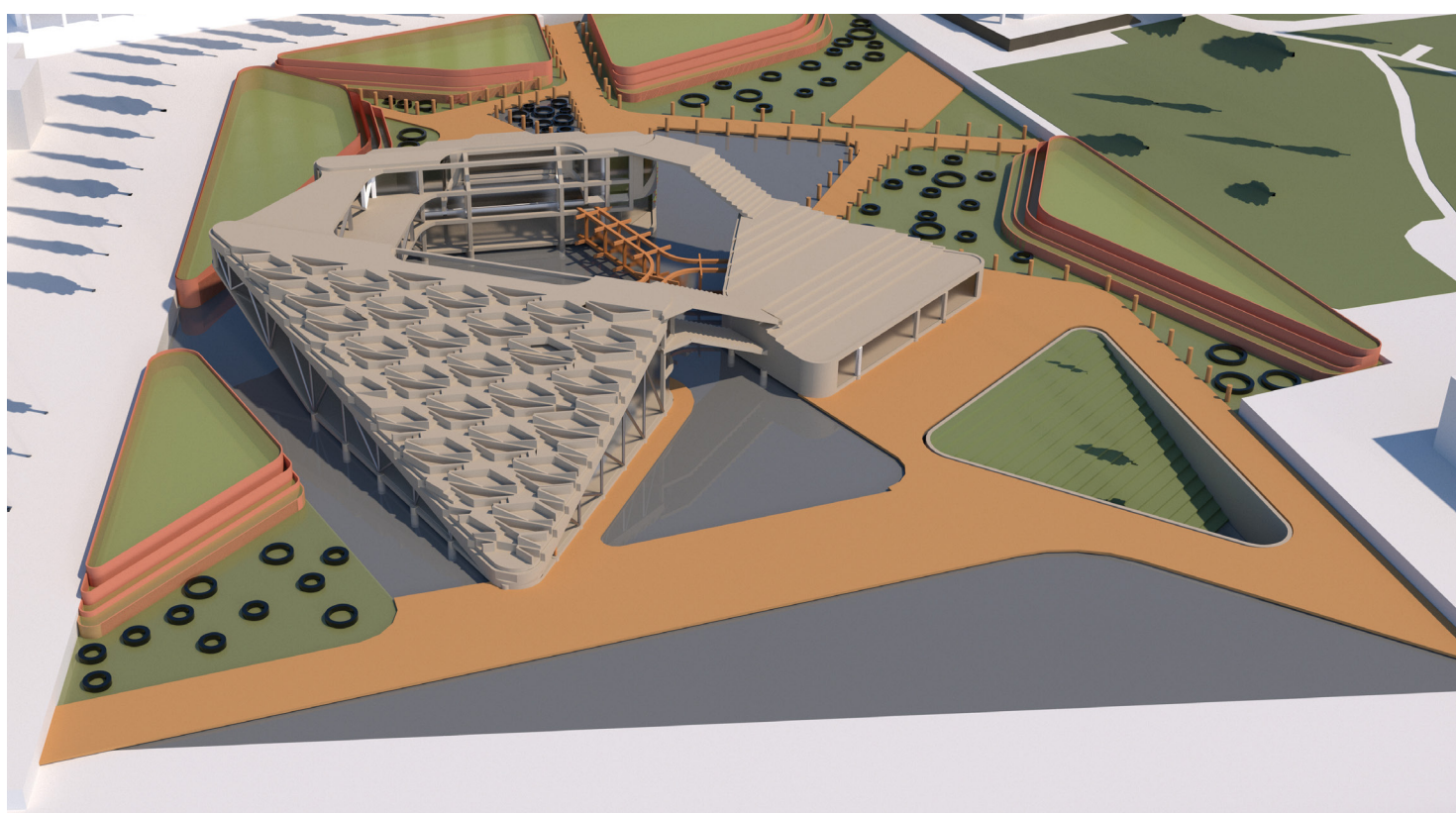


PROJECT GIBRALTAR

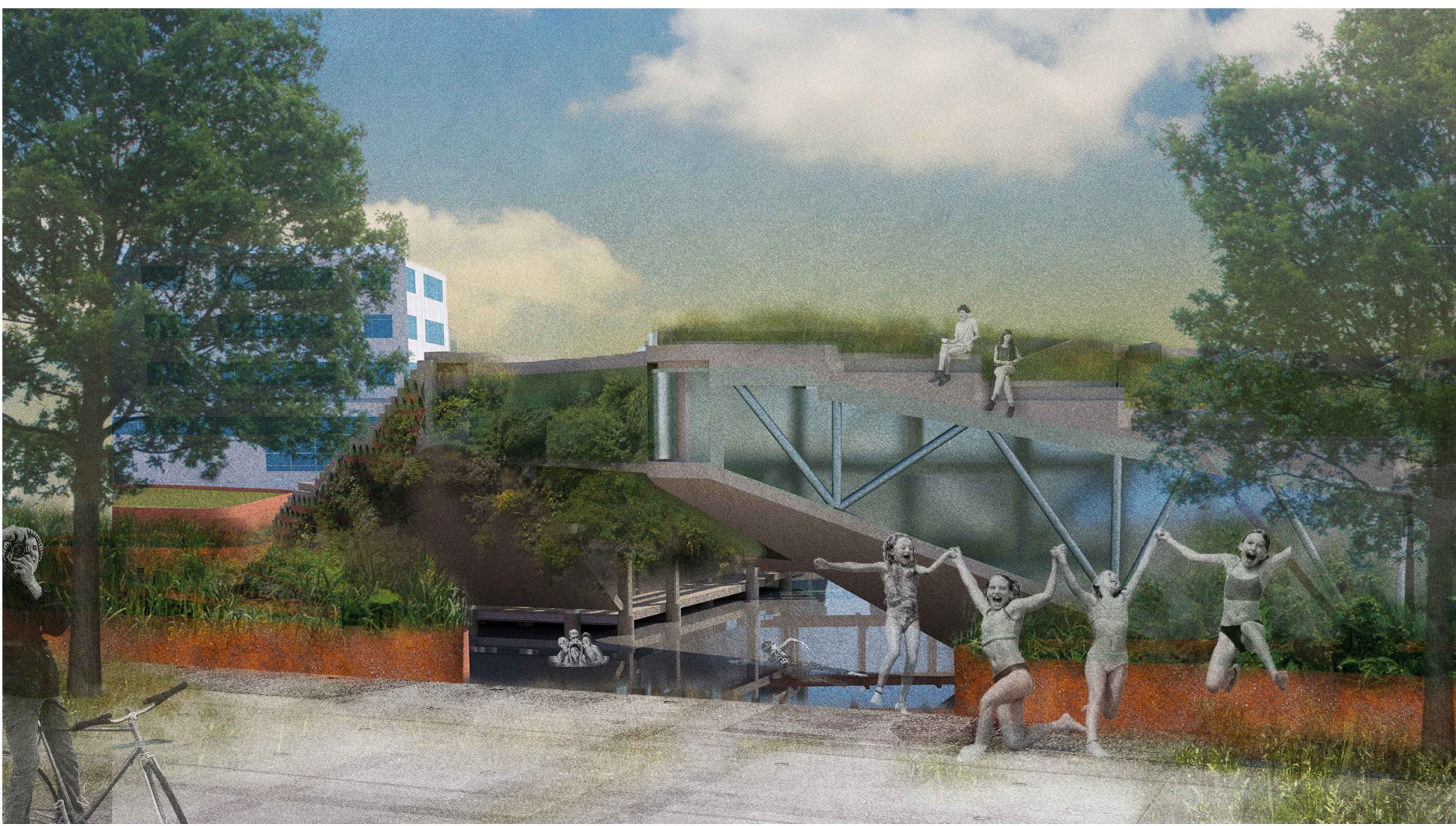
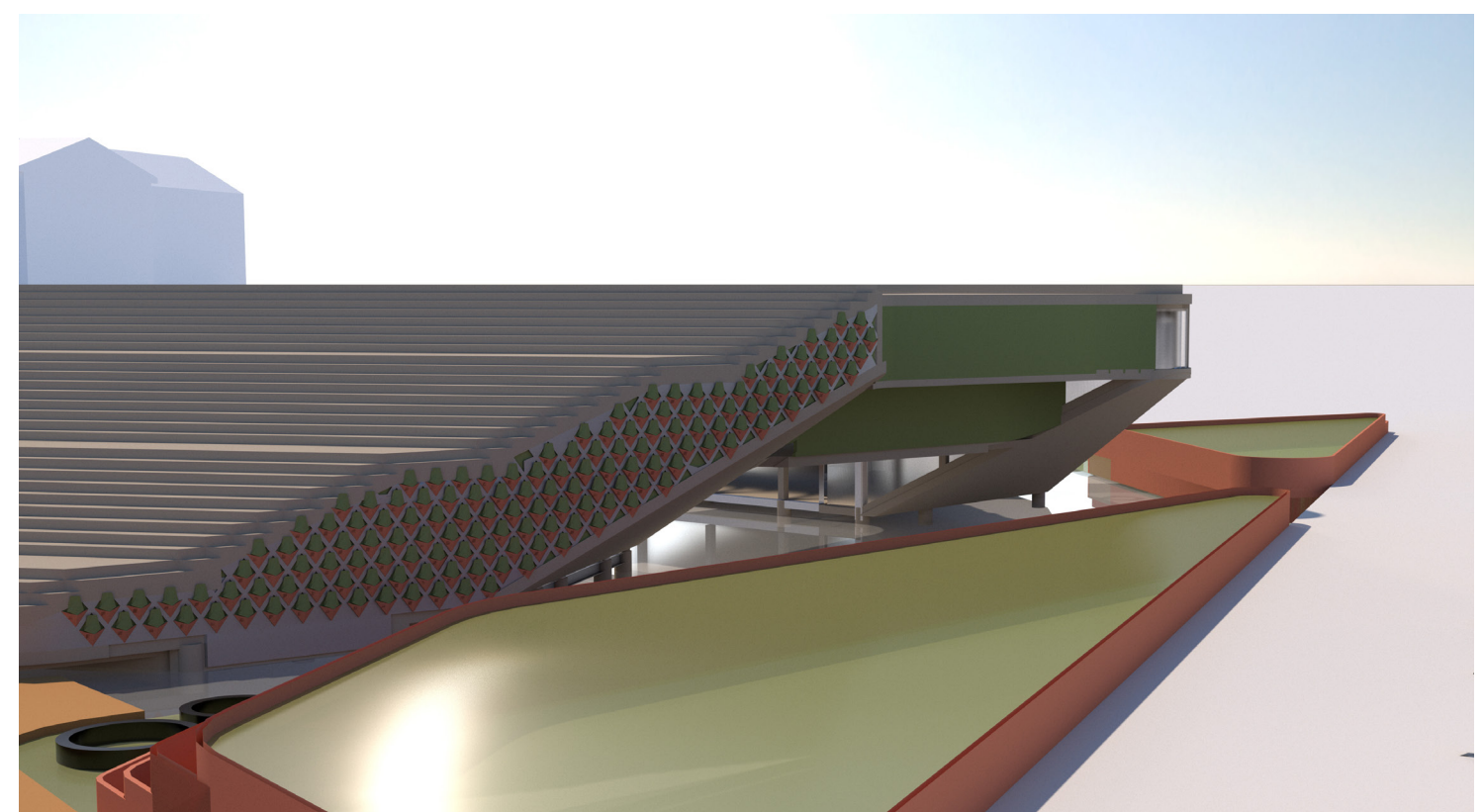
GROUND FLOOR 1:200



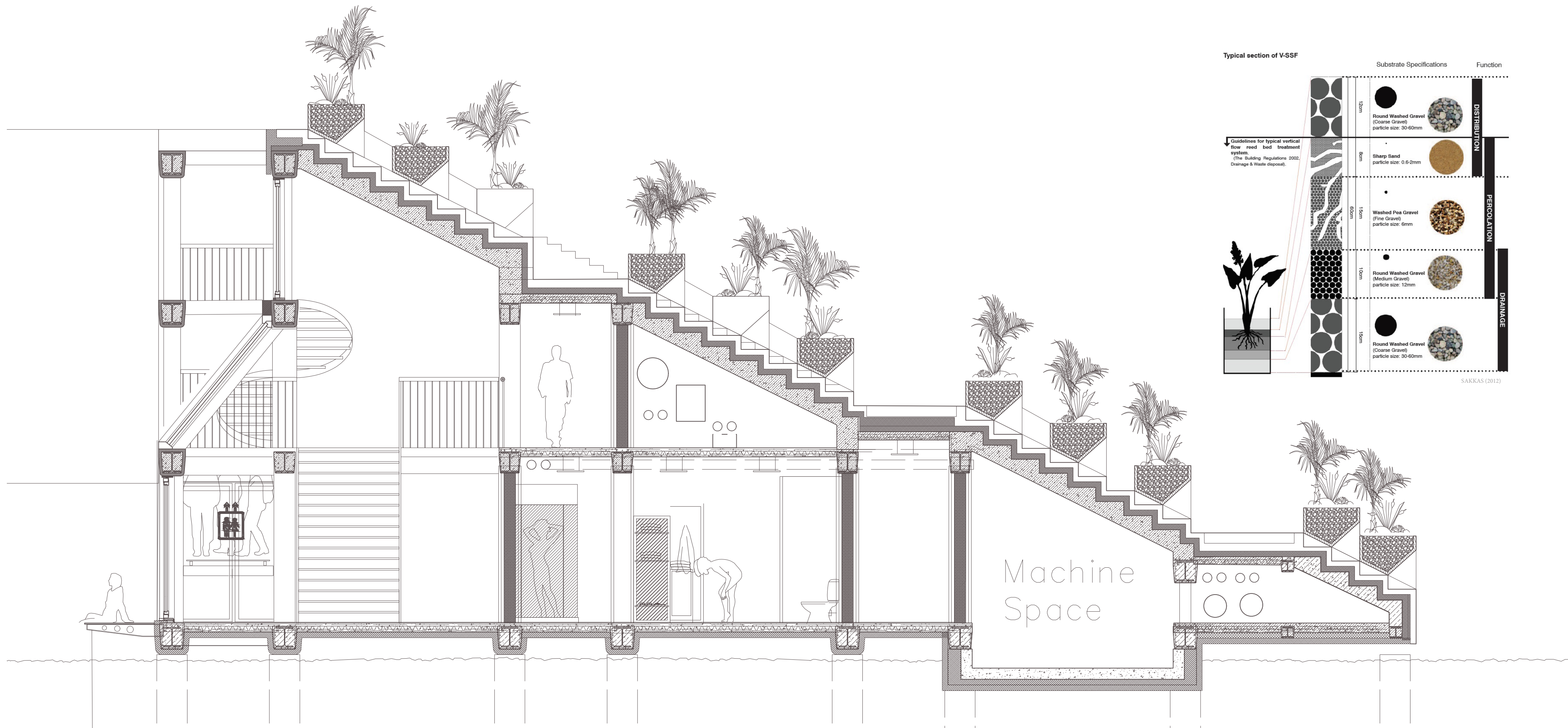
3D IMPRESSION



3D IMPRESSION



Section AA' 1:50



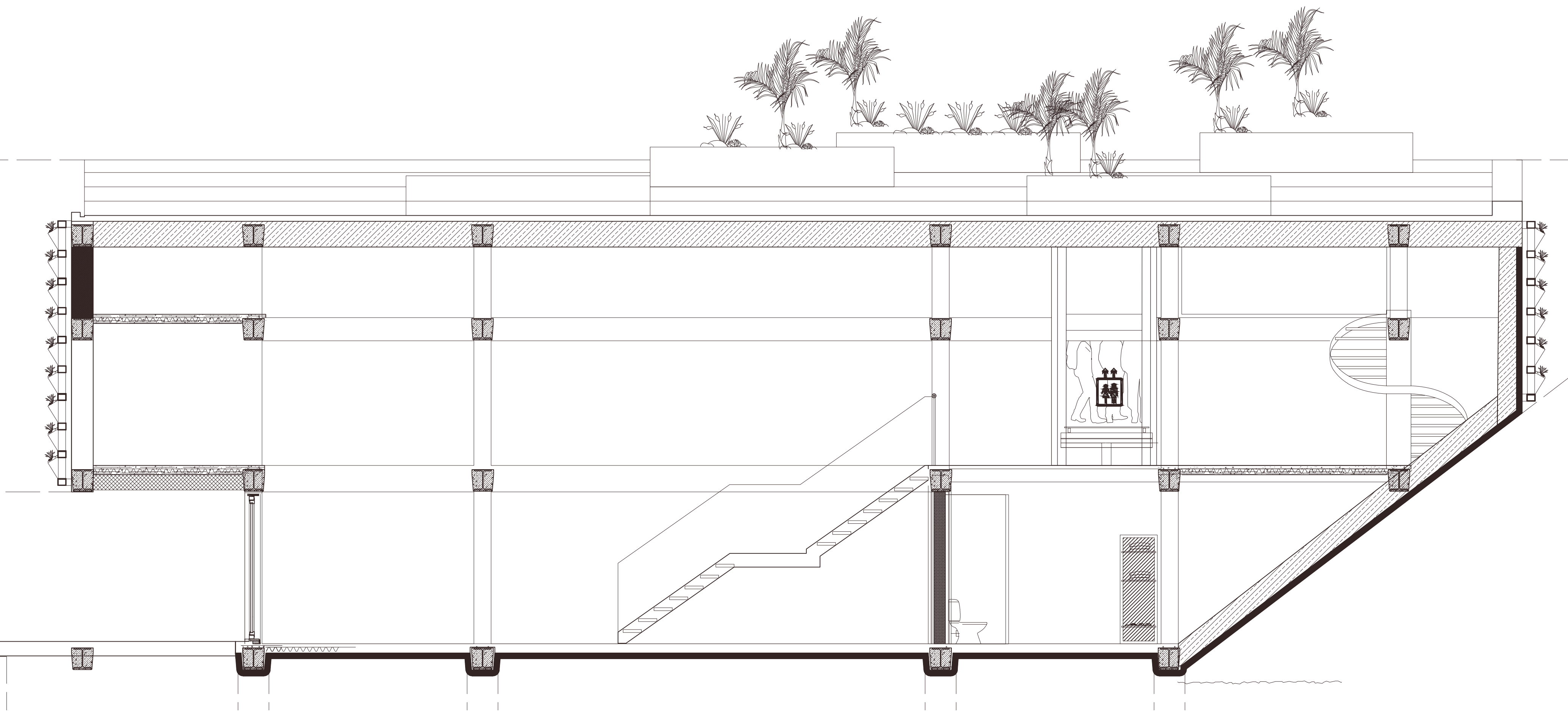
Typical section of V-SSP

Substrate Specifications	Function
<ul style="list-style-type: none"> Round Washed Gravel (Coarse Gravel) particle size: 30-60mm 	DISTRIBUTION
<ul style="list-style-type: none"> Silica Sand particle size: 0.62mm 	
<ul style="list-style-type: none"> Washed Fine Gravel (Fine Gravel) particle size: 6mm 	PERCOLATION
<ul style="list-style-type: none"> Round Washed Gravel (Medium Gravel) particle size: 12mm 	
<ul style="list-style-type: none"> Round Washed Gravel (Coarse Gravel) particle size: 30-60mm 	DRAINAGE

Guidelines for typical vertical flow bed treatment
The Building Regulations 2000
 Drainage & Waste disposal

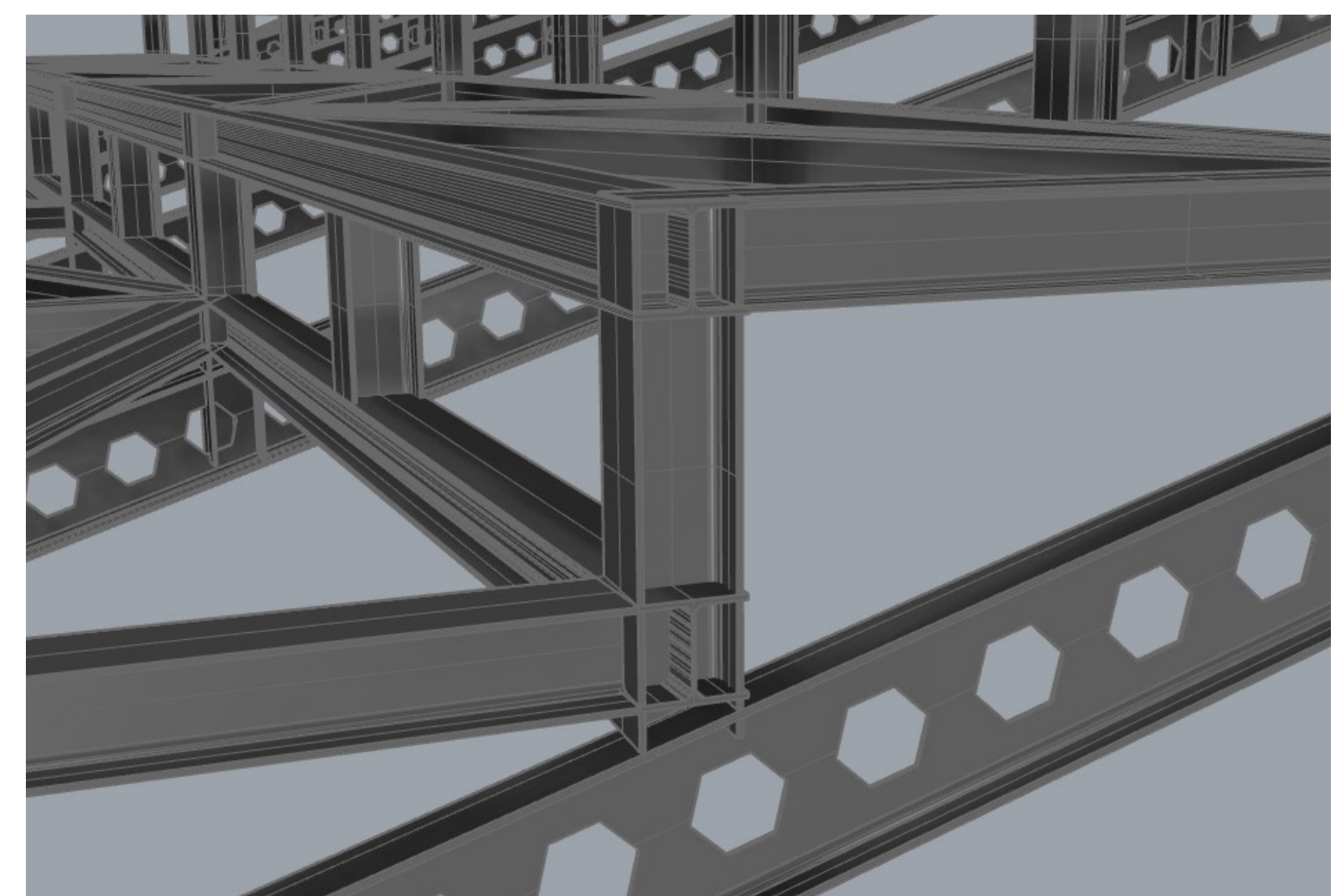
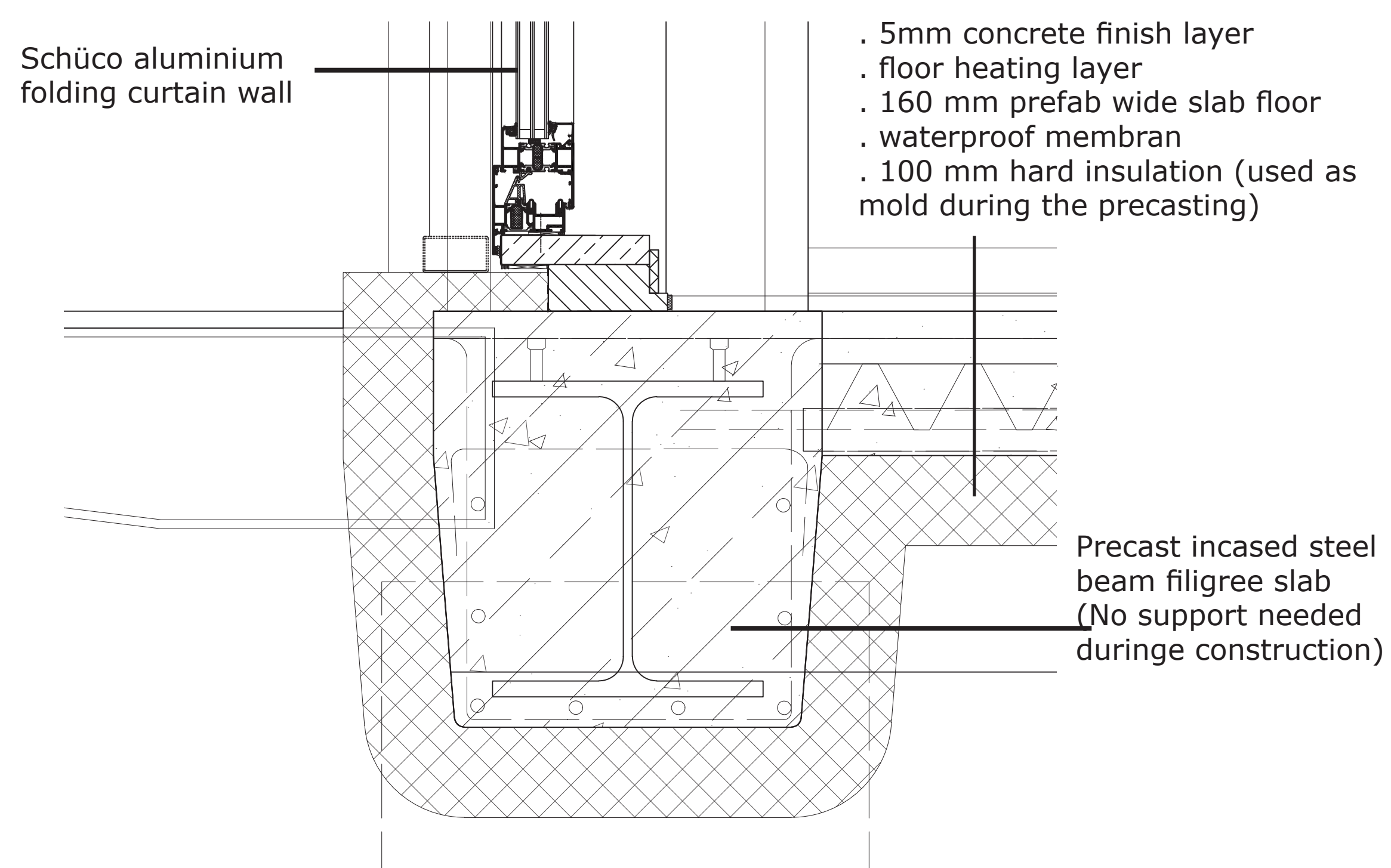
SARASU GIBLI

Section BB' 1:50

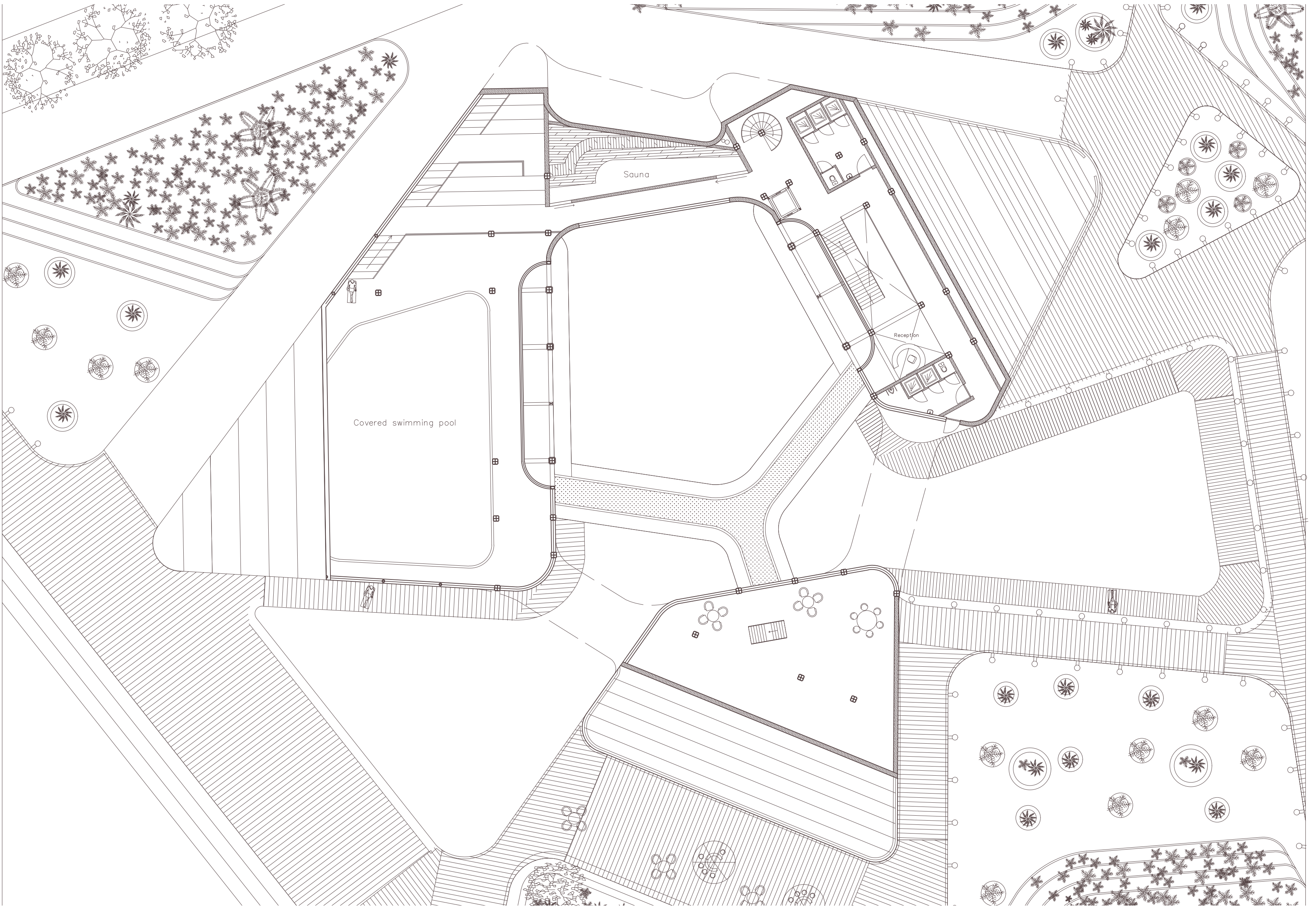


Detail 1:5

3D STRUCTURE DETAIL



FIRST FLOOR 1:200



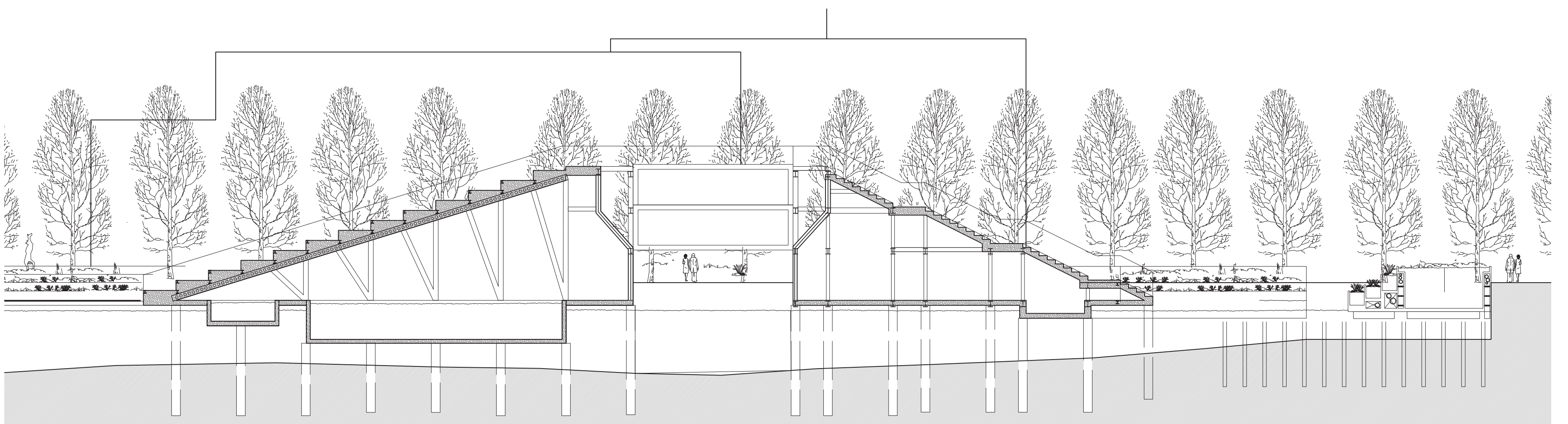
SECOND FLOOR 1:200



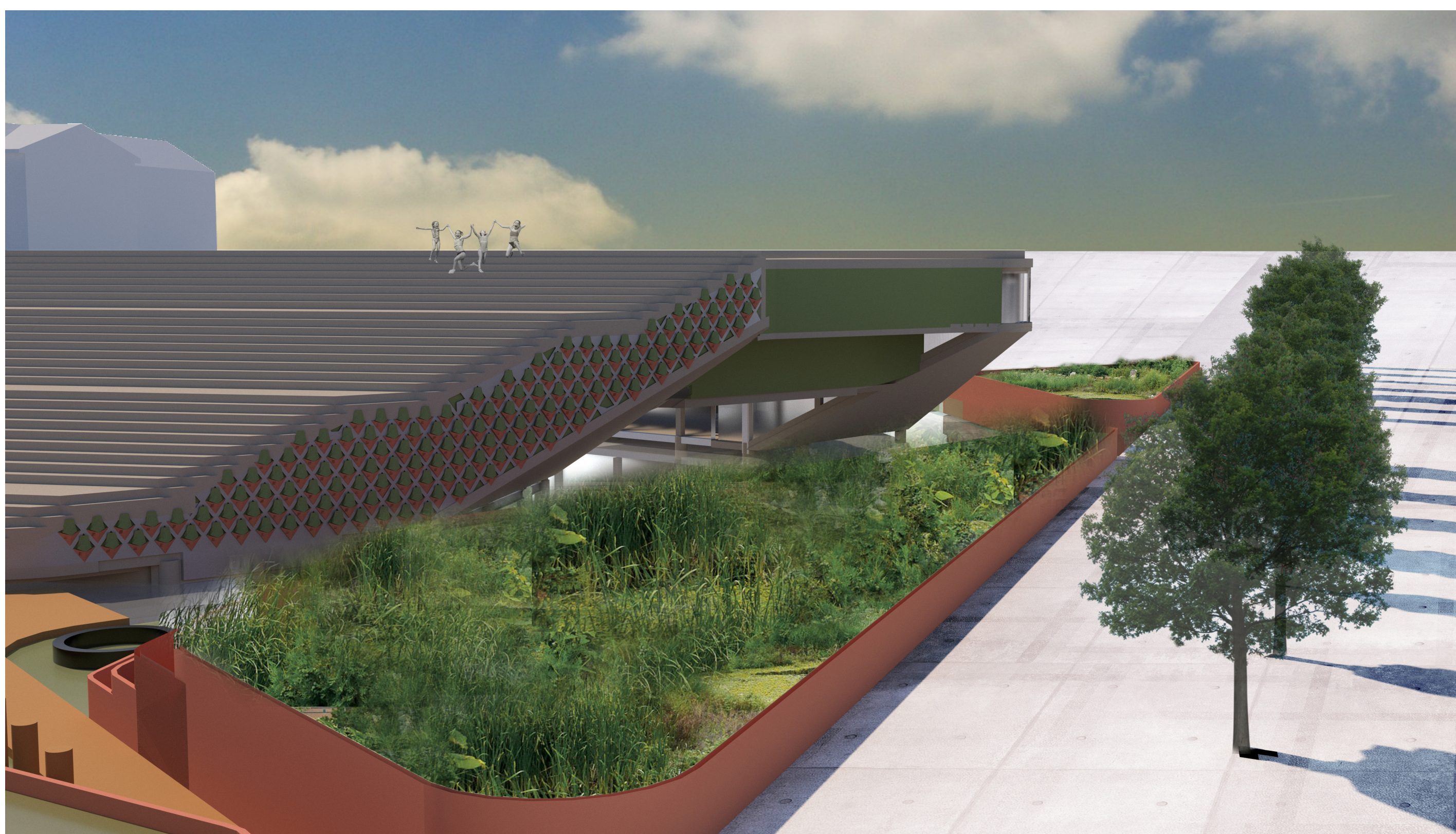
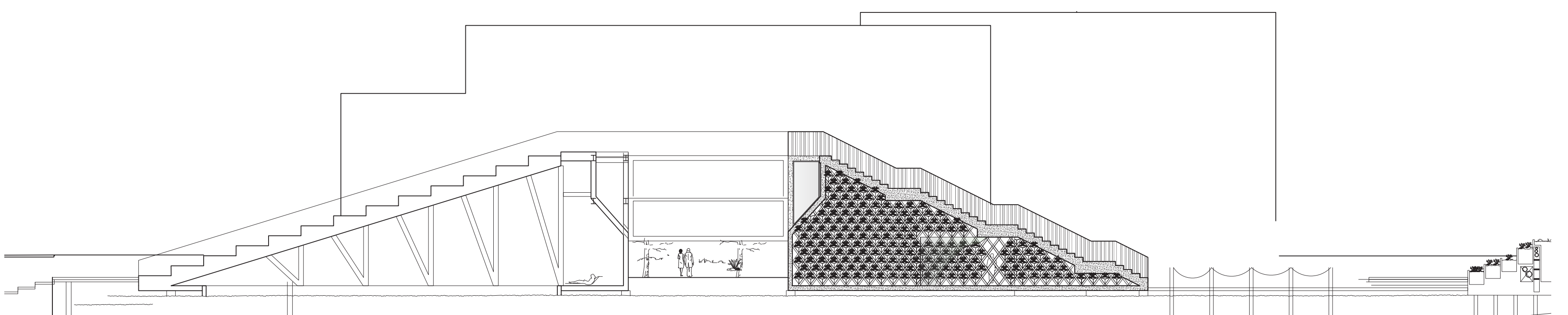
SITE PLAN 1:500



SECTION AA' 1:200



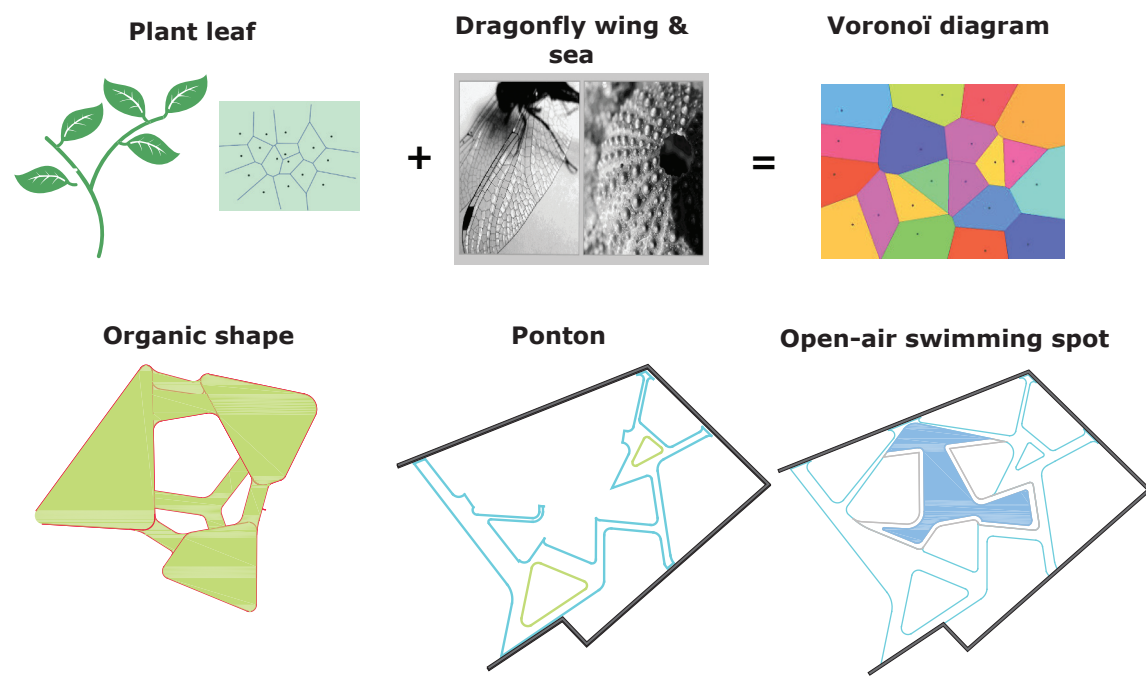
FACADE VIEW 1:200



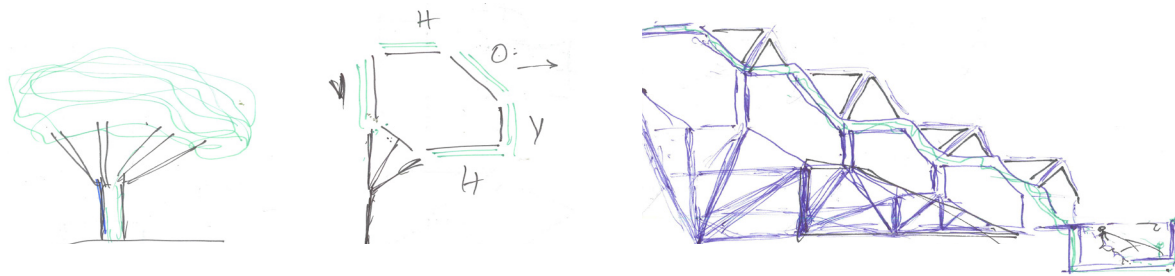
CONCEPTUAL APPROACH

DESIGN CONCEPT

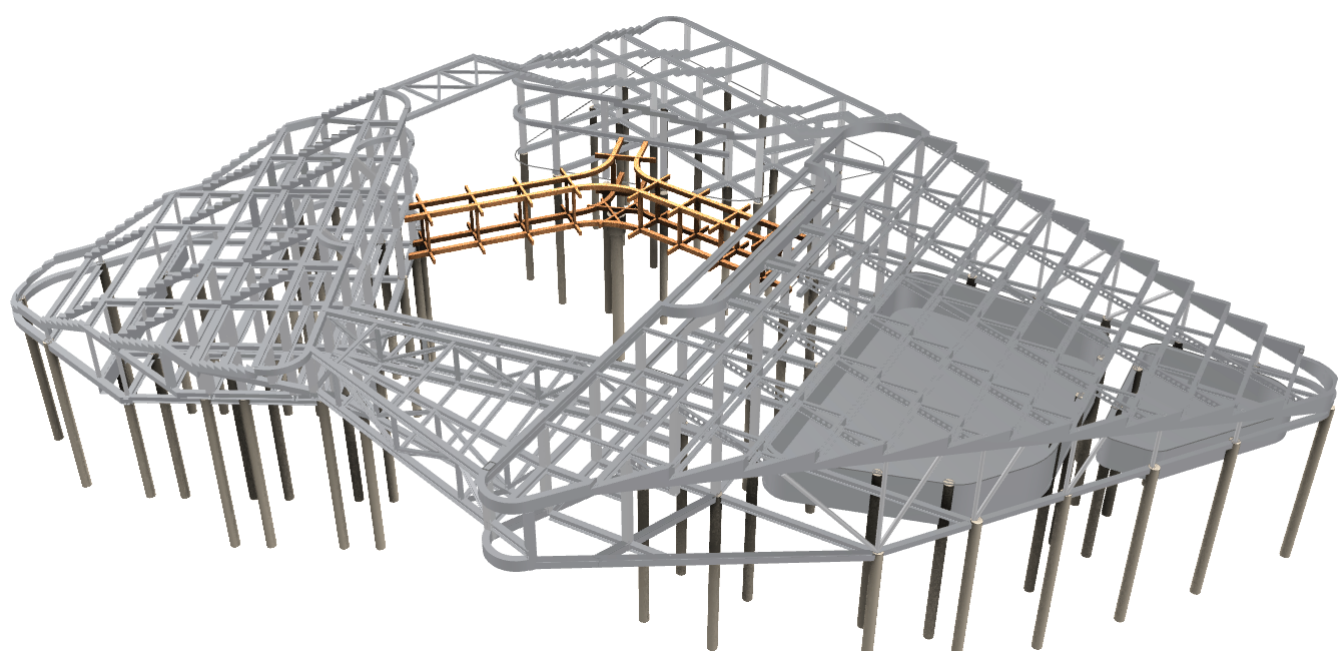
DESIGN CONCEPT



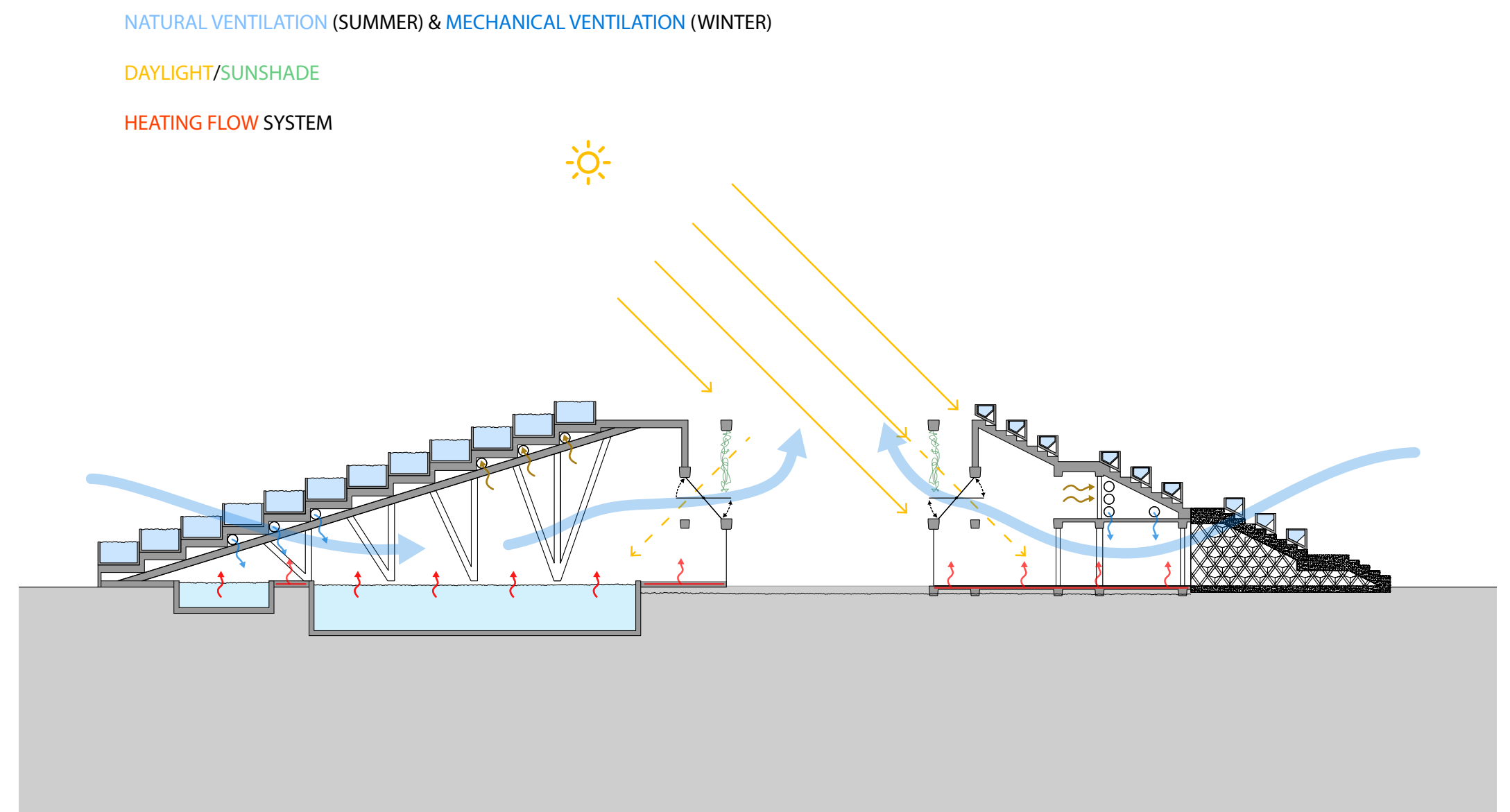
Biomimetic architecture is a contemporary philosophy of architecture that seeks solutions for sustainability in nature, not by replicating the natural forms, but by understanding the rules governing those forms.



STRUCTURAL CONCEPT



CLIMATE CONCEPT



PHYTO-FACADE CONCEPT

