

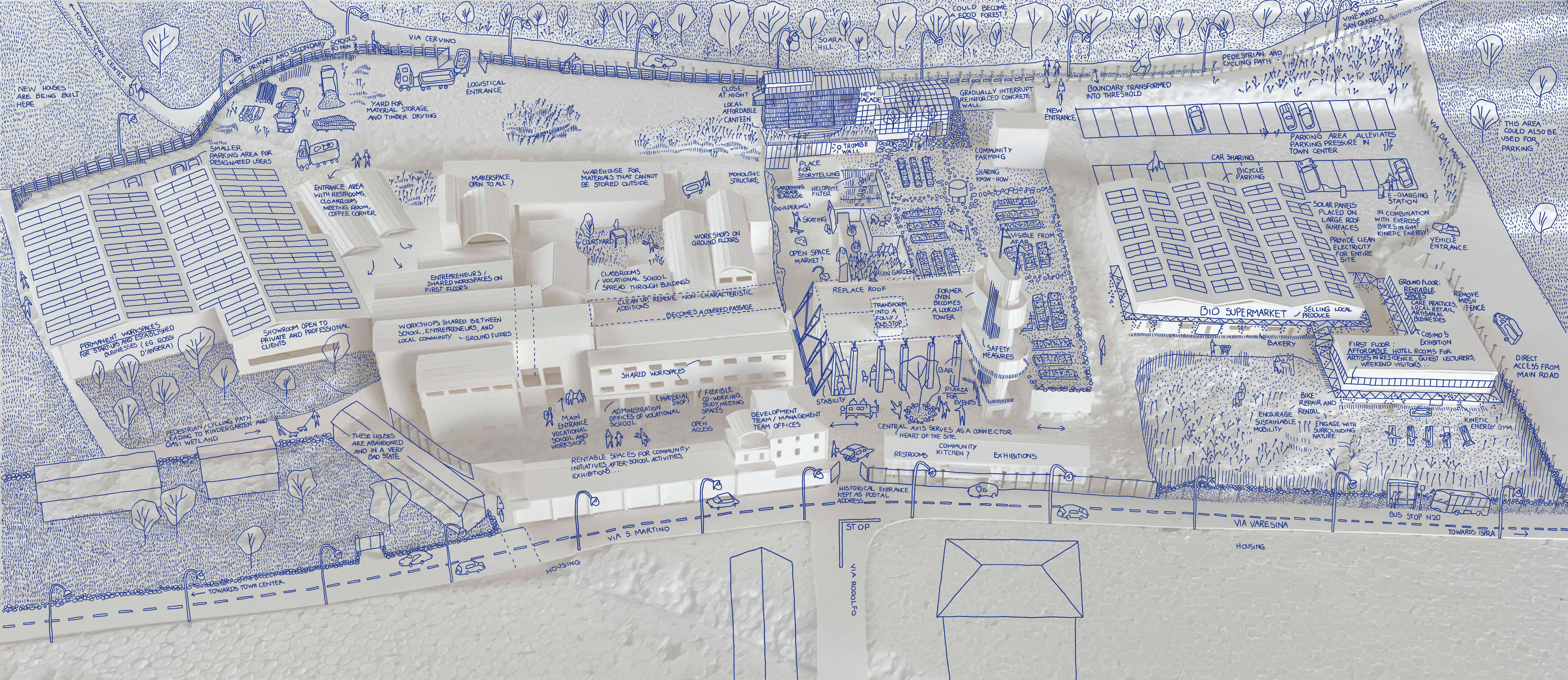
Drawing Set & Models

Delft University of Technology

1st mentor Susanne Pietsch
2nd mentor Rufus van den Ban
3rd mentor Lidy Meijers







NEW HOUSES ARE BEING BUILT HERE

SMALLER PARKING AREA FOR DESIGNATED USERS

ENTRANCE AREA WITH RESTROOMS, CLOAKROOM, MEETING ROOM, COFFEE CORNER

PERMANENT WORKSPACES FOR STARTUPS AND ESTABLISHED BUSINESSES (EG. ROSSI D'ANGERA)

SHOWROOM OPEN TO PRIVATE AND PROFESSIONAL CLIENTS

PEDESTRIAN / CYCLING PATH LEADING TO KINDERGARTEN AND OASI WETLAND

THESE HOUSES ARE ABANDONED AND IN A VERY BAD STATE

TOWARDS TOWN CENTER

ENTREPRENEURS / SHARED WORKSPACES ON FIRST FLOORS

WORKSHOPS SHARED BETWEEN SCHOOL, ENTREPRENEURS, AND LOCAL COMMUNITY - GROUND FLOORS

SHARED WORKSPACES

ADMINISTRATION OFFICES OF VOCATIONAL SCHOOL

RENTABLE SPACES FOR COMMUNITY INITIATIVES, AFTER-SCHOOL ACTIVITIES, EXHIBITIONS...

HOUSING

MAKERSPACE OPEN TO ALL?

WAREHOUSE FOR MATERIALS THAT CANNOT BE STORED OUTSIDE

COURTYARD

CLASSROOMS VOCATIONAL SCHOOL SPREAD THROUGH BUILDINGS

CLEAN UP - REMOVE NON-CHARACTERISTIC ADDITIONS

BECOMES A COVERED PASSAGE

WORKSHOPS ON GROUND FLOORS

MONOLITHIC STRUCTURE

LOCAL AFFORDABLE CANTINE

CLOSE AT NIGHT

LOGISTICAL ENTRANCE

VIA CERVINO

PRIMARY AND SECONDARY SCHOOLS TO MIN

YARD FOR MATERIAL STORAGE AND TIMBER DRYING

VIA DAL MOLIN

SOARA HILL

COULD BECOME A FOOD FOREST?

PEDESTRIAN AND CYCLING PATH

VINEYARDS SAN QUIRICO

TOWARDS TOWN CENTER

NEW FACADE

GRADUALLY INTERRUPT REINFORCED CONCRETE WALL

BOUNDARY TRANSFORMED INTO THRESHOLD

NEW ENTRANCE

PARKING AREA ALLEVIATES PARKING PRESSURE IN TOWN CENTER

CAR SHARING

BICYCLE PARKING

SOLAR PANELS PLACED ON LARGE ROOF SURFACES

PROVIDE CLEAN ELECTRICITY FOR ENTIRE SITE

VEHICLE ENTRANCE

E-CHARGING STATION

IN COMBINATION WITH EXERCISE BIKES IN GYM, KINETIC ENERGY!

GROUND FLOOR: RENTABLE SPACES

CARE PRACTICES, LOCAL RETAIL, ARTISANAL BUSINESSES

REMOVE MESH FENCE

COSIMO'S EXHIBITION

FIRST FLOOR: AFFORDABLE HOTEL ROOMS FOR ARTISTS IN RESIDENCE, GUEST LECTURERS, WEEKEND VISITORS...

DIRECT ACCESS FROM MAIN ROAD

ENCOURAGE SUSTAINABLE MOBILITY

ENGAGE WITH SURROUNDING NATURE

KINETIC ENERGY GYM

BIKE REPAIR AND RENTAL

PLACE FOR STORYTELLING

GARDENING STORAGE TEAHOUSE

BOULDERING!

SKATING

OPEN SPACE MARKET?

RUIN GARDENS

REPLACE ROOF

TRANSFORM INTO A FOLLY / BUS STOP

FORMER OVEN BECOMES A LOOKOUT TOWER

SAFETY MEASURES

STABILITY

DEVELOPMENT TEAM / MANAGEMENT TEAM OFFICES

RESTROOMS

COMMUNITY KITCHEN?

EXHIBITIONS

PIAZZA FOR EVENTS

BAR

BAR

COMMUNITY FARMING

SHARING KNOW-HOW

VISIBLE FROM AFAR

HEART OF THE SITE

CENTRAL AXIS SERVES AS A CONNECTOR

RESTROOMS

COMMUNITY KITCHEN?

EXHIBITIONS

PIAZZA FOR EVENTS

BAR

BAR

RESTROOMS

COMMUNITY KITCHEN?

EXHIBITIONS

PIAZZA FOR EVENTS

BAR

BAR

RESTROOMS

COMMUNITY FARMING

SHARING KNOW-HOW

VISIBLE FROM AFAR

HEART OF THE SITE

CENTRAL AXIS SERVES AS A CONNECTOR

RESTROOMS

COMMUNITY KITCHEN?

EXHIBITIONS

PIAZZA FOR EVENTS

BAR

BAR

RESTROOMS

COMMUNITY KITCHEN?

EXHIBITIONS

PIAZZA FOR EVENTS

BAR

BAR

RESTROOMS

COMMUNITY FARMING

SHARING KNOW-HOW

VISIBLE FROM AFAR

HEART OF THE SITE

CENTRAL AXIS SERVES AS A CONNECTOR

RESTROOMS

COMMUNITY KITCHEN?

EXHIBITIONS

PIAZZA FOR EVENTS

BAR

BAR

RESTROOMS

COMMUNITY KITCHEN?

EXHIBITIONS

PIAZZA FOR EVENTS

BAR

BAR

RESTROOMS

COMMUNITY FARMING

SHARING KNOW-HOW

VISIBLE FROM AFAR

HEART OF THE SITE

CENTRAL AXIS SERVES AS A CONNECTOR

RESTROOMS

COMMUNITY KITCHEN?

EXHIBITIONS

PIAZZA FOR EVENTS

BAR

BAR

RESTROOMS

COMMUNITY KITCHEN?

EXHIBITIONS

PIAZZA FOR EVENTS

BAR

BAR

RESTROOMS

COMMUNITY FARMING

SHARING KNOW-HOW

VISIBLE FROM AFAR

HEART OF THE SITE

CENTRAL AXIS SERVES AS A CONNECTOR

RESTROOMS

COMMUNITY KITCHEN?

EXHIBITIONS

PIAZZA FOR EVENTS

BAR

BAR

RESTROOMS

COMMUNITY KITCHEN?

EXHIBITIONS

PIAZZA FOR EVENTS

BAR

BAR

RESTROOMS

COMMUNITY FARMING

SHARING KNOW-HOW

VISIBLE FROM AFAR

HEART OF THE SITE

CENTRAL AXIS SERVES AS A CONNECTOR

RESTROOMS

COMMUNITY KITCHEN?

EXHIBITIONS

PIAZZA FOR EVENTS

BAR

BAR

RESTROOMS

COMMUNITY KITCHEN?

EXHIBITIONS

PIAZZA FOR EVENTS

BAR

BAR

RESTROOMS

COMMUNITY FARMING

SHARING KNOW-HOW

VISIBLE FROM AFAR

HEART OF THE SITE

CENTRAL AXIS SERVES AS A CONNECTOR

RESTROOMS

COMMUNITY KITCHEN?

EXHIBITIONS

PIAZZA FOR EVENTS

BAR

BAR

RESTROOMS

COMMUNITY KITCHEN?

EXHIBITIONS

PIAZZA FOR EVENTS

BAR

BAR

RESTROOMS

COMMUNITY FARMING

SHARING KNOW-HOW

VISIBLE FROM AFAR

HEART OF THE SITE

CENTRAL AXIS SERVES AS A CONNECTOR

RESTROOMS

COMMUNITY KITCHEN?

EXHIBITIONS

PIAZZA FOR EVENTS

BAR

BAR

RESTROOMS

COMMUNITY KITCHEN?

EXHIBITIONS

PIAZZA FOR EVENTS

BAR

BAR

RESTROOMS

COMMUNITY FARMING

SHARING KNOW-HOW

VISIBLE FROM AFAR

HEART OF THE SITE

CENTRAL AXIS SERVES AS A CONNECTOR

RESTROOMS

COMMUNITY KITCHEN?

EXHIBITIONS

PIAZZA FOR EVENTS

BAR

BAR

RESTROOMS

COMMUNITY KITCHEN?

EXHIBITIONS

PIAZZA FOR EVENTS

BAR

BAR

RESTROOMS

COMMUNITY FARMING

SHARING KNOW-HOW

VISIBLE FROM AFAR

HEART OF THE SITE

CENTRAL AXIS SERVES AS A CONNECTOR

RESTROOMS

COMMUNITY KITCHEN?

EXHIBITIONS

PIAZZA FOR EVENTS

BAR

BAR

RESTROOMS

COMMUNITY KITCHEN?

EXHIBITIONS

PIAZZA FOR EVENTS

BAR

BAR

RESTROOMS

COMMUNITY FARMING

SHARING KNOW-HOW

VISIBLE FROM AFAR

HEART OF THE SITE

CENTRAL AXIS SERVES AS A CONNECTOR

RESTROOMS

COMMUNITY KITCHEN?

EXHIBITIONS

PIAZZA FOR EVENTS

BAR

BAR

RESTROOMS

COMMUNITY KITCHEN?

EXHIBITIONS

PIAZZA FOR EVENTS

BAR

BAR

RESTROOMS

COMMUNITY FARMING

SHARING KNOW-HOW

VISIBLE FROM AFAR

HEART OF THE SITE

CENTRAL AXIS SERVES AS A CONNECTOR

RESTROOMS

COMMUNITY KITCHEN?

EXHIBITIONS

PIAZZA FOR EVENTS

BAR

BAR

RESTROOMS

COMMUNITY KITCHEN?

EXHIBITIONS

PIAZZA FOR EVENTS

BAR

BAR

RESTROOMS

COMMUNITY FARMING

SHARING KNOW-HOW

VISIBLE FROM AFAR

HEART OF THE SITE

CENTRAL AXIS SERVES AS A CONNECTOR

RESTROOMS

COMMUNITY KITCHEN?

EXHIBITIONS

PIAZZA FOR EVENTS

BAR

BAR

RESTROOMS

COMMUNITY KITCHEN?

EXHIBITIONS

PIAZZA FOR EVENTS

BAR

BAR

RESTROOMS

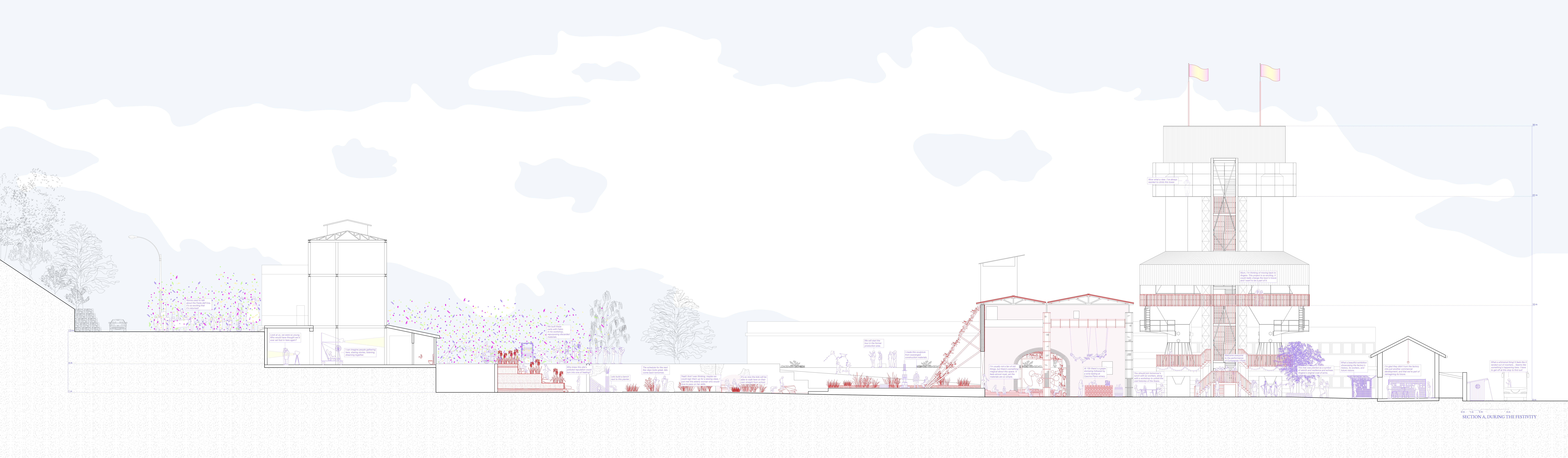
COMMUNITY FARMING

SHARING KNOW-HOW

VISIBLE FROM AFAR

HEART OF THE SITE

CENTRAL AXIS SERVES AS A



Thomas used to talk about the Fests' activities, it's so exciting that it's returned!

Look at us, we were so young! Who would have thought we'd ever set foot in here again?

I can imagine people gathering here, sharing stories, listening, drawing together.

It's such a nice party with Fabio in his workshop, reapplying discarded materials.

Who knew this site's industrial reputation could turn into one of healing?

Let's build a forest next to this planter.

The schedule for the next few days looks great, we come back tomorrow.

Yeah! And I was thinking, maybe we could sign them up for a sewing class just next time when we come back over to pass on her skills.

It's so nice the kids will be able to walk here on their own.

We will start the tour in the former production area.

I made this sculpture from discarded construction materials.

I'm usually not a fan of old things, but there's something magical about the space. It has a history, and the materials are so unique.

All this there is a great example of reuse, it's a nice thing to see. I'll be sure to bring some of these things home.

You should join tomorrow's tour with us, along with a workshop to unfold the great history of the Square.

Welcome everyone to the performance!

This site was planned as a symbol of wealth and modernity and reflects Algeria's original goal of arms.

What a beautiful exhibition showcasing the factory's history, its workers, and future visions.

I'm glad they don't turn the factory into just another commercial development, and that we're part of reimagining its future.

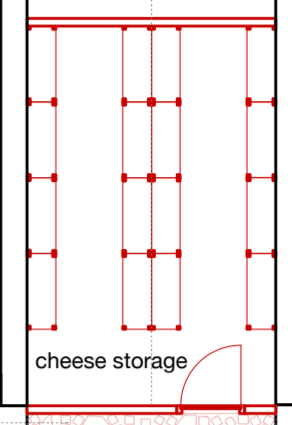
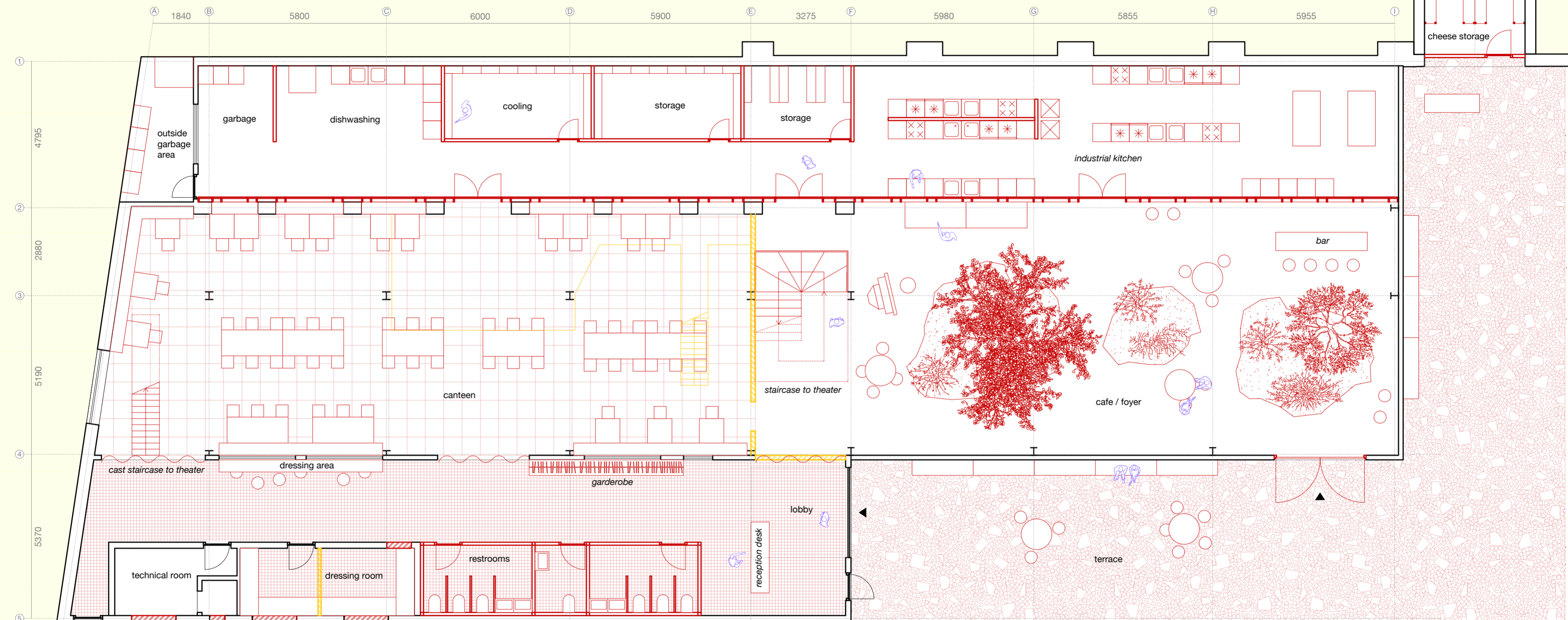
What a whimsical thing! It feels like a window out of nowhere. Seems like something's happening here. I have to get off at this stop to check out.

Wow, what a view. The photos wanted to climb this tower.

Man, I'm thinking of moving back to Algeria. This project is so exciting, it could really change the scene here and I want to be a part of it.

0m 1m 2m 5m

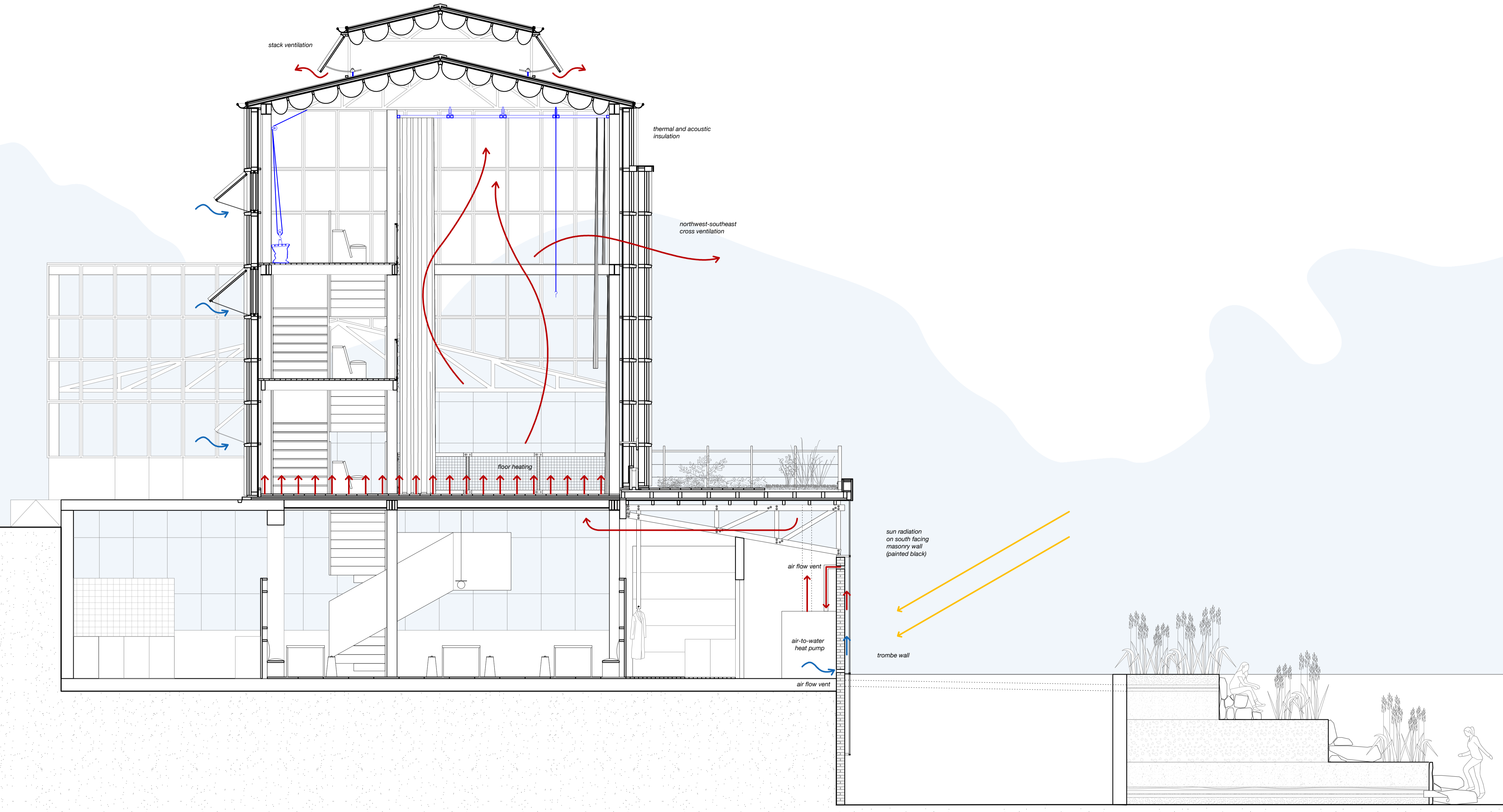
SECTION A, DURING THE FESTIVITY



0m 1m 2m 5m
FLOOR PLAN
GROUND FLOOR
 1:100



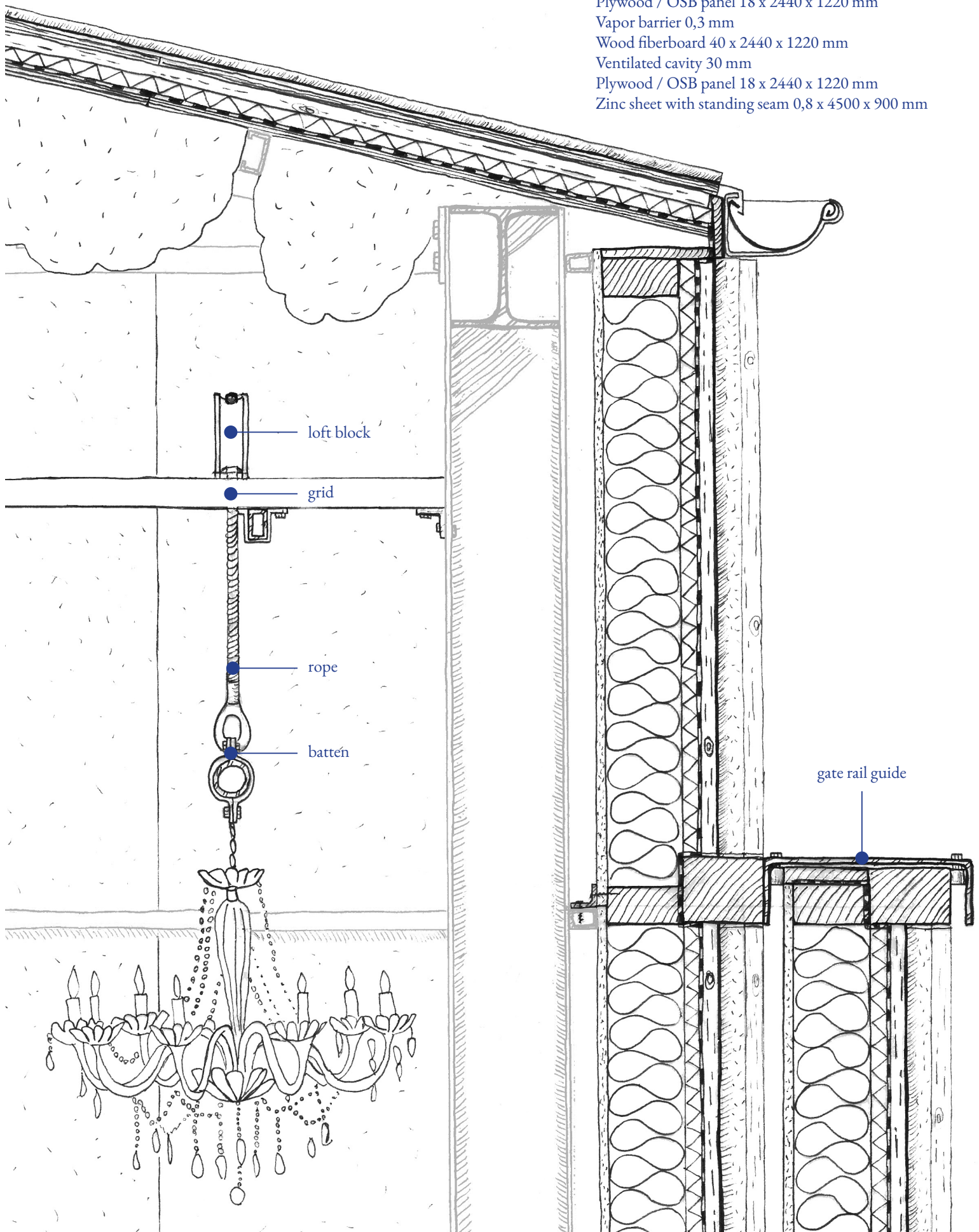
0m 1m 2m 5m
ELEVATION
SOUTH-EAST
1:100

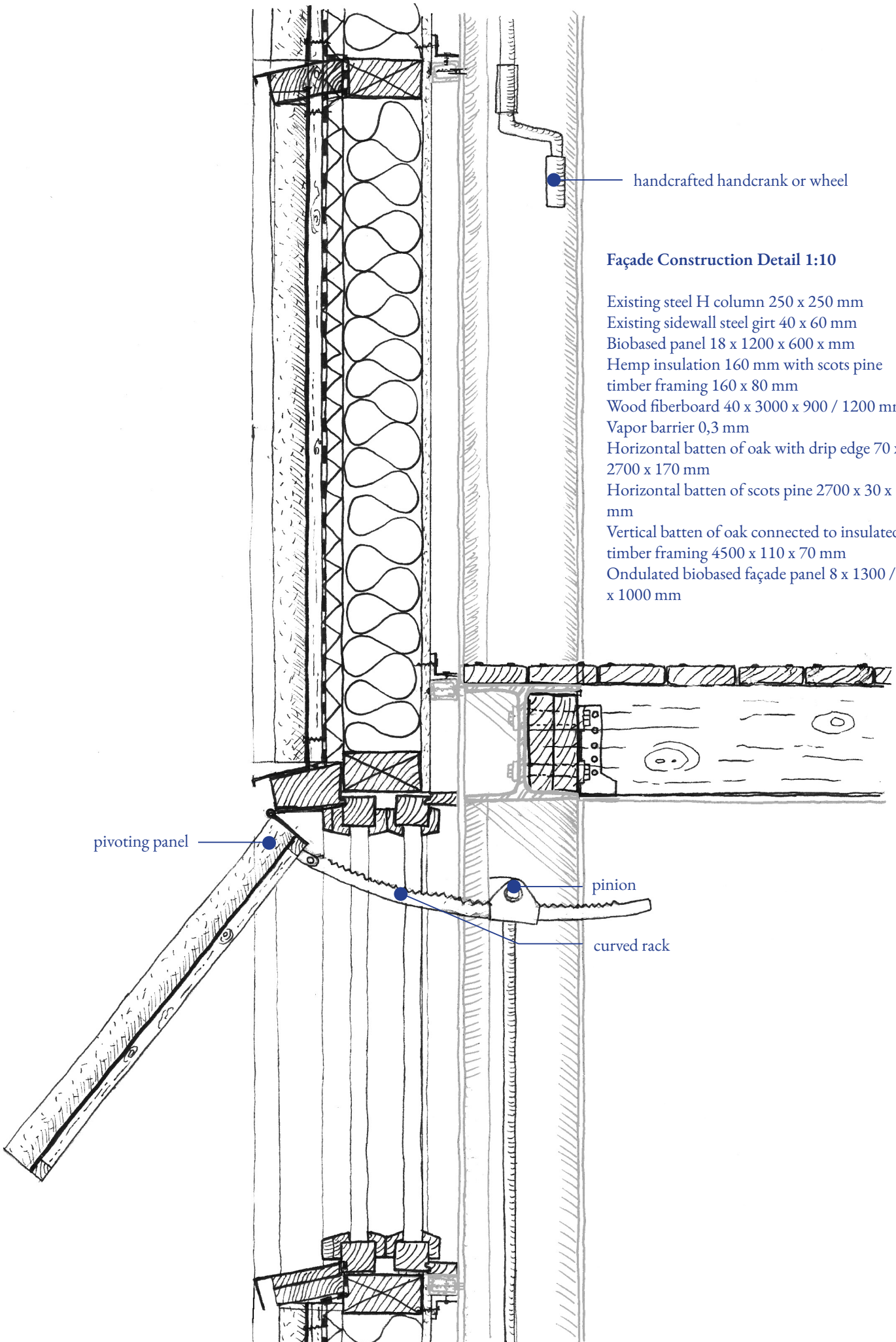


0m 1m 2m 5m
 SECTION A, CLIMATE STRATEGY
 1:50

Roof Construction Detail 1:10

Existing steel truss
Existing steel purlins 90 x 40 mm
Sheeps wool stuffed into red fishing nets for thermal and acoustic performance
Plywood / OSB panel 18 x 2440 x 1220 mm
Vapor barrier 0,3 mm
Wood fiberboard 40 x 2440 x 1220 mm
Ventilated cavity 30 mm
Plywood / OSB panel 18 x 2440 x 1220 mm
Zinc sheet with standing seam 0,8 x 4500 x 900 mm





handcrafted handcrank or wheel

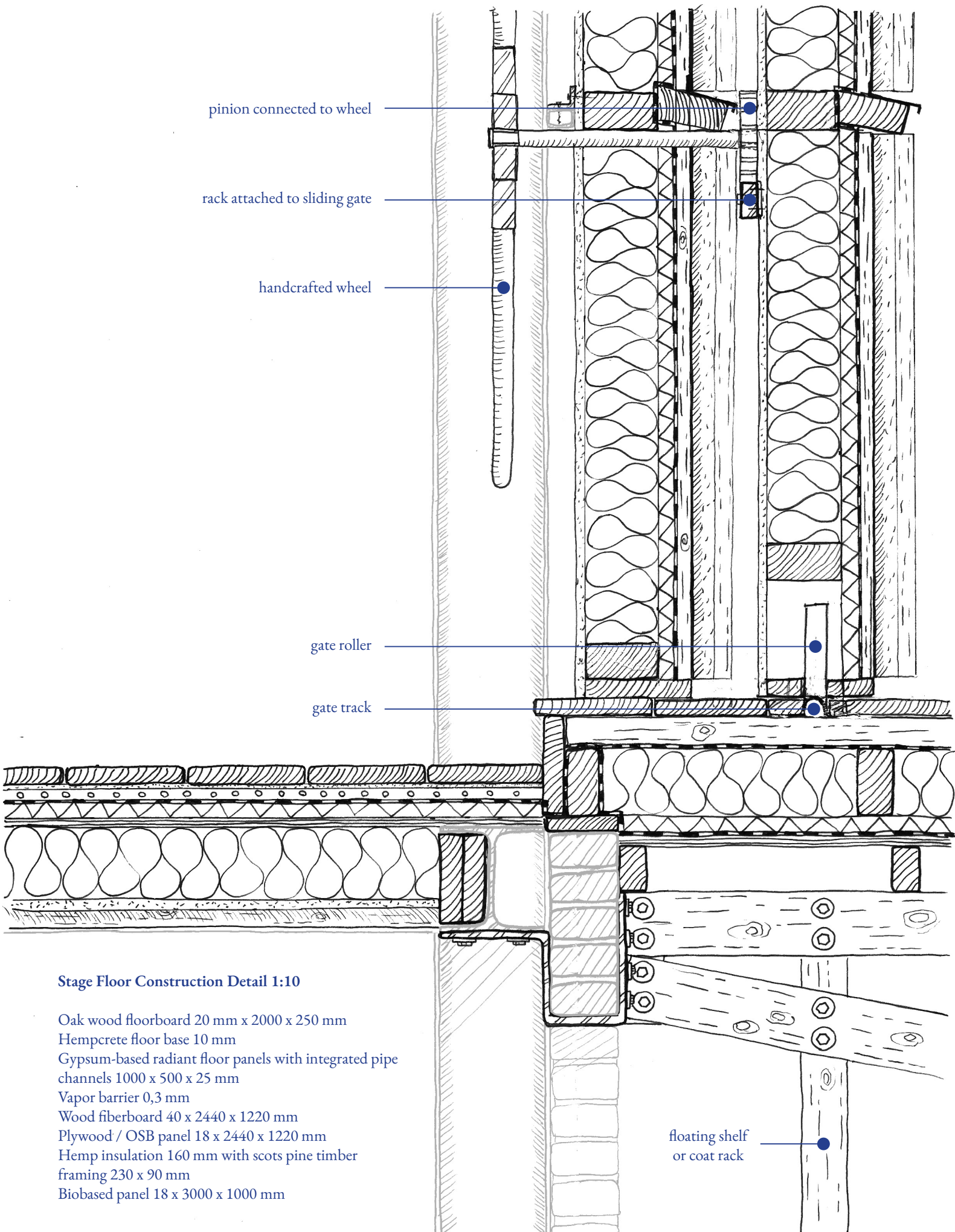
Façade Construction Detail 1:10

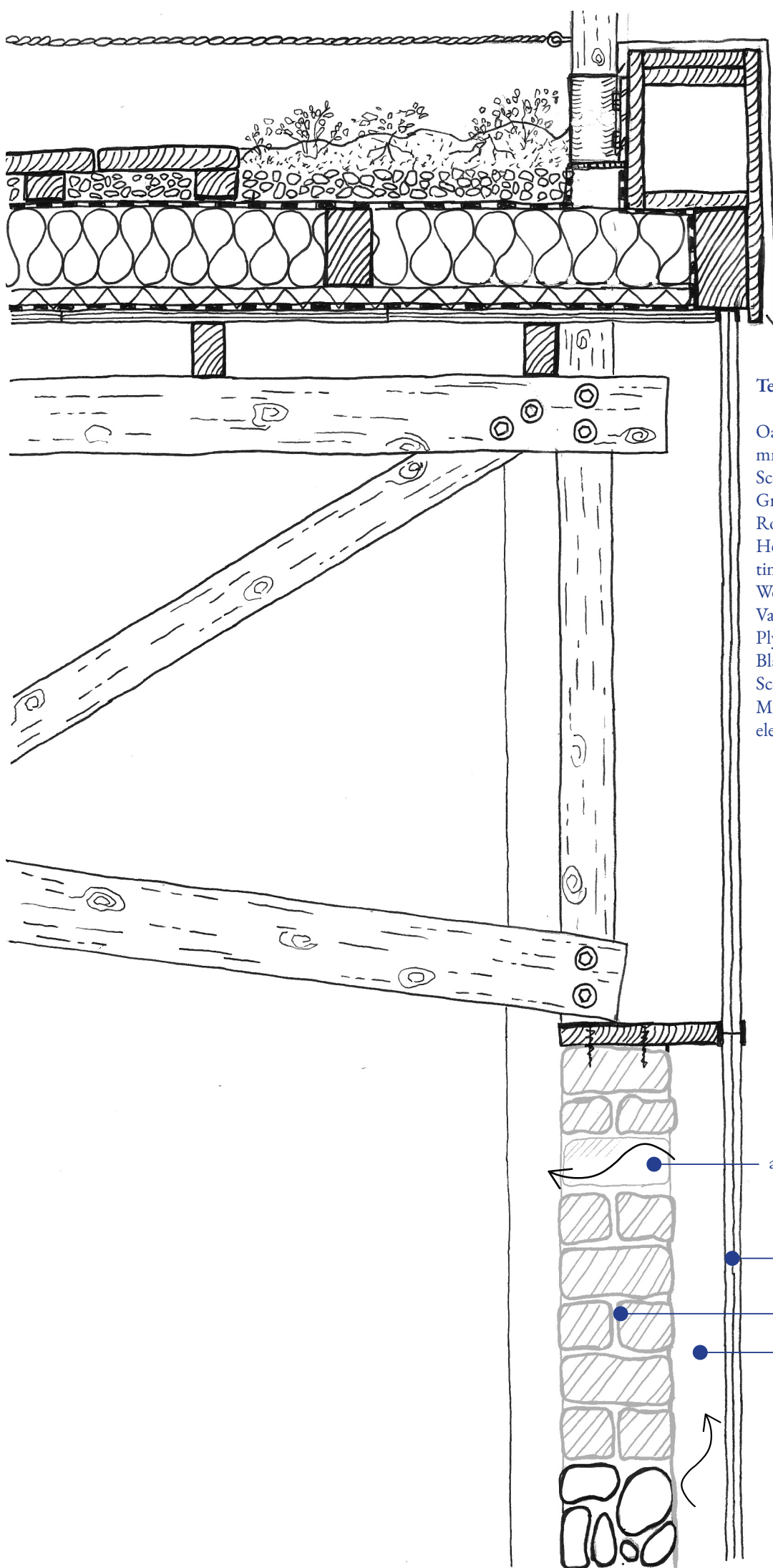
- Existing steel H column 250 x 250 mm
- Existing sidewall steel girt 40 x 60 mm
- Biobased panel 18 x 1200 x 600 x mm
- Hemp insulation 160 mm with scots pine
- timber framing 160 x 80 mm
- Wood fiberboard 40 x 3000 x 900 / 1200 mm
- Vapor barrier 0,3 mm
- Horizontal batten of oak with drip edge 70 x 2700 x 170 mm
- Horizontal batten of scots pine 2700 x 30 x 50 mm
- Vertical batten of oak connected to insulated timber framing 4500 x 110 x 70 mm
- Ondulated biobased façade panel 8 x 1300 / 900 x 1000 mm

pivoting panel

pinion

curved rack





Terrace Construction Detail 1:10

- Oak wood floorboard 20 mm x 2000 x 250 mm
- Scots pine timber joists 80 x 50 mm
- Gravel 50 mm
- Root barrier 0,3 mm
- Hemp insulation 160 mm with scots pine timber framing 160 x 80 mm
- Wood fiberboard 40 x 2440 x 1220 mm
- Vapor barrier 0,3 mm
- Plywood / OSB panel 18 x 2440 x 1220 mm
- Black paint
- Scots pine timber purlins 80 x 60 mm
- Mono truss consisting of 140 x 40 mm oak elements connected with metal bolts

- air flow vent
- glazing of reclaimed glass panels in metal framing
- black painted masonry wall 200 mm
- trombe wall air gap 9 mm

