

Metavalley

Bridging theory and planning to circumvent the decaying social-ecological system of the MAVM

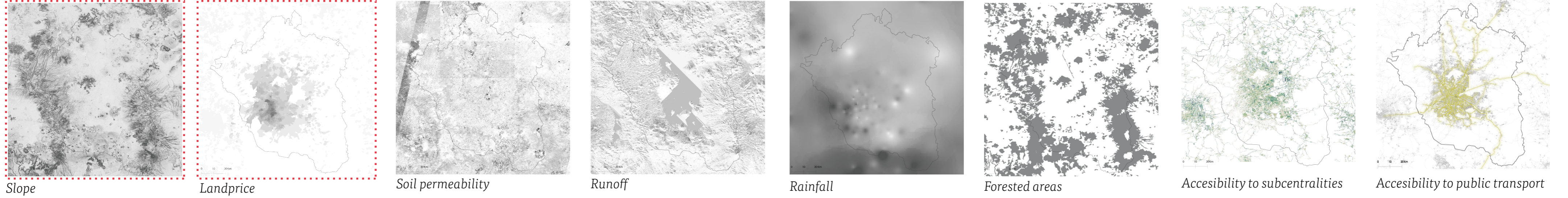
Problem statement

Regenerative Development and Design is an emerging field evolving from the concept of sustainability. While practices on sustainability focus on minimizing the damage to the natural and built environment, regenerative approaches focus not only on slowing, but reverting the degeneration of the environment by designing human systems that can co-evolve with the natural systems. However, in practice, there is a lack of integration between approaches like Regenerative Development and Design and spatial planning. This research, therefore, uses the case study of the Metropolitan Area of the Valley of Mexico (MAVM) to test how can regenerative approaches be integrated in the planning practice in the MAVM.

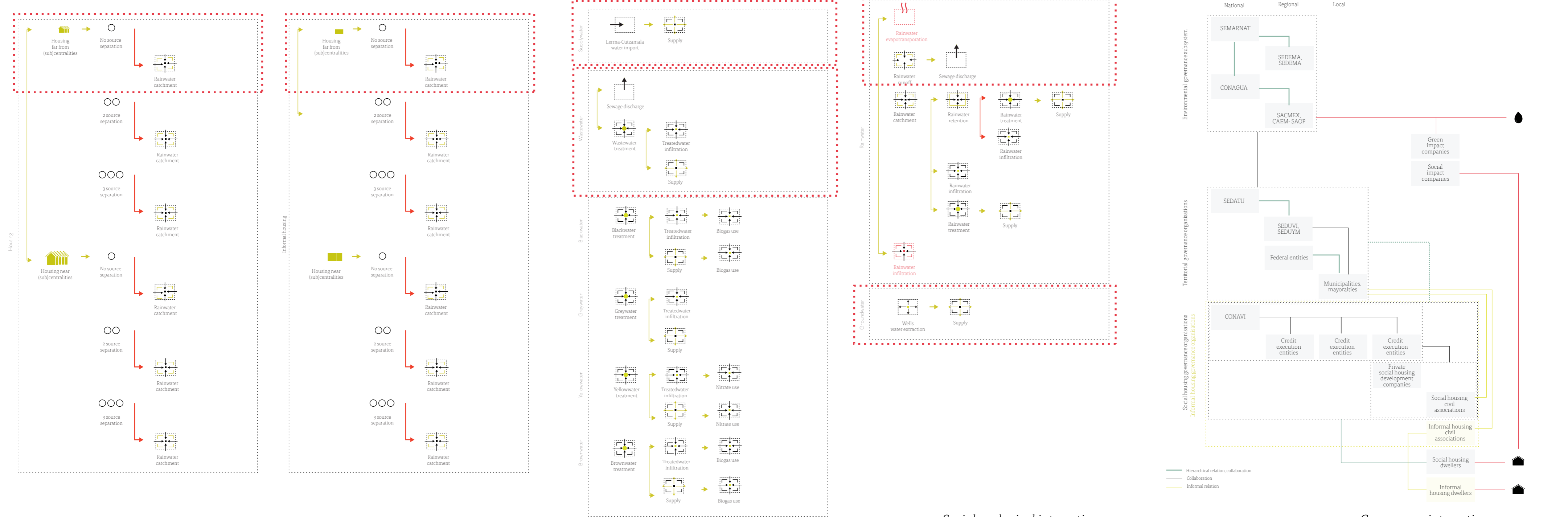
Research question

How can geodesign integrate regenerative development in the planning practice in the the MAVM in order to circumvent the current decaying social-ecological system?

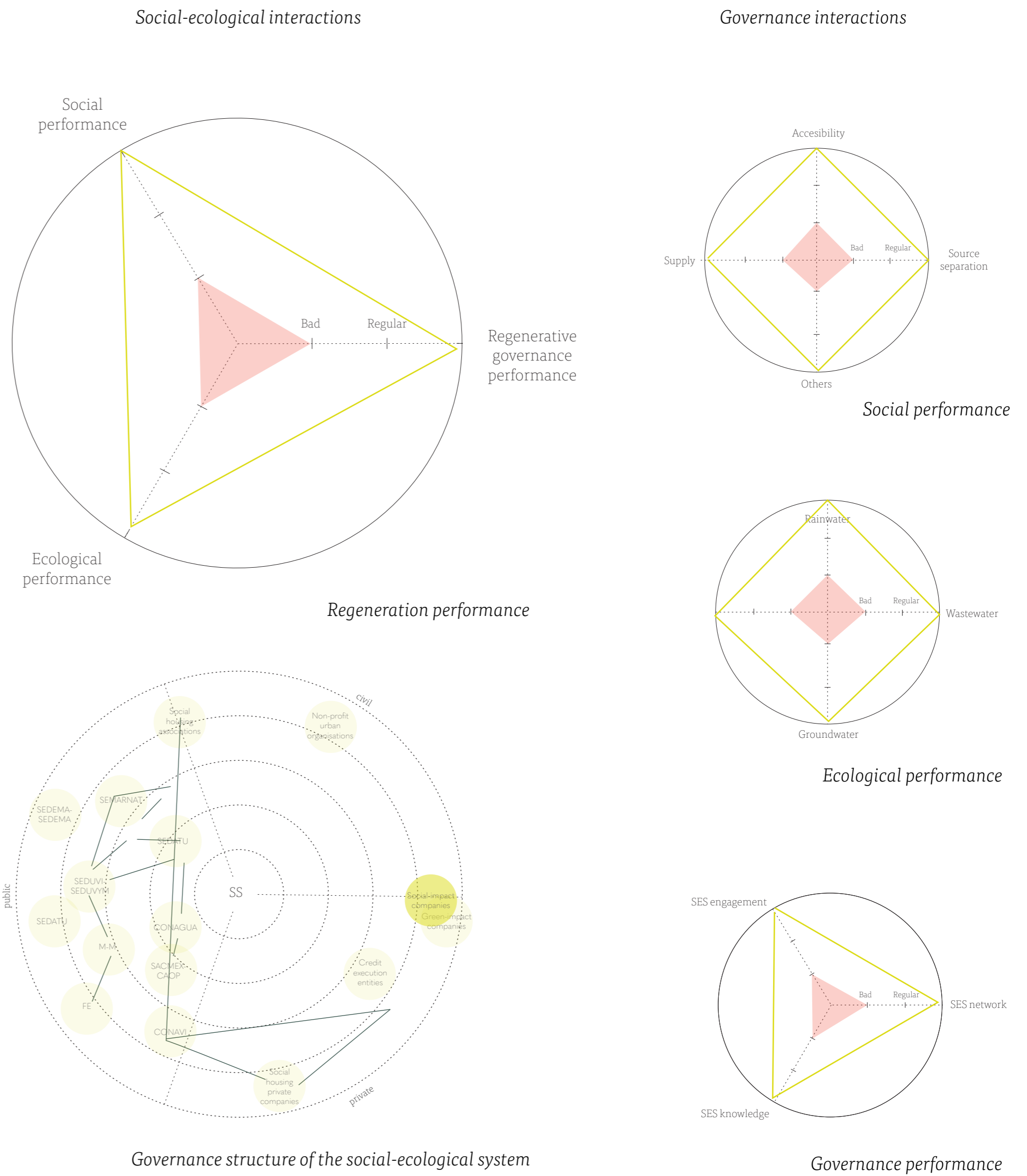
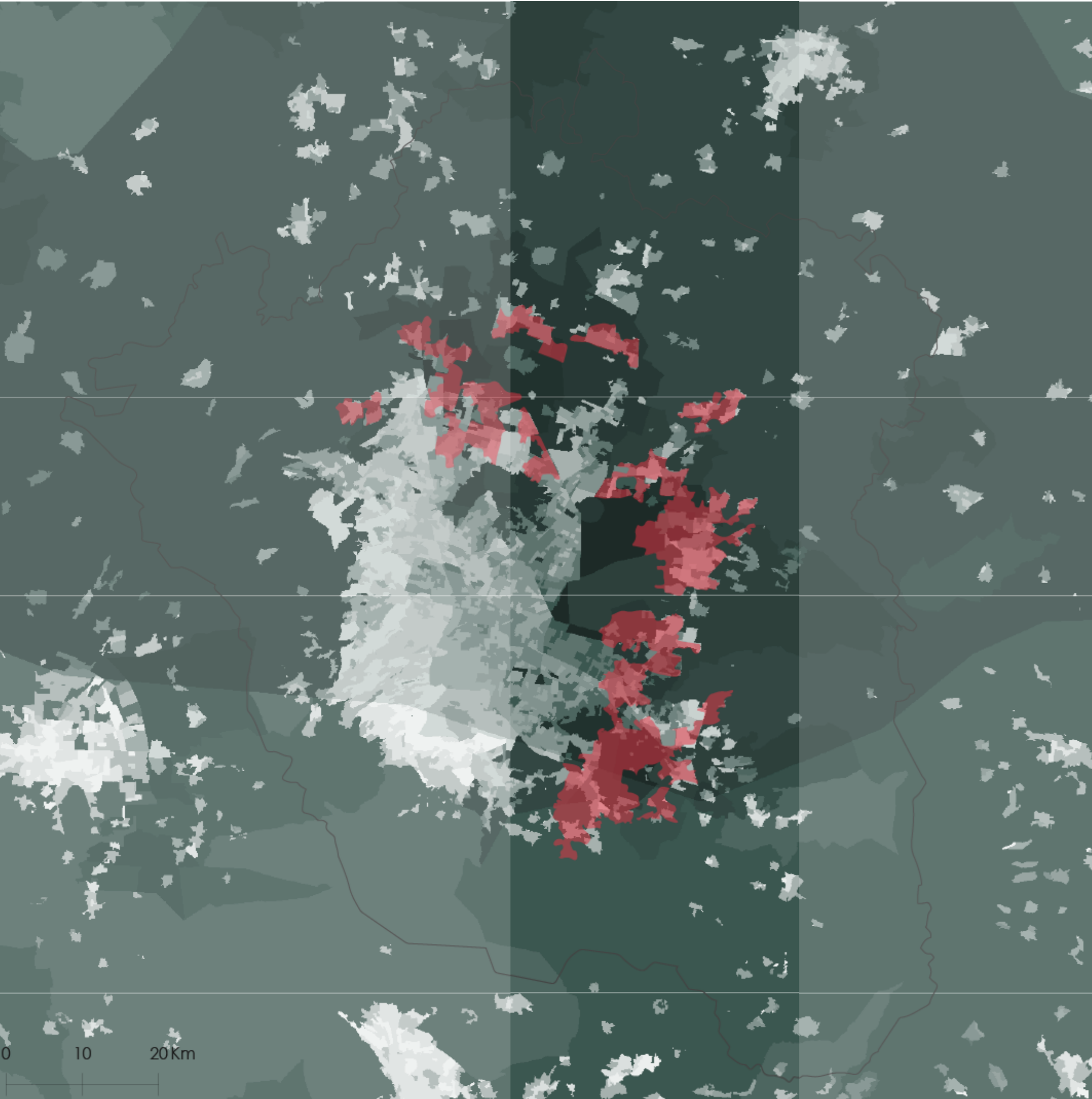
Representation model



Process (and change) model



Evaluation (and impact) model



Decision model

Scenario 1: Investment as the system works now (shown here)

Scenario 2: Investment in the ecological capacities

Scenario 3: Investment in the social and ecological capacities