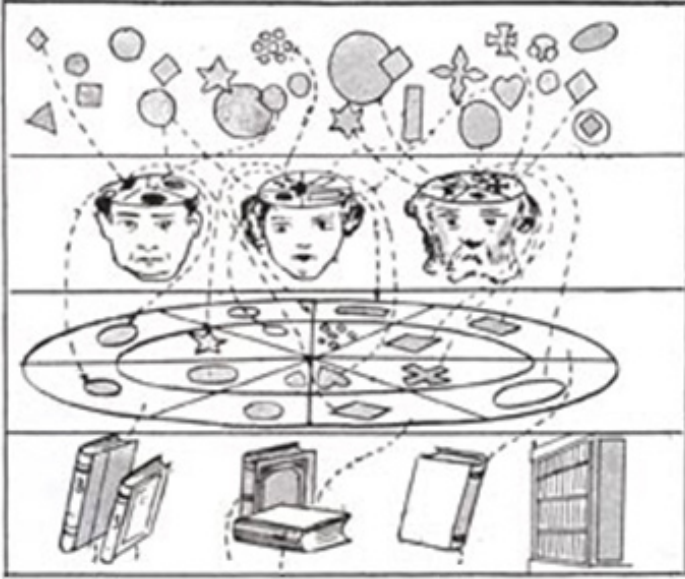
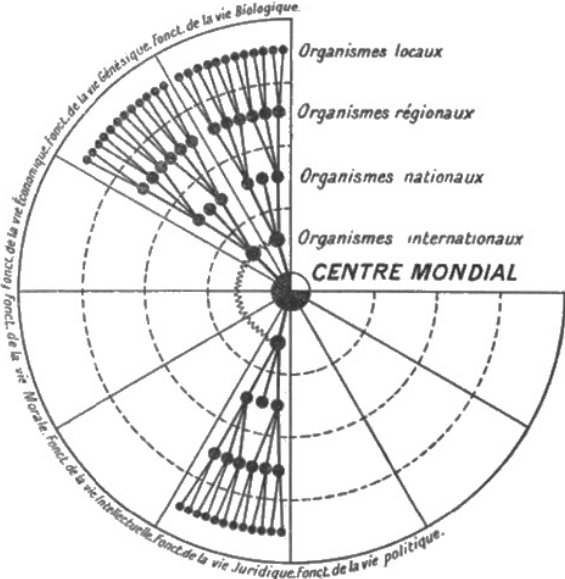


BROADCASTING & CULTURAL MUNDANEUM

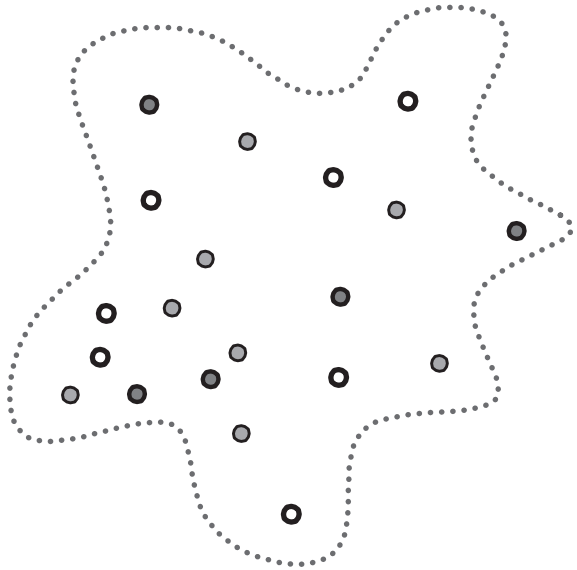
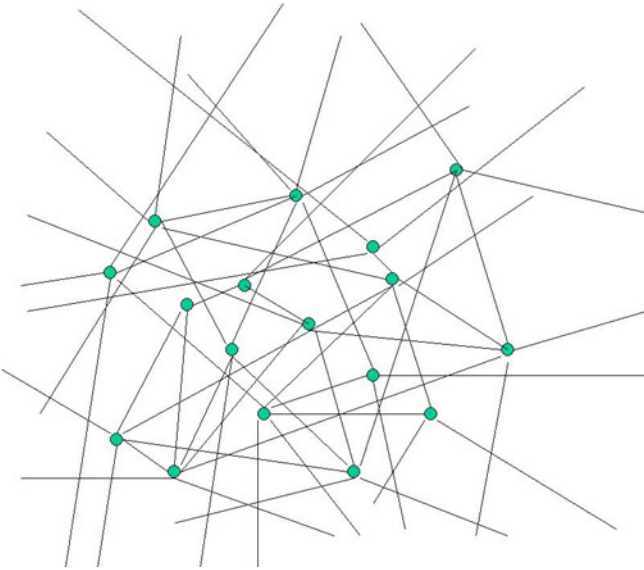
Graduation project in PUBLIC REALM studio

CS HWANG

original mudaneum
: social apparatus of knowledge



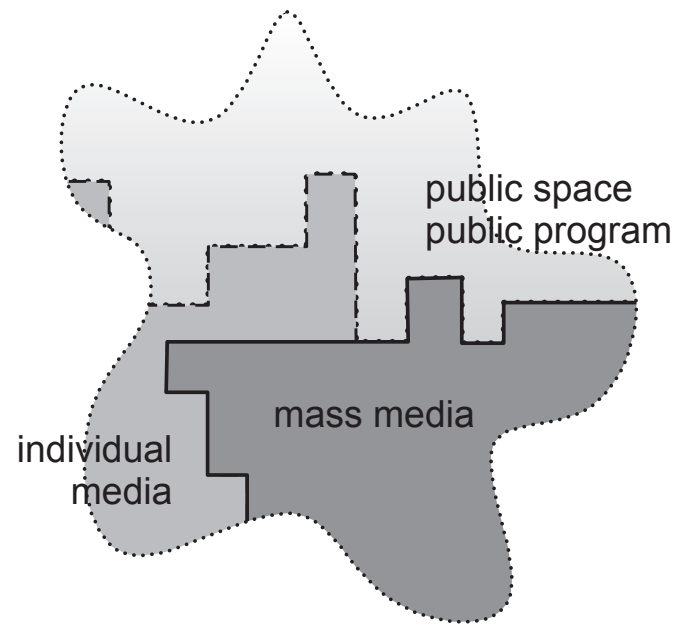
current society
: information / networking

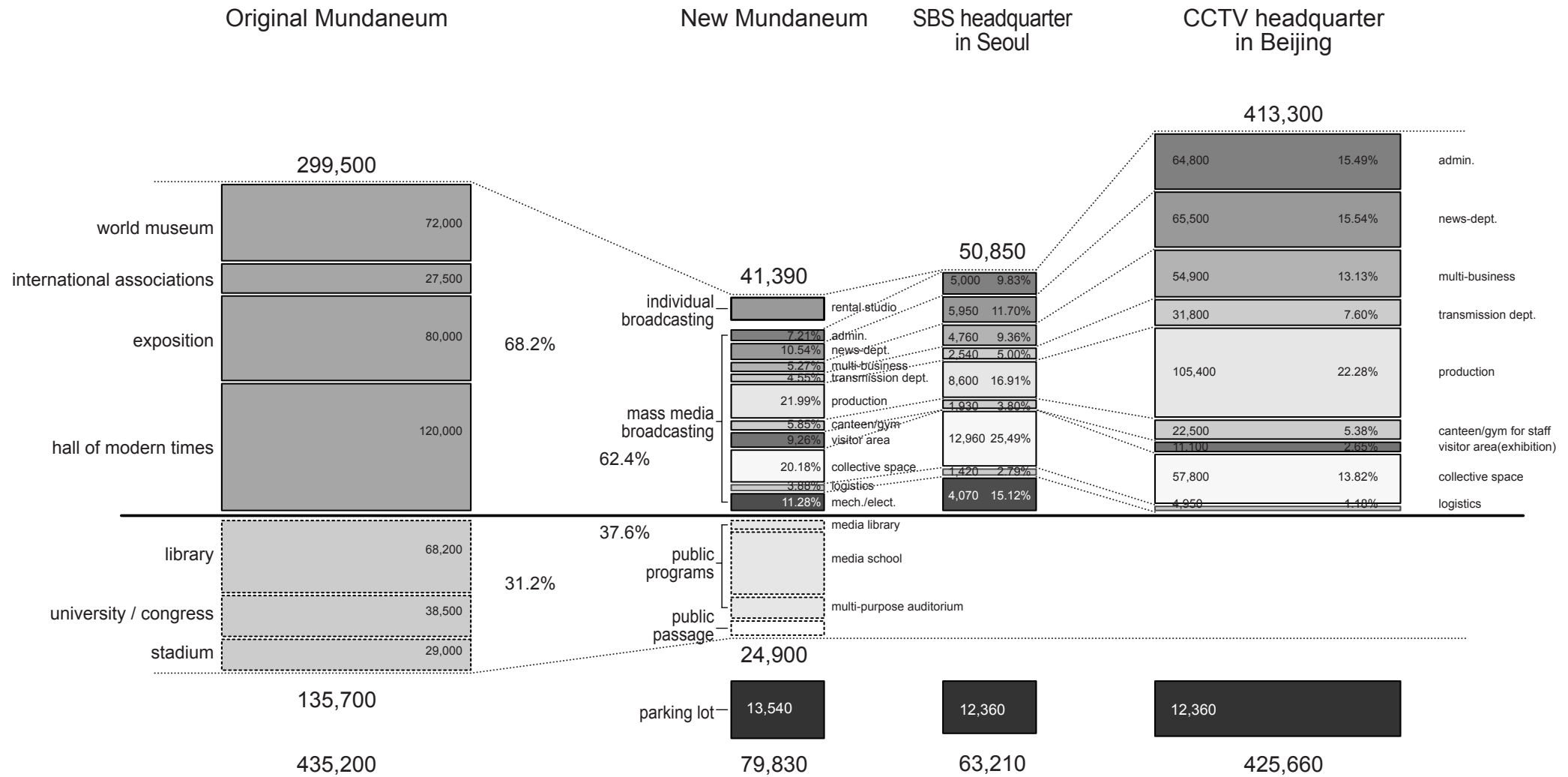




convergence

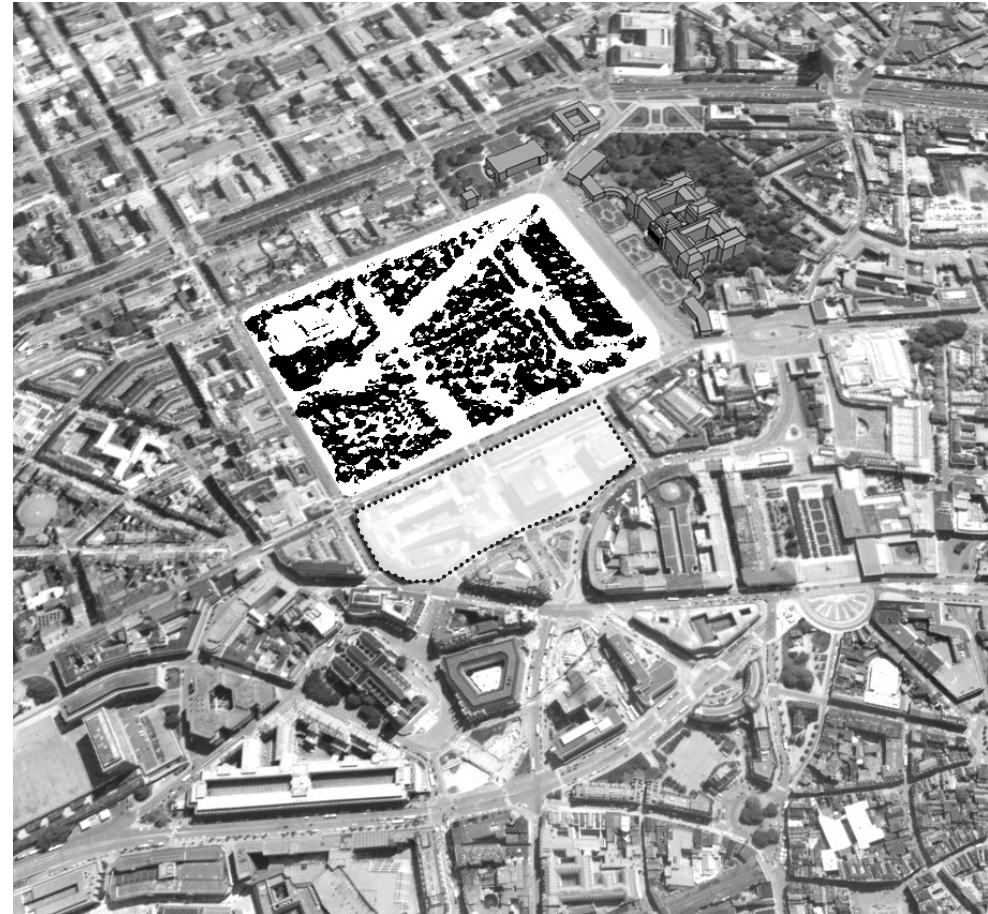
: individual medial / mass media /
public space / public program





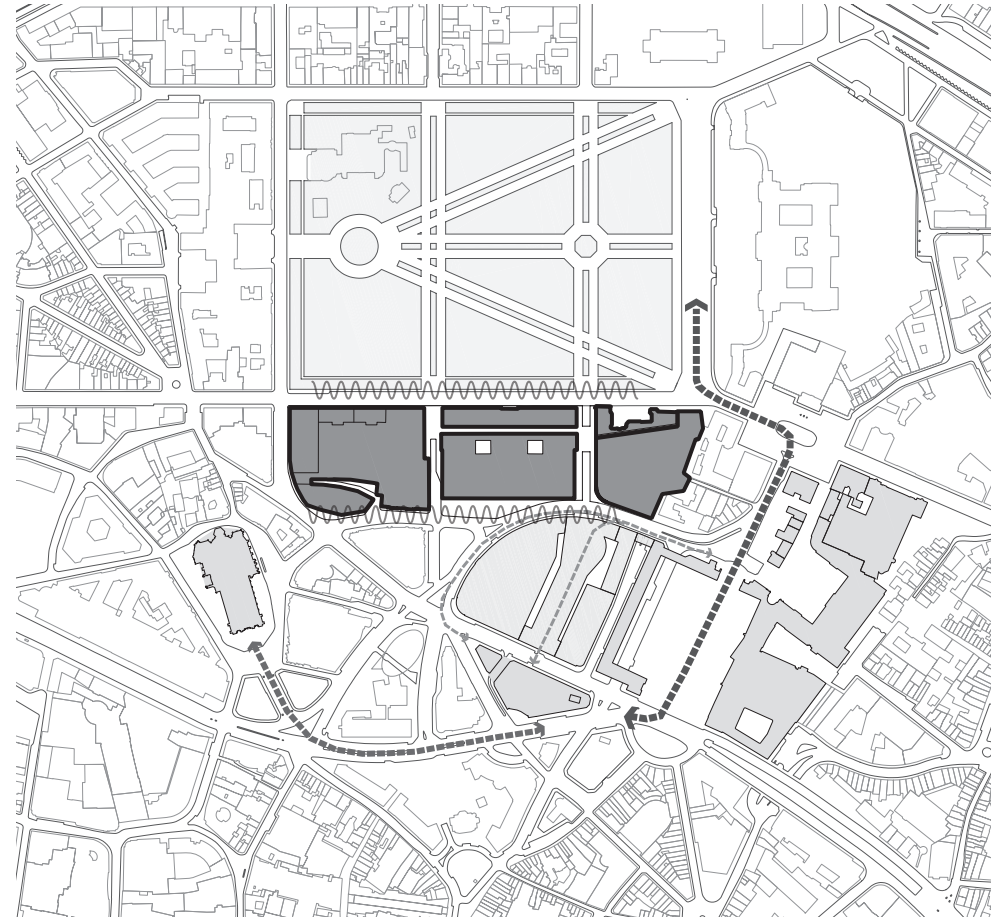
Park of Brussels in Pentagon

- : historically important place
- : fragmented / marginalized

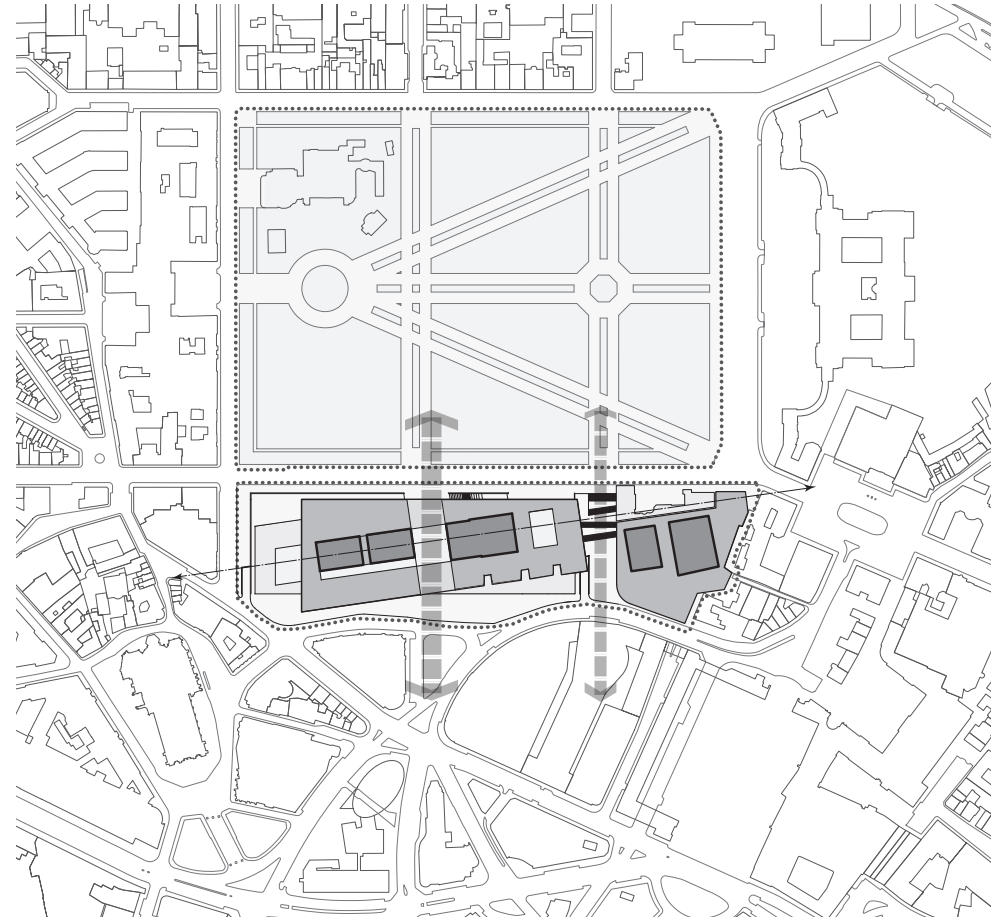


current situation

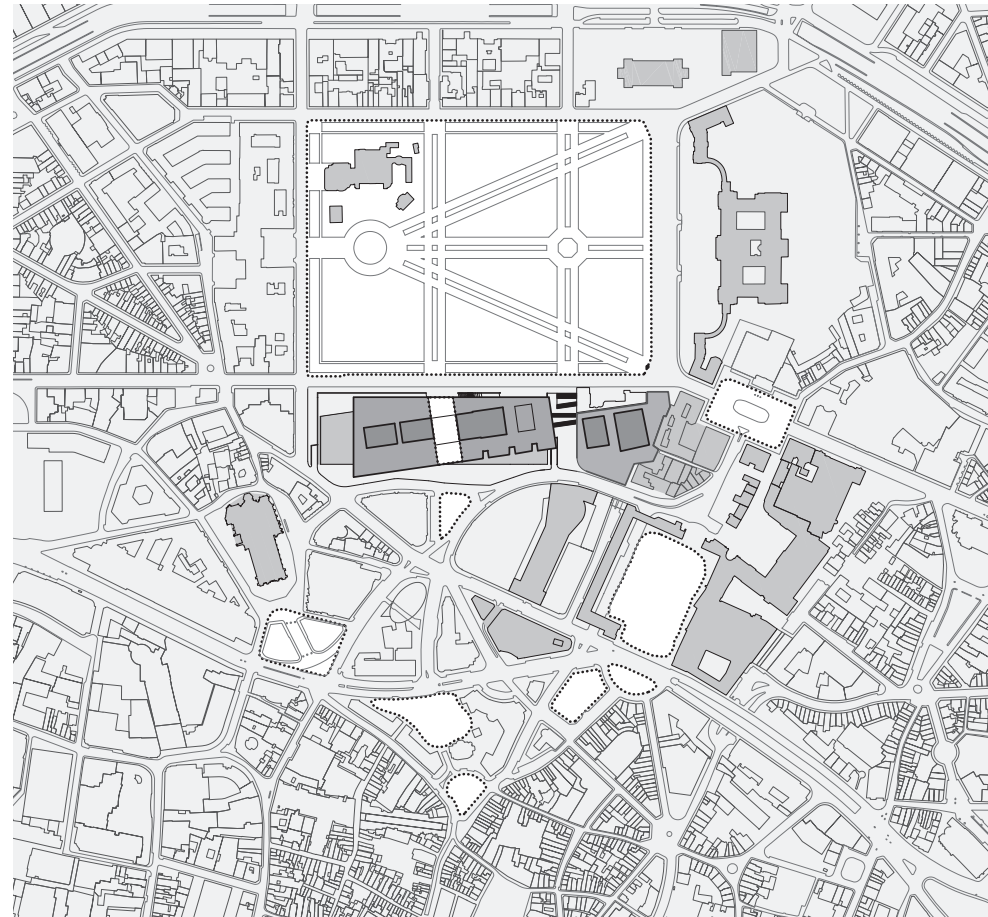
: physical barrier
between lower level and upper level in Brussels

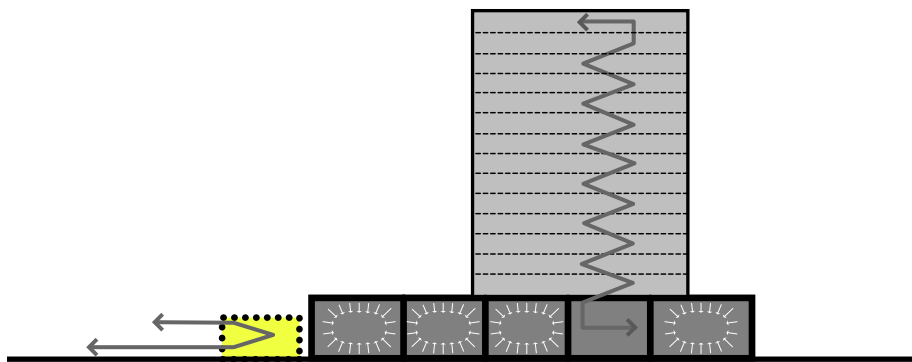


urban intervention
: integration with context / permeability



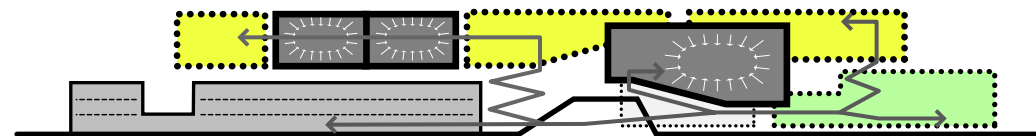
urban intervention
: clustering urban cultural facilities with public space





verticality
/ restricted to the public

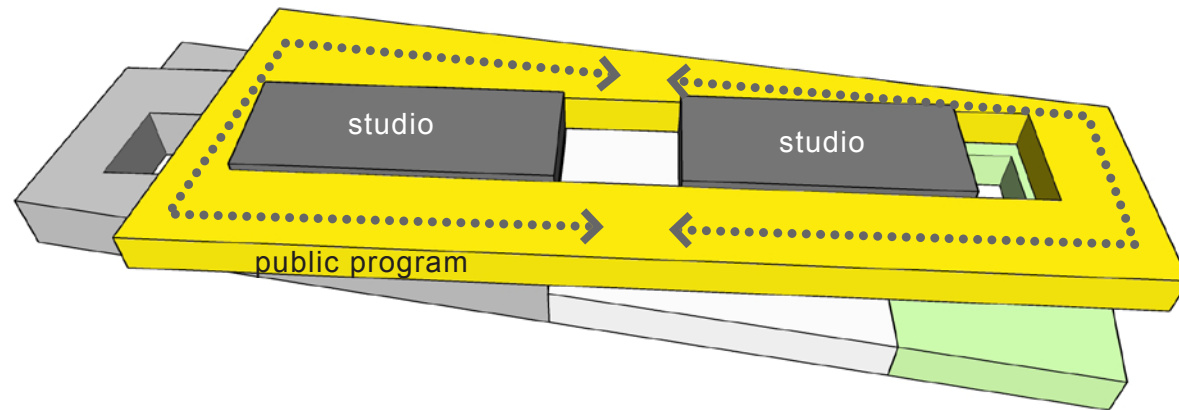
VS.



horizontality
/ convergence with public programs

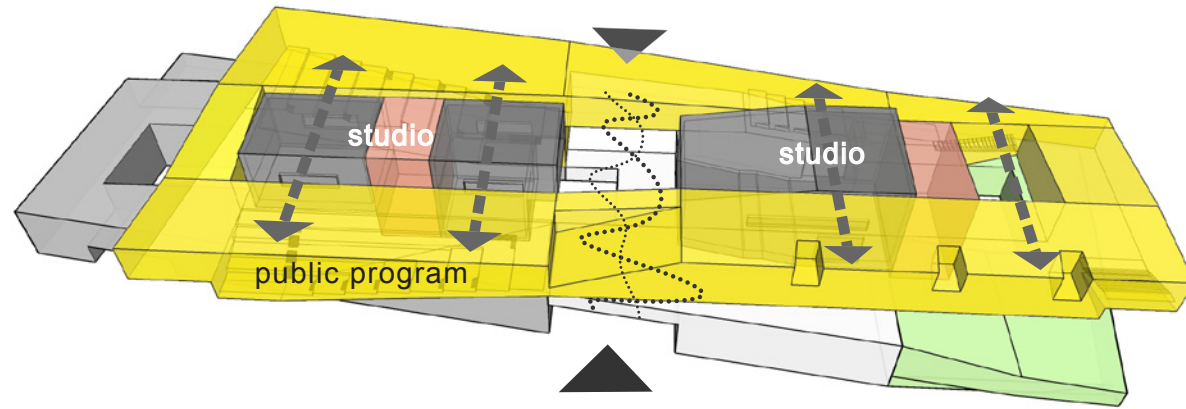
studio/black boxes surrounded
by public program

black boxes : creating place
public program : participated place



spatial interrelationship
between different programs

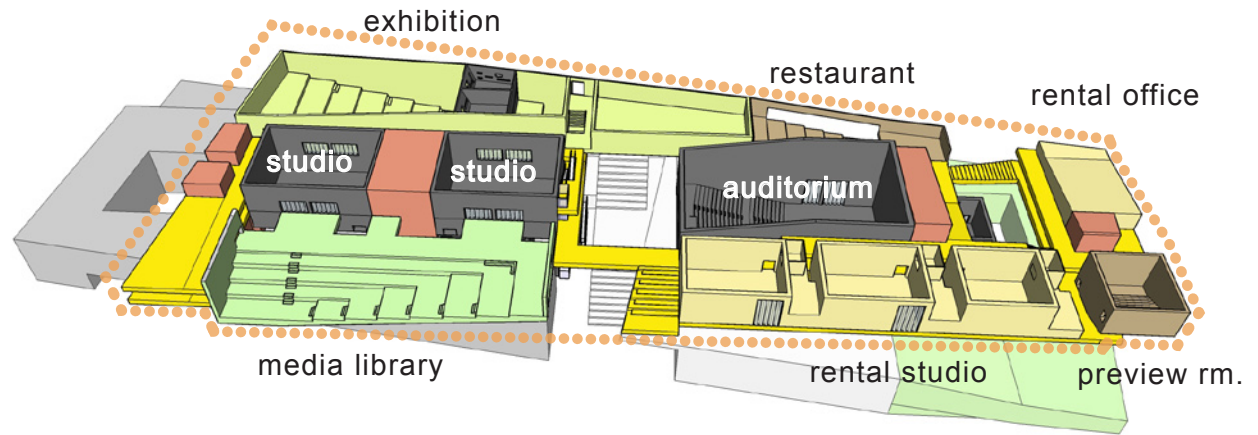
visual connection
permeability in urban tissue



public programs
in upper mass

for general public
: exhibition / media library / restaurant

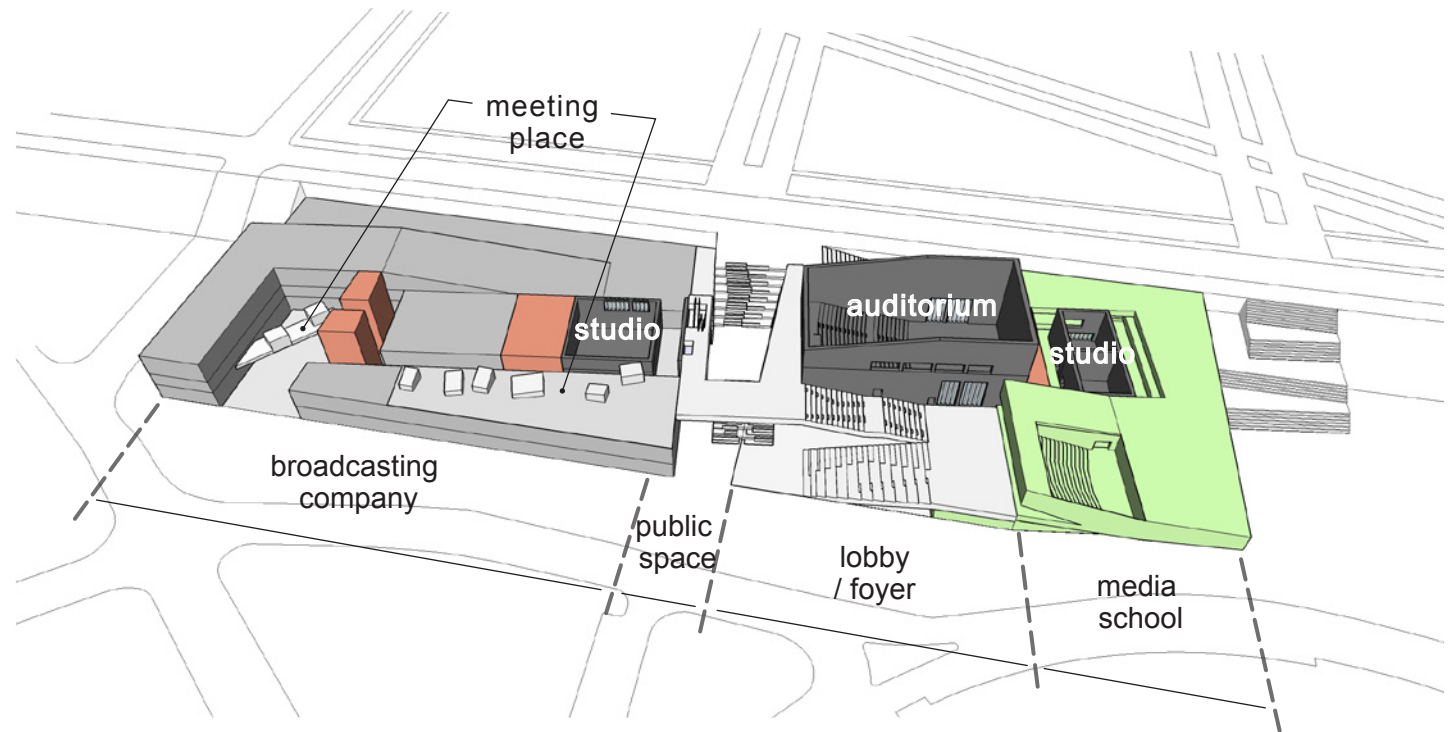
for individual broadcaster
: rental studio / office / preview rm. / media library



spatial organization
in lower mass

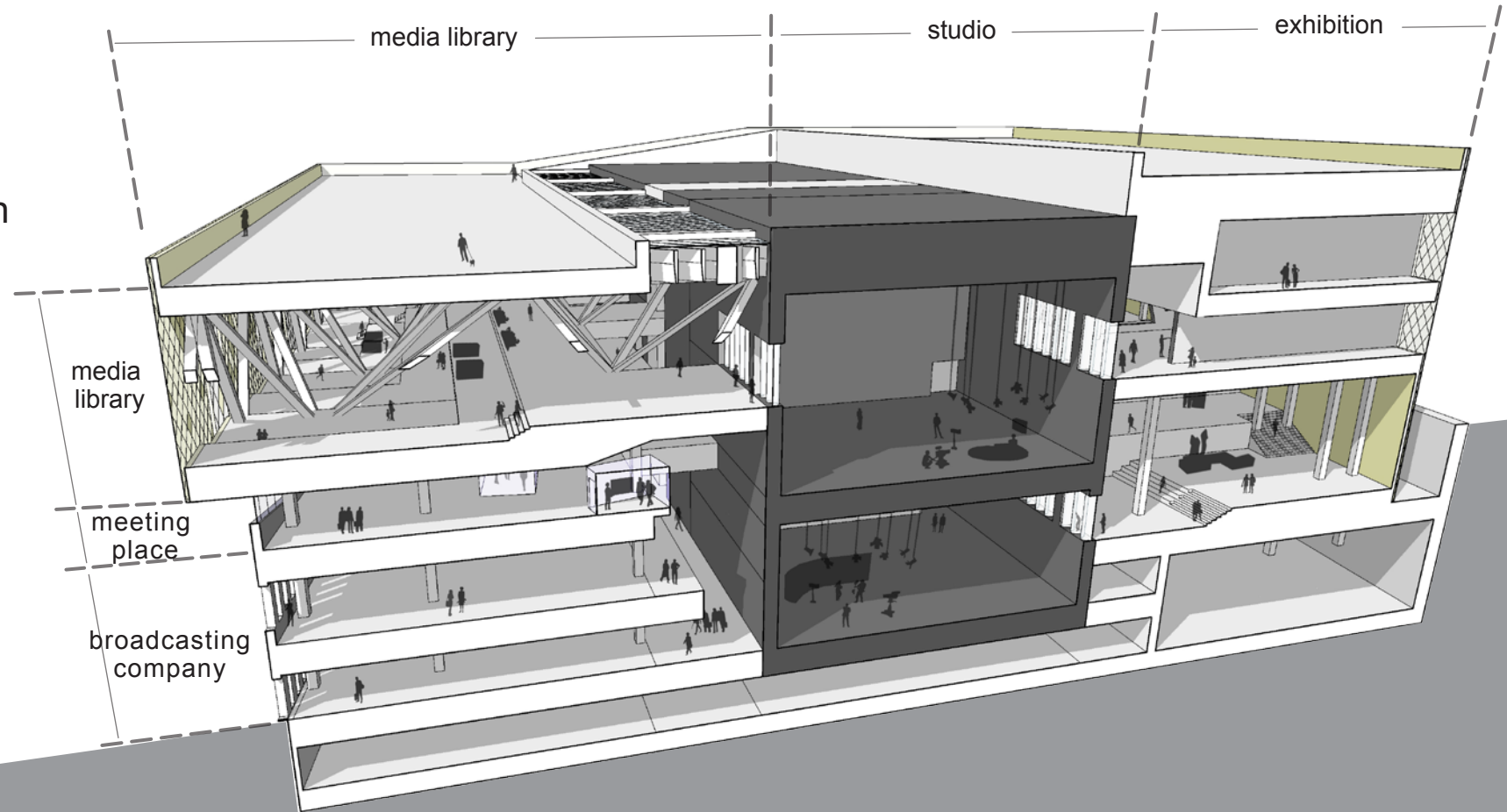
for general public
: public space
/ open studio / auditorium / media school

for professional broadcaster
: broadcasting company / auditorium



sectional composition

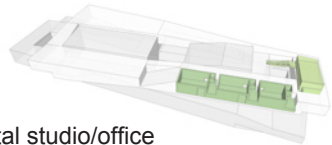
spatial connection
between different programs



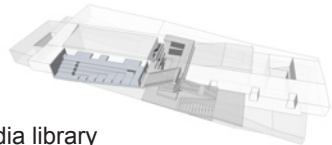
categorization of programs

supporting system

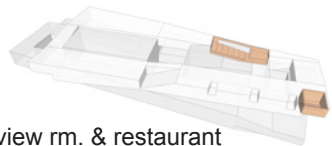
Individual broadcaster
Small Production
Semi-professional



rental studio/office



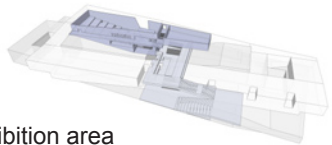
media library



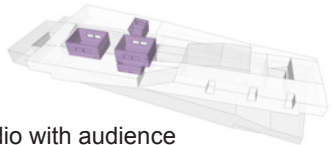
preview rm. & restaurant

experience touring / participation

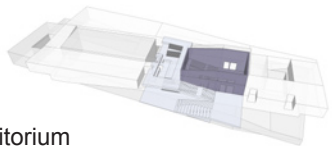
General Public
Tourist
Audience



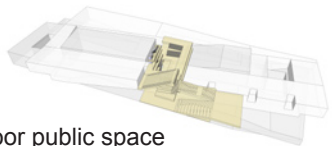
exhibition area



studio with audience
open radio studio



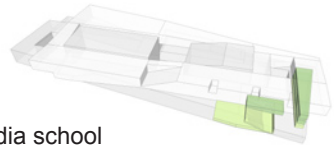
auditorium



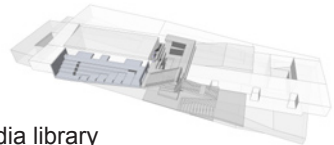
indoor public space

education

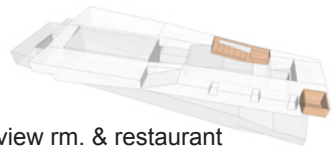
Student
General Public



media school



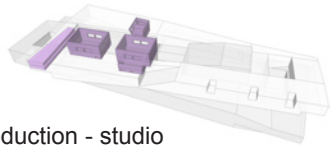
media library



preview rm. & restaurant

broadcasting company

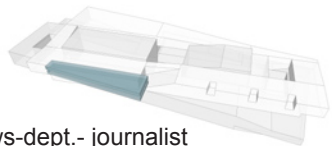
Professional
Journalist
Staff



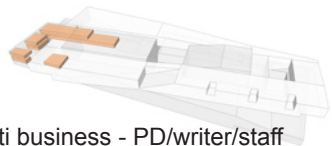
production - studio



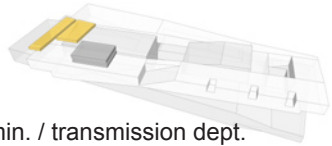
creative space - meeting place



news-dept.- journalist



multi business - PD/writer/staff

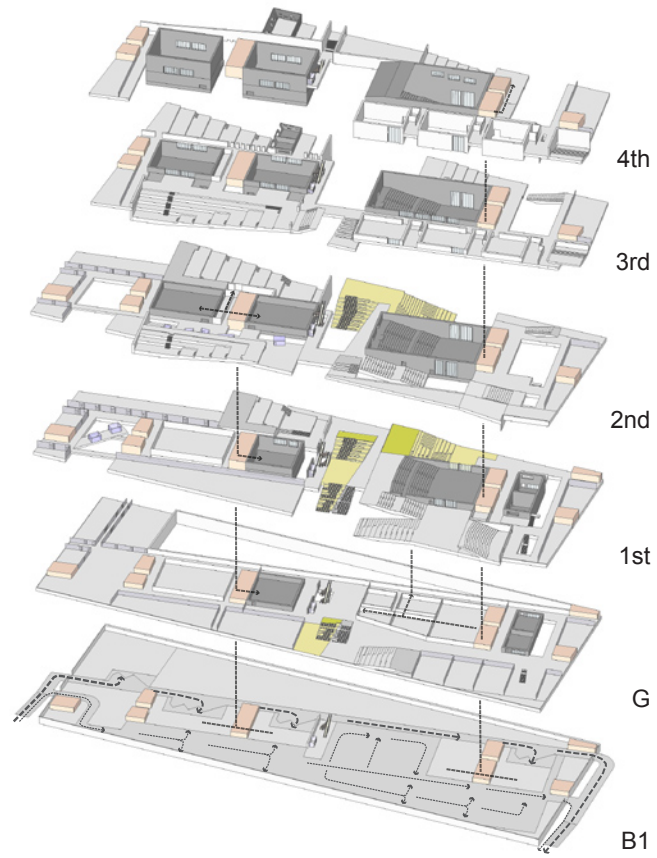


admin. / transmission dept.

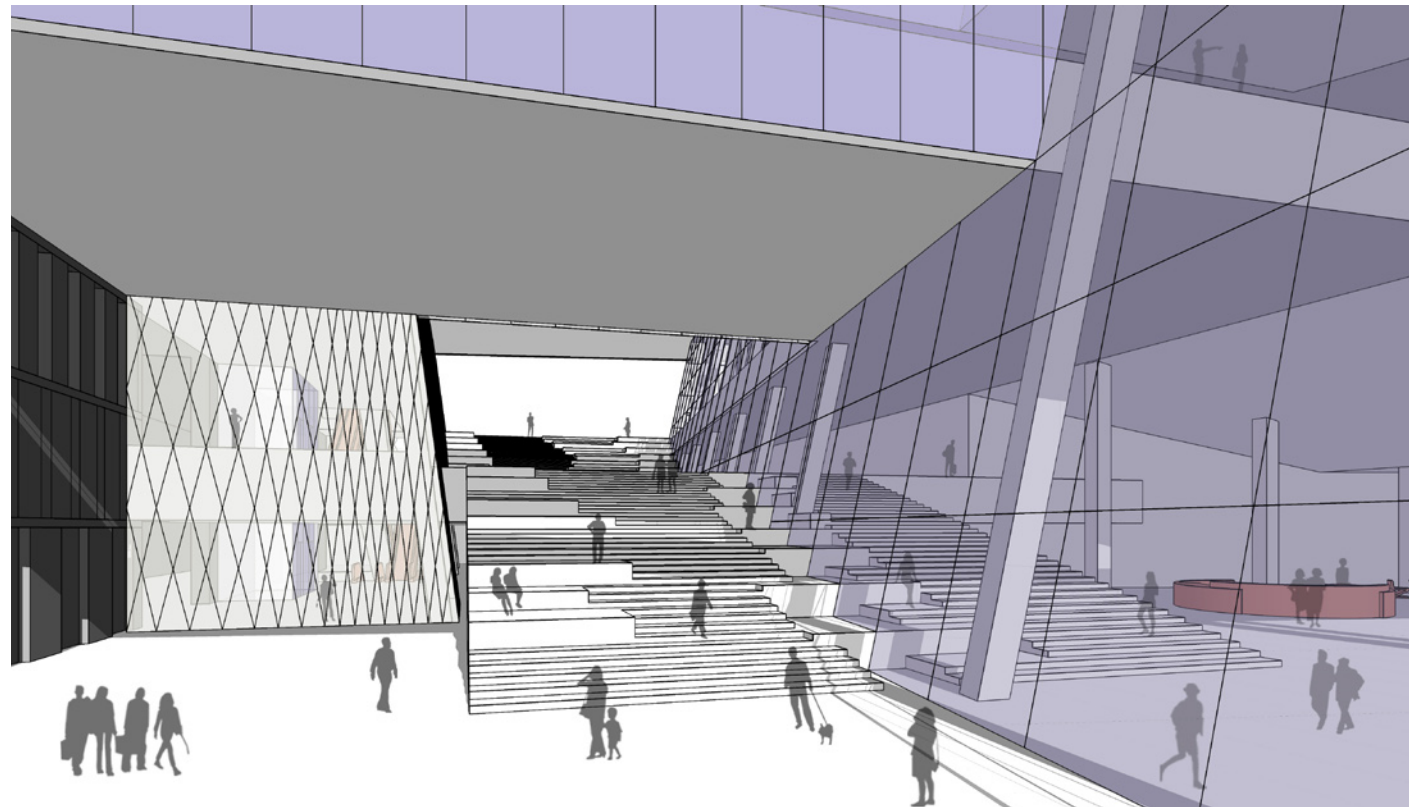
circulation / spatial experience



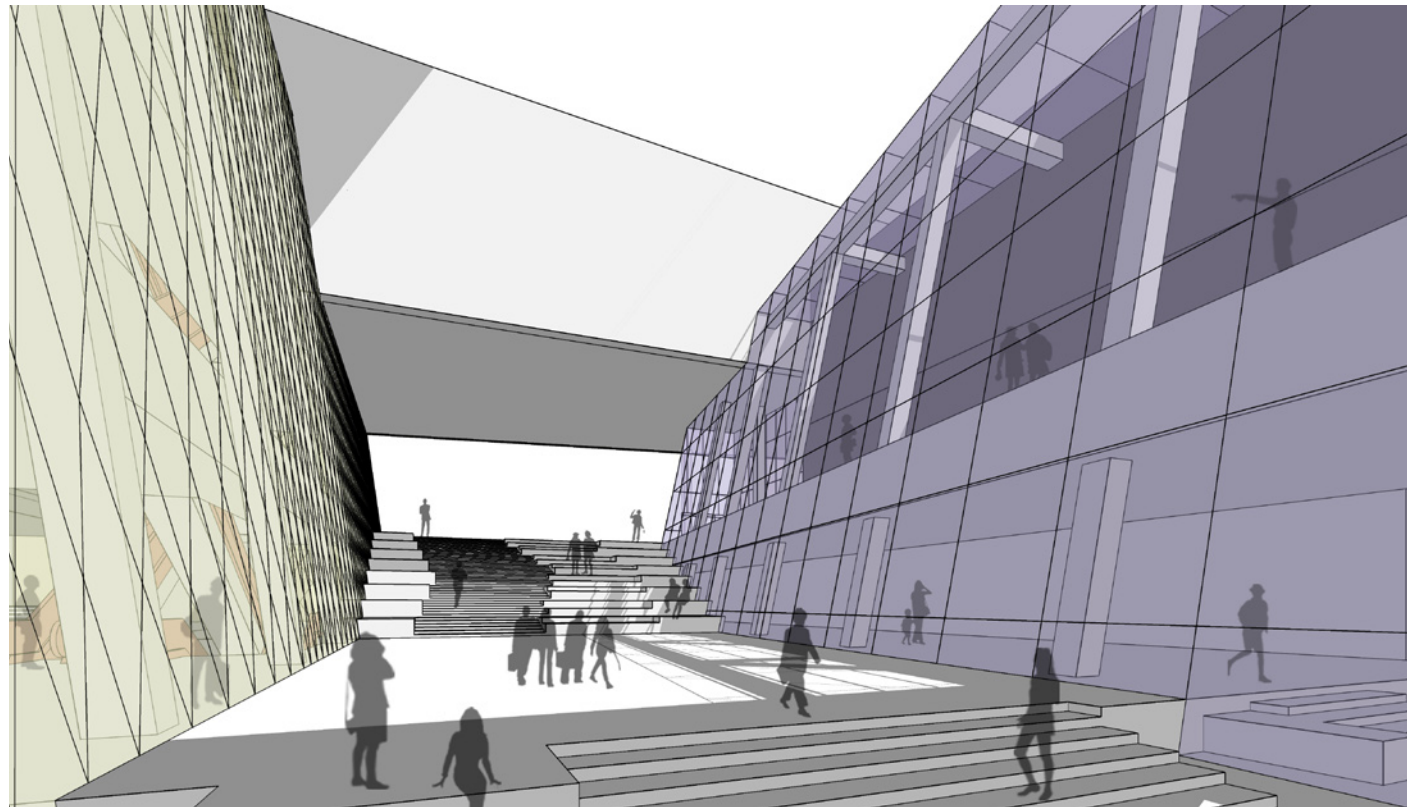
circulation / spatial experience



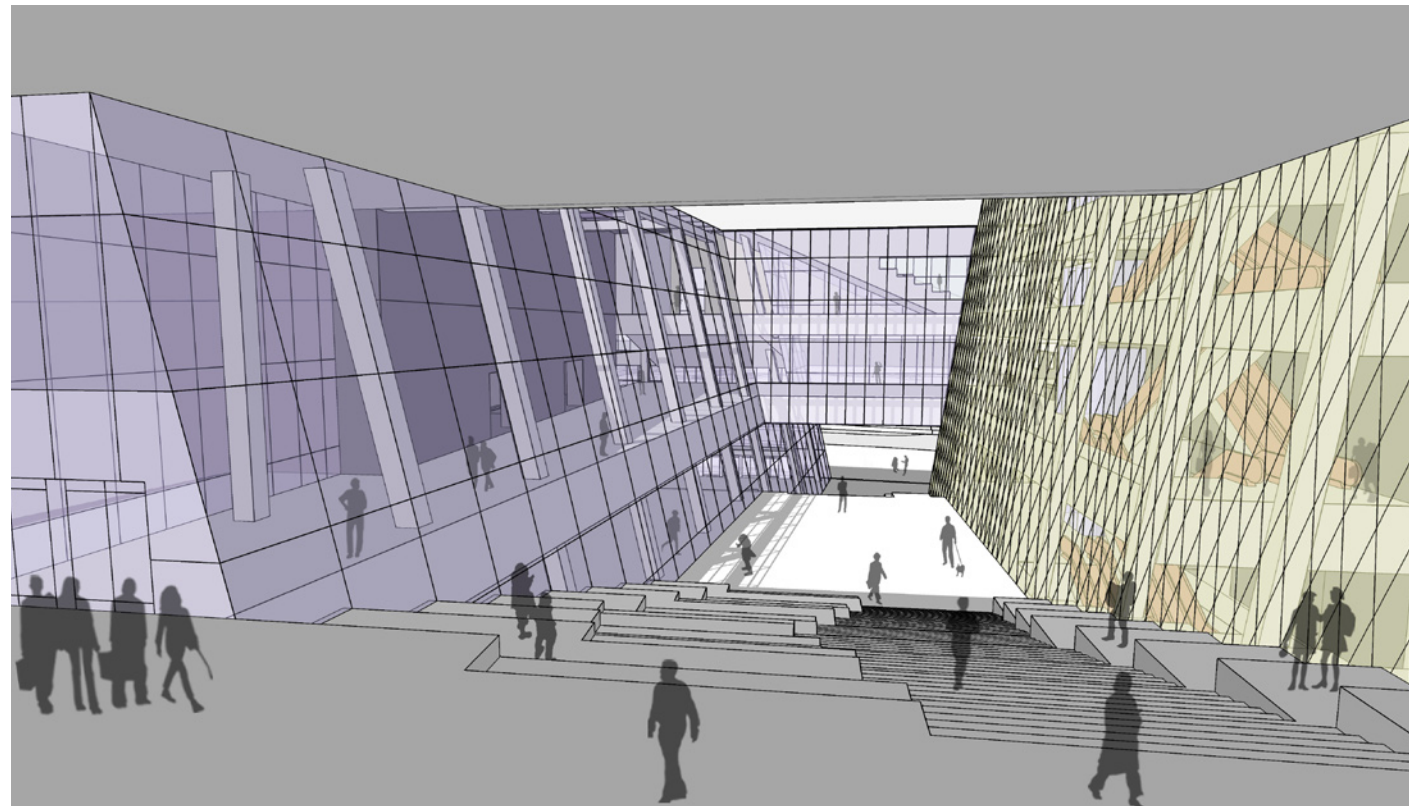
circulation / spatial experience



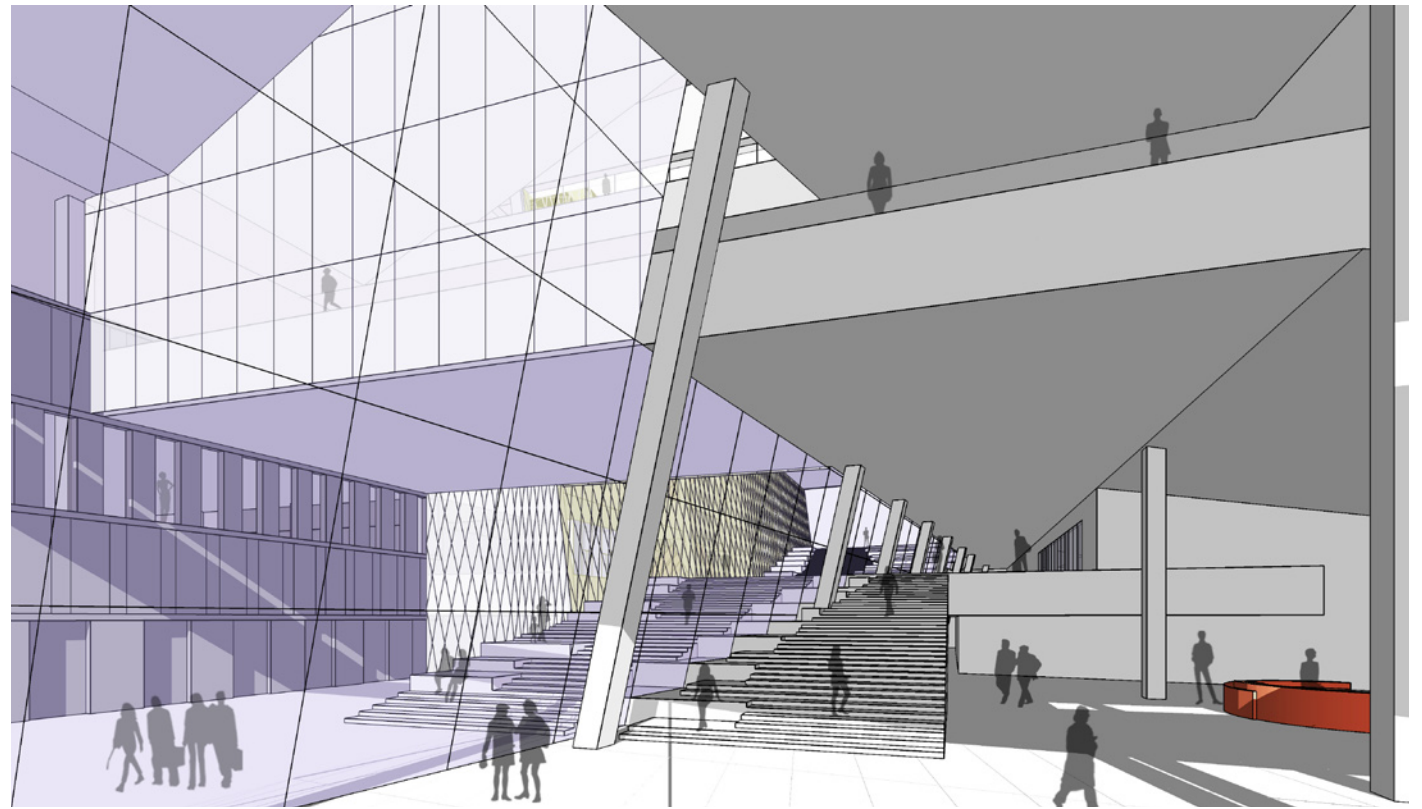
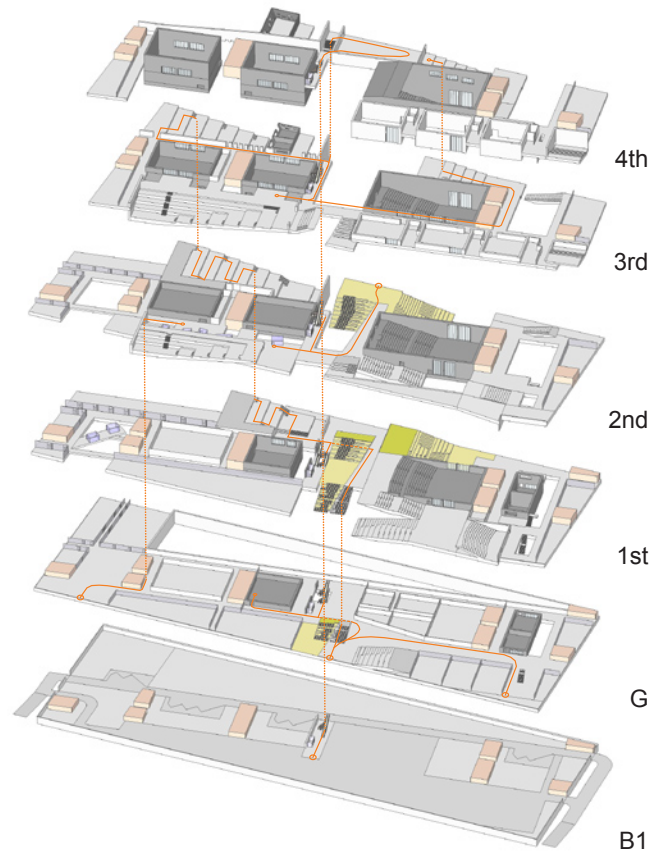
circulation / spatial experience



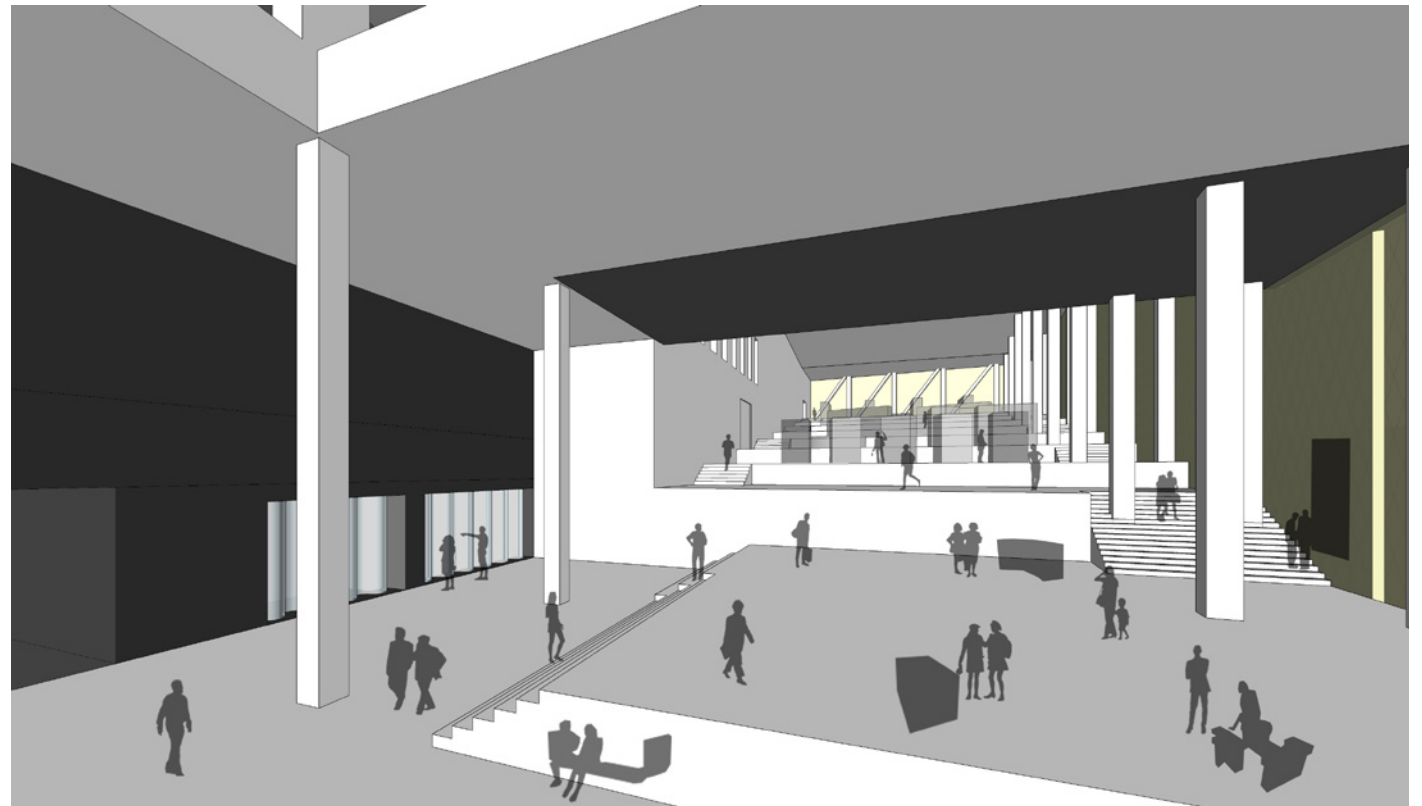
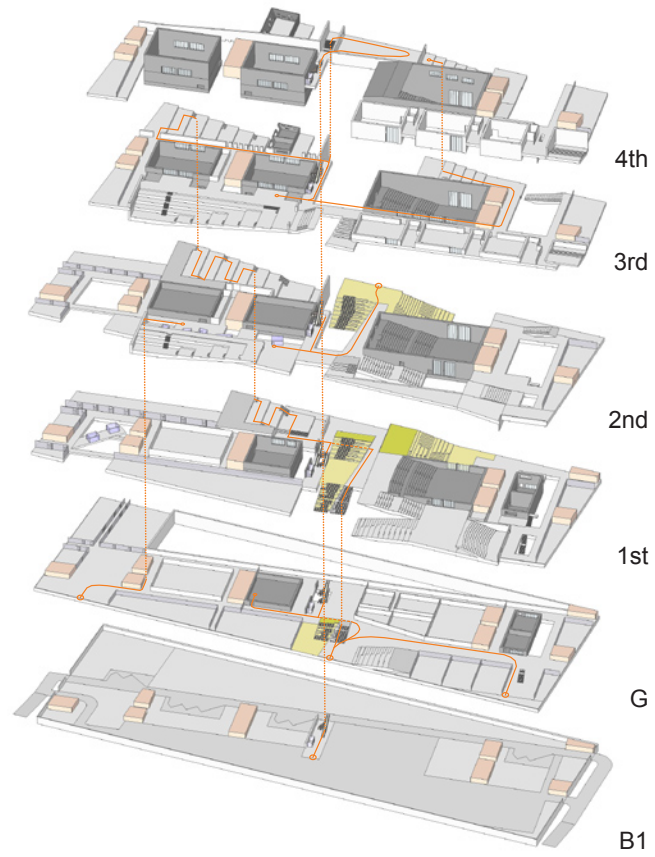
circulation / spatial experience



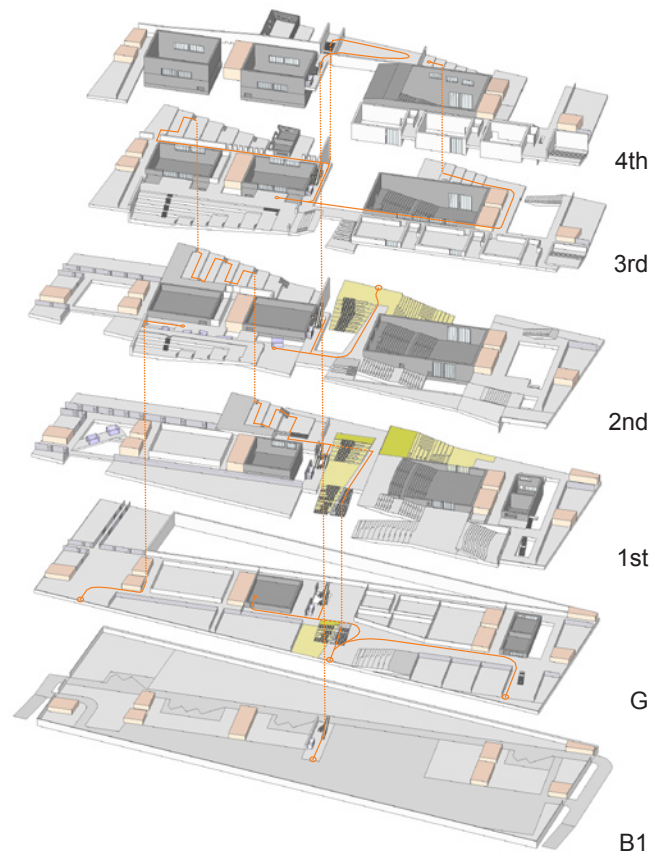
circulation / spatial experience



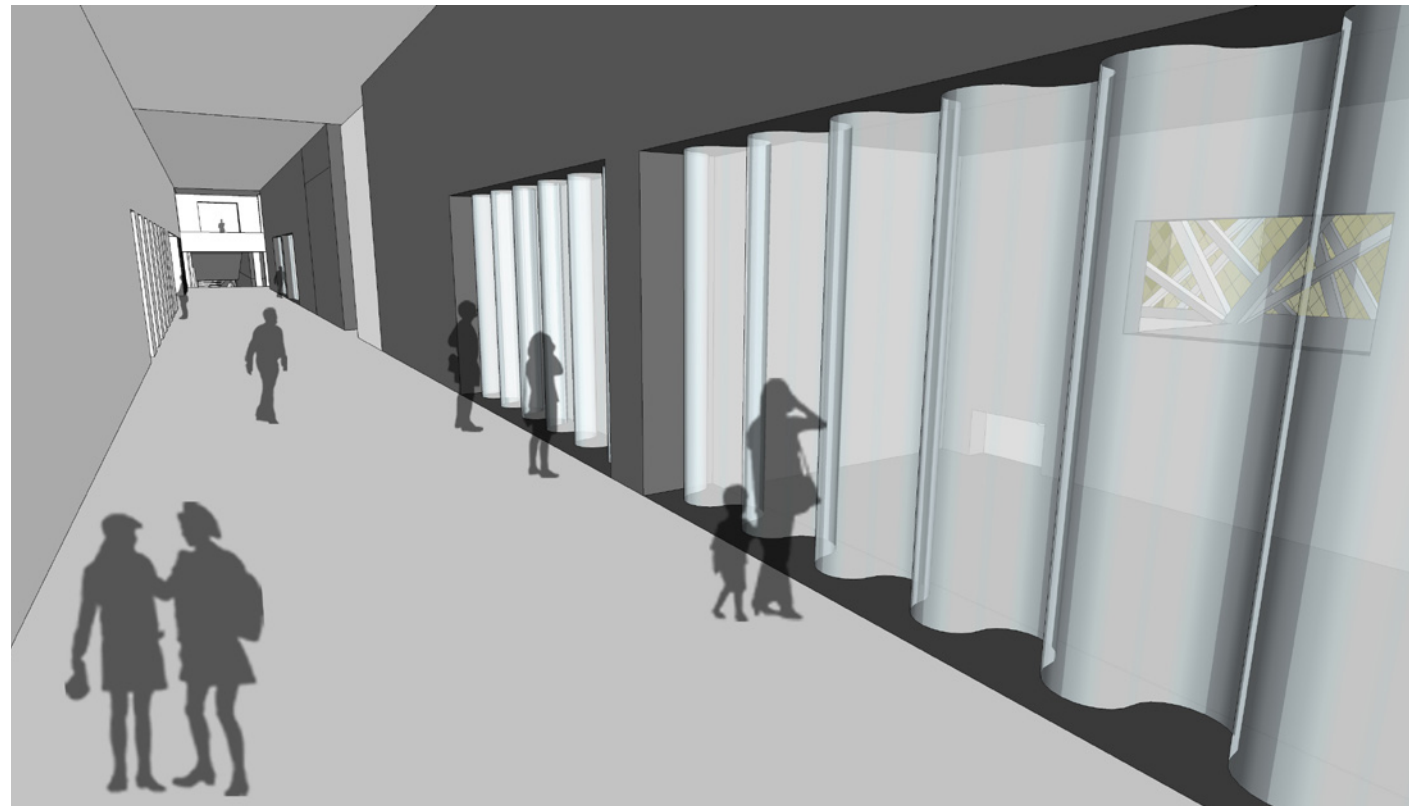
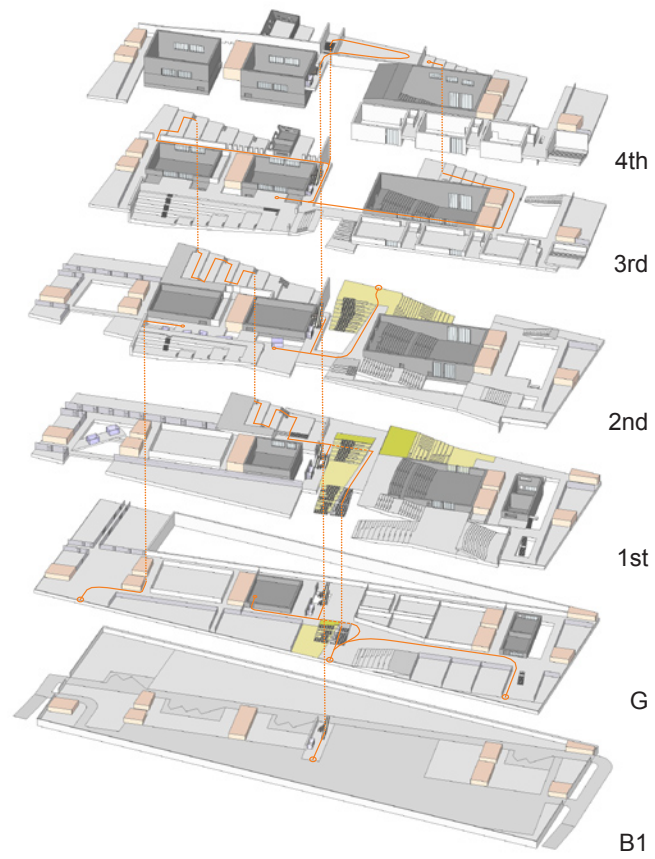
circulation / spatial experience



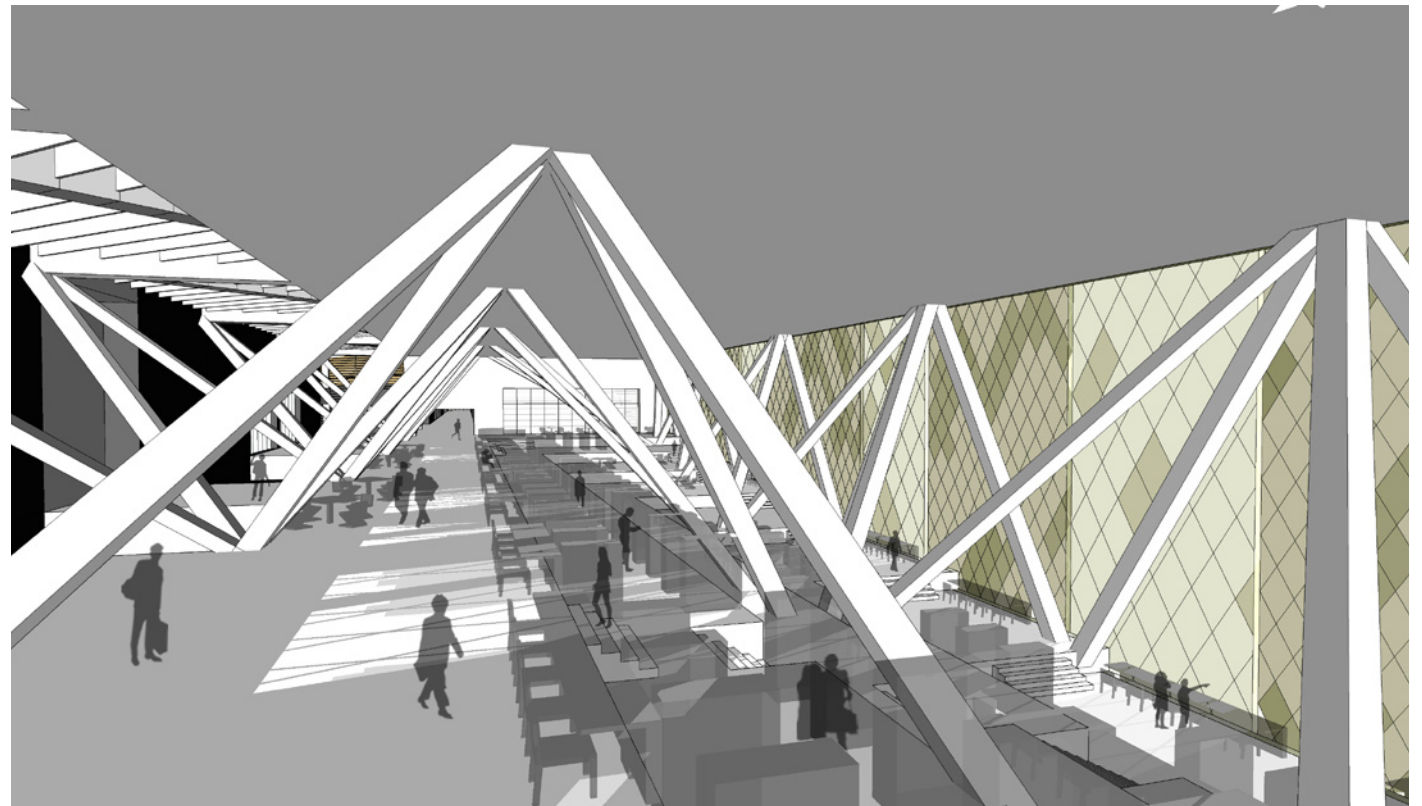
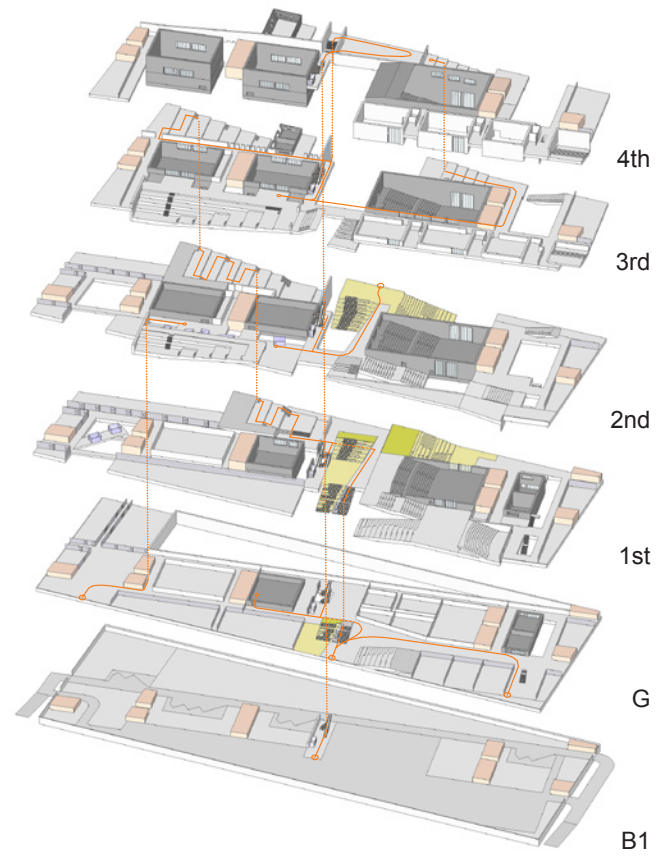
circulation / spatial experience



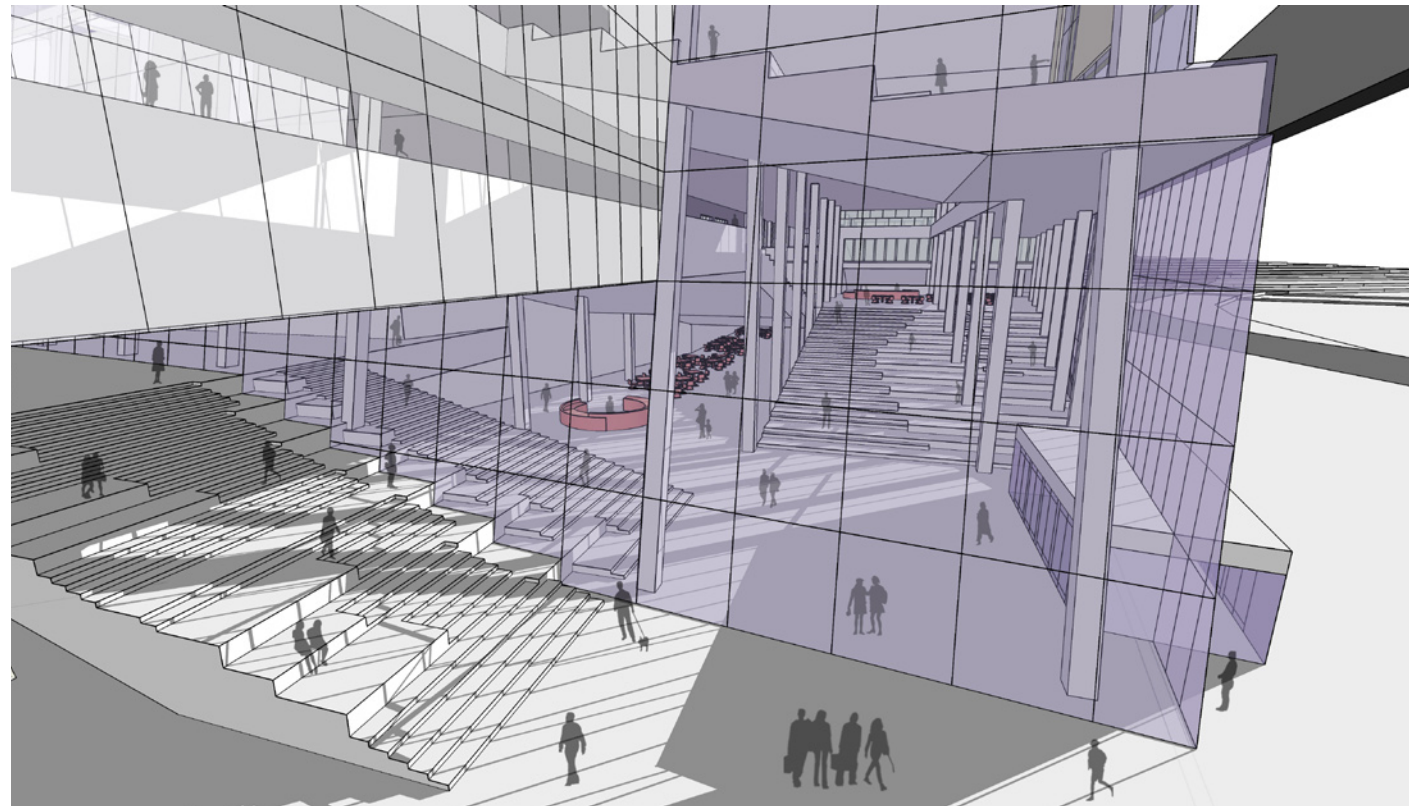
circulation / spatial experience



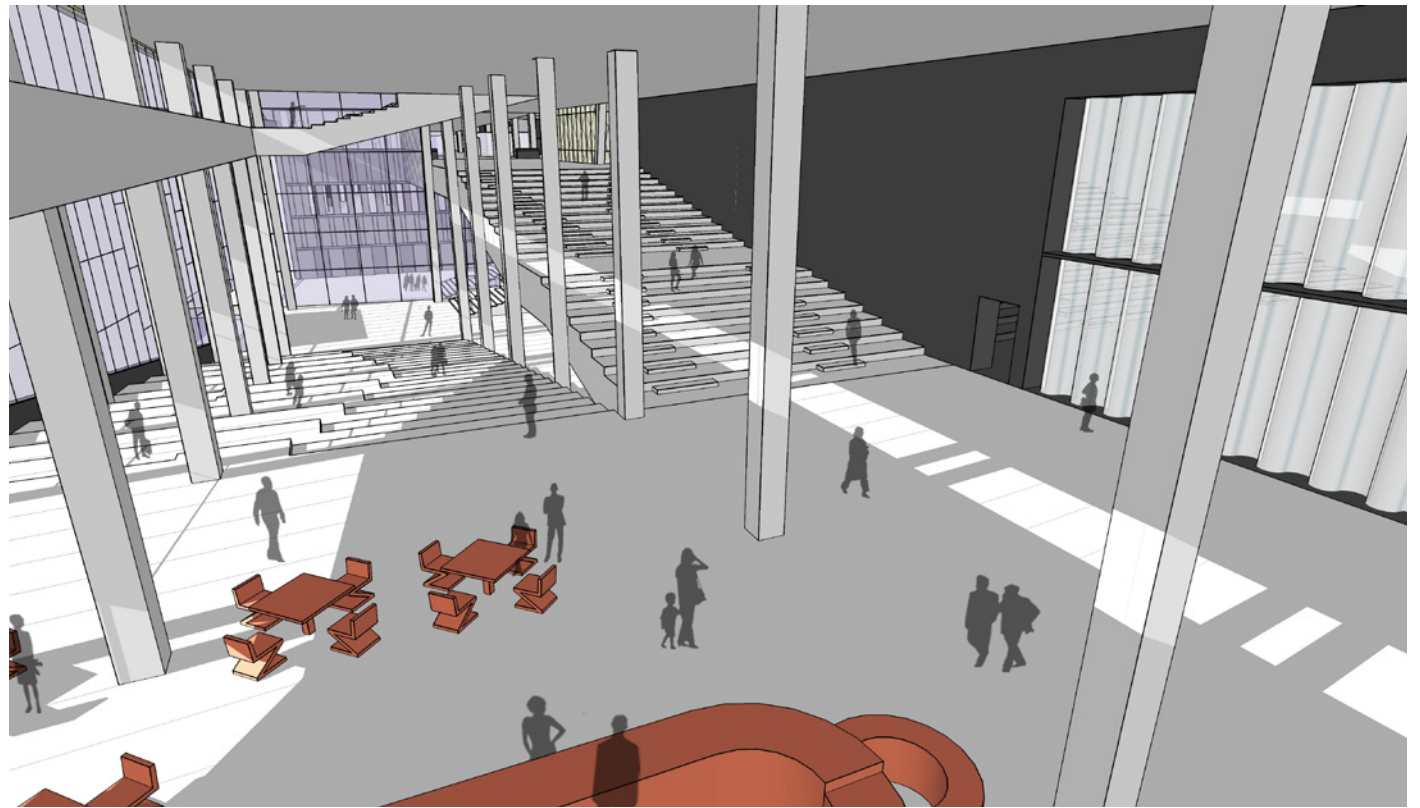
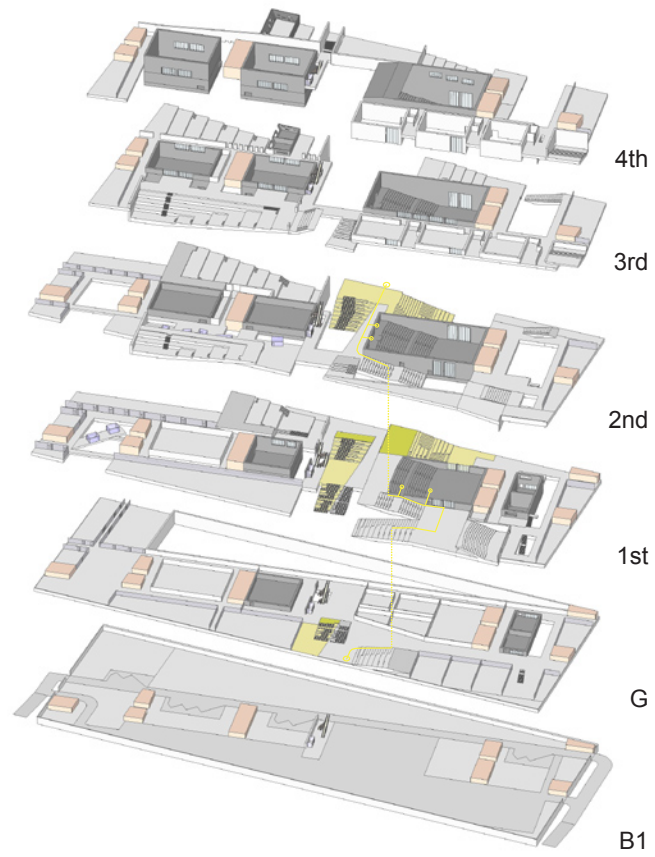
circulation / spatial experience



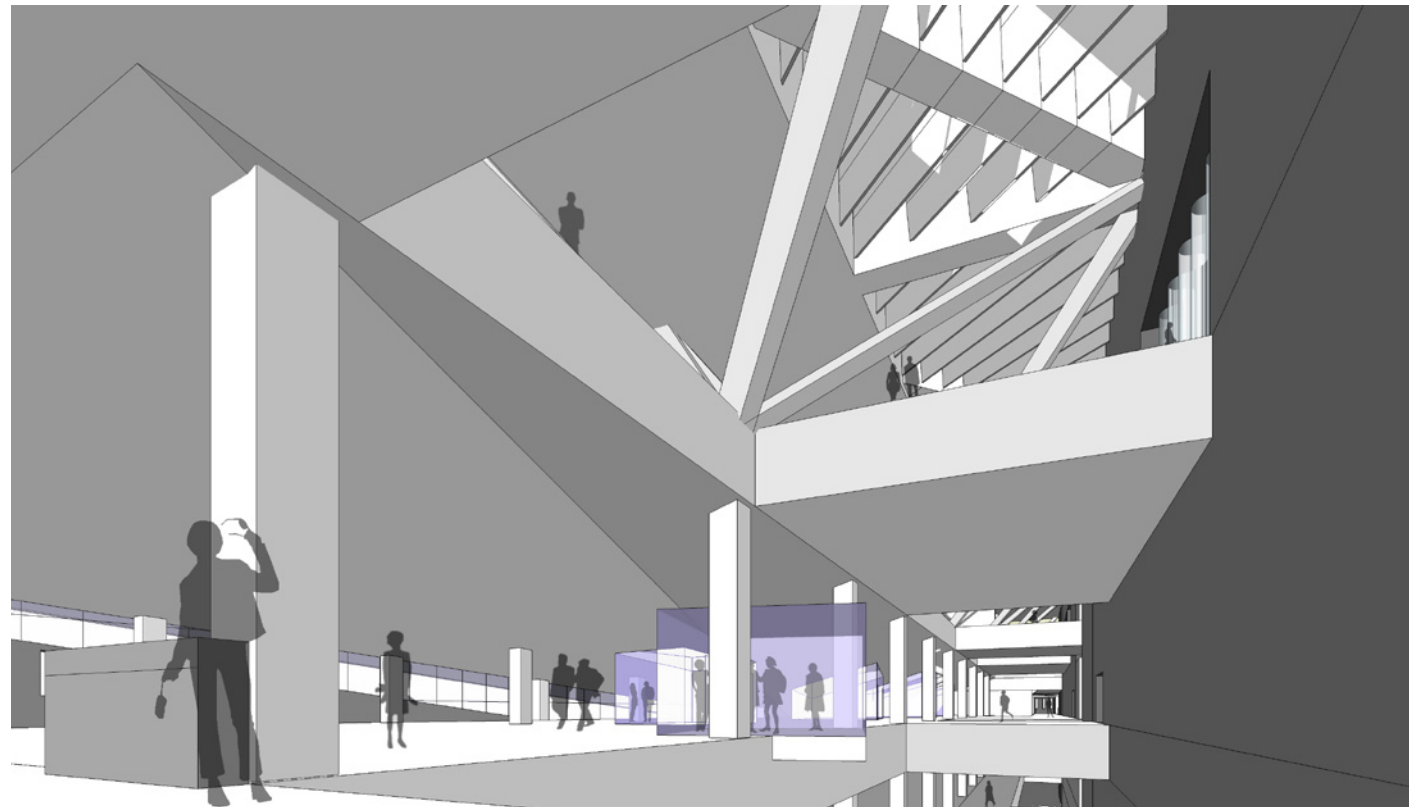
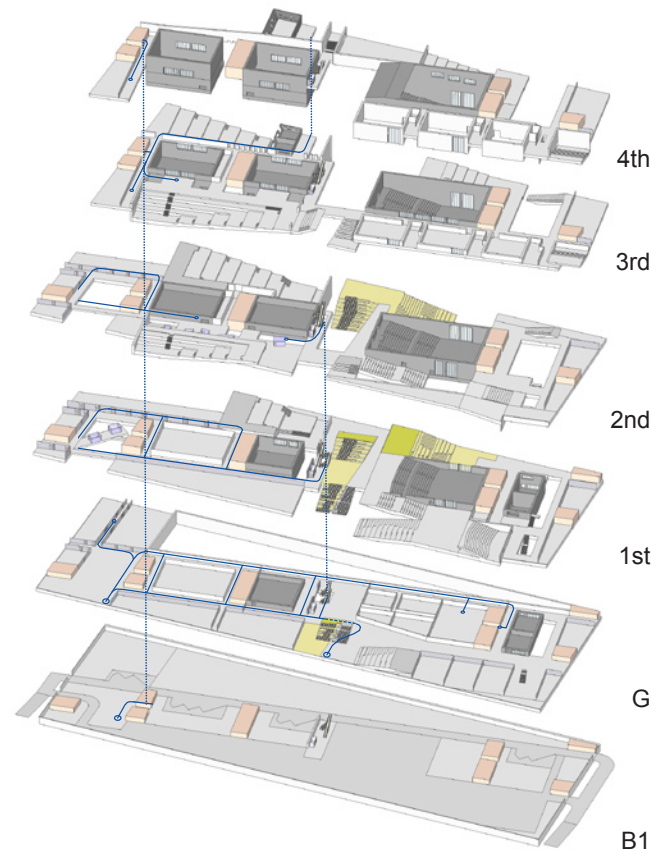
circulation / spatial experience



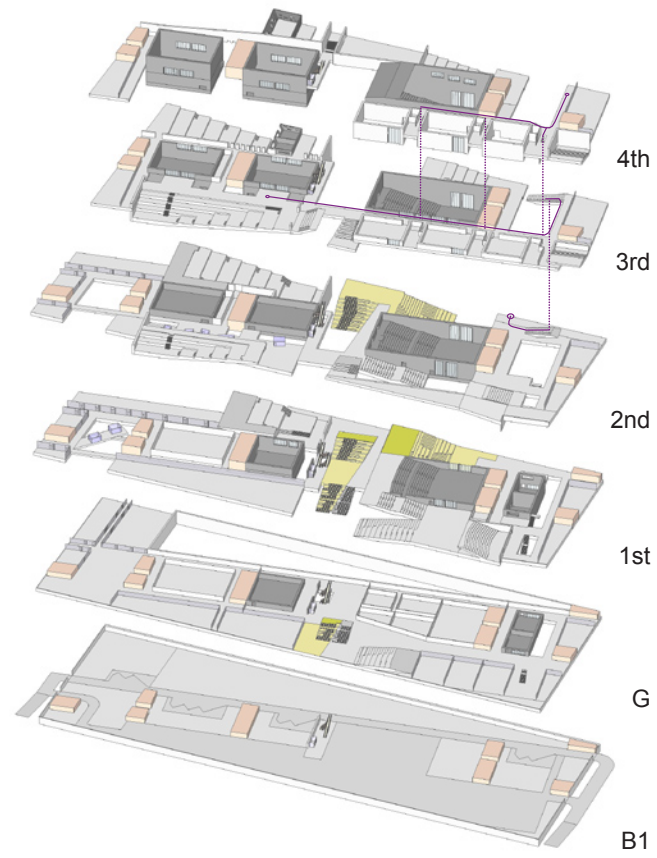
circulation / spatial experience



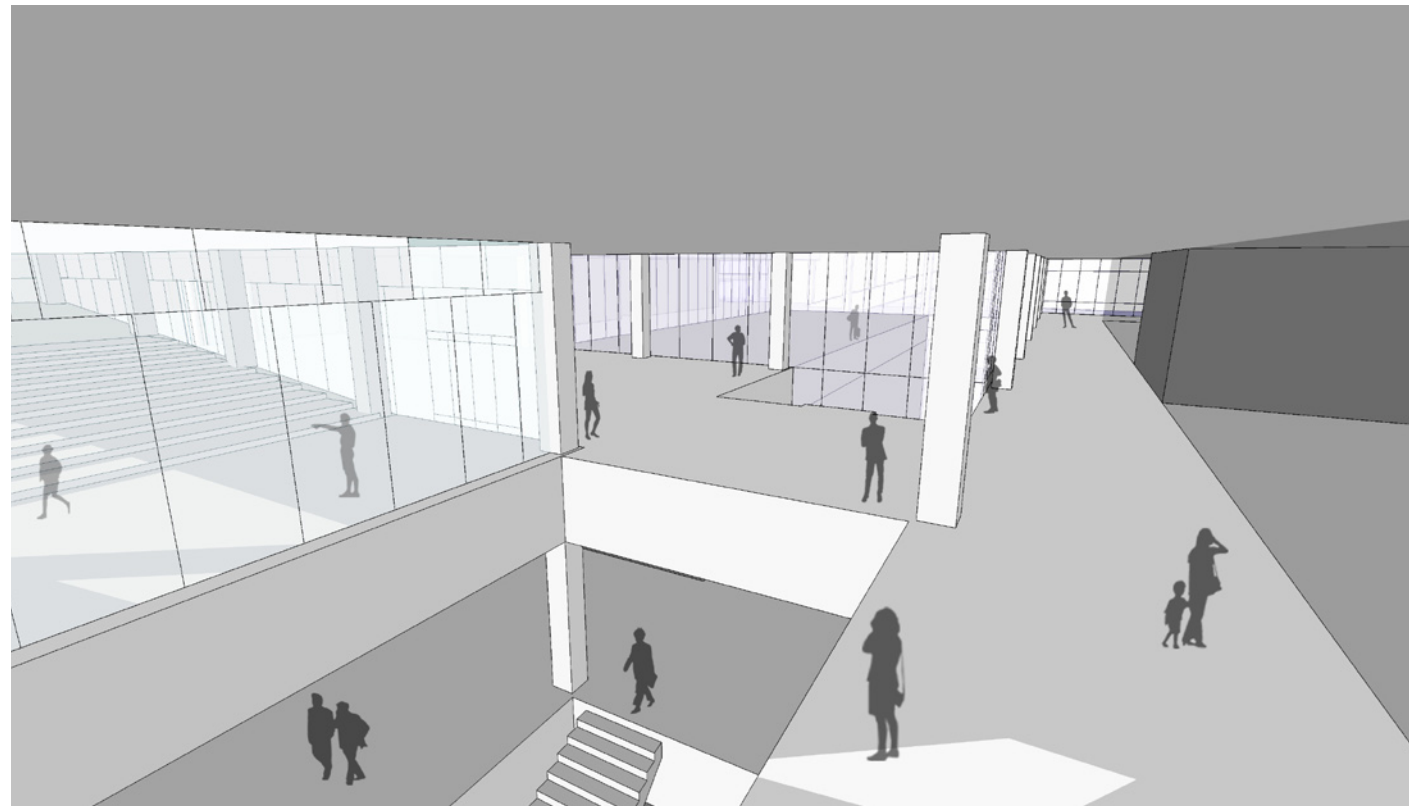
circulation / spatial experience



circulation / spatial experience

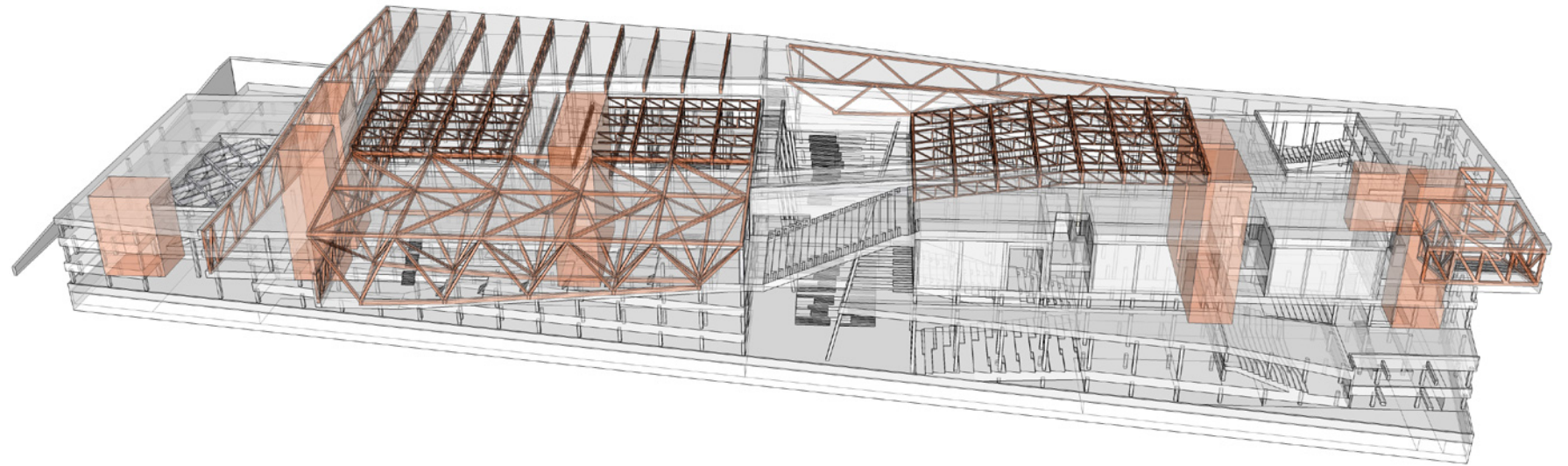


circulation / spatial experience

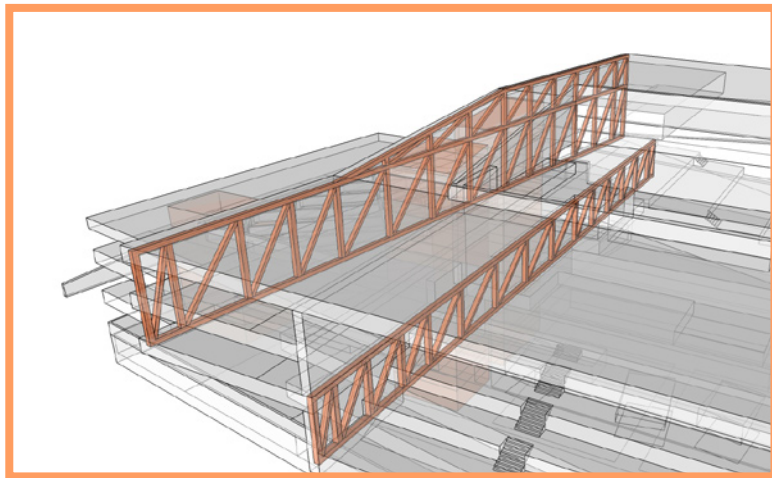
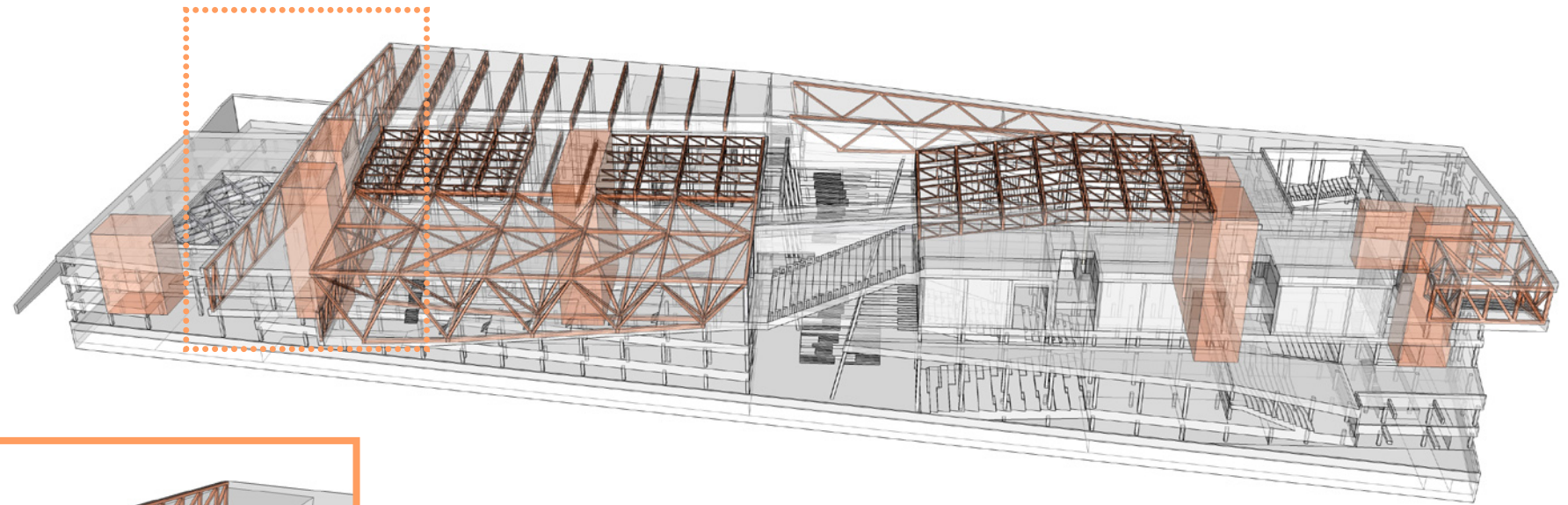


structure system

centralization of core
long spanned space
over-hanging mass

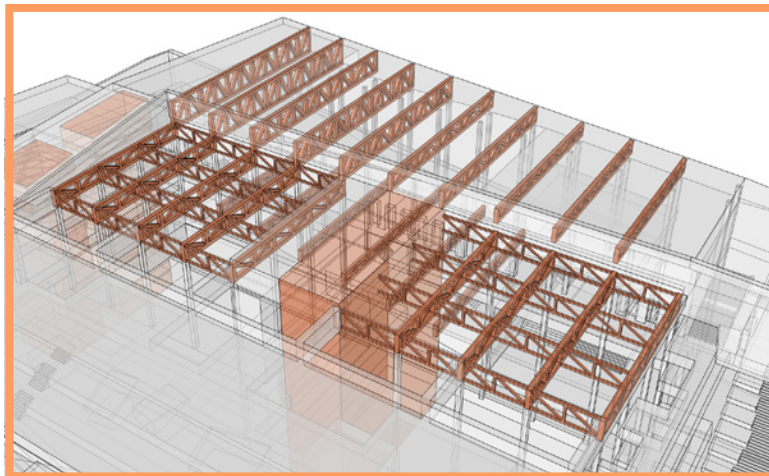
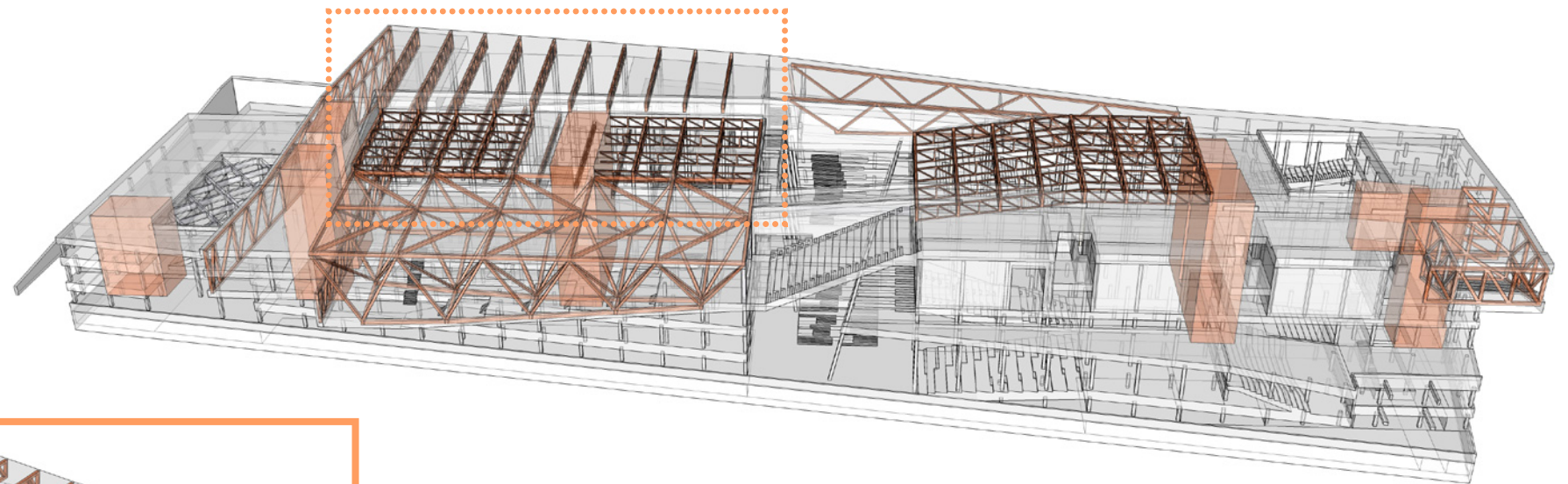


structure system



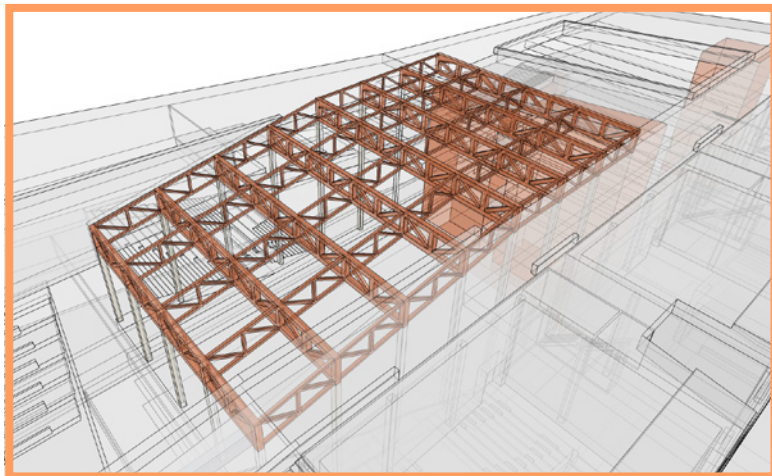
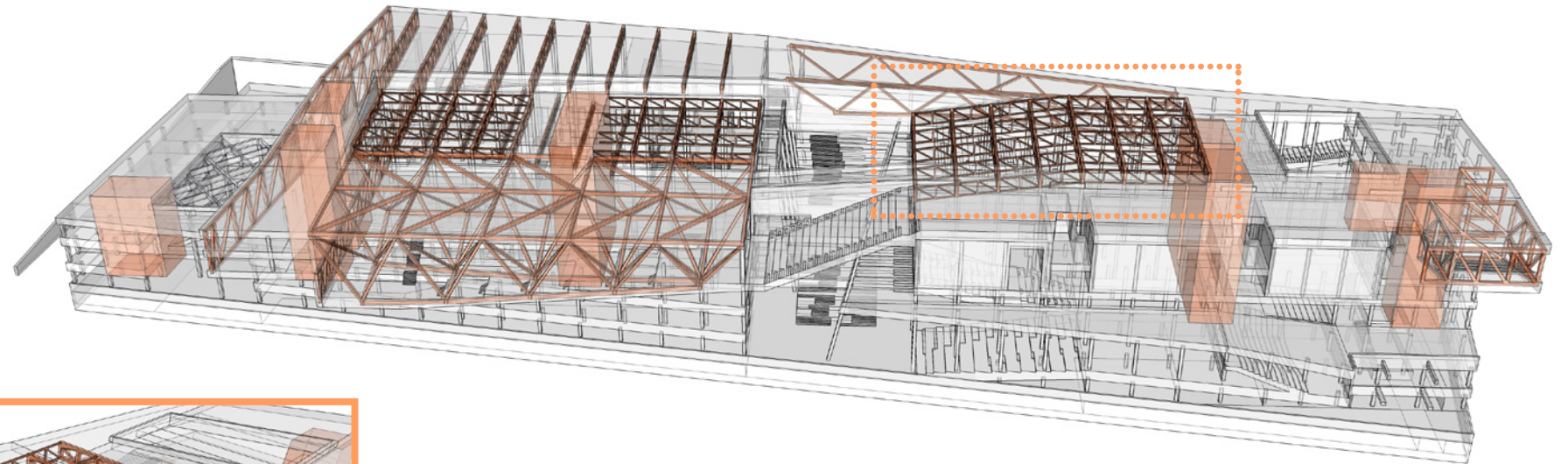
mega truss for over-hanging mass

structure system



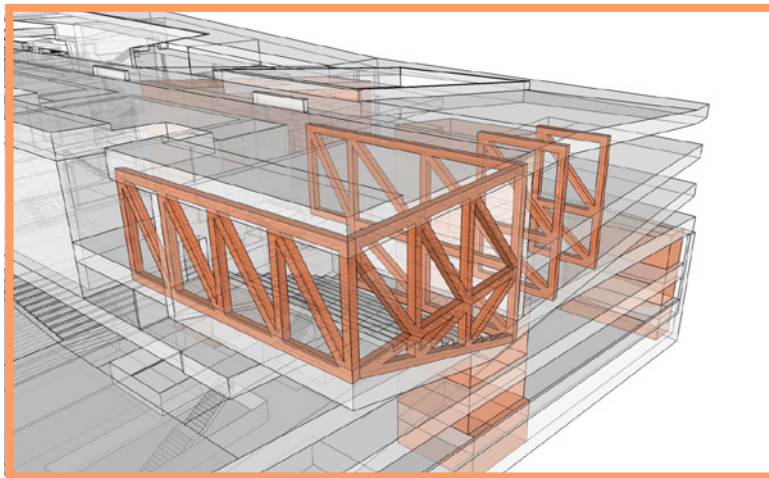
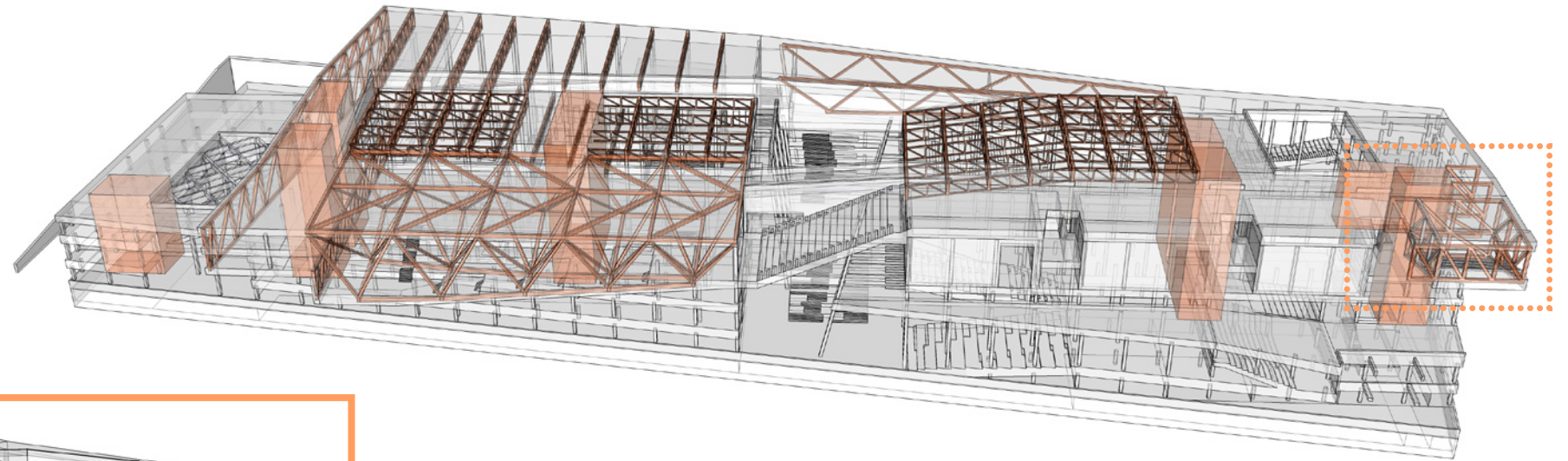
truss for studio / 1st exhibition

structure system



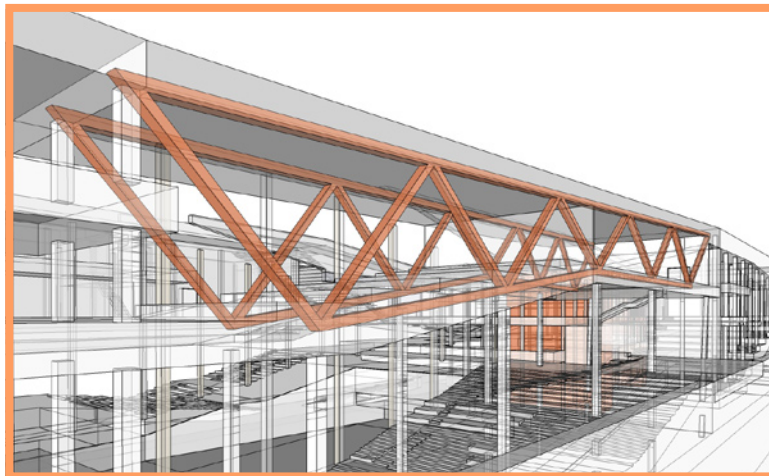
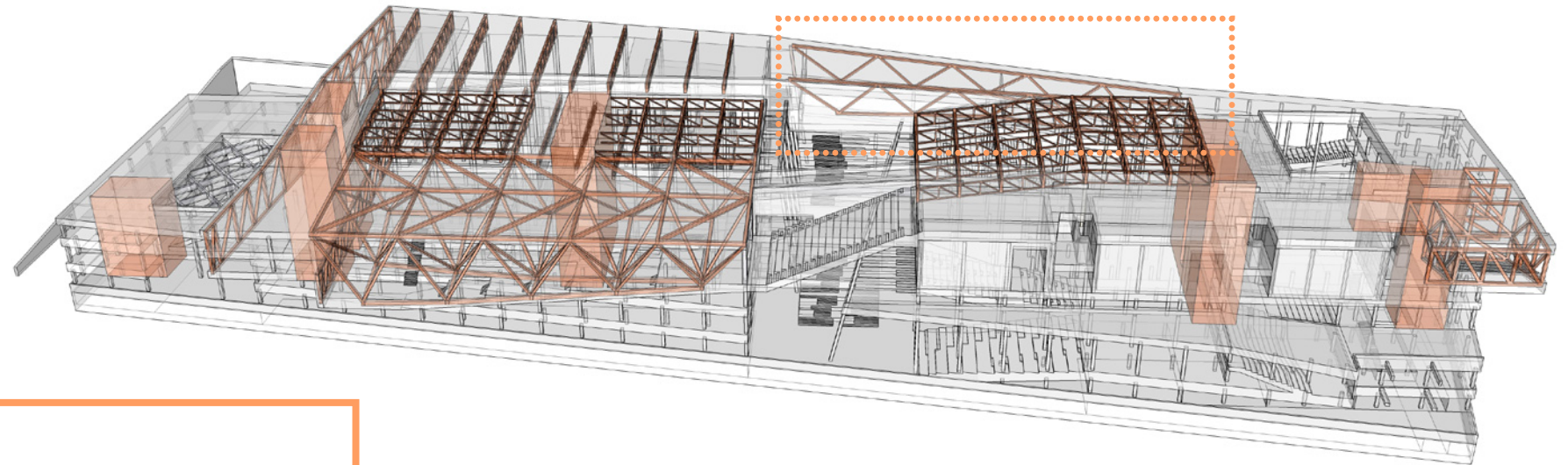
truss for auditorium

structure system



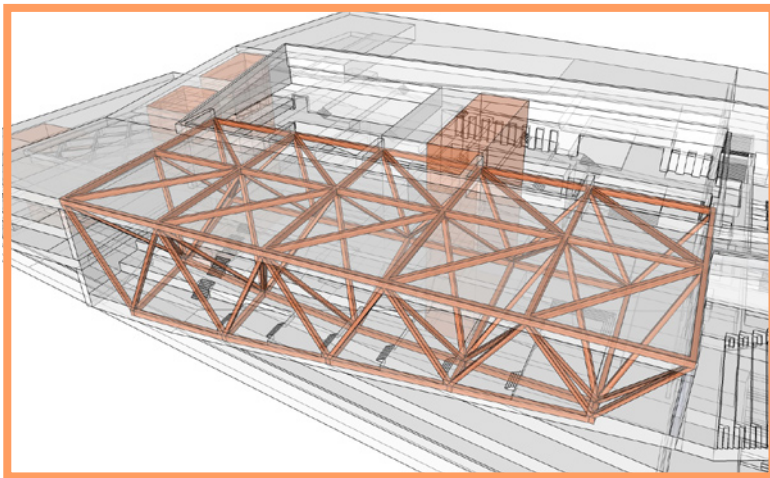
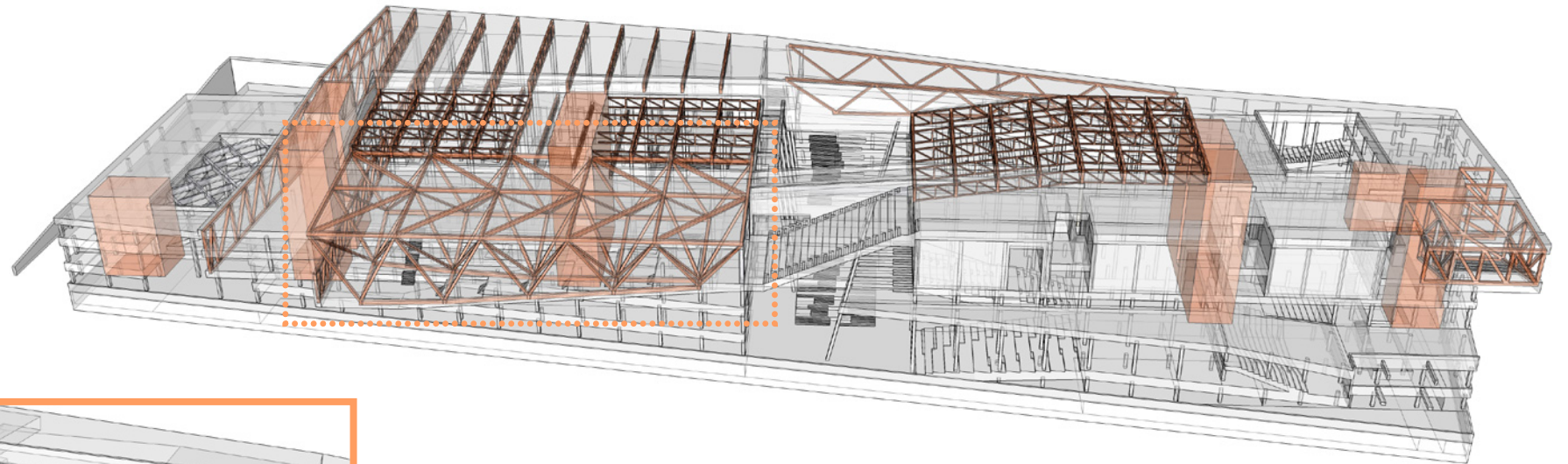
truss for preview rm.

structure system

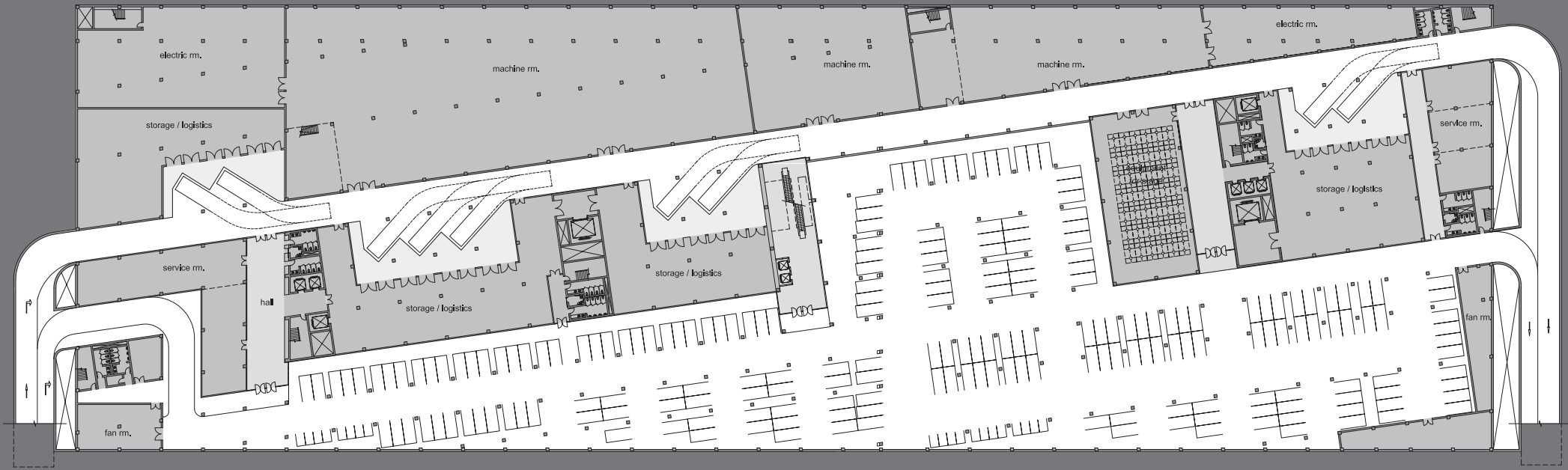


truss for restaurant / 2nd exhibition

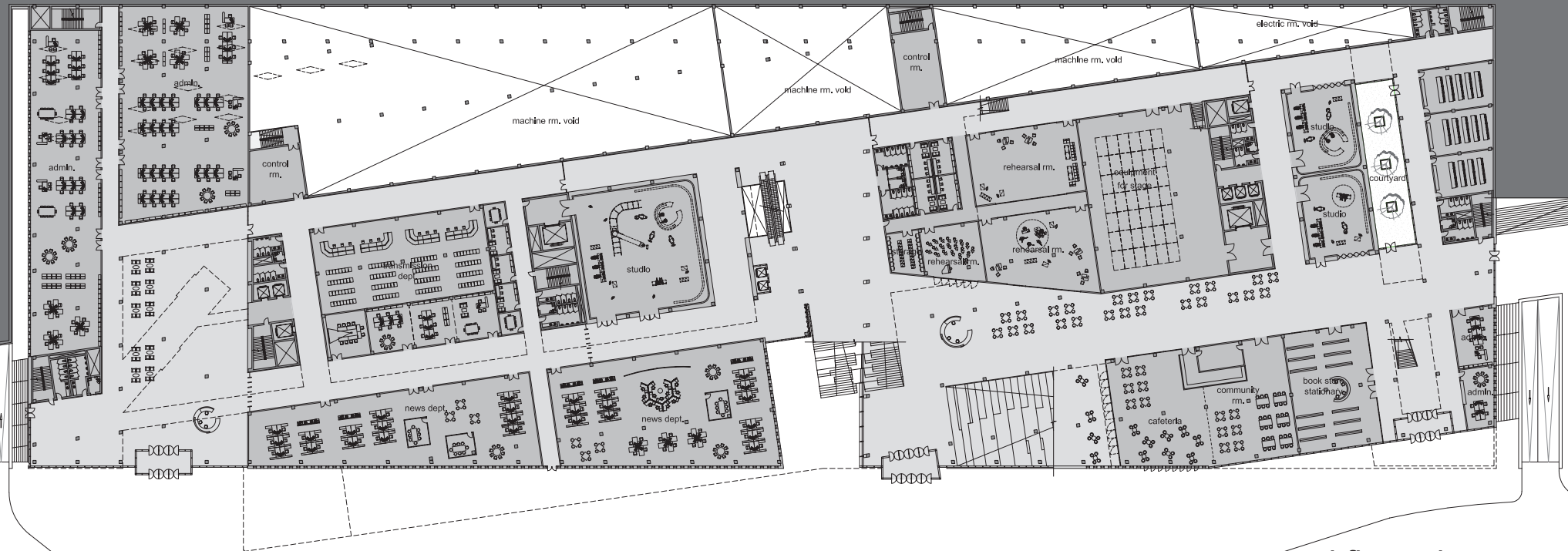
structure system



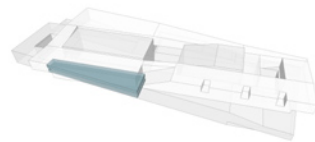
space frame for media library



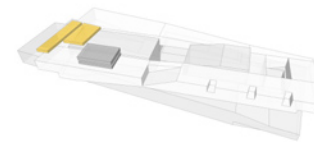
underground floor plan



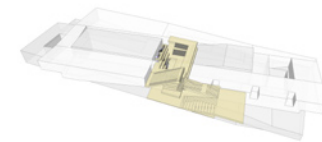
ground floor plan



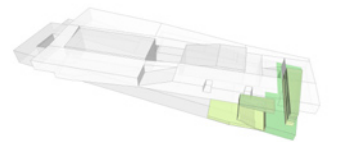
broadcasting com.
: news dept.



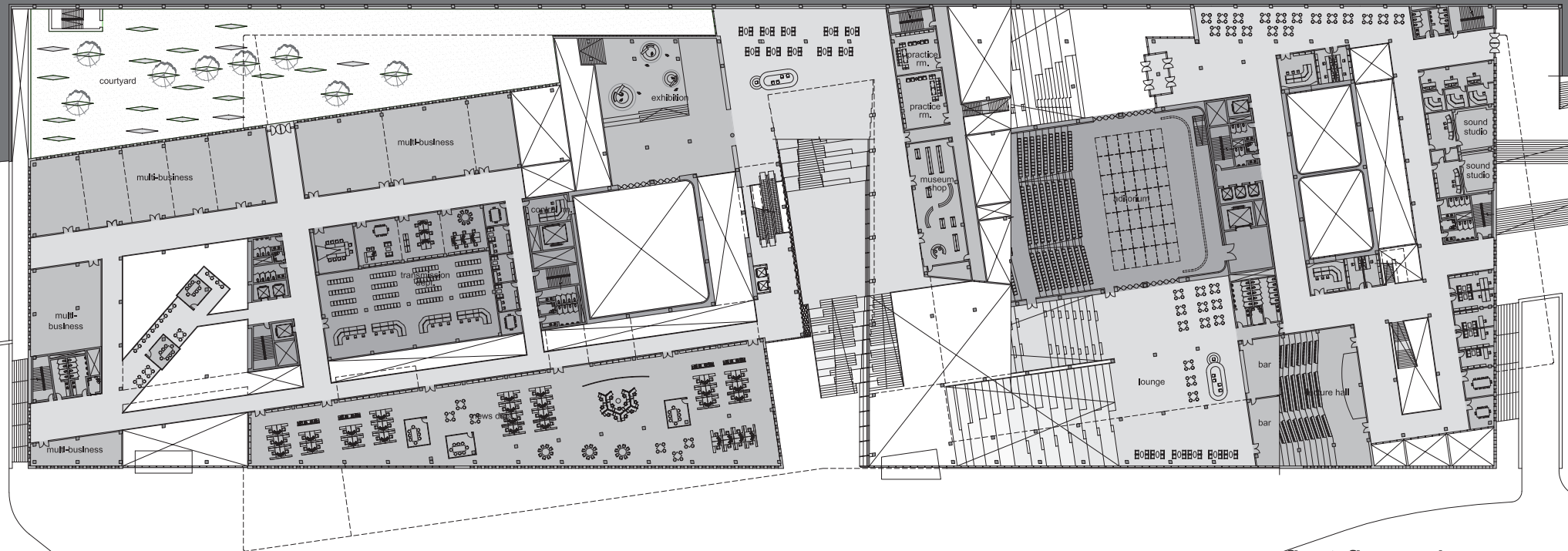
broadcasting com.
: admin. transmission



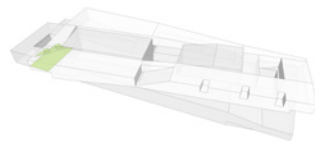
public space



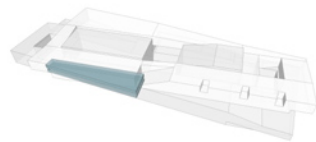
media school



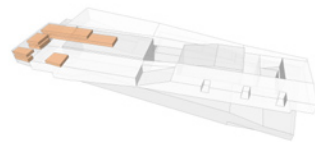
first floor plan



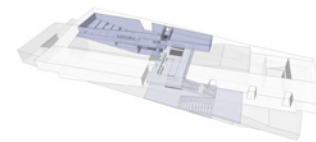
broadcasting com.
: meeting place



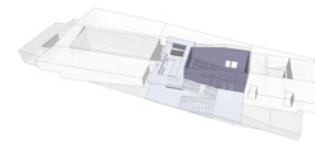
broadcasting com.
: news dept.



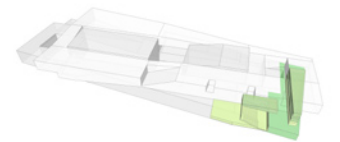
broadcasting com.
: multi business



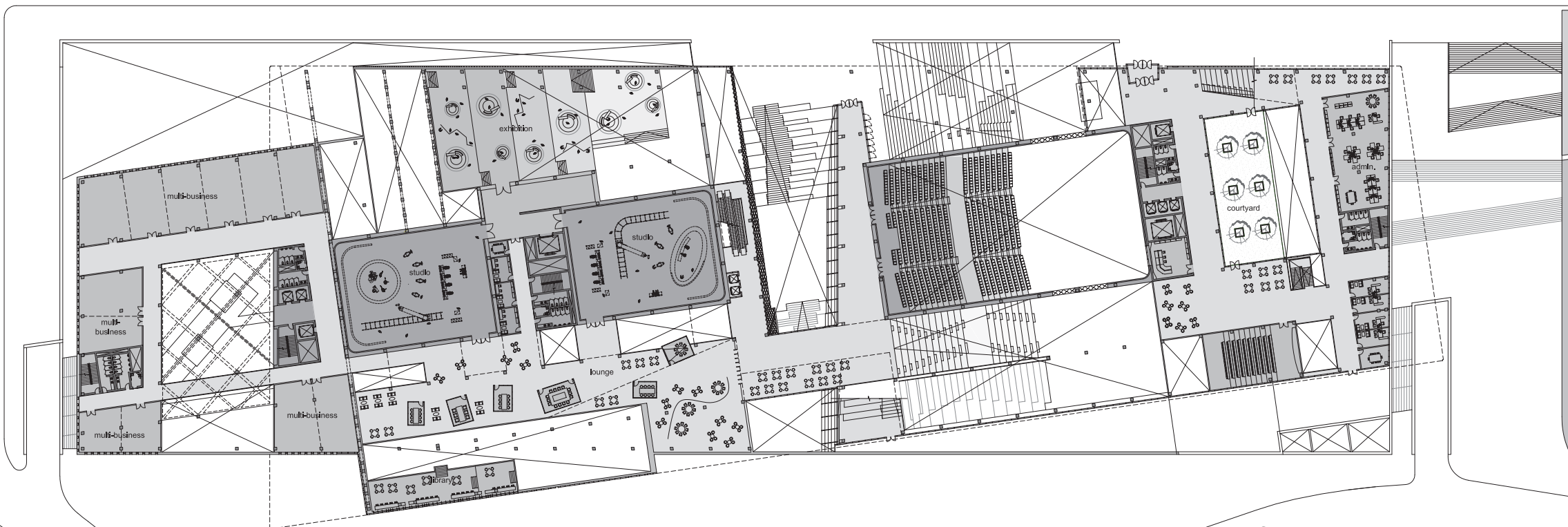
exhibition



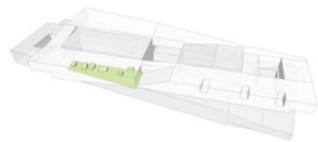
auditorium



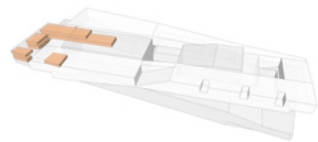
media school



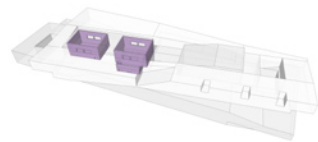
second floor plan



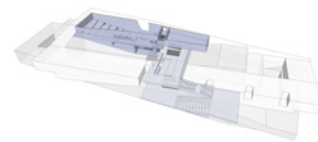
broadcasting com.
: meeting place



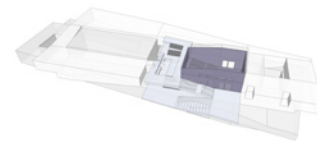
broadcasting com.
: multi business



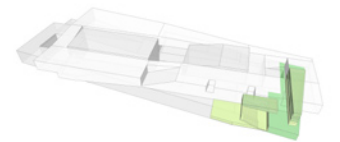
broadcasting com.
: studio



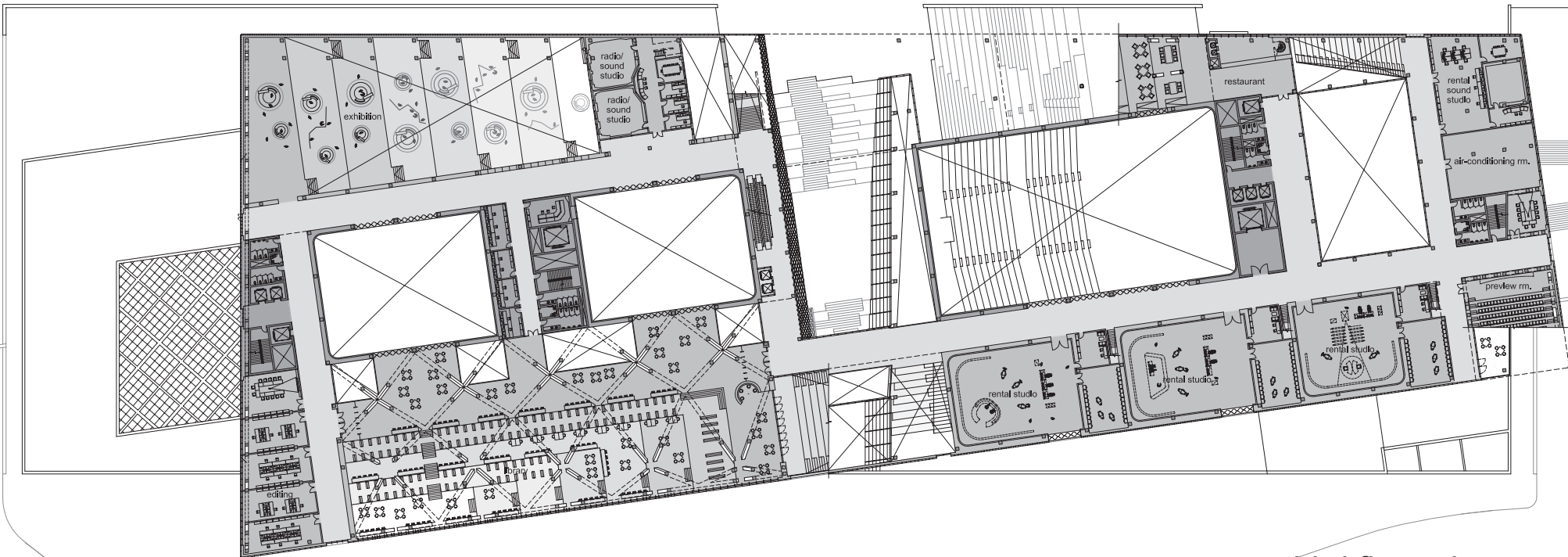
exhibition



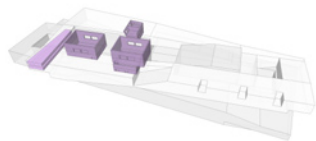
auditorium



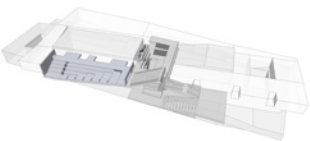
media school



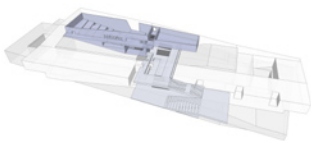
third floor plan



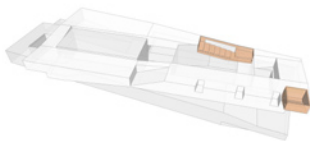
broadcasting com.
: studio



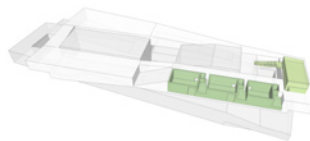
media library



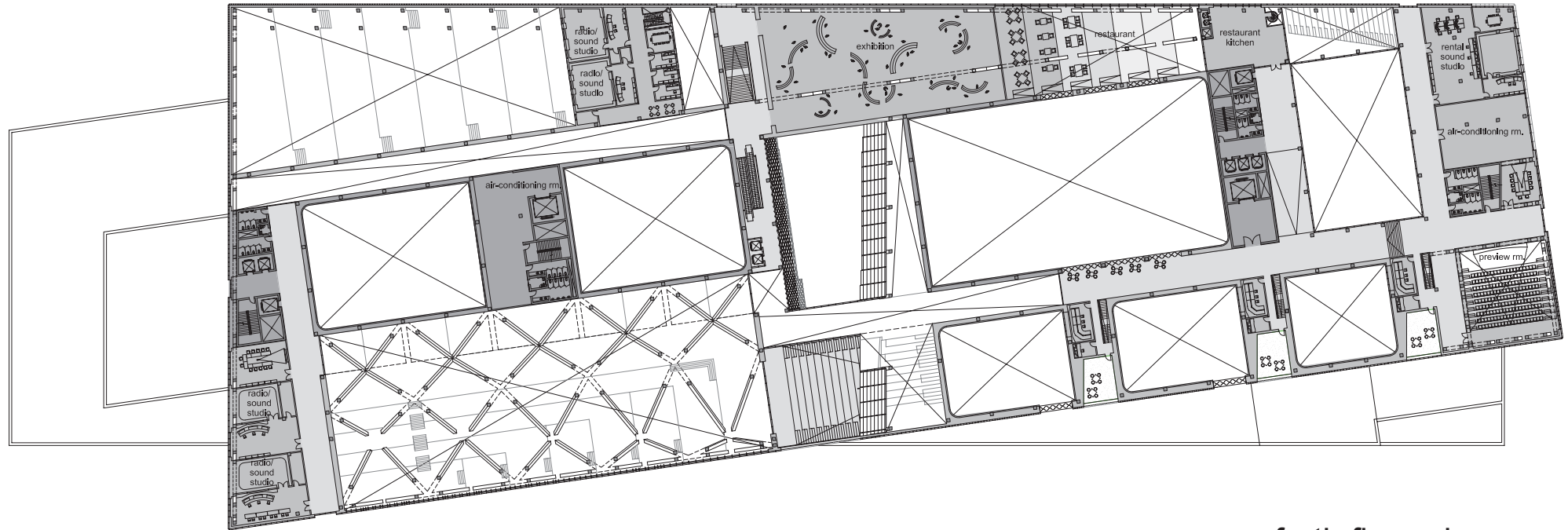
exhibition



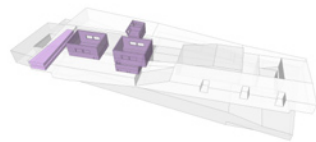
public space



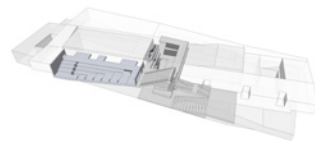
rental studio



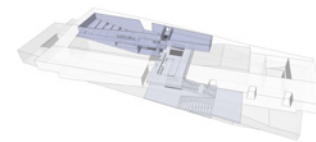
forth floor plan



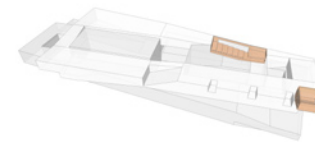
broadcasting com.
: studio



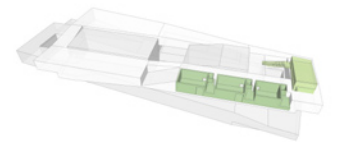
media library



exhibition



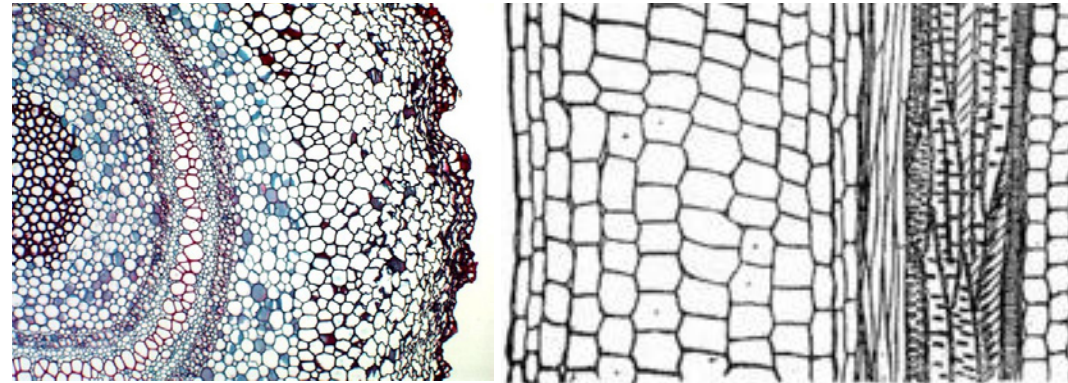
public space



rental studio

facade pattern & composition

- upper mass
- : rhizomatic / network
- : transparency (semi transparency)
- : contrast to black boxes



- lower mass
- : class / modern pattern
- : natural stone
- : contextual relationship

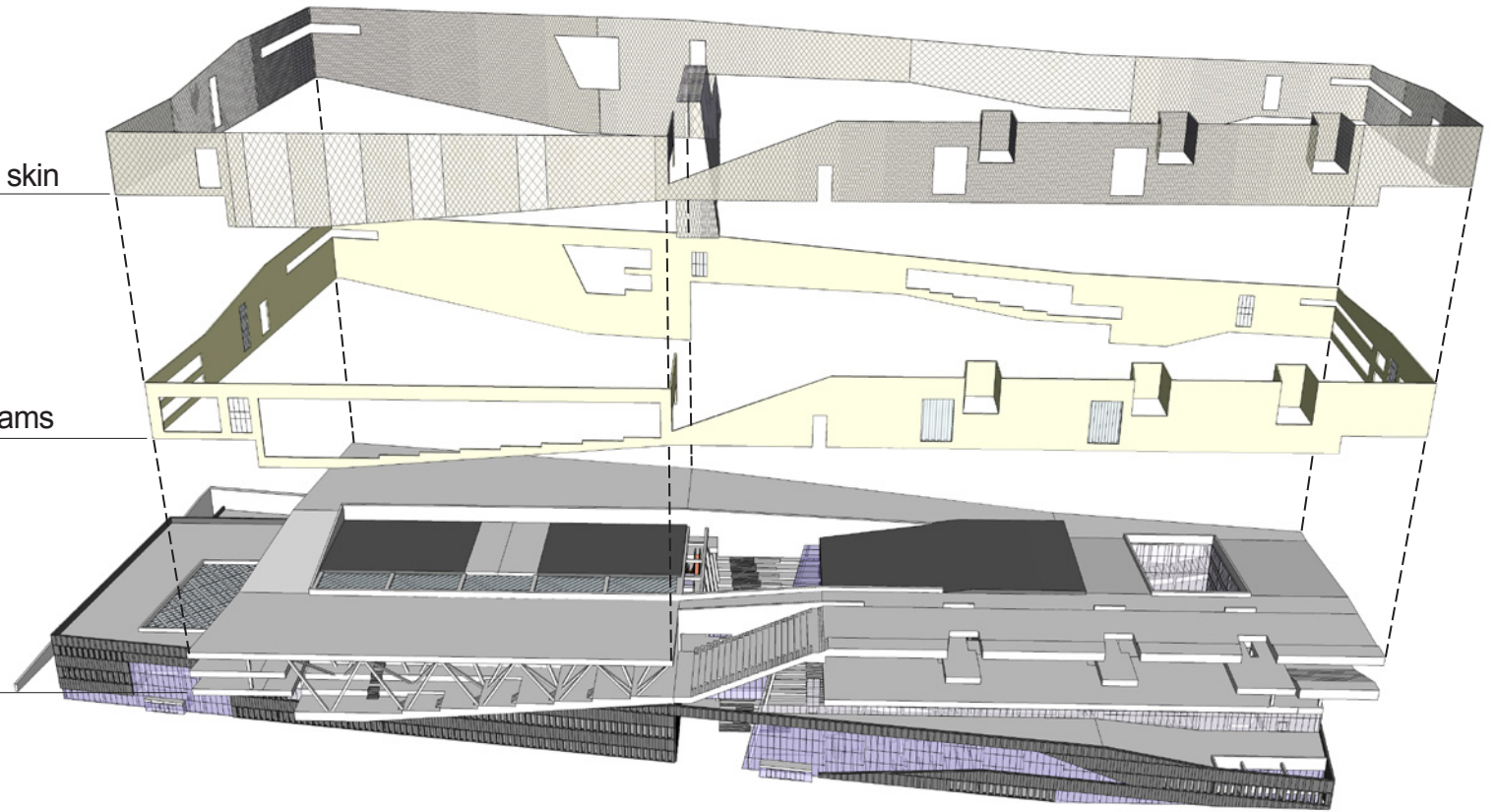


facade layering

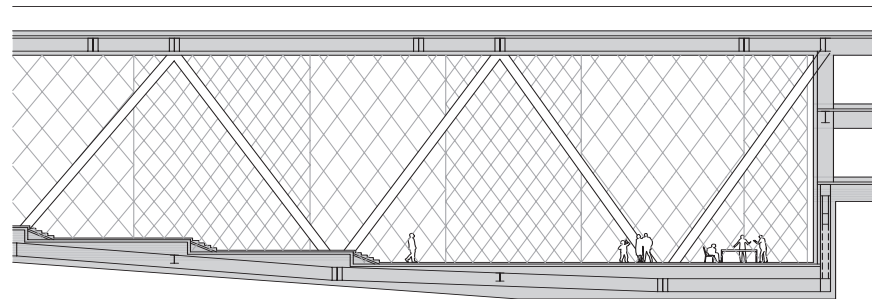
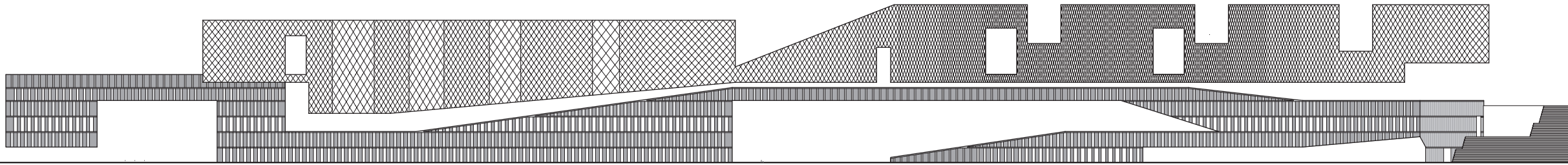
transparent / semi-transparent glass double skin

opening and closing
on precast conc. panel wall for inside programs

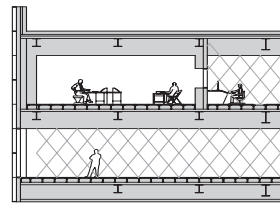
public program around studio



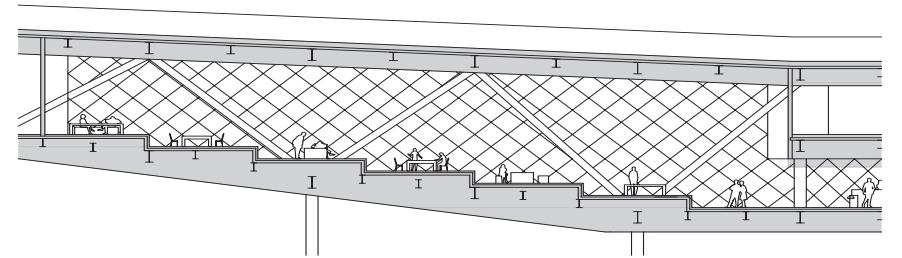
facade pattern



interior elevation in media library
: 900X1500 , 1350X2250

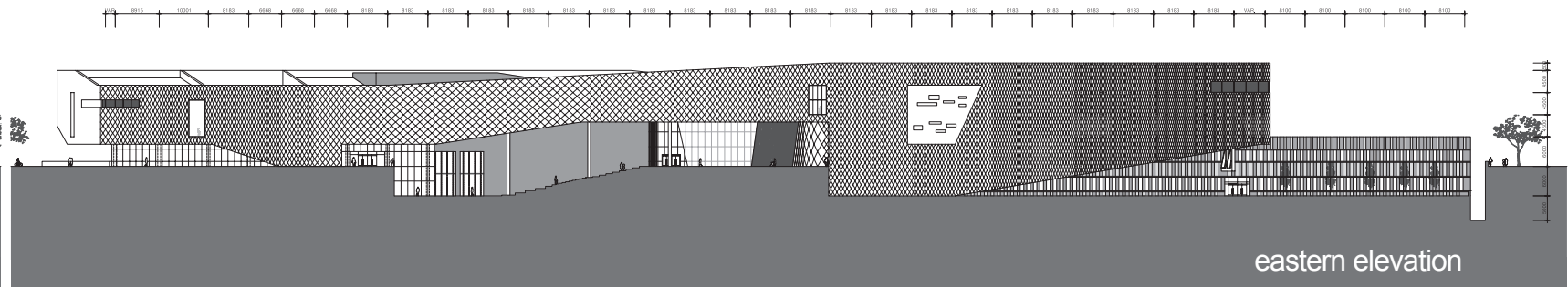
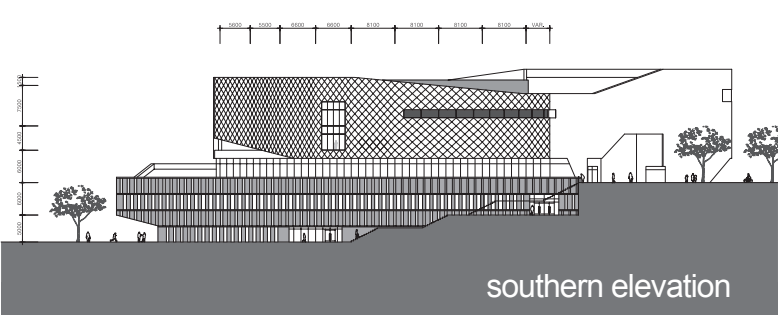
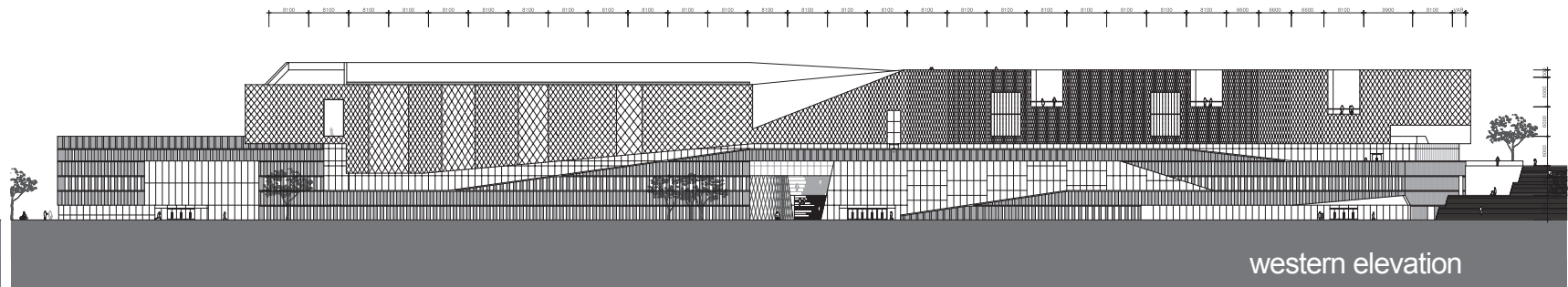
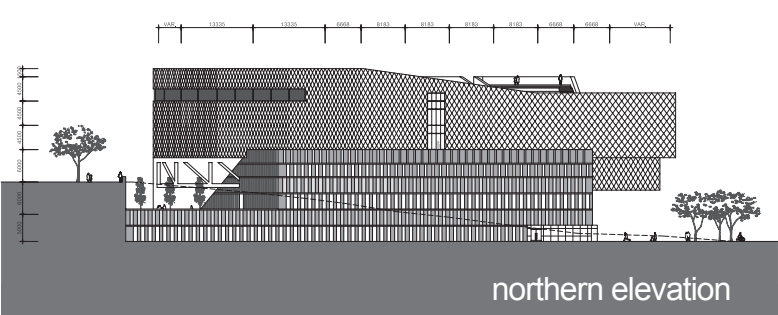


rental studio
: 1100X1500 , 1012.5X1500

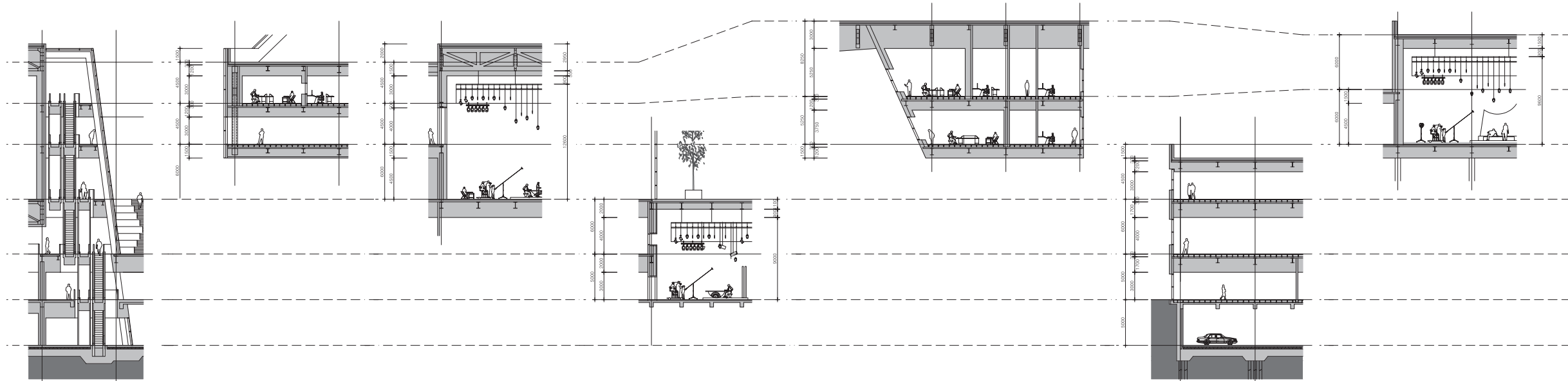


restaurant
: 1620X1500

facades



differentiation of floor height



vertical
collective
space

3rd/4th floor
sound studio
editing rm.
rental office

:access floor
/ floor duct

ceiling height
: 3000

2nd/3rd/4th floor
professional
studio

:ceiling duct
/ basic finish

ceiling height
: 13500

ground/1st floor
school
studio

:ceiling duct
/ basic finish

ceiling height
: 9900

ground/1st floor
sound/radio
studio

:access floor
/ floor duct

ceiling height
: 3750/5250

ground/1st/2nd floor
office area

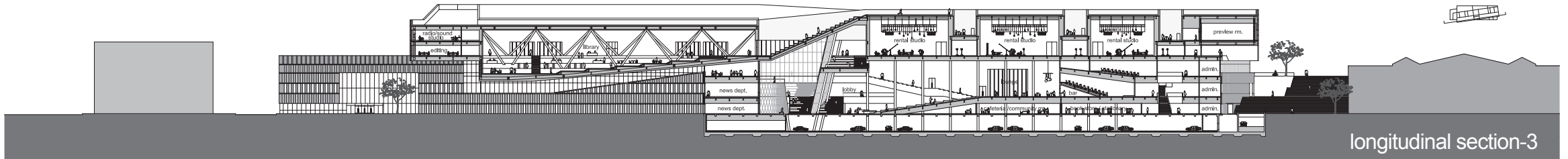
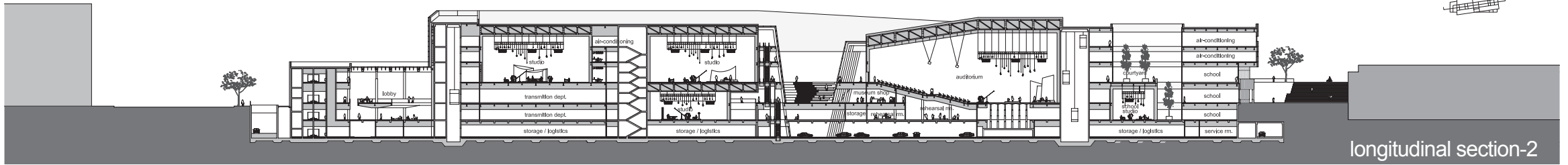
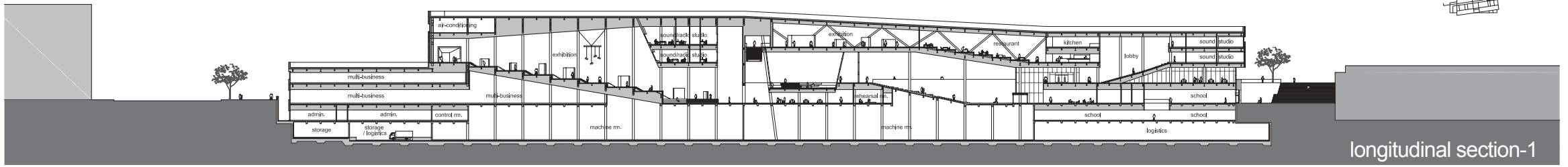
:access floor
/ floor duct

ceiling height
: 3000/4000

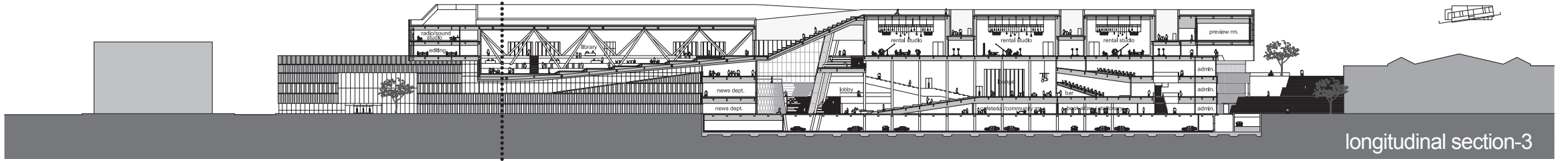
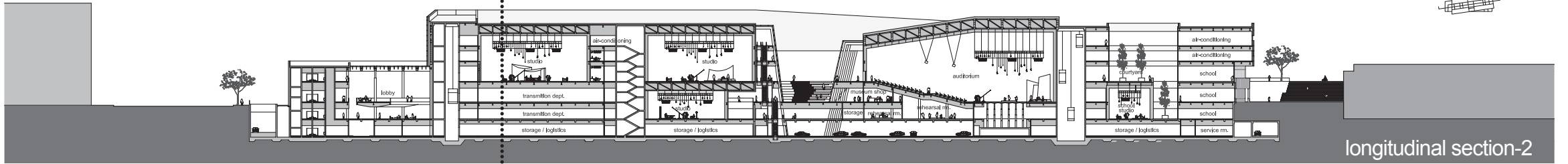
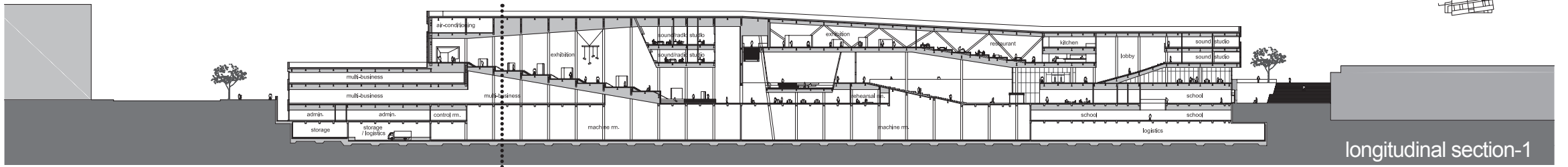
3rd/4th floor
rental
studio

:ceiling duct
/ basic finish

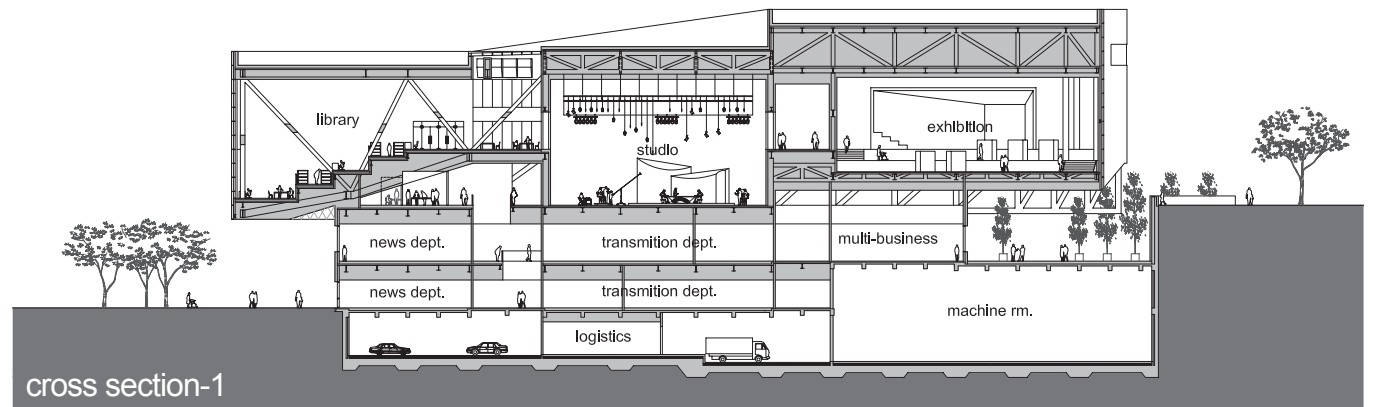
ceiling height
: 10500

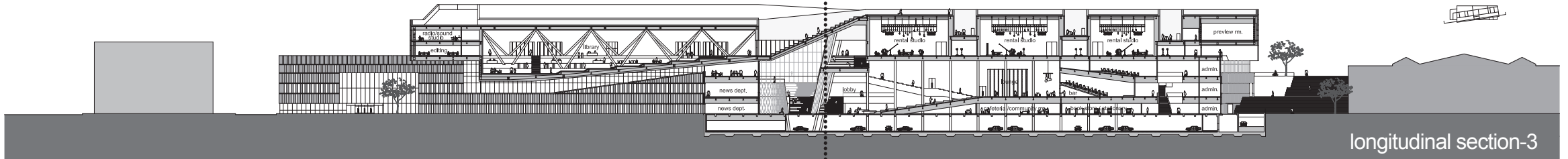
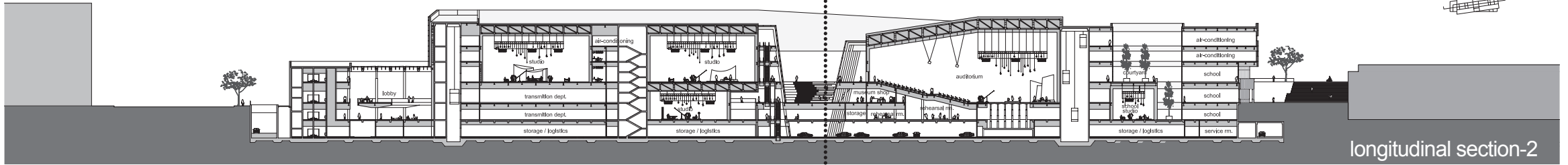
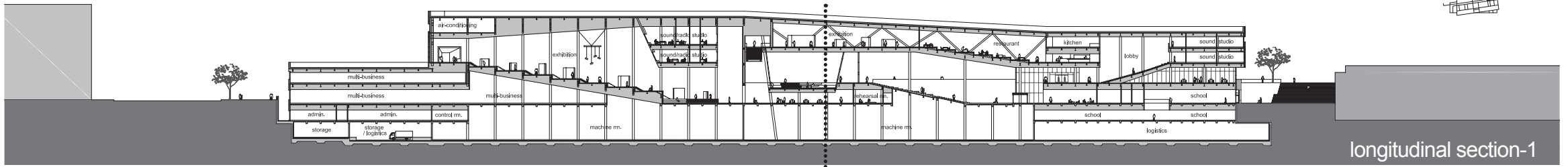


sections

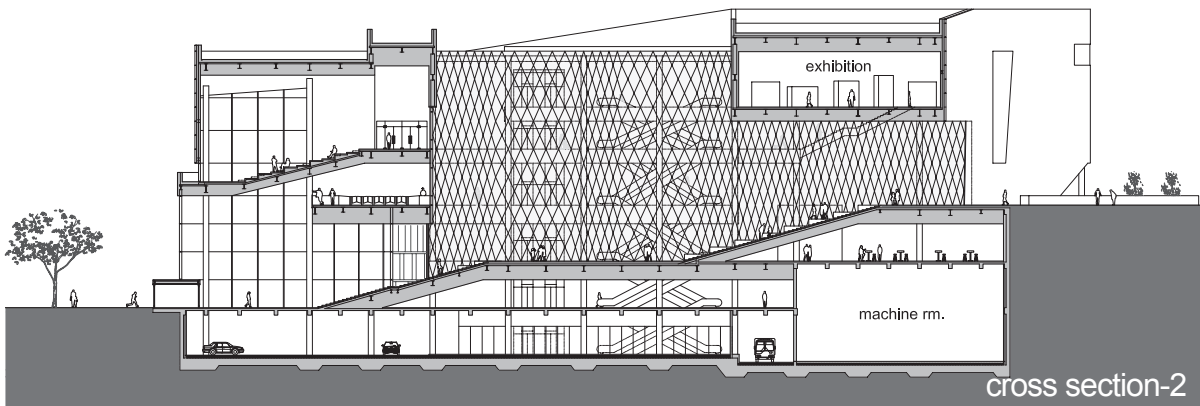


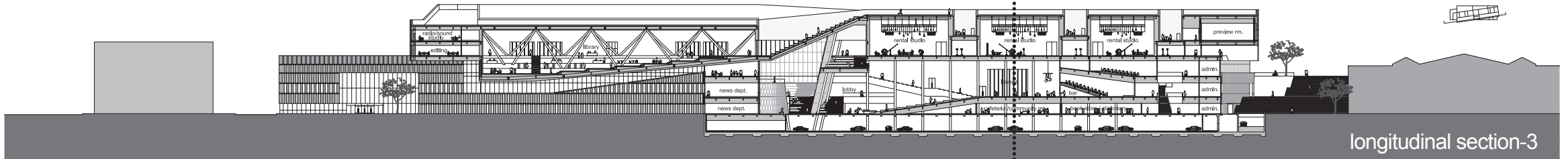
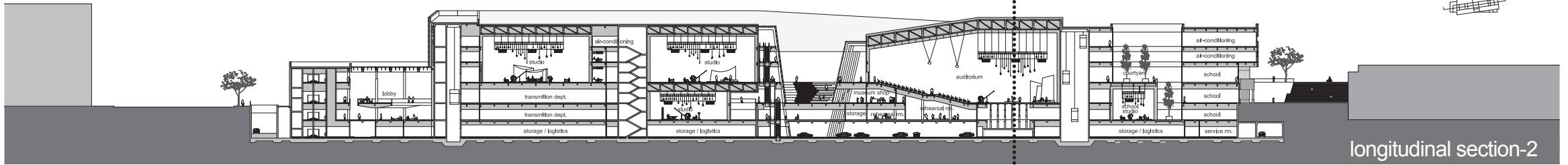
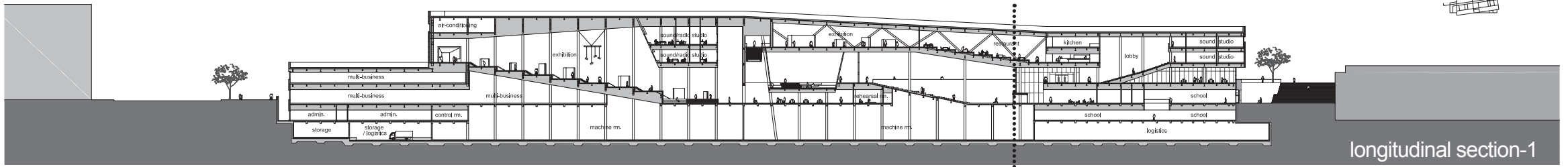
sections



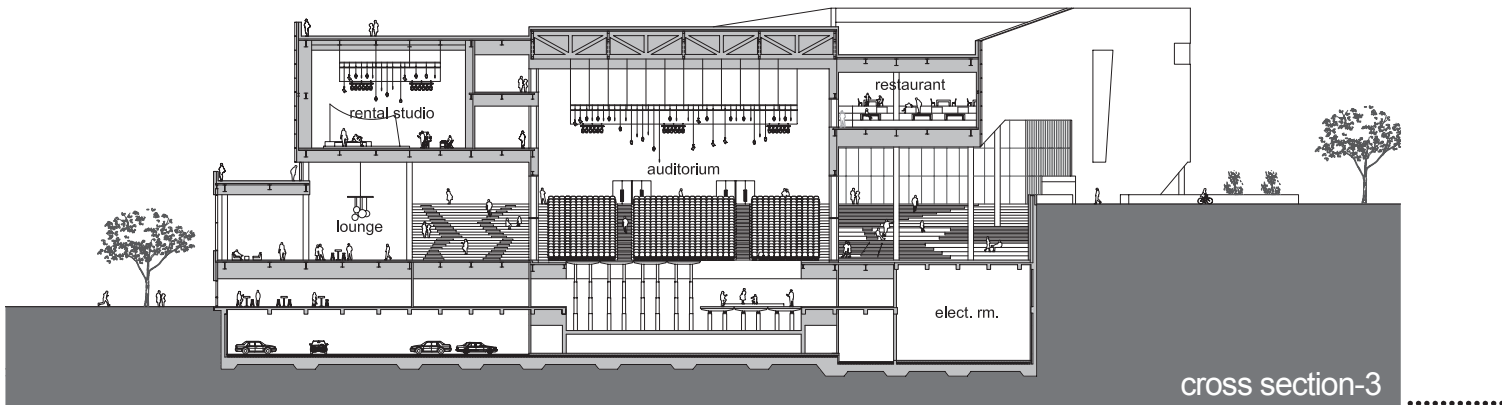


sections





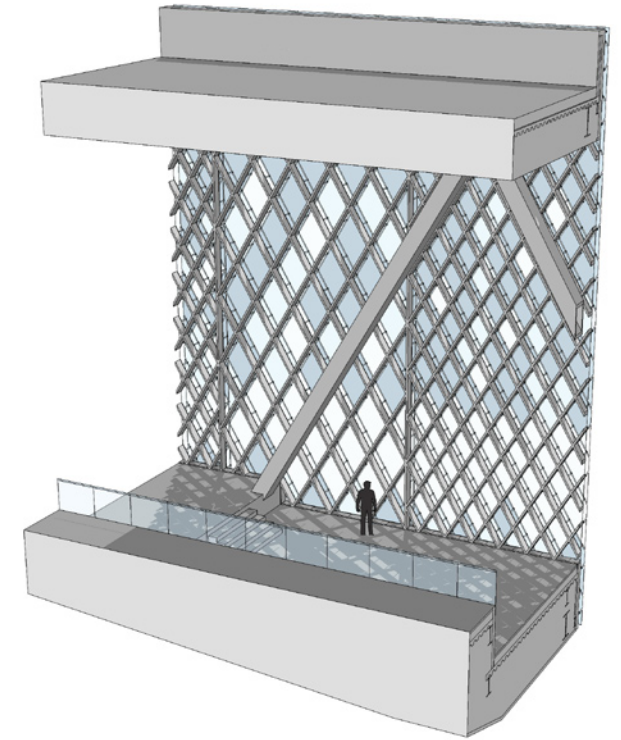
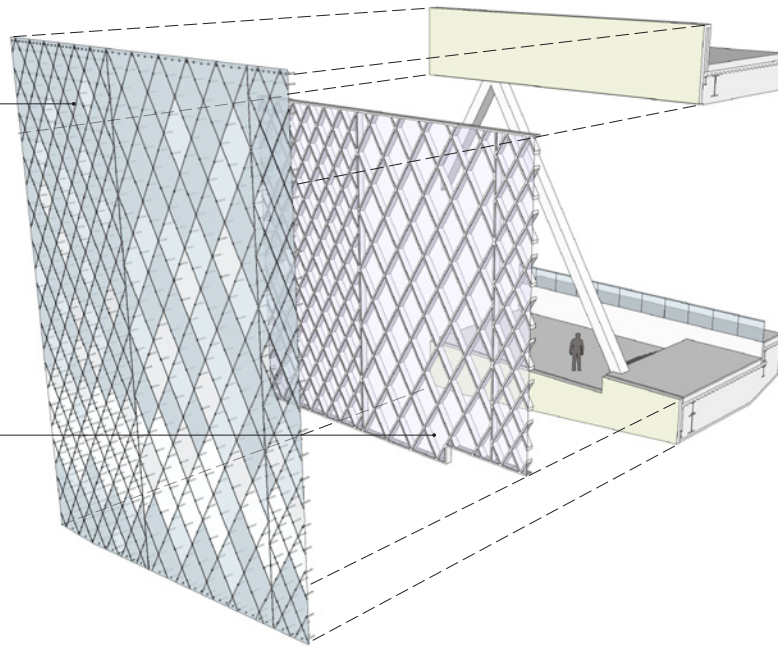
sections



detail / materiality

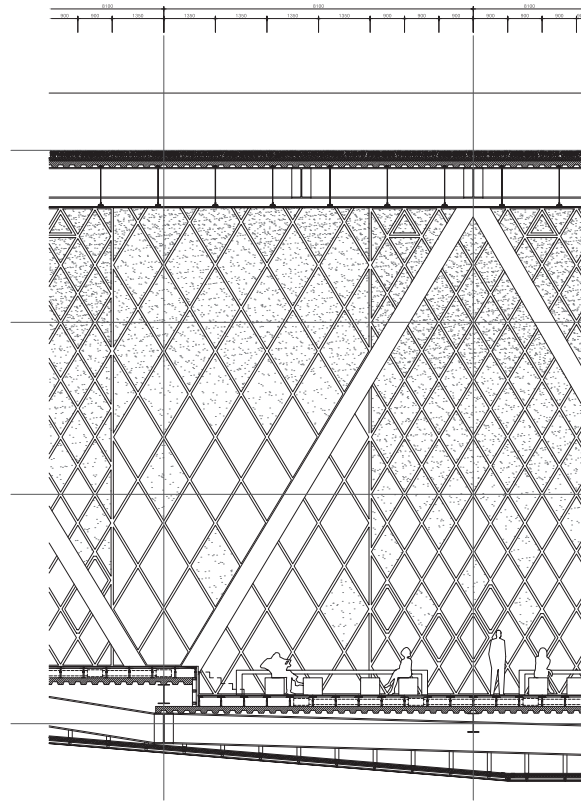
transparent / semi-transparent glass skin
by stainless steel pin

transparent glass curtain wall
by steel-reinforced bar

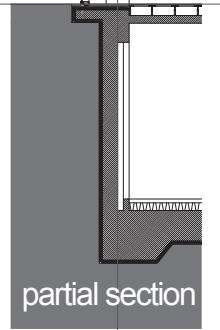
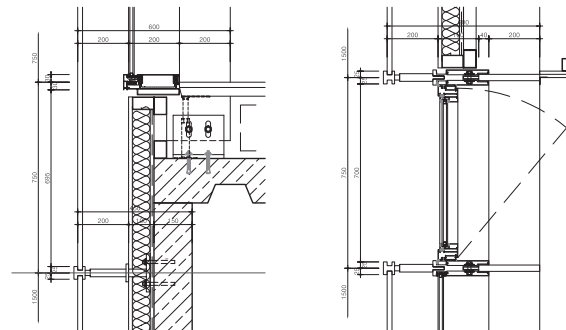
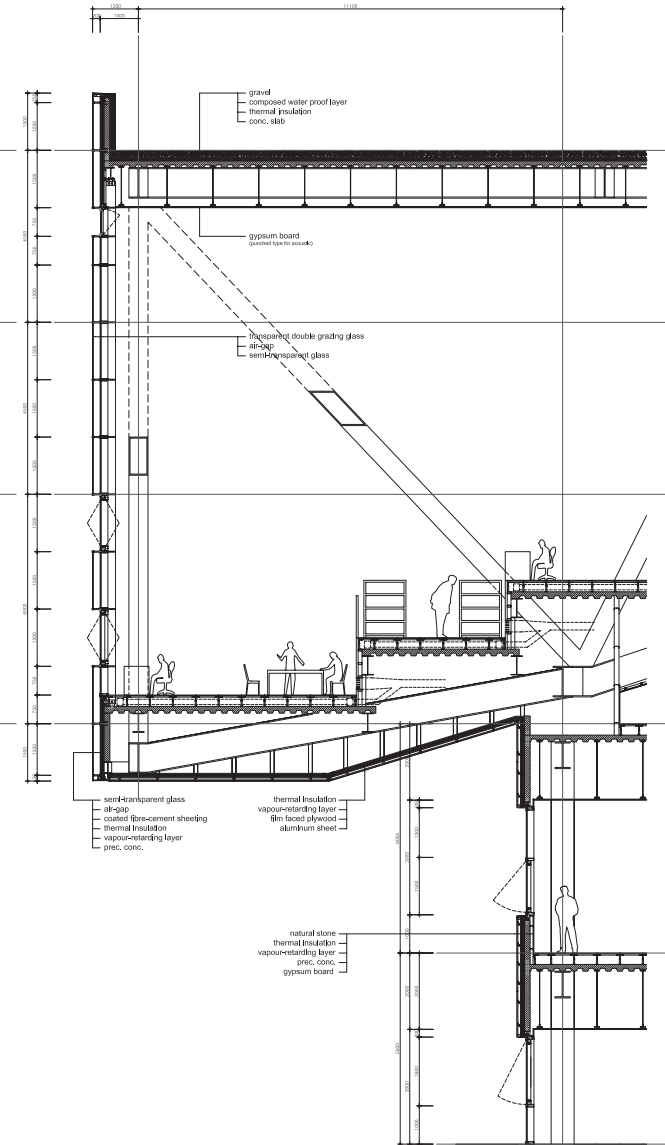


interior perspective of library

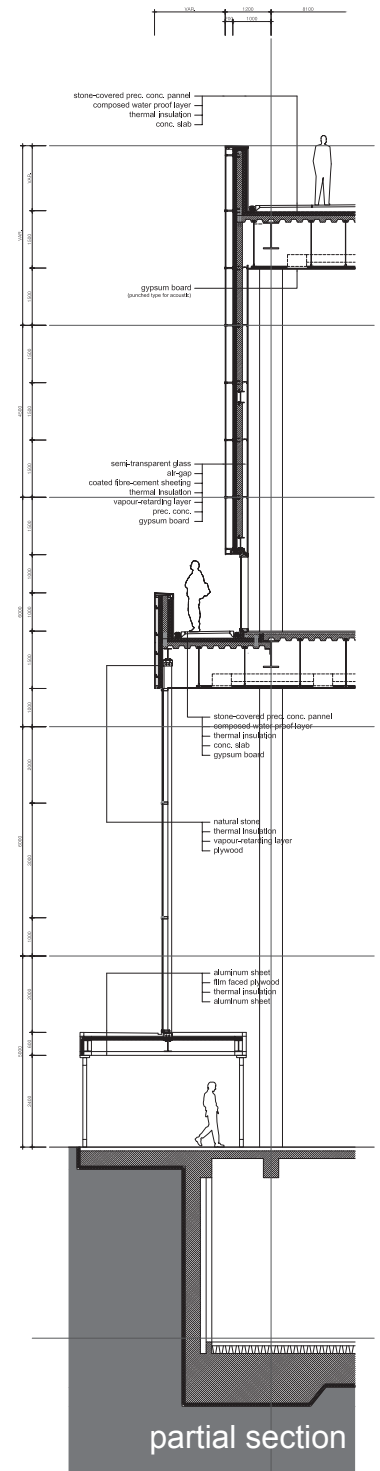
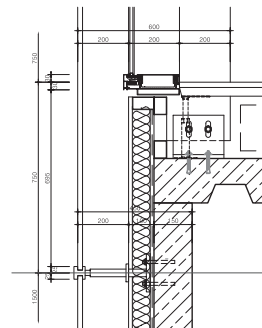
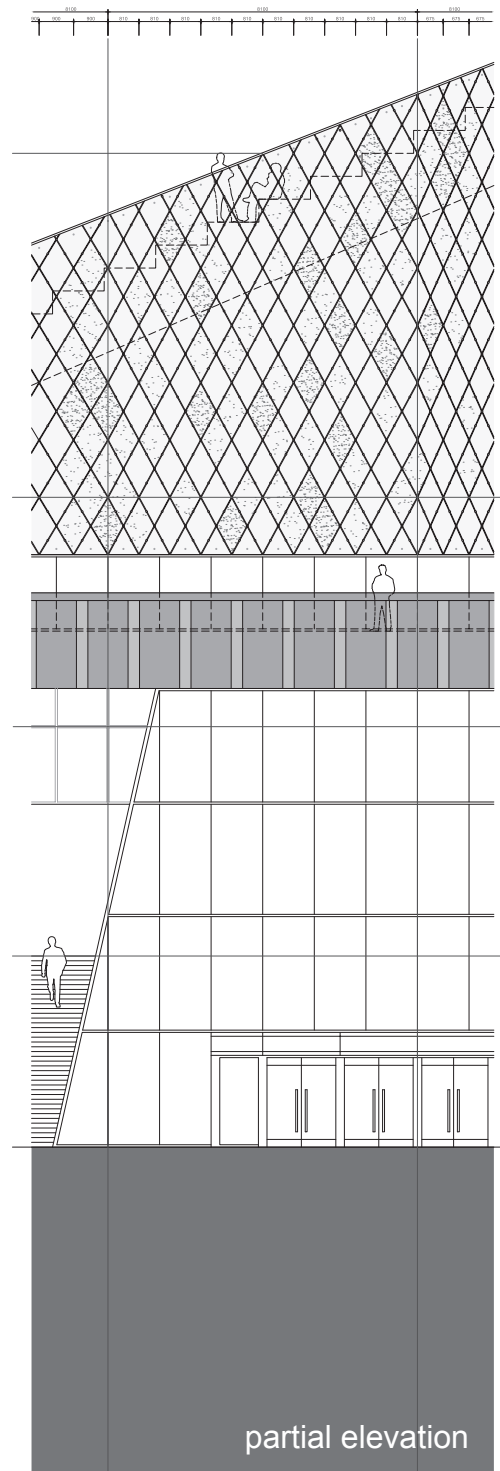
detail / materiality



partial interior facade



detail / materiality



partial elevation

partial section

Thanks

