

Quantitative measurement and visualization of biofilm O₂ consumption rates in membrane filtration systems

Vrouwenvelder, Hans; Prest, Emmanuelle; Kuhl, M; van Loosdrecht, Mark C.M.; Staal, Marc

DOI

[10.1016/j.proeng.2012.08.370](https://doi.org/10.1016/j.proeng.2012.08.370)

Publication date

2012

Document Version

Final published version

Published in

Procedia Engineering

Citation (APA)

Vrouwenvelder, J. S., Prest, E. I. E. C., Kuhl, M., Van Loosdrecht, M. C. M., & Staal, M. (2012). Quantitative measurement and visualization of biofilm O₂ consumption rates in membrane filtration systems. *Procedia Engineering*, 44, 233-234. DOI: 10.1016/j.proeng.2012.08.370

Important note

To cite this publication, please use the final published version (if applicable).
Please check the document version above.

Copyright

Other than for strictly personal use, it is not permitted to download, forward or distribute the text or part of it, without the consent of the author(s) and/or copyright holder(s), unless the work is under an open content license such as Creative Commons.

Takedown policy

Please contact us and provide details if you believe this document breaches copyrights.
We will remove access to the work immediately and investigate your claim.

Euromembrane Conference 2012
[OB20]
**Quantitative measurement and visualization of biofilm O₂ consumption rates
inmembrane filtration systems**

 J.S. Vrouwenvelder^{*1,2}, E.I.E.C. Prest^{1,3}, M. Kuhl^{4,5}, M.C.M. van Loosdrecht¹, M. Staal^{2,4}
¹*Delft University of Technology, The Netherlands*, ²*KAUST, Saudi Arabia*, ³*Wetsus, The Netherlands*, ⁴*University of Copenhagen, Denmark*, ⁵*University of Technology Sydney, Australia*

There is a strong need for techniques enabling direct assessment of biological activity of biofouling in membrane filtration systems. Here we present a new quantitative and non-destructive method for mapping O₂ dynamics in biofilms during biofouling studies in membrane fouling simulators (MFS). Transparent planar O₂ optodes in combination with a luminescence lifetime imaging system were used to map the two-dimensional distribution of O₂ concentrations and consumption rates inside the MFS. The O₂ distribution was indicative for biofilm development. Biofilm activity was characterized by imaging of O₂ consumption rates, where low and high activity areas could be clearly distinguished. The spatial development of O₂ consumption rates, flow channels and stagnant areas could be determined (Figures 1 and 2). This can be used for studies on concentration polarization, i.e. salt accumulation at the membrane surface resulting in increased salt passage and reduced water flux. The new optode-based O₂ imaging technique applied to MFS allows non-destructive and spatially resolved quantitative biological activity measurements for on-site biofouling diagnosis and laboratory studies. The following set of complementary tools is now available to study development and control of biofouling in membrane systems: (i) MFS, (ii) sensitive pressure drop measurement, (iii) magnetic resonance imaging, (iv) numerical modelling, and (v) biological activity measurement based on O₂ imaging methodology.

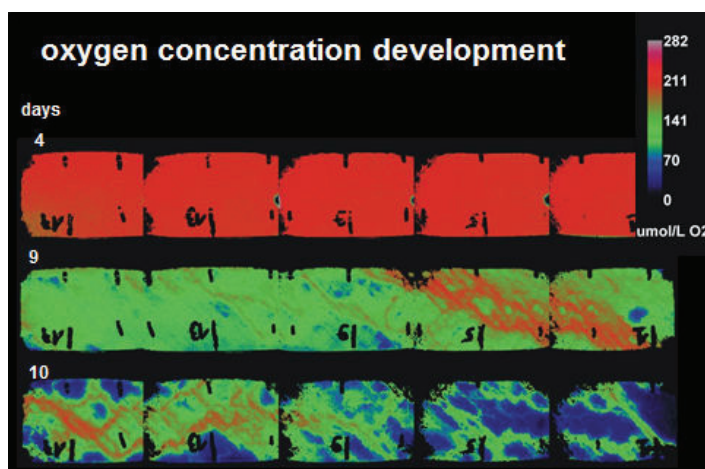


Figure 1: Spatio-temporal distribution of O₂ concentration (μmol O₂ / L) imaged over the monitor length at the optode surface, i.e. the base of the fouling layer. The figure shows the development of low O₂ concentration regions and flow channelling over time. The flow direction is from left to right.

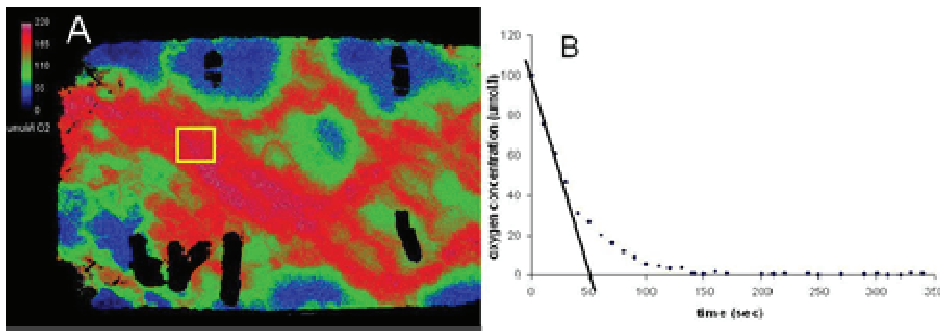


Figure 2. Procedure to determine O_2 consumption rates in the MFS. Oxygen images were taken every 10 s after the flow was stopped. An area of interest (AOI) was selected on the initial oxygen image (A) and the O_2 depletion over time was determined for the AOI (B). The O_2 consumption rate for particular AOIs was calculated from the initial slope of the O_2 depletion curve.

Keywords: biofouling, non-destructive biofouling diagnosis, biological activity measurement, concentration polarization