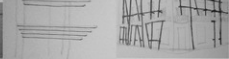
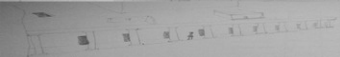
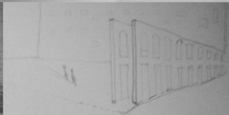
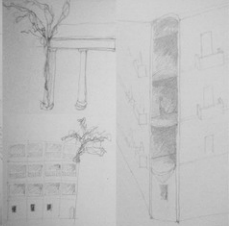
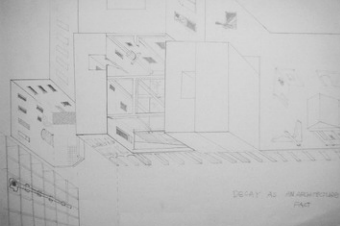


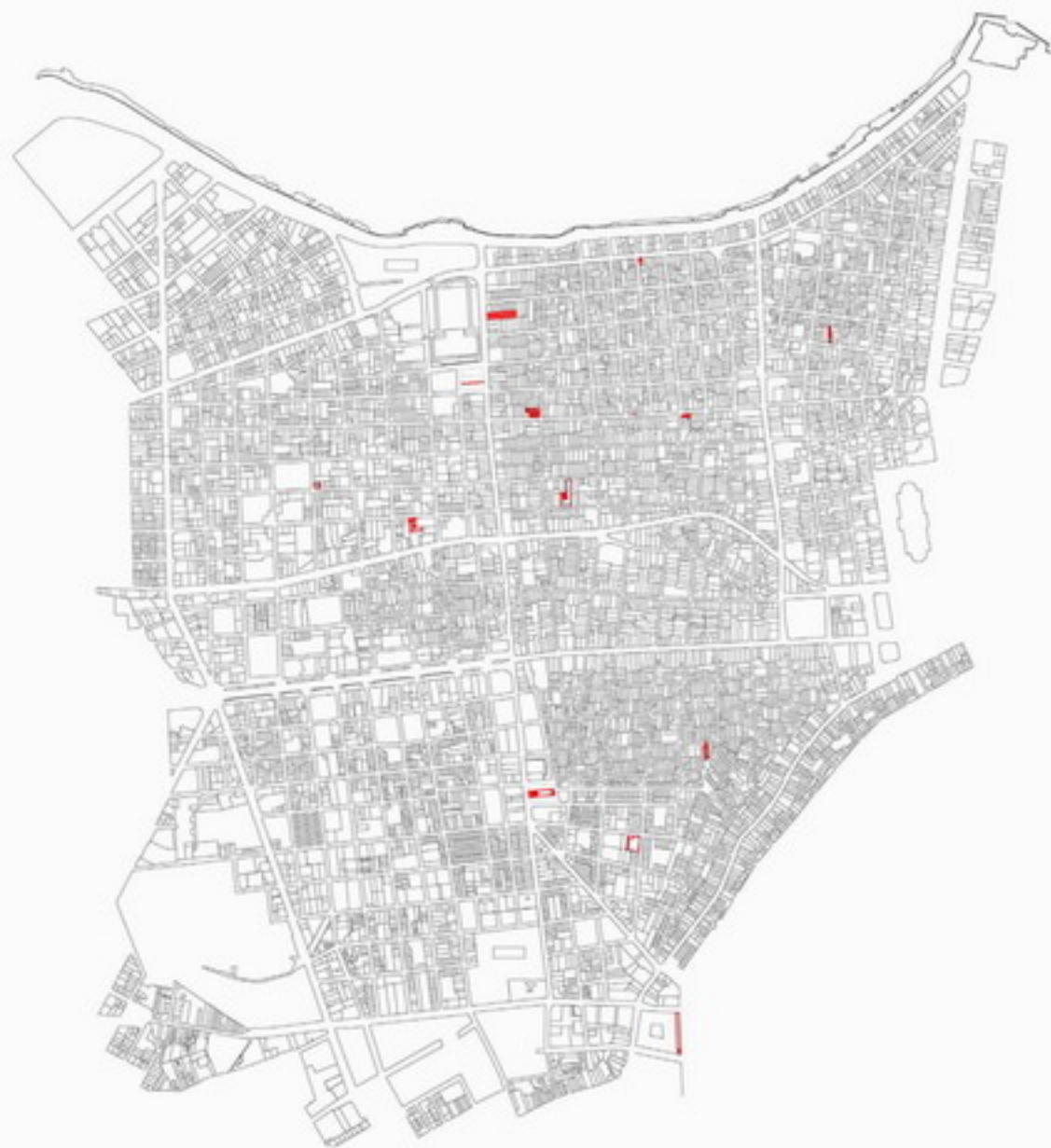
# MICRO THEATRE

Yajun Chen  
2009, 10, 27



# MICRO THEATRE

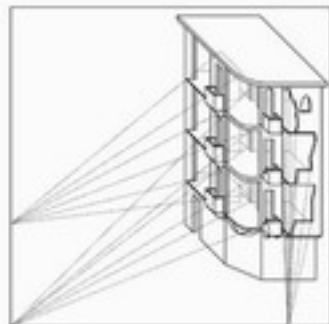
Yajun Chen  
2009, 10, 27



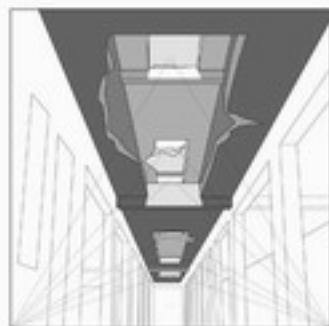
## vision



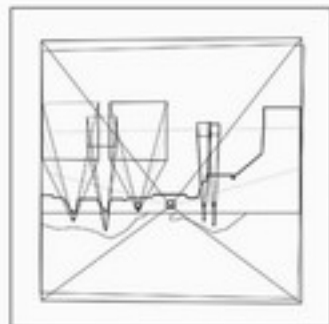
In Havana, a horizontal vision-control is produced by the hollows in the corner of apartment building which is caused by the hurricane. Limited by the surrounding existing street boundaries, the theatrical space which affords a lot of opportunities for normal city life is defined precisely.



the vertical vision through multistory broken floors generates the vertical theatrical typology which is normally ignored in architecture fact.



one whole building block is ruined and then deconstructed to be a wall with several holes and a heap of concrete. The site is divided by the wall into two parts. Holes in the wall produce the series of visions.



## occupancy



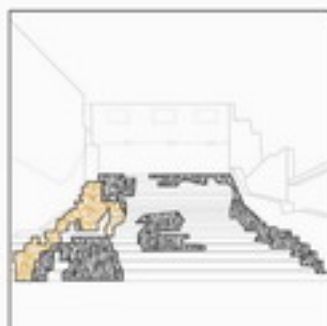
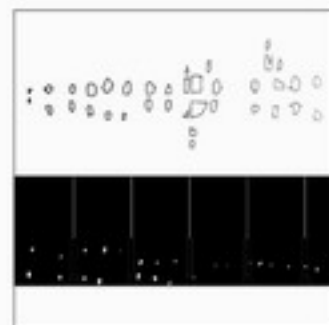
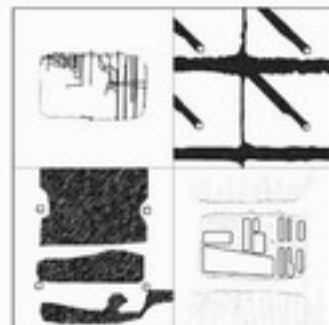
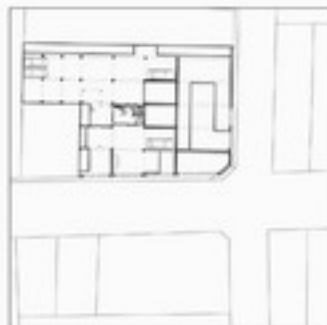
And in same ruins, the abandoned place appears strange for people. It generates its own unique situation. Sometimes, the way to occupy it is to use one's own body. Hidden in the corner, the occupier also becomes observed. Breath, watch and movement reforms the space like the act reforms the theatre.



It is believed that existential topography is based on the idea of space being shaped by man. The landscape of the ruins itself includes the traces of former people activity and traces of the lasting decay. And it has new ideas of space shaped by some people who either consciously or unconsciously behaves in the ruins.



nature





# Pieces

## Architectural Fact

## Theatrical

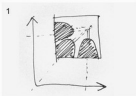
## Hollow

## Topic

## Vision

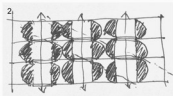
## Series

## Stage



Remnant

Occupancy

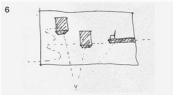


Backyard



Overlap

Passing



Aisel



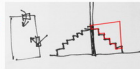
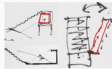
Rust

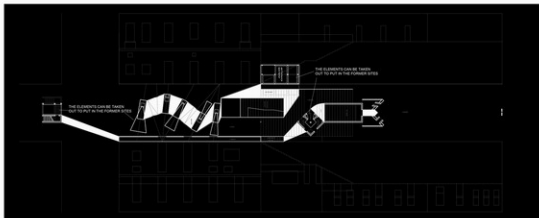
Nature



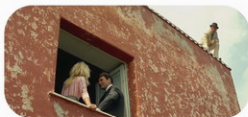
Garden







enframed scenery















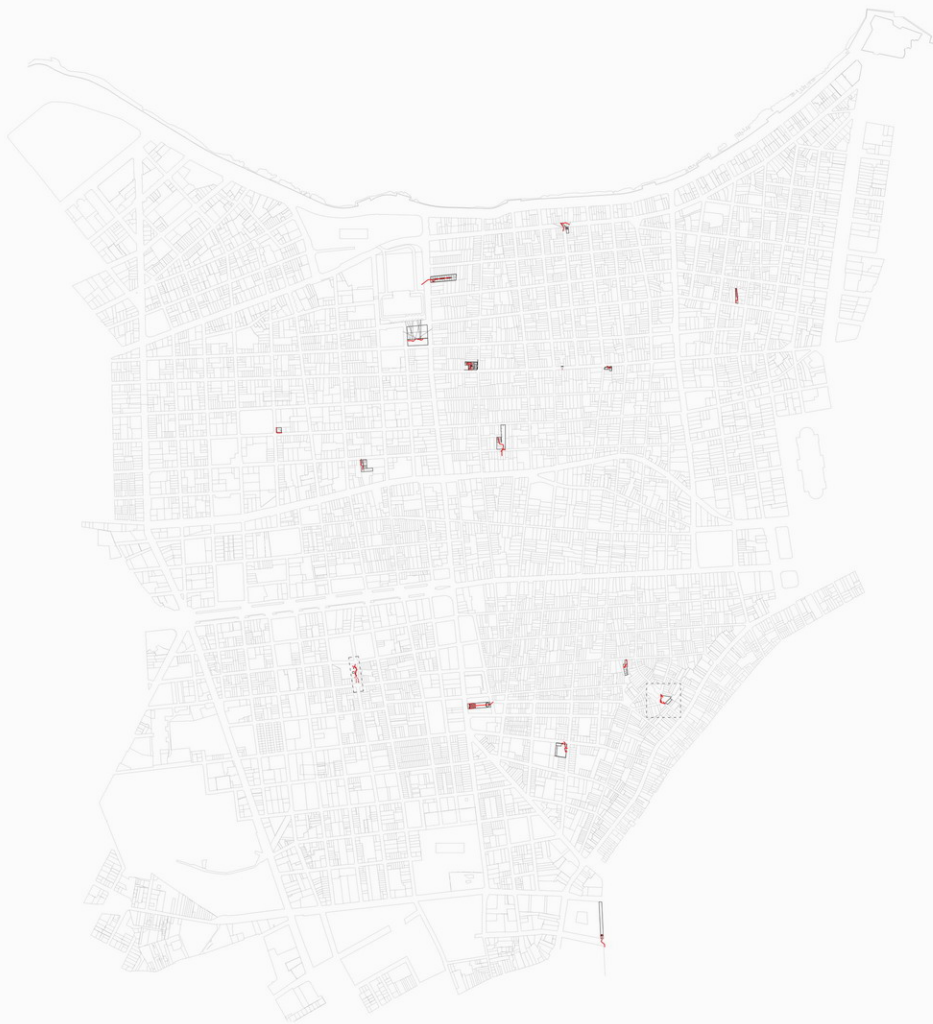








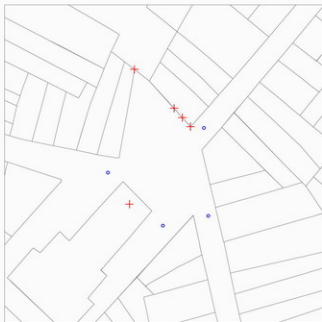


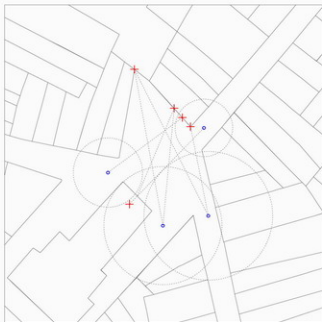


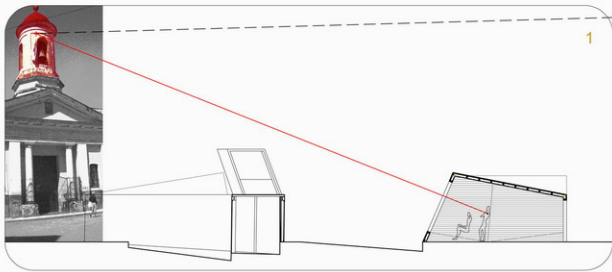
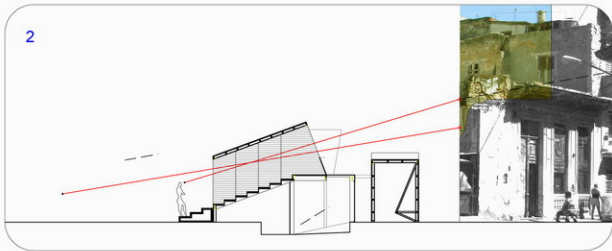
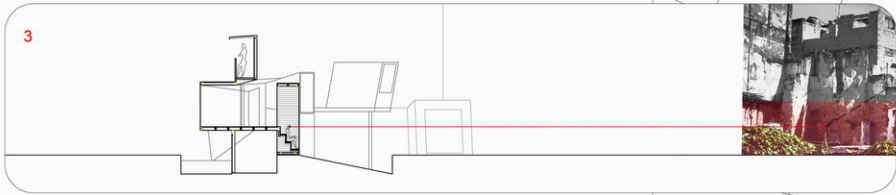
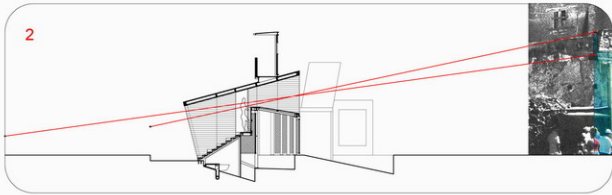
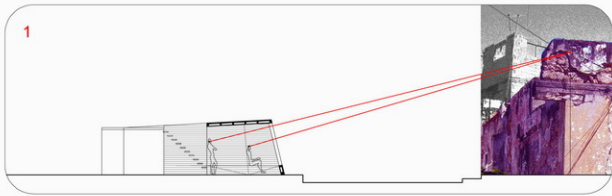


video

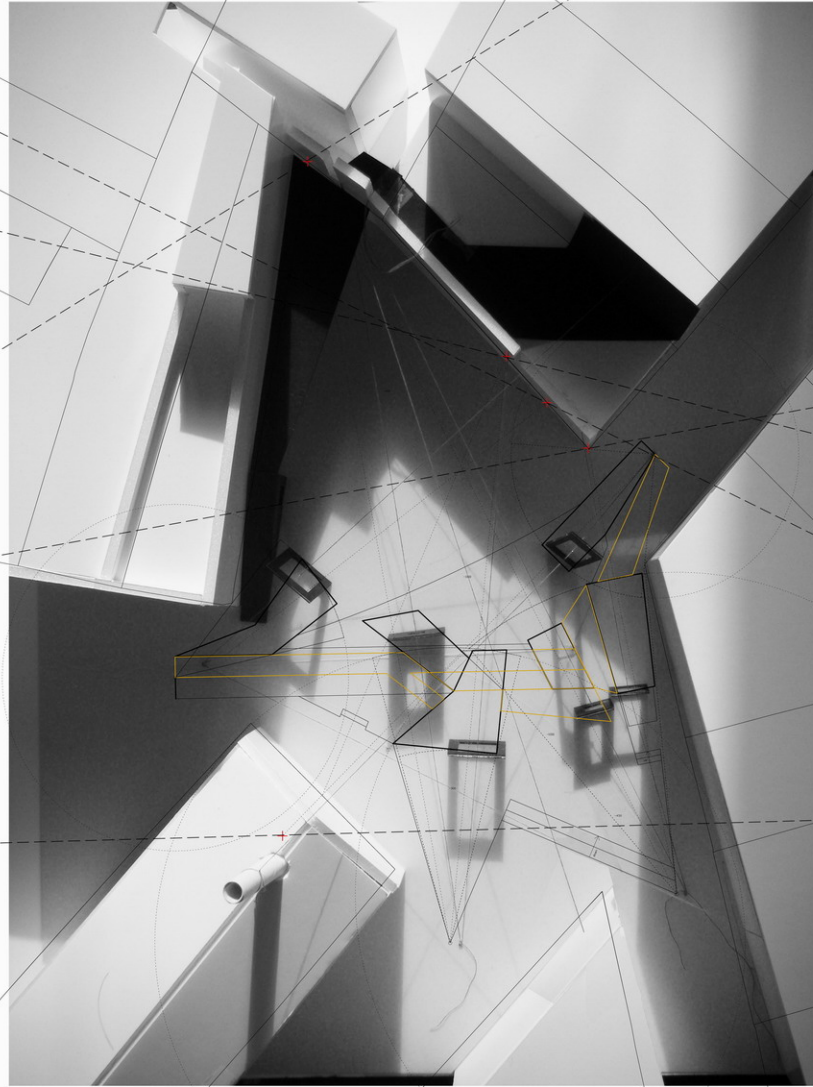
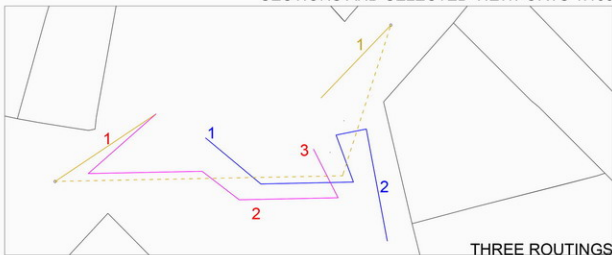


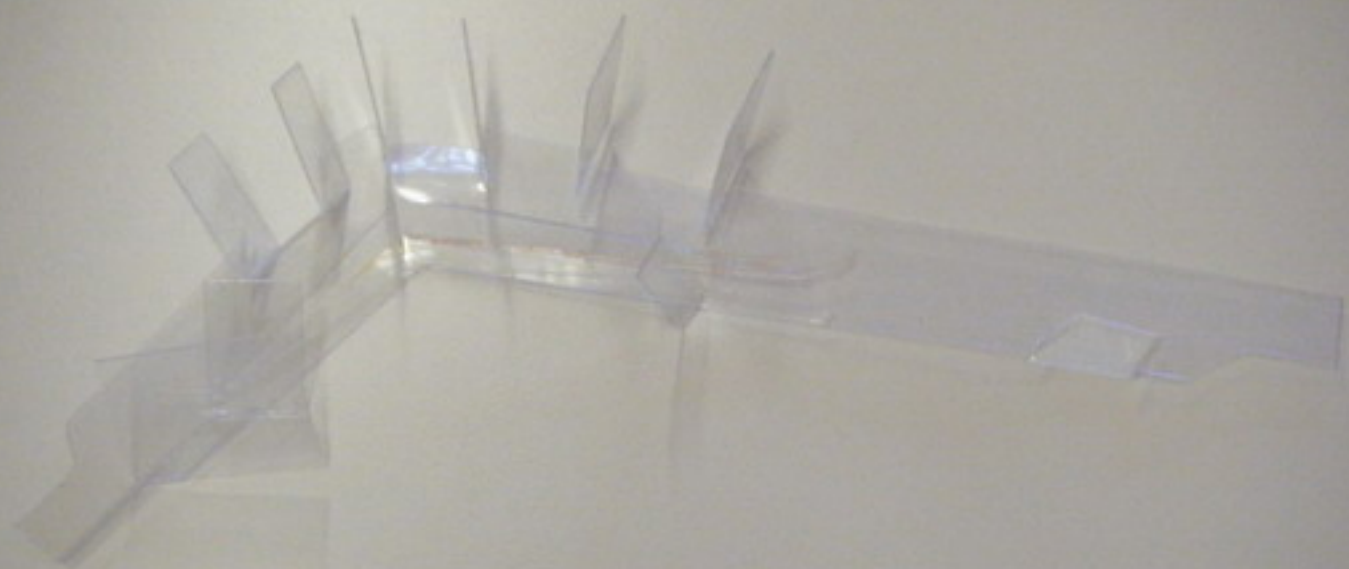




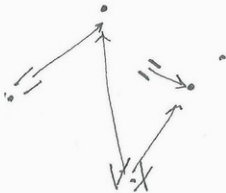
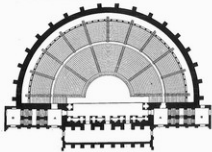


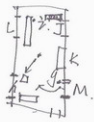
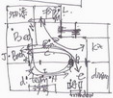
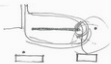
SECTIONS AND SELECTED VIEWPORTS 1:100





Figs. 718. Theater built by Herodes Atticus, Athens. Plan





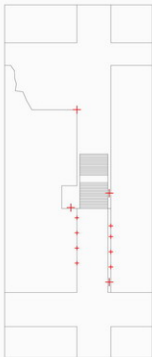


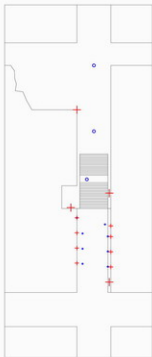


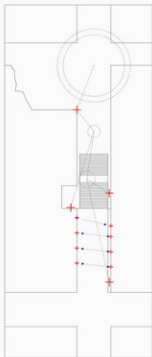
$1 \rightarrow A$      $A \leftrightarrow 3$      $3 \rightarrow B$   
 $0 \rightarrow B$      $B \leftrightarrow 2$      $2 \rightarrow A$

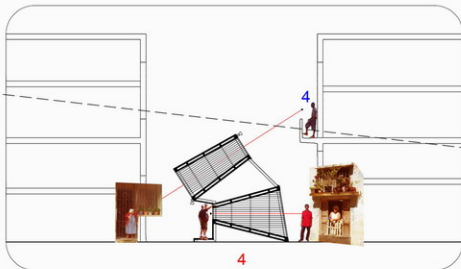
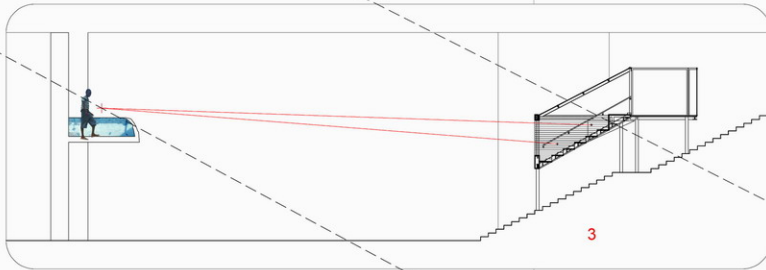
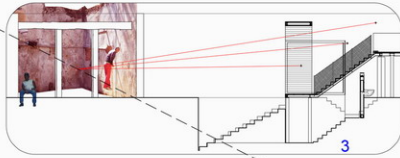
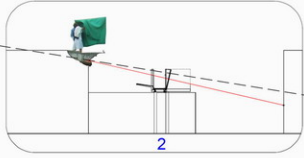
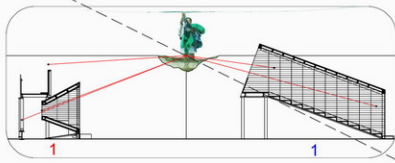
$B \rightarrow 0$      $0 \rightarrow 2$   
 $A \rightarrow 0$      $0 \rightarrow 0$



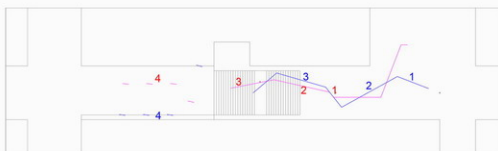




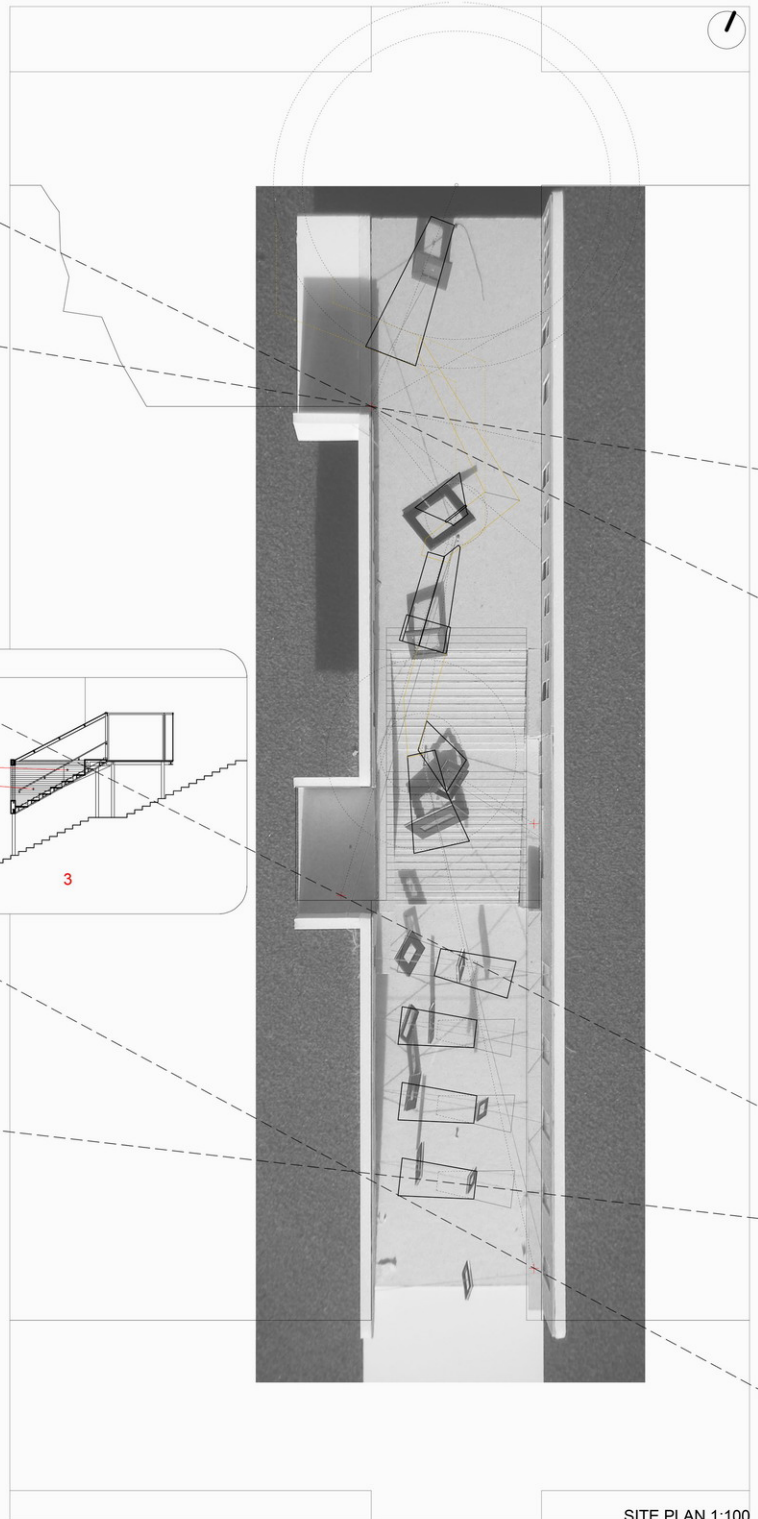




SECTIONS AND SELECTED VIEWPORTS 1:100



DOUBLE ROUTING 1:100



SITE PLAN 1:100

## Micro Theatre

### City Furniture (Stage)

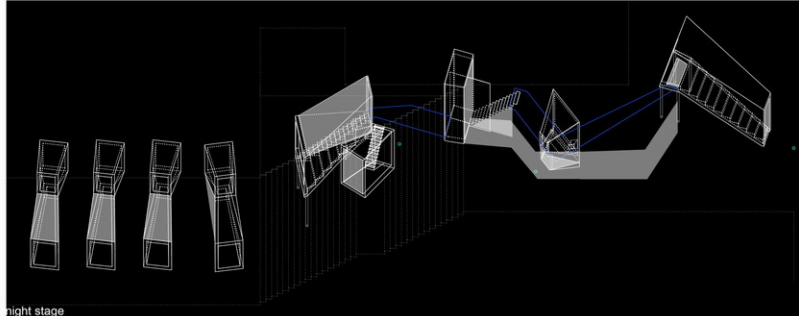
During the night, surrounding is dark. With the light on, the elements (wood box, toliets, passage, bridge, steps, metal mesh, steel frame, spymirror, glass ...) could set as stages for any specific play. Neighbour can come here and walk around to enjoy the play.

### Building (Theatre)

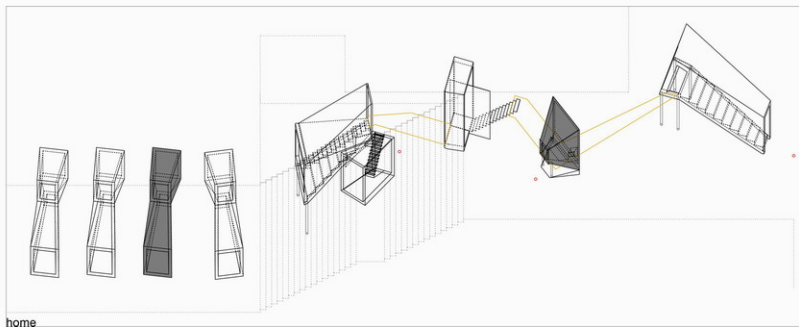
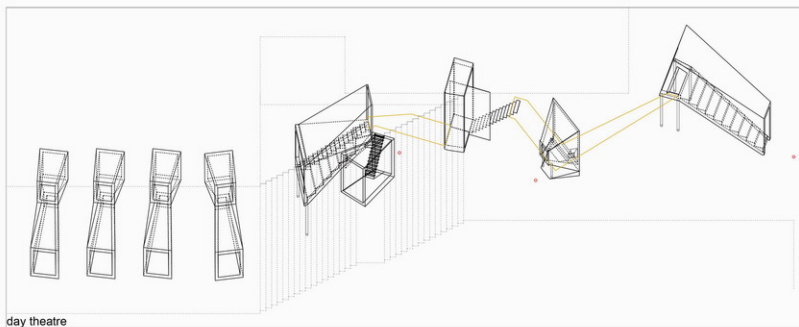
During the day, people walk to school, market, factory, office who can quickly pass by or stand in front of one box for several minutes to watch the selected viewports (decay).

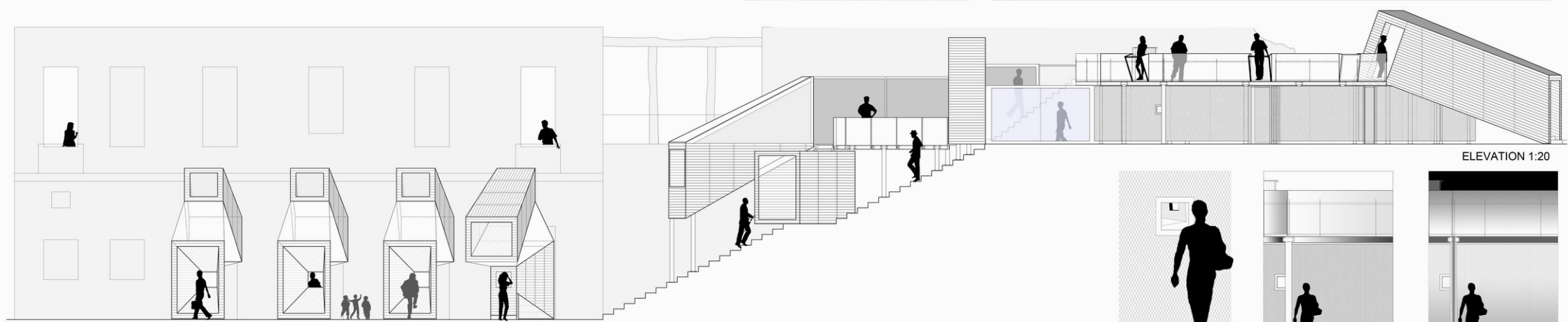
### Instrument (Home)

The instrument is totally open. Some parts ( some box which is allowed to be occupied by one person for short time) also could be his temporary shelter.



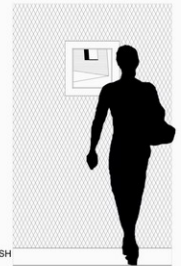
## MATERIAL

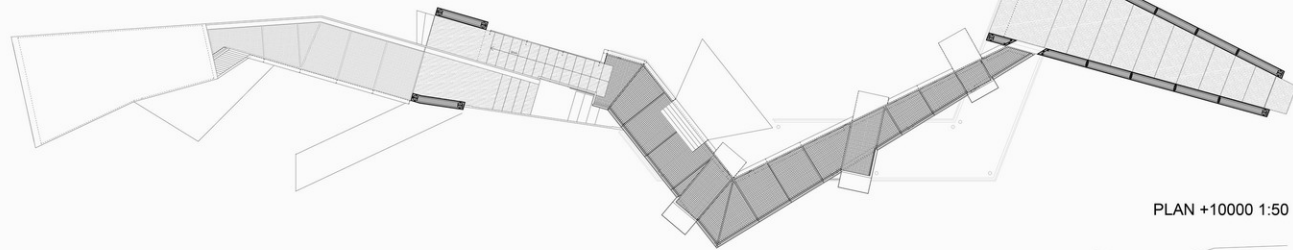
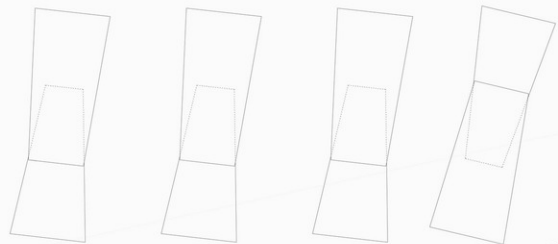
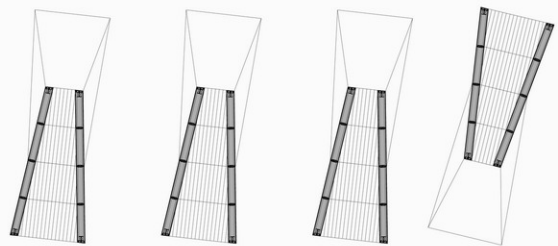
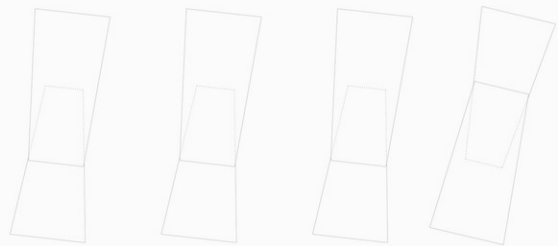




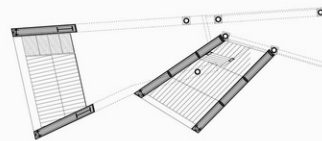
ELEVATION 1:20

EXPANDED ALUMINUM MESH  
polished aluminum/ light/ weather well

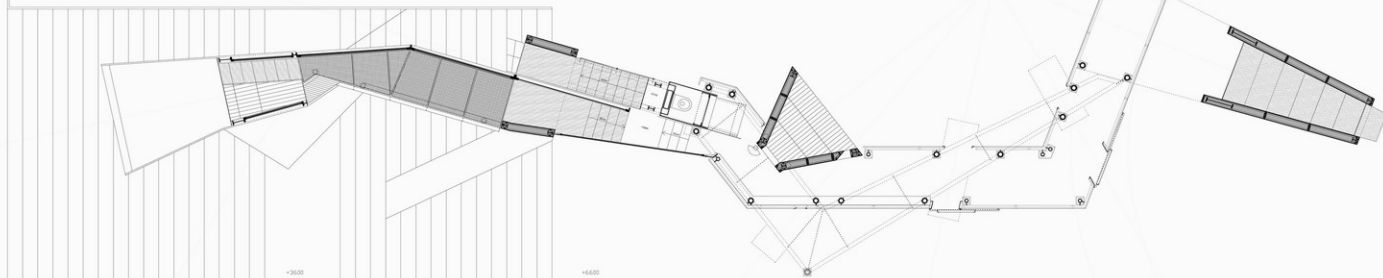
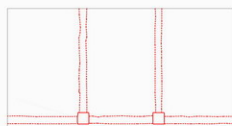




PLAN +10000 1:50

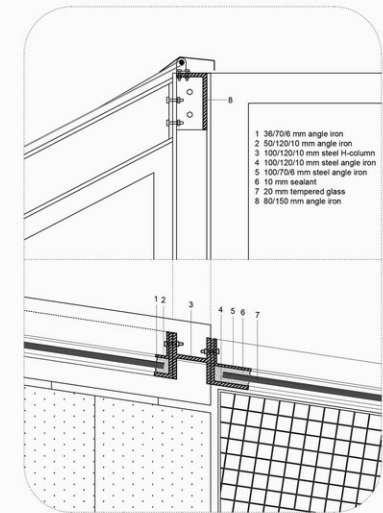
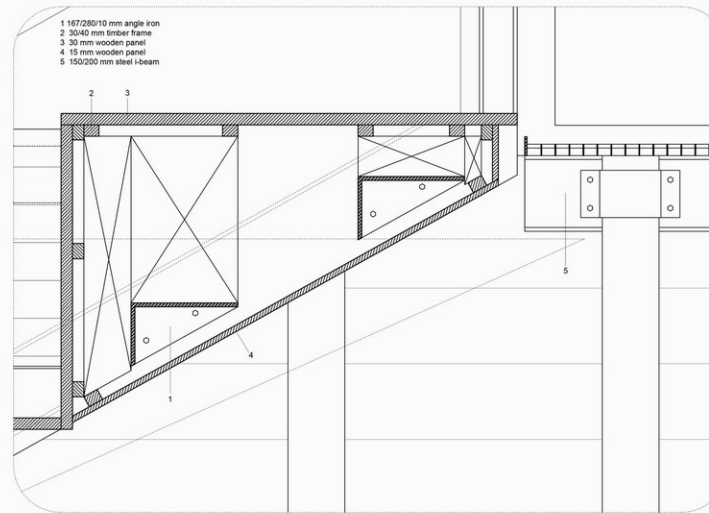
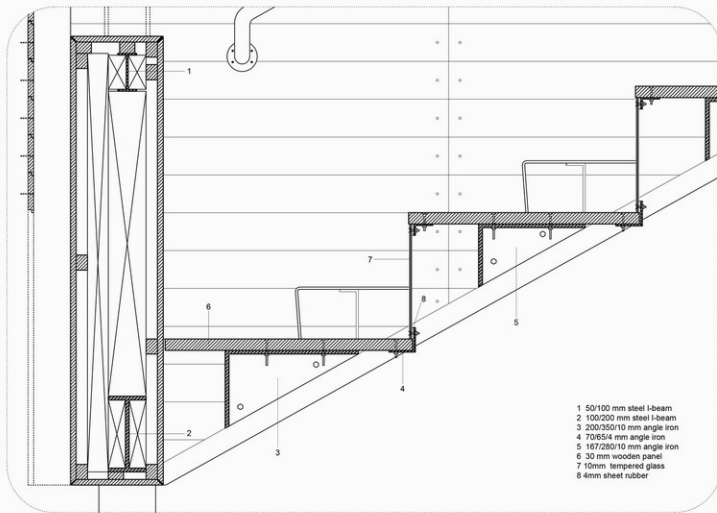


PLAN +4600 1:50

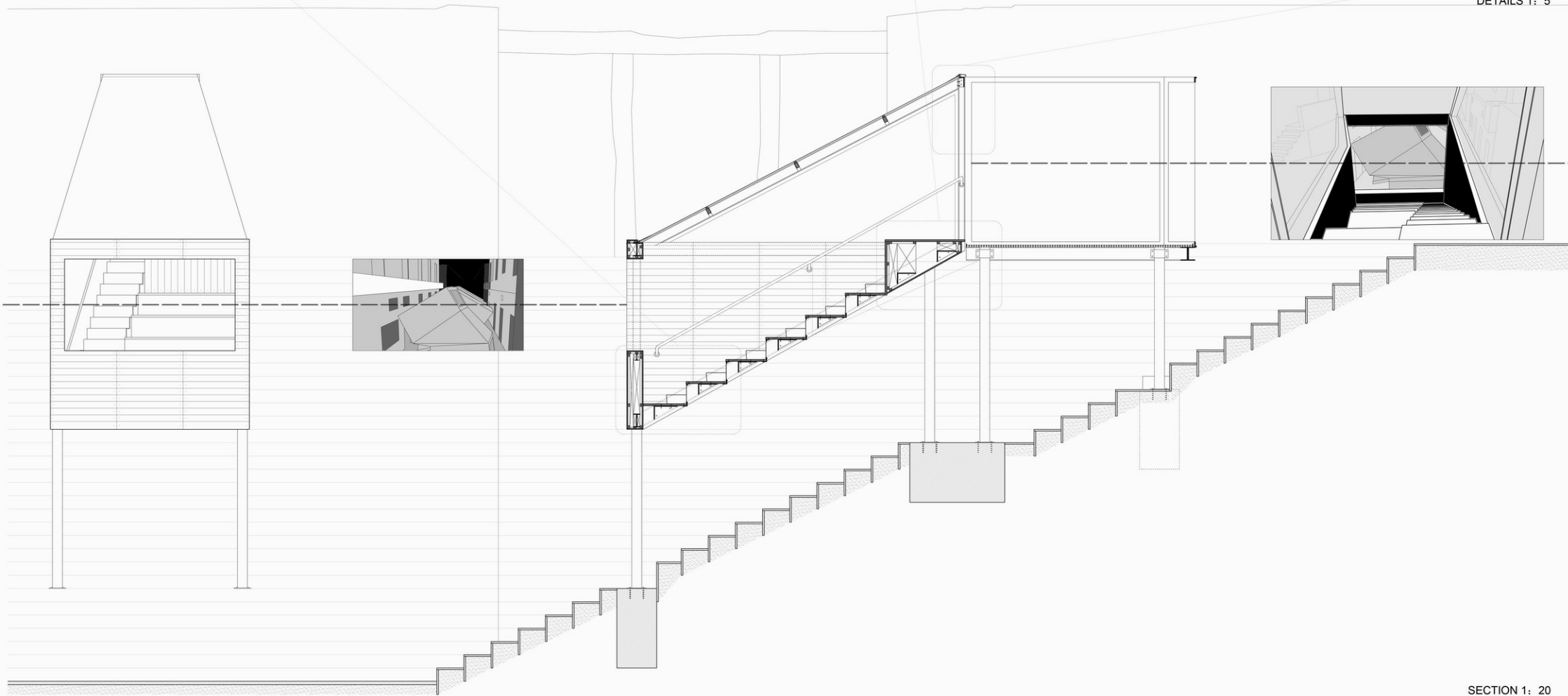


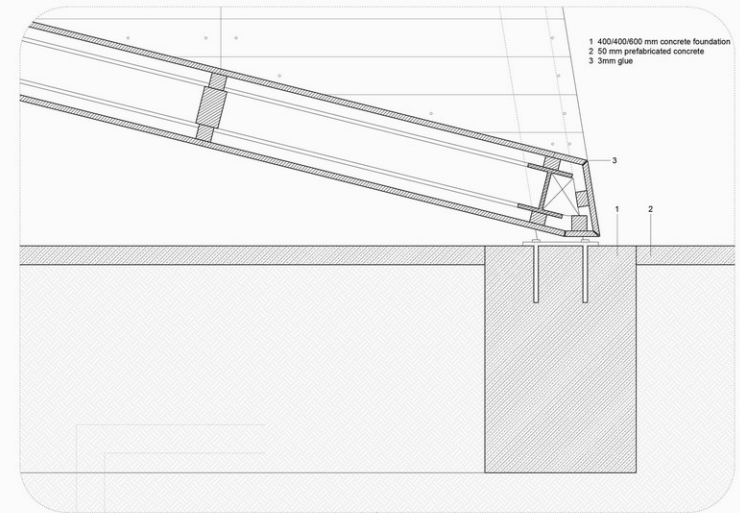
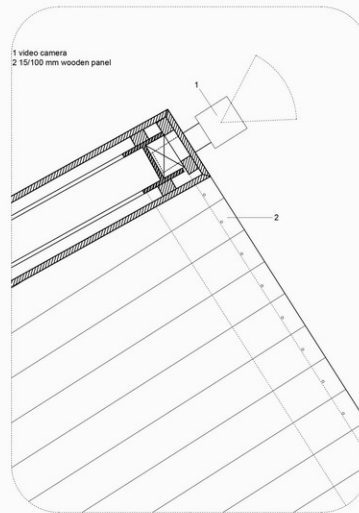
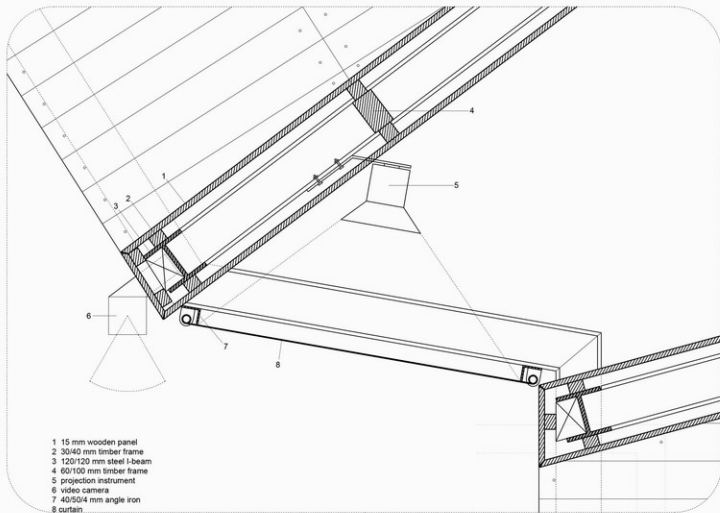
PLAN +8100 1:50



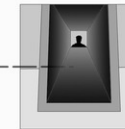
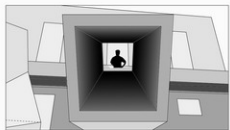
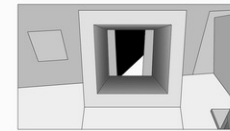


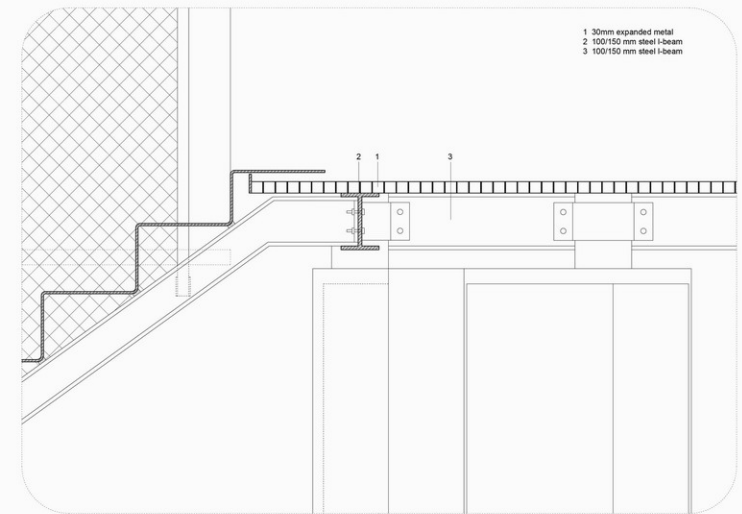
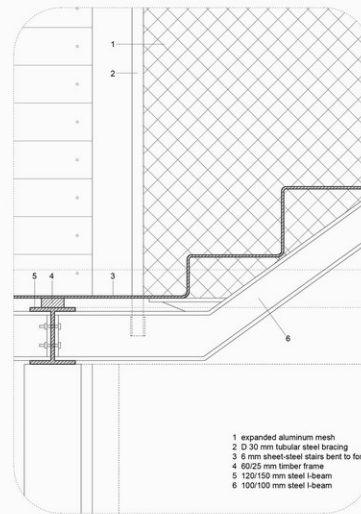
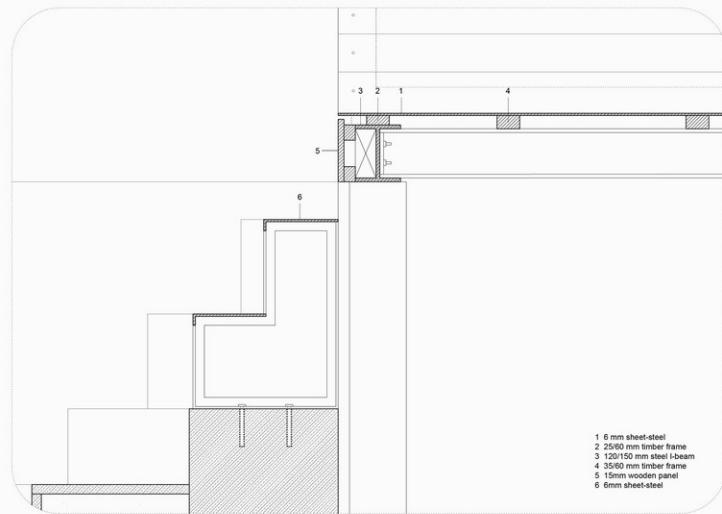
DETAILS 1: 5



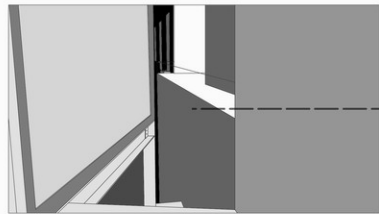


DETAILS 1: 5

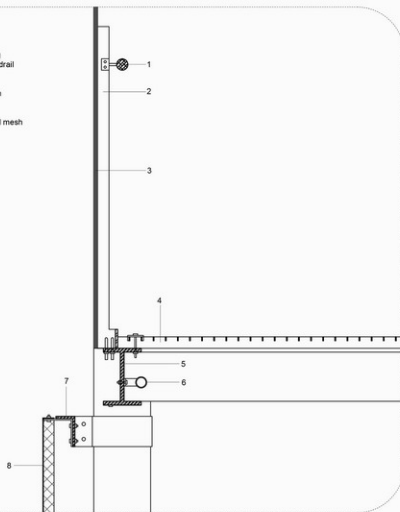




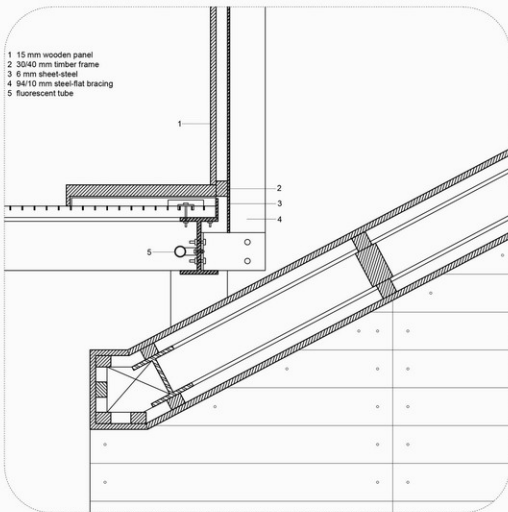
DETAILS 1: 5



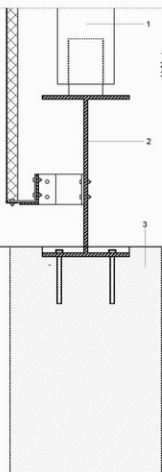
- 1 6 mm sheet-steel bracing
- 2 30 mm wood tubular handrail
- 3 10 mm tempered glass
- 4 30 mm expanded metal
- 5 100/150 mm steel i-beam
- 6 fluorescent tube
- 7 50/80 mm angle iron
- 8 polished aluminum metal mesh



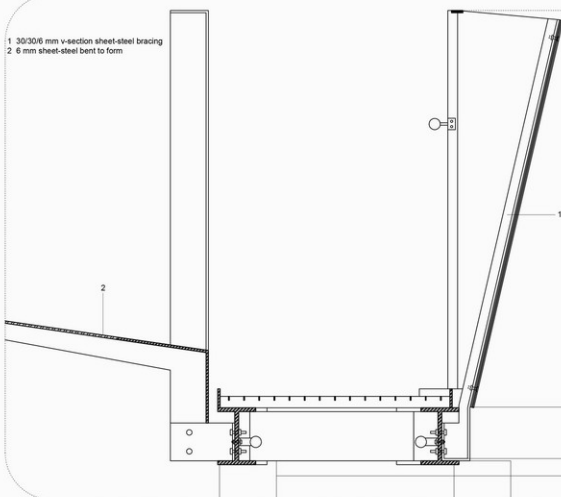
- 1 15 mm wooden panel
- 2 30/40 mm timber frame
- 3 6 mm sheet-steel
- 4 94/10 mm steel-flat bracing
- 5 fluorescent tube



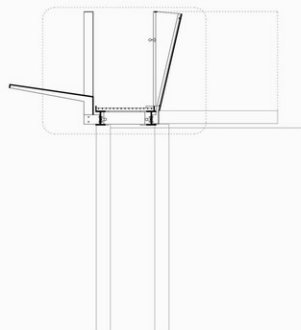
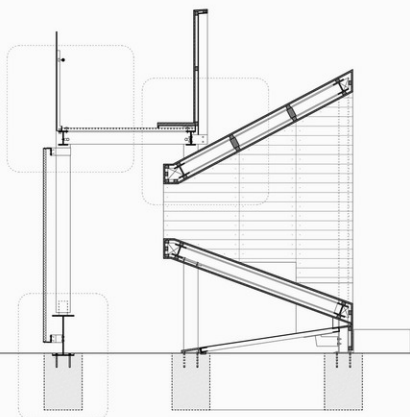
- 1 150 mm tubular column
- 2 230/426 mm steel i-beam
- 3 400/400/600 mm concrete foundation



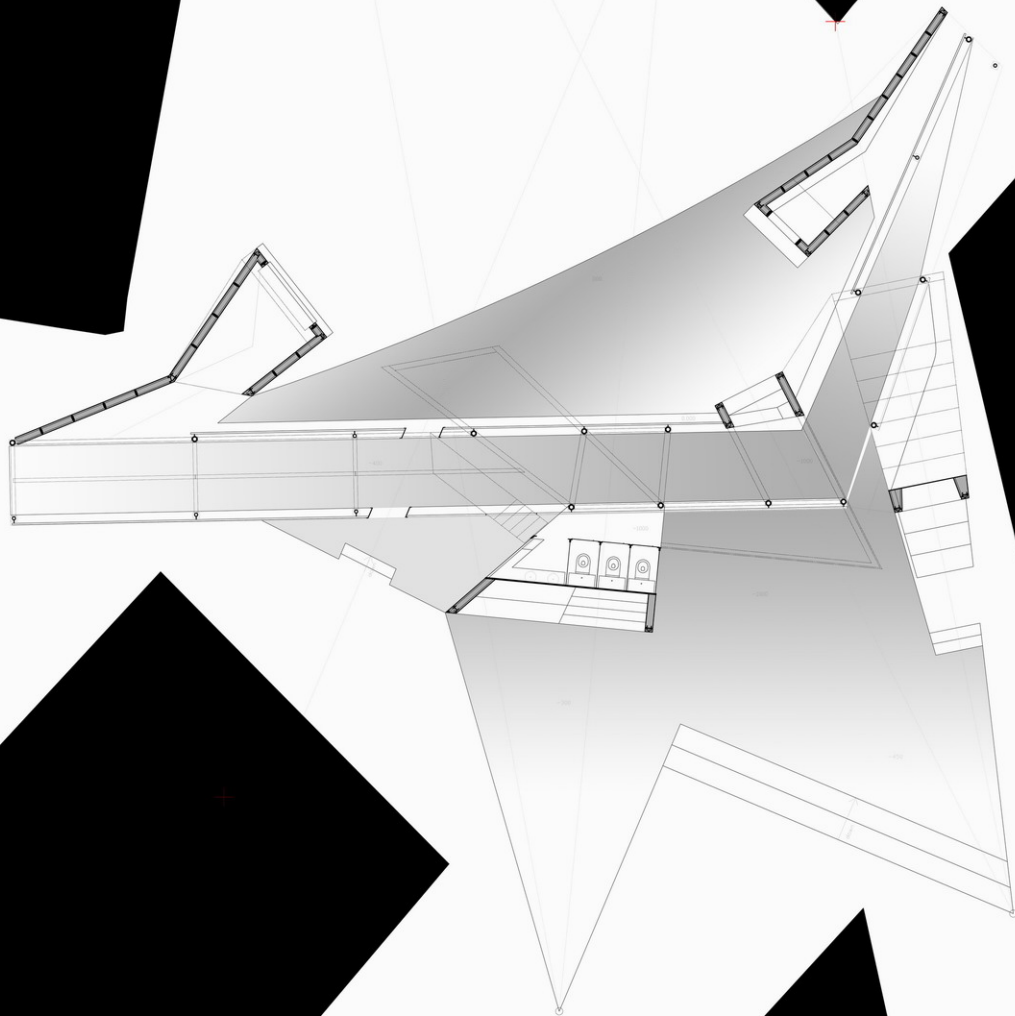
- 1 30/30/6 mm v-section sheet-steel bracing
- 2 6 mm sheet-steel bent to form



DETAILS 1:5

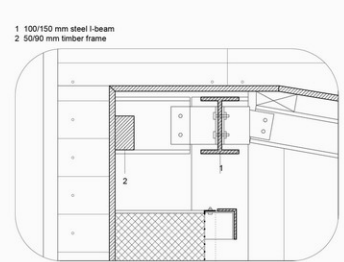
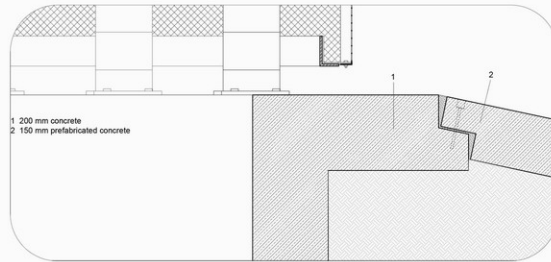
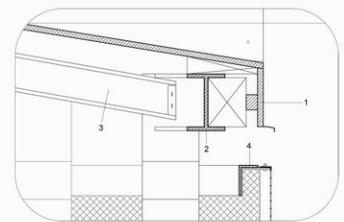
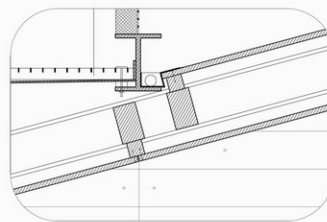
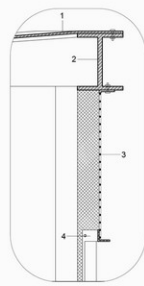
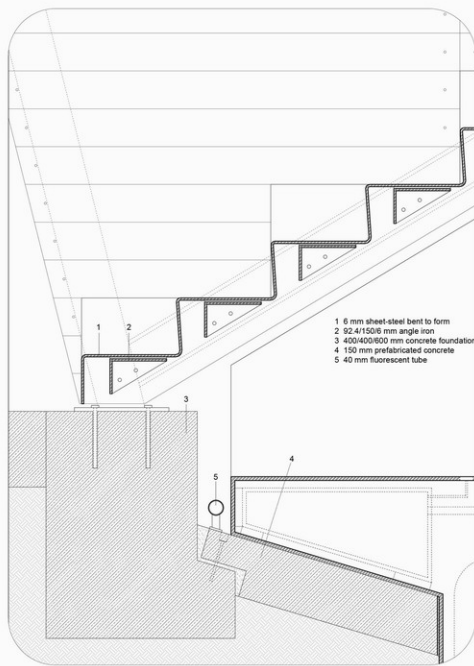


SECTIONS 1:20

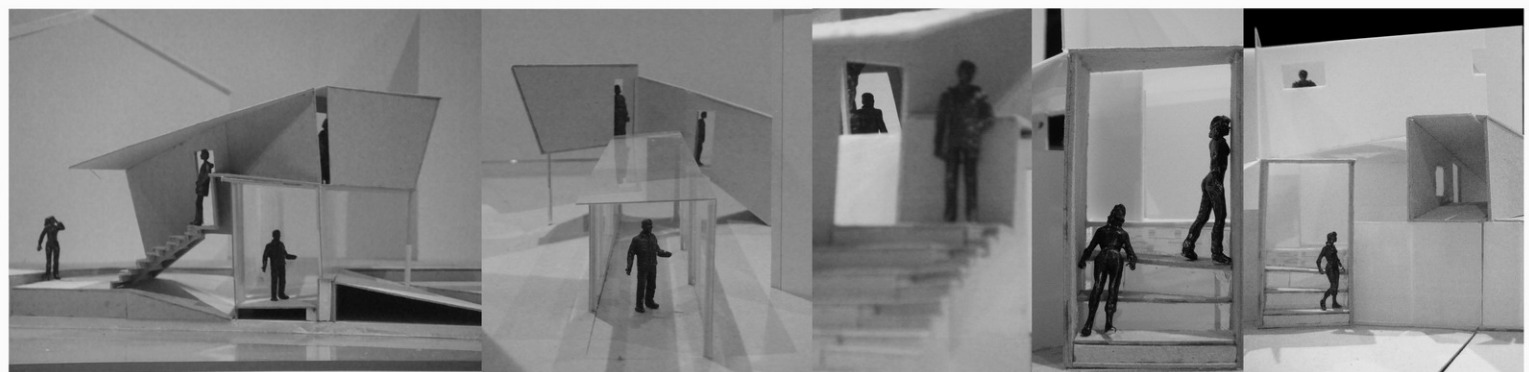
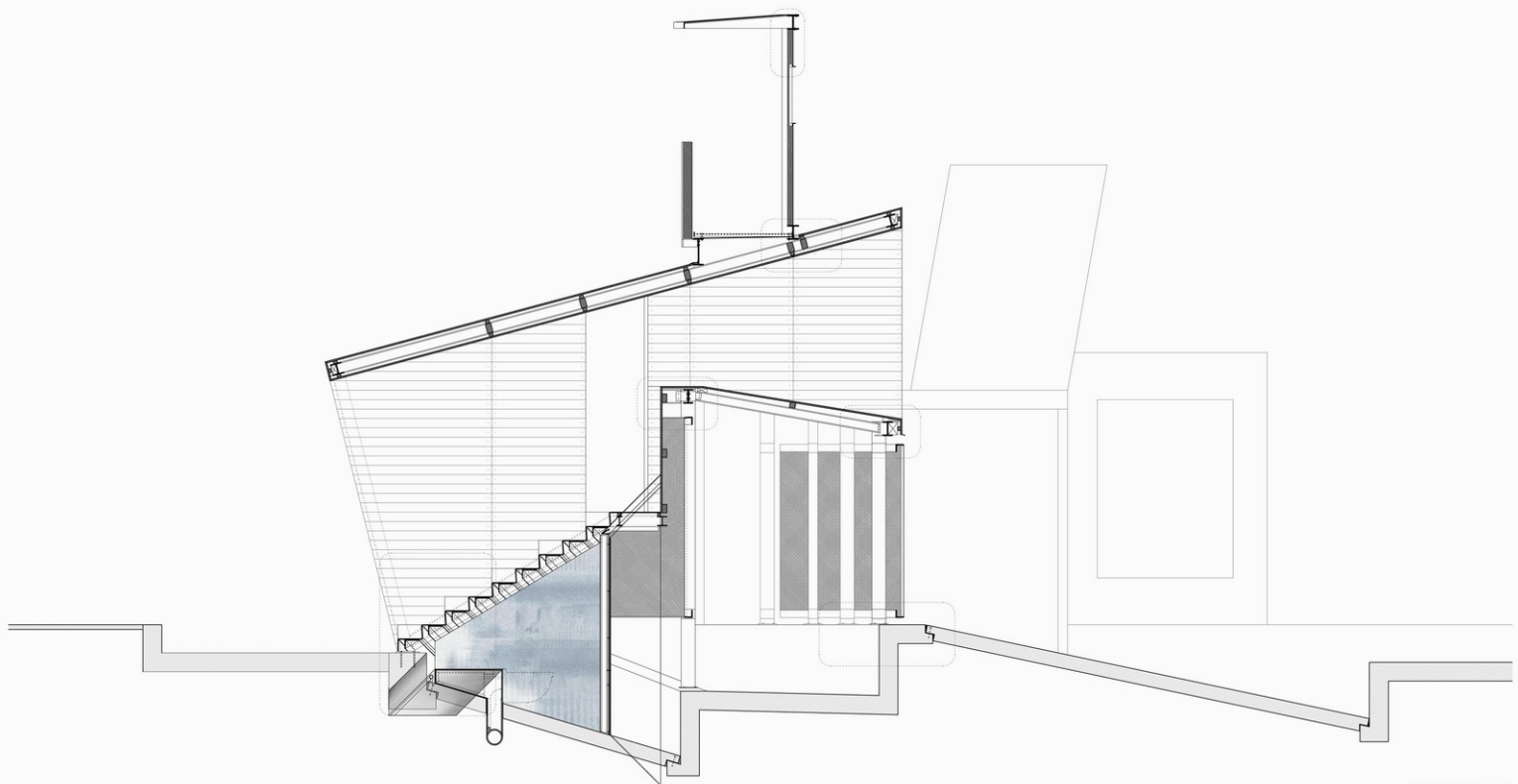


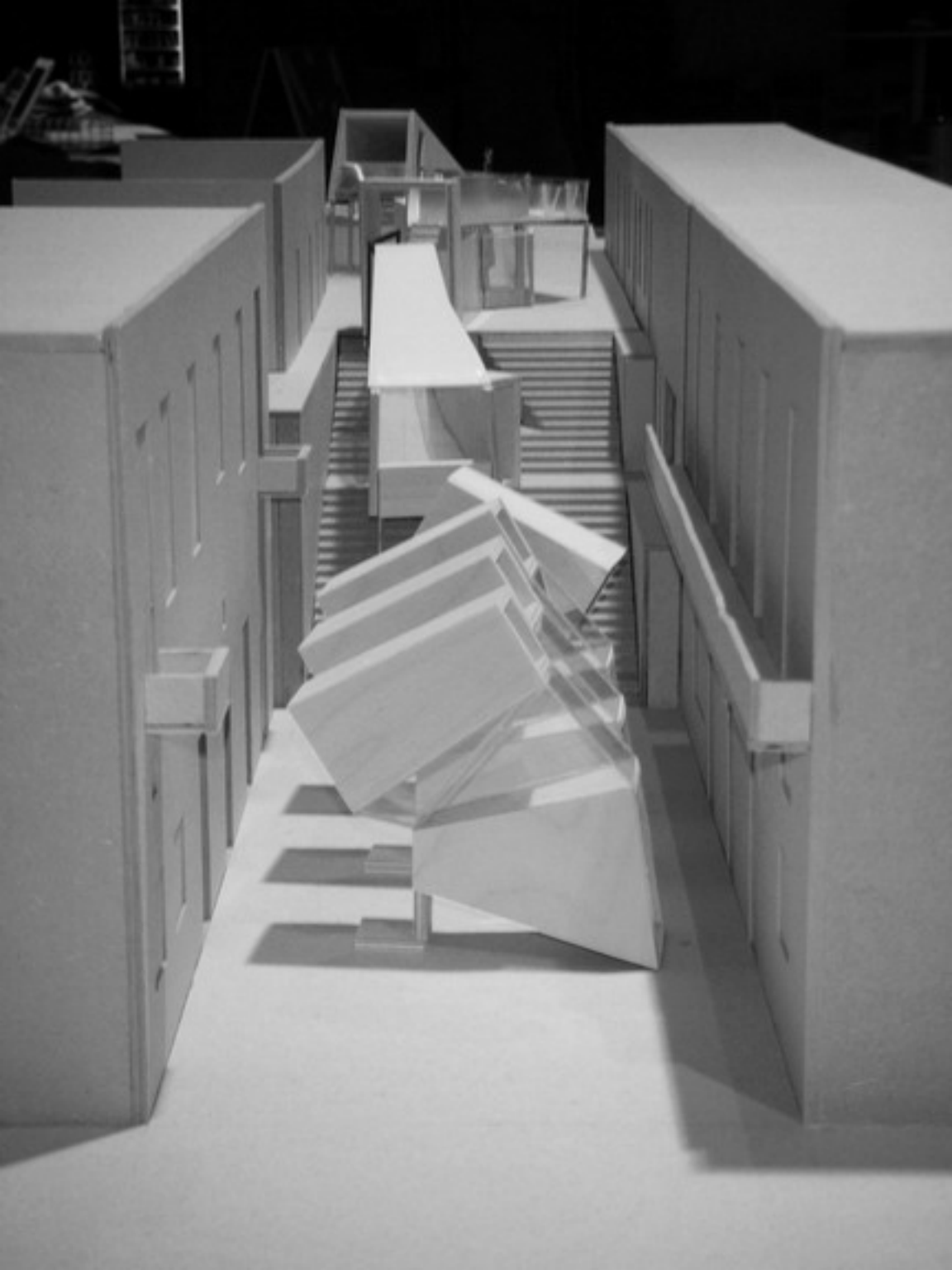






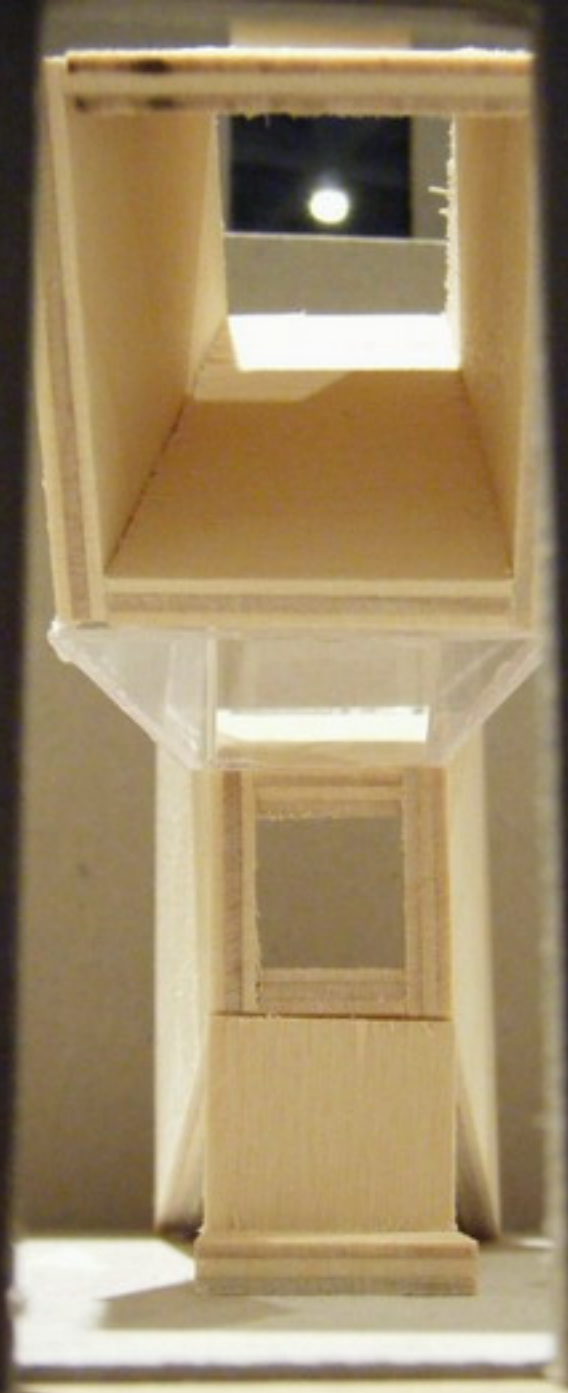
DETAILS 15







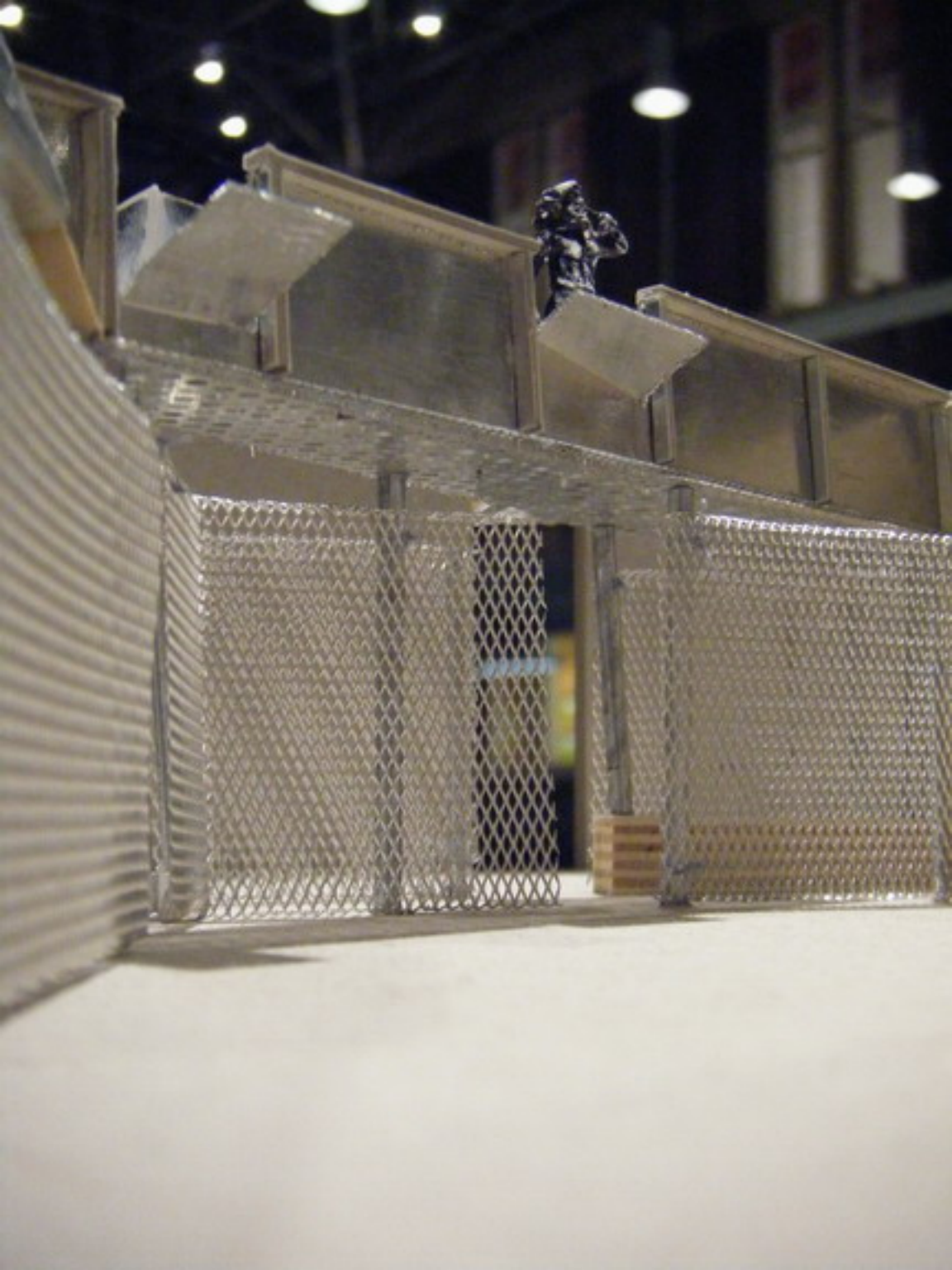


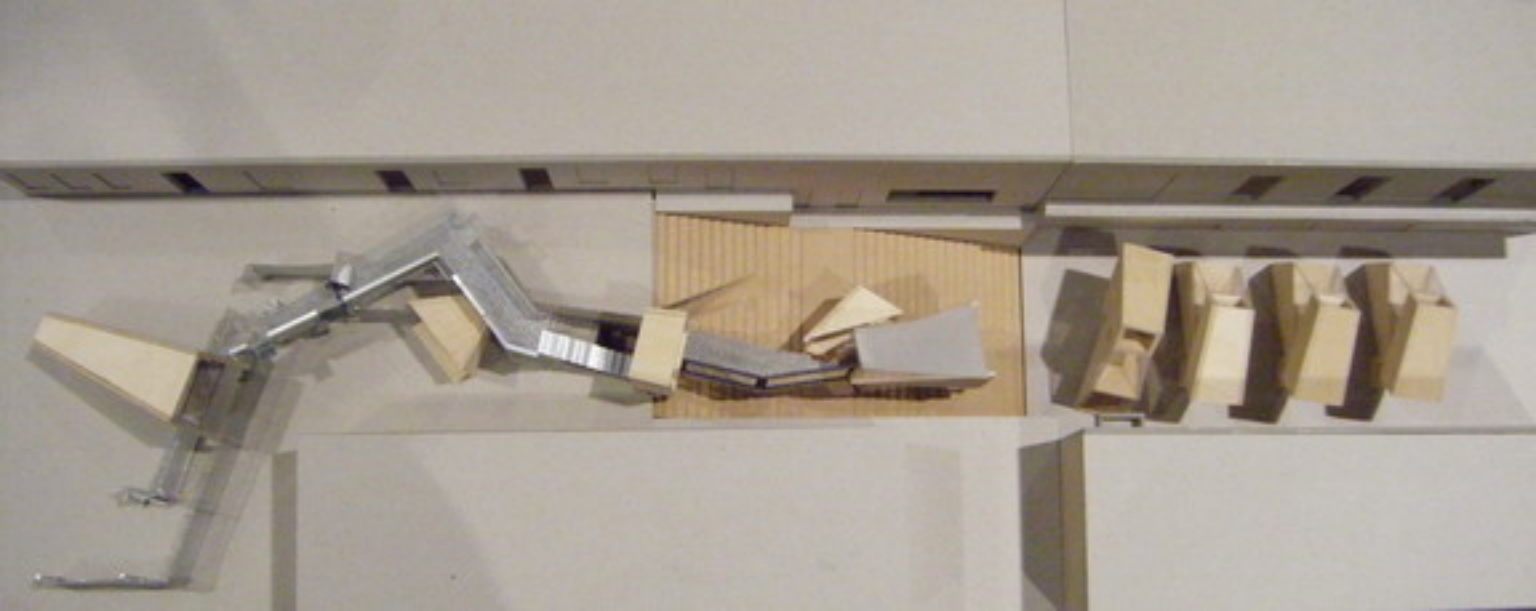












完

*Thank you*