

# hotel de Victor (de Groenmarkt)

*an attempt to reconnect a forgotten part of city*

a presentation on designing a public city block within the city centre of Amsterdam



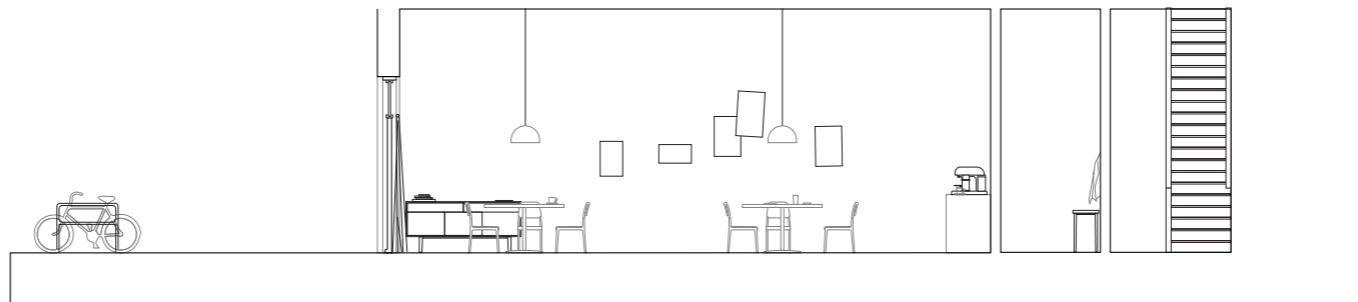
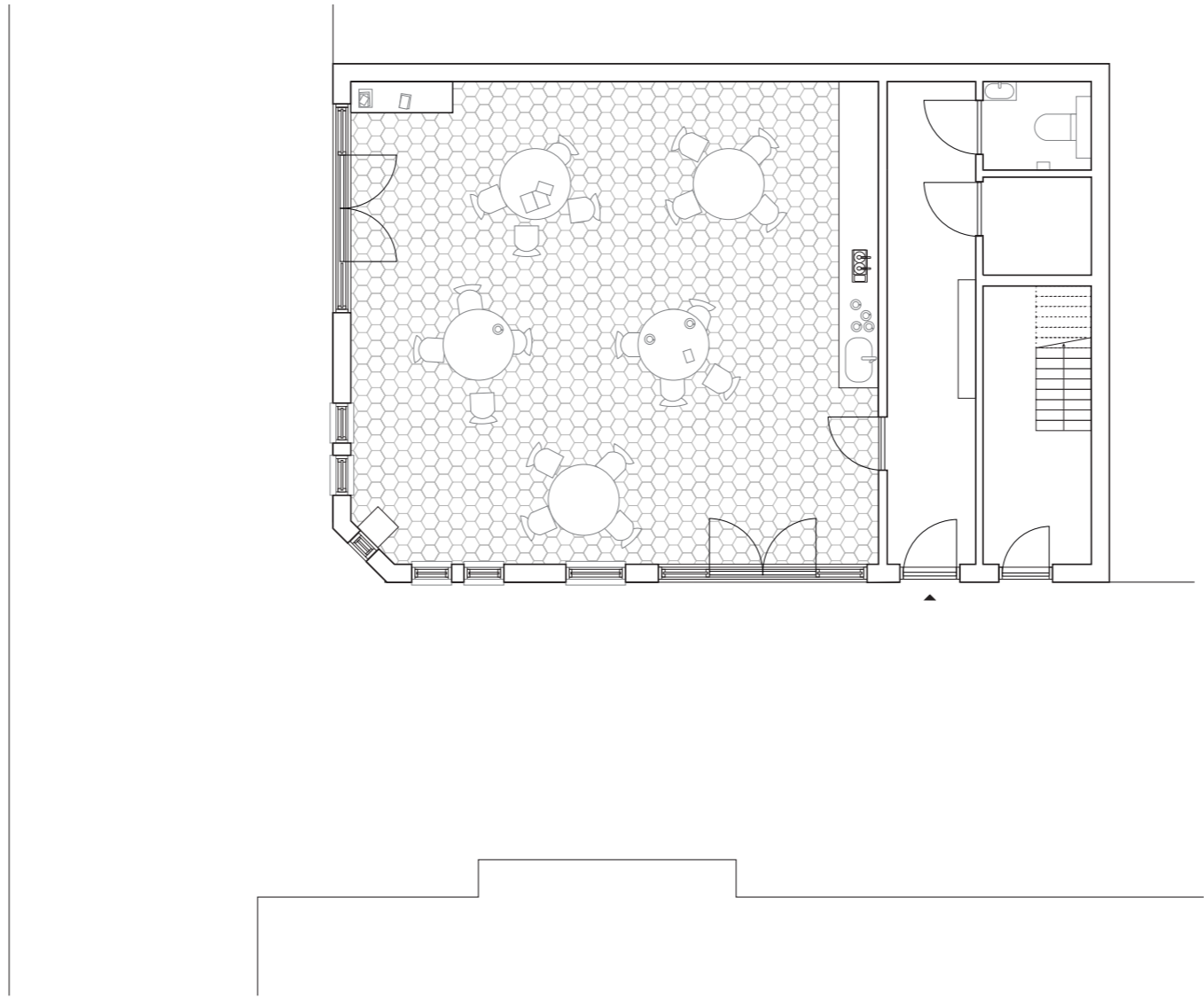
P5 presentation by Jasper Maiwald  
Interiors Buildings Cities  
Daniel Rosbottom, Mark Pimlott & Mauro Parravicini



the first coffee shop; 'mellow yellow'



red light district 'de Wallen' - Nadine Siddre (2006)



neighbourhood cafe, de wallen



neighbourhood cafe, de wallen

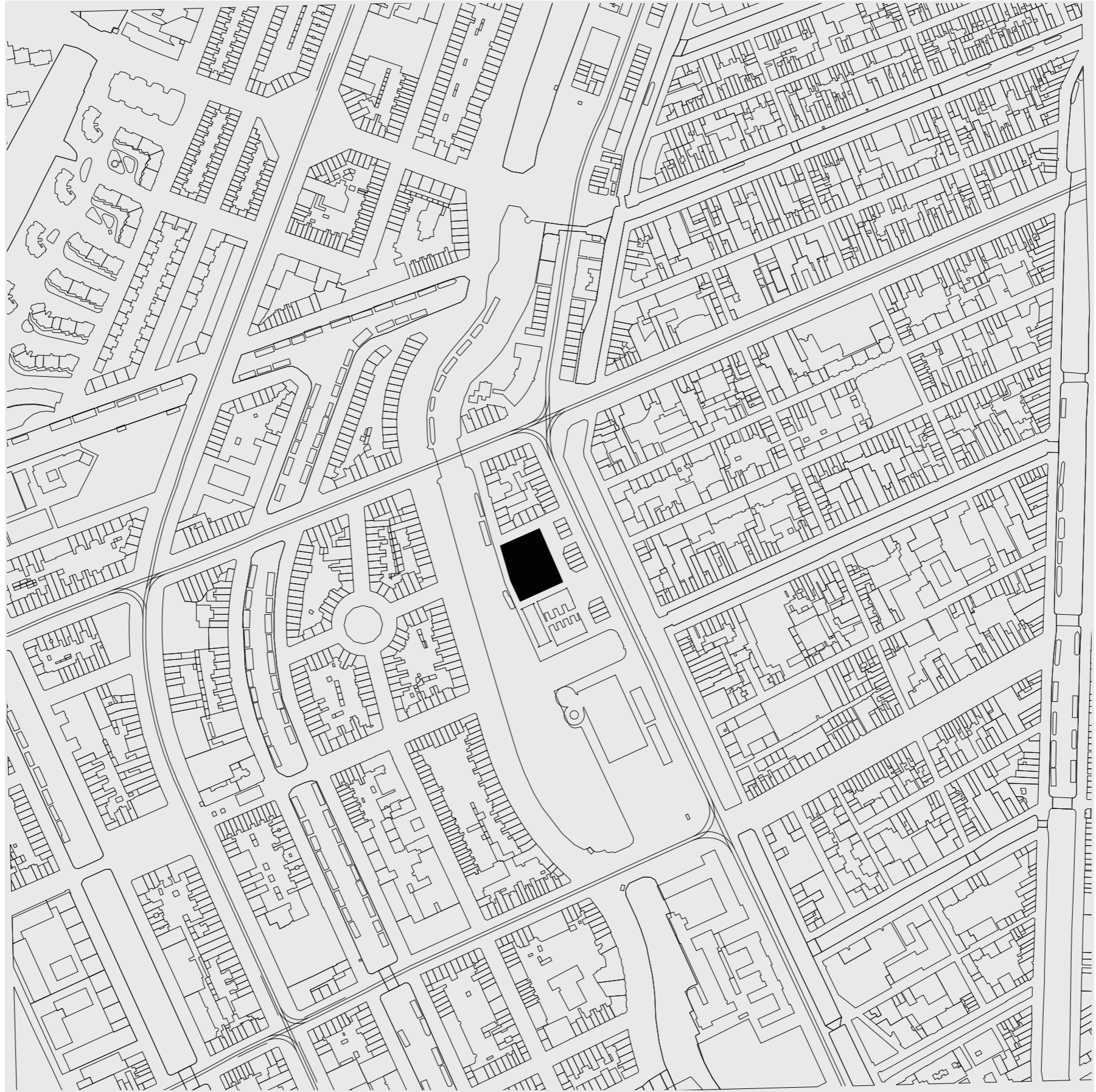


W Hotel Exchange  
Amsterdam  
2011-2015

W-Hotel, de Dam



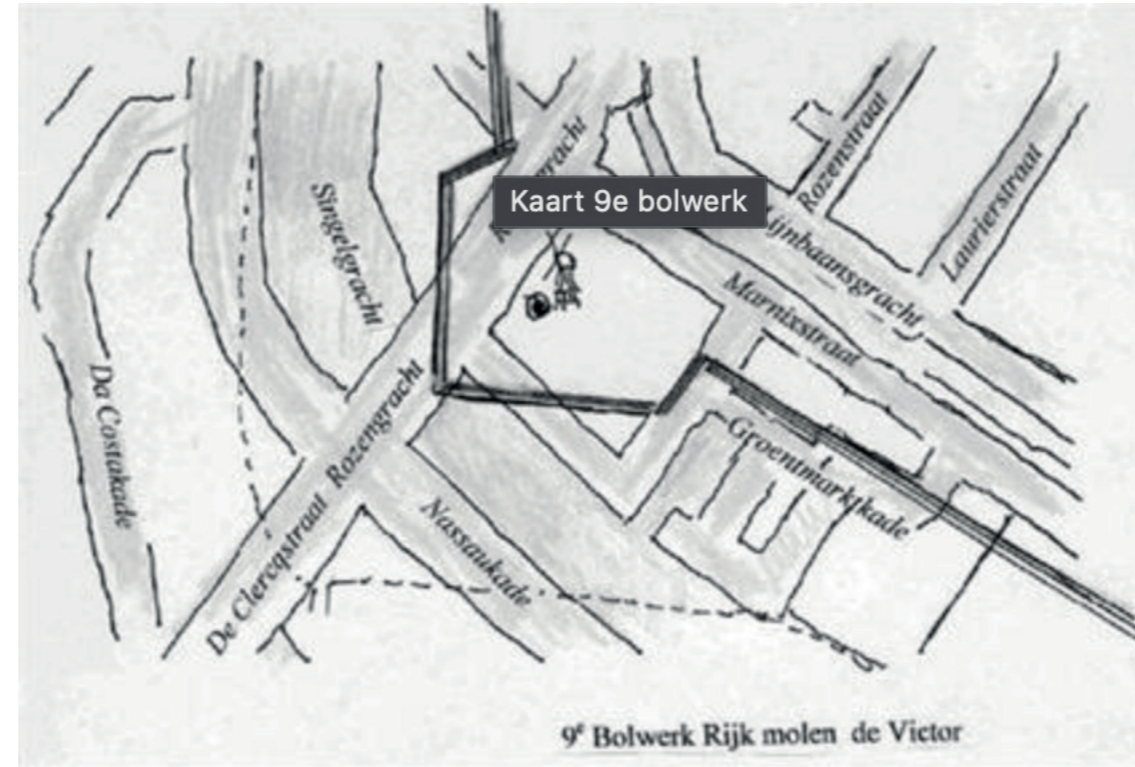
SOHO house, de Dam







Rembrandt van Rijn - molen de Victor



fortification de Victor



windmill de Victor



vegetable market on the marnixstraat



vegetable market on the marnixstraat



playground by Aldo van Eyck



playground by Aldo van Eyck



playground by Aldo van Eyck



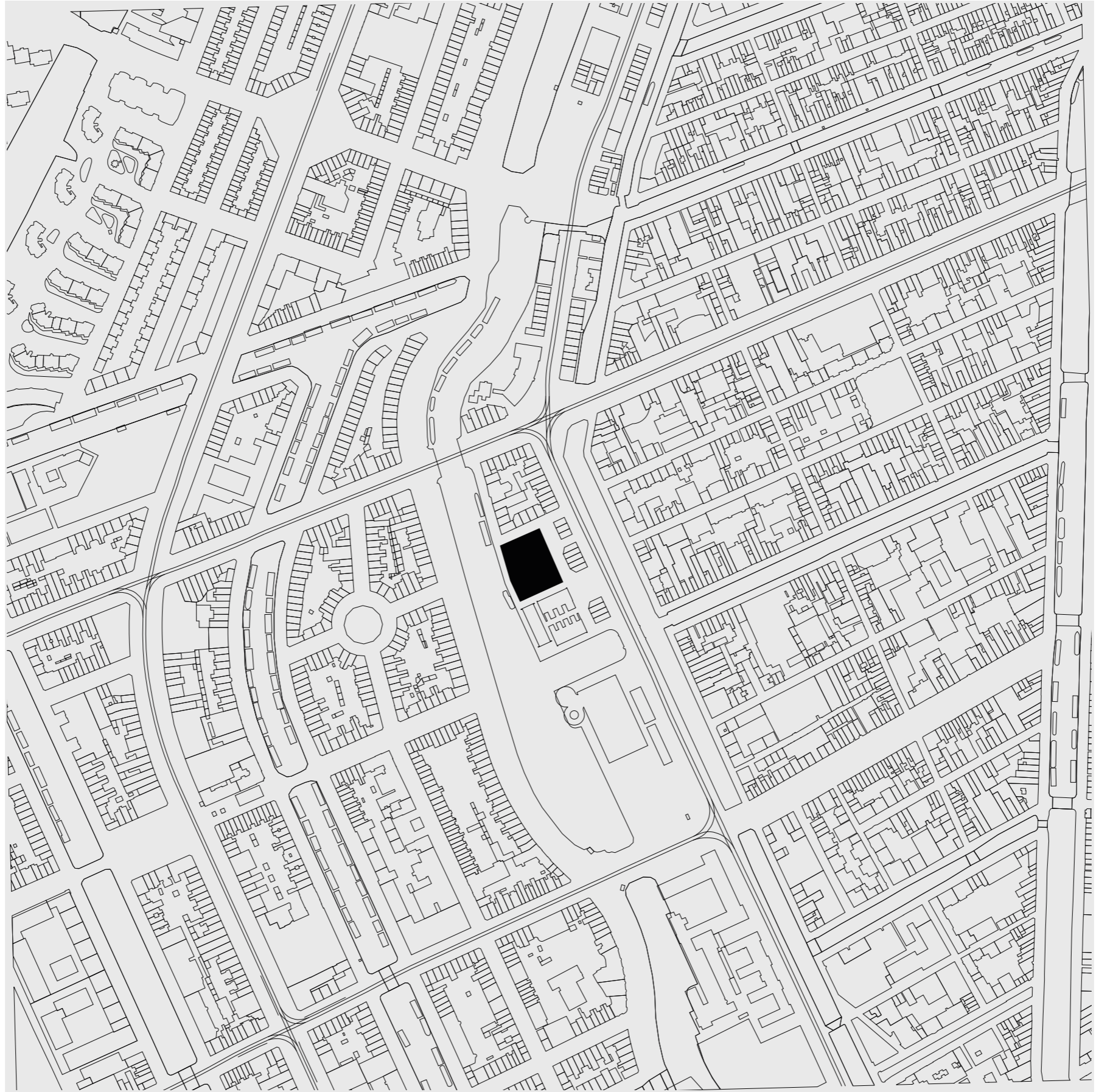


erial view of groenmarkt

# the city block

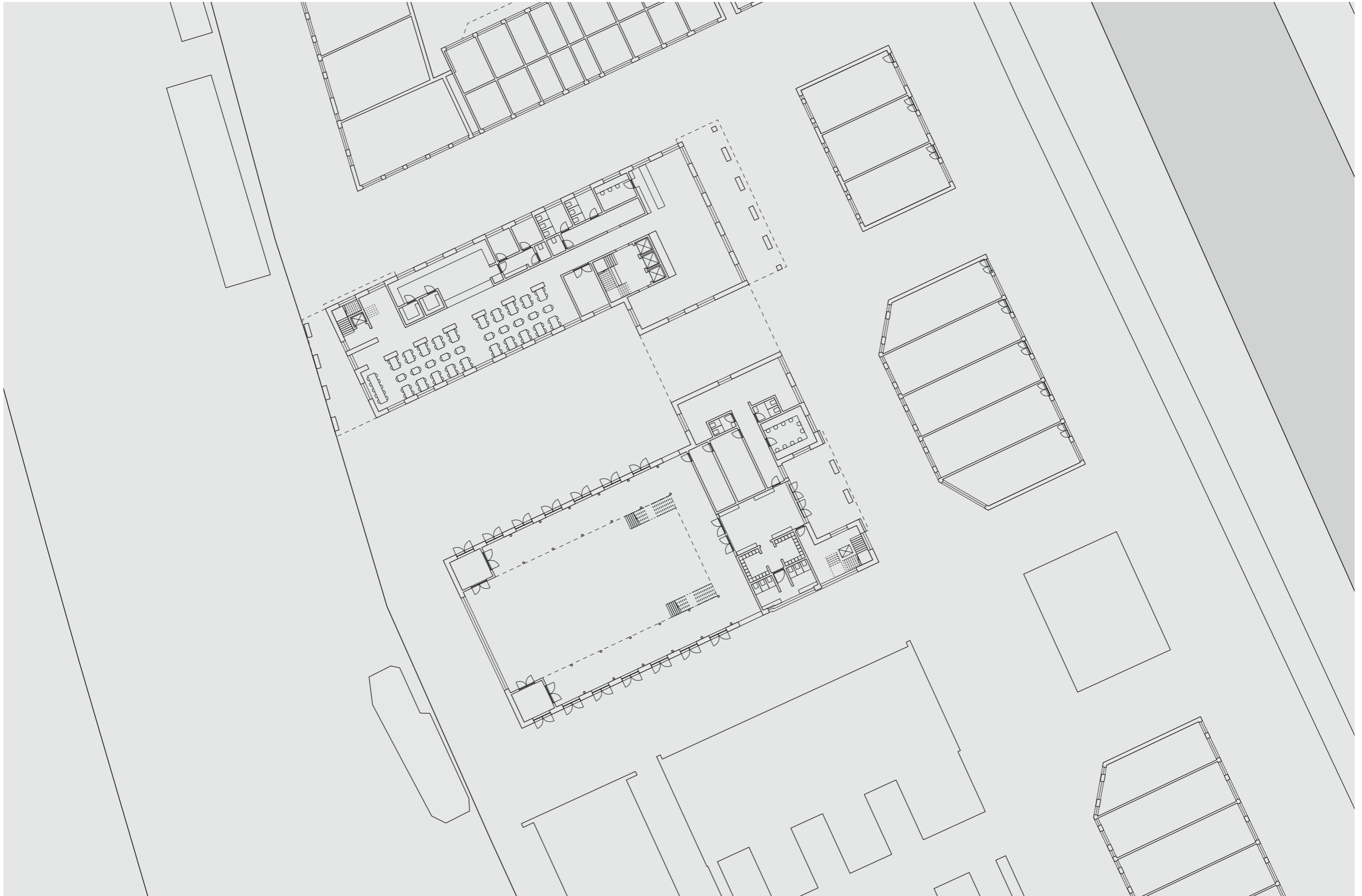
*reconstruction of the old market hall and the construction of a hotel*

viewed through plans





Florian Beigel - publishing house



ground floor

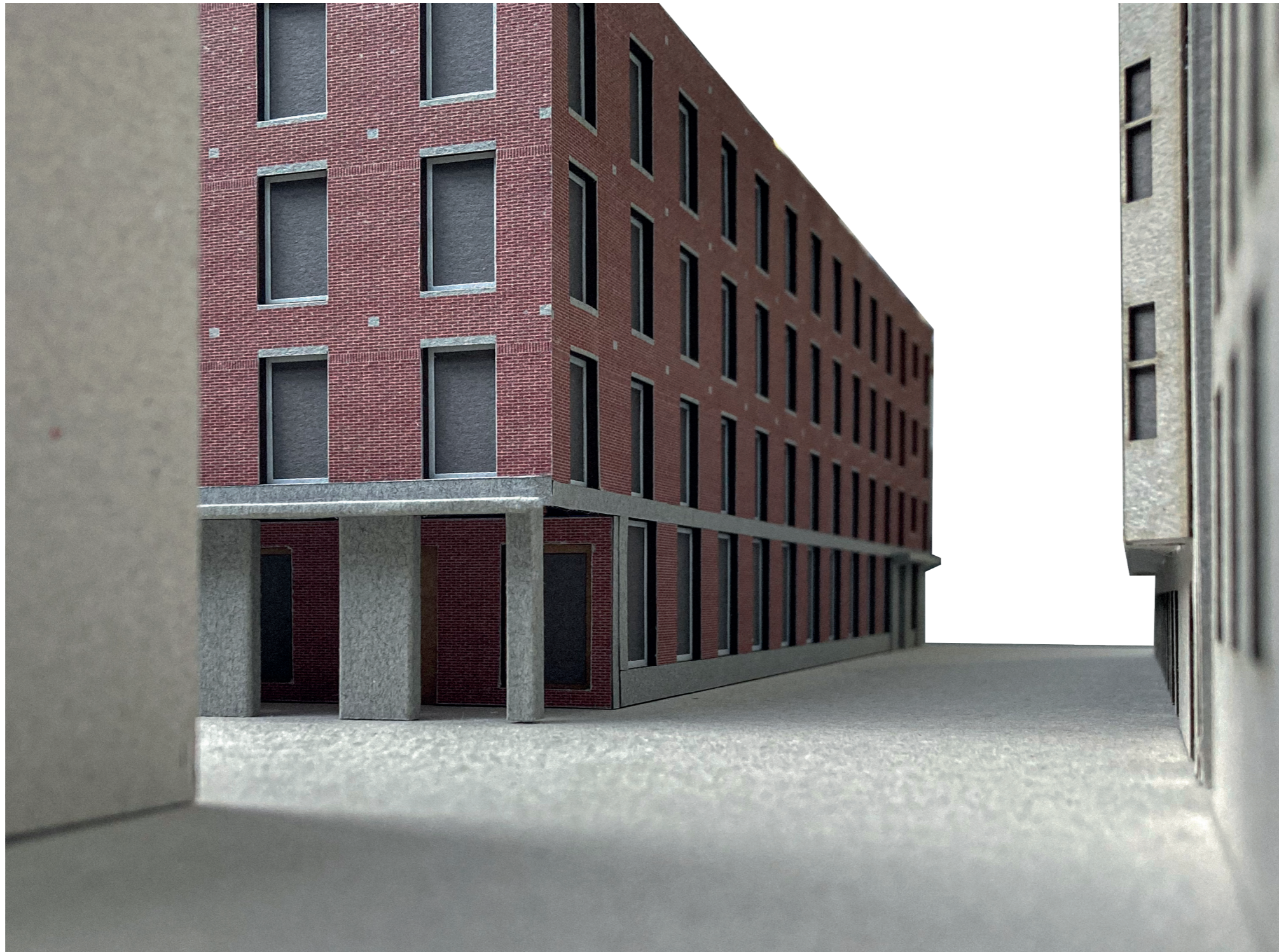
# entrance

*the entrance to the restaurant and interior of the block along the singelgracht*



# entrance

*the entrance to the restaurant and interior of the block along the singelgracht*



# entrance

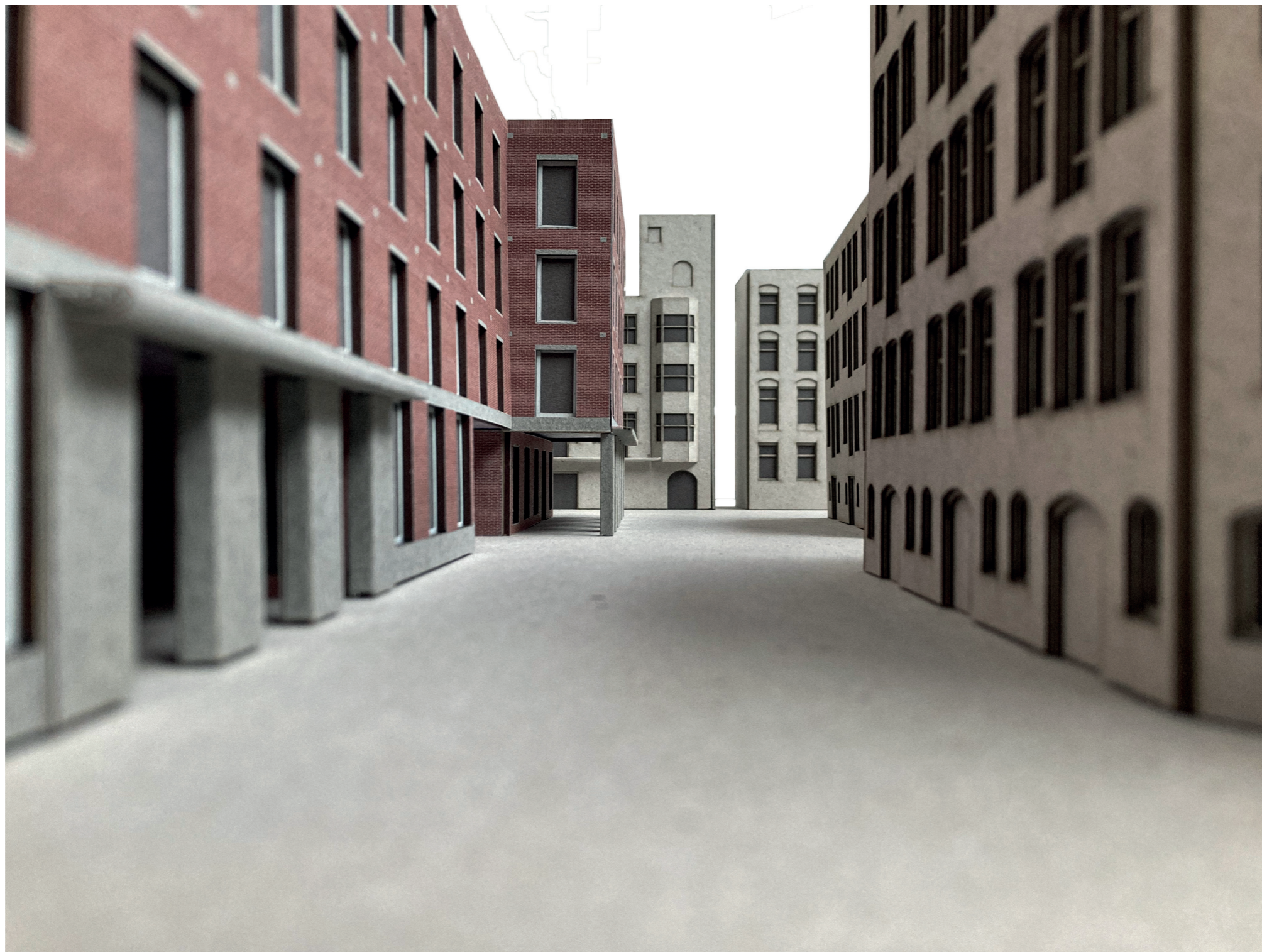
*entrance to the courtyard viewed from between marnixstraat 200 and 210*

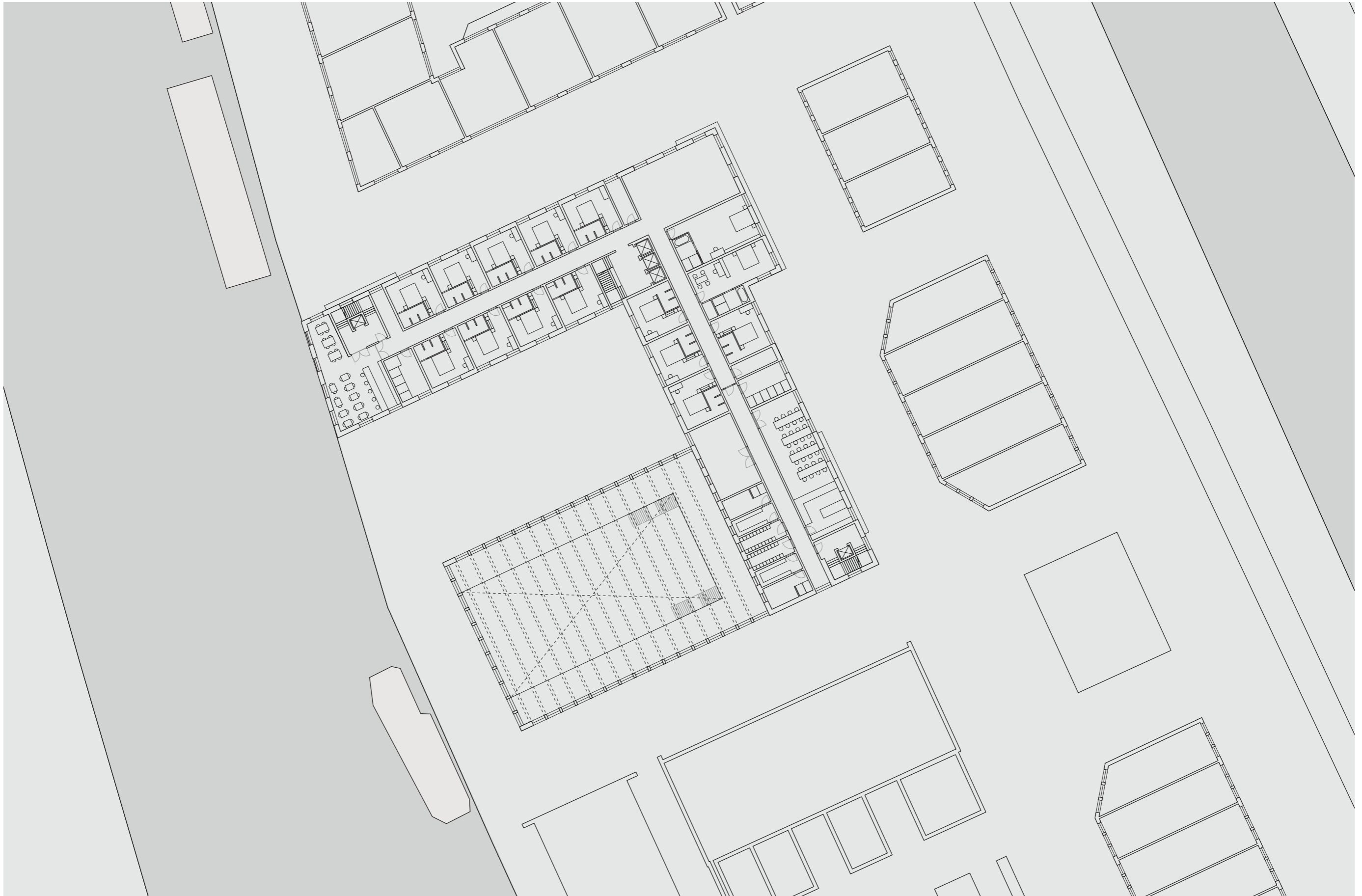




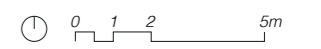
# entrance

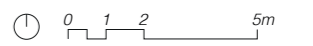
*the entrance of the market hall and hotel*



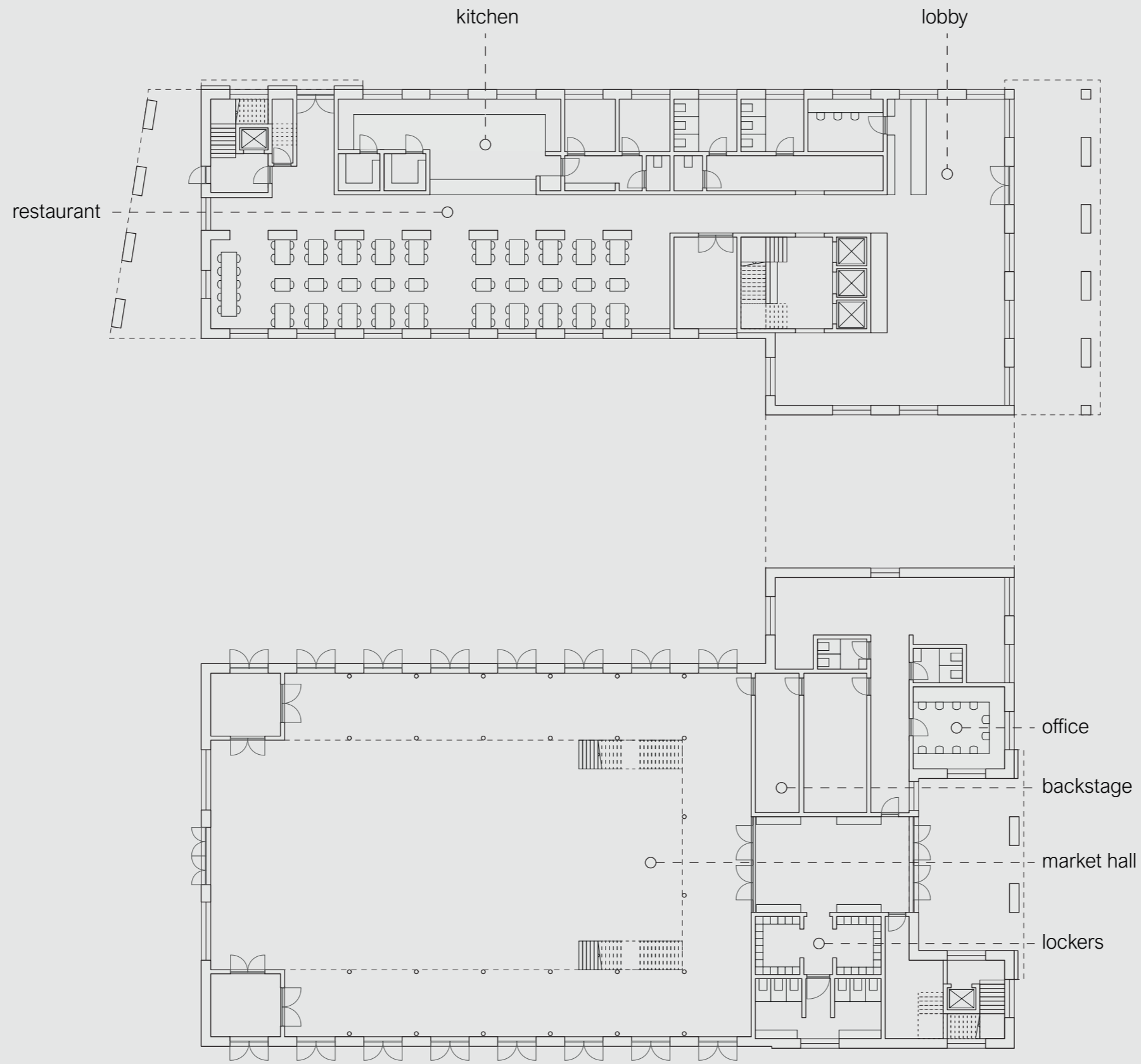


first floor

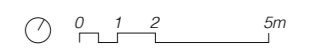




second and third floors



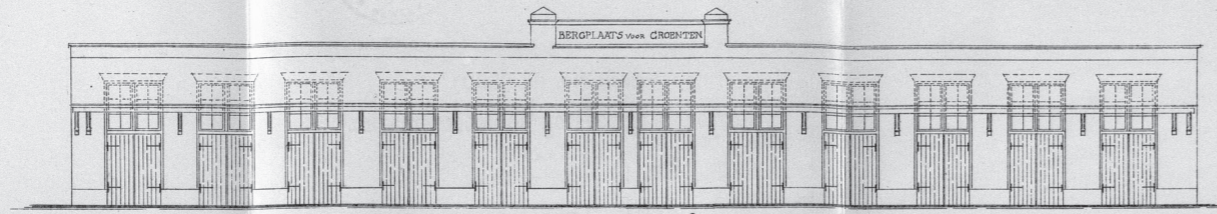
ground floor



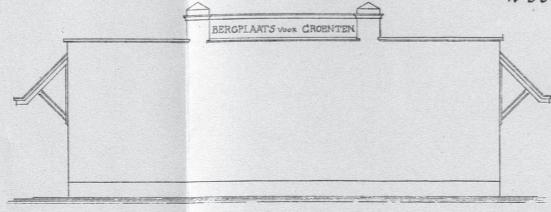
1900

Gemeente Amsterdam.  
Steenen bergloods op de Groentemarkt.

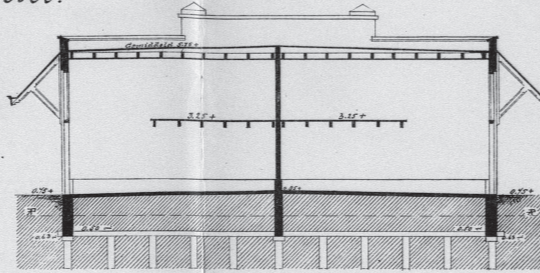
Behoort bij beek 26:41.  
1 Plaats.



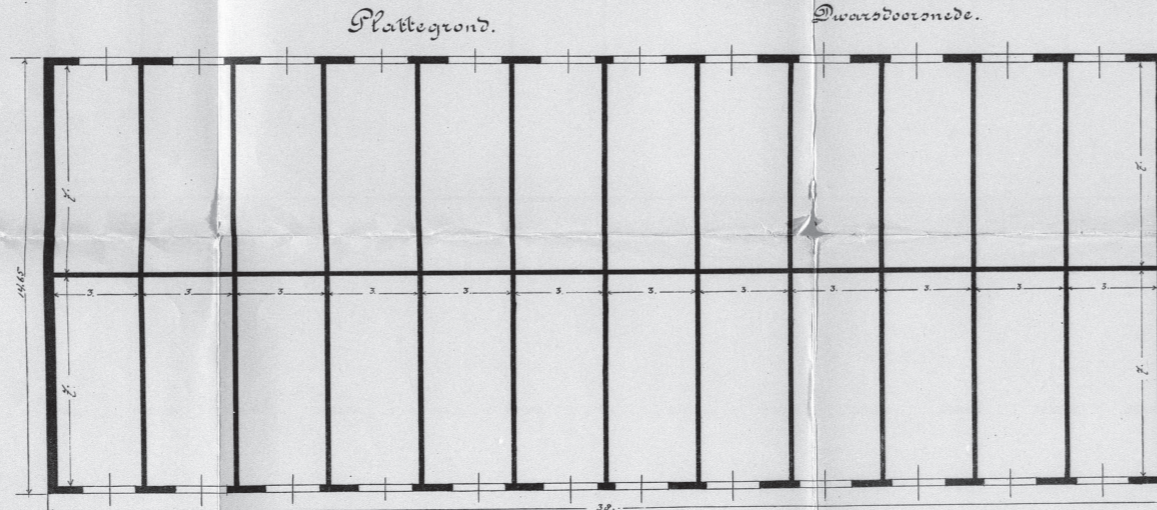
Voorgevel.



Lijzevel.

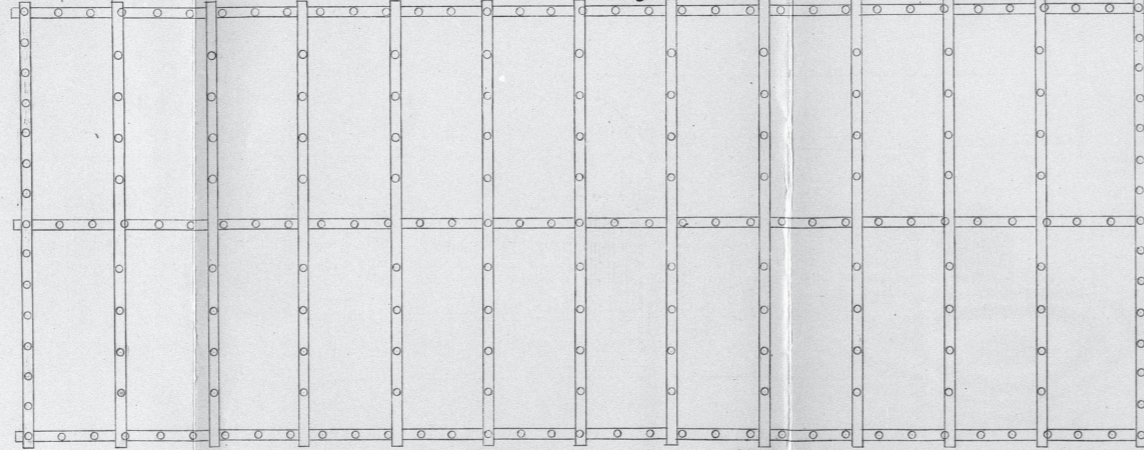


Dwarsdoorsnede.

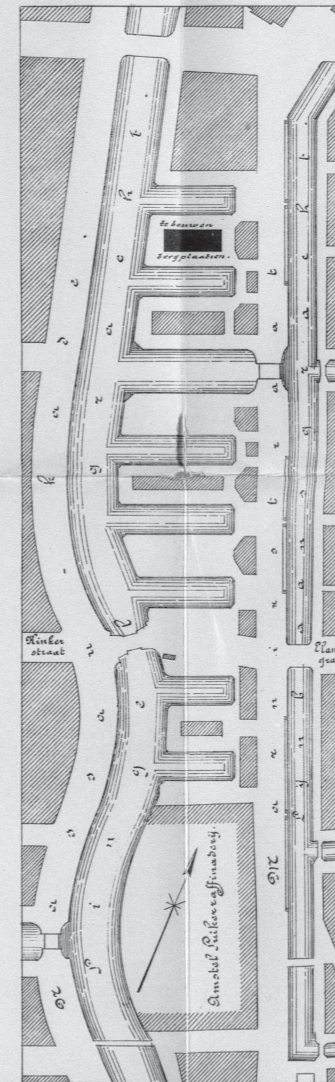


Plattegrond.

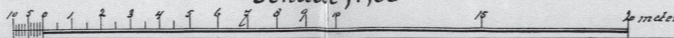
Fondceering.



Situatie 1:2000.



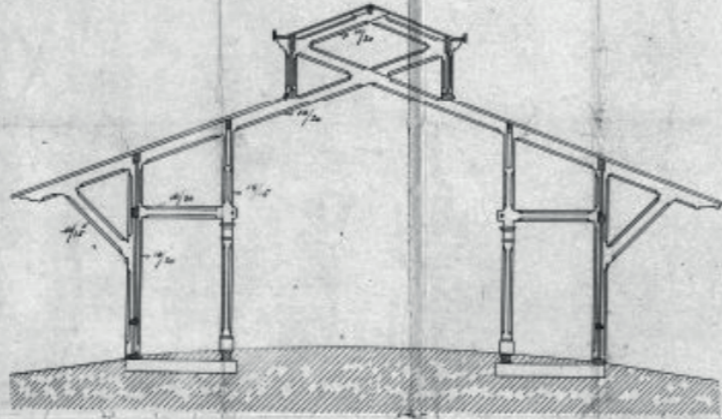
Schaal 1:100



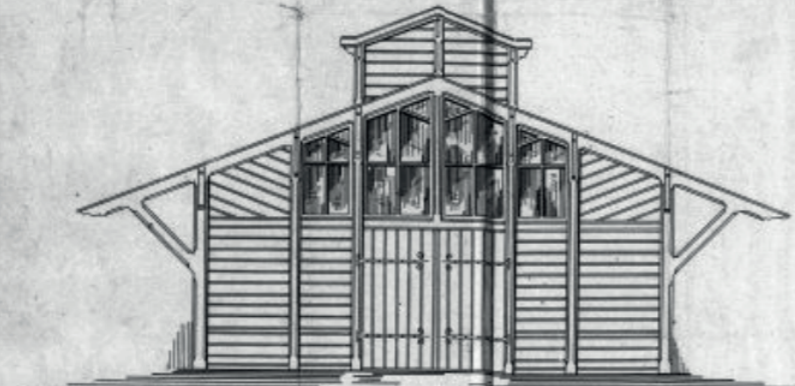
AMSTERDAM

Veringelkaat 1/2 Tuinder Vereniging  
Amsterdam

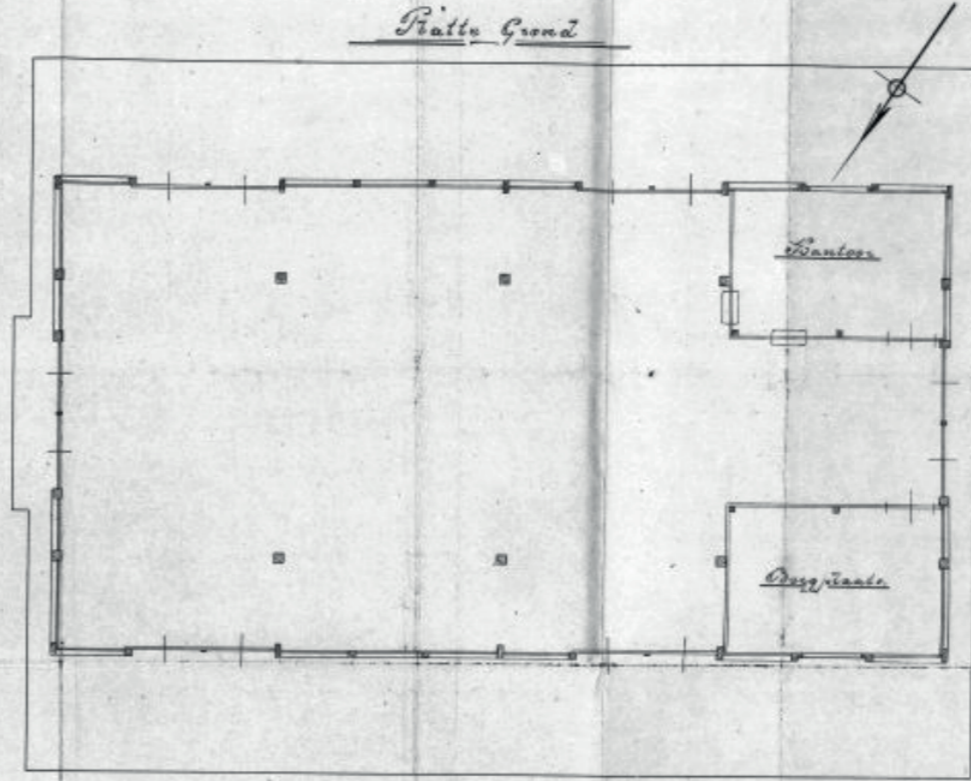
Samenstelling van een der Spanten



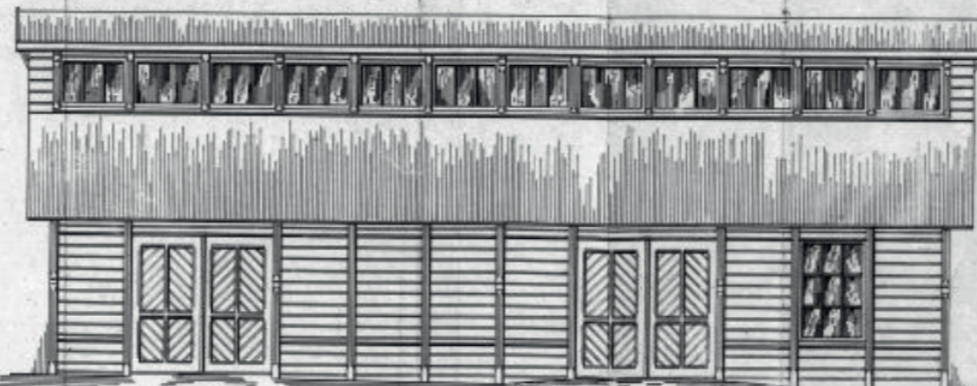
Voer en Sijtergevel



Platte Grond



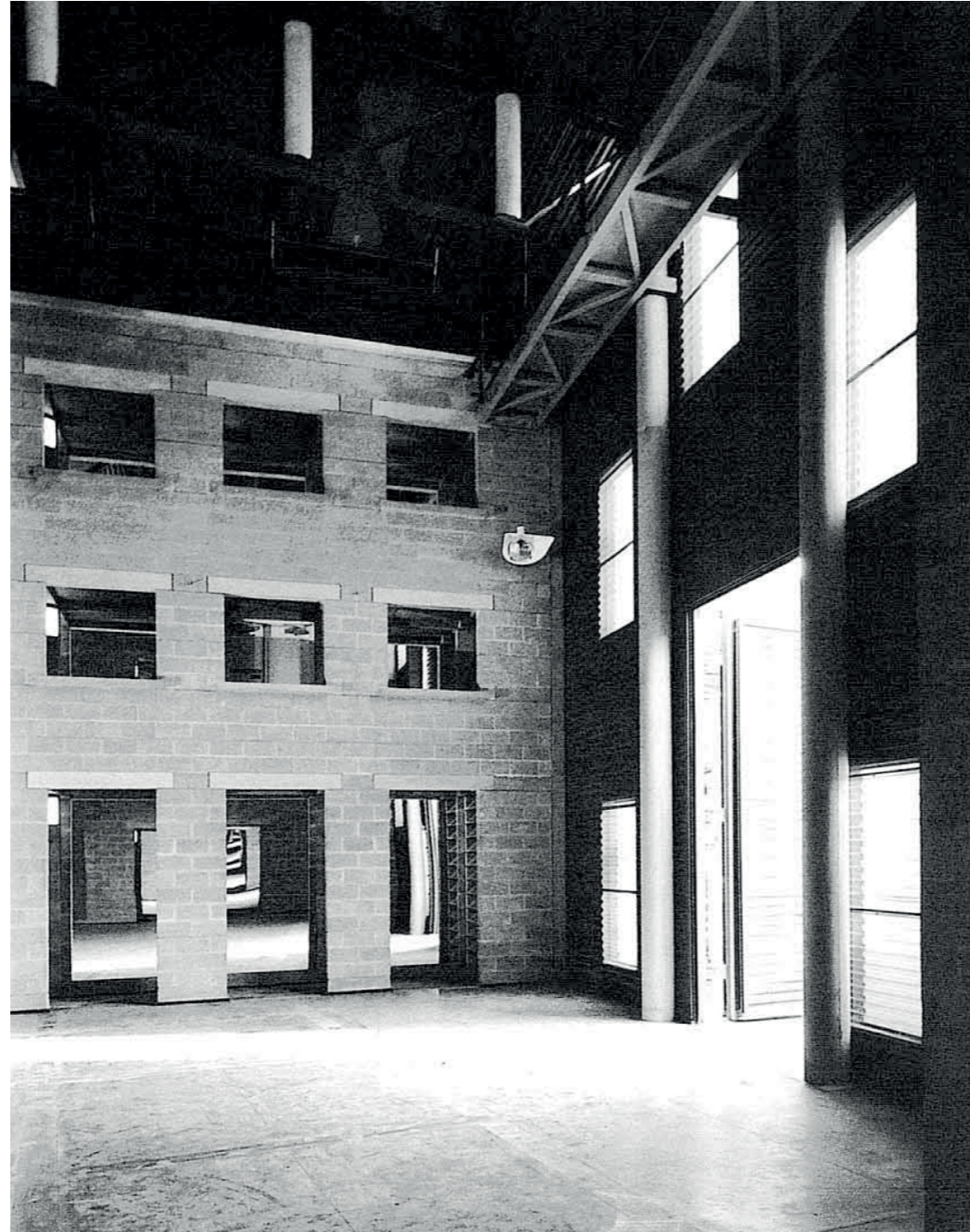
Zijgevel



*W. J. J. J. J.*

*Schaatsma*

AMSTERDAM



Florian Beigel - half moon theatre



Jean Prouve - maison de peuple



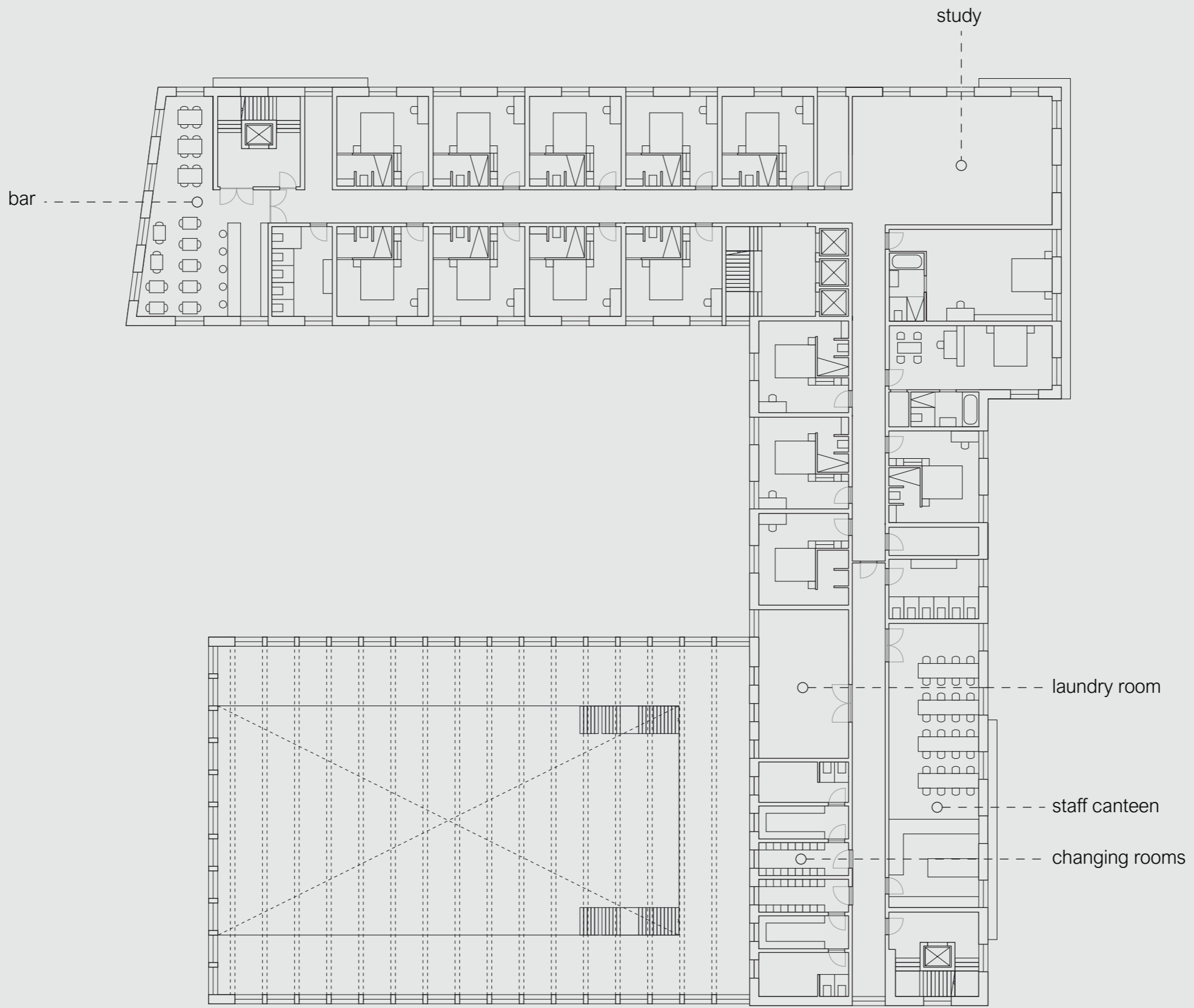


Nicolas Lansdorp - de centrale markthal

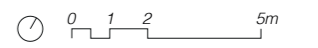
# market hall

*multi purpose hall constructed of simple materials*



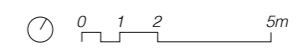


first floor





second and third floors



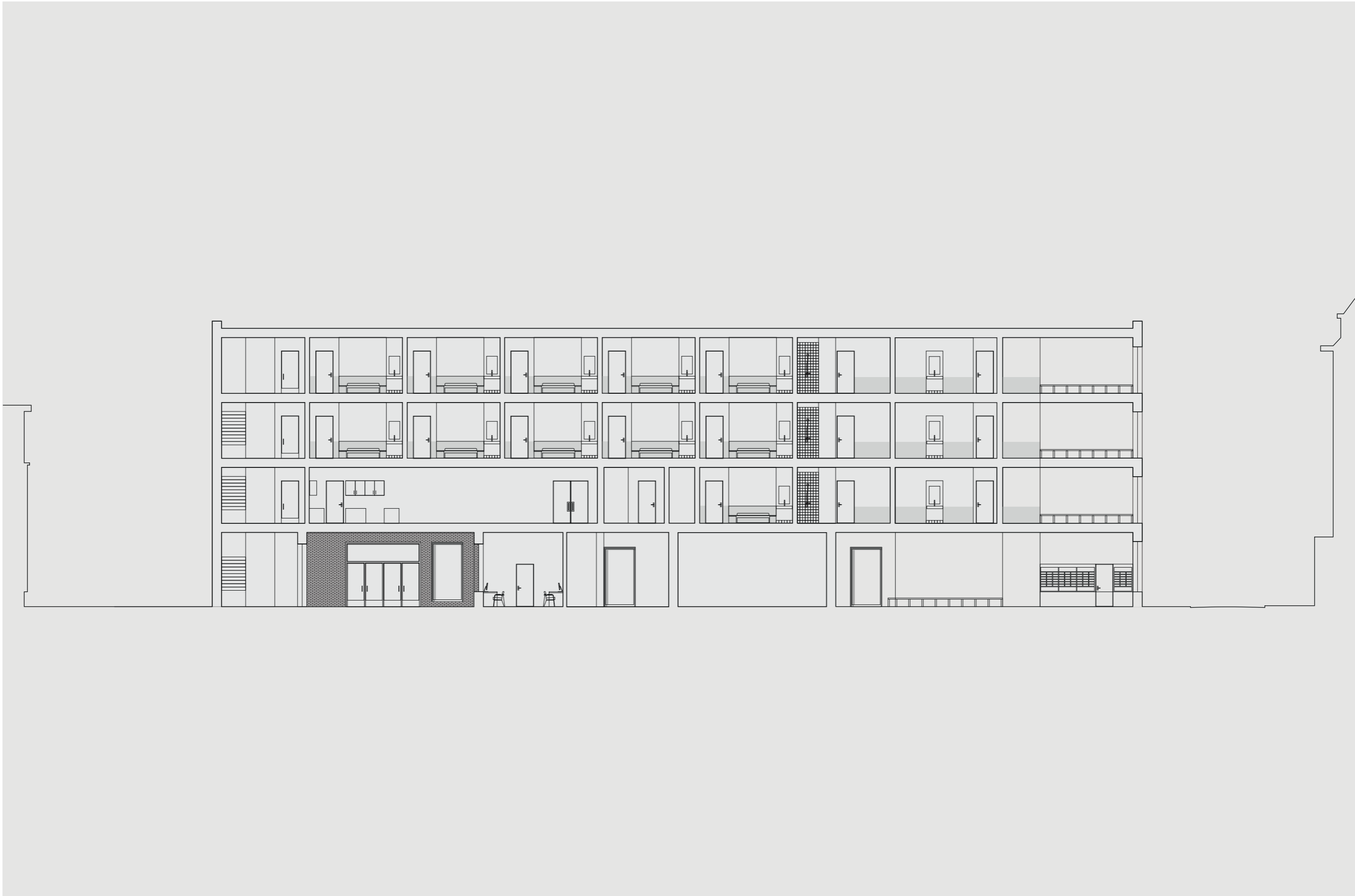


Nicolas Dorval Bory - un voyage, pas une destination

# the city block

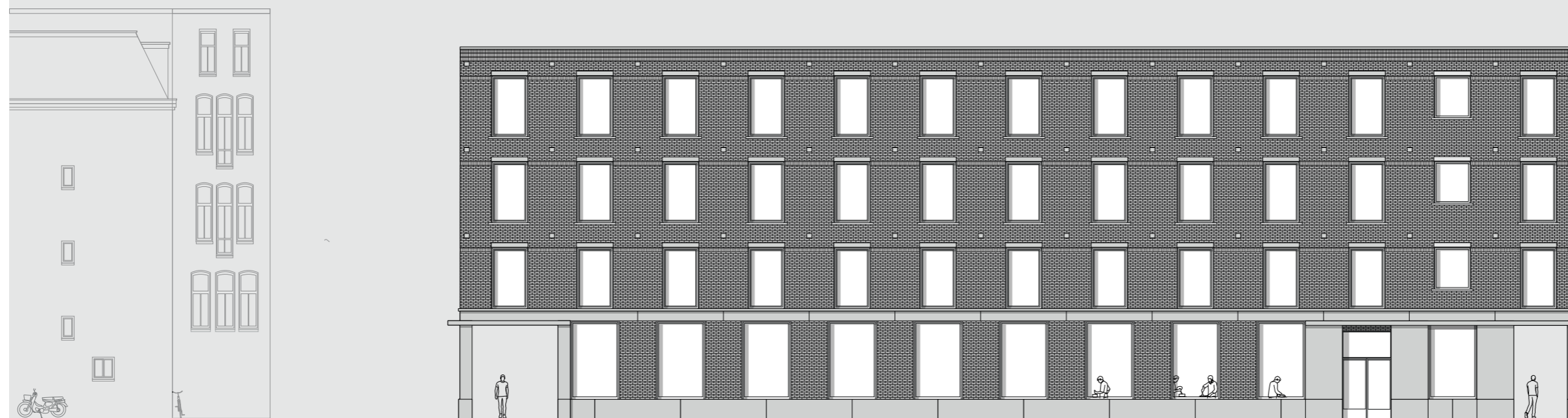
*reconstruction of the old market hall and the construction of a hotel*

viewed through elevations and sections



section A-A

0 1 2 5m



elevation from groenmarktade (north)

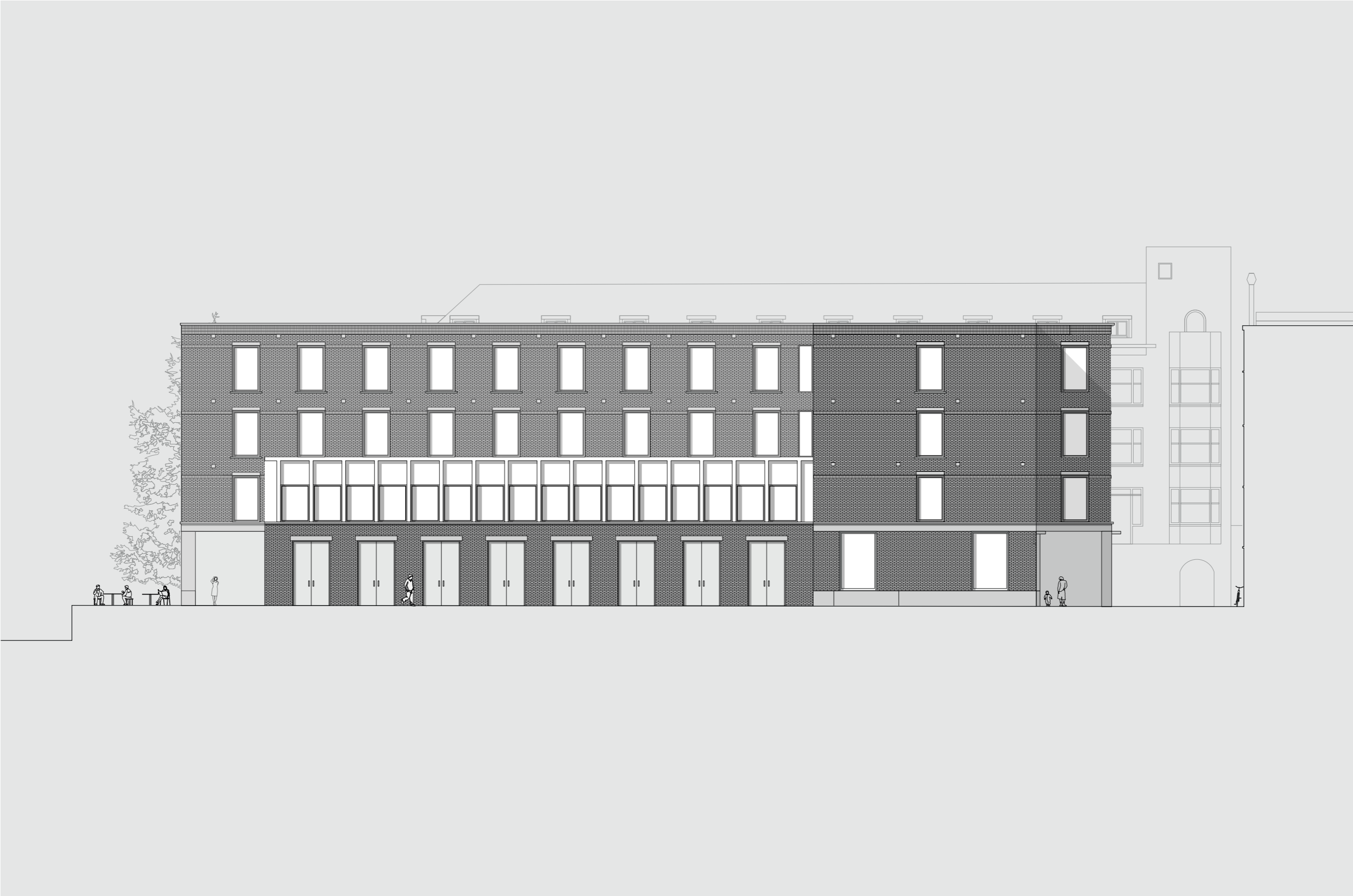
0 1 2 5m





elevation from marnixstraat (east)

0 1 2 5m



elevation from substation (south)

0 1 2 5m



elevation from singelgracht (west)

0 1 2 5m

**courtyard**  
*rhythm is repeated throughout the facade*





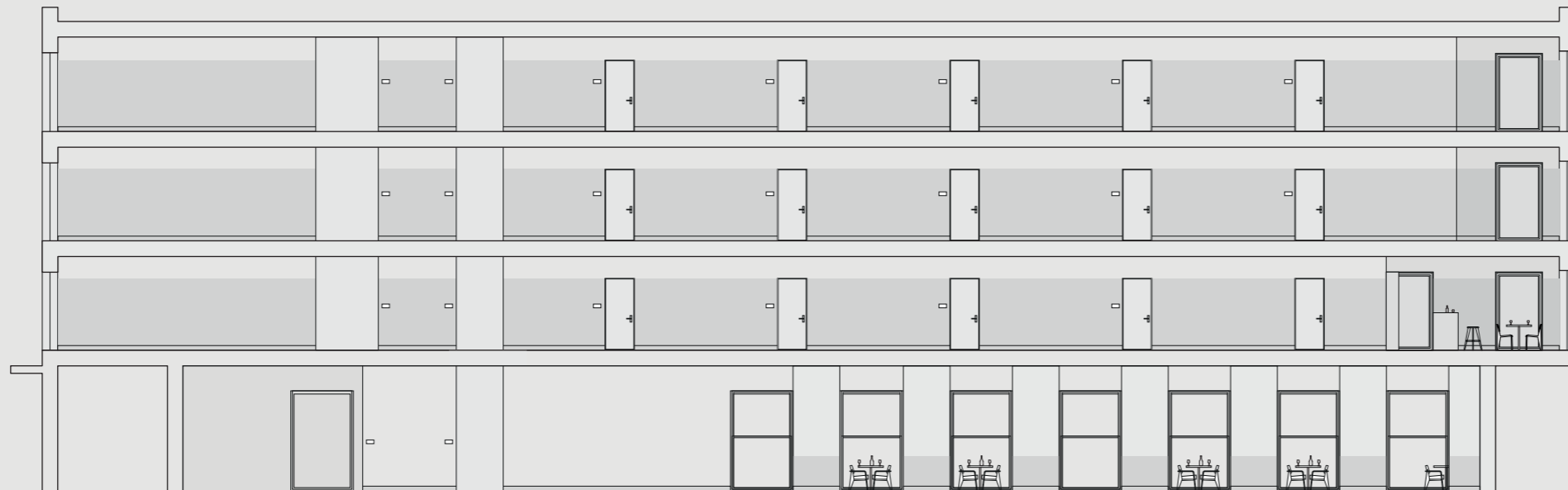
section B-B

0 1 2 5m



section C-C

0 1 2 5m



0 1 2 5m

section D-D

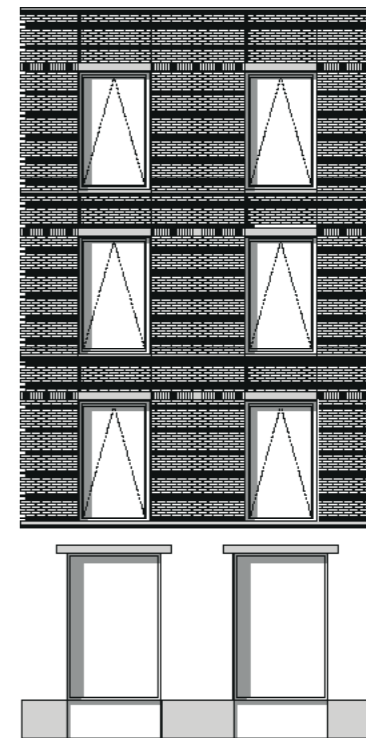
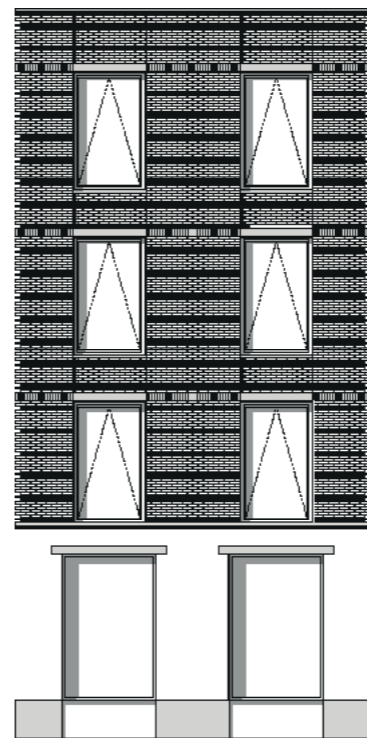
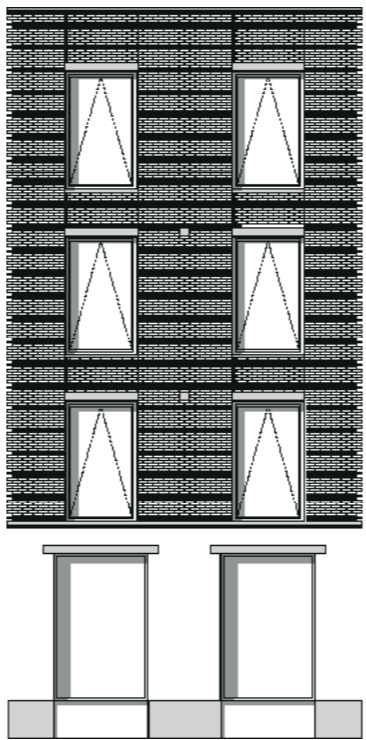
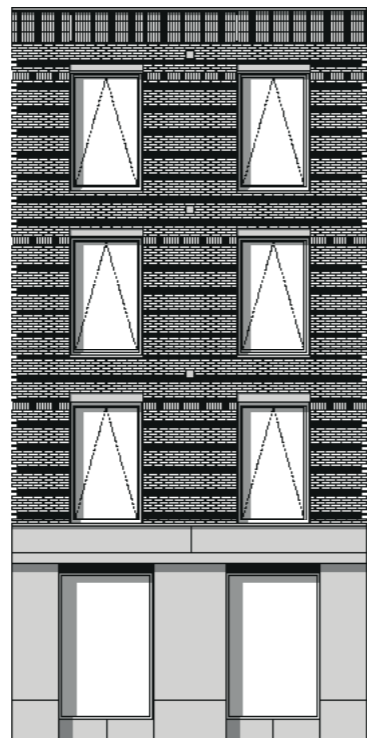
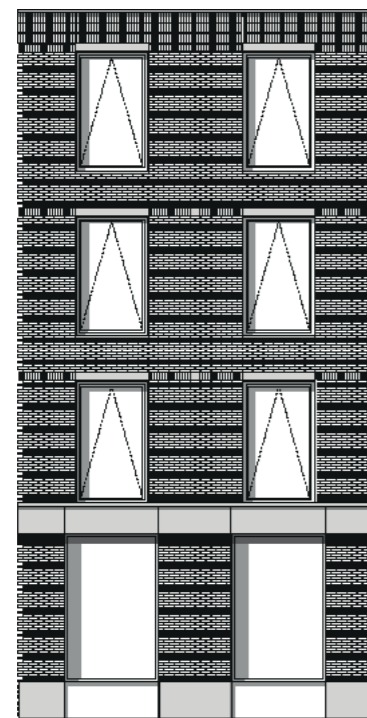
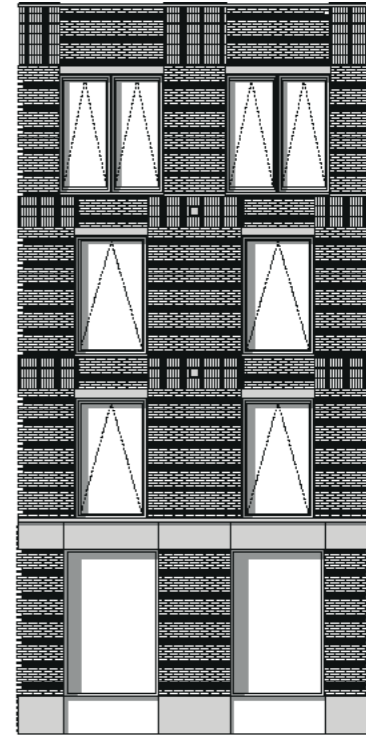
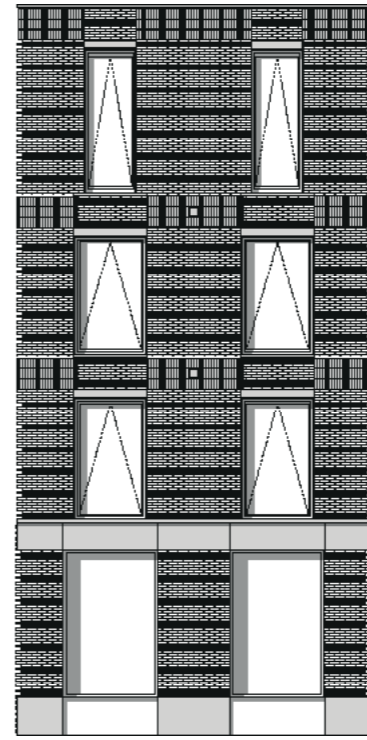
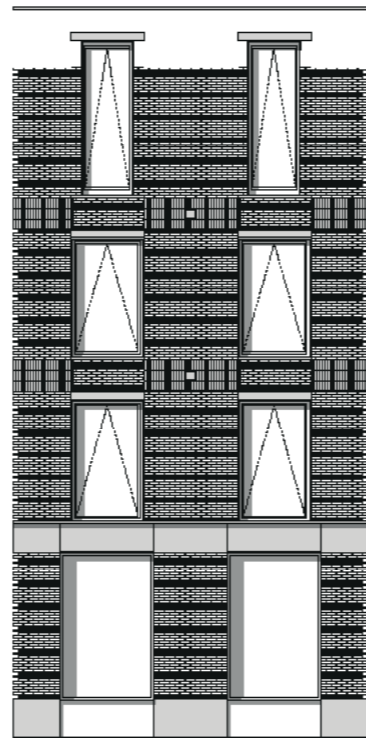
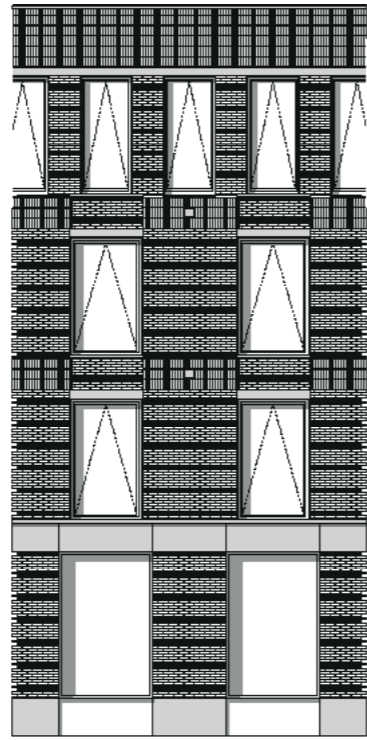
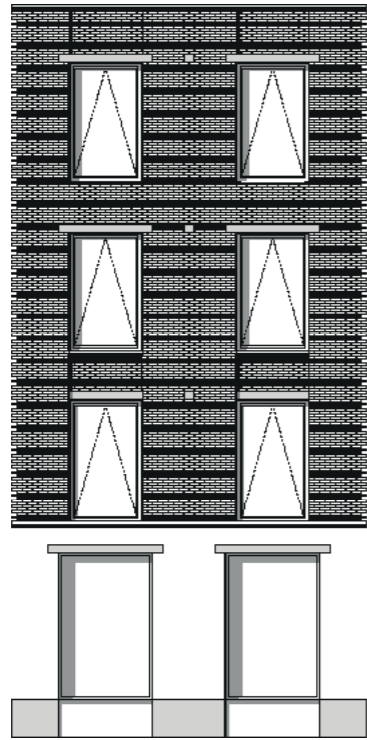
# materiality

plasticity through walls





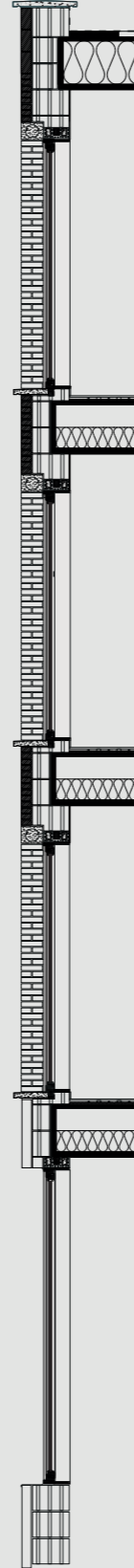
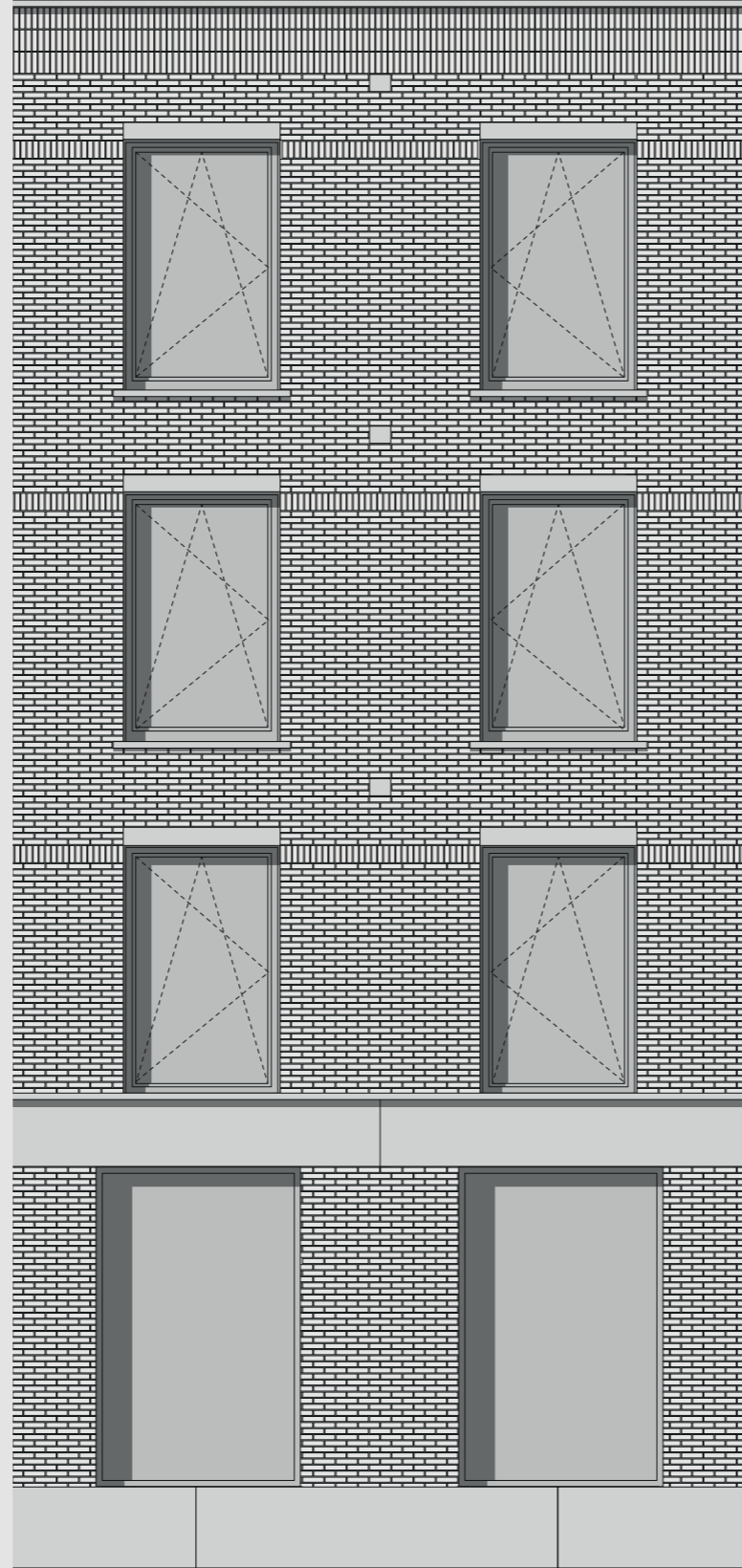
marnixstraat 200



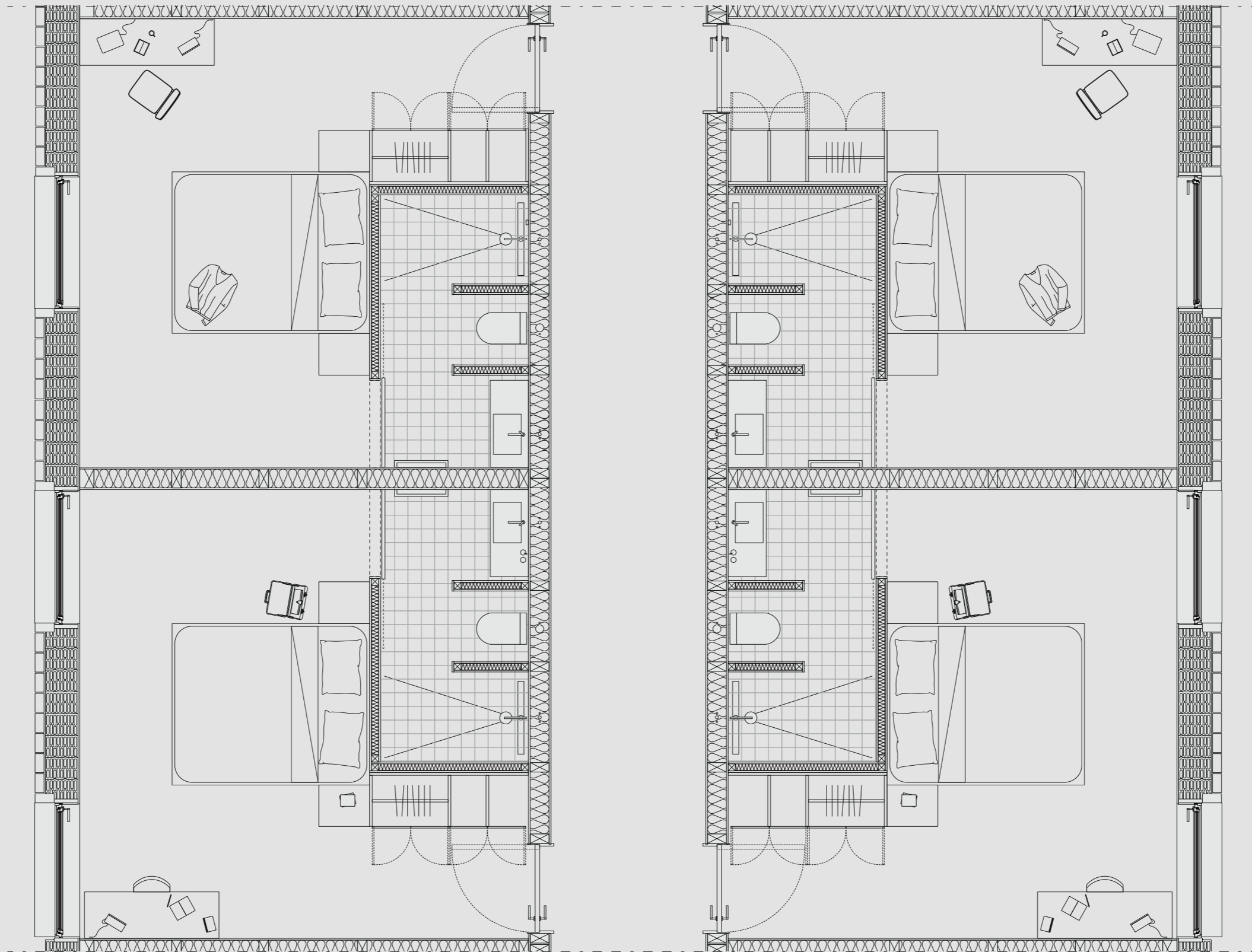
# facade

*the facade uses clues from its surroundings to create a modern and recognisable facade*





0 20 40 100cm

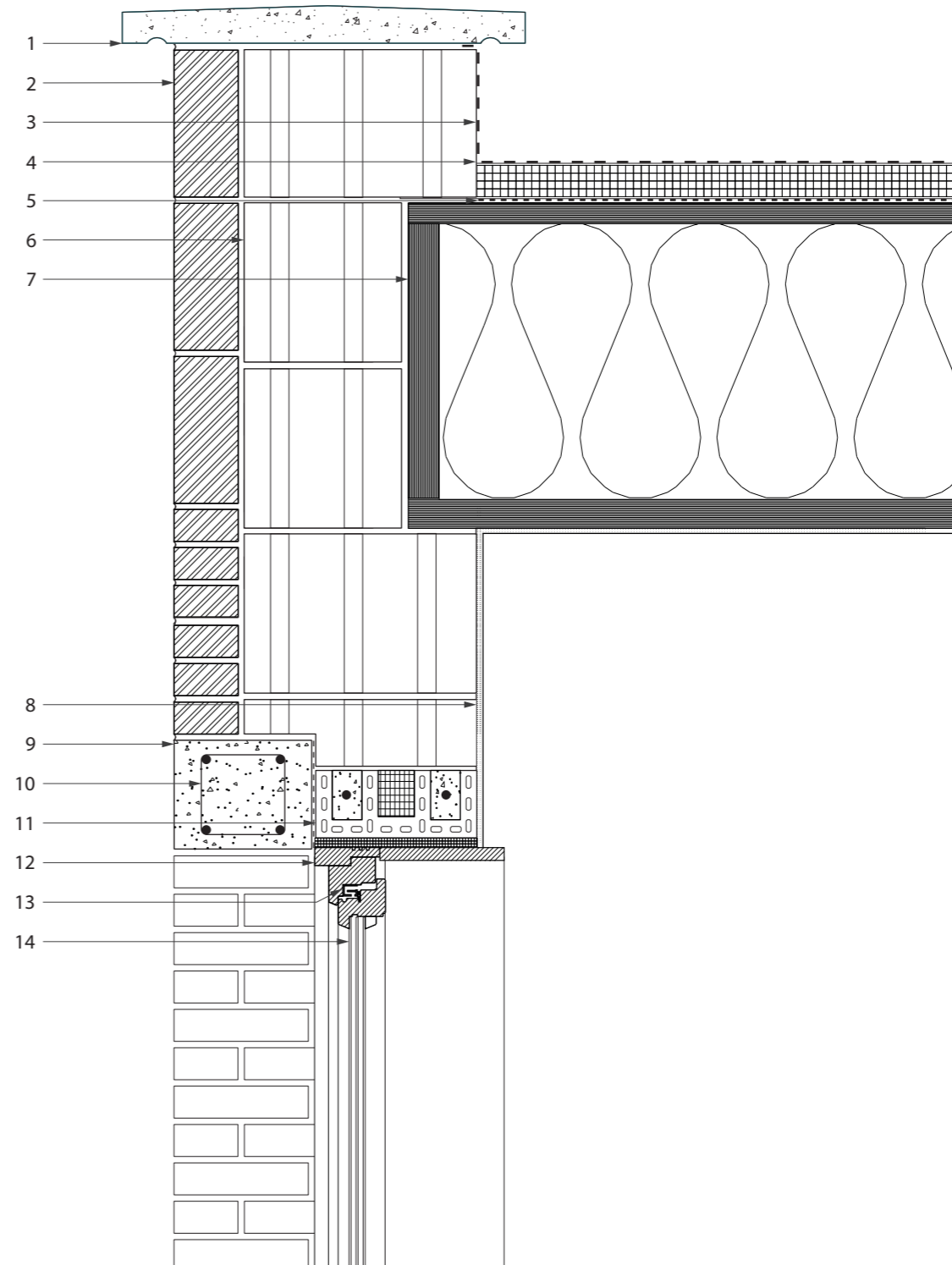


# DETAIL 1

vertical roof detail

scale 1:10

- 1 concrete eave
- 2 WasteBasedBrick® Raw orange firing brick (210x100x50 mm)
- 3 waterproof foil
- 4 hard insulation
- 5 damp-open foil
- 6 365 T7 MW insulated porotherm block (248x365x249 mm)
- 7 kerto ripa insulated roof element (13000x5000x500 mm)
- 8 stucco finish
- 9 precast reinforced concrete lintel (210x180x1970 mm)
- 10 rebar
- 11 reinforced insulated porotherm lintel (265x113x1750 mm)
- 12 wooden window frame
- 13 trickle vent
- 14 triple-glazed window HR++

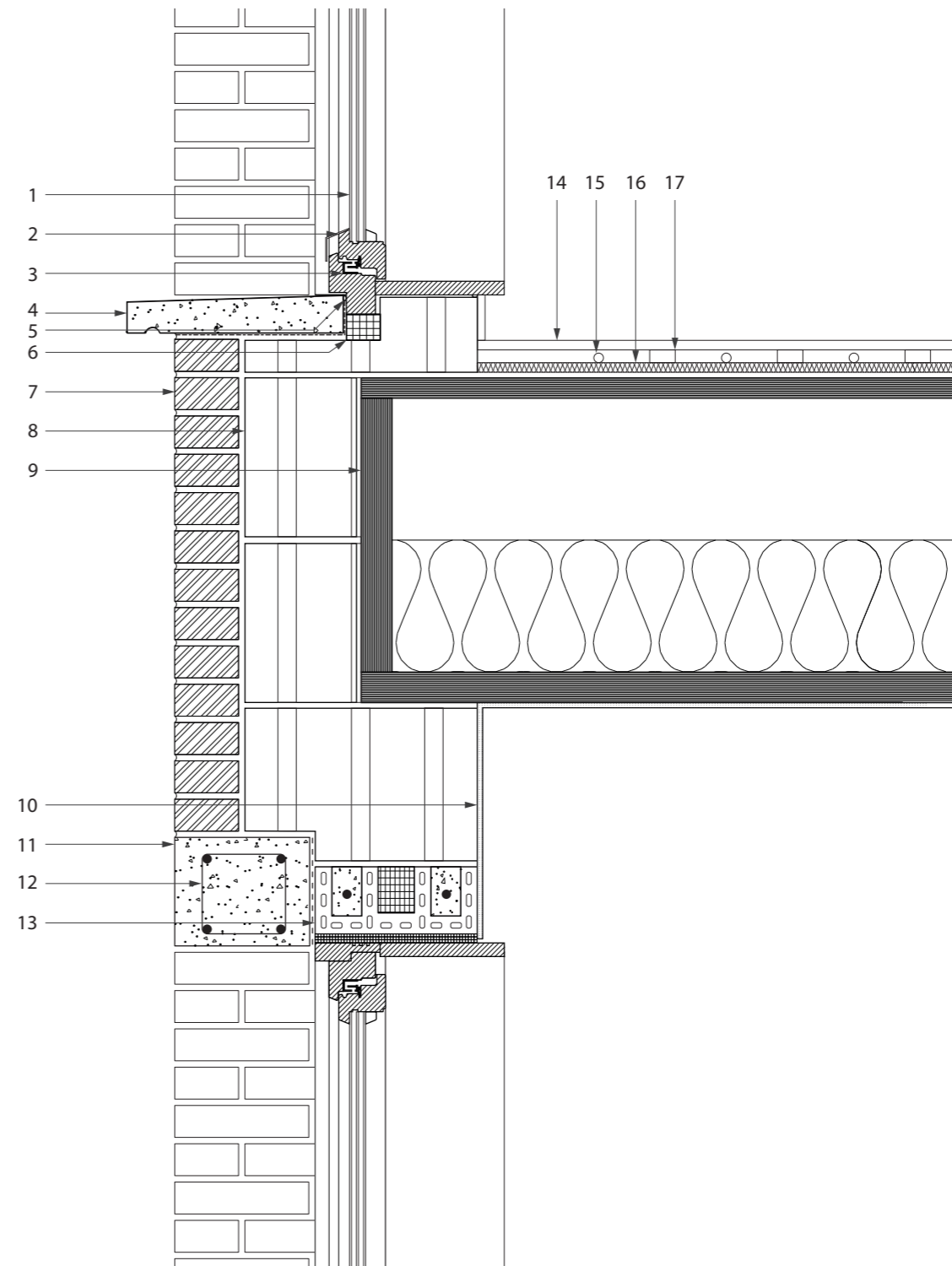


## DETAIL 2

vertical wall/floor joint detail

scale 1:10

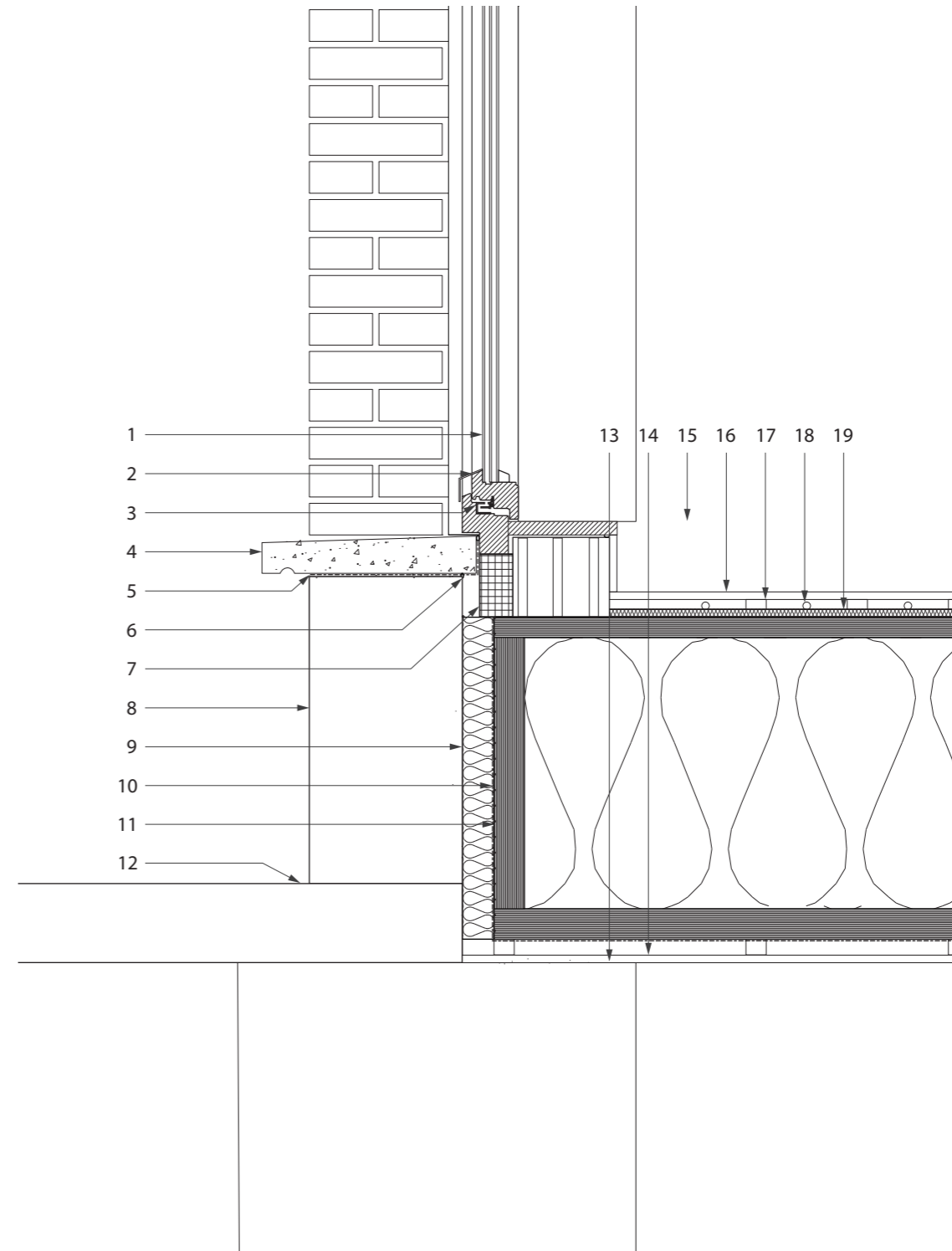
- 1 triple-glazed window HR++
- 2 wooden window frame
- 3 trickle vent
- 4 precast concrete windowsill
- 5 waterproof taping
- 6 hard insulation
- 7 WasteBasedBrick® Raw orange firing brick (210x100x50 mm)
- 8 365 T7 MW insulated porotherm block (248x365x249 mm)
- 9 kerto ripa insulated floor element(13000x5000x500 mm)
- 10 stucco finish
- 11 precast reinforced concrete lintel (210x180x1970 mm)
- 12 rebar
- 13 reinforced insulated porotherm lintel (265x113x1750 mm)
- 14 carpet floor finish with cork fill (12 mm)
- 15 floor heating pipes (ø12 mm)
- 16 contact insulation (12 mm)
- 17 wooden floor batten



### DETAIL 3

vertical column detail  
scale 1:10

- 1 triple-glazed window HR++
- 2 wooden window frame
- 3 trickle vent
- 4 precast concrete windowsill
- 5 waterproof taping
- 6 waterproof sealant
- 7 hard insulation
- 8 concrete lintel
- 9 soft insulation
- 10 waterproof taping
- 11 kerto ripa insulated floor element(13000x5000x500 mm)
- 12 in situ concrete canopy
- 13 in situ concrete column
- 14 wooden finishing
- 15 wooden windowsill
- 16 carpet floor finish with cork fill (12 mm)
- 17 wooden batten (12 mm )
- 18 floor heating pipes (ø12 mm)
- 19 contact insulation (12 mm)

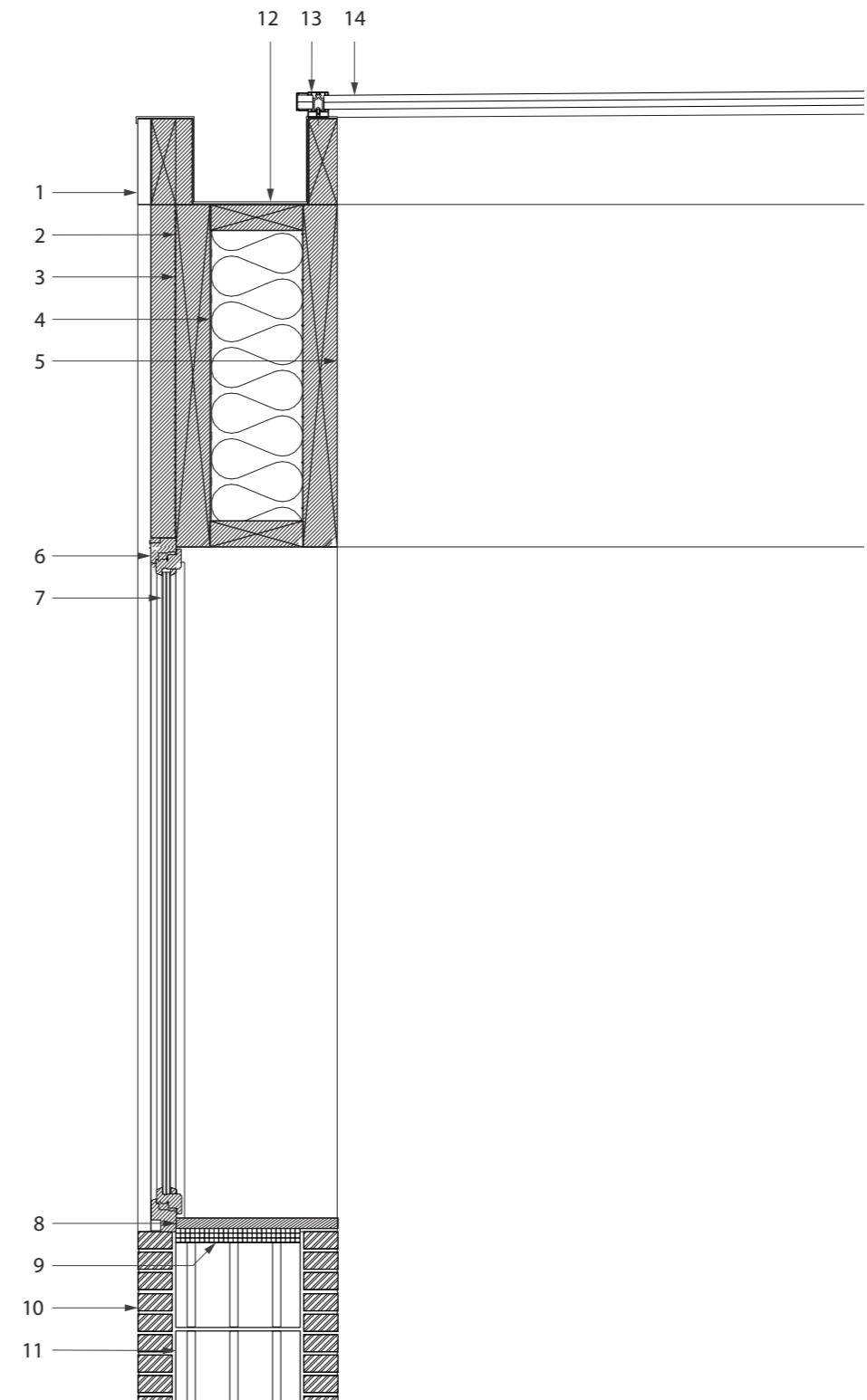




## DETAIL 4

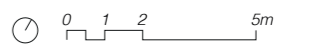
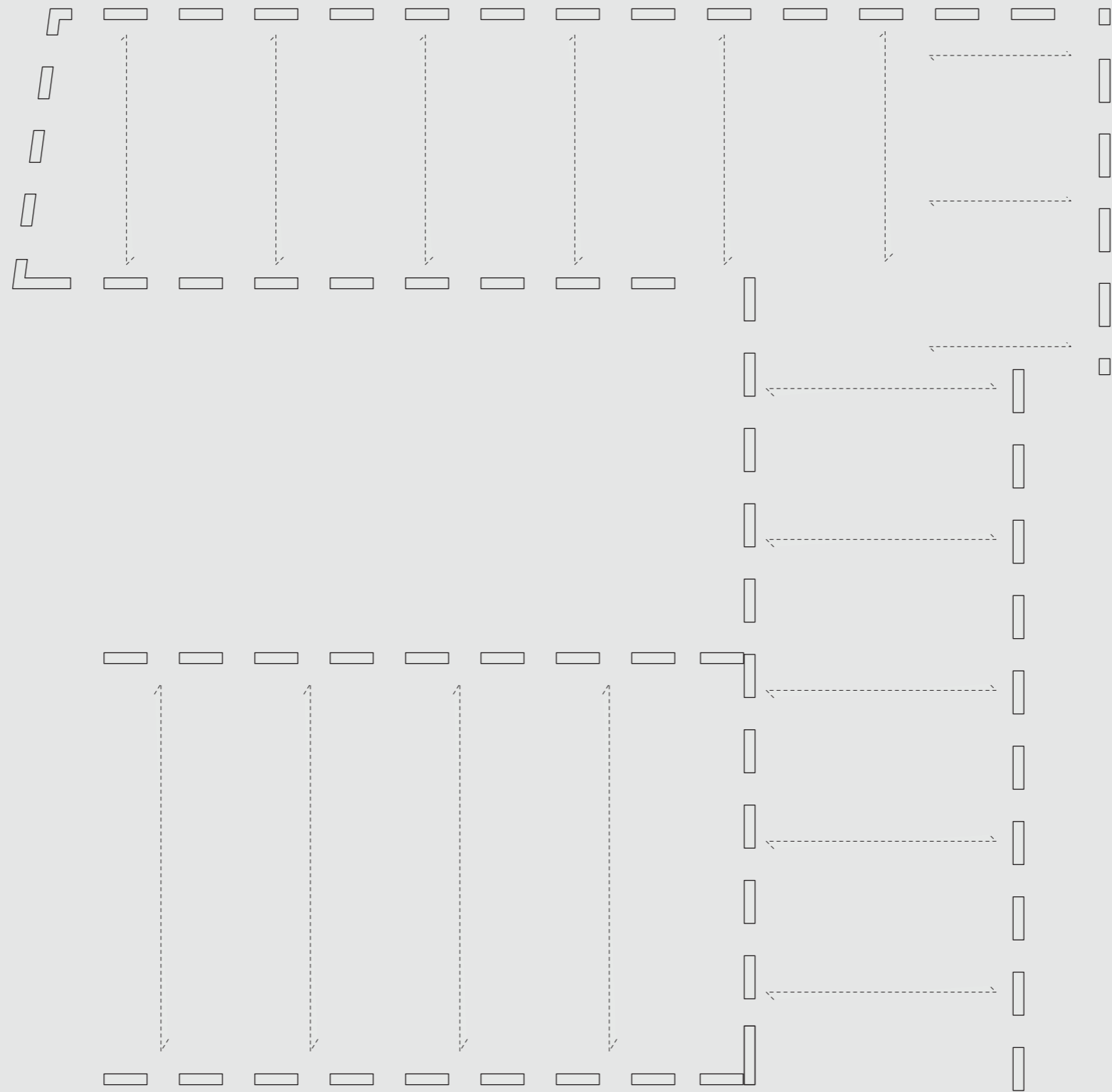
vertical column detail  
scale 1:20

- 1 wooden exterior batten
- 2 CLT beam
- 3 waterproof taping
- 4 insulation
- 5 CLT beam (100x1200x2000mm)
- 6 wooden window frame
- 7 HR ++ glass
- 8 wooden window sill
- 9 hard insulation
- 10 WasteBasedBrick® Raw orange firing brick (210x100x50 mm)
- 11 365 T7 MW insulated porotherm block (248x365x249 mm)
- 12 aluminium gutter
- 13 aluminium profile
- 14 polycarbonate (40mm)



# **sustainability**

*reuse/recycle*

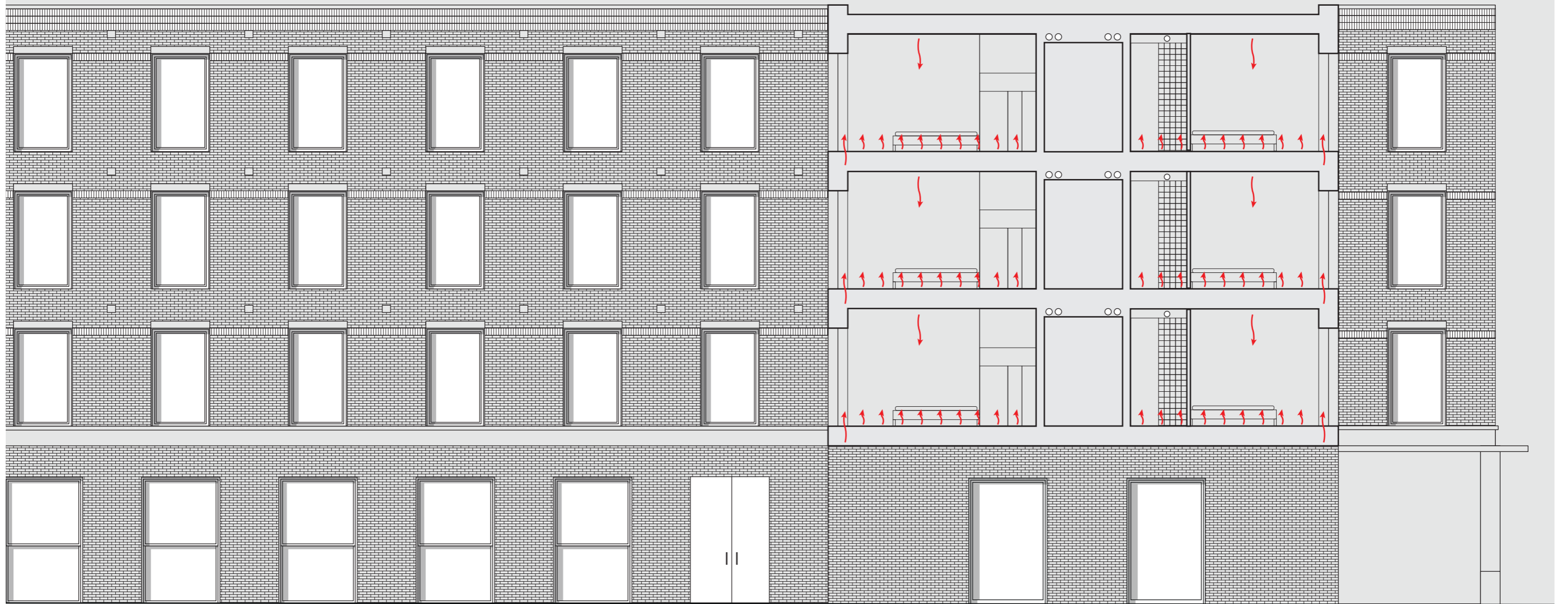


loadbearing structure



1 2 0 5m

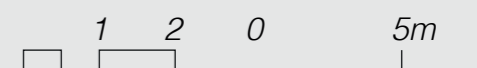
summer situation (cooling)

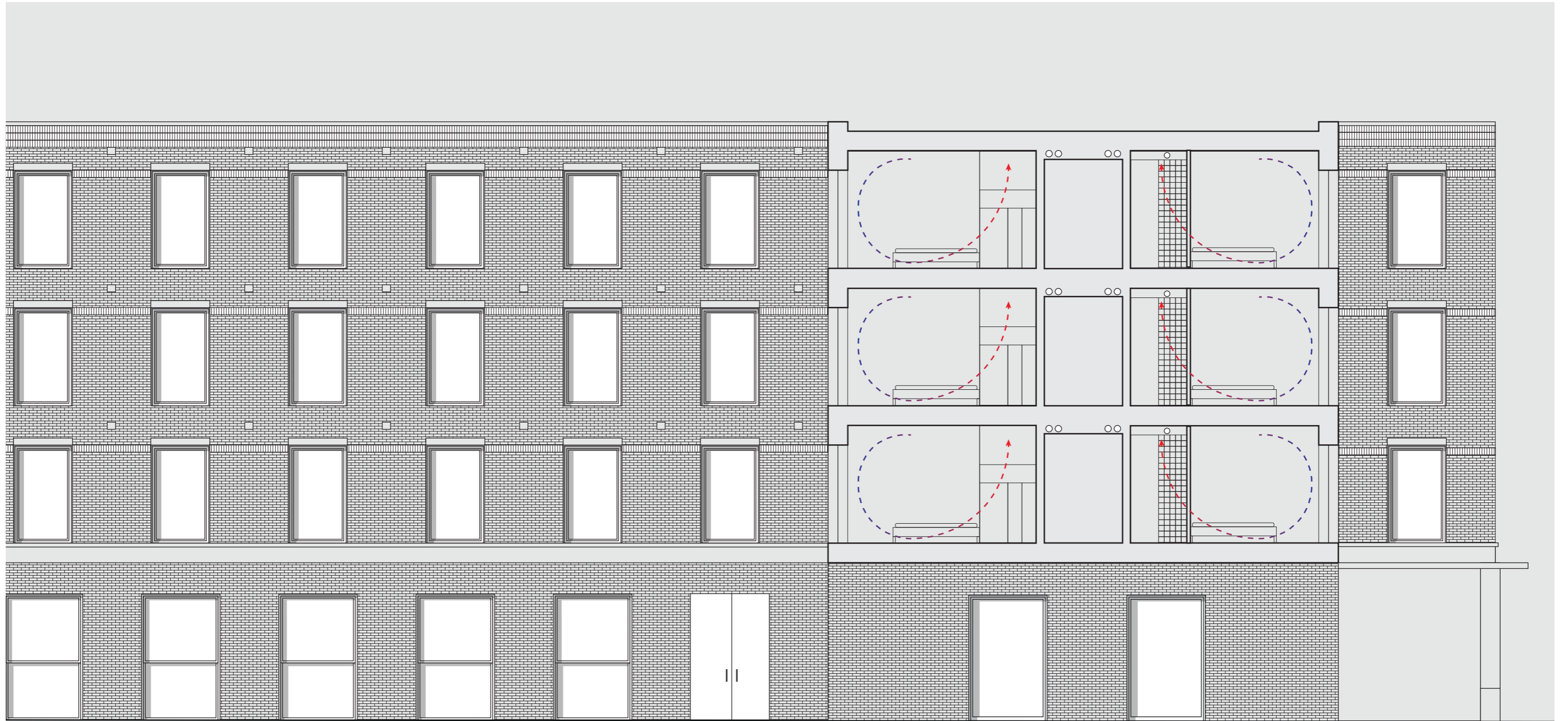


winter situation (heating)



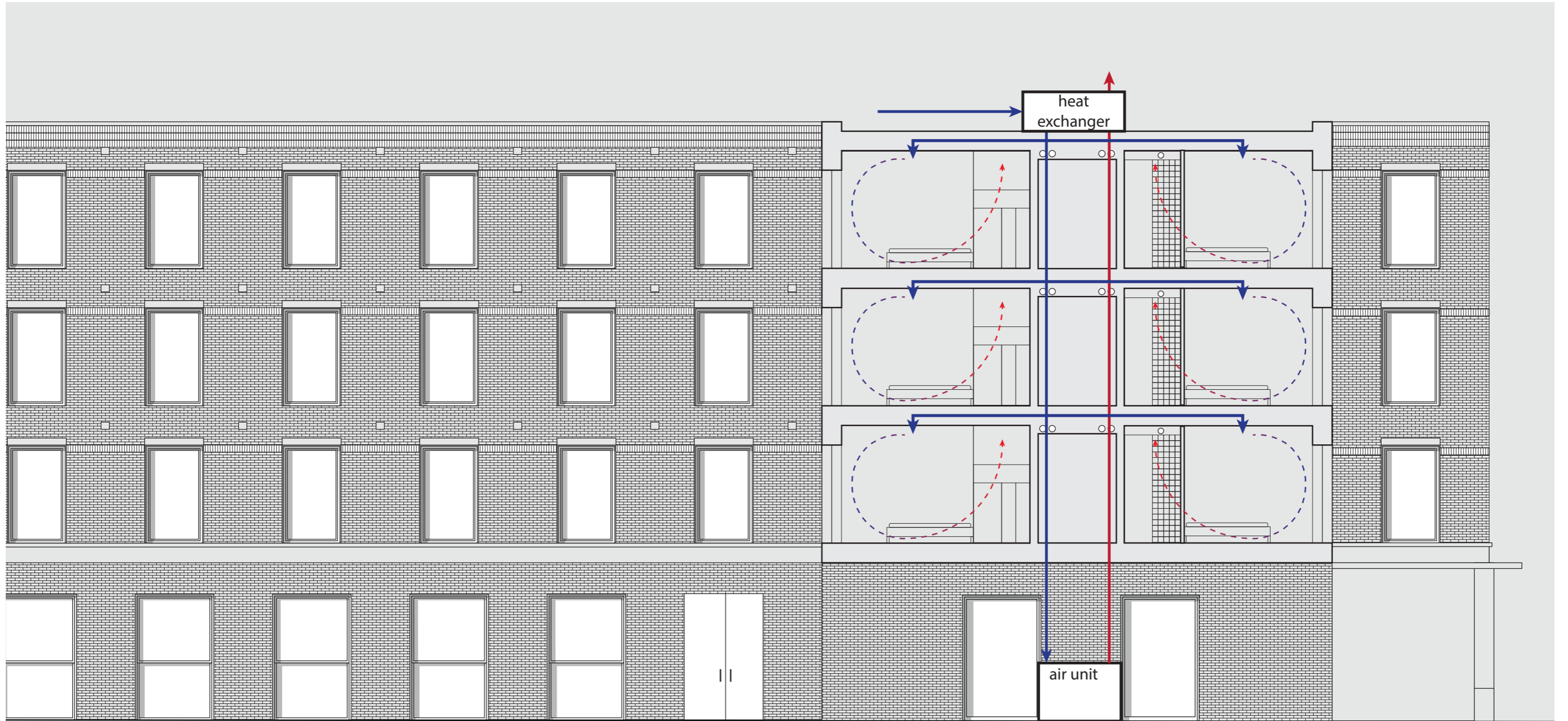
summer situation (fresh air in)





1 2 0 5m

winter situation (heat exchange)



1 2 0 5m

winter situation (heat exchange)



**entrance**  
*clearly marked entrances in concrete*

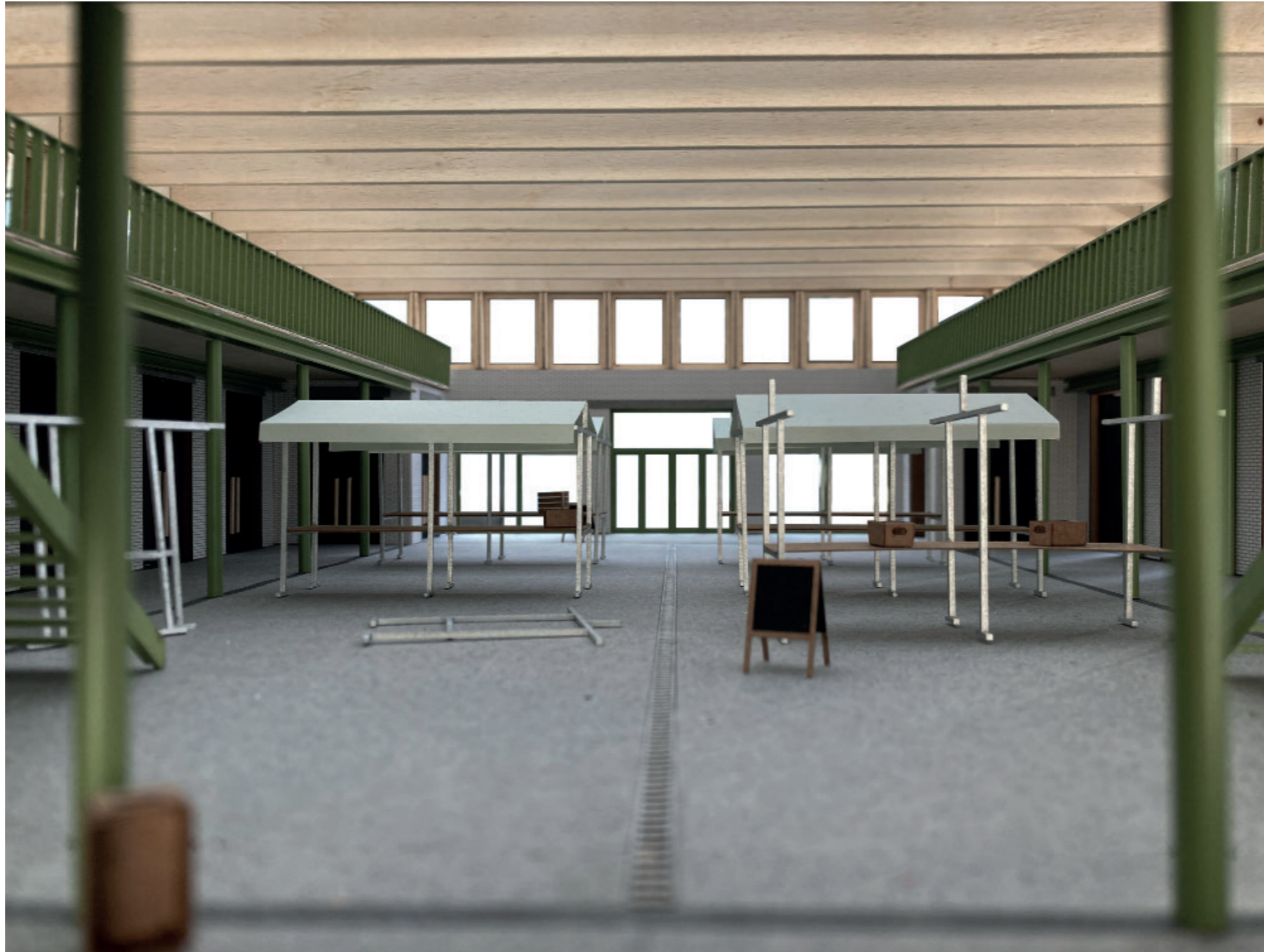


**entrance**  
*clearly marked entrances in concrete*



# the market hall

*a multipurpose hall that can be used for markets*



# the market hall

*or concerts*



# the market hall



# lobby

*robust materials with the use of natural stone*



# corridor

*open ended corridors to let in natural light*



# room

*simple rooms with a focus on materiality*





# room

*simple rooms with a focus on materiality*



# room

*simple rooms with a focus on materiality*



# room

*simple rooms with a focus on materiality*

