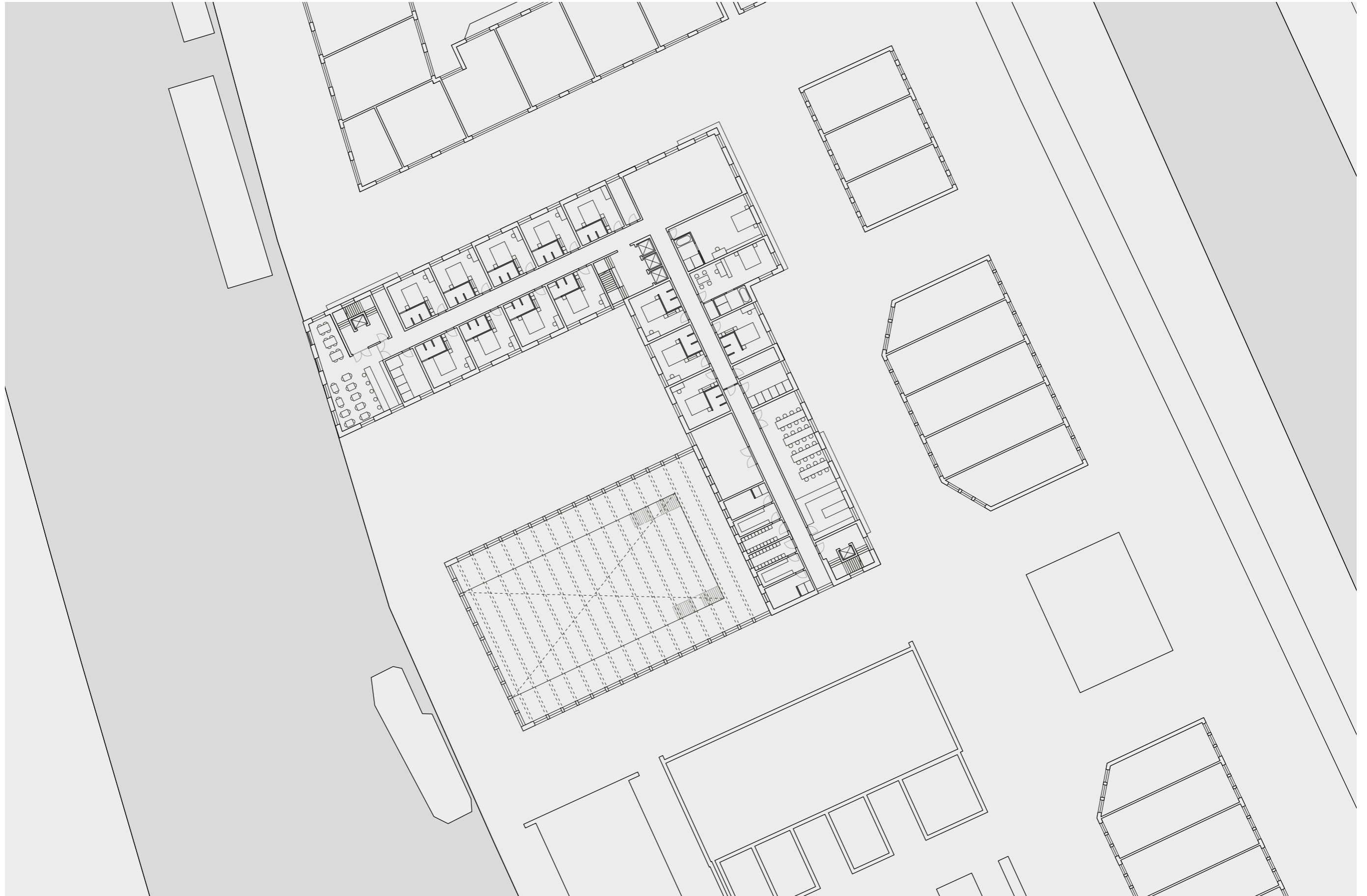
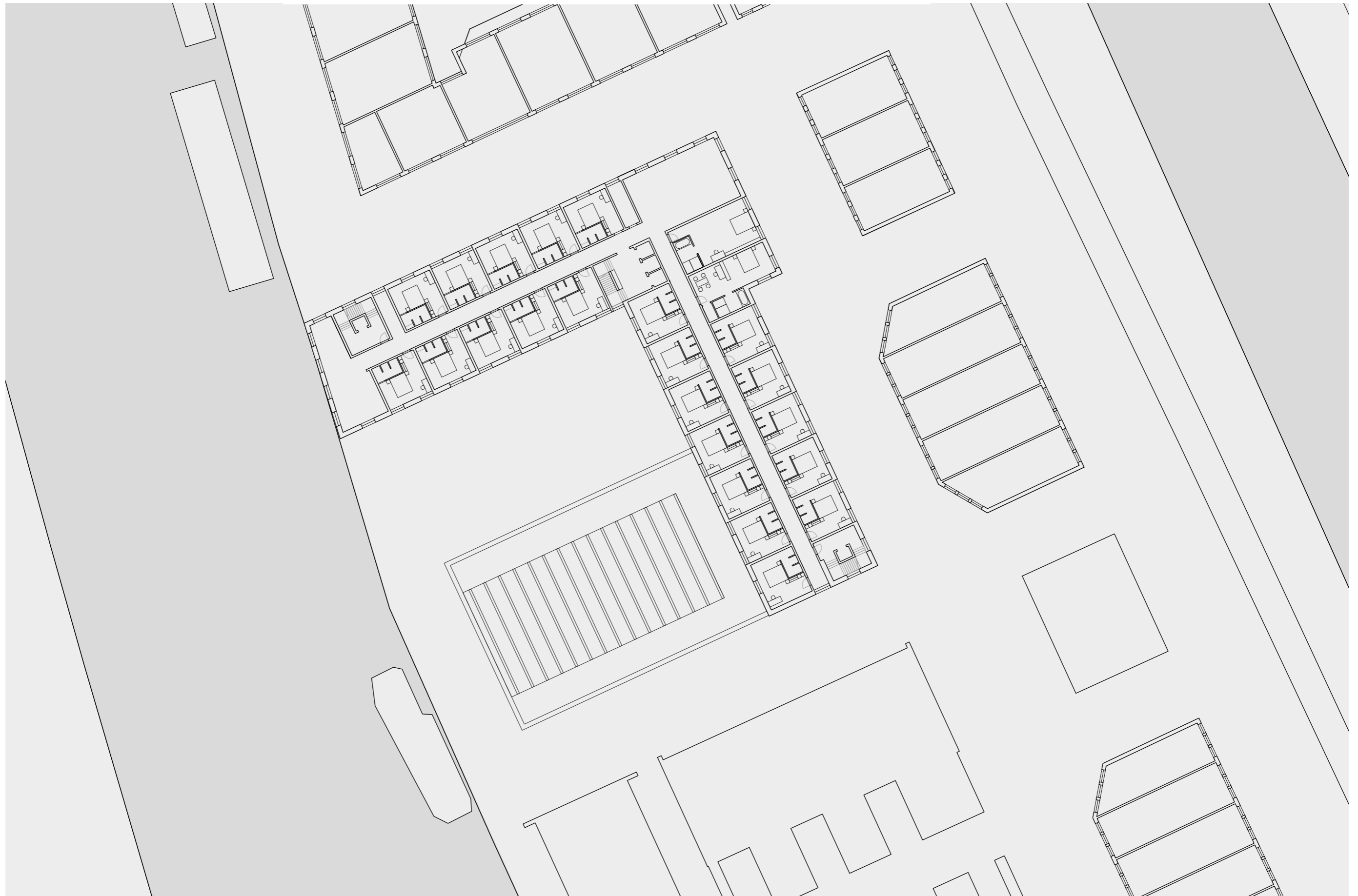


ground floor site plan



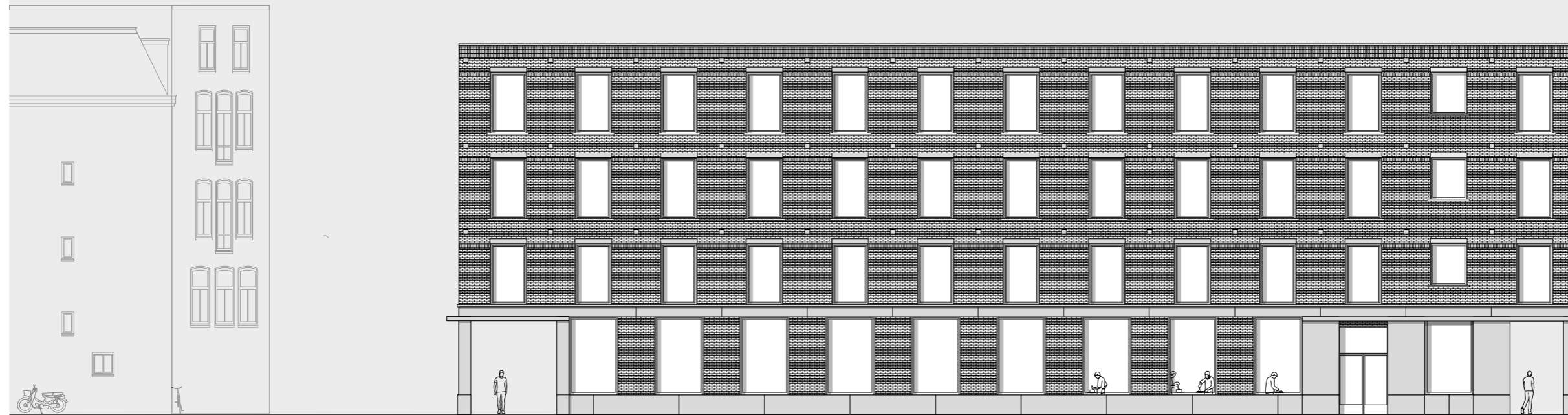
0 1 2 5m

first floor site plan

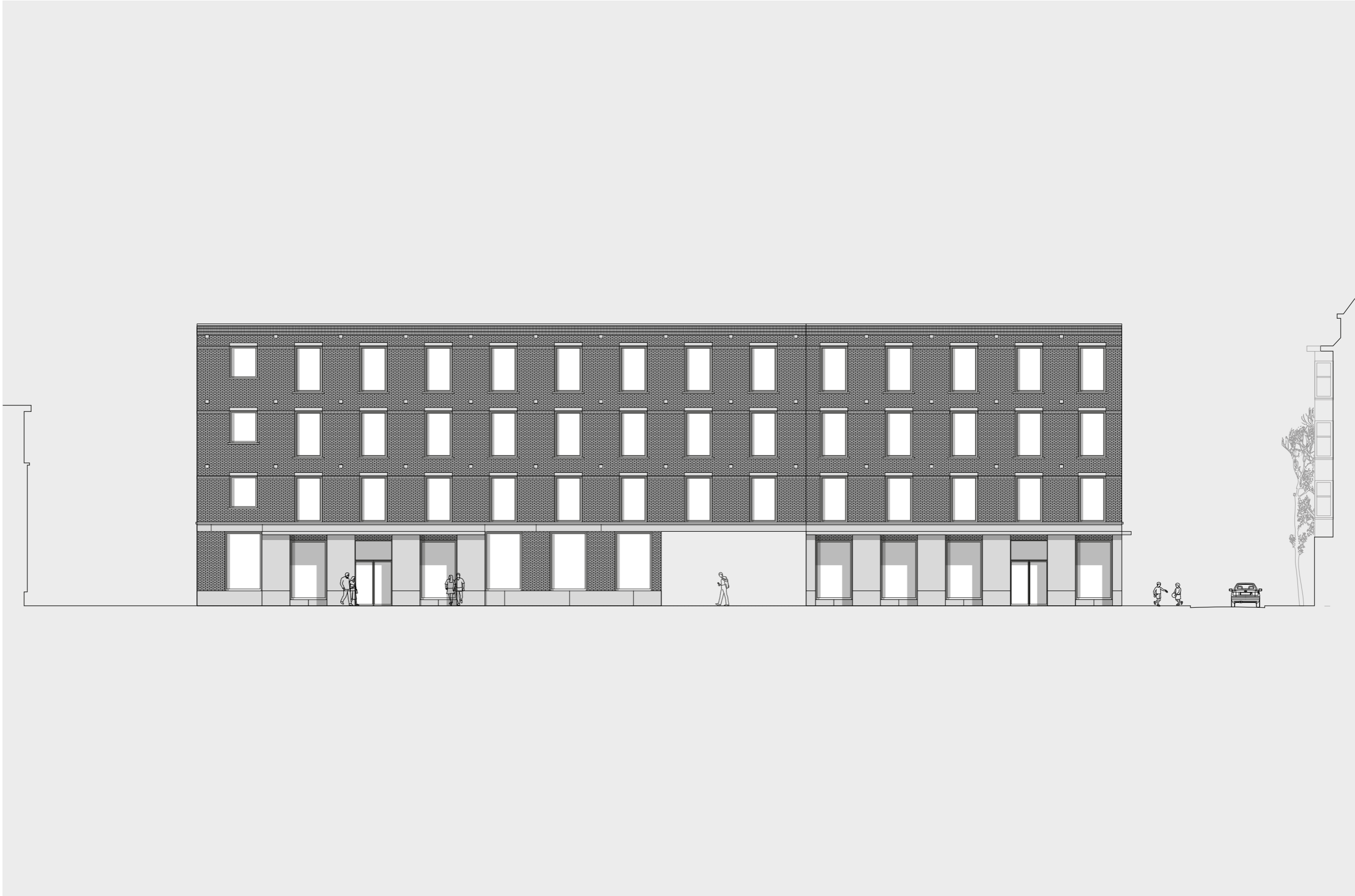


0 1 2 5m

second and third floor floor plan



groenmarktade elevation (north)



0 1 2 5m

marnixkade elevation (east)



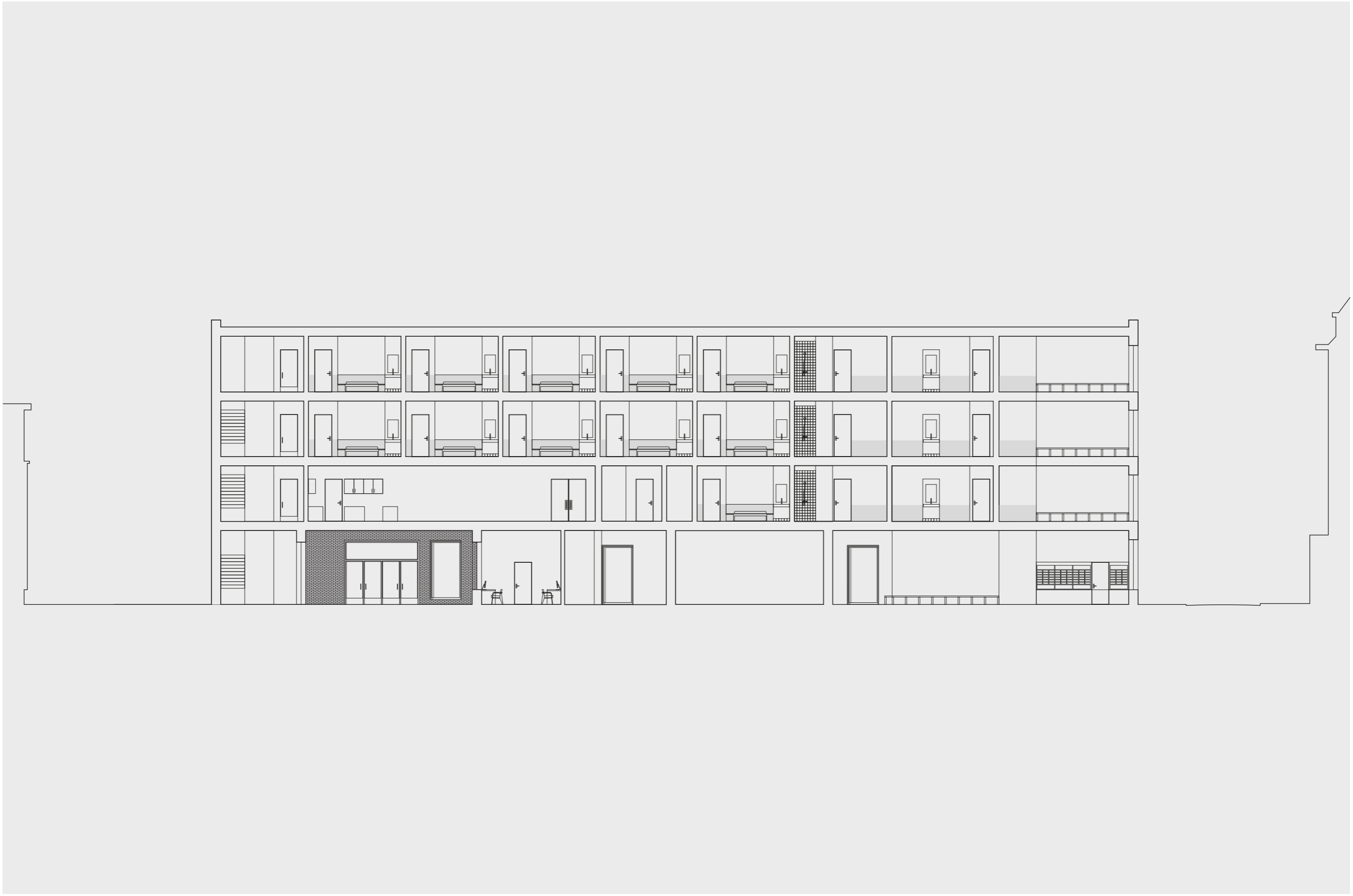
elevation from substation (south)

0 1 2 5m



elevation nassaukade (west)

0 1 2 5m



0 1 2 5m

section A-A



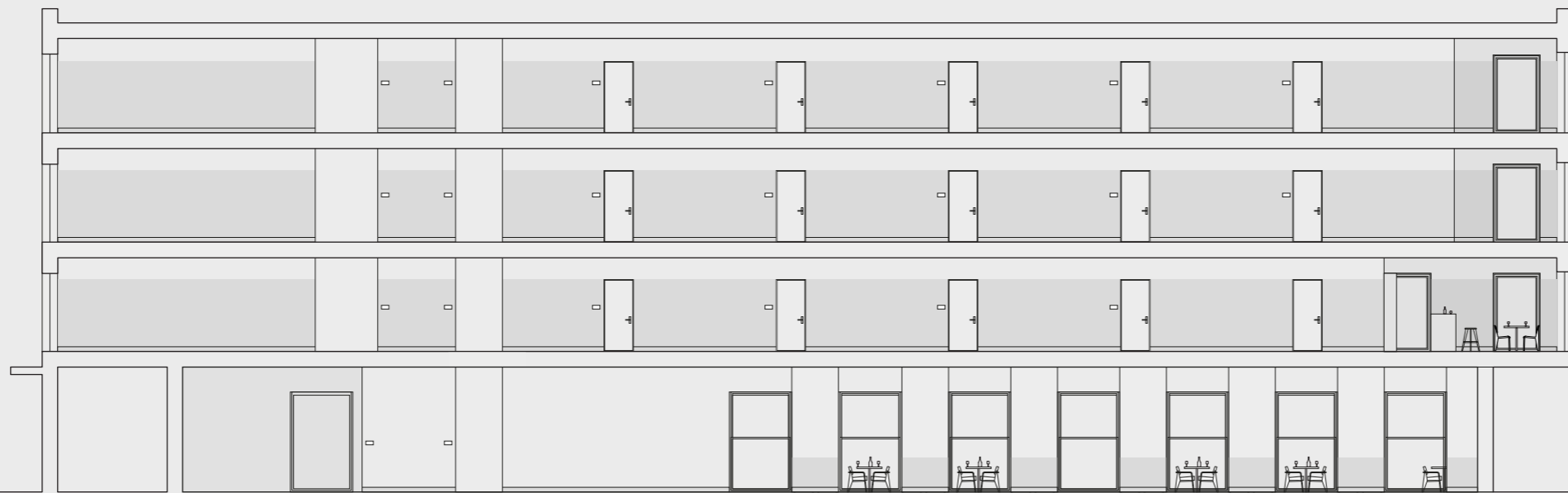
0 1 2 5m

section B-B



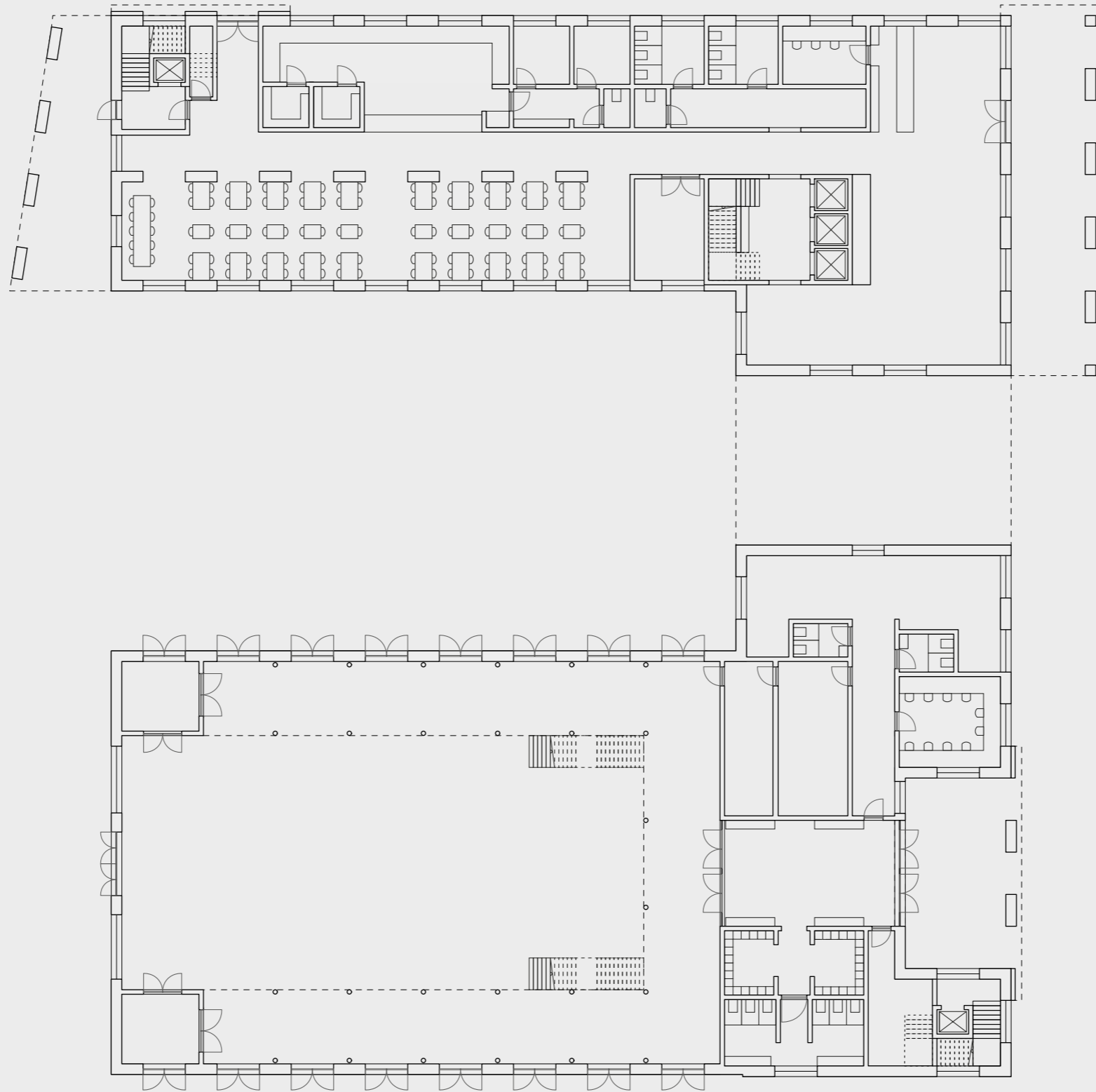
0 1 2 5m

section C-C



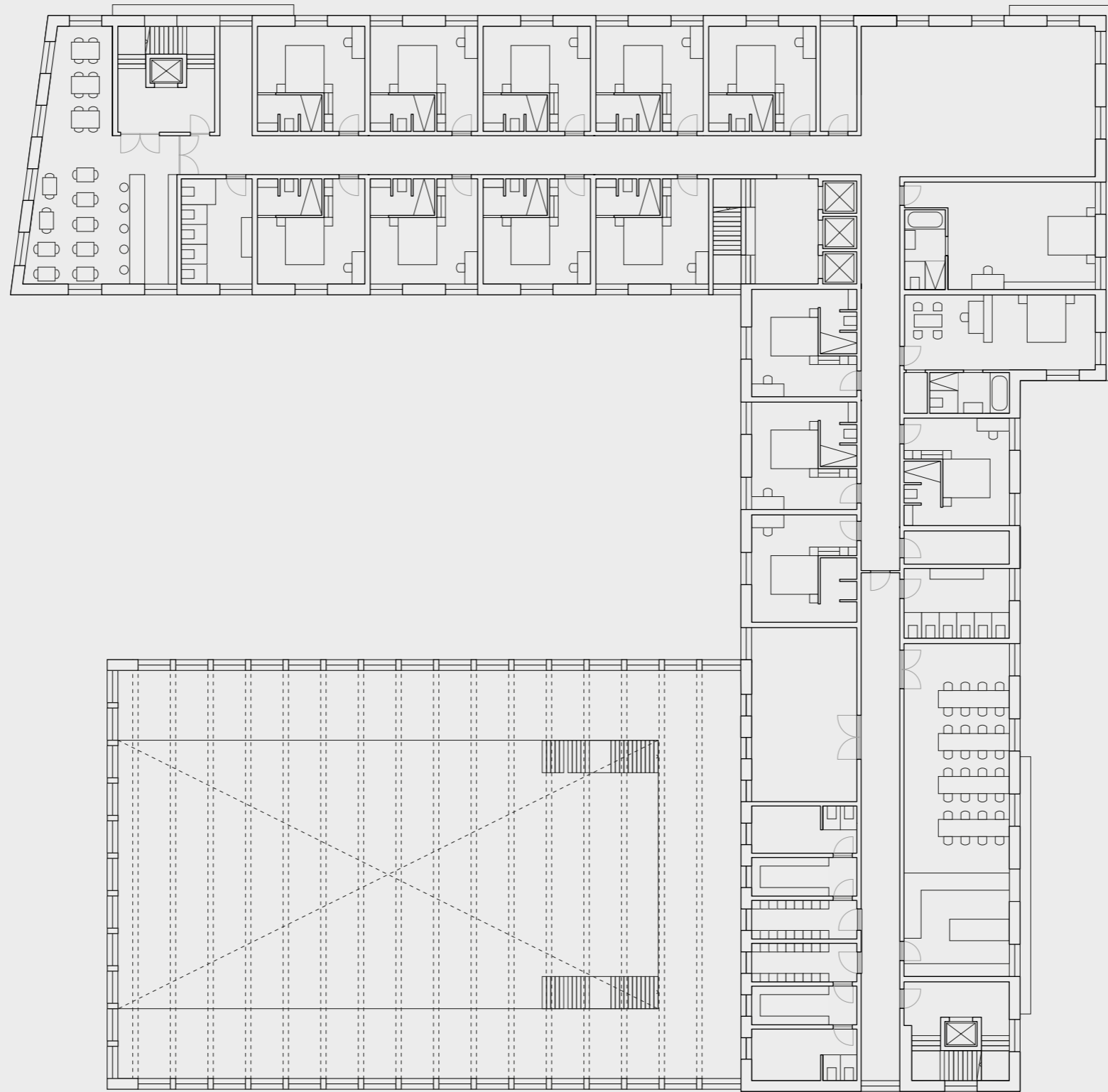
0 1 2 5m

section D-D

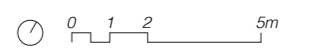


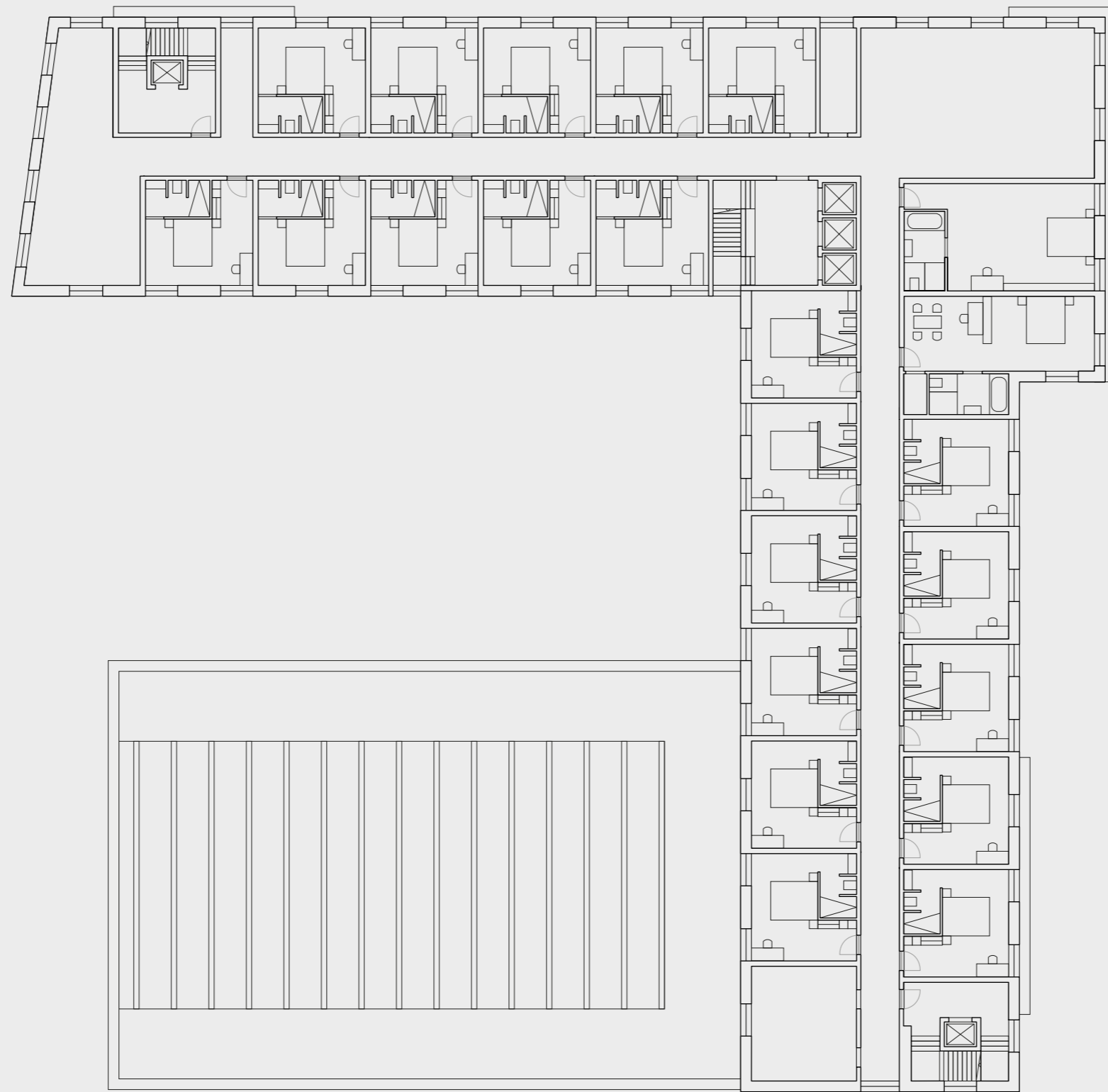
0 1 2 5m

ground floor plan



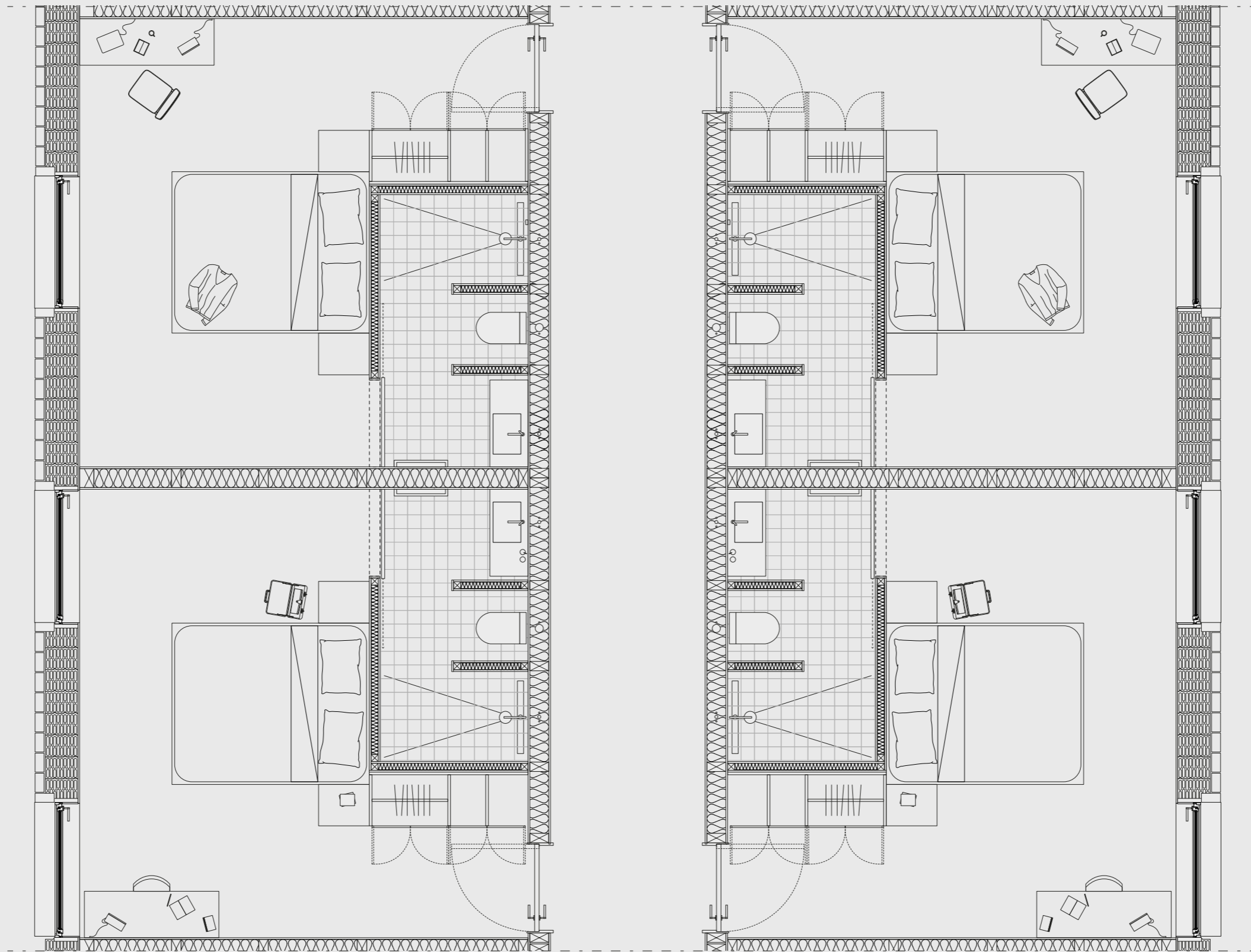
first floor plan





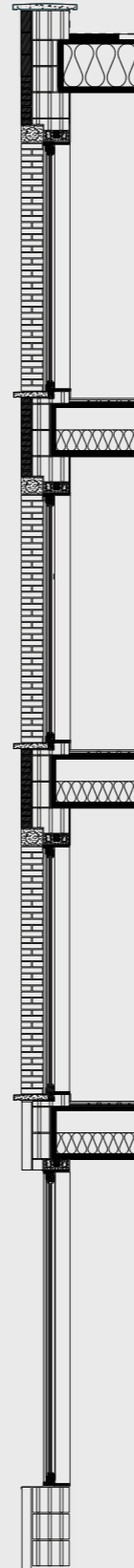
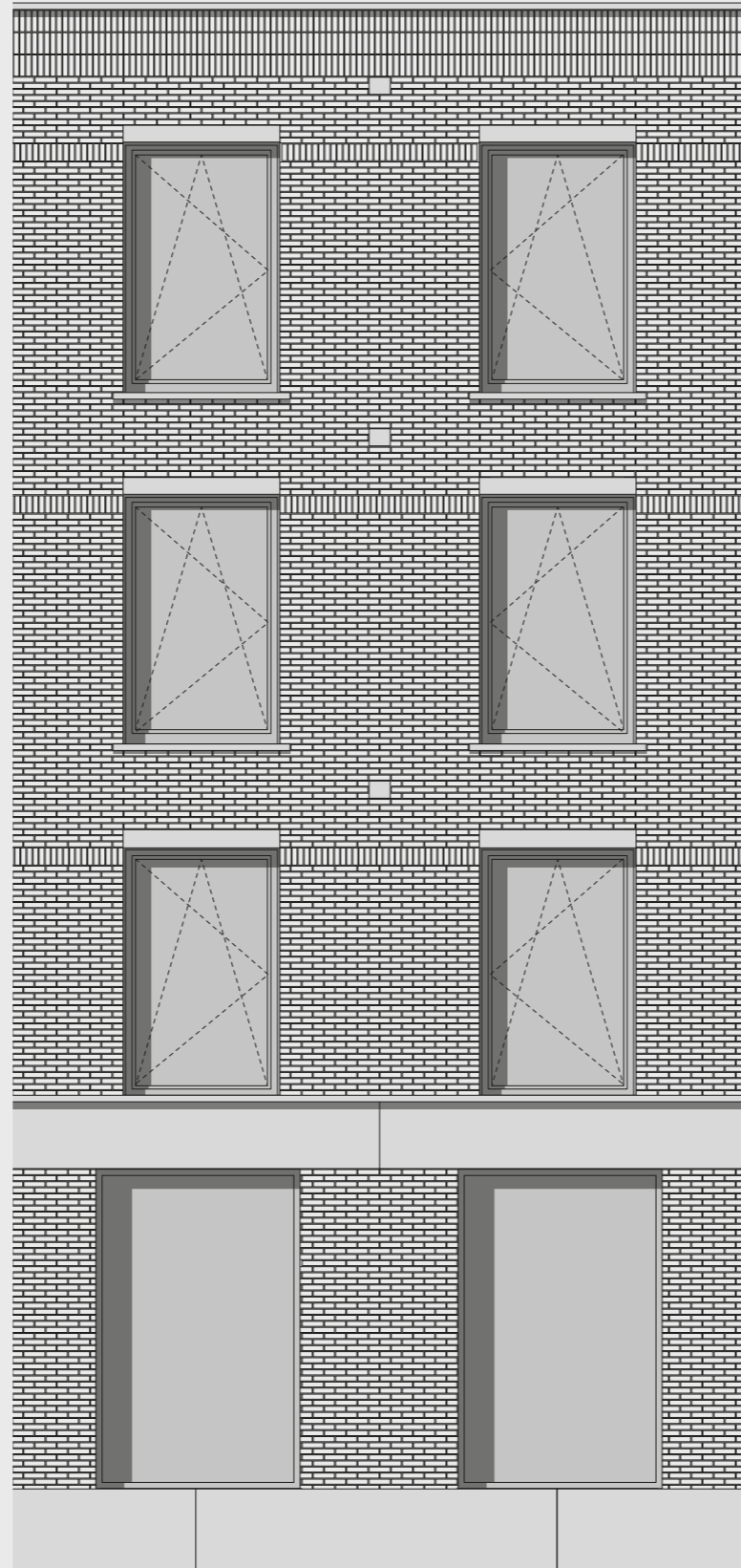
0 1 2 5m

second and third floor plan



0 20 40 100cm

room plan



facade elevation

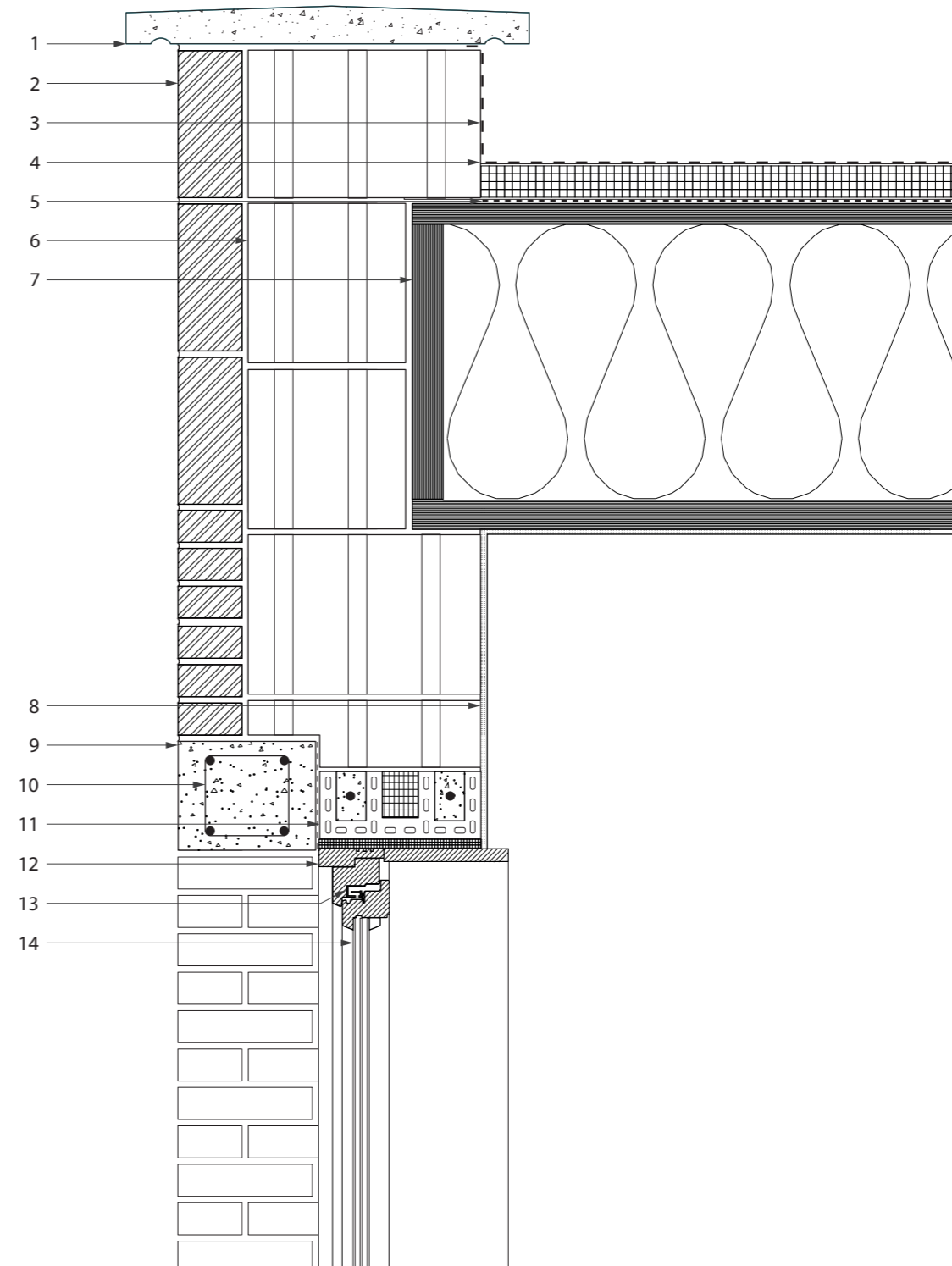
0 20 40 100cm

DETAIL 1

vertical roof detail

scale 1:10

- 1 concrete eave
- 2 WasteBasedBrick® Raw orange firing brick (210x100x50 mm)
- 3 waterproof foil
- 4 hard insulation
- 5 damp-open foil
- 6 365 T7 MW insulated porotherm block (248x365x249 mm)
- 7 kerto ripa insulated roof element (13000x5000x500 mm)
- 8 stucco finish
- 9 precast reinforced concrete lintel (210x180x1970 mm)
- 10 rebar
- 11 reinforced insulated porotherm lintel (265x113x1750 mm)
- 12 wooden window frame
- 13 trickle vent
- 14 triple-glazed window HR++

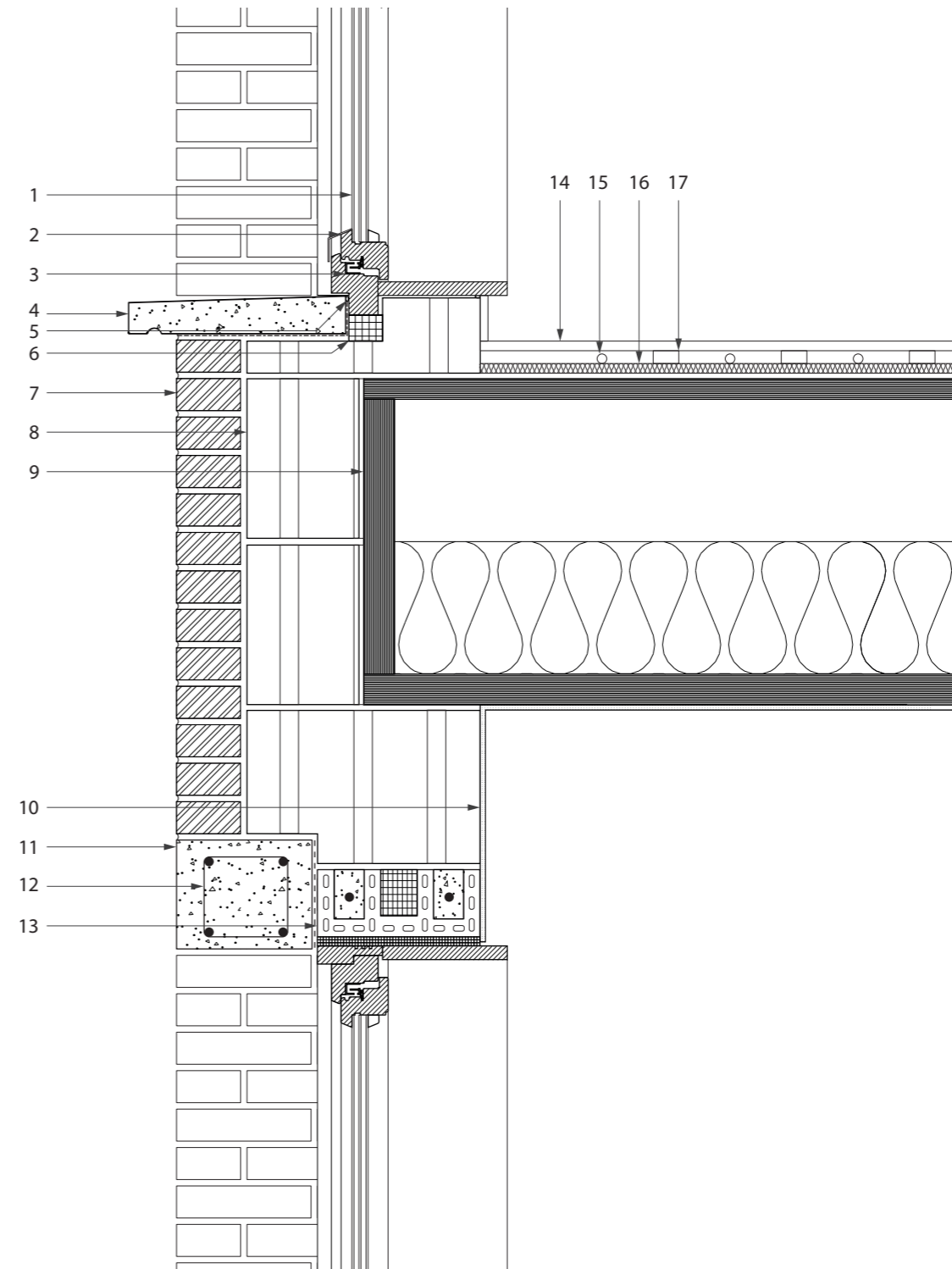


DETAIL 2

vertical wall/floor joint detail

scale 1:10

- 1 triple-glazed window HR++
- 2 wooden window frame
- 3 trickle vent
- 4 precast concrete windowsill
- 5 waterproof tapping
- 6 hard insulation
- 7 WasteBasedBrick® Raw orange firing brick (210x100x50 mm)
- 8 365 T7 MW insulated porotherm block (248x365x249 mm)
- 9 kerto ripa insulated floor element(13000x5000x500 mm)
- 10 stucco finish
- 11 precast reinforced concrete lintel (210x180x1970 mm)
- 12 rebar
- 13 reinforced insulated porotherm lintel (265x113x1750 mm)
- 14 carpet floor finish with cork fill (12 mm)
- 15 floor heating pipes (ø12 mm)
- 16 contact insulation (12 mm)
- 17 wooden floor batten



DETAIL 3

vertical column detail

scale 1:10

- 1 triple-glazed window HR++
- 2 wooden window frame
- 3 trickle vent
- 4 precast concrete windowsill
- 5 waterproof tapping
- 6 waterproof sealant
- 7 hard insulation
- 8 concrete lintel
- 9 soft insulation
- 10 waterproof tapping
- 11 kerto ripa insulated floor element(13000x5000x500 mm)
- 12 in situ concrete canopy
- 13 in situ concrete column
- 14 wooden finishing
- 15 wooden windowsill
- 16 wooden floor finishing
- 17 wooden batten (12 mm)
- 18 floor heating pipes (ø12 mm)
- 19 contact insulation (12 mm)

