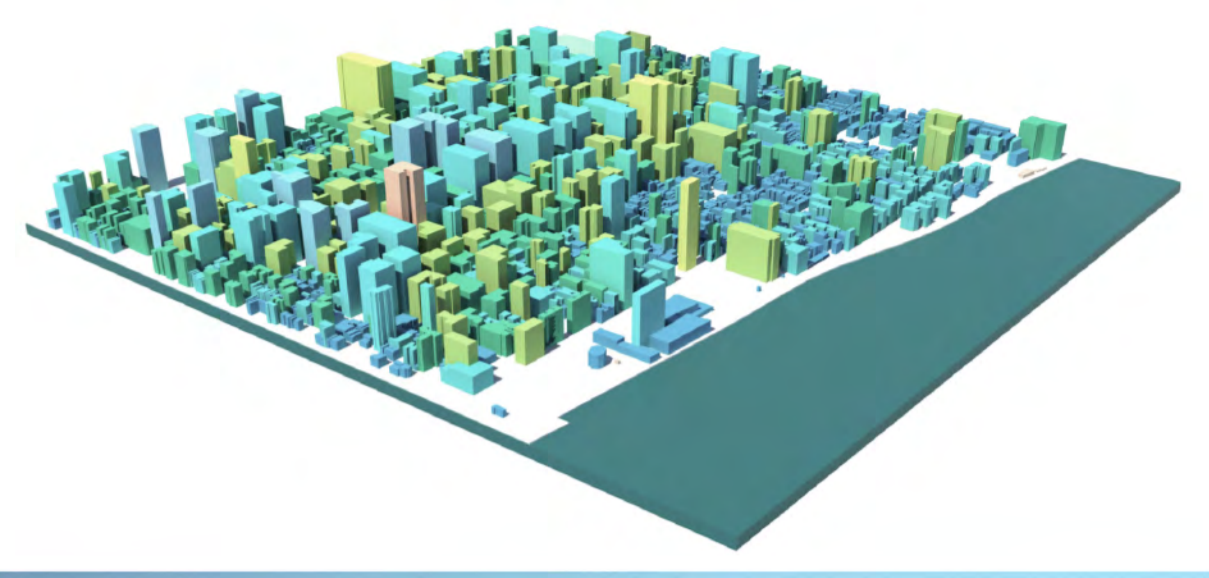
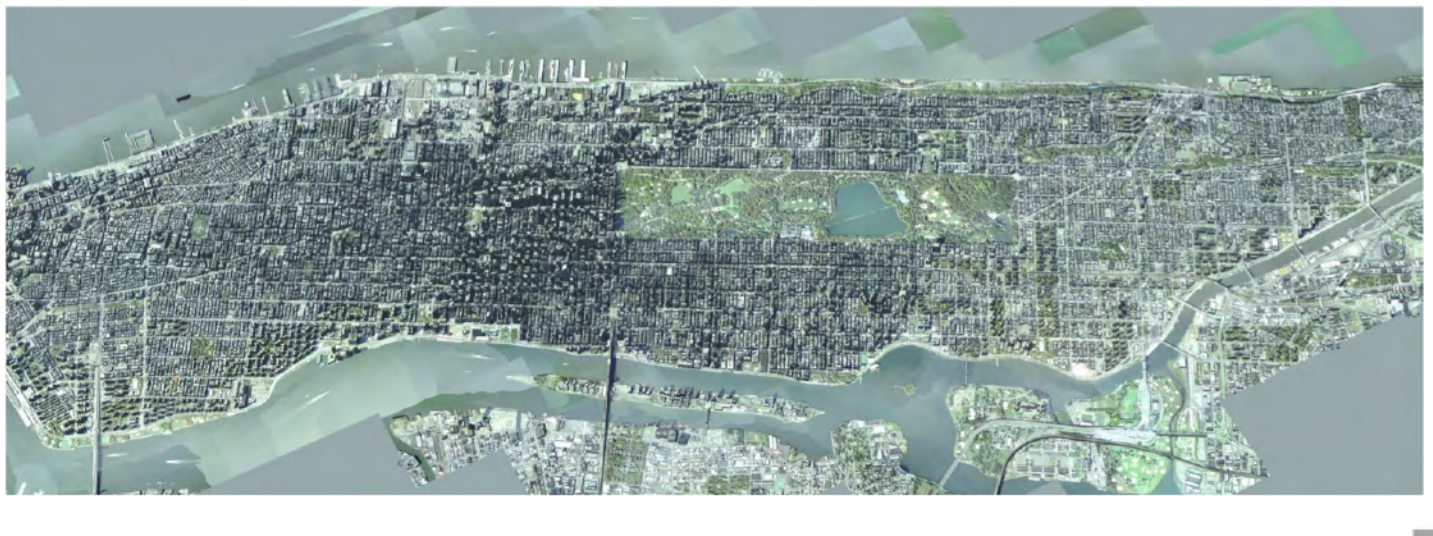
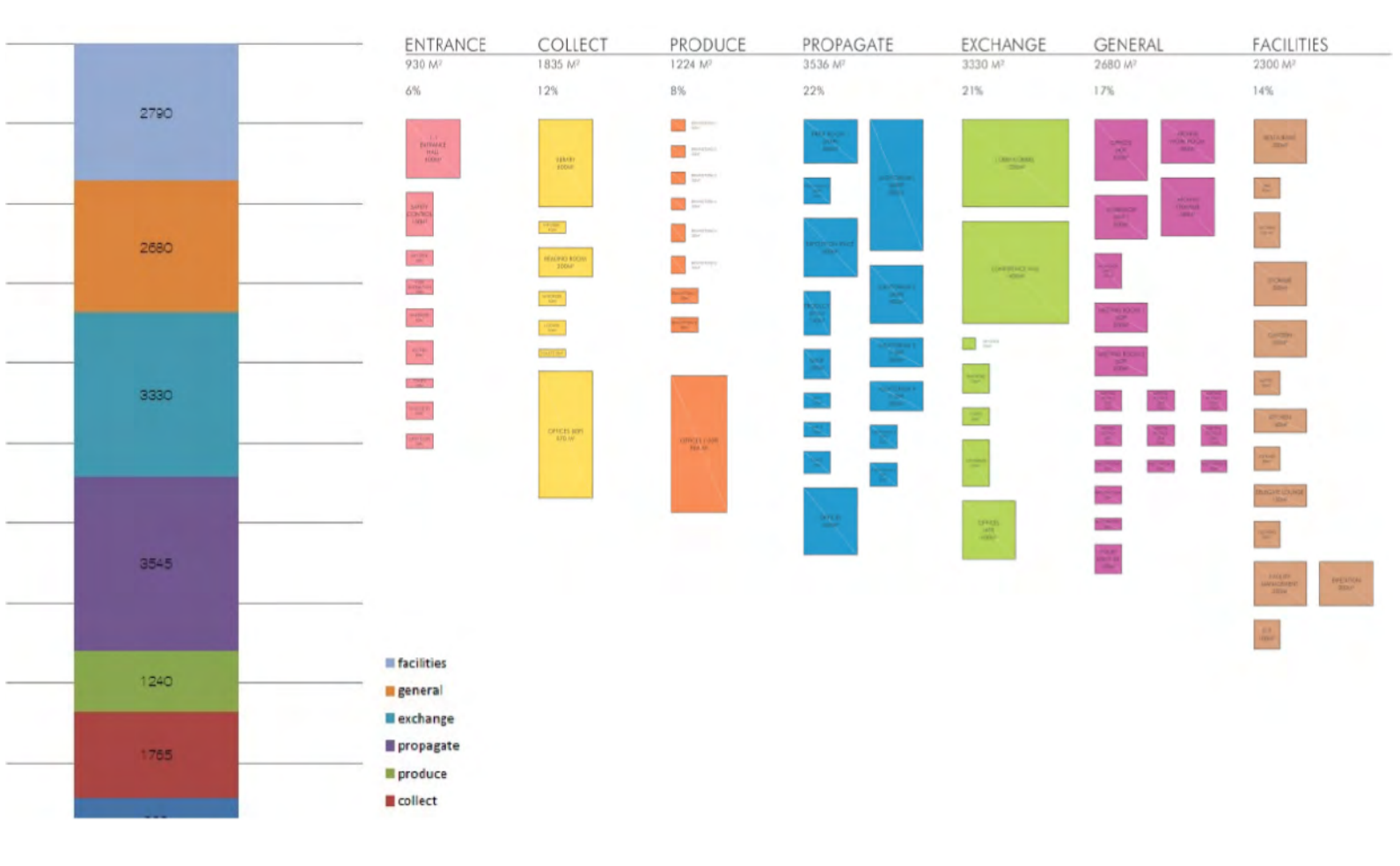
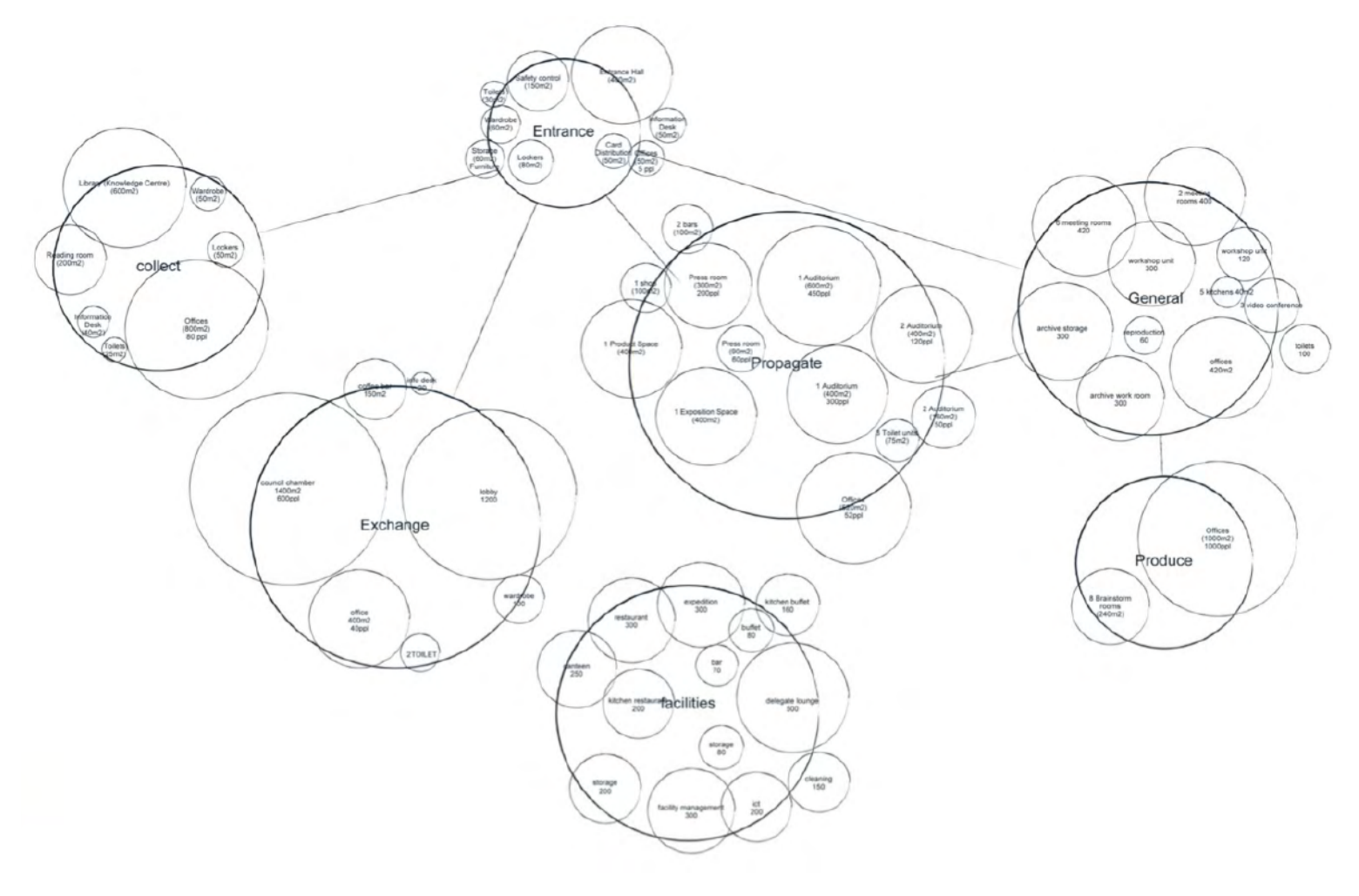
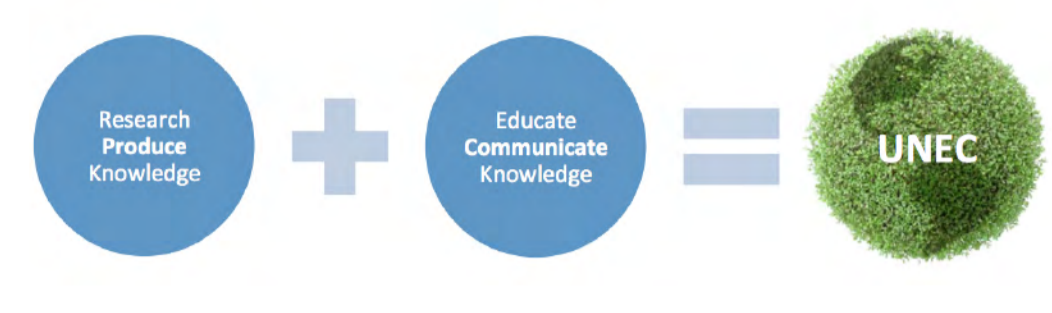


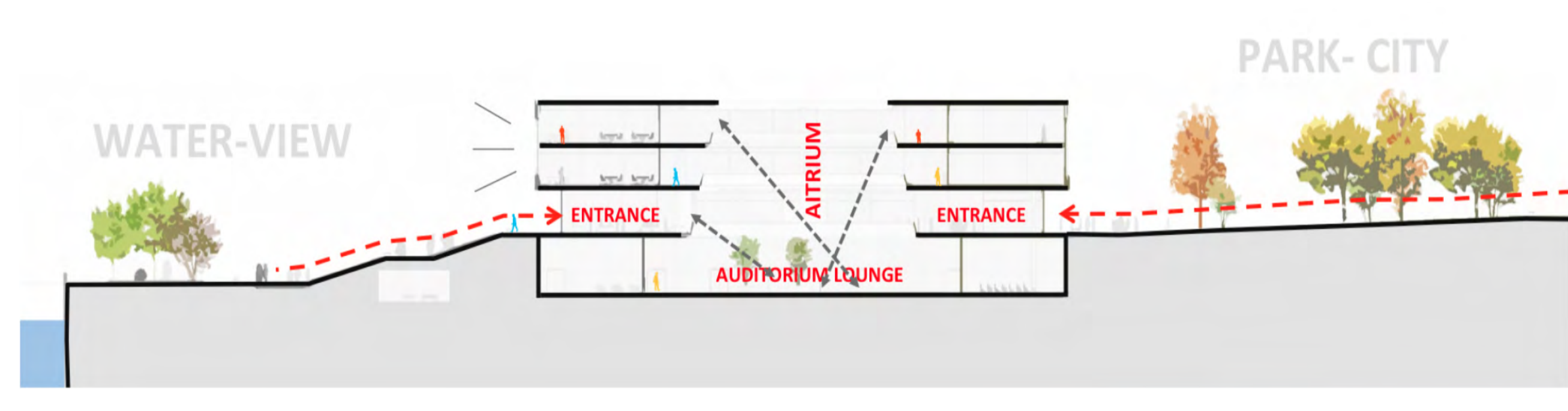
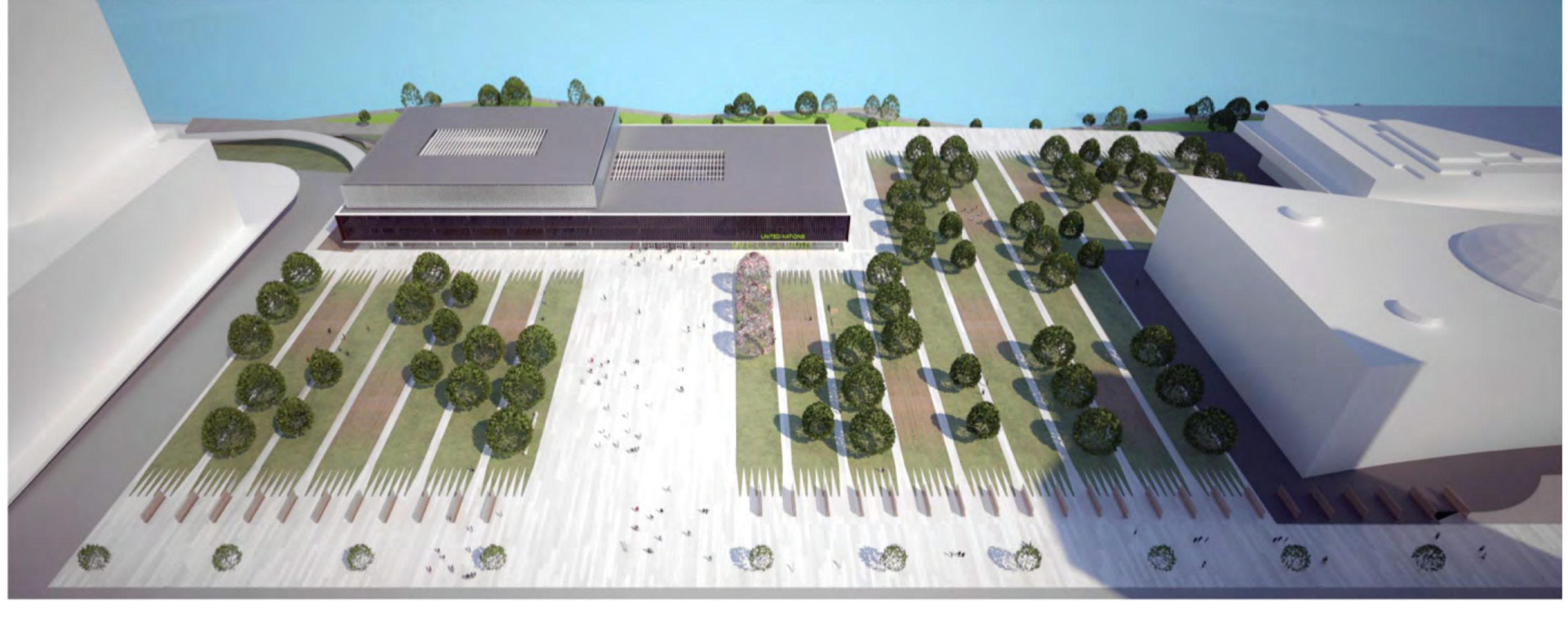
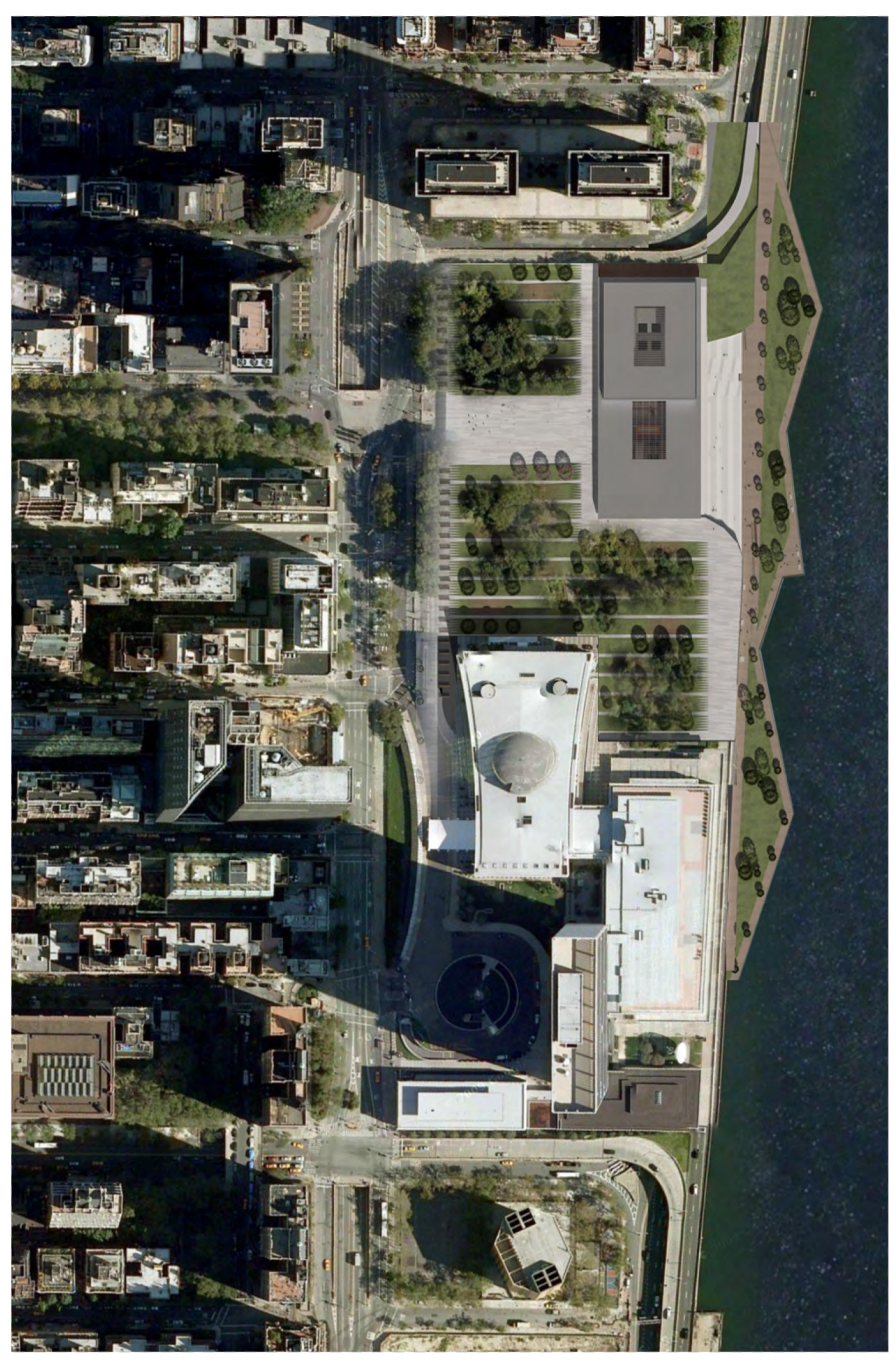
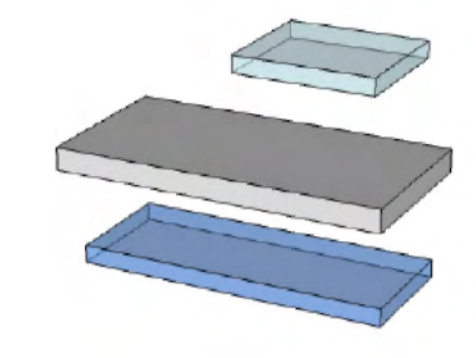


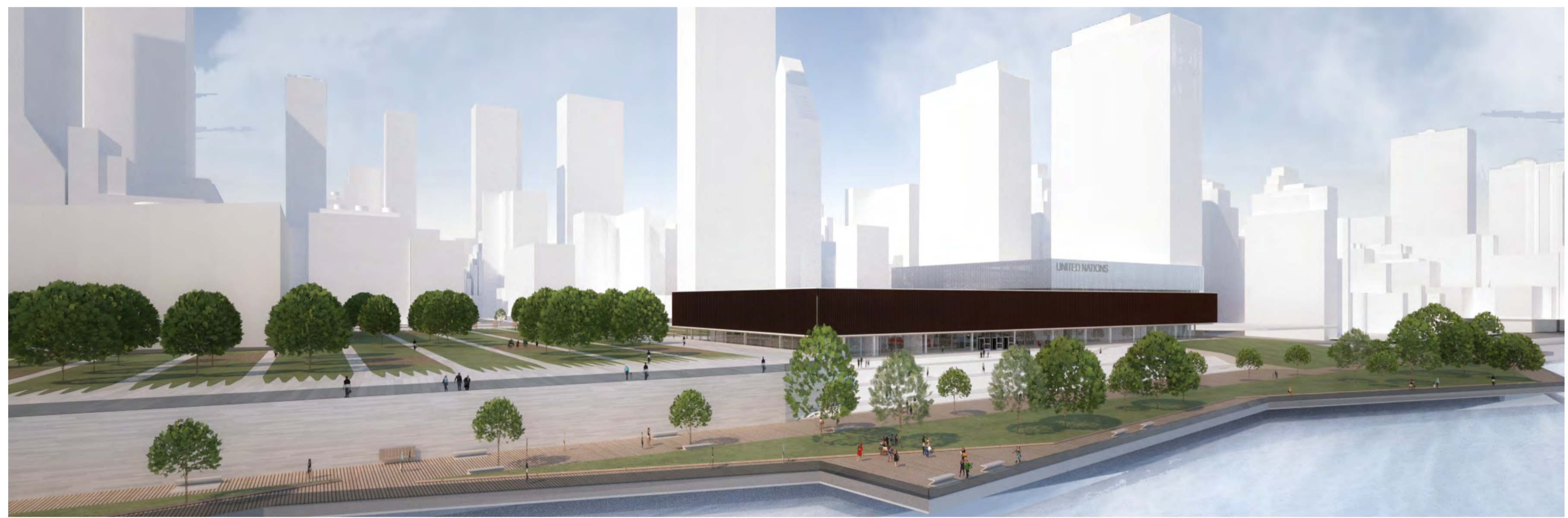
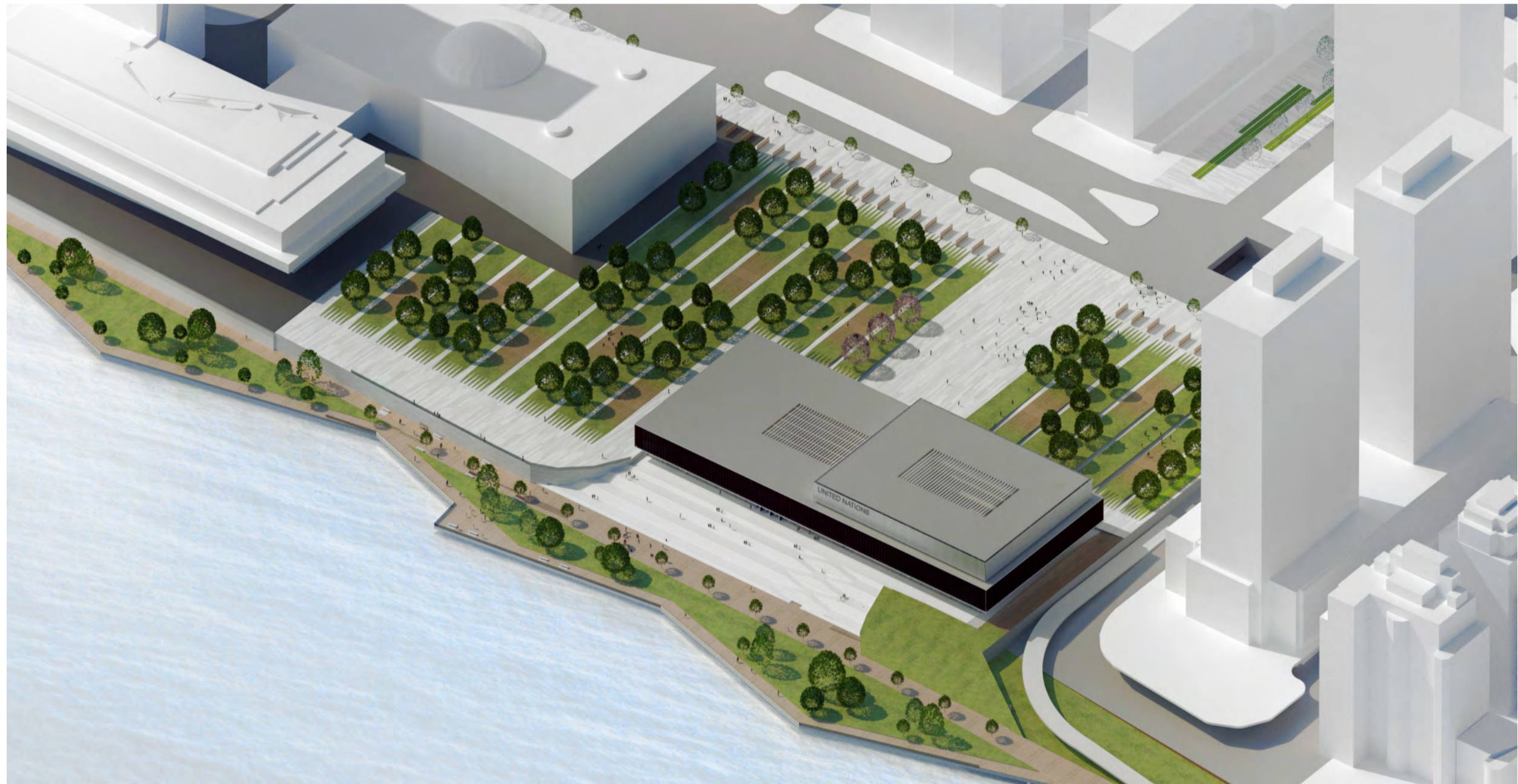
The project:

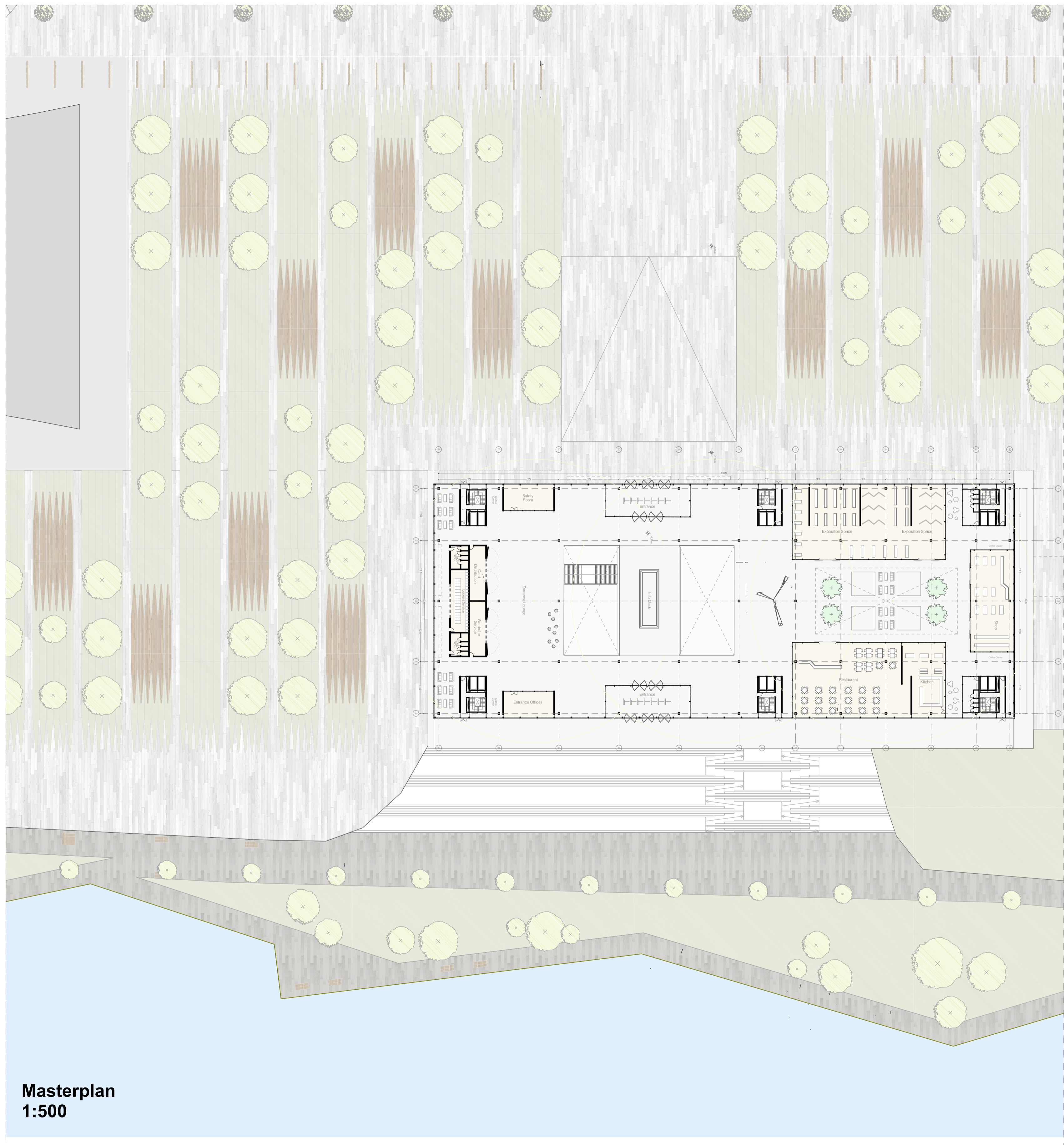
Design the United Nations Sustainability Headquarters



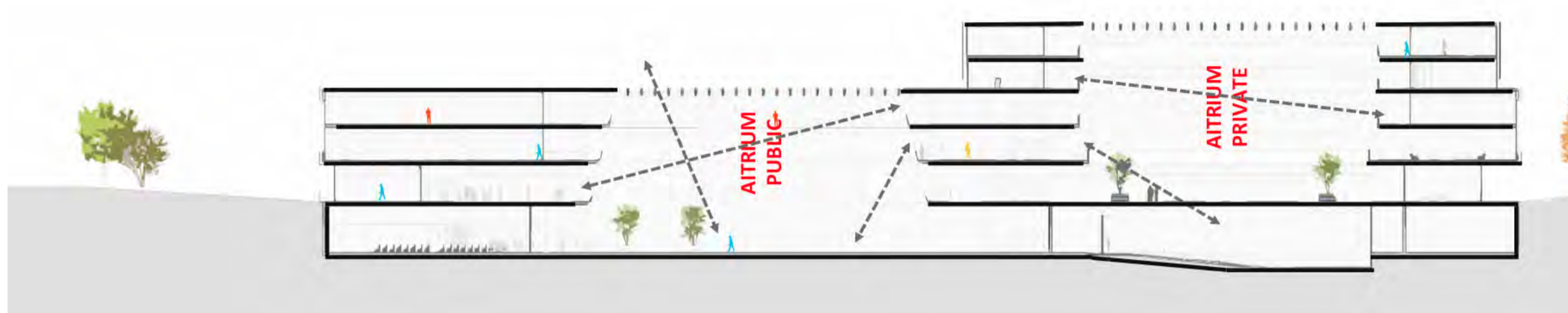
PRIVATE_OFFICES
SEMI PUBLIC_COLLECTIVE
PUBLIC

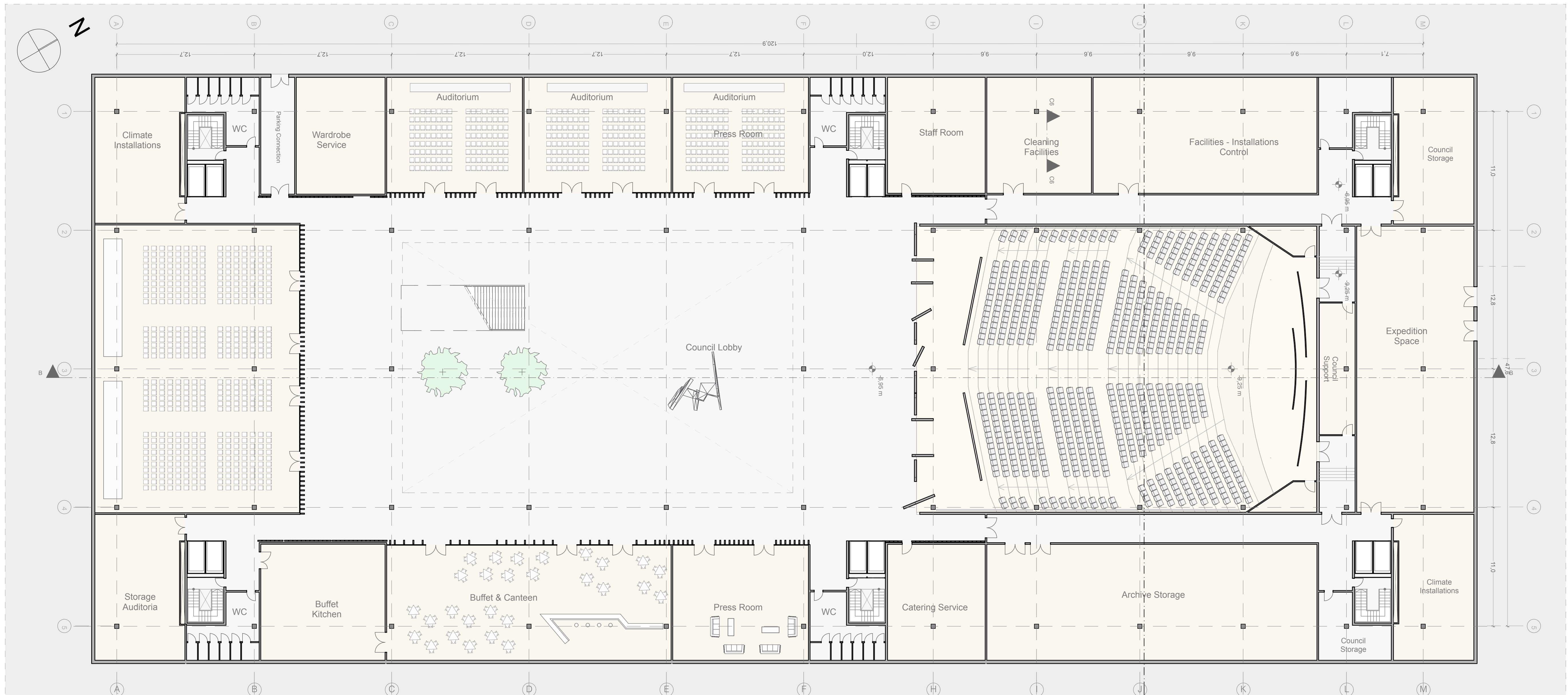




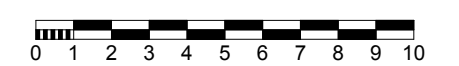


Masterplan
1:500

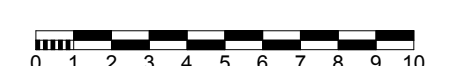


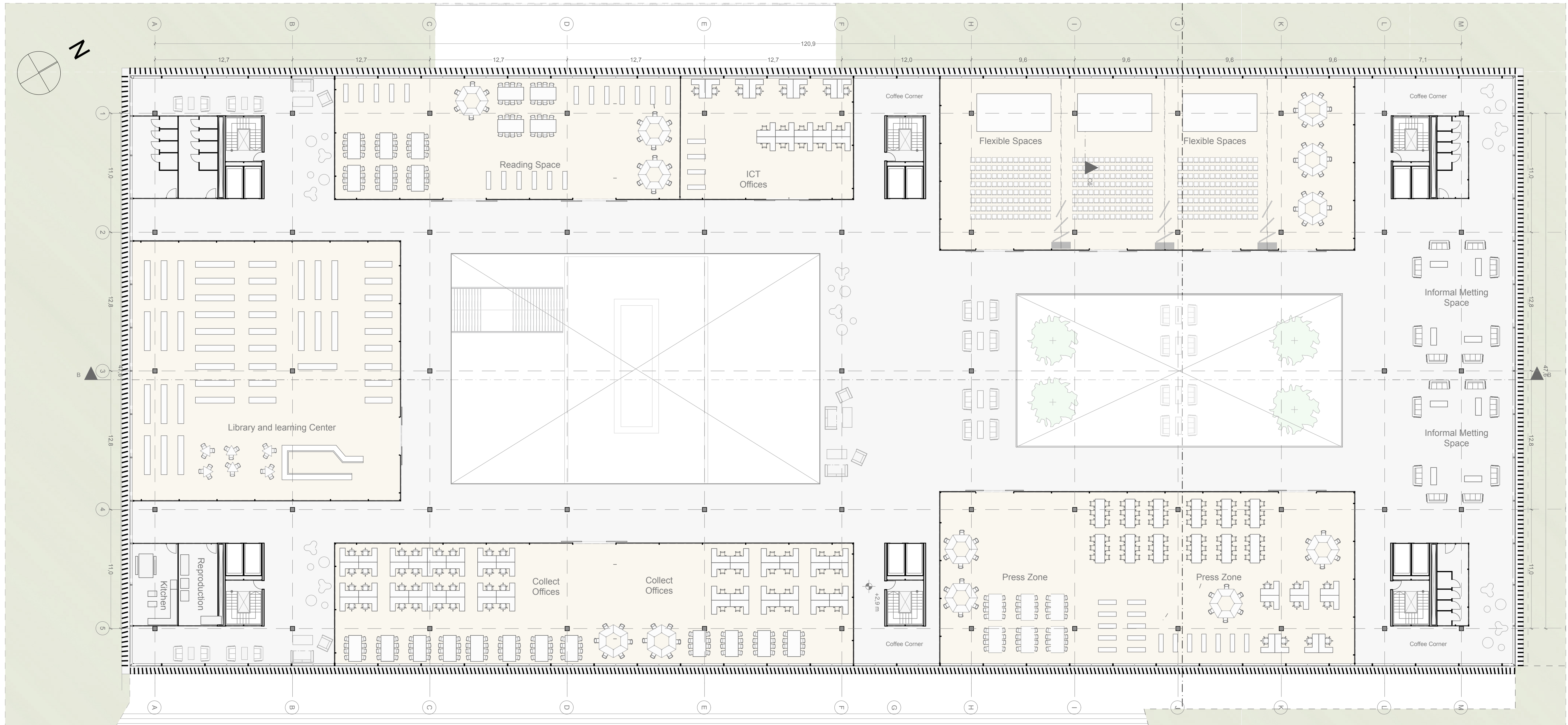


**Basement Floorplan
1:200**



**Section B_B
1:200**





First Floor plan
1:200

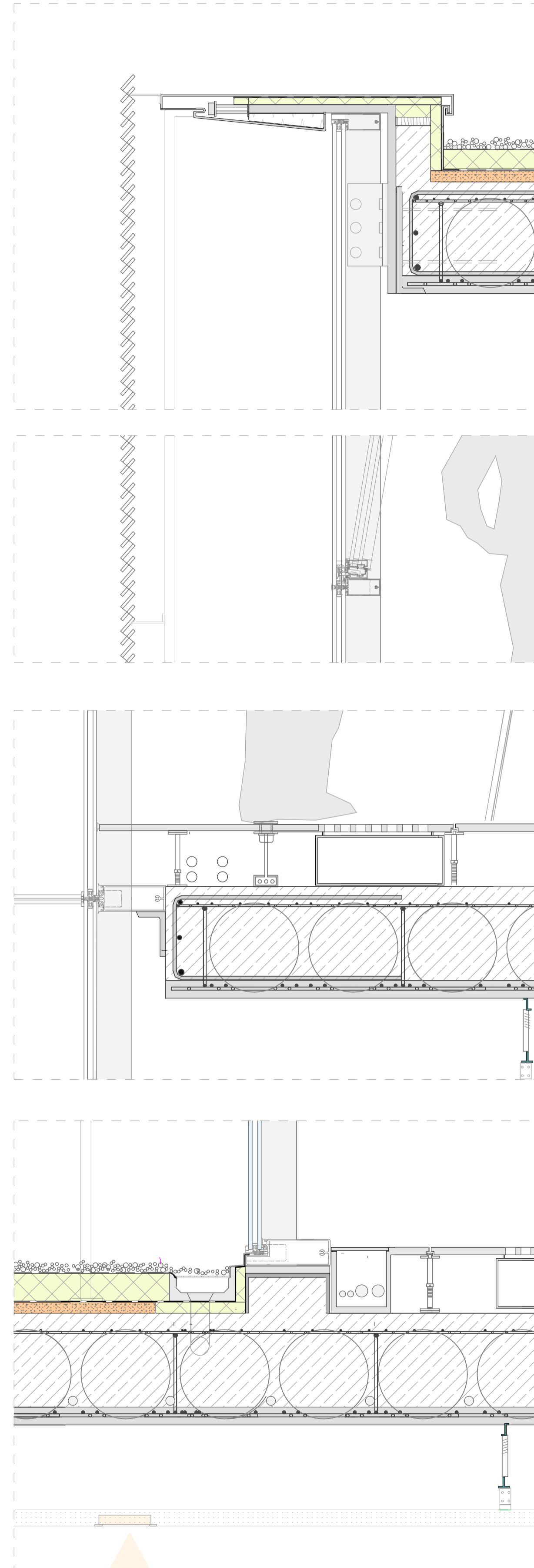
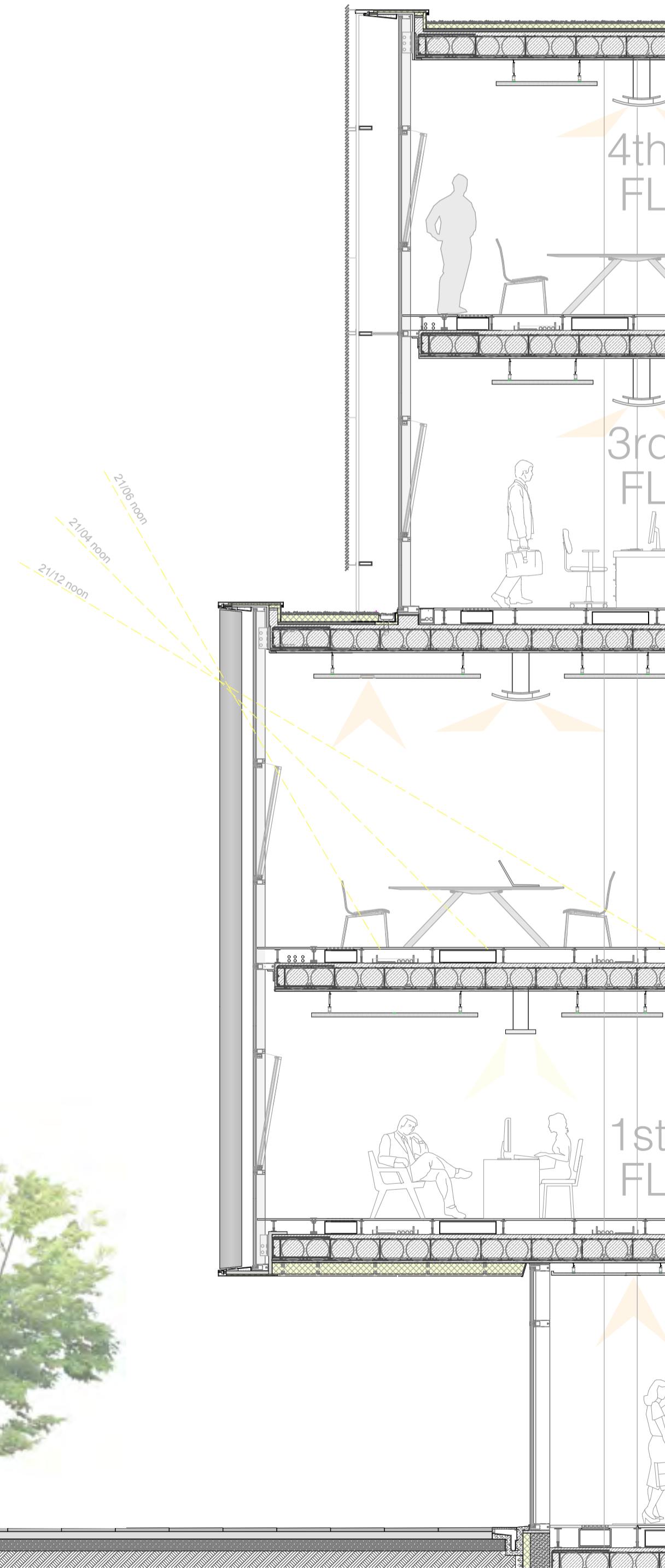


East facade
1:200





**Vertical Facade
Fragment
1:50**

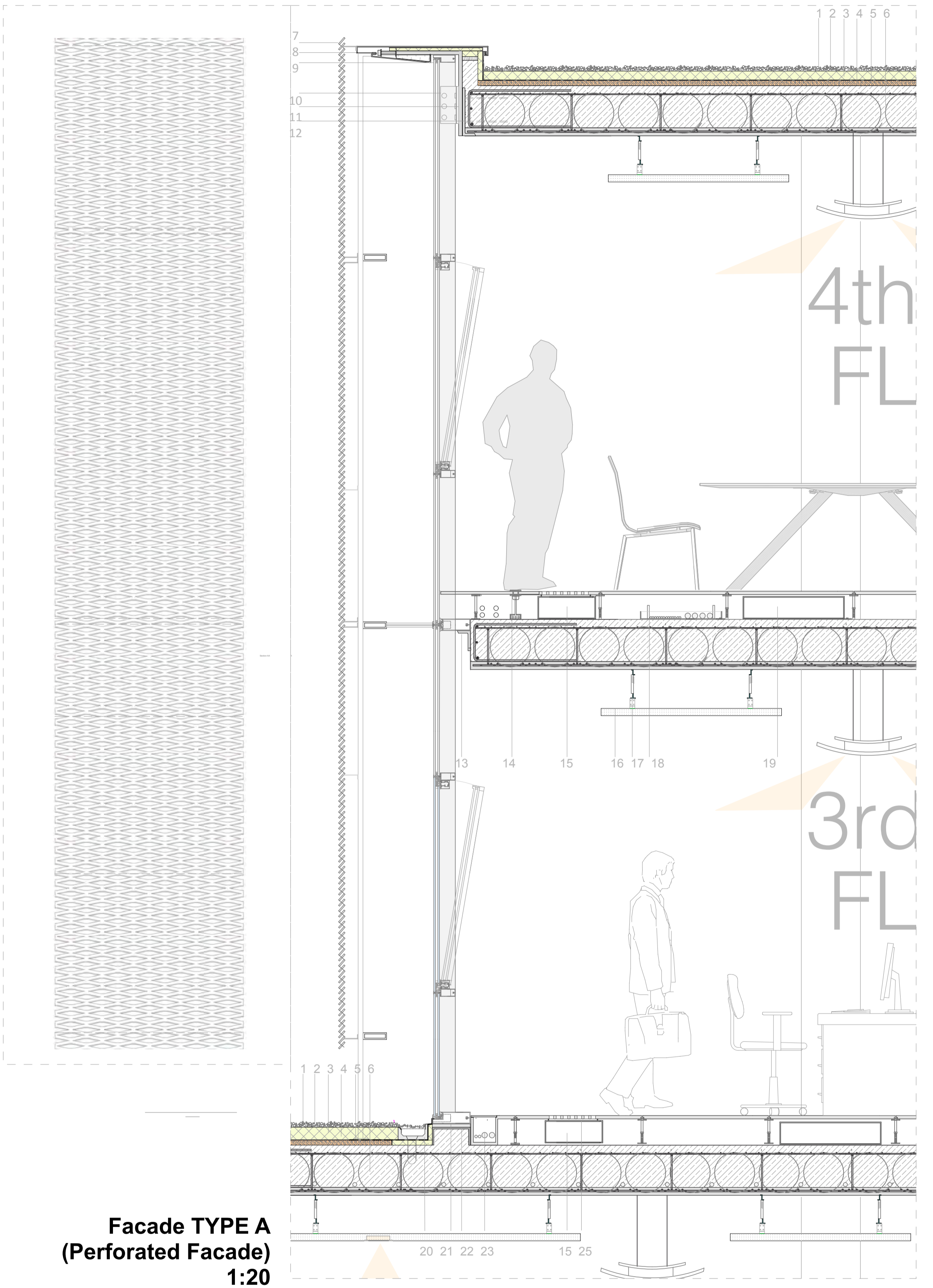


**V1
1:10**

**V2
1:10**

**V3
1:10**

**V4
1:10**



**Facade TYPE A
(Perforated Facade)
1:20**

- | | |
|--|---|
| 1. gravel | 13. connecting steel profile |
| 2. protective geotextile | 14. raised floor fixing system |
| 3. thermal insulation | 15. air outlet shaft |
| 4. water proofing membrane | 16. sound attenuating soft board |
| 5. screed | 17. suspending sound panel element |
| 6. bubble deck floor system | 18. permanent cabling install. system |
| 7. metal perforated mesh-facade | 19. air shaft |
| 8. profile comprising bolted steel plate with aluminum cover | 20. water collection element |
| 9. semi structural glazing | 21. semi structural aluminum frame |
| 10. facade mounting steel profile | 22. steel profile |
| 11. steel profile | 23. easy access cabling system |
| | 24. high insulation foam |
| | 25. raised floor air outlet element |
| | 26. vertical louvre (aluminum profile with bronze matting effect) |
| | 27. cabling space |
| | 28. aluminum cover |
| | 29. mounting clamp |

