



(11)

**EP 1 873 051 A1**

(12)

**EUROPEAN PATENT APPLICATION**

(43) Date of publication:  
**02.01.2008 Bulletin 2008/01**

(51) Int Cl.: *B63B 1/04 (2006.01)* *B63B 1/06 (2006.01)*  
*B63B 1/08 (2006.01)* *B63B 39/06 (2006.01)*

(21) Application number: **06116487.7**

(22) Date of filing: 30.06.2006

(84) Designated Contracting States:  
**AT BE BG CH CY CZ DE DK EE ES FI FR GB GR**  
**HU IE IS IT LI LT LU LV MC NL PL PT RO SE SI**  
**SK TR**  
 Designated Extension States:  
**AL BA HR MK YU**

(71) Applicant: **Technische Universiteit Delft**  
**2628 CN Delft (NL)**

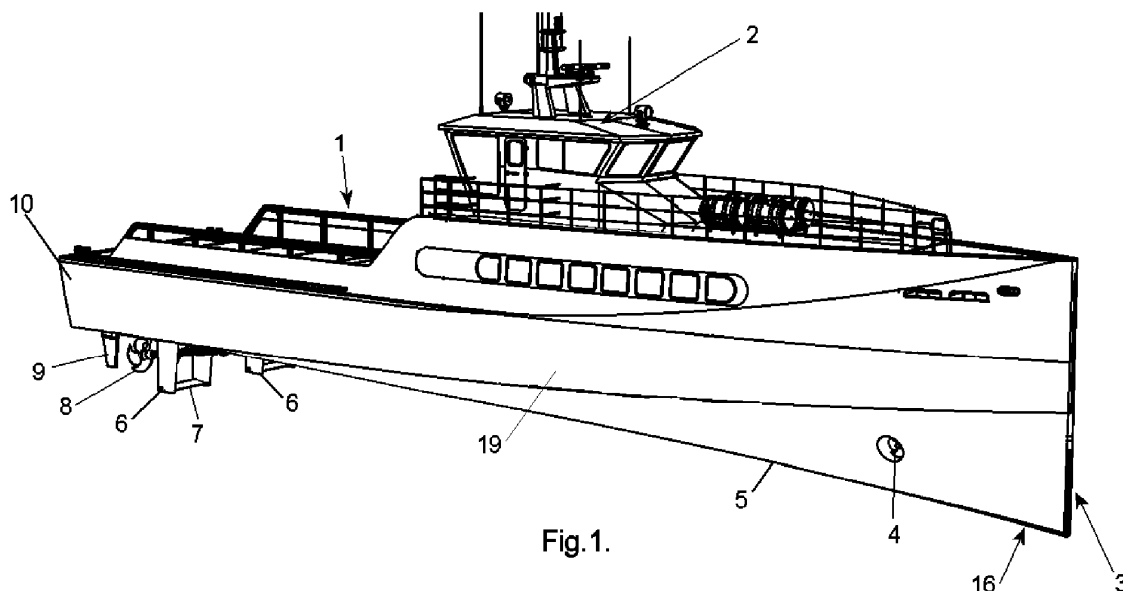
(72) Inventor: **Keuning, Jan Alexander**  
**4797 BA Willemstad (NB) (NL)**

(74) Representative: **Uittenbogaart, Gustaaf Adolf**  
**Indeig B.V.**  
**Bloemendaalseweg 277A,**  
**P.O. Box 3**  
**2050 AA Overveen (NL)**

(54) **Ship**

(57) The invention concerns a ship designed for use at high speed and/or heavy seas having a single long and slender hull, whereby the front half of the hull has more or less vertical sides, minimal flare in the bow sections and towards the bow an increase in draught at its center line combined with a more or less similar increase

of freeboard and whereby the aft end of the hull has a flat or slightly V-shaped bottom with one or more propellers and/or waterjets as propulsion means. In accordance with the invention at the aft end of the hull on each side at some distance from the center line and preferably near the sides at least one stationary fin is provided.



**Fig.1.**

**EP 1 873 051 A1**

## Description

**[0001]** The invention concerns a ship in accordance with the preamble of claim 1. Such a ship is known from the publication Keuning, J.A.; Toxopeus, S.; Pinkster, J.; The effect of bow-shape on the seakeeping performance of a fast monohull; Proceedings of FAST 2001 conference, September 2001; page 197-206; ISBN 0 903055 70 8, publisher The Royal Institute of Naval Architects. In this publication the ship according to the invention is described as the AXE BOW design. The described disadvantage of the known design is that due to its deep bow and flat aft ship the course stability is insufficient. The proposed solution for this is to apply a center skeg or cutwater in the stern region. In practice this proposal does not bring the desired improvement as the draught near the bow is more than the draught of the cutwater so that the cutwater acts in disturbed water and does not generate sufficient stabilizing force in case of sideway movement of the aft of the hull due to a wave. In order to overcome this disadvantage the ship is in accordance with claim 1. In this way there are at least two stationary fins that move under influence of the ships forward speed in more or less undisturbed water, so that they can generate sufficient stabilizing forces to ensure course stability.

**[0002]** In accordance with an embodiment of the invention the ship is according to claim 2. By designing the fins in this way they increase the flow resistance of the ship only slightly and the more or less vertical front edge makes them very effective.

**[0003]** In accordance with an embodiment of the invention the ship is according to claim 3. In this way it is easy to obtain minimal flare in the bow sections so that the displaced volume in waves increases only more or less linearly with the draught and so leads to better ship behavior in waves.

**[0004]** In accordance with an embodiment of the invention the ship is according to claim 4. This fillet radius makes it possible to reduce the length of the ship and so reducing the wetted surface and the flow resistance without disadvantageously influencing the ships behavior in waves.

**[0005]** In accordance with an embodiment of the invention the ship is according to claim 5. This improves the ships behavior in heavy seas as the added resistance in waves is reduced.

**[0006]** In accordance with an embodiment of the invention the ship is according to claim 6. In this way the ship can be brought in a speed dependent trim position independent of the load or mass distribution in the ship, thereby reducing drag and improving propulsion efficiency.

**[0007]** In accordance with an embodiment of the invention the ship is according to claim 7. By using water flow generated by the propellers or waterjets the adjustable upwards or downwards directed force is obtained independent from the ships speed.

**[0008]** In accordance with an embodiment of the invention the ship is according to claim 8. By using the flow direction out of the nozzles both for steering and creating the adjustable upward or downward force a compact design is possible.

**[0009]** In accordance with an embodiment of the invention the ship is according to claim 9. By using the water flow generated by the forward speed of the ship the adjustable upwards or downwards directed force is obtained in efficient way.

**[0010]** In accordance with an embodiment of the invention the ship is according to claim 10. The combination of the stationary fins with the horizontal fin makes a compact design possible whereby when locating the horizontal fin at sufficient depth of the stationary fin aeration of the horizontal fin is prevented.

**[0011]** In accordance with an embodiment of the invention the ship is according to claim 11. In this way the upwards or downwards directed forces can be adjusted in an easy way to varying circumstances such as forward speed, incoming waves and possibly also the dynamic movements of the ship.

**[0012]** In accordance with an embodiment of the invention the ship is according to claim 12. In this way it is possible to generate with the upwards or downwards directed forces a torque in longitudinal direction of the hull which torque can minimize the rolling movements of the hull.

**[0013]** In accordance with an embodiment of the invention the ship is according to claim 13. In this way the upwards and downwards directed forces can dynamically be adjusted dependent on the position and movements of the ship in the water.

**[0014]** In accordance with an embodiment of the invention the ship is according to claim 14. In this way the hull is automatically held in the optimal attitude with the lowest resistance so improving the efficiency of the ship.

**[0015]** In accordance with an embodiment of the invention the ship is according to claim 15. In this way the pitch, heave and/or roll motion are reduced in an easy way.

**[0016]** The invention will be explained in more detail below with reference to several exemplary embodiments by means of a drawing, in which:

Figure 1 shows a perspective view of a ship according to a first embodiment of the invention, whereby the propulsion means includes propellers,

Figure 2 shows a body plan of the design of the ship according to the invention, whereby figure 2a shows the various cross sections, figure 2b shows the side view and figure 2c shows the bottom view,

Figure 3 shows schematically the aft of the ship in accordance with figure 1 in back view and in side view,

Figure 4 shows schematically the aft of the ship in accordance with a further embodiment of the invention in back view and in side view,

Figure 5 shows schematically the bottom view of the aft of the ship of the previous embodiments and specifically the toe angle of the vertical fins, and Figure 6 shows a perspective view of an aft ship according to a further embodiment of the invention, whereby the propulsion means include waterjets.

**[0017]** Figure 1 shows a ship 1 which is designed in accordance with the body plan according to figure 2. The ship 1 is designed for high speeds and has a single long and slender hull with sides 19, whereby the length of the hull is at least five times the beam and for longer ships as much as seven to eight times the beam. In shorter ships the beam is relatively larger as the hull must include the propulsion means and a wider beam ensures that there remains sufficient stability. The ship 1 has one or more propellers 8 and one or more rudders 9. For manoeuvring there is a bow thruster 4 near a bow 3. The lay out on deck is as usual for instance with a wheel house 2.

**[0018]** As can be seen in figure 2 the hull of the ship 1 has a special design, in more detail the design is such that a reduction of the Froude Kriloff forces in particular in the foreship is achieved by minimizing the change in momentaneous submerged volume of the hull whilst it makes larger relative motions relative to the water level due to waves or the ships motions. This results in a design applying sides 19 as much as feasible. A further measure in the design is to reduce the change in waterline beam of the sections in particular in the foreship whilst it makes the foresaid larger relative motions. This implies there is a minimal flare in the bow sections and a bow 3 has a more or less vertical line or extends less than 30 degrees forward. By doing so the change of the added mass of the sections is minimized and with that also the changes in the hydrodynamic lift in the foreship are minimized. By increasing the freeboard and bringing the deck line 15 higher towards the bow 3 in the foreship sufficient reserve buoyancy is guaranteed.

**[0019]** The amount of increased shear in the foreship, shown in figure 2 as deck line 15, is dependent on ship size, speed and wave climate involved. A downwards sloping centre line 5 towards the foreship prevents the sections there to leave and re-enter the water whilst the ship is performing larger relative motions. The centre line 5 is at it lowest near the bow 3 near point 16 which indicates the maximum draught relative to a waterline 17. The amount of negative slope in the bottom 21 is dependent on ship size, speed and wave climate involved. The deadrise angle of the sections from bow to stern is carefully determined in order to minimize exciting forces and yet maintain sufficient hydrodynamic lift with minimal resistance.

**[0020]** Summarized the shape of the hull is such that the hull is long and slender, there is no flare in the bow sections and the sides 19 at the bow sections are almost vertical. Near the bow 3 the sides 19 make an angle  $\alpha$  seen in a horizontal plane which is smaller than 40 de-

grees. There is an increased sheer forward and down sloping centreline forward and the entry of the waterlines 20 are rounded. In order to reduce the wetted surface the bow 3 is rounded with a radius R of at least 0,1m. Depending on the beam of the ship the radius can be at least 1% of the beam.

**[0021]** When applying this new hull shape additional measures must be taken for maintaining adequate yaw or course keeping stability and to prevent undesirable control problems in particular in following or stern quartering waves. The hull itself generates destabilizing yaw and sway forces and moments which may lead to these instabilities. By the introduction of fixed vertical stabilizing fins or skegs 6 at the aft end of the hull these instabilities are prevented. The fins 6 preferably have airfoil type section shapes and have reasonable aspect ratios to generate adequate lift to counteract the destabilizing effects in yaw and sway of the hull. They are designed to optimize the yaw stability in particular at the cost of minimal increase in resistance. The fins 6 are located away from the center line 5 and preferably near the sides 19 so that they are away from the disturbed area in the water which is the result of the maximum draught 16 of the bow 3 which is much deeper in the water than an aft ship 10.

**[0022]** The restoring moment of the hull in pitch is relatively small when compared to similar craft. To a lesser extend this is also true for the restoring force in heave. The heave motion but in particular the pitch motion may be very effectively reduced by the application of one or more activated horizontal fins 7 at the aft ship 10. These fins 7 generate positive or negative lift and can be adjusted manually, if used only for trim control, or be controlled by (on board) sensors and control algorithms. In the embodiment of figure 1 there are two horizontal fins 7 which may work together and so bring forces on the aft ship 10 that counteract the heave and/or pitch of the ship 1 and can bring it in its optimal trim. In another embodiment the two horizontal fins 7 may be controlled in such a way that they create counter acting upward and downward forces and so create a torque in longitudinal direction on the ship 1 that counteracts rolling so that under proper control the stability can be improved.

**[0023]** The submerged horizontal fins 7, wetted on both sides, rely for the lift generation on both the high pressure and the suction side common for foils and they are preferably placed sufficiently deep below the water level to prevent ventilation or suction side cavitations along the fins 7. Specifically they can be used for active control of the trim angle in calm water dependent on the speed of the ship 1 in order to yield optimum attitude of the ship, for active control of the pitch and heave motion by auto pilot and control algorithm and also by applying differential steering for port and starboard horizontal fins the rolling motion can be controlled.

**[0024]** Figure 3a shows the ship 1 of figure 1 in back view with the vertical fins 6 whereby on each side of the center line 5 two fins 6 are located and whereby between these two fins 6 one horizontal fin 7 is mounted. Figure

3b shows the same in side view. For reasons of clarity the propellers 8 and the rudders 9 are not shown. As can be seen in figure 1 the propellers 8 and rudders 9 are located aft of the fins 6 and 7. It will be clear that for the propulsion of the ship 1 various designs are possible, such as three propellers 8 as shown in figure 1, two propellers, two propellers with one waterjet, one propeller with two waterjets and also two or more waterjets as shown in figure 6 (discussed hereafter).

[0025] Figures 4a and 4b show similar views of a further embodiment of the vertical fins 6 and the horizontal fins 7. In this embodiment the horizontal fin 7 extends from both sides of the vertical fin 6. The vertical fin 6 is located slightly away from side 19 so that the horizontal fin 7 does not extend outside the beam of the ship 1. The two horizontal fins 7 extending to both sides of the vertical fin 6 have a common axis and are connected to a single drive so that they move together. In the embodiment shown in figure 4 the horizontal fins 7 at starboard generate in a forward moving ship 1 an upwards directed force and the horizontal fins 7 at port generate a downwards directed force. These two forces form an anti-clockwise directed torque on the ship 1, which torque can be used to counteract forces that are for instance a consequence of waves.

[0026] The front edge of the vertical fins 6 is shown as more or less vertical as in this way the water flow around the blade is most effective for creating a stabilizing force. It will be clear that the same conditions will apply if the vertical fins 6 are for instance vertical to the plane of the underside of the ship 1, as long as the front edge of the fin is more or less perpendicular to the water flow relative to the fin 6. The front edge of the vertical fins 6 can also be slightly swept back so that material folded around the front edge is guided towards the fin's end and comes free of the fin. In the shown embodiments the vertical fins 6 are combined with horizontal fins 7. It will be clear that for proper functioning of the vertical blades 6 this is no requirement. Figure 5 shows that the vertical fins 6 make a slight angle  $\beta$  with the center line 5 so that when the ship 1 moves in a straight line forward there are stable flow conditions around the fin 6 in the length of the fin 6 seen in flow direction and a correcting force is immediately available if waves push against the aft ship 10 and change the flow direction towards the fin 6 and flow conditions around the fin 6. The value of angle  $\beta$  depends on the local flow conditions and so on the shape of the underside of the ship 1. In practice the value of angle  $\beta$  may be between 1 and 3 degrees or approximate 1,5 degrees.

[0027] In the shown embodiments the blades of the horizontal fins 7 have a horizontal rotation axis, so ensuring similar aeration conditions along the length of the fin 7. Depending on the specific conditions this is not always essential. For instance in order to reduce flow resistance under normal conditions it might be advantageous to have the horizontal fin 7 seen perpendicular to the length parallel to the underside of the ship 1. In situ-

ations where there is no need to counteract the rolling of the ship 1 it is sufficient to have a horizontal fin 7 with a single drive, which can be over the full width of the ship 1 and which is only used for ensuring the proper trim of the ship 1. For stability this horizontal fin 7 can be supported in the center.

[0028] Figure 6 shows the aft ship 10 of a further embodiment for which the hull is designed in similar way as in figure 1. The propulsion of the ship 1 in this embodiment is with waterjets. For course stability there are vertical fins 12, these vertical fins are more or less the same as the earlier discussed vertical fins 6 without the there added horizontal fins 7. In the underside of the ship there are water inlets 11 for intake of water that flows towards the waterjets and the water flows out of the nozzles 14 in the direction of a centre line 13. For steering the centre lines 13 can be moved in a known way in a horizontal plane. For generating upward and downwards forces on the aft ship 10 the centre lines 13 can be moved in a similar way in a vertical plane around a horizontal axis. The control of the direction of the centre lines 13 is arranged in a similar way as the control of the horizontal fins 7 and is preferably connected to an auto pilot for active control having a control algorithm and applicable sensors for determining positions and movements of the ship.

## Claims

1. Ship designed for use at high speed and/or heavy seas having a single long and slender hull, whereby the front half of the hull has more or less vertical sides (19), minimal flare in the bow sections and towards the bow (3) an increase in draught at its center line (5) combined with a more or less similar increase of freeboard and whereby the aft end (10) of the hull has a flat or slightly V-shaped bottom with one or more propellers (8) and/or waterjets (14) as propulsion means characterized in that at the aft end (10) of the hull on each side at some distance from the center line (5) and preferably near the sides (19) at least one stationary fin (6;12) is mounted.
2. Ship according to claim 1 whereby the stationary fins (6;12) have a more or less vertical or slightly swept back front edge and an airfoil type section shape.
3. Ship according to claim 1 or 2 whereby the bow (3) has a more or less vertical stem (3).
4. Ship according to claim 1, 2 or 3 whereby the sides (19) near the bow (3) seen in a horizontal section make a sharp angle ( $\alpha$ ) with a fillet radius (R) of at least 0,1 m.
5. Ship according to claim 4 whereby the sharp angle ( $\alpha$ ) of the sides (19) near the bow (3) is less than 40 degrees.

6. Ship according to one of the previous claims whereby the hull has at the aft end (10) of the hull adjustable force generating means (7;14) for generating an upward and/or downward force. 5
7. Ship according to claim 6 whereby the adjustable force generating means include one or more flow guides (14) placed in water flow generated by the propulsion means (8;14) and which flow guides are rotatable around a horizontal axis. 10
8. Ship according to claim 7 whereby the flow guides are formed by the nozzles (14) of the waterjets.
9. Ship according to claim 6 whereby the adjustable force generating means include at least one more or less horizontal fin (7) placed beneath the bottom of the hull and which fin is rotatable around the longitudinal axis of the fin. 15 20
10. Ship according to claim 9 whereby the or each horizontal fin (7) is attached to a stationary fin (6), preferably near its maximum depth.
11. Ship according to one of the claims 6-10 whereby each flow guide (14) or each horizontal fin (7) has a drive for rotating the flow guide or the horizontal fin around its horizontal axis. 25
12. Ship according to claim 11 whereby for flow guides (14) or horizontal fins (7) located at different sides of the hull, the drive for each flow guide or horizontal fin is independently controlled. 30
13. Ship according to one of the claims 11-12 whereby the drives are controlled by a control system which is connected to one or more sensors for determining positions and/or movements of the hull. 35
14. Ship according to claim 13 whereby the control system includes algorithm and control means for adjusting the drives in order to bring the hull in a speed dependent trim position. 40
15. Ship according to claim 13 or 14 whereby the control system includes algorithm and control means for adjusting the drives in order to reduce wave generated pitch and/or heave and/or roll motion. 45

50

55

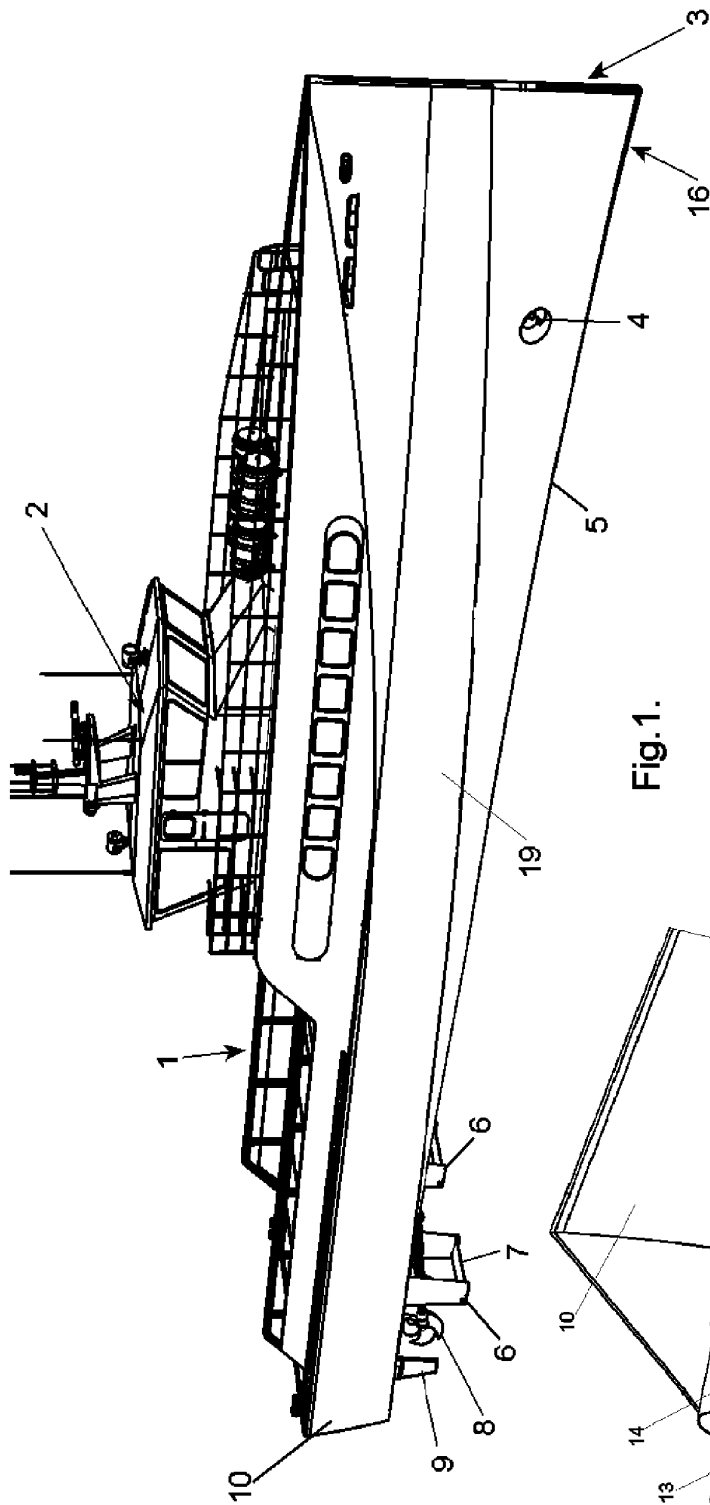


Fig. 1.

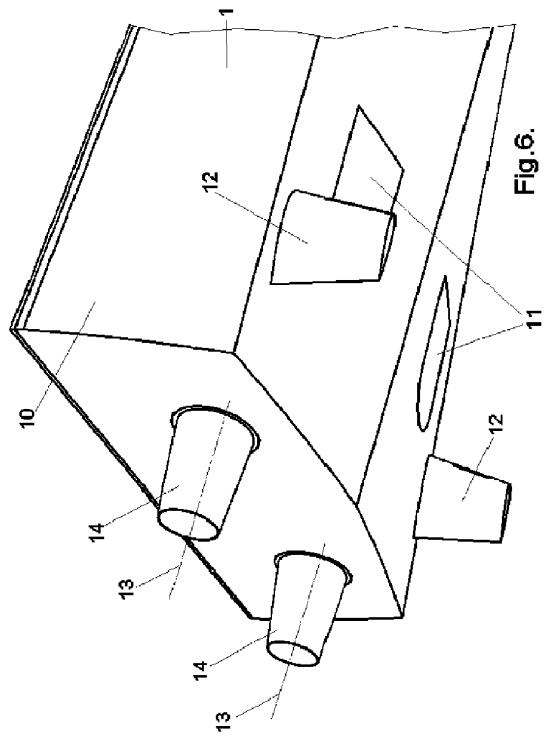


Fig. 6.

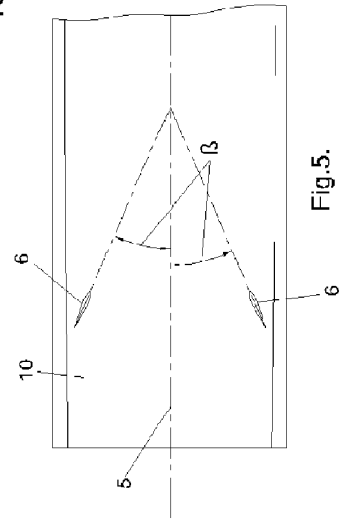


Fig. 5.

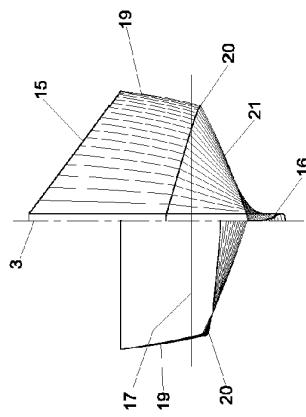


Fig. 2a.

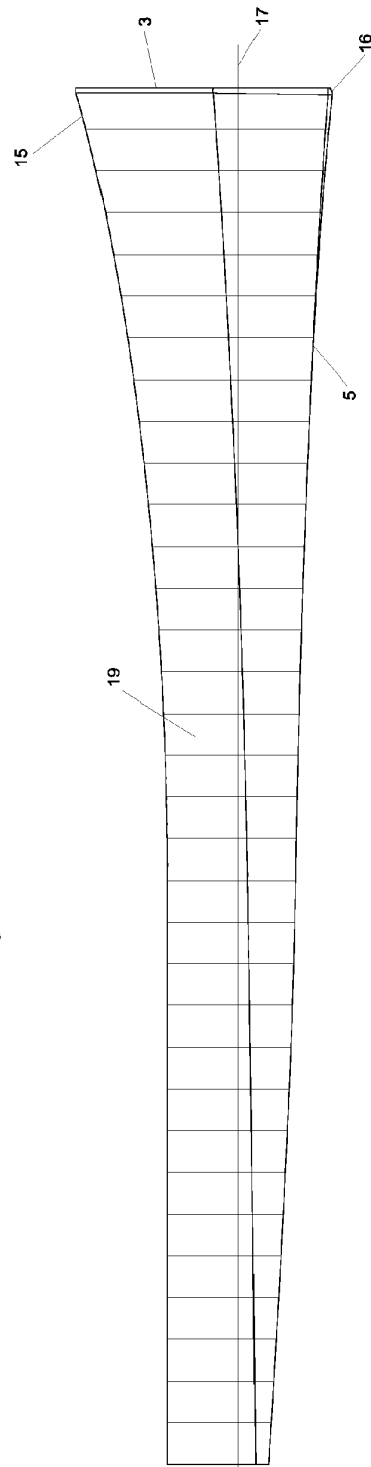


Fig. 2b.

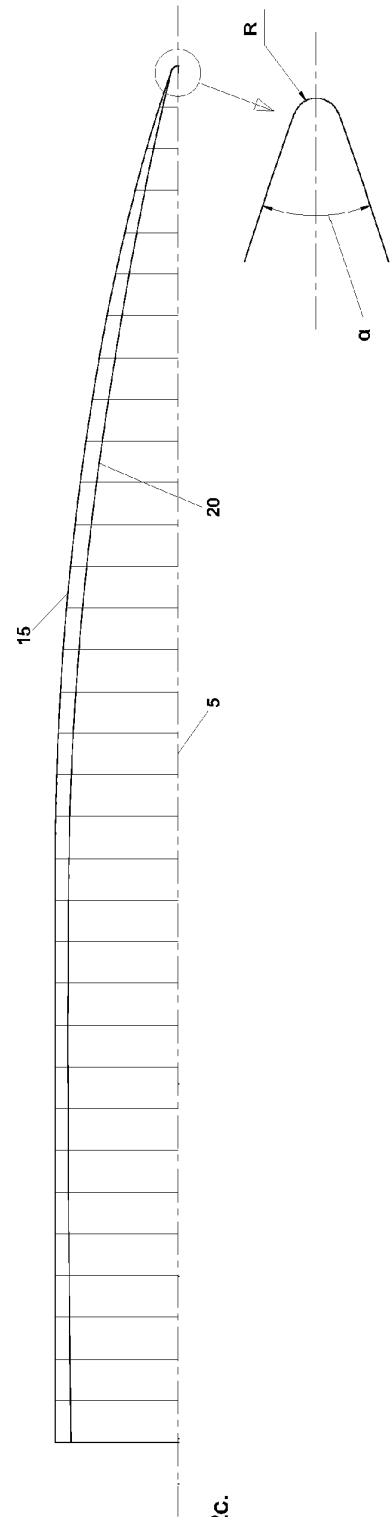


Fig. 2c.

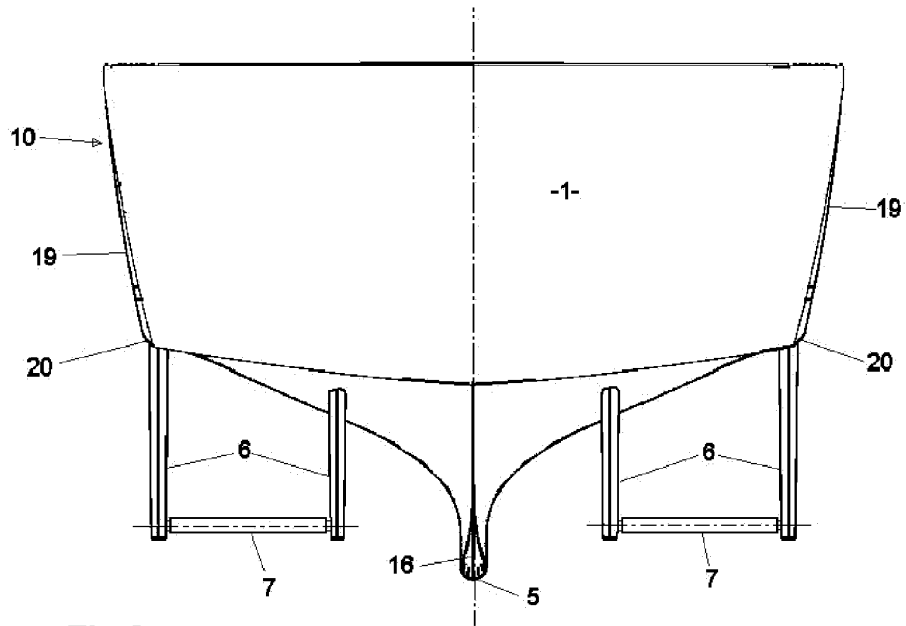


Fig. 3a.

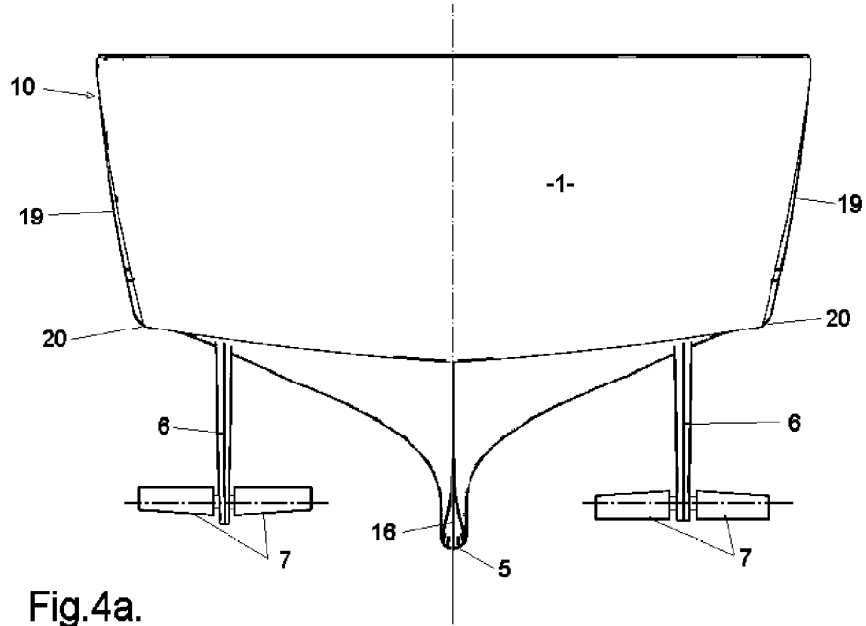


Fig. 4a.

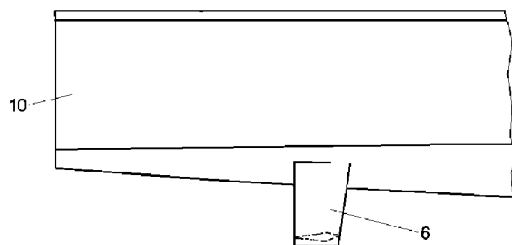


Fig. 3b.

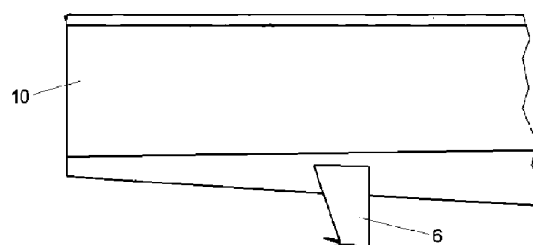


Fig. 4b.





European Patent  
Office

## EUROPEAN SEARCH REPORT

Application Number  
EP 06 11 6487

| DOCUMENTS CONSIDERED TO BE RELEVANT  |   |  |   |
|--|---|--|---|
| Category   | Citation of document with indication, where appropriate, of relevant passages   | Relevant to claim                                    | CLASSIFICATION OF THE APPLICATION (IPC)               |
| Y  | KEUNING, JA, PINKSTER, J & WALREE, F VAN:<br>18 September 2002 (2002-09-18),<br>UNIVERSITY OF NAPLES , NAPLES ,<br>XP008073064<br>* page II28, column 1, lines 8-13 *<br>* page II32, column 1, lines 29-47 *<br>-----  | 1-15   | INV.<br>B63B1/04<br>B63B1/06<br>B63B1/08<br>B63B39/06 |
| Y  | WO 2005/012075 A (ROLLS ROYCE MARINE AS<br>[NO]; MOE STIG ENDRE [NO]; VARTDAL LEIF<br>[NO]; NE) 10 February 2005 (2005-02-10)<br>* page 2, line 29 - line 31; figures 1,3 *<br>-----  | 1-6  |   |
| D,A  | KEUNING, JA, TOXOPEUS, S & PINKSTER,J:<br>"THE EFFECT OF BOWSHAPE ON THE SEAKEEPEING<br>PERFORMANCE OF A FAST MONOHULL"<br>4 September 2001 (2001-09-04), THE ROYAL<br>INSTITUTE OF NAVAL ARCHITECTS , LONDON ,<br>XP008073025<br>* page 203, column 1, lines 9-21; figure 3<br>*<br>* page 203, column 2, lines 19-28 *<br>----- | 1  |   |
| Y  | US 6 171 159 B1 (SHEN YOUNG T [US] ET AL)<br>9 January 2001 (2001-01-09)<br>* figures *<br>-----  | 7,8  |   |
| Y  | NL 9 100 048 A (SCHEEPSWERF DAMEN B V)<br>3 August 1992 (1992-08-03)<br>* abstract; figure 1 *<br>-----   | 9-15   |   |
| A  | JP 08 324485 A (HITACHI SHIPBUILDING ENG<br>CO) 10 December 1996 (1996-12-10)<br>* abstract; figures *<br>-----<br>-/--   | 9-15   |   |
| The present search report has been drawn up for all claims   |   |  |   |
| Place of search<br>The Hague   |   | Date of completion of the search<br>21 December 2006 | Examiner<br>van Rooij, Michael                        |
| CATEGORY OF CITED DOCUMENTS<br>X : particularly relevant if taken alone<br>Y : particularly relevant if combined with another document of the same category<br>A : technological background<br>O : non-written disclosure<br>P : intermediate document<br>T : theory or principle underlying the invention<br>E : earlier patent document, but published on, or after the filing date<br>D : document cited in the application<br>L : document cited for other reasons<br>& : member of the same patent family, corresponding document |   |  |   |

 1  
EPO FORM 1503 03.82 (P04031)



| DOCUMENTS CONSIDERED TO BE RELEVANT  |   |  |   |
|--|---|--|---|
| Category   | Citation of document with indication, where appropriate, of relevant passages   | Relevant to claim                                    | CLASSIFICATION OF THE APPLICATION (IPC) |
| A  | US 2005/011427 A1 (SCHMITZ STEVEN J [US] ET AL SCHMITZ SR STEVEN J [US] ET AL)<br>20 January 2005 (2005-01-20)<br>* page 1, column 1, line 11 - line 16;<br>figure 12 * | 6-15   |   |
| A  | EP 0 678 445 A1 (PETROLEUM GEO SERVICES AG [NO]) 25 October 1995 (1995-10-25)<br>* claim 12; figure 11 *  | 1  |   |
|  |   |  | TECHNICAL FIELDS SEARCHED (IPC)         |
|  |   |  |   |
| The present search report has been drawn up for all claims   |   |  |   |
| Place of search<br>The Hague   |   | Date of completion of the search<br>21 December 2006 | Examiner<br>van Rooij, Michael          |
| CATEGORY OF CITED DOCUMENTS<br>X : particularly relevant if taken alone<br>Y : particularly relevant if combined with another document of the same category<br>A : technological background<br>O : non-written disclosure<br>P : intermediate document<br>T : theory or principle underlying the invention<br>E : earlier patent document, but published on, or after the filing date<br>D : document cited in the application<br>L : document cited for other reasons<br>& : member of the same patent family, corresponding document |   |  |   |

 1  
EPO FORM 1503 03-92 (P04001)

**ANNEX TO THE EUROPEAN SEARCH REPORT  
ON EUROPEAN PATENT APPLICATION NO.**

EP 06 11 6487

This annex lists the patent family members relating to the patent documents cited in the above-mentioned European search report.  
The members are as contained in the European Patent Office EDP file on  
The European Patent Office is in no way liable for these particulars which are merely given for the purpose of information.

21-12-2006

| Patent document<br>cited in search report |    | Publication<br>date | Patent family<br>member(s)  | Publication<br>date  |
|---|----|---------------------|---|--|
| WO 2005012075                             | A  | 10-02-2005          | NONE  |  |
| US 6171159                                | B1 | 09-01-2001          | NONE  |  |
| NL 9100048                                | A  | 03-08-1992          | NONE  |  |
| JP 8324485                                | A  | 10-12-1996          | NONE  |  |
| US 2005011427                             | A1 | 20-01-2005          | AU 2004270614 A1<br>EP 1646553 A2<br>WO 2005023640 A2   | 17-03-2005<br>19-04-2006<br>17-03-2005   |
| EP 0678445                                | A1 | 25-10-1995          | AU 693858 B2<br>AU 1761395 A<br>BR 9501744 A<br>CA 2147527 A1<br>CN 1114278 A<br>DE 69504560 D1<br>DE 69504560 T2<br>DK 678445 T3<br>JP 3640428 B2<br>JP 8058674 A<br>NO 951511 A<br>NZ 270953 A<br>RU 2129505 C1<br>US 5598802 A<br>US 5711239 A<br>ZA 9503230 A | 09-07-1998<br>02-11-1995<br>14-11-1995<br>22-10-1995<br>03-01-1996<br>15-10-1998<br>02-06-1999<br>07-06-1999<br>20-04-2005<br>05-03-1996<br>23-10-1995<br>27-07-1997<br>27-04-1999<br>04-02-1997<br>27-01-1998<br>03-01-1996 |

**REFERENCES CITED IN THE DESCRIPTION**

*This list of references cited by the applicant is for the reader's convenience only. It does not form part of the European patent document. Even though great care has been taken in compiling the references, errors or omissions cannot be excluded and the EPO disclaims all liability in this regard.*

**Non-patent literature cited in the description**

- The effect of bow-shape on the seakeeping performance of a fast monohull. **KEUNING, J.A. ; TOX-OPEUS, S. ; PINKSTER, J.** Proceedings of FAST 2001 conference. September 2001, 197-206 **[0001]**