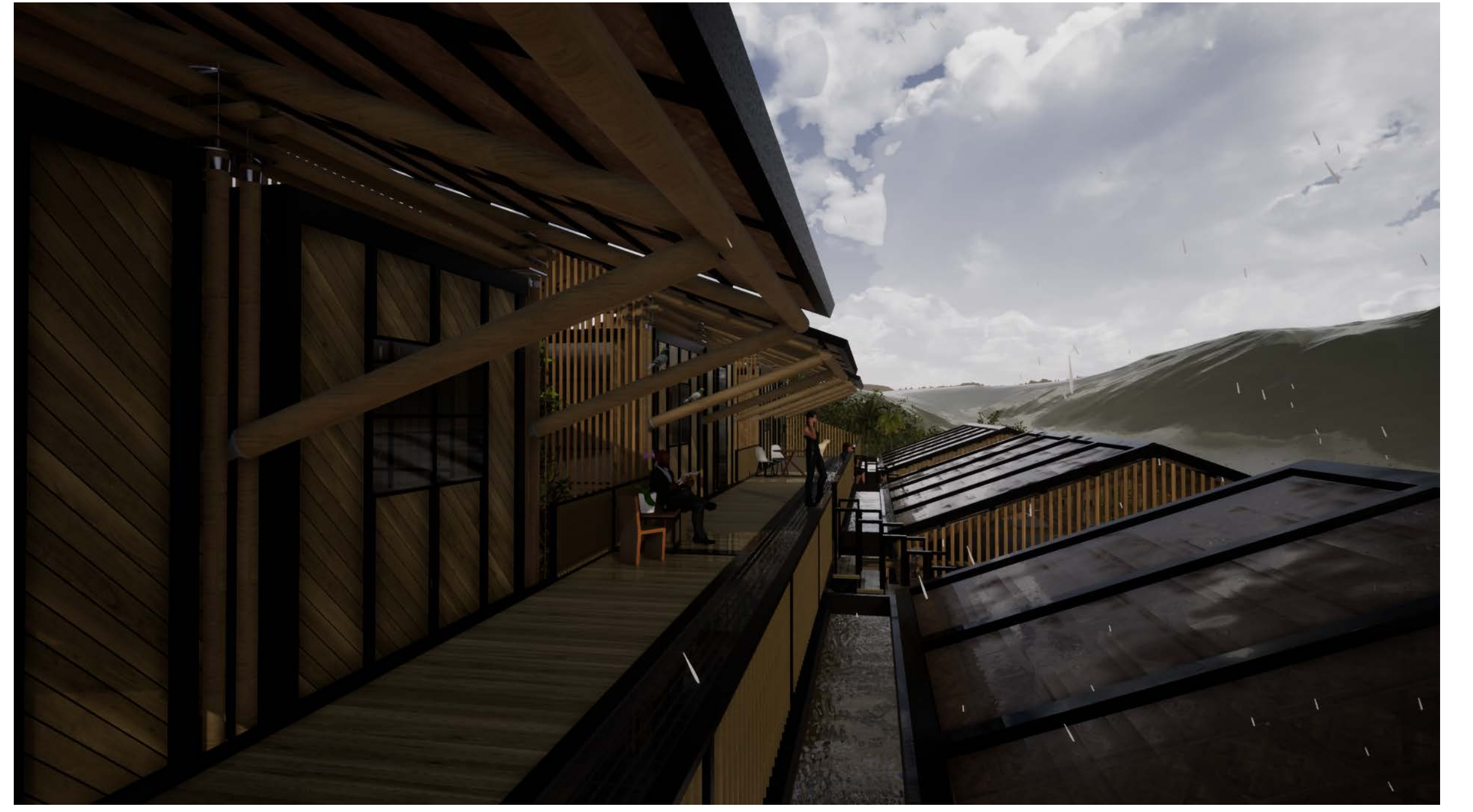
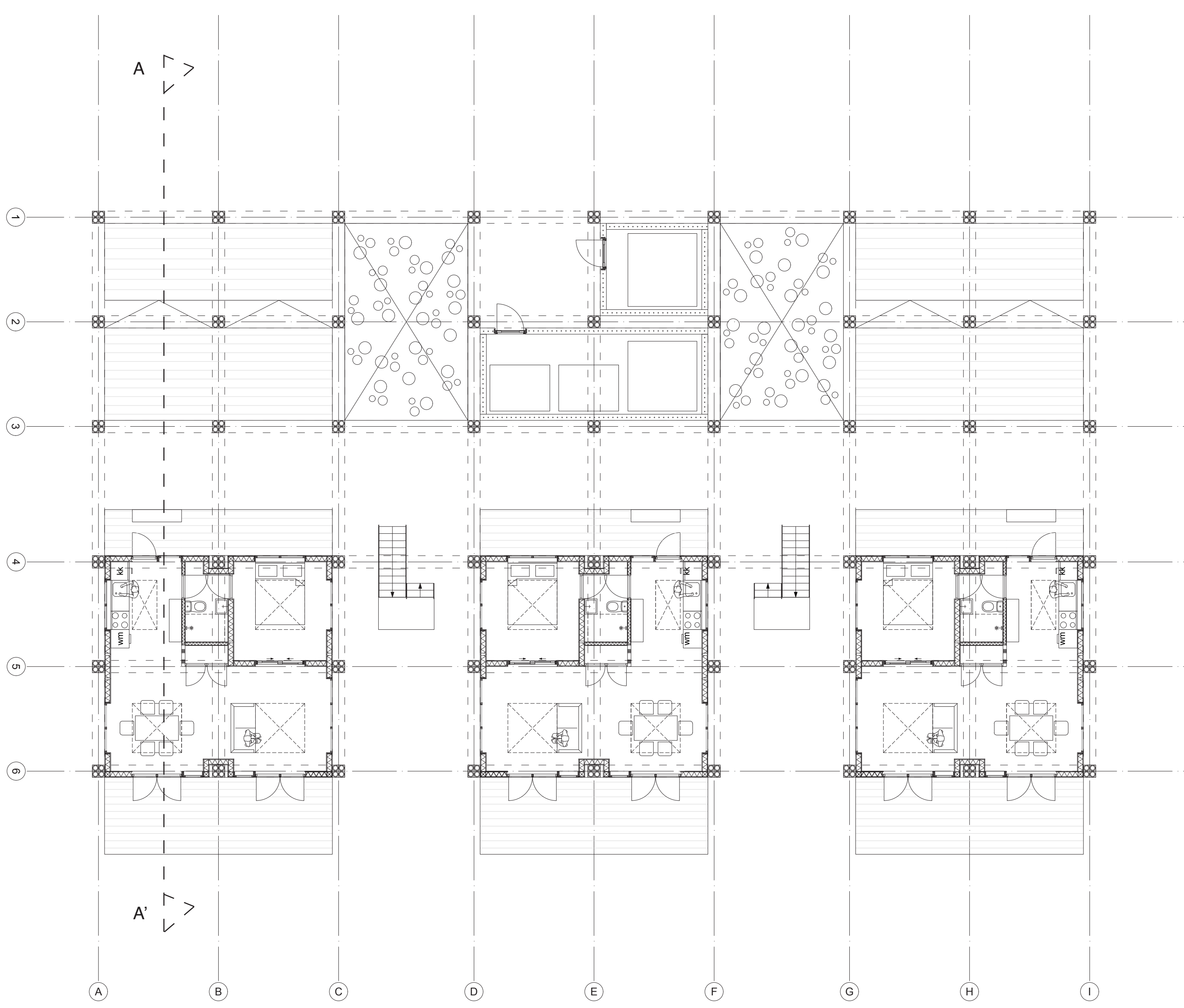


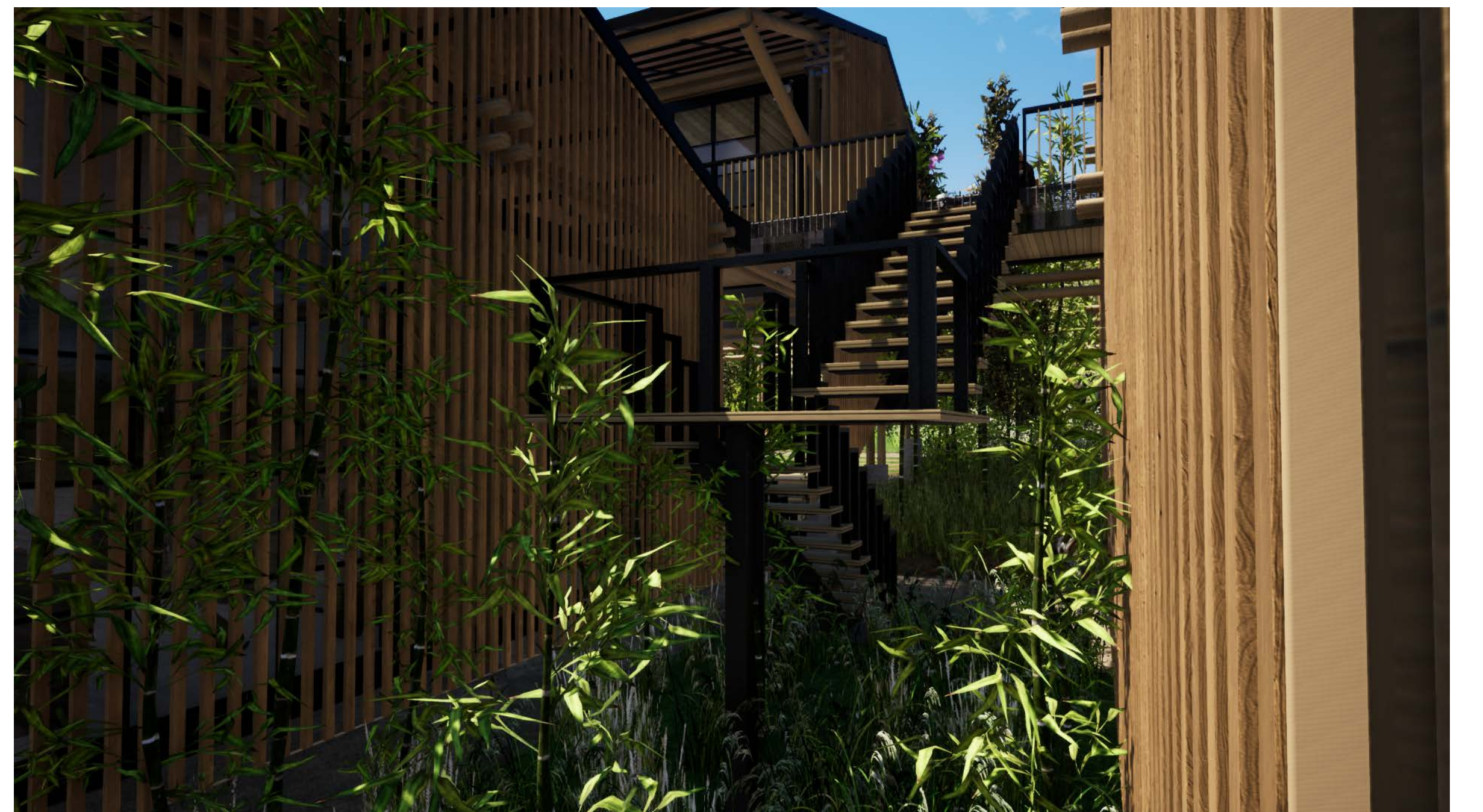
SECOND FLOOR PLAN 1:100



VIEW OF THE GALLERY ON THE SECOND FLOOR. NOTICE STEEL GRID FLOOR. VISUALLY CONNECTING THE FIRST FLOOR AND SECOND FLOOR GALLERY.



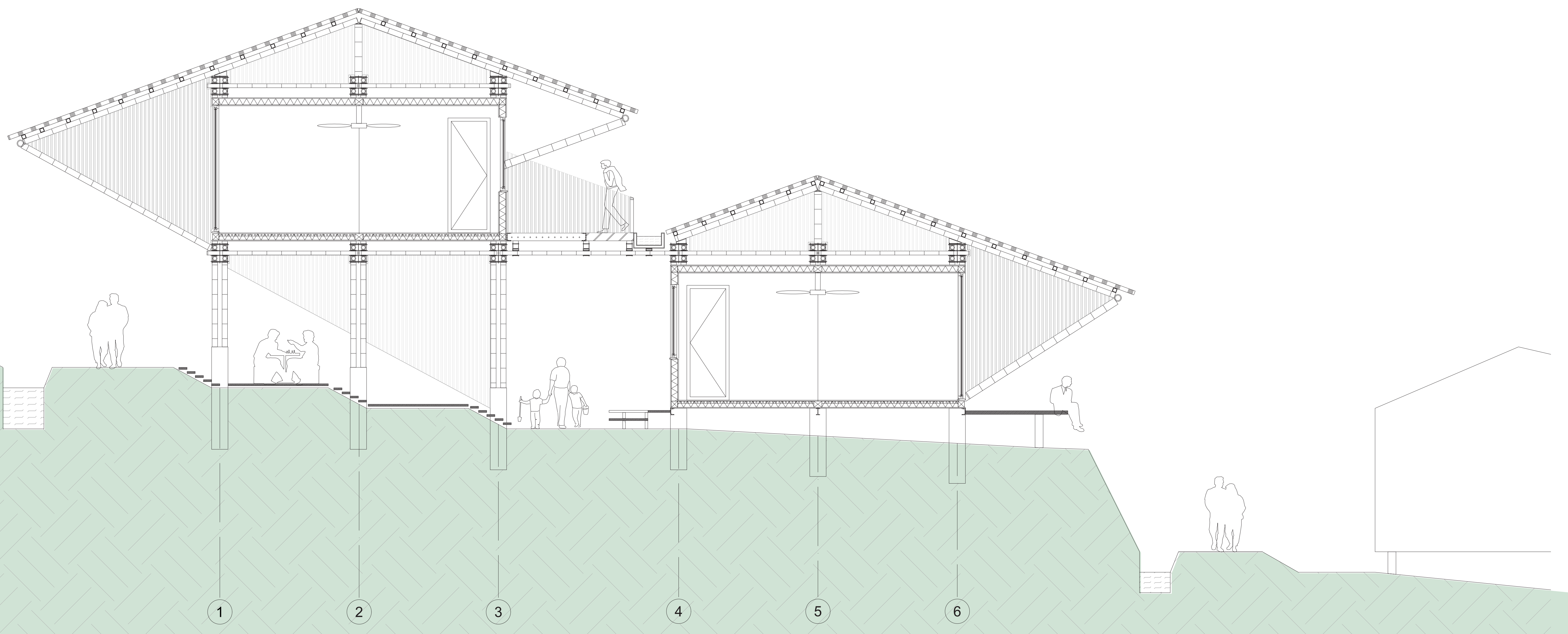
FIRST FLOOR PLAN 1:100



VIEW ON STAIRCASE AND SECOND FLOOR GALLERY. BAMBOO GROWING BETWEEN THE HOUSES.



VIEW FROM THE FRONT DOOR PORCH ON OUTDOOR LIVING ROOM AND FIRST FLOOR GALLERY.



A-A' SECTION 1:50



WEST ELEVATION



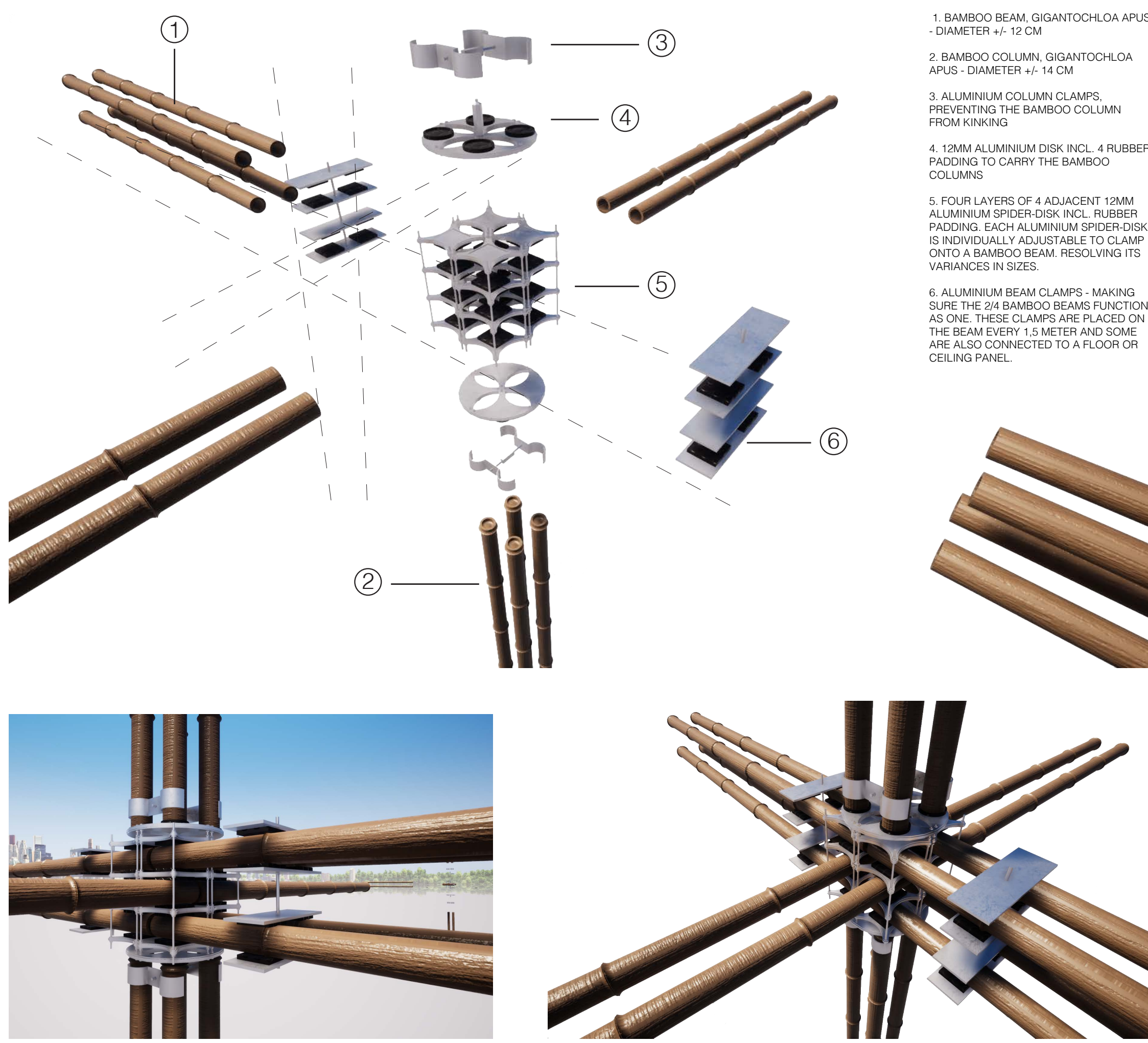
EAST ELEVATION



NORT FACADE, PERSPECTIVE FROM THE PARK WITHIN THE NEIGHBOURHOODS

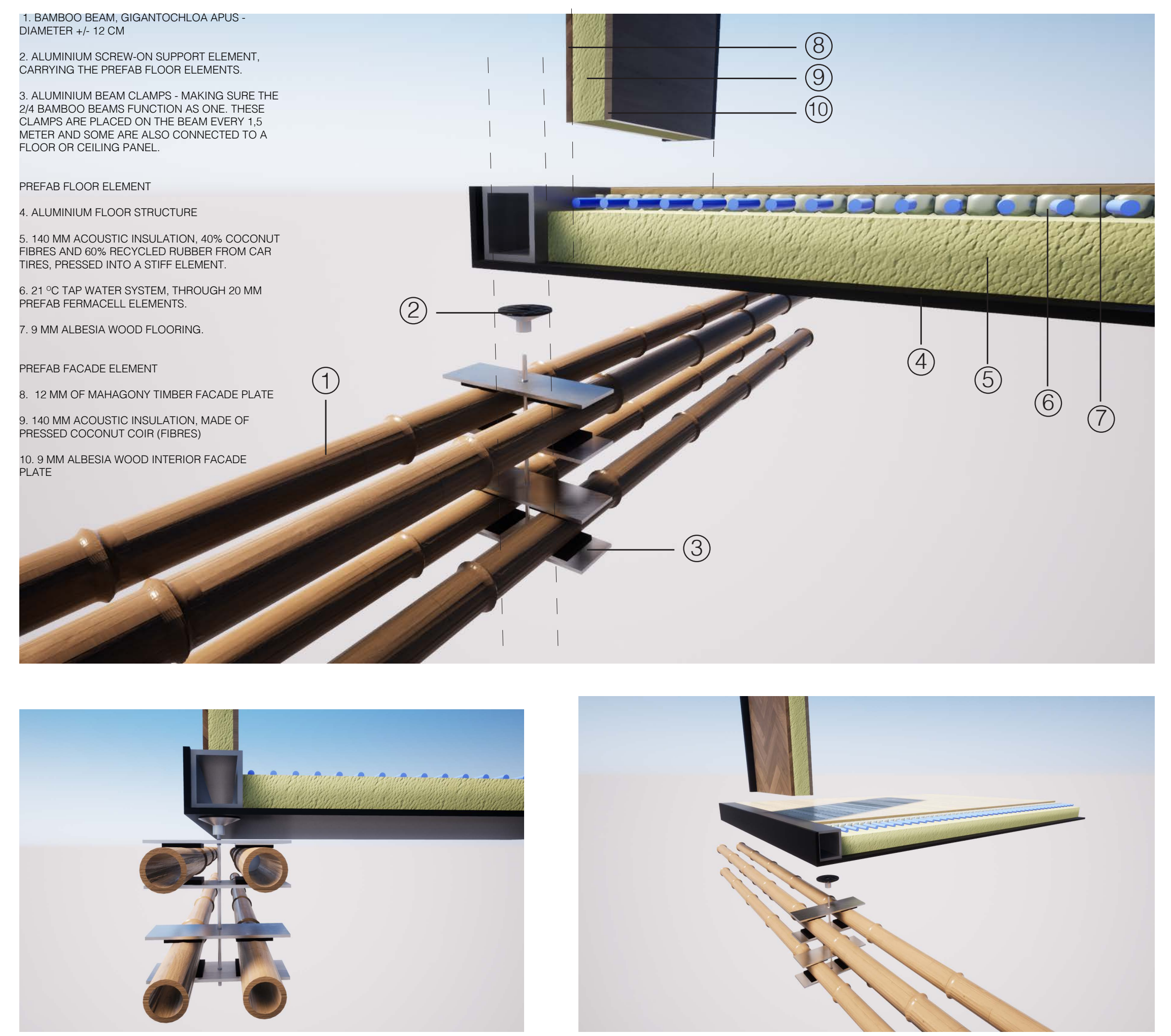


SOUTH ELEVATION



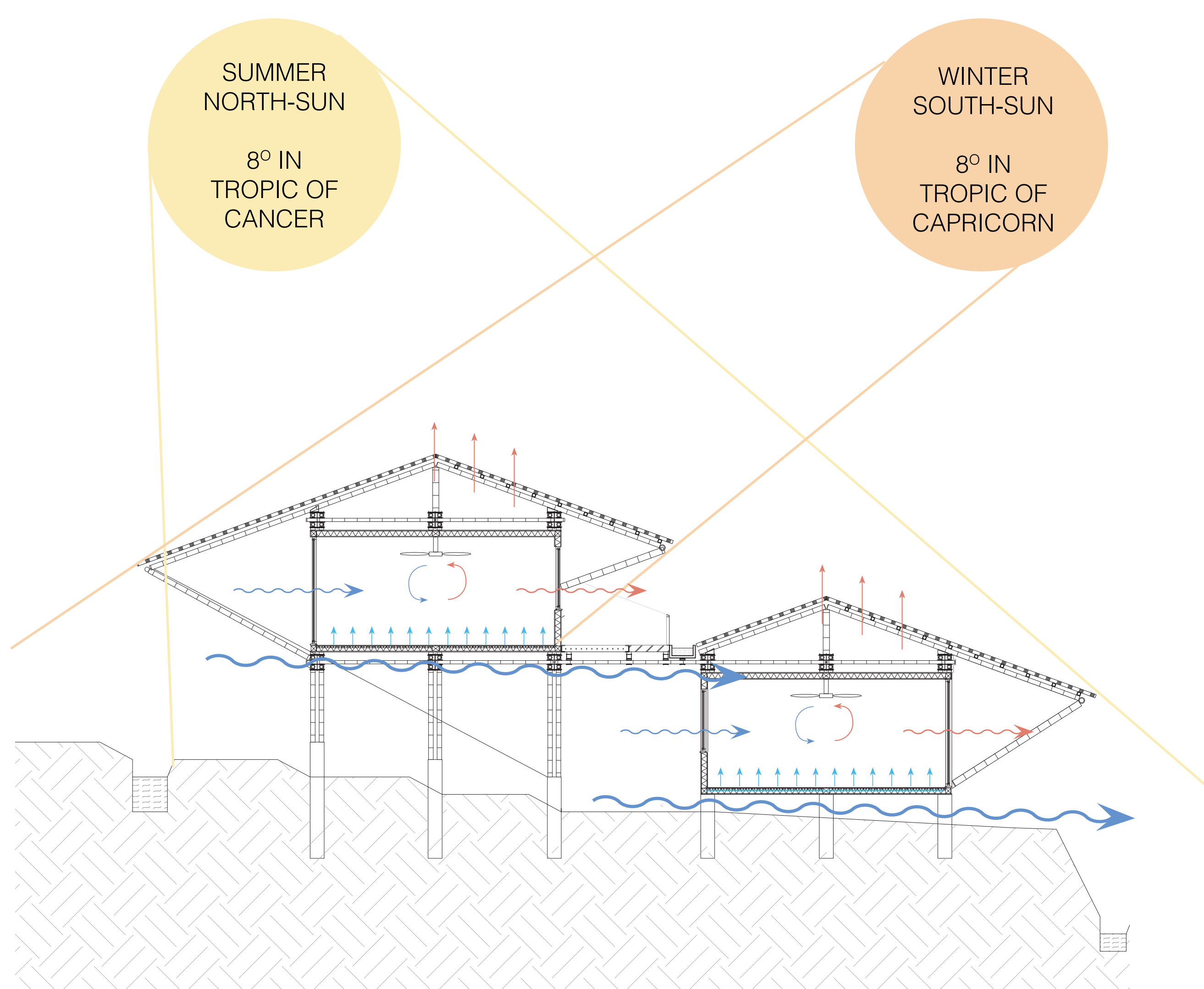
STRUCTURAL DETAIL 1

1. BAMBOO BEAM, GIGANTOCHLOA APUS - DIAMETER \varnothing 12 CM
2. BAMBOO COLUMN, GIGANTOCHLOA APUS - DIAMETER \varnothing 14 CM
3. ALUMINIUM COLUMN CLAMPS, PREVENTING THE BAMBOO COLUMN FROM KINKING
4. 12MM ALUMINIUM DISK INCL. 4 RUBBER PADDING TO CARRY THE BAMBOO COLUMN
5. FOUR LAYERS OF 4 ADJACENT 12MM ALUMINIUM SPIDER DISK INCL. RUBBER PADDING. EACH ALUMINIUM SPIDER DISK IS INDIVIDUALLY ADJUSTABLE TO CLAMP ONTO A BAMBOO BEAM, RESOLVING ITS VARIANCES IN SIZES.
6. ALUMINIUM BEAM CLAMPS, MAKING SURE THE 2/4 BAMBOO BEAMS FUNCTION AS ONE. THESE CLAMPS ARE PLACED ON THE BEAM EVERY 1.5 METERS AND SOME ARE ALSO CONNECTED TO A FLOOR OR CEILING PANEL.

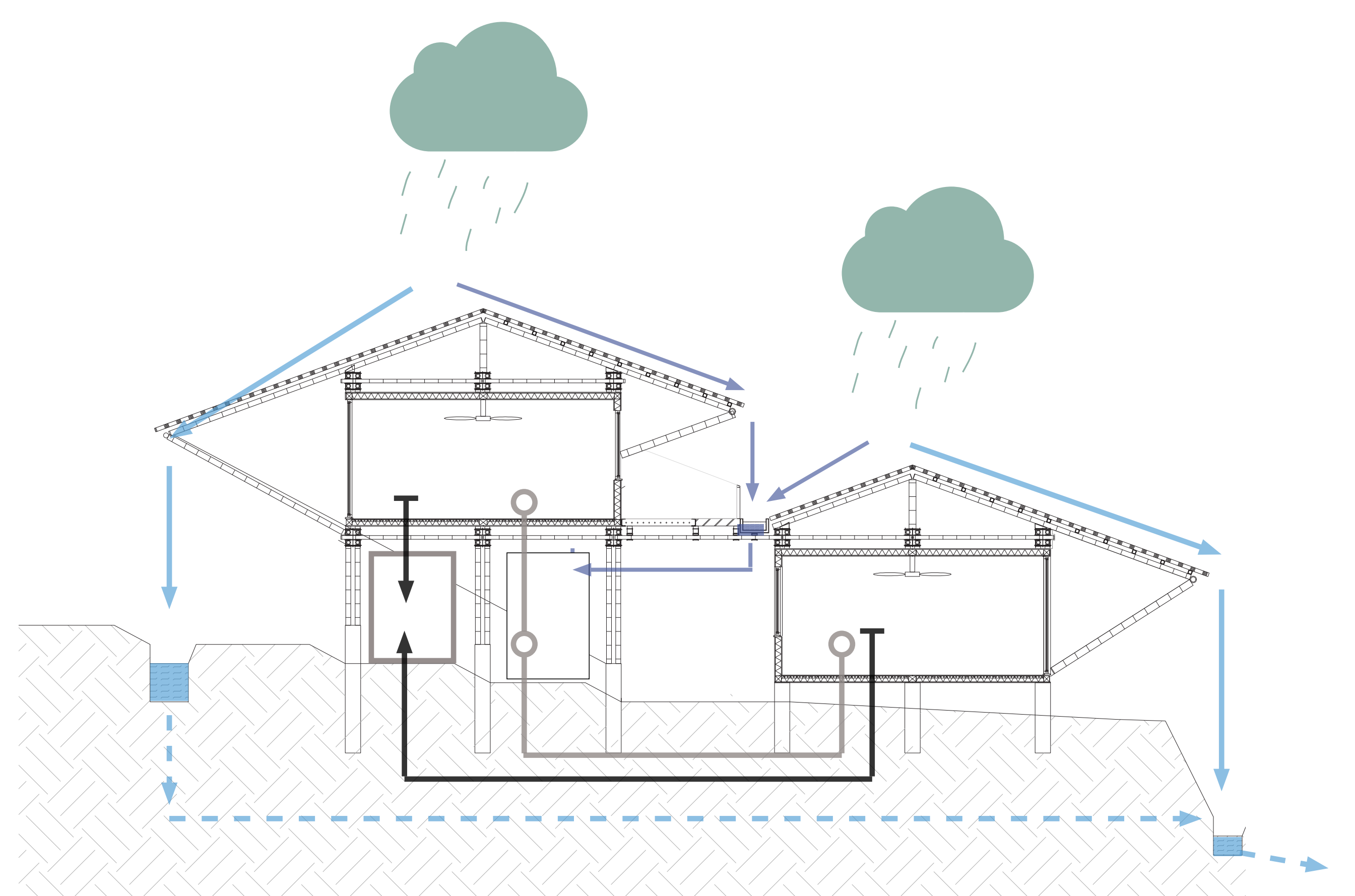


STRUCTURAL DETAIL 2, FLOOR ATTACHED ON STRUCTURE

1. BAMBOO BEAM, GIGANTOCHLOA APUS - DIAMETER \varnothing 12 CM
 2. ALUMINIUM SCREW-ON SUPPORT ELEMENT, CARRYING THE PREFAB FLOOR ELEMENTS.
 3. ALUMINIUM BEAM CLAMPS - MAKING SURE THE 2/4 BAMBOO BEAMS FUNCTION AS ONE. THESE CLAMPS ARE PLACED ON THE BEAM EVERY 1.5 METERS AND SOME ARE ALSO CONNECTED TO A FLOOR OR CEILING PANEL.
- PREFAB FLOOR ELEMENT
4. ALUMINIUM FLOOR STRUCTURE
 5. 140 MM ACOUSTIC INSULATION, 40% COCONUT FIBRES AND 60% RECYCLED RUBBER FROM CAR TIRES, PRESSED INTO A STIFF ELEMENT.
 6. 21 °C TAP WATER SYSTEM, THROUGH 20 MM PREFAB PERIMETER ELEMENTS
 7. 9 MM ALBESIA WOOD FLOORING.
- PREFAB FACADE ELEMENT
8. 12 MM OF MAHAGONY TIMBER FACADE PLATE
 9. 140 MM ACOUSTIC INSULATION, MADE OF PRESSED COCONUT COIR (FIBRES)
 10. 9 MM ALBESIA WOOD INTERIOR FACADE PLATE



PASSIVE CLIMATE STRATEGIES + 20 DEGREES TAPWATER FLOOR SYSTEM + A FAN AS SINGLE ACTIVE COOLING SYSTEM



RAIN WATER, GREY WATER AN BLACK WATER STRATEGIES