

Conceptual design of pre-treatment units for co-electrolysis of CO₂ and water

Vos, Josephine; Ramirez, Andrea; Pérez-Fortes, Mar

DOI

[10.1016/B978-0-443-15274-0.50503-5](https://doi.org/10.1016/B978-0-443-15274-0.50503-5)

Publication date

2023

Document Version

Final published version

Published in

Computer Aided Chemical Engineering

Citation (APA)

Vos, J., Ramirez, A., & Pérez-Fortes, M. (2023). Conceptual design of pre-treatment units for co-electrolysis of CO₂ and water. In *Computer Aided Chemical Engineering* (pp. 3153-3158). (Computer Aided Chemical Engineering; Vol. 52). Elsevier. <https://doi.org/10.1016/B978-0-443-15274-0.50503-5>

Important note

To cite this publication, please use the final published version (if applicable). Please check the document version above.

Copyright

Other than for strictly personal use, it is not permitted to download, forward or distribute the text or part of it, without the consent of the author(s) and/or copyright holder(s), unless the work is under an open content license such as Creative Commons.

Takedown policy

Please contact us and provide details if you believe this document breaches copyrights. We will remove access to the work immediately and investigate your claim.

Green Open Access added to TU Delft Institutional Repository

'You share, we take care!' - Taverne project

<https://www.openaccess.nl/en/you-share-we-take-care>

Otherwise as indicated in the copyright section: the publisher is the copyright holder of this work and the author uses the Dutch legislation to make this work public.

Conceptual design of pre-treatment units for co-electrolysis of CO₂ and water

Josephine Vos^a, Andrea Ramirez^a, Mar Pérez-Fortes^a

^aDepartment of Engineering Systems and Services, Faculty of Technology, Policy and Management, Delft University of Technology, Jaffalaan 5, 2628 BX Delft, The Netherlands.

Abstract

Reaching our climate goals will require urgent advancements in the development of fossil-free technologies. Solid-oxide electrolysis (SOE) at high-temperature is a promising candidate for combining CO₂ utilization and renewable electricity use. Explorative techno-economic analyses are being performed to understand the full plant design requirements for integrated SOE systems. However, there is still a lack of understanding of the potential impact that the pre-treatment of CO₂ will have on the overall design and economics of a SOE-based system. To address this knowledge gap, as a first step, the process model of the pre-treatment units needed to purify CO₂ from a bioethanol plant is developed in Aspen Plus in the current work. Based on the preliminary results of this paper, the equipment costs mainly stem from the units related to the removal of sulfur (~65%) and alcohols (~32%). The energy costs are almost entirely related to the cryogenic distillation step required for the removal of non-condensable gases (~96%).

Keywords: solid-oxide electrolysis, co-electrolysis, syngas, pre-treatment, ex-ante techno-economic analysis, low carbon technologies

1. Introduction

Net-zero CO₂ emissions must be reached by 2050 to reduce the disastrous effects of climate change (IEA, 2020). Carbon dioxide electrochemical reduction (CO₂ER) has the potential to mitigate CO₂ emissions as it combines CO₂ utilization and renewable (intermittent) electricity for the synthesis of chemicals. A specific type of CO₂ER technology is the solid-oxide electrolyzer (SOE). Co-electrolysis of CO₂ and water in a SOE has a technology readiness level (TRL) between 5-7, and it can be used to generate syngas (Zheng et al., 2017). To reach higher TRLs and eventually large-scale commercial deployment, explorative techno-economic analyses (TEAs) are underway to better understand the full plant design requirements (for example, Gao et al., 2020; Herz et al., 2018).

SOE TEAs assume that future CO₂-based plants will be operated using CO₂ from industrial point sources or direct air capture (DAC). It is also often assumed that this CO₂ stream is pure and available at the gate of the SOE plant. However, this may not be the case. The CO₂ purity level of several industrial sources can vary between ~30-96 mol% (Verma et al., 2019). Some SOE TEAs mention that purifying the CO₂ will be needed before entering the electrolyzer as experimental studies have indicated that even a slight concentration of impurities (for instance, sulfur or heavy metals) can alter the catalytic performance significantly or deactivate the catalyst entirely (Gao et al., 2020; Kibria et

al., 2019). However, neither the target purity levels nor the required types of purification steps have been specified or modeled in SOE TEAs literature.

Therefore, there is currently a lack of understanding of the potential impact of pre-treatment units on the design and economics of SOE plants. To address this knowledge gap, in this study an ex-ante TEA of the pre-treatment units for a CO₂ stream from a bioethanol plant for co-electrolysis via SOE to produce syngas is performed. The aim of this paper is therefore twofold: 1) to propose a conceptual design for pre-treatment units of CO₂ for future SOE plants, and 2) to evaluate the plant performance. In the upcoming section, the scope, modeling, and evaluation steps are described. In the subsequent sections, the preliminary results are discussed.

2. Methodology

2.1. Scope

The current techno-economic analysis consists of a ‘gate-to-gate’ ex-ante assessment. Figure 1a presents an overview of the overall SOE-based plant, and the current system boundaries. The electricity is considered to be continuous and acquired from the grid.

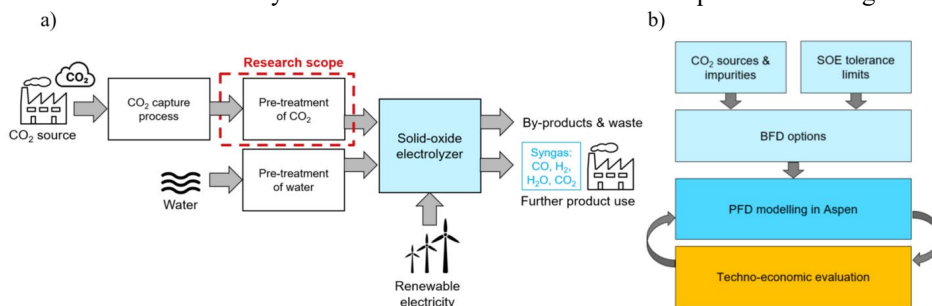


Figure 1: a) System boundary definition, focus on pre-treatment of CO₂. b) Methodological steps for modeling and evaluation (BFD: block flow diagram, PFD: process flow diagram).

The methodological framework for this research follows the approach for analyzing future ‘N-of-a-kind’ (NOAK) plants (Roussanaly et al., 2021). Since this research involves an ex-ante analysis of a low TRL technology, this means that the entire analysis is based on a ‘what-if’ approach where the SOE is treated as if it was already commercially available today. It is assumed that the performance at industrial scale is the same as currently demonstrated in lab conditions. The model considers a CO₂-based plant located in Northwestern Europe and installed in 2019. The scale of the plant corresponds to the production of 1 tonne of pure CO₂ per year (8000 hours).

2.2. Data collection, modeling & evaluation

The methodology followed for the data collection, modeling and evaluation of the pre-treatment configuration for future SOE plants is illustrated in Figure 1b. A targeted literature review was performed to collect information regarding (i) possible CO₂ sources and their compositions, and (ii) the electrolyzer’s tolerance levels per contaminant (considering a SOE Ni/YSZ cermet fuel electrode). Assumptions were made based on existing literature for solid-oxide fuel cells and water electrolysis, and information from experts in the field. Next, a screening of potential cleaning technologies for the removal of contaminants was done based on heuristics, temperature and pressure considerations to create a block flow diagram (BFD). For the current bioethanol case, the pilot plant

study from McKaskle et al., the research on purification units from Quevedo et al., and a CO₂ purification patent by Gupta et al. served as a starting point (Gupta, 1999; McKaskle, 2018; Quevedo, 2021). The subsequent process flow diagram (PFD) was created in Aspen Plus. The model was validated, unit-by-unit, using data from literature. The Aspen model was used to generate data on the equipment dimensions, mass and energy balances. Finally, key performance indicators (KPIs), i.e. CO₂ losses during the process, energy needs, and bare equipment costs, were calculated.

3. Results & discussion

The main impurities in the selected bio-based CO₂ stream are non-condensable gases (NCDS), such as oxygen and nitrogen, as well as sulfur components, water, alcohols, and other hydrocarbons (see Table 1). The investigation into the target purity levels for SOE revealed that even trace levels of sulfur components are likely to negatively affect the degradation rate of the electrodes (Caliandro, 2018; Rinaldi, 2019). The other identified contaminants from the bioethanol plant are expected to be less problematic for the SOE, but experimental data on the effect of these components is still limited in the current literature, for instance, for alcohols. In the current work, it is considered a conservative goal to reach at least ppb-level of the contaminants that are less known.

Table 1: Overview composition of the CO₂ stream from a bioethanol plant (i.e., the fermentation off-gas from an ethanol plant using corn as the biomass source) including major and trace impurities alongside tolerance limits for SOE (Caliandro, 2018; McKaskle, 2018; National Academies of Sciences, Engineering, 2022; Rinaldi, 2019; Yokokawa et al., 2008).

Composition	Bioethanol plant	Unit used	Degradation type	Tolerable amount	Unit used
CO ₂	90	%	C-poisoning		
CO	1	ppm	C-poisoning		
H ₂ O	5	ppm			
CH ₄	3	ppm	C-poisoning		
SO _x	1	ppm	S-poisoning	<2	ppm
NO _x	1	ppm			
O ₂	100	ppm		<5	%
H ₂ S	1	ppm	S-poisoning	~0.05	ppm
N ₂	98768	ppm			
Ar	-	ppm		~100	μmol/mol
Heavy metals	-	ppm	Metals	-	ppb-level
Cl	-	ppm	Cl-poisoning	<5	ppm
Alcohols	3-950	ppm			
Other hydrocarbons	1	ppm	C-poisoning	~2	μmol/mol
Aromatics (benzene, toluene, xylene)	3	ppm			
Carbonyl sulfide	1	ppm	S-poisoning	<2	ppm
Dimethylsulfide	1	ppm	S-poisoning	<2	ppm
Ethers	1	ppm			
Ketons	1	ppm			
Mercaptans	1	ppm			

Figure 2 shows the design of the preliminary CO₂ purification train for the removal of the contaminants listed in Table 2. In total, four different purification sections are needed to achieve this level of purity, namely (i) alcohols removal, (ii) sulfur removal, (iii) moisture removal, and (iv) non-condensable gases removal. The global property method Redlich-Kwong-Soave (RKS-BM) was selected in Aspen Plus, which is suitable for gas processes.

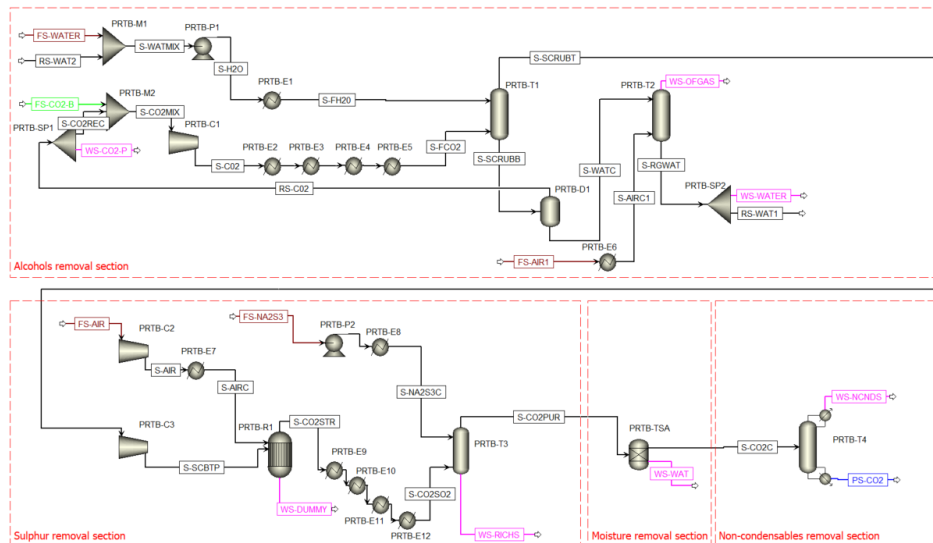


Figure 2: Aspen PFD for the purification of a CO₂ stream from a bioethanol plant to reach SOE purity levels.

The CO₂ from the bio-ethanol plant enters the process at 38°C and 0.9 atm (McKaskle, 2018) and is conditioned to 20°C and 10 bar before being sent to a pressurized water scrubbing tower (RadFrac column – PRTB-T1) for the removal of alcohols (Abu Seman & Harun, 2019). The water scrubbing tower removes the traces of alcohols as well as ~25% of the CO₂, therefore the removed CO₂ is separated from the scrubbing water via a flash drum (Flash2 – PRTB-D1) and is recycled back (RS-CO₂). The scrubbing water is regenerated using a counter-current hot air stream in a second tower (RadFrac column – PRTB-T2). Next, the CO₂ stream is mixed with air in a catalytic oxidation unit (REquil – PRTB-R1) operating at 400°C and 22 bar to remove the hydrogen sulfide and COS by converting them into sulfur dioxide and water (Gupta, 1999). The sulfur dioxide is removed by using an aqueous solution of Na₂SO₃ in an absorption tower (RadFrac – PRTB-T3) at 38°C and 22 bar. Then, the remaining moisture is removed using a temperature swing adsorption (TSA) unit consisting of 2-4 columns (Gupta, 1999). The TSA was modeled in Aspen Plus using a separator block (i.e., black-box model for which the energy and economic performance are not yet evaluated in the current work). Finally, the non-condensable gases are removed via cryogenic distillation (RadFrac column – PRTB-T4) at 22 bar.

Table 2 summarizes the preliminary techno-economic results of the CO₂ purification train from Figure 2. The CO₂ from the bioethanol source was purified to 99.9984 wt% with water, carbon monoxide, methane, and argon as trace impurities. The purity level is in agreement with the tolerance limits for SOE (as shown in Table 1) and matches the specifications of food-grade CO₂ (i.e., 99.9% (Parker Hannifin Ltd, 2022)). During the purification process, about ~21% of the CO₂ inlet stream is lost as gaseous emissions despite recycling efforts. Possibilities for further improvement of CO₂ recycling should be investigated to improve the process in the future.

In terms of cost, the total bare equipment costs of the purification train are almost 3M€. The analysis of the different purification sections reveals that the equipment costs related to the removal of sulfur (~65%) and alcohols (~32%) are responsible for most of the total

equipment cost. The energy costs are almost entirely related to the removals of non-condensable gases (~96%) due to the cryogenic distillation step.

Table 2: Energy and economic preliminary results for the purification of the bioethanol CO₂ stream. The results are stated per tonne of clean CO₂ (VHPS: very high pressure steam at 100 bar, HPS: high pressure steam at 51 bar, MPS: medium pressure steam at 21 bar, LPS: low pressure steam at 5.5 bar, LLPS: low low pressure steam at 3.9 bar, CW: cooling water ~25-40°C, CHILLED: chilling water ~5-7.5°C, R50: refrigerant methane ~-162°C, NA: energy and equipment costs not available for the TSA unit, NCDS refers to non-condensable elements such as nitrogen, argon and oxygen).

Section	Energy needs									Energy costs	Bare equipment cost
	VHPS	HPS	MPS	LPS	LLPS	CW	CHILLED	R50	Electricity		
Unit	GJ/t	GJ/t	GJ/t	GJ/t	GJ/t	GJ/t	GJ/t	GJ/t	kWh/t	€/t	k€
Alcohols	-	-	-0.06	-0.10	0.30	0.23	0.04	-	115.29	10.80	930
Sulfur	-	1.00	-0.31	-0.31	0.75	0.76	-	-	554.29	48.95	1875
Moisture	NA	NA	NA	NA	NA	NA	NA	NA	NA	NA	NA
NCDS	-	-	-	-	2.80	-	-	3.80	-	1618.11	101
Total	-	1.00	-0.38	-0.41	3.86	0.99	0.04	3.80	669.58	1677.86	2907

4. Conclusion & future work

A preliminary ex-ante techno-economic assessment of the pre-treatment units for purifying CO₂ from a bioethanol plant has been performed, as a first step towards the modeling of a complete SOE-based plant for co-electrolysis of CO₂ and water to produce syngas. This study aimed to propose an initial PFD and to analyze selected KPIs. Required CO₂ purity levels for SOE were identified based mostly on solid oxide fuel cells and water electrolysis literature. Four different purification sections were proposed to purify the CO₂ stream resulting in a CO₂ purity grade similar to food-grade CO₂. The removal of sulfur (~65%) and alcohols (~32%) were the largest contributors to the overall equipment costs. The removal of non-condensable gases via cryogenic distillation was the main contributor to the overall energy costs (~96%). In future work, trade-offs will be further investigated by modeling the TSA unit using RadFrac columns and the possibilities for recycling flows, heat integration, and waste valorization will be further considered. Also, the purification of the water inlets stream will be analyzed.

Acknowledgements

This research receives funding from the project "Addressing the multiscale challenge of CO₂ electrochemical reduction", NWO ECCM tenure track grant (project number ECCM.TT.009), and "Sustainable design of multiscale CO₂ electrochemical conversion", MVI grant (ECCM.TT.MVITU.006).

References

- Abu Seman, N., & Harun, N. (2019). Simulation of pressurized water scrubbing process for biogas purification using Aspen Plus. *IOP Conference Series: Materials Science and Engineering*, 702(1). <https://doi.org/10.1088/1757-899X/702/1/012040>
- Caliandro, P. (2018). *Identification of Solid Oxide Cell Elementary Processes by Electrochemical Impedance Spectroscopy PAR*. PhD thesis number 8389 ÉCOLE POLYTECHNIQUE FÉDÉRALE DE LAUSANNE.

- Gao, N., Quiroz-Arita, C., Diaz, L. A., & Lister, T. E. (2020). Intensified co-electrolysis process for syngas production from captured CO₂. *Journal of CO₂ Utilization*, 43(May 2020), 101365. <https://doi.org/10.1016/j.jcou.2020.101365>
- Gupta, H. &. (1999). *Patent CO₂ purification system*. 15(2), 1–23. US patent number: 99108085.4.
- Herz, G., Reichelt, E., & Jahn, M. (2018). Techno-economic analysis of a co-electrolysis-based synthesis process for the production of hydrocarbons. *Applied Energy*, 215(February), 309–320. <https://doi.org/10.1016/j.apenergy.2018.02.007>
- IEA. (2020). Energy Technology Perspectives. *Energy Technology Perspectives*. <https://doi.org/10.1787/9789264109834-en>
- Kibria, G., Edwards, J. P., Gabardo, C. M., Dinh, C., Seifitokaldani, A., Sinton, D., & Sargent, E. H. (2019). *Electrochemical CO₂ Reduction into Chemical Feedstocks : From Mechanistic Electrocatalysis Models to System Design*. 1807166, 1–24. <https://doi.org/10.1002/adma.201807166>
- McKaskle. (2018). Evaluation of Carbon Dioxide Capture Options from Ethanol Plants. *University of Illinois, Circular 5*, ILLINOIS STATE GEOLOGICAL SURVEY Prairie Research Institute University of Illinois at Urbana-Champaign, <http://www.isgs.illinois.edu>.
- National Academies of Sciences, Engineering, and M. (2022). *Carbon Dioxide Utilization Markets and Infrastructure : Status and Opportunities : A First Report (2022)*. <https://doi.org/10.17226/26703>
- Parker Hannifin Ltd. (2022). *CO₂ polishing for the sparkling beverage industry*, Accessed via https://www.parker.com/literature/donnick%20hunter%20Industrial%20Division/Static%20Literature%20Files%20PDFs/Beverage/174004466_EN.PDF.
- Quevedo, 2021. *Techno-economic and environmental comparative assessment of two renewable methanol production routes*, TU Delft master thesis, accessible via <http://resolver.tudelft.nl/uuid:923d22dd-b711-46ff-9fc3-a3ba695e31bd>.
- Rinaldi, G. (2019). *Long-term evolution of solid oxide fuel and electrolysis cell 3-D microstructure*. PhD thesis number 296. ÉCOLE POLYTECHNIQUE FÉDÉRALE DE LAUSANNE. <http://infoscience.epfl.ch/record/265161>
- Roussanaly, S., Rubin, E. S., Van Der Spek, M., Booras, G., Berghout, N., Fout, T., Garcia, M., Gardarsdottir, S., Nair Kuncheekanna, V., Matuszewski, M., McCoy, S., Morgan, J., Mohd Nazir, S., & Ramirez, A. (2021). *Towards improved guidelines for cost evaluation of carbon capture and storage*.
- Verma, S., Lu, S., & Kenis, P. J. A. (2019). Co-electrolysis of CO₂ and glycerol as a pathway to carbon chemicals with improved technoeconomics due to low electricity consumption. *Nature Energy*, 4(6), 466–474. <https://doi.org/10.1038/s41560-019-0374-6>
- Yokokawa, H., Tu, H., Iwanschitz, B., & Mai, A. (2008). Fundamental mechanisms limiting solid oxide fuel cell durability. *Journal of Power Sources*, 182(2), 400–412. <https://doi.org/10.1016/j.jpowsour.2008.02.016>
- Zheng, Y., Wang, J., Yu, B., Zhang, W., Chen, J., Qiao, J., & Zhang, J. (2017). A review of high temperature co-electrolysis of H₂O and CO₂ to produce sustainable fuels using solid oxide electrolysis cells (SOECs): Advanced materials and technology. *Chemical Society Reviews*, 46(5), 1427–1463. <https://doi.org/10.1039/c6cs00403b>