

FILM & MUSIC CENTER

Transformation of the Baudartius College

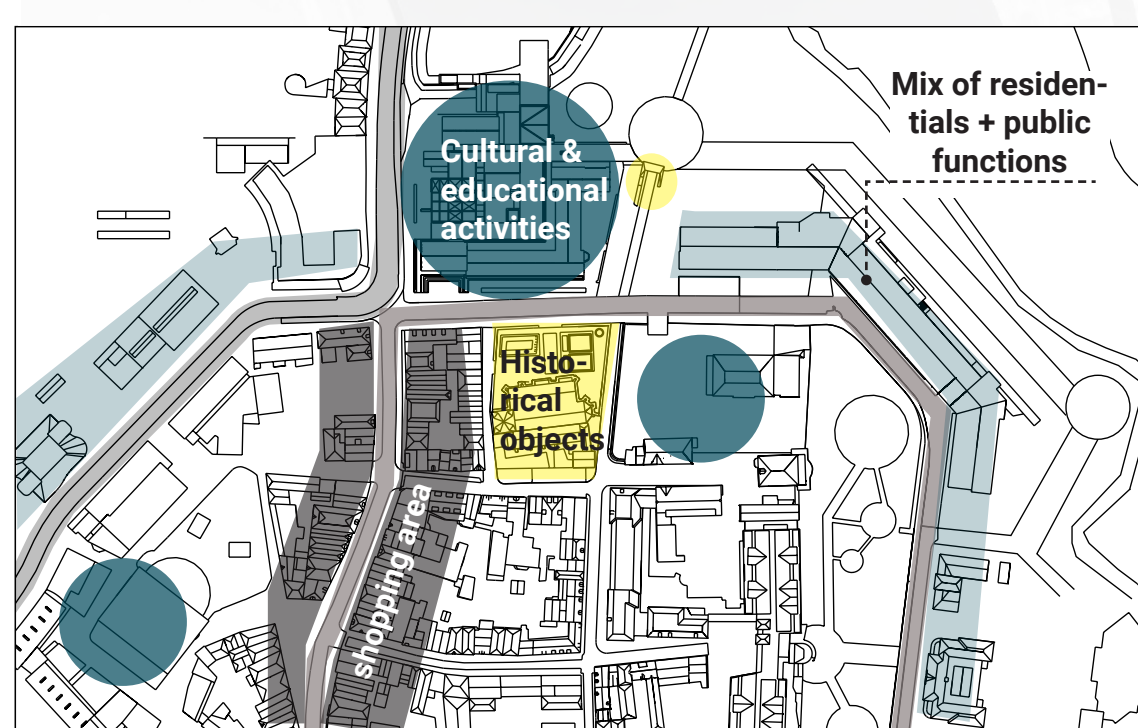
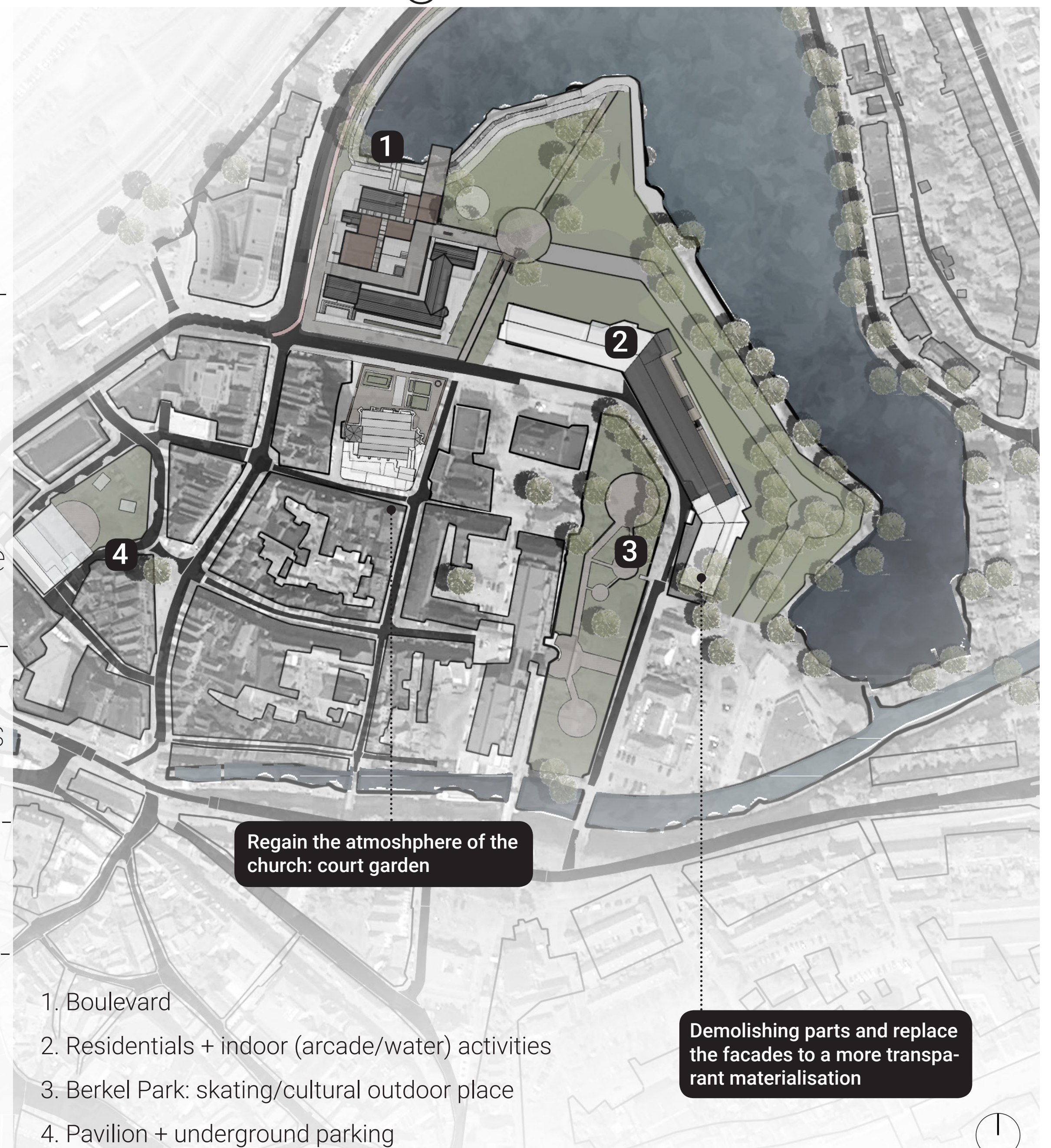
My My Ngo
The Netherlands

Revitalising Nieuwstad

Nieuwstad currently deals with vacancy and a significant number of old people. Moreover, younger generation only goes to the city center for shopping, and in the evening to a few places in Nieuwstad for leisure. To revitalize Nieuwstad, new public functions - with young people as target group- are proposed in the existing buildings. These functions will activate the existing public spaces and its surrounding structures. The former harsh border between the city and the lake/park act in the new plan as a transition zone which improves the current connection between the city center and Nieuwstad. A film & music center is introduced to stimulate and develop film

cultural activities. The present Luxor film theater will move in the future Baudartius and expand with two movie halls, a film education center and spaces for live performances.

The original 1950 (L-shaped) building is a post-war architecture that has remarkable Delftse School elements in the facades. After the 1950s, the school dealt with many expansions resulting in a confusing layout and poor indoor spaces that lack daylight. The design of the film & music center consists of different functions in volumes that propose direction, scaling, view lines and continuous roof shape - resulting in a harmonious architectural language between the new and existing structure.



Urban zones - different characters/identities

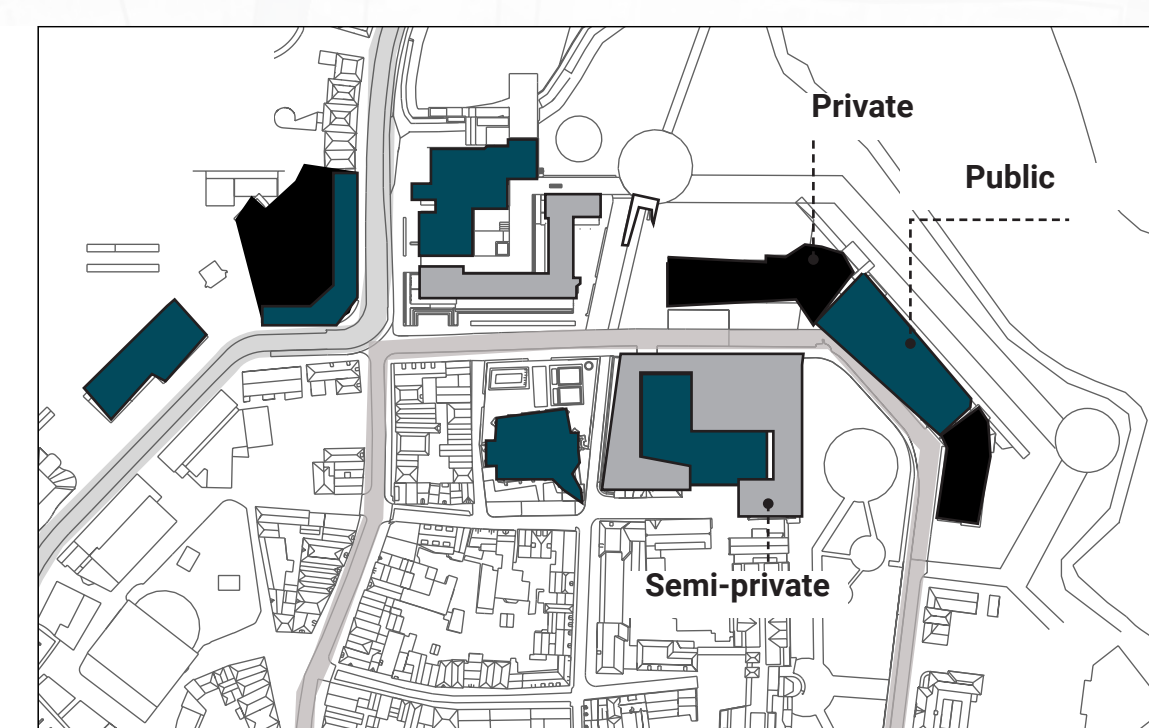


Fig.2 - Proposal public/semi/private functions

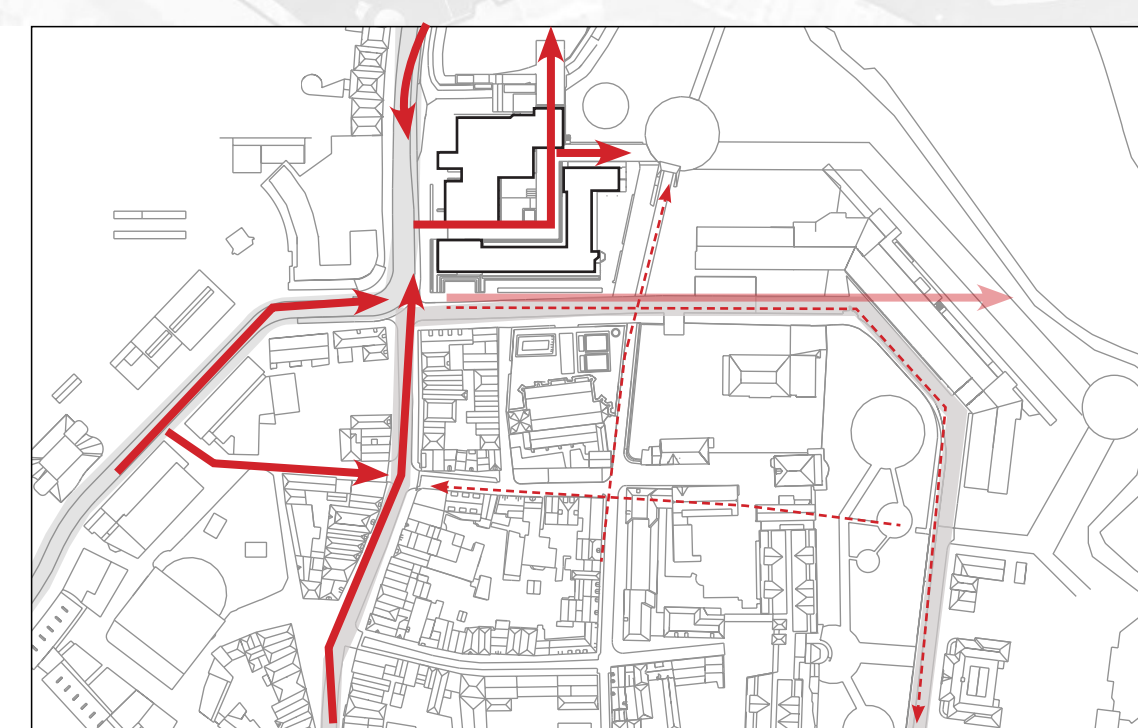
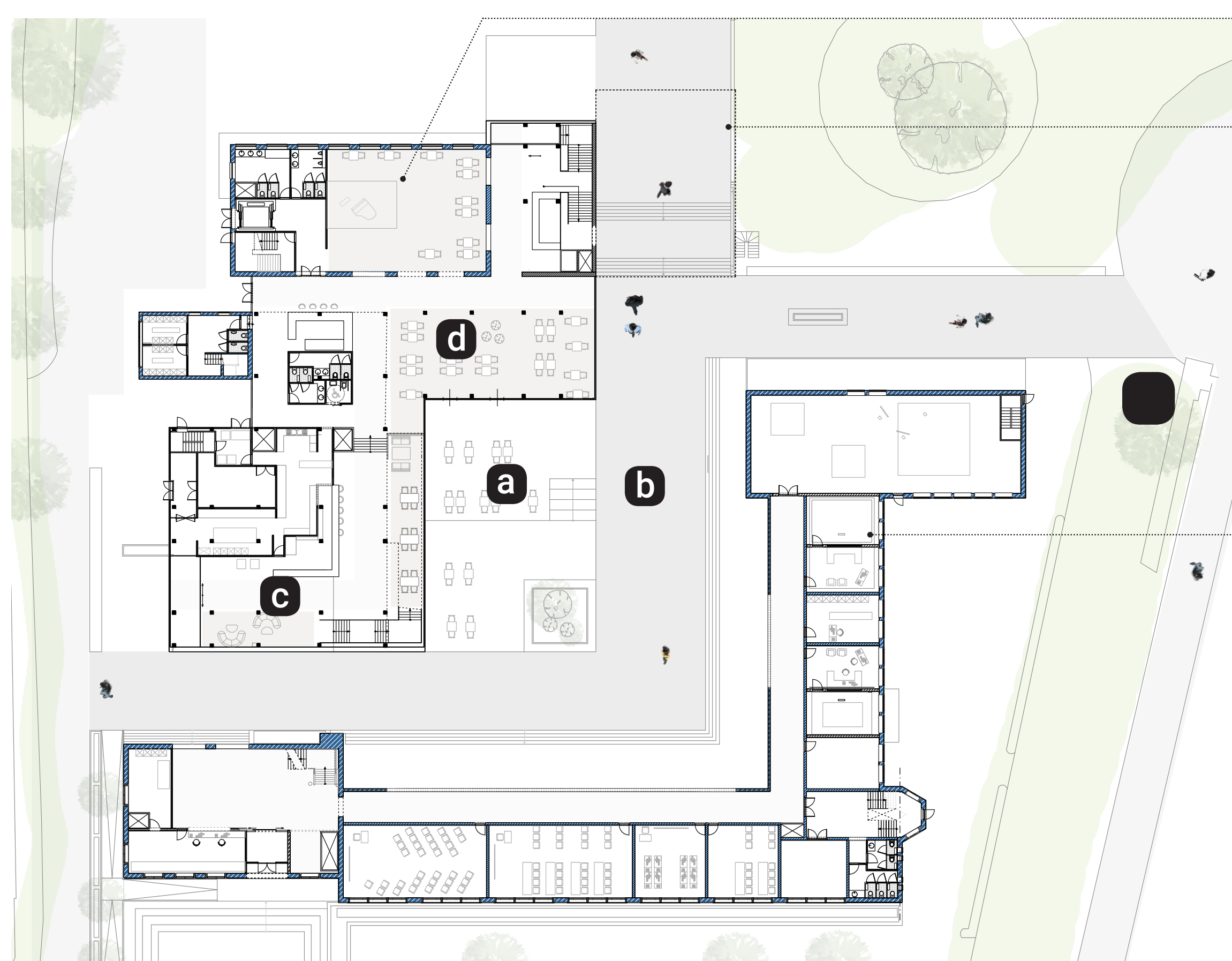


Fig.3 - The additional routing



Fig.4 - Connection public green spaces



Ground floor plan

In this floor plan, I introduce a new routing through the building to connect with its surroundings but also to connect the main functions in the layout.

Dining room II - Live performance/ background piano



(Lifted) Music jazz club - a passage to the lake

a. Terrace

b. Path/pavement

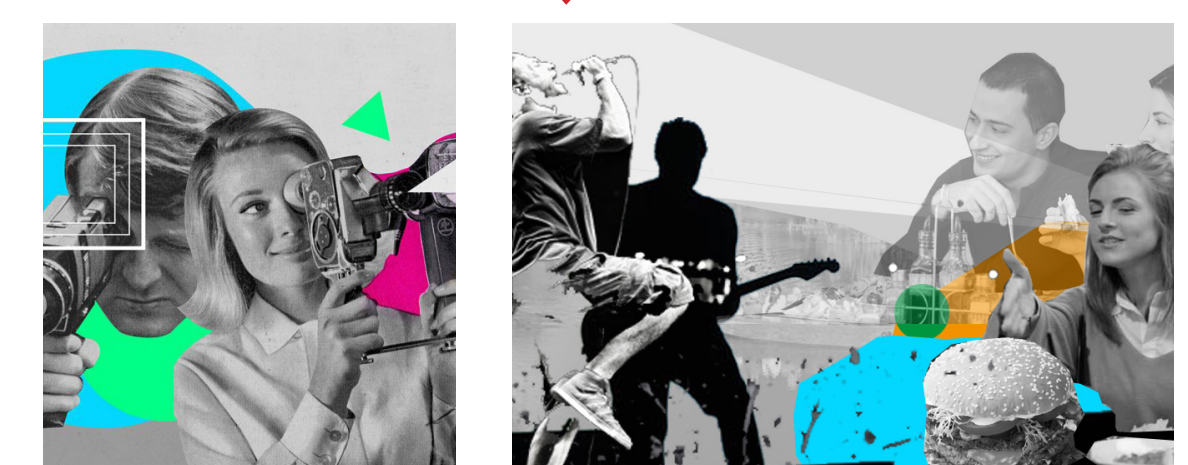
c. Film house foyer

d. Restaurant

Video & audio studios (for education or rental)



Workshop/classrooms



The current & the next

The society deals with changes, as well as heritage buildings that have to adapt to this digital era. This future Baudartius is an added time layer, showing the continuous changing society - resulting in a design of an introvert character that communicates with the extravert combined composition.

FILM & MUSIC CENTER

Architectural concept

My My Ngo
The Netherlands



Fig.5 - Impression bird-view

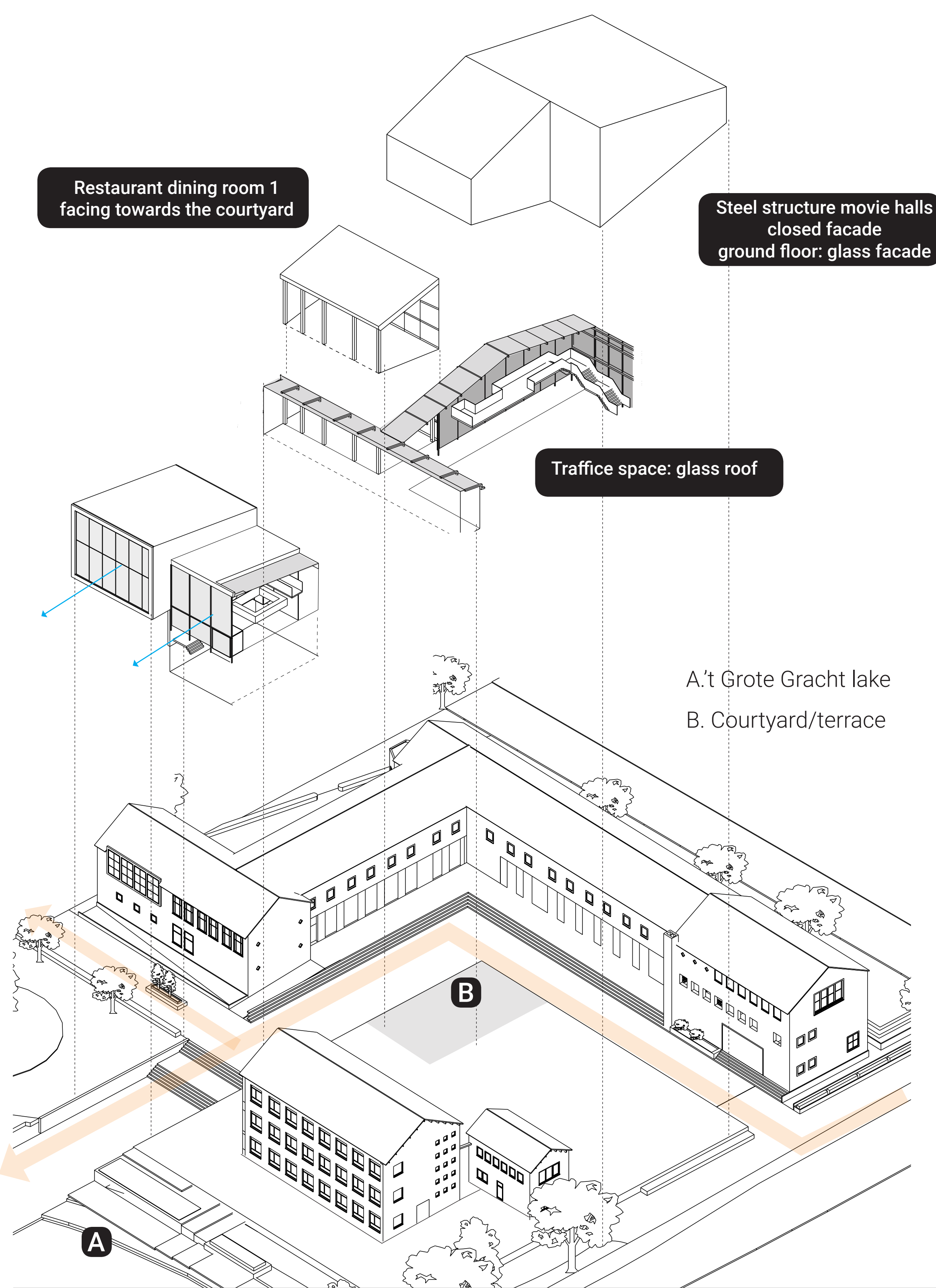


Fig.6 - Exploded view

Fig.12 - Section movie halls

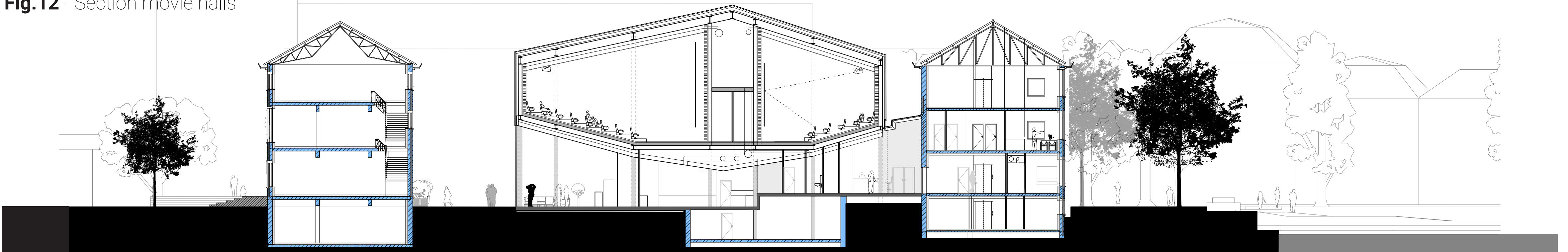


Fig.7 - View from lake

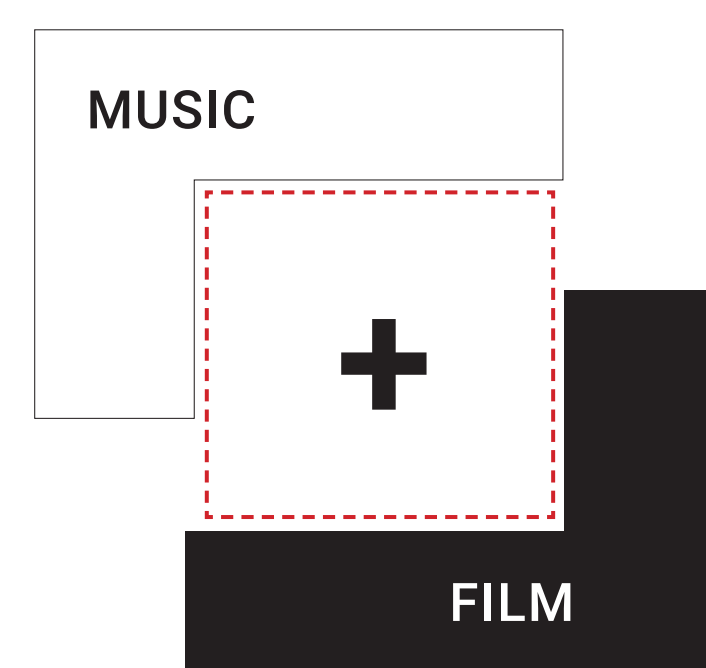


Fig.8 - Diagram program

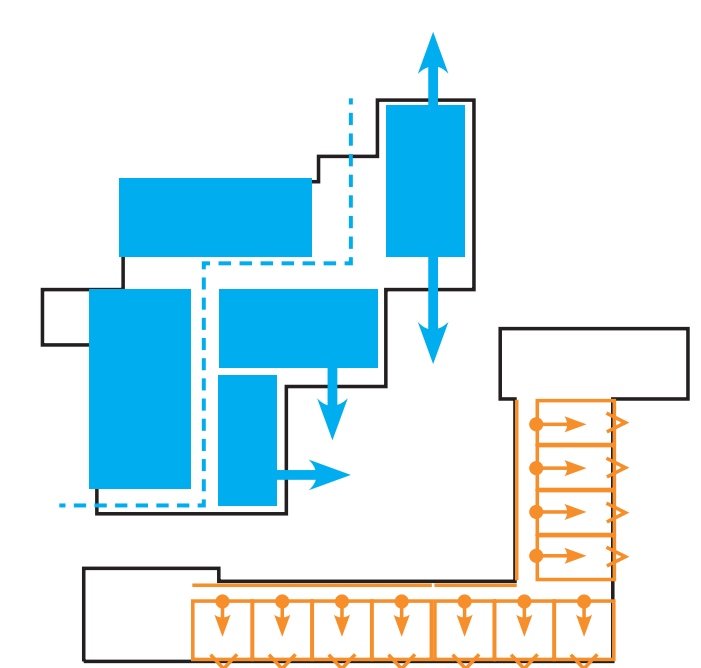


Fig.9 - layout plan concept

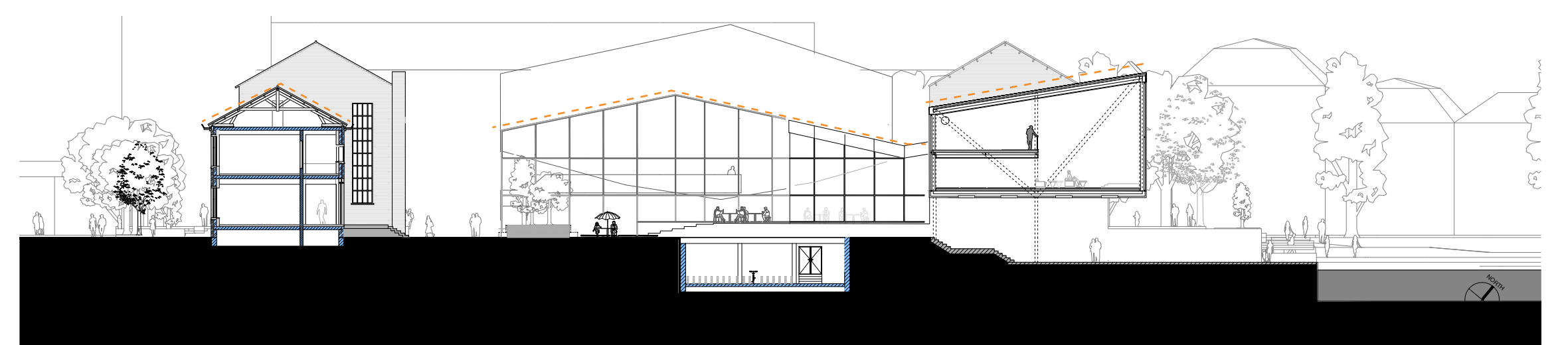
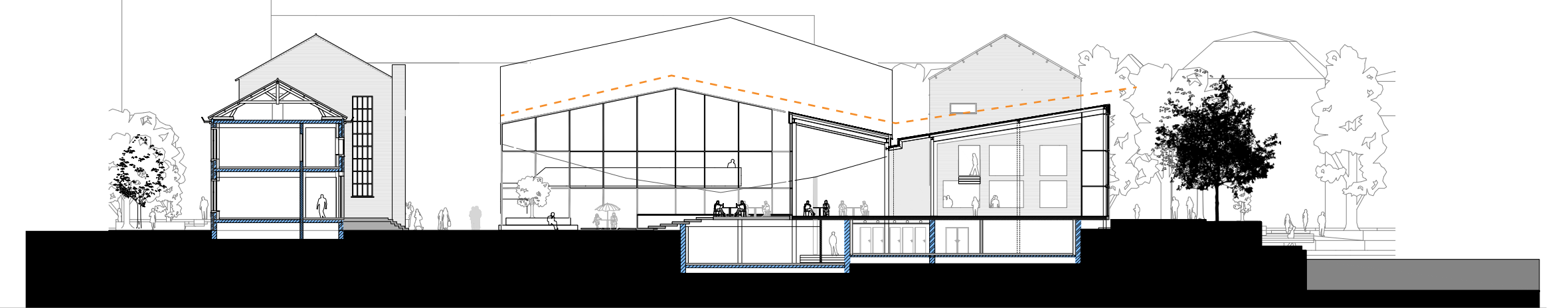


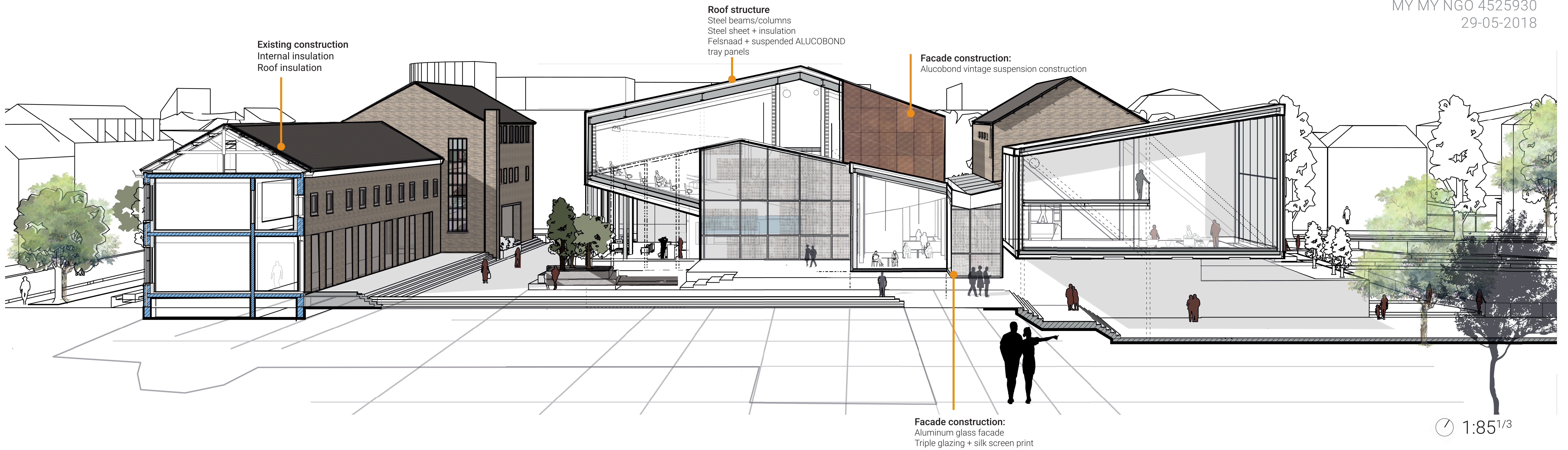
Fig.10 - Section music club

Fig.11 - Section restaurant/foyer



FILM & MUSIC ENTERTAINMENT CENTRE

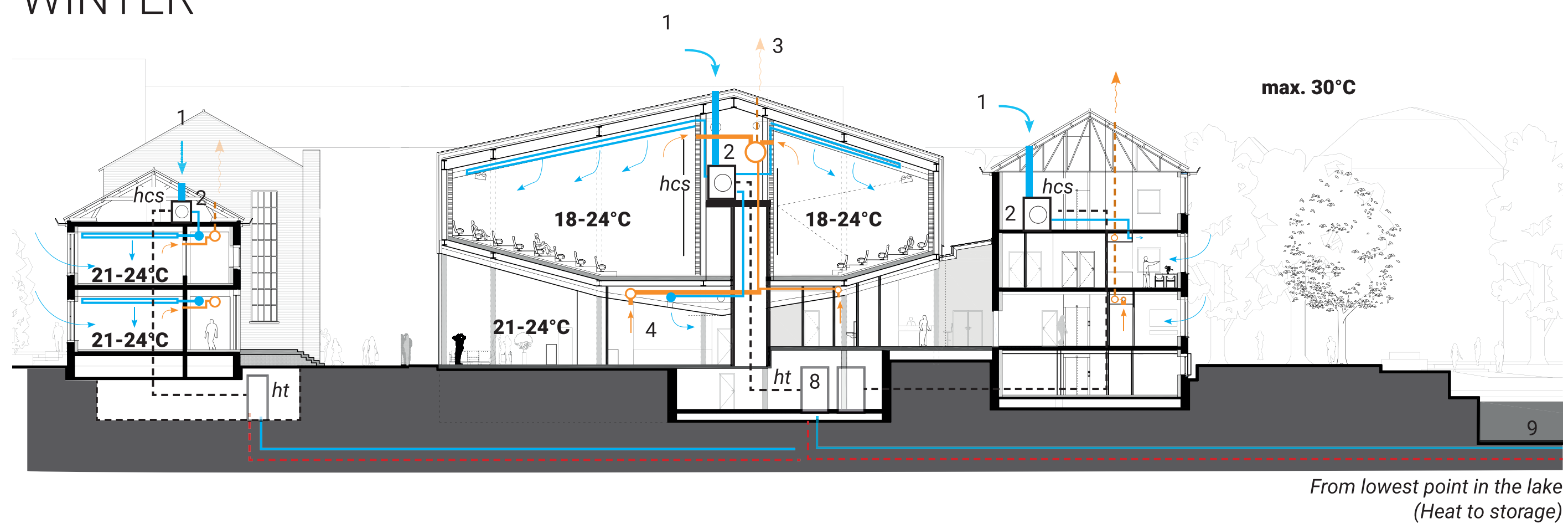
MY MY NGO 4525930
29-05-2018



INSTALLATIONS

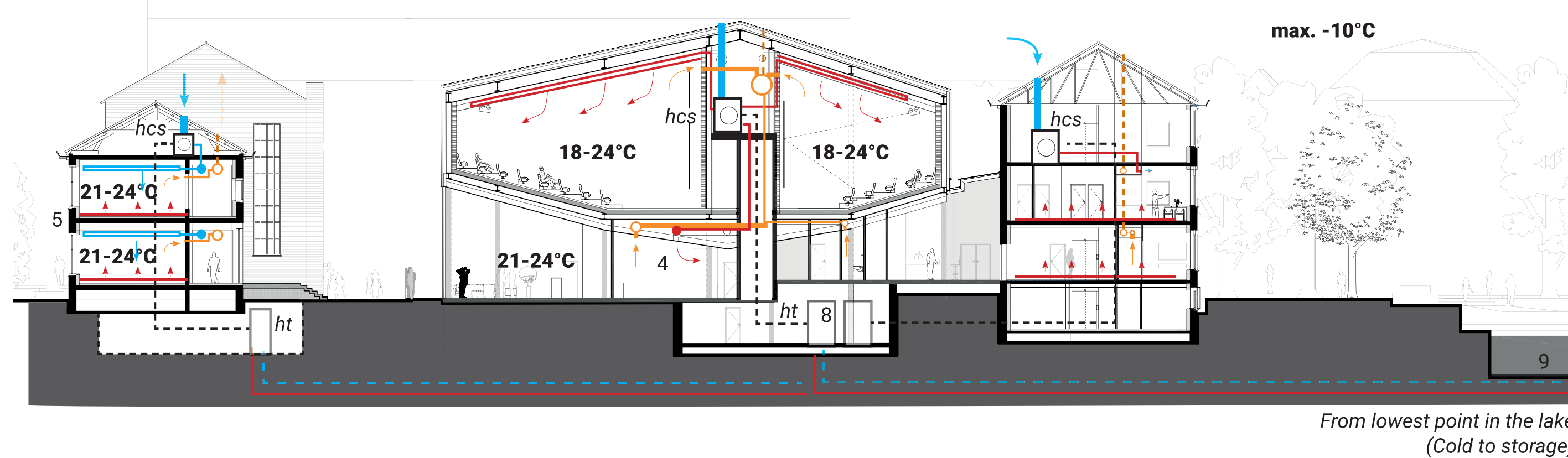
WINTER

The original building from 1951 has floor heating instead of radiators. Cooling the building goes through air ducts that are visible in the corridors and classrooms. This concept of showing the ducts creates a industrial atmosphere in the existing. The addition however functions different due to the (more) public program. These public functions such as the film halls, the restaurant and the music club uses air for heating and cooling.

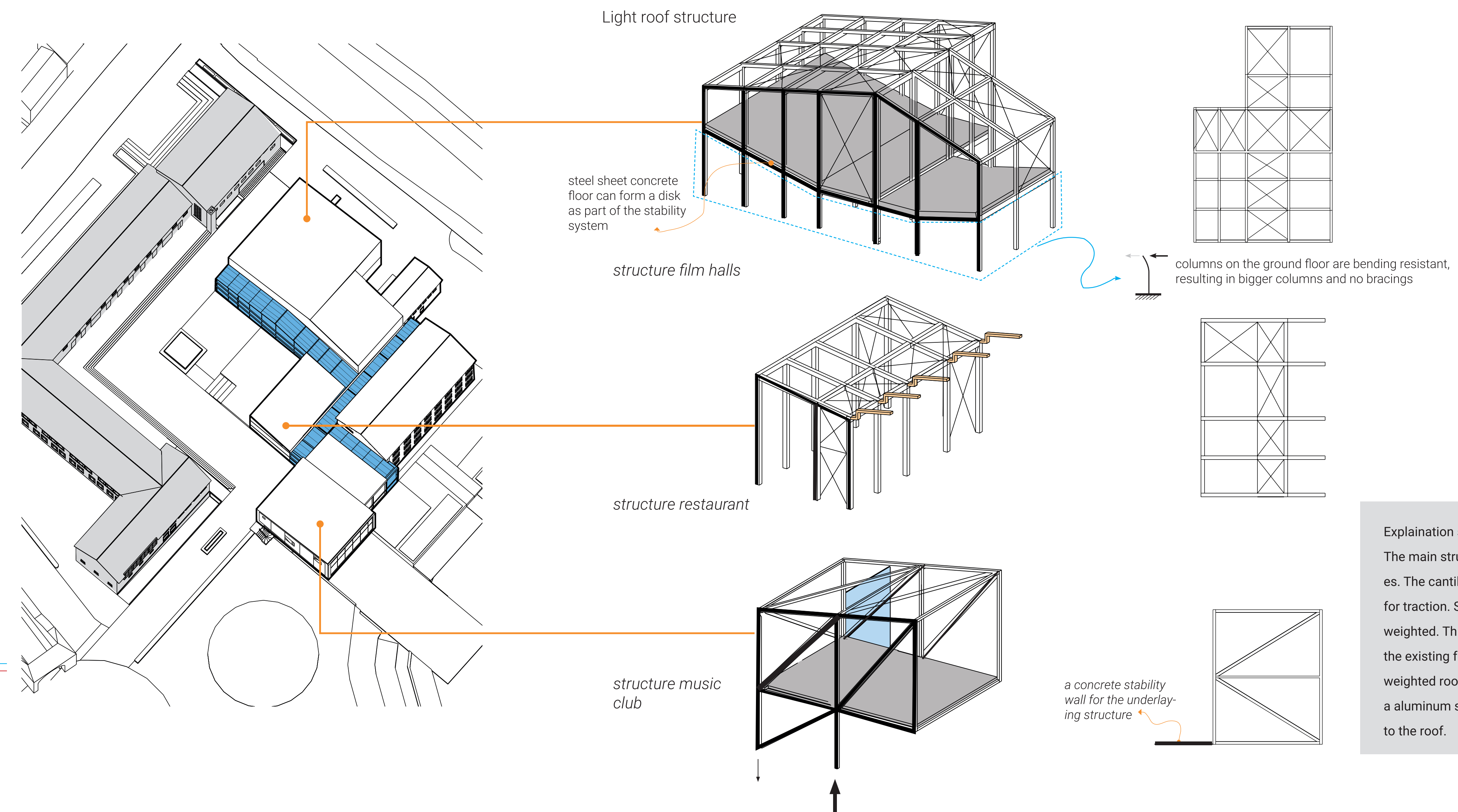


SUMMER

1. Air supply from the roof
2. Air handling unit, heat recovery system (hcs)
3. Air exhaust point (through facade or roof)
4. Air supply point
5. Floor heating
6. Air heating (preheating through thermal wheel)
8. Heat pump (ht)
9. Extract heat from lake

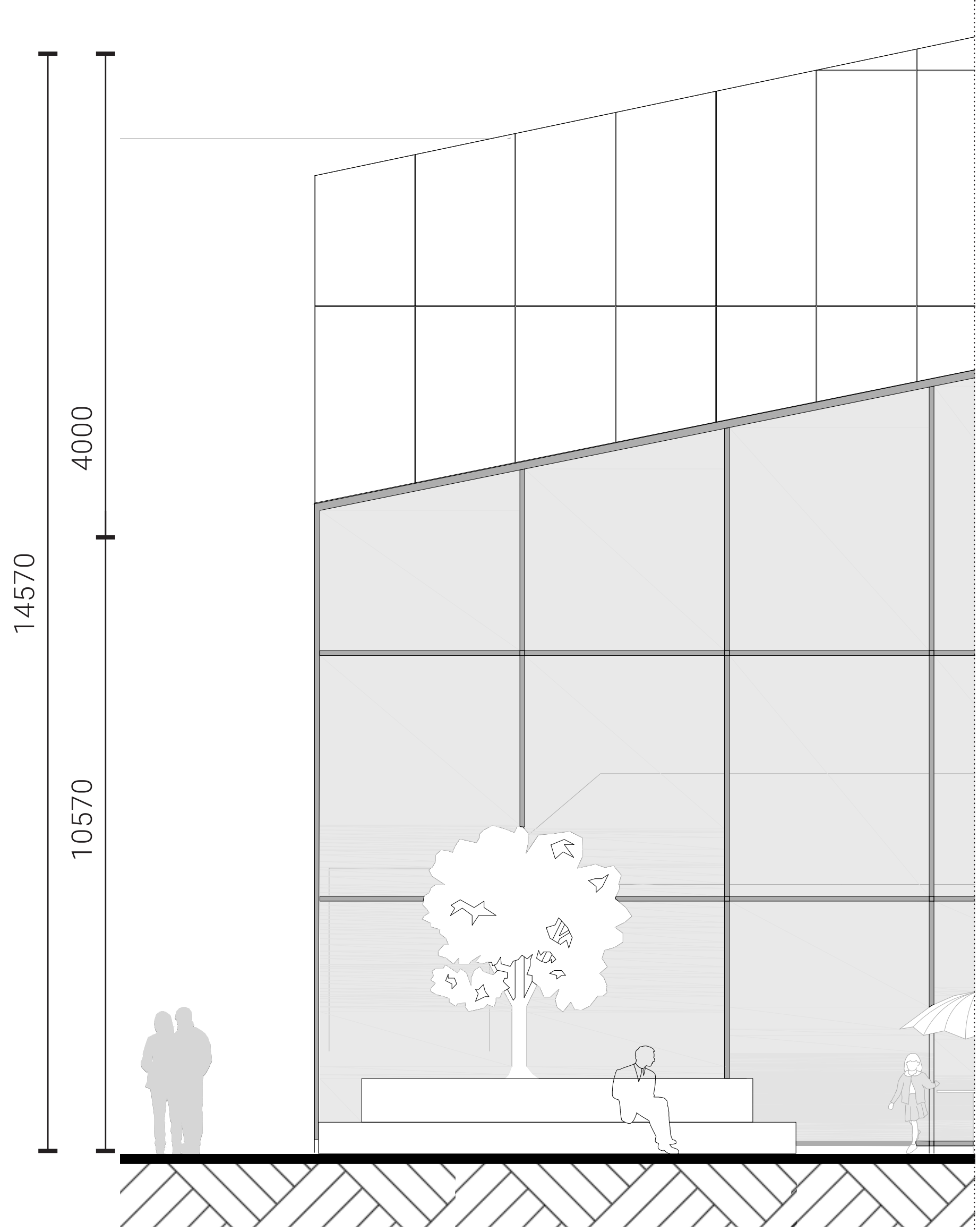


STRUCTURE

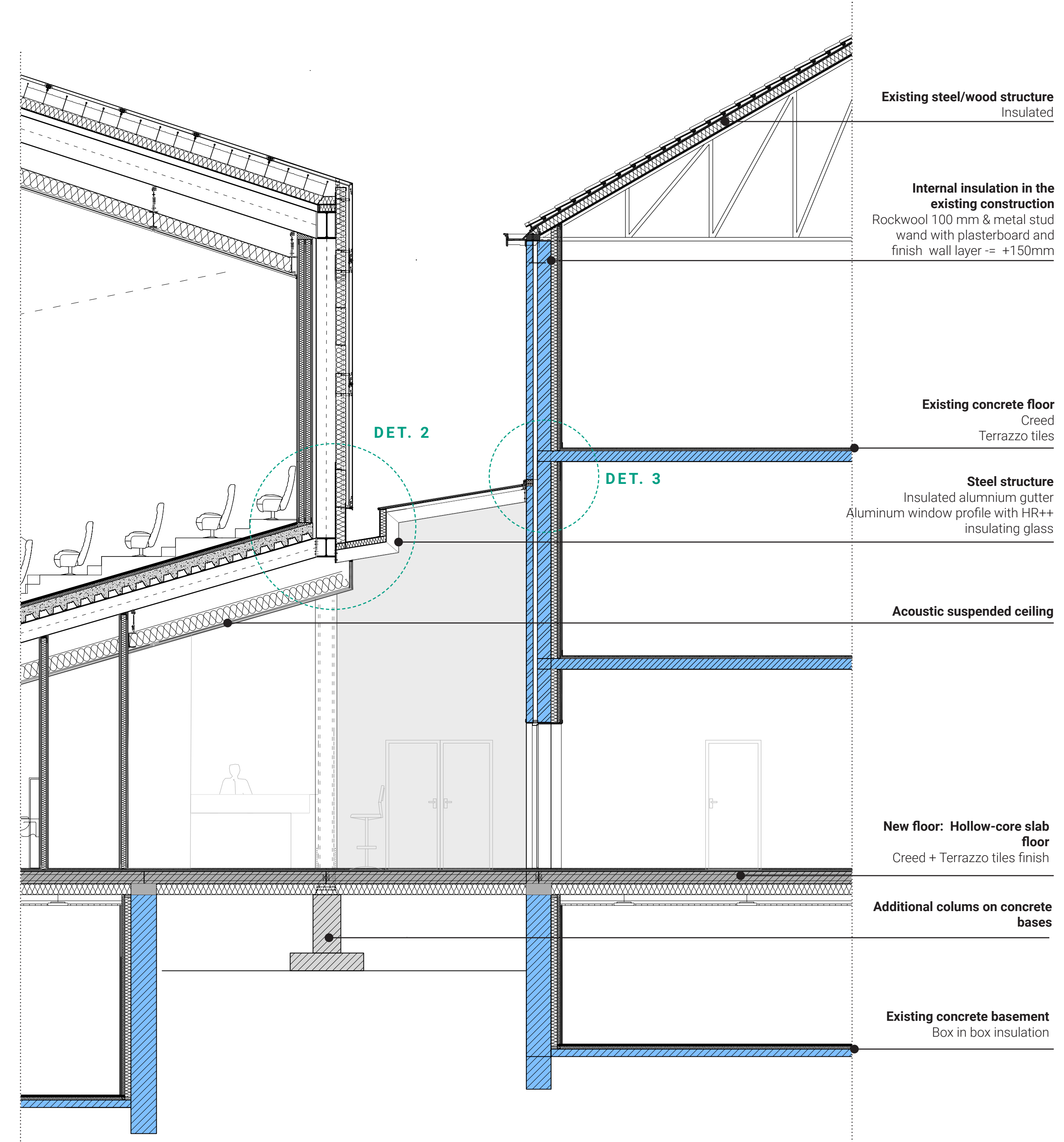


Explanation structure concept
The main structure of the addition consists of steel with braces. The cantilevered Jazz Club includes diagonal scaffolding for traction. Steel structure has the advantage of being light weighted. This makes it possible to put the structure on top of the existing foundation. The roofs of all the volumes are light weighted roofs consisting of steel sheet plate, foundation and a aluminum suspended panels. The facade panels continuous to the roof.

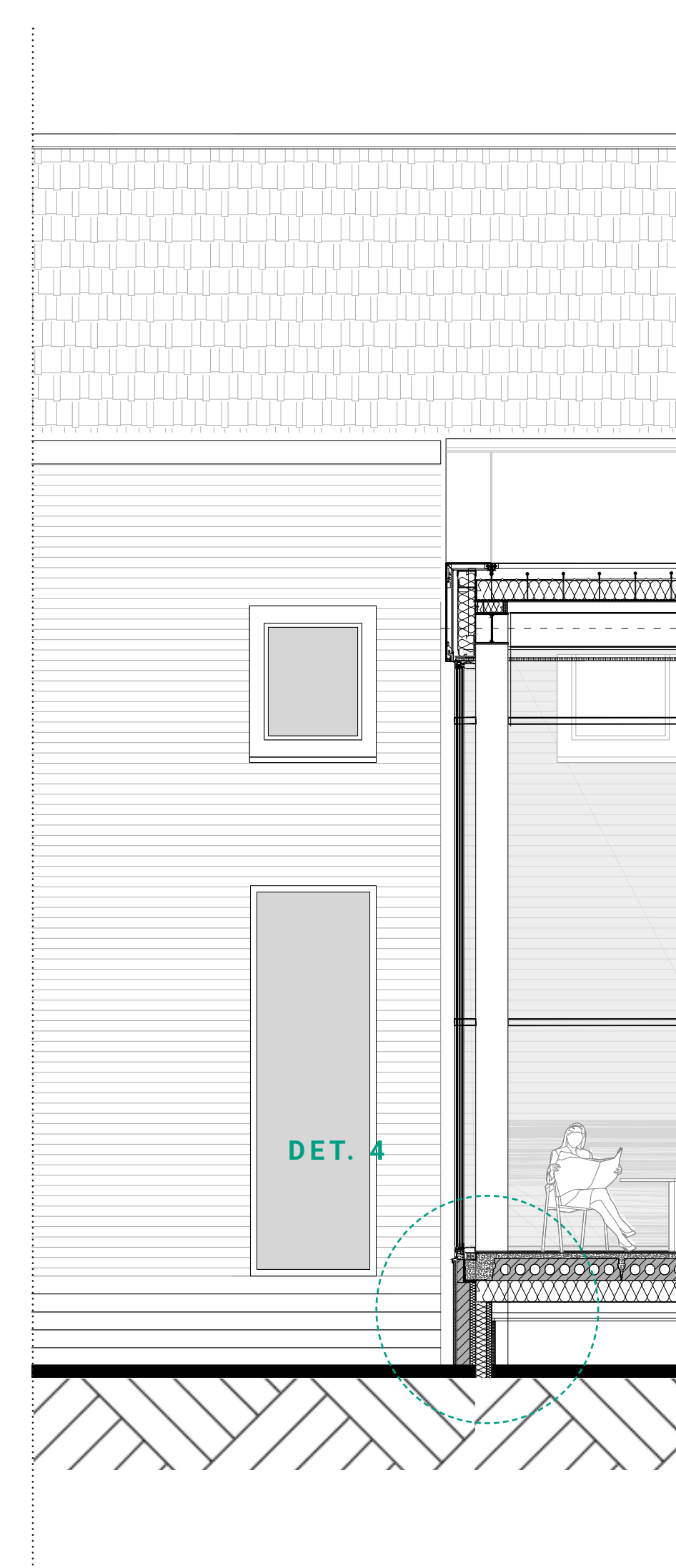
FACADE FRAGMENT | 1:50



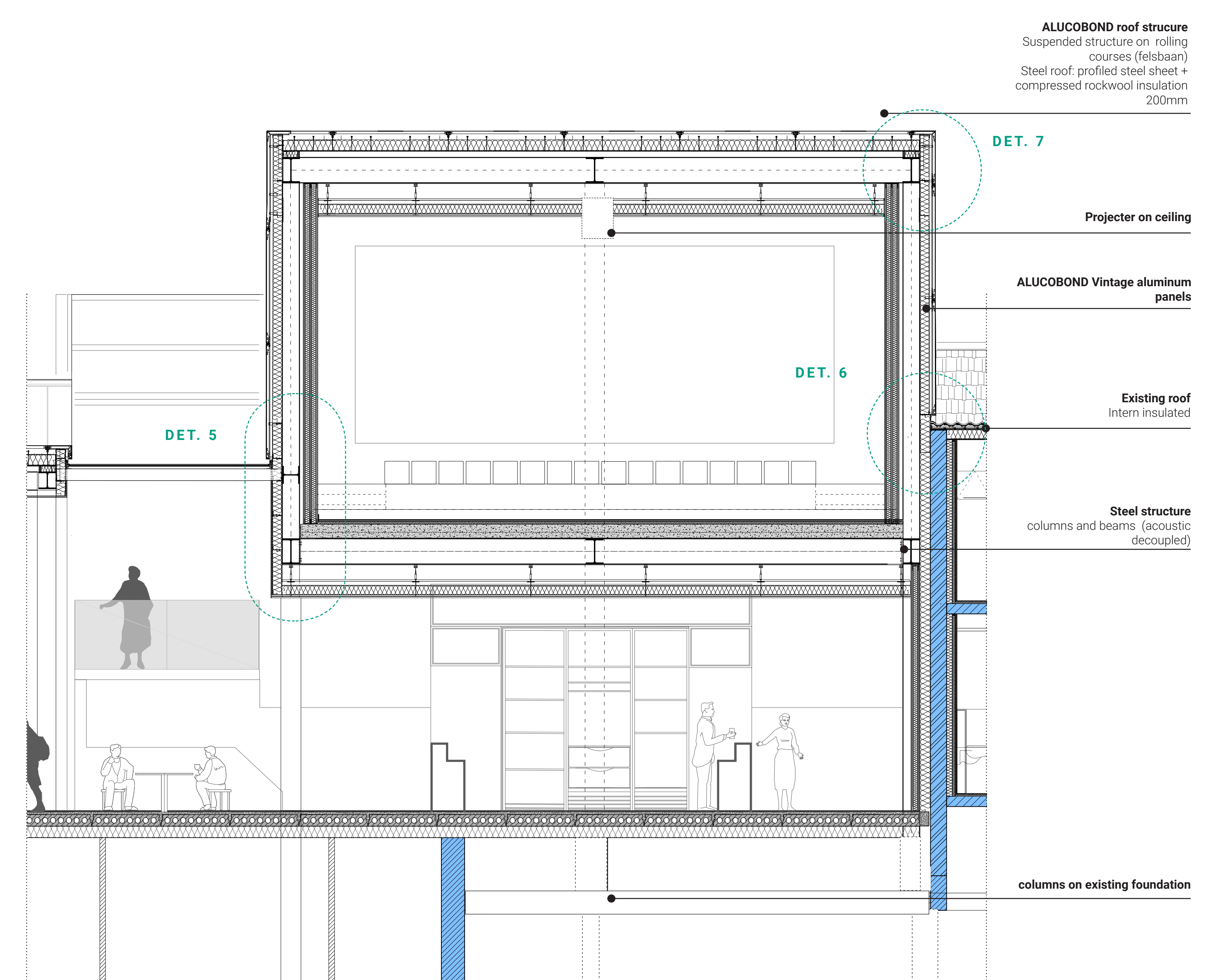
VERTICAL SECTION FRAGMENT A-A' | 1:50



INSIDE ELEVATION' | 1:50



SECTION FRAGMENT D-D' | 1:50



DETAILS 1:10

LEGEND

1. Existing brick wall, cavity 70mm
2. Insulation rockwool 100mm, metal stud wall, 2x 12.5mm plasterboard and stucco (white) finish wall
3. Rear window (Janisol arte)
4. Insulation 20mm, underfloor heating and carpet finish floor
5. HEA beam acoustic decoupled through rubber, steel plate concrete floor, insulation, creed and a carpet finish floor
6. Gyproc SoundBloc metal stud - 90 min. fire resistance & 69 dB soundinsulation
7. HEA column
8. FAAY GP22 VO - Acoustic suspension ceiling system with free span, insulation and double plasterboard with 2.5mm chipboard.
9. ALUCOBOND Vintage aluminum panels (color: coracero B mat D0055) width: 1250mm, height varies from 1000- 3000mm, Suspension structure, box (binnendoos) construction, battens.
10. Aluminum gutter frame (insulated).
12. Aluminum glazing profile & HR ++ insulating glazing on steel beam
13. Existing concrete floor 150mm, creed 50mm, Terrazzo tiles grey
14. Triple glazing with silk-screen print (50% - 80% coverage), aluminum curtain wall
15. Prefab concrete wall on existing column, natural stone tiles
16. Terrazzo tiles, pressure layer, hollow-core slab floor on concrete beam with nsulation, suspended ceiling
17. Steel roof: profiled steel sheet, vapor barrier, insulation compressed rockwool 200mm, Kalzip E-clip, aluminum rolling course (felsbaan), roof suspended ALUCOBOND structure.

