

Direct Computing with Explorative Point Clouds

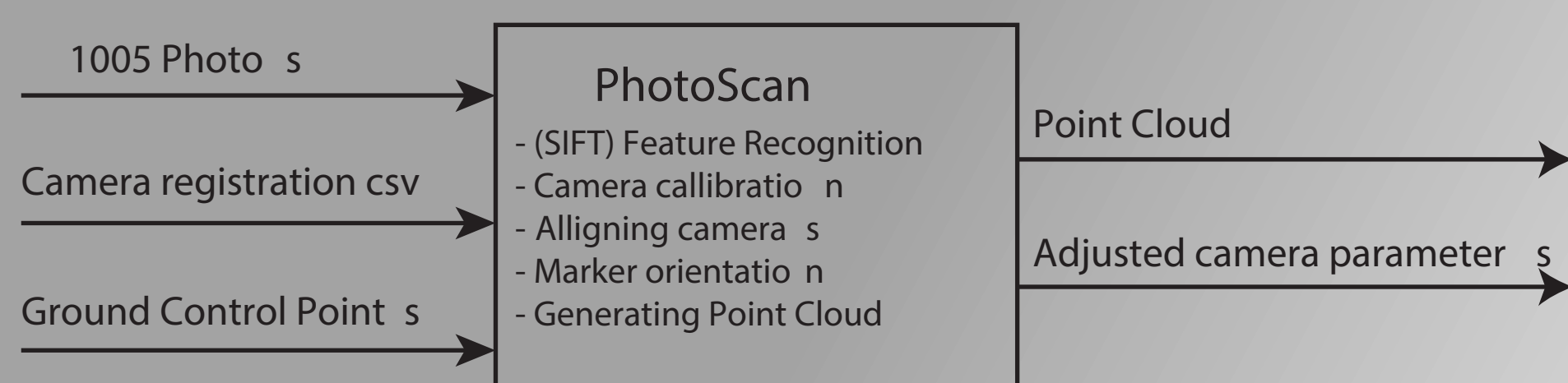


Jan ten Kate
Pieter Soffers
Matthijs Kastelijns
Martijn Koopman
Anna-Maria
Ntarladima

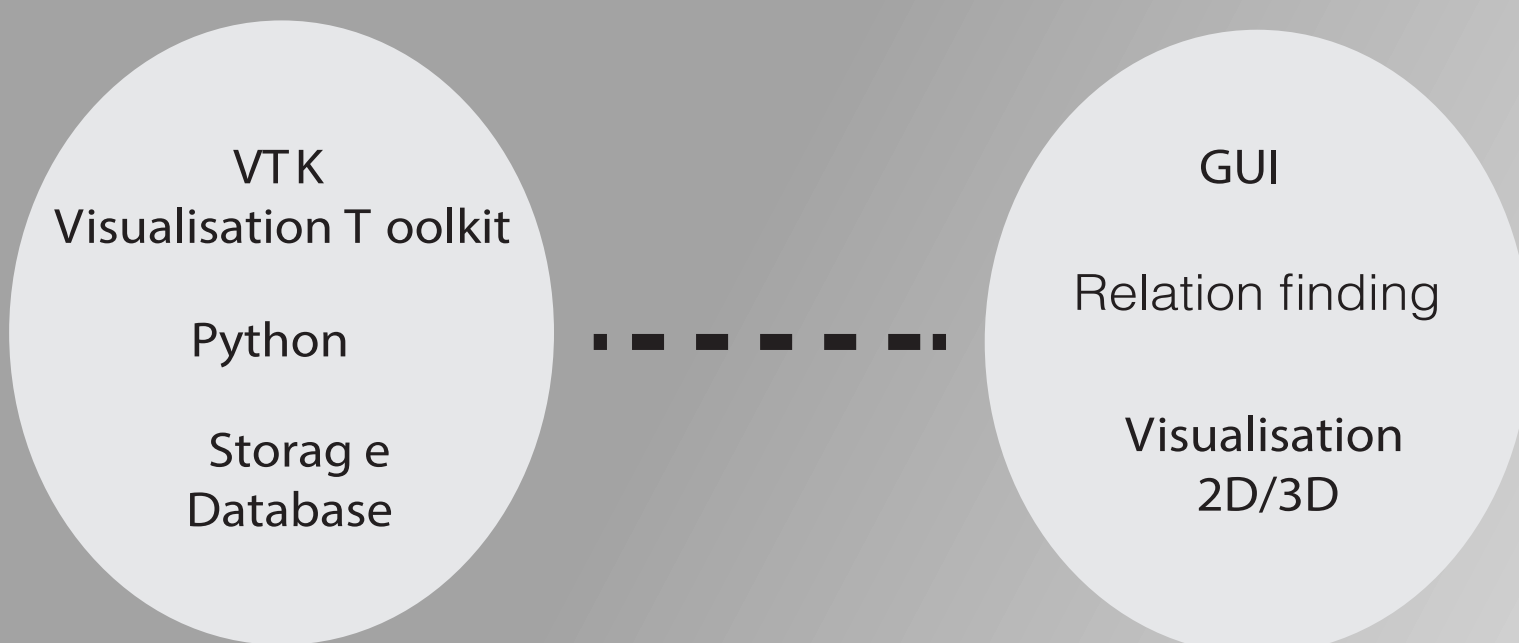
Using a drone is an effective way to monitor a structure. Photos made with the drone can be turned into a point using photogrammetry. The point cloud can be used for spatial analyses while the imagery can be used for close-up inspections. To help the end-user to intuitively relate the photos with the points. Team Owl made a powerful tool that remodels this relation that is normally lost in processing.



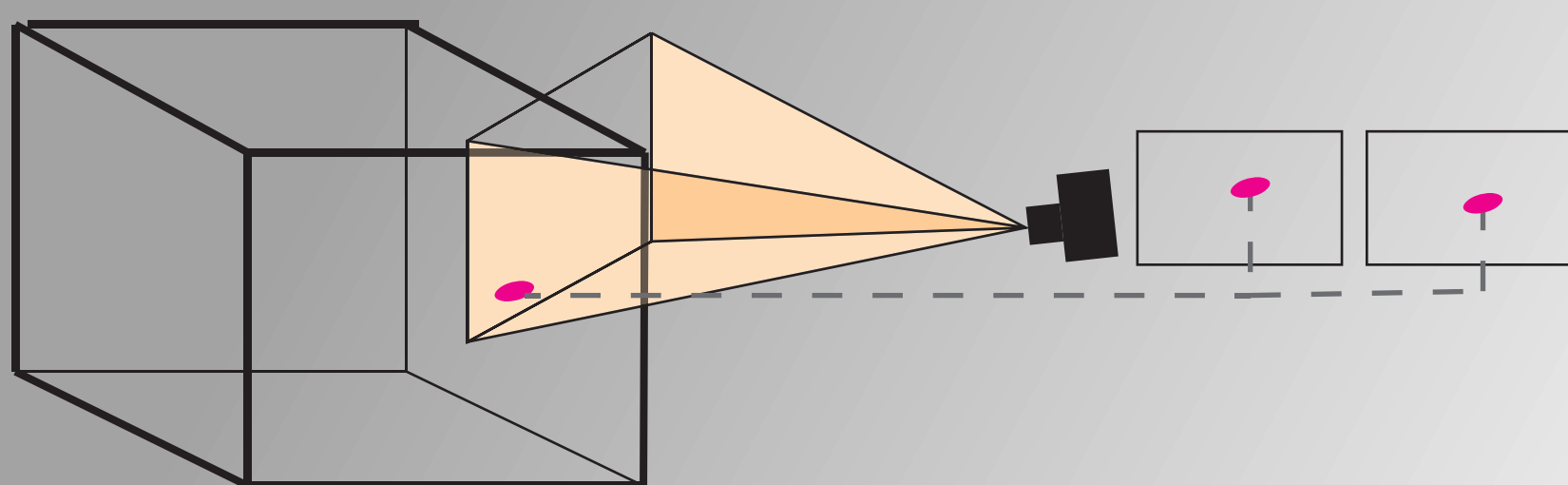
1 Photo acquisition using a drone



Input from acquisition



Application elements

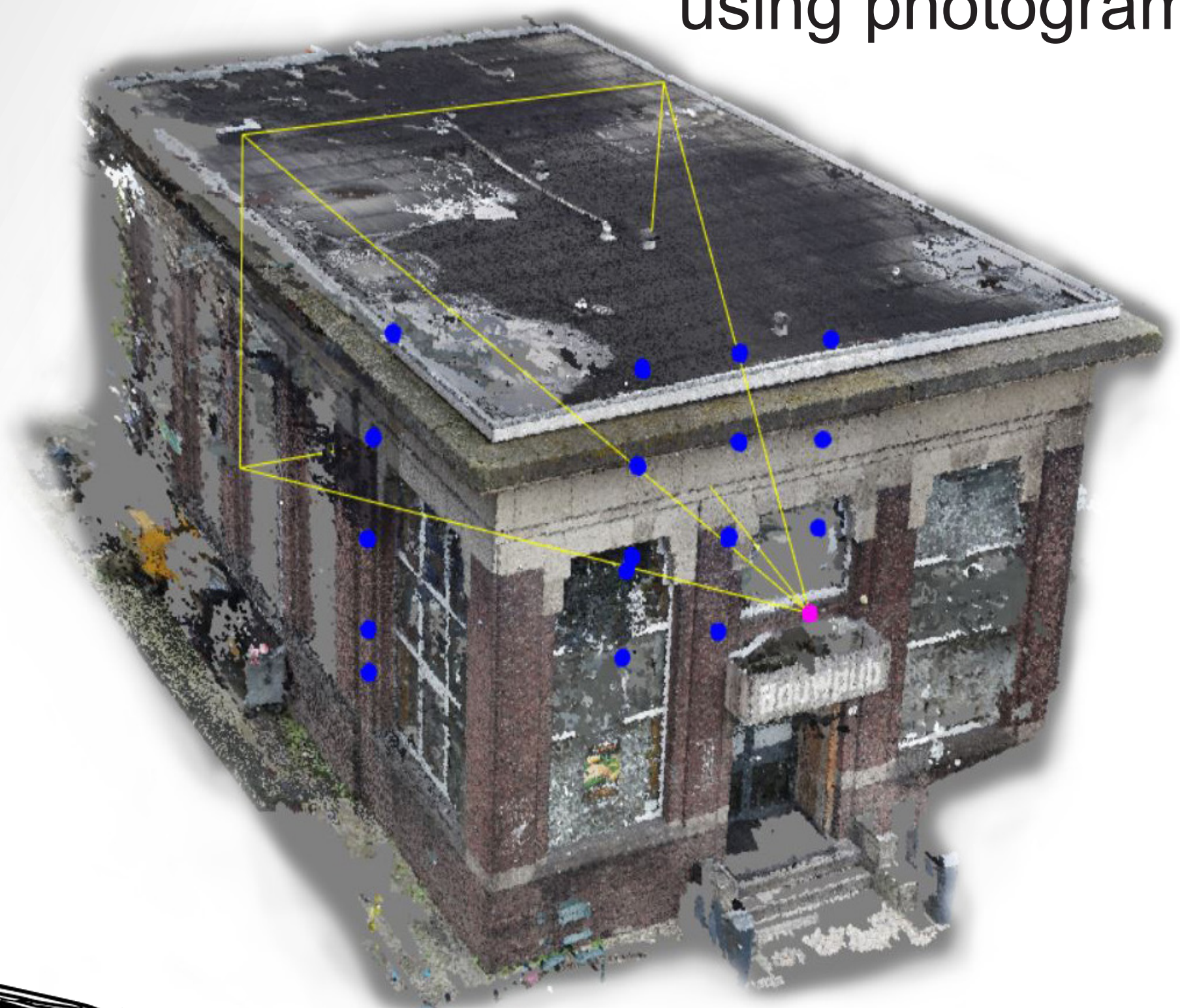


Point and photo relation

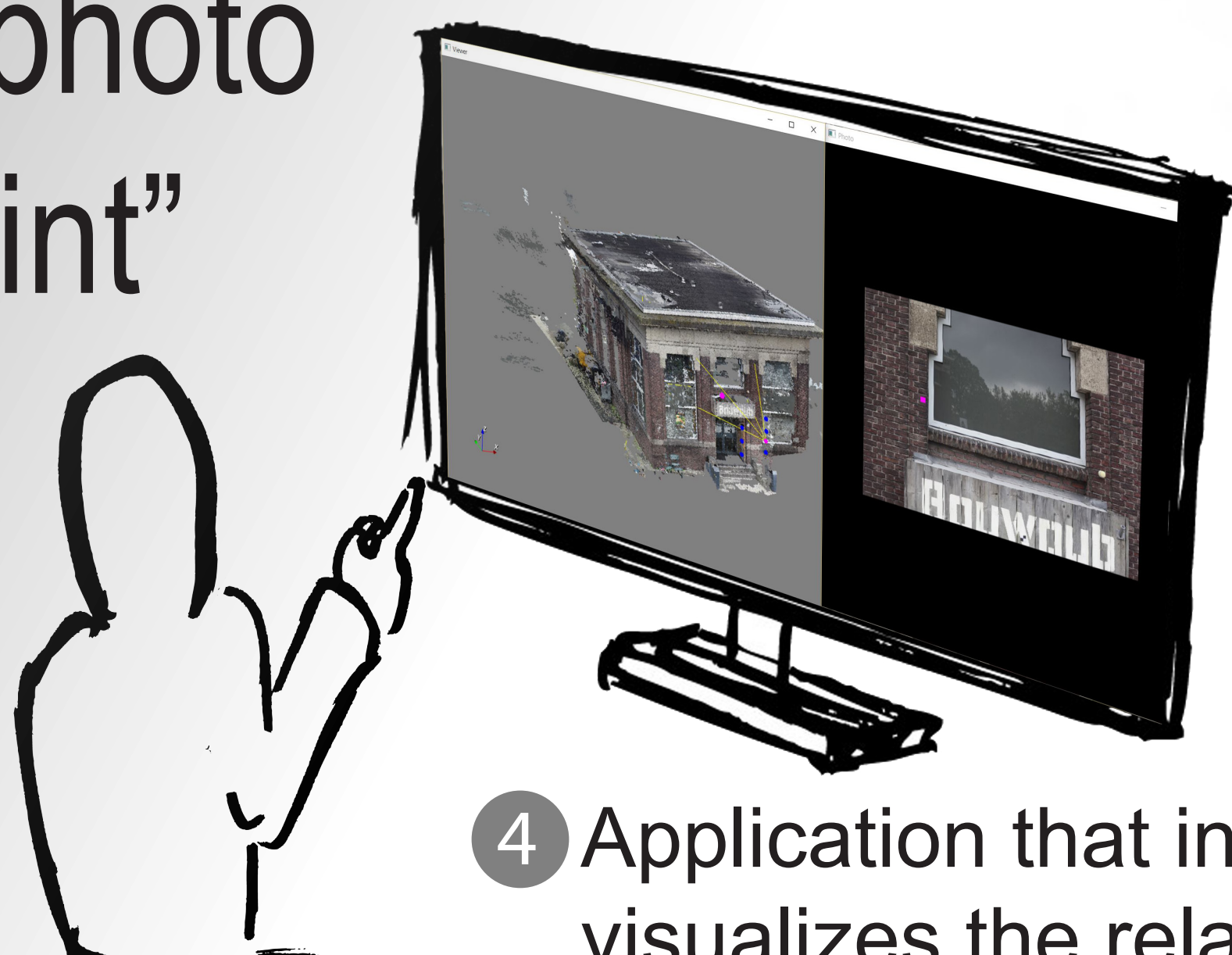
“An intuitive visualisation tool to relate photo and point”



2 Photos processed into point cloud using photogrammetry



3 Remodel the relation between photo and point



4 Application that intuitively visualizes the relation