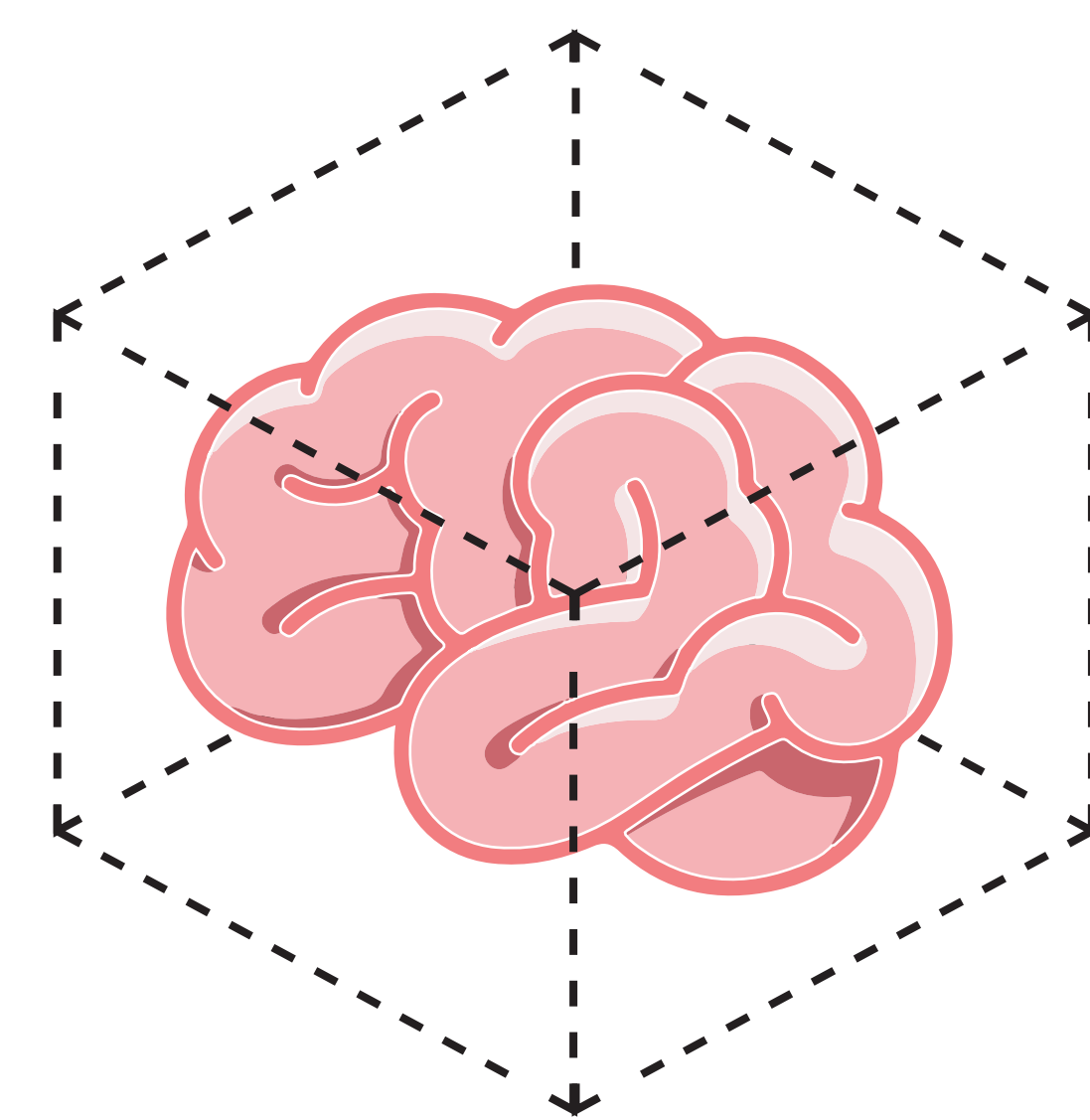


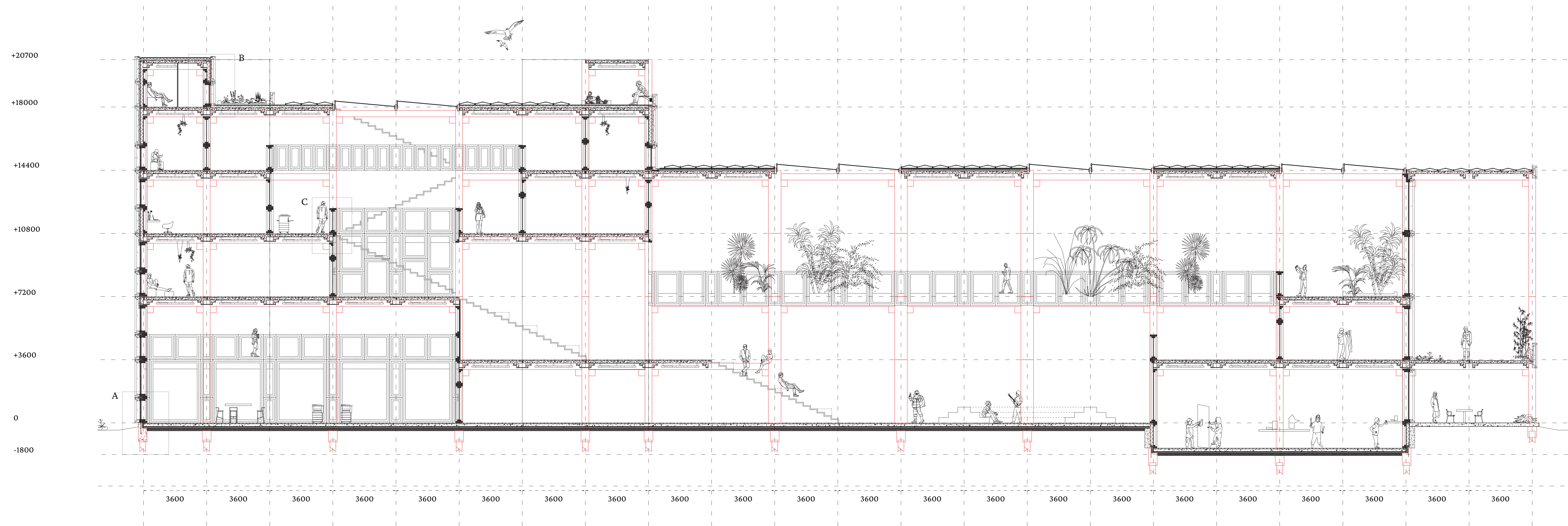
space
for the brain



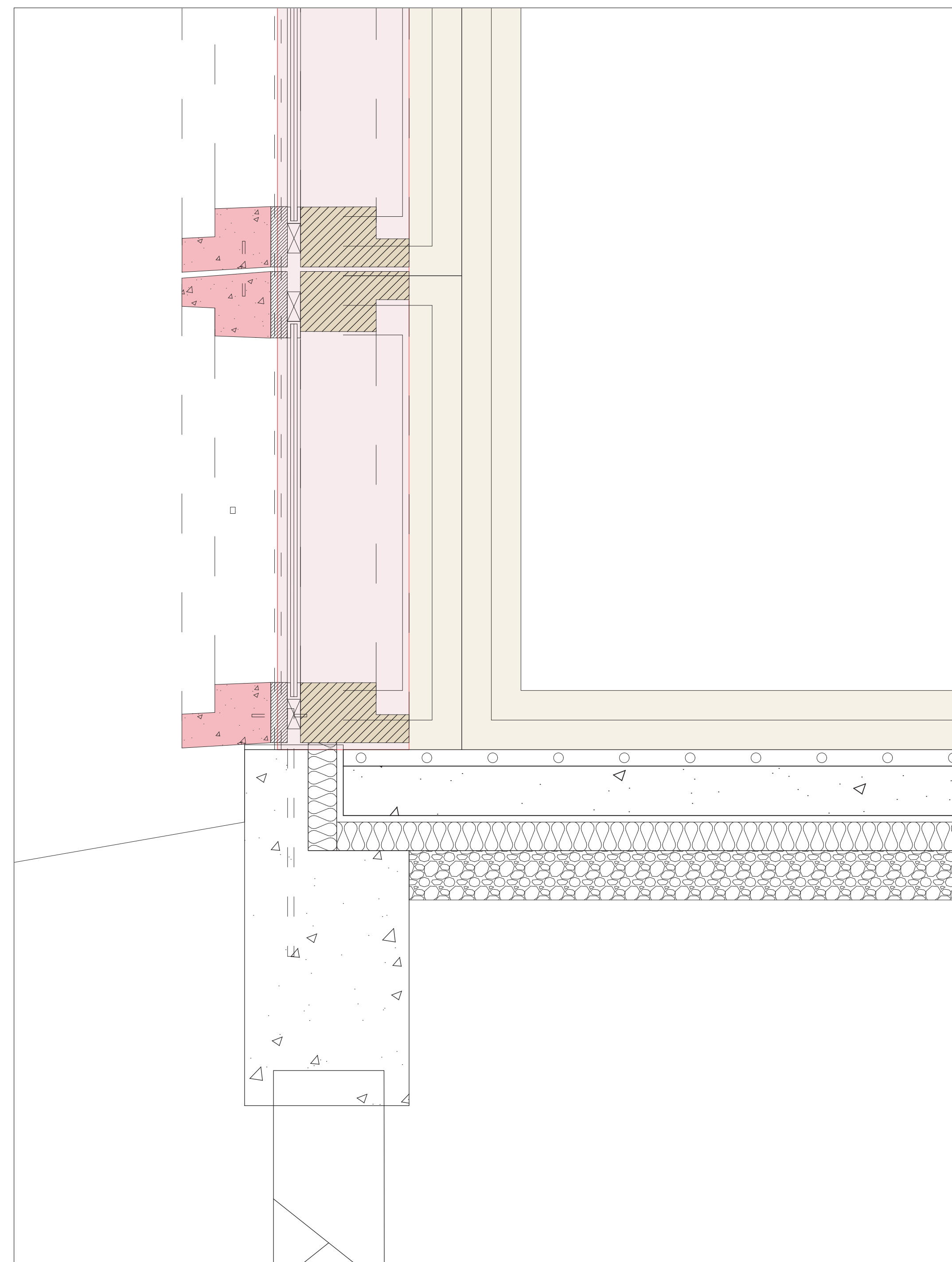
ruimte
voor het brein

*ground for focus and creativity for every brain
graduation explore lab
lauren broshuis
april 2020*

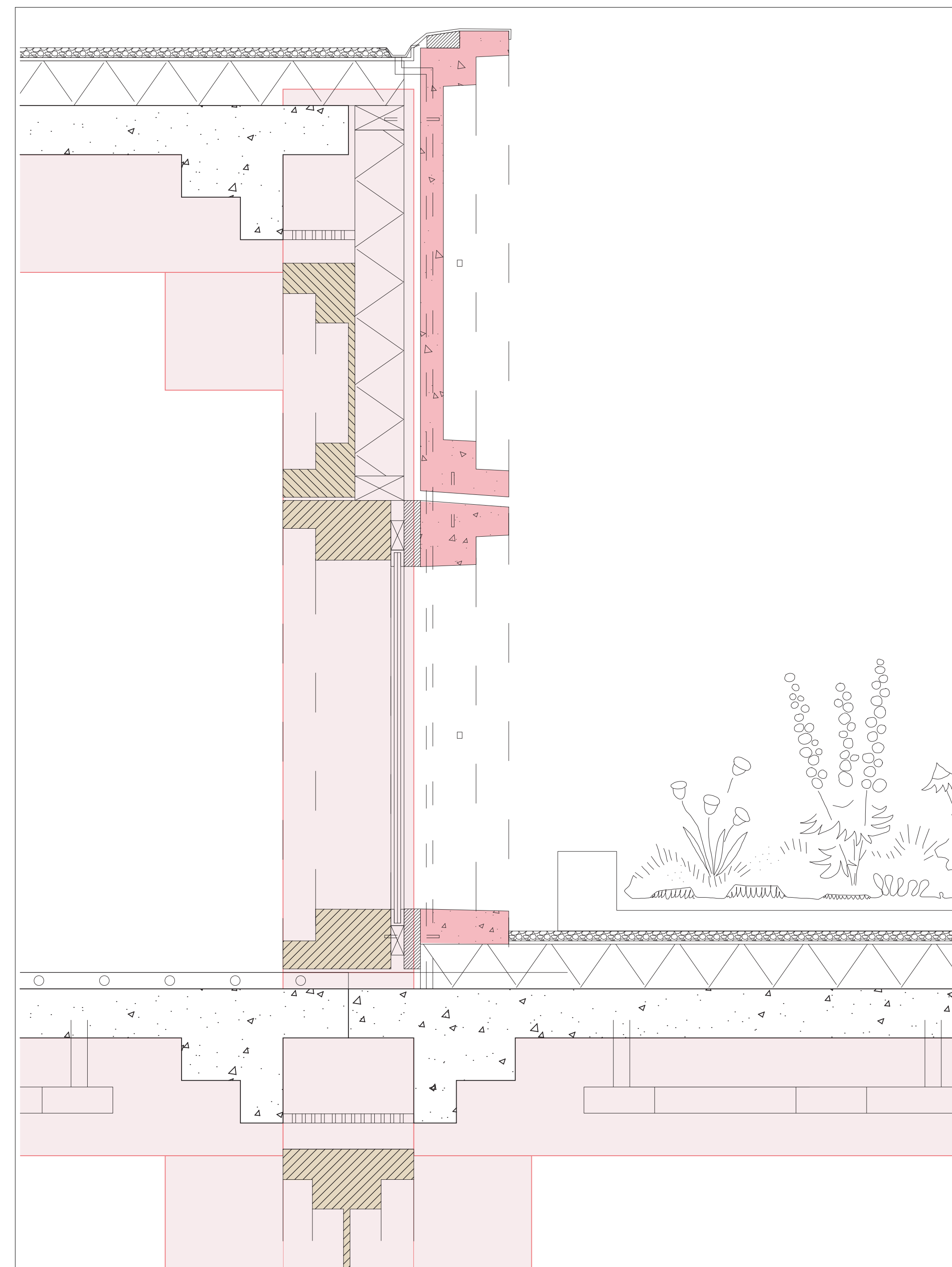
1:100 SECTION (AA)



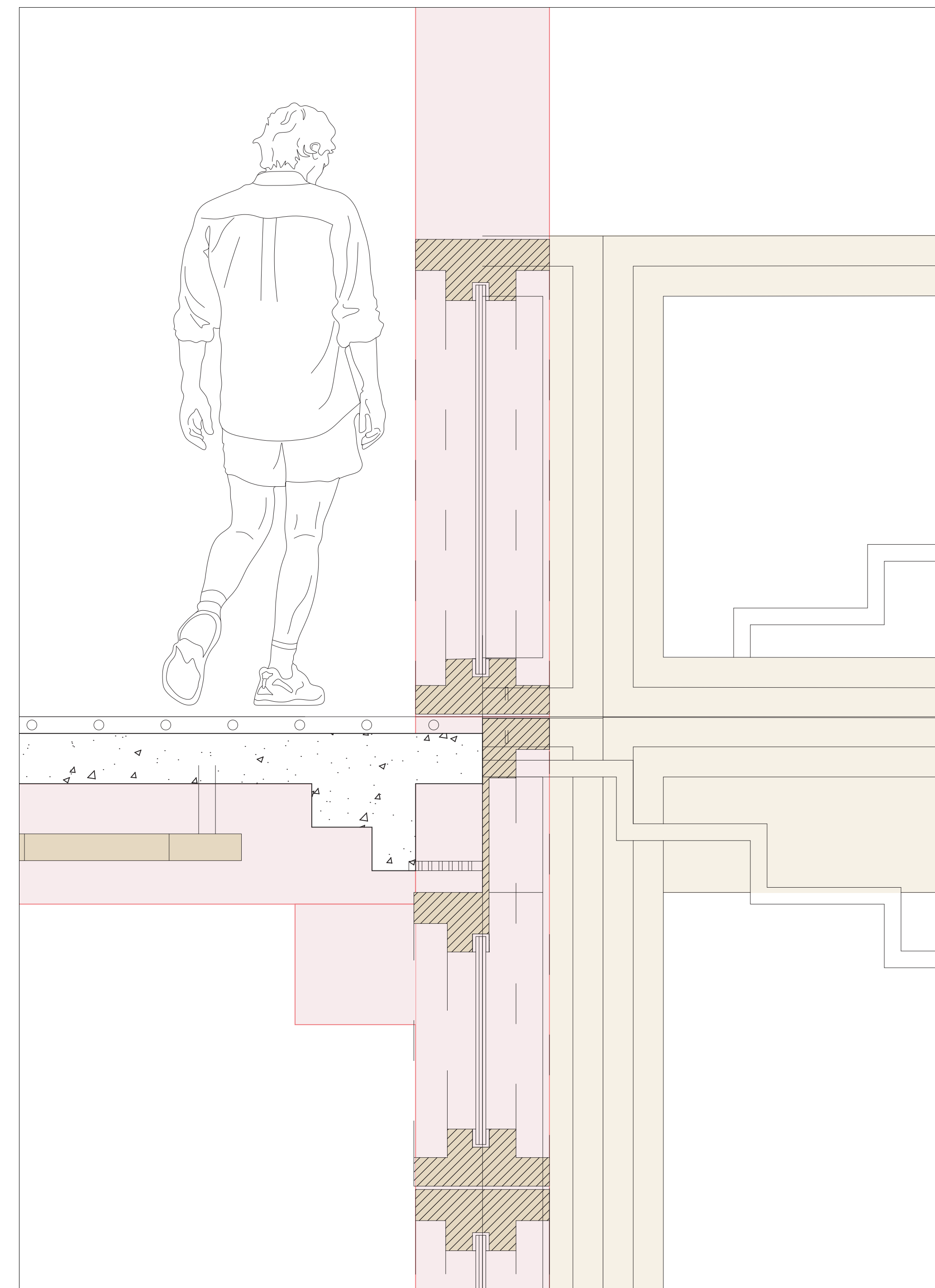
1:10 DETAIL A

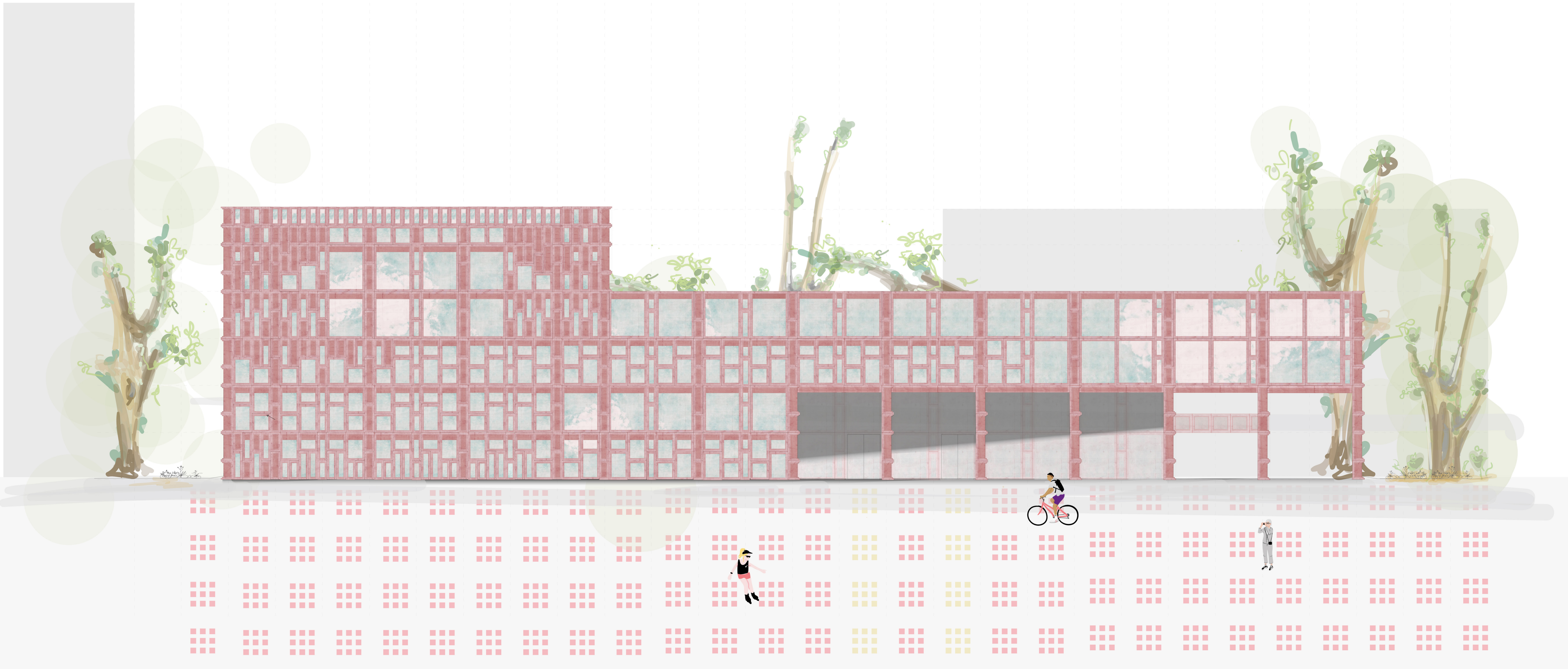


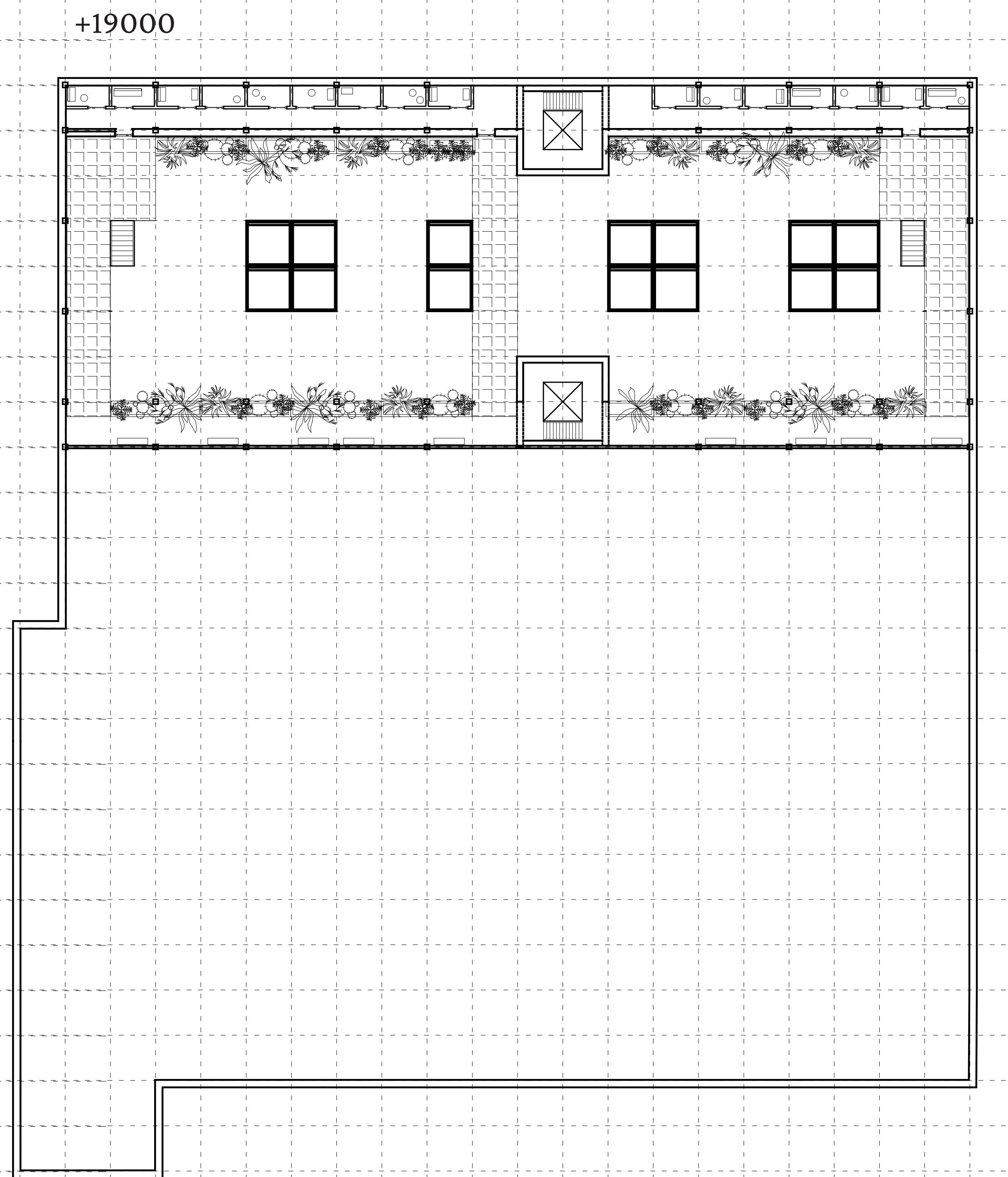
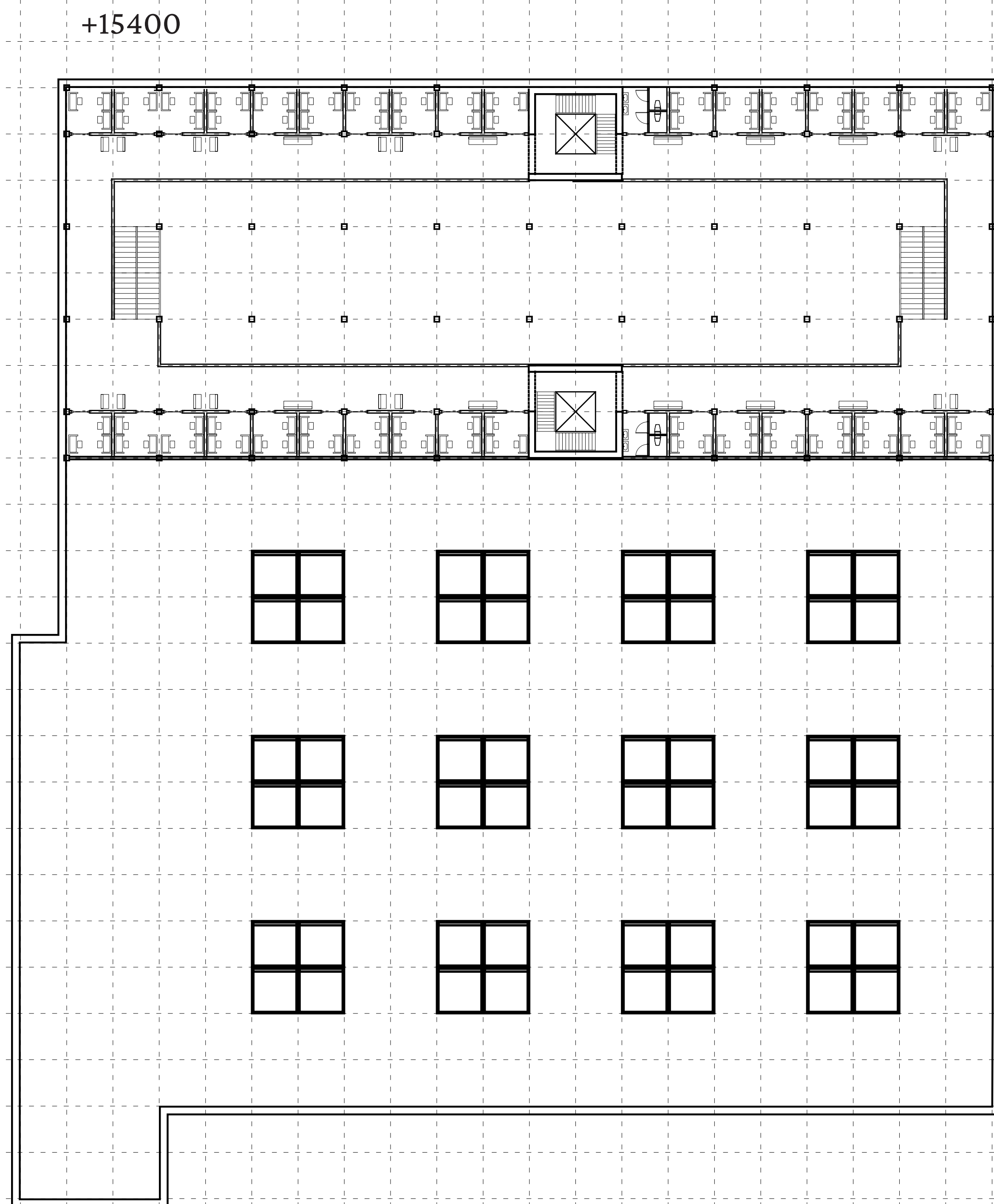
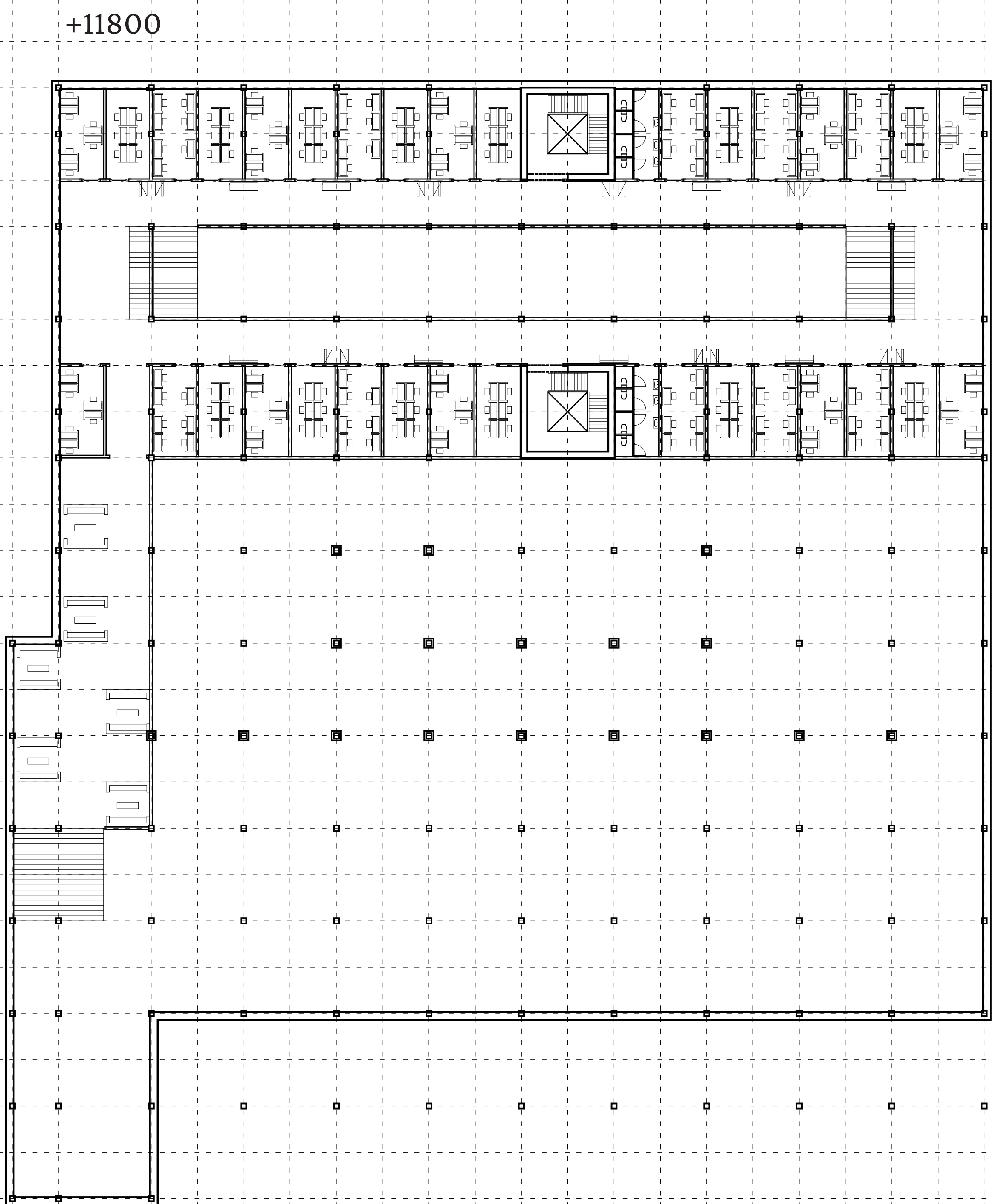
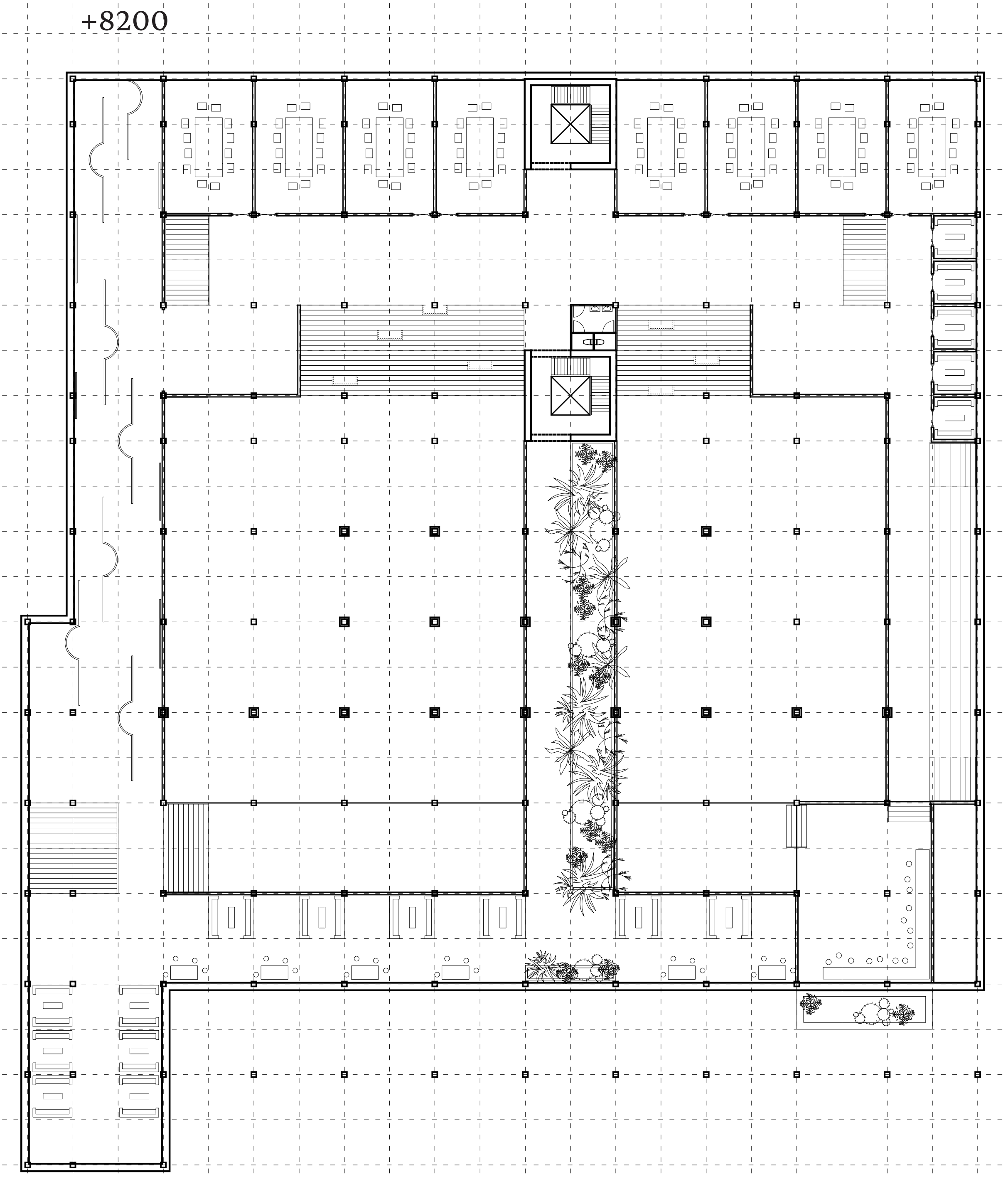
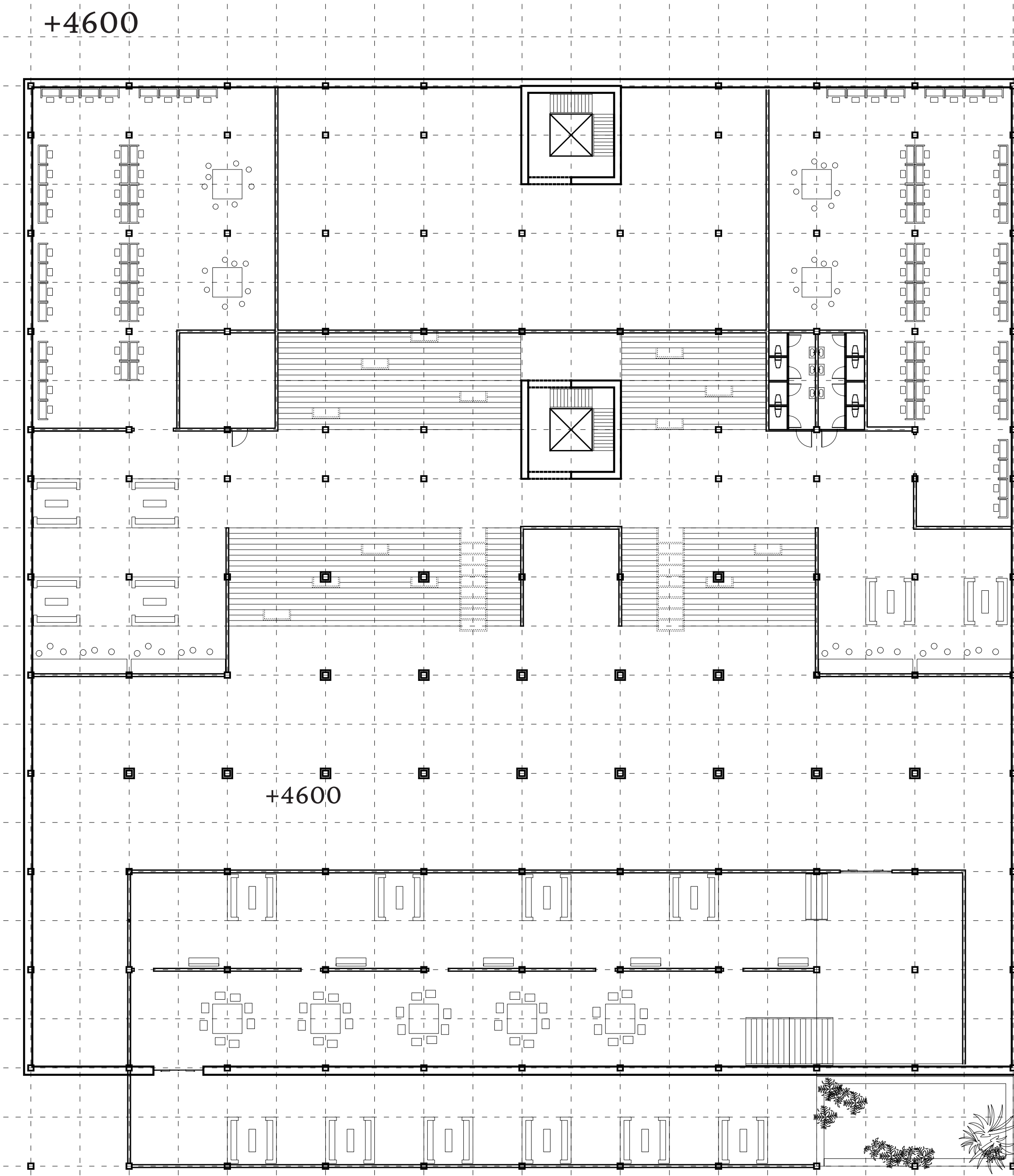
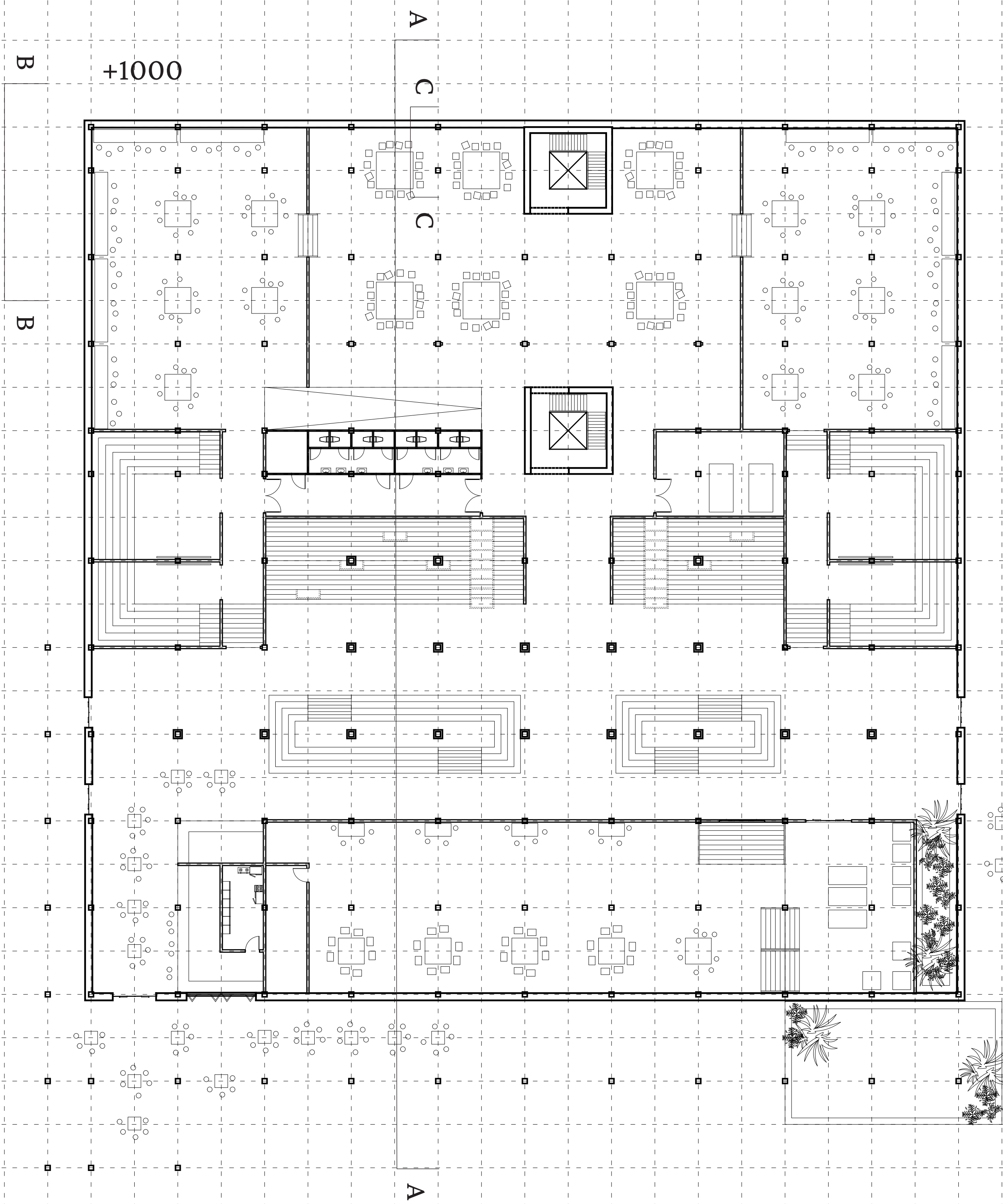
1:10 DETAIL B



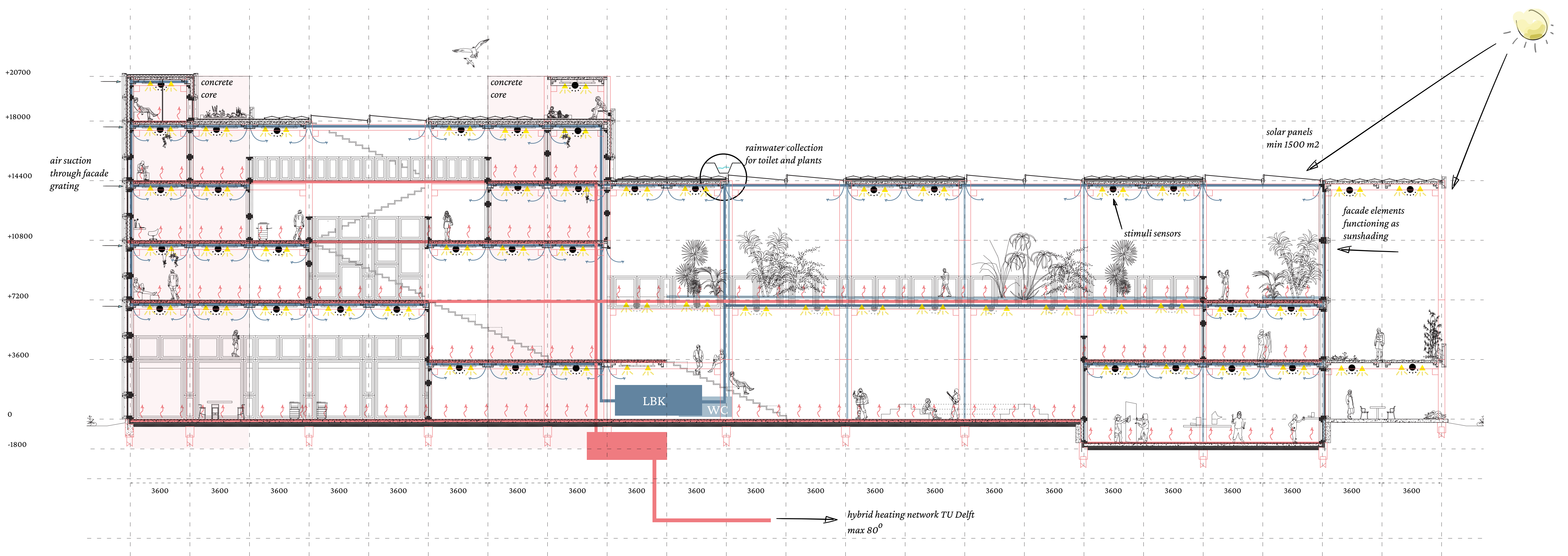
1:10 DETAIL C



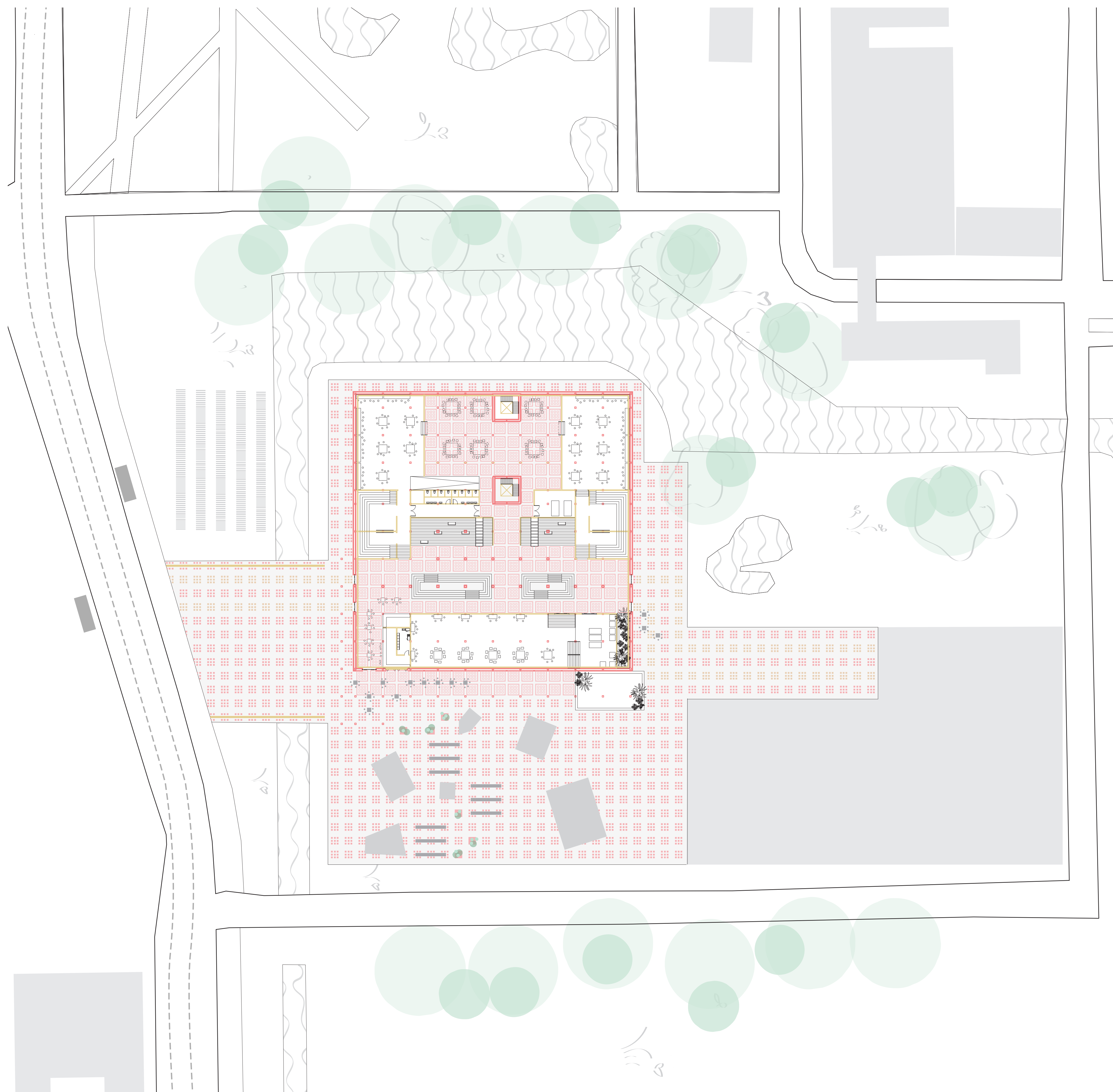


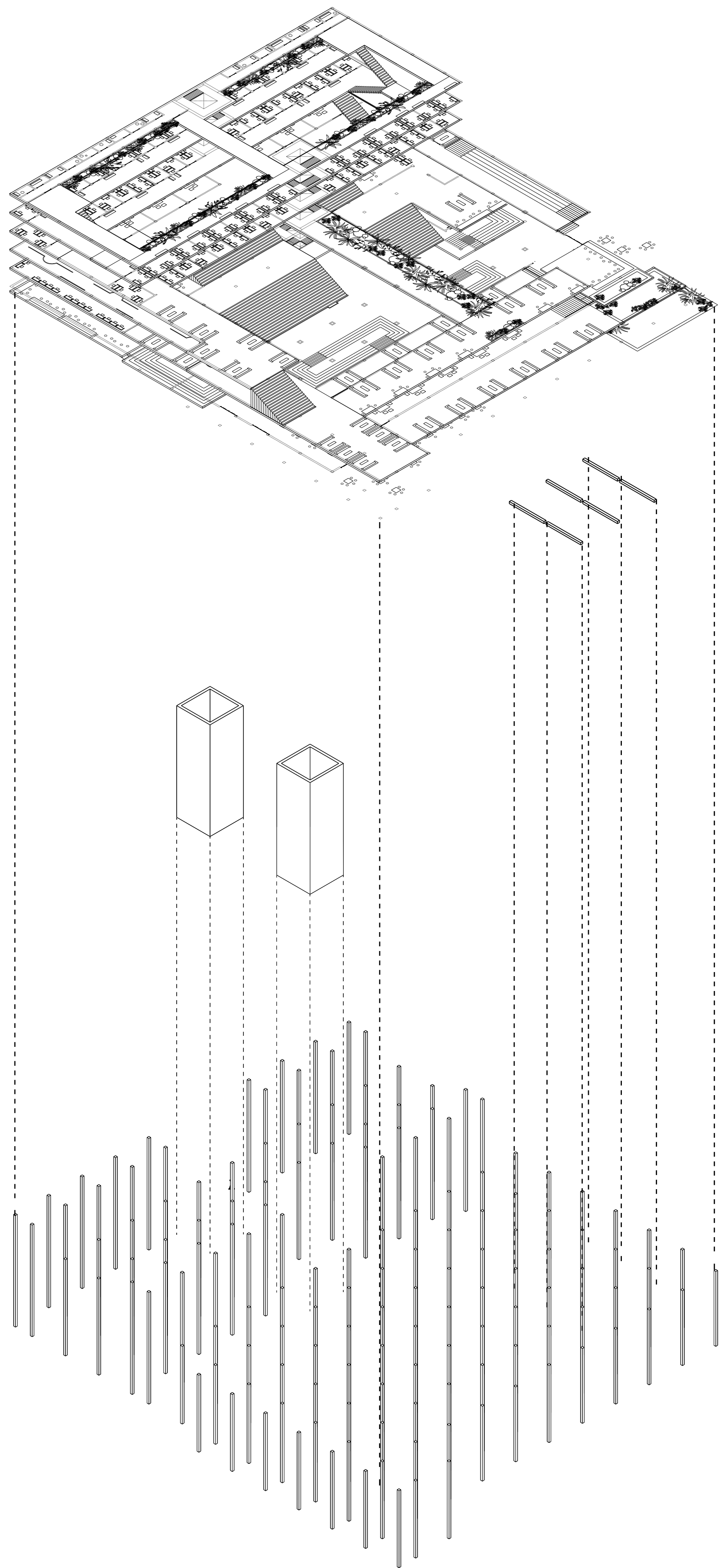


CLIMATE CONDITIONS



1:500 URBAN IMPLEMENTATION / N





solid concrete

floor slabs

3600x7200 mm

red/pink pigment
prefab

concrete beams

360x360x7200 mm

red/pink pigment
prefab

concrete cores

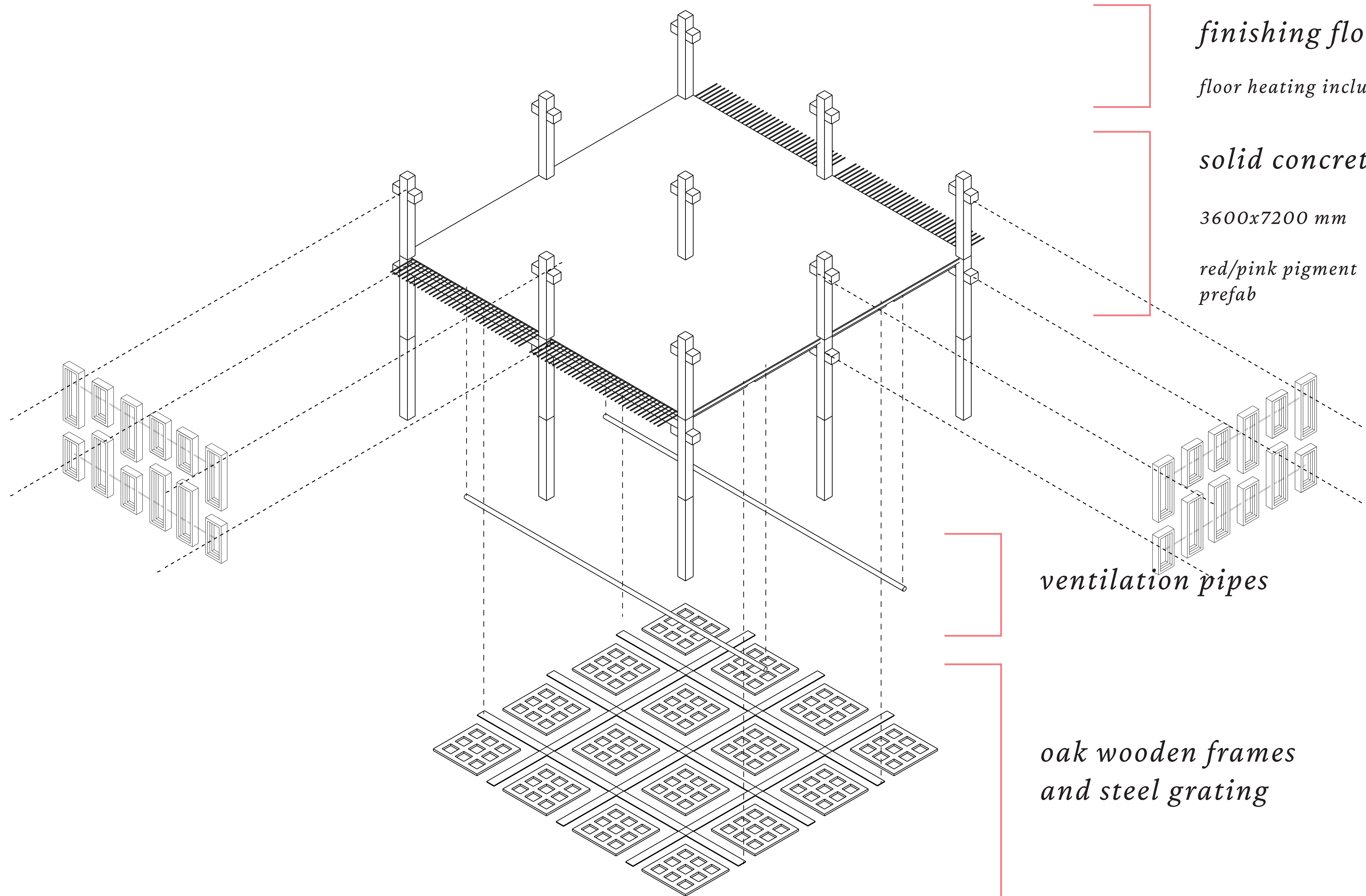
7200x7200 mm

stability
elevators and fire escapes included

concrete columns

400x400 mm
720x720 mm (hollow)

red/pink pigment
prefab



finishing floor

floor heating included

solid concrete floor slabs

3600x7200 mm

red/pink pigment
prefab

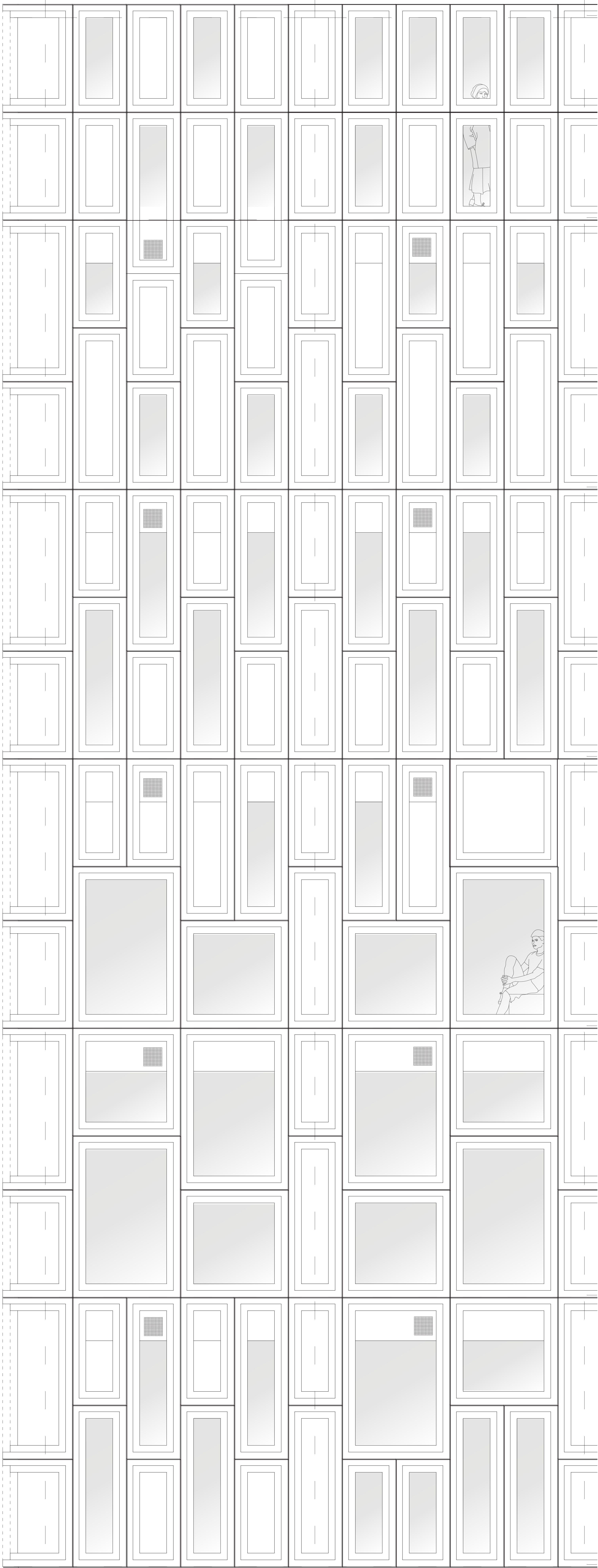
concrete facade elements

1440 x 720 x 270 mm
2160 x 720 x 270 mm

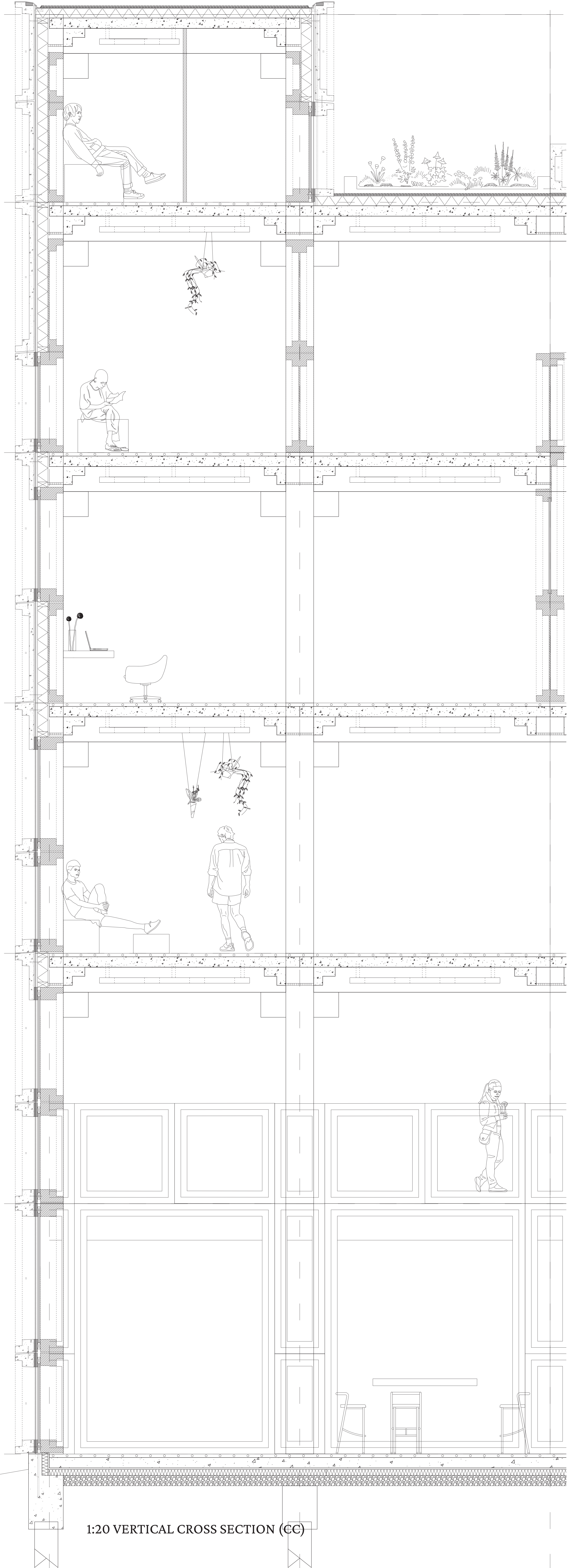
red/pink pigment
precast

ventilation pipes

*oak wooden frames
and steel grating*



1:20 OUTER FACADE VIEW (BB)



1:20 VERTICAL CROSS SECTION (CC)

