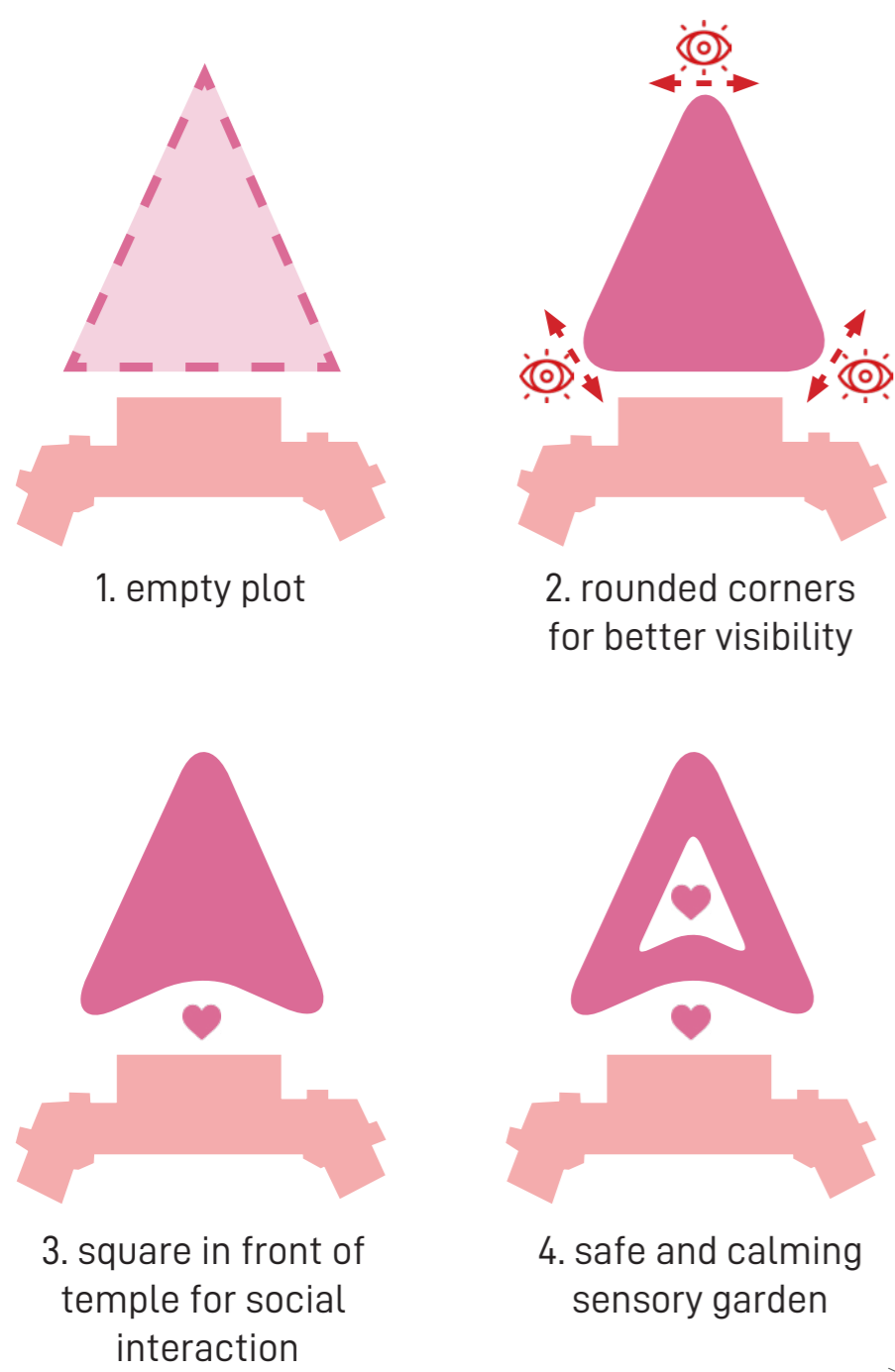


UPSCALING DEMENTIA ARCHITECTURE

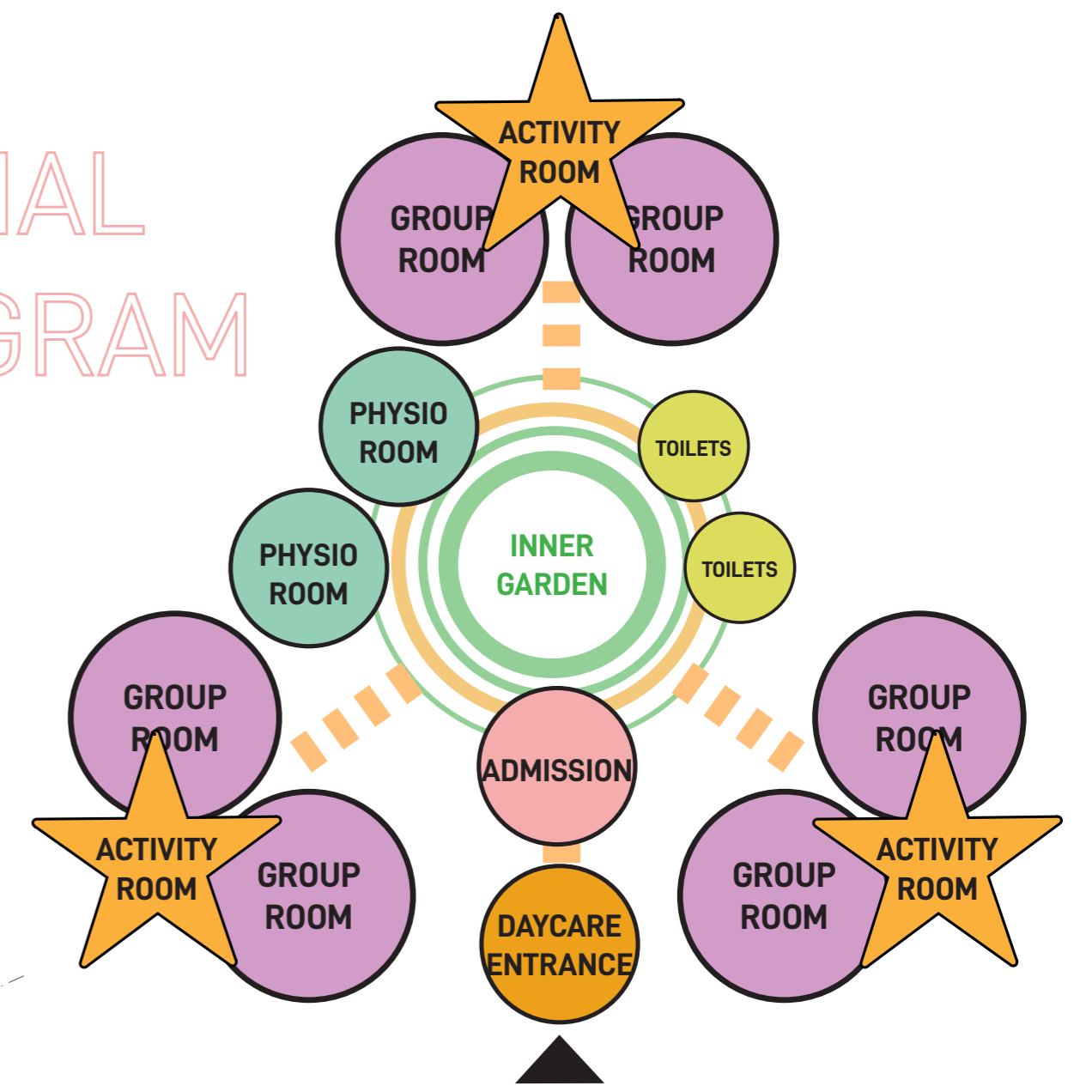
BUGRA ATCIYURT | 5248035 | 04-07-2023 | DESIGNING FOR HEALTH & CARE



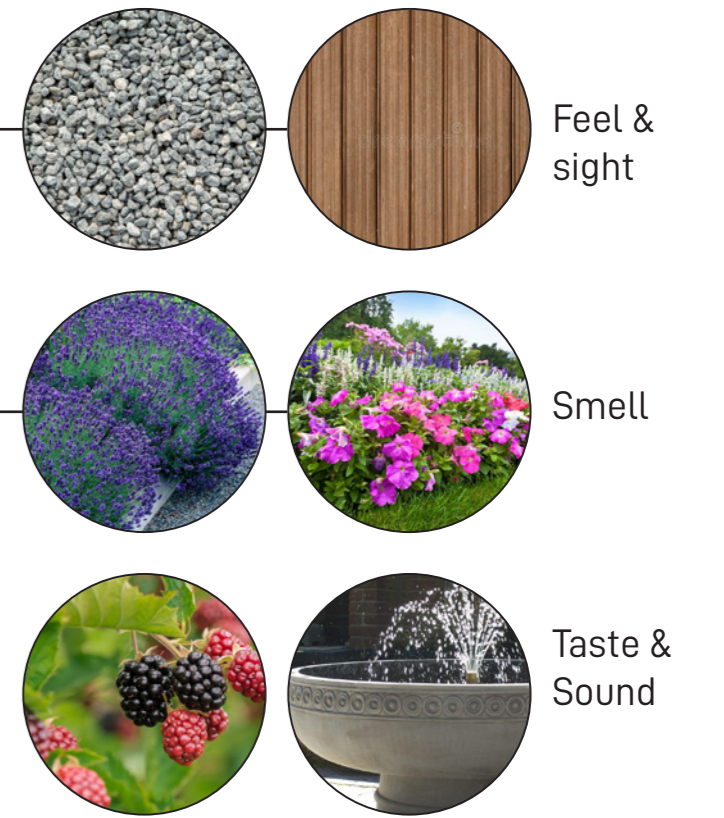
GROUND FLOOR

Dementia daycare
3 activity rooms
6 group rooms
2 medical rooms
outdoor spaces
sensory garden

SPATIAL PROGRAM



CHARACTERISTICS

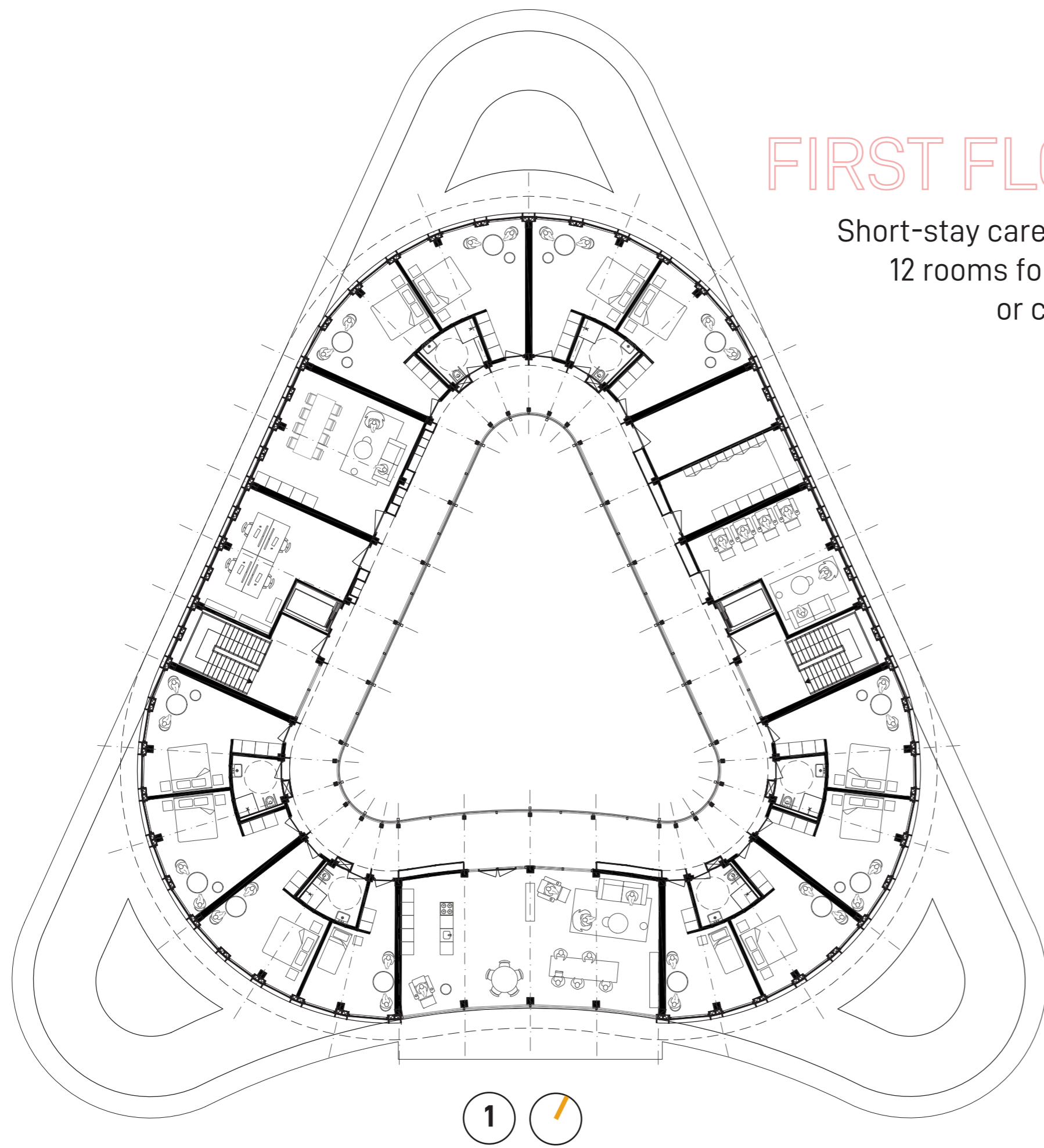


Distinction between groups and spaces with own themes



DAYCARE

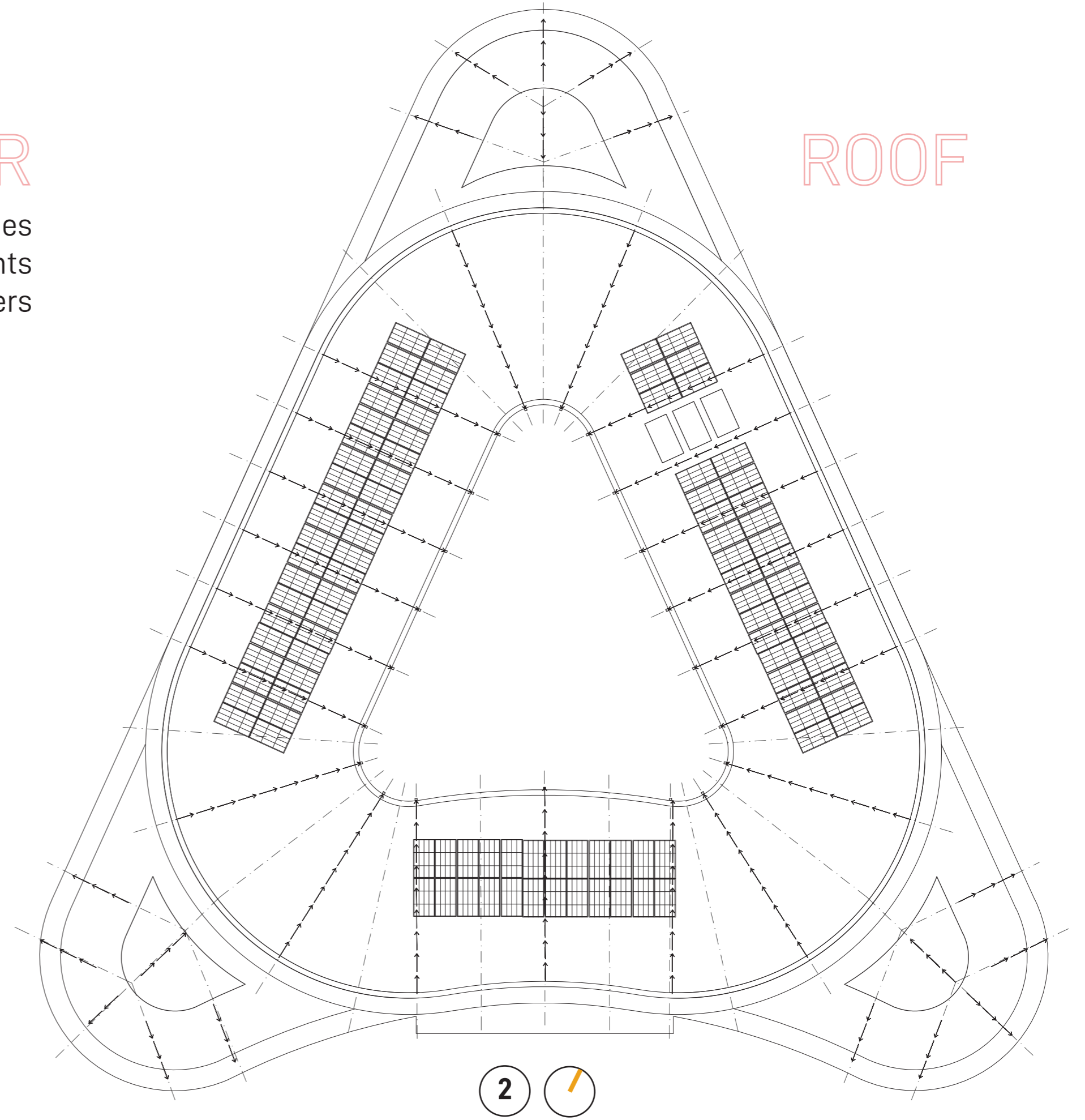
BUGRA ATCIYURT | 5248035 | 04-07-2023 | DESIGNING FOR HEALTH & CARE



FIRST FLOOR

Short-stay care facilities
12 rooms for patients
or caregivers

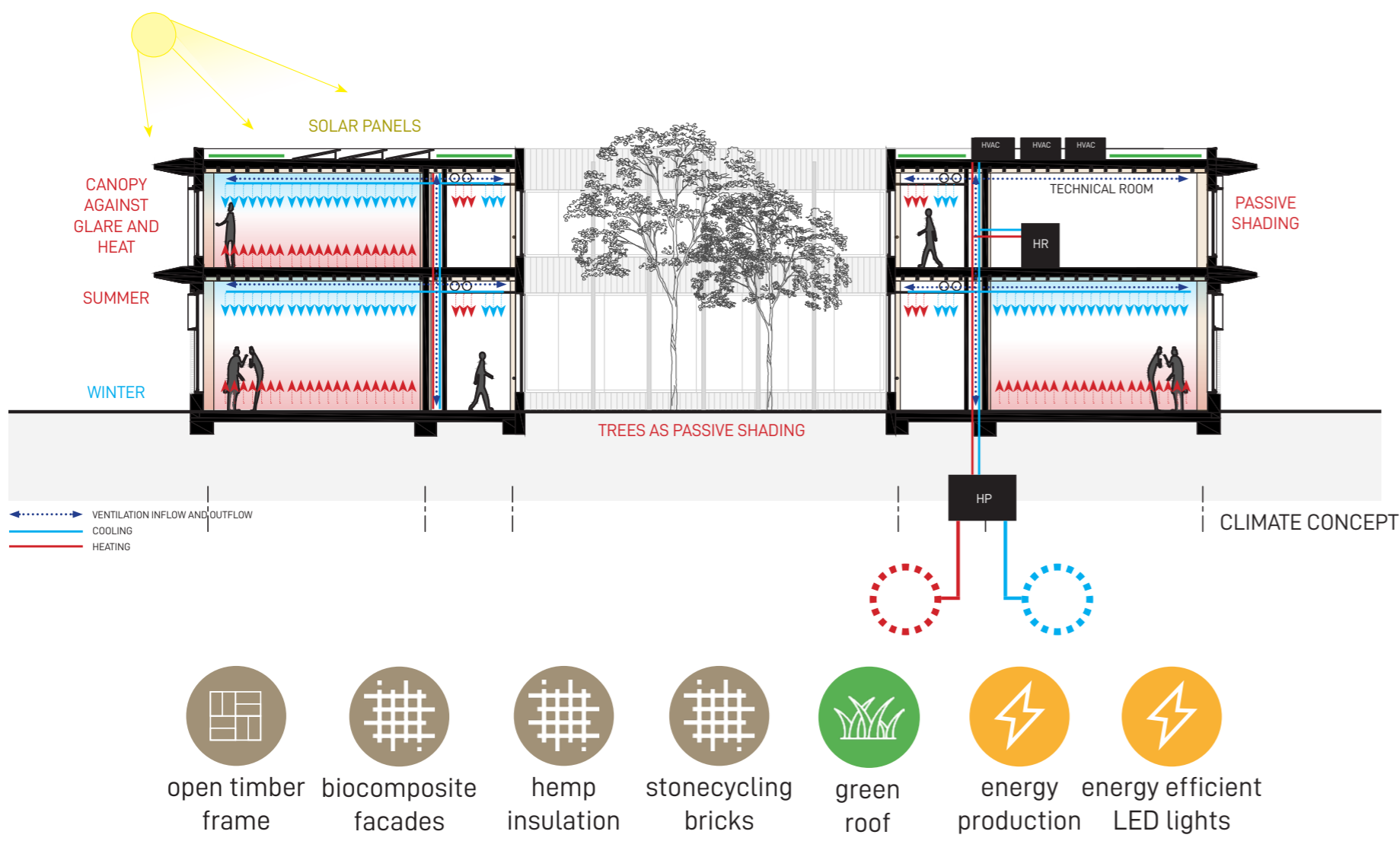
1



ROOF

2

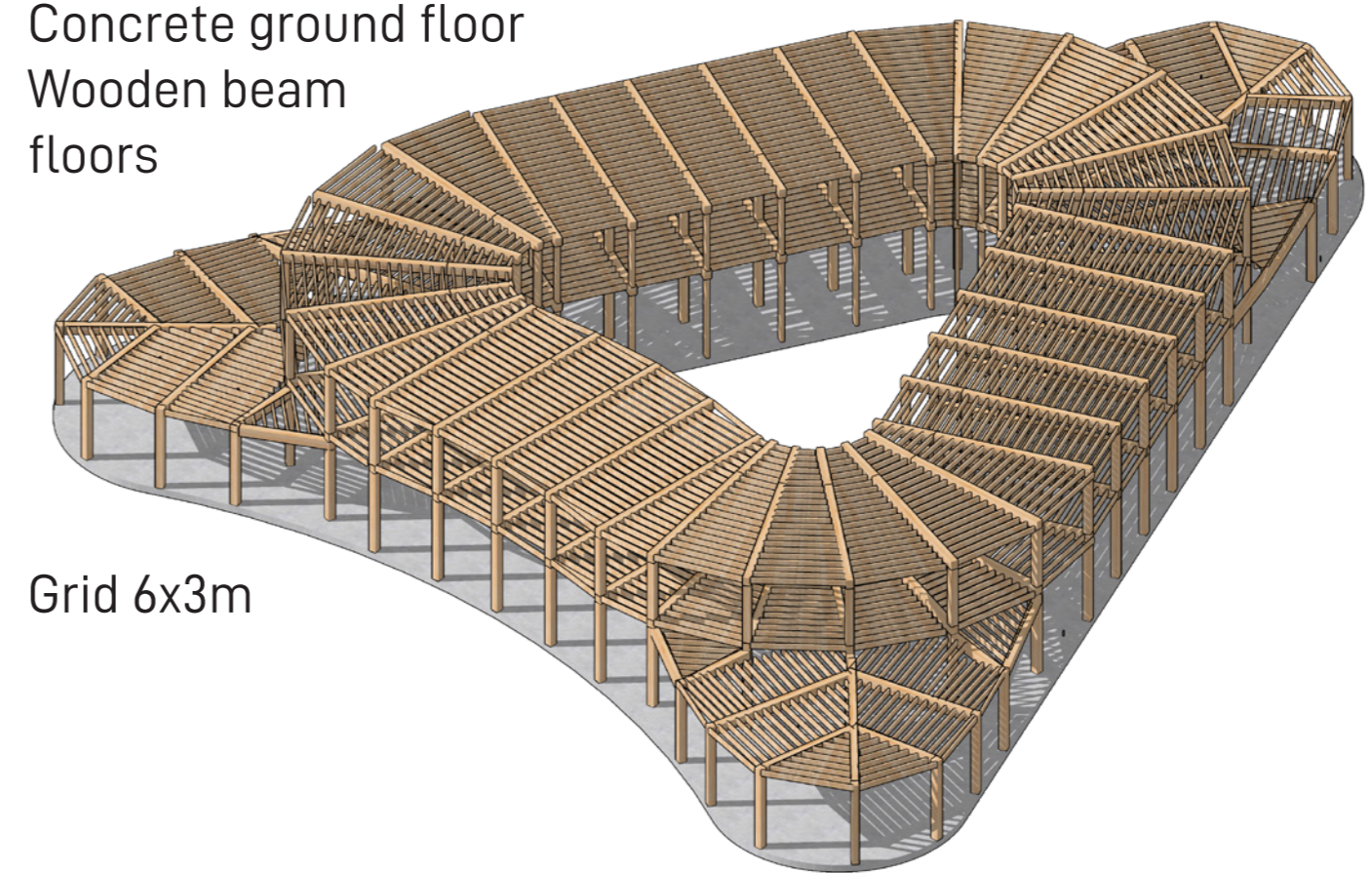
CLIMATE AND SUSTAINABILITY



STRUCTURE

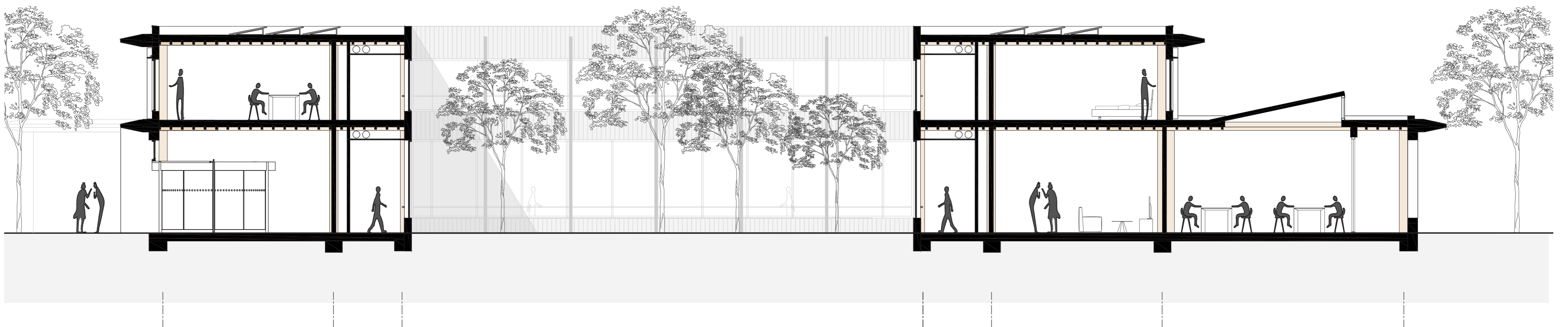
CLT STRUCTURE

Concrete ground floor
Wooden beam floors



Grid 6x3m

SECTION AA

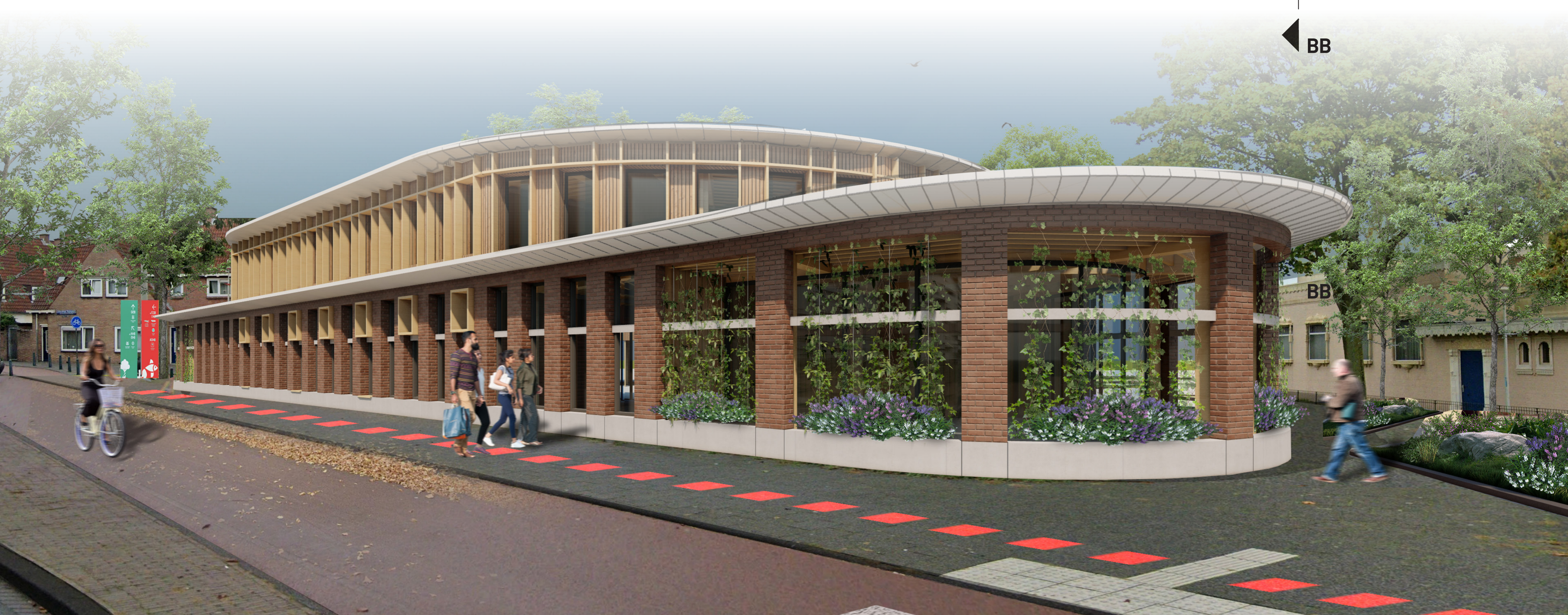
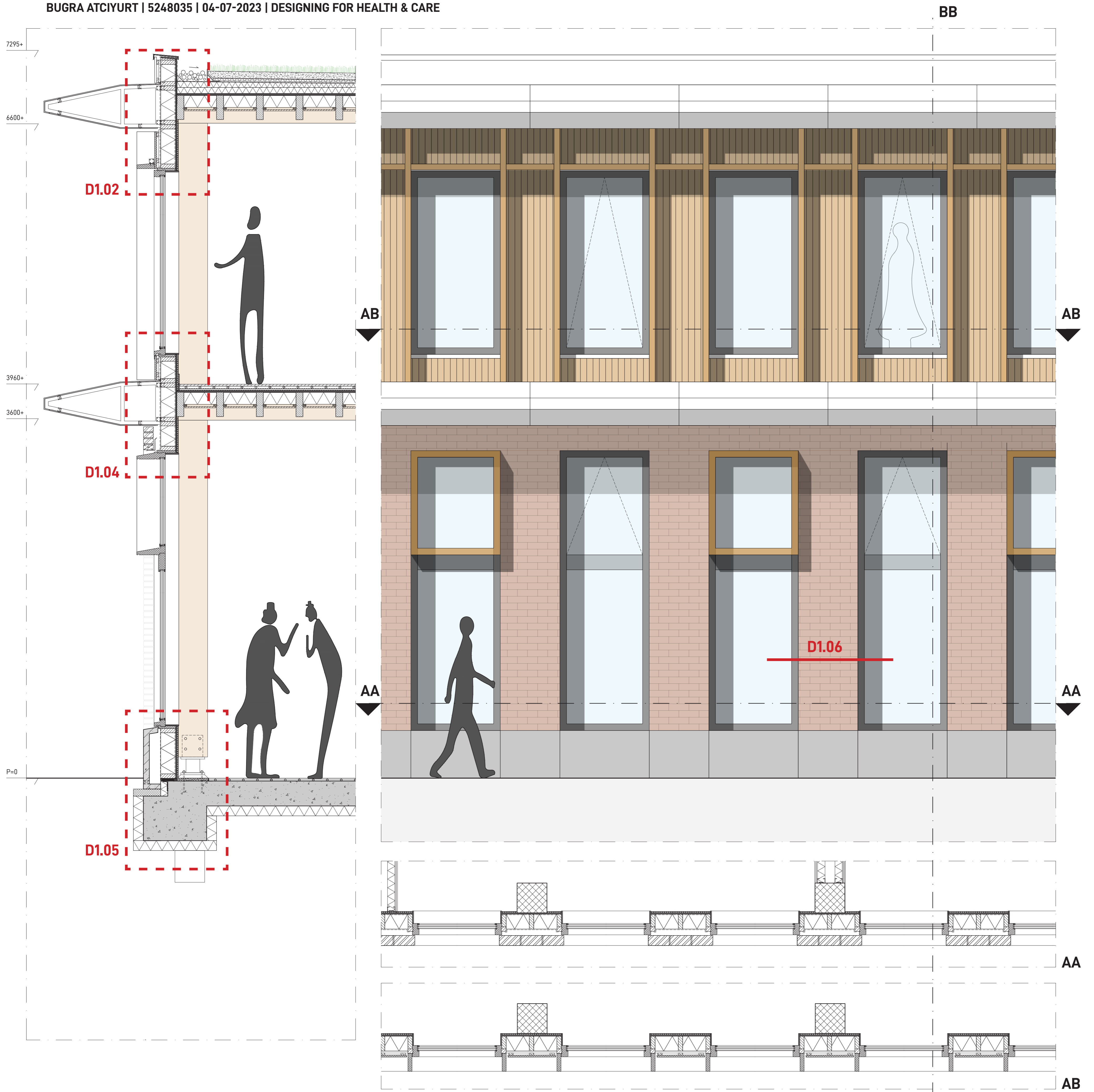


ELEVATION WEST FACADE



DAYCARE

BUGRA ATCIYURT | 5248035 | 04-07-2023 | DESIGNING FOR HEALTH & CARE

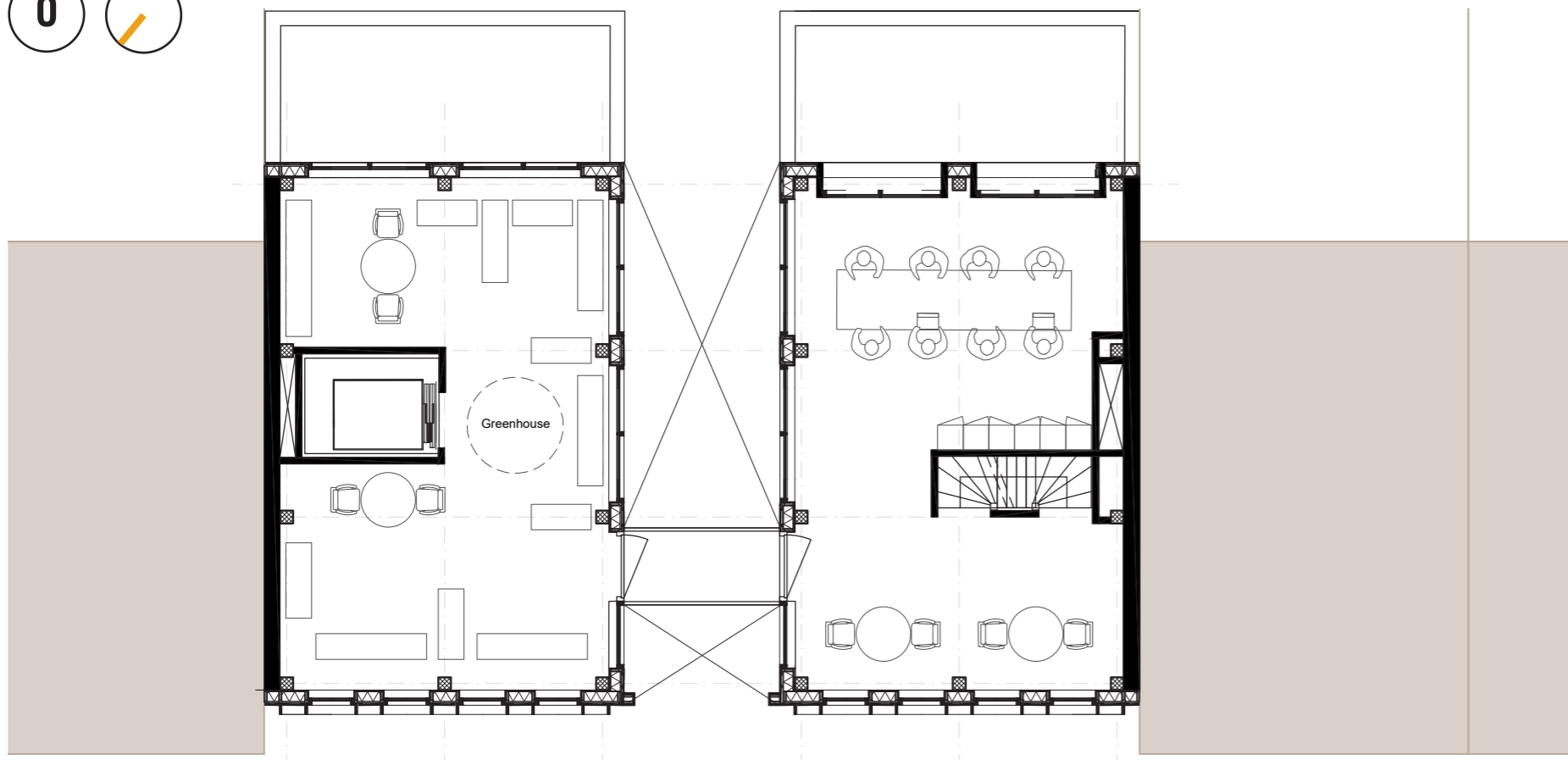


NURSING STATION

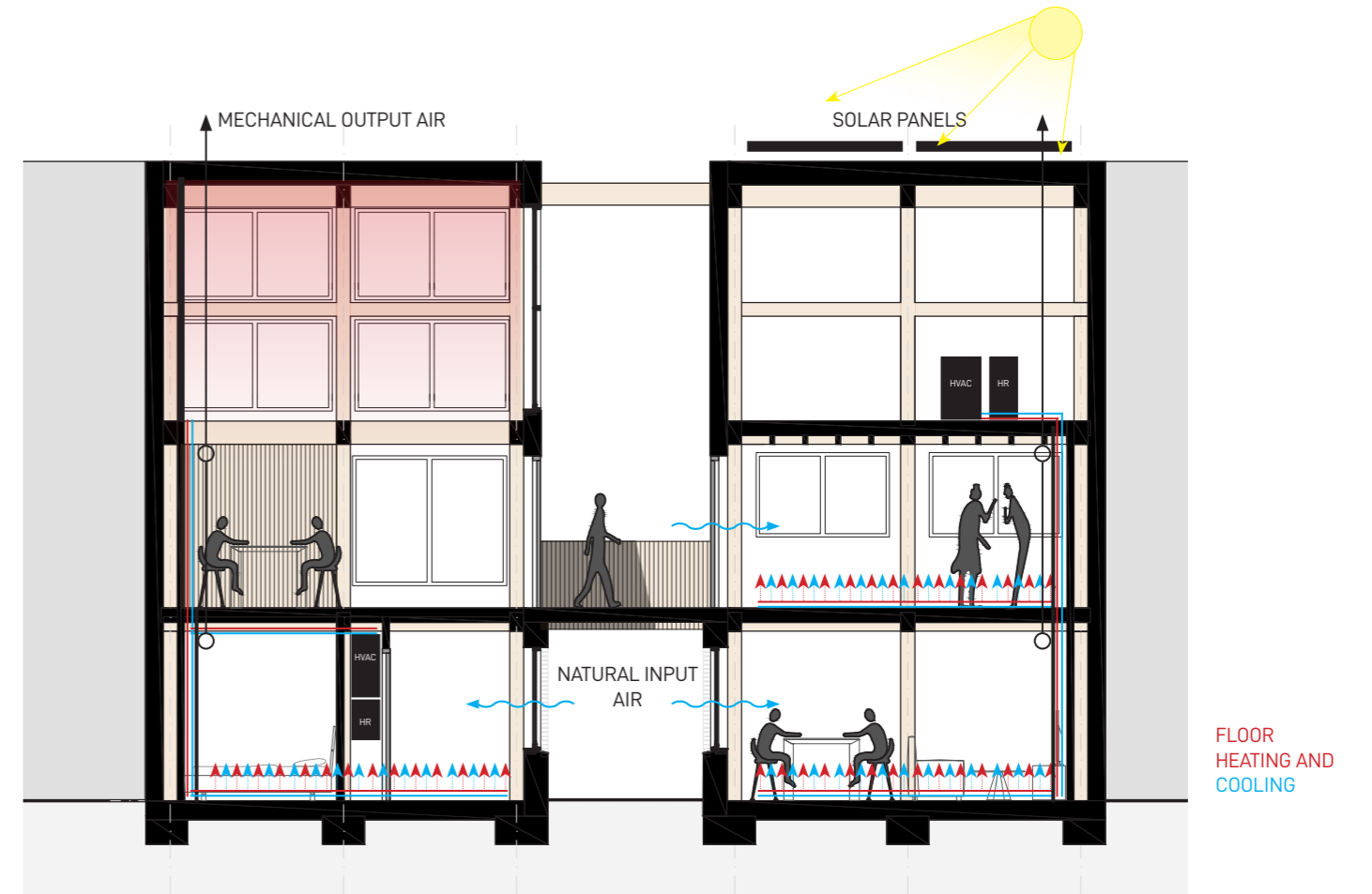
BUGRA ATCIYURT | 5248035 | 04-07-2023 | DESIGNING FOR HEALTH & CARE



0

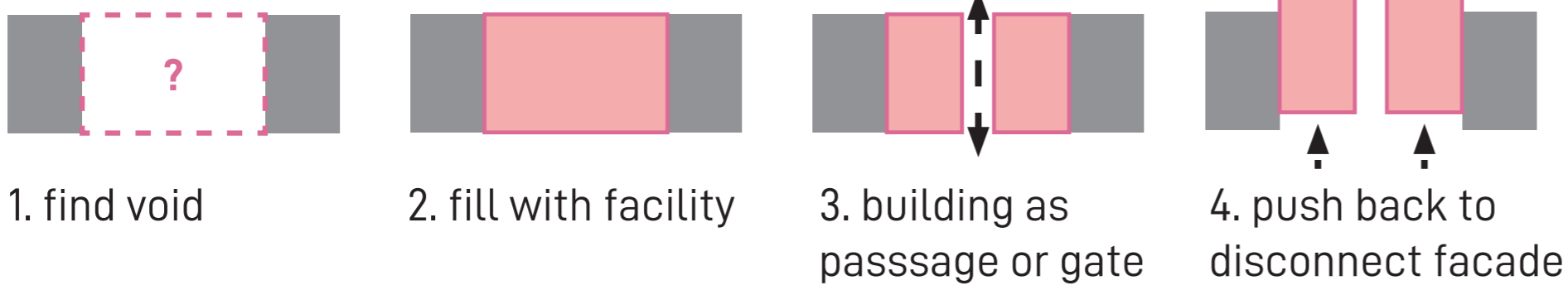
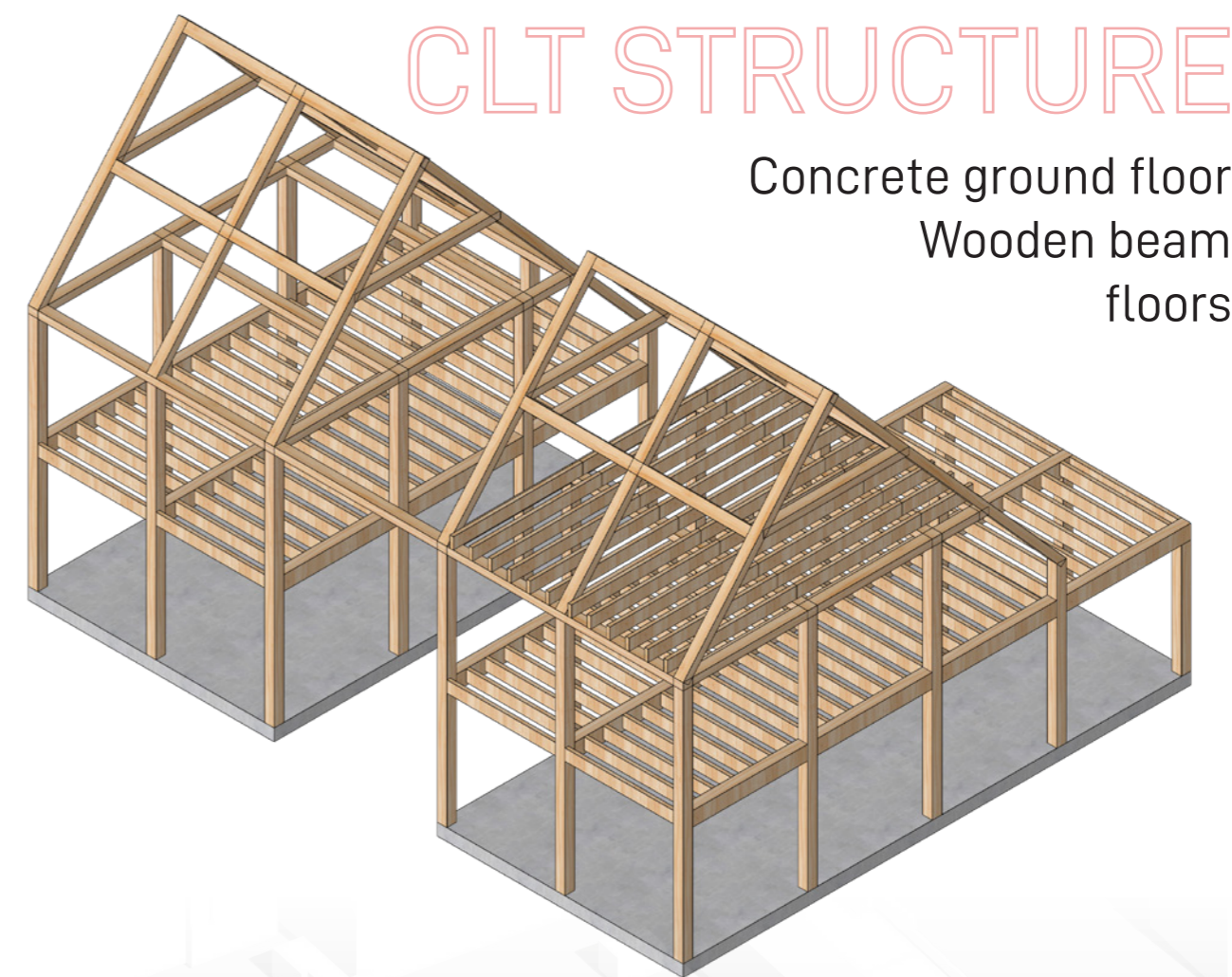


1



CLT STRUCTURE

Concrete ground floor
Wooden beam floors



NURSING STATION

BUGRA ATCIYURT | 5248035 | 04-07-2023 | DESIGNING FOR HEALTH & CARE

