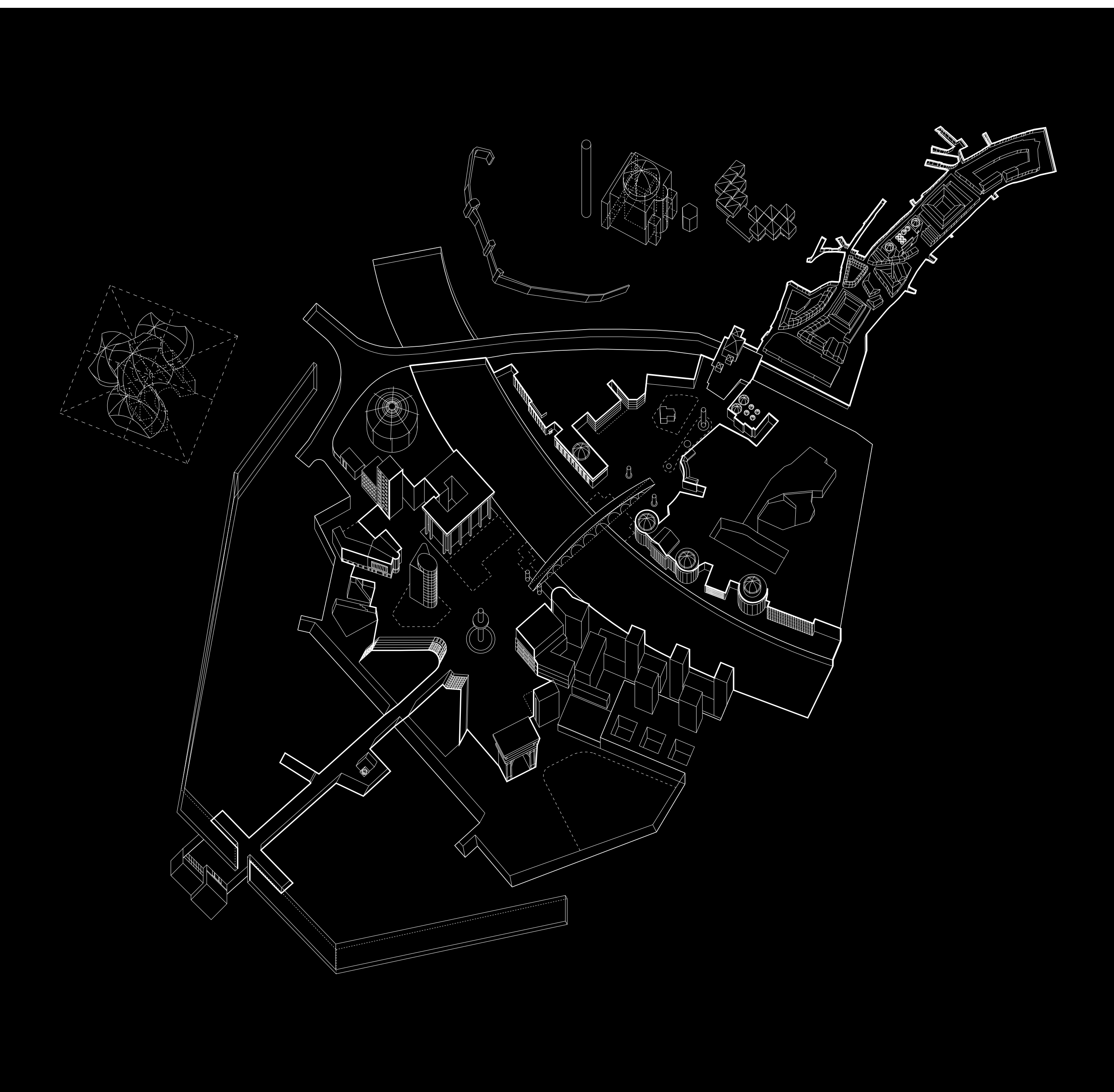
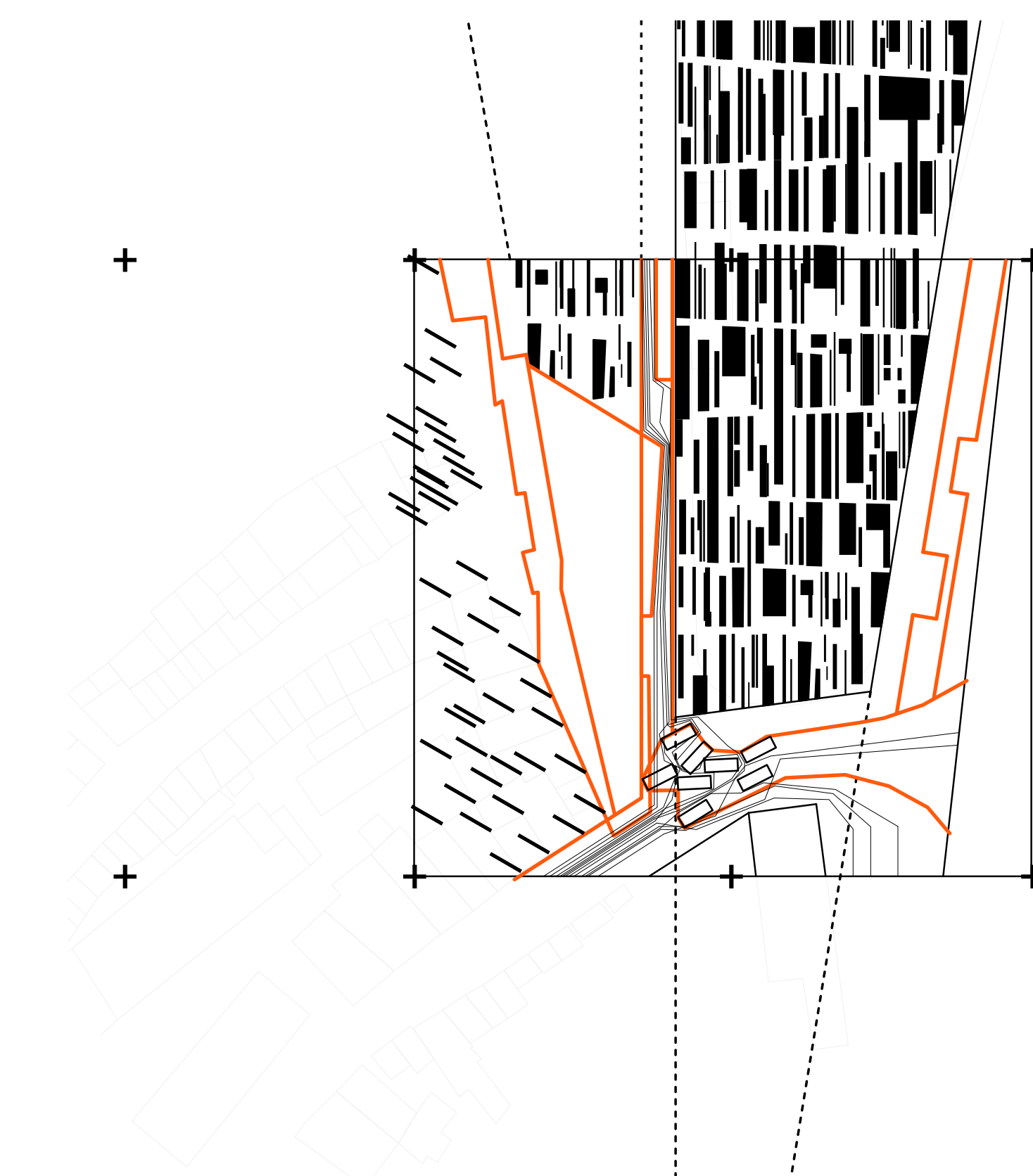


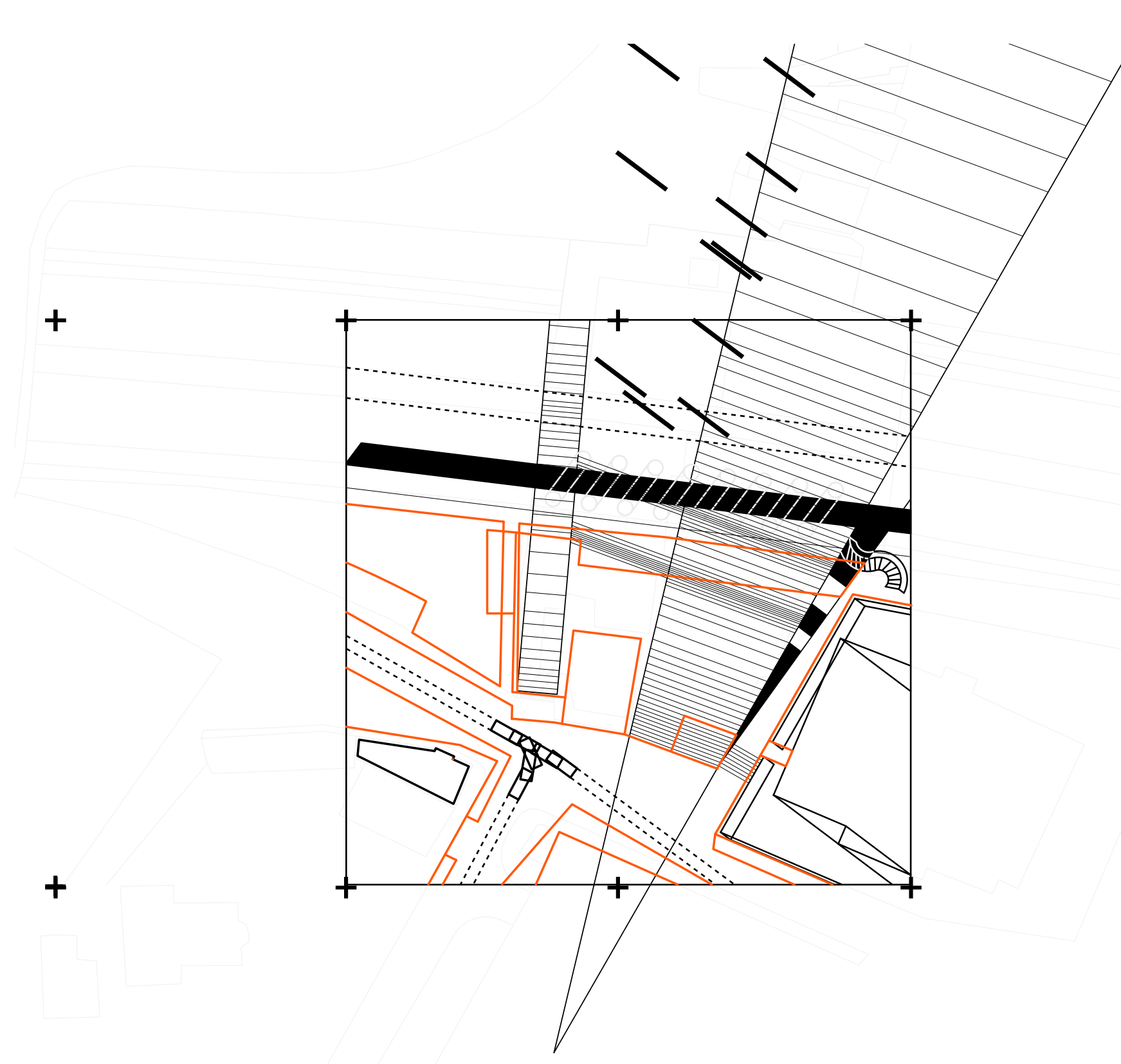
A STRATIFIED URBAN LANDSCAPE | rituals within an ideal image | frontside and backside | SKOPJE | border condition & territory



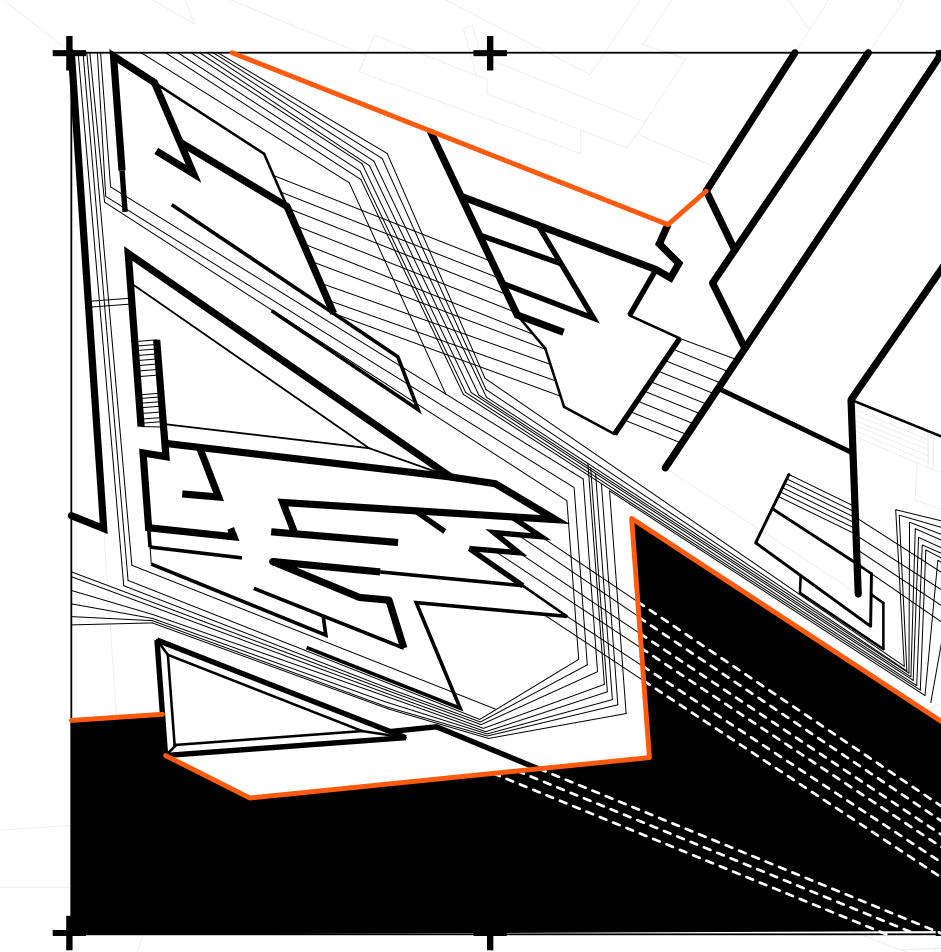
pit pazar, the biggest bazaar of macedonia, located in the end of main axis
 authenticity, exposing the 'real' people and 'real' city story
 multi-formity, a wonderful labyrinthine box
 ange everyday, but the pattern of spatial narrative is frozen into the impressive spatial pattern



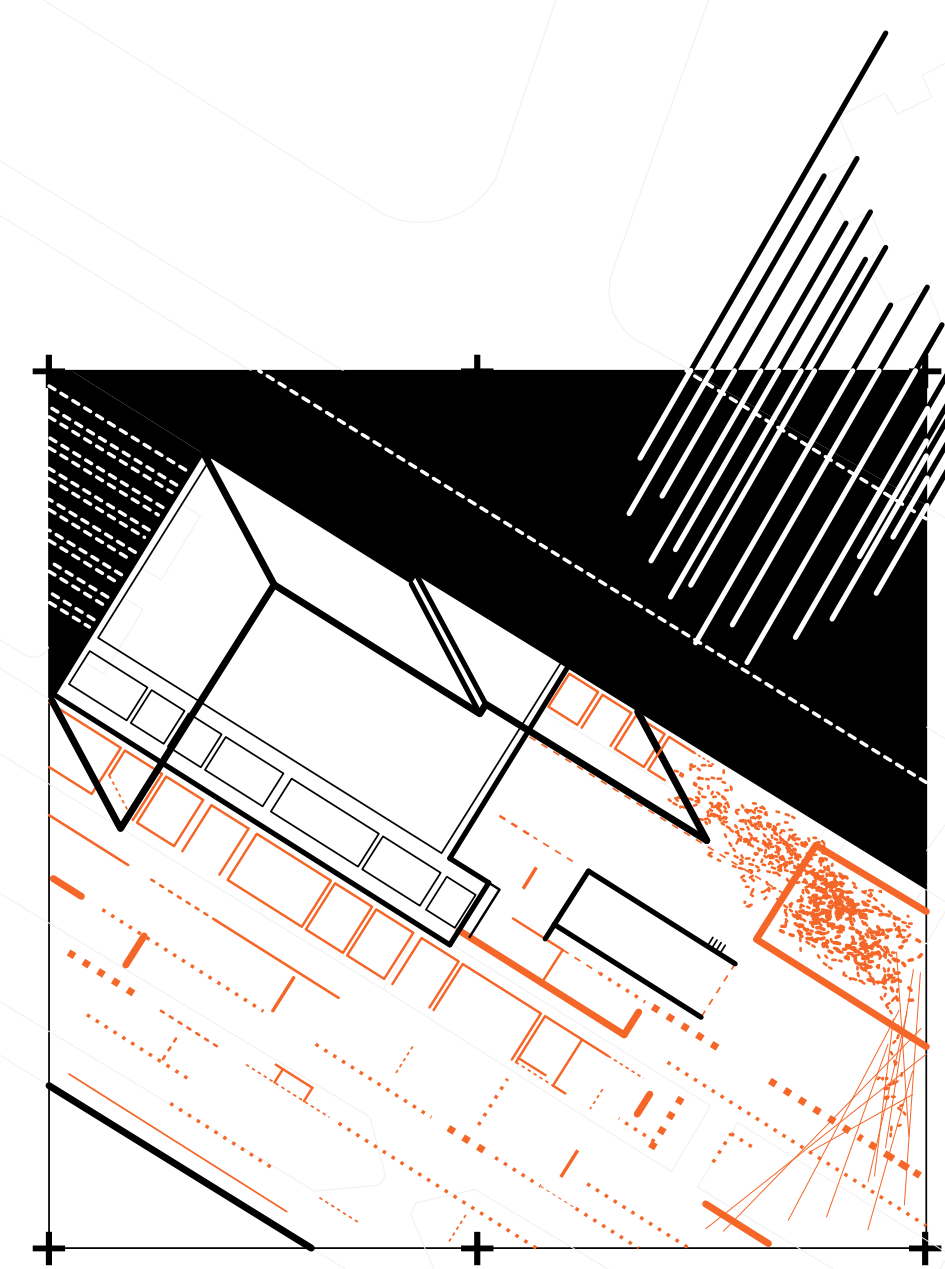
interstitial space, between the "old" town and the "new" infrastructure
street vendors, change through the day, people hawking, bargaining and arguing
backstreet, suddenly entering a mysterious place, mess but lively
space of vernacular, the language only known by the natives



entrance, transition from the modern city of kenzo tange to the memory of turk history
bridge, physical borderland connecting front and back, up and down
stair, shifting in the vertical layer
underground, concealing a backside world without notification



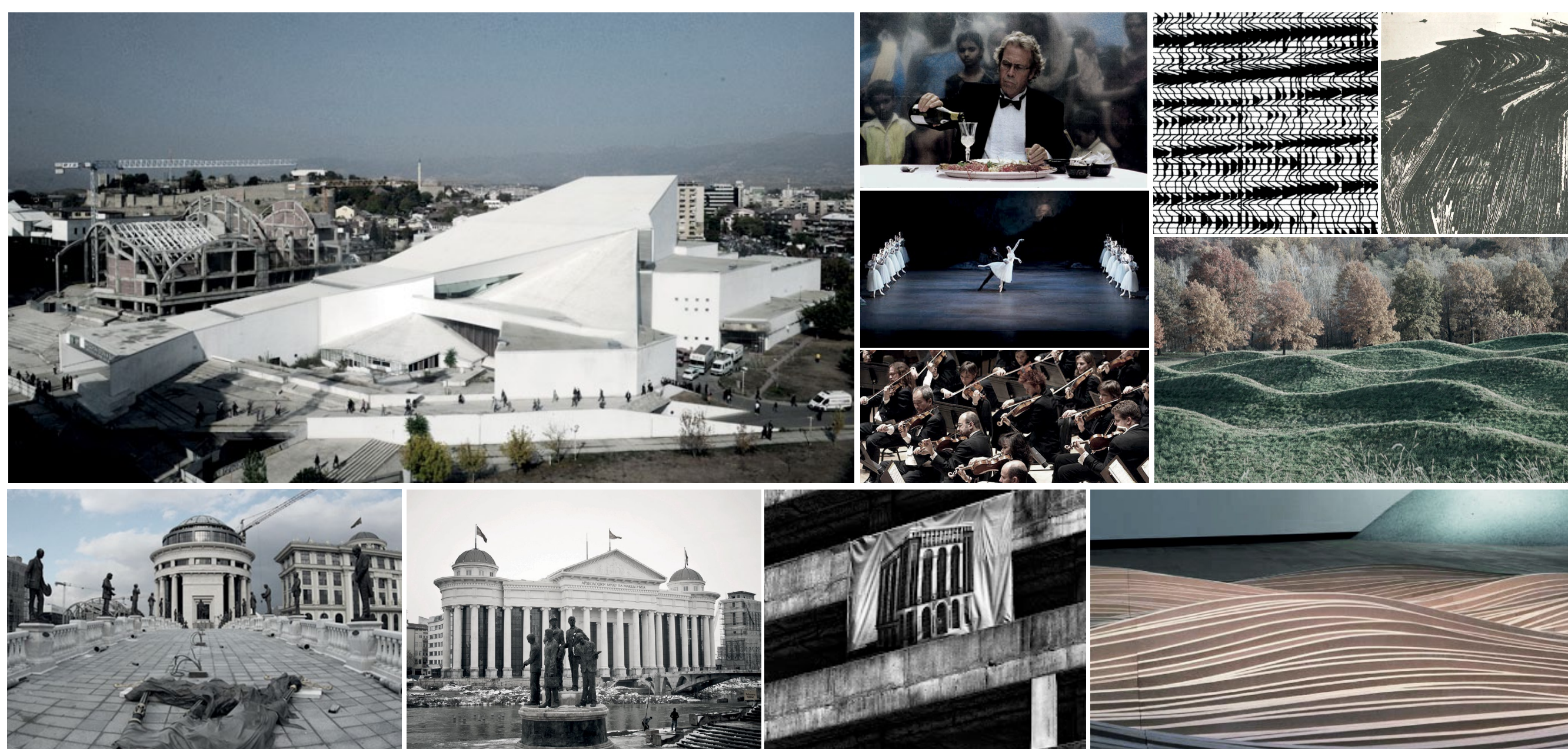
opera house, the previous icon of skopje, the peak of after-earthquake reconstruction
loss, from frontside to backside, public space is invaded by the institutional power
reproduction, movement and new construction transform the enclosure of plaza
trace, time and human activity drawing within the ground



ruin, memorial and recorder of city agony of 1963 earthquake
 ruin behind ruin, a new ruin behind the old ruin, one is showed, one is folded
 trace, clues of the demolished building
 reoccupation, shelter and treasure for the vagrant

FRONTSID

The frontside is an ideal image, which is constructed as a showplace to present the bourgeois ideology. The aesthetic of the landscape on the surface will be the strategy to unify the otherwise chaos caused by the construction of different periods. And build up an ideal cityscape. The frontside is an ideal image, which is constructed as a showplace to present the bourgeois ideology. The aesthetic of the landscape on the surface will be the strategy to unify the otherwise chaos caused by the construction of different periods. And build up an ideal cityscape.



BACKSIDE

Backside image shows a different scape that is defined by the calculated traces of the everyday rituals. Because of the authenticity of the backside image, it is a real and special treasure to the city. However, no matter the esthetic value of old opera house and the programmatic value of traditional ritual is forgotten by more and more people. Like the rooftop of MOB, traditional turkish bath, folk dancing and annual epiphany.

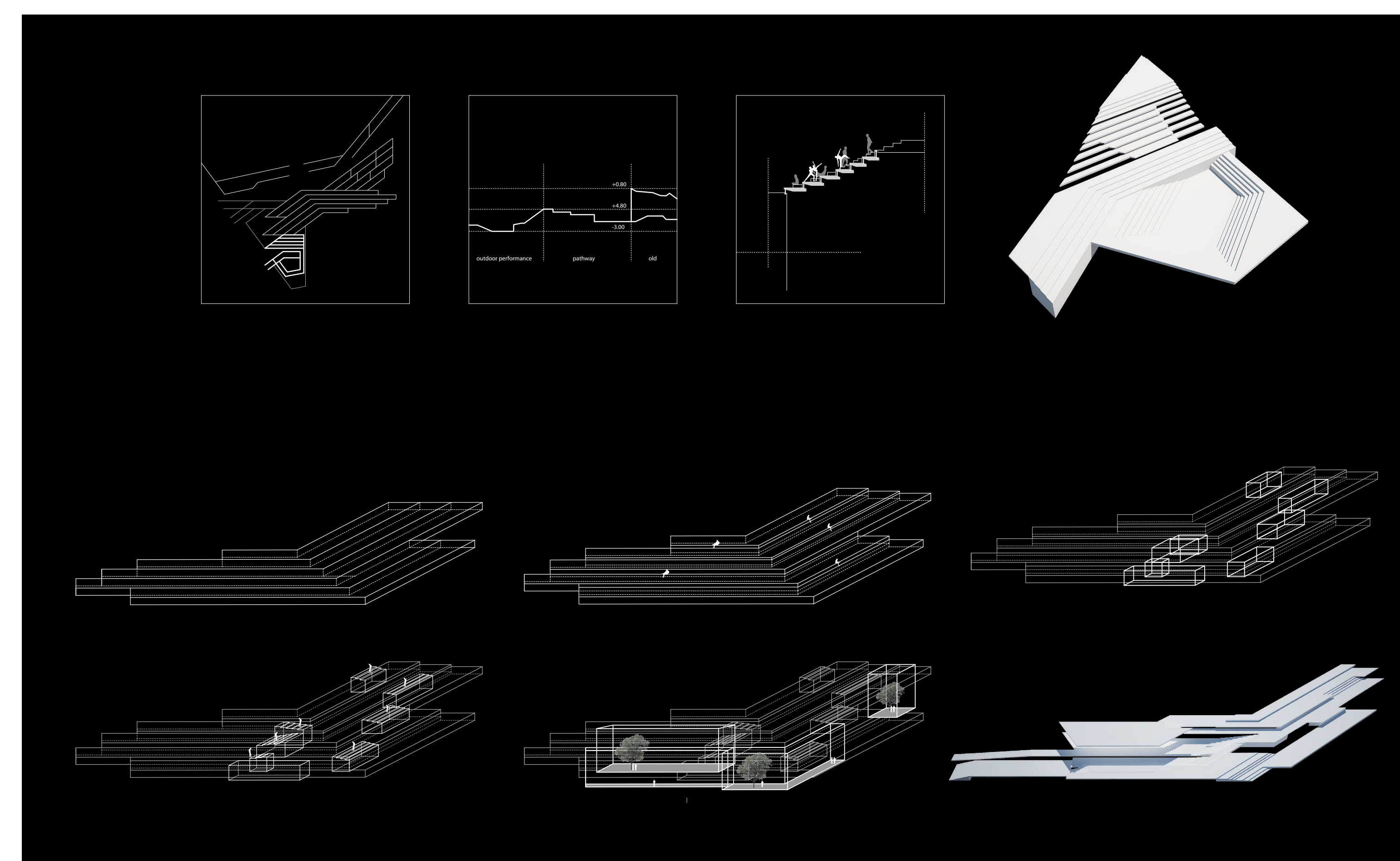
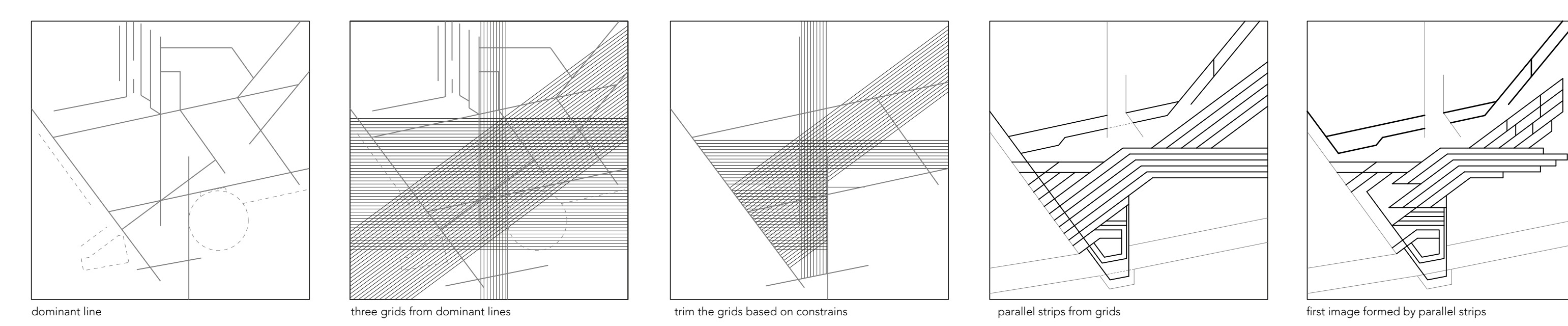
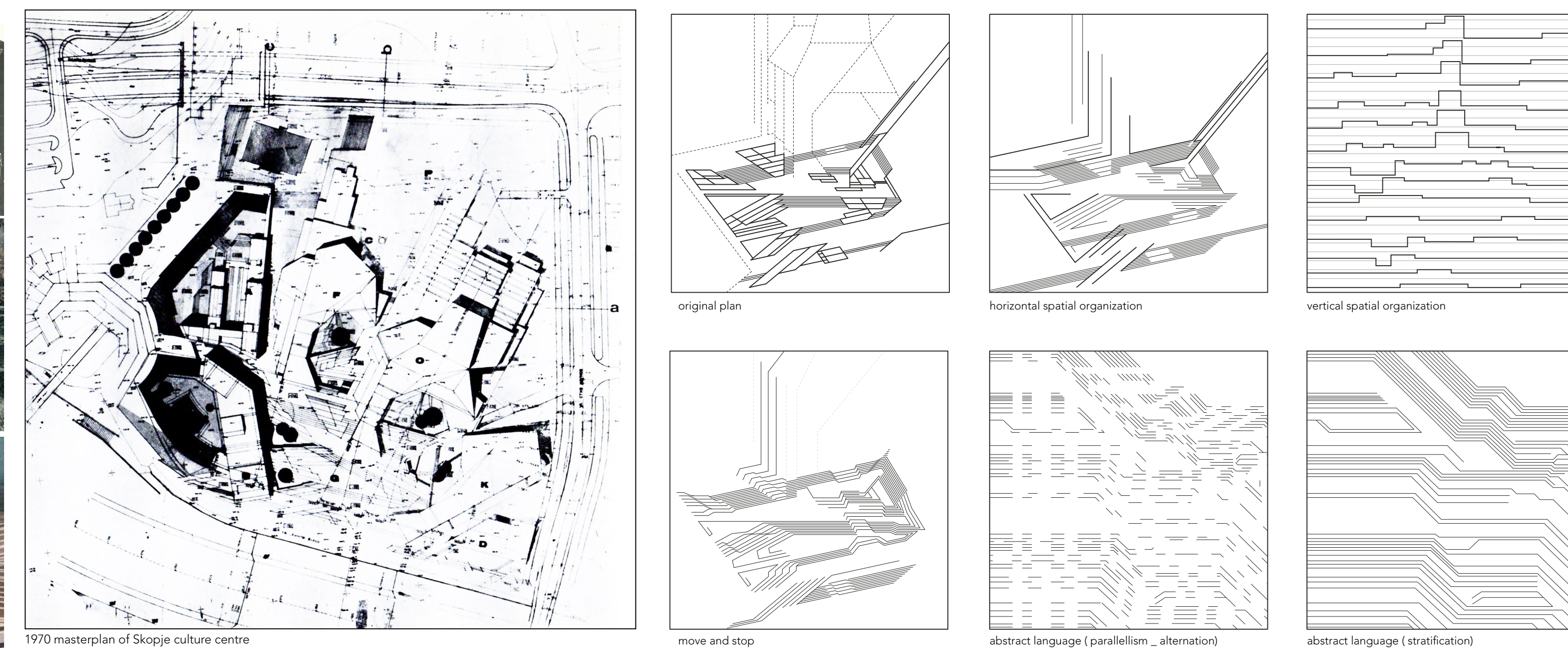
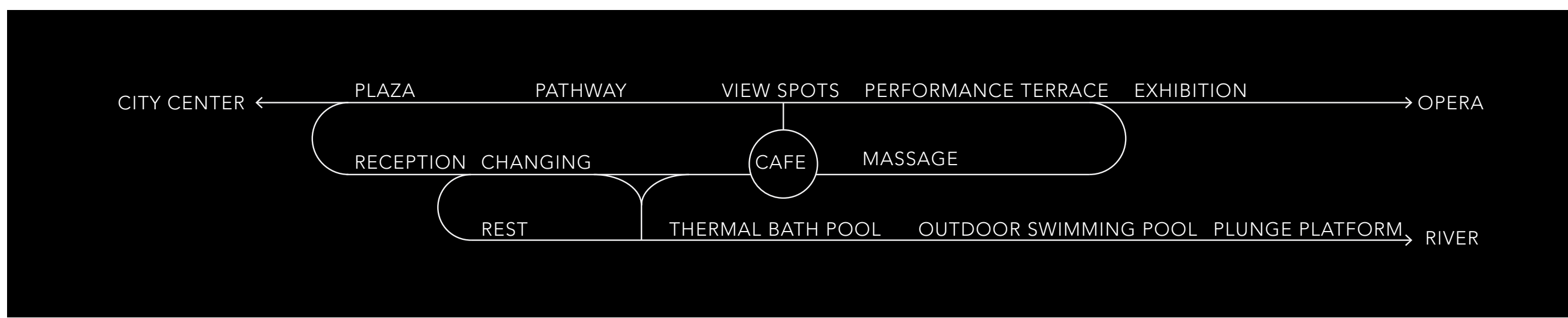


FRONTSIDE (ideal image) ↔ interface ↔ BACKSIDE (ritual)

INSTITUTION OPERA BALLET ORCHESTRA

surface

[PARK] PUBLIC BATH ANNUAL EPIPHANY PARK



1.1.1.1. Extended Landscape

The rooftop landscape is external which is becoming the a new playing, parking. The texture of the land is role on unifying the chaos of the city space behind the institutional building.

2007 Urban Terrace

The urban Tarsox is conducted all including the south of city center areas have different functions. Some space. Other is forming the outdoor sitting.

2011. 12. 12.

The parallel pathways are advised by the leading walls. With intention underground both space is like a larder around.

Submerged Water Use

The walls are enclosed that are to be used, are forming the new terrain, it covers the stairs. Only when someone can experience the space. In the work of the plan, the movement is

