

HET STENEN HOOFD

a crematorium in 't IJ

Anthony Slothouber  
1212028

mentors:  
R. Nottrot  
B. Olsthoorn  
H. Muhl



# HET STENEN HOOFD

## analysis

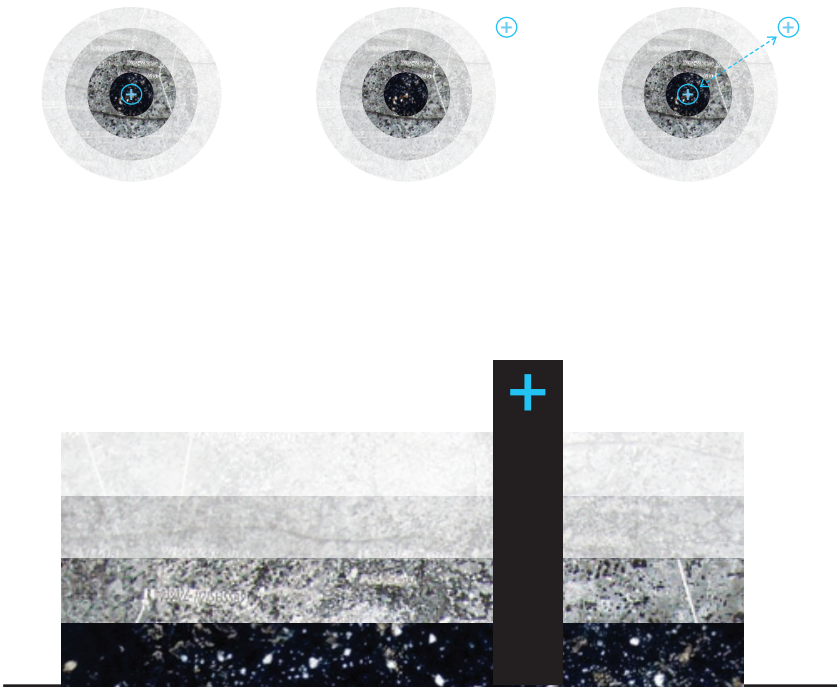
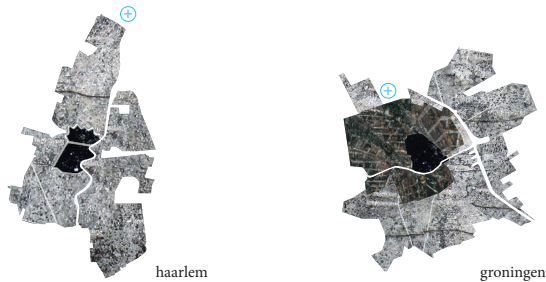
The first crematorium in the Netherlands was build in 1913, long before the official legalization of cremation (1955). Today, the Netherlands hold 72 crematoria. During the analysis of all crematoria in the Netherlands something in particular was noticable: Almost all crematoria are situated outside the borders of the city it belonged to (1). With some exceptions, for instance in The Hague. However being placed on the lot of a cemetery isolated by a rich green surrounding, this crematorium has also lost the connection with its city. A number of reasons can be thought of which have contributed to the common placement of this typology (3).

Today, 70% of the people in the Netherlands live in urban areas. And this amount is still rising. For a lot of people, the connection with a certain city is very important. Some people are born and raised in a city, they live there their entire lives, work there, find love, build a home and eventually pass away in that same city. The city has become an inextricably part of their life. Being such an important element, this relation with the city should therefore not be evaded, but it should be embraced, even in the parting. I therefore plea for a crematorium not outside of the city, not inside the city, but a crematorium of the city.

Translating the horizontal transition between the busy city and the quiete sub-urban area into a vertical line, forms a building towards the sky. Reaching for the top, the sounds dominating the ground floor gradually exchange their life for an environment in which peace is undisturbed. Standing at a high level, the green peripheral view is now an urban view over its own city that extends towards the horizon.



3



4



2



1

1. crematorium 'hofwijk', city of rotterdam
2. almost all crematoria have been build outside the city borders in NL.
3. reasons for this:
  - nuisance from pollution
  - depreciation of housing
  - nature & peace
  - urban development
4. proposal for a crematorium in the city:
  - translating the horizontal transition into a vertical form.

# HET STENEN HOOFD

design

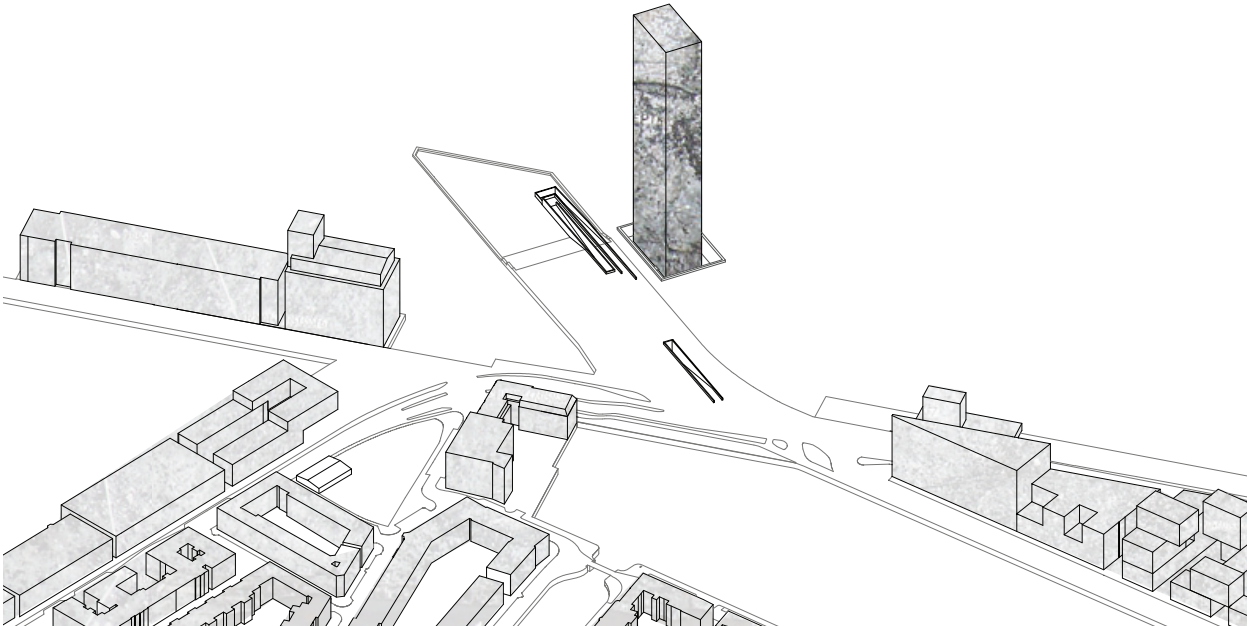
Having approximately 800.000 residents, Amsterdam is in need of a third crematorium. In my proposal, the new crematorium is placed at 'het Stenen Hoofd'. An old forgotten pier, which was formerly used as a seaport transshipment, in the Western part of Amsterdam alongside the river 't IJ. Originating from the end of the 19th century, this out-stretched vacant lot breaths out memories. Isolated by water of constant movement, it has become a place for remembrance.

Holding on to the strenght of the open space, the crematorium is placed in the water next to 'het Stenen Hoofd'. Separated by water, the two worlds - a horizontal place for remembrance and a vertical place for memorial - form a dialogue. The building penetrates the surface of the water due to a concrete enclosing element at its foot. This separates the building from the water. Therefore, when standing on the pier, the building seems to extend endlessly towards the bottom. Like a memorial stone it appears to rise from the water and emphasizes the movement towards the sky.

In the process of mourning, three important elements are to be distinguished: preparing - experiencing - processing (*in dutch: voorbereiden - beleven - verwerken*). These three different elements all come together at the crematorium.



5



8

Translated into a field of emotions, the 'climax' is experienced at the aula. Tension rises towards this climax and, if all is good, relief comes afterwards. To invigorate this, the emotion field is translated in the experience of the building.

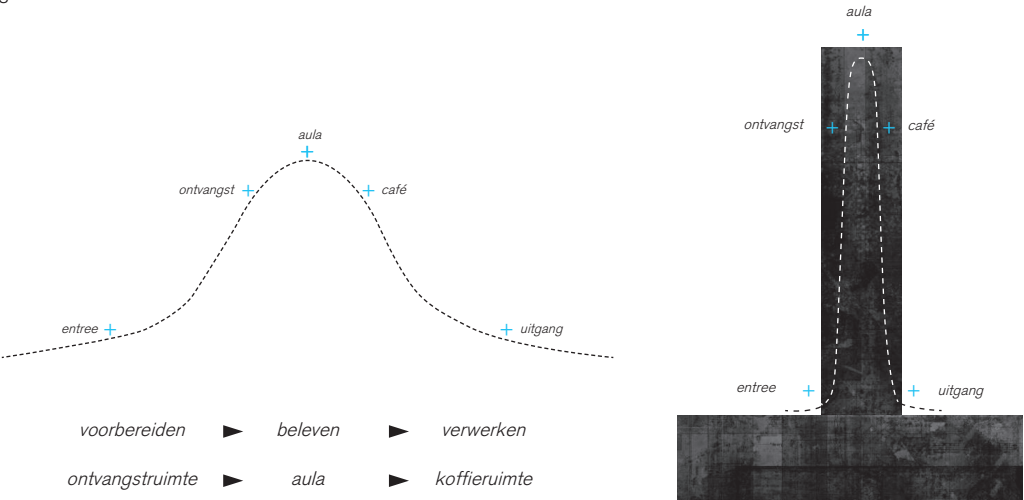


6

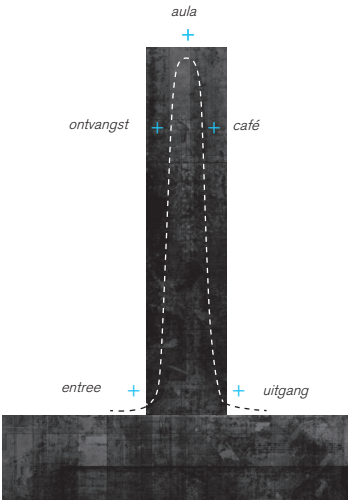


7

- 5. Amsterdam
- 6. 'het Stenen Hoofd'
- 7. a place for remembrance
- 8. integration of the design
- 9. emotion field
- 10. emotion field displayed on the design



9

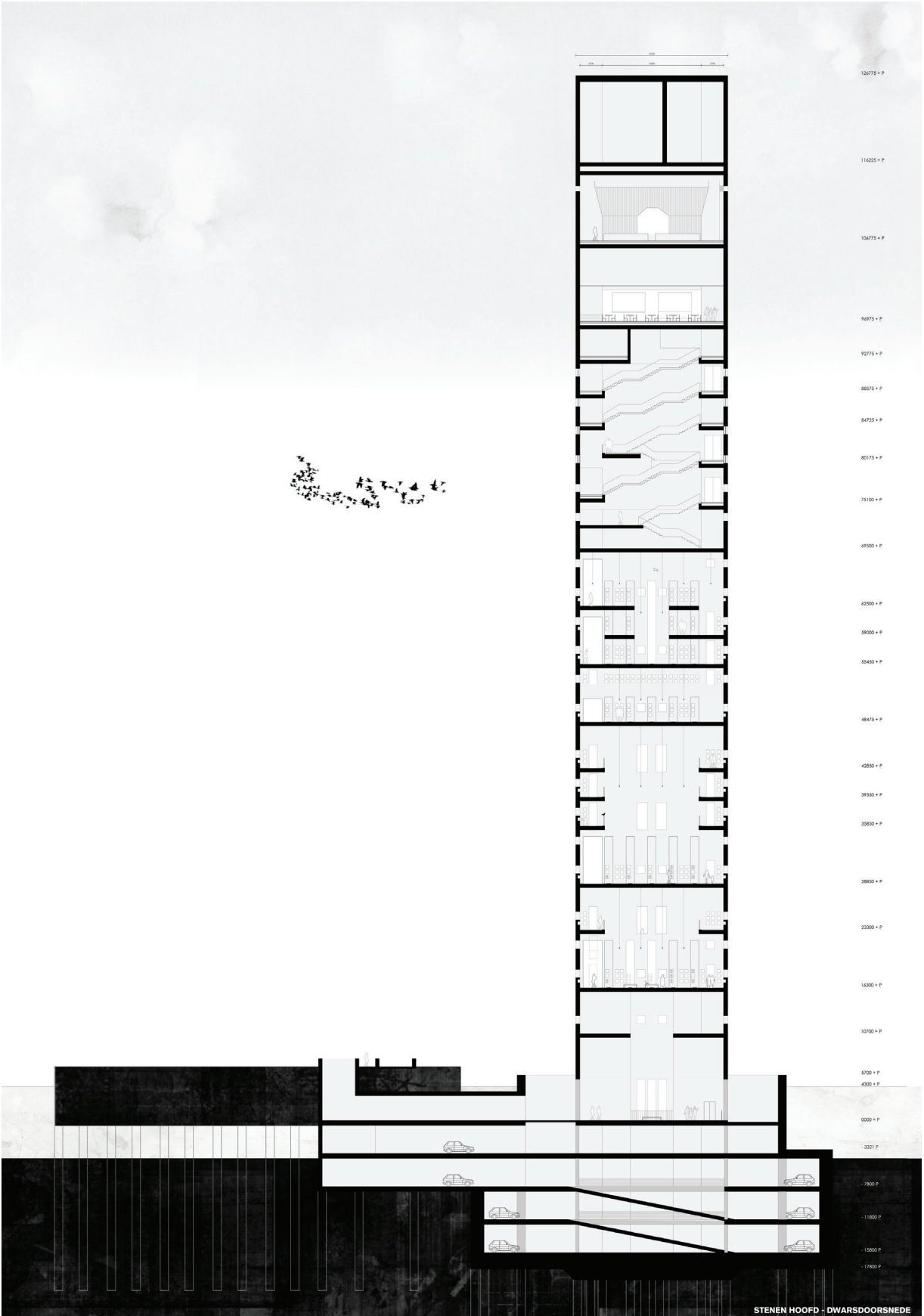


10

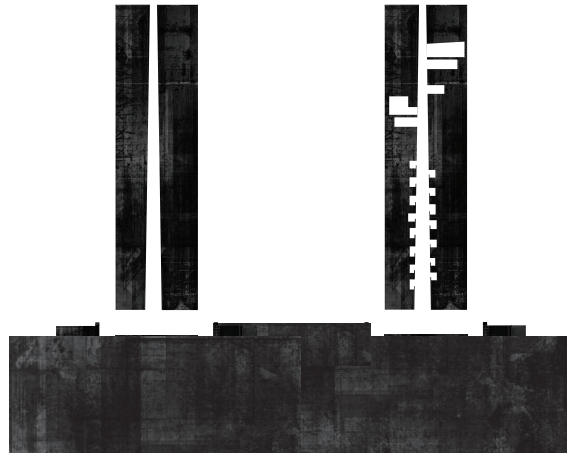






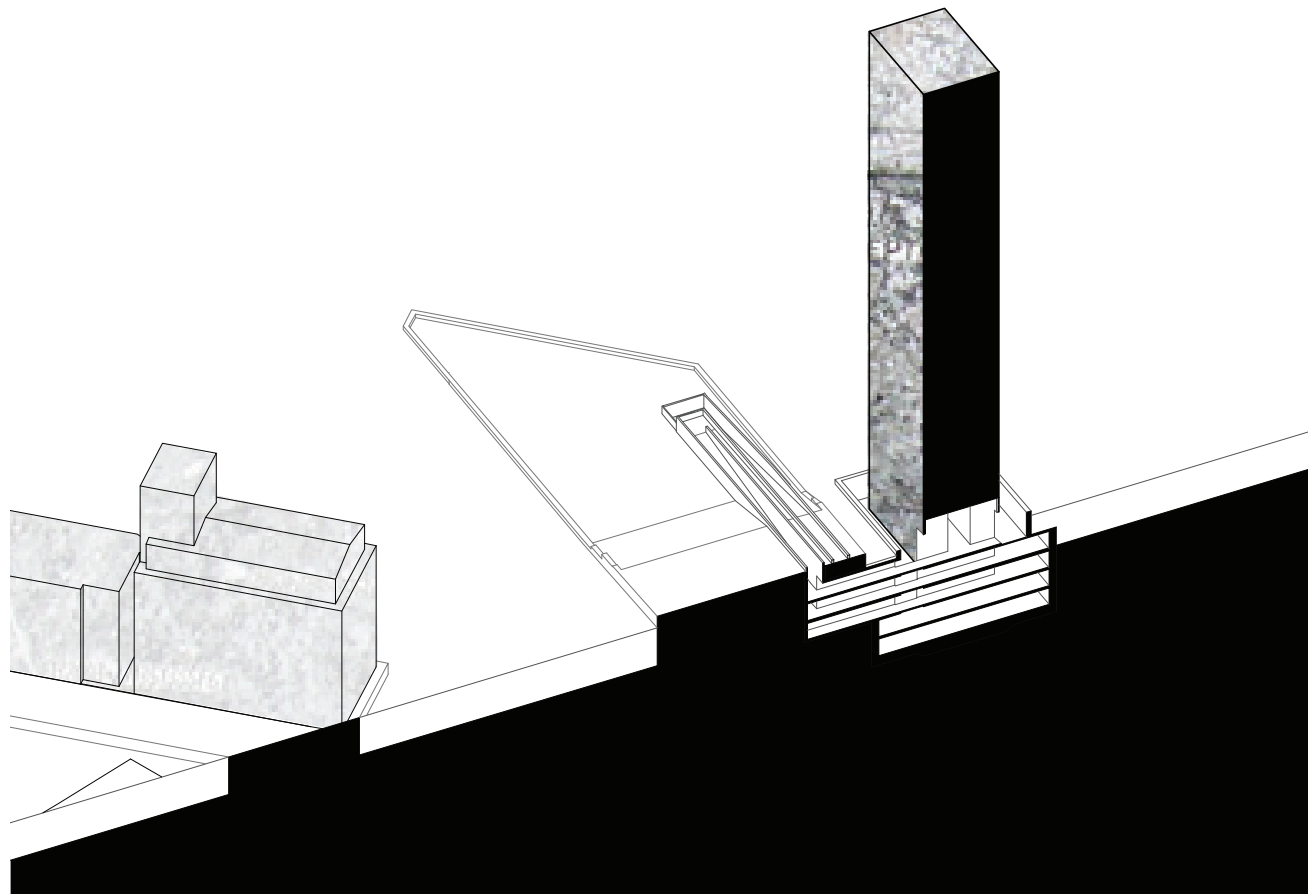






14

The building reaches a height of 126 meters and consists of a crematorium, a columbarium, an entrance hall and a parking space. The entrance to the crematorium lies under ground, visually separating the two elements by water. Descending into the ground, leaving your familiar world behind and replace it for another. The entrance hall is reached by a bridge. Build with a solemn character, the hall calls upon an urge for silence. Looking up, the heart of the tower unravels itself. The shaft is the core element of the building. It represents the symbolic path to heaven. The light from above shines like a bright light at the end of a tunnel. Other than that, it also functions as the main connective element, melting the different levels to one.



15



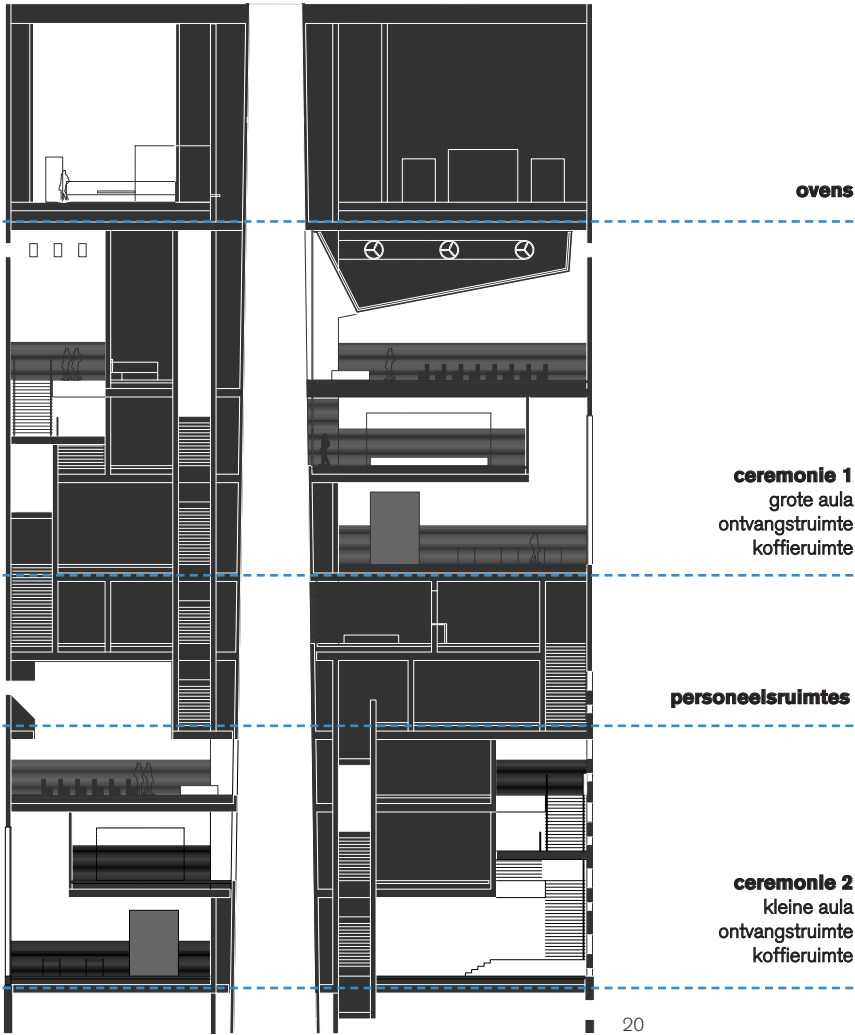
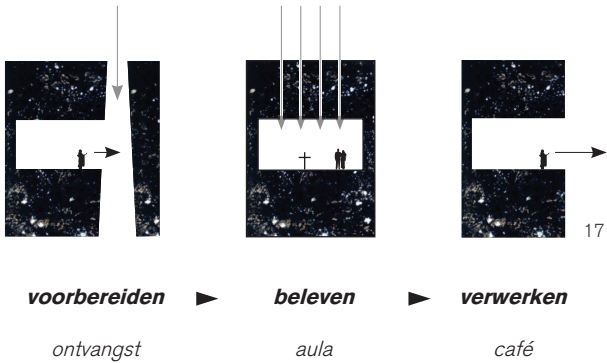
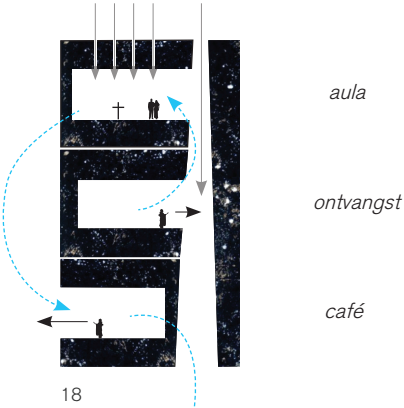
16

- 14a. pathway to heaven
- b. connecting element
- 15. cross section: entrance
- 16. the entrance hall



STENEN HOOFD  
crematorium

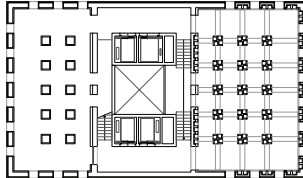
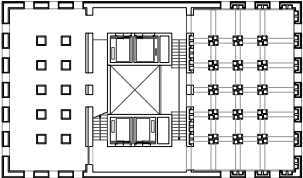
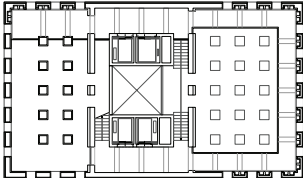
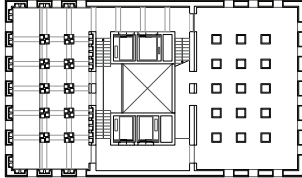
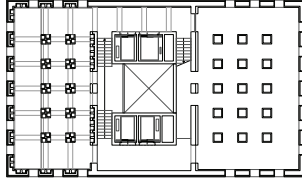
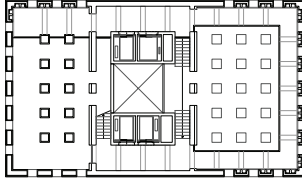
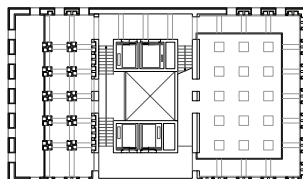
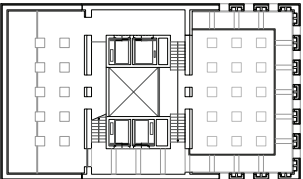
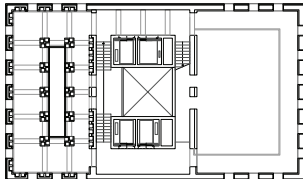
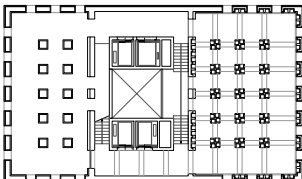
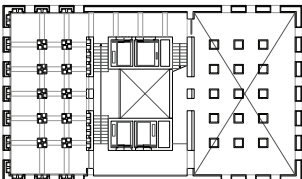
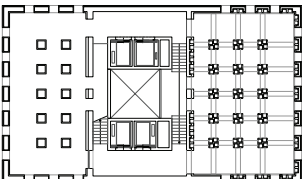
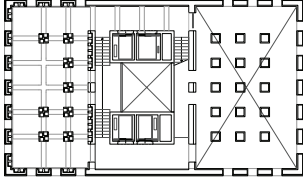
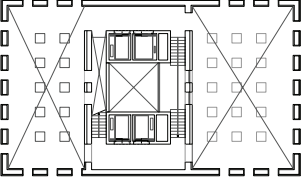
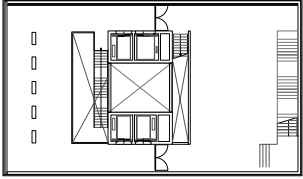
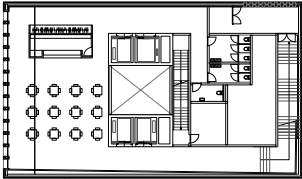
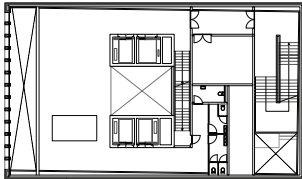
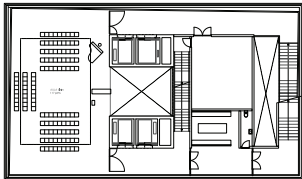
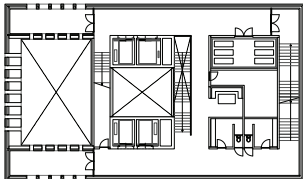
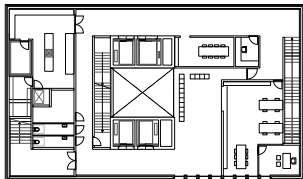
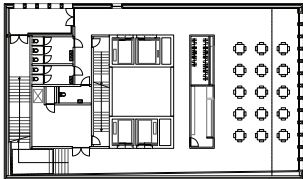
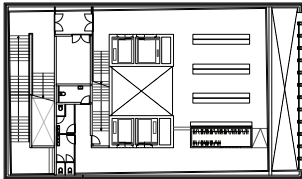
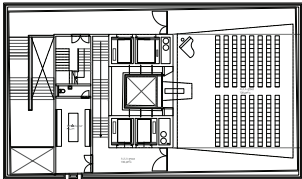
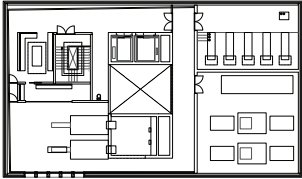
Located on the upper part of the tower, the crematorium consists of two ceremonial rooms, room for personnel and a place for the ovens, on top of the building. Derived from the experience of mourning, each of the three significative spaces in the ceremonial process have their own identity and meaning, but all together form a binding story. At the reception room, preparing for the upcoming ceremony, the attention is focused on the inside. A high staircase leads you to the aula. Here, at the space of actual parting, the focus is also inwards. If all is good, relief follows after the ceremony and takes the visitors with a route downwards to the cafe. There, the view to city opens up symbolizing the end of grief and the start of remembrance.



17. identity of the different spaces  
18. the three spaces combined  
19. view from the café  
20. longitudinal section of the crematorium

STENEN HOOFD

plans  
scale 1:200

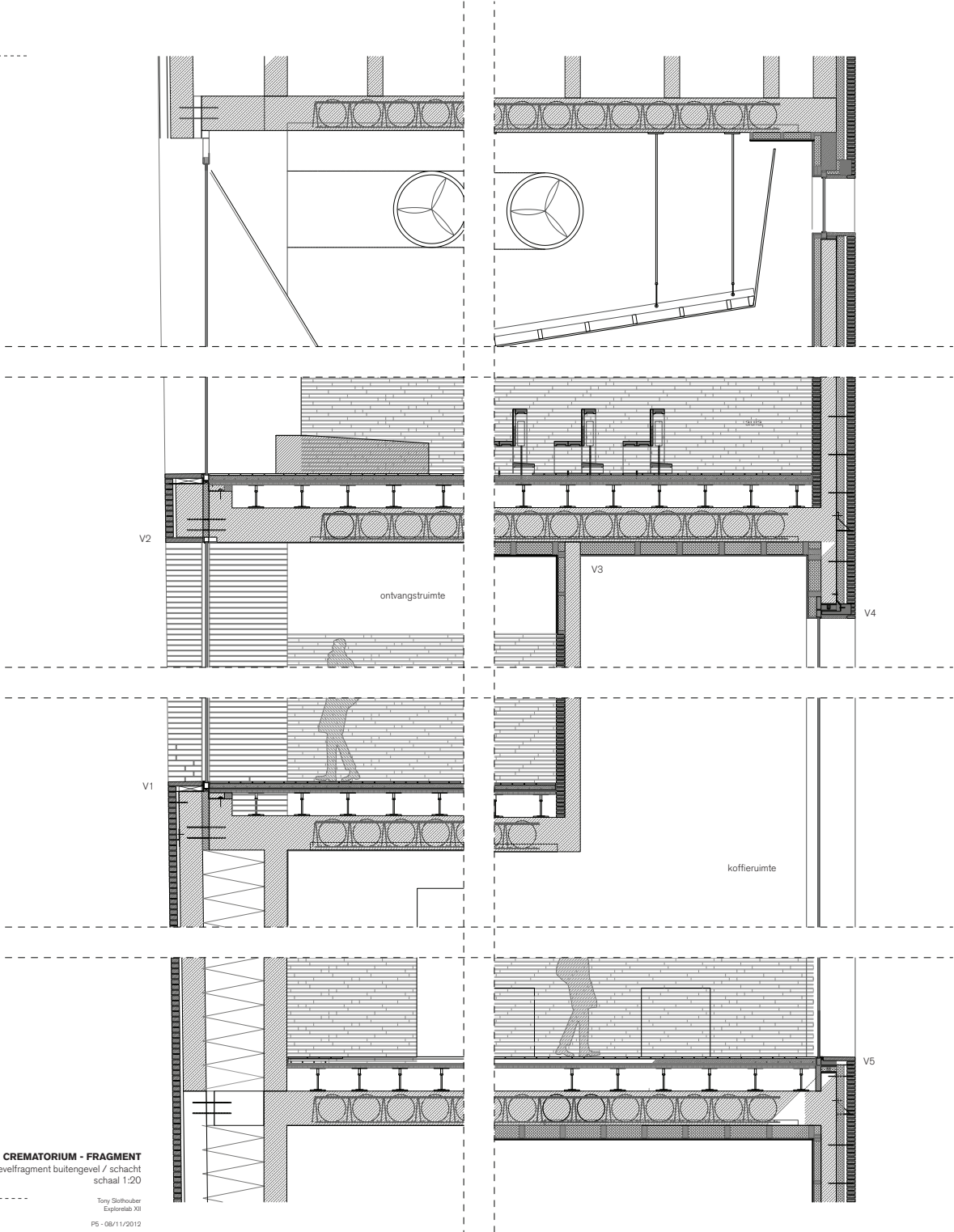




STENEN HOOFD

crematorium fragment

scale 1:20



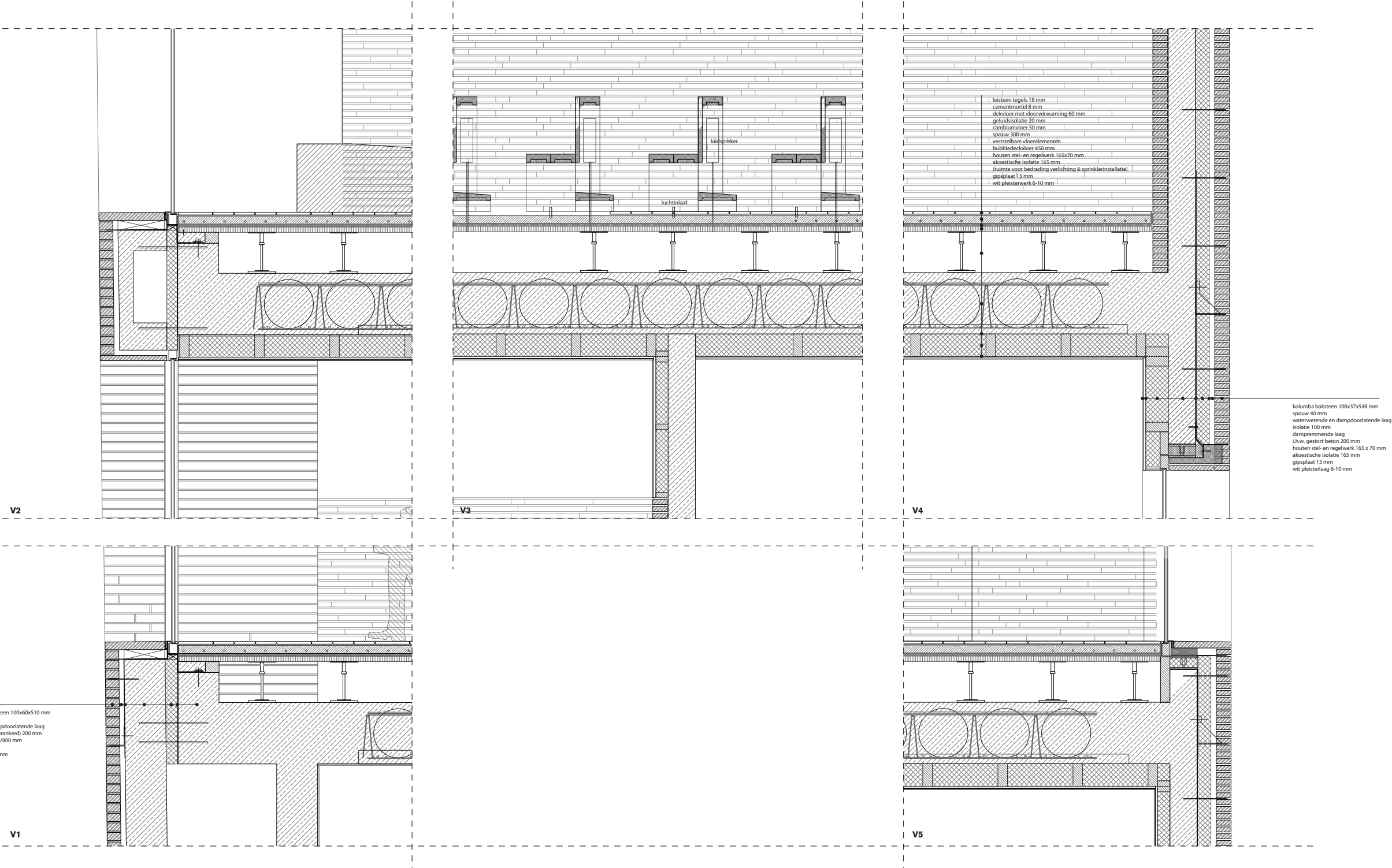
CREMATORIUM - FRAGMENT  
gevelfragment buitengevel / schacht  
schaal 1:20

Tony Slothouber  
Explorlab XII  
P5 - 08/11/2012

STENEN HOOFD

fragment details

scale 1:10





# STENEN HOOFD

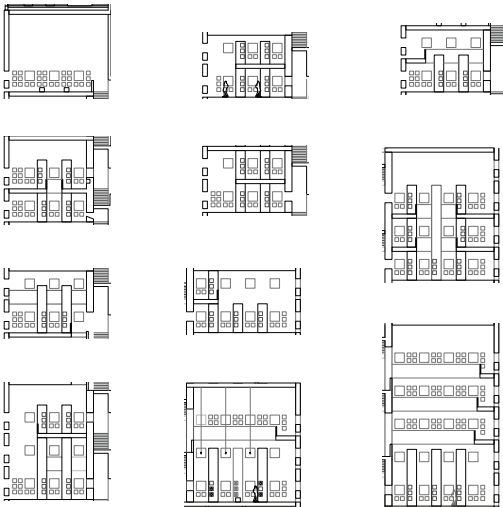
## columbarium

The columbarium, located in between the entrance and the crematorium, is the place for remembrance. Here, friends and family can return to pay their respect to the ones they love. As each person is different from another, every urn memorial place has been given an own identity, within the same language.

Urns have their own space within the unifying whole. They can be placed in one of the memorial stones, focused at the middle of the interior, or in the wall, in between the openings through wich concentrated pen-etrates the building.

As the inlets of light are thoroughly open, wind and rain pervades the interior, giving it an exterior feeling. Birds can fly through and materials age with the passing of time.

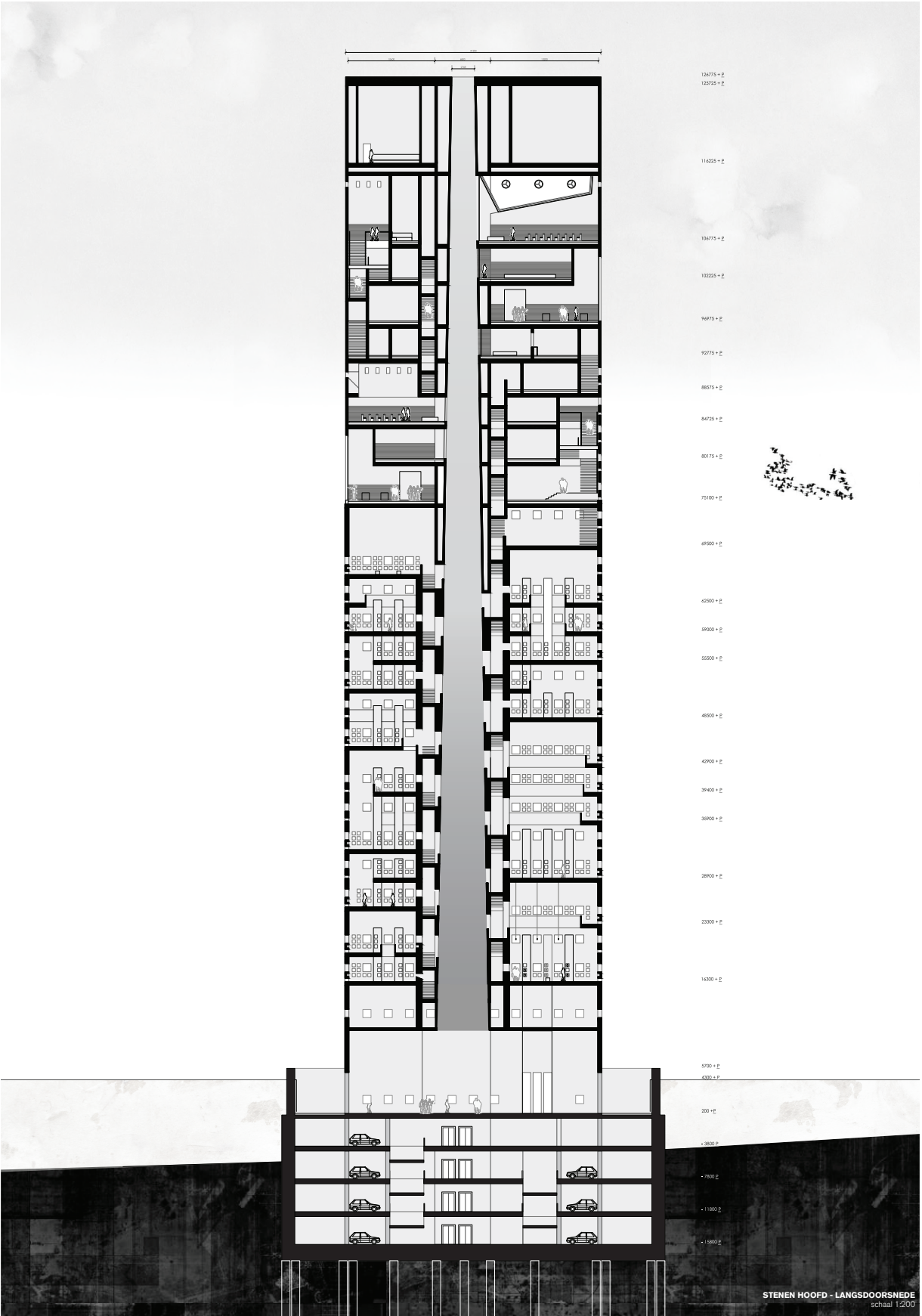
- 21. various identities of urn memorial places
- 22. interior of urn memorial place; the spaces are open.
- 23. longitudinal section



21



22



23





24. view from the city





25. ovens; view to the city