

An aerial photograph of a city, likely Amsterdam, showing a dense urban landscape with various buildings, green spaces, and a large railway corridor. A semi-transparent white rectangular box is overlaid on the left side of the image, containing text. The background shows a mix of modern and older architecture, with a prominent railway line and several green fields in the foreground and middle ground.

Tussen de bedrijven door

connecting CBD Zuidas

P5 presentation
Jaap de Jong
4108752

STRUCTURE

CBD Zuidas

research
problem
goals

program

what why

urban design

building design

cinema
bowling
student housing

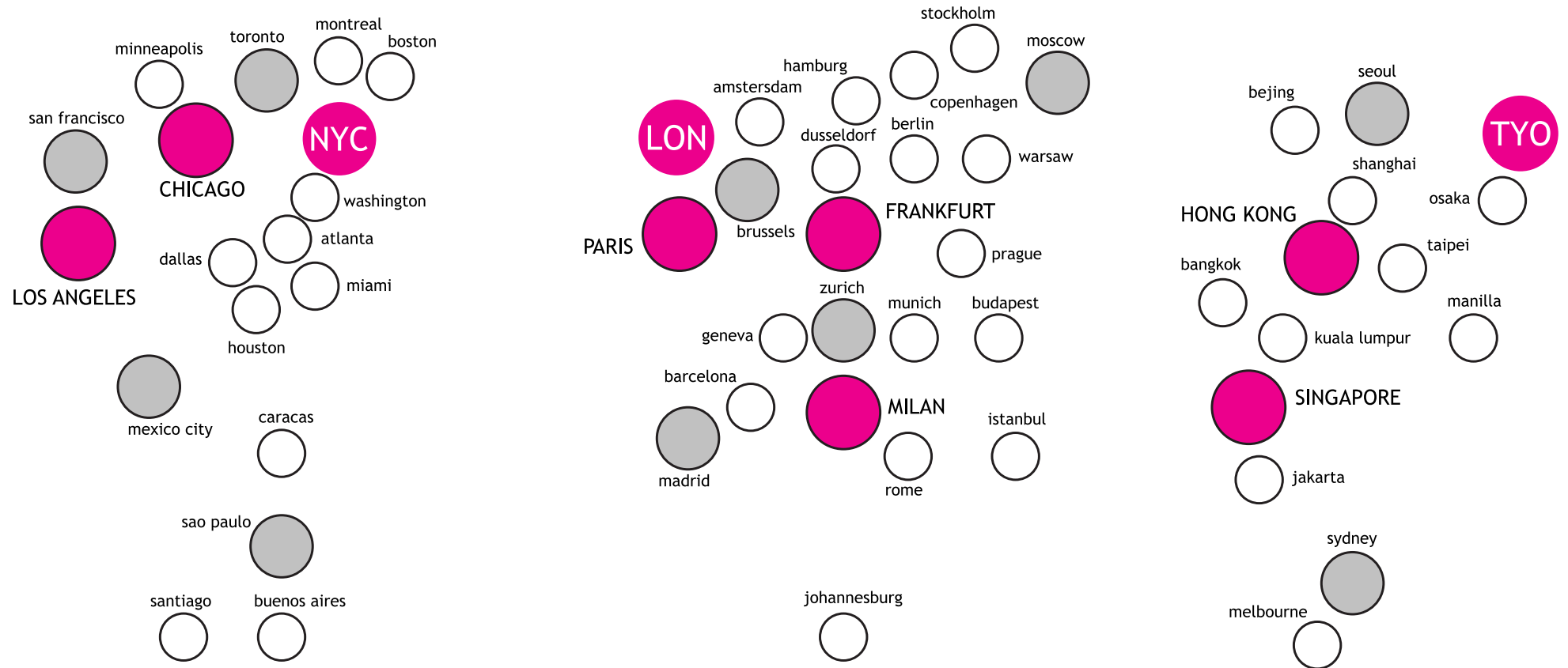
building technology

conclusion

A low-angle, upward-looking photograph of a modern skyscraper. The building is constructed from reddish-brown bricks and features a grid of windows. The perspective creates a strong sense of height and scale, with the building's edges converging towards the top of the frame. The sky is a clear, pale blue. The text 'CBD Zuidas' is overlaid in the lower-left quadrant.

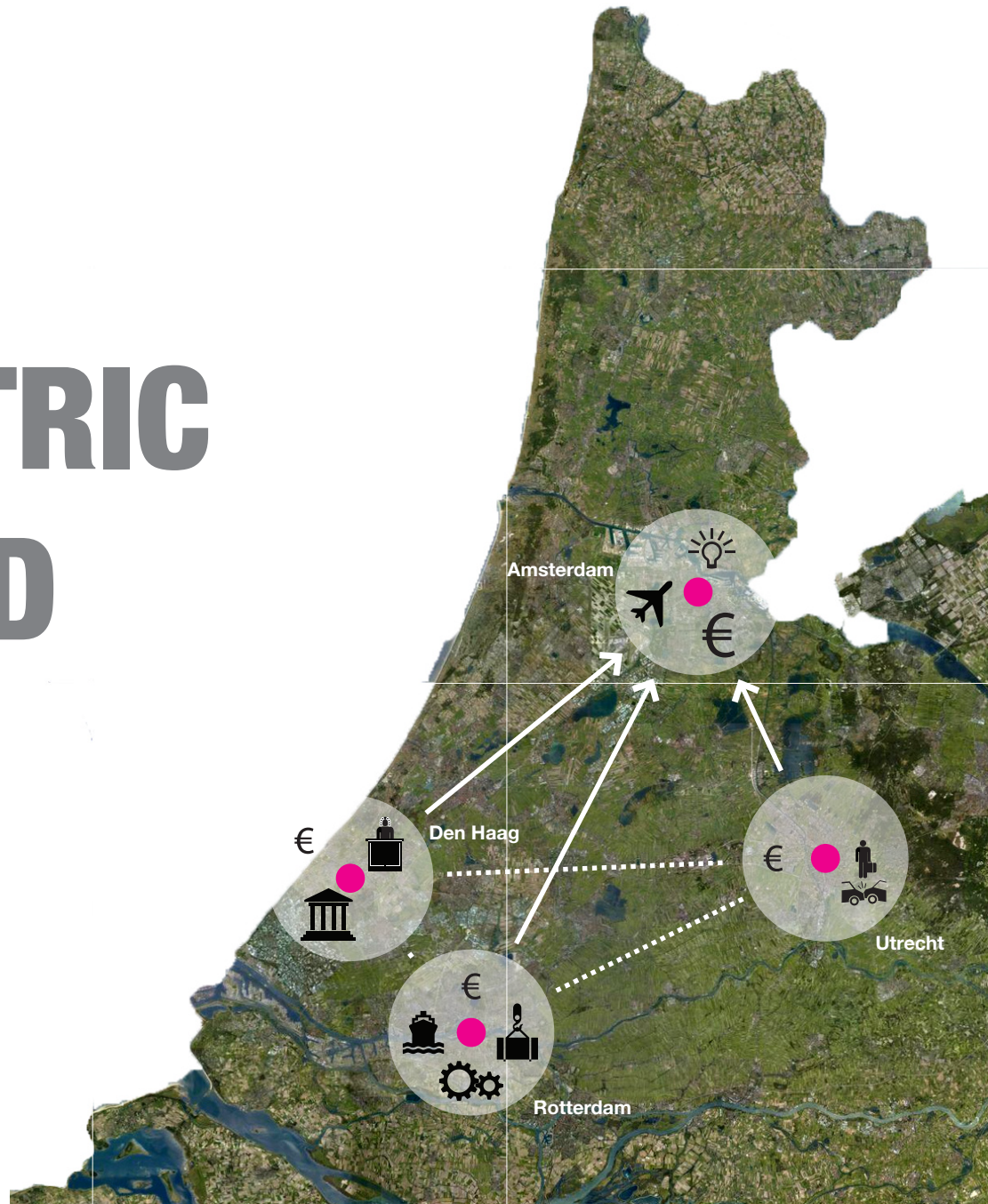
CBD Zuidas

GLOBAL NETWORK



Schematic geography that depicts a world with no boundaries. Cities have been identified on the basis of their **provision of advanced producer services**, they are ordered by three levels of importance. (Beaverstock, Smith and Taylor, 1999)

POLYCENTRIC RANDSTAD



CBD Zuidas

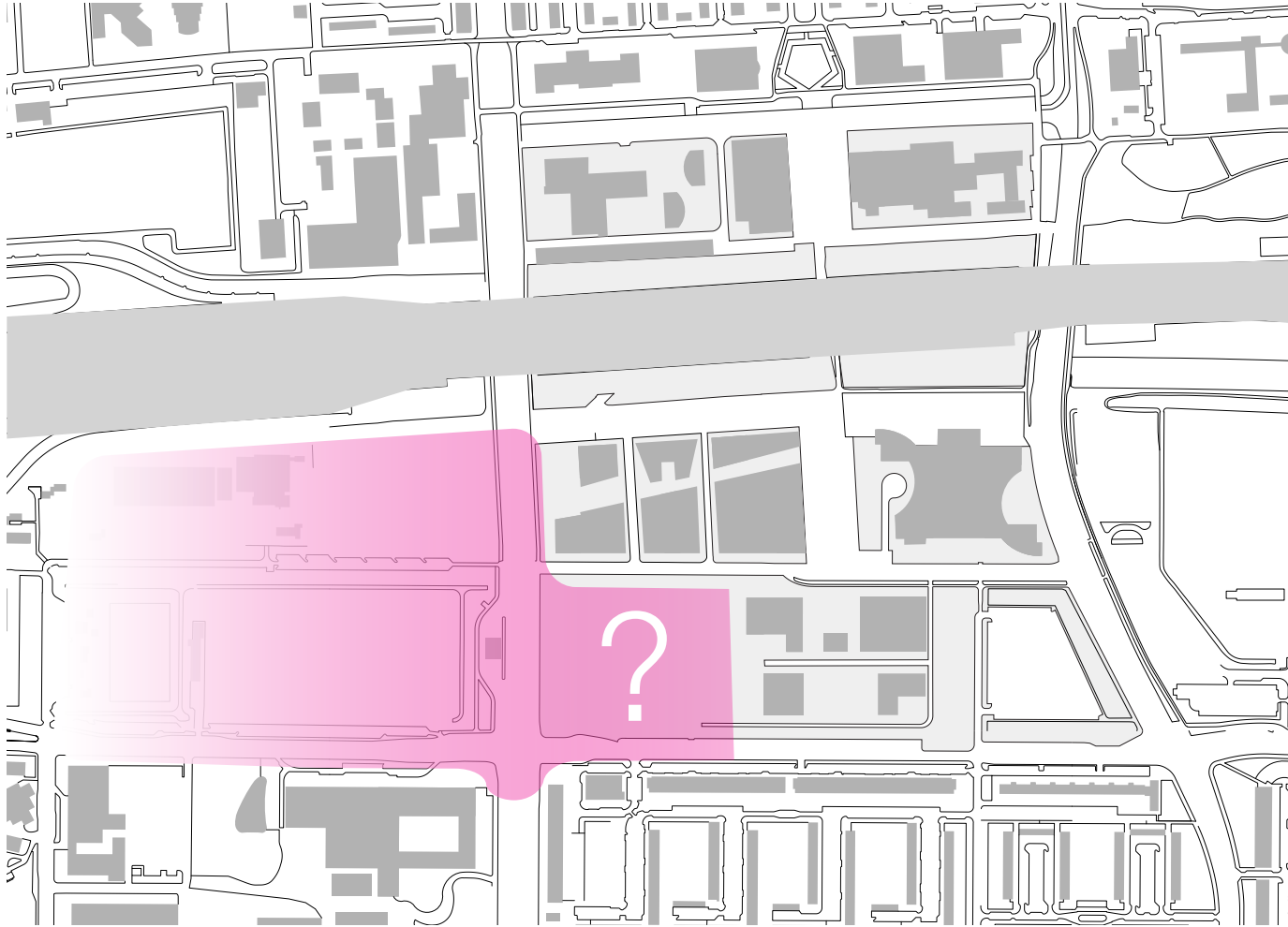


2nd city centre

unfinished



undefined



unclear territory

PROBLEM STATEMENT

INCOMPLETE

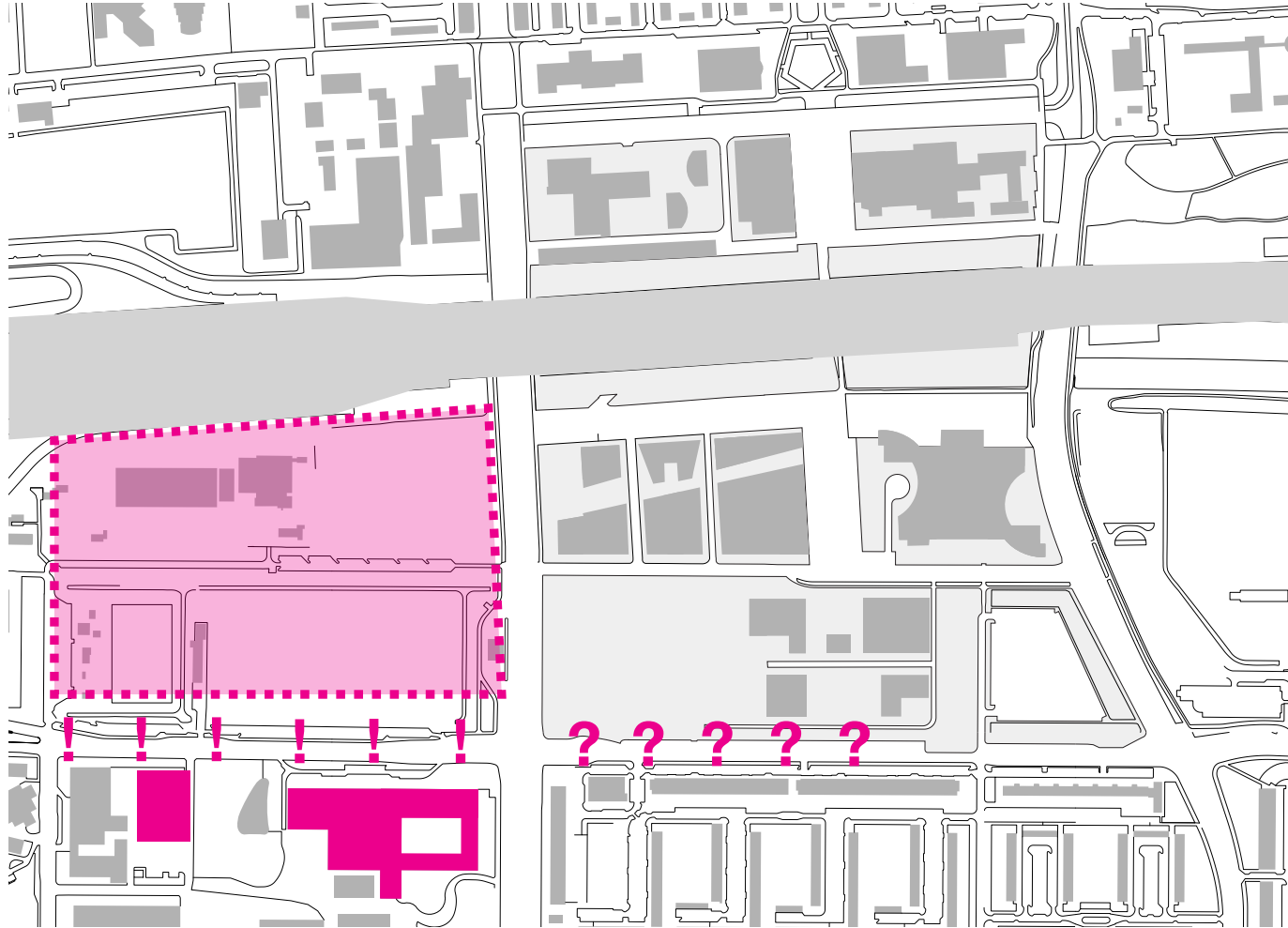
suggesting insufficient of economic activity/gravity
present at edges; unclear territory in the city

LACK OF PROGRAMMATIC RELEVANCE

no programmatic value for the local

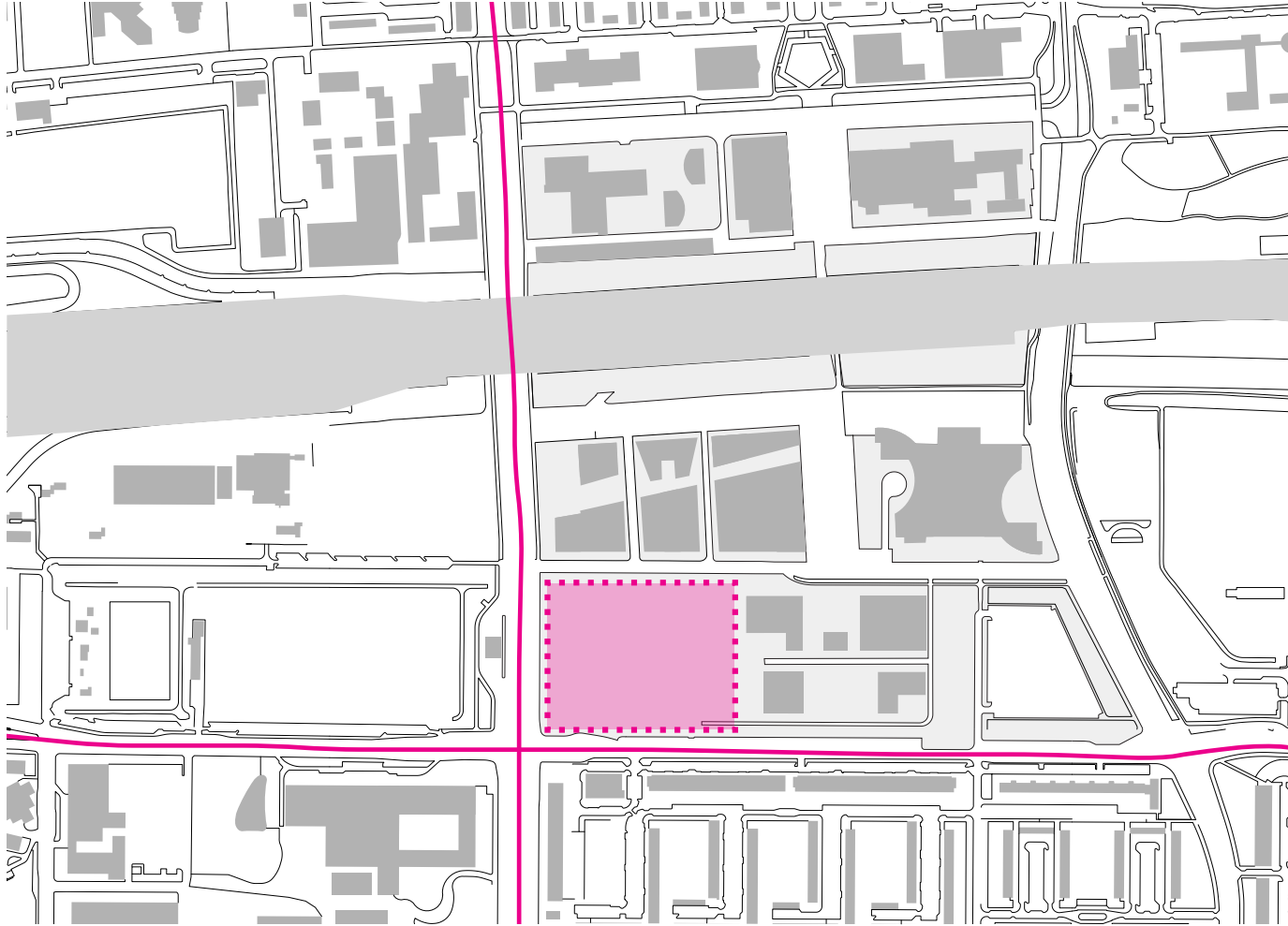
NOT LIVELY

opportunity



development VU campus

LOCATION



GOALS AND INTENSIONS

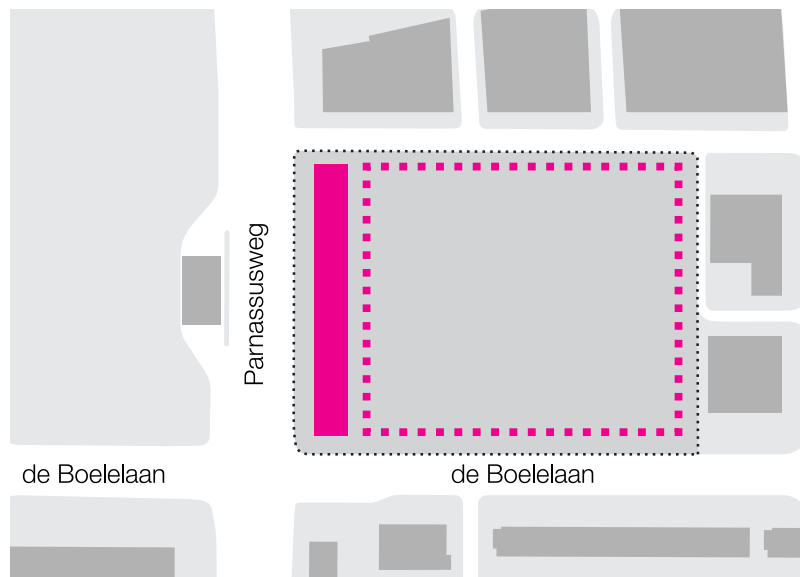
- complete CBD Zuidas
 - economic appeal
 - clarity of territory for the city
 - define empty space

- programmatic relevance
 - value for the local
 - value for CBD

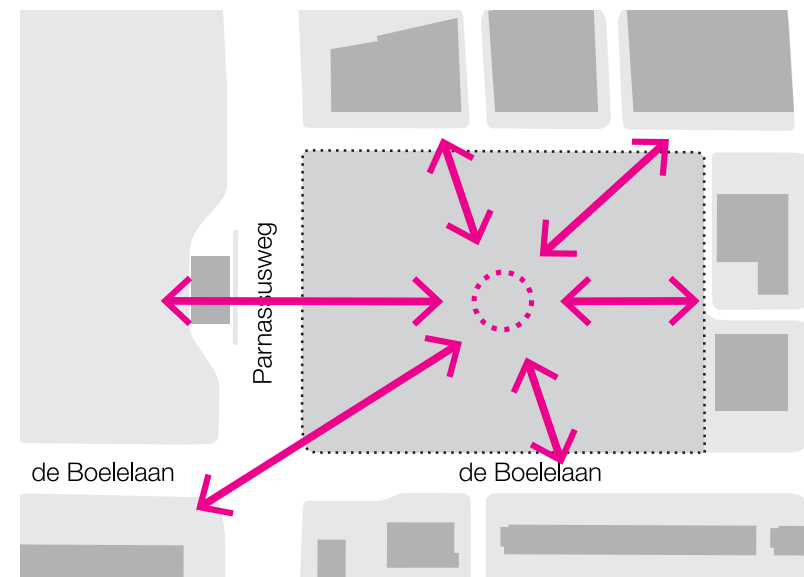
LIVELINESS!

- evoke mixed used activity for future development
 - set example to intervene for both CBD Zuidas and the local people

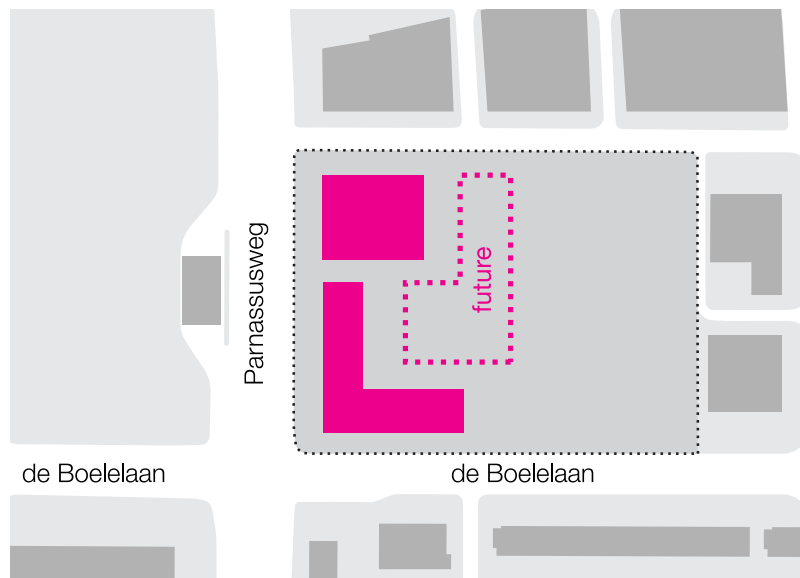
- mediate between CBD and local
 - scale
 - activity



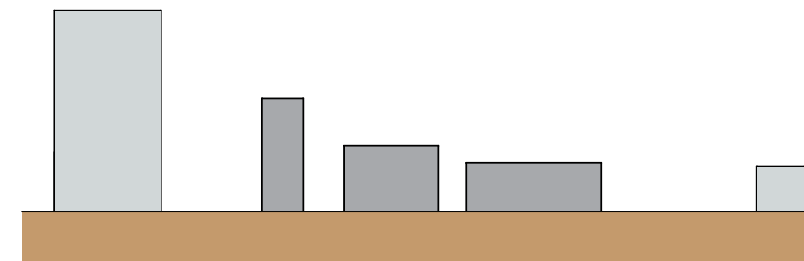
face to city/define space



programmatic value

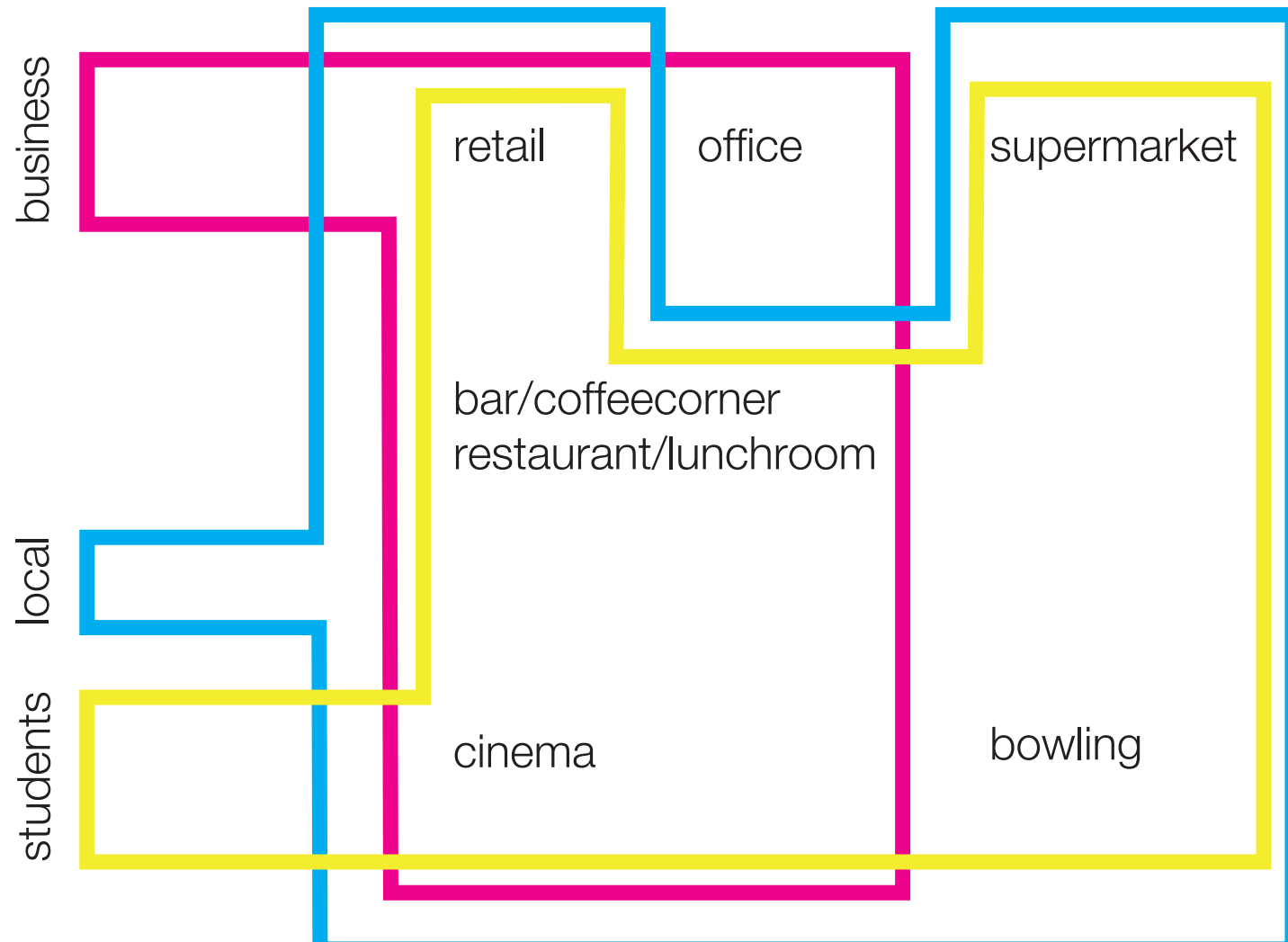


evoke reaction of future development



mediate in scale and height;
relate to both global and local

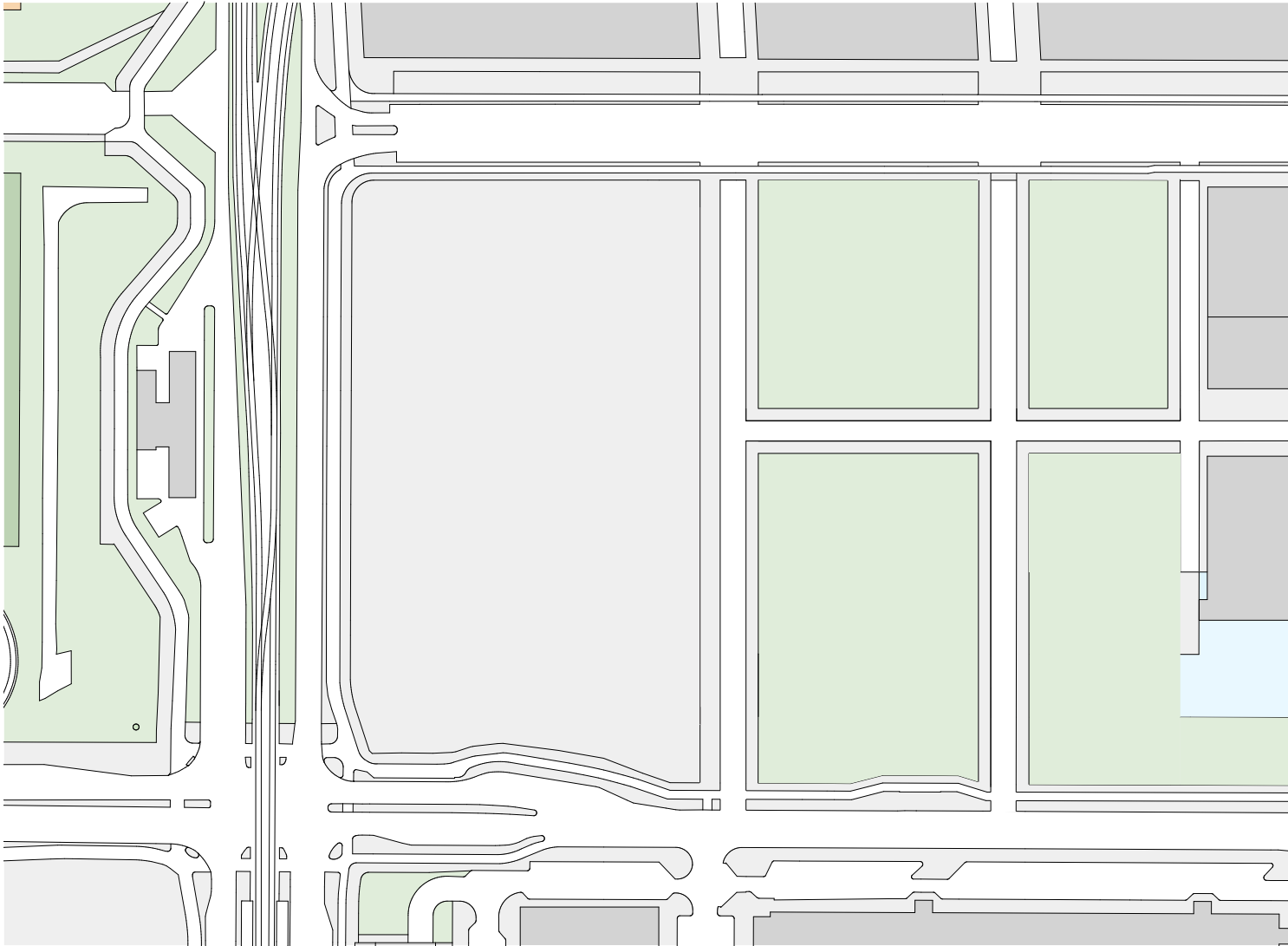
program



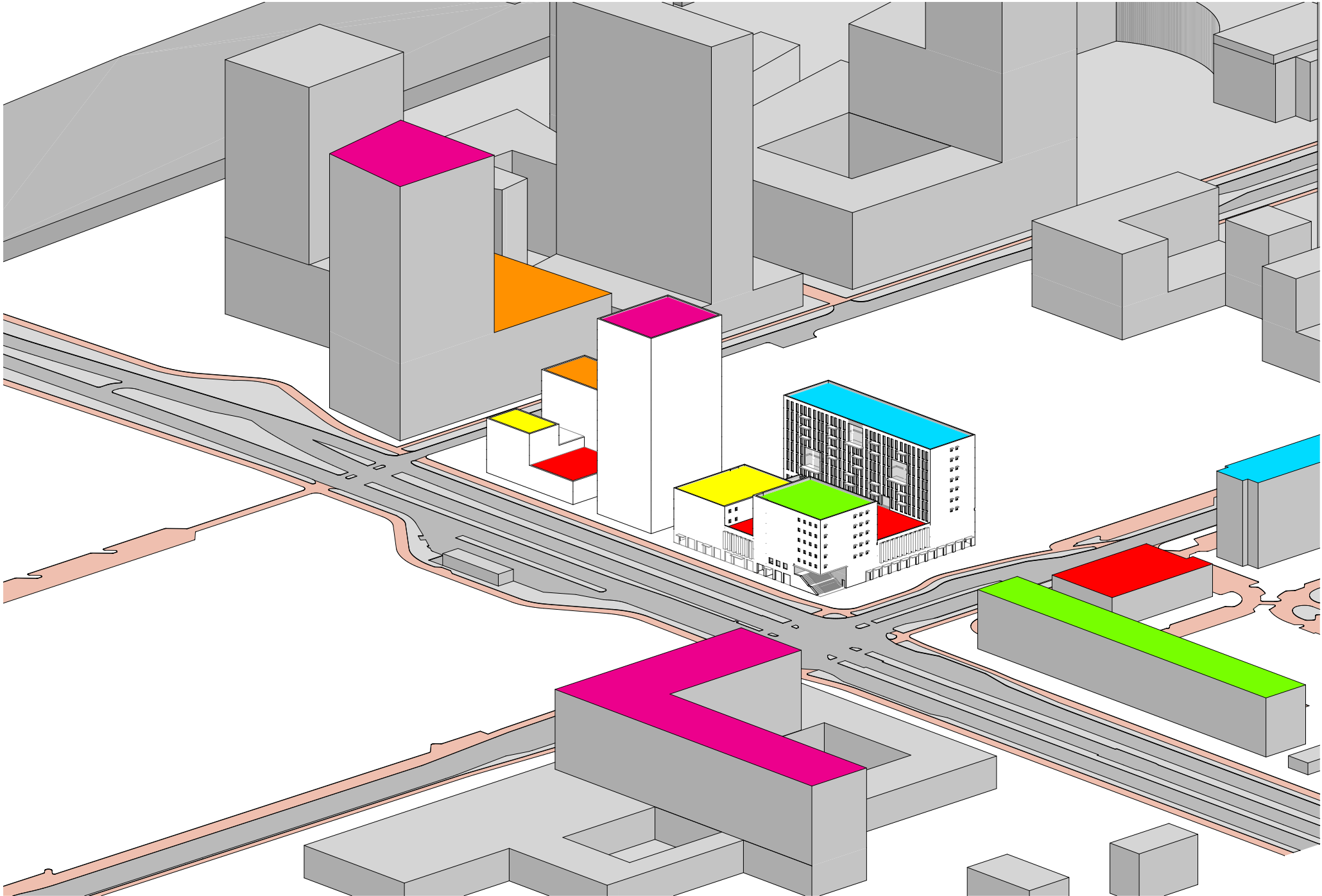


urban design

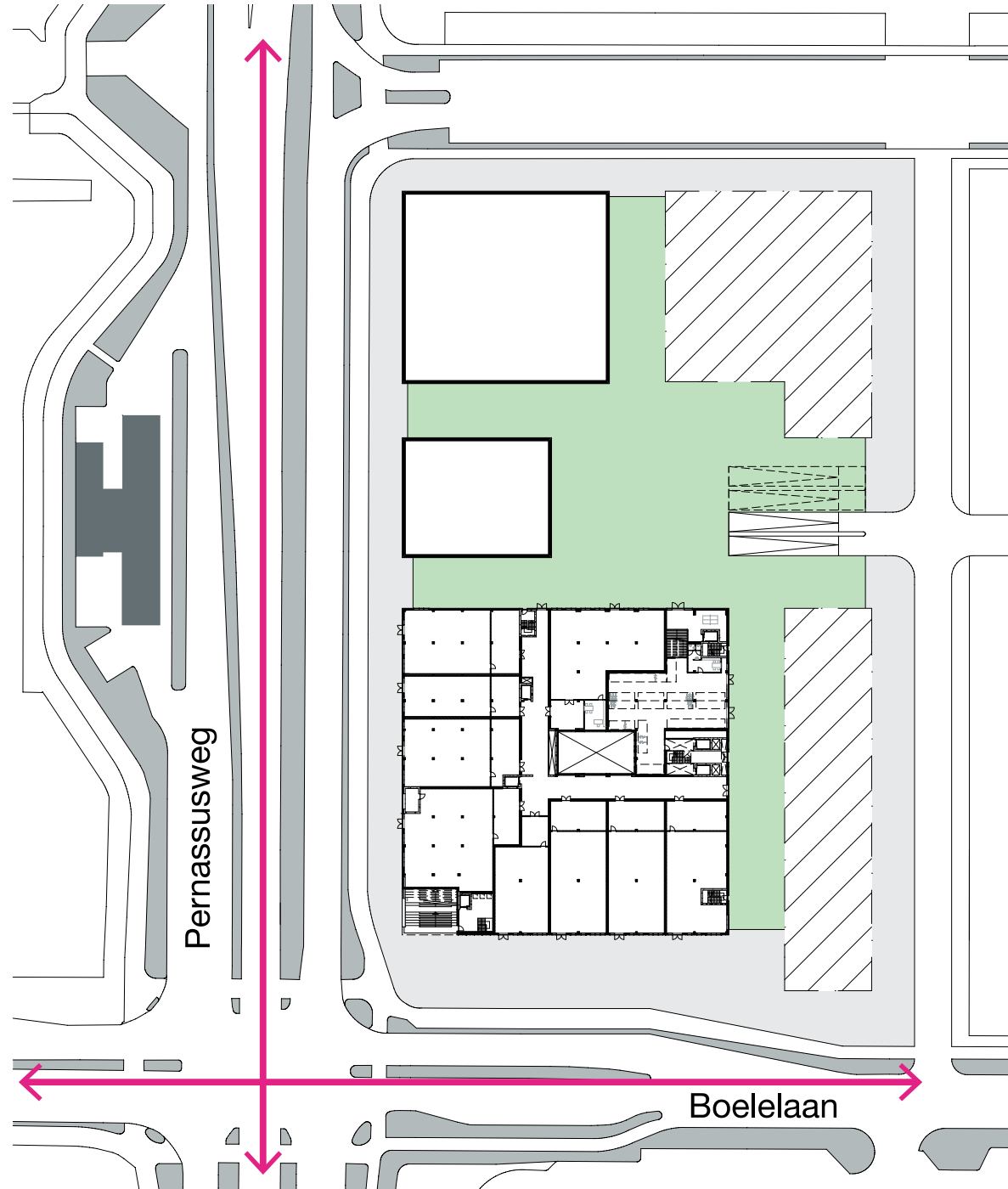
devide in generic plots







plot





building design

program

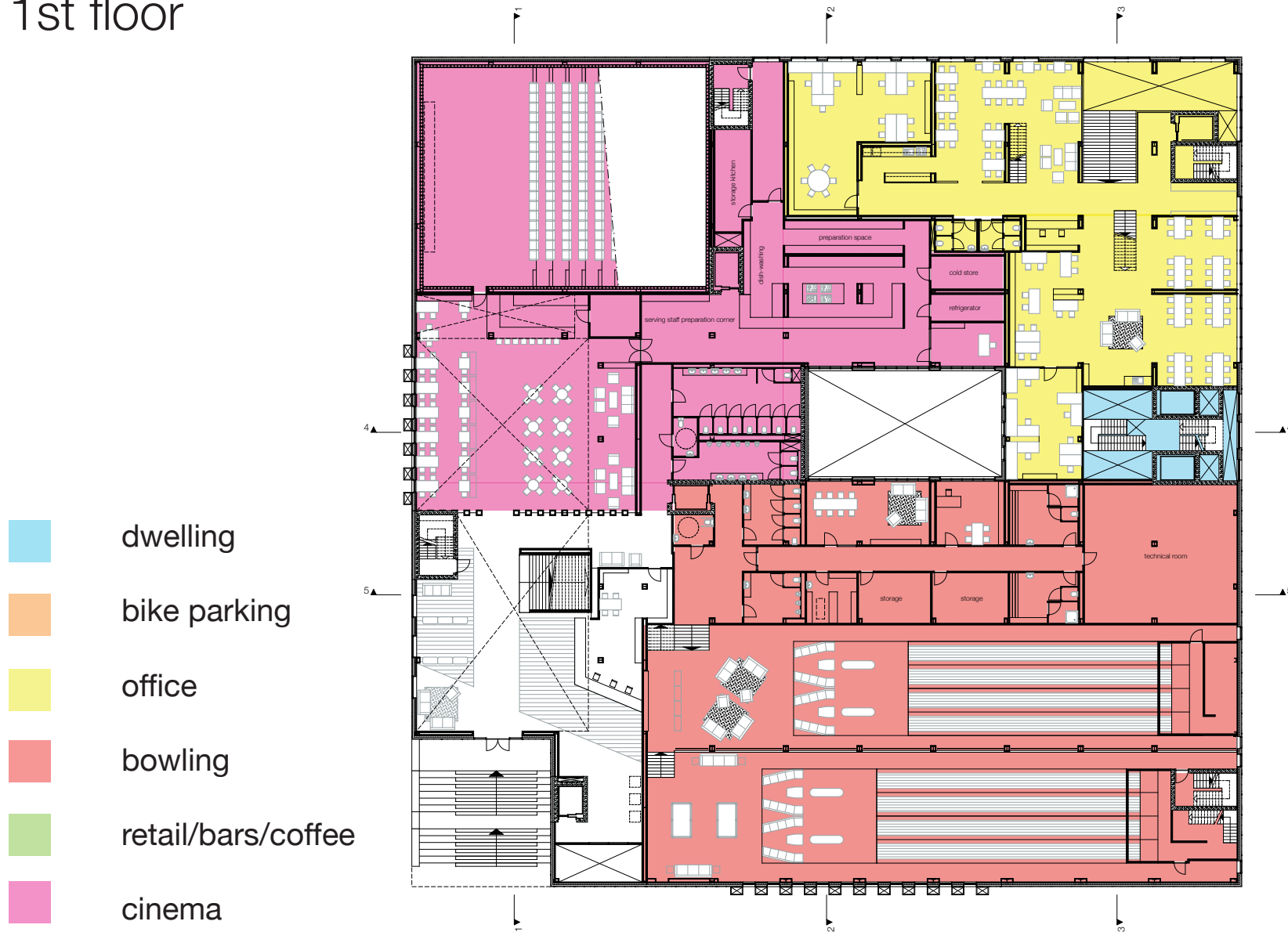
ground floor

- dwelling
- bike parking
- office
- bowling
- retail/bars/coffee
- cinema



program

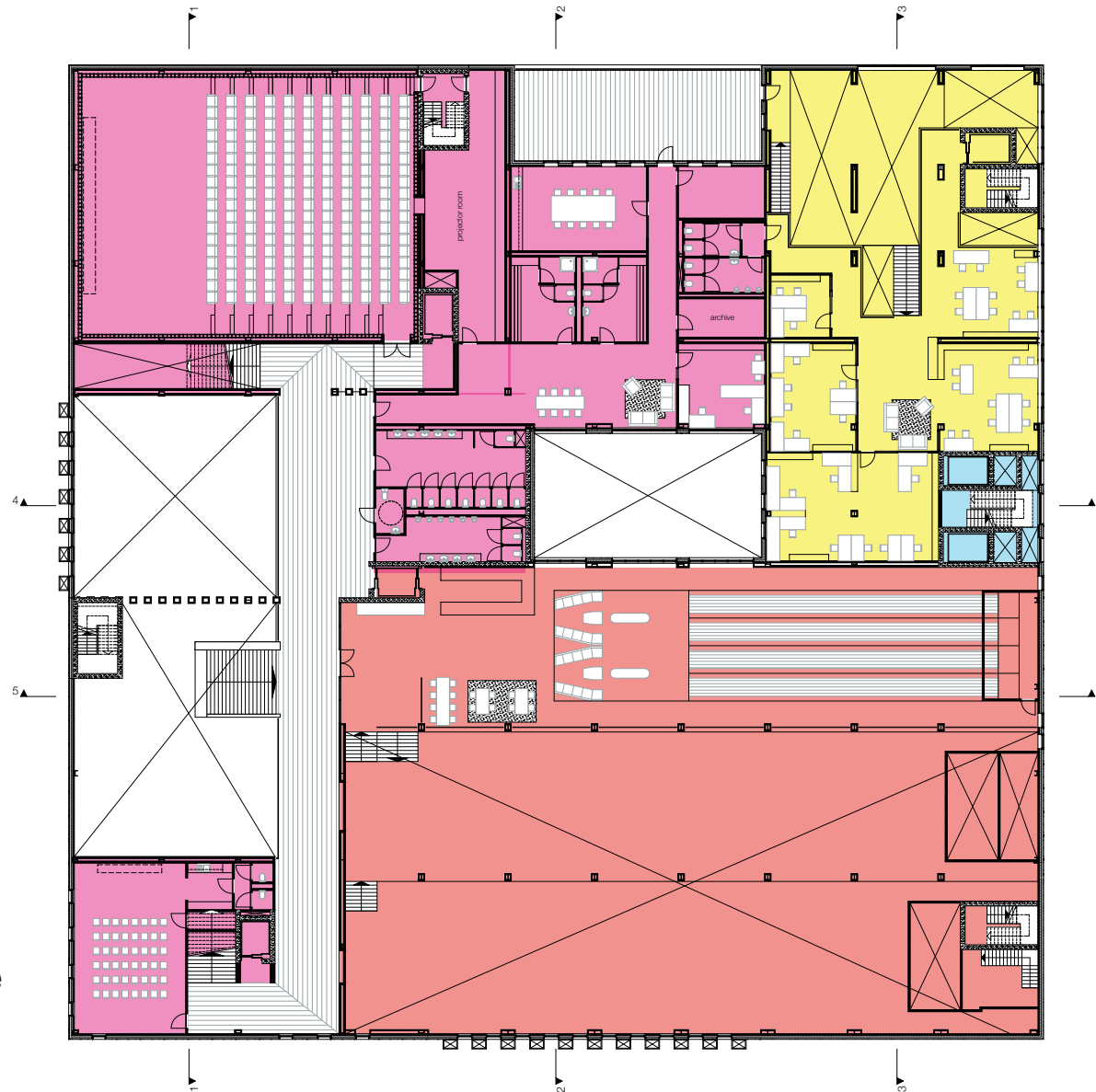
1st floor



program

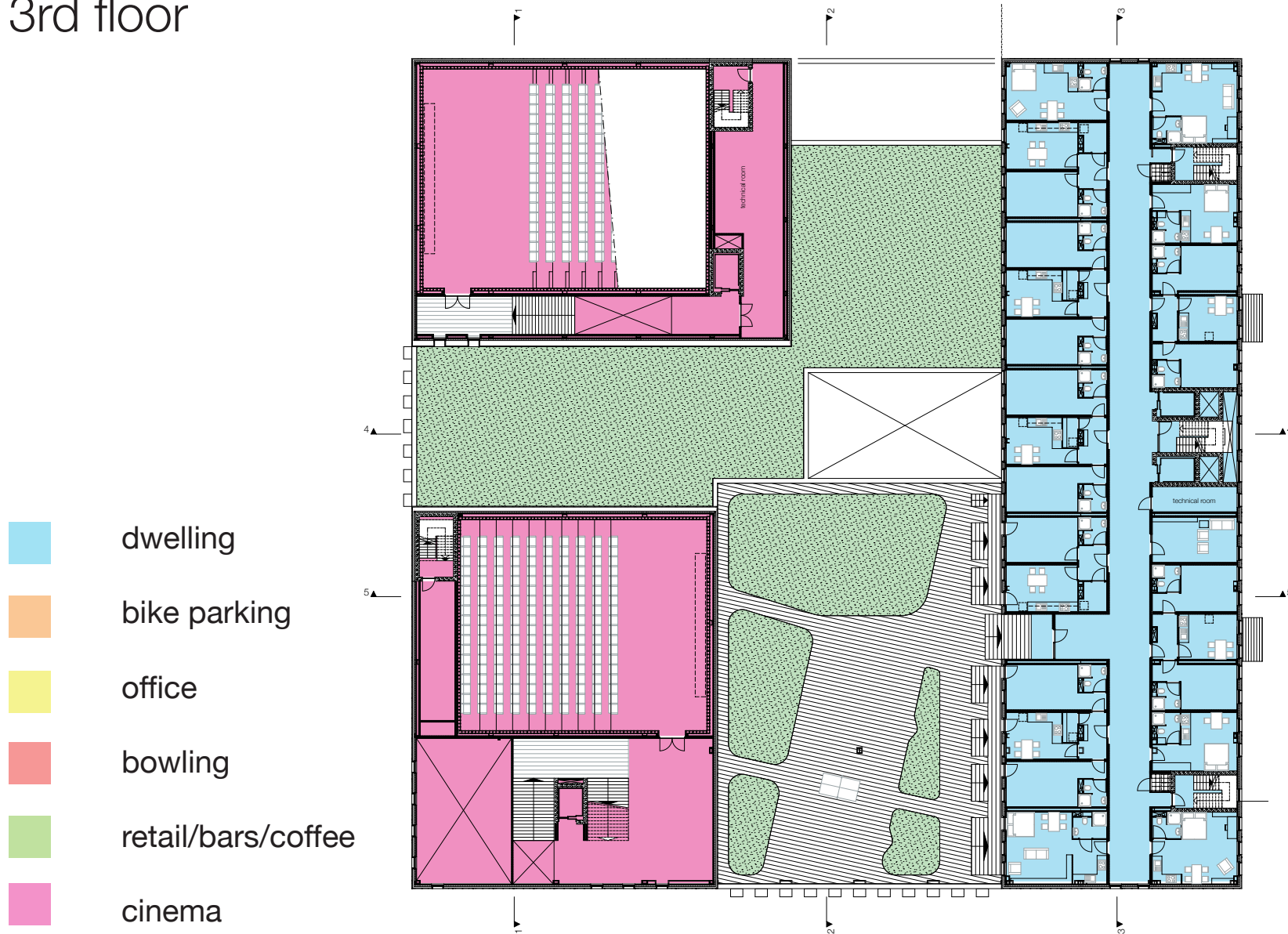
2nd floor

- dwelling
- bike parking
- office
- bowling
- retail/bars/coffee
- cinema



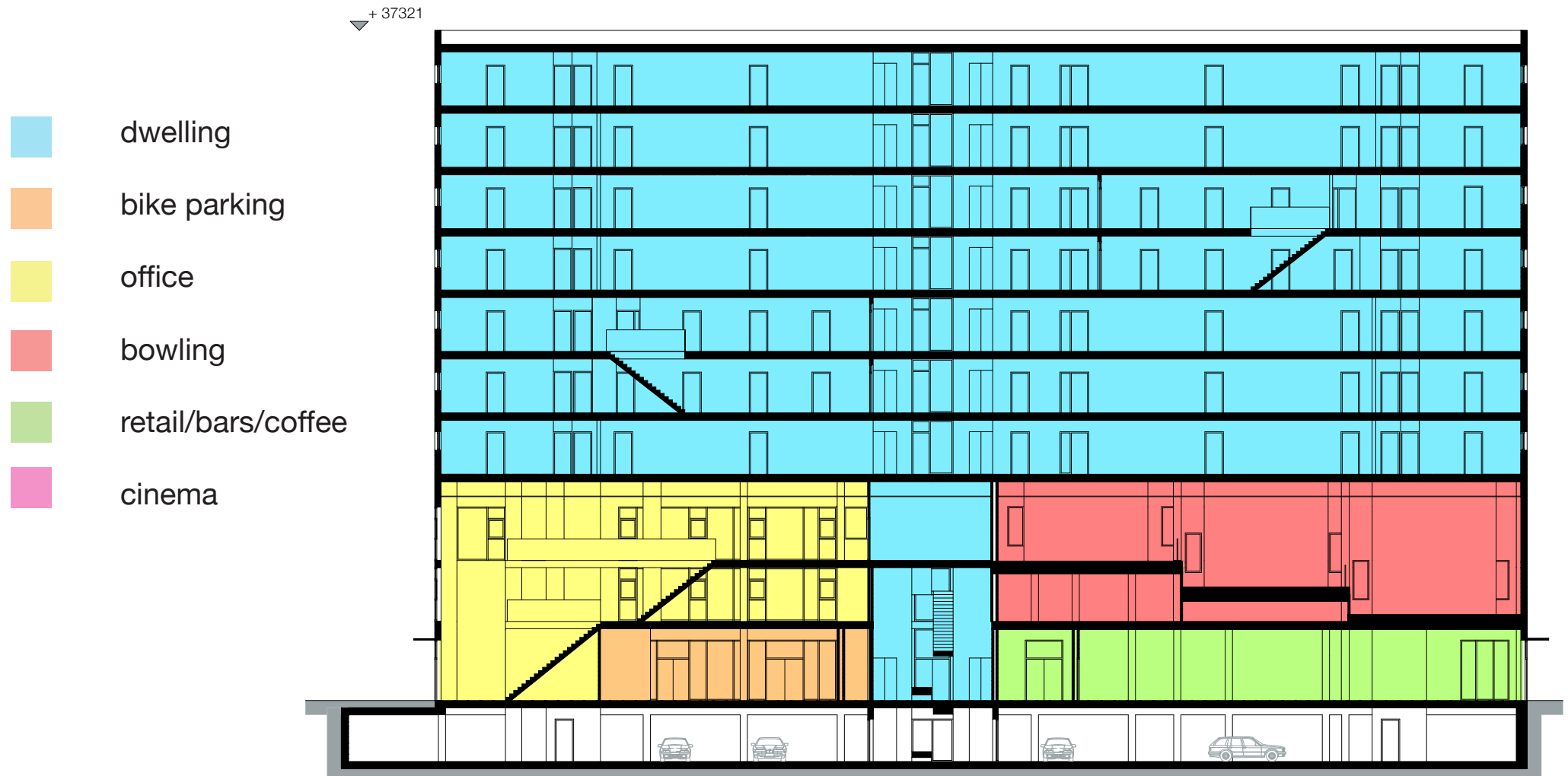
program

3rd floor



program

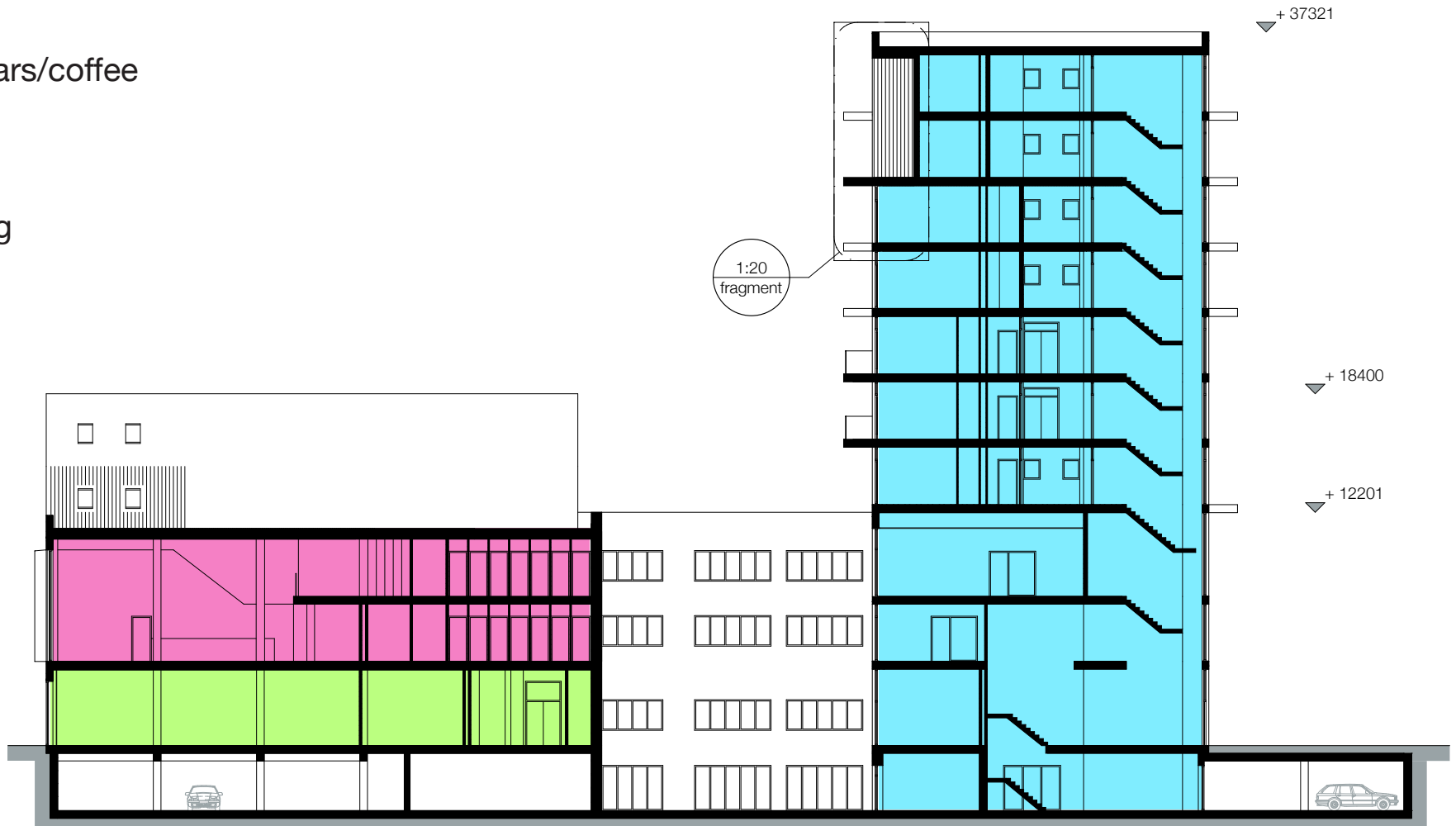
section 3

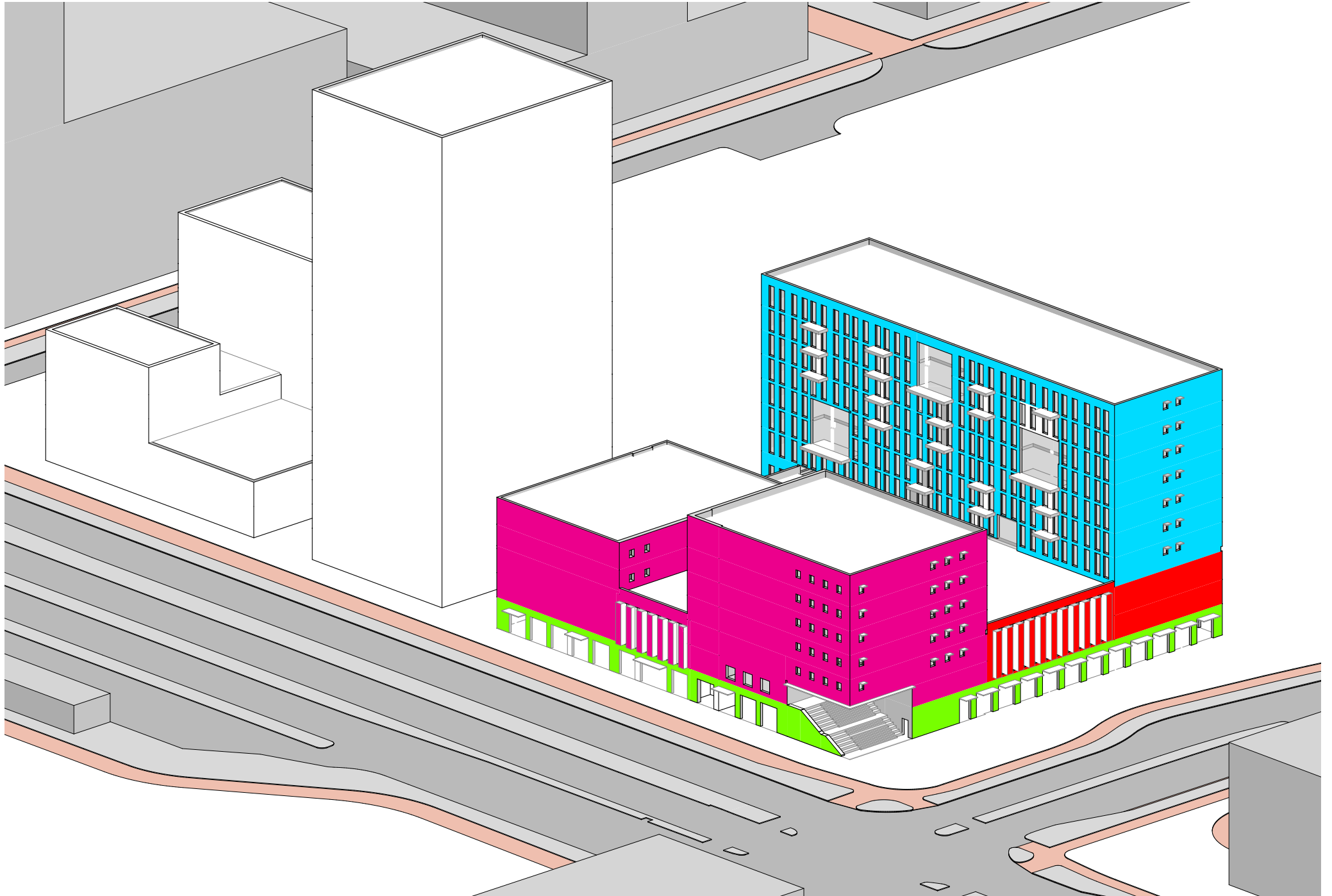


program

section 4

- retail/bars/coffee
- cinema
- dwelling





features

cinema

bowling

dwelling

lobby



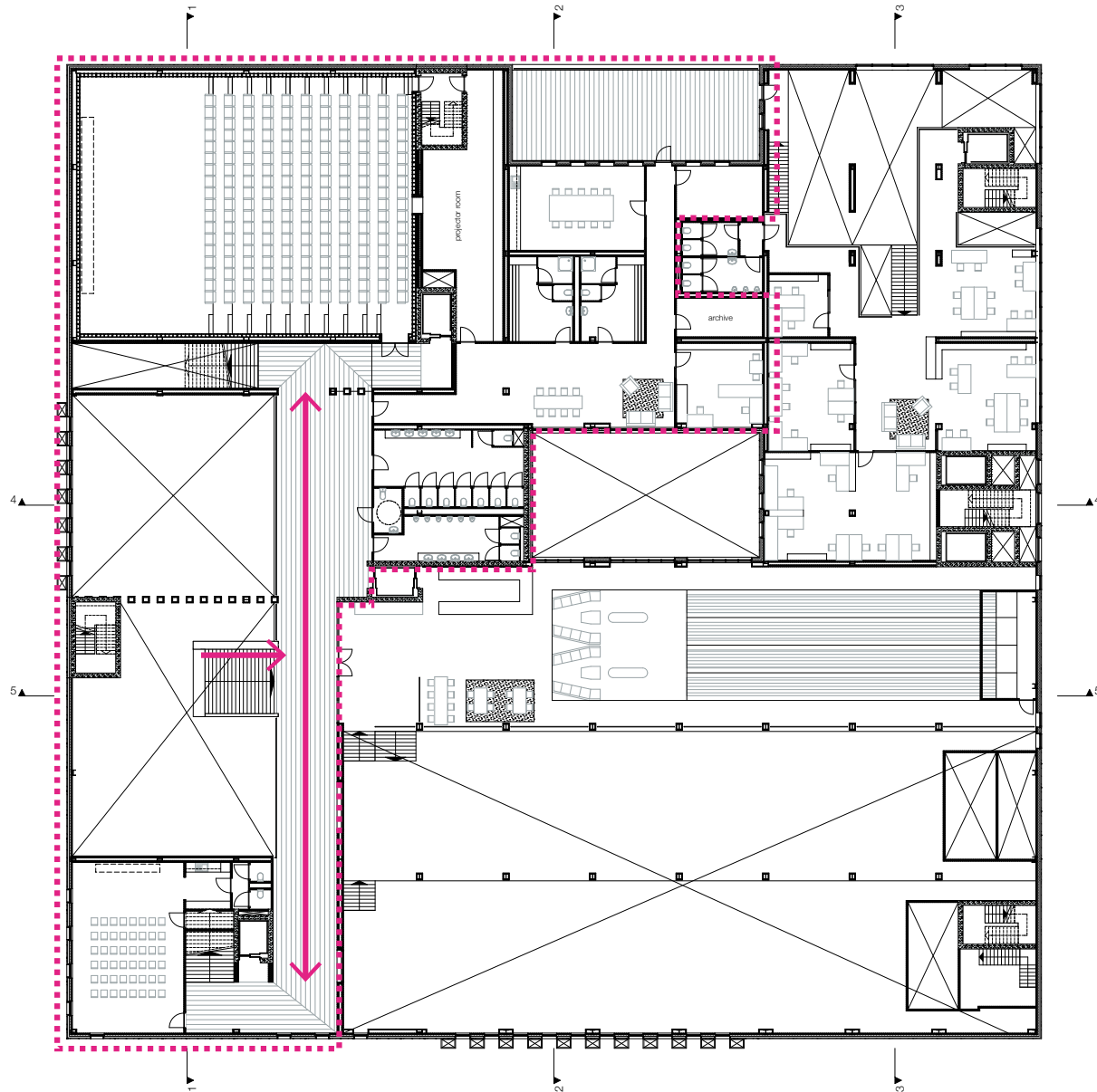
lobby

1st floor



cinema

2nd floor

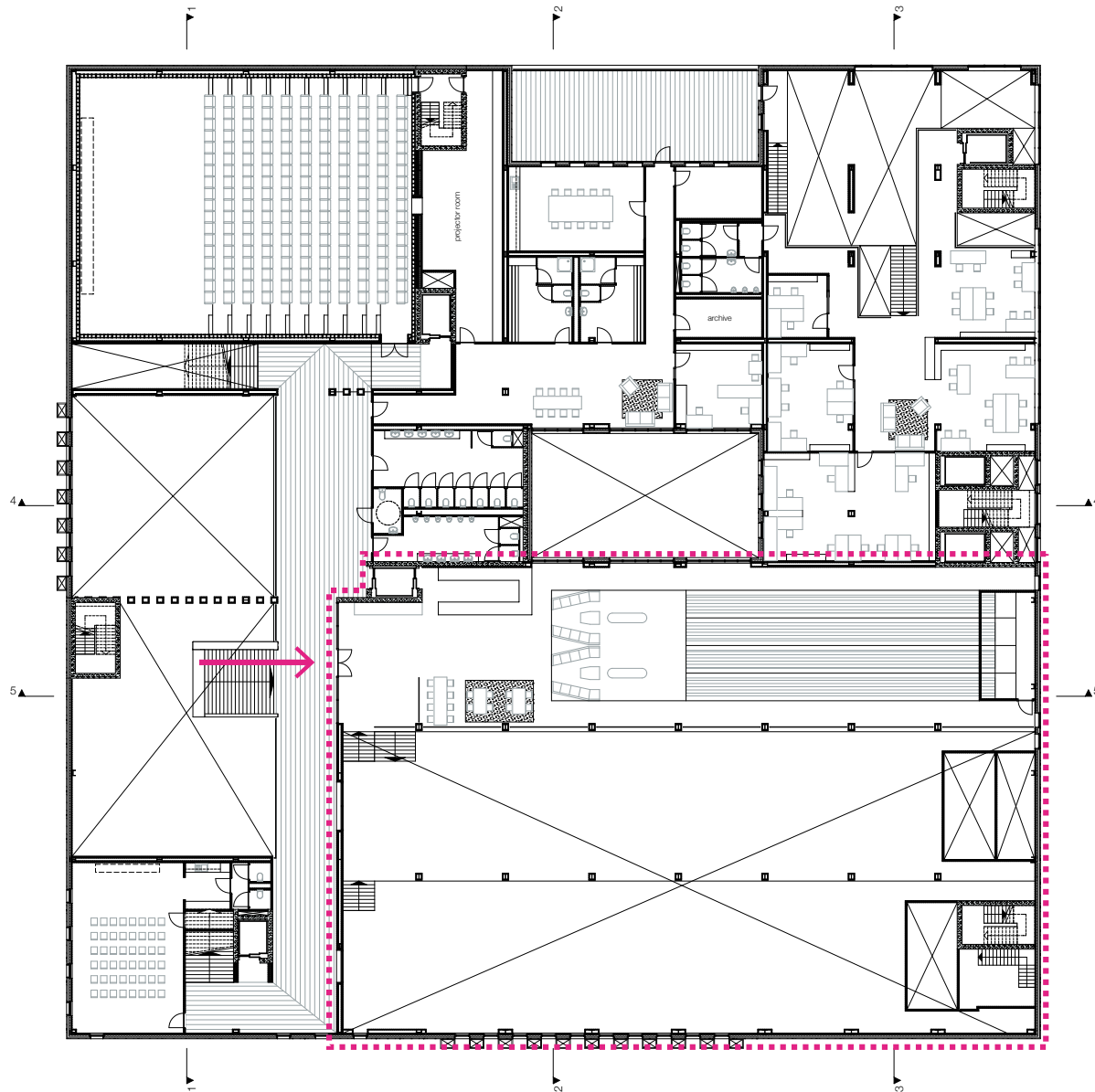


section 1 **cinema**



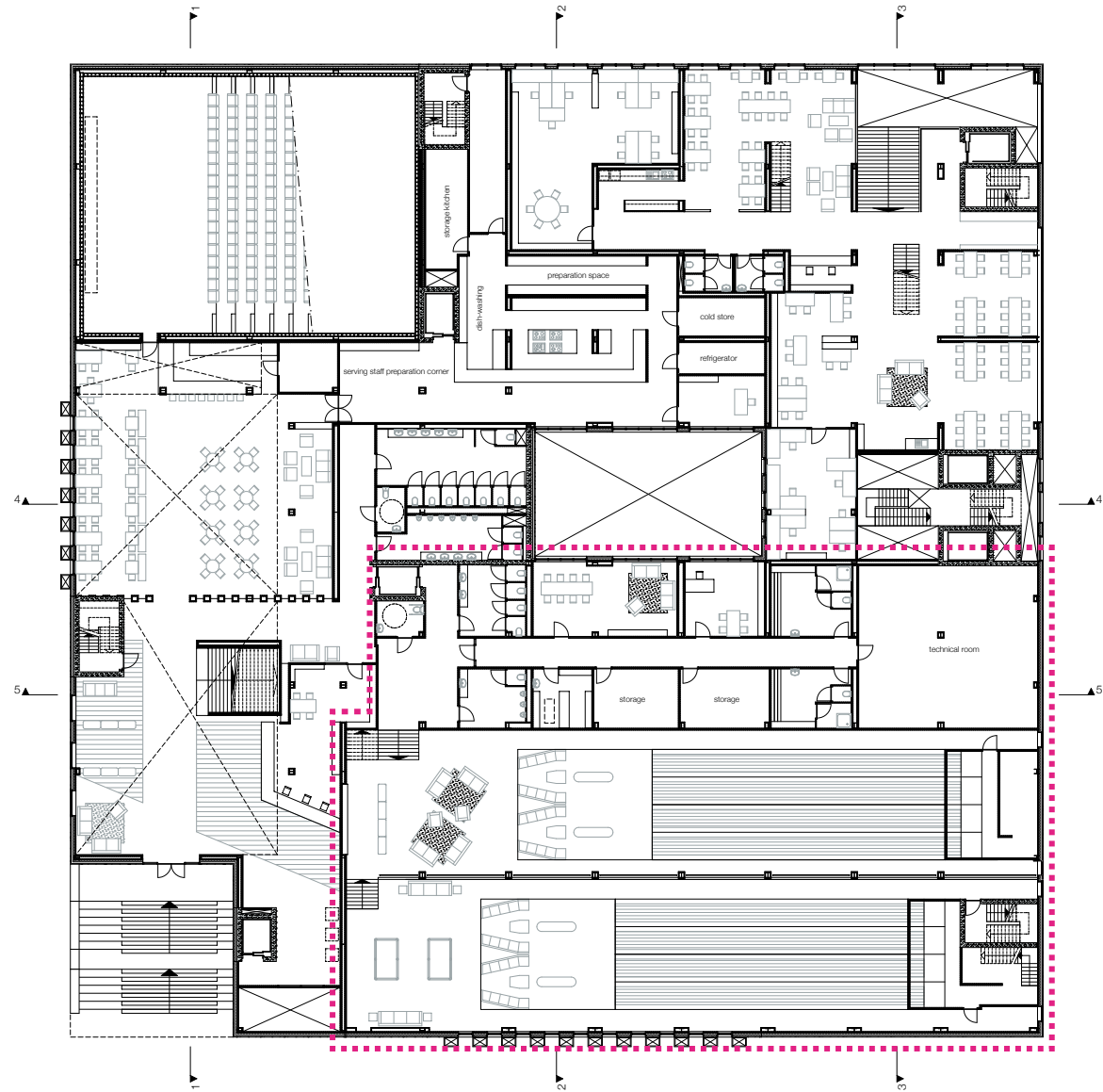
bowling

2nd floor



bowling

1st floor



section 2

bowling



STUDENT HOUSING

collectivity | community | sharing

privat bathrooms

shared laundry facility

different types:

- single; collective kitchen
- dual; kitchen + balcony for two
- studio; self supportive

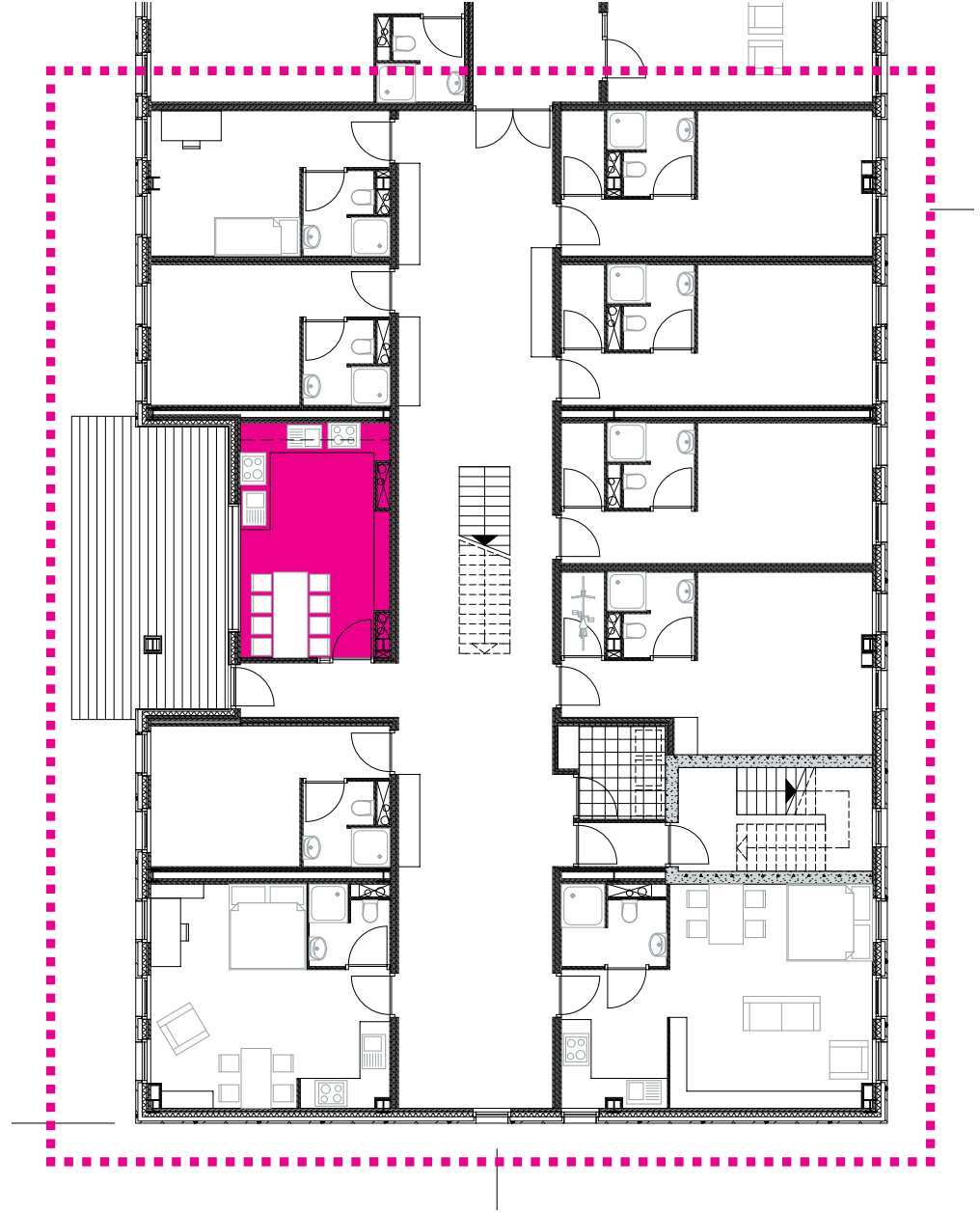
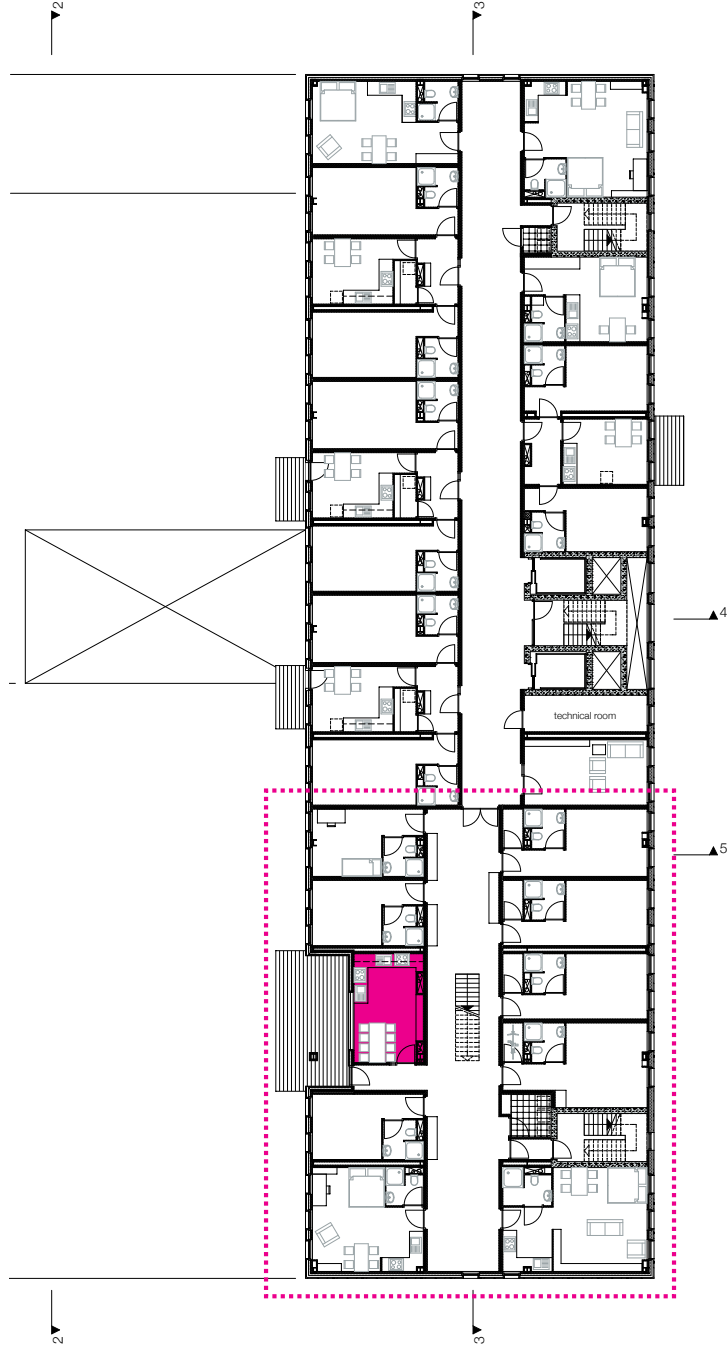
community

section 3

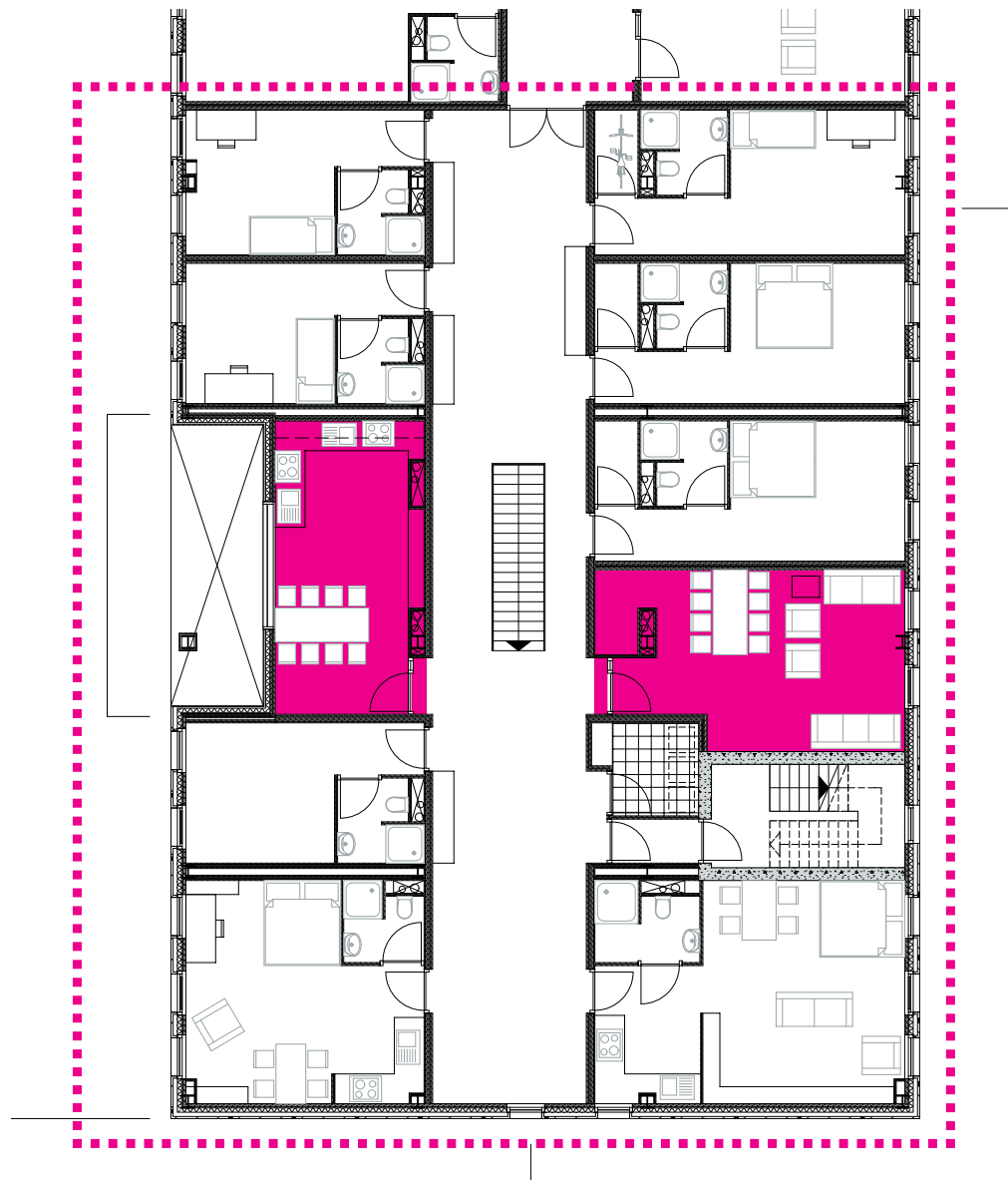
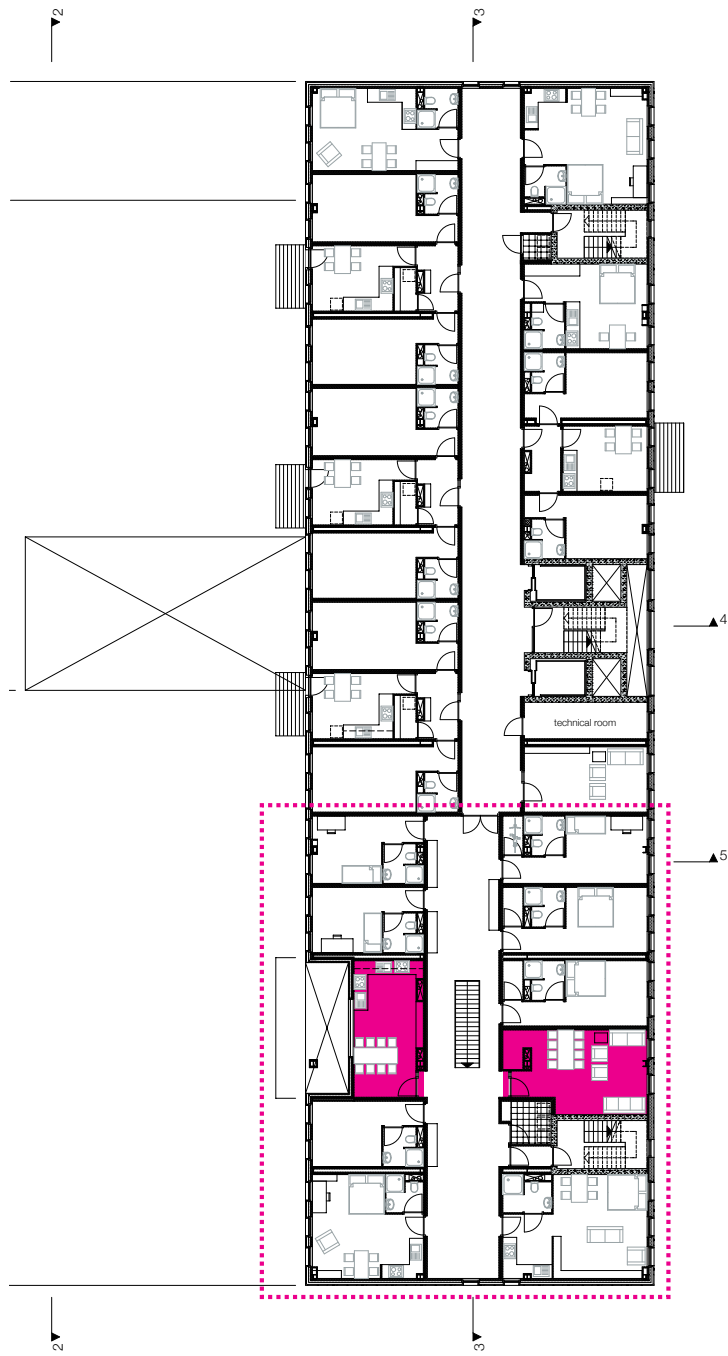
▼ + 37321



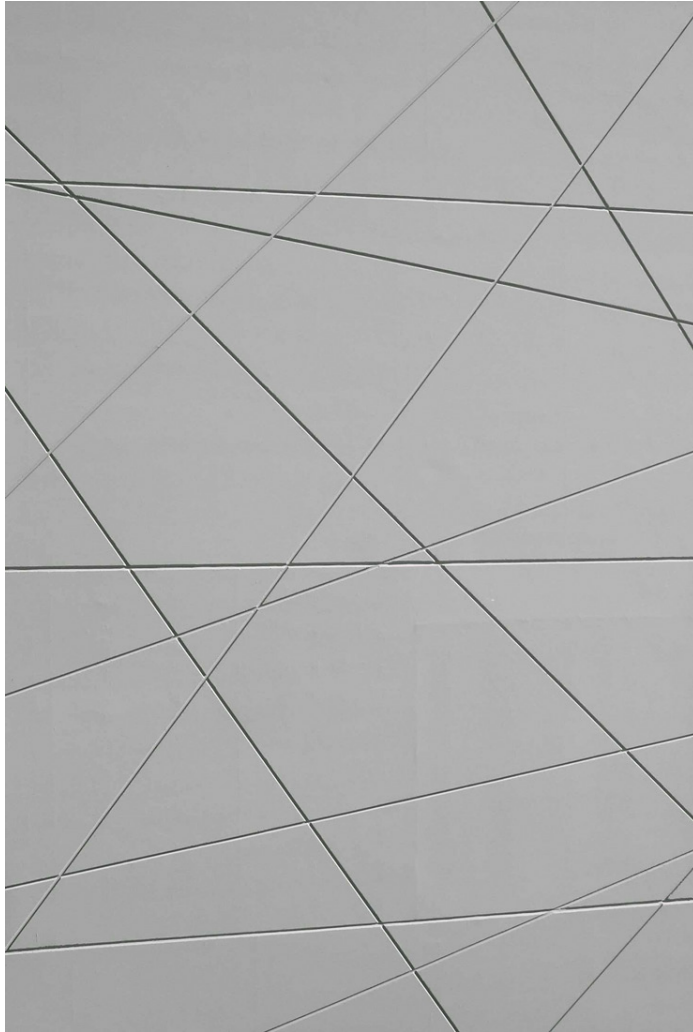
6th floor



7th floor



appearance



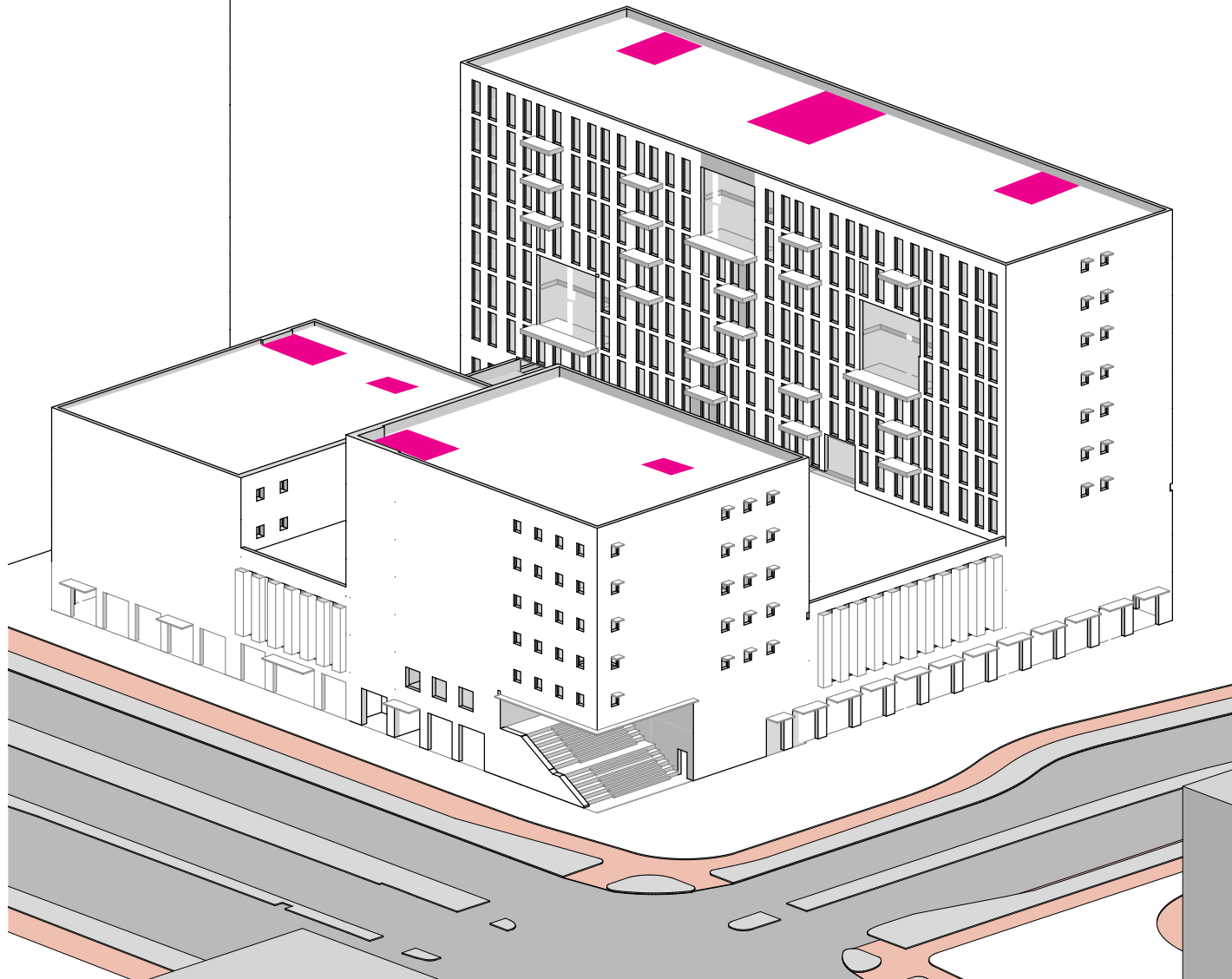


building technology

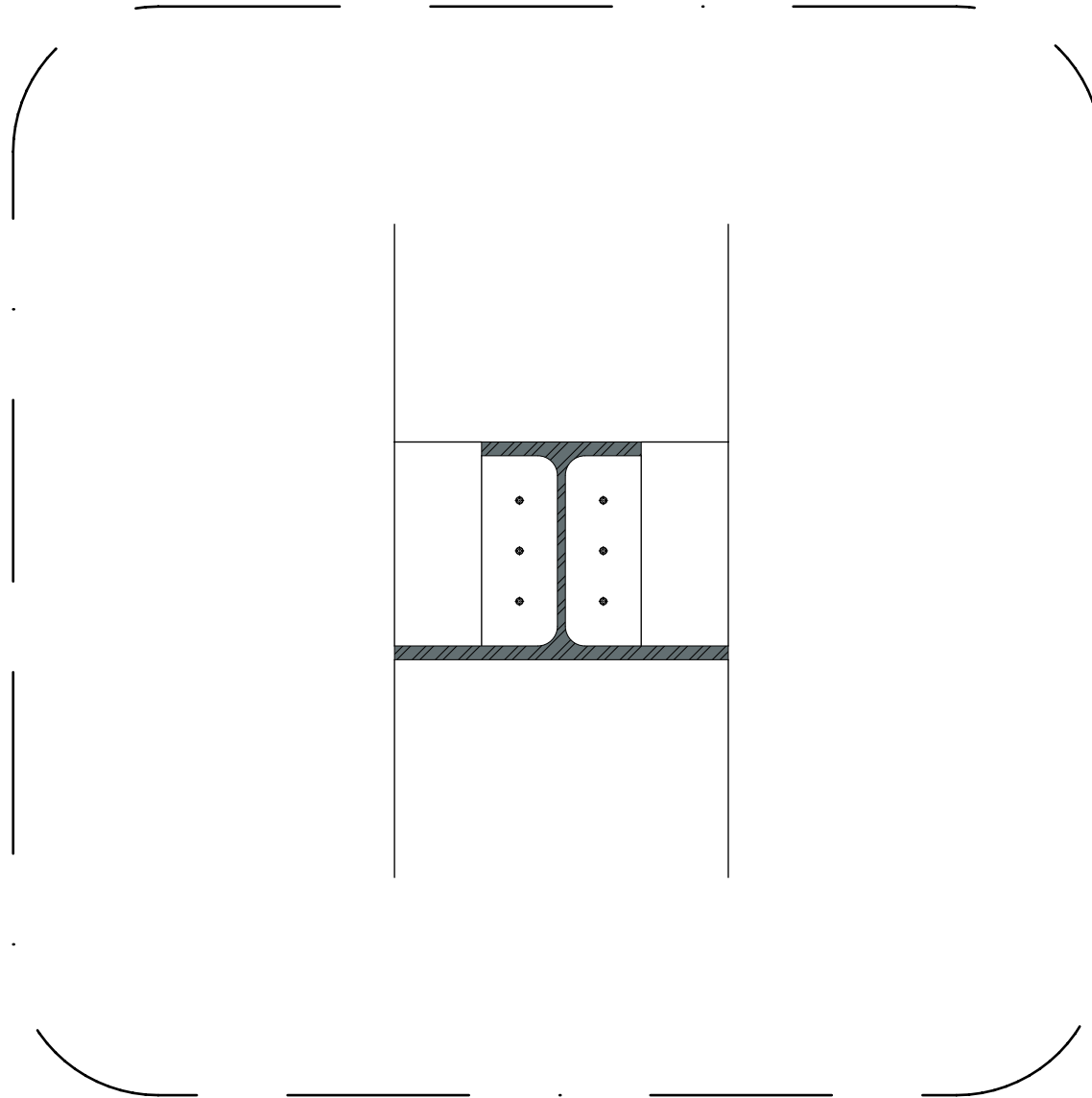
stability



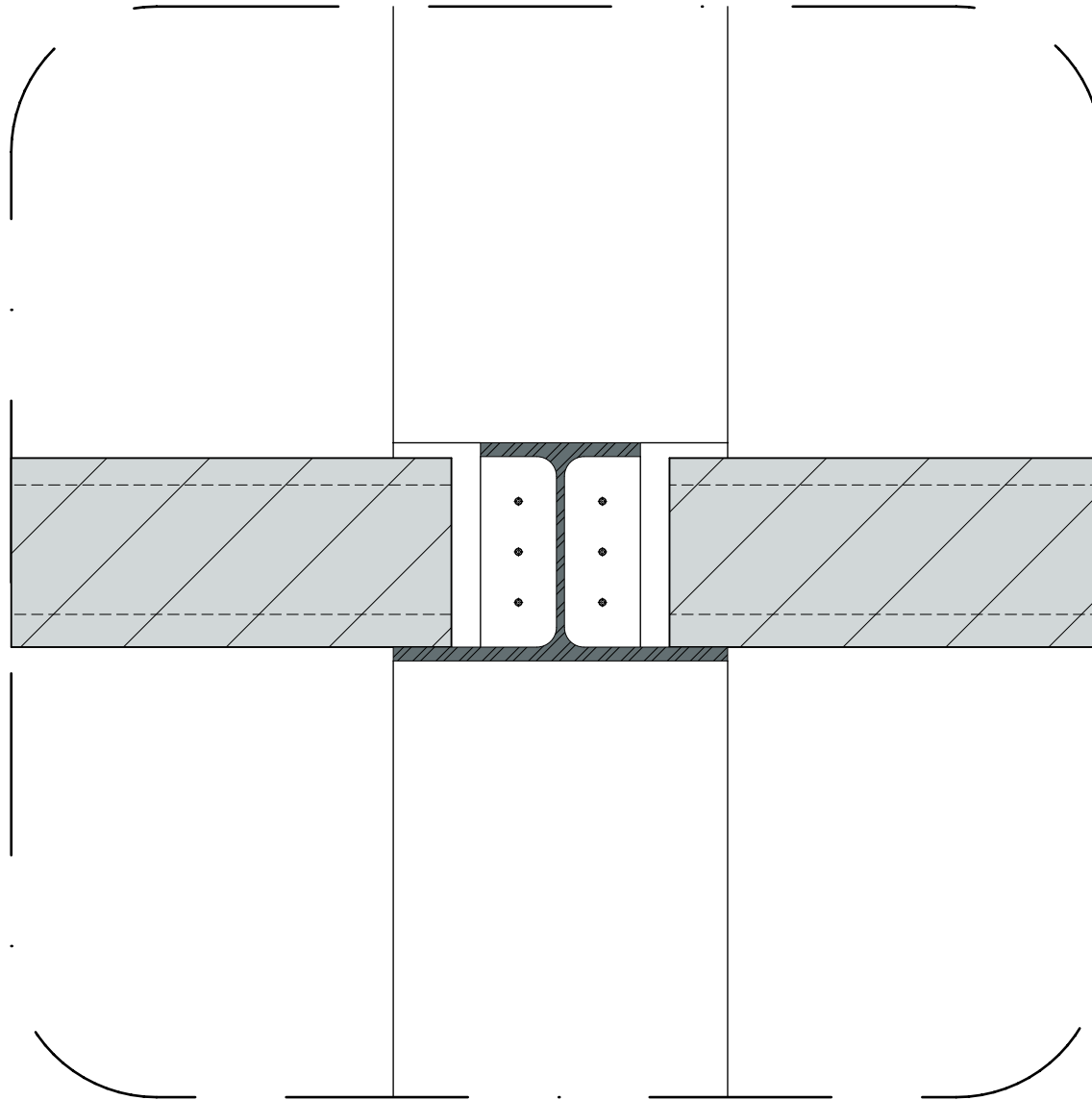
stability



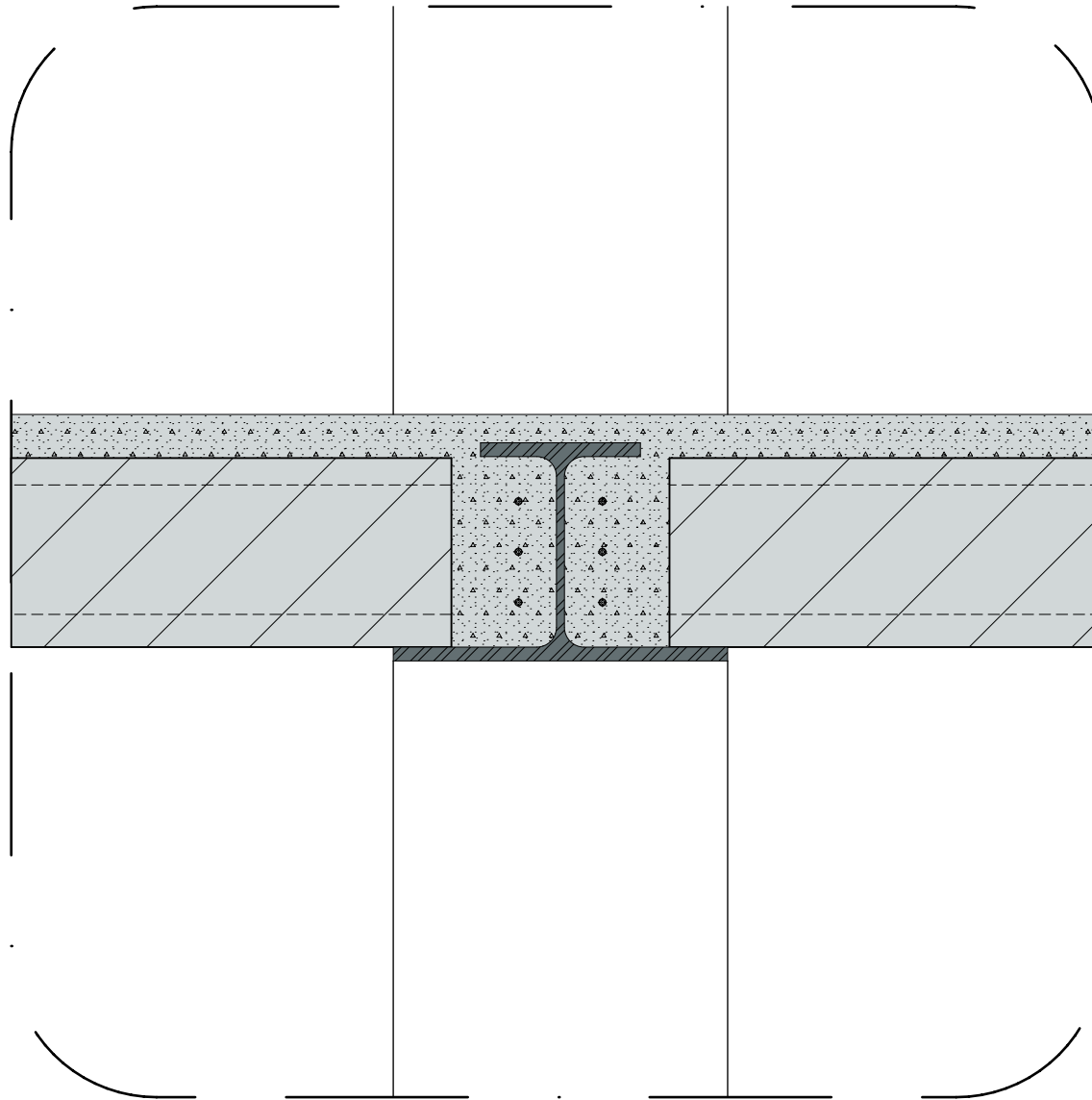
steel framework



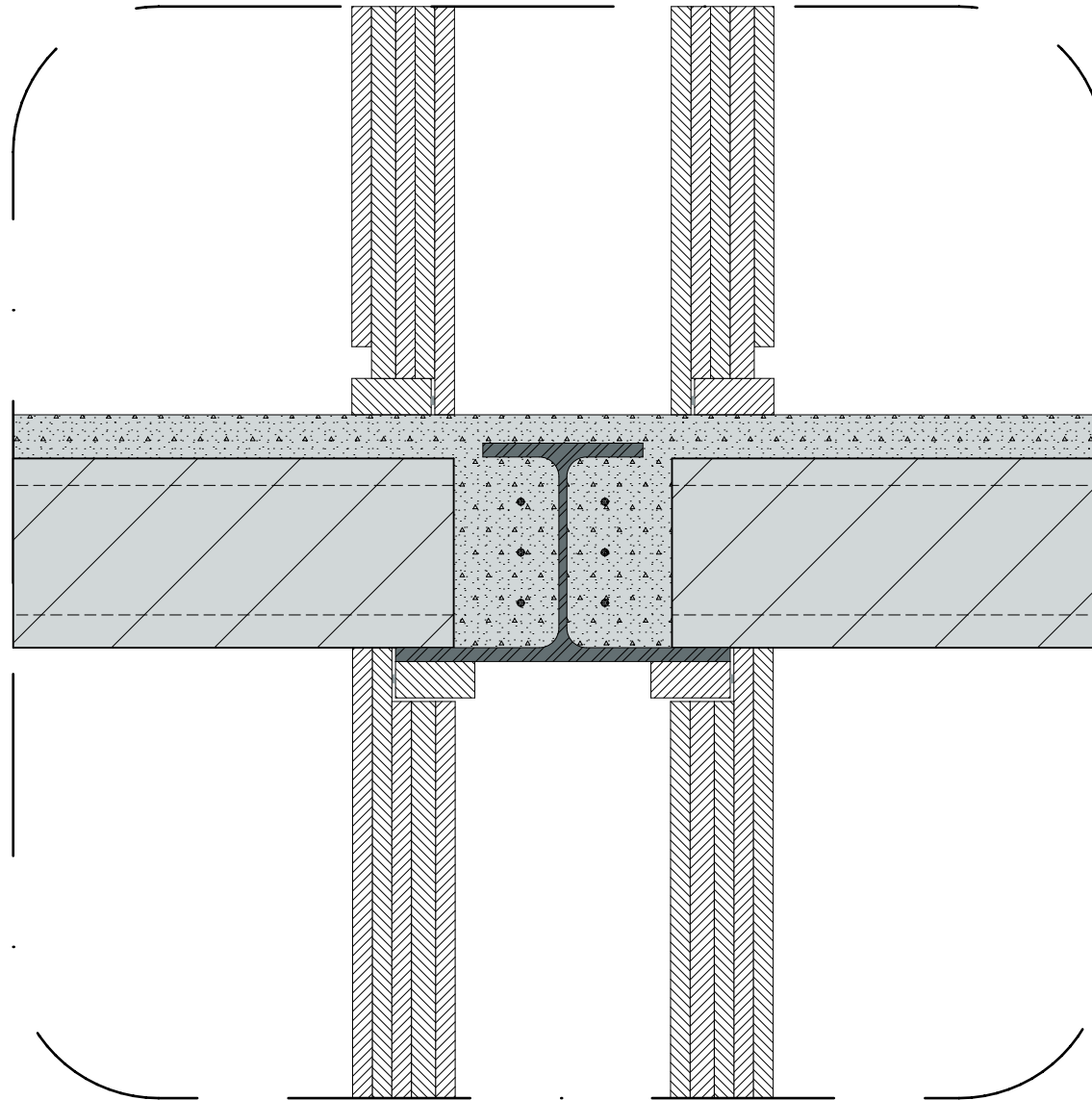
hollow-core slab floors



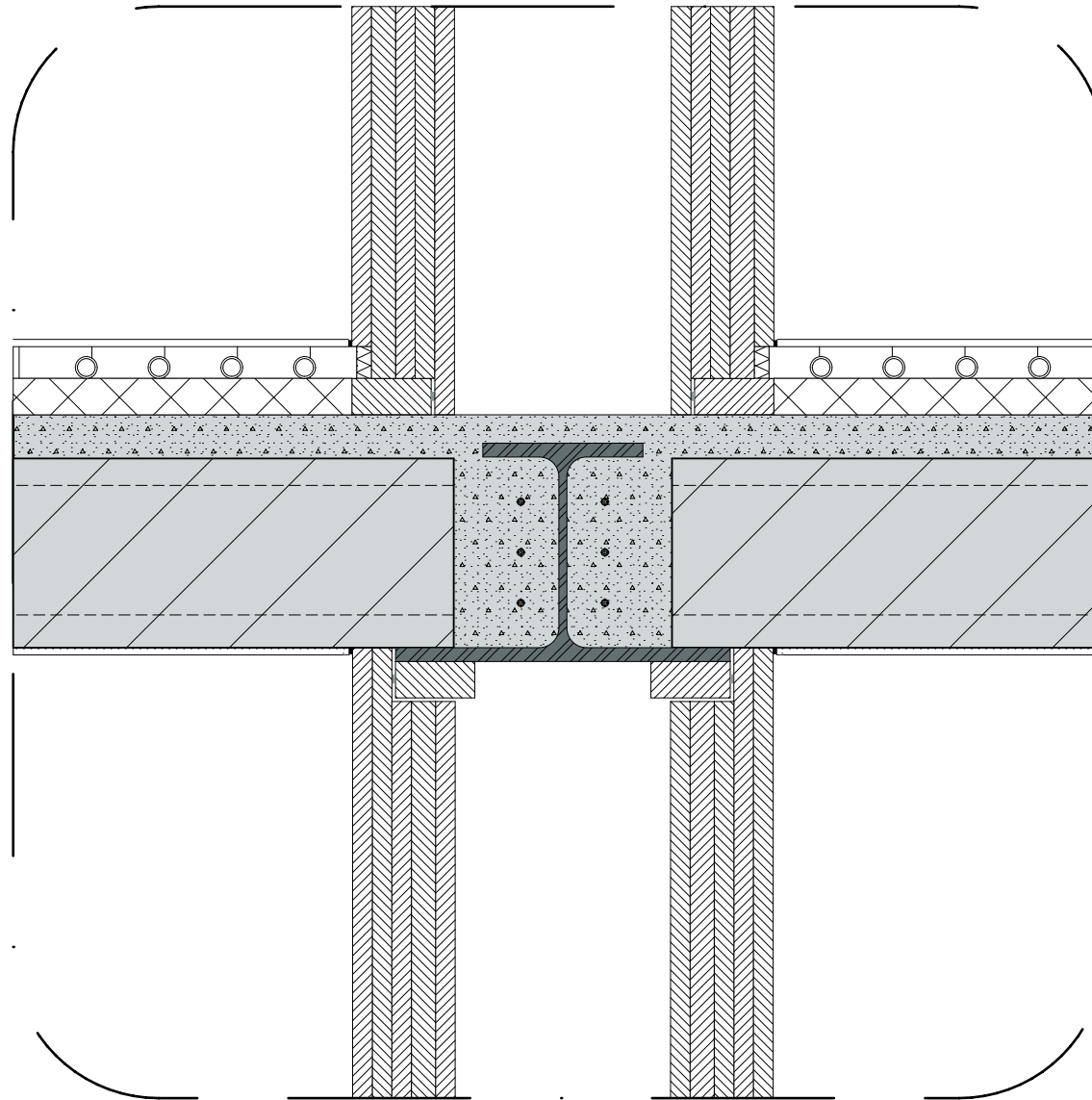
cast concrete topping



partition walls



finishing



sustainability

green roof

breathing windows

ventilation through heat exchanger

radiant heating in floors and ceilings

district cooling in floors and ceilings

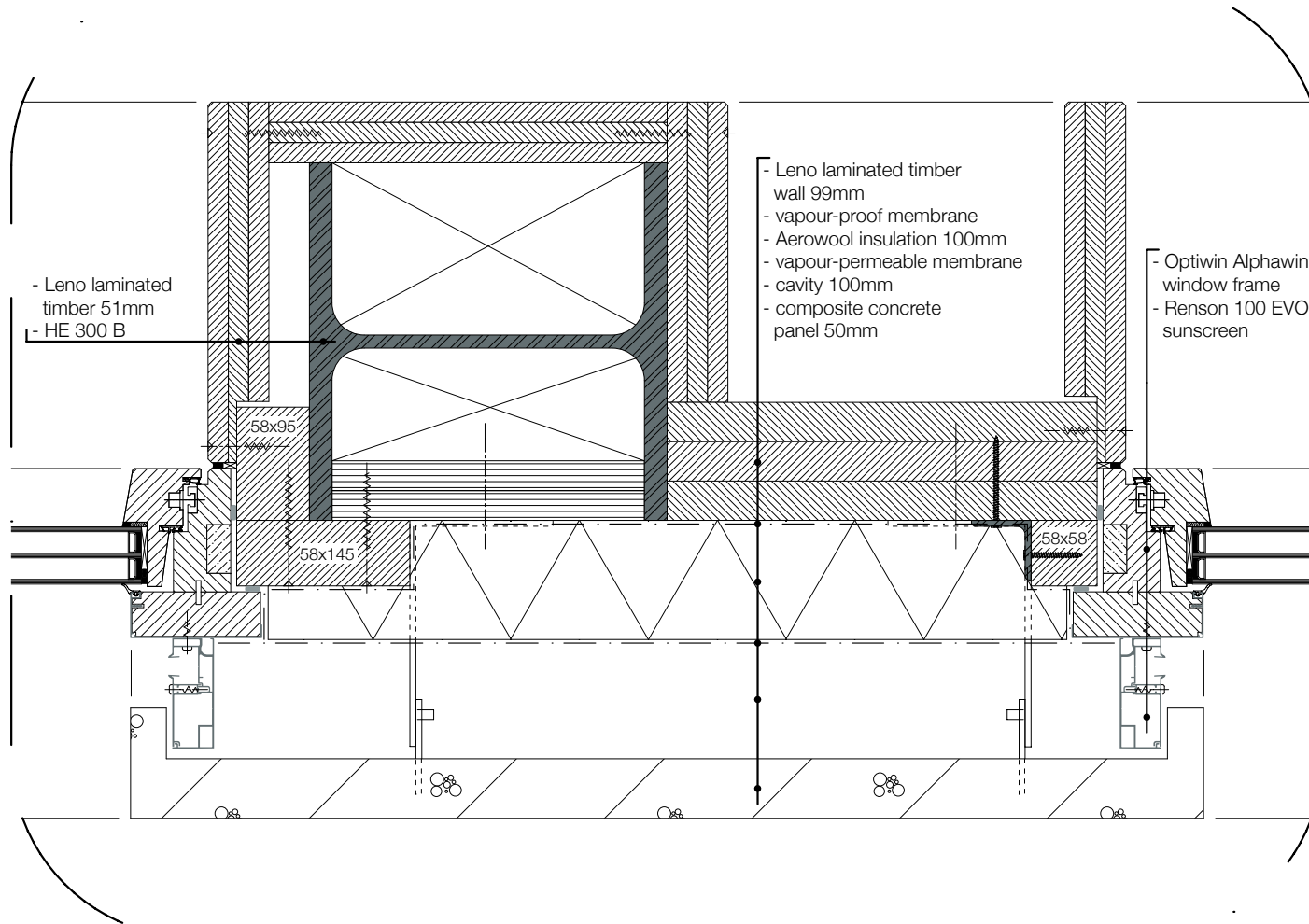
heatpump

energy through pv cells on roof dwelling

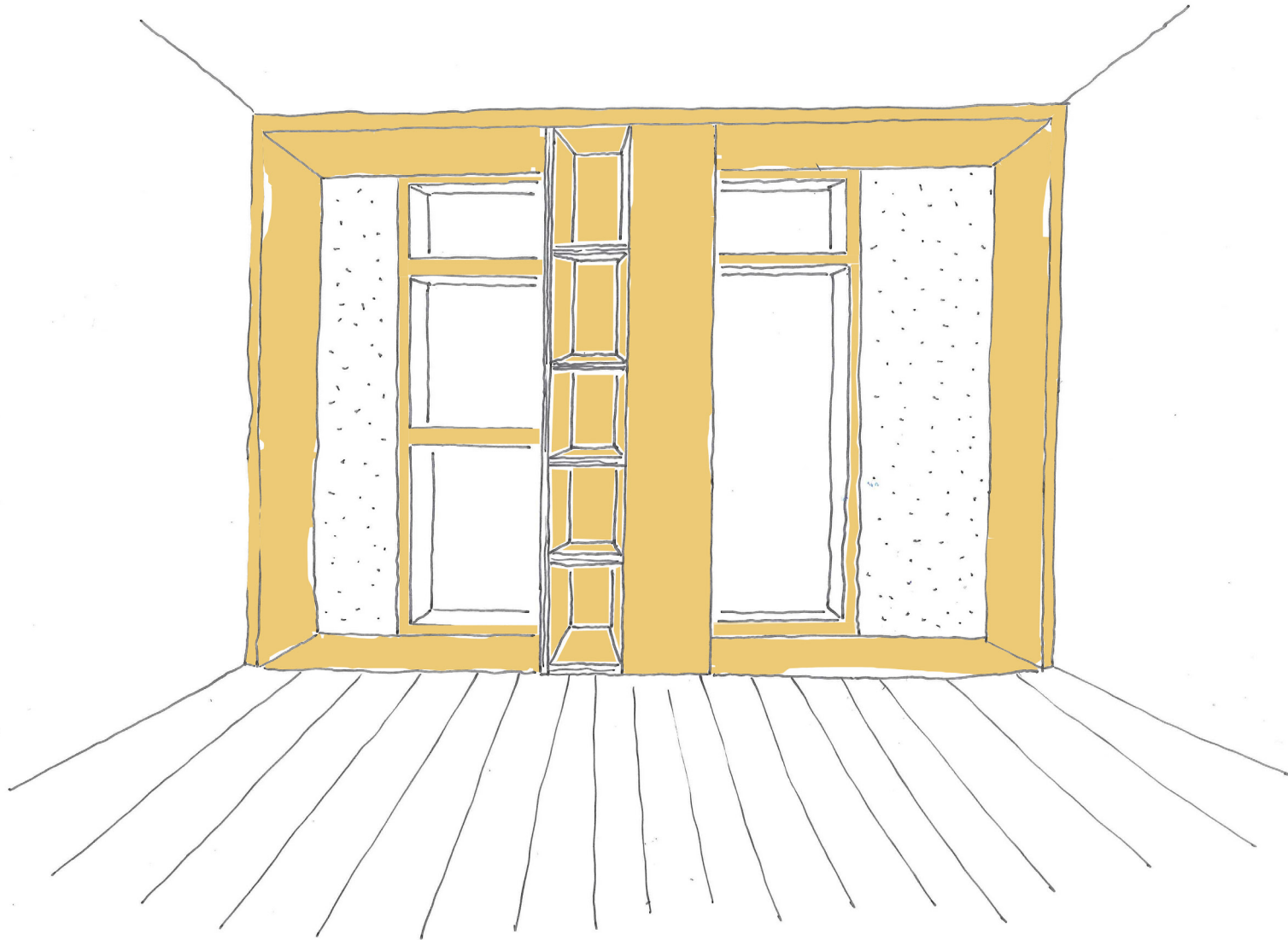
energy through urine processing

detail dwelling

d7



detail dwelling



CONCLUSION

Completed the CBD
defined remaining space for future development

Programmatic value for local people

Attracting people to site
temporary by public program
permanent by dwelling

CONNECTED CBD ZUIDAS TO BOTH GLOBAL AND LOCAL

thank you